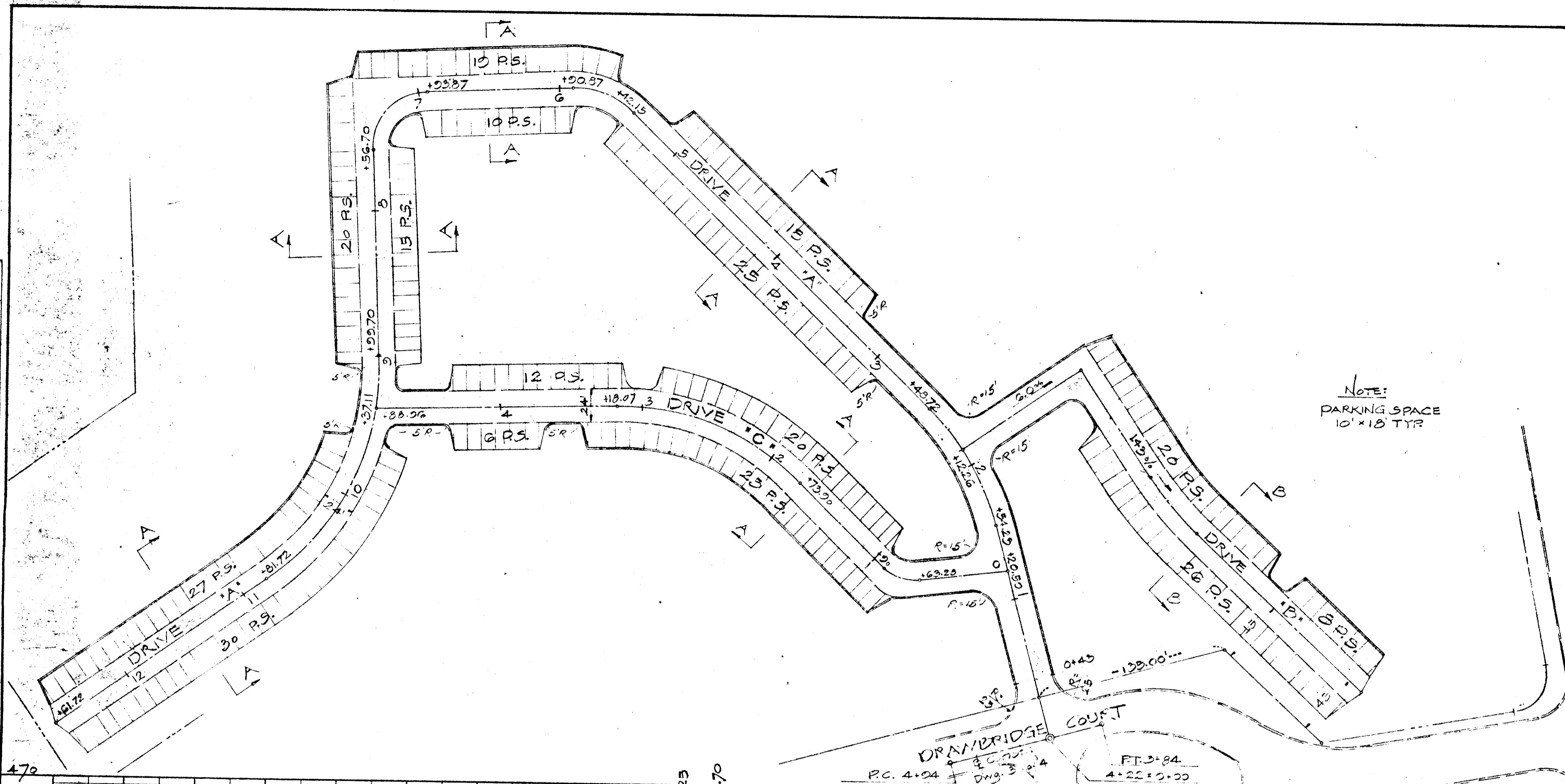


PLAN	DATE
NO.	
BY	
DATE	
NO.	
BY	
DATE	
NO.	
BY	
DATE	
NO.	

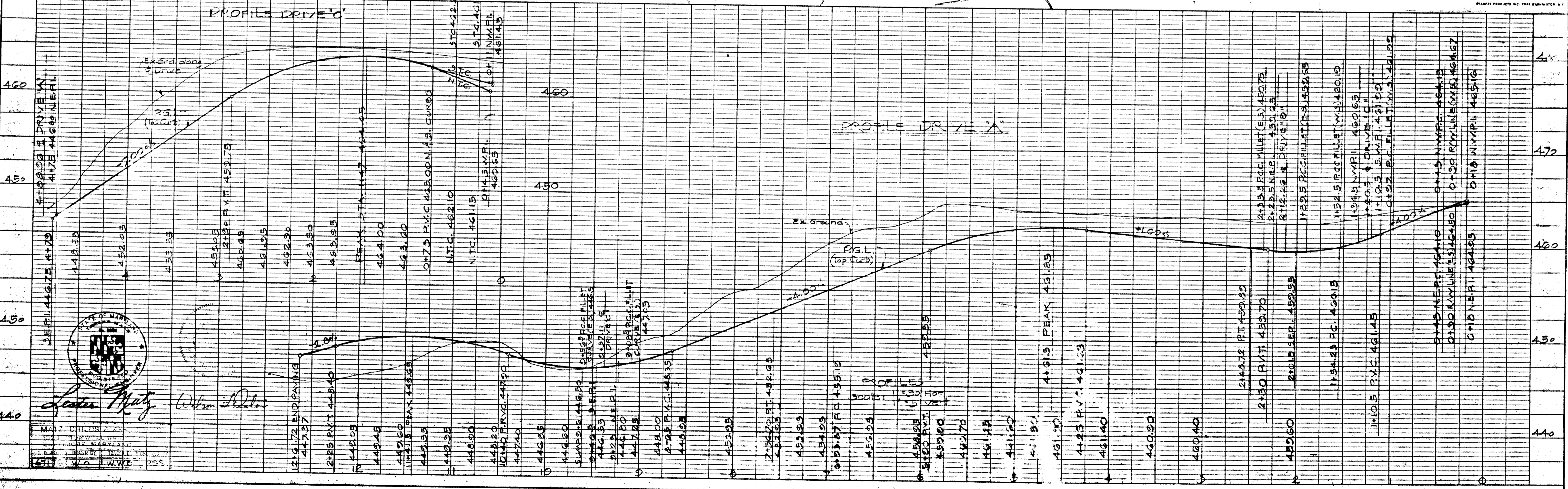


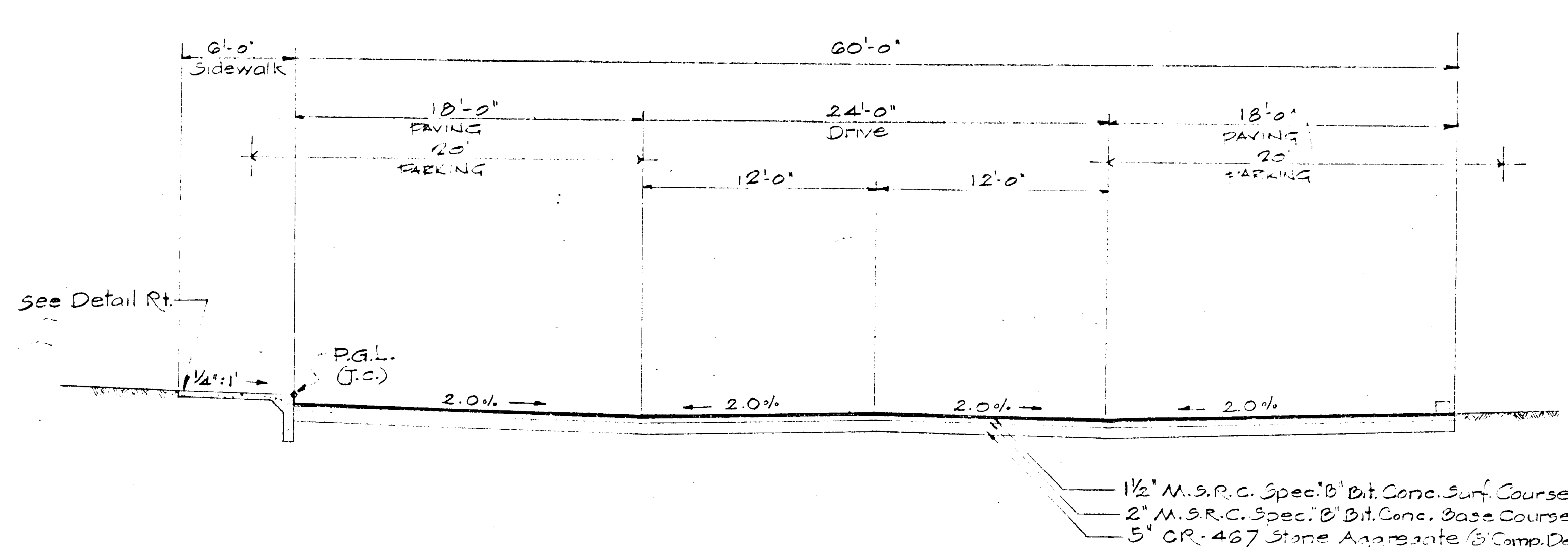
HARPERS FARM RD.

APPROVED SITE PLAN	HOWARD COUNTY PLANNING COMMISSION	DATE
<i>Thomas H. Smith</i>	PLANNING DIRECTOR	12-12-68
APPROVED	HOWARD CO PLANNING COMMISSION	DATE
<i>W. H. Johnson</i>	ENGINEER	12-16-68
APPROVED	HOWARD COUNTY BOARD OF	DATE
<i>Granville W. Hebl</i>	12/19/68	DATE
APPROVED	HOWARD CO METROPOLITAN COMM.	DATE
<i>W. O. Roberts</i>	12-11-67	DATE
APPROVED	HOWARD CO HEALTH DEPARTMENT	DATE
<i>Shepherd</i>	12/11/68	DATE
COUNTY HEALTH OFFICER		

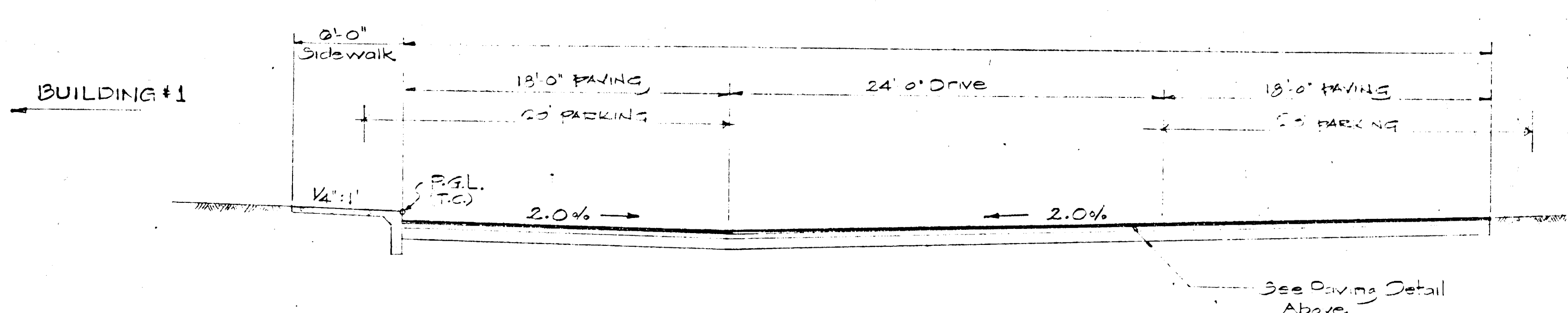
9-6-68	Rev No	Revision Description
COLUMBIA M A R Y L A N D		
OWNER AND DEVELOPER HOWARD RESEARCH AND DEVELOPMENT CORP. THE VILLAGE OF CROSS KEYS - BALTIMORE, MARYLAND 21210		
PROJECT AREA HARPERS FARM EAST APARTMENTS		
PROJECT TITLE DRIVE & PARKING PLAN & PROFILES		
Des By	Scale 1"=50'	Dwg. No.
Dwn By	Date July, 1968	C.C.F. No.
Chk By	Approved	C-1

PROFILE	DATE
NO.	
BY	
DATE	
NO.	
BY	
DATE	
NO.	

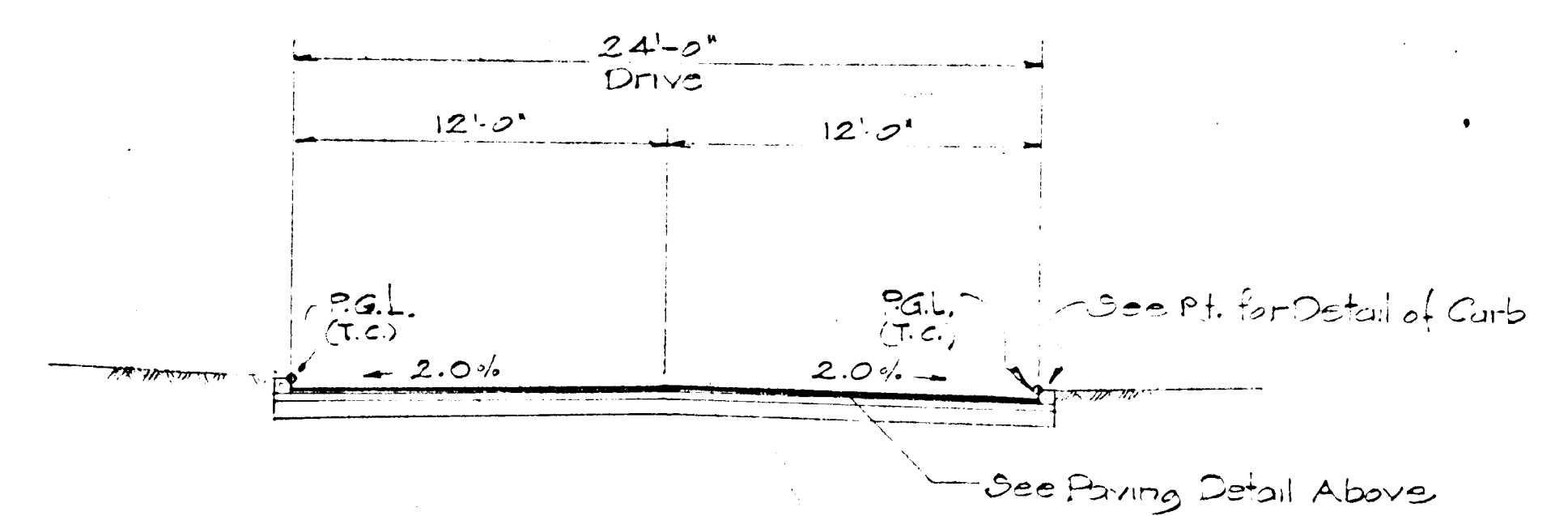




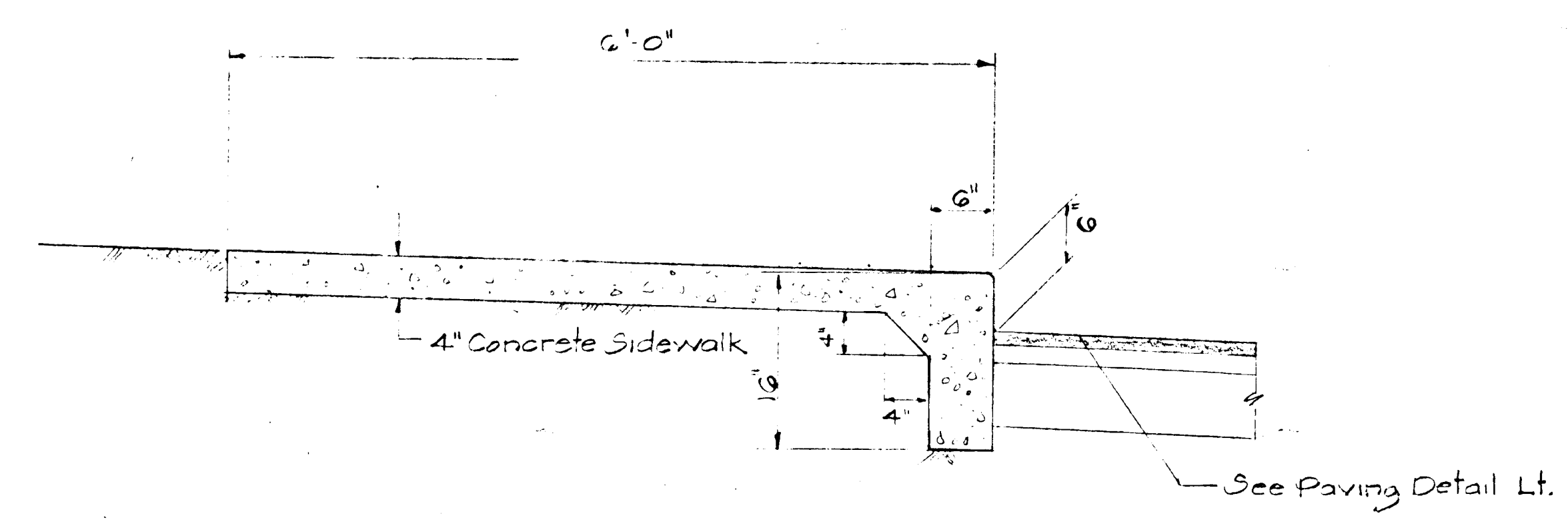
SECTION A-A
SEE PLAN FOR LOCATIONS
Scale: 1" = 5'-0"



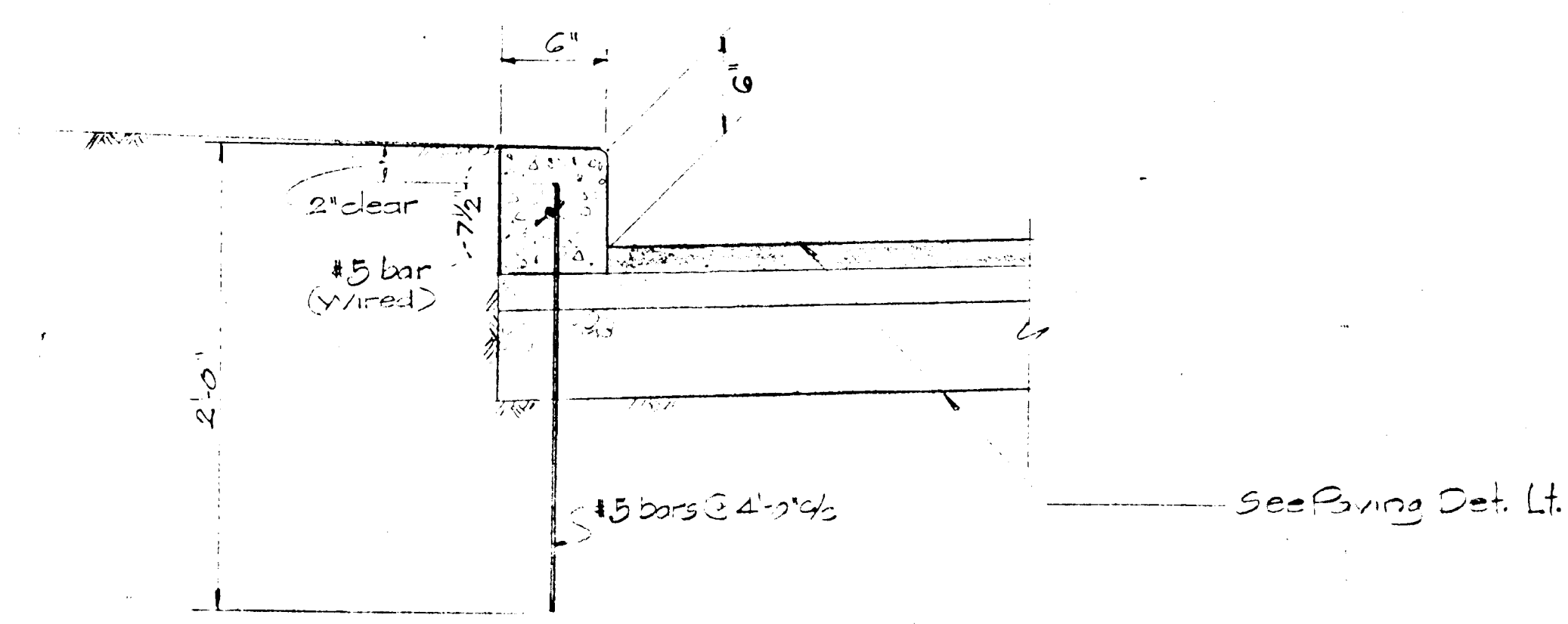
SECTION B-B
AT BLDG. #1 ONLY - SEE PLAN
Scale: 1" = 5'-0"



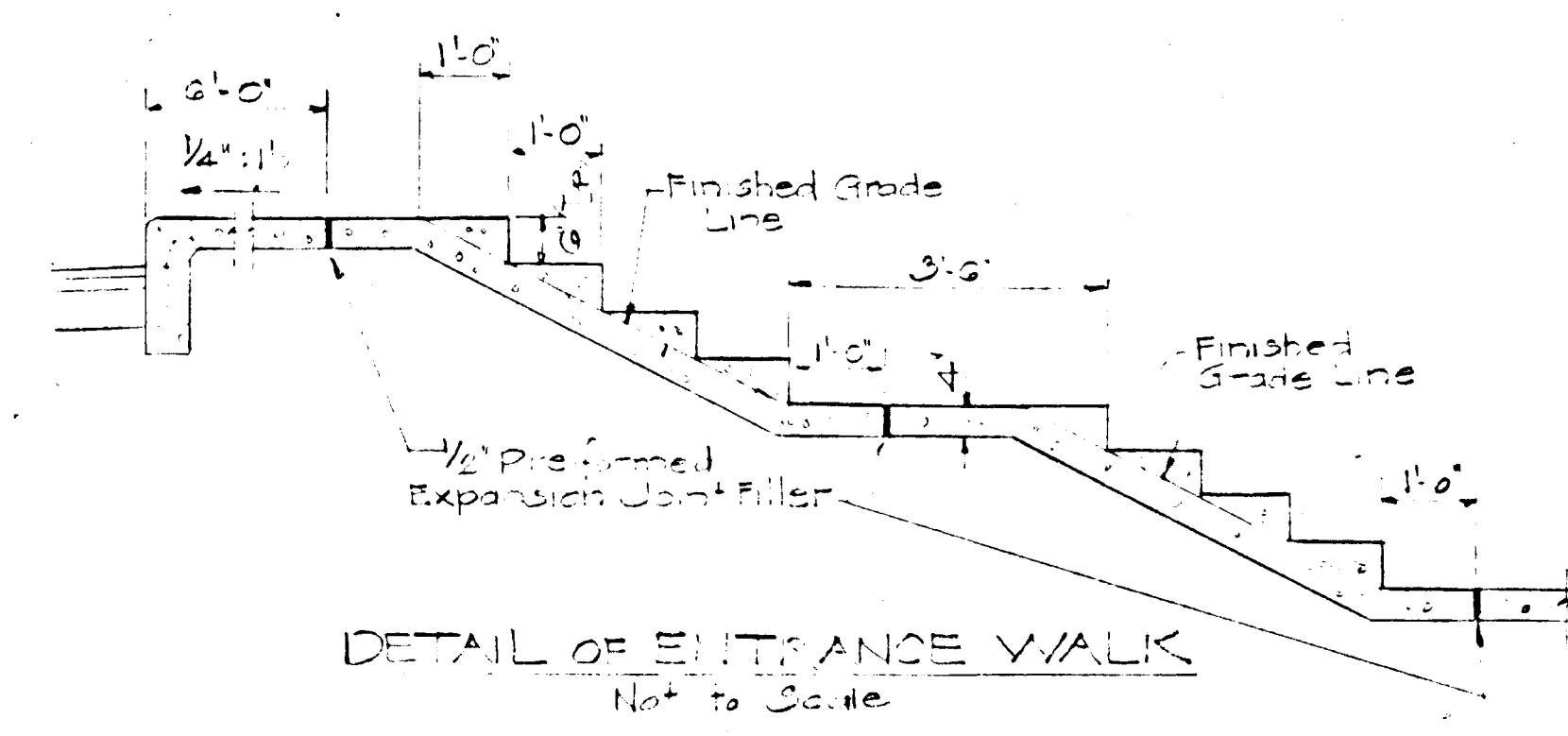
SECTION C-C
AT MAIN ENTRANCE
SEE PLAN
Scale: 1" = 5'-0"



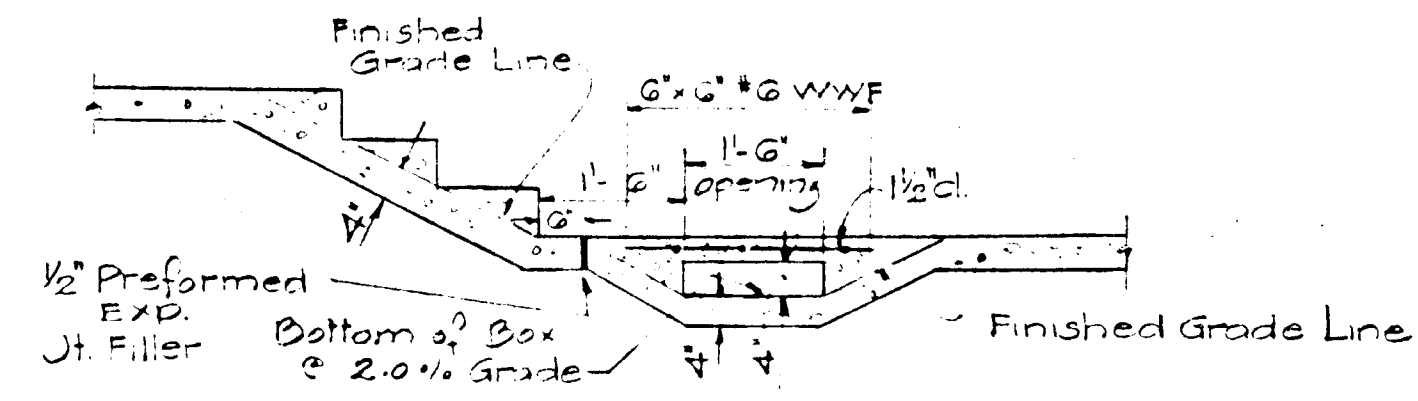
6'-0" SIDEWALK ADJOINING PARKING OR DRIVE
Not to Scale



TYPICAL CURB SECTION
Scale: 1/2" = 1'-0"



DETAIL OF ENTRANCE WALK
Not to Scale



DETAIL OF DRAINAGE SWALE
CROSSING WALK
Not to Scale

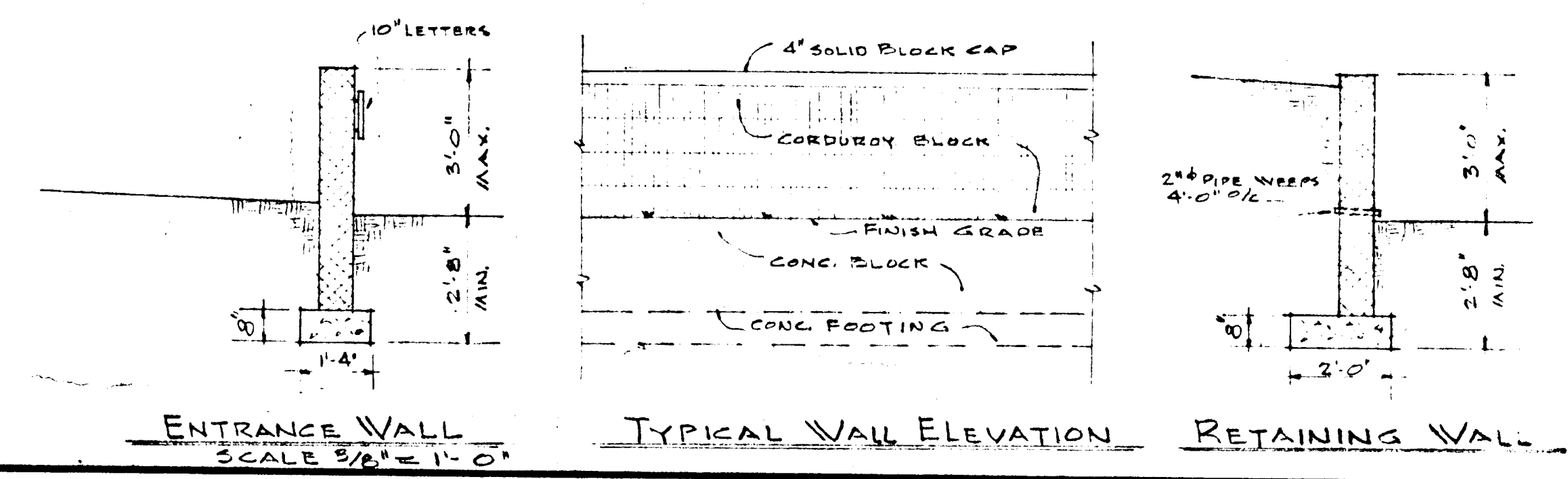
NOTE: All concrete to be Class 'A' (minimum) (using 'Daxx')

APPROVED SITE PLAN HOWARD COUNTY PLANNING COMMISSION <i>Thomas G. Harris</i> 12-12-68 PLANNING DIRECTOR DATE
APPROVED HOWARD CO. PLANNING COMMISSION <i>J. Lawson</i> 12-16-68 ENGINEER DATE
APPROVED HOWARD COUNTY ROADS DEPT. <i>Granville H. Nelmond</i> 12/9/68 ROADS ENGINEER DATE
APPROVED HOWARD CO. METROPOLITAN COMM. <i>W. O. Albert</i> 12-11-68 CHIEF ENGINEER DATE
APPROVED HOWARD CO. HEALTH DEPARTMENT FOR PUBLIC WATER & SEWER <i>Heath</i> 12/11/68 COUNTY HEALTH OFFICER DATE

Lester Matz

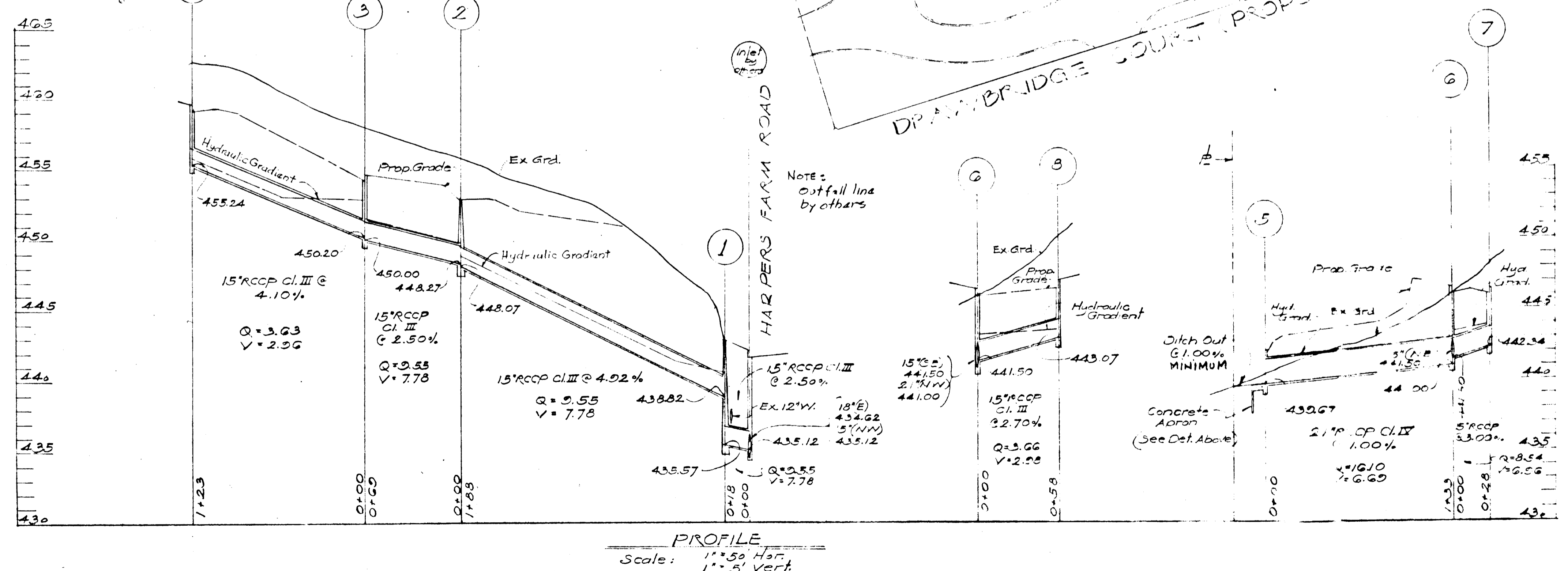
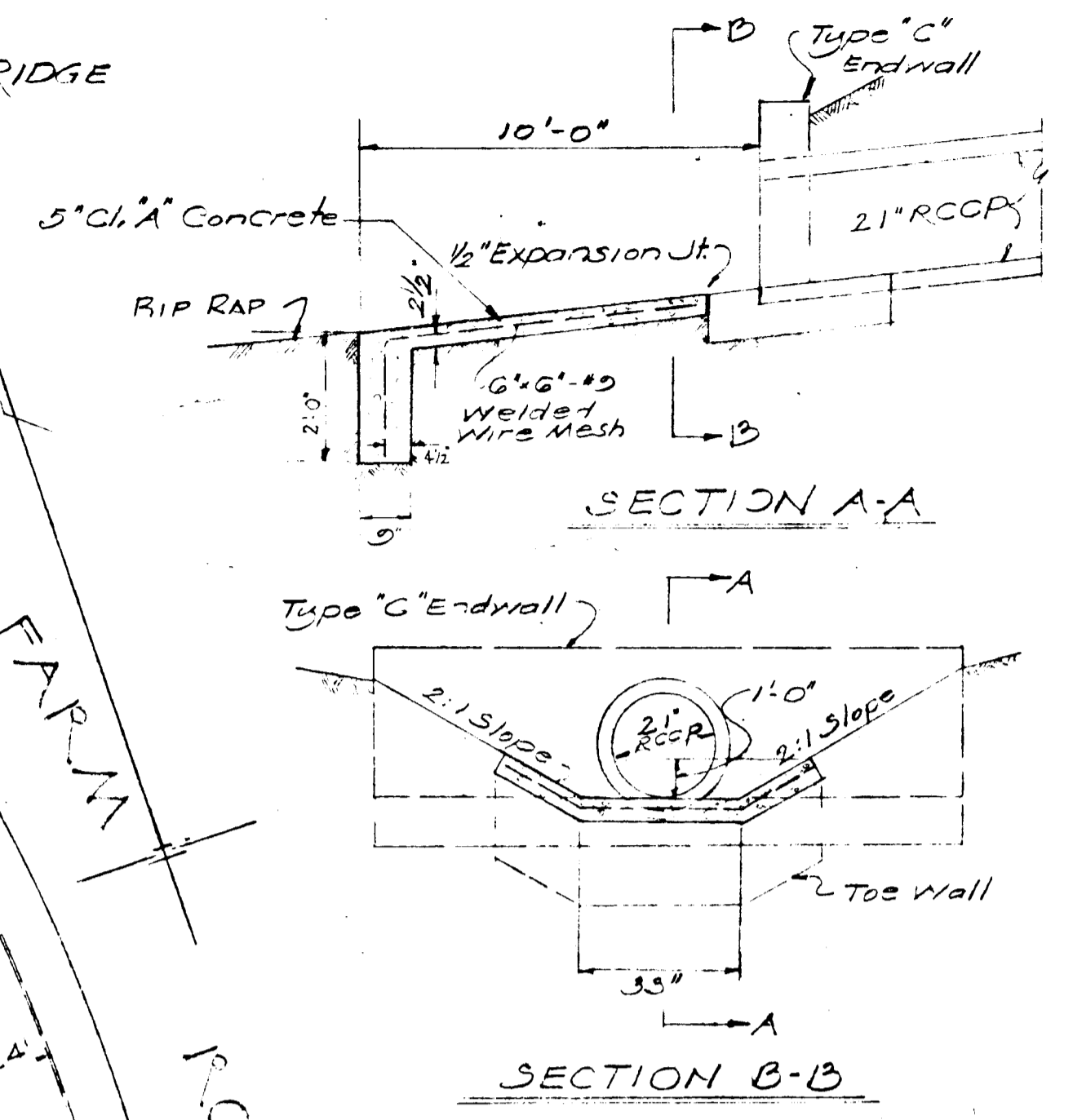
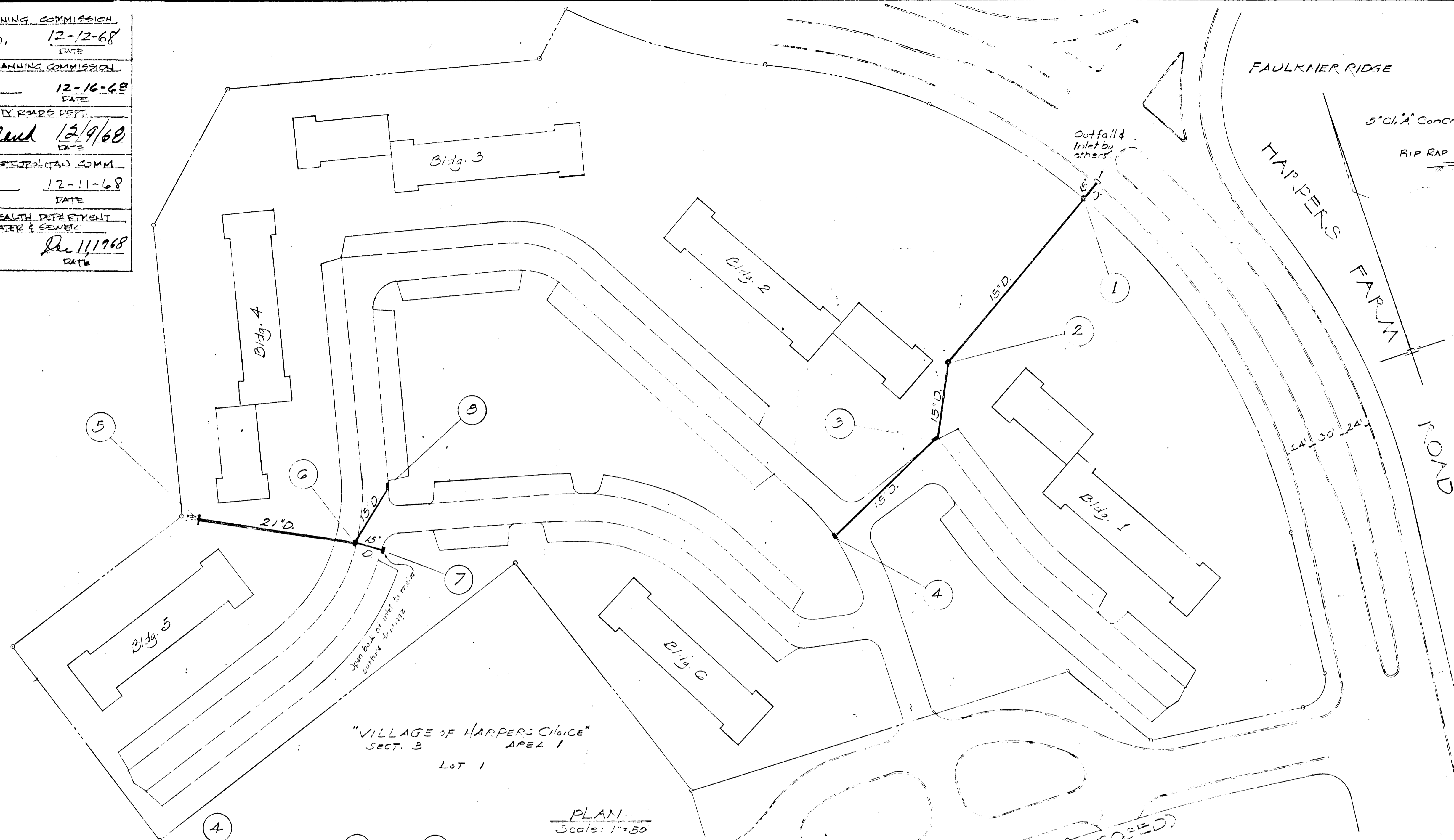
MATZ, CHILDS & ASSOCIATES
1020 DORWELL BRIDGE ROAD
BALTIMORE, MARYLAND 21204
I.C. NO. 67176 P.S. W.W.B. P.S.S.

William H. Carter



9-6-68	1	ADDED DETAILS OF BLOCK WALLS
Rev Date	Rev No	Revision Description
COLUMBIA MARYLAND		
OWNER AND DEVELOPER HOWARD RESEARCH AND DEVELOPMENT CORP. THE VILLAGE OF CROSS KEYS - BALTIMORE, MARYLAND 21210		
PROJECT AREA	HARPERS FARM EAST APARTMENTS	
PROJECT TITLE	TYPICAL CROSS SECTIONS & DETAILS	
Des By P.S.S.	Scale AS NOTED	Dwg No
Drn By W.O.	Date July, 1968	C.C.F. No
Chk By P.S.S.	Approved	C-2

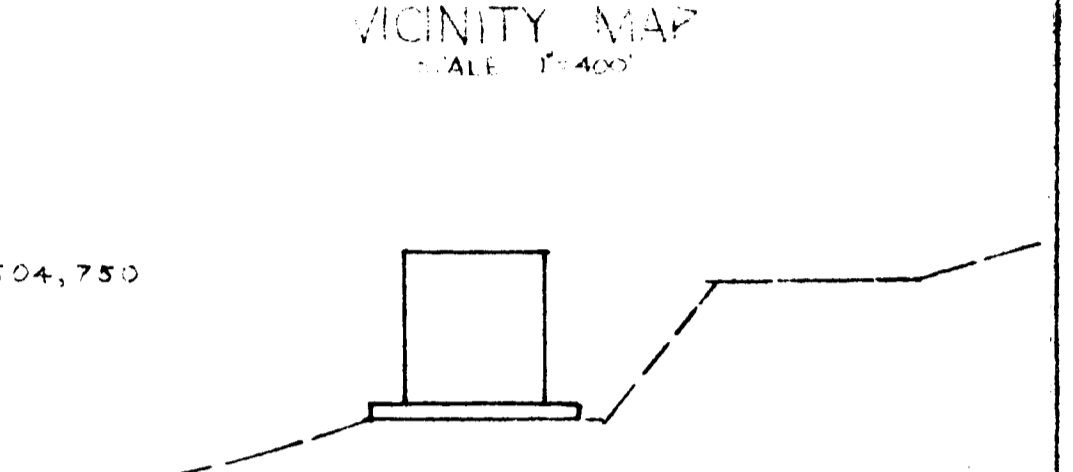
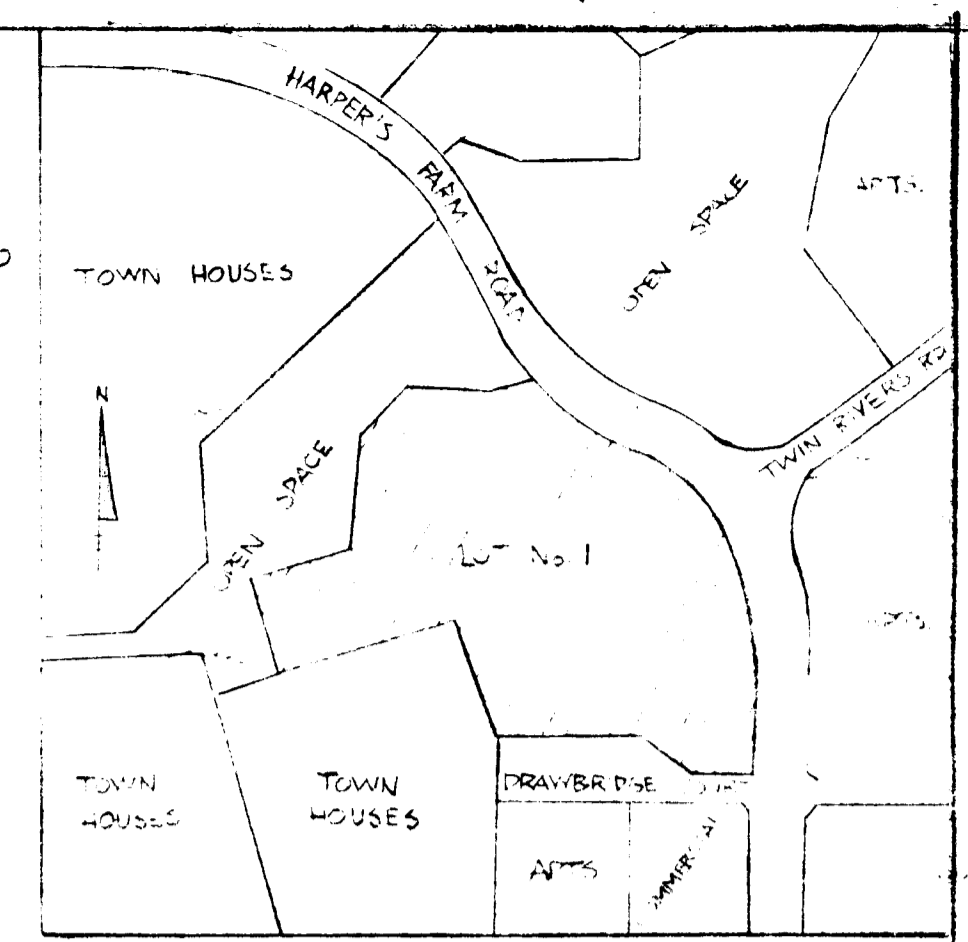
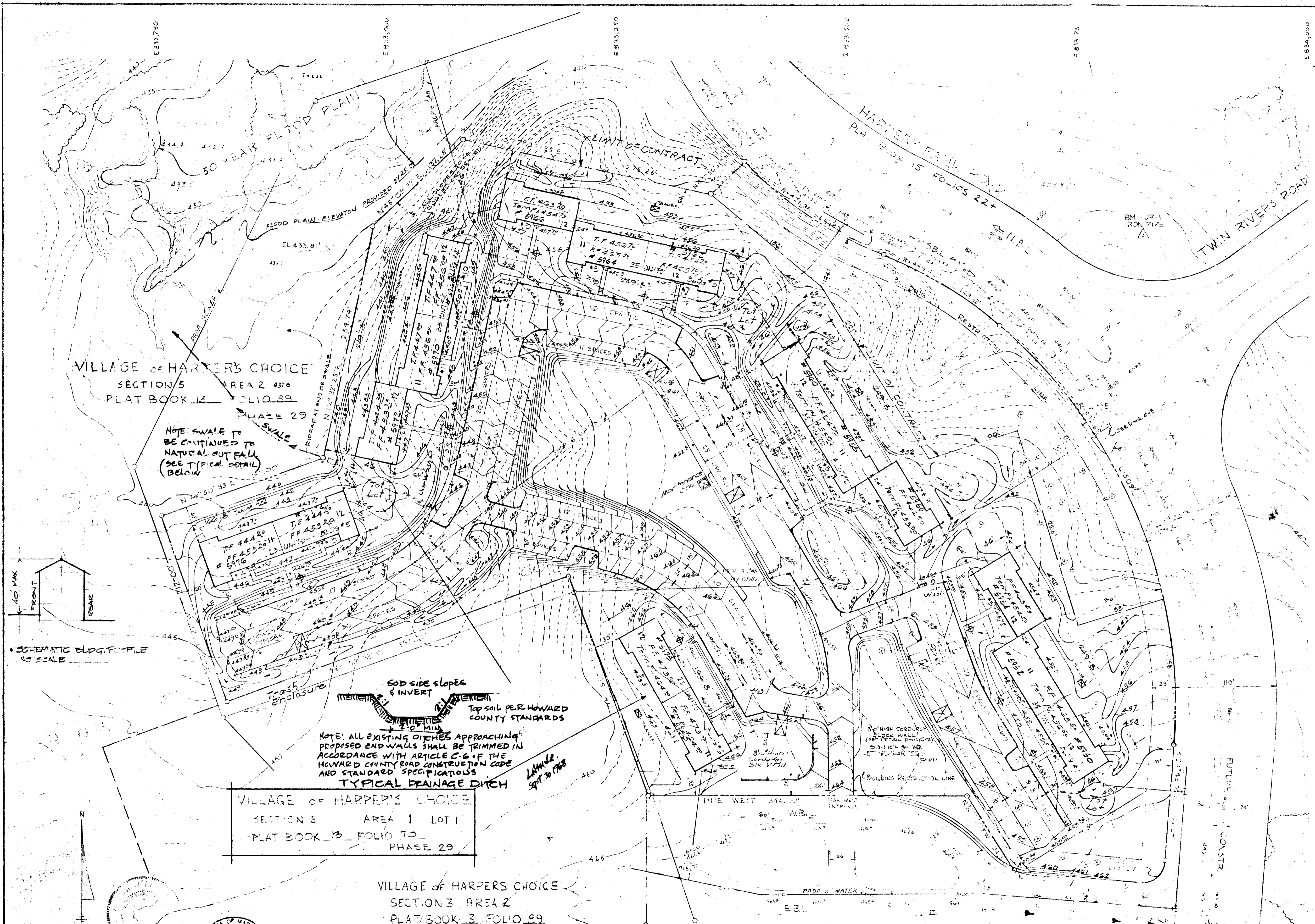
APPROVED SITE PLAN
 HOWARD COUNTY PLANNING COMMISSION
 12-12-68
 PLANNING DIRECTOR
 APPROVED HOWARD CO. PLANNING COMMISSION
 12-16-68
 CHIEF ENGINEER
 APPROVED HOWARD COUNTY ROADS DEPT.
 12/9/68
 CHIEF ENGINEER
 APPROVED HOWARD CO. METROPOLITAN COMM.
 12-11-68
 CHIEF ENGINEER
 APPROVED HOWARD CO. HEALTH DEPARTMENT
 FOR PUBLIC WATER & SEWER
 12/11/68
 CHIEF HEALTH OFFICER



STRUCTURE SCHEDULE			
No.	Type	Top Elev.	REMARKS
1	Drop Manhole	442.92	Std. Dwg. D-104
2	Manhole	452.9	Std. Dwg. D-103
3	Class 'H' Inlet	454.64	Std. Dwg. D-76
4	Class 'H' Inlet	453.55	Std. Dwg. D-76
5	Type 'C' Endwall		Std. Dwg. D-52
6	Class 'H' Inlet	446.50	Std. Dwg. D-76
7	Class 'H' Inlet	446.50	Std. Dwg. D-76
8	Class 'E' Comb. Inl.	447.10	Std. Dwg. D-60

3-G-68	1	OUTFALL BY OTHERS NOTED
Rev Date	Rev No	Revision Description
COLUMBIA MARYLAND		
OWNER AND DEVELOPER HOWARD RESEARCH AND DEVELOPMENT CORP. THE VILLAGE OF CROSS KEYS, BALTIMORE, MARYLAND 21210		
PROJECT AREA HARPERS FARM EAST APARTMENTS		
PROJECT TITLE STORM DRAIN PLAN & PROFILES		
Des By WJO	Scale AS NOTED	Dwg No
Drn By WJO/WB	Date July 1968	C.C.F. No
Chk By WJO	Approved	C-3

Wilson Carter
 Lester Matz
 MATZ, CHILDS & ASSOCIATES
 1020 CROWNELL BRIDGE ROAD
 BALTIMORE, MARYLAND 21204
 DRAWN BY WJO CHECKED BY WJO
 12/17/68 WJO WJO WJO



TYPICAL TRANSFORMER INSTALLATION
No Scale

LEGEND

- ⊕ Mushroom Light
- ⊠ Trash Enclosure (12'x20')
- ⊞ Transformer (See Det. above)
- Car Wash location only
Installation will be cold water spigot.
- ⊞ Proposed Maintenance Shop location only

GENERAL NOTES

SITE ANALYSIS

1. AREA OF SITE 12.047 AC.
 2. PRESENT ZONING APT.
 3. ALL SLOPES AND DISTURBED EARTH TO BE SLOPED OR SEEDED.
 4. ALL STREETS OF INTERIOR TO BE PRIVATE.
- UNIT COUNT
- | | |
|---------------------|----------------|
| ALLOWABLE PROVIDED | 196 |
| NO OF 2 B.R. APTS. | 32 |
| NO OF 1 B.R. APTS. | 34 |
| AREA OF 2 B.R. APT. | 7659 Sq. Ft. |
| AREA OF 1 B.R. APT. | 6309 Sq. Ft. |
| TOTAL BLDG. AREA | 51,744 Sq. Ft. |
| % OF BLDG. COVERAGE | 3.86% |

NO. OF APARTMENT UNITS = 186
 NO. OF PARKING SPACES REQ'D = 279
 NO. OF PARKING SPACES PROVIDED = 281 (10/20)
 (NOTE: 10/20 PARKING SPACE INCLUDES 2 OVERHEAD)

NOTE: SWALE TO BE CONTINUED TO NATURAL OUT FALL (SEE TYPICAL DETAIL BELOW)

NOTE: ALL EXISTING DITCHES APPROACHING PROPOSED END WALLS SHALL BE TRIMMED IN ACCORDANCE WITH ARTICLE C-6 OF THE HOWARD COUNTY ROAD CONSTRUCTION CODE AND STANDARD SPECIFICATIONS

TYPICAL DRAINAGE DITCH

NOTE: TOP SOIL PER HOWARD COUNTY STANDARDS

VILLAGE OF HARPER'S CHOICE
 SECTION 3 AREA 1 LOT 1
 PLAT BOOK 13 FOLIO 10
 PHASE 29

VILLAGE OF HARPER'S CHOICE
 SECTION 3 AREA 2
 PLAT BOOK 13 FOLIO 89

DEWBIDGE COURT (PROPOSED)

MATZ, CHILDS & ASSOCIATES
 1030 BROMWELL BRIDGE ROAD
 BALTIMORE, MARYLAND 21204



APPROVED SPECIAL
 HOWARD COUNTY PLANNING COMMISSION
 Thomas J. Hamilton 12-12-68
 PLANNING DIRECTOR

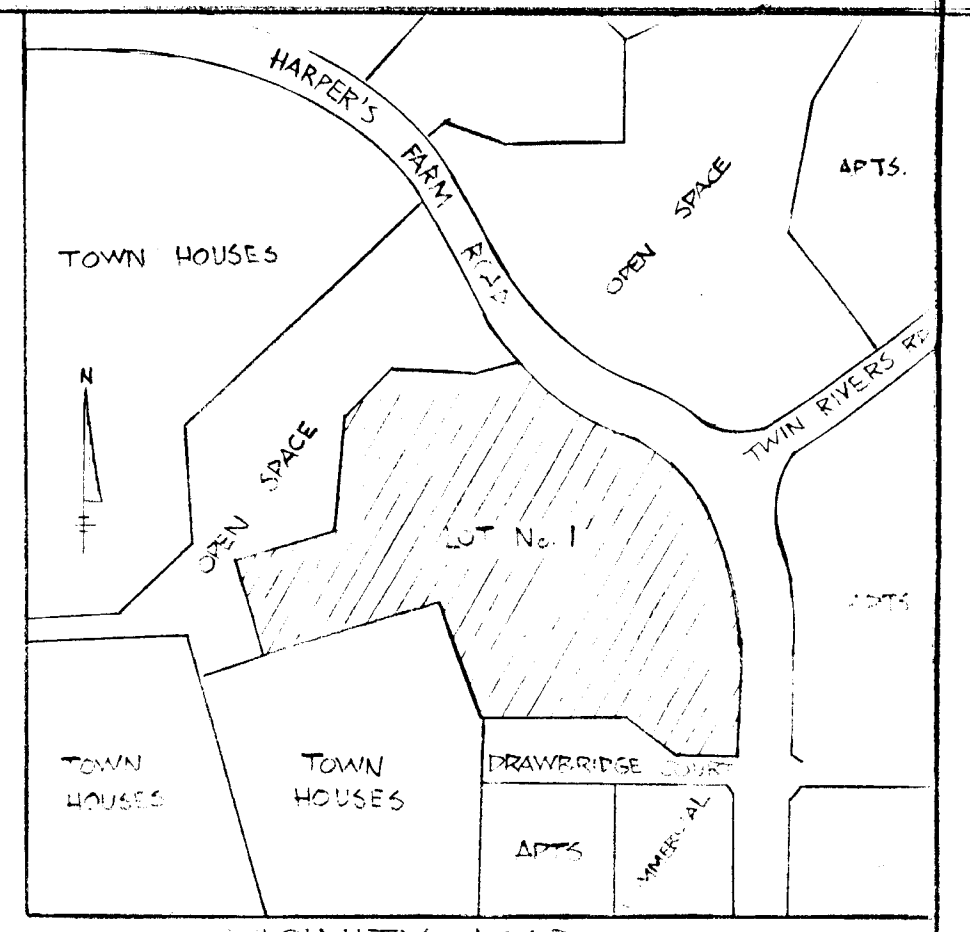
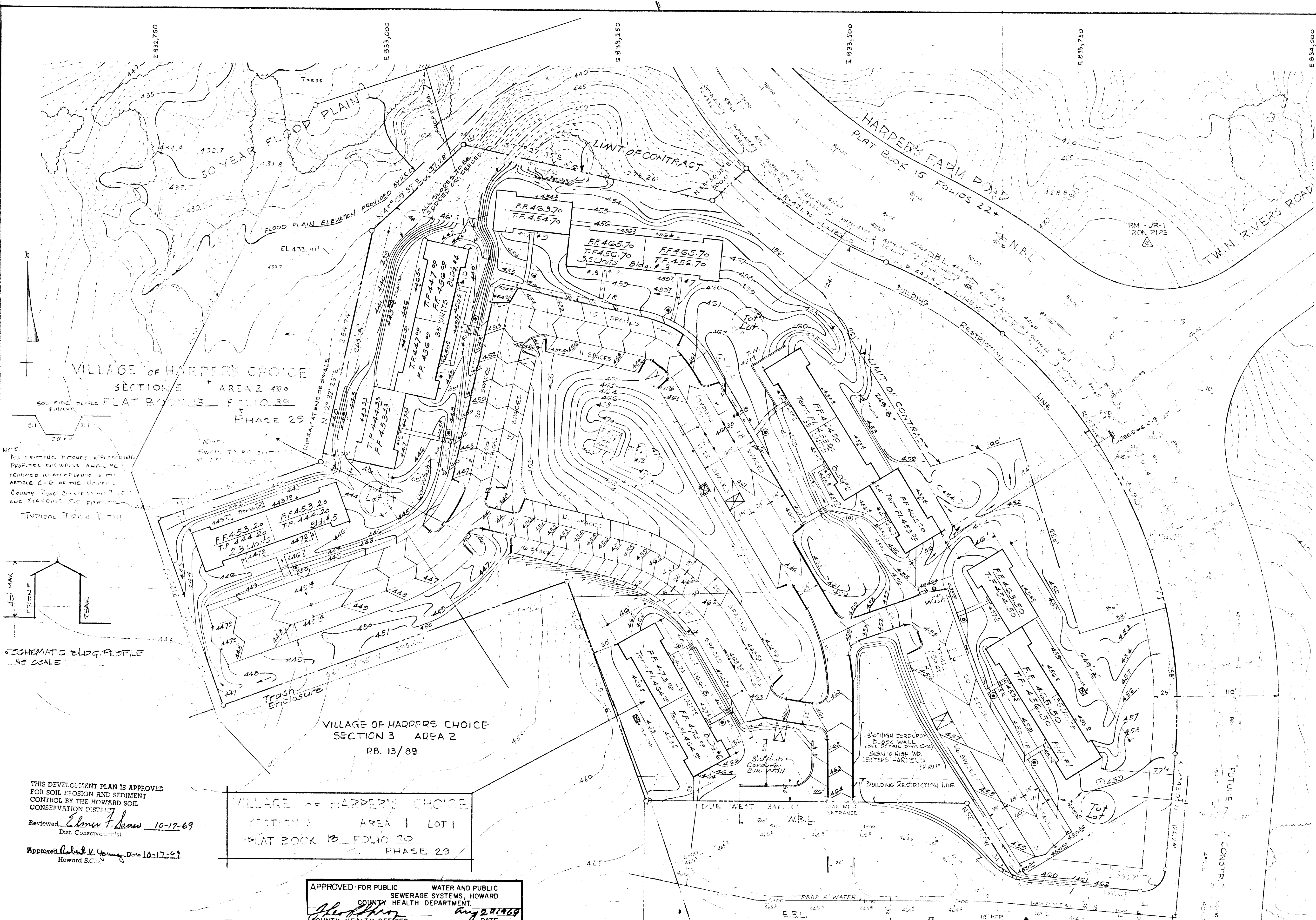
APPROVED HOWARD CO. PLANNING COMMISSION
 H. Clavson 12-16-68
 CHIEF

APPROVED HOWARD COUNTY BOARD OF
 ROAD ENGINEER
 W. H. Weiland 12/9/68
 CHIEF

APPROVED HOWARD CO. METROPOLITAN COMM.
 W. O. F. 11-11-68
 CHIEF ENGINEER

APPROVED
 Dec 11, 1968

3-6-68	1	SETBACKS, SLOPED AREAS AND NOTES
Rev Date	Rev No	Revision Description
COLUMBIA MARYLAND		
OWNER AND DEVELOPER HOWARD RESEARCH AND DEVELOPMENT CORP. THE VILLAGE OF CROSS KEYS - BALTIMORE, MARYLAND 21210		
PROJECT AREA SECTION 3 AREA 2 HARPER'S FARM-EAST APARTMENTS		
PROJECT TITLE GRADING PLAN		
Des By	W. O. F.	Scale 1" = 50'
Drn By	W. O. F.	Date APRIL 1, 1968
Chk By	RSS	Approved
		Dwg. No. C.C.F. No. A-1



- LEGEND**
- Mushroom Light
 - ☒ Trash Enclosure (12'x20')
 - ☒ Transformer (See Det. above)
 - Car Wash location only
Installation with cold water spigot.
 - ☒ Proposed Maintenance Shop location only
 - R.R. Tie Curb
 - Concrete Curb

GENERAL NOTES

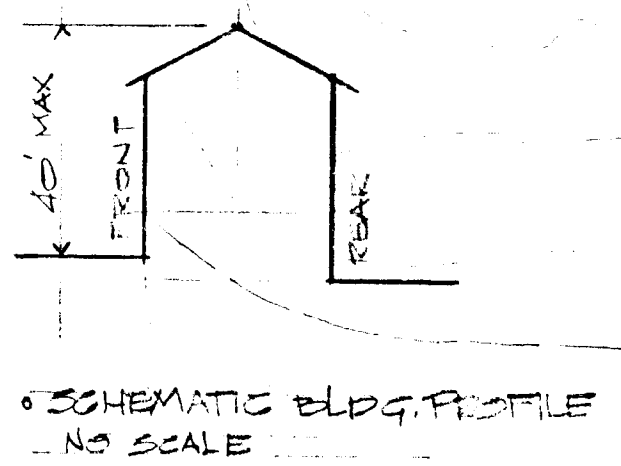
SITE ANALYSIS

1. AREA OF SITE: 12.0471
2. PRESENT ZONING: APT.
3. ALL SLOPES AND DISTURBED EARTH TO BE SLOPED OR SEEDED.
4. ALL STREETS OF INTERIOR TO BE PRIVATE.

UNIT COUNT

ALLOWABLE PROVIDED	192
NO OF 2 BR APTS.	32
NO OF 1 BR APTS.	94
AREA OF 2 BR APT.	725.50 SF.
AREA OF 1 BR APT.	630.99 SF.
TOTAL BLDG AREA	51,744.37 SF.
% OF BLDG COVERAGE	98.6%

NOTE: All existing structures and utilities shown on this plan shall be removed in accordance with Article C-6 of the Unified Development Ordinance of Howard County, Maryland. All structures shall be constructed in accordance with the provisions of the Unified Development Ordinance of Howard County, Maryland.



THIS DEVELOPMENT PLAN IS APPROVED FOR SOIL EROSION AND SEDIMENT CONTROL BY THE HOWARD COUNTY CONSERVATION DISTRICT.

Reviewed: *Elmer F. Jones* 10-17-69
Dist. Conservationist

Approved: *Robert V. Young* Date: 10-17-69
Howard SC

VILLAGE OF HARPER'S CHOICE
SECTION 3 AREA 1 LOT 1
PLAT BOOK 13 FOLIO 70
PHASE 29

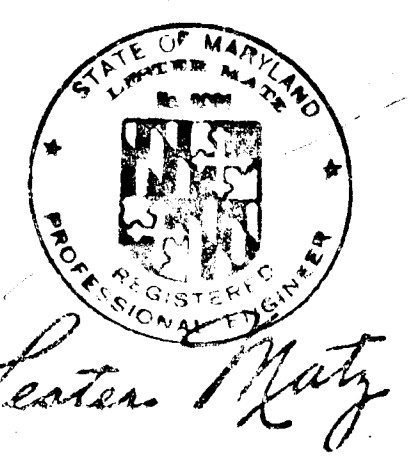
APPROVED FOR PUBLIC WATER AND PUBLIC SEWERAGE SYSTEMS, HOWARD COUNTY HEALTH DEPARTMENT.
John P. ... DATE: Aug 21 1969
COUNTY HEALTH OFFICER

APPROVED HOWARD COUNTY OFFICE OF PLANNING AND ZONING
Thomas H. ... DATE: 8-22-69
PLANNING DIRECTOR

APPROVED FOR PUBLIC WATER, PUBLIC SEWERAGE AND STORM DRAINAGE SYSTEMS AND ROADS.
William S. ... DATE: 8-18-69
HOWARD COUNTY DEPARTMENT OF PUBLIC WORKS

APPROVED
PLANNING BOARD
OF HOWARD COUNTY
DATE: 9-25-68

TURNABOUT LANE
APPROVED
DIVISION OF
LAND DEVELOPMENT
OFFICE OF
PLANNING AND ZONING
OF HOWARD COUNTY
DATE: 8-22-69



M. E. CHILDS & ASSOCIATES
1033 CROMWELL BRIDGE ROAD
BETHESDA, MARYLAND 21204

J. O. NO.	DRAWN BY	TRACED BY	CHECKED BY
1116

NO. OF APARTMENT UNITS = 186
NO. OF PARKING SPACES REQ'D = 273
NO. OF PARKING SPACES PROVIDED = 281 (1-20)
(NOTE: 17-20 PARKING SPACES INCLUDES 2 OVERHEAD)

8-10-69	2	DELETED SITE PLAN
1-15-69	2	LOCATION - BLDG #1, #3 & 2 PARKS LOT #45
9-6-68	1	SETBACKS, SEEDED AREAS AND NOTES

HARPER'S FARM-EAST APARTMENTS
GRADING PLAN
DATE: APRIL 1968