



- NOTES**
- CAMPUS WIDE TRASH PICK-UP IS PROPOSED FOR THIS BUILDING. NO INDIVIDUAL DUMPSTER IS REQUIRED.
 - ALL HANDICAP RAMPS AND HANDRAILS ARE TO MEET A.D.A. REGULATIONS.

LEGEND

[Symbol]	P-2 PAVING SEE DETAIL SHEET 4
[Symbol]	CONCRETE SIDEWALK SEE DETAIL SHEET 4
[Symbol]	STD STANDARD 7" CURB & GUTTER SEE DETAIL SHEET 4
[Symbol]	REV REVERSE 7" CURB & GUTTER SEE DETAIL SHEET 4

NOTE: A WAIVER TO ALLOW NO BASEMENT GRAVITY SANITARY SEWER SERVICE WAS GRANTED BY THE BUREAU OF ENGINEERING BY LETTER DATED MAY 17, 2001.

EXISTING 2' CONTOUR	---	300
EXISTING 10' CONTOUR	---	300
PROPOSED 2' CONTOUR	---	300
PROPOSED 10' CONTOUR	---	300
EXISTING TELEPHONE LINE	---	T
EXISTING ELECTRIC LINE	---	E
EXISTING FIBER OPTIC	---	F/O
STORM DRAIN	---	15" D
OVERHEAD WIRES	---	OH
EXISTING TREELINE	---	

FOR CONTINUATION SEE SHEET 4

FOR CONTINUATION SEE SHEET 4

APPROVED: HOWARD COUNTY DEPARTMENT OF PLANNING AND ZONING.	
<i>[Signature]</i>	7/6/01 DATE
DIRECTOR	
<i>[Signature]</i>	7/5/01 DATE
CHIEF, DEVELOPMENT ENGINEERING DIVISION	
<i>[Signature]</i>	7/6/01 DATE
CHIEF, DIVISION OF LAND DEVELOPMENT	

12-18-01	REV. STORM DRAINS, MODIFIED WALKWAY
DATE NO.	REVISION
OWNER / DEVELOPER	
HOWARD COMMUNITY COLLEGE 10901 LITTLE PATUXENT PARKWAY COLUMBIA, MARYLAND 21044-3197 ATTN: MR. JAMES O. LASH 410-772-4296	

PROJECT	HOWARD COMMUNITY COLLEGE INSTRUCTIONAL LABORATORY CENTER
AREA	PARCEL 47 ZONED POR & NT TAX MAP NO. 35, 36 BLOCK 6 & 1 5th ELECTION DISTRICT, HOWARD COUNTY, MD.

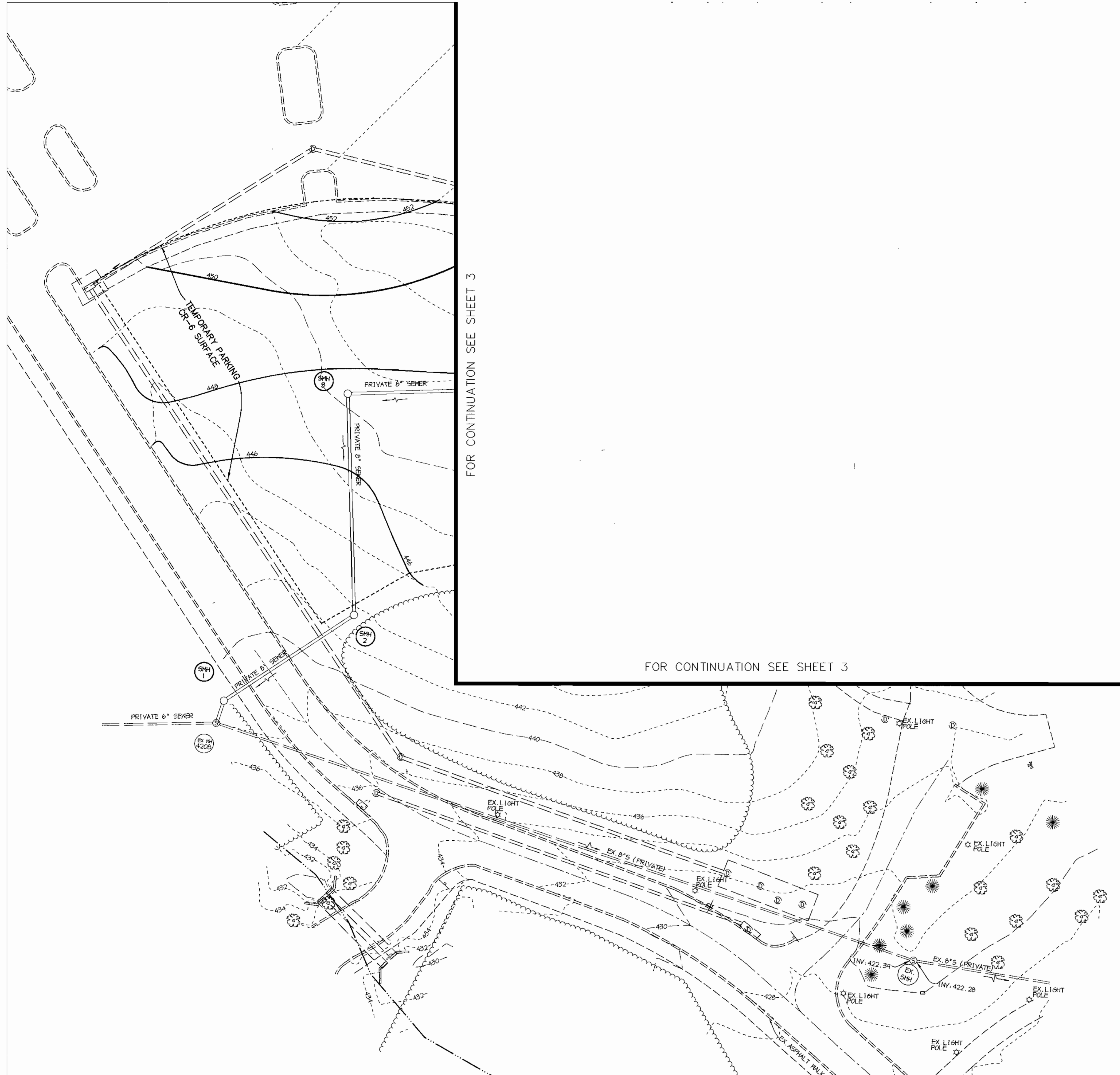
TITLE **SITE DEVELOPMENT PLAN**

RIEMER MUEGGE
a division of
Patton Harris Rust & Associates, pc
ENGINEERS • SURVEYORS • PLANNERS
LANDSCAPE ARCHITECTS • ENVIRONMENTAL SPECIALISTS
8818 Centre Park Drive, Columbia, MD 21045 • tel 410.997.8900 fax 410.997.9282

DATE	DESIGNED BY: C.J.R.
	DRAWN BY: DAM
	CHECKED BY: C.J.R.
	PROJECT NO: 00323/ SDP3.DWG
	DATE: JUNE 27, 2001
SCALE: 1"=30'	DRAWING NO. 3 OF 10

J:\PROJECT\00323\SDP3.dwg Mod Jun 27 15:44:42 2001 RIEMER MUEGGE A DIVISION OF PHRRA

2: \PROJECT\00323\SDP4.dwg Mod Jun 27 15:46:15 2001 RIEMER MUEGGE A DIVISION OF PHRA



FOR CONTINUATION SEE SHEET 3

FOR CONTINUATION SEE SHEET 3

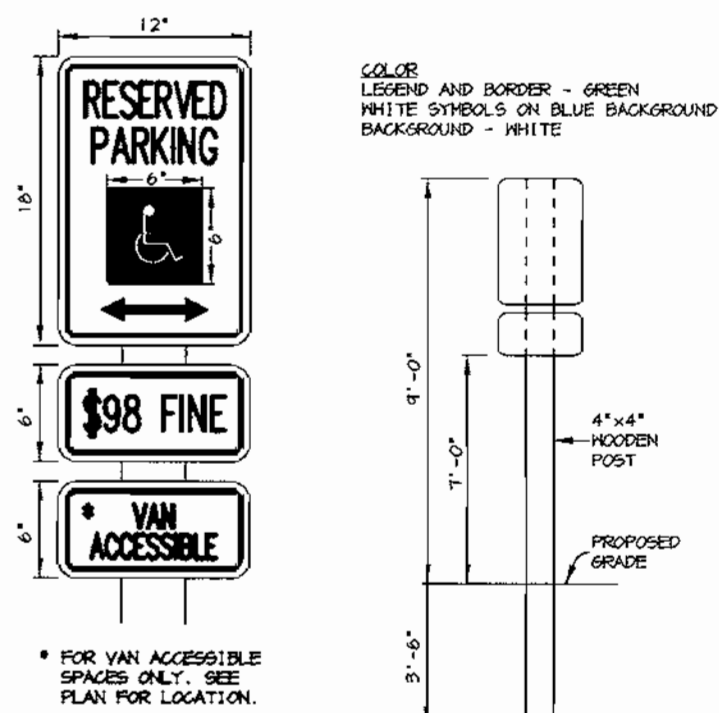
STRUCTURE SCHEDULE

STRUCTURE	TYPE	LOCATION	INV. IN	INV. OUT	TOP	REMARKS
I-1	S COMB	N 563621.02 E 1346616.13	435.20 (10") 435.03 (12")	434.78 (15")	439.6	SEE SHEET 8
I-2	S COMB	N 563610.02 E 1346735.82	435.80 (10")	435.63 (12")	438.0	SEE SHEET 8
I-3	S COMB	N 563663.16 E 1346459.64	-	436.00 (12")	439.1	HOCO STD. DETAIL SD 4.32
I-4	S	N 563612 E 1346364	436.24 (15")	436.14 (15")	441.4	SEE SHEET 10
I-5	S	N 563515 E 1346376	436.79 (15")	436.69 (15")	440.29	SEE SHEET 10
I-6	S	N 563476 E 1346454	437.36 (15") 437.36 (15")	437.26 (15")	440.5	SEE SHEET 8
I-7	S	N 563487 E 1346583	440.00 (6") 438.42 (15")	438.32 (15")	440.9	SEE SHEET 8
I-8	S	N 563478 E 1346665	440.20 (6") 439.11 (12")	438.66 (15")	441.62	SEE SHEET 8
I-9	S	N 563471 E 1346739	440.50 (6")	439.48 (12")	441.92	HOCO STD. DETAIL SD 4.22
I-10	S	N 563376 E 1346518	440.24 (6") 438.98 (12")	438.70 (15")	441.4	SEE SHEET 10
I-11	S	N 563361 E 1346659	440.04 (6")	439.78 (12")	442.3	HOCO STD. DETAIL SD 4.22
M-1	BRICK MH	N 563643 E 1346613	434.16 (15")	431.91 (42")	437.2	SEE SHEET 6
M-2	BRICK MH	N 563624 E 1346463	435.9 (12") 435.56 (12")	433.06 (42")	441.3	SEE SHEET 6
M-3	4'-0" DIA	N 563387 E 1346587	437.41 (12")	437.31 (12")	442.8	
SMH-1	4'-0" DIA	N 563135 E 1346028	430.99	430.89	439.0	HOCO STD. DETAIL 6 5.12
SMH-2	4'-0" DIA	N 563180 E 1346097	431.52	431.42	443.5	HOCO STD. DETAIL 6 5.12
SMH-3	4'-0" DIA	N 563297 E 1346094	432.23	432.13	447.5	HOCO STD. DETAIL 6 5.12
SMH-4	4'-0" DIA	N 563301 E 1346216	432.97	432.87	448.2	HOCO STD. DETAIL 6 5.12
SMH-5	4'-0" DIA	N 563474 E 1346571	435.19	435.02	441.4	HOCO STD. DETAIL 6 5.12

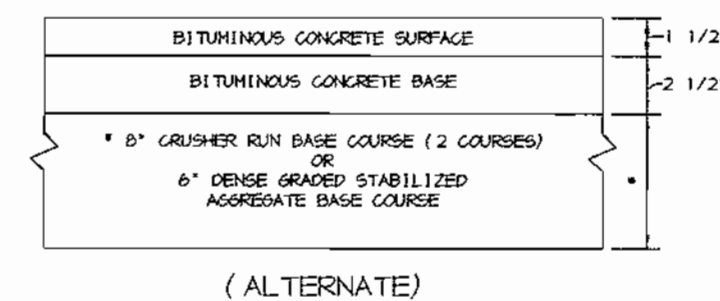
NOTES: LOCATION OF "S" INLETS AND MANHOLES IS AT CENTER OF TOP COVER;
"S" COMBINATION INLETS IS CENTER OF THROAT OPENING AT FACE OF CURB;

PIPE SCHEDULE

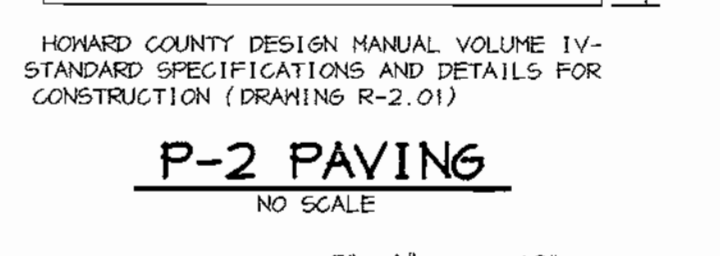
PIPE LENGTH	SIZE	TYPE
31	4"	ADS, N-12
72	10"	ADS, N-12
460	12"	ADS, N-12
529	15"	ADS, N-12



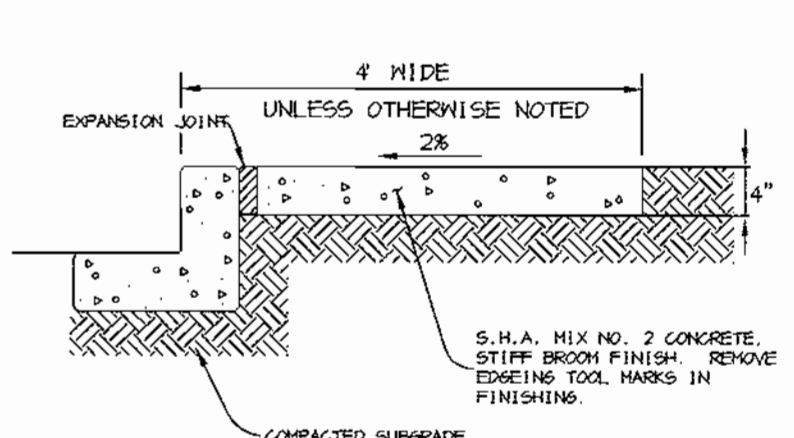
HANDICAP SIGN DETAIL
NO SCALE



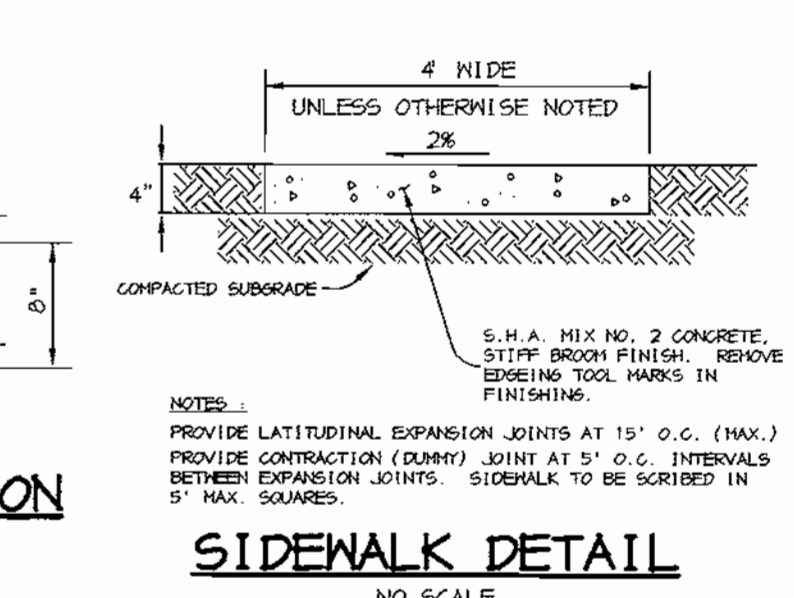
P-2 PAVING
NO SCALE



REVERSE 7" COMBINATION CURB AND GUTTER
NO SCALE



SIDEWALK DETAIL ADJACENT TO CURB
NO SCALE



SIDEWALK DETAIL
NO SCALE

APPROVED: HOWARD COUNTY DEPARTMENT OF PLANNING AND ZONING.
Paul A. Smith 7/6/01
 DIRECTOR DATE
Chris H. Hester 7/5/01
 CHIEF, DEVELOPMENT ENGINEERING DIVISION DATE
Chris Hester 7/4/01
 CHIEF, DIVISION OF LAND DEVELOPMENT DATE

12-18-01 **REVISED STRUCTURE SCHEDULE AND PIPE SCHEDULE**
 DATE NO. REVISION
 OWNER / DEVELOPER
 HOWARD COMMUNITY COLLEGE
 10901 LITTLE PATUXENT PARKWAY
 COLUMBIA, MARYLAND 21044-3197
 ATTN: MR. JAMES O. LASH
 410-772-4296

PROJECT **HOWARD COMMUNITY COLLEGE INSTRUCTIONAL LABORATORY CENTER**
 AREA PARCEL 47 ZONED POR & NT
 TAX MAP NO. 35, 36 BLOCK 6 & 1
 5th ELECTION DISTRICT, HOWARD COUNTY, MD.

TITLE **SITE DEVELOPMENT PLAN & DETAILS**
 a DIVISION OF
RIEMER MUEGGE
 Patton Harris Rust & Associates, pc
 ENGINEERS & SURVEYORS & PLANNERS
 LANDSCAPE ARCHITECTS & ENVIRONMENTAL SPECIALISTS
 8818 Centre Park Drive, Columbia, MD 21045 • tel 410.997.8600 fax 410.997.8282

DATE
 DESIGNED BY: C.J.R.
 DRAWN BY: DAM
 CHECKED BY: C.J.R.
 PROJECT NO. 00323/
 SDP4.DWG
 DATE: JUNE 27, 2001
 SCALE: 1"=30'
 DRAWING NO. 4 OF 10
 CHRISTOPHER J. REID #19949



SOILS CLASSIFICATION
 B0-BALILE SILT LOAM
 EK2-ELIOAK SILT LOAM, 3 TO 8 PERCENT SLOPES, MODERATELY ERODED
 GH2-GLENVIEW SILT LOAM, 3 TO 8 PERCENT SLOPES, MODERATELY ERODED
 MI2-MANOR LOAM, 8 TO 15 PERCENT SLOPES, MODERATELY ERODED
 MI3-MANOR LOAM, 8 TO 15 PERCENT SLOPES, SEVERELY ERODED

BY THE DEVELOPER:
 I/WE CERTIFY THAT ALL DEVELOPMENT AND CONSTRUCTION WILL BE DONE ACCORDING TO THIS PLAN, AND THAT ANY RESPONSIBLE PERSONNEL INVOLVED IN THE CONSTRUCTION PROJECT WILL HAVE A CERTIFICATE OF ATTENDANCE AT A DEPARTMENT OF THE ENVIRONMENT APPROVED TRAINING PROGRAM FOR THE CONTROL OF SEDIMENT AND EROSION BEFORE BEGINNING THE PROJECT. I ALSO AUTHORIZE PERIODIC ON-SITE INSPECTIONS BY THE HOWARD SOIL CONSERVATION DISTRICT.
James O. Lash 6-29-01
 DEVELOPER DATE

BY THE ENGINEER:
 I CERTIFY THAT THIS PLAN FOR EROSION AND SEDIMENT CONTROL REPRESENTS A PRACTICAL AND WORKABLE PLAN BASED ON MY PERSONAL KNOWLEDGE OF THE SITE CONDITIONS AND THAT IT WAS PREPARED IN ACCORDANCE WITH THE REQUIREMENTS OF THE HOWARD SOIL CONSERVATION DISTRICT.
Christopher J. Reid 6-29-01
 ENGINEER DATE

THESE PLANS HAVE BEEN REVIEWED FOR THE HOWARD SOIL CONSERVATION DISTRICT AND MEET THE TECHNICAL REQUIREMENTS FOR SOIL EROSION AND SEDIMENT CONTROL.
Jim Myers 7/6/01
 NATURAL RESOURCES CONSERVATION SERVICE DATE

THIS DEVELOPMENT PLAN IS IN ACCORDANCE WITH THE SOIL EROSION AND SEDIMENT CONTROL PLAN OF THE HOWARD SOIL CONSERVATION DISTRICT.
John Blanton 7/2/01
 HOWARD SOIL CONSERVATION DISTRICT DATE

APPROVED: HOWARD COUNTY DEPARTMENT OF PLANNING AND ZONING.
James O. Lash 7/6/01
 DIRECTOR DATE
Christopher J. Reid 7/5/01
 CHIEF, DEVELOPMENT ENGINEERING DIVISION DATE
James O. Lash 7/6/01
 CHIEF, DIVISION OF LAND DEVELOPMENT DATE

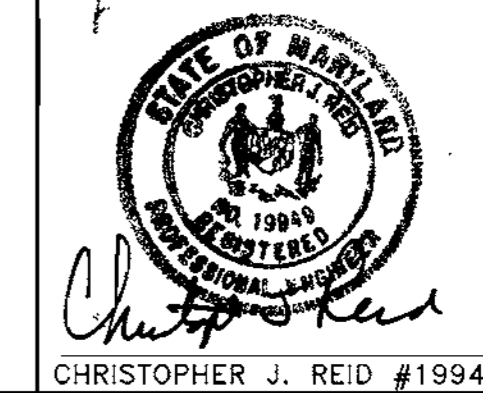
12-18-01 REV. STORM DRAINS, MODIFIED WALKWAY
 DATE NO. REVISION
 OWNER / DEVELOPER
 HOWARD COMMUNITY COLLEGE
 10901 LITTLE PATUXENT PARKWAY
 COLUMBIA, MARYLAND 21044-3197
 ATTN: MR. JAMES O. LASH
 410-772-4296

PROJECT
**HOWARD COMMUNITY COLLEGE
 INSTRUCTIONAL LABORATORY CENTER**
 AREA
 PARCEL 47 ZONED POR & NT
 TAX MAP NO. 35, 36 BLOCK 6 & 1
 5th ELECTION DISTRICT, HOWARD COUNTY, MD.

TITLE
GRADING AND SEDIMENT CONTROL PLAN

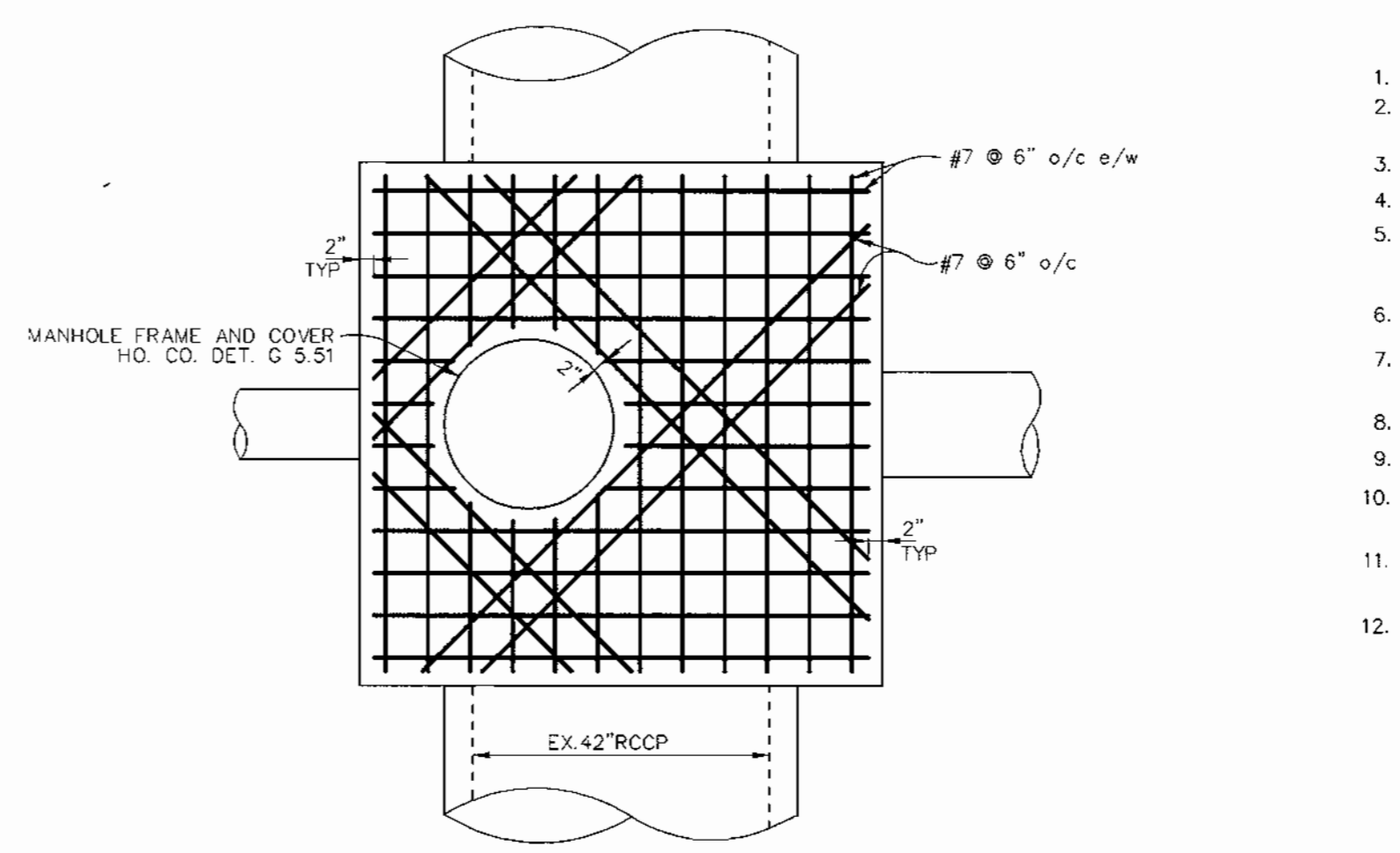
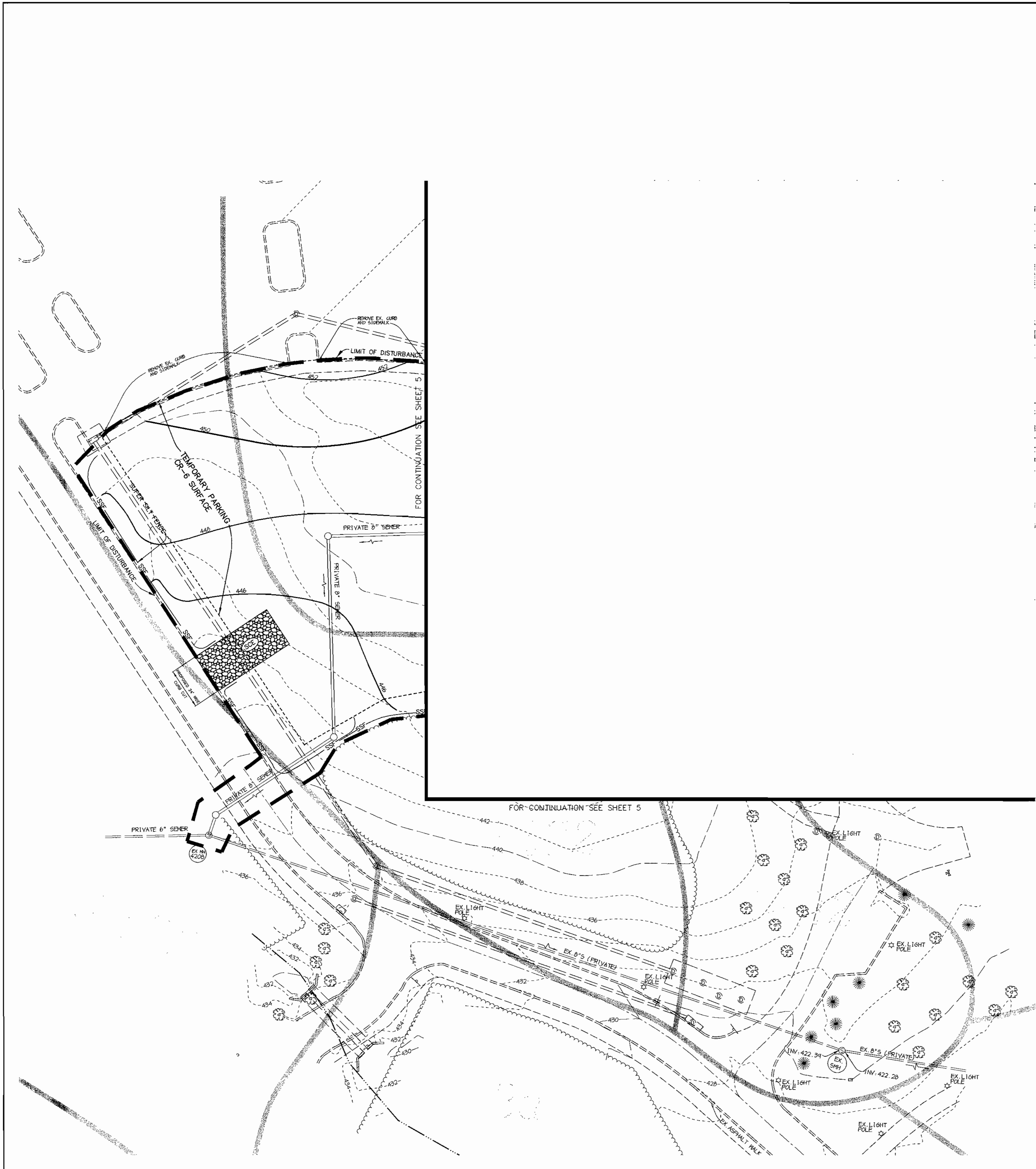
RIEMER MUEGGE
 a division of
Patton Harris Rust & Associates, pc
 ENGINEERS • SURVEYORS • PLANNERS
 LANDSCAPE ARCHITECTS • ENVIRONMENTAL SPECIALISTS
 8818 Centre Park Drive, Columbia, MD 21046 • tel 410.997.8500 fax 410.997.9282

DESIGNED BY: C.J.R.
 DRAWN BY: DAM
 CHECKED BY: C.J.R.
 PROJECT NO: 00323/
 SDP8.DWG
 DATE: JUNE 27, 2001
 SCALE: 1"=30'
 DRAWING NO. 5 OF 10

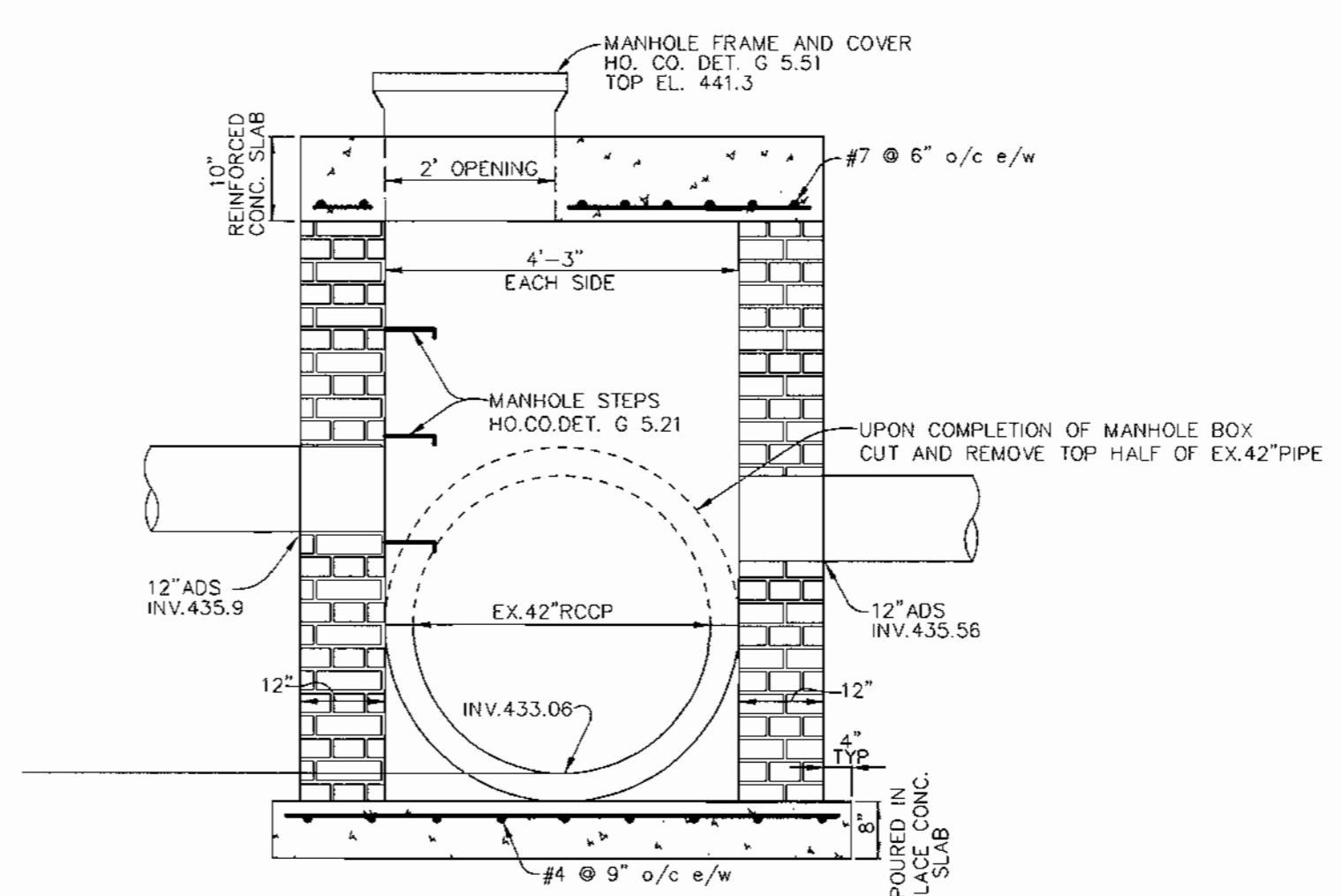


FOR CONTINUATION SEE SHEET 6

Project: 00323\SDP8.dwg Mod: Jun 27 15:50:30 2001 RIEMER MUEGGE A DIVISION OF PHRBA

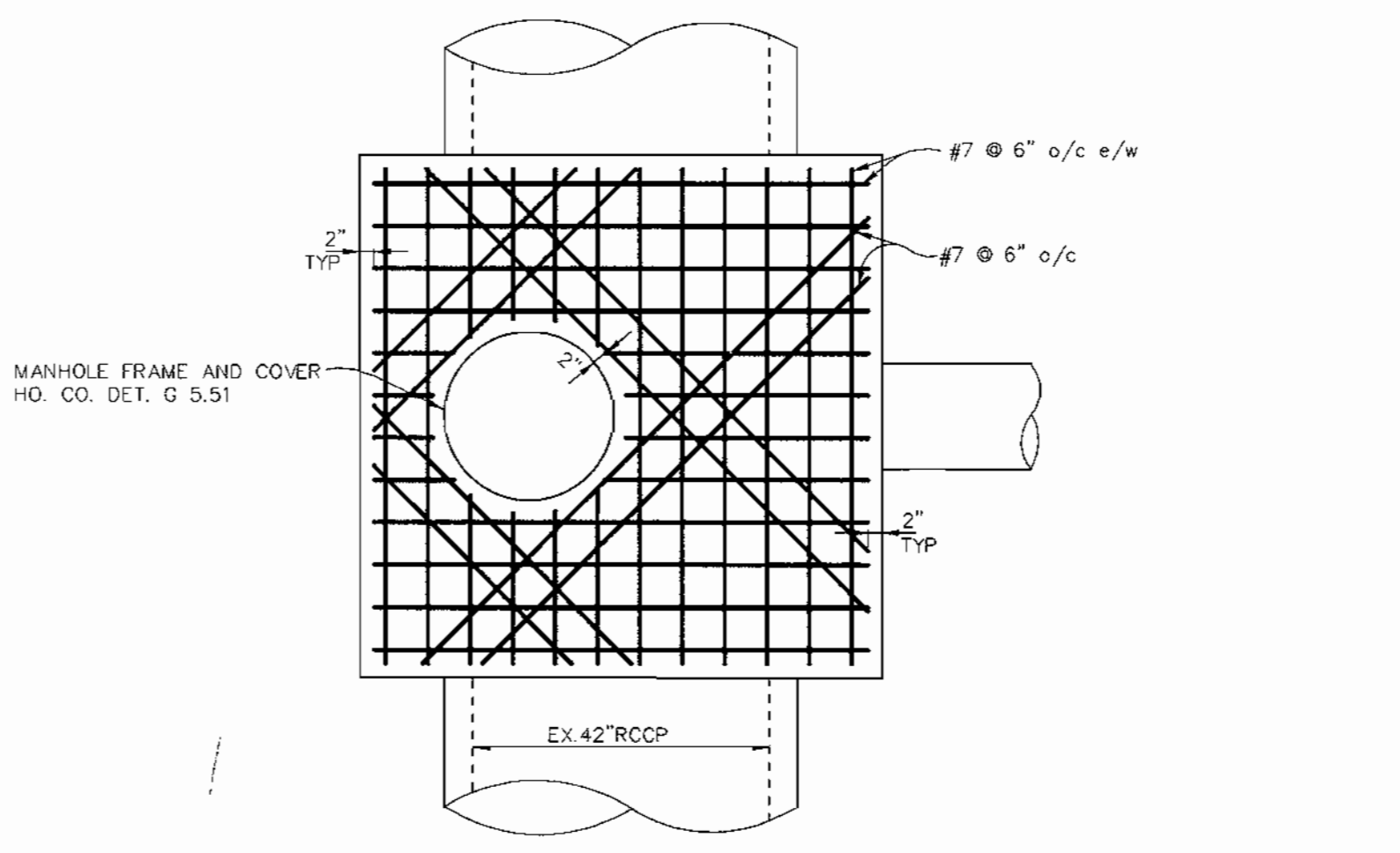


PLAN VIEW
SCALE: 1" = 2'

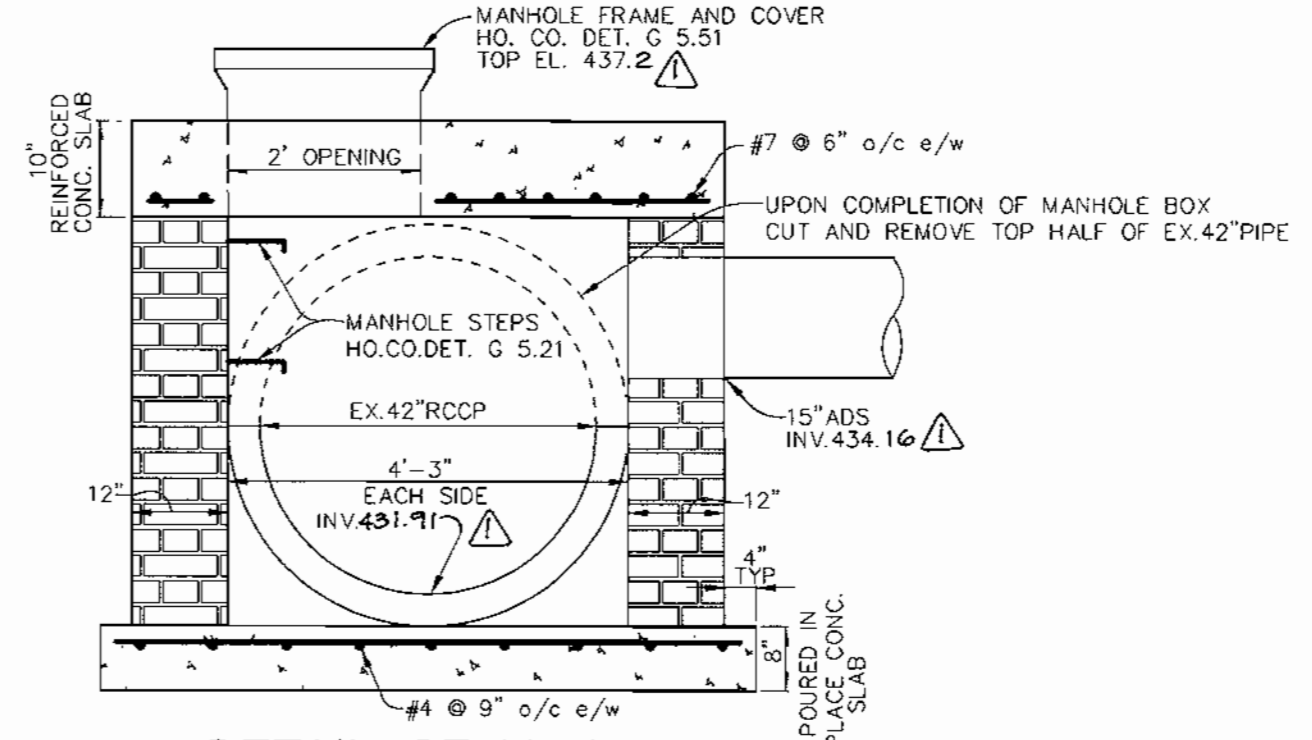


DETAIL OF M-2
SCALE: 1" = 2'

NOTE: SEE GENERAL NOTES APPLICABLE TO ALL BRICK ON MANHOLES HO.CO.DET. G 5.01.



PLAN VIEW
SCALE: 1" = 2'



DETAIL OF M-1
SCALE: 1" = 2'

NOTE: SEE GENERAL NOTES APPLICABLE TO ALL BRICK ON MANHOLES HO.CO.DET. G 5.01.

SEQUENCE OF CONSTRUCTION

1. OBTAIN GRADING PERMIT.
2. INSTALL HANDICAP HANDRAIL, TEMPORARY WALKWAYS AND CONSTRUCTION FENCE. (3 DAYS)
3. INSTALL SCE AND SUPER SILT FENCE AND SILT FENCE (2 DAYS)
4. REMOVE EXISTING FEATURES PER DEMOLITION PLAN.
5. WITH PERMISSION OF HOWARD COUNTY SEDIMENT CONTROL INSPECTOR, BEGIN ROUGH GRADING AND INSTALL STORM DRAINS WITH INLET PROTECTION.
6. UPON COMPLETION OF STORM DRAINS, BEGIN BUILDING CONSTRUCTION.
7. AS SUBGRADE ELEVATIONS ARE ESTABLISHED, INSTALL REMAINING UTILITIES, INCLUDING SEWER AND WATER. (3 WEEKS)
8. INSTALL INLET PROTECTION (1 DAY)
9. INSTALL CURB & GUTTER THEN PAVE. (1 WEEK)
10. APPLY TOPSOIL AND STABILIZE DISTURBED AREAS IN ACCORDANCE WITH PERMANENT SEEDING NOTES. (2 DAYS)
11. PERFORM BUILDING CONSTRUCTION, FINE GRADING, LANDSCAPING, LIGHTING AND SIDEWALKS. (6 MONTHS)
12. UPON APPROVAL OF HOWARD COUNTY SEDIMENT CONTROL INSPECTOR, REMOVE ALL REMAINING SEDIMENT CONTROL DEVICES AND STABILIZE REMAINING DISTURBED AREAS IN ACCORDANCE WITH PERMANENT SEEDING NOTES.

BY THE DEVELOPER :

I/WE CERTIFY THAT ALL DEVELOPMENT AND CONSTRUCTION WILL BE DONE ACCORDING TO THIS PLAN, AND THAT ANY RESPONSIBLE PERSONNEL INVOLVED IN THE CONSTRUCTION PROJECT WILL HAVE A CERTIFICATE OF ATTENDANCE AT A DEPARTMENT OF THE ENVIRONMENT APPROVED TRAINING PROGRAM FOR THE CONTROL OF SEDIMENT AND EROSION BEFORE BEGINNING THE PROJECT. I ALSO AUTHORIZE PERIODIC ON-SITE INSPECTIONS BY THE HOWARD SOIL CONSERVATION DISTRICT.

Jim O'Neil 6-29-01
DEVELOPER DATE

BY THE ENGINEER :

I CERTIFY THAT THIS PLAN FOR EROSION AND SEDIMENT CONTROL REPRESENTS A PRACTICAL AND WORKABLE PLAN BASED ON MY PERSONAL KNOWLEDGE OF THE SITE CONDITIONS AND THAT IT WAS PREPARED IN ACCORDANCE WITH THE REQUIREMENTS OF THE HOWARD SOIL CONSERVATION DISTRICT.

Christopher J. Reid 6-29-01
ENGINEER DATE

THESE PLANS HAVE BEEN REVIEWED FOR THE HOWARD SOIL CONSERVATION DISTRICT AND MEET THE TECHNICAL REQUIREMENTS FOR SOIL EROSION AND SEDIMENT CONTROL.

Jim Meyer 7/2/01
NATURAL RESOURCE CONSERVATION SERVICE DATE

THIS DEVELOPMENT PLAN IS APPROVED FOR SOIL EROSION AND SEDIMENT CONTROL BY THE HOWARD SOIL CONSERVATION DISTRICT

John R. Anderson 7/2/01
HOWARD SOIL CONSERVATION DISTRICT DATE

APPROVED : HOWARD COUNTY DEPARTMENT OF PLANNING AND ZONING.

James J. Batts 7/6/01
DIRECTOR DATE

William D. ... 7/5/01
CHIEF, DEVELOPMENT ENGINEERING DIVISION DATE

Condy Hamrick 7/6/01
CHIEF, DIVISION OF LAND DEVELOPMENT DATE

12-18-01	REVISION	M-1 DETAIL
DATE	NO.	REVISION

OWNER / DEVELOPER
HOWARD COMMUNITY COLLEGE
10901 LITTLE PATUXENT PARKWAY
COLUMBIA, MARYLAND 21044-3197
ATTN: MR. JAMES O. LASH
410-772-4296

PROJECT
HOWARD COMMUNITY COLLEGE
INSTRUCTIONAL LABORATORY CENTER

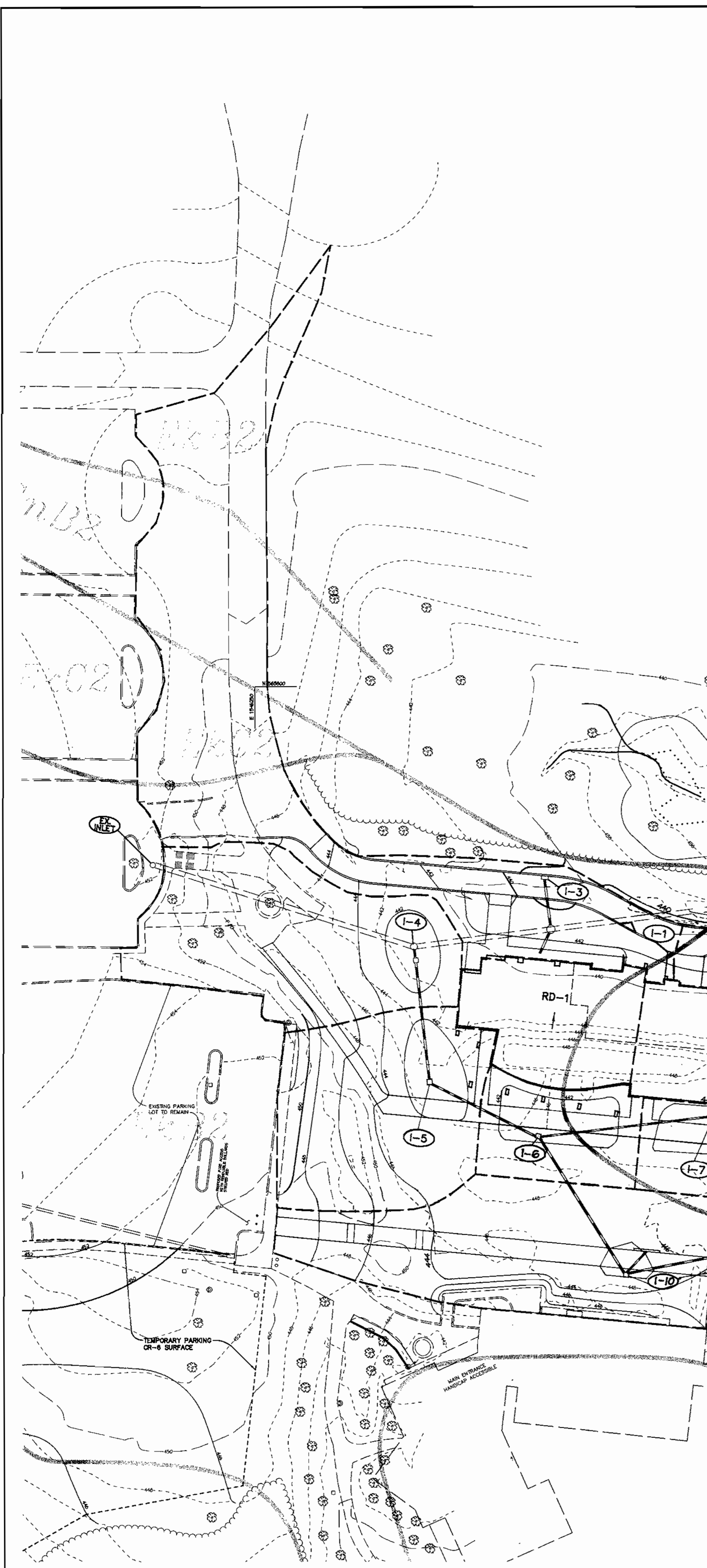
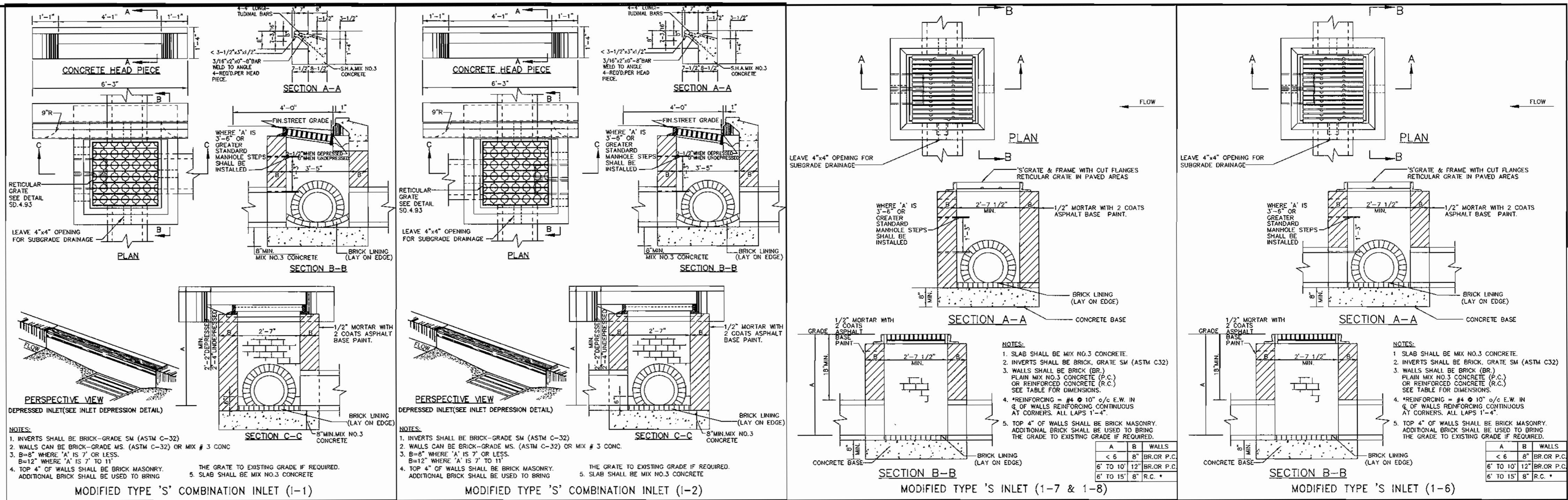
AREA PARCEL 47 ZONED POR & NT
TAX MAP NO. 35, 36 BLOCK 6 & 1
5th ELECTION DISTRICT, HOWARD COUNTY, MD.

TITLE
GRADING AND SEDIMENT CONTROL PLAN

RIEMER MUEGGE
a division of
Patton Harris Rust & Associates, pc
ENGINEERS • SURVEYORS • PLANNERS
LANDSCAPE ARCHITECTS • ENVIRONMENTAL SPECIALISTS
8818 Centre Park Drive, Columbia, MD 21045 • tel 410.997.8000 fax 410.997.9282

DATE _____ DESIGNED BY : C.J.R.
DRAWN BY: DAM
CHECKED BY: C.J.R.
PROJECT NO : 00323/
SDP 7.DWG
DATE : JUNE 27, 2001
SCALE : 1"=30'
DRAWING NO. 6 OF 10





DRAINAGE AREA CHART

INLET	D.A.	'C'	%IMP
I-1	0.10	0.65	64
I-2	0.16	0.51	50
I-3	1.04	0.48	38
I-4	0.52	0.39	23
I-5	0.45	0.32	13
I-6	0.19	0.29	16
I-7	0.15	0.25	13
I-8	0.15	0.25	13
I-9	0.07	0.26	14
I-10	0.59	0.31	13
I-11	0.25	0.37	28
EX-INLET	16.8	0.50	41

APPROVED: HOWARD COUNTY DEPARTMENT OF PLANNING AND ZONING.

James Rust 7/6/01 DATE
DIRECTOR

John DeMunnis 7/5/01 DATE
CHIEF, DEVELOPMENT ENGINEERING DIVISION

Wanda Hamilton 7/6/01 DATE
CHIEF, DIVISION OF LAND DEVELOPMENT

12-18-01 MODIFY WALKWAY, REVISED STORM DRAIN & DRAINAGE DIVIDES

DATE NO. REVISION

OWNER / DEVELOPER
HOWARD COMMUNITY COLLEGE
10901 LITTLE PATUXENT PARKWAY
COLUMBIA, MARYLAND 21044-3197
ATTN: MR. JAMES O. LASH
410-772-4296

PROJECT
HOWARD COMMUNITY COLLEGE INSTRUCTIONAL LABORATORY CENTER

AREA
PARCEL 47 ZONED POR & NT
TAX MAP NO. 35, 36 BLOCK 6 & 1
5th ELECTION DISTRICT, HOWARD COUNTY, MD.

TITLE
DRAINAGE AREA MAP

RIEMER MUEGGE
a division of:
Patton Harris Rust & Associates, pc
ENGINEERS • SURVEYORS • PLANNERS
LANDSCAPE ARCHITECTS • ENVIRONMENTAL SPECIALISTS
8818 Centre Park Drive, Columbia, MD 21045 • tel 410.987.8900 fax 410.987.9282

DATE

DESIGNED BY: C.J.R.
DRAWN BY: DAM
CHECKED BY: C.J.R.
PROJECT NO: 00323/
SDP9.DWG
DATE: JUNE 27, 2001
SCALE: 1" = 50'
DRAWING NO. 8 OF 10

CHRISTOPHER J. REID #19949

