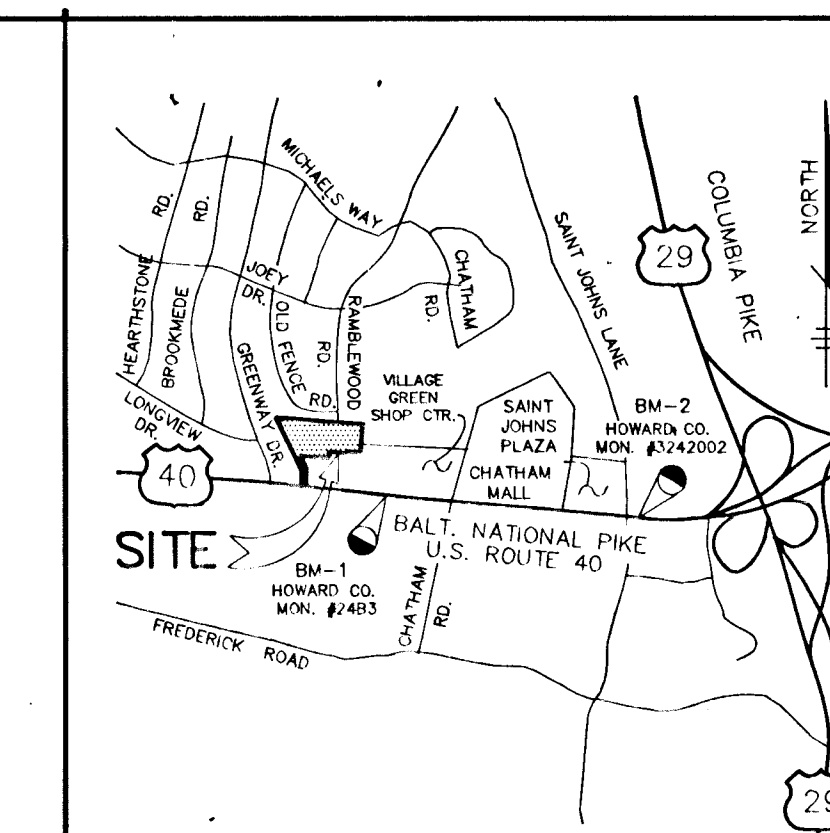


SHEET INDEX

- 1 TITLE SHEET
- 2 PLAN & PROFILE OF RAMBLEWOOD ROAD
- 3 GRADING AND SEDIMENT CONTROL PLAN & DRAINAGE AREA MAP
- 4 SEDIMENT CONTROL NOTES & DETAILS
- 5 STORM DRAIN PROFILES & DETAILS
- 6 LANDSCAPE PLAN

CHATHAM MEWS ROADWAYS, STORM DRAINS, & STORMWATER MANAGEMENT

LOTS 1 - 17
2nd ELECTION DISTRICT
HOWARD COUNTY, MARYLAND



VICINITY MAP
SCALE: 1" = 2,000'

BENCHMARKS CONTROL USED FOR AS-BUILT SURVEY.

B.M. # 1 (NAD 83 HORIZ. DATUM)
N. 586661.201, E. 1359226.385 ELEV. = 385.295
CONCRETE MONUMENT 18" SOUTH OF SOUTH EDGE OF ROUTE 40 EAST (TRAFFIC LANE) 150' EAST OF EAST END OF SUNOCO STATION OPPOSITE DOCTORS BUILDING 1.5' BELOW SURFACE.

B.M. # 2 (NAD 27 HORIZ. DATUM)
N. 525789.095, E. 849475.765 ELEV. = 400.780
CONCRETE MONUMENT AT SURFACE 1' NORTH OF EDGE OF MACADAM SHOULDER OF ROUTE 40 WEST (TRAFFIC LANE) 150' EAST OF ST. JOHNS LANE.

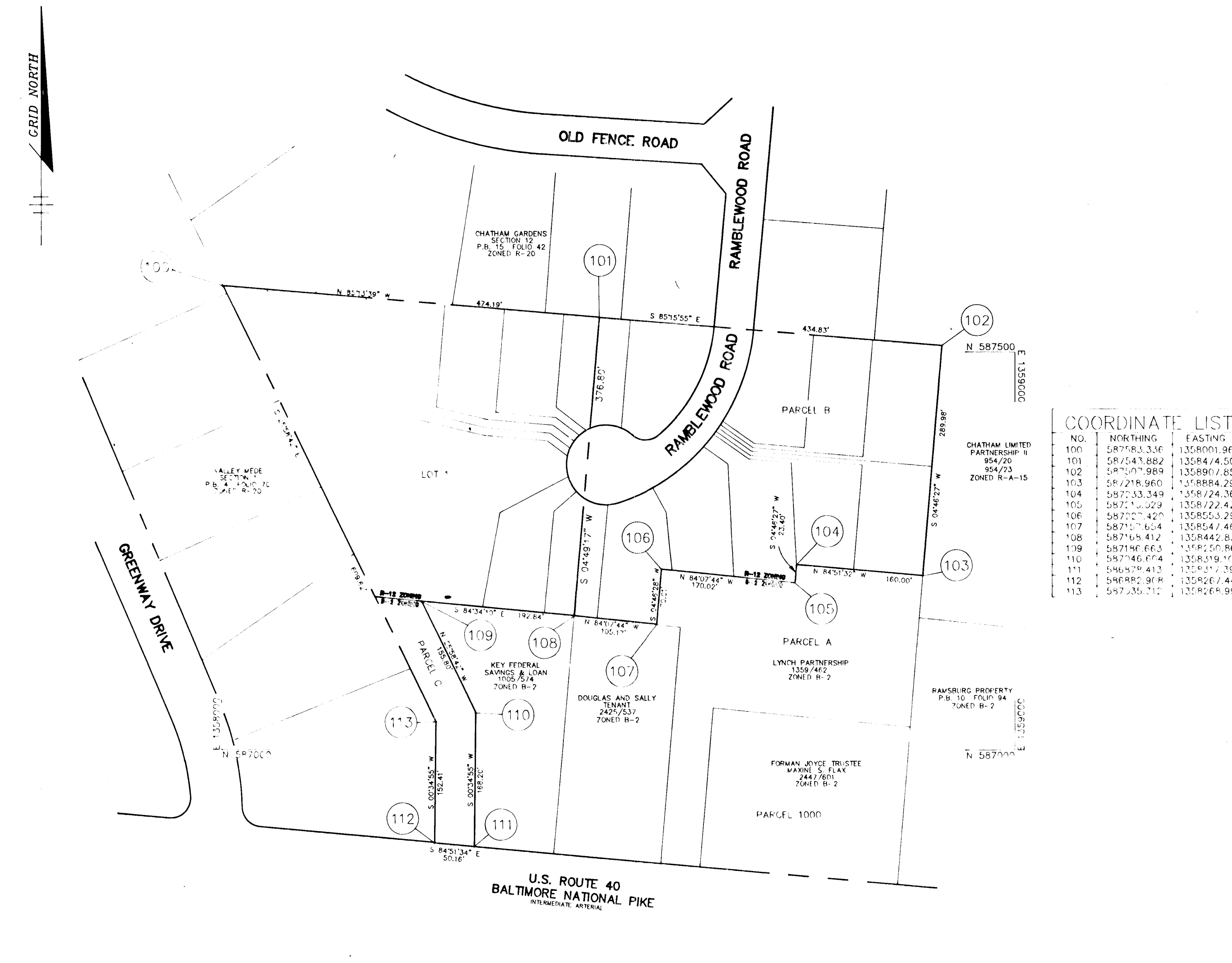
NOTE: HORIZONTAL CONTROL WAS ESTABLISHED ON THE NAD 83 (B.M. #) MONUMENT. THE BACKSIGHT BEARING TO THE NAD 27 (B.M. #2) MONUMENT IS 0.7 SECONDS OFF FROM THE NAD 83 DATUM AND IS ASSUMED NEGLIGIBLE.

GENERAL NOTES

1. ALL CONSTRUCTION SHALL BE IN ACCORDANCE WITH THE LATEST STANDARDS AND SPECIFICATIONS OF HOWARD COUNTY PLUS MSHA STANDARDS AND SPECIFICATIONS, IF APPLICABLE.
2. APPROXIMATE LOCATION OF EXISTING UTILITIES ARE SHOWN. THE CONTRACTOR SHALL TAKE ALL NECESSARY PRECAUTIONS TO PROTECT THE EXISTING UTILITIES AND MAINTAIN UNINTERRUPTED SERVICE. ANY DAMAGE INCURRED DUE TO CONTRACTOR'S OPERATION SHALL BE REPAIRED IMMEDIATELY AT THE CONTRACTOR'S EXPENSE. EXISTING UTILITIES ARE SHOWN BASED ON THE BEST AVAILABLE INFORMATION.
3. THE CONTRACTOR SHALL TEST PIT EXISTING UTILITIES AT LEAST (5) DAYS BEFORE STARTING WORK SHOWN ON THESE DRAWINGS.
4. THE CONTRACTOR SHALL NOTIFY THE DEPARTMENT OF PUBLIC WORKS/CONSTRUCTION INSPECTION DIVISION AT (410) 313-1880 AT LEAST FIVE (5) WORKING DAYS PRIOR TO THE START OF WORK.
5. THE CONTRACTOR SHALL NOTIFY "MISS UTILITY" AT 1-800-257-7777 AT LEAST 48 HOURS PRIOR TO ANY EXCAVATION WORK.

BELL TELEPHONE SYSTEM	393-3649
LONG DISTANCE CABLE DIVISION	393-3553 OR 3554
BALTIMORE GAS AND ELECTRIC CO.	539-8000
HOWARD COUNTY BUREAU OF UTILITIES	313-6900
COLONIAL PIPELINE	795-1390
6. TRAFFIC CONTROL DEVICES, MARKINGS, AND SIGNING SHALL BE IN ACCORDANCE WITH THE LATEST EDITION OF THE MANUAL ON UNIFORM TRAFFIC CONTROL DEVICES (MUTCD). ALL STREET AND REGULATORY SIGNS SHALL BE IN PLACE PRIOR TO THE PLACEMENT OF ANY ASPHALT.
7. ALL INLETS SHALL BE CONSTRUCTED IN ACCORDANCE WITH HOWARD COUNTY STANDARDS.
8. ALL STREET CURB RETURNS SHALL HAVE 25' RADII UNLESS OTHERWISE NOTED.
9. STORM DRAIN TRENCHES WITHIN ROAD RIGHT OF WAY SHALL BE BACKFILLED AND COMPACTED IN ACCORDANCE WITH THE HOWARD COUNTY DESIGN MANUAL, VOLUME IV, I.A., STANDARD SPECIFICATIONS AND DETAILS FOR CONSTRUCTION, LATEST AMENDMENTS.
10. PIPE SHALL NOT BE INSTALLED BY THE CONTRACTOR UNTIL THE LENGTH CALLED FOR AT EACH STATION HAS BEEN APPROVED BY THE ENGINEER IN THE FIELD.
11. DESIGNER TRAFFIC SPEED IN ACCORDANCE WITH THE AMERICAN ASSOCIATION OF STATE HIGHWAY OFFICIAL STANDARDS:

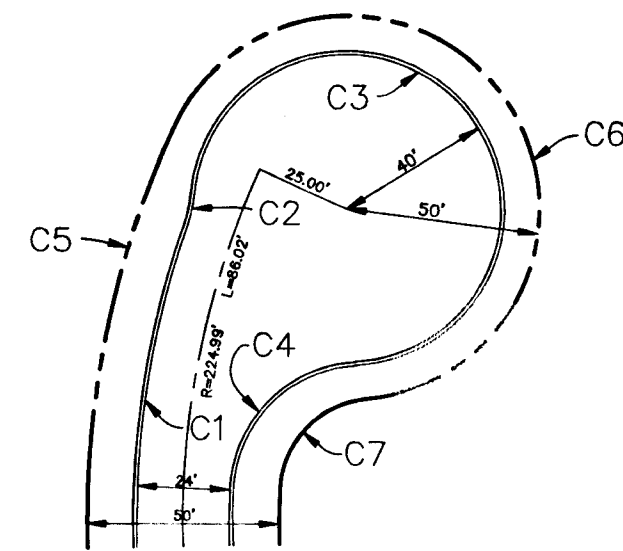
RAMBLEWOOD ROAD	25 M.P.H.
-----------------	-----------
12. ALL ELEVATIONS SHOWN ARE BASED ON THE U.S.C. AND U.S. MEAN SEA LEVEL DATUM, 1928.
13. ALL FILL AREAS WITHIN ROADWAY AND UNDER STRUCTURES TO BE COMPACTED TO A MINIMUM OF 95% COMPACTION OF AASHTO T-190.
14. ALL PIPE ELEVATIONS SHOWN ARE IN FEET ELEVATIONS.
15. PROFILES STATIONS SHALL BE ADJUSTED AS NECESSARY TO CONFORM TO PLAN DIMENSIONS.
16. SUBJECT PROPERTY ZONED R-12 PER 10-18-93 COMPREHENSIVE ZONING PLAN.
17. NO PIPE SHALL BE LAID UNTIL LINES OF EXCAVATION HAVE BEEN BRIGHT WITHIN 6" OF FINISHED GRADE.
18. ALL STORM DRAIN PIPE BEDDING SHALL BE CLASS "C" AS SHOWN IN FIG. "1" & VOLUME 1 OF HOWARD COUNTY DESIGN MANUAL UNLESS OTHERWISE NOTED.
19. SEE DEPARTMENT OF PLANNING AND ZONING FILE NOS. 3-93-20, 4-79-10, 4-94-08, 2B B88M, 2B B89M, 4-93-113, 4-93-113, 4-93-113, 4-93-113.
20. LIGHT POLES, ARMS AND FIXTURES FOR STREET LIGHTS SHALL BE IN ACCORDANCE WITH HOWARD COUNTY DESIGN MANUAL, VOLUME IV, I.A., "DETAILS FOR STREET LIGHTS IN RESIDENTIAL DEVELOPMENTS," JUNE 1993.
21. THE STORMWATER MANAGEMENT FACILITY PROVIDED FOR THIS SITE IS CLASS "A" HAZARD FACILITY. WATER QUALITY IS PROVIDED BY EXTENSIVE ATTENTION.
22. TOPOGRAPHY SHOWN HEREON WAS PERFORMED BY RIEMER MUEGGE & ASSOCIATES, INC. DEC. 1993. ALL CONTOURS ARE TWO FOOT INTERVALS.
23. PUBLIC WATER AND SEWER SYSTEMS AS PER CONTRACT NO. "A-13712" AND TO BE LOCATED FOR THIS SITE. SEWER SERVICE AREA WHERE WATER TREATMENT PLANT IS LOCATED.
24. NOISE STUDY WAS PREPARED BY RIEMER MUEGGE & ASSOCIATES, INC. AN APPROX. 4-94-06.
25. GEOTECHNICAL STUDY FOR STORMWATER MANAGEMENT FACILITY FOR THIS PROJECT IS PROVIDED BY AEC ASSOCIATES, INC. 12/28/93.
26. ALL STREET LIGHTS SHALL BE LOCATED BETWEEN 1' AND 4' FROM FACE OF CURB.
27. STREET LIGHT PLACEMENT AND TYPE OF FIXTURE AND POLE SEE T.E. SHALL BE IN ACCORDANCE WITH THE HOWARD COUNTY DESIGN MANUAL, VOLUME IV, I.A., AS MODIFIED BY THE "DETAILS FOR STREET LIGHTS IN RESIDENTIAL DEVELOPMENTS" (JUNE 1993) WHICH INCLUDES "DETAILS FOR STREET LIGHTS IN RESIDENTIAL DEVELOPMENTS" STREET LIGHTS TO BE PLACED AT 1' FROM STREET LIGHTS.
28. 7B B89M - REQUESTED A ZONING CHANGE FROM R-12 TO B-2 FOR 5.2 ACRES OF PARCELS 979 AND 1137 BOTH BEING THE PLANNING BOARD RECOMMENDATION FOR REZONING. THE REZONING WITHDREW THE APPLICATION ON JULY 1, 1994 DUE TO THE ZONING BOARD HEARING.
29. 2B B88M - REQUESTED A ZONING CHANGE FROM R-12 TO B-2 FOR 5.2 ACRES OF PARCELS 979 AND 1137 BOTH BEING THE PLANNING BOARD RECOMMENDATION FOR REZONING. THE REZONING WITHDREW THE APPLICATION ON JULY 1, 1994 DUE TO THE ZONING BOARD HEARING.
30. 4B B89M - REQUESTED A ZONING CHANGE FROM R-12 TO B-2 FOR 5.2 ACRES OF PARCELS 979 AND 1137 BOTH BEING THE PLANNING BOARD RECOMMENDATION FOR REZONING. THE REZONING WITHDREW THE APPLICATION ON JULY 1, 1994 DUE TO THE ZONING BOARD HEARING.
31. 4B B89M - REQUESTED A ZONING CHANGE FROM R-12 TO B-2 FOR 5.2 ACRES OF PARCELS 979 AND 1137 BOTH BEING THE PLANNING BOARD RECOMMENDATION FOR REZONING. THE REZONING WITHDREW THE APPLICATION ON JULY 1, 1994 DUE TO THE ZONING BOARD HEARING.
32. 4B B89M - REQUESTED A ZONING CHANGE FROM R-12 TO B-2 FOR 5.2 ACRES OF PARCELS 979 AND 1137 BOTH BEING THE PLANNING BOARD RECOMMENDATION FOR REZONING. THE REZONING WITHDREW THE APPLICATION ON JULY 1, 1994 DUE TO THE ZONING BOARD HEARING.
33. 4B B89M - REQUESTED A ZONING CHANGE FROM R-12 TO B-2 FOR 5.2 ACRES OF PARCELS 979 AND 1137 BOTH BEING THE PLANNING BOARD RECOMMENDATION FOR REZONING. THE REZONING WITHDREW THE APPLICATION ON JULY 1, 1994 DUE TO THE ZONING BOARD HEARING.
34. 4B B89M - REQUESTED A ZONING CHANGE FROM R-12 TO B-2 FOR 5.2 ACRES OF PARCELS 979 AND 1137 BOTH BEING THE PLANNING BOARD RECOMMENDATION FOR REZONING. THE REZONING WITHDREW THE APPLICATION ON JULY 1, 1994 DUE TO THE ZONING BOARD HEARING.
35. 4B B89M - REQUESTED A ZONING CHANGE FROM R-12 TO B-2 FOR 5.2 ACRES OF PARCELS 979 AND 1137 BOTH BEING THE PLANNING BOARD RECOMMENDATION FOR REZONING. THE REZONING WITHDREW THE APPLICATION ON JULY 1, 1994 DUE TO THE ZONING BOARD HEARING.
36. 4B B89M - REQUESTED A ZONING CHANGE FROM R-12 TO B-2 FOR 5.2 ACRES OF PARCELS 979 AND 1137 BOTH BEING THE PLANNING BOARD RECOMMENDATION FOR REZONING. THE REZONING WITHDREW THE APPLICATION ON JULY 1, 1994 DUE TO THE ZONING BOARD HEARING.
37. 4B B89M - REQUESTED A ZONING CHANGE FROM R-12 TO B-2 FOR 5.2 ACRES OF PARCELS 979 AND 1137 BOTH BEING THE PLANNING BOARD RECOMMENDATION FOR REZONING. THE REZONING WITHDREW THE APPLICATION ON JULY 1, 1994 DUE TO THE ZONING BOARD HEARING.
38. 4B B89M - REQUESTED A ZONING CHANGE FROM R-12 TO B-2 FOR 5.2 ACRES OF PARCELS 979 AND 1137 BOTH BEING THE PLANNING BOARD RECOMMENDATION FOR REZONING. THE REZONING WITHDREW THE APPLICATION ON JULY 1, 1994 DUE TO THE ZONING BOARD HEARING.
39. 4B B89M - REQUESTED A ZONING CHANGE FROM R-12 TO B-2 FOR 5.2 ACRES OF PARCELS 979 AND 1137 BOTH BEING THE PLANNING BOARD RECOMMENDATION FOR REZONING. THE REZONING WITHDREW THE APPLICATION ON JULY 1, 1994 DUE TO THE ZONING BOARD HEARING.
40. 4B B89M - REQUESTED A ZONING CHANGE FROM R-12 TO B-2 FOR 5.2 ACRES OF PARCELS 979 AND 1137 BOTH BEING THE PLANNING BOARD RECOMMENDATION FOR REZONING. THE REZONING WITHDREW THE APPLICATION ON JULY 1, 1994 DUE TO THE ZONING BOARD HEARING.
41. 4B B89M - REQUESTED A ZONING CHANGE FROM R-12 TO B-2 FOR 5.2 ACRES OF PARCELS 979 AND 1137 BOTH BEING THE PLANNING BOARD RECOMMENDATION FOR REZONING. THE REZONING WITHDREW THE APPLICATION ON JULY 1, 1994 DUE TO THE ZONING BOARD HEARING.
42. 4B B89M - REQUESTED A ZONING CHANGE FROM R-12 TO B-2 FOR 5.2 ACRES OF PARCELS 979 AND 1137 BOTH BEING THE PLANNING BOARD RECOMMENDATION FOR REZONING. THE REZONING WITHDREW THE APPLICATION ON JULY 1, 1994 DUE TO THE ZONING BOARD HEARING.
43. 4B B89M - REQUESTED A ZONING CHANGE FROM R-12 TO B-2 FOR 5.2 ACRES OF PARCELS 979 AND 1137 BOTH BEING THE PLANNING BOARD RECOMMENDATION FOR REZONING. THE REZONING WITHDREW THE APPLICATION ON JULY 1, 1994 DUE TO THE ZONING BOARD HEARING.
44. 4B B89M - REQUESTED A ZONING CHANGE FROM R-12 TO B-2 FOR 5.2 ACRES OF PARCELS 979 AND 1137 BOTH BEING THE PLANNING BOARD RECOMMENDATION FOR REZONING. THE REZONING WITHDREW THE APPLICATION ON JULY 1, 1994 DUE TO THE ZONING BOARD HEARING.
45. 4B B89M - REQUESTED A ZONING CHANGE FROM R-12 TO B-2 FOR 5.2 ACRES OF PARCELS 979 AND 1137 BOTH BEING THE PLANNING BOARD RECOMMENDATION FOR REZONING. THE REZONING WITHDREW THE APPLICATION ON JULY 1, 1994 DUE TO THE ZONING BOARD HEARING.
46. 4B B89M - REQUESTED A ZONING CHANGE FROM R-12 TO B-2 FOR 5.2 ACRES OF PARCELS 979 AND 1137 BOTH BEING THE PLANNING BOARD RECOMMENDATION FOR REZONING. THE REZONING WITHDREW THE APPLICATION ON JULY 1, 1994 DUE TO THE ZONING BOARD HEARING.
47. 4B B89M - REQUESTED A ZONING CHANGE FROM R-12 TO B-2 FOR 5.2 ACRES OF PARCELS 979 AND 1137 BOTH BEING THE PLANNING BOARD RECOMMENDATION FOR REZONING. THE REZONING WITHDREW THE APPLICATION ON JULY 1, 1994 DUE TO THE ZONING BOARD HEARING.
48. 4B B89M - REQUESTED A ZONING CHANGE FROM R-12 TO B-2 FOR 5.2 ACRES OF PARCELS 979 AND 1137 BOTH BEING THE PLANNING BOARD RECOMMENDATION FOR REZONING. THE REZONING WITHDREW THE APPLICATION ON JULY 1, 1994 DUE TO THE ZONING BOARD HEARING.
49. 4B B89M - REQUESTED A ZONING CHANGE FROM R-12 TO B-2 FOR 5.2 ACRES OF PARCELS 979 AND 1137 BOTH BEING THE PLANNING BOARD RECOMMENDATION FOR REZONING. THE REZONING WITHDREW THE APPLICATION ON JULY 1, 1994 DUE TO THE ZONING BOARD HEARING.
50. 4B B89M - REQUESTED A ZONING CHANGE FROM R-12 TO B-2 FOR 5.2 ACRES OF PARCELS 979 AND 1137 BOTH BEING THE PLANNING BOARD RECOMMENDATION FOR REZONING. THE REZONING WITHDREW THE APPLICATION ON JULY 1, 1994 DUE TO THE ZONING BOARD HEARING.
51. 4B B89M - REQUESTED A ZONING CHANGE FROM R-12 TO B-2 FOR 5.2 ACRES OF PARCELS 979 AND 1137 BOTH BEING THE PLANNING BOARD RECOMMENDATION FOR REZONING. THE REZONING WITHDREW THE APPLICATION ON JULY 1, 1994 DUE TO THE ZONING BOARD HEARING.
52. 4B B89M - REQUESTED A ZONING CHANGE FROM R-12 TO B-2 FOR 5.2 ACRES OF PARCELS 979 AND 1137 BOTH BEING THE PLANNING BOARD RECOMMENDATION FOR REZONING. THE REZONING WITHDREW THE APPLICATION ON JULY 1, 1994 DUE TO THE ZONING BOARD HEARING.
53. 4B B89M - REQUESTED A ZONING CHANGE FROM R-12 TO B-2 FOR 5.2 ACRES OF PARCELS 979 AND 1137 BOTH BEING THE PLANNING BOARD RECOMMENDATION FOR REZONING. THE REZONING WITHDREW THE APPLICATION ON JULY 1, 1994 DUE TO THE ZONING BOARD HEARING.
54. 4B B89M - REQUESTED A ZONING CHANGE FROM R-12 TO B-2 FOR 5.2 ACRES OF PARCELS 979 AND 1137 BOTH BEING THE PLANNING BOARD RECOMMENDATION FOR REZONING. THE REZONING WITHDREW THE APPLICATION ON JULY 1, 1994 DUE TO THE ZONING BOARD HEARING.
55. 4B B89M - REQUESTED A ZONING CHANGE FROM R-12 TO B-2 FOR 5.2 ACRES OF PARCELS 979 AND 1137 BOTH BEING THE PLANNING BOARD RECOMMENDATION FOR REZONING. THE REZONING WITHDREW THE APPLICATION ON JULY 1, 1994 DUE TO THE ZONING BOARD HEARING.
56. 4B B89M - REQUESTED A ZONING CHANGE FROM R-12 TO B-2 FOR 5.2 ACRES OF PARCELS 979 AND 1137 BOTH BEING THE PLANNING BOARD RECOMMENDATION FOR REZONING. THE REZONING WITHDREW THE APPLICATION ON JULY 1, 1994 DUE TO THE ZONING BOARD HEARING.
57. 4B B89M - REQUESTED A ZONING CHANGE FROM R-12 TO B-2 FOR 5.2 ACRES OF PARCELS 979 AND 1137 BOTH BEING THE PLANNING BOARD RECOMMENDATION FOR REZONING. THE REZONING WITHDREW THE APPLICATION ON JULY 1, 1994 DUE TO THE ZONING BOARD HEARING.
58. 4B B89M - REQUESTED A ZONING CHANGE FROM R-12 TO B-2 FOR 5.2 ACRES OF PARCELS 979 AND 1137 BOTH BEING THE PLANNING BOARD RECOMMENDATION FOR REZONING. THE REZONING WITHDREW THE APPLICATION ON JULY 1, 1994 DUE TO THE ZONING BOARD HEARING.
59. 4B B89M - REQUESTED A ZONING CHANGE FROM R-12 TO B-2 FOR 5.2 ACRES OF PARCELS 979 AND 1137 BOTH BEING THE PLANNING BOARD RECOMMENDATION FOR REZONING. THE REZONING WITHDREW THE APPLICATION ON JULY 1, 1994 DUE TO THE ZONING BOARD HEARING.
60. 4B B89M - REQUESTED A ZONING CHANGE FROM R-12 TO B-2 FOR 5.2 ACRES OF PARCELS 979 AND 1137 BOTH BEING THE PLANNING BOARD RECOMMENDATION FOR REZONING. THE REZONING WITHDREW THE APPLICATION ON JULY 1, 1994 DUE TO THE ZONING BOARD HEARING.
61. 4B B89M - REQUESTED A ZONING CHANGE FROM R-12 TO B-2 FOR 5.2 ACRES OF PARCELS 979 AND 1137 BOTH BEING THE PLANNING BOARD RECOMMENDATION FOR REZONING. THE REZONING WITHDREW THE APPLICATION ON JULY 1, 1994 DUE TO THE ZONING BOARD HEARING.
62. 4B B89M - REQUESTED A ZONING CHANGE FROM R-12 TO B-2 FOR 5.2 ACRES OF PARCELS 979 AND 1137 BOTH BEING THE PLANNING BOARD RECOMMENDATION FOR REZONING. THE REZONING WITHDREW THE APPLICATION ON JULY 1, 1994 DUE TO THE ZONING BOARD HEARING.
63. 4B B89M - REQUESTED A ZONING CHANGE FROM R-12 TO B-2 FOR 5.2 ACRES OF PARCELS 979 AND 1137 BOTH BEING THE PLANNING BOARD RECOMMENDATION FOR REZONING. THE REZONING WITHDREW THE APPLICATION ON JULY 1, 1994 DUE TO THE ZONING BOARD HEARING.
64. 4B B89M - REQUESTED A ZONING CHANGE FROM R-12 TO B-2 FOR 5.2 ACRES OF PARCELS 979 AND 1137 BOTH BEING THE PLANNING BOARD RECOMMENDATION FOR REZONING. THE REZONING WITHDREW THE APPLICATION ON JULY 1, 1994 DUE TO THE ZONING BOARD HEARING.
65. 4B B89M - REQUESTED A ZONING CHANGE FROM R-12 TO B-2 FOR 5.2 ACRES OF PARCELS 979 AND 1137 BOTH BEING THE PLANNING BOARD RECOMMENDATION FOR REZONING. THE REZONING WITHDREW THE APPLICATION ON JULY 1, 1994 DUE TO THE ZONING BOARD HEARING.
66. 4B B89M - REQUESTED A ZONING CHANGE FROM R-12 TO B-2 FOR 5.2 ACRES OF PARCELS 979 AND 1137 BOTH BEING THE PLANNING BOARD RECOMMENDATION FOR REZONING. THE REZONING WITHDREW THE APPLICATION ON JULY 1, 1994 DUE TO THE ZONING BOARD HEARING.
67. 4B B89M - REQUESTED A ZONING CHANGE FROM R-12 TO B-2 FOR 5.2 ACRES OF PARCELS 979 AND 1137 BOTH BEING THE PLANNING BOARD RECOMMENDATION FOR REZONING. THE REZONING WITHDREW THE APPLICATION ON JULY 1, 1994 DUE TO THE ZONING BOARD HEARING.
68. 4B B89M - REQUESTED A ZONING CHANGE FROM R-12 TO B-2 FOR 5.2 ACRES OF PARCELS 979 AND 1137 BOTH BEING THE PLANNING BOARD RECOMMENDATION FOR REZONING. THE REZONING WITHDREW THE APPLICATION ON JULY 1, 1994 DUE TO THE ZONING BOARD HEARING.
69. 4B B89M - REQUESTED A ZONING CHANGE FROM R-12 TO B-2 FOR 5.2 ACRES OF PARCELS 979 AND 1137 BOTH BEING THE PLANNING BOARD RECOMMENDATION FOR REZONING. THE REZONING WITHDREW THE APPLICATION ON JULY 1, 1994 DUE TO THE ZONING BOARD HEARING.
70. 4B B89M - REQUESTED A ZONING CHANGE FROM R-12 TO B-2 FOR 5.2 ACRES OF PARCELS 979 AND 1137 BOTH BEING THE PLANNING BOARD RECOMMENDATION FOR REZONING. THE REZONING WITHDREW THE APPLICATION ON JULY 1, 1994 DUE TO THE ZONING BOARD HEARING.
71. 4B B89M - REQUESTED A ZONING CHANGE FROM R-12 TO B-2 FOR 5.2 ACRES OF PARCELS 979 AND 1137 BOTH BEING THE PLANNING BOARD RECOMMENDATION FOR REZONING. THE REZONING WITHDREW THE APPLICATION ON JULY 1, 1994 DUE TO THE ZONING BOARD HEARING.
72. 4B B89M - REQUESTED A ZONING CHANGE FROM R-12 TO B-2 FOR 5.2 ACRES OF PARCELS 979 AND 1137 BOTH BEING THE PLANNING BOARD RECOMMENDATION FOR REZONING. THE REZONING WITHDREW THE APPLICATION ON JULY 1, 1994 DUE TO THE ZONING BOARD HEARING.
73. 4B B89M - REQUESTED A ZONING CHANGE FROM R-12 TO B-2 FOR 5.2 ACRES OF PARCELS 979 AND 1137 BOTH BEING THE PLANNING BOARD RECOMMENDATION FOR REZONING. THE REZONING WITHDREW THE APPLICATION ON JULY 1, 1994 DUE TO THE ZONING BOARD HEARING.
74. 4B B89M - REQUESTED A ZONING CHANGE FROM R-12 TO B-2 FOR 5.2 ACRES OF PARCELS 979 AND 1137 BOTH BEING THE PLANNING BOARD RECOMMENDATION FOR REZONING. THE REZONING WITHDREW THE APPLICATION ON JULY 1, 1994 DUE TO THE ZONING BOARD HEARING.
75. 4B B89M - REQUESTED A ZONING CHANGE FROM R-12 TO B-2 FOR 5.2 ACRES OF PARCELS 979 AND 1137 BOTH BEING THE PLANNING BOARD RECOMMENDATION FOR REZONING. THE REZONING WITHDREW THE APPLICATION ON JULY 1, 1994 DUE TO THE ZONING BOARD HEARING.
76. 4B B89M - REQUESTED A ZONING CHANGE FROM R-12 TO B-2 FOR 5.2 ACRES OF PARCELS 979 AND 1137 BOTH BEING THE PLANNING BOARD RECOMMENDATION FOR REZONING. THE REZONING WITHDREW THE APPLICATION ON JULY 1, 1994 DUE TO THE ZONING BOARD HEARING.
77. 4B B89M - REQUESTED A ZONING CHANGE FROM R-12 TO B-2 FOR 5.2 ACRES OF PARCELS 979 AND 1137 BOTH BEING THE PLANNING BOARD RECOMMENDATION FOR REZONING. THE REZONING WITHDREW THE APPLICATION ON JULY 1, 1994 DUE TO THE ZONING BOARD HEARING.
78. 4B B89M - REQUESTED A ZONING CHANGE FROM R-12 TO B-2 FOR 5.2 ACRES OF PARCELS 979 AND 1137 BOTH BEING THE PLANNING BOARD RECOMMENDATION FOR REZONING. THE REZONING WITHDREW THE APPLICATION ON JULY 1, 1994 DUE TO THE ZONING BOARD HEARING.
79. 4B B89M - REQUESTED A ZONING CHANGE FROM R-12 TO B-2 FOR 5.2 ACRES OF PARCELS 979 AND 1137 BOTH BEING THE PLANNING BOARD RECOMMENDATION FOR REZONING. THE REZONING WITHDREW THE APPLICATION ON JULY 1, 1994 DUE TO THE ZONING BOARD HEARING.
80. 4B B89M - REQUESTED A ZONING CHANGE FROM R-12 TO B-2 FOR 5.2 ACRES OF PARCELS 979 AND 1137 BOTH BEING THE PLANNING BOARD RECOMMENDATION FOR REZONING. THE REZONING WITHDREW THE APPLICATION ON JULY 1, 1994 DUE TO THE ZONING BOARD HEARING.
81. 4B B89M - REQUESTED A ZONING CHANGE FROM R-12 TO B-2 FOR 5.2 ACRES OF PARCELS 979 AND 1137 BOTH BEING THE PLANNING BOARD RECOMMENDATION FOR REZONING. THE REZONING WITHDREW THE APPLICATION ON JULY 1, 1994 DUE TO THE ZONING BOARD HEARING.
82. 4B B89M - REQUESTED A ZONING CHANGE FROM R-12 TO B-2 FOR 5.2 ACRES OF PARCELS 979 AND 1137 BOTH BEING THE PLANNING BOARD RECOMMENDATION FOR REZONING. THE REZONING WITHDREW THE APPLICATION ON JULY 1, 1994 DUE TO THE ZONING BOARD HEARING.
83. 4B B89M - REQUESTED A ZONING CHANGE FROM R-12 TO B-2 FOR 5.2 ACRES OF PARCELS 979 AND 1137 BOTH BEING THE PLANNING BOARD RECOMMENDATION FOR REZONING. THE REZONING WITHDREW THE APPLICATION ON JULY 1, 1994 DUE TO THE ZONING BOARD HEARING.
84. 4B B89M - REQUESTED A ZONING CHANGE FROM R-12 TO B-2 FOR 5.2 ACRES OF PARCELS 979 AND 1137 BOTH BEING THE PLANNING BOARD RECOMMENDATION FOR REZONING. THE REZONING WITHDREW THE APPLICATION ON JULY 1, 1994 DUE TO THE ZONING BOARD HEARING.
85. 4B B89M - REQUESTED A ZONING CHANGE FROM R-12 TO B-2 FOR 5.2 ACRES OF PARCELS 979 AND 1137 BOTH BEING THE PLANNING BOARD RECOMMENDATION FOR REZONING. THE REZONING WITHDREW THE APPLICATION ON JULY 1, 1994 DUE TO THE ZONING BOARD HEARING.
86. 4B B89M - REQUESTED A ZONING CHANGE FROM R-12 TO B-2 FOR 5.2 ACRES OF PARCELS 979 AND 1137 BOTH BEING THE PLANNING BOARD RECOMMENDATION FOR REZONING. THE REZONING WITHDREW THE APPLICATION ON JULY 1, 1994 DUE TO THE ZONING BOARD HEARING.
87. 4B B89M - REQUESTED A ZONING CHANGE FROM R-12 TO B-2 FOR 5.2 ACRES OF PARCELS 979 AND 1137 BOTH BEING THE PLANNING BOARD RECOMMENDATION FOR REZONING. THE REZONING WITHDREW THE APPLICATION ON JULY 1, 1994 DUE TO THE ZONING BOARD HEARING.
88. 4B B89M - REQUESTED A ZONING CHANGE FROM R-12 TO B-2 FOR 5.2 ACRES OF PARCELS 979 AND 1137 BOTH BEING THE PLANNING BOARD RECOMMENDATION FOR REZONING. THE REZONING WITHDREW THE APPLICATION ON JULY 1, 1994 DUE TO THE ZONING BOARD HEARING.
89. 4B B89M - REQUESTED A ZONING CHANGE FROM R-12 TO B-2 FOR 5.2 ACRES OF PARCELS 979 AND 1137 BOTH BEING THE PLANNING BOARD RECOMMENDATION FOR REZONING. THE REZONING WITHDREW THE APPLICATION ON JULY 1, 1994 DUE TO THE ZONING BOARD HEARING.
90. 4B B89M - REQUESTED A ZONING CHANGE FROM R-12 TO B-2 FOR 5.2 ACRES OF PARCELS 979 AND 1137 BOTH BEING THE PLANNING BOARD RECOMMENDATION FOR REZONING. THE REZONING WITHDREW THE APPLICATION ON JULY 1, 1994 DUE TO THE ZONING BOARD HEARING.
91. 4B B89M - REQUESTED A ZONING CHANGE FROM R-12 TO B-2 FOR 5.2 ACRES OF PARCELS 979 AND 1137 BOTH BEING THE PLANNING BOARD RECOMMENDATION FOR REZONING. THE REZONING WITHDREW THE APPLICATION ON JULY 1, 1994 DUE TO THE ZONING BOARD HEARING.
92. 4B B89M - REQUESTED A ZONING CHANGE FROM R-12 TO B-2 FOR 5.2 ACRES OF PARCELS 979 AND 1137 BOTH BEING THE PLANNING BOARD RECOMMENDATION FOR REZONING. THE REZONING WITHDREW THE APPLICATION ON JULY 1, 1994 DUE TO THE ZONING BOARD HEARING.
93. 4B B89M - REQUESTED A ZONING CHANGE FROM R-12 TO B-2 FOR 5.2 ACRES OF PARCELS 979 AND 1137 BOTH BEING THE PLANNING BOARD RECOMMENDATION FOR REZONING. THE REZONING WITHDREW THE APPLICATION ON JULY 1, 1994 DUE TO THE ZONING BOARD HEARING.
94. 4B B89M - REQUESTED A ZONING CHANGE FROM R-12 TO B-2 FOR 5.2 ACRES OF PARCELS 979 AND 1137 BOTH BEING THE PLANNING BOARD RECOMMENDATION FOR REZONING. THE REZONING WITHDREW THE APPLICATION ON JULY 1, 1994 DUE TO THE ZONING BOARD HEARING.
95. 4B B89M - REQUESTED A ZONING CHANGE FROM R-12 TO B-2 FOR 5.2 ACRES OF PARCELS 979 AND 1137 BOTH BEING THE PLANNING BOARD RECOMMENDATION FOR REZONING. THE REZONING WITHDREW THE APPLICATION ON JULY 1, 1994 DUE TO THE ZONING BOARD HEARING.
96. 4B B89M - REQUESTED A ZONING CHANGE FROM R-12 TO B-2 FOR 5.2 ACRES OF PARCELS 979 AND 1137 BOTH BEING THE PLANNING BOARD RECOMMENDATION FOR REZONING. THE REZONING WITHDREW THE APPLICATION ON JULY 1, 1994 DUE TO THE ZONING BOARD HEARING.
97. 4B B89M - REQUESTED A ZONING CHANGE FROM R-12 TO B-2 FOR 5.2 ACRES OF PARCELS 979 AND 1137 BOTH BEING THE PLANNING BOARD RECOMMENDATION FOR REZONING. THE REZONING WITHDREW THE APPLICATION ON JULY 1, 1994 DUE TO THE ZONING BOARD HEARING.
98. 4B B89M - REQUESTED A ZONING CHANGE FROM R-12 TO B-2 FOR 5.2 ACRES OF PARCELS 979 AND 1137 BOTH BEING THE PLANNING BOARD RECOMMENDATION FOR REZONING. THE REZONING WITHDREW THE APPLICATION ON JULY 1, 1994 DUE TO THE ZONING BOARD HEARING.
99. 4B B89M - REQUESTED A ZONING CHANGE FROM R-12 TO B-2 FOR 5.2 ACRES OF PARCELS 979 AND 1137 BOTH BEING THE PLANNING BOARD RECOMMENDATION FOR REZONING. THE REZONING WITHDREW THE APPLICATION ON JULY 1, 1994 DUE TO THE ZONING BOARD HEARING.
100. 4B B89M - REQUESTED A ZONING CHANGE FROM R-12 TO B-2 FOR 5.2 ACRES OF PARCELS 979 AND 1137 BOTH BEING THE PLANNING BOARD RECOMMENDATION FOR REZONING. THE REZONING WITHDREW THE APPLICATION ON JULY 1, 1994 DUE TO THE ZONING BOARD HEARING.



PLAN
SCALE: 1" = 100'

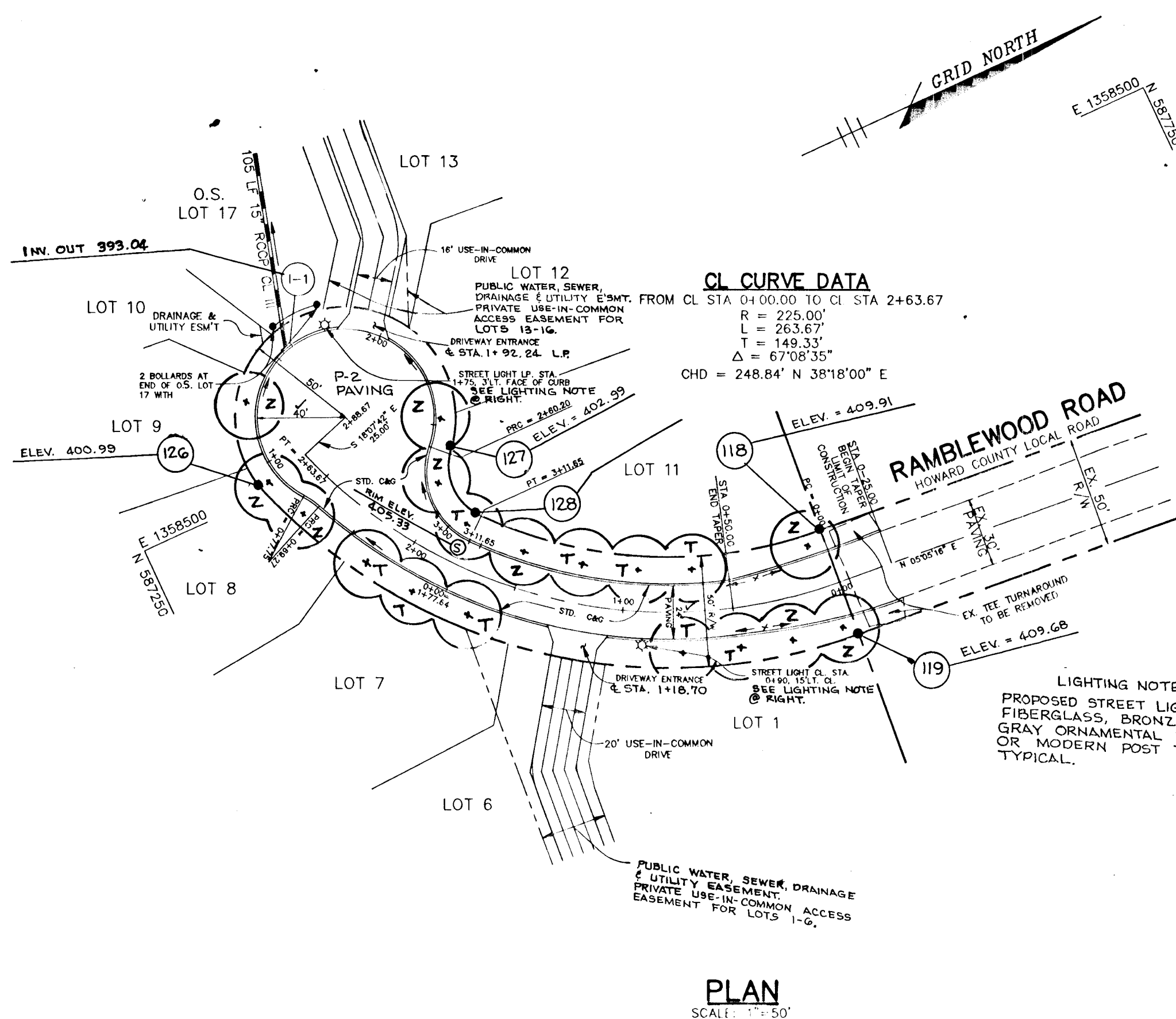
AS BUILT CERTIFICATE							
<i>J. Farell</i> JAYKANT D. FAREKH PE # 1914B	12.8.97 DATE						
APPROVED: HOWARD COUNTY DEPARTMENT OF PLANNING AND ZONING.							
<i>Jim Zimmerman</i> CHIEF, DIVISION OF LAND DEVELOPMENT AND RESEARCH	3/28/95 DATE						
APPROVED: HOWARD COUNTY DEPARTMENT OF PUBLIC WORKS.							
<i>Charles M. Sheehan</i> CHIEF, LAND DEVELOPMENT DIVISION	3/28/95 DATE						
<i>Andrew M. Ducker</i> CHIEF, BUREAU OF HIGHWAYS	3-17-95 DATE						
<i>Paul J. Gorman</i> CHIEF, BUREAU OF ENGINEERING	3/23/95 DATE						
<table border="1" style="width: 100%; border-collapse: collapse;"> <thead> <tr> <th>DATE</th> <th>NO.</th> <th>REVISION</th> </tr> </thead> <tbody> <tr> <td>OWNERS</td> <td>MICHAEL J. LYNCH 9410 HAIT, NATIONAL PIKE ELLICOTT CITY, MD 21043 410-461-5188</td> <td>DEVELOPER SARGENT DEVELOPMENT CORP. 13243 WESTMEATH LANE CLARKSVILLE, MD 21029 301-854-0938</td> </tr> </tbody> </table>		DATE	NO.	REVISION	OWNERS	MICHAEL J. LYNCH 9410 HAIT, NATIONAL PIKE ELLICOTT CITY, MD 21043 410-461-5188	DEVELOPER SARGENT DEVELOPMENT CORP. 13243 WESTMEATH LANE CLARKSVILLE, MD 21029 301-854-0938
DATE	NO.	REVISION					
OWNERS	MICHAEL J. LYNCH 9410 HAIT, NATIONAL PIKE ELLICOTT CITY, MD 21043 410-461-5188	DEVELOPER SARGENT DEVELOPMENT CORP. 13243 WESTMEATH LANE CLARKSVILLE, MD 21029 301-854-0938					
PROJECT: CHATHAM MEWS LOTS 1-17							
AREA: TAX MAP NO. 24 ZONED R-12 & B-2 PARCELS 979 & 1137 2nd ELECTION DISTRICT HOWARD COUNTY, MARYLAND CHATHAM MEWS, A RESUBDIVISION OF PARCEL B & LOT 1							
TITLE: TITLE SHEET							
RIEMER MUEGGE & ASSOCIATES, INC. Planners Engineers Surveyors 8818 Centre Park Drive • Suite 200 • Columbia, Md 21045 410-997-8800 FAX: 410-997-9282							
3-1-95 DATE 	DESIGNED BY: JTD DRAWN BY: JTD PROJECT NO: 50011 DATE: FEB. 27, 1995 SCALE: AS SHOWN DRAWING NO. 1 OF 6						

8221



CURVE NO.	RADIUS	TANGENT	LENGTH	Δ	CHD. B & D.
C1	238.89	34.81	89.28	16°44'00"	558'20" W 89.02'
C2	33.00	4.88	8.48	13°52'41"	408'46" W 8.48'
C3	40.00	46.16	182.76	261°48'00"	503'20" W 80.63'
C4	35.00	31.63	91.44	84°2'56"	187'55" W 46.83'
C5	248.89	48.36	97.47	21°54'23"	560'52" W 95.00'
C6	50.00	86.60	206.43	238°59'53"	511'52" W 86.60'
C7	25.00	21.65	35.68	81°47'11"	189'00" W 32.73'

CUL-DE-SAC DETAIL
NOT TO SCALE



PLAN
SCALE: 1" = 50'

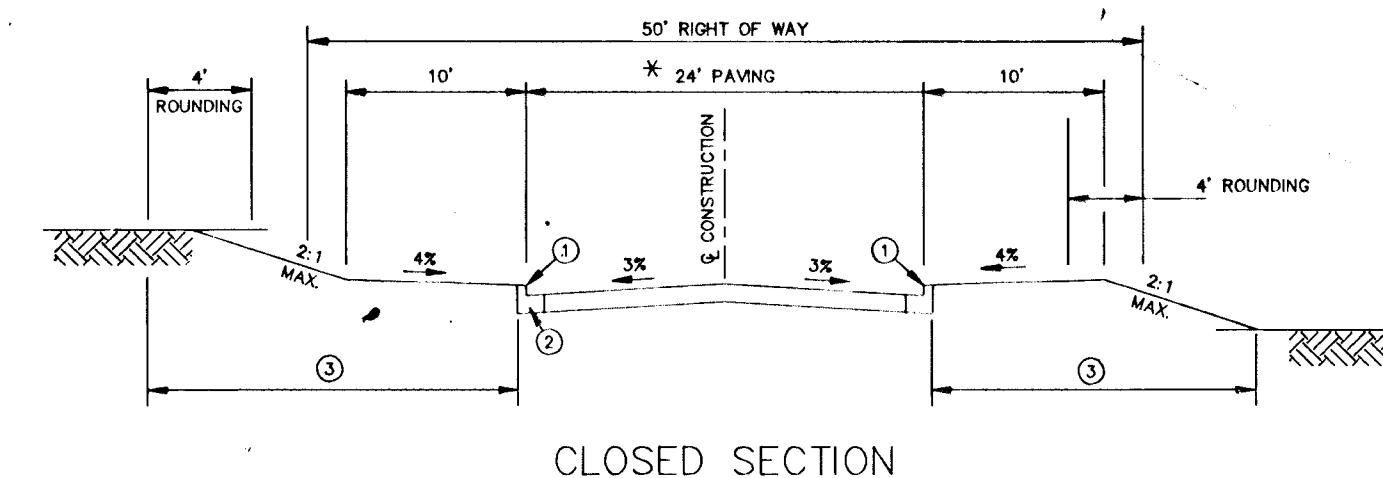
CURB TRANSITION DATA

TAPER RIGHT:
FROM CL STA. 0+25.00
TO CL STA. 0+50.00
R = 552.41'
L = 72.41'
TAN = 36.26°
Δ = 0° 30' 37" E
CHORD = 110.67' 11" E. 72.36'

TAPER LEFT:
FROM CL STA. 0+23.62
TO CL STA. 0+50.00
R = 276.75'
L = 60.30'
TAN = 30.92°
Δ = 12° 35' 14" E
CHORD = 112° 28' 31" E. 76.44'

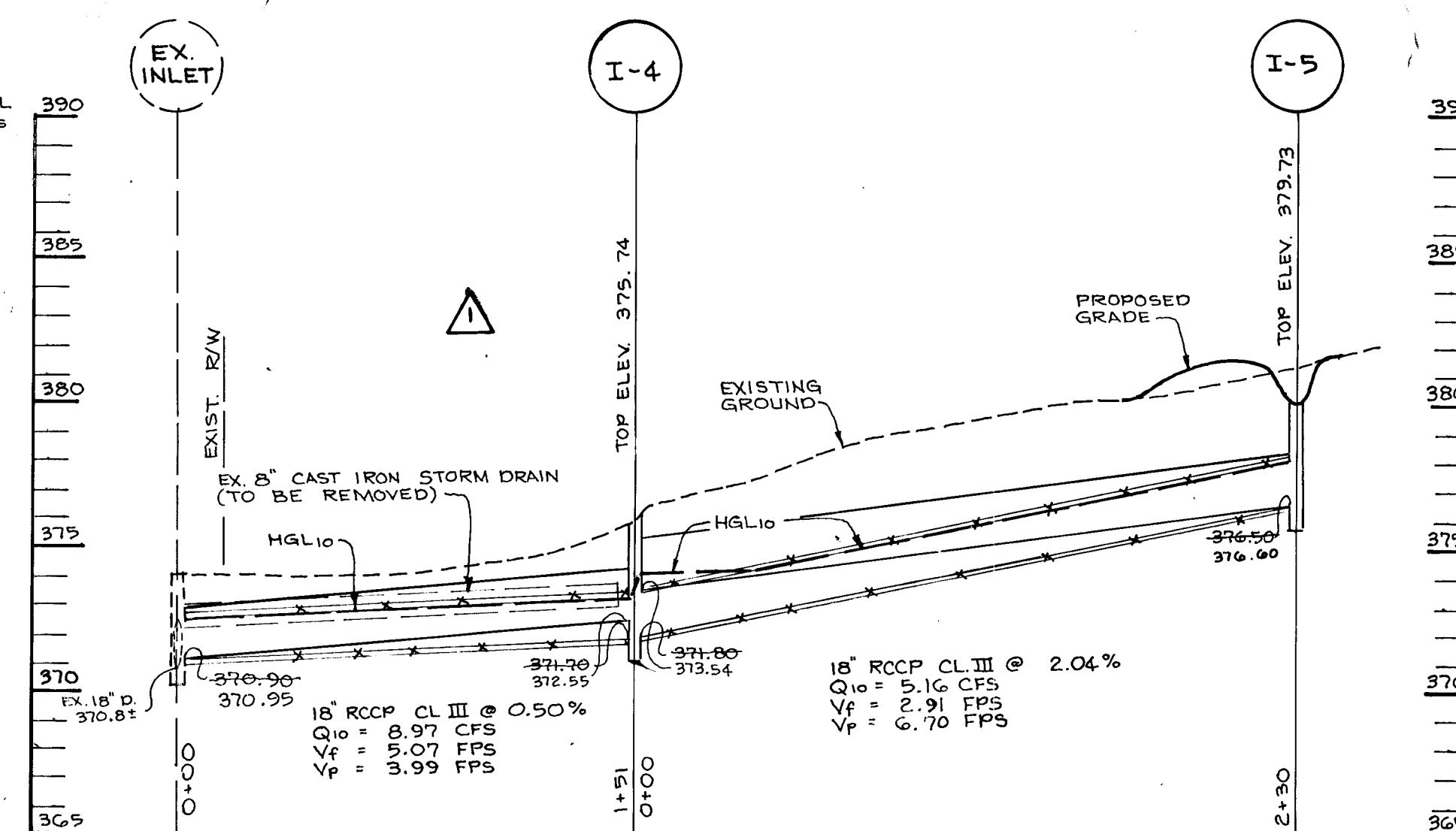
CNTR. PT.
N 587.56214
E 1358.08032

CNTR. PT.
N 587.57537
E 1358.32167

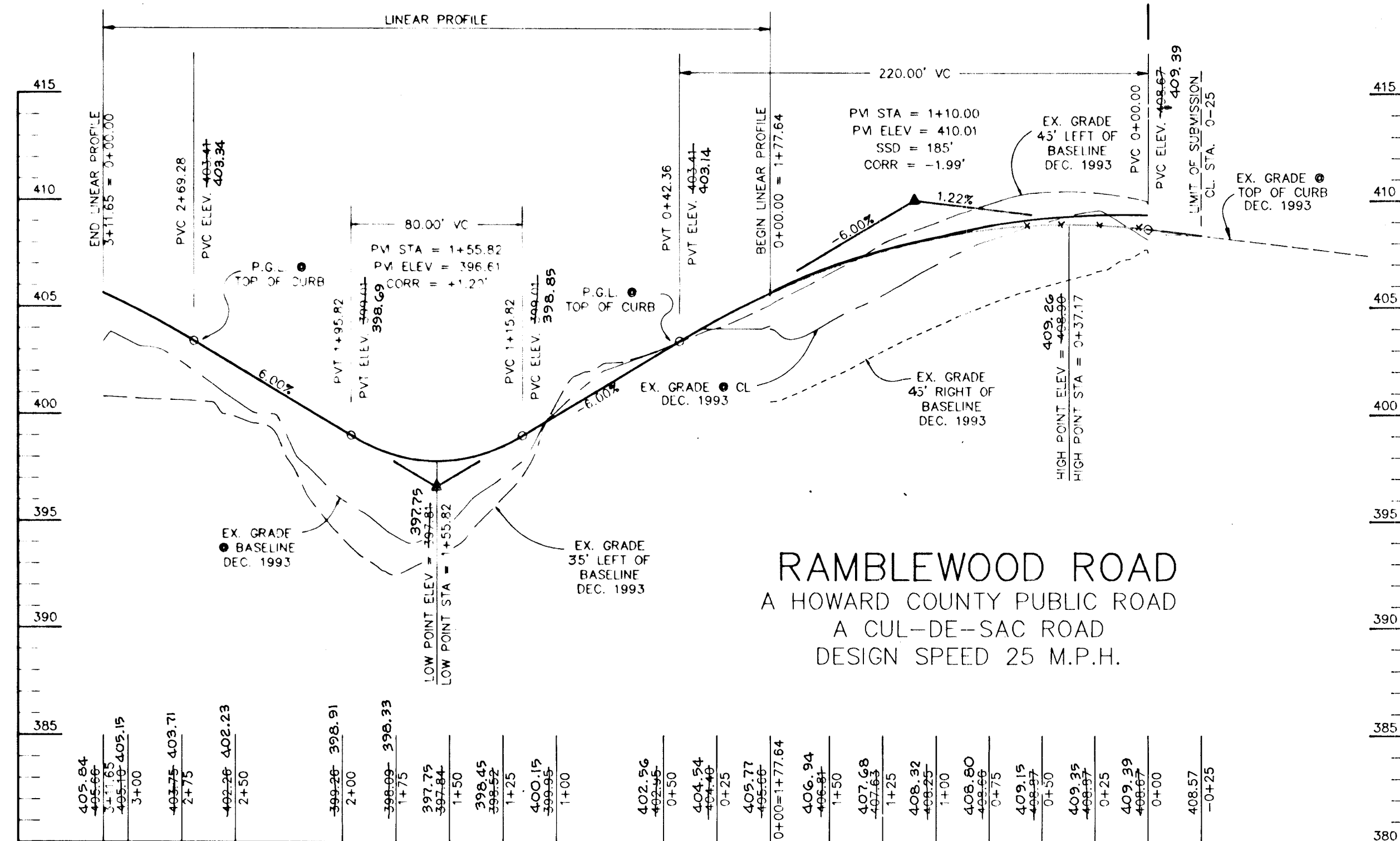


TYPICAL SECTION CUL-DE-SAC
NO SCALE

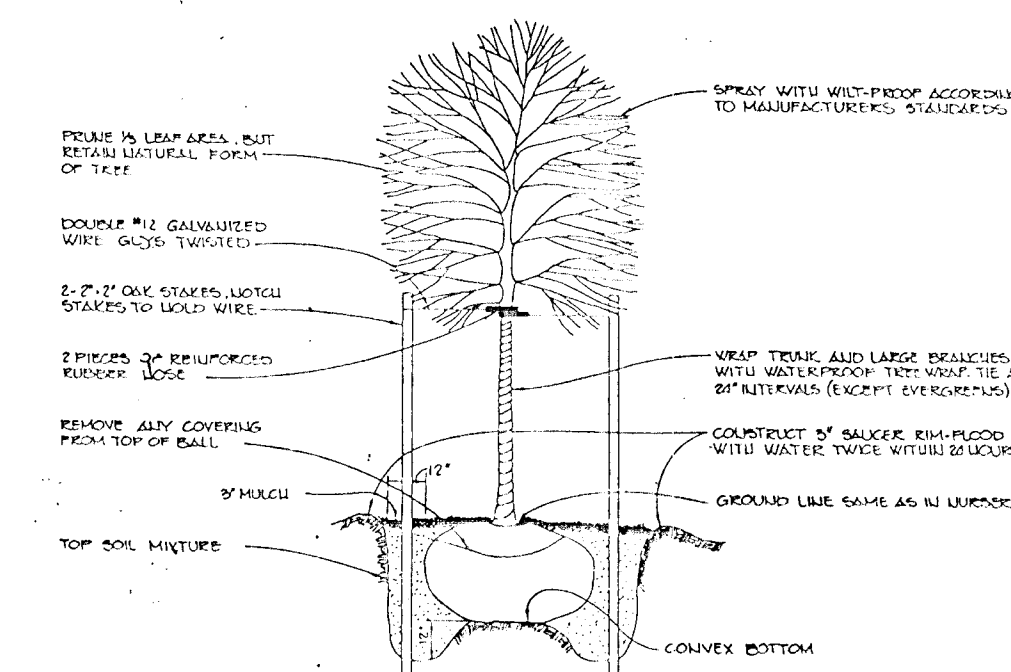
RAMBLEWOOD ROAD FROM CL STA 0+50 TO CL STA 3+16.07
DESIGN SPEED 25 MPH
(PAVEMENT WIDTH VARIES FROM EX. TO 24' BETWEEN STA 0+25 TO 0+50)



STORM DRAIN PROFILE
SCALE: HORIZ. 1" = 50' VERT. 1" = 5'



PROFILE
SCALE: HORIZ. 1" = 50' VERT. 1" = 5'



TREE PLANTING DETAIL N.T.S.

PLANT LIST

KEY	QTY	NAME	SIZE	REMARKS
T	8	TILIA CORDATA 'GREENSPIRE'	2 1/2"-3" CAL. 12'-14' HT.	B & B Full Crown
Z	8	ZELKOVA SERRATA 'VILLAGE GREEN'	2 1/2"-3" CAL. 12'-14' HT.	B & B Full Crown

AS BUILT CERTIFICATE

J. Paehl 12.8.97
JAYKANT D. PAREKH PE #19148 DATE

APPROVED: HOWARD COUNTY DEPARTMENT OF PLANNING AND ZONING.

Gina Stumm 3/28/95
CHIEF, DIVISION OF LAND DEVELOPMENT AND RESEARCH DATE

APPROVED: HOWARD COUNTY DEPARTMENT OF PUBLIC WORKS.

Chris Damm 3/23/95
CHIEF, LAND DEVELOPMENT DIVISION DATE

Andrew M. Sauer 3-17-95
CHIEF, BUREAU OF HIGHWAYS DATE

Paul J. Spon 3/23/95
CHIEF, BUREAU OF ENGINEERING DATE

10/10/96 **ADDED STRM. DRN. PROFILE, EX. INLET TO I-5**

DATE	NO.	REVISION

OWNERS: MICHAEL J. LYNCH, 9430 BALT. NATIONAL PIKE, ELLICOTT CITY, MD 21043, 410-461-5188
DEVELOPER: SARGENT DEVELOPMENT CORP., 111 13243 WESTMEATH LANE, CLARKSVILLE, MD 21029, 301-854-0938

PROJECT: CHATHAM MEWS LOTS 1-17

AREA: TAX MAP NO. 24 PARCELS 979 & 1137
2nd ELECTION DISTRICT HOWARD COUNTY, MARYLAND
CHATHAM MEWS, A RESUBDIVISION OF PARCEL B & LOT 1

TITLE: PLAN & PROFILE OF RAMBLEWOOD DRIVE

RIEMER MUEGGE & ASSOCIATES, INC.
Planners • Engineers • Surveyors
8818 Centre Park Drive • Suite 200 Columbia, MD 21045
410-997-8900 FAX: 410-997-9282

3-1-95 DATE

DESIGNED BY: JTD
DRAWN BY: JTD
PROJECT NO.: 50011
DATE: FEB 27, 1995
SCALE: AS SHOWN
DRAWING NO.: 2 OF 6

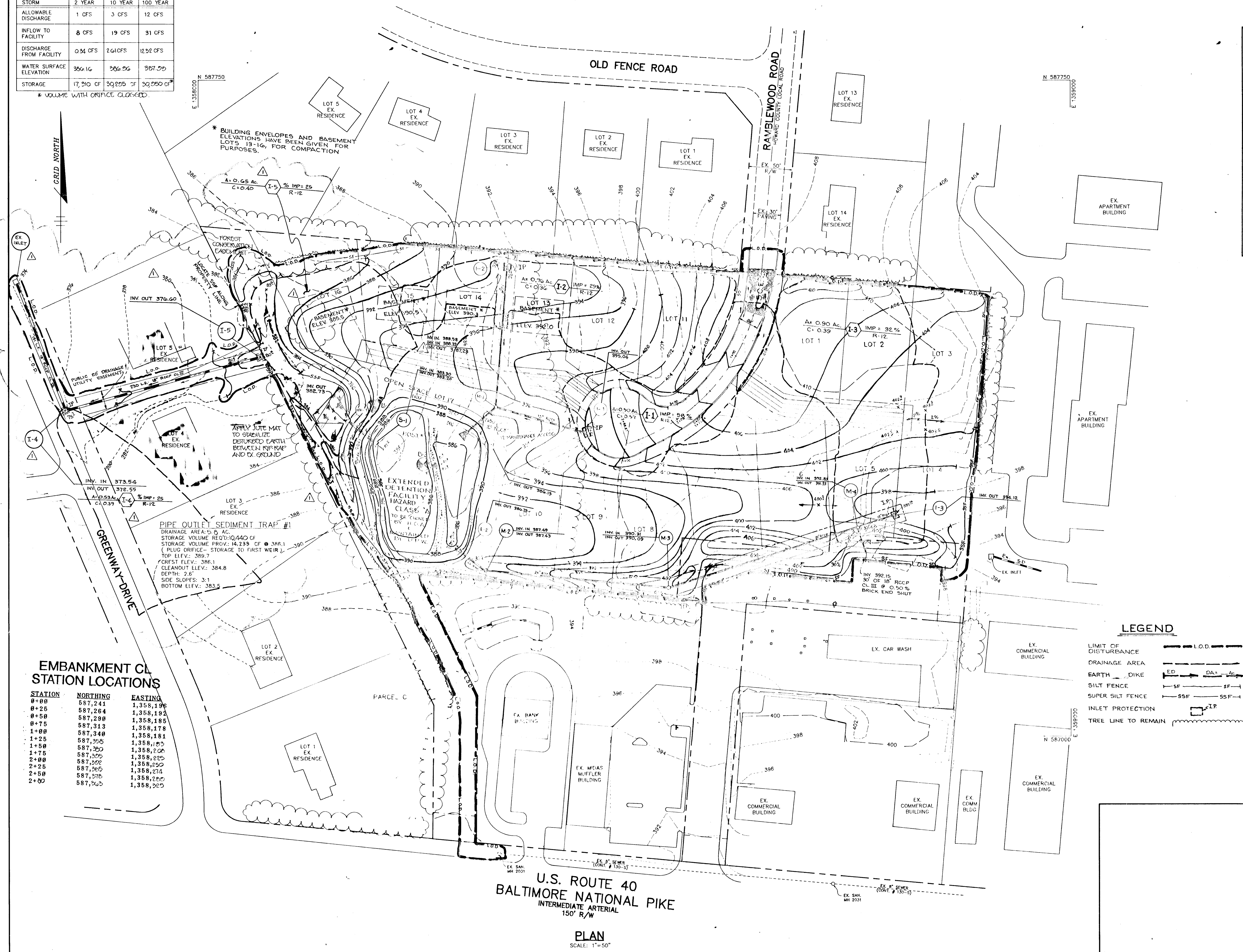
1728

S.W.M.F. # 1 TABULATIONS

STORM	2 YEAR	10 YEAR	100 YEAR
ALLOWABLE DISCHARGE	1 CFS	3 CFS	12 CFS
INFLOW TO FACILITY	8 CFS	19 CFS	31 CFS
DISCHARGE FROM FACILITY	0.34 CFS	2.61 CFS	12.32 CFS
WATER SURFACE ELEVATION	386.16	386.56	387.00
STORAGE	17,310 CF	59,205 CF	30,050 CF

* VOLUME WITH ORIFICE CLOSED

1728



EMBANKMENT CROSS SECTION STATION LOCATIONS

STATION	NORTHING	EASTING
0+00	587,241	1,358,188
0+25	587,264	1,358,192
0+50	587,290	1,358,185
0+75	587,313	1,358,178
1+00	587,340	1,358,181
1+25	587,368	1,358,180
1+50	587,390	1,358,200
1+75	587,390	1,358,220
2+00	587,390	1,358,250
2+25	587,365	1,358,274
2+50	587,376	1,358,280
2+80	587,360	1,358,300

PIPE OUTLET SEDIMENT TRAP #1
 DRAINAGE AREA: 0.4 AC
 STORAGE VOLUME REQUIRED: 10,440 CF
 STORAGE VOLUME PROVIDED: 14,233 CF @ 386.1
 (PLUG ORIFICE - STORAGE TO FIRST WEIR)
 TOP ELEV.: 389.7
 CREST ELEV.: 386.1
 CLEANOUT ELEV.: 384.8
 DEPTH: 2.6'
 SIDE SLOPES: 3:1
 BOTTOM ELEV.: 383.5

LEGEND

- LIMIT OF DISTURBANCE: --- L.O.D. ---
- DRAINAGE AREA: --- DA ---
- EARTH DIKE: --- ED ---
- SILT FENCE: --- SF ---
- SUPER SILT FENCE: --- SSF ---
- INLET PROTECTION: --- IP ---
- TREE LINE TO REMAIN: --- (Symbol) ---

U.S. ROUTE 40
 BALTIMORE NATIONAL PIKE
 INTERMEDIATE ARTERIAL
 150' R/W
PLAN
 SCALE: 1"=50'

BY THE DEVELOPER:
 I/WE CERTIFY THAT ALL DEVELOPMENT AND/OR CONSTRUCTION WILL BE DONE ACCORDING TO THESE PLANS, AND THAT ANY RESPONSIBLE PERSONNEL INVOLVED IN THE CONSTRUCTION PROJECT WILL HAVE A CERTIFICATE OF ATTENDANCE AT A DEPARTMENT OF THE ENVIRONMENT APPROVED TRAINING PROGRAM FOR THE CONTROL OF SEDIMENT AND EROSION BEFORE BEGINNING THE PROJECT. I SHALL ENGAGE A REGISTERED PROFESSIONAL ENGINEER TO SUPERVISE POND CONSTRUCTION AND PROVIDE THE HOWARD SOIL CONSERVATION DISTRICT WITH AN "AS-BUILT" PLAN OF THE POND WITHIN 30 DAYS OF COMPLETION. I ALSO AUTHORIZE PERIODIC ON-SITE INSPECTIONS BY THE HOWARD SOIL CONSERVATION DISTRICT.

Lawrie B. Sargent
 DEVELOPER **Lawrie B. Sargent** DATE **3-1-95**
 PRINT NAME BELOW SIGNATURE

BY THE ENGINEER:
 I CERTIFY THAT THIS PLAN FOR POND CONSTRUCTION, EROSION AND SEDIMENT CONTROL REPRESENTS A PRACTICAL AND WORKABLE PLAN BASED ON MY PERSONAL KNOWLEDGE OF THE SITE CONDITIONS. THIS PLAN WAS PREPARED IN ACCORDANCE WITH THE REQUIREMENTS OF THE HOWARD SOIL CONSERVATION DISTRICT. I HAVE NOTIFIED THE DEVELOPER THAT HE/SHE MUST ENGAGE A REGISTERED PROFESSIONAL ENGINEER TO SUPERVISE POND CONSTRUCTION AND PROVIDE THE HOWARD SOIL CONSERVATION DISTRICT WITH AN "AS-BUILT" PLAN OF THE POND WITHIN 30 DAYS OF COMPLETION.

Max Kantzer
 ENGINEER **Max Kantzer** DATE **3-1-95**
 PRINT NAME BELOW SIGNATURE

THESE PLANS HAVE BEEN REVIEWED FOR THE HOWARD SOIL CONSERVATION DISTRICT AND MEET THE TECHNICAL REQUIREMENTS FOR SMALL POND CONSTRUCTION, SOIL EROSION AND SEDIMENT CONTROL.

Johnnie
 U.S. NATURAL RESOURCES CONSERVATION DISTRICT DATE **3/1/95**

THESE PLANS FOR SMALL POND CONSTRUCTION, SOIL EROSION AND SEDIMENT CONTROL MEET THE REQUIREMENTS OF THE HOWARD SOIL CONSERVATION DISTRICT.

Richard Zick
 HOWARD SOIL CONSERVATION DISTRICT DATE **3/1/95**

AS BUILT CERTIFICATE

J. Parekh
 JAYKANT D. PAREKH RE # 19148 DATE **12-8-77**

APPROVED: HOWARD COUNTY DEPARTMENT OF PLANNING AND ZONING.

Gina Summons
 CHIEF, DIVISION OF LAND DEVELOPMENT AND RESEARCH DATE **3/28/95**

APPROVED: HOWARD COUNTY DEPARTMENT OF PUBLIC WORKS.

Chris Deanne
 CHIEF, LAND DEVELOPMENT DIVISION DATE **2/23/95**

Andrew M. Sauer
 CHIEF, BUREAU OF HIGHWAYS DATE **3-17-95**

Richard Zick
 CHIEF, BUREAU OF ENGINEERING DATE **3/23/95**

10/10/96 DATE NO. REVISION

OWNERS: MICHAEL J. LYNCH 9430 BALT. NATIONAL PIKE, LLLIWOOD CITY, MD 21043, 410-461-3168; CHARLES SHEEHAN 1002 INGLESHAM AVE, CATOWVILLE, MD 21228; SARGENT DEVELOPMENT CORP. III 13243 WESTMEATH LANE, CLARKSVILLE, MD 21029, 301-854-9838

PROJECT: **CHATHAM MEWS**
 LOTS 1-17

AREA TAX MAP NO. 24 ZONED R-12 & B-2
 PARCELS 979 & 1137
 2nd ELECTION DISTRICT HOWARD COUNTY, MARYLAND
 CHATHAM MEWS, A RESUBDIVISION OF PARCEL B & LOT 1

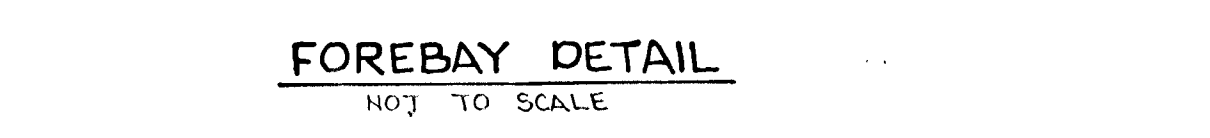
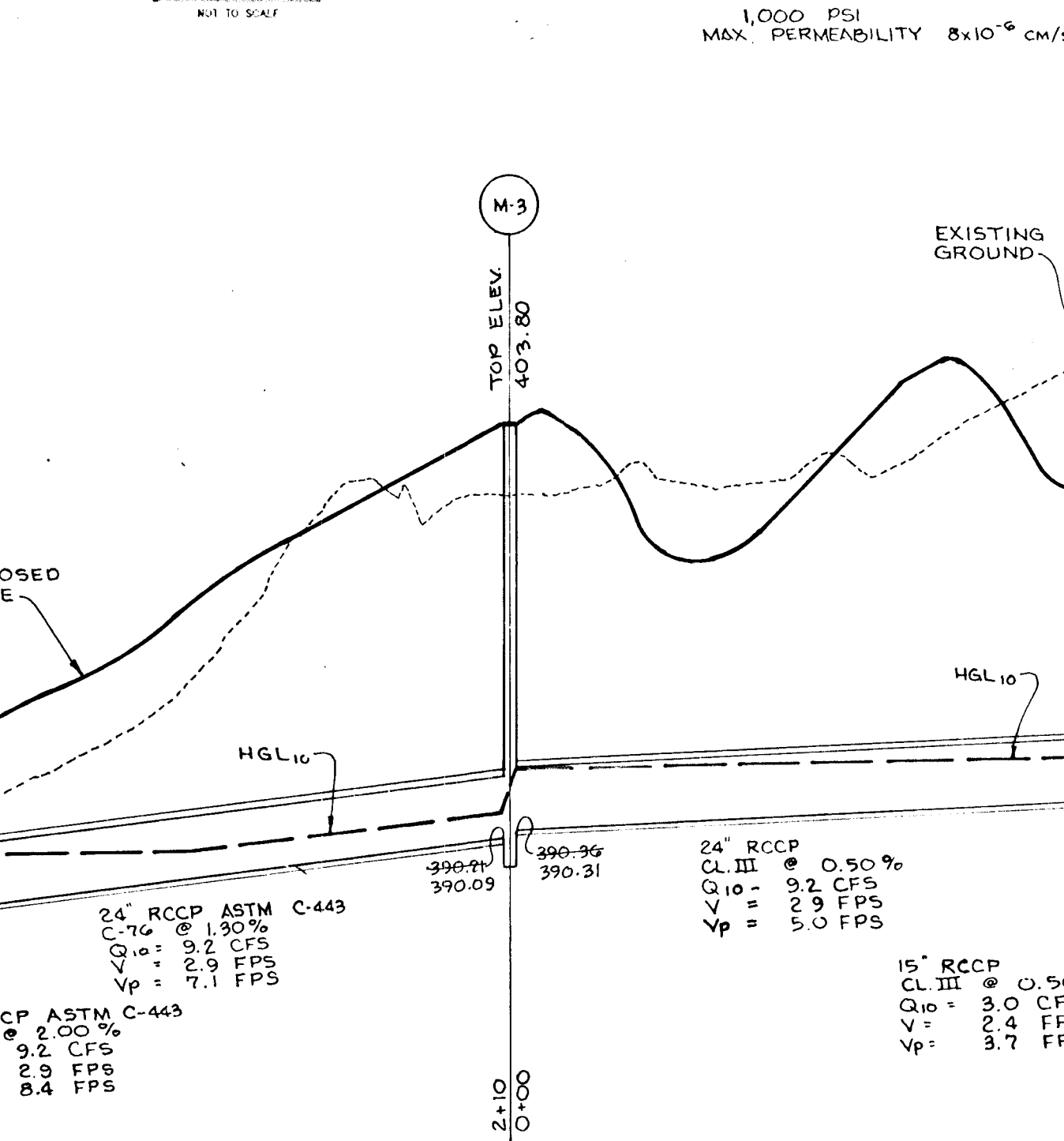
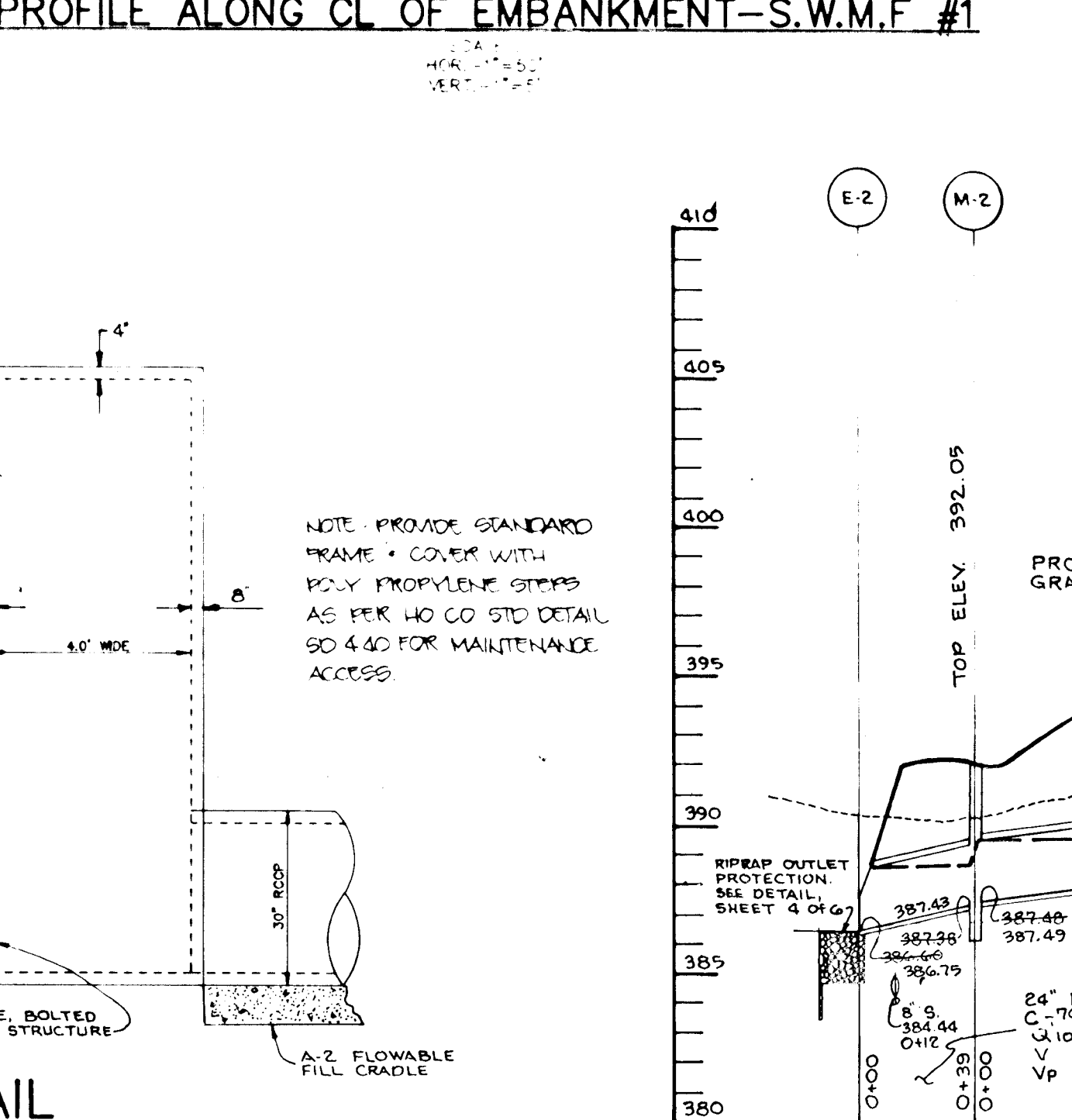
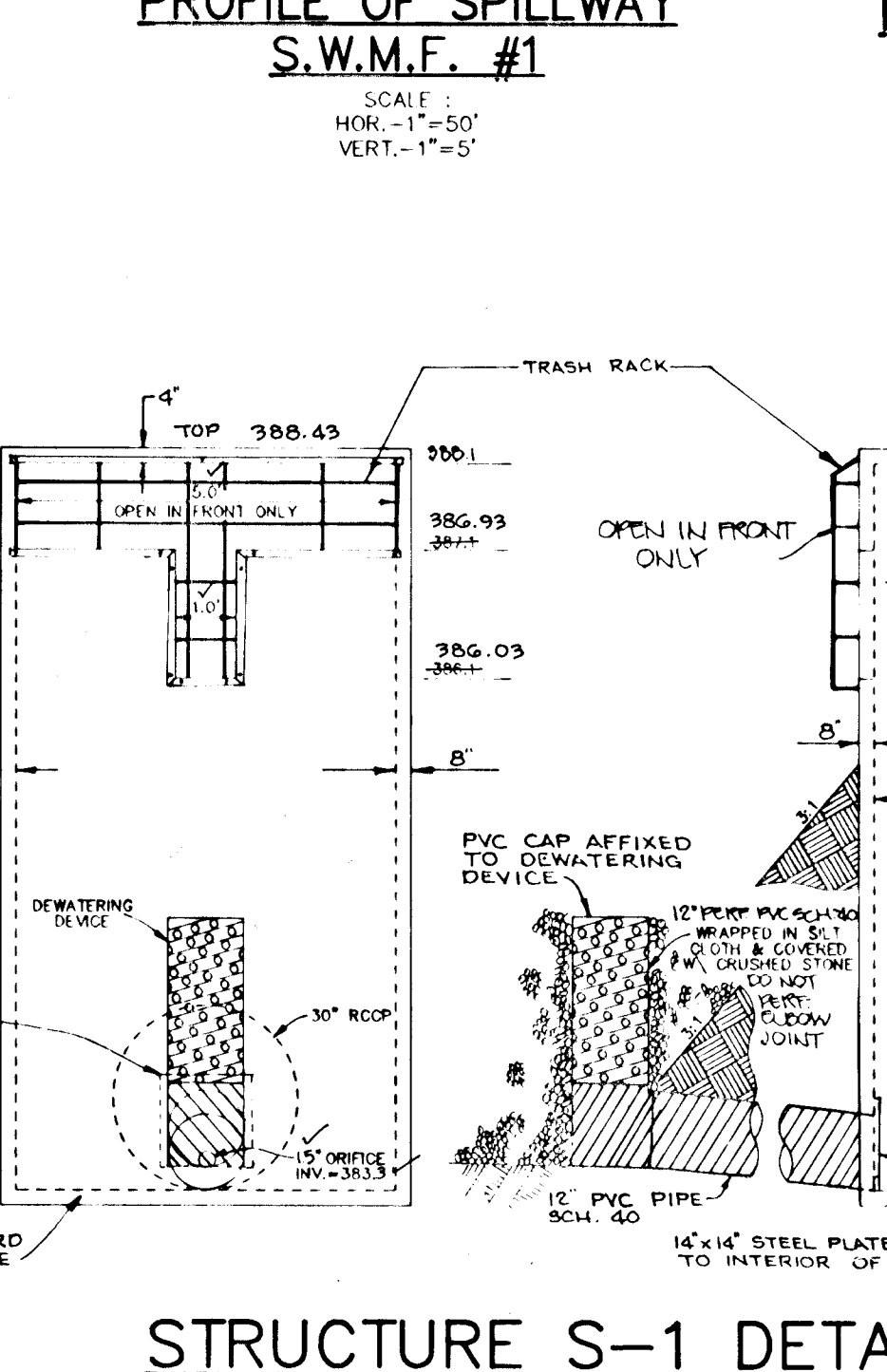
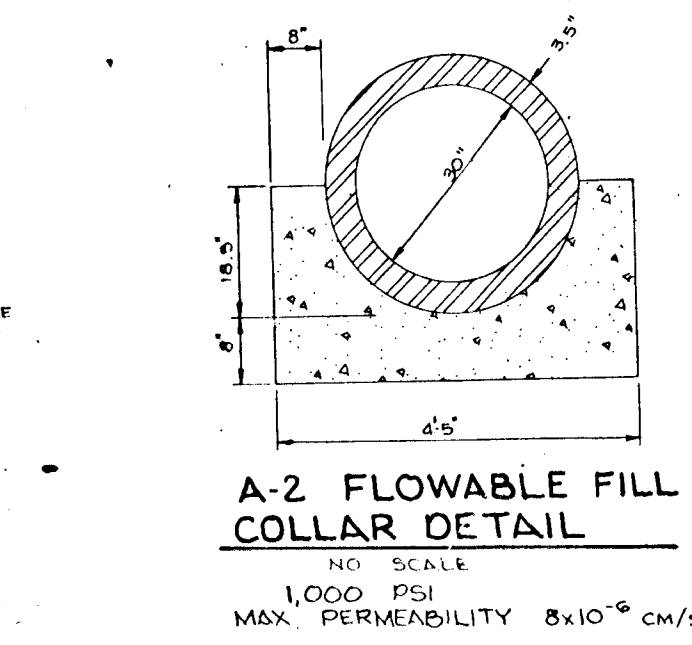
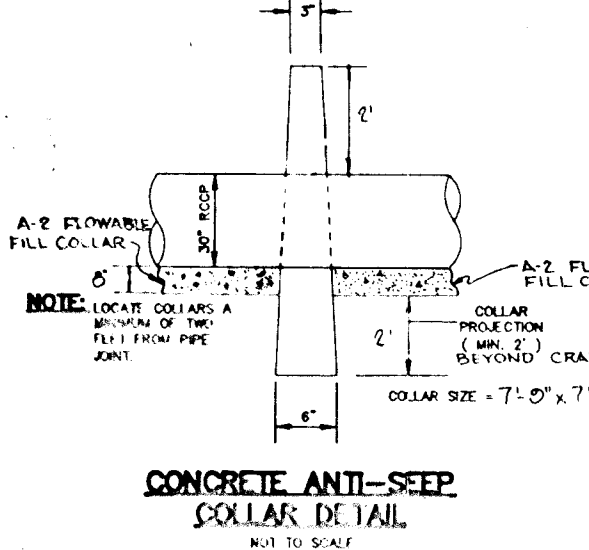
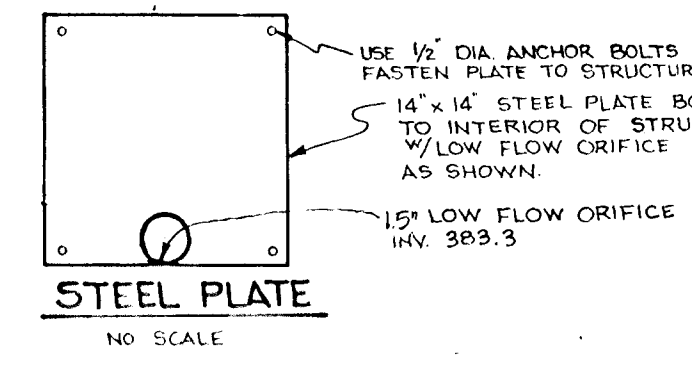
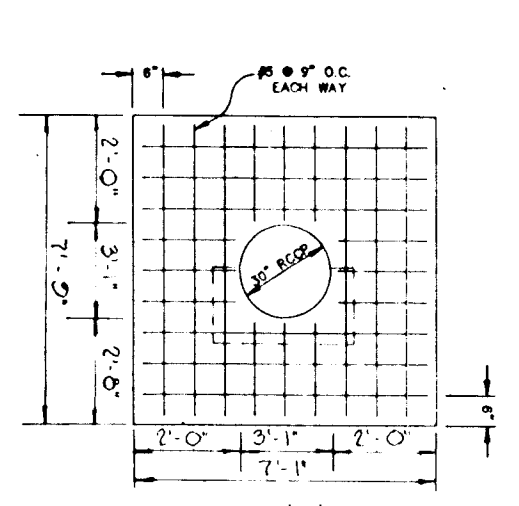
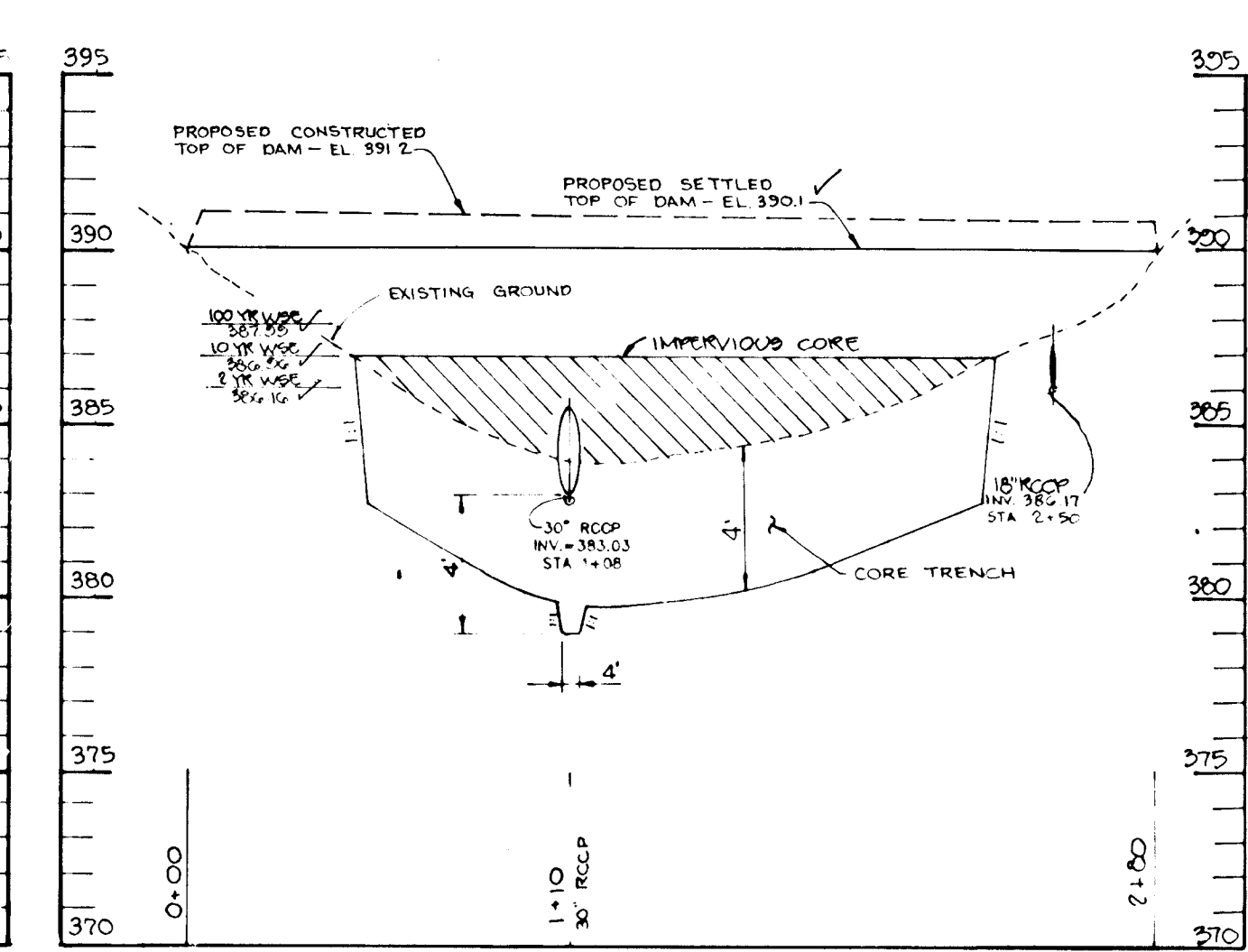
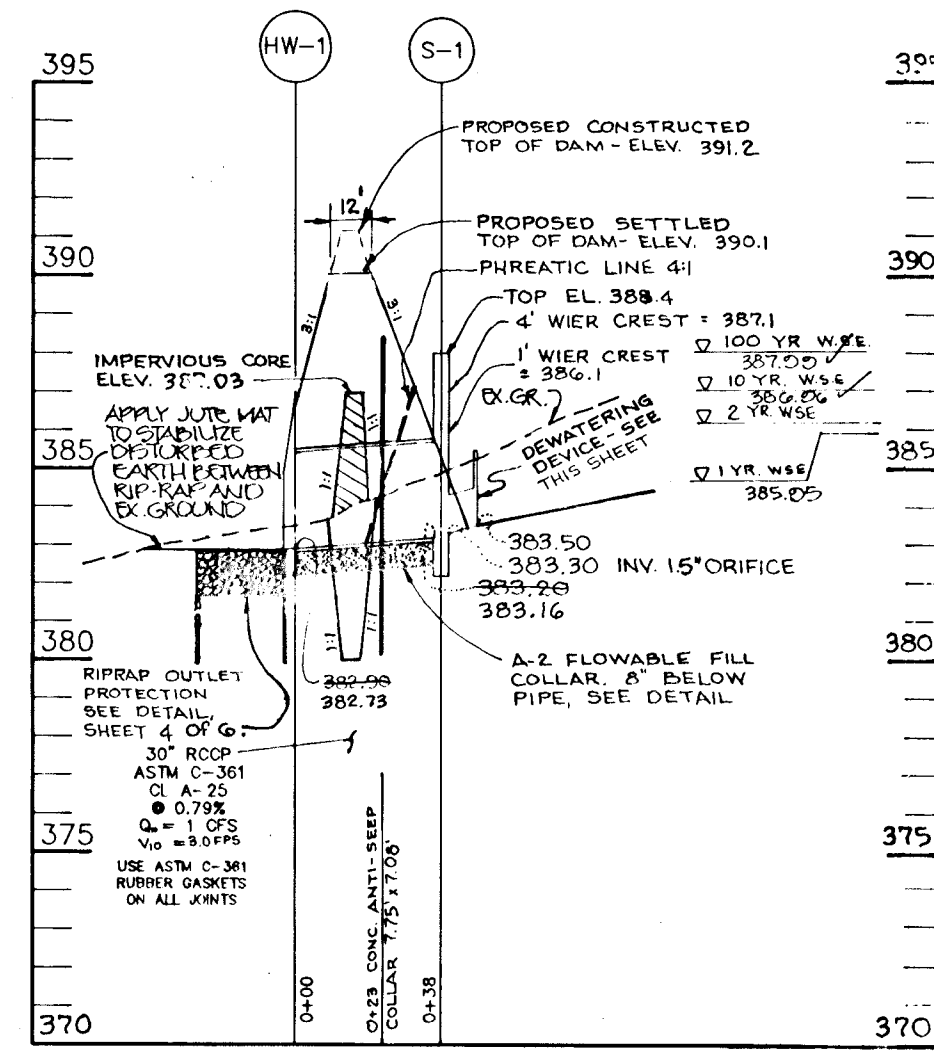
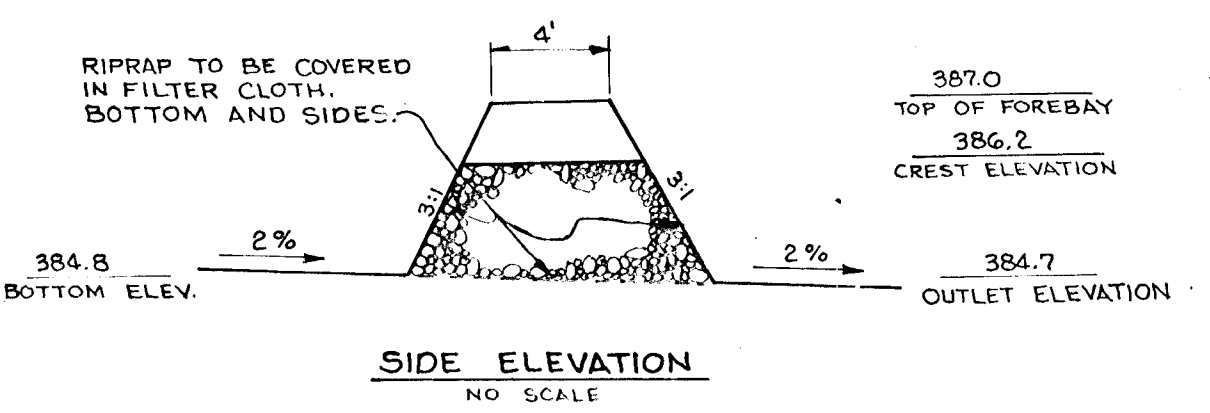
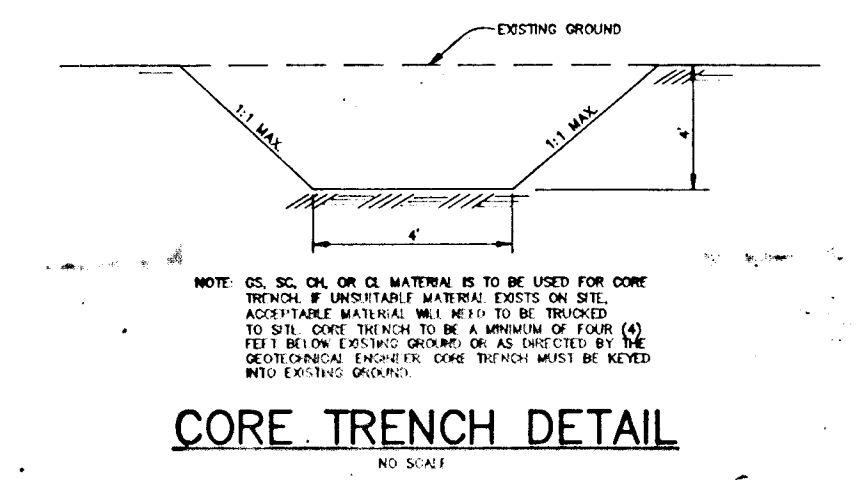
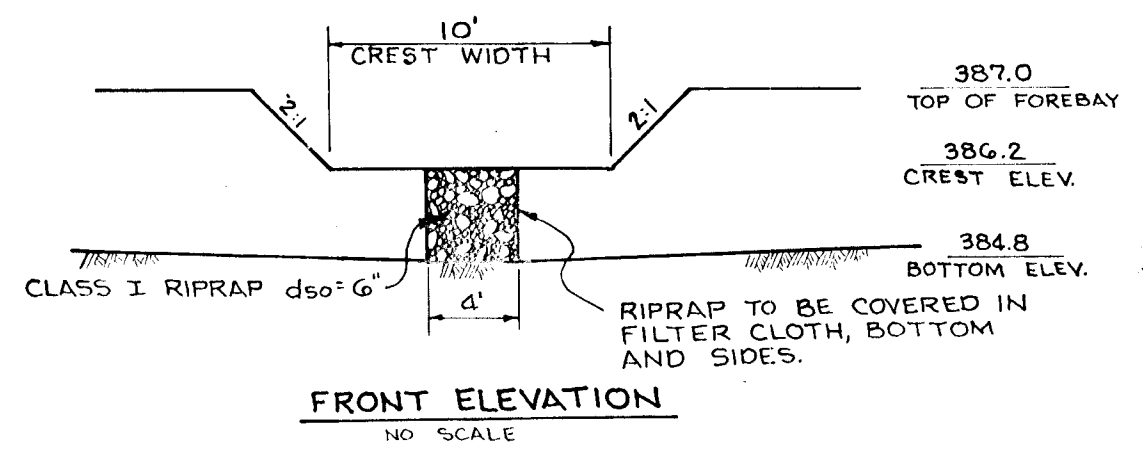
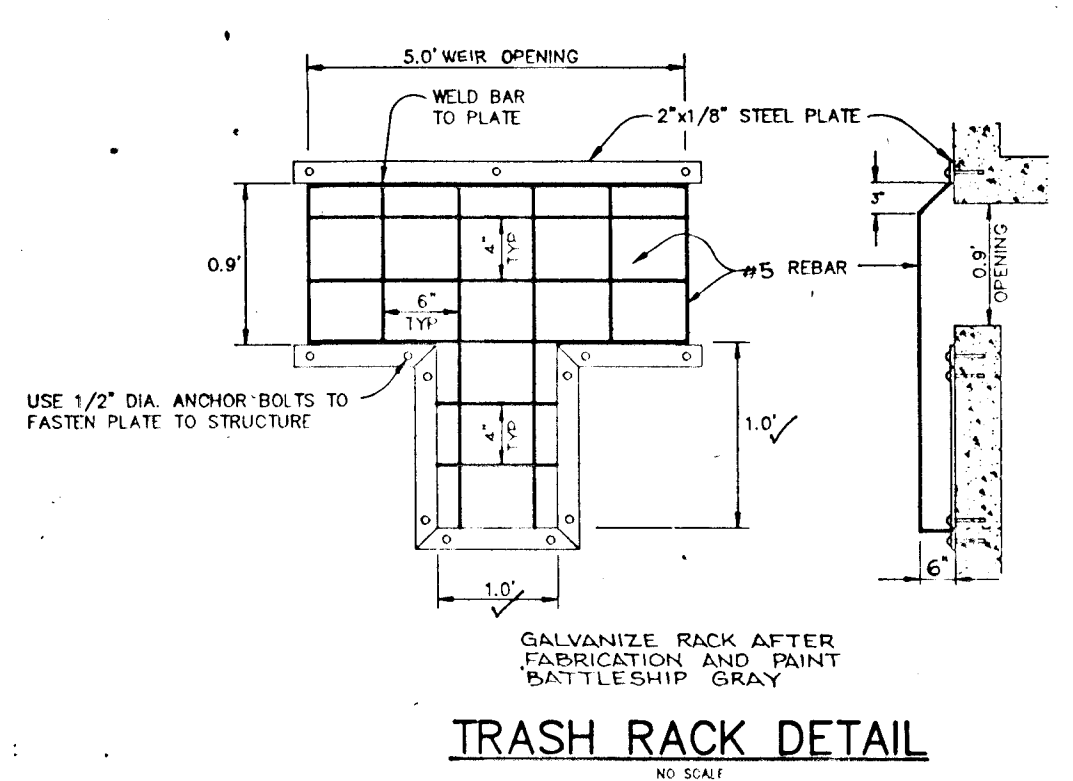
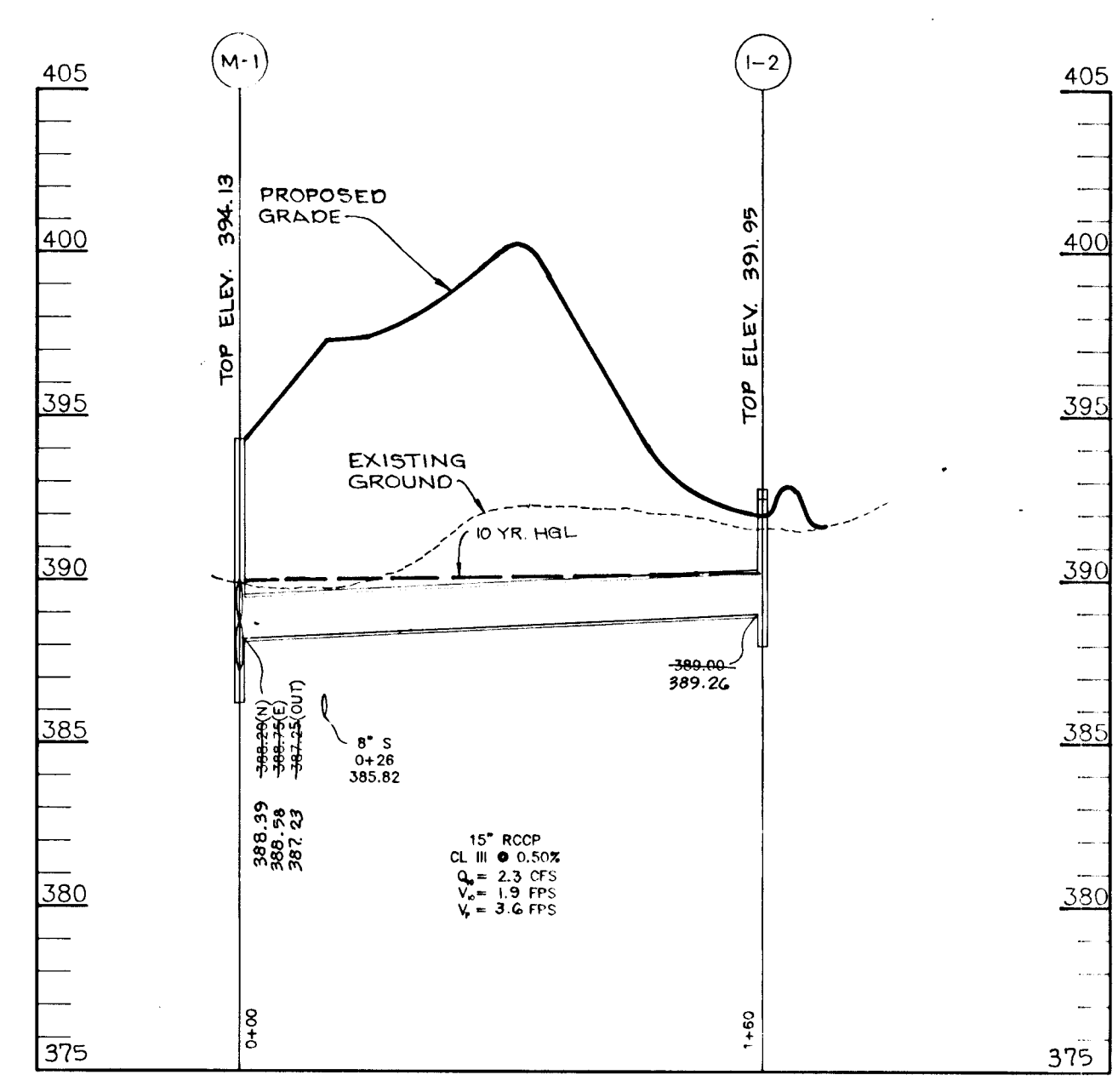
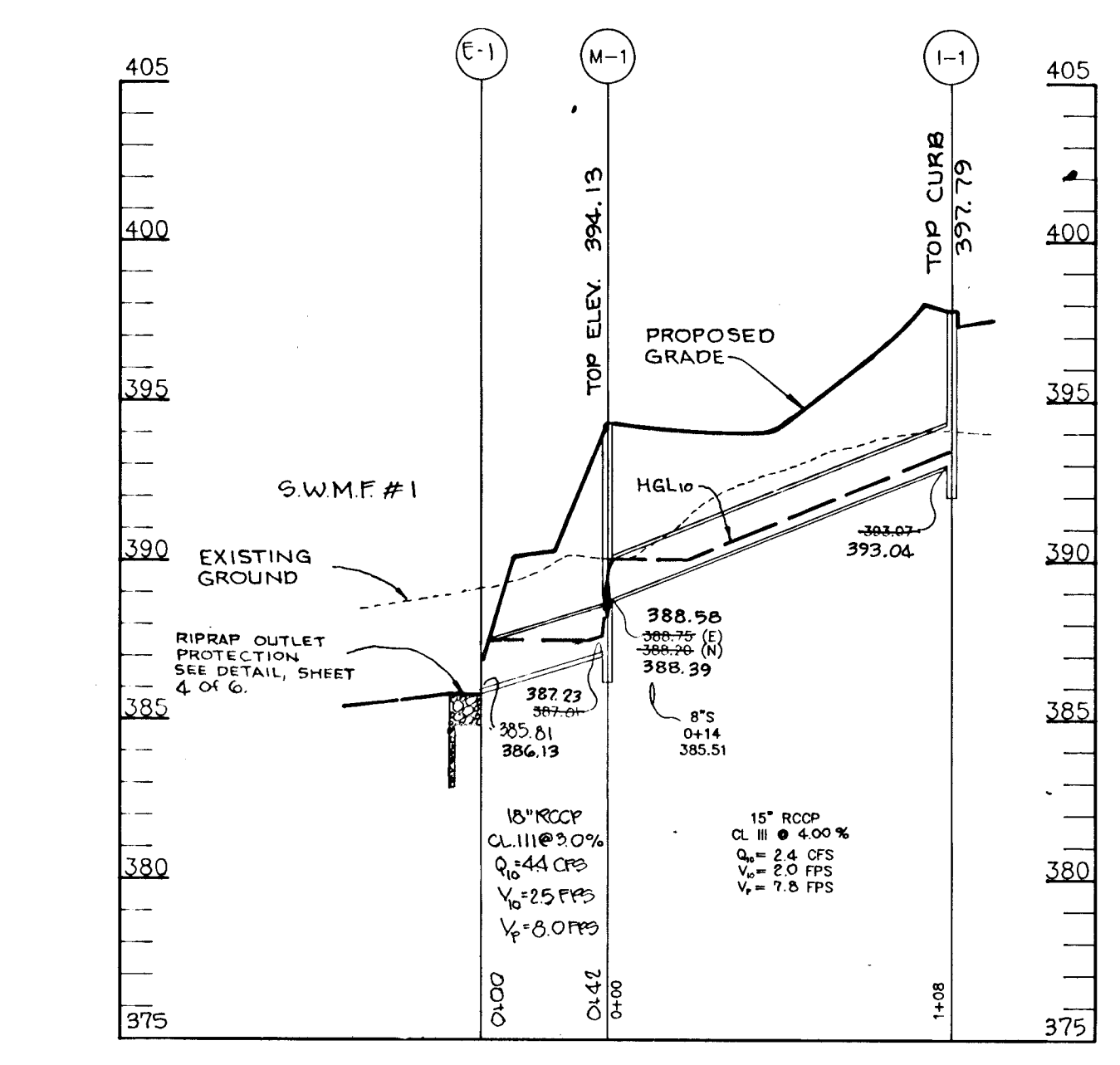
TITLE: **GRADING & SEDIMENT CONTROL PLAN & DRAINAGE AREA MAP**

RIEMER MUEGGE & ASSOCIATES, INC.
 Planners • Engineers • Surveyors
 8818 Centre Park Drive • Suite 200 Columbia, Md 21045
 410-997-8900 FAX: 410-997-9282

DATE **3-1-95**
 DESIGNED BY: JTD
 DRAWN BY: JTD, RJC
 PROJECT NO: 50011
 DATE: FEB 27, 1995
 SCALE: AS SHOWN
 DRAWING NO. 3 OF 6

STRUCTURE SCHEDULE

NUMBER	TYPE	LOCATION	INV IN	INV OUT	TOP EL.	REMARKS
I-1	A-5	STA 1+55.82 LINEAR	---	---	397.81	SEE HO. CO. STD DET. SD 4.01
I-2	D-TYPE	PROPOSED FOREBAY	---	---	392.83	SEE HO. CO. STD DET. SD 4.11
I-3	D-TYPE	N 297,322.03 E 1,398,338.64	---	---	392.10	SEE HO. CO. STD DET. SD 4.11
M-1	4" DIA PRECAST MANHOLE	N 297,326.48 E 1,398,344.28	388.50	388.75	397.80	SEE HO. CO. STD DET. SD 4.12
M-2	4" DIA PRECAST MANHOLE	N 297,326.48 E 1,398,344.28	388.50	388.75	397.80	SEE HO. CO. STD DET. SD 4.12
M-3	4" DIA PRECAST MANHOLE	N 297,326.48 E 1,398,344.28	388.50	388.75	397.80	SEE HO. CO. STD DET. SD 4.12
M-4	4" DIA PRECAST MANHOLE	N 297,326.48 E 1,398,344.28	388.50	388.75	397.80	SEE HO. CO. STD DET. SD 4.12
*E-1	24" TONGUE END SECTION	N 297,326.48 E 1,398,344.28	---	---	---	SEE HO. CO. STD DET. SD 4.01
*E-2	30" TYPE A-5 INLET	N 297,326.48 E 1,398,344.28	---	---	---	SEE HO. CO. STD DET. SD 4.22
1-4	5" INLET	N 297,326.48 E 1,398,344.28	---	---	---	SEE HO. CO. STD DET. SD 4.22
1-5	5" INLET	N 297,326.48 E 1,398,344.28	---	---	---	SEE HO. CO. STD DET. SD 4.22



BORING LOGS
NOT TO SCALE

NO.	DEPTH	SOIL TYPE	REMARKS
B-1	0'-5'	TOPSOIL	TAN, BROWN, MOIST, MEDIUM STIFF CLAYEY SILT, WITH SOME FINE SAND AND MICA (ML)
B-2	0'-5'	TOPSOIL	BROWN, MOIST, LOOSE, SILTY SAND WITH MICA (SM)
B-3	0'-5'	TOPSOIL	BROWN, MOIST, MEDIUM STIFF SANDY SILT, WITH SOME MICA (ML)
B-4	0'-5'	TOPSOIL	BROWN, GREENISH, MOIST, LOOSE TO MEDIUM DENSE, COARSE, MICACEOUS SAND, WITH FRAGMENTS OF FINE SAND, TRACE OF FINE ROCK FRAGMENTS (SM)
B-5	0'-5'	TOPSOIL	BROWN, GREENISH, MOIST, LOOSE TO MEDIUM DENSE, COARSE, MICACEOUS SAND, WITH FRAGMENTS OF FINE SAND, TRACE OF FINE ROCK FRAGMENTS (SM)

AS BUILT CERTIFICATE

J. Savelle 12-8-97
DATE

APPROVED: HOWARD COUNTY DEPARTMENT OF PLANNING AND ZONING.

Gina Summery 3/28/95
DATE

APPROVED: HOWARD COUNTY DEPARTMENT OF PUBLIC WORKS.

Andrew M. Doucke 3-17-95
DATE

Paul J. Sargent 3/23/95
DATE

BY THE DEVELOPER:
I/WE CERTIFY THAT ALL DEVELOPMENT AND/OR CONSTRUCTION WILL BE DONE ACCORDING TO THESE PLANS, AND THAT ANY RESPONSIBLE PERSONNEL INVOLVED IN THE CONSTRUCTION PROJECT WILL HAVE A CERTIFICATE OF ATTENDANCE AT A DEPARTMENT OF THE ENVIRONMENT APPROVED TRAINING PROGRAM FOR THE CONTROL OF SEDIMENT AND EROSION BEFORE BEGINNING THE PROJECT. I SHALL ENGAGE A REGISTERED PROFESSIONAL ENGINEER TO SUPERVISE POND CONSTRUCTION AND PROVIDE THE HOWARD SOIL CONSERVATION DISTRICT WITH AN "AS-BUILT" PLAN OF THE POND WITHIN 30 DAYS OF COMPLETION. I ALSO AUTHORIZE PERIODIC ON-SITE INSPECTIONS BY THE HOWARD SOIL CONSERVATION DISTRICT.

Paul J. Sargent 3-1-95
DATE

BY THE ENGINEER:
I CERTIFY THAT THIS PLAN FOR POND CONSTRUCTION, EROSION AND SEDIMENT CONTROL REPRESENTS A PRACTICAL AND WORKABLE PLAN BASED ON MY PERSONAL KNOWLEDGE OF THE SITE CONDITIONS. THIS PLAN WAS PREPARED IN ACCORDANCE WITH THE REQUIREMENTS OF THE HOWARD SOIL CONSERVATION DISTRICT. I HAVE NOTIFIED THE DEVELOPER THAT HE/SHE MUST ENGAGE A REGISTERED PROFESSIONAL ENGINEER TO SUPERVISE POND CONSTRUCTION AND PROVIDE THE HOWARD SOIL CONSERVATION DISTRICT WITH AN "AS-BUILT" PLAN OF THE POND WITHIN 30 DAYS OF COMPLETION.

Mac Kutzer 3-1-95
DATE

THESE PLANS HAVE BEEN REVIEWED FOR THE HOWARD SOIL CONSERVATION DISTRICT AND MEET THE TECHNICAL REQUIREMENTS FOR SMALL POND CONSTRUCTION, SOIL EROSION AND SEDIMENT CONTROL.

Roberta Zickow 3/19/95
DATE

HOWARD SOIL CONSERVATION DISTRICT

DATE	NO.	ADDED INLETS 4&5 TO STRUCTURE SCHEDULE	REVISION
10/10/96	Δ		

OWNERS: MICHAEL J. LYNCH
DEVELOPER: SARGENT DEVELOPMENT CORP.

PROJECT: CHATHAM MEWS
LOTS 1-17

AREA TAX MAP NO. 24 ZONED R-12 & B-2
PARCELS 979 & 1137
2nd ELECTION DISTRICT HOWARD COUNTY, MARYLAND
CHATHAM MEWS, A RESUBDIVISION OF PARCEL B & LOT 1

TITLE: STORM DRAIN PROFILES & S.W.M. DETAILS

RIEMER MUEGGE & ASSOCIATES, INC.
8818 Centre Park Drive • Suite 200 Columbia, Md 21045
410-997-8900 FAX: 410-997-9282

3-1-95 DATE
DESIGNED BY: JTD
DRAWN BY: JTD, RJC
PROJECT NO: 50011
DATE: FEB 27, 1995
SCALE: AS SHOWN
DRAWING NO. 5 OF 6

1728

SCHEDULE D STORMWATER MANAGEMENT AREA

Linear Feet of Perimeter	690
Credit for Existing Vegetation (No, Yes)	yes 310' Ex. woods
Number of Trees Required	8
Shade Trees	10
Evergreen Trees	0
Number of Trees Provided	0
Shade Trees	11
Evergreen Trees	11
Other Trees (2:1 substitution)	15

SCHEDULE A PERIMETER LANDSCAPE EDGE

CATEGORY	ADJACENT TO PERIMETER PROPERTIES				
	A	B	C	D	E
Perimeter Edge					
Landscape Type	A	A	A	A	A
Linear Feet of Roadway Frontage/Perimeter	860	290	550	225	330
Credit for Existing Vegetation	yes	no	no	yes	yes
Yes No Linear Feet Describe below if needed	200			60	170
Number of Plants Required					
Shade Trees	11	5	9	3	3
Evergreen Trees	0	0	0	0	0
Shrubs	0	0	0	0	0
Number of Plants Provided					
Shade Trees	0	0	7	0	0
Evergreen Trees	22	10	25	6	6
Flowering Trees	0	0	8	0	0
Describe plant substitution credits below if needed	*1	*1		*2	*2

1 The requirement that a minimum of 50% of total plant material be shade trees has not been met because the developer had previously committed to an evergreen screen to existing adjacent homes and because evergreen material will best screen existing off site parking and driveways.

2 These plants have been physically located along Perimeter C.

NOTES:
This plan has been prepared in accordance with the provisions of Section 16.124 of the Howard County Code and the Landscape Manual. Financial surety for the required landscaping has been posted as part of the DPM developer's agreement in the amount of \$4,800.00. The developer shall install all proposed plant materials.

PLANT LIST

KEY	QTY	NAME	SIZE	REMARKS
A	4	ACER RUBRUM 'OCTOBER GLORY' OCTOBER GLORY RED MAPLE	2 1/2"-3" CAL. 12'-14' HT.	B & B Full Crown
F	3	FRAXINUS AMERICANA 'AUTUMN PURPLE' AUTUMN PURPLE WHITE ASH	2 1/2"-3" CAL. 12'-14' HT.	B & B Full Crown
M	4	MALUS 'KATHERINE' KATHERINE CRABAPPLE	1 1/2"-2" CAL. 8'-10' HT.	B & B
PH	10	PSEUDOTSUGA MENZIESII DOUGLAS FIR	6'-8' HT.	B & B
PS	47	PINUS STROBUS WHITE PINE	6'-8' HT.	B & B Natural
PY	4	PRUNUS YUENGENSIS YOSHINO CHERRY	1 1/2"-2" CAL. 8'-10' HT.	B & B
VP	15	VIBURNUM PRUNIFOLIUM BLACKHAM VIBURNUM	2 1/2"-3" HT.	Cont.
PT	23	YENUS THORBERGIANA JAPANESE BLACK PINE	6'-8' HT.	B & B

APPROVED: HOWARD COUNTY DEPARTMENT OF PLANNING AND ZONING.
Gina Surinany
CHIEF, DIVISION OF LAND DEVELOPMENT AND RESEARCH
3/28/95
DATE

APPROVED: HOWARD COUNTY DEPARTMENT OF PUBLIC WORKS.
Andrew M. Danaher
CHIEF, BUREAU OF HIGHWAYS
3-17-95
DATE
Richard J. Johnson
CHIEF, BUREAU OF ENGINEERING
3/23/95
DATE

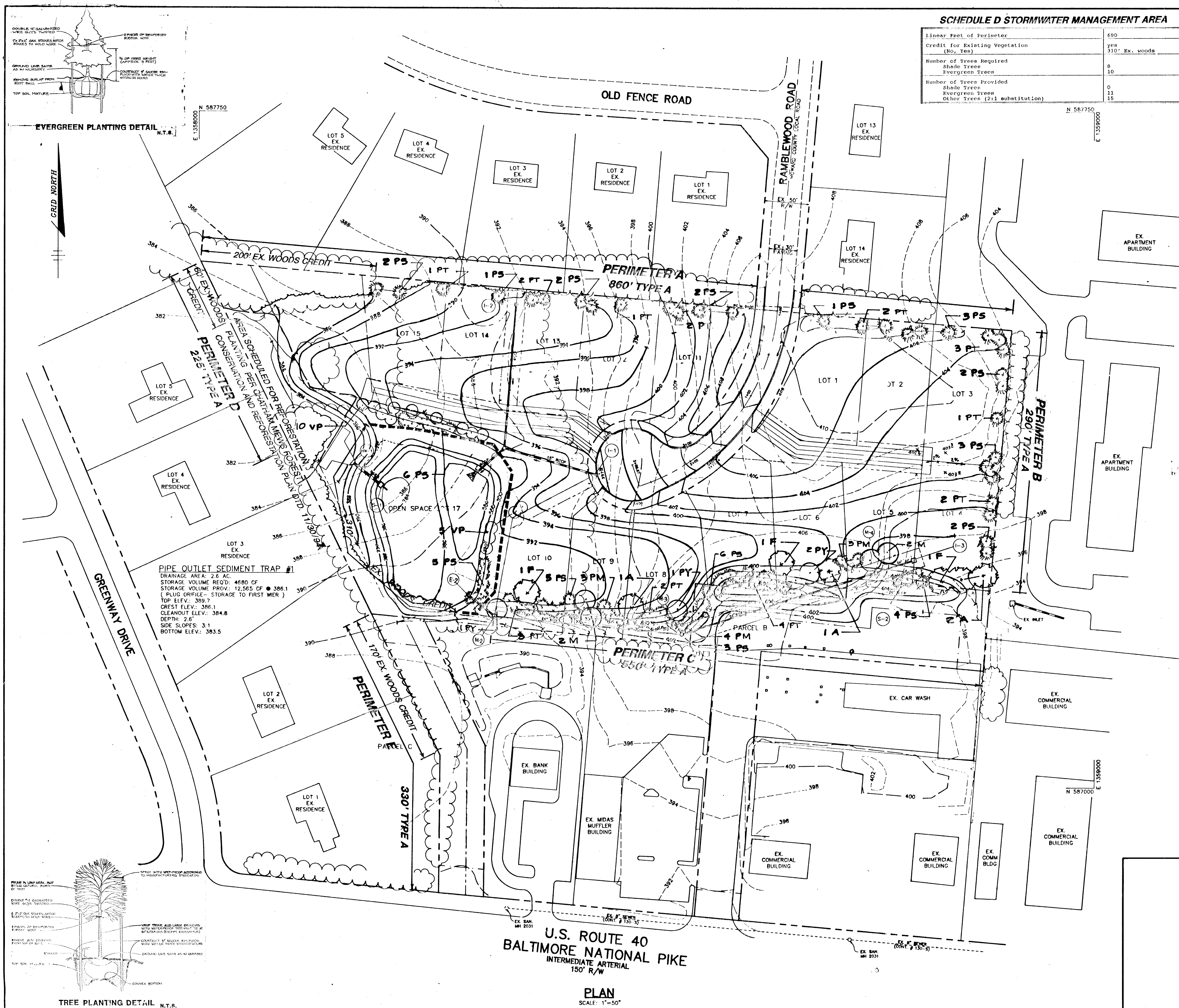
DATE	NO.	REVISION

OWNERS	DEVELOPER
MICHAEL J. LYNCH 9430 BALT. NATIONAL PIKE ELLICOTT CITY, MD 21143 410-481-5188	CHARLES SHEEHAN ARIANA SHEEHAN 1022 INGLETSIDE AVE. CATONSVILLE, MD 21228 SARGENT DEVELOPMENT CORP. 13245 WESTMATH LANE CLARKSVILLE, MD 21029 301-854-0938

PROJECT: **CHATHAM MEWS**
LOTS 1-17
AREATAX MAP NO. 24 ZONED R-12 & B-2
PARCELS 979 & 1137
2nd ELECTION DISTRICT HOWARD COUNTY, MARYLAND
CHATHAM MEWS, A RESUBDIVISION OF PARCEL B & LOT 1
TITLE: **LANDSCAPE PLAN**

RIEMER MUEGGE & ASSOCIATES, INC.
Planners • Engineers • Surveyors
8818 Centre Park Drive • Suite 200 Columbia, Md 21045
410-997-8900 FAX: 410-997-9262

3-1-95
DATE
DESIGNED BY: Z.K.
DRAWN BY: Z.K.
PROJECT NO: 50008
DATE: JAN. 24, 1995
SCALE: 1" = 50'
DRAWING NO. G OF 6



1721

F 95.92