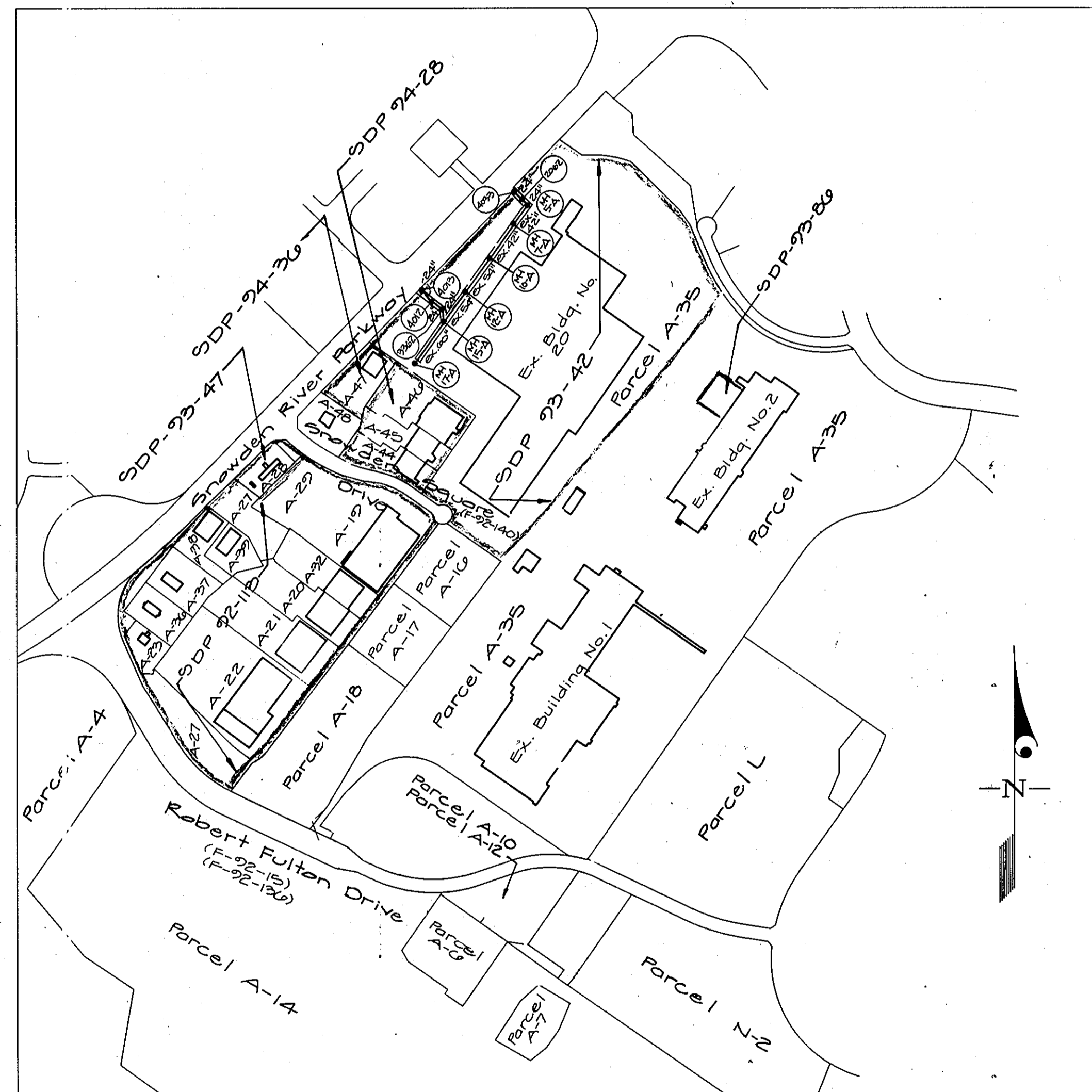


STORM DRAINS

GATEWAY COMMERCE CENTER

SIXTH ELECTION DISTRICT

HOWARD COUNTY, MARYLAND



VICINITY MAP
SCALE: 1"=600'

OWNER/DEVELOPER
HOWARD RESEARCH AND DEVELOPMENT CORPORATION
10275 LITTLE PATUXENT PARKWAY
COLUMBIA, MARYLAND 21044

APPROVED: DEPARTMENT OF PUBLIC WORKS	
<i>Paul J. Sapon</i> CHIEF, BUREAU OF ENGINEERING	7/17/96 DATE
APPROVED: DEPARTMENT OF PLANNING AND ZONING	
<i>Jim Summery</i> CHIEF, DIVISION OF LAND DEVELOPMENT & RESEARCH	8/12/96 DATE
APPROVED: DEPARTMENT OF PUBLIC WORKS	
<i>Andrew M. Pauley</i> CHIEF, BUREAU OF HIGHWAYS	12-22-95 DATE
APPROVED: DEPARTMENT OF PUBLIC WORKS	
<i>Chris Dammann</i> CHIEF, LAND DEVELOPMENT DIVISION MK	7/17/96 DATE



CL

1158

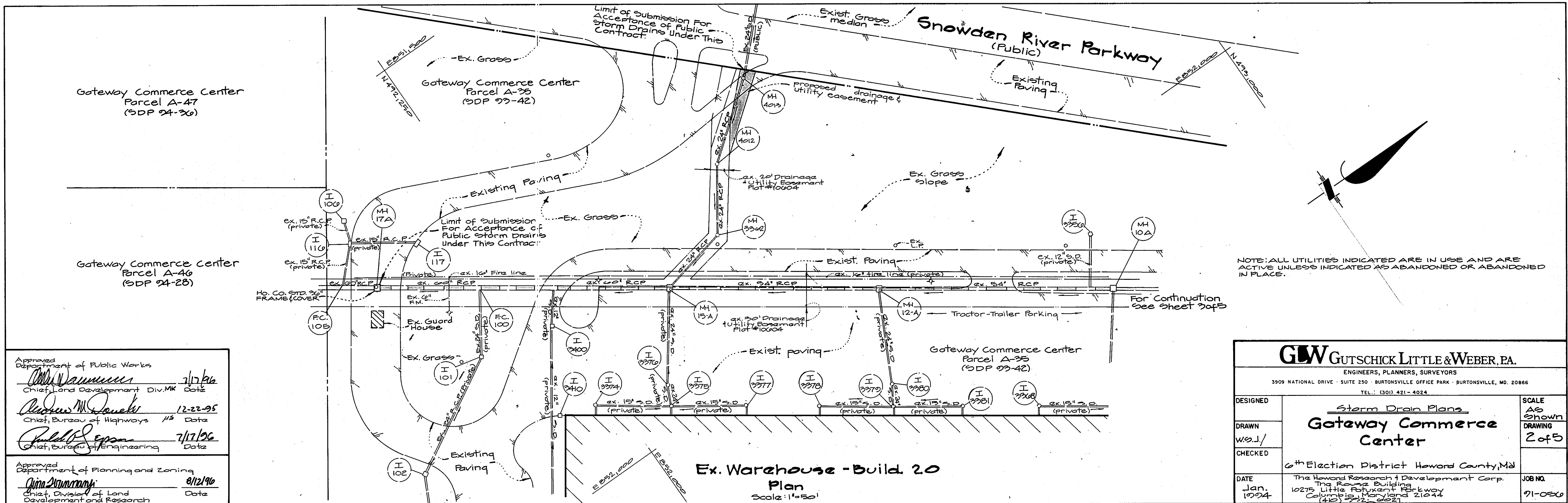
F-92-999

GW GUTSCHICK LITTLE & WEBER, P.A.
CIVIL ENGINEERS, SURVEYORS, PLANNERS, LANDSCAPE ARCHITECTS
3909 NATIONAL DRIVE - SUITE 250 - BURTONSVILLE OFFICE PARK - BURTONSVILLE, MD. 20886
TELEPHONE: (301)421-4024 NO. VA. (301)989-2524 BALTO. (301)880-1820 FAX (301)421-4186

DATE	REVISION	BY	APP'R.

Cover sheet			
Phase III Storm Drain Dedication Gateway Commerce Center		DES.: SCALE 1" = 600'	ZONING G.L.W. FILE No. 91-055
Sixth Election District		DRN.: W.S.J. DATE December 1995	TAX MAP No. 42 SHEET 1 of 5
Howard County, Maryland		CHK.: DATE	

F-92-1003(DPW)



NOTE: ALL UTILITIES INDICATED ARE IN USE AND ARE ACTIVE UNLESS INDICATED AS ABANDONED OR ABANDONED IN PLACE.

Approved
Department of Public Works
William Dammicus 7/17/96
Chief, Land Development Div. MK Date

Richard M. Daniels 12-22-95
Chief, Bureau of Highways HS Date

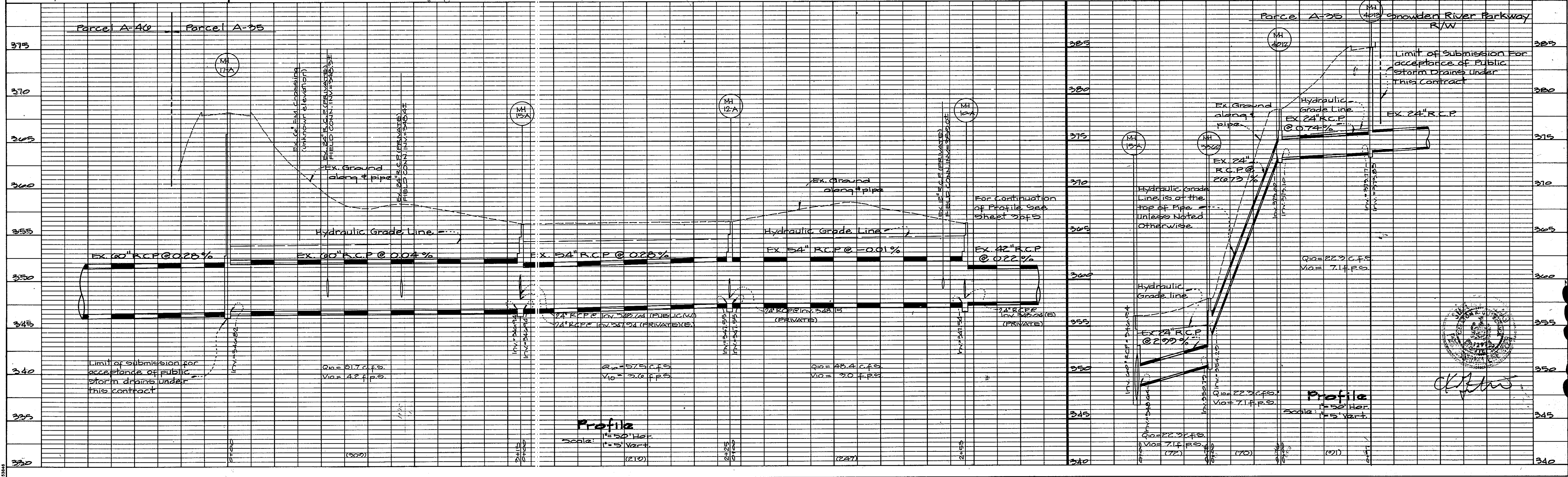
Paul S. Egan 7/17/96
Chief, Bureau of Engineering Date

Approved
Department of Planning and Zoning
Anna Stumm 8/12/96
Chief, Division of Land Development and Research Date

GW GUTSCHICK LITTLE & WEBER, P.A.
ENGINEERS, PLANNERS, SURVEYORS
3909 NATIONAL DRIVE · SUITE 250 · BURTONSVILLE OFFICE PARK · BURTONSVILLE, MD. 20866
TEL.: (301) 421-4024

DESIGNED	Storm Drain Plans Gateway Commerce Center	SCALE AS SHOWN DRAWING 2 of 5
DRAWN W.S.J./		
CHECKED	6 th Election District Howard County, Md	
DATE Jan. 1994	The Howard Research & Development Corp. The Rouse Building 10275 Little Patuxent Parkway Columbia, Maryland 21044 (410) 727-0251	JOB NO. 91-0560

Ex. Warehouse - Build. 20
Plan
Scale: 1"=50'

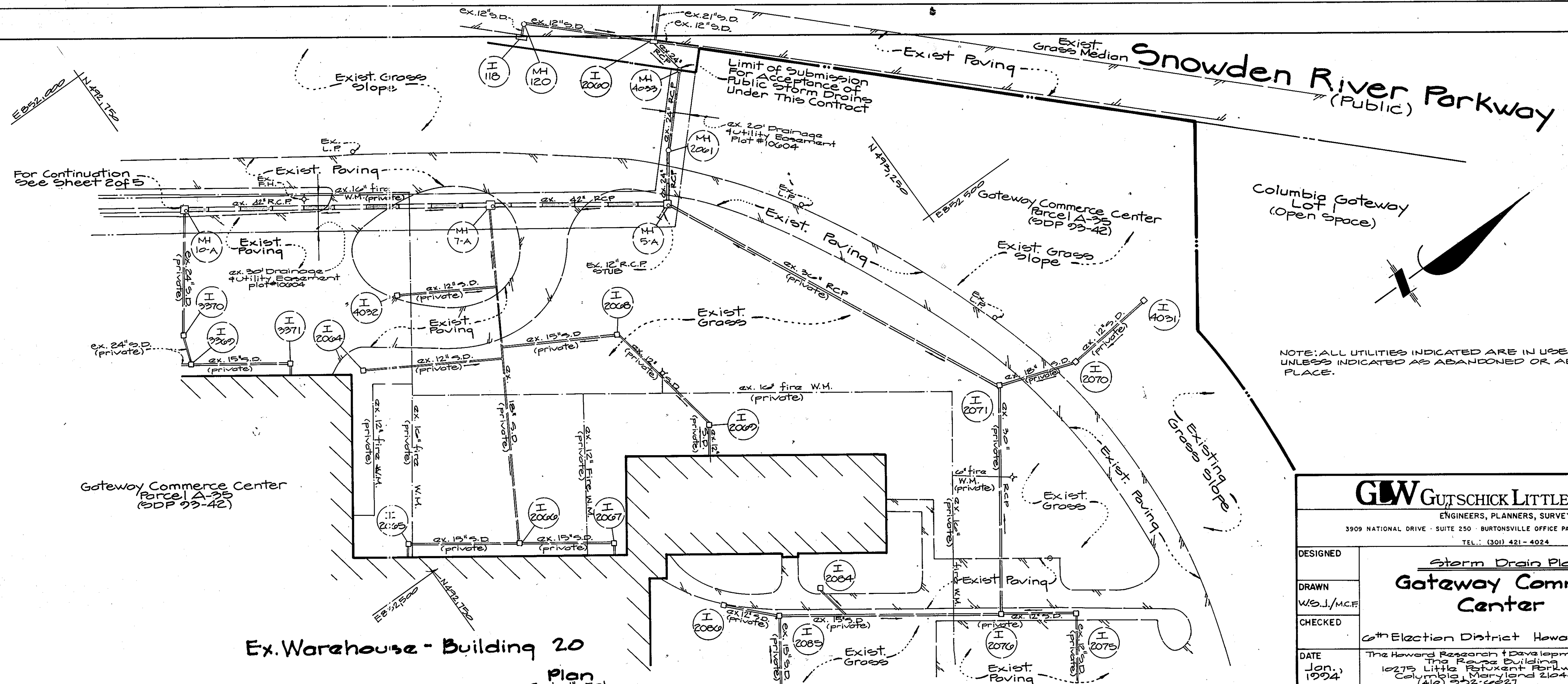


Profile
Scale: 1"=50' Hor.
1"=5' Vert.

Profile
Scale: 1"=50' Hor.
1"=5' Vert.

666-2637

8511



NOTE: ALL UTILITIES INDICATED ARE IN USE AND ACTIVE UNLESS INDICATED AS ABANDONED OR ABANDONED IN PLACE.

Approved Department of Public Works
William J. ... 7/16/96
 Chief, Land Development Div. MK Date

Richard M. ... 12-22-95
 Chief, Bureau of Highways HS Date

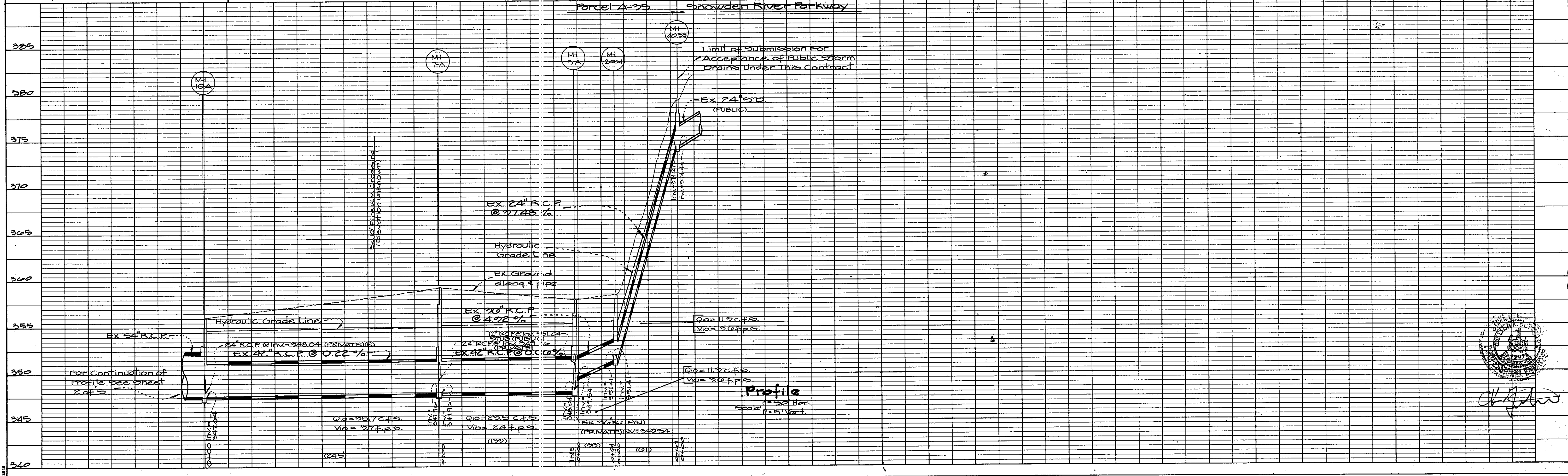
Paul ... 7/17/96
 Chief, Bureau of Engineering Date

Approved Department of Planning and Zoning
John ... 8/12/96
 Chief, Division of Land Development and Research Date

GLW GUTSCHICK LITTLE & WEBER, P.A.
 ENGINEERS, PLANNERS, SURVEYORS
 3909 NATIONAL DRIVE - SUITE 250 - BURTONSVILLE OFFICE PARK - BURTONSVILLE, MD. 20866
 TEL.: (301) 421-4024

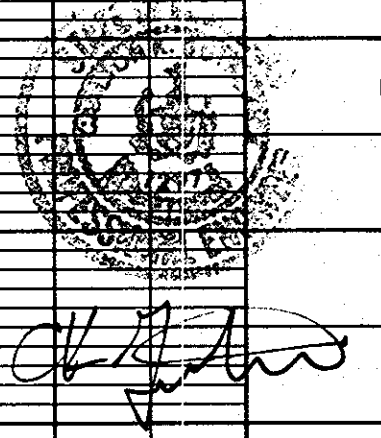
DESIGNED	Storm Drain Plans	SCALE AS SHOWN
DRAWN	Gateway Commerce Center	DRAWING 3 of 5
CHECKED	6th Election District Howard County, Md	
DATE	The Howard Research & Development Corp. The Rouse Building 10275 Little Patuxent Parkway Columbia, Maryland 21044 (410) 522-0327	JOB NO. 91-0560

Ex. Warehouse - Building 20
 Plan Scale: 1" = 50'



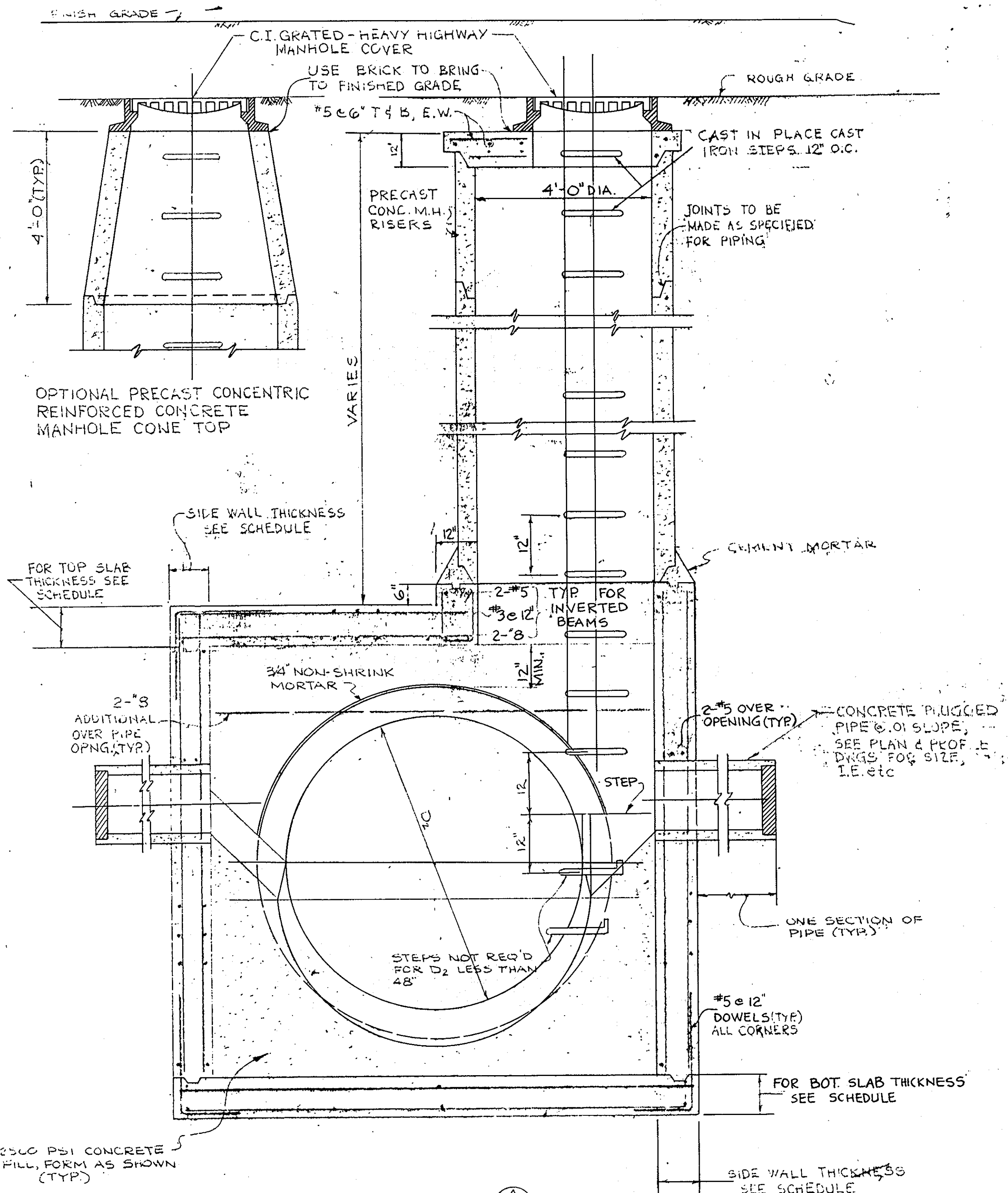
Profile Scale: 1" = 5' Vert.

1158



666-265F

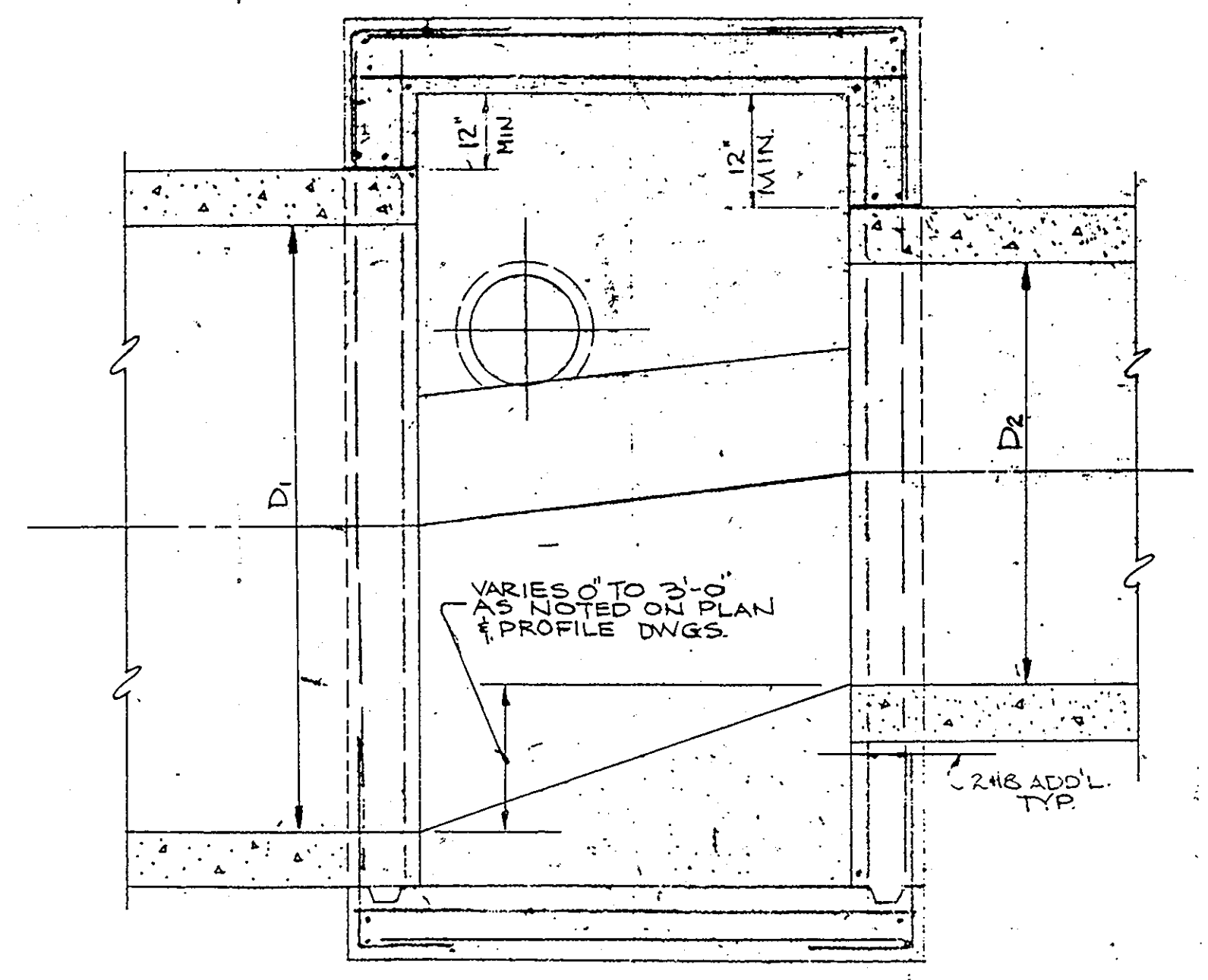
Structure Schedule					
Structure	Top Elevation	Inv. In.	Inv. Out	North Coordinate	East Coordinate
15A	256.04	246.24	246.24	492267.26	851866.58
2202	257.27	254.22	250.72	492442.26	851849.23
4012	278.20	273.10	273.00	492486.14	851787.07
4013	284.23	273.83	273.77	492562.41	851727.72
12A	256.21	247.55	247.55	492550.17	851225.72
10A	256.02	247.64	247.54	492756.22	852140.00
7A	252.28	247.26	247.26	492261.87	852282.32
5A	257.24	242.54	248.04	492079.12	852365.88
2001	258.21	251.41	251.41	492107.84	852222.22
4022	272.22	274.44	274.27	492153.40	852284.18



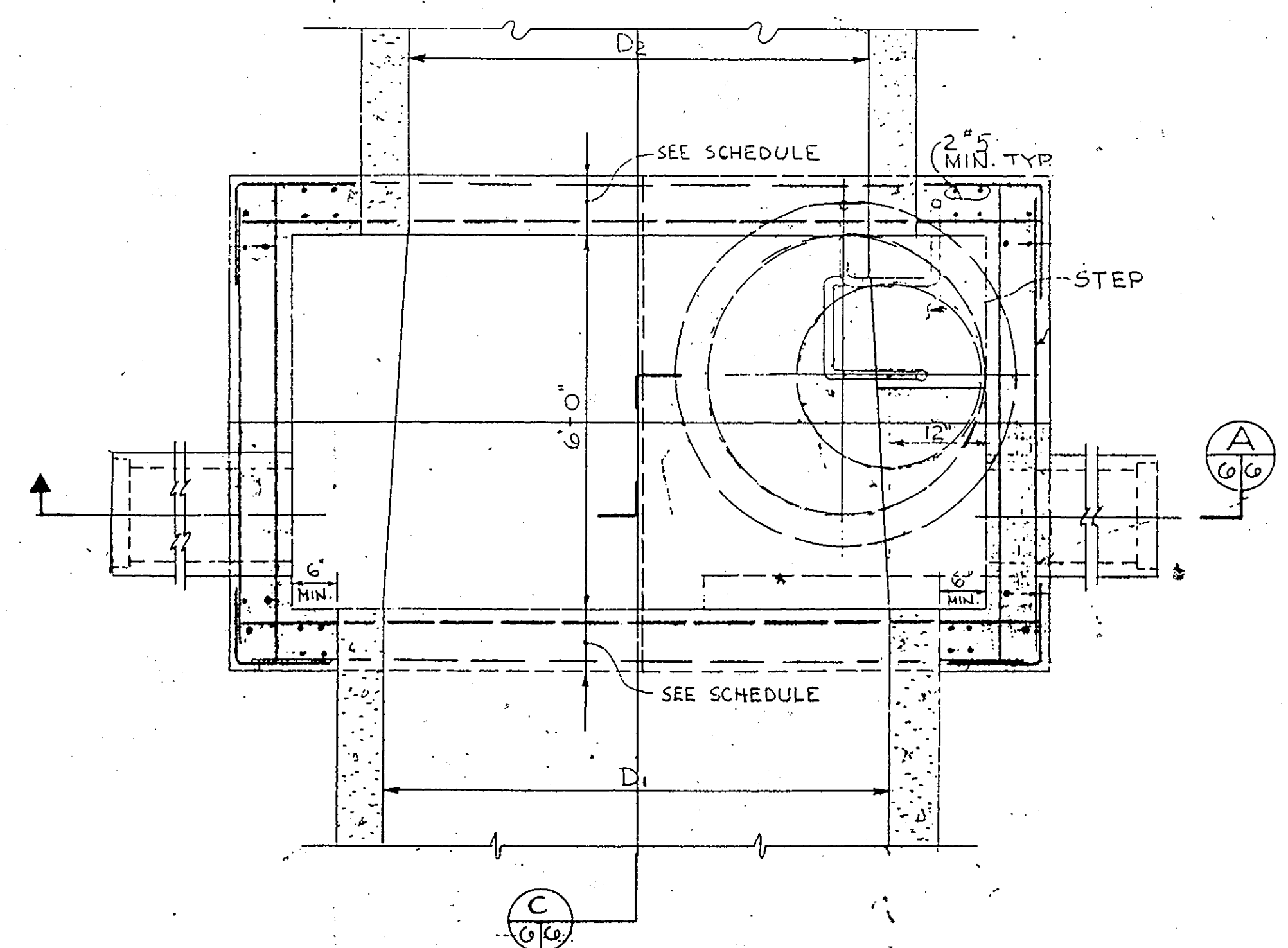
SECTION A-A
 DETAILS OF TYPICAL STORM SEWER MANHOLE
 NO SCALE

TYPE	TOP SLAB		BOTTOM SLAB		SIDE WALLS	
	THICKNESS	STEEL (SS)	THICKNESS	STEEL (SS)	THICKNESS	STEEL (L.F. HORIZ.)
A	12"	#6 @ BOT	12"	#7 @ TOP	12"	#5 @ 6"
B	12"	#7 @ BOT	14"	#7 @ TOP	12"	#6 @ 6"
C	12"	#7 @ BOT	14"	#7 @ TOP	12"	#6 @ 6"
D	14"	#7 @ BOT	16"	#7 @ TOP	12"	#7 @ 6"
E	16"	#7 @ BOT	16"	#7 @ TOP	12"	#7 @ 6"

(SS) INDICATES SHORT SPAN IN MANHOLE.
 ALL STEEL NOT DESIGNATED SHALL
 BE #5 @ 12".



SECTION C-C



PLAN



Handwritten signature and initials

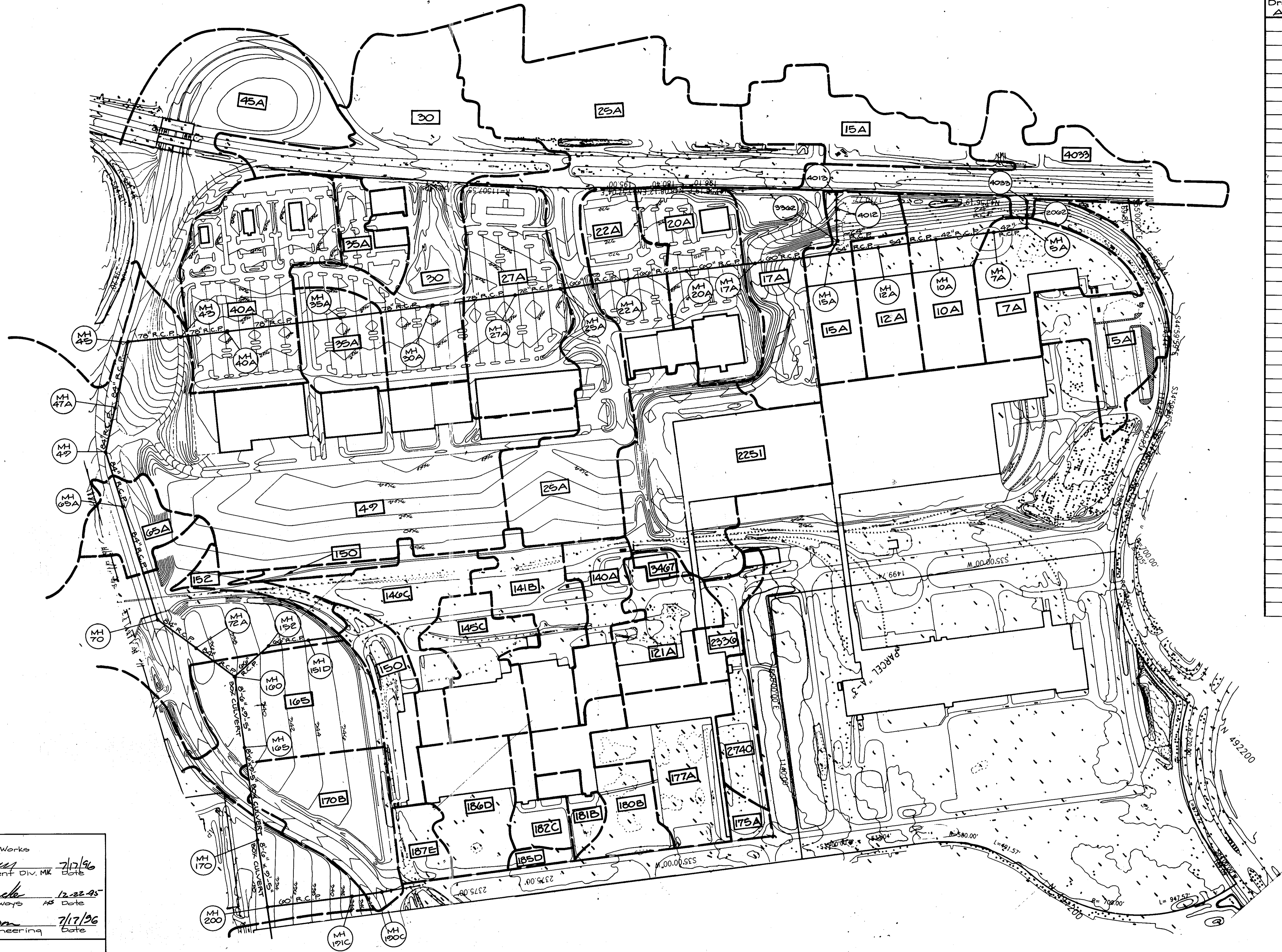
APPROVED	DEPARTMENT OF PUBLIC WORKS	
<i>Handwritten signature</i>	CHIEF, LAND DEVELOPMENT DIVISION MK	7/17/96 DATE
<i>Handwritten signature</i>	CHIEF, BUREAU OF HIGHWAYS	12-22-95 DATE
APPROVED	DEPARTMENT OF PUBLIC WORKS	
<i>Handwritten signature</i>	CHIEF, BUREAU OF ENGINEERING	7/17/96 DATE
APPROVED	OFFICE OF PLANNING AND ZONING	
<i>Handwritten signature</i>	CHIEF, DIVISION OF LAND DEVELOPMENT and Research	8/2/96 DATE
Gateway Commerce Center SIXTH ELECTION DISTRICT HOWARD COUNTY, MARYLAND		
STORM DRAINS PLAN AND PROFILE		
OWNER AND DEVELOPER HOWARD RESEARCH AND DEVELOPMENT CO., INC. 10275 LITTLE PATUXENT PARKWAY COLUMBIA, MARYLAND 21044		
* NO SCALE	DATE: Dec, 1993	DWG. NO. 4 OF 5
DES. _____	DRN. _____	CHK. M. J. T.

GUTSCHICK, LITTLE & WEBER, P.A.
 CIVIL ENGINEERS, SURVEYORS, PLANNERS &
 LANDSCAPE ARCHITECTS
 3909 NATIONAL DRIVE SUITE 250
 BURTONTOWN OFFICE PARK BURTONTOWN, MD 20884

1158

666-2531

Drainage Area	"C"	Acreage
5A	0.27	6.06
7A	0.51	5.51
10A	0.51	4.71
12A	0.62	3.30
15A	0.45	10.48
17A	0.24	5.15
20A	0.65	7.94
22A	0.48	10.21
25A	0.59	28.63
27A	0.56	8.37
30	0.43	16.36
35A	0.56	6.12
40A	0.52	10.99
45A	0.27	16.10
47A	0.12	0.40
49	0.53	62.92
65A	0.28	3.70
72A	0.50	27.99
121A	0.43	4.13
165A	0.51	57.08
170B	0.44	7.14
175A	0.27	0.78
177A	0.46	6.05
180B	0.39	4.29
181B	0.40	1.17
182C	0.34	1.96
185D	0.22	0.49
186D	0.38	4.69
187E	0.22	1.71
200	0.45	8.23
2251	0.58	8.50
2336	0.46	1.91
2740	0.21	2.00
3467	0.52	0.36
4033	0.26	8.04
4013	0.45	5.85
140	0.39	3.89
141B	0.37	5.17
145C	0.39	4.64
146C	0.23	5.28
150	0.32	4.44
152	0.19	1.65

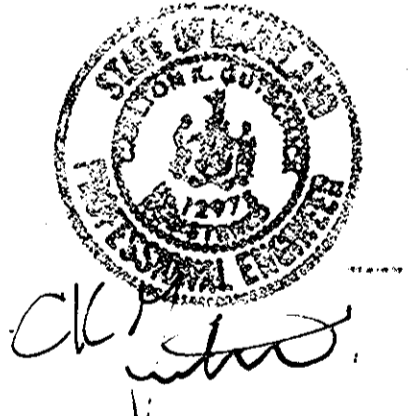


Approved
 Department of Public Works
John V. ... 7/17/96
 Chief, Land Development Div. MK Date

Andrew M. ... 12-22-95
 Chief, Bureau of Highways HS Date

John J. ... 7/17/96
 Chief, Bureau of Engineering Date

Approved
 Department of Planning and Zoning
Anna ... 8/12/96
 Chief, Division of Land Development and Research Date



GLW GUTSCHICK LITTLE & WEBER, P.A.
 CIVIL ENGINEERS, SURVEYORS, PLANNERS, LANDSCAPE ARCHITECTS
 3909 NATIONAL DRIVE - SUITE 250 · BURTONSVILLE OFFICE PARK · BURTONSVILLE, MD. 20886
 TELEPHONE: (301)421-4024 NO.VA. (301)989-2524 BALTO. (301)880-1820 FAX (301)421-4186

DATE	REVISION	BY	APP'R.

PREPARED FOR:
 Howard Research &
 Development Corporation
 10275 Little Patuxent Parkway
 Columbia, Maryland 21044
 410-392-6027

DRAINAGE AREA MAP
 Phase III Storm Drain Dedication
Gateway Commerce Center
 Sixth Election District
 Howard County, Maryland

DES.:	SCALE	ZONING	G.L.W. FILE No.
DRN.:	1" = 200'		91-055
W.S.J.	DATE	TAX MAP No.	SHEET
CHK.:	December, 1993	42	5 OF 5

1158

F-92-999