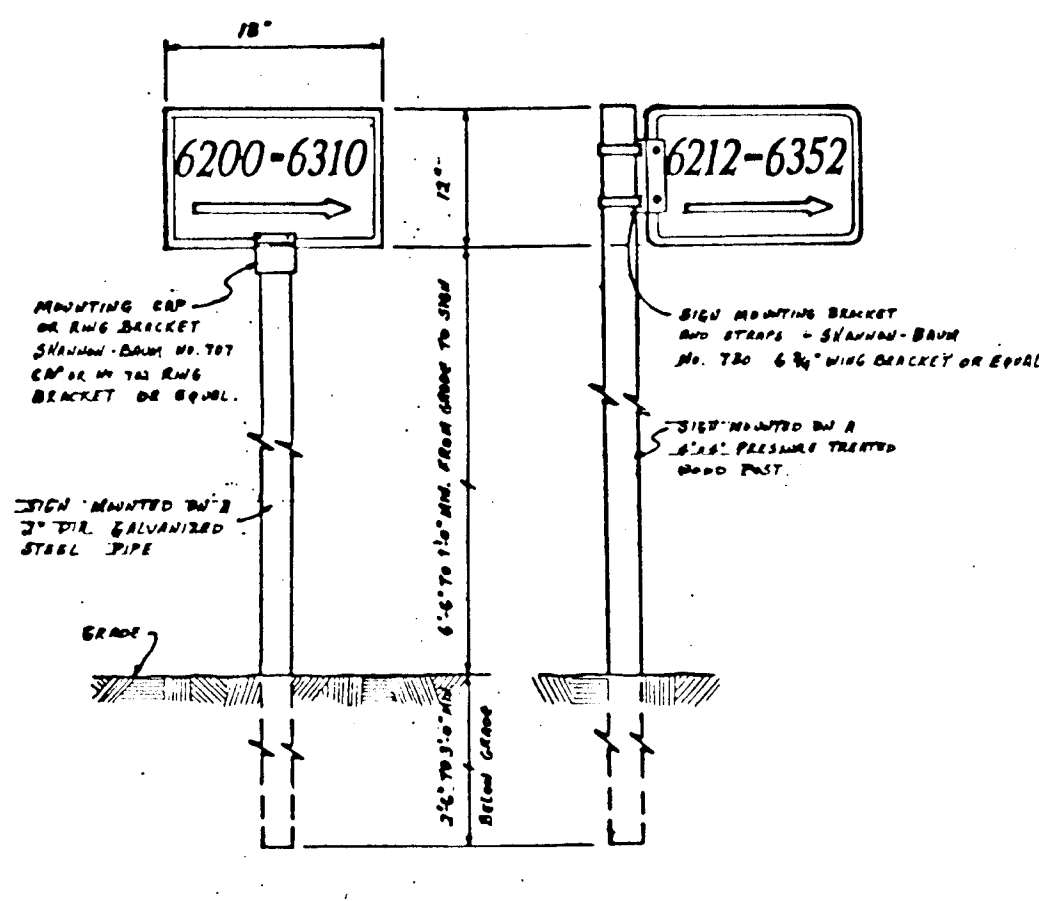
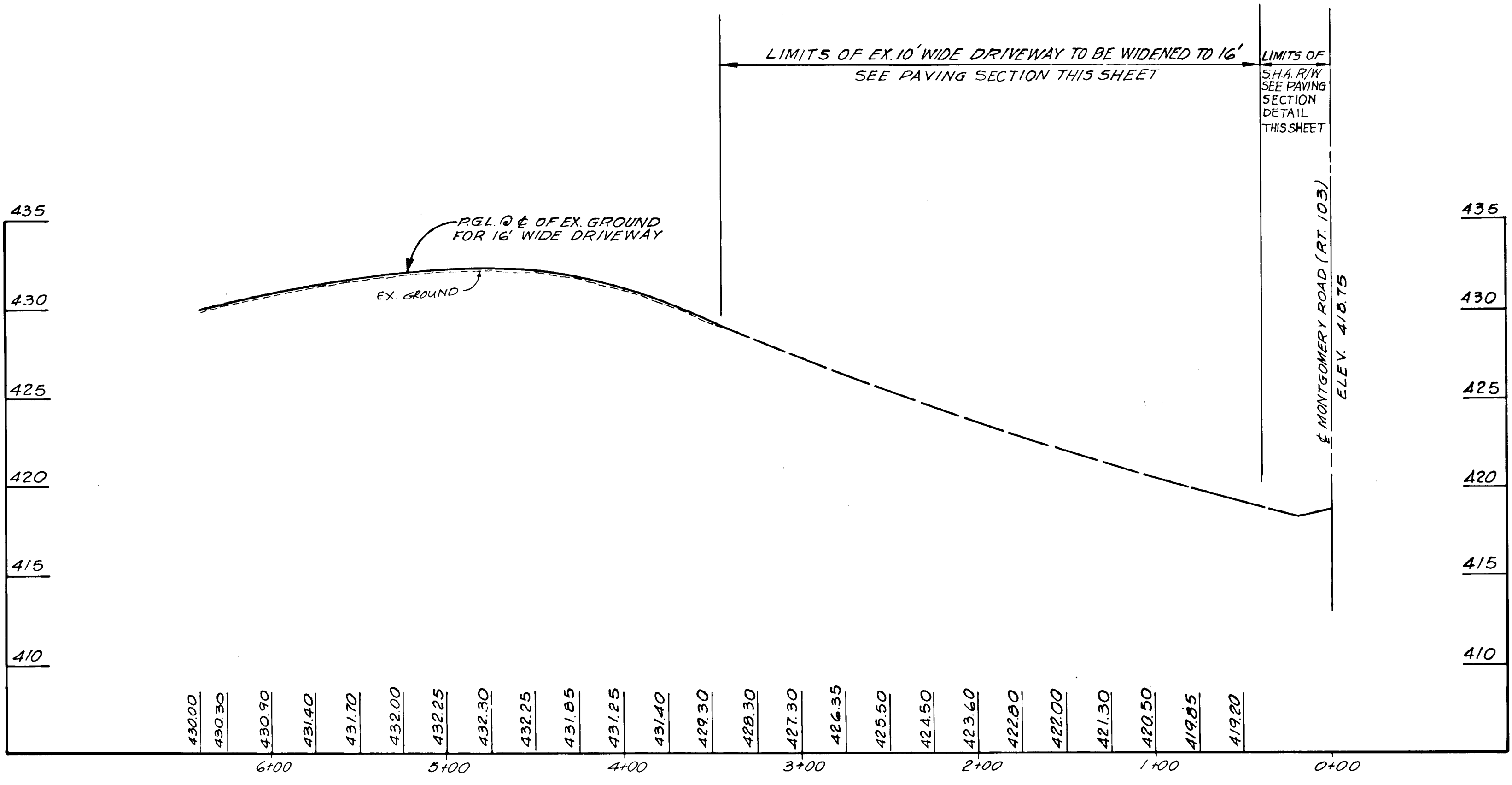
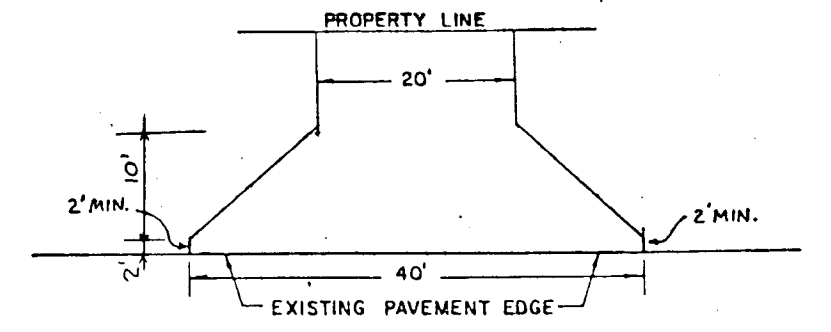
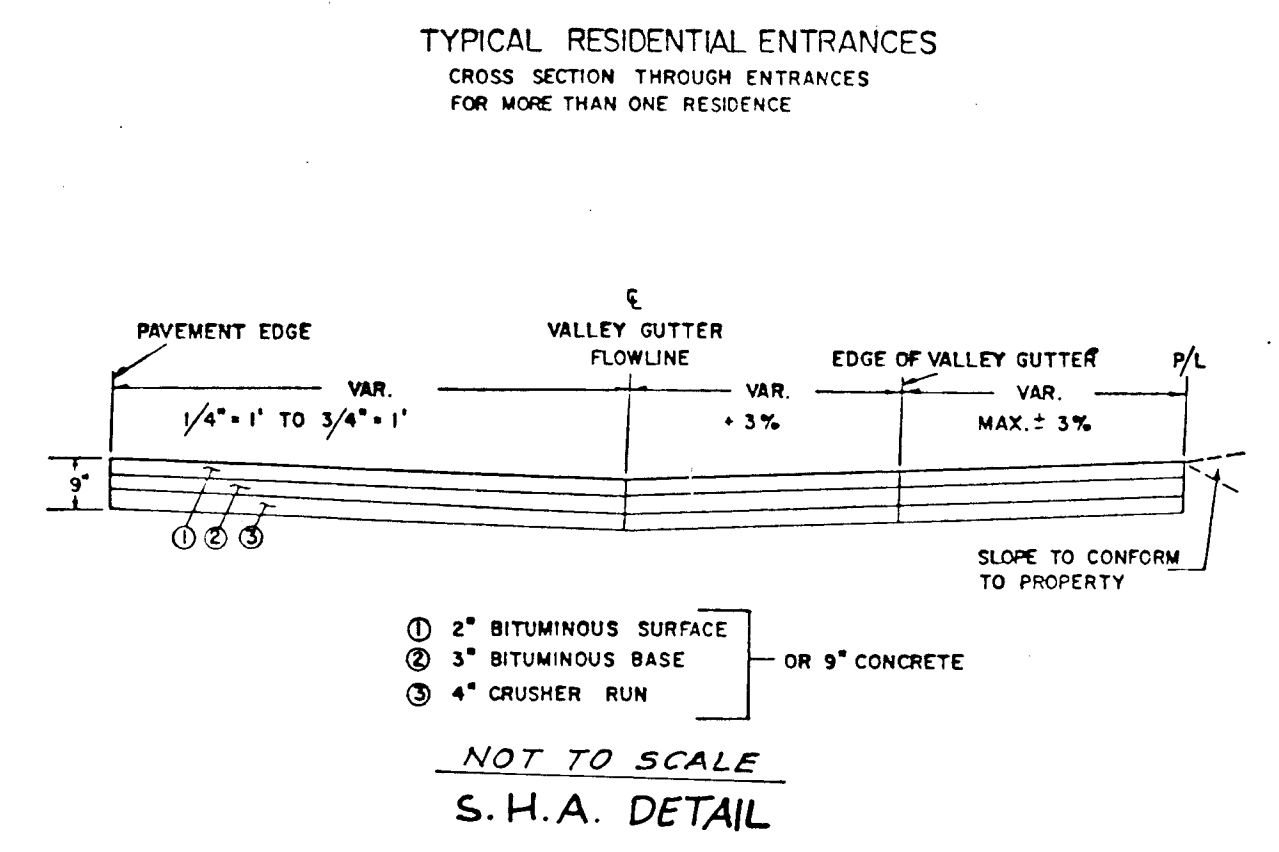


PROCEDURES FOR HOUSE NUMBER DIRECTIONAL SIGNS
 DIVISION OF LAND DEVELOPMENT AND ZONING ADMINISTRATION
 OFFICE OF PLANNING AND ZONING
 HOWARD COUNTY, MD
 EFFECTIVE MARCH 20, 1985

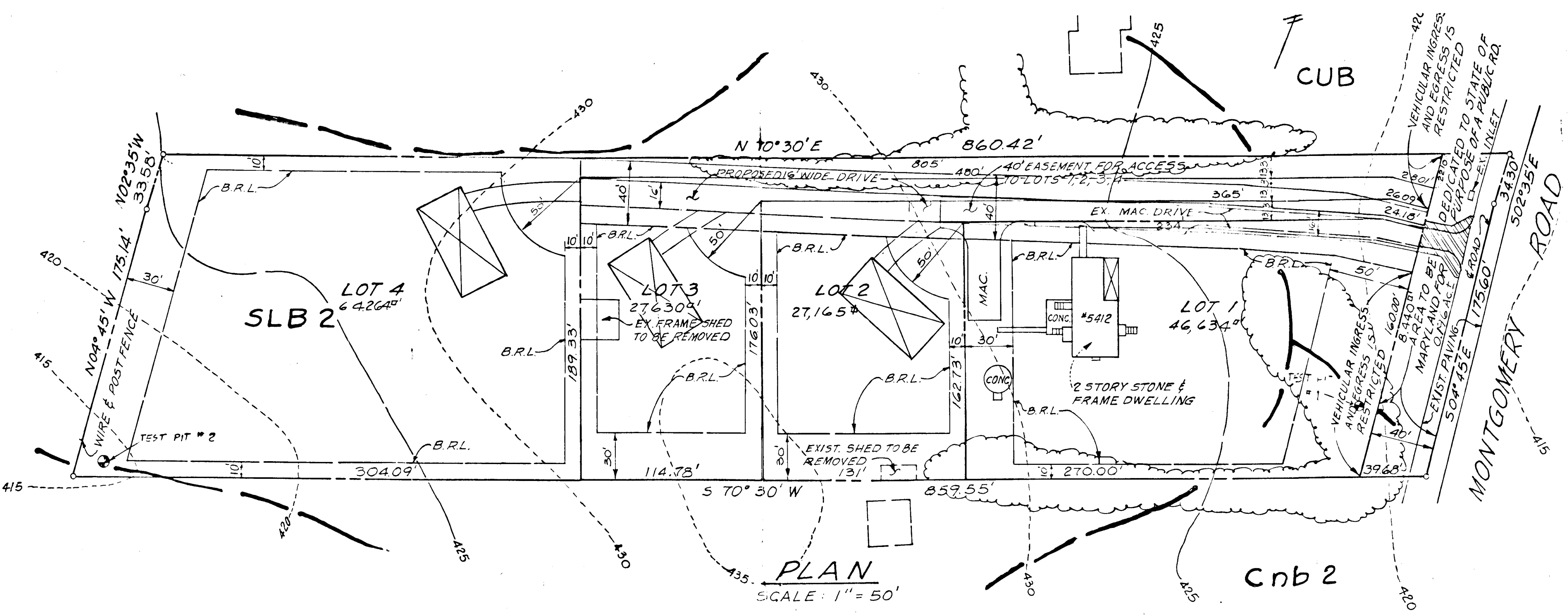
In accordance with Section 16.117 of the Subdivision and Land Development Regulations of Howard County and Section 3.589(a) of the Howard County Code (Public Signs) these specifications are hereby established to guide the installation of house number directional signs for commercial, industrial, multifamily, mobile home and private access residential developments.



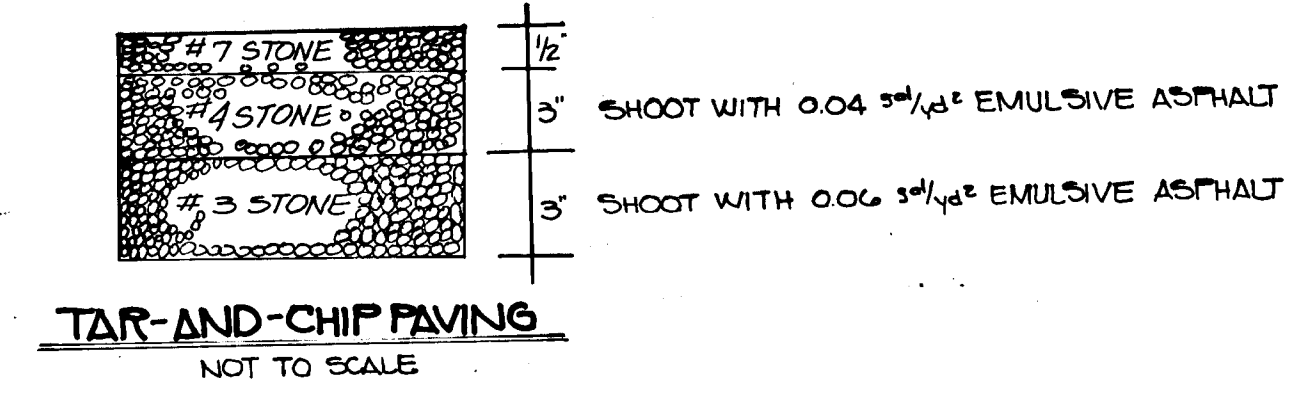
Sign Option Number 1 and Number 2
Sign Design and Installation Detail
 1/4" SCALE



PROFILE
 1" = 50' HOR.
 1" = 5' VERT.



PLAN
 SCALE: 1" = 50'



APPROVED: HOWARD COUNTY DEPARTMENT OF PUBLIC WORKS
 10/30/90
 Chief, Bureau of Engineering
 11-1-90
 Date



OWNER AND DEVELOPER
 DENNIS A. HODGE
 5412 MONTGOMERY ROAD
 ELLICOTT CITY, MARYLAND 21043

10/30/90
 DATE

REVISION: ADDED TAR-AND-CHIP DETAIL, REMOVED PAVING SEC. P.1. BY J.S. 4-2-91

HODGE PROPERTY
 LOTS 1-4
 2ND ELECTION DISTRICT
 HOWARD COUNTY MARYLAND
 TAX MAP 31 PARCEL 193
 SCALE 1" = 50' DATE JUNE 7, 1990

1600

FISHER, COLLINS & CARTER, INC.
 CIVIL ENGINEERS, CONSULTANTS & LAND SURVEYORS
 SUITE 100, 9171 BALTIMORE NATIONAL PIKE
 ELLICOTT CITY, MARYLAND 21043
 (301) 461-2855