

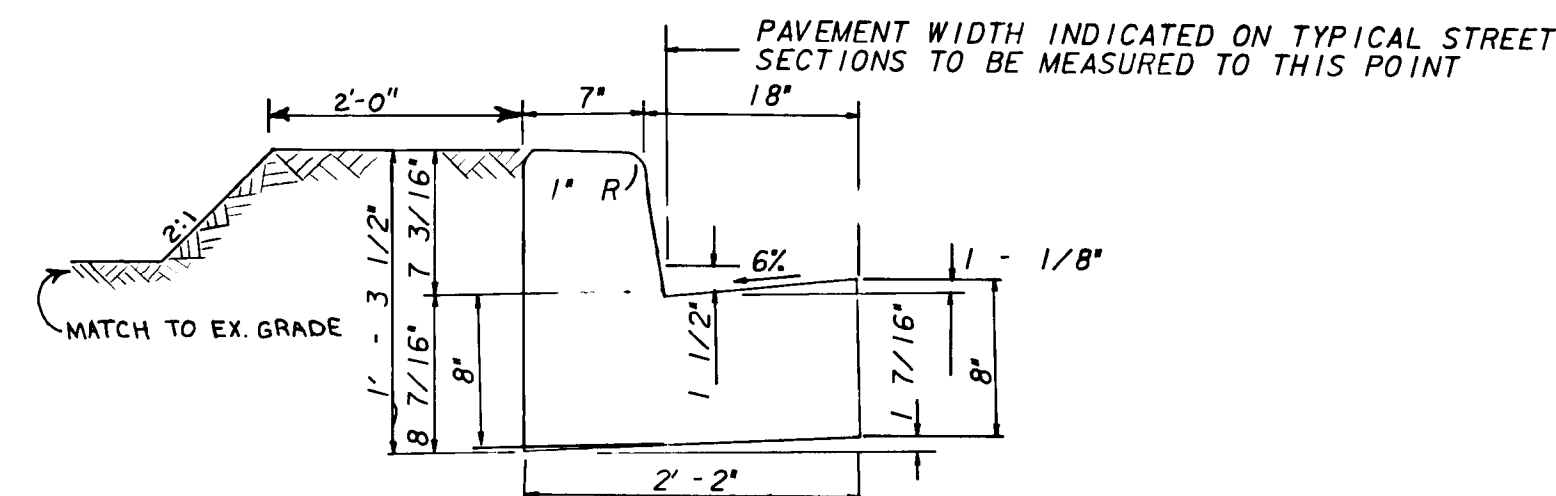
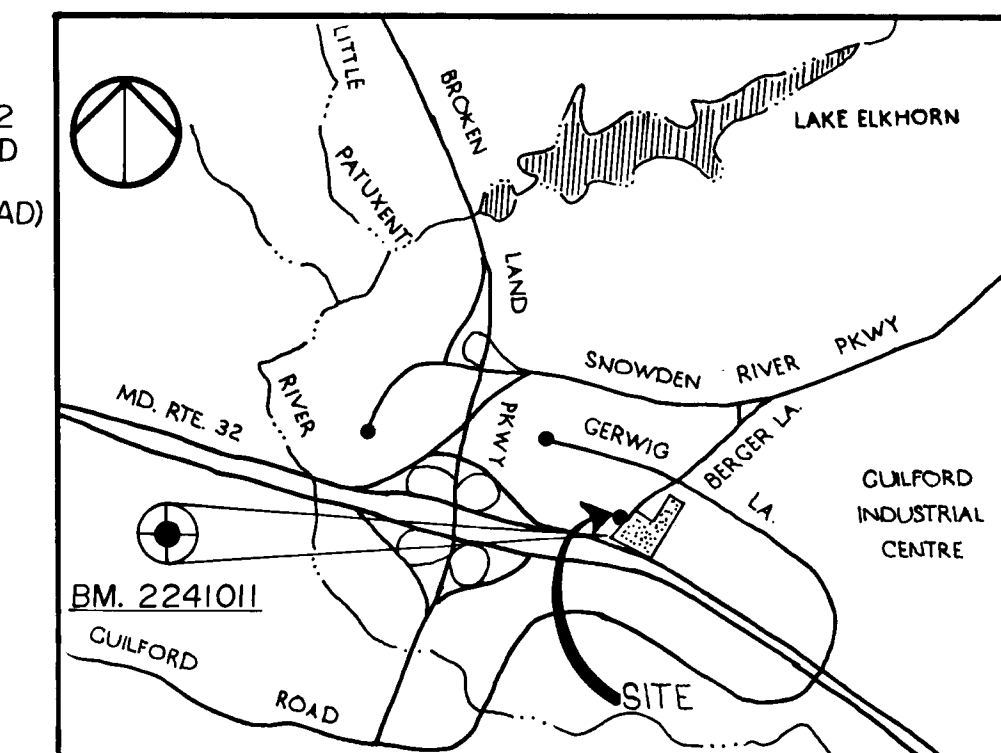
GENERAL NOTES

1. THIS DRAWING IS ONLY TO BE USED FOR BERGER ROAD CUL-DE-SAC IMPROVEMENT.
2. THE CUL-DE-SAC IS A VARIANCE TO HOWARD COUNTY STANDARD R-5.03 AND WAS APPROVED BY THE DEPARTMENT OF PUBLIC WORKS ON APRIL 5, 1990.
3. FULL DEPTH PAVING (SECTION P-3), STANDARD R-2.01) SHALL BE REQUIRED AS INDICATED ON THIS PLAN.
4. RESURFACING OF EXISTING PAVEMENT IN CUL-DE-SAC WILL BE NECESSARY TO MAINTAIN POSITIVE DRAINAGE.
5. EXISTING WATER VALVE (CONTINUED NO. 44-1901-D) SHALL BE ADJUSTED TO PAVING ELEVATION.
6. REMOVE EXISTING CURB WHERE SHOWN AND SAW-CUT EXISTING PAVEMENT TO PROVIDE A CLEAN JOINT.
7. WHERE NEW CURB CROSSES EXISTING PAVEMENT PROVIDE (2) TWO FEET OF BACKING WITH SOIL, THEN 2:1 TO GRADE (SEE DETAIL).
8. THE CONTRACTOR OR DEVELOPER SHALL CONTACT THE CONSTRUCTION INSPECTION DIVISION, 24 HOURS IN ADVANCE OF COMMENCEMENT OF WORK, AT 792-7272.

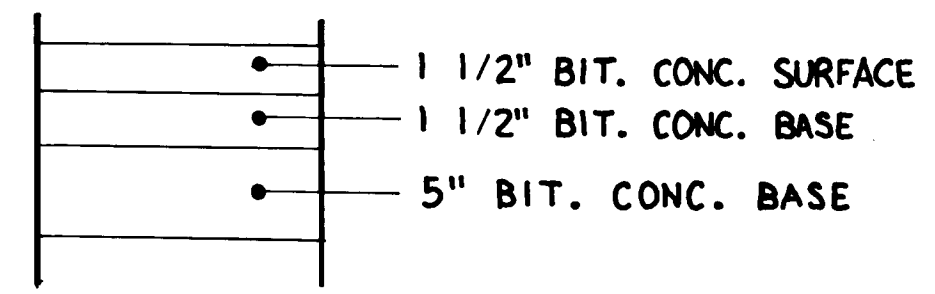
CURB COORDINATES		
	NORTHING	EASTING
P.C. STA. 1+07	487640.59	843756.13
P.T. STA. 2+48.02	487566.80	843813.98
END STA. 3+58.15	487628.46	843905.22

CURVE DATA						
No.	Radius	Delta	Arc	Tan.	Chord	Chord Bearing
G-1	47.00	171°54'40"	111.02	644.73	93.77	S 58°05'40" E

BM 2241011 ELEVATION 314.005
 NORTHING 48699406 EASTING 84310962
 CONC. MON. FLUSH WITH SURFACE LOCATED
 ON TRANSMISSION LINE NE. OF THE
 INTERSECTION OF RTE. 32 (GUILFORD ROAD)
 AND BERGER ROAD



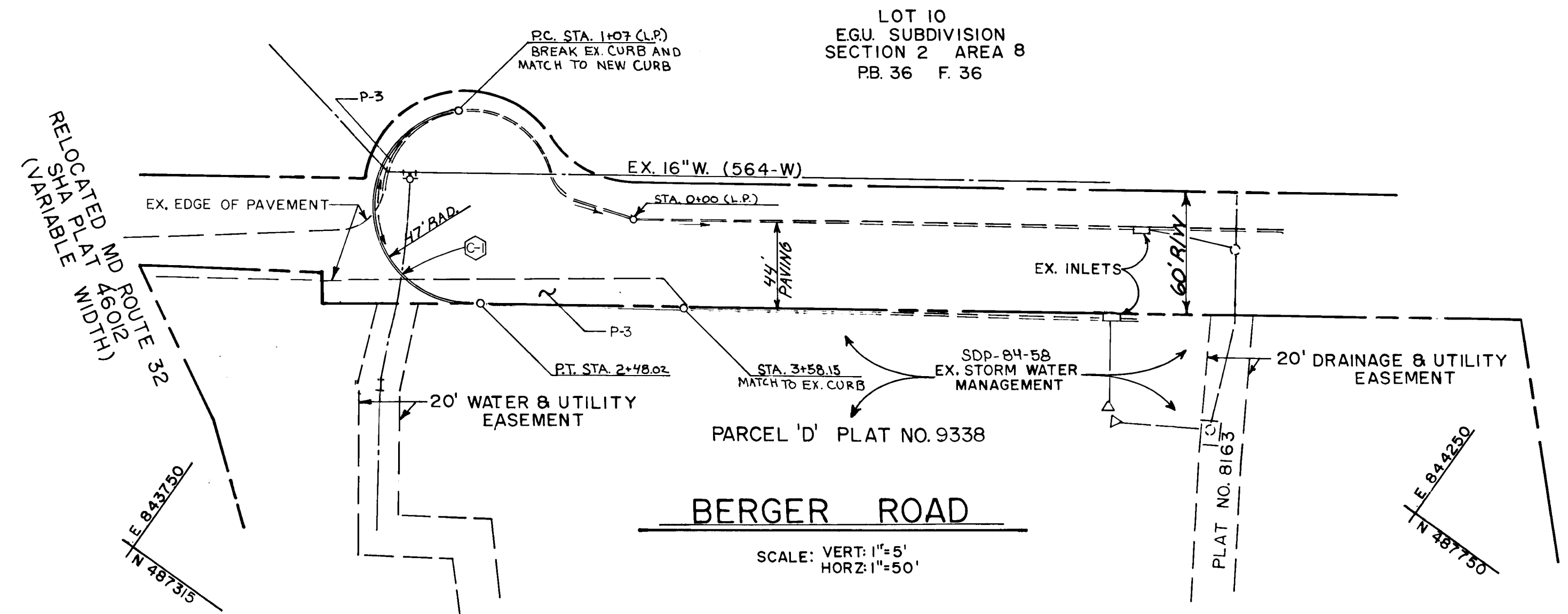
STD. 7" COMB CONC. CURB & GUTTER
 HO. CO. STD. SPECS. R. 3.01 (NOT TO SCALE)



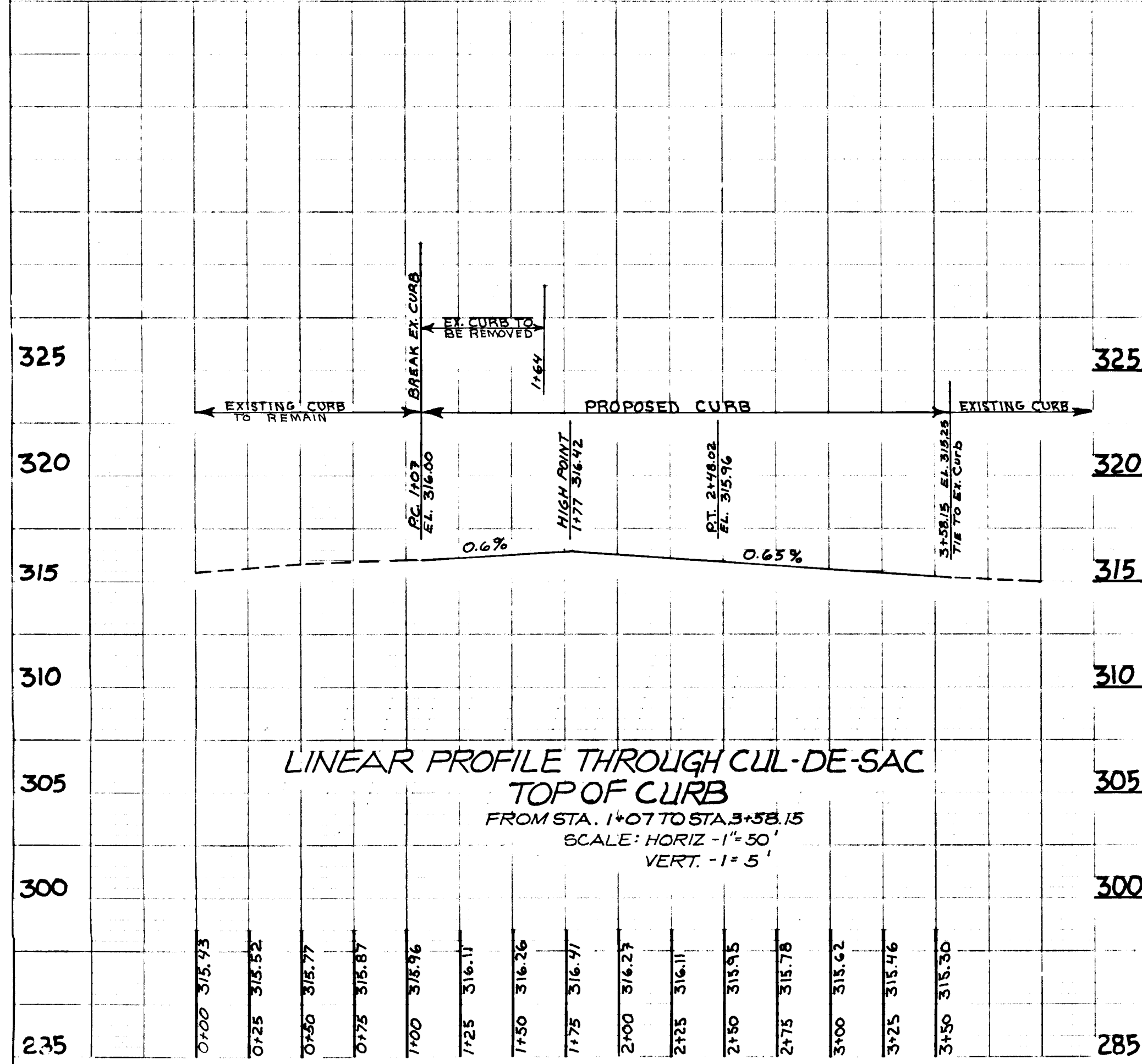
PAVING SECTION P-3

DATE: _____
 NO. _____
 SUPERVISOR: _____
 CHECKED: _____
 NOTE: SEE PLAN FOR ALL DIMENSIONS AND NOTES.

DATE: _____
 NO. _____
 SUPERVISOR: _____
 CHECKED: _____
 NOTE: SEE PLAN FOR ALL DIMENSIONS AND NOTES.



SCALE: VERT. 1"=5'
 HORZ. 1"=50'



LINEAR PROFILE THROUGH CUL-DE-SAC
 TOP OF CURB
 FROM STA. 1+07 TO STA. 3+58.15
 SCALE: HORZ. 1"=50'
 VERT. 1"=5'

VICINITY MAP
 SCALE: 1" = 2000'

John M. Senigaglia 1/7/90
 CHIEF, LAND DEVELOPMENT DIVISION DATE

Brenville W. Welland 7/31/90
 CHIEF, BUREAU OF HIGHWAYS DATE

Robert E. Kline 9-8-90
 CHIEF, BUREAU OF ENGINEERING DATE

APPROVED: HOWARD COUNTY DEPT. OF PLANNING AND ZONING
Robert J. ... 2/24/91
 CHIEF, DIV. OF COMMUNITY PLANNING AND LAND DEVELOPMENT DATE

THE VAULT - COLUMBIA
 E.G.U. SECTION 2 AREA 8 PARCEL D
 6 ELECTION DISTRICT HOWARD COUNTY, MARYLAND

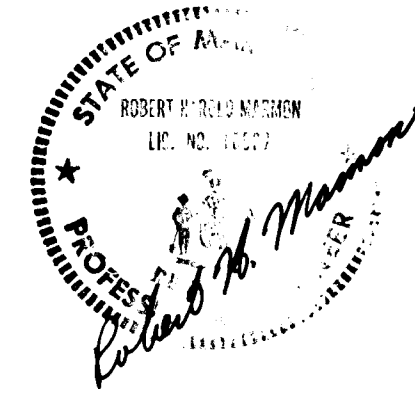
OWNER / DEVELOPER
 CHESAPEAKE RESOURCES, INC.
 12030 PARKLAWN DRIVE
 ROCKVILLE, MD. 20850

GREENHORNE AND O'MARA, INC.
 ENGINEERS, ARCHITECTS, PLANNERS, SURVEYORS
 113 WEST ROAD, SUITE 208
 TOWSON, MARYLAND 21204
 (301) 296-4100

REFERENCE DRAWINGS:
 F-90-31
 SDP-89-257, SDP-84-58

TITLE
**PLAN AND PROFILE
 BERGER ROAD CUL-DE-SAC IMPROVEMENTS**

DESIGNED BY: K.A.M.	SCALE: AS SHOWN	PROJECT NO.
DRAWN BY: K.A.M.	DATE: APRIL 1990	DRAWING NO.
CHECKED BY: K.H.M.	APPROVED:	1 OF 2



1568