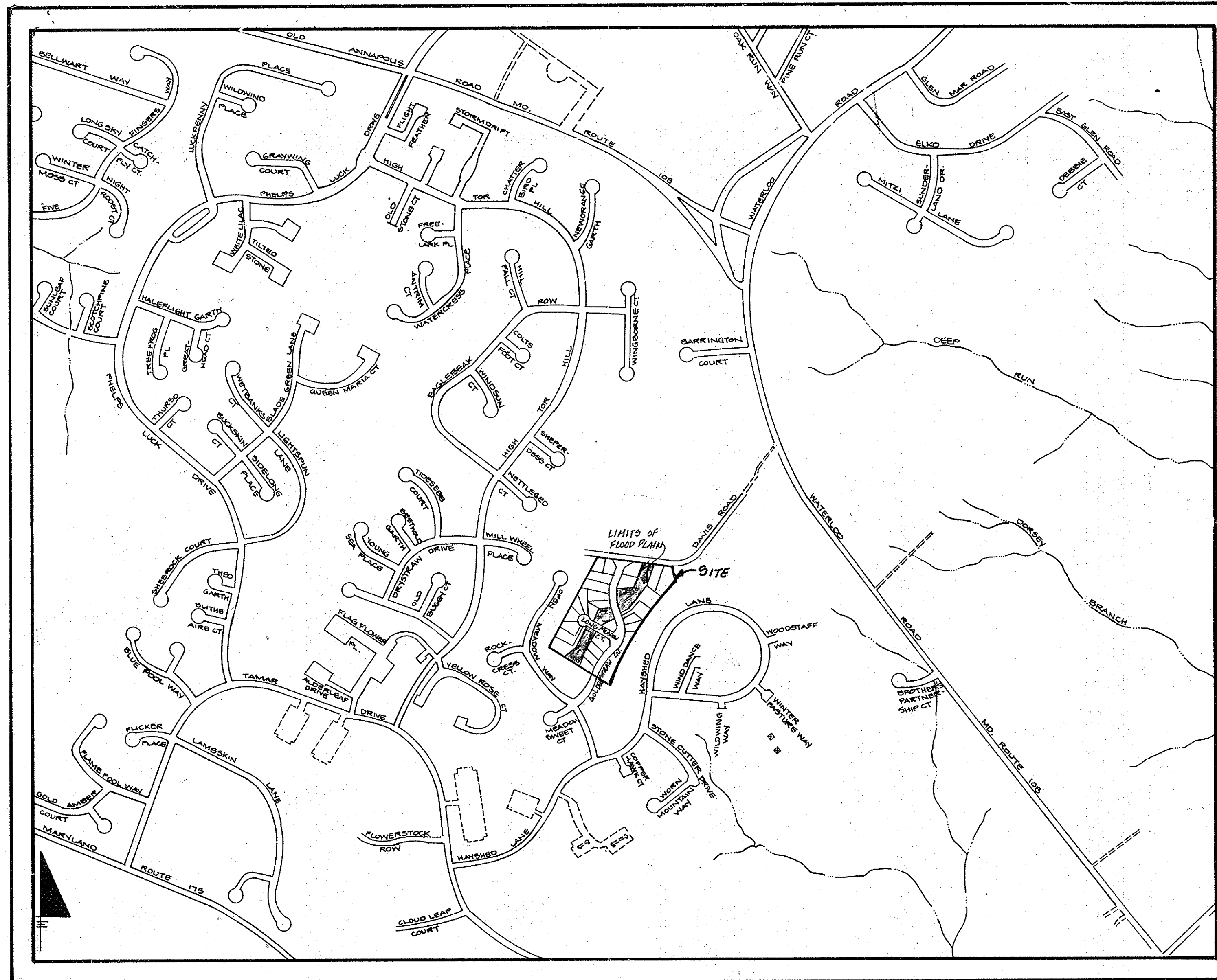


INDEX OF SHEETS	
SHEET NO.	TITLE
1	TITLE SHEET
2	PLAN AND PROFILE - DAVIS ROAD
3	PLAN AND PROFILE - GOLDENSTRAW LANE
4	PLAN AND PROFILE - LONG MEADOW CT
5	DRAINAGE AREA MAP, S.W.M. PLAN, GRADING AND SEDIMENT CONTROL PLAN
6	S.W.M. PROFILES AND SEDIMENT CONTROL DETAILS
7	SECTIONS AND DETAILS



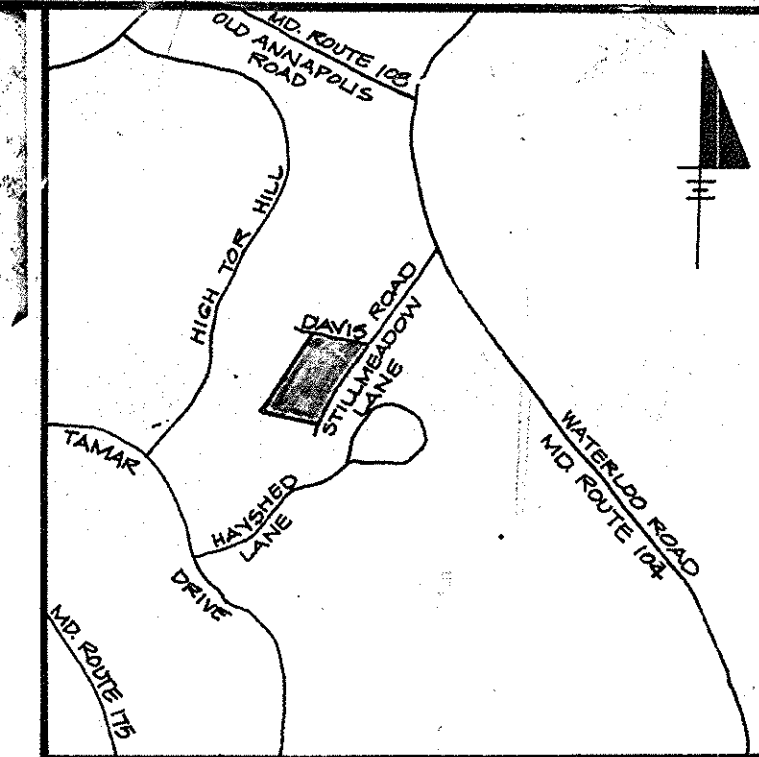
LOCATION MAP
SCALE: 1"=600'

LONG MEADOW II

ROAD CONSTRUCTION DRAWINGS 6TH ELECTION DISTRICT HOWARD COUNTY, MARYLAND

BENCH MARKS

- BM 1 = EX. FIRE HYDRANT ON NORTH SIDE OF DAVIS ROAD, EAST OF STILLMEADOW LANE INTERSECTION. ELEV. 479.32'
- BM 2 = IRON PIPE AT NORTHEAST PROPERTY CORNER. #2 ELEV. 461.97'



VICINITY MAP
SCALE: 1"=2000'

GENERAL NOTES

- ALL WORK SHALL BE DONE IN ACCORDANCE WITH HOWARD COUNTY STANDARDS, SPECIFICATIONS AND DETAILS FOR CONSTRUCTION.
- ALL UTILITY COMPANIES MUST BE NOTIFIED 24-HOURS IN ADVANCE OF ANY CONSTRUCTION.
- STORM DRAINAGE TRENCHES WITH ROAD RIGHT-OF-WAYS SHALL BE BACKFILLED AND COMPACTED IN ACCORDANCE WITH HOWARD COUNTY CODE.
- ANY DAMAGE TO PUBLIC RIGHT-OF-WAYS, PAVING, OR EXISTING UTILITIES WILL BE CORRECTED AT THE CONTRACTOR'S EXPENSE.
- CONTRACTOR TO NOTIFY THE HOWARD COUNTY INSPECTION AND SURVEY DIVISION AT LEAST 3 DAYS BEFORE STARTING WORK SHOWN ON THESE DRAWINGS TELEPHONE 792-7272.
- APPROXIMATE LOCATION OF EXISTING UTILITIES ARE SHOWN FOR THE CONTRACTOR'S INFORMATION. CONTRACTOR SHALL LOCATE EXISTING UTILITIES WELL IN ADVANCE OF CONSTRUCTION ACTIVITIES AND TAKE ALL NECESSARY PRECAUTIONS TO PROTECT THE EXISTING UTILITIES AND MAINTAIN UNINTERRUPTED SERVICE.
- ALL TRAFFIC CONTROL DEVICES SHALL BE INSTALLED IN ACCORDANCE WITH THE MANUAL OF UNIFORM TRAFFIC CONTROL DEVICES, 1984 REVISED EDITION.
- STREET TREES TO BE PROVIDED AS REQUIRED BY SECTION 16.131 OF THE HOWARD COUNTY SUBDIVISION AND LAND DEVELOPMENT REGULATIONS.
- CONTRACTOR SHALL NOTIFY THE FOLLOWING UTILITIES OR AGENCIES AT LEAST FIVE (5) WORKING DAYS BEFORE STARTING WORK SHOWN ON THESE PLANS.
 - STATE HIGHWAY ADMINISTRATION 531-5533
 - BALTIMORE GAS & ELECTRIC-UNDERGROUND ELECTRIC DISTRIBUTION CUSTOMER SERVICE 685-0123
 - ENGINEERING-DAMAGE CONTROL 234-5611
 - MISS UTILITY 1-559-0100
 - CHESAPEAKE & POTOMAC (C&P) TELEPHONE COMPANY 725-9976
 - AMERICAN TELEPHONE & TELEGRAPH - CABLE LOCATION DIVISION 393-3533
 - COLONIAL PIPELINE COMPANY 795-1390
 - BUREAU OF UTILITIES - HOWARD COUNTY 992-2366

LANDSCAPE SCHEDULE				
SYMBOL	QUANTITY	NAME	SIZE	REMARKS
	70	ACER SACCHARUM (SUGAR MAPLE)	2 1/2" CAL (MIN.)	BALLED AND BURLAPPED
	-	CRATAEGUS PHILAENOPYRUM (WASHINGTON Hawthorn)	2 1/2" CAL (MIN.)	BALLED AND BURLAPPED

NOTE: 10/22/15 CAPITAL PROJECT D-1159 POND LOT 29 DECOMMISSION THE POND BY REMOVING THE CMP ANTI-VORTEX DEVICE CONTROL STRUCTURE AND 54" CMP. ALSO REDUCE THE EMBANKMENT HEIGHT CREATING A SHALLOW WETLAND AND ADDED MULTIPLE RIFFLES AND PLUNGE POOLS ALONG WITH ONE CASCADE.

() By the Engineer:
I certify that this plan for pond construction, erosion and sediment control represents a practical and workable plan based on my personal knowledge of the site conditions. This plan was prepared in accordance with the requirements of the Howard Soil Conservation District. I have notified the developer that he must provide the Howard Soil Conservation District with an "as-built" plan of the pond within 30 days of completion.

[Signature] 7/12/89
DATE

() By the Developer:
I certify that all development and/or construction will be done according to these plans, and that any responsible personnel involved in the construction project will have a Certificate of Attendance at a Department of Natural Resources Approved Training Program for the Control of Sediment and Erosion before beginning the project. I will provide the Howard Soil Conservation District with an "as-built" plan of the pond within 30 days of completion. I also authorize periodic onsite inspections by the Howard Soil Conservation District.

[Signature] 7-3-89
DATE

() These plans have been reviewed for the Howard Soil Conservation District and meet the technical requirements for small pond construction, soil erosion and sediment control.

[Signature] 7/14/89
DATE

() These plans for small pond construction, soil erosion and sediment control meet the requirements of the Howard Soil Conservation District.

[Signature] 7/14/89
DATE

APPROVED: HOWARD COUNTY DEPARTMENT OF PUBLIC WORKS

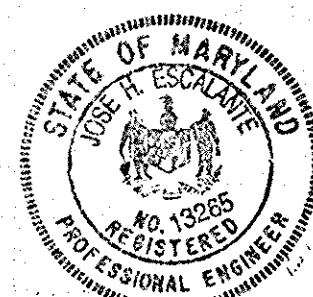
[Signature] 2/18/89
DATE

[Signature] 9/13/89
DATE

[Signature] 9-15-89
DATE

APPROVED HOWARD COUNTY DEPT. OF PLANNING AND ZONING

[Signature] 9/13/89
DATE



DESIGNED		DATE		BY		DESCRIPTION	
DESIGNED	P.T.	11/88					
DATE							
DRAWN	K.F.	11/88					
DATE							
CHECKED	J.E.	11/88					
DATE							
APPROVED	T.W.	11/88					
DATE							

Dewberry & Davis
ARCHITECTS - ENGINEERS - PLANNERS - SURVEYORS
3300 N. RIDGE ROAD SUITE 100
ELLCOTT CITY, MD. 21043
(301) 461-7478



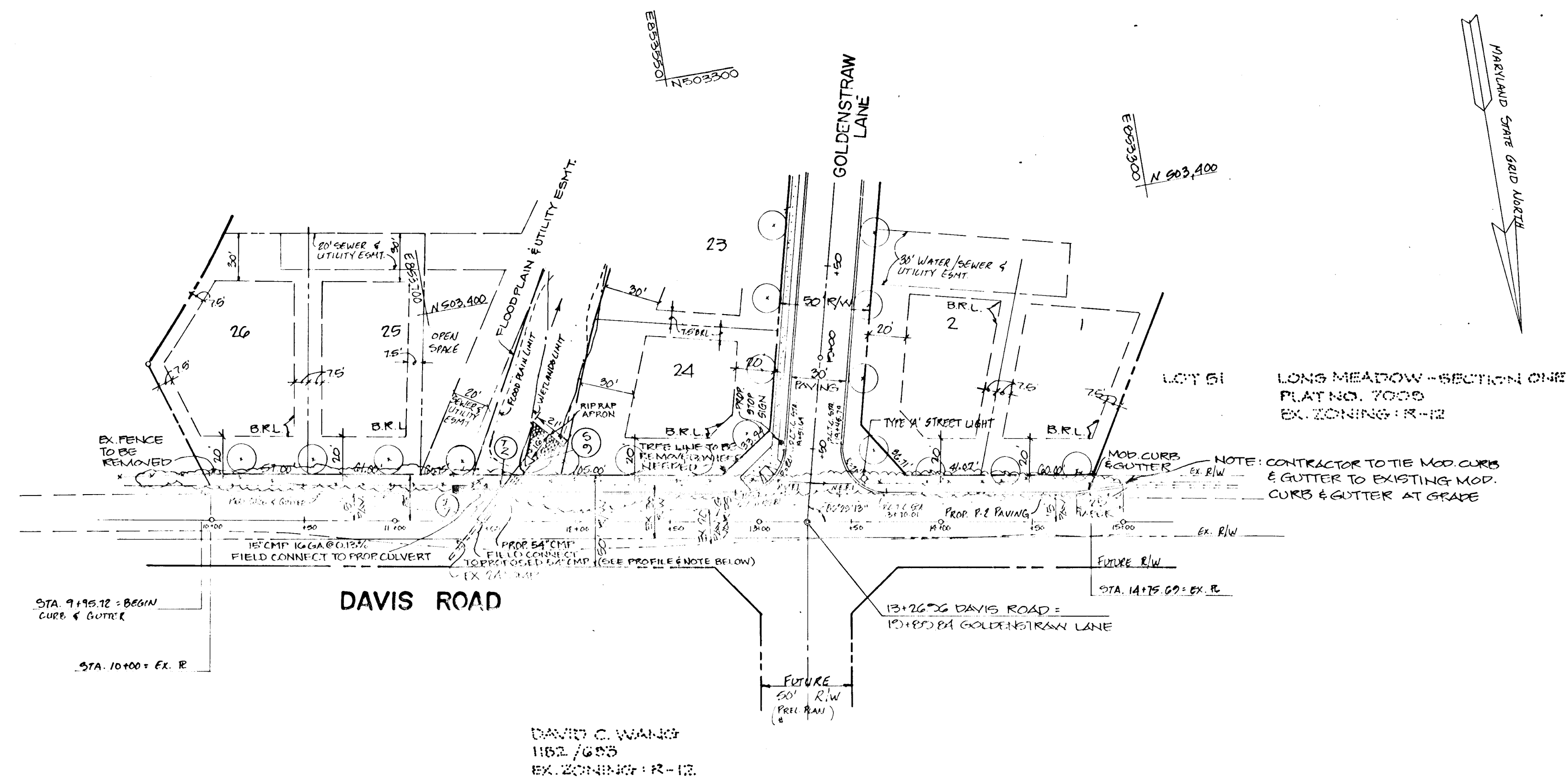
OWNER/DEVELOPER
LONG MEADOW VENTURERS
7050 OAKLAND MILLS ROAD
COLUMBIA, MARYLAND 21046

TITLE SHEET
LONG MEADOW II
LOTS 1 THRU LOTS 30
TAX MAP 36 PARCEL 264
6TH ELECTION DISTRICT
HOWARD COUNTY, MARYLAND

1236

PLAN
 DATE: 7/13/89
 DRAWN BY: C.L.D.
 CHECKED BY: J.H.E.

DEPT. OF PLANNING AND ZONING
Mark A. Z. Langell 7/13/89
 CHIEF, DIVISION OF COMMUNITY PLANNING
 AND LAND DEVELOPMENT
 LS
Donald Japan 9/14/89
Frederick W. Weiland 9/13/89
William E. Reay 9-15-89



LIGHTING LEGEND
 ✦ TYPE 'A' 100 WATT HIGH PRESSURE SODIUM VAPOR LAMP MOUNTED ON A 14' HIGH PREGRESS BRONZE POLE



LONG MEADOW II
 TAX MAP 36 PARCEL 264
 6TH ELECTION DISTRICT
 HOWARD COUNTY, MARYLAND

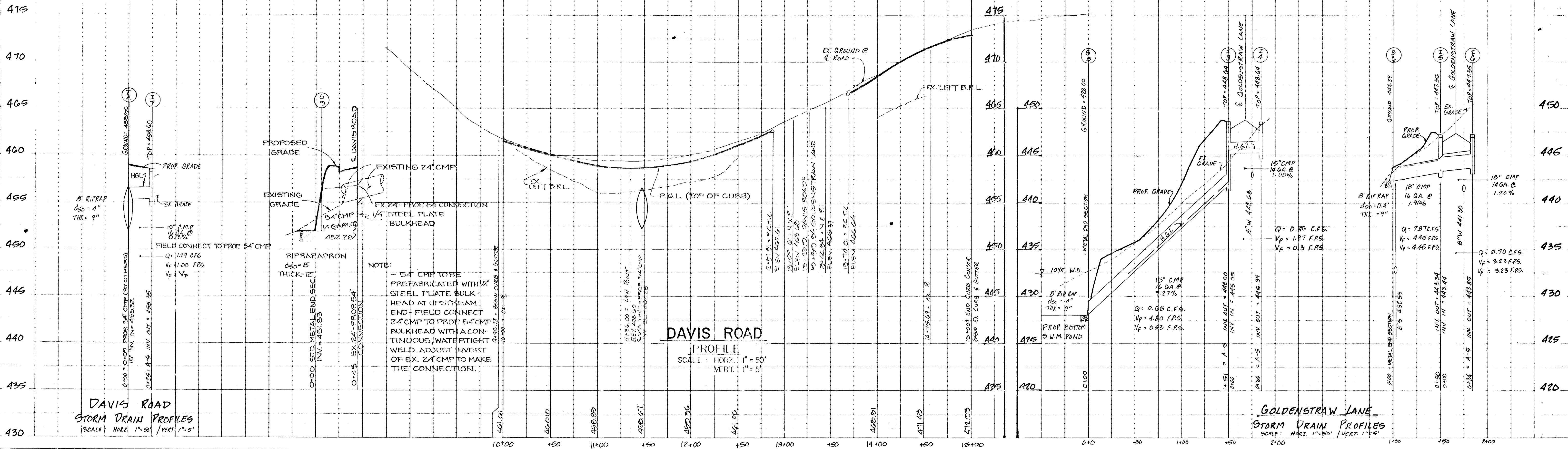
PLAN AND PROFILE
DAVIS ROAD

OWNER / DEVELOPER
 LONG MEADOW VENTURES
 7050 OKLAND MILLS RD.
 SUITE 100
 COLUMBIA, MARYLAND 21046

SCALE AS SHOWN DATE NOV. 1988 SHEET 2 OF 7
 DESIGNED BY D.T. DRAWN BY C.L.D. CHECKED BY J.H.E.

DEWEY BRY & DAVIS
 ARCHITECTS ENGINEERS - PLANNERS - SURVEYORS
 3504 NORTH RIDGE ROAD
 ELLICOTT CITY, MARYLAND 21043
 (301) 461-7478

PLAN
 1" = 50'



DAVIS ROAD
PROFILE
 SCALE: HORIZ. 1" = 50' VERT. 1" = 5'

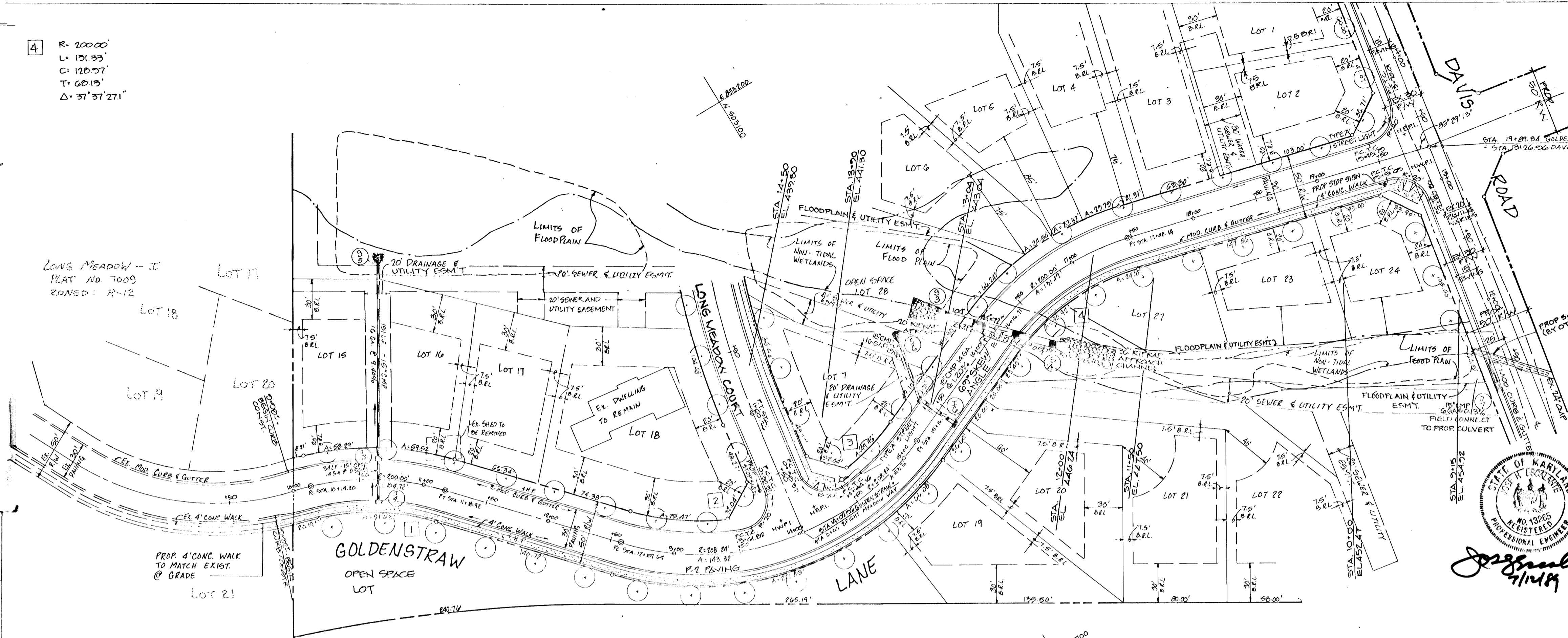
GOLDENSTRAW LANE
STORM DRAIN PROFILES
 SCALE: HORIZ. 1" = 50' VERT. 1" = 5'

1236

F-29-90

§ CURVE DATA

1	R = 100.00' L = 104.72' C = 103.93' T = 53.95' Δ = 30°00'00"	4	R = 100.00' L = 151.33' C = 120.57' T = 60.13' Δ = 37°37'27"
2	R = 200.24' L = 143.32' C = 140.60' T = 74.63' Δ = 35°29'59.1"		
3	R = 200.24' L = 113.26' C = 112.35' T = 90.34' Δ = 31°10'00.8"		



Joseph V. Ziegler 9/17/89
 CHIEF, DIVISION OF COMMUNITY PLANNING AND LAND DEVELOPMENT

Ronald J. Jenson 9/14/89

Francis W. Chelmsford 9/18/89

William E. Pugh 9-15-89

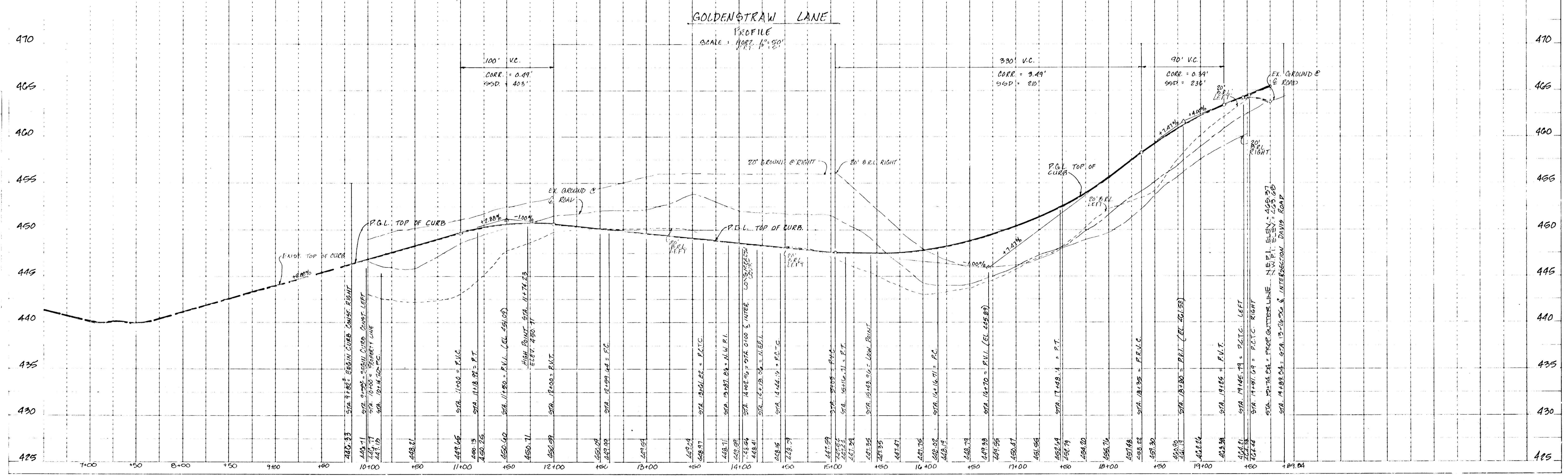
LONG MEADOW II
 TAX MAP 36 PARCEL 264
 6TH ELECTION DISTRICT
 HOWARD COUNTY, MARYLAND

PLAN AND PROFILE
GOLDENSTRAW LN.

OWNER / DEVELOPER
 LONG MEADOW VENTURERS
 SUITE 100
 OAKLAND MILLS ROAD
 COLUMBIA, MARYLAND 21046

SCALE AS SHOWN DATE NOV. 1988 SHEET 3 OF 7
 DESIGNED BY D.B.T. DRAWN BY C. DELZOPPO CHECKED BY J.H.E.

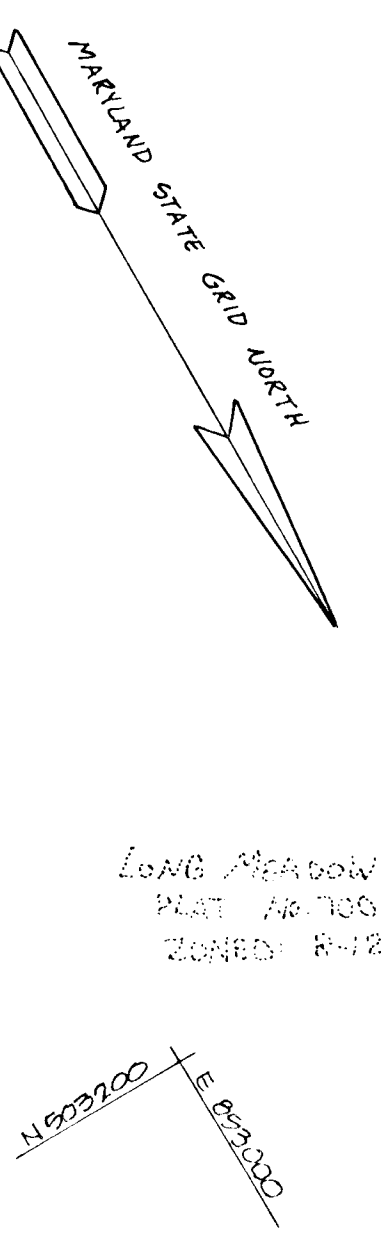
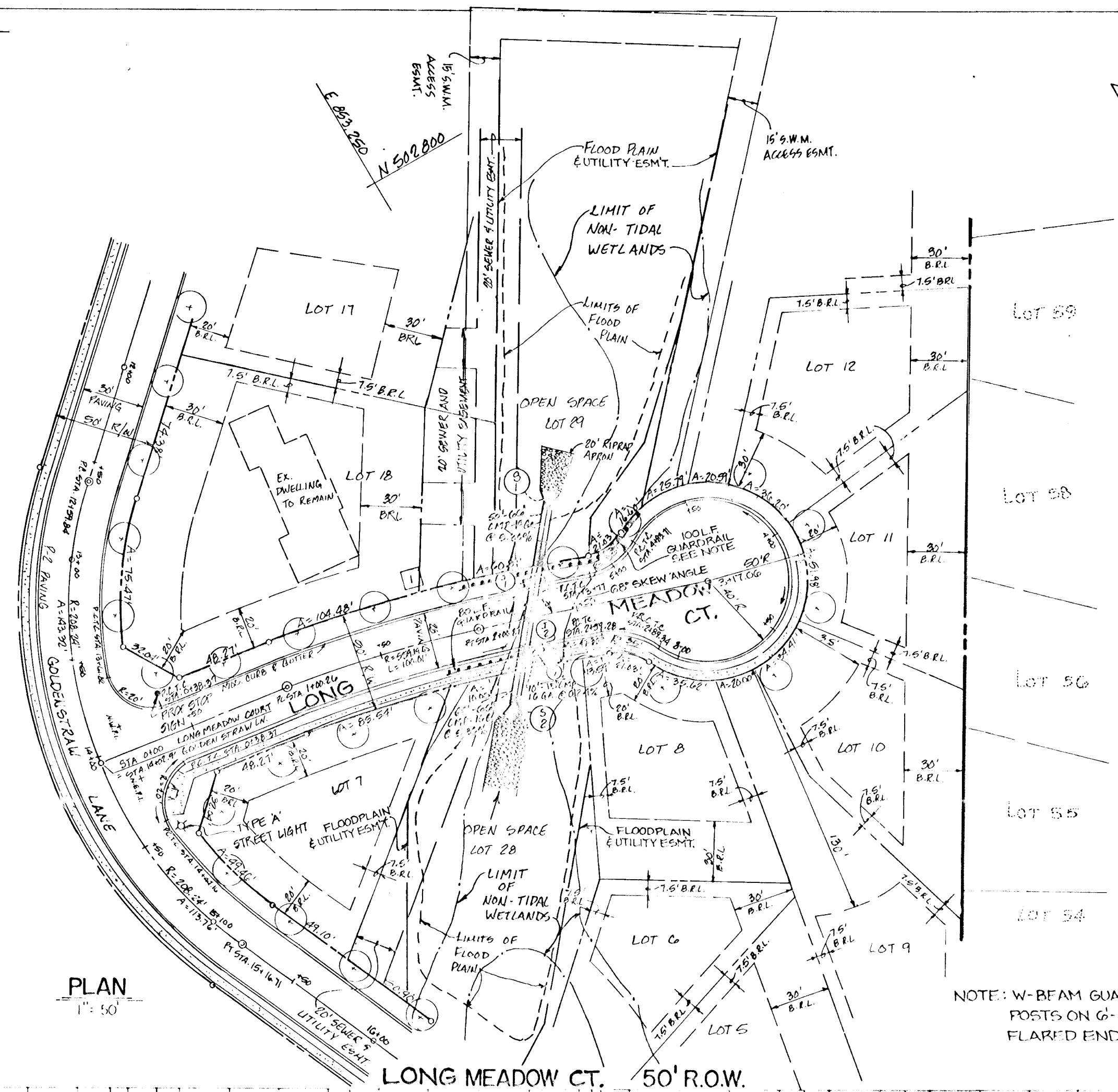
DE WETTER & DAVIS
 ARCHITECTS • ENGINEERS • PLANNERS • SURVEYORS
 3500 NORTH RIDGE ROAD
 ELLICOTT CITY, MARYLAND 21043
 (301) 451-7476



HIGHWAY FEDERAL AID DISTRICT 1
 PLATE 1-SINGLE PLAN AND PROFILE-FULL LINE
 PRINTED IN U.S.A.

F-89-90
 FOOT-EC

CURVE DATA
 R = 809.19'
 L = 100.01'
 C = 99.88'
 T = 50.14'
 Δ = 10° 14' 51.2"



PLAN SURVEYED BY DATE
 NOTE BOOK NO. CHECKED BY DATE
 NO. 27 2/24/89

DEPT. OF PLANNING AND ZONING
 Mark J. D. Langley 9/19/89
 CHIEF DIVISION OF COMMUNITY PLANNING AND LAND DEVELOPMENT
 Paul W. Spon 9/14/89
 Travis W. Walsland 9/13/89
 William E. Reidy 9-15-89



LONG MEADOW II
 TAX MAP 36 PARCEL 264
 6TH ELECTION DISTRICT
 HOWARD COUNTY, MARYLAND

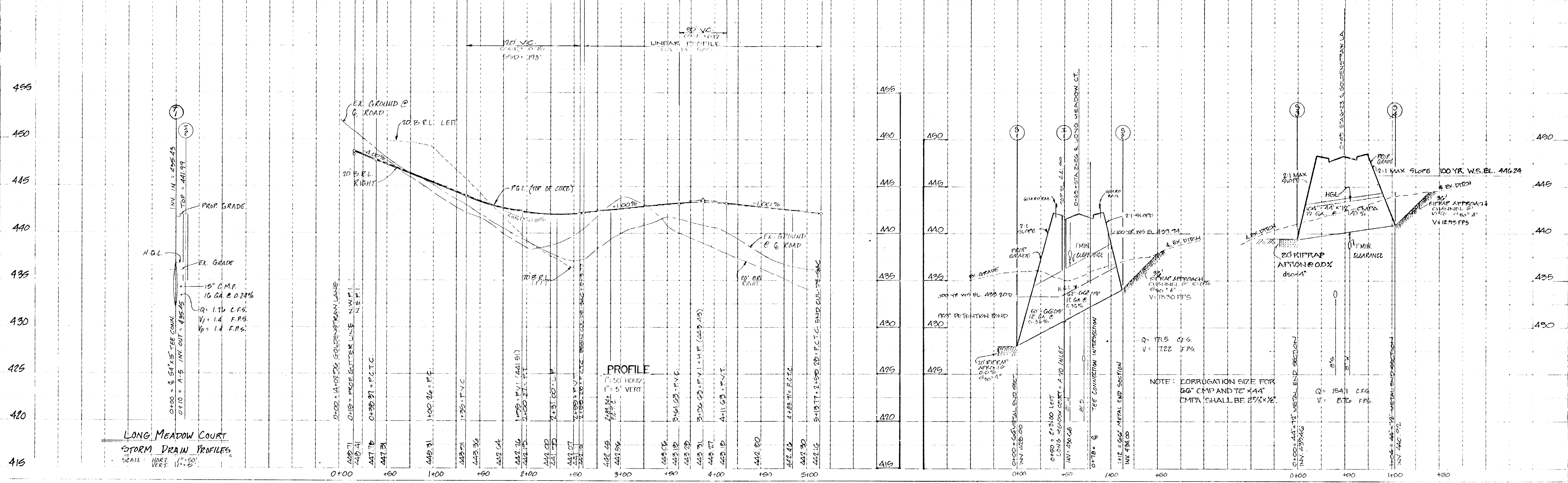
PLAN AND PROFILE
LONG MEADOW COURT

OWNER / DEVELOPER
 LONG MEADOW VENTURE RS
 7050 OAKLAND MILLS ROAD
 SUITE 100
 COLUMBIA, MD. 21046

SCALE AS SHOWN 21 NOV. 1988 SHEET 2 OF 7
 DESIGNER MS. KAF/CLO PROJECT ENGINEER J.H.E.

DE WHEBERRY & DAVIS
 ARCHITECTS • ENGINEERS • PLANNERS • SURVEYORS
 2500 NORTH RIDGE ROAD
 ELICOTT CITY, MARYLAND 21042
 TEL. 461-7476

PROFILE SURVEYED BY DATE
 NOTE BOOK NO. CHECKED BY DATE
 NO. 27 2/24/89



TEMPORARY SEDIMENT TRAP #1

1. DRAINAGE AREA TO TRAP: 0.99 AC.
2. TYPE OF TRAP: STONE OUTLET SEDIMENT TRAP
3. SEDIMENT STORAGE REQUIRED: 66 CY.
4. TOTAL VOLUME PROVIDED: 74 CY.
5. TRAP SIZE (BOTTOM DIMENSION): 40' X 50'
6. TRAP DEPTH: 1.0'
7. BOTTOM ELEVATION: 429.00'
8. CREST ELEVATION: 431.00'
9. CLEANOUT ELEVATION: 427.50'
10. OUTLET WIDTH: 5.0'
11. SIDE SLOPE: 2:1

TEMPORARY STORMWATER MANAGEMENT

1. SWM DRAINAGE AREA: 47.55 AC.
2. BOTTOM ELEVATION: 427.00'
3. 10 YEAR STORM ELEVATION: 432.00'
4. 100 YEAR STORM ELEVATION: 433.20'
5. TOP EMBANKMENT ELEVATION: 434.20'
6. RISER CREST ELEVATION: 431.00'
7. BARREL INV. ELEVATION (IN): 427.00'
8. BARREL INV. ELEVATION (OUT): 425.40'
9. EMERGENCY SPILLWAY WEIR CREST ELEVATION: 431.00'

Sediment Control trap # 2

1. Drainage area to trap: 2.11 acres
2. Type of trap: STONE outlet trap
3. Volume required: 141 cy
4. Volume provided: 148 cy
5. Trap size: 40' X 50'
6. Trap depth: 2.0'
7. Bottom elev.: 437.0'
8. Crest elev.: 440.0'
9. Cleanout elev.: 438.0'
10. Outlet width: 6.0'
11. Side slope: 2:1

Sediment Control trap # 4

1. Drainage area to trap: 2.12 acres
2. Type of trap: STONE outlet trap
3. Volume required: 142 cy
4. Volume provided: 148 cy
5. Trap size: 40' X 50'
6. Trap depth: 2.0'
7. Bottom elev.: 445.0'
8. Crest elev.: 448.0'
9. Cleanout elev.: 446.0'
10. Outlet width: 6.0'
11. Side slope: 2:1

Sediment Control trap # 5

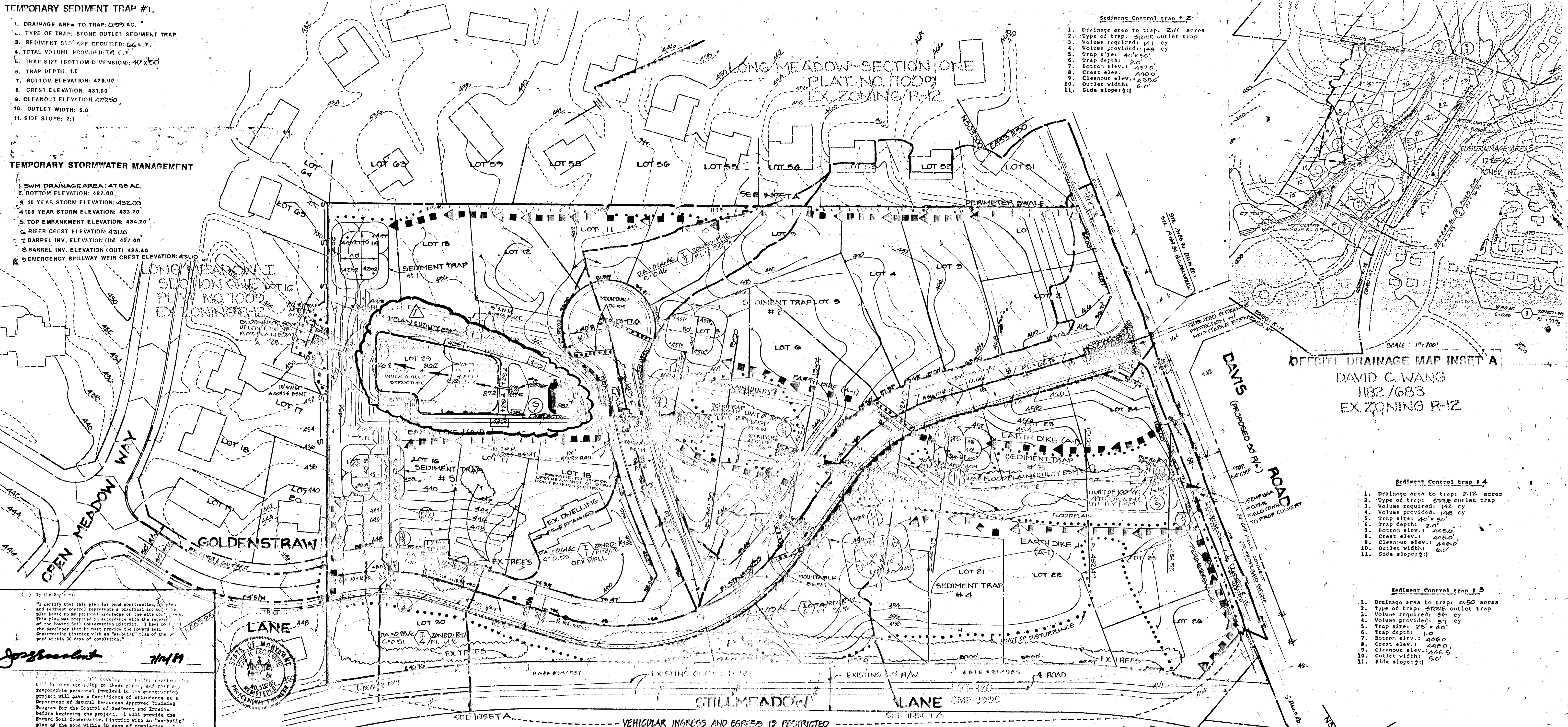
1. Drainage area to trap: 0.50 acres
2. Type of trap: STONE outlet trap
3. Volume required: 36 cy
4. Volume provided: 37 cy
5. Trap size: 25' X 40'
6. Trap depth: 1.0'
7. Bottom elev.: 446.0'
8. Crest elev.: 448.0'
9. Cleanout elev.: 446.5'
10. Outlet width: 5.0'
11. Side slope: 2:1

Sediment Control trap # 5

1. Drainage area to trap: 1.97 acres
2. Type of trap: STONE outlet trap
3. Volume required: 132 cy
4. Volume provided: 134 cy
5. Trap size: 40' X 45'
6. Trap depth: 2.0'
7. Bottom elev.: 439.0'
8. Crest elev.: 440.0'
9. Cleanout elev.: 431.0'
10. Outlet width: 6.0'
11. Side slope: 2:1

NOTES:

1. AFTER AREA UPSTREAM OF INLET I-3 IS STABILIZED, REMOVE TEMPORARY E. S. 5 AND DEGRADE TEMPORARY SWM TRAP # 5 AND INSTALL PIPE IN ACCORDANCE WITH PLAN & PROFILE SHOWN.
2. ALL UTILITY CONSTRUCTION IN WETLANDS IS TO BE BROUGHT BACK TO ORIGINAL GRADE.
3. GRADING INDICATED WITHIN THE BUILDING LOTS IS TEMPORARY FOR THE PURPOSE OF ROAD CONSTRUCTION AND INSTALLATION OF SEDIMENT CONTROL MEASURES.
3. CONT. THE FINAL SITE GRADING FOR THE LOTS WILL BE SHOWN IN COMPLIANCE WITH THE MINIMUM R-12 ZONING LOT SIZE REQUIREMENTS ON THE SITE DEVELOPMENT PLAN.



OFFSITE DRAINAGE MAP INSET A
DAVID C. WANG
1182/683
EX. ZONING R-12

By the Engineer:
I certify that this plan for pond construction, erosion and sediment control represents a practical and workable plan based on the present knowledge of the site and that this plan was prepared in accordance with the requirements of the Board of Conservation District. I have advised the developer that he must provide the Board of Conservation District with an "as-built" plan of the pond within 30 days of completion.

Jorge Mendez 7/14/89

These plans for all pond construction, soil erosion and sediment control meet the requirements of the Board of Conservation District.

Robert W. Zehm 7/14/89

APPROVED: HOWARD COUNTY DEPARTMENT OF PUBLIC WORKS

Paul D. Deaton 9/14/89

Shawnee D. McKeand 9/13/89

William E. Key 9-15-89

APPROVED: HOWARD COUNTY DEPT. OF PLANNING AND ZONING

Frank S. Zaydel 7/14/89

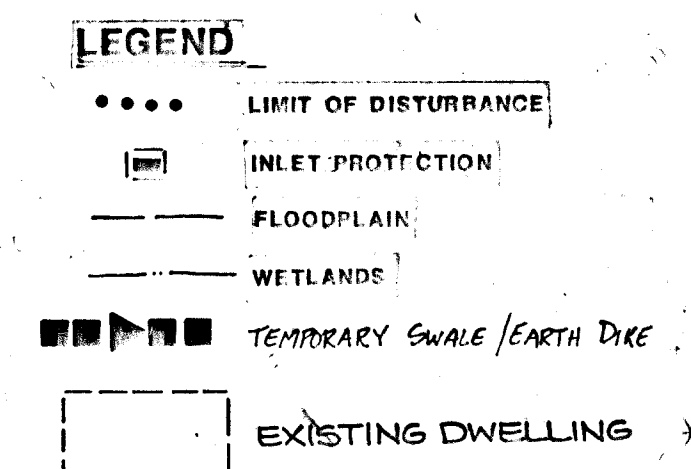
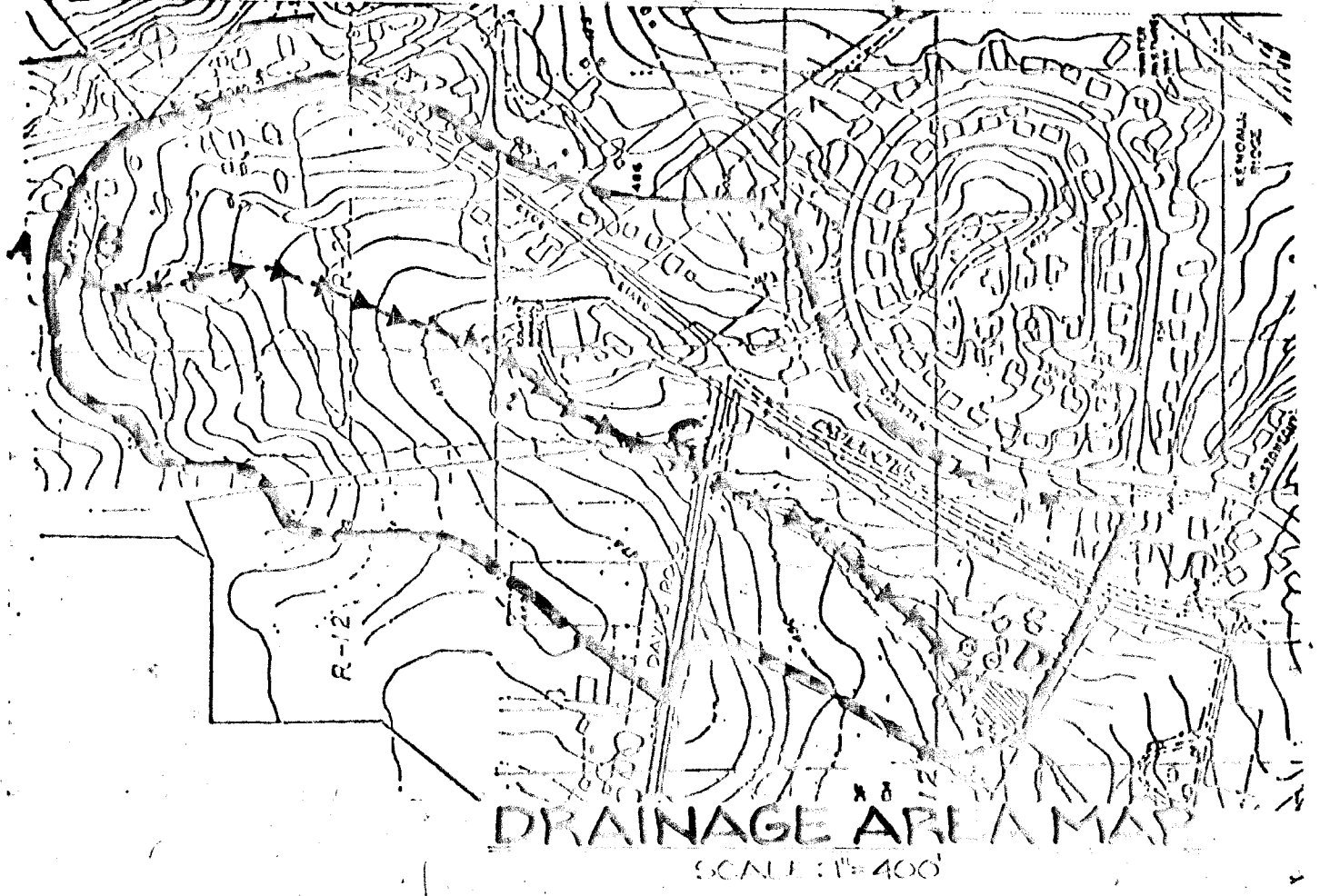
REVISION	DATE	BY	DESCRIPTION
1	7-14-89	J.M.	PRELIMINARY PLAN
2	7-14-89	R.W.Z.	REVISED PLAN
3	9-14-89	P.D.	APPROVED PLAN
4	9-13-89	S.D.	APPROVED PLAN
5	9-15-89	W.E.K.	APPROVED PLAN
6	7-14-89	F.S.Z.	APPROVED PLAN

Dewberry & Davis
ARCHITECTS - ENGINEERS - PLANNERS - SURVEYORS

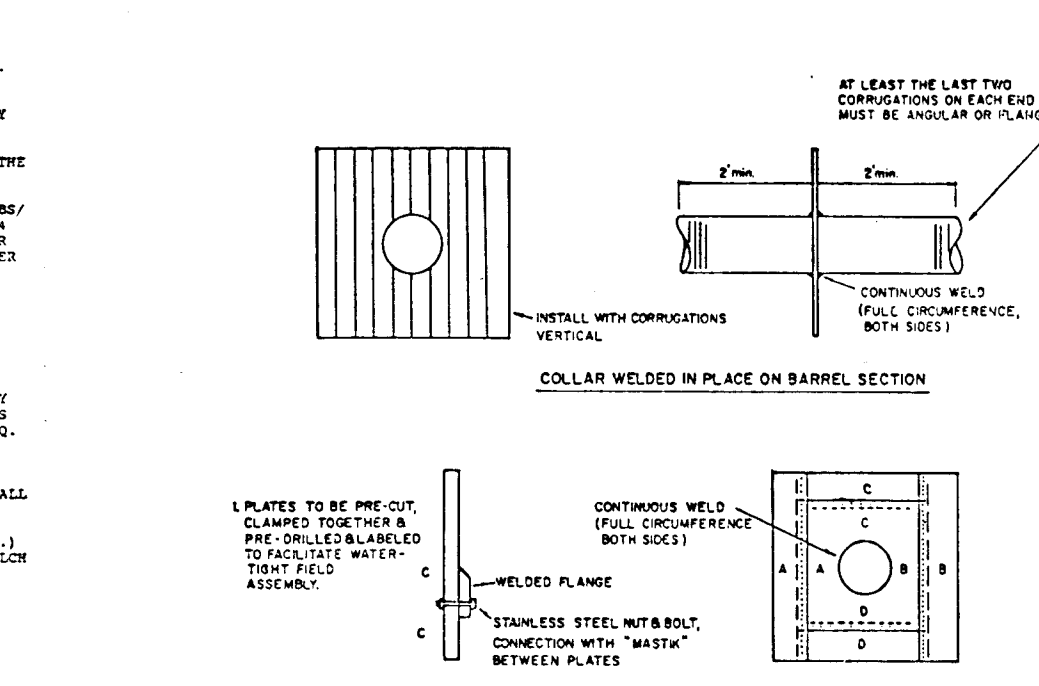


OWNER/DEVELOPER
LONG MEADOW VENTURERS
7050 OAKLAND MILLS ROAD
SUITE 100
COLUMBIA, MD. 21046

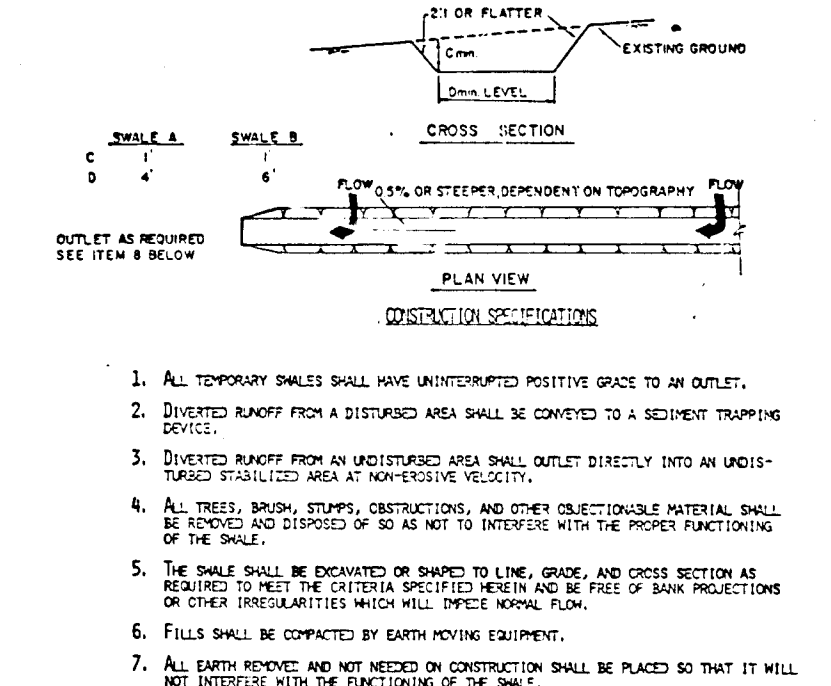
DRAINAGE AREA MAP, SWM PLAN & GRADING AND SEDIMENT CONTROL
LONG MEADOW II
TAX MAP 36 PARCEL 264
6TH ELECTION DISTRICT
HOWARD COUNTY, MARYLAND



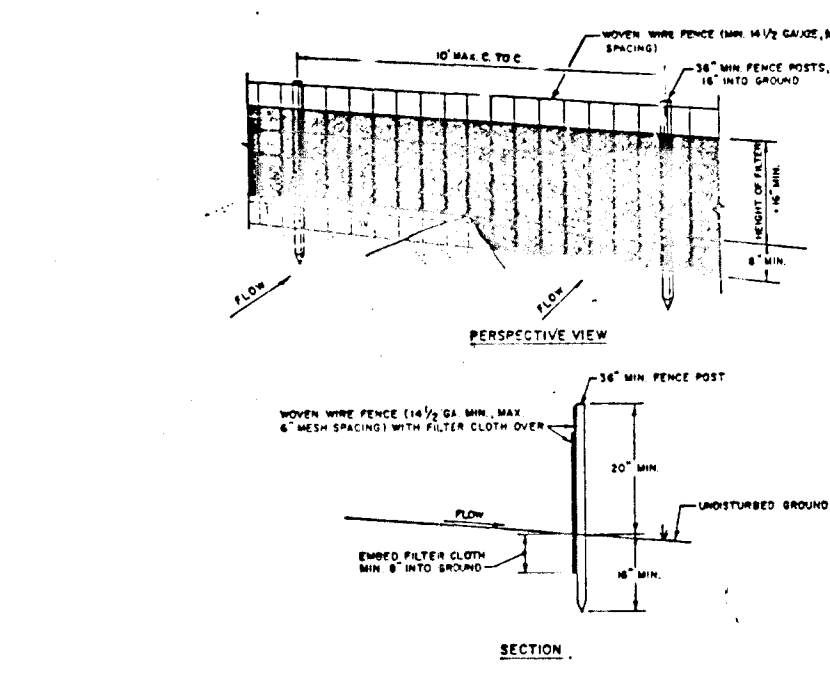
PERMANENT SEEDING NOTES:
 APPLY TO GRADED OR GRADED AREA NOT SUBJECT TO DISTURBANCE FURTHER.
 DISTURBANCE AREA A PERMANENT, LONG-LIVED VEGETATIVE COVER IS NEEDED.
 SEEDING SHALL BE ACCORDING TO THE SEEDING GUIDE FOR THE DISTURBANCE AREA.
 SEEDING SHALL BE ACCORDING TO THE SEEDING GUIDE FOR THE DISTURBANCE AREA.
 SEEDING SHALL BE ACCORDING TO THE SEEDING GUIDE FOR THE DISTURBANCE AREA.



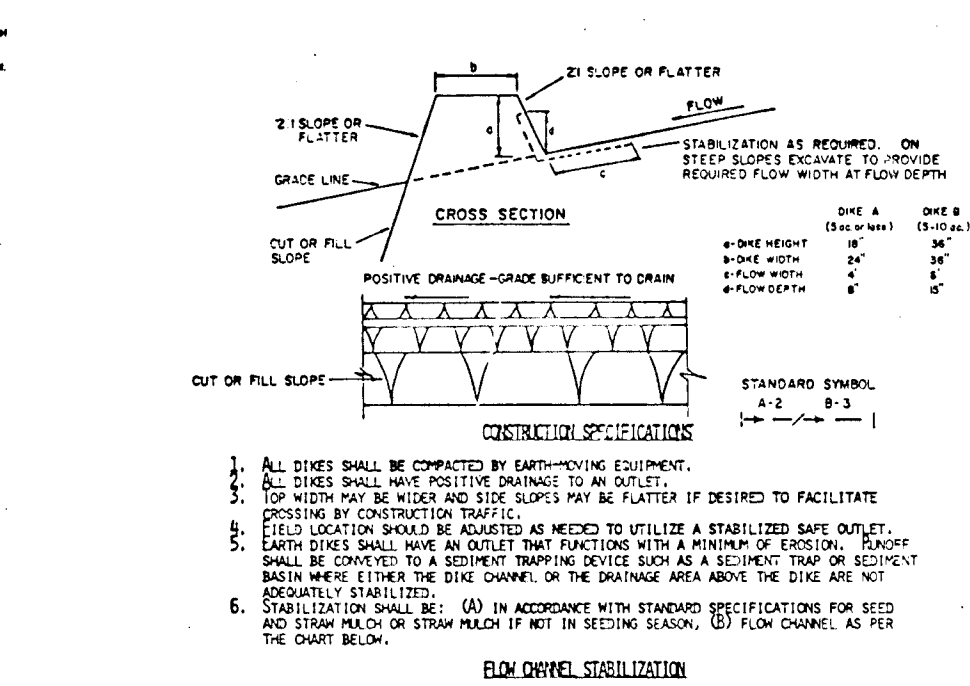
ANTI-SEEP COLLAR
NOT TO SCALE



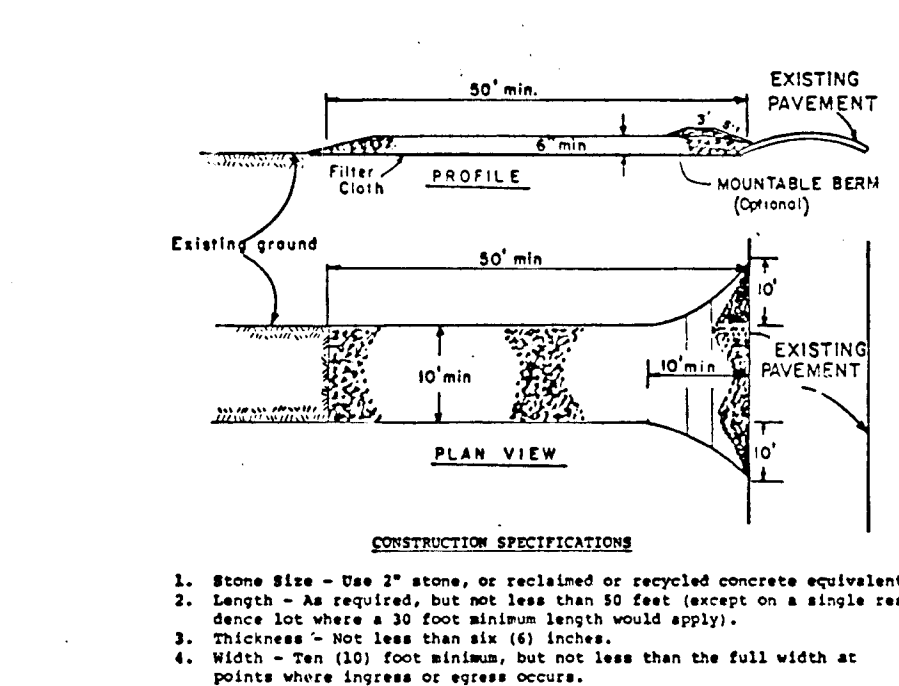
TEMPORARY SWALE
NOT TO SCALE



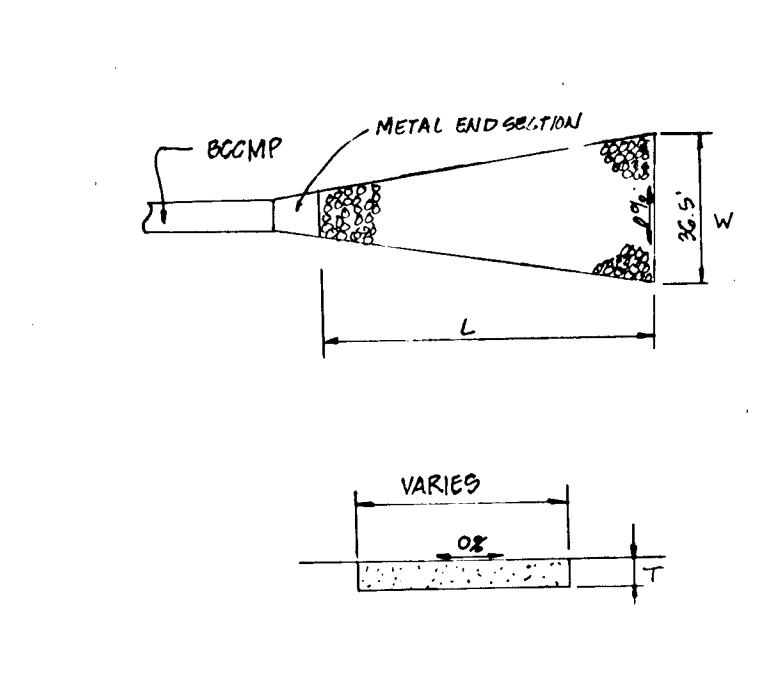
SILT FENCE
NOT TO SCALE



EARTH DIKE
NOT TO SCALE

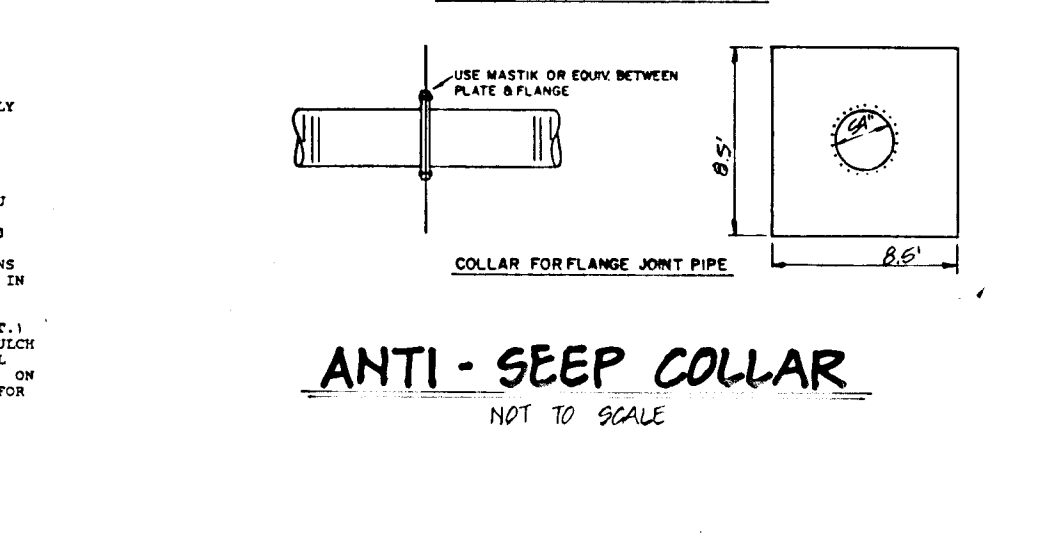


STABILIZED CONSTRUCTION ENTRANCE
NOT TO SCALE

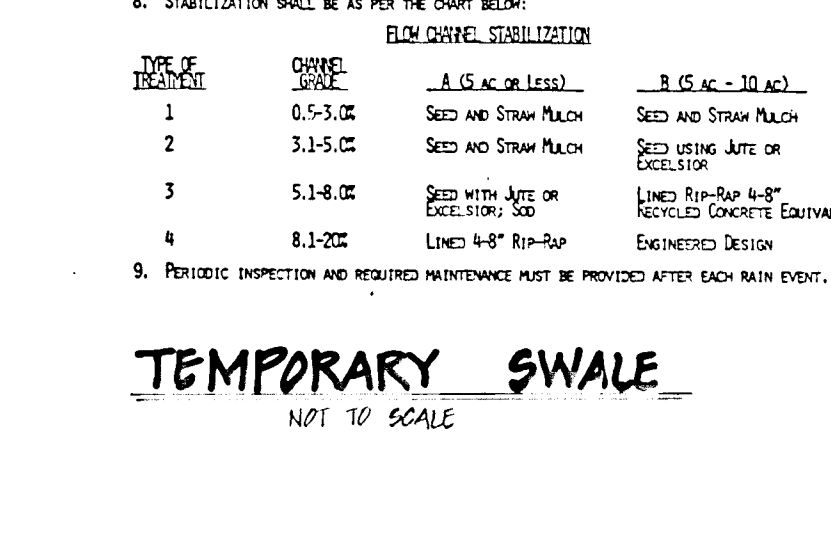


RIPRAP CHANNEL
NOT TO SCALE

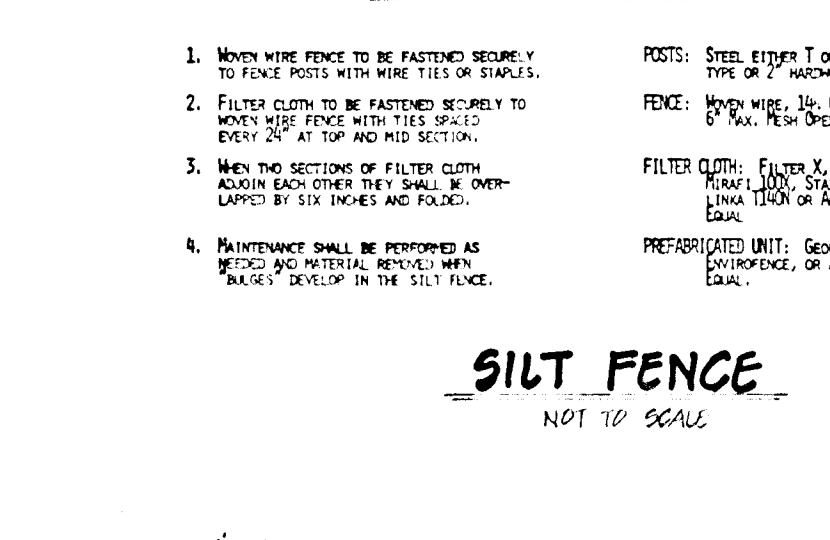
PERMANENT SEEDING NOTES:
 APPLY TO GRADED OR GRADED AREA SUBJECT TO BE RESTORED WHERE A BIODIVERSITY COVER IS NEEDED.
 SEEDING SHALL BE ACCORDING TO THE SEEDING GUIDE FOR THE DISTURBANCE AREA.
 SEEDING SHALL BE ACCORDING TO THE SEEDING GUIDE FOR THE DISTURBANCE AREA.



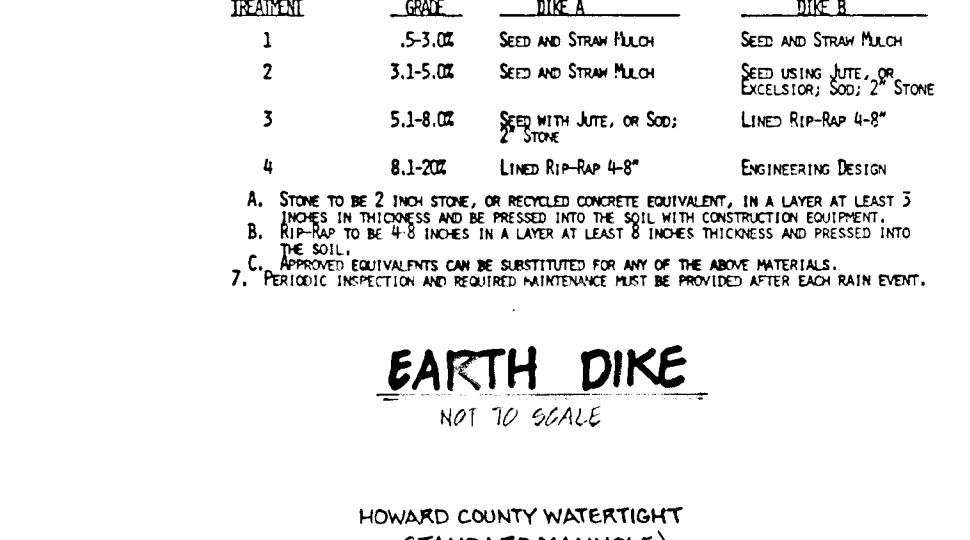
METAL END SECTION ARCH METAL PIPE
NOT TO SCALE



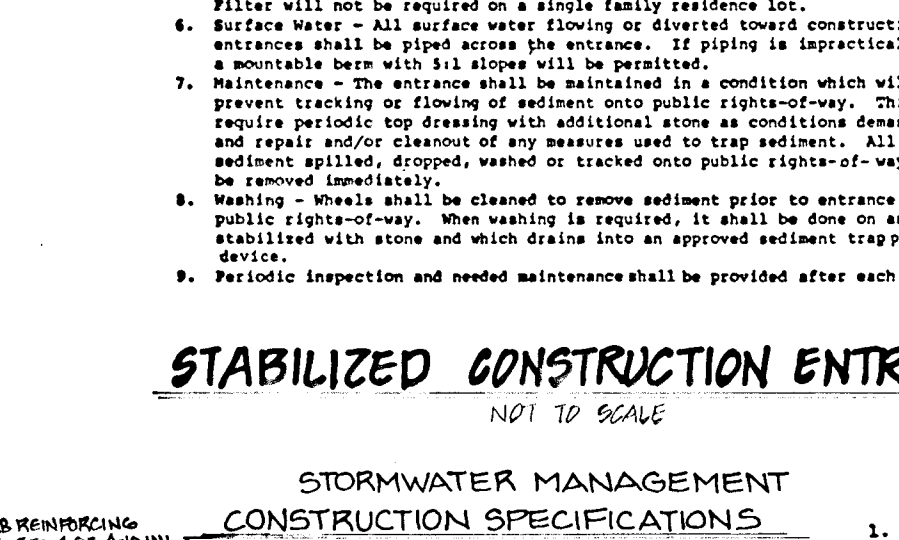
STONE OUTLET SEDIMENT TRAP
NOT TO SCALE



CURB INLET PROTECTION
NOT TO SCALE

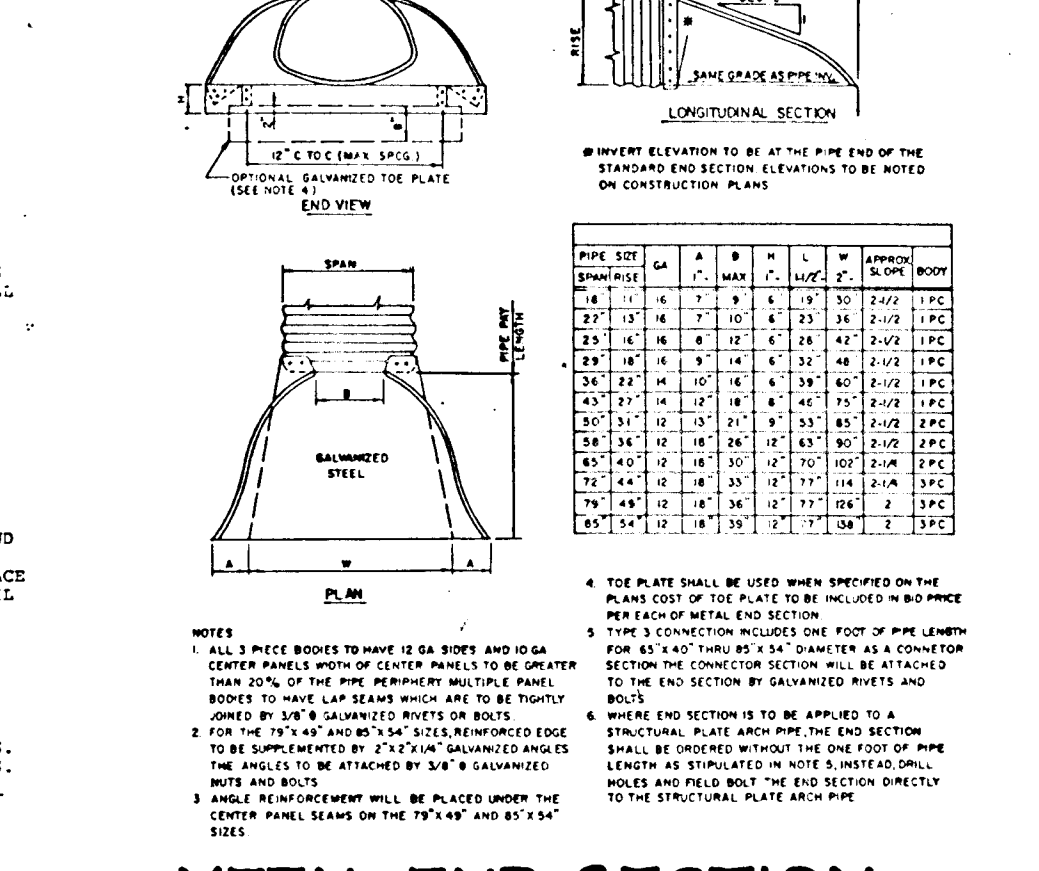


TRASH RACK DETAIL
NOT TO SCALE



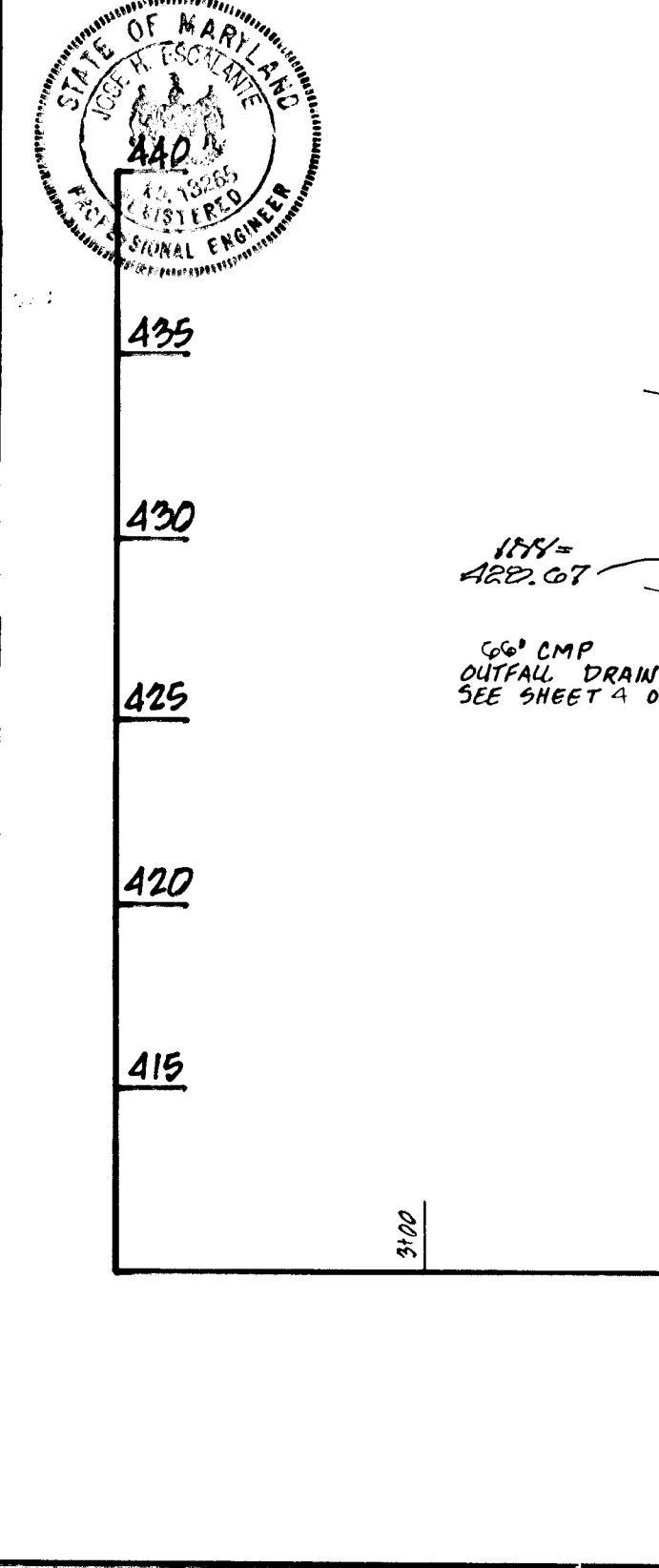
RIPRAP APPROACH APRON
NOT TO SCALE

SEDIMENT CONTROL NOTES:
 1. A MINIMUM OF 24 HOURS NOTICE MUST BE GIVEN TO THE HOWARD COUNTY OFFICE OF INSPECTION AND PERMITS PRIOR TO THE START OF ANY CONSTRUCTION.
 2. ALL SEEDING SHALL BE ACCORDING TO THE SEEDING GUIDE FOR THE DISTURBANCE AREA.
 3. FOLLOWING INITIAL SOIL DISTURBANCE OR REDISTURBANCE, PERMANENT OR TEMPORARY STABILIZATION SHALL BE COMPLETED WITHIN 7 CALENDAR DAYS FOR ALL DISTURBANCE AREAS.
 4. ALL DISTURBANCE AREAS MUST BE STABILIZED WITHIN THE PERIOD SPECIFIED ABOVE IN ACCORDANCE WITH THE HOWARD COUNTY DESIGN MANUAL, STORM DRAINAGE.
 5. ALL DISTURBANCE AREAS MUST BE STABILIZED WITHIN THE PERIOD SPECIFIED ABOVE IN ACCORDANCE WITH THE HOWARD COUNTY DESIGN MANUAL, STORM DRAINAGE.
 6. ALL SEEDING SHALL BE ACCORDING TO THE SEEDING GUIDE FOR THE DISTURBANCE AREA.
 7. EROSION CONTROL STRUCTURES ARE TO REMAIN IN PLACE AND ARE TO BE MAINTAINED IN OPERATIVE CONDITION UNTIL PERMITS FOR THESE STRUCTURES HAVE BEEN OBTAINED FROM THE HOWARD COUNTY SEDIMENT CONTROL INSPECTOR.

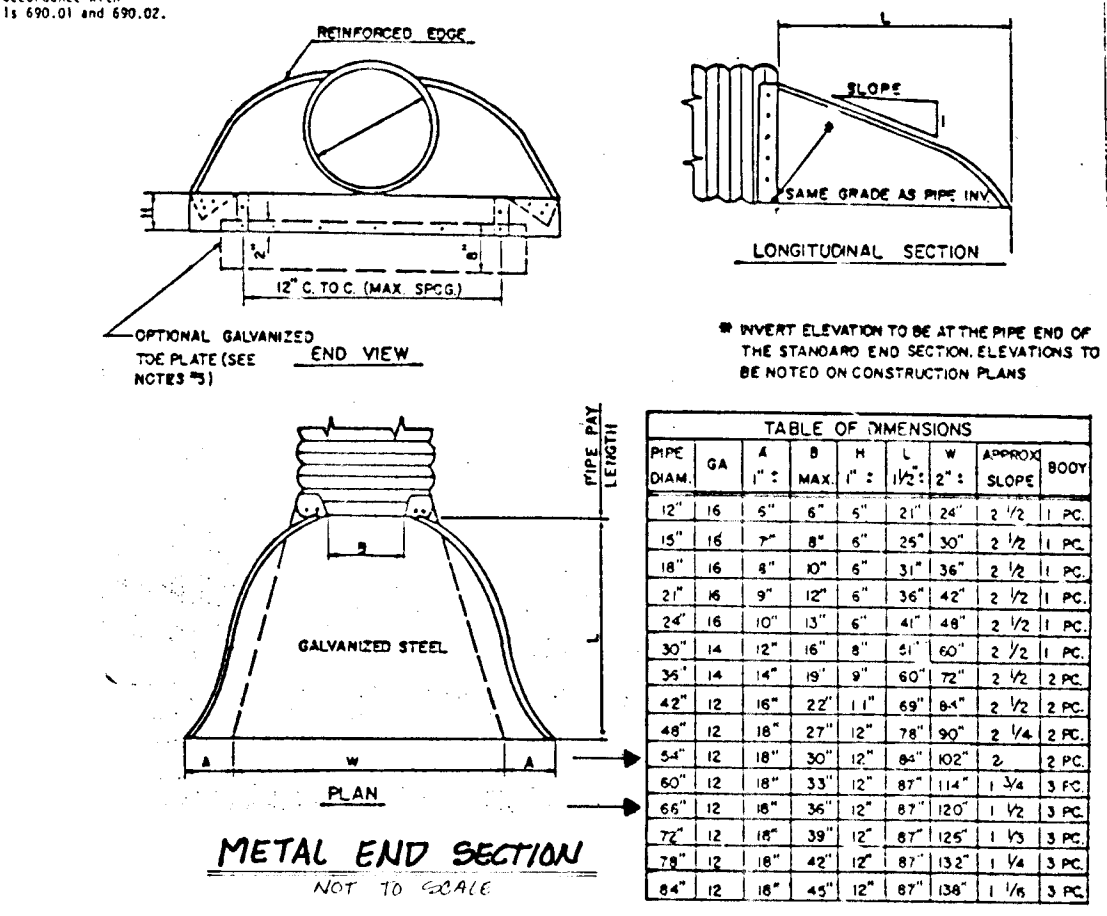


PIPE BLOCKING DETAIL
NOT TO SCALE

APPROVED:
 [Signatures and dates of approval from Howard County Department of Public Works, Planning and Zoning, and other officials.]



RISER BASE DETAIL
NOT TO SCALE



METAL END SECTION SEDIMENT BASIN
NOT TO SCALE

REVISIONS

NO.	DATE	BY	DESCRIPTION
1	7-20-03	E.R.B.	REVISED PROFILE A-A TO ACCOMMODATE REVISED FURROWS & S-1

Dewberry & Davis
 ARCHITECTS - ENGINEERS - PLANNERS - SURVEYORS
 3300 N. RIDGE ROAD, SUITE 100
 ELLICOTT CITY, MD. 21043
 (301) 461-7478

OWNER & DEVELOPER
 LONG MEADOW VENTURES
 7050 OAKLAND MILLS ROAD
 SUITE 100
 COLUMBIA, MARYLAND 21046

STORMWATER MANAGEMENT PROFILES AND SEDIMENT CONTROL DETAILS
LONG MEADOW II
 TAX MAP 36 PARCEL 264
 SIXTH ELECTION DISTRICT
 HOWARD COUNTY, MARYLAND

FOOT-9-C
 SHEET 6 OF 7
 F-89-40

