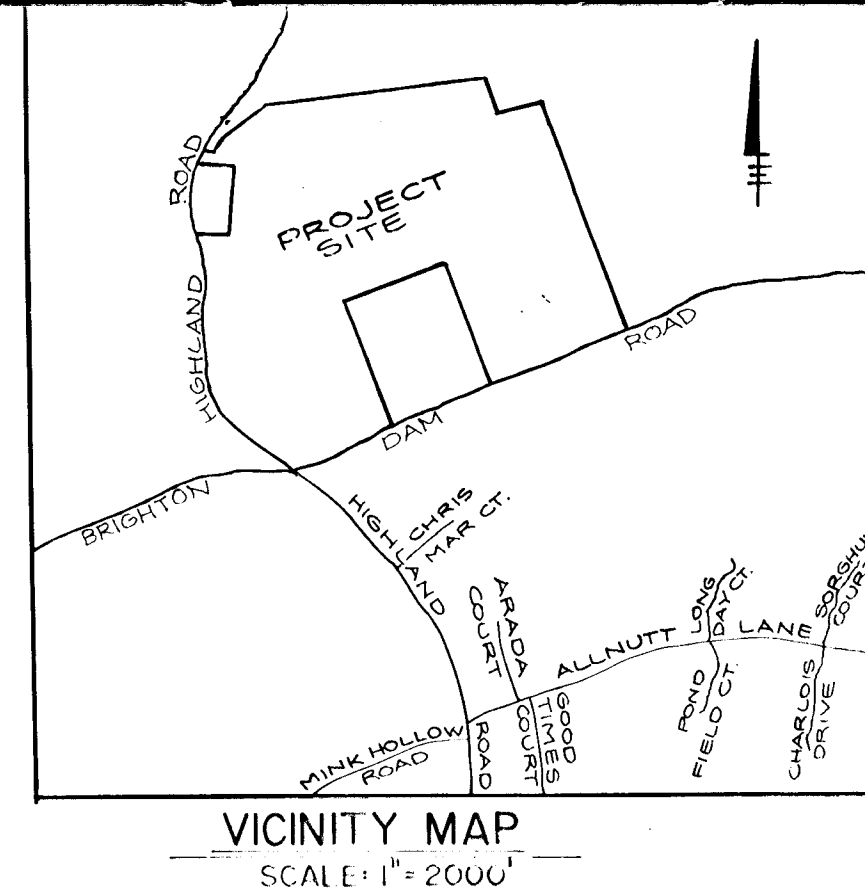
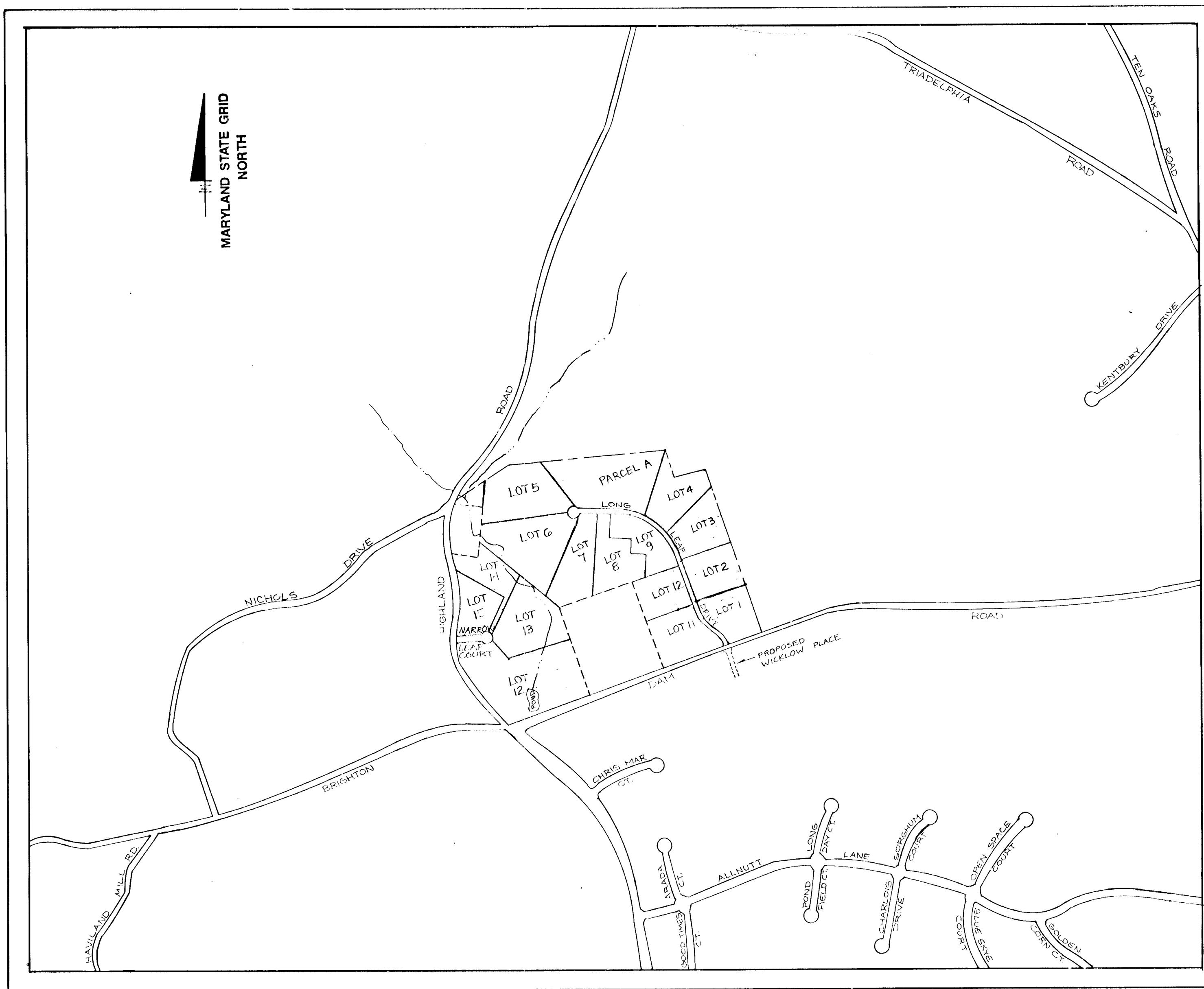


INDEX OF SHEETS	
SHEET NO.	TITLE
1	TITLE SHEET
2	PLAN AND PROFILE BRIGHTON DAM ROAD
3	PLAN AND PROFILE HIGHLAND ROAD AND BRIGHTON DAM ROAD
4	PLAN AND PROFILE HIGHLAND ROAD
5	PLAN AND PROFILE HIGHLAND ROAD STORM PROFILES AND TYPICAL SECTIONS
6	PLAN AND PROFILE HIGHLAND ROAD
7	PLAN AND PROFILE LONG LEAF DRIVE AND NARROW LEAF DRIVE
8	DRAINAGE AREA MAP
9-11	SEDIMENT CONTROL AND GRADING PLAN
12	NOTES AND DETAILS



GENERAL NOTES

1. ALL WORK SHALL BE DONE IN ACCORDANCE WITH HOWARD COUNTY STANDARDS, SPECIFICATIONS, AND DETAILS FOR CONSTRUCTION.
2. ALL UTILITY COMPANIES MUST BE NOTIFIED 24-HOURS IN ADVANCE OF ANY CONSTRUCTION.
3. STORM DRAINAGE TRENCHES WITHIN ROAD RIGHT-OF-WAYS SHALL BE BACKFILLED AND COMPACTED IN ACCORDANCE WITH HOWARD COUNTY CODE.
4. ANY DAMAGE TO PUBLIC RIGHT-OF-WAYS, PAVING, OR EXISTING UTILITIES WILL BE CORRECTED AT THE CONTRACTOR'S EXPENSE.
5. CONTRACTOR TO NOTIFY THE HOWARD COUNTY INSPECTION AND SURVEY DIVISION AT LEAST 3 DAYS BEFORE STARTING WORK SHOWN ON THESE DRAWINGS. TELEPHONE 792-7272
6. APPROXIMATE LOCATION OF EXISTING UTILITIES ARE SHOWN FOR THE CONTRACTOR'S INFORMATION, CONTRACTOR SHALL LOCATE EXISTING UTILITIES WELL IN ADVANCE OF CONSTRUCTION ACTIVITIES AND TAKE ALL NECESSARY PRECAUTIONS TO PROTECT THE EXISTING UTILITIES AND MAINTAIN UNINTERRUPTED SERVICE.
7. ALL TRAFFIC CONTROL DEVICES SHALL BE INSTALLED IN ACCORDANCE WITH THE MANUAL OF UNIFORM TRAFFIC CONTROL DEVICES, 1984 EDITION.

VIEWED FOR HOWARD COUNTY SOIL CONSERVATION DISTRICT TECHNICAL REQUIREMENTS.
[Signature] 4/14/88
 DISTRICT SOIL CONSERVATION SERVICE

THIS DEVELOPMENT IS APPROVED FOR EROSION AND SEDIMENT CONTROL BY THE HOWARD SOIL CONSERVATION DISTRICT.
 APPROVED:
[Signature] 4/14/88
 DISTRICT SOIL CONSERVATION DISTRICT

APPROVED: DEPARTMENT OF PUBLIC WORKS.
[Signature] 12/1/88
 CHIEF, LAND DEVELOPMENT DIVISION

[Signature] 12/12/88
 CHIEF, BUREAU OF HIGHWAYS

[Signature] 12-19-88
 CHIEF, BUREAU OF ENGINEERING

APPROVED: OFFICE OF PLANNING AND ZONING
[Signature] 12-21-88
 CHIEF, DIVISION OF COMMUNITY PLANNING AND LAND DEVELOPMENT

ENGINEER'S CERTIFICATE
 I HEREBY CERTIFY THAT THIS PLAN FOR EROSION AND SEDIMENT CONTROL REPRESENTS A PRACTICAL AND WORKABLE PLAN BASED ON MY PERSONAL KNOWLEDGE OF THE SITE CONDITIONS AND THAT IT WAS PREPARED IN ACCORDANCE WITH THE REQUIREMENTS OF THE HOWARD SOIL CONSERVATION DISTRICT.

[Signature] 11-8-88
 THOMAS L. WILEY, MD REG. NO. 8273
 DEVELOPER'S CERTIFICATE

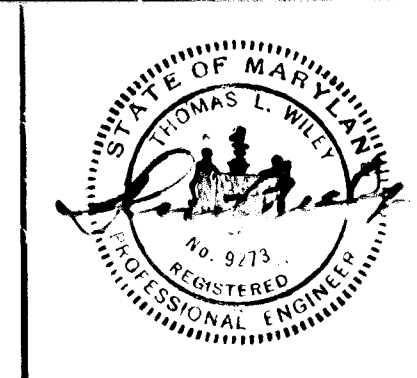
"I/WE CERTIFY THAT ALL DEVELOPMENT AND CONSTRUCTION WILL BE DONE ACCORDING TO THIS PLAN OF DEVELOPMENT AND PLAN FOR EROSION AND SEDIMENT CONTROL AND THAT ALL RESPONSIBLE PERSONNEL INVOLVED IN THE CONSTRUCTION PROJECT WILL HAVE A CERTIFICATE OF ATTENDANCE AT A DEPARTMENT OF NATURAL RESOURCES APPROVED TRAINING PROGRAM FOR THE CONTROL OF SEDIMENT AND EROSION BEFORE BEGINNING THE PROJECT. I ALSO AUTHORIZE PERIODIC ON-SITE INSPECTION BY THE HOWARD SOIL CONSERVATION DISTRICT OR THEIR AUTHORIZED AGENTS, AS ARE DEEMED NECESSARY."
[Signature] 11/7/88
 DATE

LOCATION MAP
 SCALE 1" = 600'

HIGHLAND MEADOWS ROAD CONSTRUCTION DRAWINGS 5TH ELECTION DISTRICT HOWARD COUNTY, MARYLAND

DESIGNED	DATE	DATE	BY	DESCRIPTION
MS	5-20-88	11-12-88	JWS	REV. NOTE IN REVIEW BLOCK & ROAD ALIGNMENT
CHECKED	BD BURTON	8-20-88		
APPROVED	TL WILEY	5-20-88		

Dowberry & Davis
 ENGINEERS — ARCHITECTS — PLANNERS — SURVEYORS
 3300 N. RIDGE ROAD, SUITE 100
 ELLICOTT CITY, MD. 21043
 (301) 461-7478



OWNER/DEVELOPER
 TRICITY DEVELOPMENT CORP.
 12250 ROCKVILLE PIKE STE. 250
 ROCKVILLE, MARYLAND 20852
 (301) 770-7888

TITLE SHEET
HIGHLAND MEADOWS
 SECTION ONE
 LOTS 1 THRU 15 & PARCEL A
 TAX MAP 54 PARCEL 169
 5TH ELECTION DISTRICT
 HOWARD COUNTY, MARYLAND

SCALE AS SHOWN
 V - 86 - 87
 S - 86 - 90
 P - 86 - 20

FILE NO. P10046 SHEET 1 OF 12

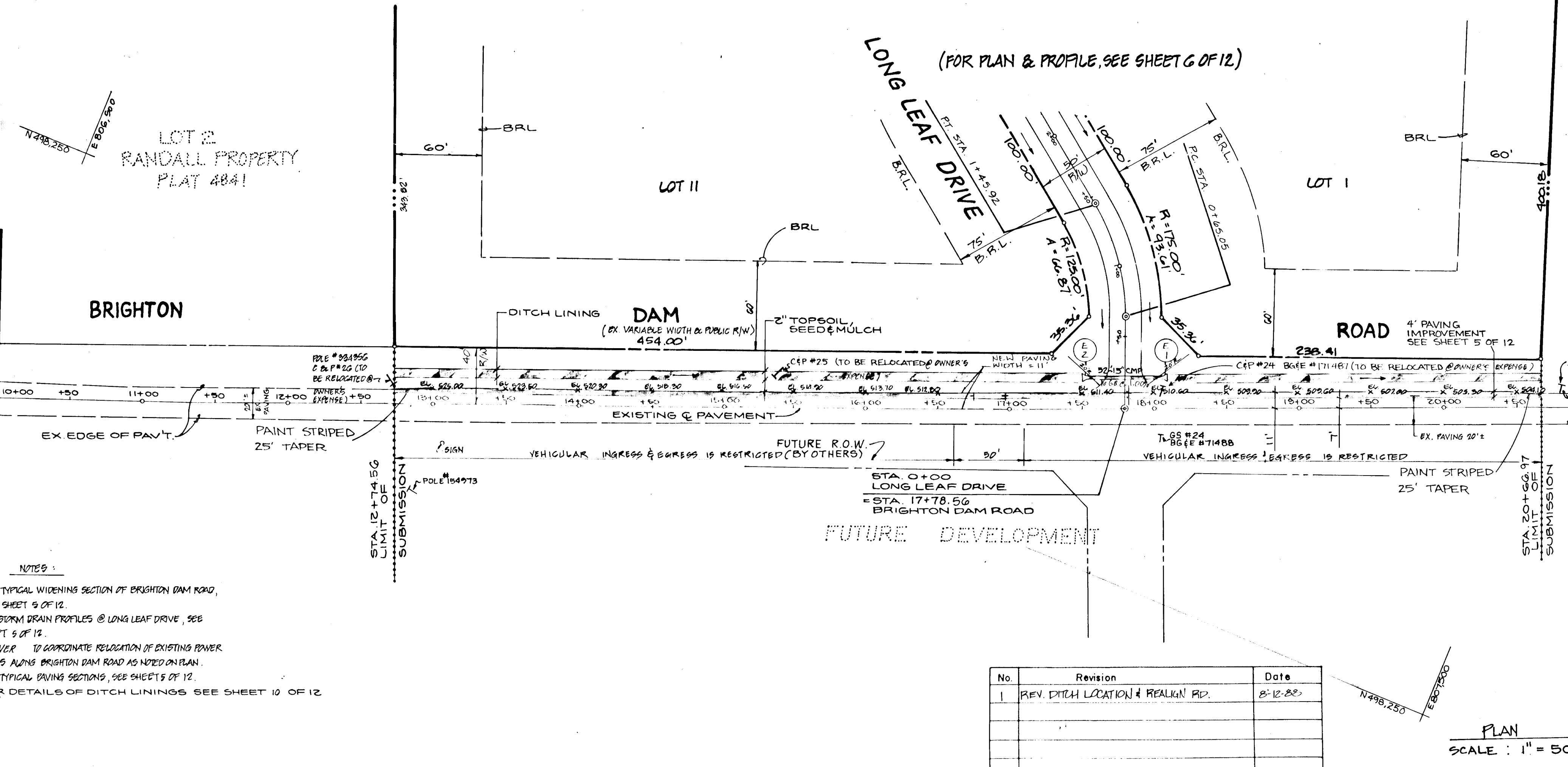
1394

ENGINEER'S CERTIFICATE
 I CERTIFY THAT THIS PLAN FOR EROSION AND SEDIMENT CONTROL REPRESENTS A PRACTICAL AND WORKABLE PLAN BASED ON MY PERSONAL KNOWLEDGE OF THE SITE CONDITIONS AND THAT IT WAS PREPARED IN ACCORDANCE WITH THE REQUIREMENTS OF THE HOWARD SOIL CONSERVATION DISTRICT.

Thomas L. Wiley 11-8-88
 THOMAS L. WILEY, MD. REG. NO. 9273 DATE

DEVELOPER'S CERTIFICATE
 I HEREBY CERTIFY THAT ALL DEVELOPMENT AND CONSTRUCTION WILL BE DONE ACCORDING TO THIS PLAN OF DEVELOPMENT AND PLAN FOR EROSION AND SEDIMENT CONTROL, AND THAT ALL RESPONSIBLE PERSONNEL INVOLVED IN THE CONSTRUCTION PROJECT WILL HAVE A SUFFICIENT KNOWLEDGE OF THE DEPARTMENT OF NATURAL RESOURCES APPROVAL AND THE PLAN FOR THE CONTROL OF EROSION AND SEDIMENT BEFORE BEGINNING THE PROJECT. I ALSO AUTHORIZE THE HOWARD COUNTY INSPECTOR, THE HOWARD COUNTY SOIL CONSERVATION DISTRICT, THE REAL ESTATE BROKERS AS AM DEEMED NECESSARY.

James M. ... 11/3/88
 ROBERT DEVELOPMENT CORP. DATE



WATERFORD SECTION 3 LOT 1 PLAT NO. 6874

MARKLAND STATE

PLAN

SUPPLEMENTED BY DATE

NOTE BOOK ALIGNMENT CHECKED

NO. OF WAY CHECKED

APPROVED: HOWARD COUNTY DEPARTMENT OF PUBLIC WORKS

John R. Roberts 11/14/88
 DATE

APPROVED: HOWARD COUNTY DEPARTMENT OF PLANNING AND ZONING

Mark S. ... 12-21-88
 DATE

APPROVED: HOWARD COUNTY DEPARTMENT OF PUBLIC WORKS

Paul ... 12/1/88
 DATE

Francine W. ... 12/12/88
 DATE

... & ... 12-13-88
 DATE

HIGHLAND MEADOWS SECTION ONE
 LOTS 1 THRU 15 & PARCEL 'A'
 5th ELECTION DISTRICT
 HOWARD COUNTY, MARYLAND

PLAN & PROFILE
BRIGHTON DAM ROAD
 STA. 10+00 TO STA. 20+67.41

OWNER/DEVELOPER
 ROBERT DEVELOPMENT CORP.
 122550 ROCKVILLE PIKE STE. 250
 ROCKVILLE, MARYLAND 20852
 (301) 770-7566

SCALE AS SHOWN DATE MAY 20, 1988 SHEET 2 OF 12
 DESIGNED BY FL/H.S. DRAWN BY M.S.W.D.G. CHECKED BY D.D.BURTON

DEWBERRY & DAVIS
 ARCHITECTS PLANNERS SURVEYORS
 #150 NORTH RIDGE ROAD
 ELICOTT CITY, MARYLAND 21043
 (301) 461-7478

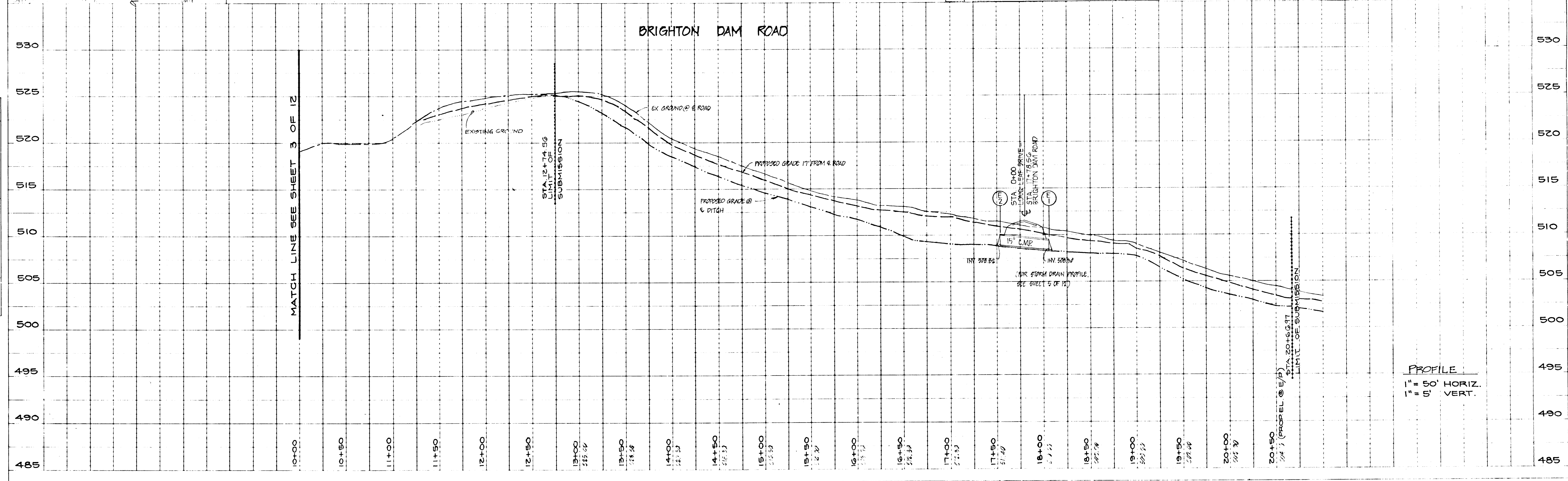
No.	Revision	Date
1	REV. DITCH LOCATION & REALIGN. P.D.	8-12-88

PROFILE

SUPPLEMENTED BY DATE

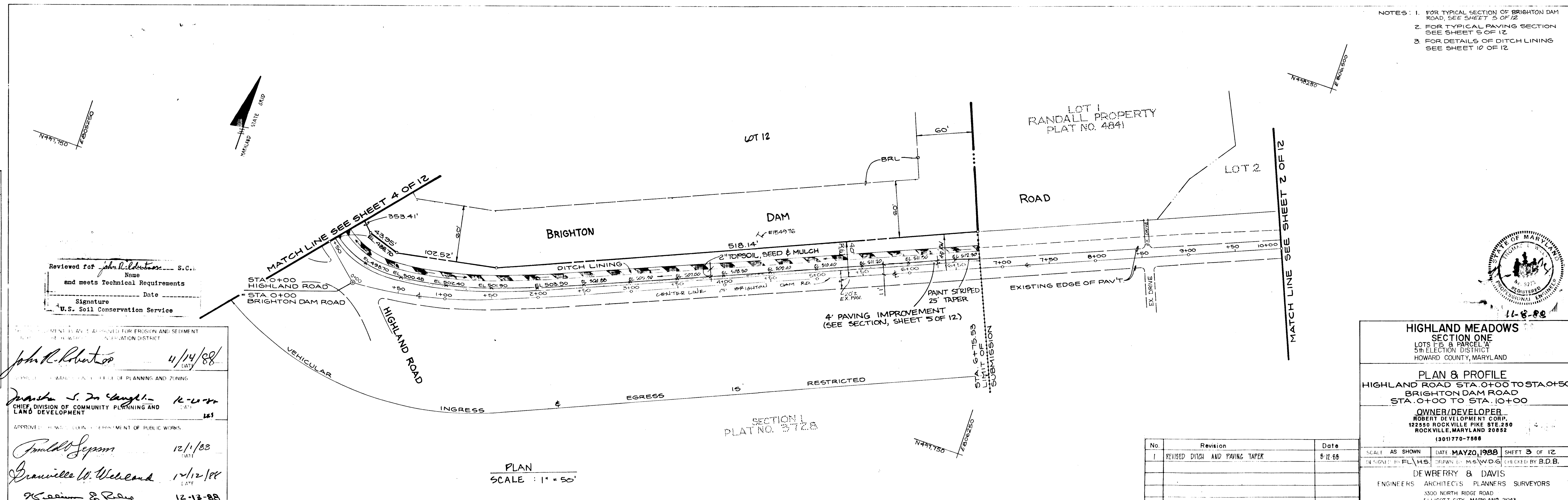
NOTE BOOK GRADES CHECKED

NO. OF STRUCTURE NOTATIONS CHECKED



1304

- NOTES: 1. FOR TYPICAL SECTION OF BRIGHTON DAM ROAD, SEE SHEET 5 OF 12
 2. FOR TYPICAL PAVING SECTION SEE SHEET 5 OF 12
 3. FOR DETAILS OF DITCH LINING SEE SHEET 10 OF 12



Reviewed for *John R. Roberts* S.C.
 and meets Technical Requirements
 Signature: *John R. Roberts* Date: 4/14/88
 U.S. Soil Conservation Service

APPROVED FOR EROSION AND SEDIMENT CONTROL DISTRICT

John R. Roberts 4/14/88
Janice S. DeAngelis 12-12-88
 CHIEF, DIVISION OF COMMUNITY PLANNING AND LAND DEVELOPMENT

Paul D. Seppan 12/1/88
Granville W. Weiland 12/12/88
William E. Raley 12-13-88

HIGHLAND MEADOWS SECTION ONE
 LOTS 1 & 8 PARCEL A
 5th ELECTION DISTRICT
 HOWARD COUNTY, MARYLAND

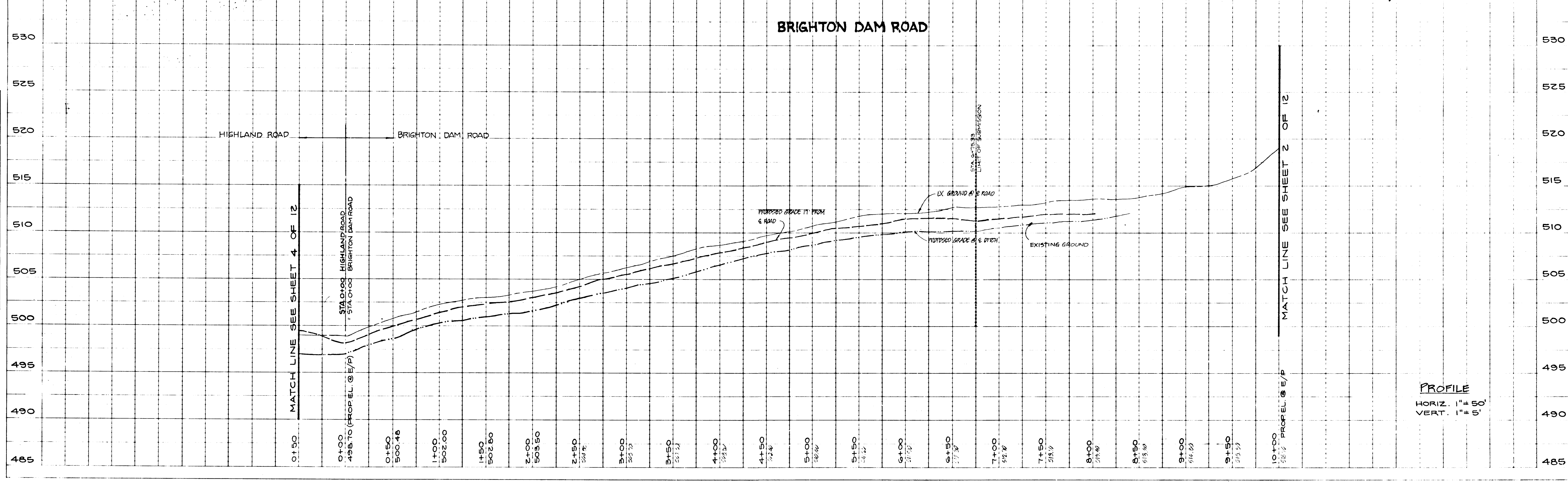
PLAN & PROFILE
 HIGHLAND ROAD STA. 0+00 TO STA. 0+50
 BRIGHTON DAM ROAD STA. 0+00 TO STA. 10+00

OWNER/DEVELOPER
 ROBERT DEVELOPMENT CORP.
 122550 ROCKVILLE PIKE STE. 250
 ROCKVILLE, MARYLAND 20852
 (301) 770-7868

SCALE AS SHOWN DATE: MAY 20, 1988 SHEET 3 OF 12
 DESIGNED BY: FL/H/S DRAWN BY: M.S.W/D.G. CHECKED BY: B.D.B.

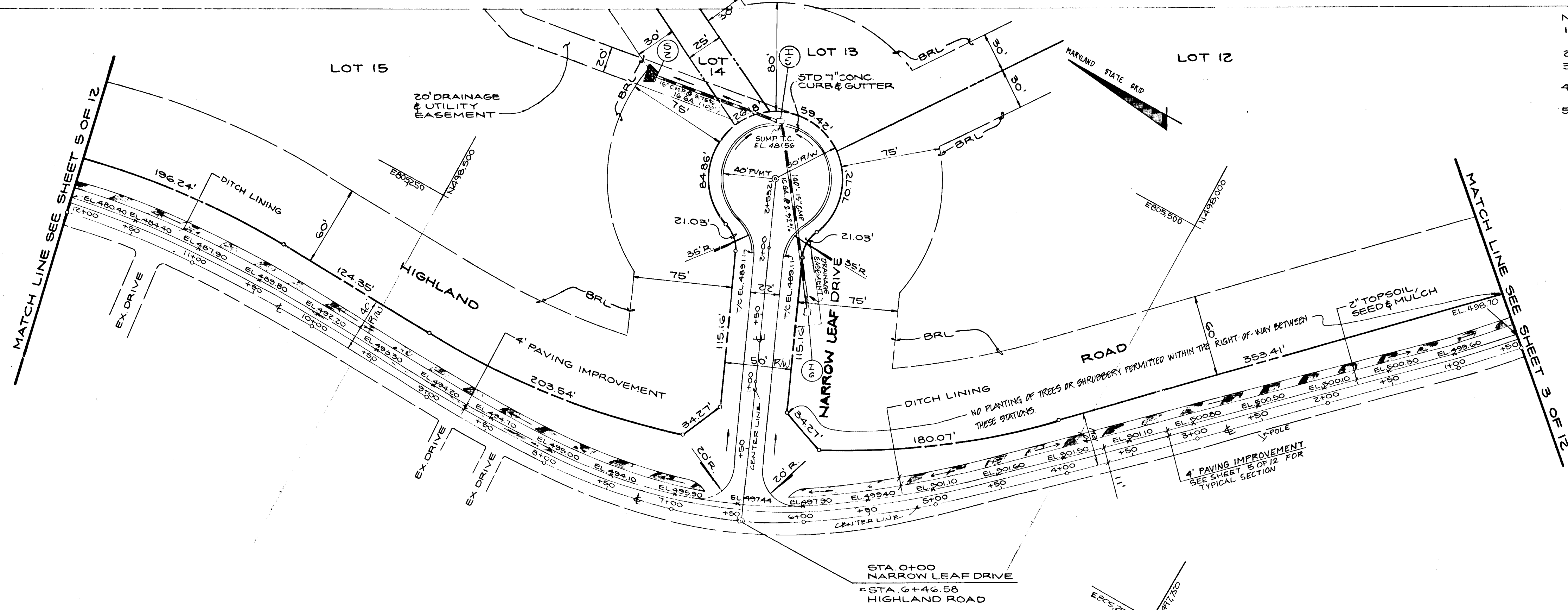
DEWBERRY & DAVIS
 ENGINEERS ARCHITECTS PLANNERS SURVEYORS
 3300 NORTH RIDGE ROAD
 ELLICOTT CITY, MARYLAND 20843
 (301) 461-7478

No.	Revision	Date
1	REVISED DITCH AND PAVING TAPER	5-12-88



1201

- NOTES:
1. FOR TYPICAL WIDENING SECTION OF HIGHLAND ROAD SEE SHEET 5 OF 12
 2. FOR STORM DRAIN PROFILE SEE SHEET 5 OF 12
 3. FOR TYPICAL PAVING SECTIONS SEE SHEET 5 OF 12
 4. FOR DETAILS OF DITCH LININGS SEE SHEET 7 OF 12
 5. FOR PLAN AND PROFILE OF NARROW LEAF DRIVE SEE SHEET 7 OF 12



PLAN
SCALE: 1" = 50'

No.	Revision	Date
1	REV. A5 PER COUNTY COMMENT	6-12-88

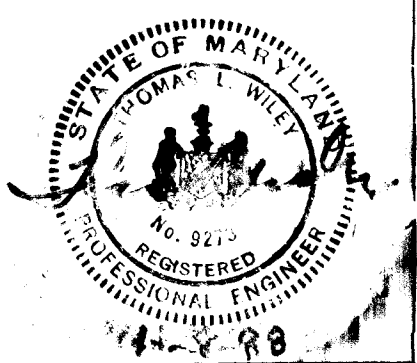
HIGHLAND MEADOWS
SECTION ONE
LOTS 1 THROUGH 15 PARCEL 'A'
5th ELECTION DISTRICT
HOWARD COUNTY, MARYLAND

PLAN & PROFILE
HIGHLAND ROAD
STA. 0+50 TO STA. 12+00

OWNER/DEVELOPER
ROBERT DEVELOPMENT CORP.
12250 ROCKVILLE PIKE STE 250
ROCKVILLE, MARYLAND 20852
(301) 770-7588

SCALE AS SHOWN DATE MAY 20, 1988 SHEET 4 OF 12
DRAWN BY: M.S.W.D.G. CHECKED BY: B.G. BURTON

DEWBERRY & DAVIS
ENGINEERS ARCHITECTS PLANNERS SURVEYORS
3300 NORTH RIDGE ROAD
ELICOTT CITY, MARYLAND 21093
(301) 461-7478



PLAN
SUPPORTED
NOTED
NOTE BOOK
BY: DATE

APPROVED FOR THE BOARD OF PLANNING AND ZONING

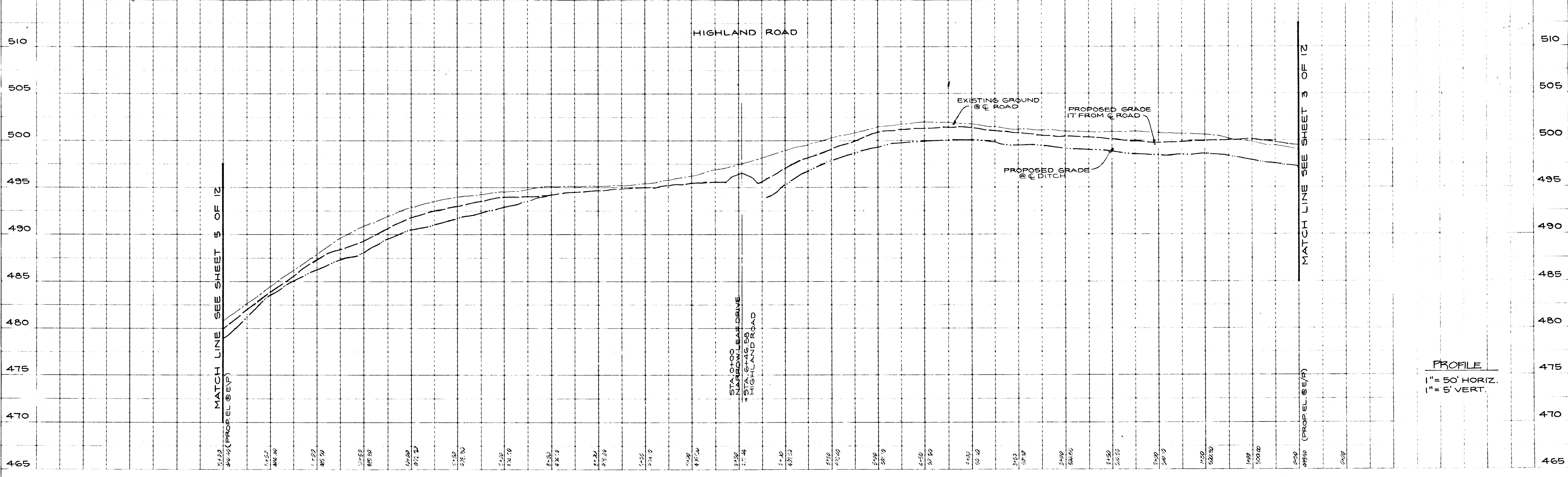
Frank S. McCarty 12-12-88
CHIEF, DIVISION OF COMMUNITY PLANNING AND LAND DEVELOPMENT

Donald W. Sepp 12/1/88

Granville W. Weaver 12/12/88

William E. King 12-13-88

PROFILE
SUPPORTED
NOTED
NOTE BOOK
BY: DATE



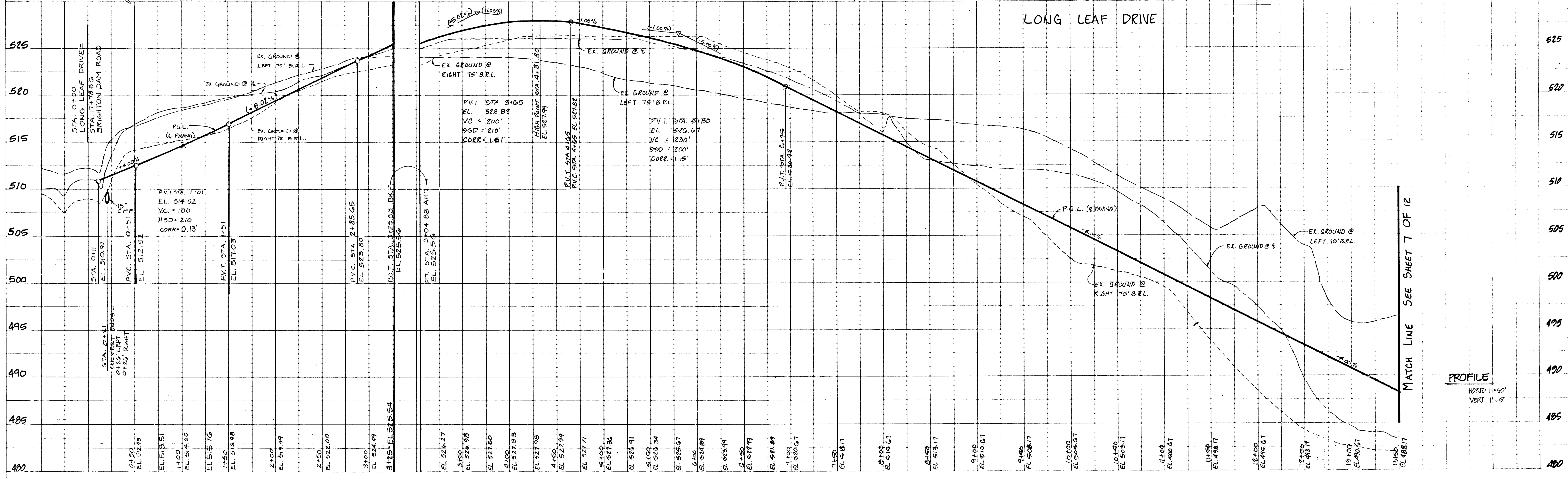
PROFILE
1" = 50' HORIZ.
1" = 5' VERT.

13974

DATE: _____ BY: _____
 PLAN
 SURVEYED
 NOTE BOOK
 ALIGNMENT CHECKED
 PLOTTED
 BT. OF WAY CHECKED
 No. _____

APPROVED: HOWARD COUNTY OFFICE OF PLANNING AND ZONING
Janice S. DeLangelis 12/2/88
 CHIEF, DIVISION OF COMMUNITY PLANNING AND LAND DEVELOPMENT
 APPROVED: HOWARD COUNTY DEPARTMENT OF PUBLIC WORKS
Donald J. Seaman 12/1/88
 CHIEF, DIVISION OF PUBLIC WORKS
Graville W. Wheland 12/1/88
 CHIEF, DIVISION OF PUBLIC WORKS
Richard E. Riley 12/13/88
 CHIEF, DIVISION OF PUBLIC WORKS

DATE: _____ BY: _____
 PROFILE
 SURVEYED
 NOTE BOOK
 GRAVITY CHECKED
 B.M.'S NOTED
 STRUCTURE NOTATIONS CHECKED
 No. _____



- NOTES:
 1. FOR TYPICAL SECTION, SEE SHEET 5 OF 12.
 2. FOR TYPICAL PAVING SECTION, SEE SHEET 5 OF 12.
 3. FOR DETAILS OF DITCH LININGS, SEE SHEET 5 OF 12.
 4. FOR STORM DRAIN PROFILES, SEE SHEET 5 OF 12.
 5. FOR PROFILE OF STORM SEWER, SEE SHT. 10.



HIGHLAND MEADOWS
 SECTION ONE
 LOTS 1-15 & PARCEL 1A
 5TH ELECTION DISTRICT
 HOWARD COUNTY, MARYLAND

PLAN & PROFILE
LONG LEAF DRIVE
 STA. 0+00 TO STA. 13+50

OWNER/DEVELOPER
 ROBERT DEVELOPMENT CORP.
 122550 ROCKVILLE PIKE STE. 210
 ROCKVILLE, MARYLAND 20852
 (301) 770-7500

No.	Revision	Date
1	REDESIGNED "ROAD LONG LEAF DRIVE" @ BRIGHTON DAM RD.	6-12-88

SCALE AS NOTED DATE MAY 20, 1988 SHEET 6 OF 12
 DESIGNED BY F.C.H.L. DRAWN BY C.L.D. CHECKED BY B.D.B.

DEWBERRY & DAVIS
 ENGINEERS ARCHITECTS PLANNERS SURVEYORS
 3300 NORTH RIDGE ROAD
 ELLICOTT CITY, MARYLAND 21043
 (301) 461-7478

PLAN
 SCALE: 1"=50'

PROFILE
 HORIZ 1"=60'
 VERT 1"=5'

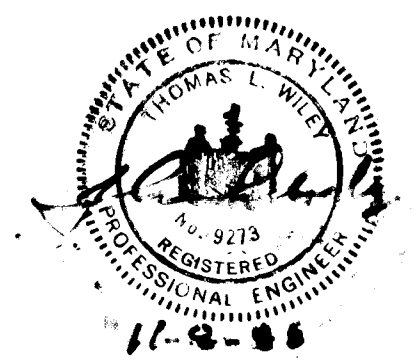
17921

DATE: _____ BY: _____
 PLAN SURVEYED, PLOTTED, CHECKED, AND REVISIONS CHECKED.
 NOTE BOOK GRANTS CHECKED, REVISIONS CHECKED.
 No. _____

DATE: _____ BY: _____
 PROFILE SURVEYED, PLOTTED, CHECKED, AND REVISIONS CHECKED.
 NOTE BOOK GRANTS CHECKED, REVISIONS CHECKED.
 No. _____

APPROVE: HOWARD COUNTY OFFICE OF PLANNING AND ZONING
Frank J. Coughlin 12-20-88
 CHIEF, DIVISION OF COMMUNITY PLANNING AND LAND DEVELOPMENT
 APPROVE: HUNTER COUNTY DEPARTMENT OF PUBLIC WORKS
James M. Johnson 12/1/88
 APPROVE: *Dr. William W. Cleveland* 12/12/88
Robert E. Riley 12-13-88

- NOTES:
1. FOR TYPICAL SECTION, SEE SHEET 5 OF 12.
 2. FOR TYPICAL RAISING SECTION, SEE SHEET 9 OF 12.
 3. FOR DETAILS OF DITCH LININGS, SEE SHEET 10 OF 12.
 4. FOR STORM DRAIN PROFILES, SEE SHEET 5 OF 12.
 5. FOR DETAILS OF DRAINWAY CONNECTIONS, SEE SHEET 4 OF 12.
 6. FOR PROFILE OF STORM DRAINS, SEE THIS SHEET AND SHEETS 5 AND 10 OF 12.

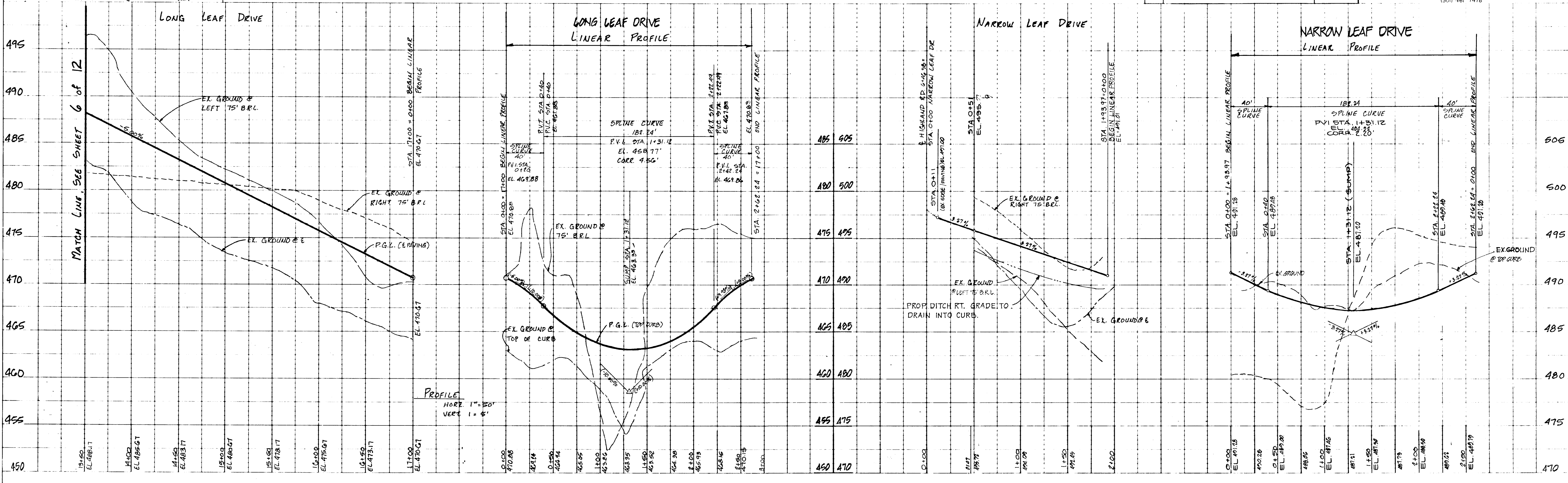
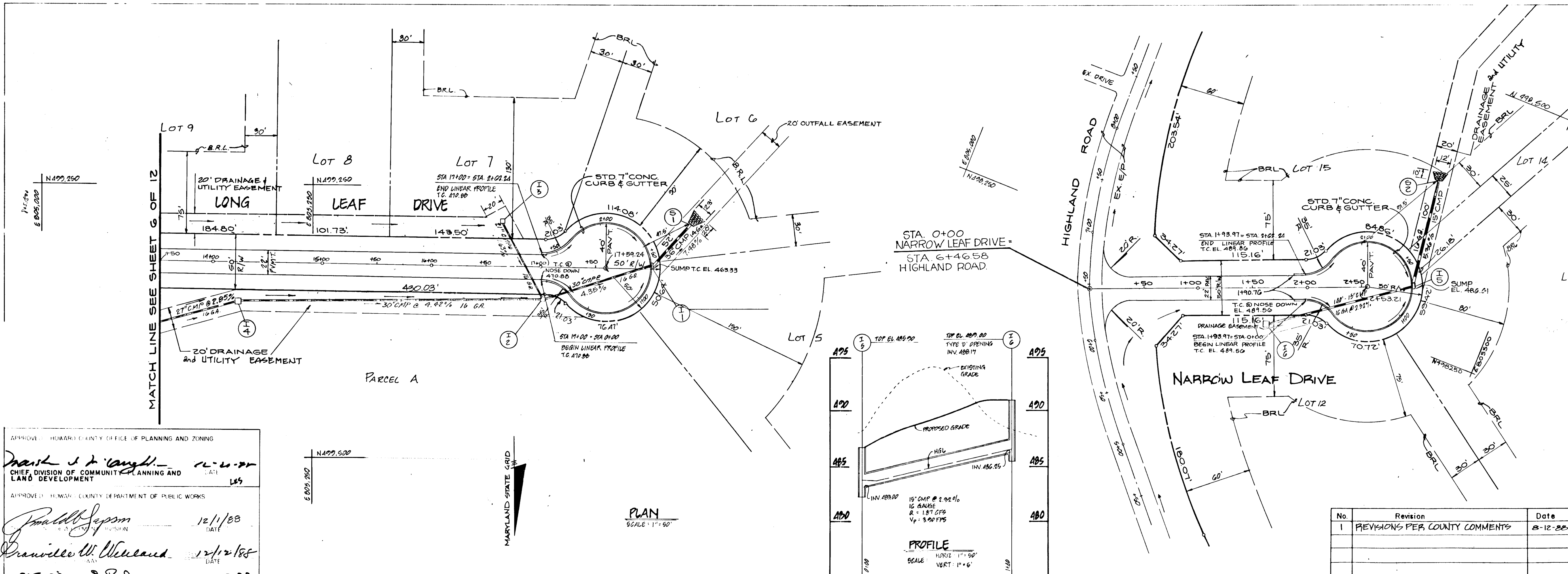


HIGHLAND MEADOWS
 SECTION ONE
 LOTS 1-15 & PARCEL 'A'
 5TH ELECTION DISTRICT
 HOWARD COUNTY, MARYLAND

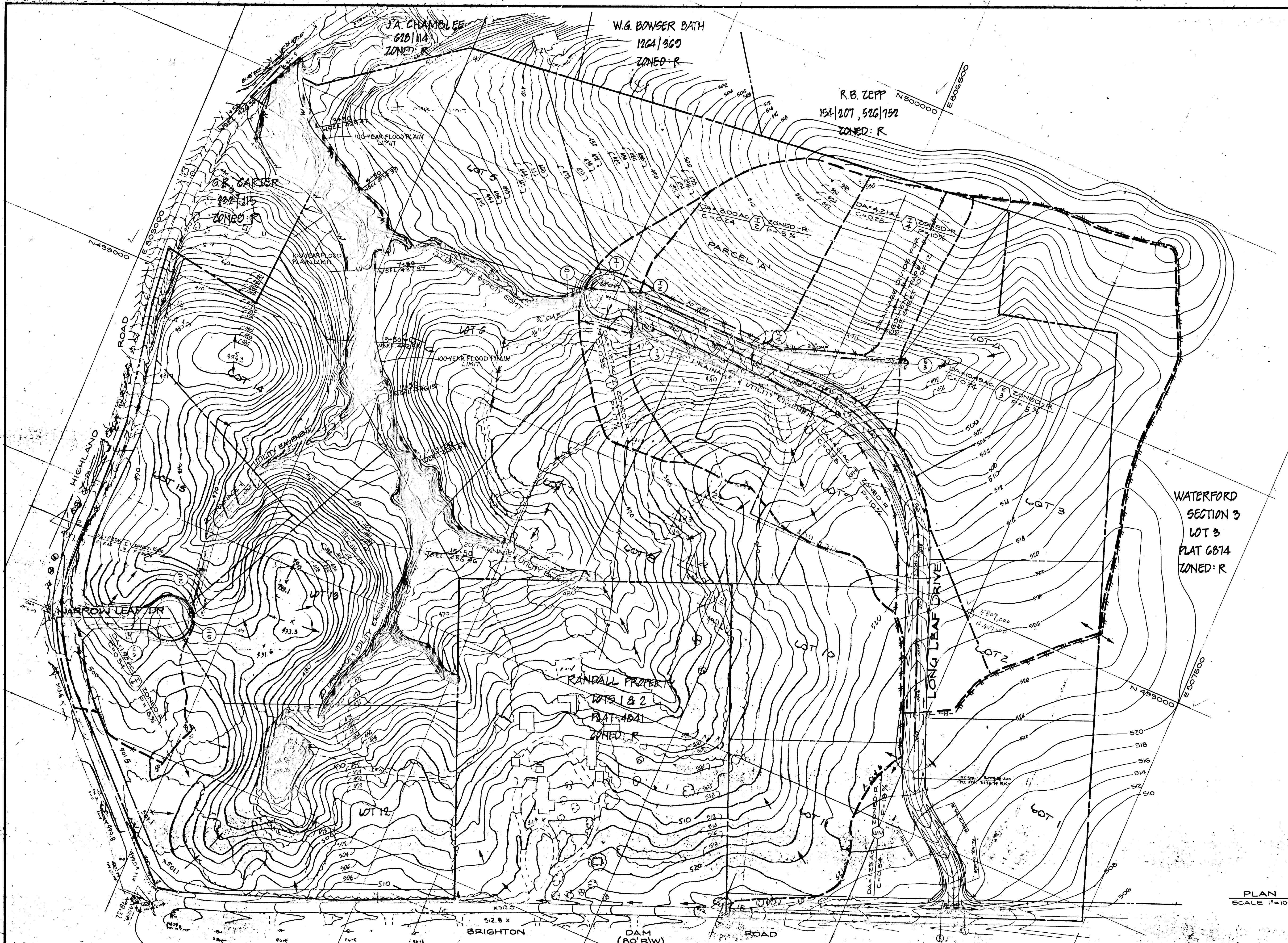
PLAN & PROFILE
 LONG LEAF DRIVE
 STA. 13+50 TO STA. 17+63
 NARROW LEAF DRIVE
 STA. 0+00 TO STA. 2+50

OWNER/DEVELOPER
 ROBERT DEVELOPMENT CORP.
 122550 ROCKVILLE PIKE STE. 250
 ROCKVILLE, MARYLAND 20852
 (301) 770-7888

SCALE AS NOTED DATE: MAY 20, 1988 SHEET 7 OF 12
 DESIGNED BY: F. LIN DRAWN BY: C. L. DAVIS CHECKED BY: _____
 C. L. DAVIS & DAVIS
 ENGINEERS ARCHITECTS PLANNERS SURVEYORS
 3300 NORTH RIDGE ROAD
 ELLICOTT CITY, MARYLAND 21043
 (301) 461-7478



1394



ENGINEER'S CERTIFICATE
 I HEREBY CERTIFY THAT THIS PLAN FOR EROSION AND SEDIMENT CONTROL REPRESENTS A PRACTICAL AND WORKABLE PLAN BASED ON MY PERSONAL KNOWLEDGE OF THE SITE CONDITIONS AND THAT IT WAS PREPARED IN ACCORDANCE WITH THE REQUIREMENTS OF THE HOWARD SOIL CONSERVATION DISTRICT.

Thomas L. Wiley 11-8-88
 THOMAS L. WILEY, MD. REG. NO. 9273 DATE

DEVELOPER'S CERTIFICATE
 I/WE CERTIFY THAT ALL DEVELOPMENT AND CONSTRUCTION WILL BE DONE ACCORDING TO THIS PLAN OF DEVELOPMENT AND PLAN FOR EROSION AND SEDIMENT CONTROL AND THAT ALL RESPONSIBLE PERSONNEL INVOLVED IN THE CONSTRUCTION PROJECT WILL HAVE A CERTIFICATE OF ATTENDANCE AT A DEPARTMENT OF NATURAL RESOURCES APPROVED TRAINING PROGRAM FOR THE CONTROL OF SEDIMENT AND EROSION BEFORE BEGINNING THE PROJECT. I ALSO AUTHORIZE PERIODIC ON-SITE INSPECTION BY THE HOWARD SOIL CONSERVATION DISTRICT OR THEIR AUTHORIZED AGENTS, AS ARE DEEMED NECESSARY.

James M. Taylor 11/7/88
 REVIEWED FOR HOWARD COUNTY SOIL CONSERVATION DISTRICT AND MEETS TECHNICAL REQUIREMENTS.
 JAMES M. TAYLOR 11-15-88
 S.S. SOIL CONSERVATION SERVICE DATE

THIS DEVELOPMENT IS APPROVED FOR EROSION AND SEDIMENT CONTROL BY THE HOWARD SOIL CONSERVATION DISTRICT.
 APPROVED:
John H. Roberts 11/14/88
 DISTRICT CHIEF, HOWARD SOIL CONSERVATION DISTRICT DATE

APPROVED: DEPARTMENT OF PUBLIC WORKS.
James C. ... 12/1/88
 CHIEF, LAND DEVELOPMENT DIVISION DATE

Dr. ... 12/12/88
 CHIEF, BUREAU OF HIGHWAYS DATE

... 12-13-88
 CHIEF, BUREAU OF ENGINEERING DATE

APPROVED: OFFICE OF PLANNING AND ZONING
Mark ... 12-20-88
 CHIEF, DIVISION OF COMMUNITY PLANNING AND LAND DEVELOPMENT DATE

LEGEND

	DRAINAGE DIVIDE
	DRAINAGE LIMIT FOR SEDIMENT TRAP #1

PLAN SCALE 1"=100'

DESIGNED		DATE		BY		DESCRIPTION	
F. LIN	5/20/88	8-12-88	P.M.B.	REVISED ROAD, ADDED DRAIN, UTILITY EMBANK			
DRAWN		DATE		BY		DESCRIPTION	
M. SWADNER	6/20/88						
CHECKED		DATE		BY		DESCRIPTION	
B.D. BURTON	6/20/88						
APPROVED		DATE		BY		DESCRIPTION	
T.L. WILEY	6/20/88						

Dewberry & Davis
 ENGINEERS — ARCHITECTS — PLANNERS — SURVEYORS
 3300 N. RIDGE ROAD, SUITE 100
 ELLICOTT CITY, MD. 21043
 (301) 461-7478



OWNER / DEVELOPER
 ROBERT DEVELOPMENT CORP.
 12250 ROCKVILLE PIKE, STE. 250
 ROCKVILLE, MARYLAND 20852
 (301) 770-7566

DRAINAGE AREA MAP
HIGHLAND MEADOWS
 SECTION ONE
 LOTS 1-15 AND PARCEL 'A'
 5TH ELECTION DISTRICT, HOWARD CO MD

1394

ENGINEER'S CERTIFICATE
 I CERTIFY THAT THIS PLAN FOR EROSION AND SEDIMENT CONTROL REPRESENTS A PRACTICAL AND WORKABLE PLAN BASED ON MY PERSONAL KNOWLEDGE OF THE SITE CONDITIONS AND THAT IT WAS PREPARED IN ACCORDANCE WITH THE REQUIREMENTS OF THE HOWARD SOIL CONSERVATION DISTRICT.

Thomas L. Wiley 11-8-88
 THOMAS L. WILEY, MD. REG. # 9273 DATE

DEVELOPER'S CERTIFICATE
 I/WE CERTIFY THAT ALL DEVELOPMENT AND CONSTRUCTION WILL BE DONE ACCORDING TO THIS PLAN OF DEVELOPMENT AND PLAN FOR EROSION AND SEDIMENT CONTROL AND THAT ALL RESPONSIBLE PERSONNEL INVOLVED IN THE CONSTRUCTION PROJECT WILL HAVE A CERTIFICATE OF ATTENDANCE AT A DEPARTMENT OF NATURAL RESOURCES APPROVED TRAINING PROGRAM FOR THE CONTROL OF SEDIMENT AND EROSION BEFORE BEGINNING THE PROJECT. I ALSO AUTHORIZE PERIODIC ON-SITE INSPECTION BY THE HOWARD SOIL CONSERVATION DISTRICT OR THEIR AUTHORIZED AGENTS, AS ARE DEEMED NECESSARY.

James A. Chamberlee 11/7/88
 JAMES A. CHAMBERLEE, DATE

APPROVED FOR HOWARD COUNTY SOIL CONSERVATION DISTRICT AND MEETS TECHNICAL REQUIREMENTS.
James A. Chamberlee 11-15-88
 JAMES A. CHAMBERLEE, DATE

APPROVED FOR EROSION AND SEDIMENT CONTROL BY THE HOWARD SOIL CONSERVATION DISTRICT.
John H. Roberts 11/14/88
 JOHN H. ROBERTS, DATE

APPROVED: DEPARTMENT OF PUBLIC WORKS.
William H. Hagan 12/8/88
 WILLIAM H. HAGAN, DATE

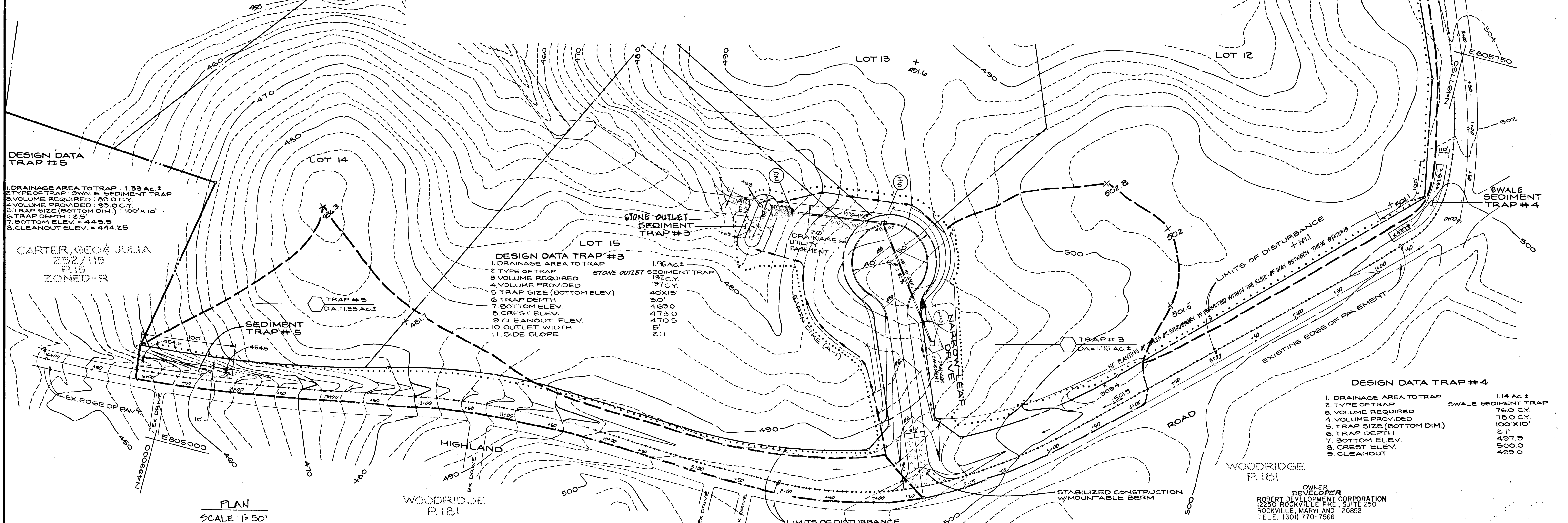
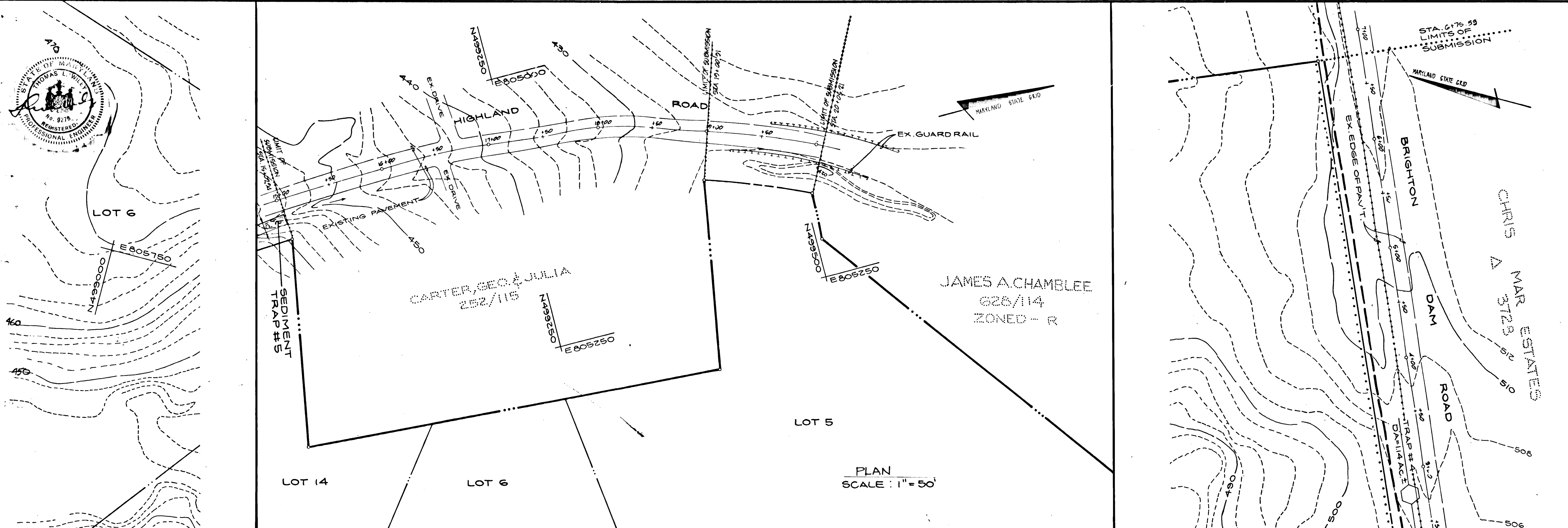
CHIEF, LAND DEVELOPMENT DIV.
Shawverle W. McLeod 12/11/88
 SHAWVERLE W. McLEOD, DATE

CHIEF, BUREAU OF HIGHWAYS
William S. Giam 12-15-88
 WILLIAM S. GIAM, DATE

CHIEF, BUREAU OF ENGINEERING
William S. Giam 12-15-88
 WILLIAM S. GIAM, DATE

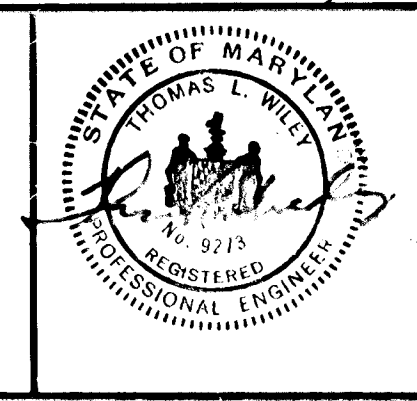
APPROVED: OFFICE OF PLANNING AND ZONING
Frank J. DeAngelis 12-20-88
 FRANK J. DEANGELIS, DATE

CHIEF, DIVISION OF COMMUNITY PLANNING AND LAND DEVELOPMENT



DESIGNED		DATE		BY		DESCRIPTION	
DATE	BY	DATE	BY	DATE	BY	DATE	BY
8-12-88	L.M.D.						
DATE	BY	DATE	BY	DATE	BY	DATE	BY
DATE	BY	DATE	BY	DATE	BY	DATE	BY

Dewberry & Davis
 ENGINEERS — ARCHITECTS — PLANNERS — SURVEYORS
 3300 N. RIDGE ROAD, SUITE 100
 ELLICOTT CITY, MD. 21043
 (301) 461-7478



OWNER
 DEVELOPER
 ROBERT DEVELOPERS CORPORATION
 12250 ROCKVILLE PIKE, SUITE 230
 ROCKVILLE, MARYLAND 20852
 TELE. (301) 770-7566

SEDIMENT CONTROL & GRADING PLAN
 HIGHLAND MEADOWS
 SECTION ONE
 LOTS 1-15 & PARCELS A
 5TH ELECTION DISTRICT HOWARD CO. MD.

SCALE: 1" = 50'
 CONTRACT NO. _____
 FILE NO. 8004-ec
 SHEET 9 OF 12

1304

ENGINEER'S CERTIFICATE

I HEREBY CERTIFY THAT THIS PLAN FOR EROSION AND SEDIMENT CONTROL REPRESENTS A PRACTICAL AND WORKABLE PLAN BASED ON MY PERSONAL KNOWLEDGE OF THE SITE CONDITIONS AND THAT IT WAS PREPARED IN ACCORDANCE WITH THE REQUIREMENTS OF THE HOWARD SOIL CONSERVATION DISTRICT.

Thomas L. Wiley, M.D. REG. NO. 9173 DATE 11-8-88

DEVELOPER'S CERTIFICATE

I/WE CERTIFY THAT ALL DEVELOPMENT AND CONSTRUCTION WILL BE DONE ACCORDING TO THIS PLAN OF DEVELOPMENT AND PLAN FOR EROSION AND SEDIMENT CONTROL AND THAT ALL RESPONSIBLE PERSONNEL INVOLVED IN THE CONSTRUCTION PROJECT WILL HAVE A CERTIFICATE OF ATTENDANCE AT A DEPARTMENT OF NATURAL RESOURCES APPROVED TRAINING PROGRAM FOR THE CONTROL OF SEDIMENT AND EROSION BEFORE BEGINNING THE PROJECT. I ALSO AUTHORIZE PERIODIC ON-SITE INSPECTION BY THE HOWARD SOIL CONSERVATION DISTRICT OR THEIR AUTHORIZED AGENTS, AS ARE DEEMED NECESSARY.

James M. Foot DATE 11/1/88

REVIEWED FOR HOWARD COUNTY SOIL CONSERVATION DISTRICT AND MEETS TECHNICAL REQUIREMENTS.

John H. Hester DATE 11-15-88

THIS DEVELOPMENT IS APPROVED FOR EROSION AND SEDIMENT CONTROL BY THE HOWARD SOIL CONSERVATION DISTRICT.

APPROVED: JOHN H. HESTER DATE 11/14/88

DISTRICT HOWARD SOIL CONSERVATION DISTRICT

APPROVED: DEPARTMENT OF PUBLIC WORKS. DATE 12/1/88

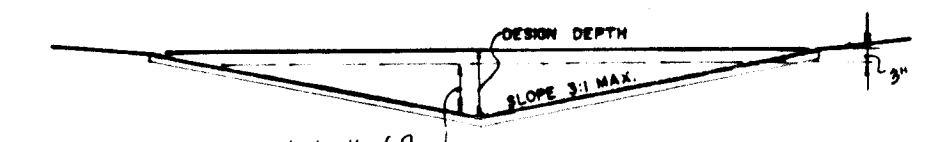
APPROVED: DATE 12/12/88

APPROVED: DATE 12-13-88

APPROVED: OFFICE OF PLANNING AND ZONING

DATE 12-22-88

PLANNING AND LAND DEVELOPMENT

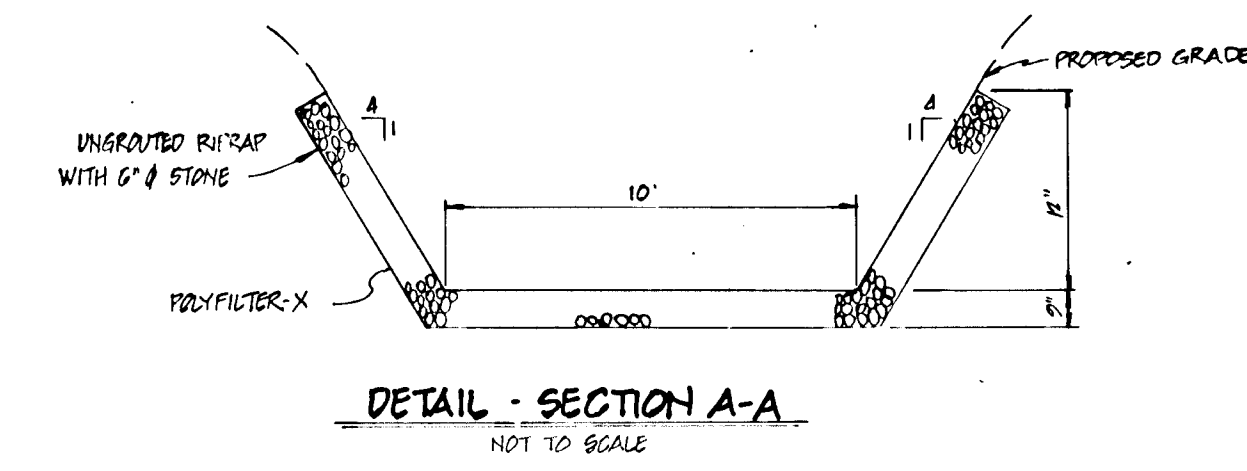


SODDED TRIANGULAR DITCH LINING DETAIL NOT TO SCALE

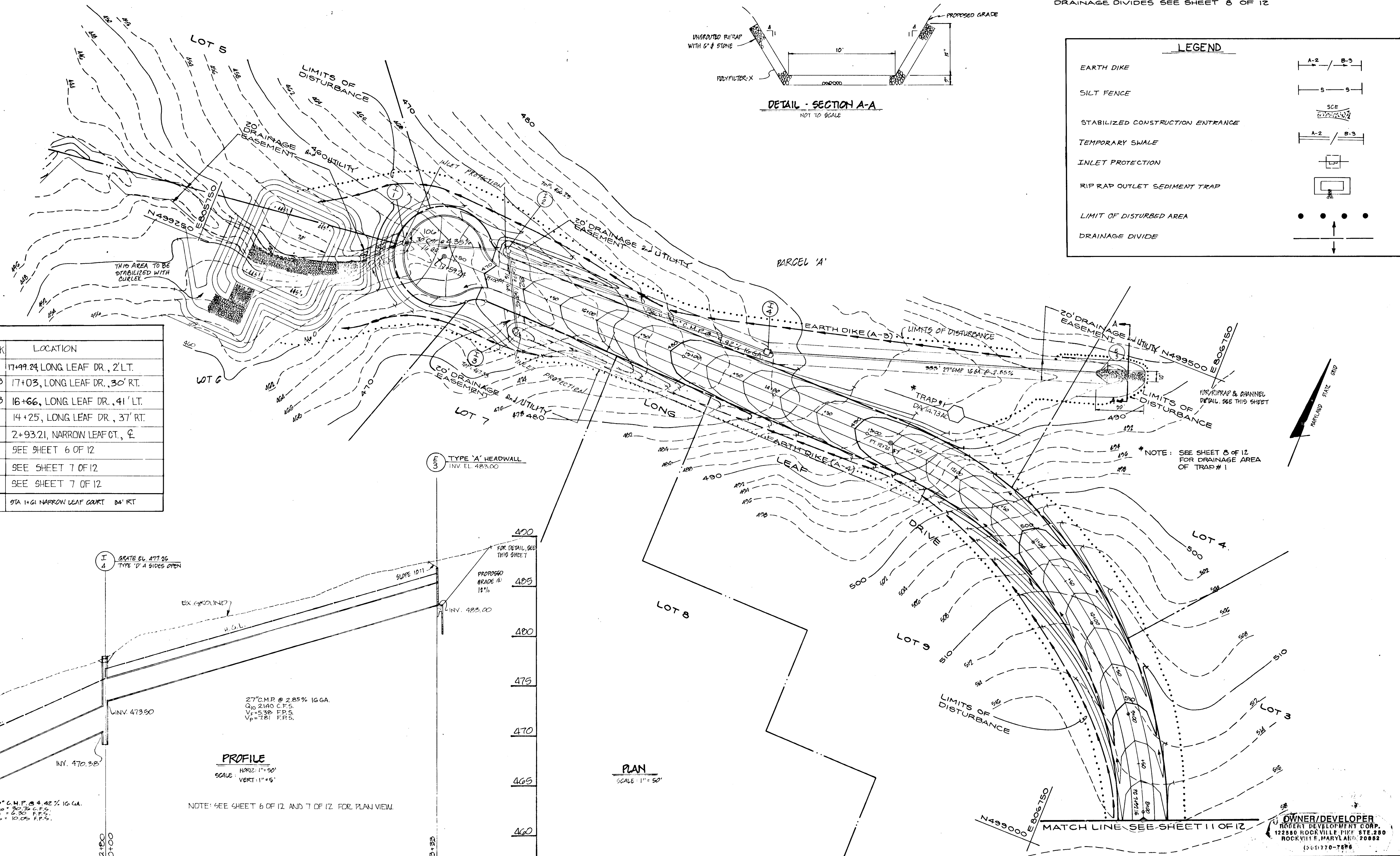
STA 15+00 TO STA 17+50 BRIGHTON DAM ROAD A=0.0' STA 2+50 TO STA 15+00 HIGHLAND ROAD A=0.25'

DESIGN DATA TRAP #1 table with 11 rows and 2 columns: 1. DRAINAGE AREA TO TRAP (14.75 AC.), 2. TYPE OF TRAP (RIP RAP OUTLET SEDIMENT TRAP), 3. VOLUME REQUIRED (987 C.Y.), 4. VOLUME PROVIDED (997 C.Y.), 5. TRAP SIZE (BOTTOM DIMENSION) (80' x 10'), 6. TRAP DEPTH (4'), 7. BOTTOM ELEV. (445.0), 8. CREST ELEV. (491.0), 9. CLEANOUT ELEV. (447.0), 10. OUTLET WIDTH (24'), 11. SIDE SLOPES (2:1)

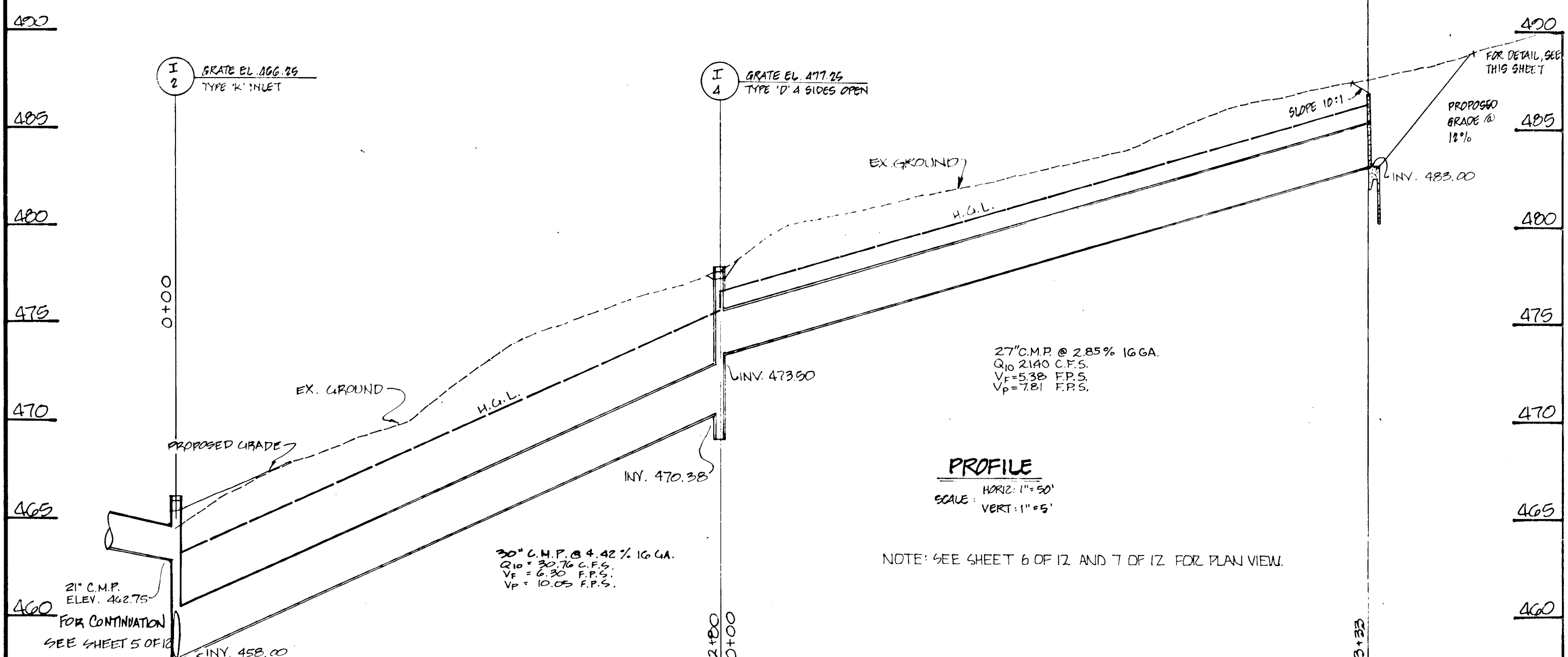
NOTE: DRAINAGE DIVIDES SEE SHEET 8 OF 12



LEGEND table with 8 rows: EARTH DIKE (A-2/B-3), SILT FENCE (5-5), STABILIZED CONSTRUCTION ENTRANCE (SEE DETAIL), TEMPORARY SWALE (A-2/B-3), INLET PROTECTION (L-1), RIP RAP OUTLET SEDIMENT TRAP, LIMIT OF DISTURBED AREA (Dotted line), DRAINAGE DIVIDE (Dashed line)

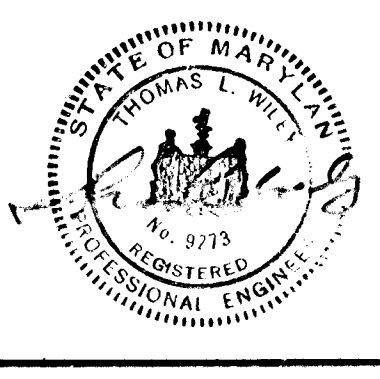


STRUCTURE SCHEDULE table with 11 rows: I1 A5 INLET, I2 K INLET, I3 K INLET, I4 D INLET, I5 A5, E3 TYPE A HEADWALL, S1 METAL END SECTION, S2 METAL END SECTION, I6 YARD D INLET



REVISIONS table with 5 rows: DESIGNED (FL/H.S.), DRAWN (WDG), CHECKED (D.P.), APPROVED (T.L.W.)

Dewberry & Davis ENGINEERS - ARCHITECTS - PLANNERS - SURVEYORS 3300 N. RIDGE ROAD, SUITE 100 ELLICOTT CITY, MD. 21043 (301) 461-7478

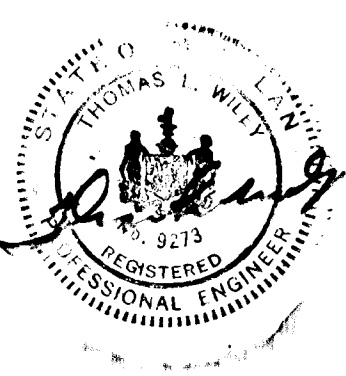


OWNER / DEVELOPER ROBERT DEVELOPMENT CORPORATION 122550 ROCKVILLE PIKE STE. 250 ROCKVILLE MARYLAND 20852 (301) 770-7566

SEDIMENT CONTROL & GRADING PLAN HIGHLAND MEADOWS SECTION ONE LOTS 1-15 & PARCEL 'A' 5TH ELECTION DISTRICT HOWARD CO. MD.

I HEREBY CERTIFY THAT THIS PLAN FOR EROSION AND SEDIMENT CONTROL REPRESENTS A PRACTICAL AND WORKABLE PLAN BASED ON MY PERSONAL KNOWLEDGE OF THE SITE CONDITIONS AND THAT IT WAS PREPARED IN ACCORDANCE WITH THE REQUIREMENTS OF THE HOWARD SOIL CONSERVATION DISTRICT.

Thomas L. Wiley 11-8-88
 THOMAS L. WILEY, MD. NO. 4273 DATE



DEVELOPER'S CERTIFICATE

"I/WE CERTIFY THAT ALL DEVELOPMENT AND CONSTRUCTION WILL BE DONE ACCORDING TO THIS PLAN OF DEVELOPMENT AND PLAN FOR EROSION AND SEDIMENT CONTROL AND THAT ALL RESPONSIBLE PERSONNEL INVOLVED IN THE CONSTRUCTION PROJECT WILL HAVE A CERTIFICATE OF ATTENDANCE AT A DEPARTMENT OF NATURAL RESOURCES APPROVED TRAINING PROGRAM FOR THE CONTROL OF SEDIMENT AND EROSION BEFORE BEGINNING THE PROJECT. I ALSO AUTHORIZE PERIODIC ON-SITE INSPECTION BY THE HOWARD SOIL CONSERVATION DISTRICT OR THEIR AUTHORIZED AGENTS, AS ARE DEEMED NECESSARY."

Thomas L. Wiley 11/3/88

REVIEWED FOR HOWARD COUNTY SOIL CONSERVATION DISTRICT AND MEETS TECHNICAL REQUIREMENTS.

James H. Adams 11-15-88
 DISTRICT SOIL CONSERVATION SERVICE DATE

THIS DEVELOPMENT IS APPROVED FOR EROSION AND SEDIMENT CONTROL BY THE HOWARD SOIL CONSERVATION DISTRICT.

John R. Roberts 11/14/88
 DISTRICT HOWARD SOIL CONSERVATION DISTRICT DATE

APPROVED: DEPARTMENT OF PUBLIC WORKS.

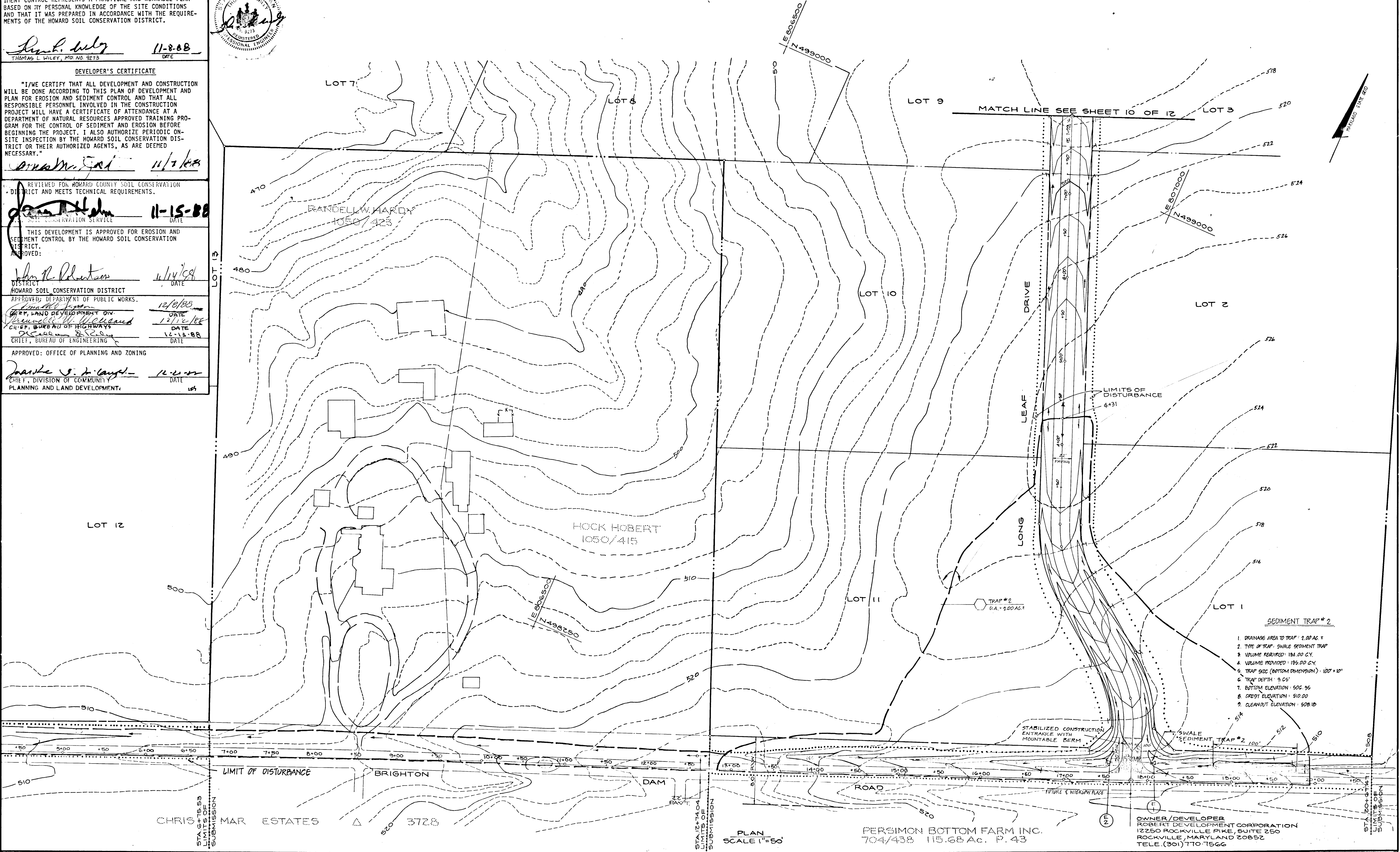
James M. Johnson 12/8/88
 DEPT. LAND DEVELOPMENT DIV. DATE

James M. Johnson 12/12/88
 CHIEF, BUREAU OF HIGHWAYS DATE

Thomas L. Wiley 12-13-88
 CHIEF, BUREAU OF ENGINEERING DATE

APPROVED: OFFICE OF PLANNING AND ZONING

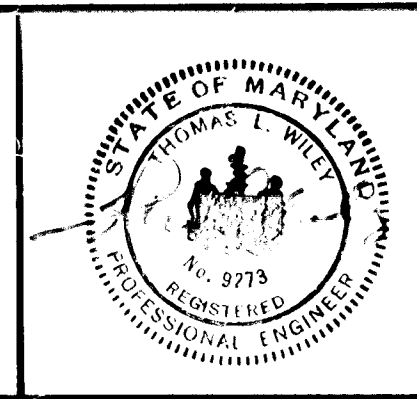
James M. Johnson 12-22-88
 CHIEF, DIVISION OF COMMUNITY PLANNING AND LAND DEVELOPMENT DATE



- SEDIMENT TRAP # 2**
1. DRAINAGE AREA TO TRAP: 2.00 AC. ±
 2. TYPE OF TRAP: SWALE SEDIMENT TRAP
 3. VOLUME REQUIRED: 184.00 CY.
 4. VOLUME PROVIDED: 185.00 CY.
 5. TRAP SIZE (BOTTOM DIMENSION): 100' x 10'
 6. TRAP DEPTH: 9.05'
 7. BOTTOM ELEVATION: 509.95
 8. CREST ELEVATION: 510.00
 9. CLEANOUT ELEVATION: 508.10

DESIGNED		DATE		BY		DESCRIPTION	
FLIN	5-88	8-12-88	WRL	REV. ENTRANCE LAYOUT & ALIGNMENT AS PER COUNTY			
M.S.	5-88						
W.C.	5-88						
W.D.G.	5-88						
DRAWN		DATE		BY		DESCRIPTION	
CHECKED		DATE		BY		DESCRIPTION	
APPROVED		DATE		BY		DESCRIPTION	

Dewberry & Davis
 ENGINEERS — ARCHITECTS — PLANNERS — SURVEYORS
 3300 N. RIDGE ROAD, SUITE 100
 ELLICOTT CITY, MD. 21043
 (301) 461-7478



PERSIMON BOTTOM FARM INC.
 704/438 115.68 AC. P. 43

SEDIMENT CONTROL & GRADING PLAN
HIGHLAND MEADOWS
 SECTION ONE LOTS 1 THRU 15 & PARCEL 'A'
 5TH ELECTION DISTRICT, HOWARD CO. MD.
 DATE: MAY 20, 1988

1304

