

**GENERAL NOTES**

1. ALL WORK SHALL BE DONE IN ACCORDANCE WITH HOWARD COUNTY STANDARDS, SPECIFICATIONS AND DETAILS FOR CONSTRUCTION.
2. ALL UTILITY COMPANIES MUST BE NOTIFIED 24 HRS IN ADVANCE OF ANY CONSTRUCTION.
3. STORM DRAINAGE TRENCHES WITHIN ROAD RIGHT-OF-WAYS SHALL BE BACKFILLED AND COMPACTED IN ACCORDANCE WITH HOWARD COUNTY ROAD CODE.
4. ANY DAMAGE TO PUBLIC RIGHT-OF-WAYS, PAVING, OR EXISTING UTILITIES WILL BE CORRECTED AT THE CONTRACTORS EXPENSE.
5. CONTRACTOR TO NOTIFY THE HOWARD COUNTY INSPECTION AND SURVEY DIVISION AT LEAST 3 DAYS BEFORE STARTING WORK SHOWN ON THESE DRAWINGS TELEPHONE 792-7272.
6. APPROXIMATE LOCATION OF EXISTING UTILITIES ARE SHOWN FOR THE CONTRACTOR'S INFORMATION. CONTRACTOR SHALL LOCATE EXISTING UTILITIES WELL IN ADVANCE OF CONSTRUCTION ACTIVITIES AND TAKE ALL NECESSARY PRECAUTIONS TO PROTECT THE EXISTING UTILITIES AND TO MAINTAIN UNINTERRUPTED SERVICE.
7. ALL TRAFFIC CONTROL DEVICES SHALL BE INSTALLED IN ACCORDANCE WITH THE MANUAL OF UNIFORM TRAFFIC CONTROL DEVICES CURRENT REVISED EDITION.
8. THE GRADING INDICATED HEREON IS FOR ROAD CONSTRUCTION ONLY. FUTURE GRADING FOR DEVELOPMENT PURPOSES WILL NOT CREATE LOTS LESS THAN THE MINIMUM LOT SIZE ALLOWED AS DEFINED IN ZONING REGULATIONS SECTION 103.A.67

**1st CURVE DATA**

Sta 1+95.72 To Sta. 1+64.12  
 R = 62500'  
 L = 840'  
 Δ = 00°46'10"  
 T = 4.20'  
 CHD = 58642.98'-W  
 840'

**2nd CURVE DATA**

Sta 2+64.12 To Sta. 7+29.12  
 R = 82500'  
 L = 16500'  
 Δ = 32°17'38"  
 T = 238.86'  
 CHD = N 76°41'23"W  
 458.87'

Street lights  
 1-17" w/ "Modern" mercury vapor lamp  
 Post top fixture on a 14-foot gray  
 fiberglass pole, located 2'-10" from  
 back of curb at the following  
 location: @ Sta. 2+15.00



APPROVED DEPARTMENT OF PUBLIC WORKS  
 Chief, Land Development Division  
 Date: 9/28/88

APPROVED  
 Chief, Bureau of Highways  
 Date: 9/28/88

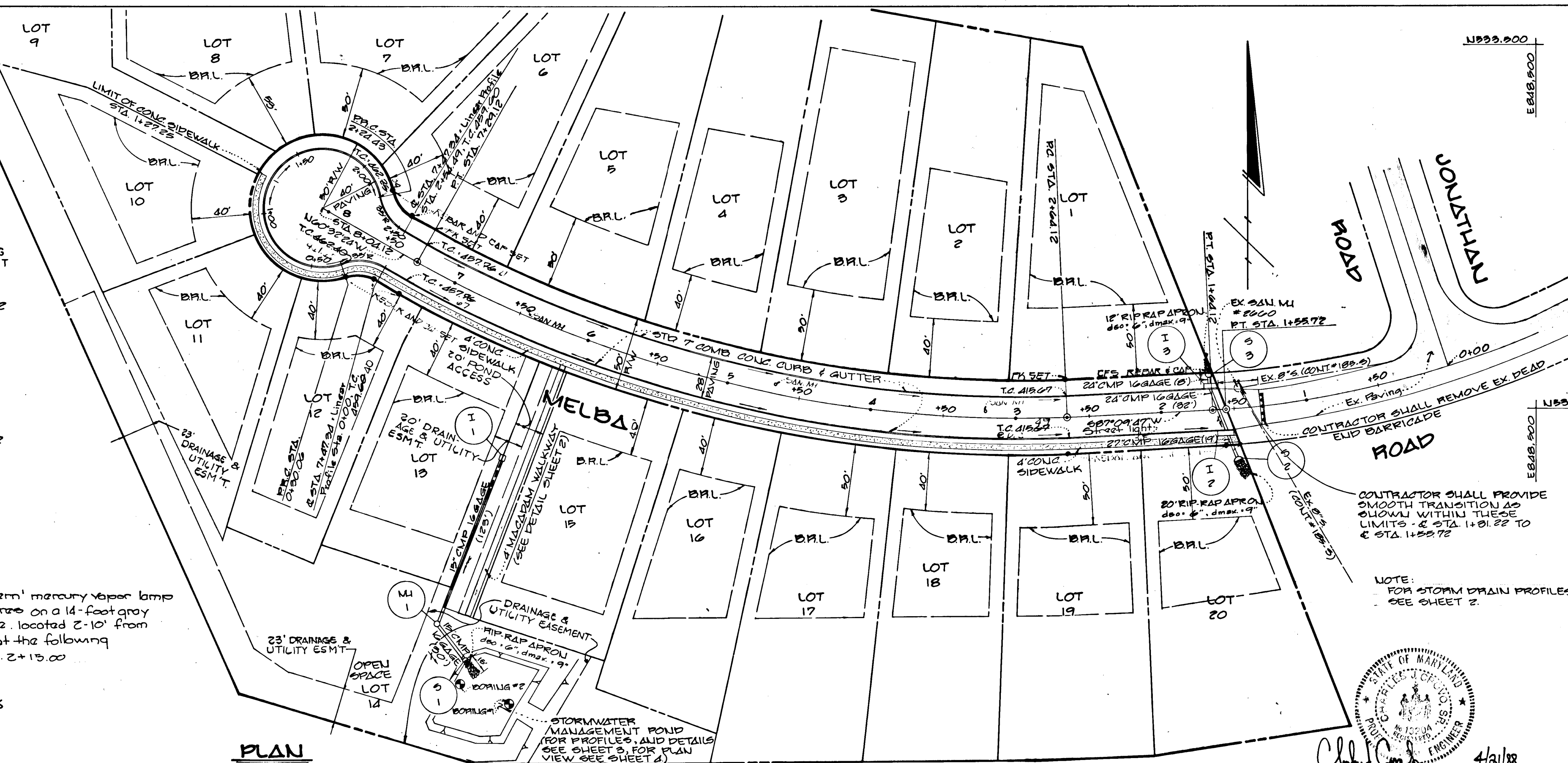
APPROVED  
 Chief, Bureau of Engineering  
 Date: 10-4-88

APPROVED OFFICE OF PLANNING AND ZONING  
 Date: 11-1-88

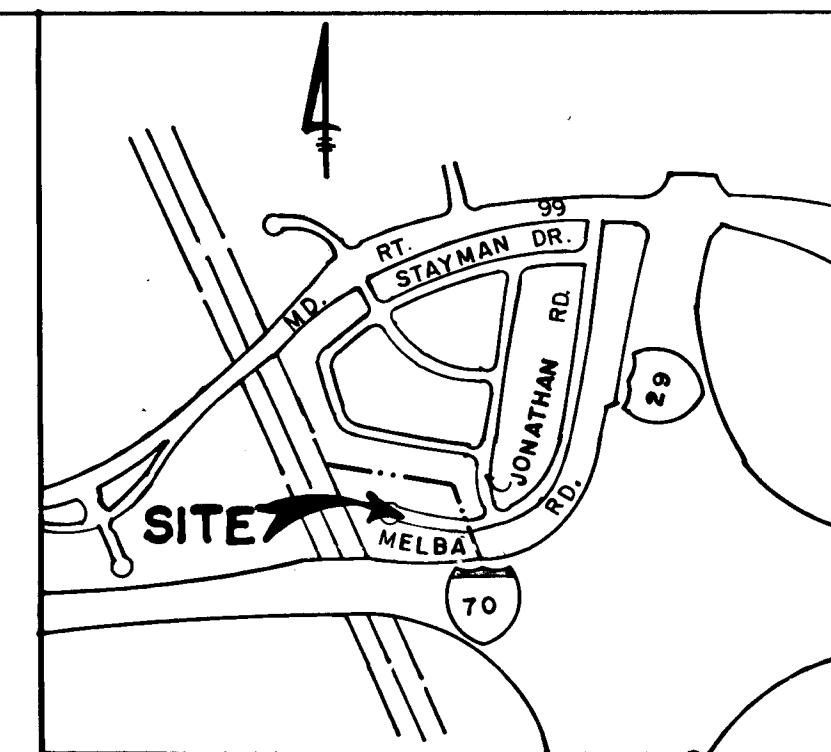
PLAN  
 SURVEYED  
 PLOTTED  
 CHECKED  
 RT. OF WAY CHECKED

PROFILE  
 SURVEYED  
 GRADES CHECKED  
 STRUCTURE NOTATIONS CHECKED

1385



**PLAN**  
 Scale: 1"=50'



**VICINITY MAP**

SCALE: 1"=1200'

**BENCH MARKS**

BM#1  
 1/2" Rebar set approximately 28" off of Rear  
 Lot Line in Lot #9 known as Traverse Point  
 #108. For Location See Sheet 2

BM#2  
 Cross-cut on Ex. San. M.I. #2660 Location at  
 The End of Existing Melba Road. For Location  
 See Sheet 2

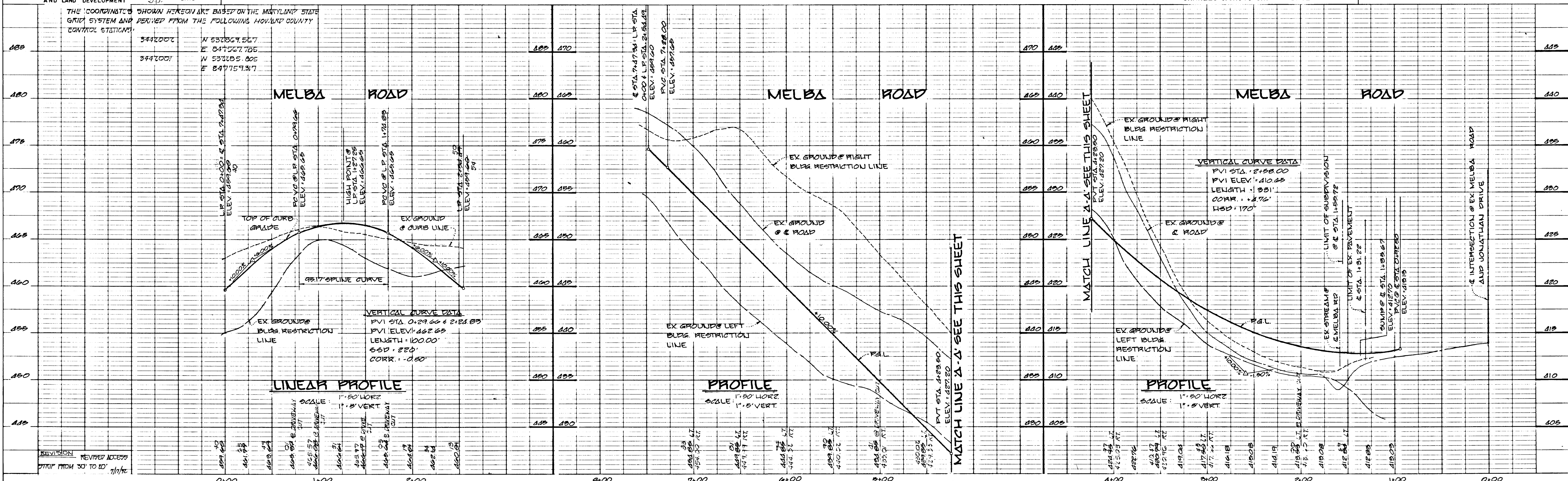
**ORCHARD VIEW**  
 LOTS 1-20  
 SECOND ELECTION DISTRICT  
 HOWARD COUNTY, MARYLAND

**MELBA ROAD**  
 PLAN AND PROFILE

OWNER AND DEVELOPER  
 DAMPMAN PROPERTY PARTNERSHIP  
 8307 MAIN STREET  
 ELLICOTT CITY, MARYLAND 21043

SCALE AS SHOWN DATE APR 22, 1987 DWG. NO. 1 OF 4  
 DES. D.VANDE RYT. DRN. C. BAUER CHK. C. CROVO SR.

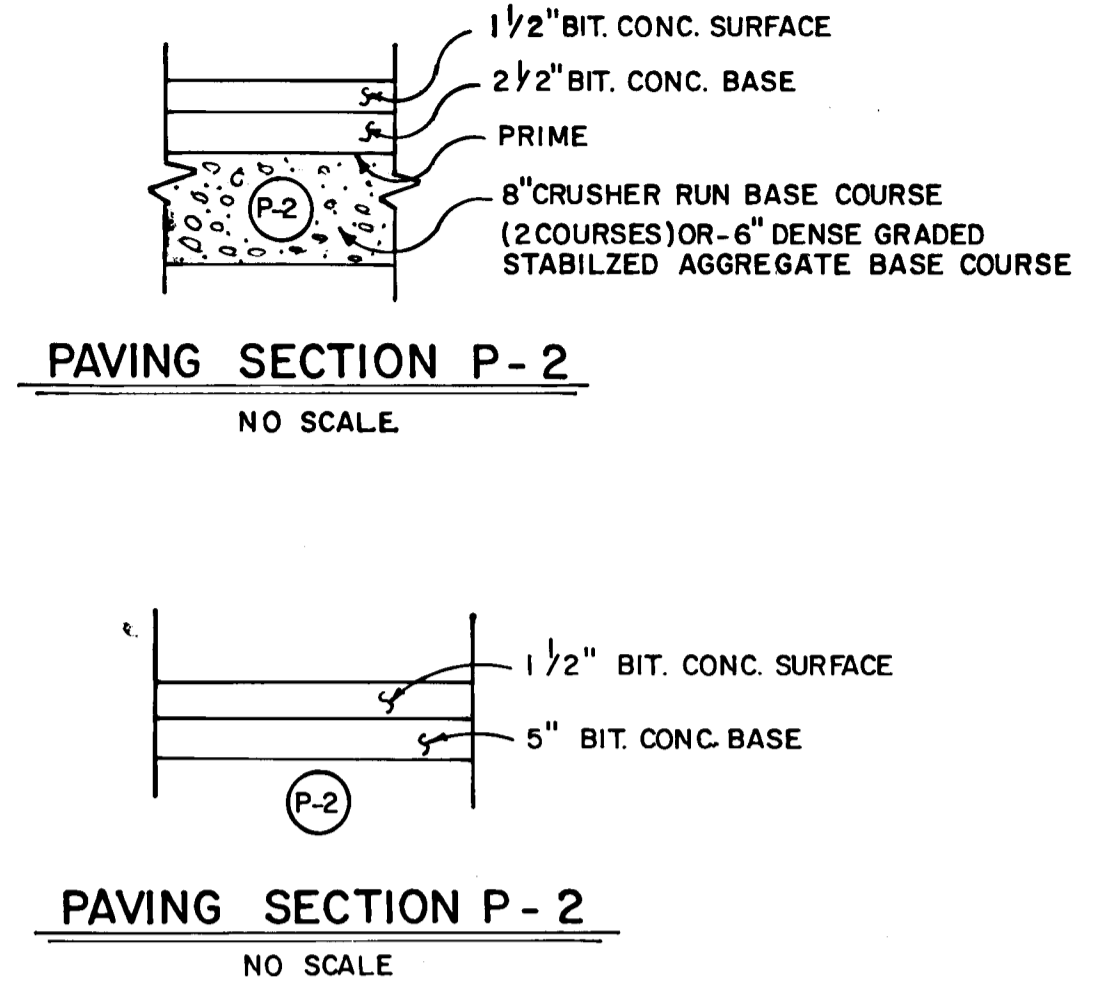
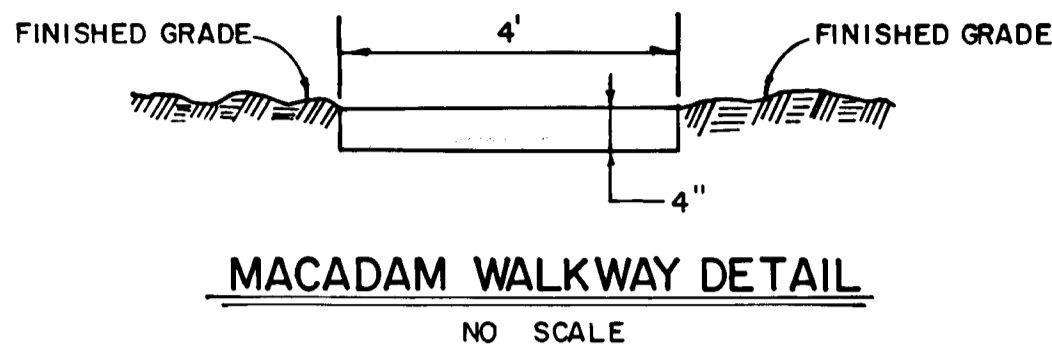
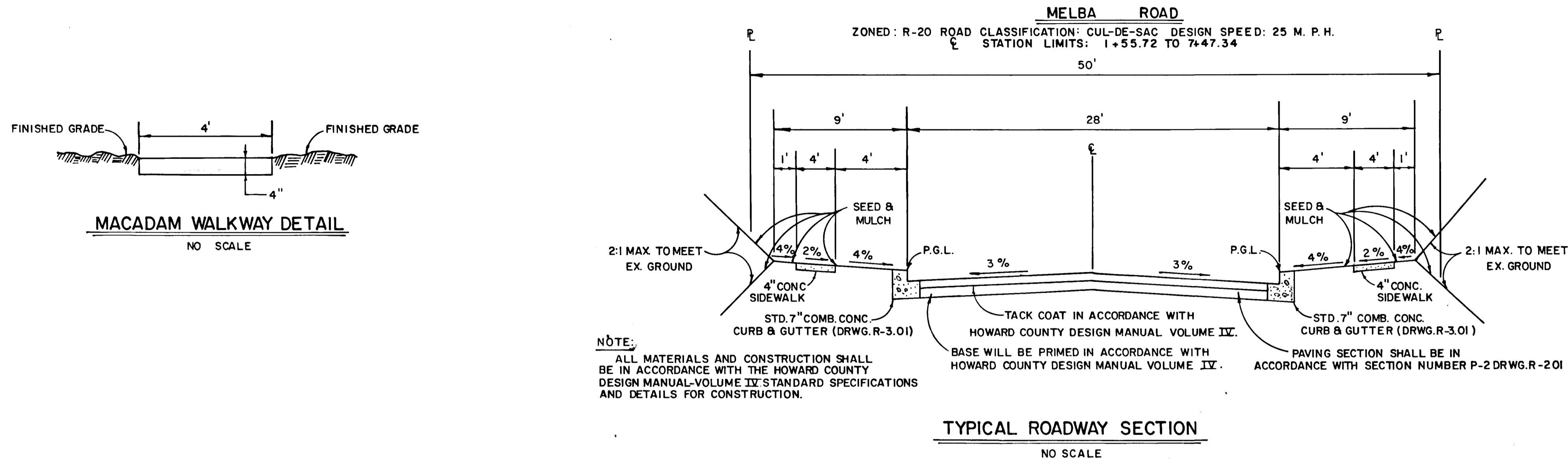
FISHER, COLLINS AND CARTER, INC.  
 CIVIL ENGINEERS AND LAND SURVEYORS  
 8388 COURT AVE. ELLICOTT CITY, MARYLAND 21043



**LINEAR PROFILE**  
 SCALE: 1"=50' HORIZ  
 1"=5' VERT

**PROFILE**  
 SCALE: 1"=50' HORIZ  
 1"=5' VERT

**PROFILE**  
 SCALE: 1"=50' HORIZ  
 1"=5' VERT

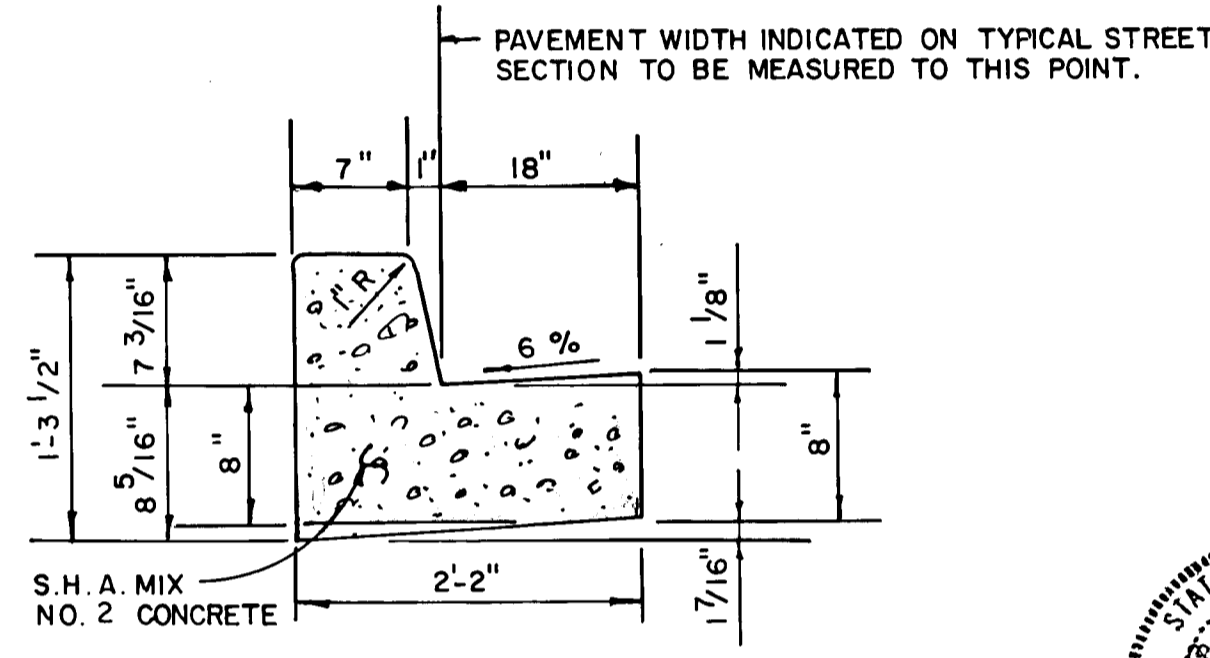


**NOTE:**  
 ALL MATERIALS AND CONSTRUCTION SHALL BE IN ACCORDANCE WITH THE HOWARD COUNTY DESIGN MANUAL-VOLUME IX STANDARD SPECIFICATIONS AND DETAILS FOR CONSTRUCTION.

TACK COAT IN ACCORDANCE WITH HOWARD COUNTY DESIGN MANUAL VOLUME IX.

BASE WILL BE PRIMED IN ACCORDANCE WITH HOWARD COUNTY DESIGN MANUAL VOLUME IX.

PAVING SECTION SHALL BE IN ACCORDANCE WITH SECTION NUMBER P-2 DRWG. R-201



APPROVED  
 DEPARTMENT OF PUBLIC WORKS  
*Small [Signature]* 9/27/88  
 CHIEF, LAND DEVELOPMENT DIVISION DATE

*Granville W. Weiland* 9/28/88  
 CHIEF, BUREAU OF HIGHWAYS DATE

*William E. Raley* 10-4-88  
 CHIEF, DIVISION OF ENGINEERS DATE

APPROVED  
 OFFICE OF PLANNING AND ZONING  
*Frank J. [Signature]* 11-6-88  
 CHIEF, DIVISION OF COMMUNITY PLANNING AND LAND DEVELOPMENT DATE

**ORCHARD VIEW**  
 LOTS 1-20  
 SECOND ELECTION DISTRICT  
 HOWARD COUNTY, MARYLAND

ROAD SECTION, DETAILS  
 AND  
 STORM DRAIN PROFILES

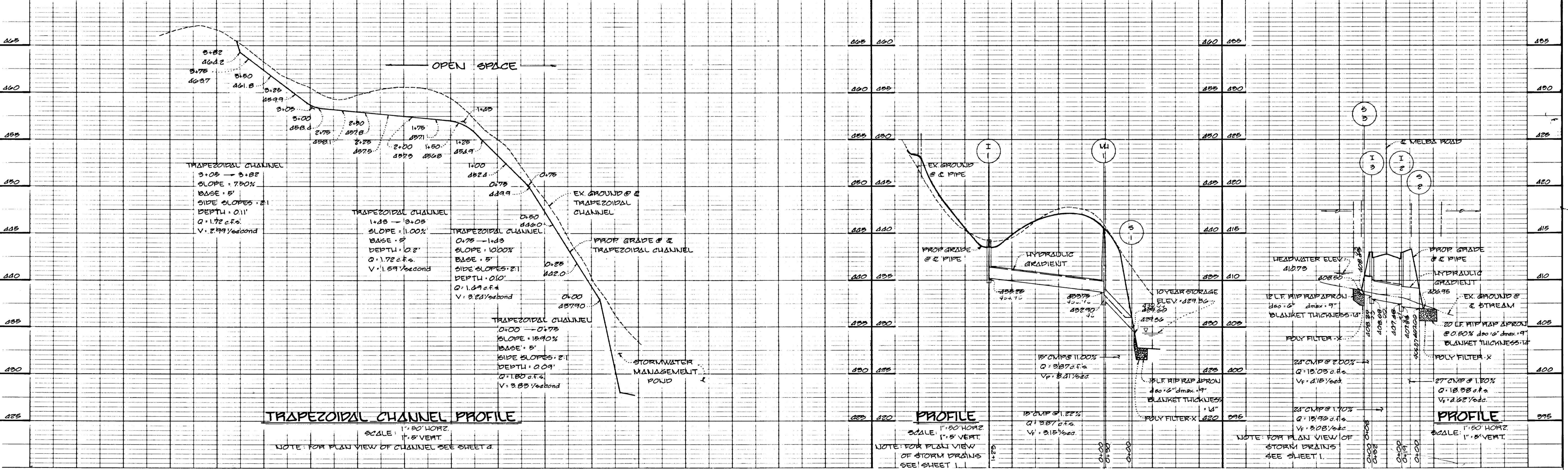
OWNER AND DEVELOPER  
**DAMPAN PROPERTY PARTNERSHIP**  
 8307 MAIN STREET  
 ELLICOTT CITY, MARYLAND 21043

SCALE AS SHOWN DATE APR 22, 1988 DWG. NO. 2 OF 4  
 DES. D. VANDE RYT DRN. C. BAUER CHK. C. CROVO SR.

**FISHER, COLLINS AND CARTER, INC.**  
 CIVIL ENGINEERS AND LAND SURVEYORS  
 8388 COURT AVE. ELLICOTT CITY, MARYLAND 21043

CHARLES J. CROVO SR. DATE 4/21/88

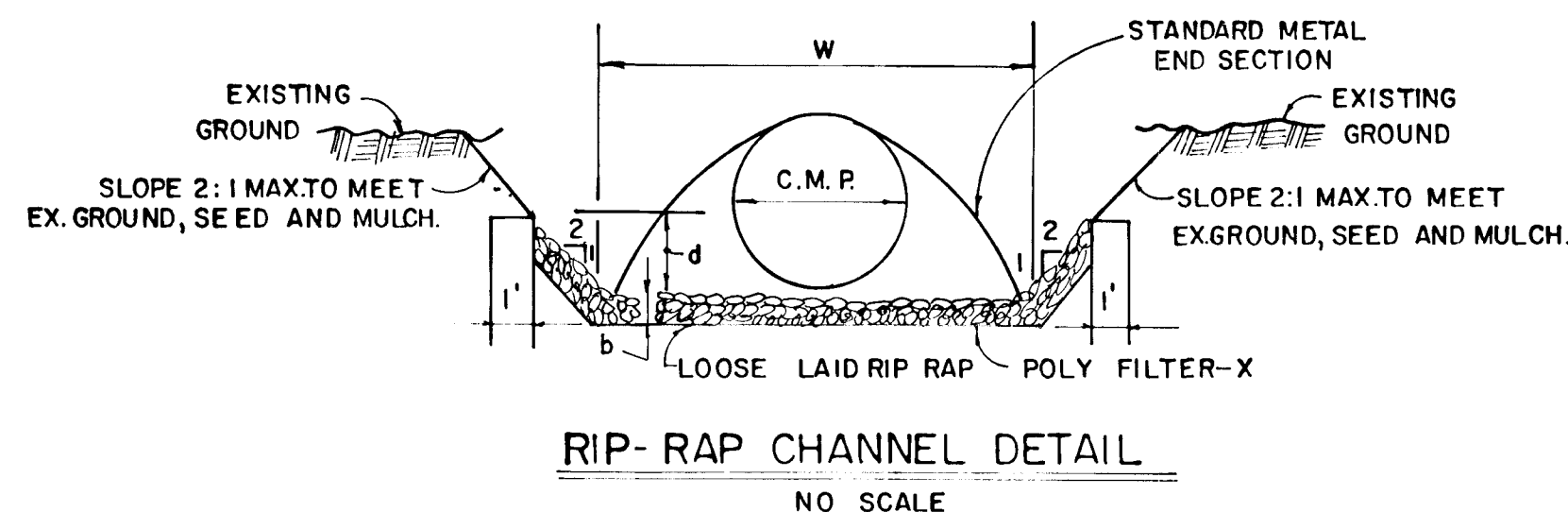
PROFILE SURVEYED, PLOTTED, GRADES CHECKED, STRUCTURE NOTATIONS CHFC, NOTE BOOK NO. 1385



1385

STRUCTURE SCHEDULE						
STRUCT.	TYPE	INV. IN.	INV. OUT	TOP ELEV.	ROAD STATION	REMARKS
I-1	4" INLET		435.25	439.33		S.D. 4.11
I-2	A-10	407.48	407.23	412.89	1+57.00 MELBA ROAD	S.D. 4.02
I-3	A-10	408.27	408.02	412.97	1+66.00 MELBA ROAD	S.D. 4.02
MH-1	STANDARD MANHOLE	433.75	432.90	440.55		6.5.01
S-1	STD. METAL END SECTION	429.60	429.36	430.85		S.D. 5.61
S-2	STD. METAL END SECTION	407.00	406.95	409.25		S.D. 5.61
S-3	STD. METAL END SECTION	408.50	408.43	410.43		S.D. 5.61

RIP RAP CHANNEL DESIGN DATA													
STRUCT	AREA	P	R	R2/3	S	S1/2	b	d	n	v	q	RIP RAP SIZE	BLANKET THICKNESS
S-2	8.5	10.97	.7747	.8428	0.50%	.0707	6.50'	1.00'	0.04	2.21	18.82	d50 dmax 6" 9"	14"

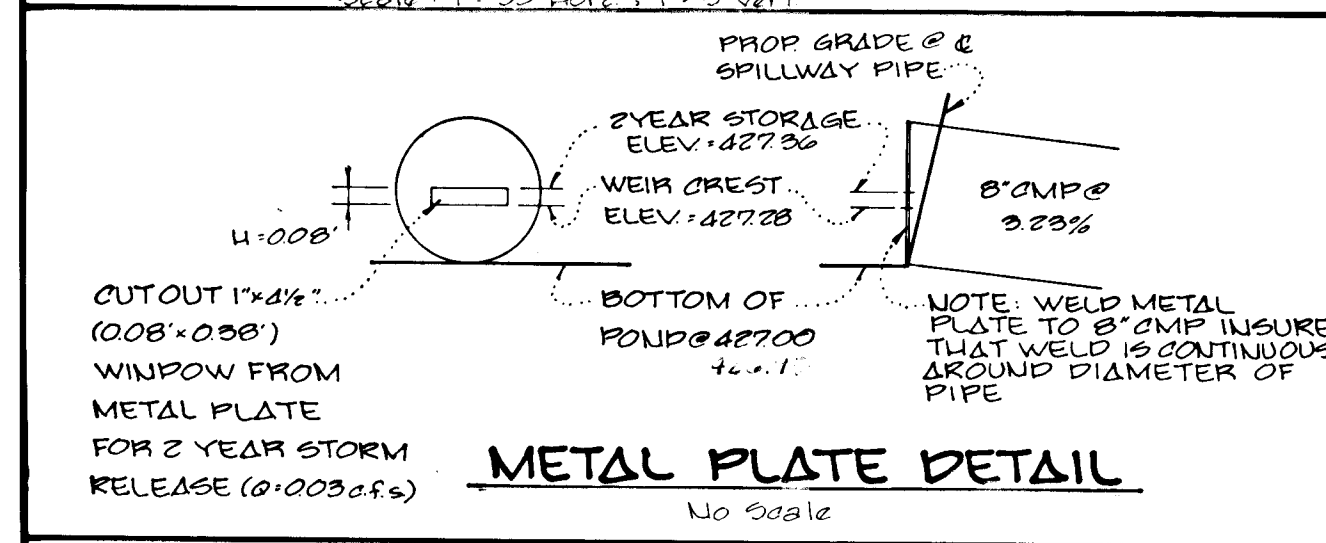
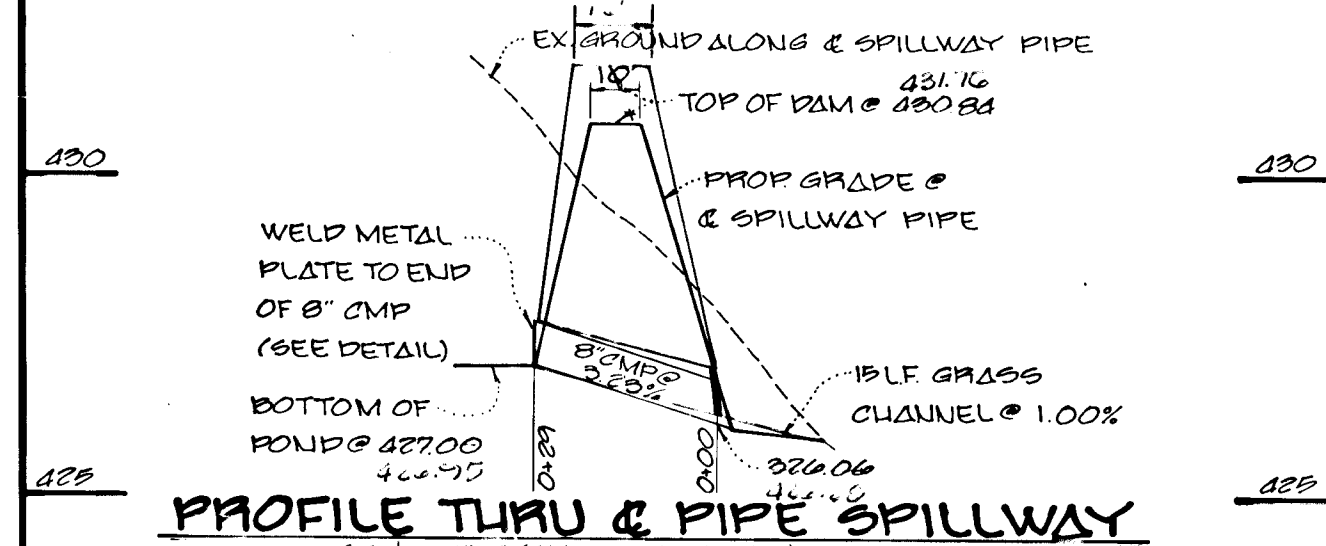
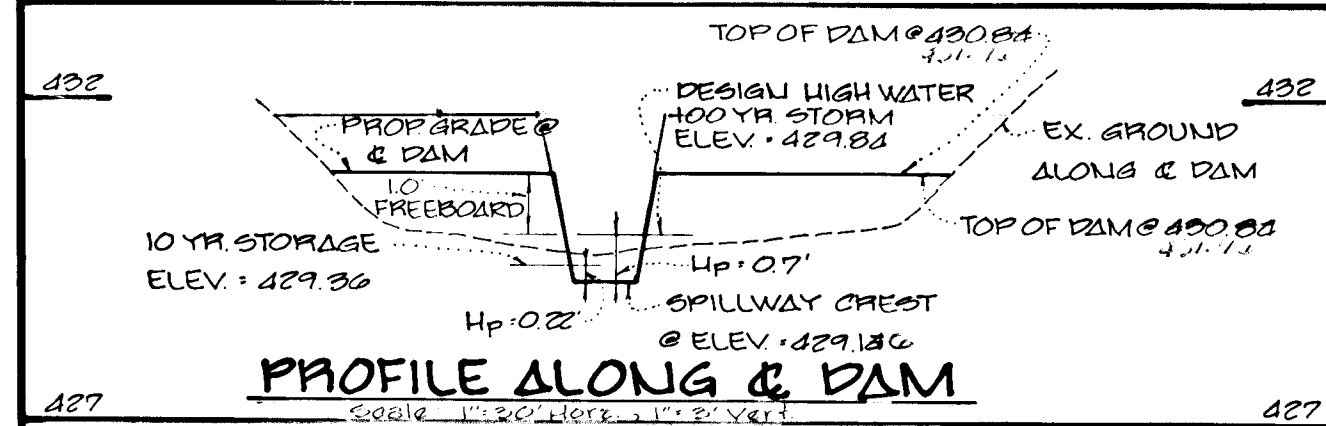
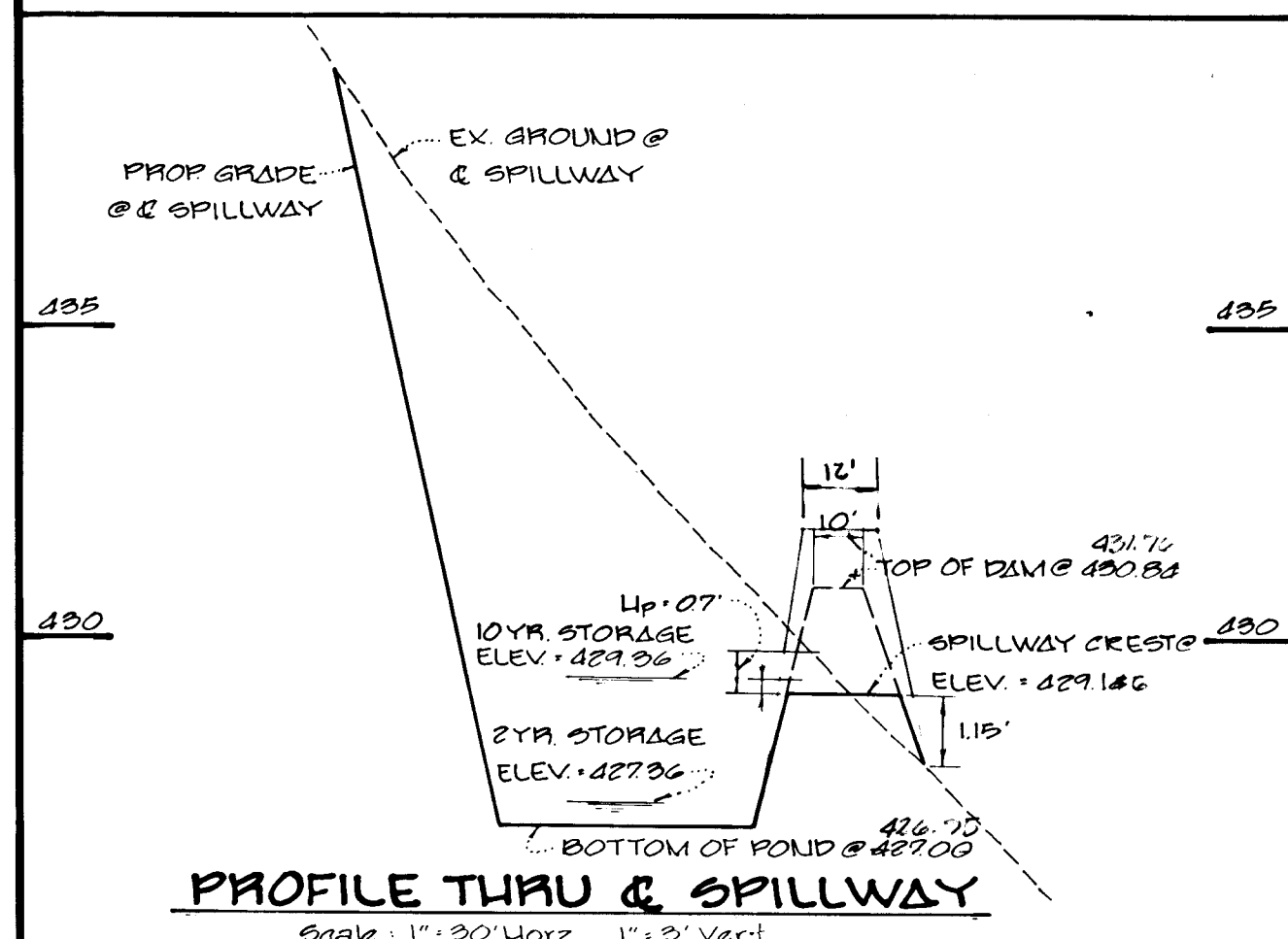


APPROVED DEPARTMENT OF PUBLIC WORKS  
*Donald H. Goslin* 9/27/88  
 CHIEF, LAND DEVELOPMENT DIVISION DATE

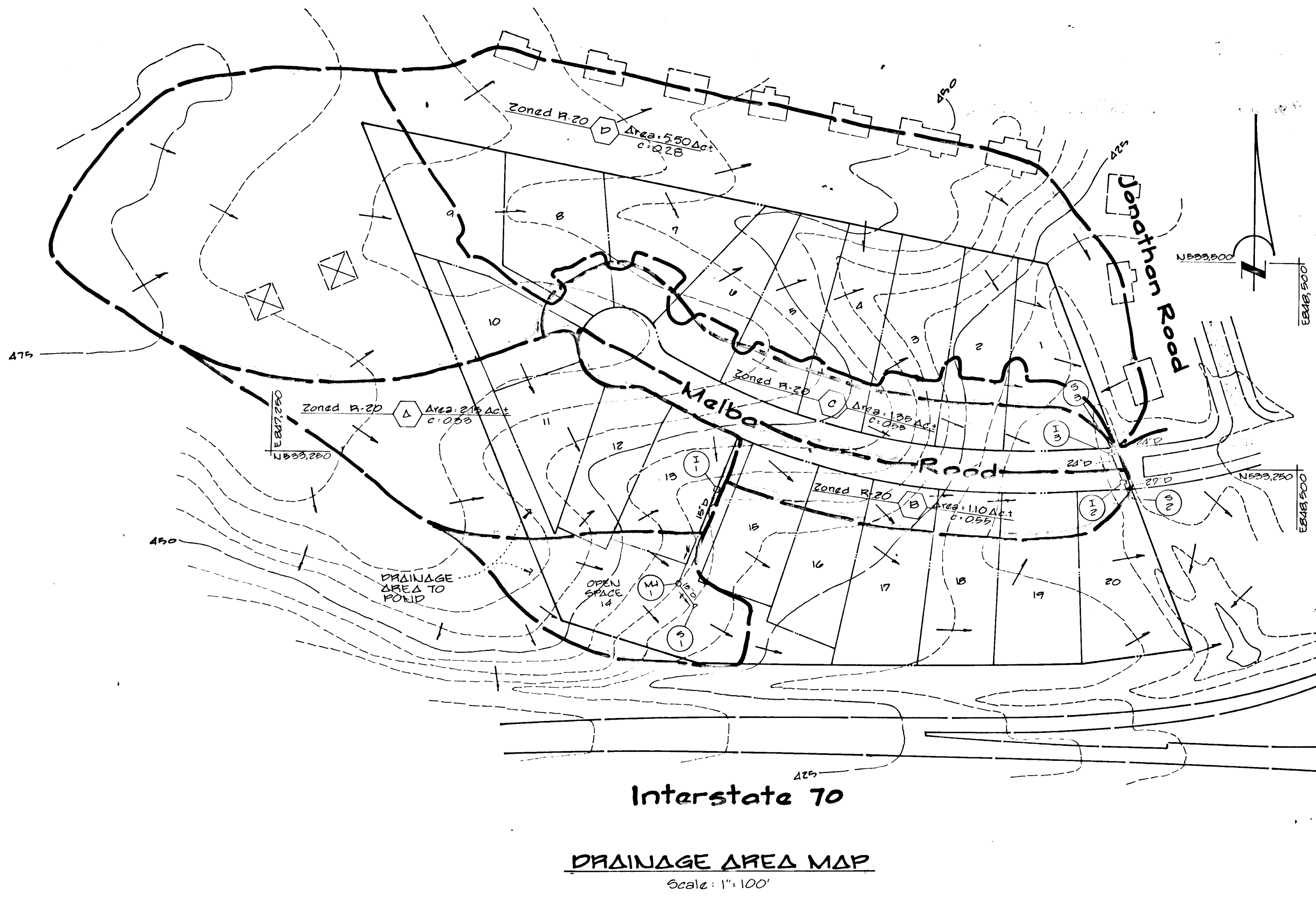
APPROVED DEPARTMENT OF PUBLIC WORKS  
 CHIEF, BUREAU OF HIGHWAYS DATE

APPROVED DEPARTMENT OF PUBLIC WORKS  
*William E. Ray* 10-4-88  
 CHIEF, BUREAU OF ENGINEERING DATE

APPROVED OFFICE OF PLANNING AND ZONING  
*Frank S. Jr. Layton* 10-6-88  
 CHIEF, DIVISION OF COMMUNITY PLANNING AND LAND DEVELOPMENT DATE



NOTE: FOR PLAN VIEW OF STORMWATER MANAGEMENT SEE SHEET D.



**Fisher Collins & Carter, Inc.**  
 Civil Engineers & Land Surveyors  
 8300 Court Avenue  
 Ellicott City, Maryland 21043  
 (301) 461-2855

Revised 10/27/89 by M.V. Change  
 Drainage Area "D" From Area 1.35 Ac.  
 to 0.35 to Area 5.50 Ac. & 0.28



Drainage Area Map Details  
**Orchard View**  
 Lots 1-20  
 2nd Election District Scale: As Shown  
 Howard County, Md. April 22, 1988  
 Sheet 3 OF 4

1385

