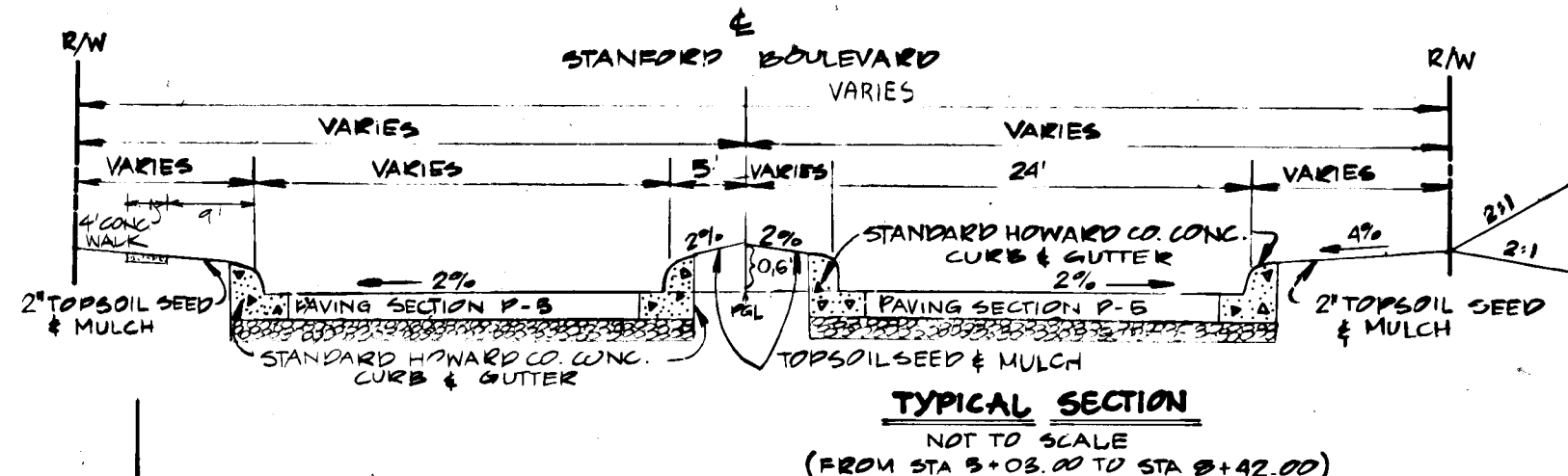
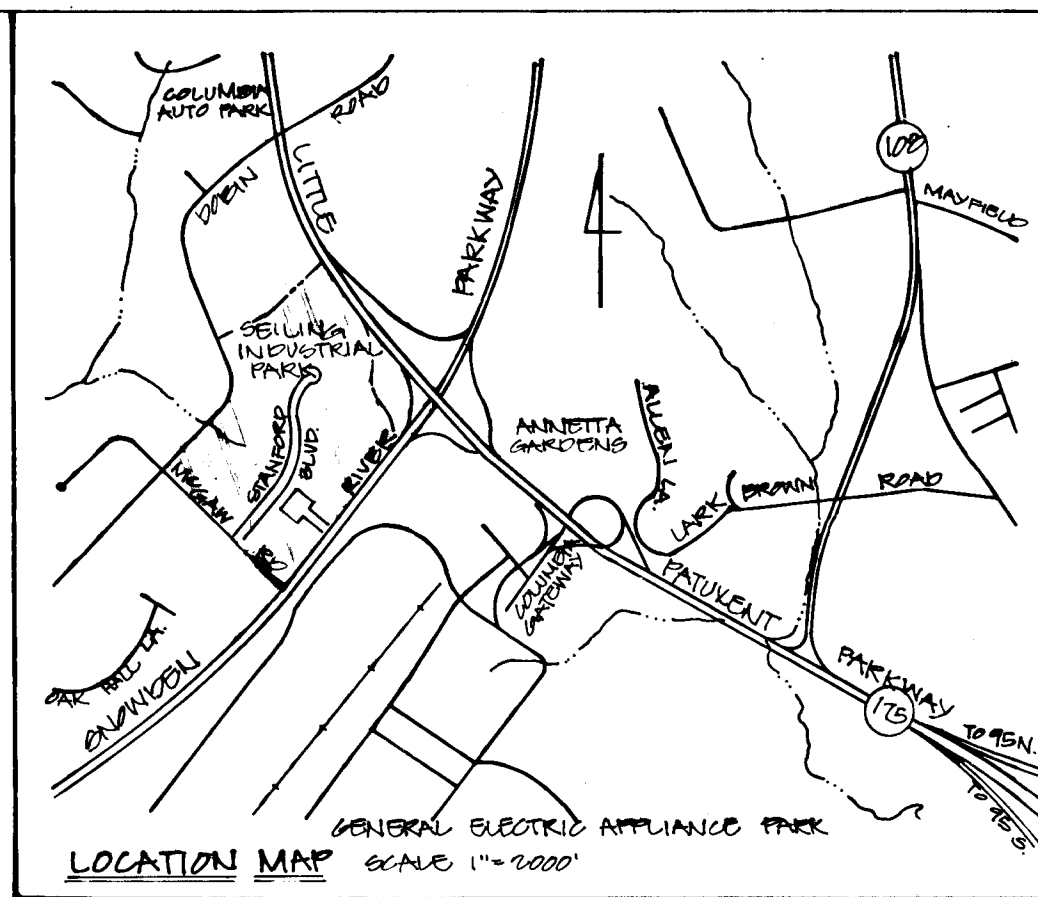
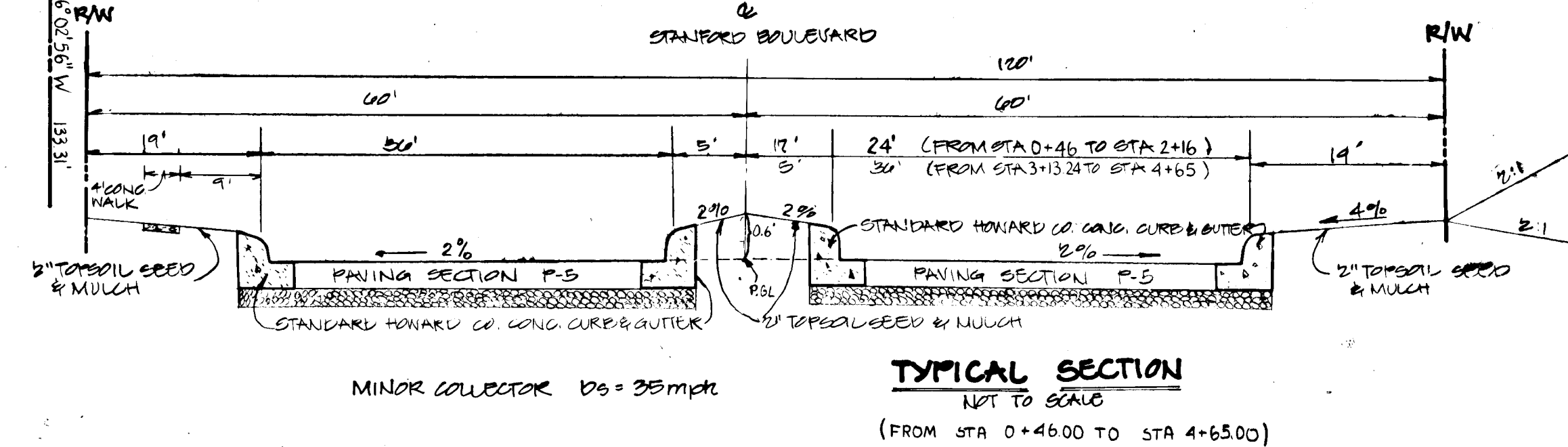
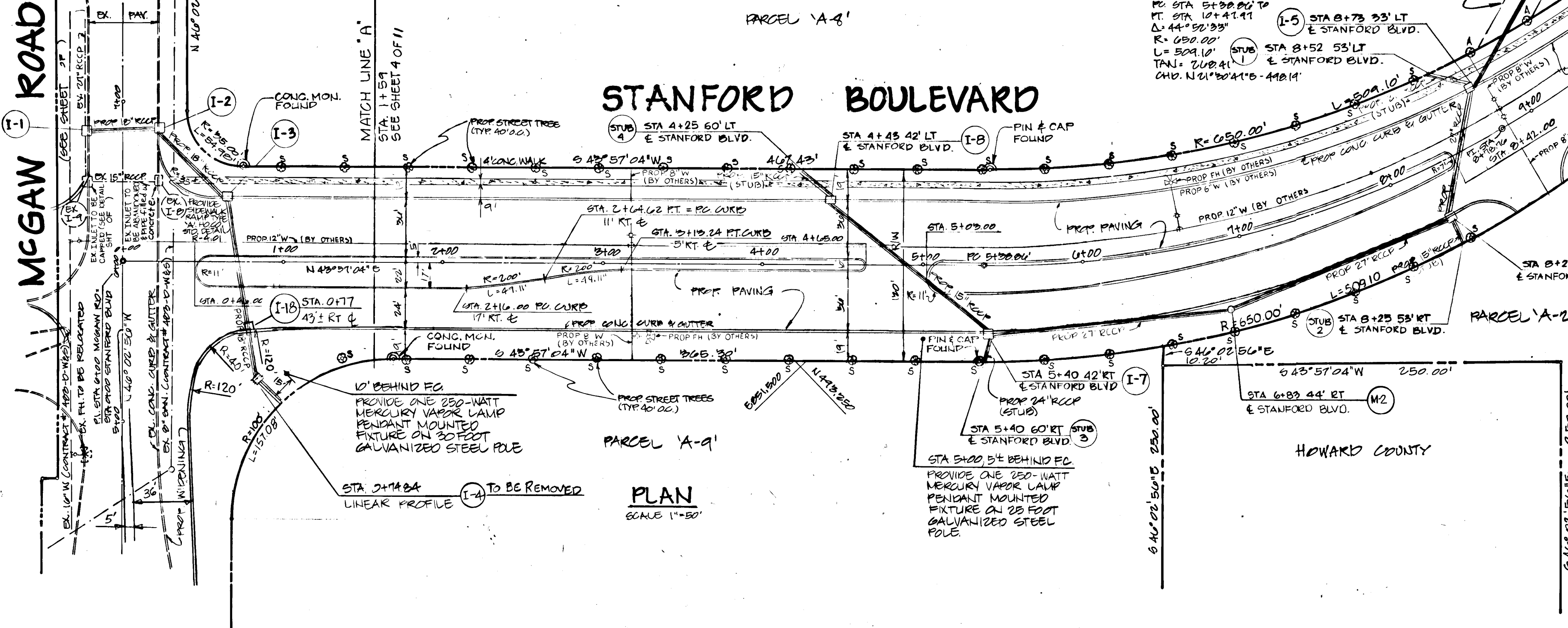


MCGAW ROAD



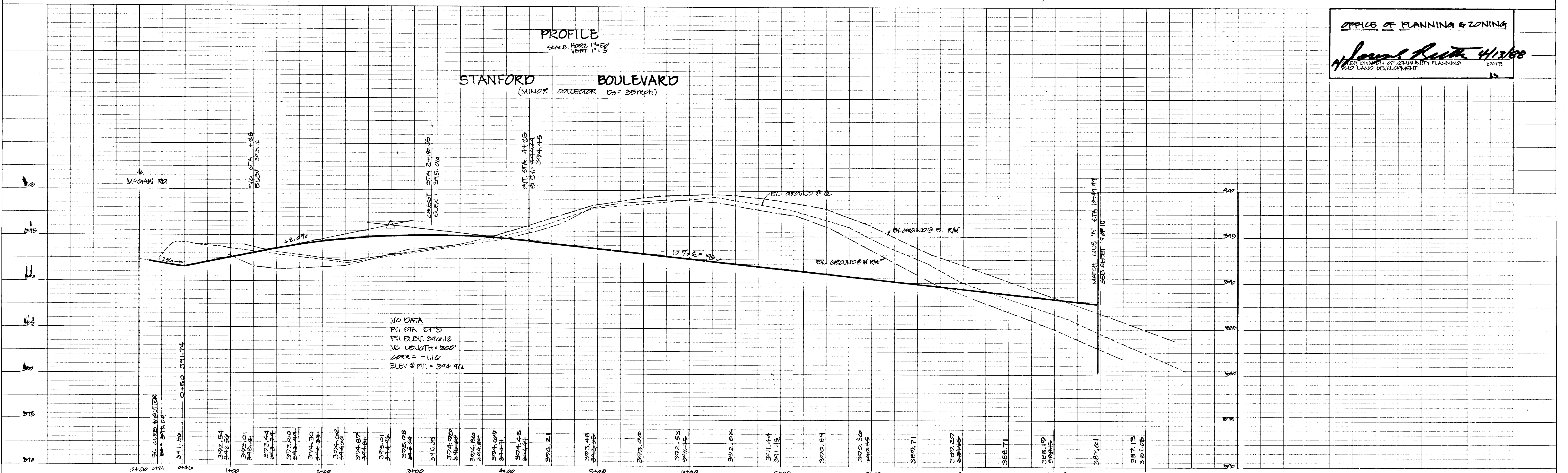
STANFORD BOULEVARD



LOCATION MAP SCALE 1"=1000'

PROFILE

STANFORD BOULEVARD (MINOR COLLECTOR, D_s = 25mph)



OFFICE OF PLANNING & ZONING
James R. ... 4/13/88
DATE 12

DEPARTMENT OF PUBLIC WORKS
HOWARD COUNTY, MARYLAND
CHIEF, LAND DEVELOPMENT DIVISION
DATE 4-8-88

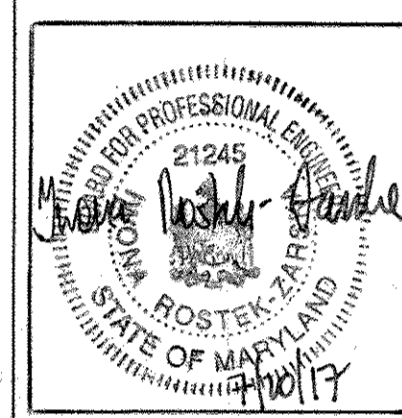
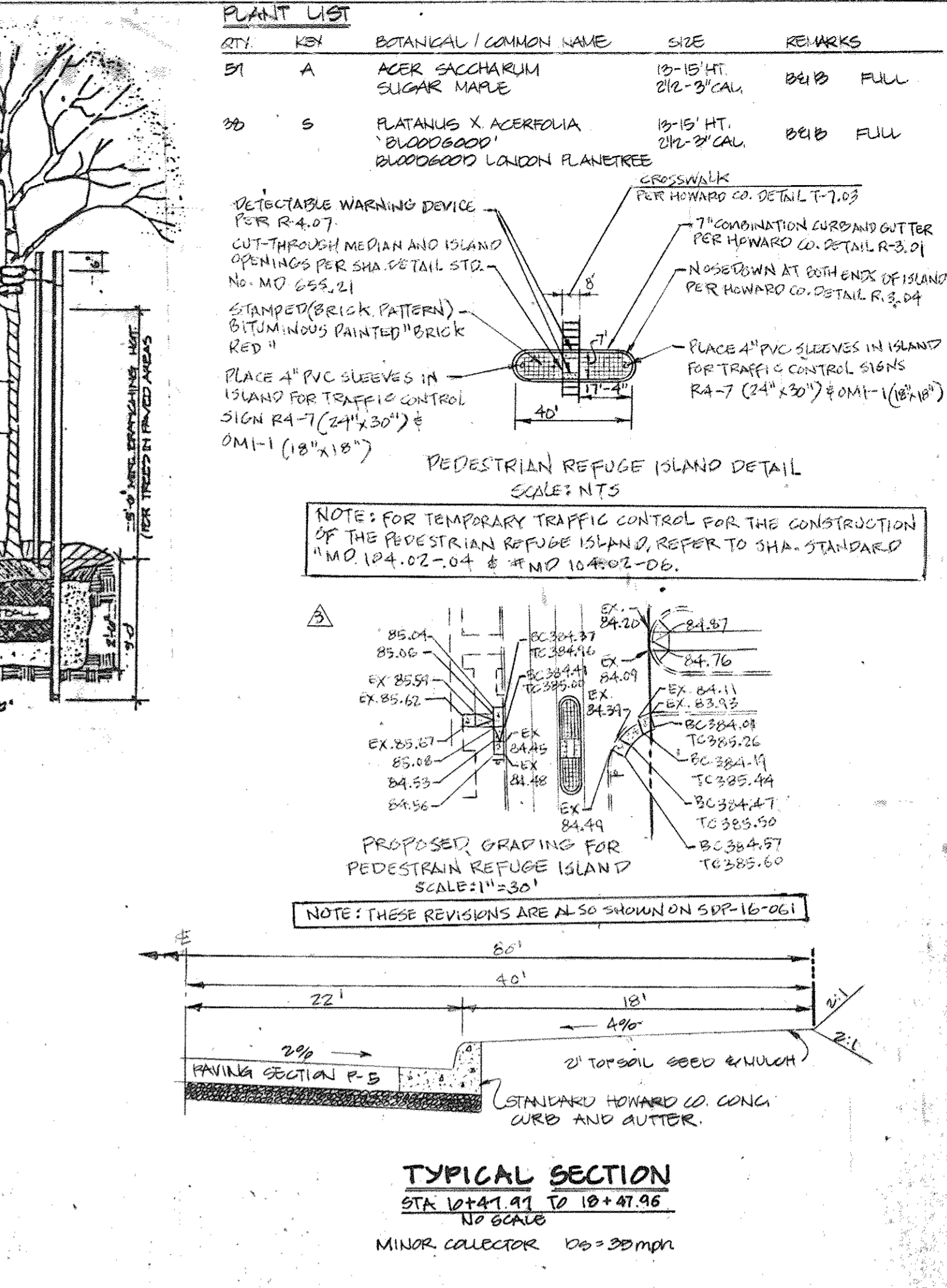
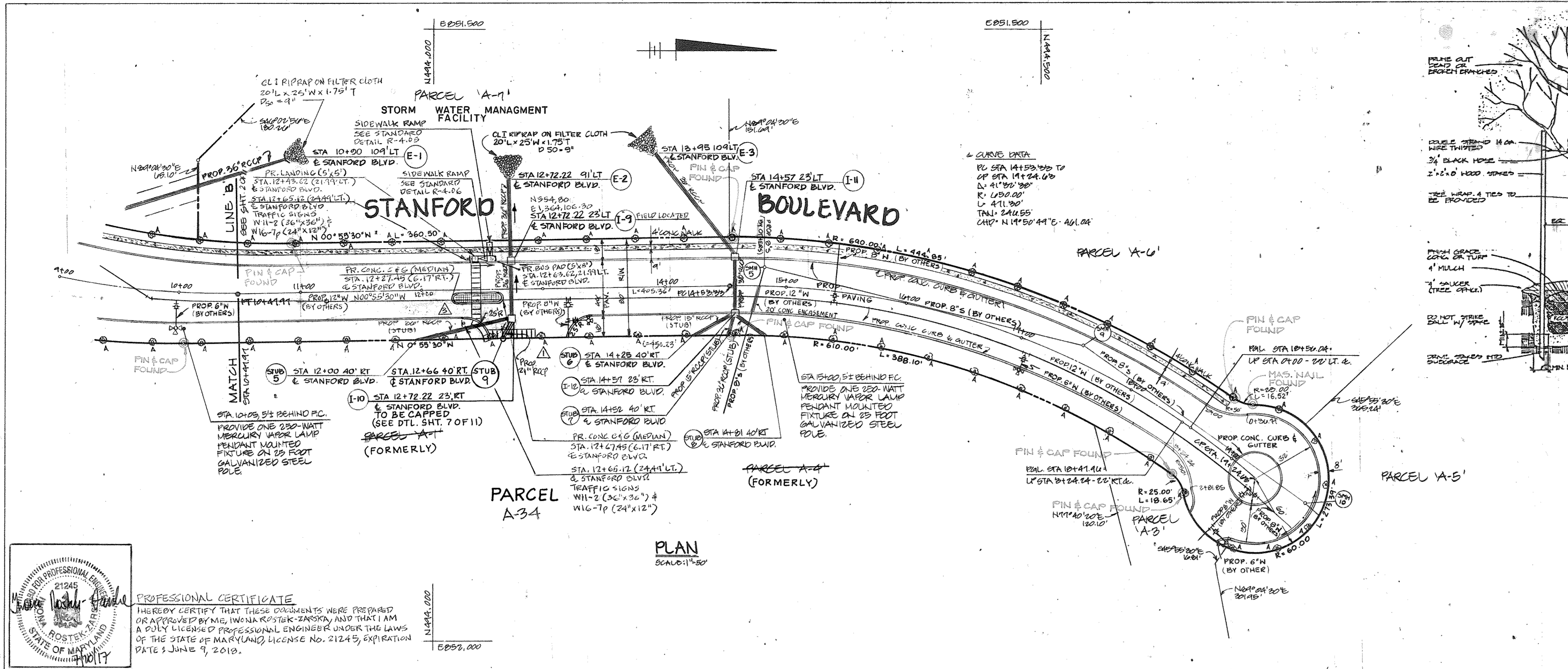
GEORGE W. STEPHENS JR. & ASSOCIATES INC.
303 ALLEGHENY AVENUE
TOWSON, MD 21284
301-225-2120

DES: MZ
DRN: DAL
CHK: PPS
DATE 08-25-81
GWS 1
REV. NE FILLET MCGAW RD. & STANFORD BLVD
ADDED I-18
1/8/91

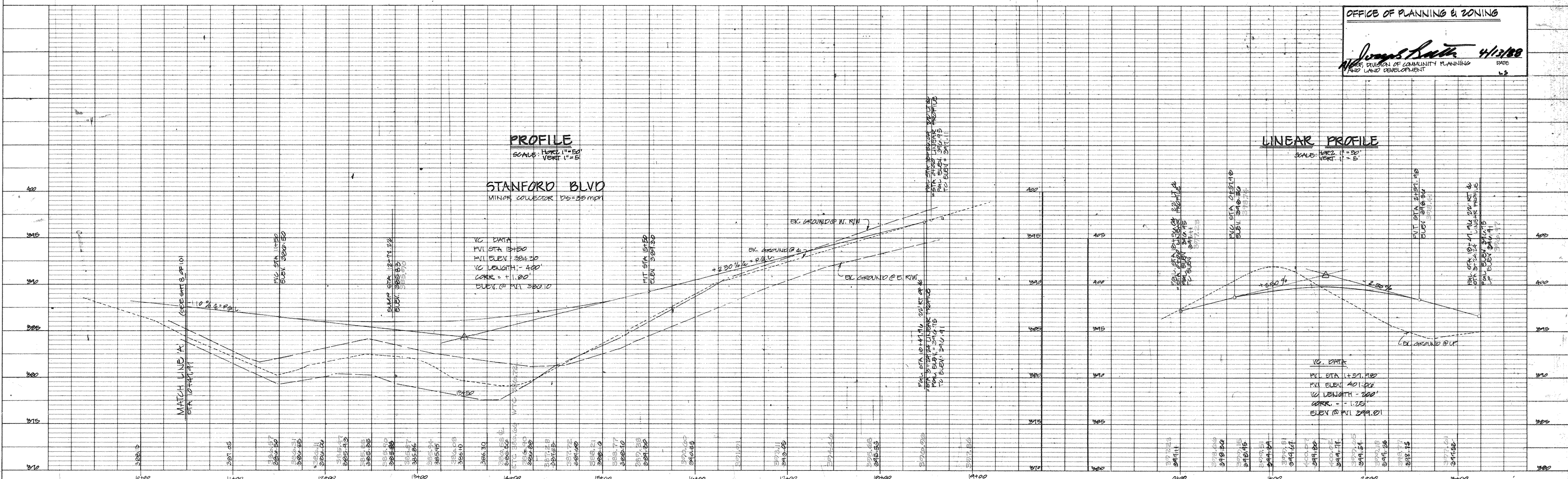
STANFORD BOULEVARD
PLAN & PROFILE
STA 0+00 TO STA 1+041.91

COLUMBIA CORPORATE PARK
BELLING INDUSTRIAL CENTER
SECTION 1 AREA 1 PARCELS A-1-A-9
HOWARD CO, MD
ELECT. DISTRICT 6
AUGUST 25, 1987

SCALE AS SHOWN
SHEET 2 OF 11

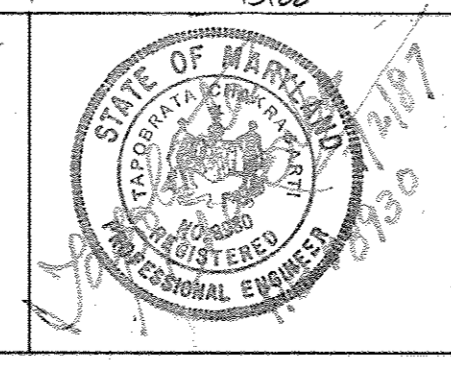


PROFESSIONAL CERTIFICATE
 I HEREBY CERTIFY THAT THESE DOCUMENTS WERE PREPARED OR APPROVED BY ME, JAMES W. STEPHENS, JR., AND THAT I AM A FULLY LICENSED PROFESSIONAL ENGINEER UNDER THE LAWS OF THE STATE OF MARYLAND, LICENSE NO. 21243, EXPIRATION DATE: JUNE 9, 2019.



DEPARTMENT OF PUBLIC WORKS
 HOWARD COUNTY, MARYLAND
 CHIEF, BUREAU OF HIGHWAYS

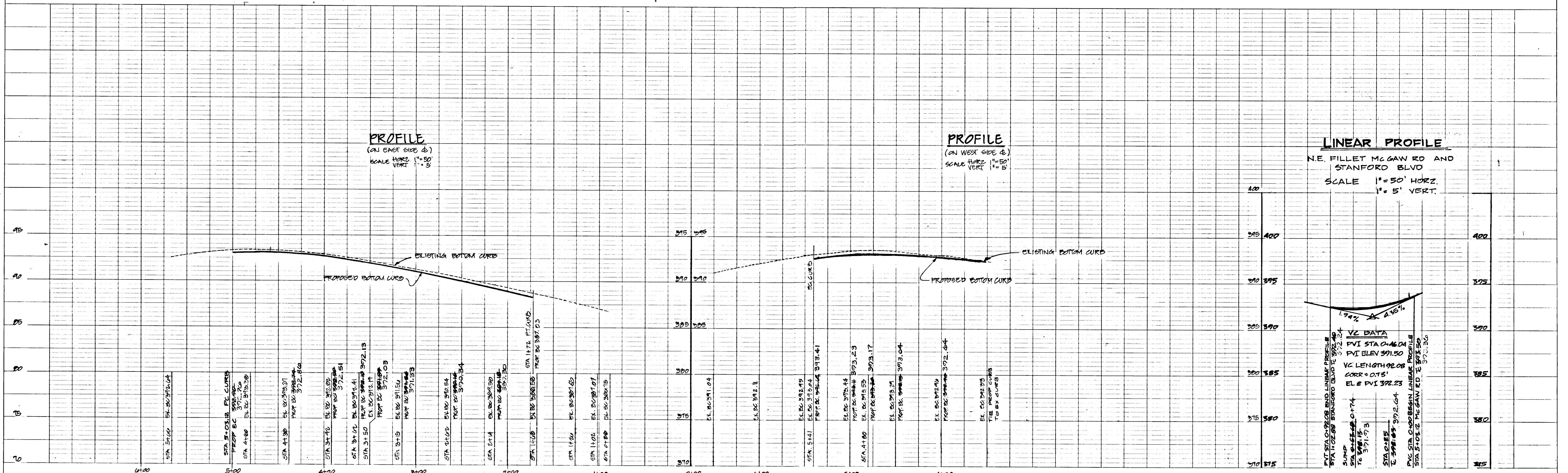
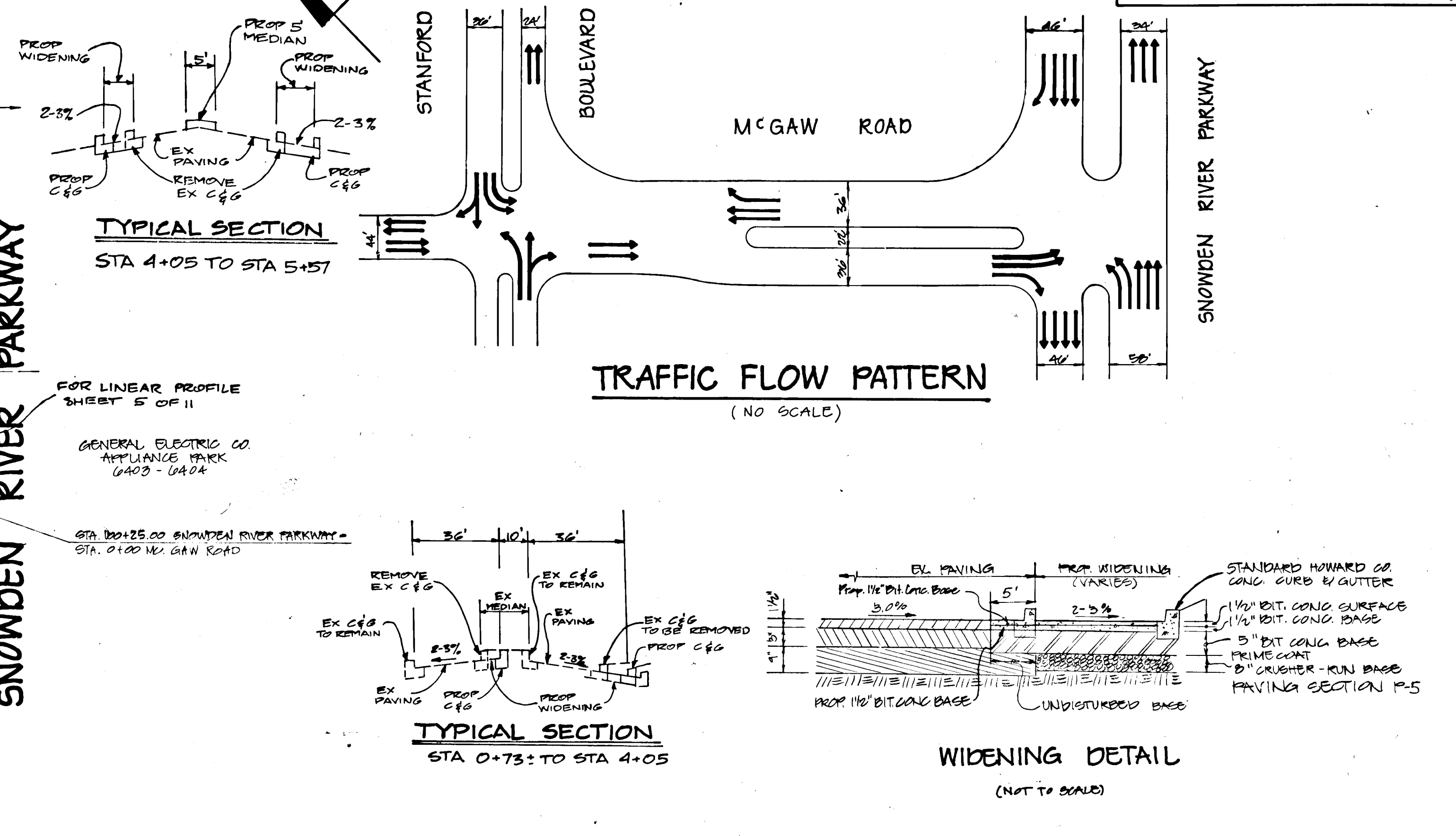
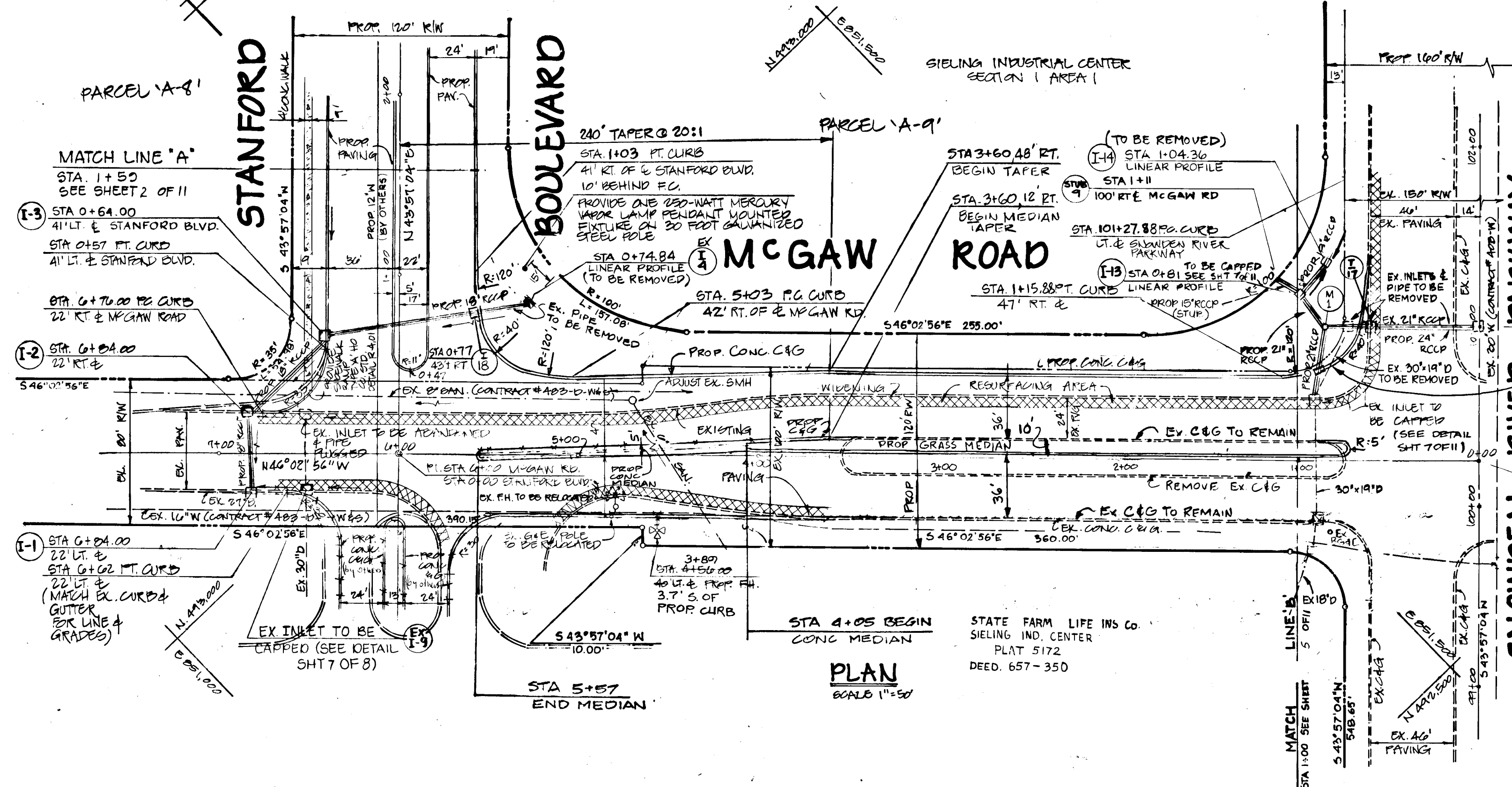
GEORGE W. STEPHENS, JR.
 ASSOCIATES, INC.
 203 ALLEGHENY AVENUE
 TOWSON, MARYLAND 21284
 201-225-2120



DES: WZ	G.W.S.	ADDED ENTRANCE TO A-34, MODIFIED I-10	3/5/17
DRN: DAL	DLDG	ADDED PEDESTRIAN REFUGE ISLAND AND BUS PAD	6/22/17
CHK: PKC			
DATE: 08-25-87	BY: NO	REVISION	DATE

STANFORD BOULEVARD
 PLAN & PROFILE
 STA 10+41.91 TO STA 19+24.03
 600' SCALE MAP NO. 36 BLOCK NO. 23 & 24

COLUMBIA CORPORATE PARK
 2610A INDUSTRIAL CENTER
 SECTION 1 AREA 1 PARCELS A-1-A-9
 HOWARD CO., MD. ELECT. DISTRICT 4
 AUGUST 25 1987
 AS-BUILT 6/27/04
 F-88-109



DEPARTMENT OF PUBLIC WORKS
 HOWARD COUNTY, MARYLAND
 Chief, Bureau of Highways
 Date: 4-8-88

GEORGE W. STEPHENS JR. & ASSOCIATES INC.
 303 ALLEGHENY AVENUE
 TOWSON, MD. 21284
 201-225-8120

DES: WZ
 DRN: DAL
 CHK: PRC
 DATE: 02/25/87
 REMOVED I-15
 REV. MEDIAN & REMOVED WIDENING SW. SIDE MCGAW
 R.U. CURVE NE SIDE MCGAW RD ADDED I-15
 DATE: 11/21/90

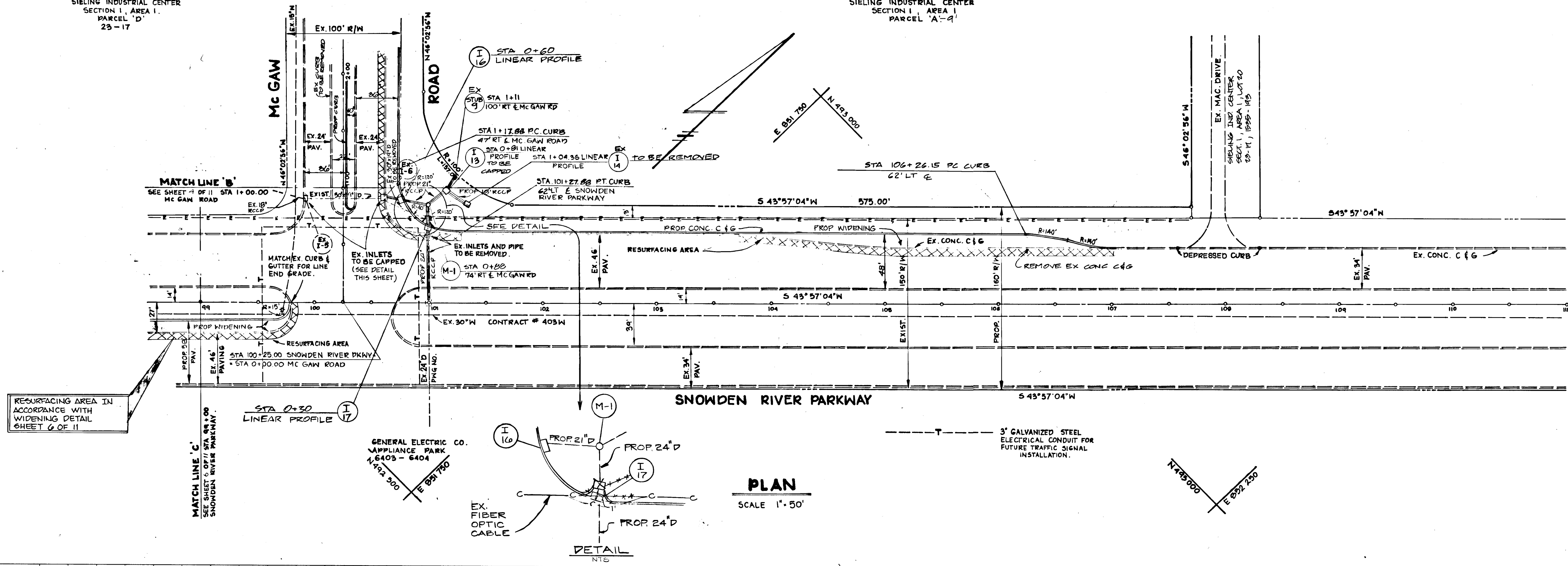
MCGAW ROAD
 PLAN & PROFILE
 STA 0+00 TO STA 7+00
 600' SCALE MAP NO. 36 BLOCK NO. 23 & 24

COLUMBIA CORPORATE PARK
 SEIUNA INDUSTRIAL CENTER
 SECTION I AREA I PARCELS 'A-1'-'A-9'
 HOWARD CO., MD. ELECT. DISTRICT 4
 AUGUST 25 1987

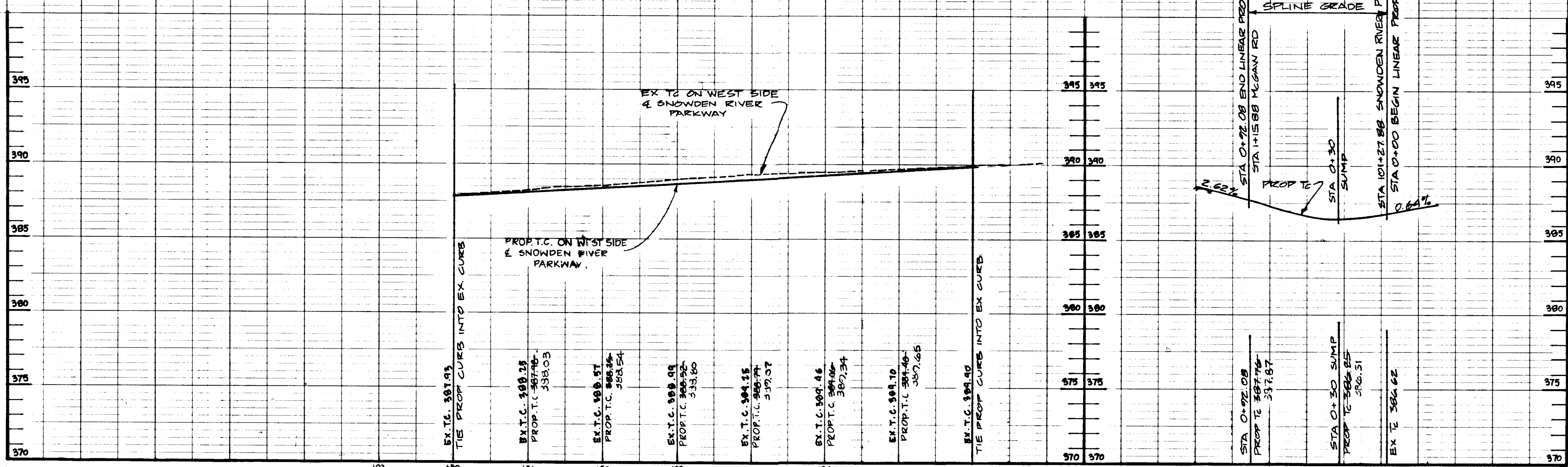
SCALE AS SHOWN
 SHEET 4 OF 11

SIELING INDUSTRIAL CENTER
SECTION I, AREA I,
PARCEL 'D'
23-17

SIELING INDUSTRIAL CENTER
SECTION I, AREA I,
PARCEL 'A-1'



OFFICE OF PLANNING & ZONING
James R. ... 4/13/88
DATE
16



DEPARTMENT OF PUBLIC WORKS
HOWARD COUNTY, MARYLAND
CHIEF, BUREAU OF ENGINEERING
DATE: 4/13/88

GEORGE W. STEPHENS JR. & ASSOCIATES INC.
303 ALLEGHENY AVENUE
TOWNSON, MD 21204
301-225-0120

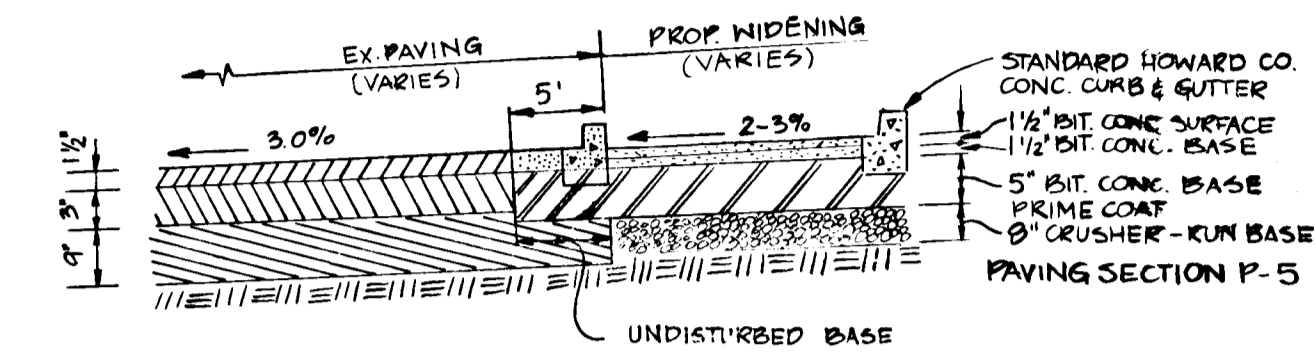
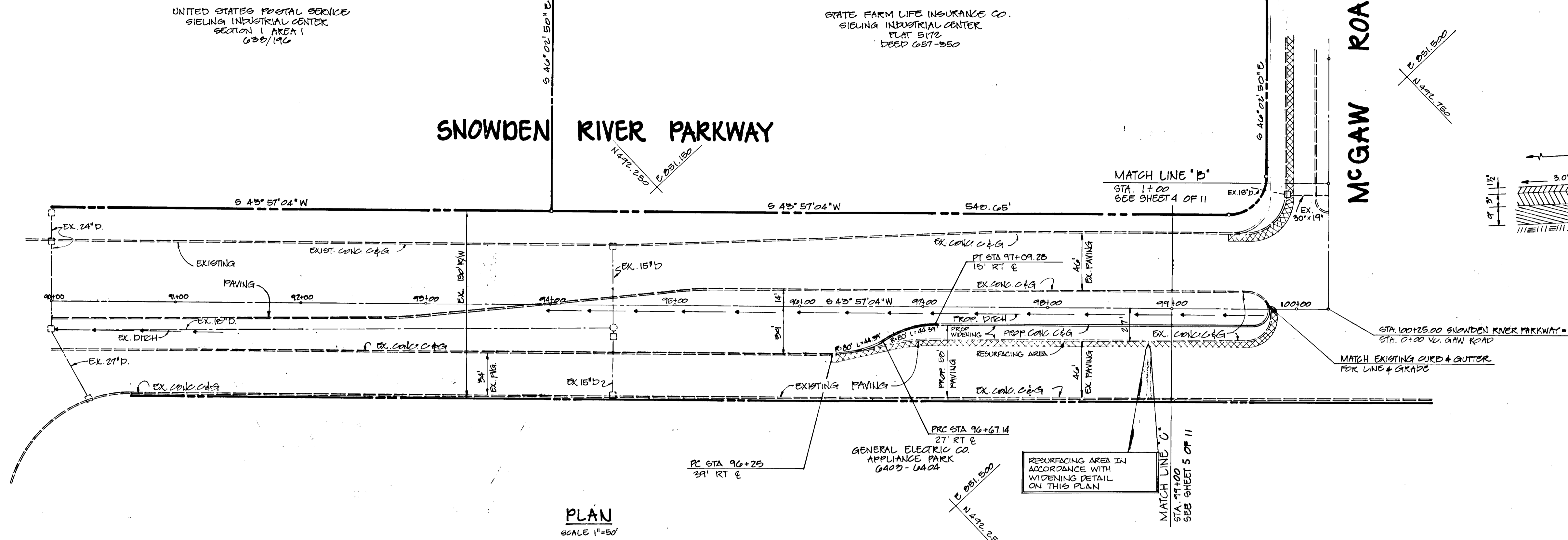


DES: W.Z.	GWS 1	ADDED I-16 & I-17 REMOVED I-15	11/9/80
DRN: J.W.		ADDED 3 CENTERED CURVE NORTH FILLET SNOWDEN RIVER PARKWAY & MCGAW ROAD	
CHK: P.R.C.	GWS 2	REVISED WIDENING SNOWDEN RIVER PKWY. PKWY ONTO MCGAW ROAD	6/10/83
DATE: 08-25-87		BY NO REVISION	DATE
	GWS 3	ADDED INLET DETAIL	6/20/84

SNOWDEN RIVER PARKWAY
PLAN & PROFILE
STA 99+00.00 TO STA 107+25.00
600' SCALE MAP NO. 36 BLOCK NO. 23 & 24

COLUMBIA CORPORATE PARK
SIELING INDUSTRIAL CENTER
SECTION I AREA I PARCELS 'A-1'-'A-8'
HOWARD CO., MD. ELECT. DISTRICT 6
AUGUST 25 1987

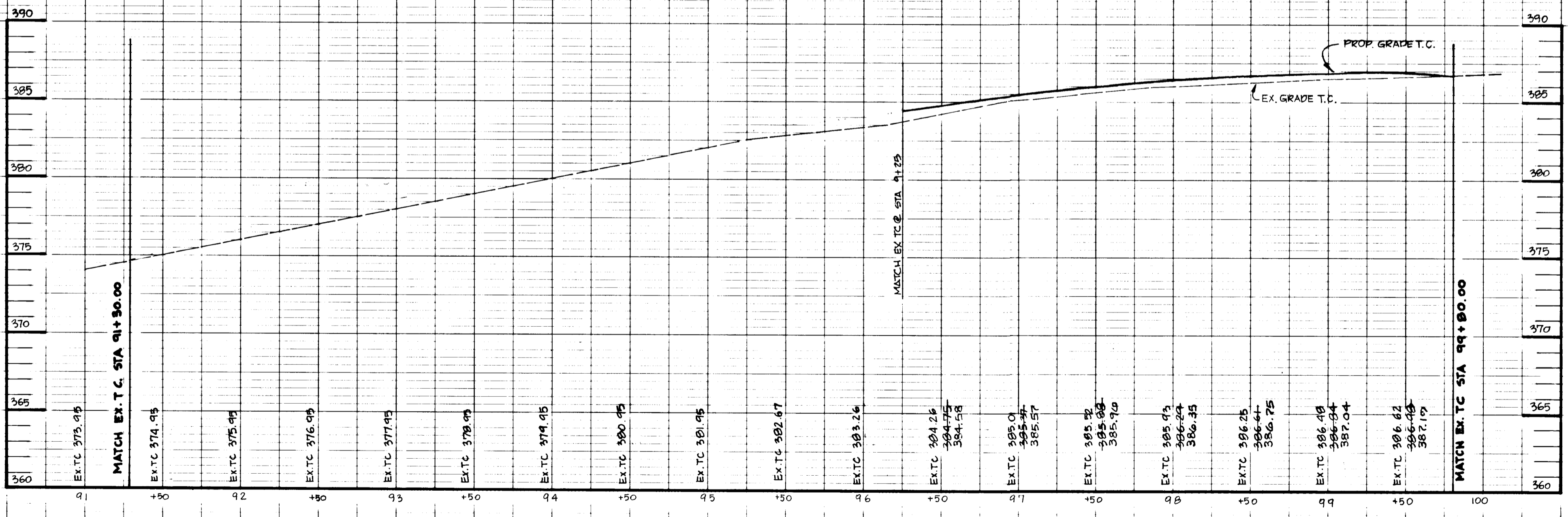
SCALE AS SHOWN
SHEET 5 OF 11



WIDENING DETAIL
NOT TO SCALE
SNOWDEN RIVER PARKWAY
STA 96+25 TO STA 99+80

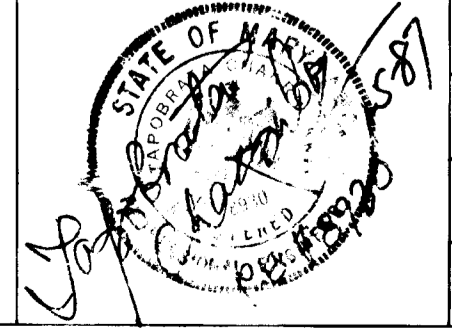
OFFICE OF PLANNING & ZONING
James Keith 4/18/88
CHIEF, DIVISION OF COMMUNITY PLANNING AND LAND DEVELOPMENT
DATE

WIDENING PROFILE
SNOWDEN RIVER PARKWAY
FROM STA 91+90.00 TO STA 99+80.00
SCALE: HORIZ: 1"=50'
VERT: 1"=5'



DEPARTMENT OF PUBLIC WORKS
HOWARD COUNTY, MARYLAND
Michael F. Kelly 4/18/88
CHIEF, LAND DEVELOPMENT DIVISION
James Keith 4/18/88
CHIEF, BUREAU OF HIGHWAYS

GEORGE W. STEPHENS JR. &
ASSOCIATES INC.
305 ALLEGHENY AVENUE
TOWSON, MD. 21284
301-825-0120



DES:	WZ.	GWS	1	SHORTENED DOUBLE LEFT TURN LANE ON NORTHBOUND	6/10/83
DRN:	VKL			SNOWDEN RIVER PKWY ONTO MCGAW RD	
CHK:	PRG				
DATE:	8-25-81	BY:	NO	REVISION	DATE

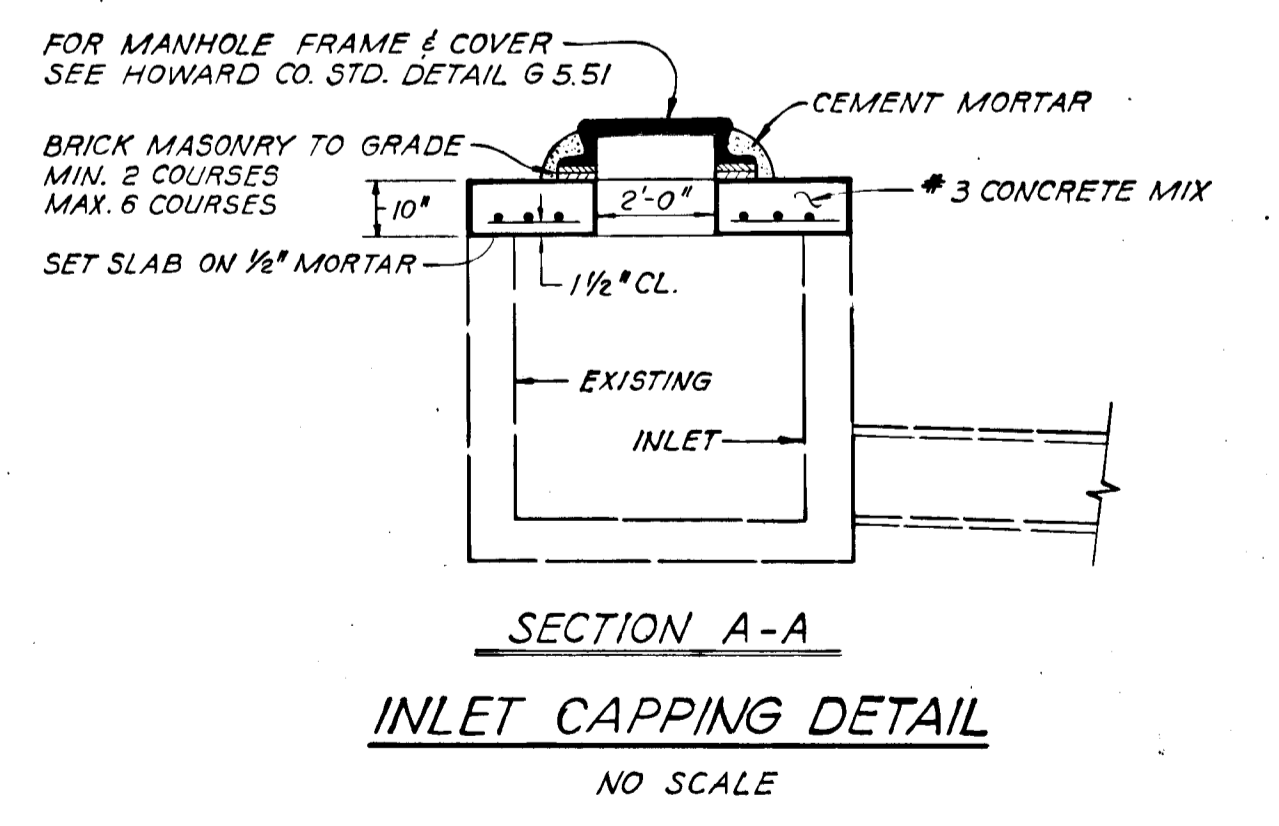
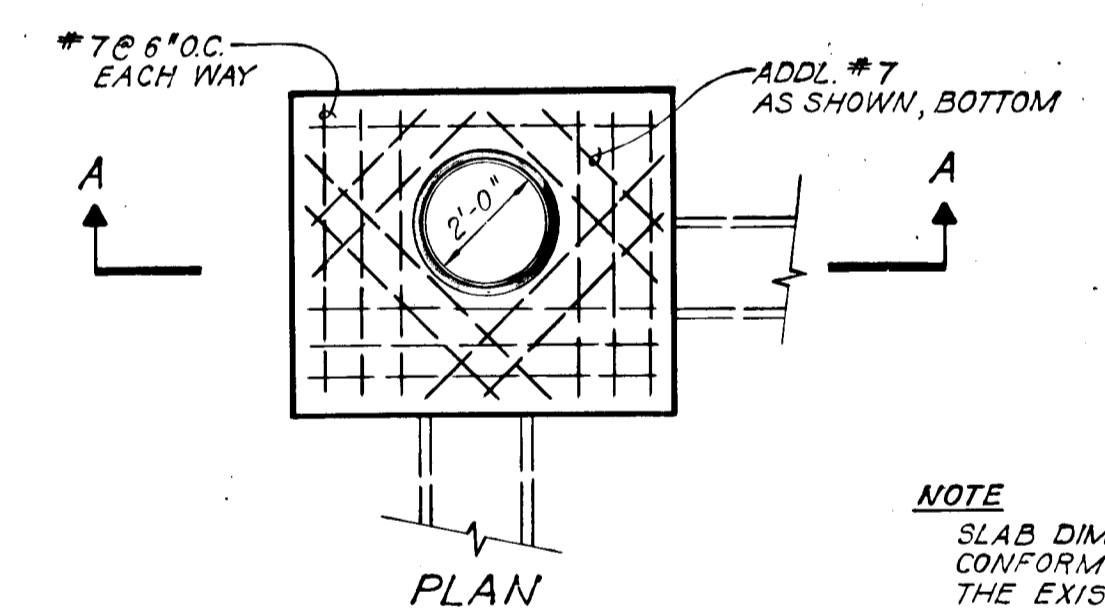
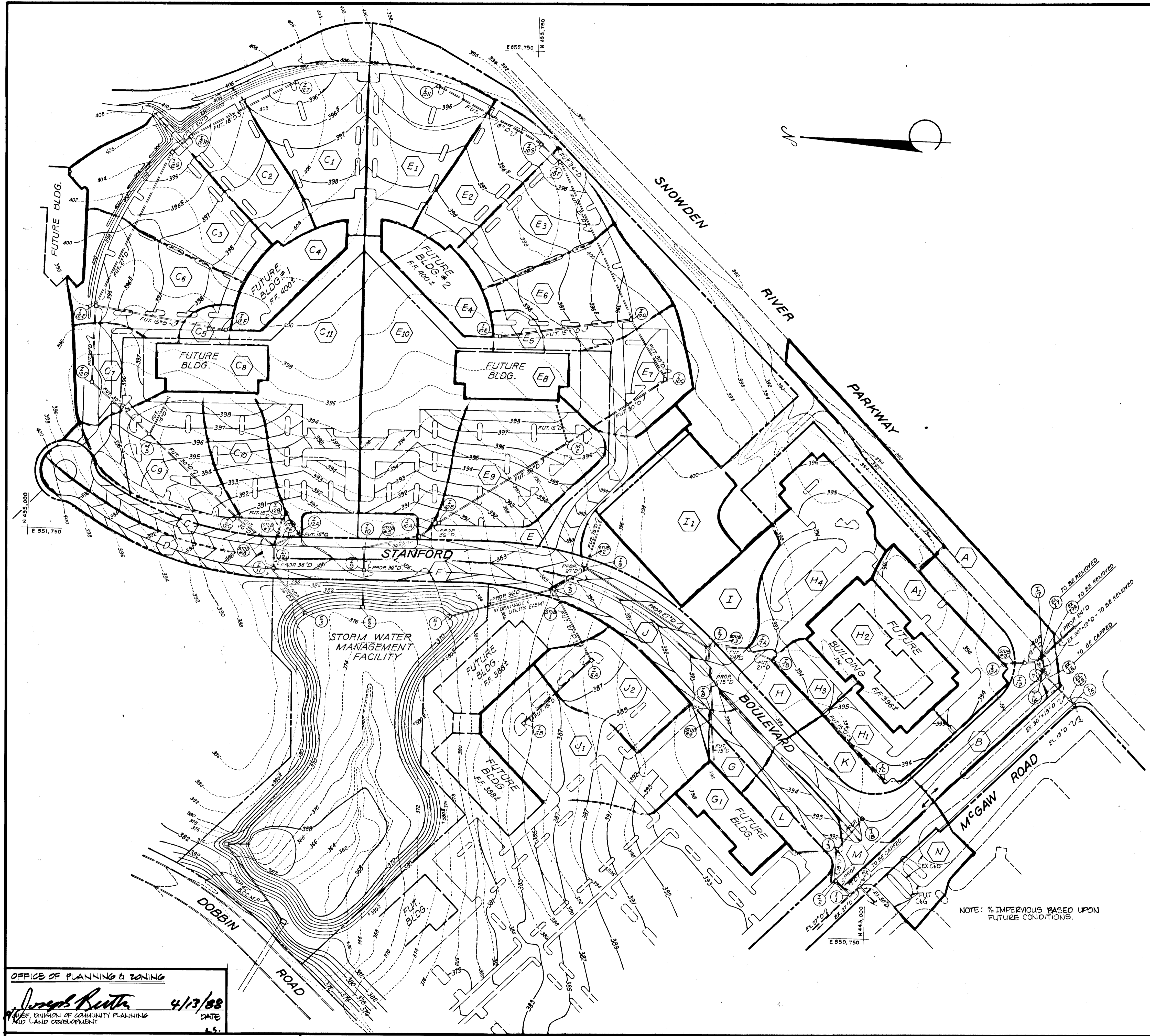
SNOWDEN RIVER PARKWAY
ROAD PLAN
STA 91+00 TO STA 99+00
600' SCALE MAP NO. 36 BLOCK NO. 23 & 24

COLUMBIA CORPORATE PARK
SIELING INDUSTRIAL CENTER
SECTION 1 AREA 1 PARCELS A-1-A-9
HOWARD CO., MD. ELECT. DISTRICT 6
AUGUST 25, 1981

SCALE AS SHOWN
SHEET 6 OF 11

STORM DRAIN DESIGN DATA

D.A.	AREA	"C"	IMPERVIOUS	GRASS	D.A.	AREA	"C"	IMPERVIOUS	GRASS
A	1.49 Ac±	0.66	55%	45%	E ₈	0.49 Ac±	0.95	100%	—
A ₁	0.80 Ac±	0.78	72%	28%	E ₉	1.60 Ac±	0.88	89%	11%
B	0.56 Ac±	0.71	64%	36%	E ₁₀	1.72 Ac±	0.69	57%	43%
C	0.76 Ac±	0.66	51%	49%	F	1.12 Ac±	0.78	72%	28%
C ₁	1.33 Ac±	0.81	77%	23%	G	0.34 Ac±	0.58	38%	42%
C ₂	0.97 Ac±	0.79	73%	27%	G ₁	0.48 Ac±	0.95	100%	—
C ₃	1.39 Ac±	0.68	55%	45%	H	0.56 Ac±	0.60	42%	58%
C ₄	0.58 Ac±	0.95	100%	—	H ₁	0.55 Ac±	0.79	73%	27%
C ₅	0.15 Ac±	0.79	73%	27%	H ₂	1.19 Ac±	0.95	100%	—
C ₆	1.37 Ac±	0.77	70%	30%	H ₃	0.29 Ac±	0.78	72%	28%
C ₇	0.77 Ac±	0.66	51%	49%	H ₄	1.38 Ac±	0.72	62%	38%
C ₈	0.49 Ac±	0.95	100%	—	I	1.10 Ac±	0.52	28%	72%
C ₉	1.13 Ac±	0.87	87%	13%	I ₁	1.27 Ac±	0.45	17%	83%
C ₁₀	0.81 Ac±	0.90	92%	8%	J	0.60 Ac±	0.72	62%	38%
C ₁₁	1.72 Ac±	0.69	57%	23%	J ₁	1.64 Ac±	0.72	62%	38%
D	0.50 Ac±	0.78	72%	28%	J ₂	1.00 Ac±	0.73	63%	37%
E	1.79 Ac±	0.61	43%	57%	K	0.83 Ac±	0.56	40%	60%
E ₁	1.25 Ac±	0.87	87%	13%	L	0.49 Ac±	0.55	33%	57%
E ₂	0.93 Ac±	0.85	84%	16%	M	0.12 Ac±	0.90	92%	8%
E ₃	1.07 Ac±	0.81	77%	23%	N	0.66 Ac±	0.79	73%	27%
E ₄	0.58 Ac±	0.95	100%	—					
E ₅	0.15 Ac±	0.79	73%	27%					
E ₆	0.99 Ac±	0.75	67%	33%					
E ₇	1.14 Ac±	0.72	62%	38%					



NOTE: % IMPERVIOUS BASED UPON FUTURE CONDITIONS.

OFFICE OF PLANNING & ZONING
James R. Banta 4/13/88
 CHIEF, DIVISION OF COMMUNITY PLANNING AND LAND DEVELOPMENT

DEPARTMENT OF PUBLIC WORKS
William H. ...
 CHIEF, BUREAU OF ENGINEERING
Granville W. ... 4/17/88
 CHIEF, BUREAU OF HIGHWAYS

GEORGE WILLIAM STEPHENS, JR. AND ASSOCIATES, INC.
 CIVIL ENGINEERS & LAND SURVEYORS
 303 ALLEGHENY AVENUE
 TOWSON, MARYLAND 21204
 (301) 825-8120

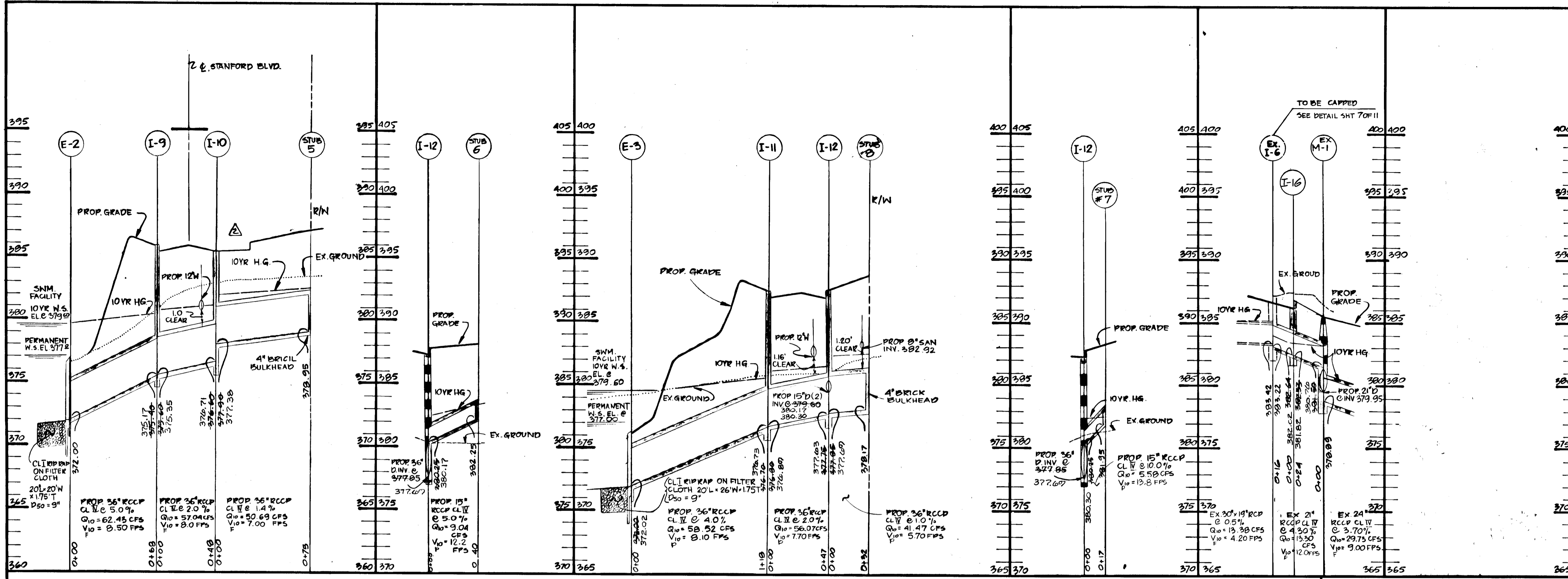
James R. Banta
 4/13/88
 CHIEF, DIVISION OF COMMUNITY PLANNING AND LAND DEVELOPMENT

DESIGNED BY:	BY:	NO.	REVISION	DATE
N.J.B.	GWS	1	ADD'D I-14 & I-17 & I-18	11/21/80
V.K.L.				
N.J.B.				

DRAINAGE AREA MAP
 600' SCALE MAP NO. 36
 BLOCK NO. 23, 24

PROPOSED OFFICE
COLUMBIA CORPORATE PARK
 SIELING INDUSTRIAL PARK
 SECTION 1, AREA 1, PARCELS A-1'-A-9'
 HOWARD COUNTY, MARYLAND ELECTION DISTRICT 6
 AUGUST 25, 1987

SCALE: 1"=100'
 SHEET NO. 7 OF 11



INLET SCHEDULE				
NO	TYPE	ELEVATION		REMARKS
		TOP	INV. IN	
I 1	DBL 5' COMB	390.75	385.75	HO. CO. STD. DET. 4.34
I 2	TYPE A 5 INLET	391.20	386.22	HO. CO. STD. DET. 4.01 & 4.03
I 3	TYPE A 5 INLET	391.74	386.80	HO. CO. STD. DET. 4.01
I 5	TYPE A 5 INLET	389.50	378.70	HO. CO. STD. DET. 4.01
I 6	TYPE A 5 INLET	390.00	382.00	HO. CO. STD. DET. 4.01
I 7	TYPE A 5 INLET	393.00	387.70	HO. CO. STD. DET. 4.01
I 8	TYPE A 5 INLET	394.10	390.15	HO. CO. STD. DET. 4.01
I 9	TYPE A 10 INLET	385.30	375.40	HO. CO. STD. DET. 4.02
I 10	TYPE A 10 INLET	385.30	377.30	HO. CO. STD. DET. 4.02
I 11	TYPE A 5 INLET	387.90	376.80	HO. CO. STD. DET. 4.01
I 12	TYPE A 5 INLET	387.90	377.85	HO. CO. STD. DET. 4.01
I 13	TYPE A 5 INLET	386.10	380.17	HO. CO. STD. DET. 4.01
I 16	TYPE A 5 INLET	386.70	382.64	HO. CO. STD. DET. 4.01
I 17	TYPE A 10 INLET	386.25	378.15	HO. CO. STD. DET. 4.02
I 18	TYPE A 5 INLET	382.15	387.30	HO. CO. STD. DET. 4.01

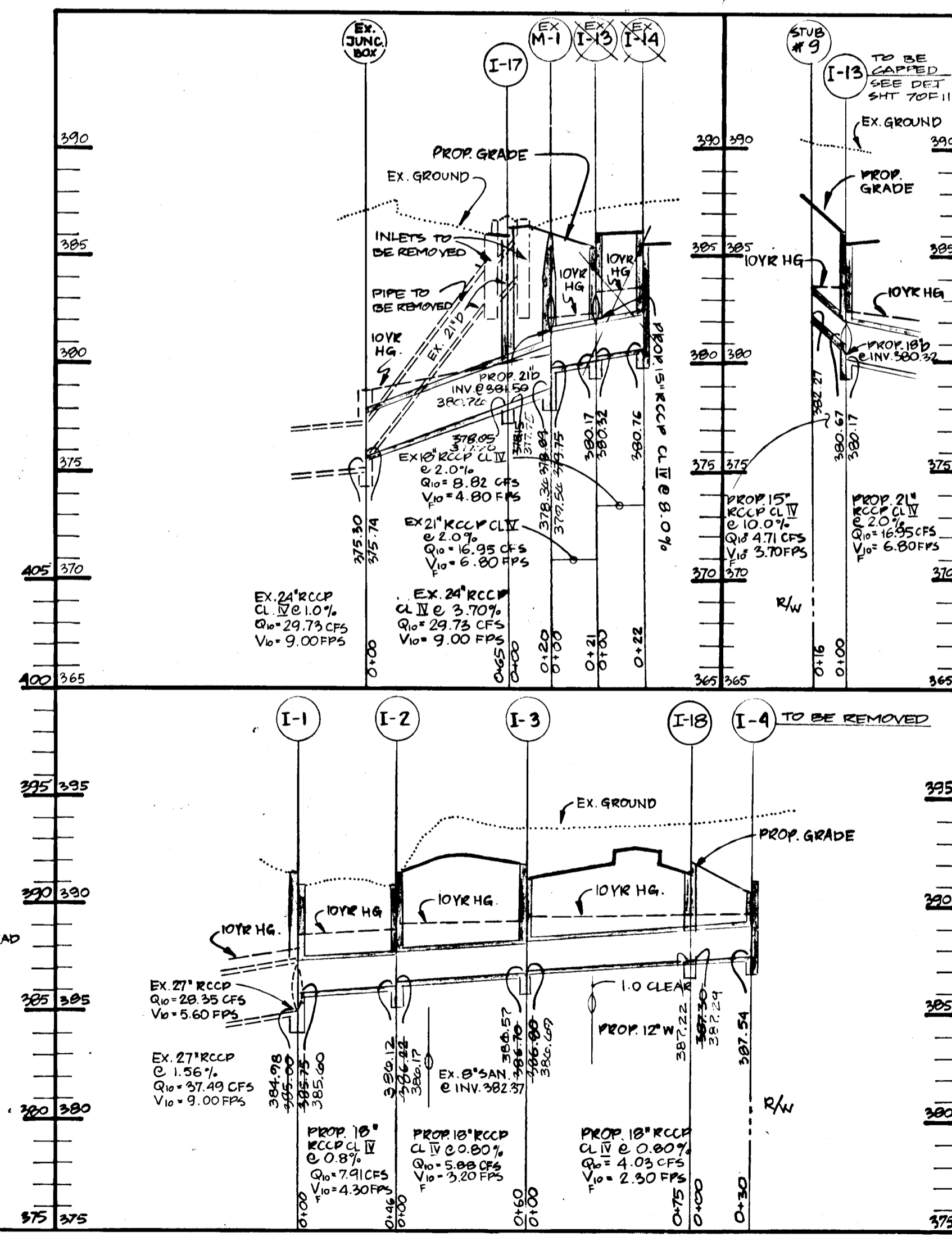
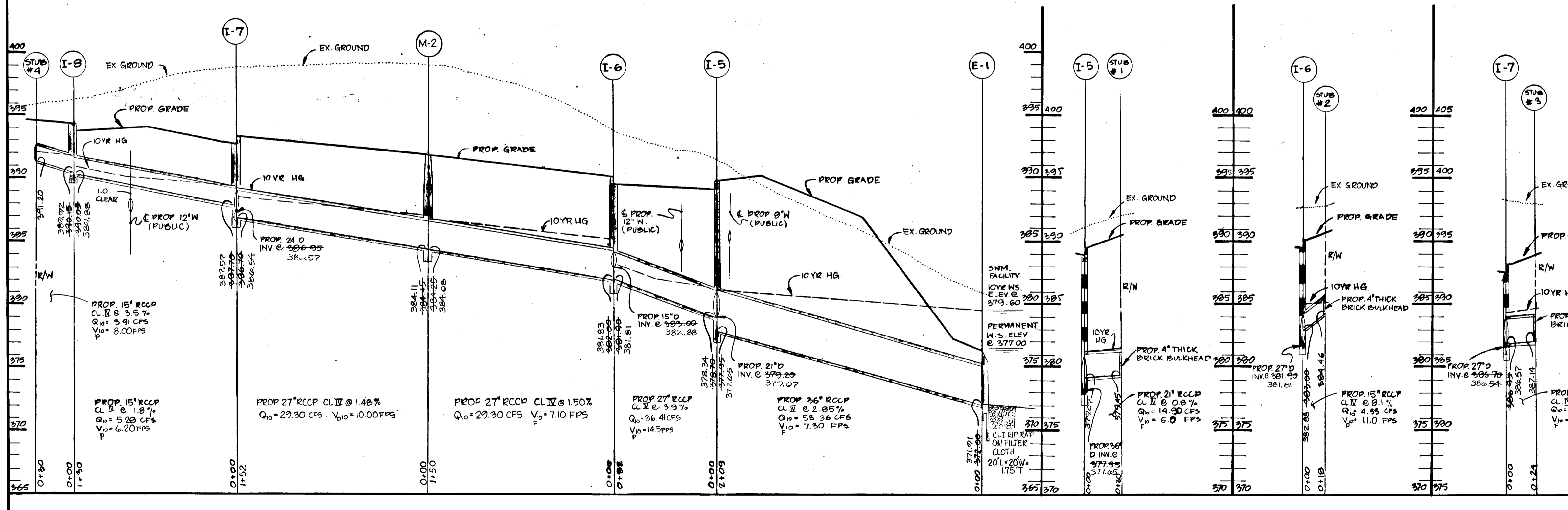
STRUCTURE SCHEDULE				
NO	TYPE	ELEVATION		REMARKS
		TOP	INV. IN	
M 1	5'-0\"/>			

STORM DRAIN PROFILES

NOTE: ALL STORM DRAINS TO BE CLASS II MINIMUM.
ALL VELOCITIES ARE BASED ON INVERT OF PIPE.
(V_F = FULL FLOW VELOCITY, V_P = PARTIAL FLOW VELOCITY)

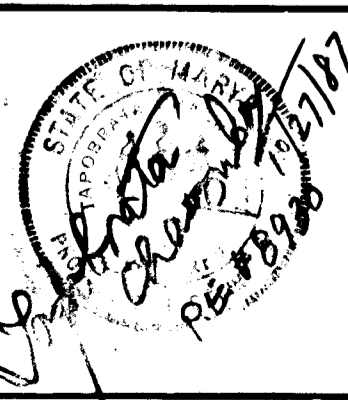
Scale: 1" = 50' HORIZ
1" = 5' VERT

OFFICE OF PLANNING & ZONING
Frank Lantz 4/13/88
PLANNING & ZONING DIVISION OF COMMUNITY PLANNING
DATE L.S.



DEPARTMENT OF PUBLIC WORKS
Chief, Bureau of Engineering DATE
Chief, Bureau of Highways DATE

GEORGE WILLIAM STEPHENS, JR.
AND ASSOCIATES, INC.
CIVIL ENGINEERS & LAND SURVEYORS
303 ALLEGHENY AVENUE
TOWSON, MARYLAND 21284
(301) 825-8120



DESIGNED BY: N.J.B.
DRAWN BY: J.J.W.
CHECKED BY: N.J.B.

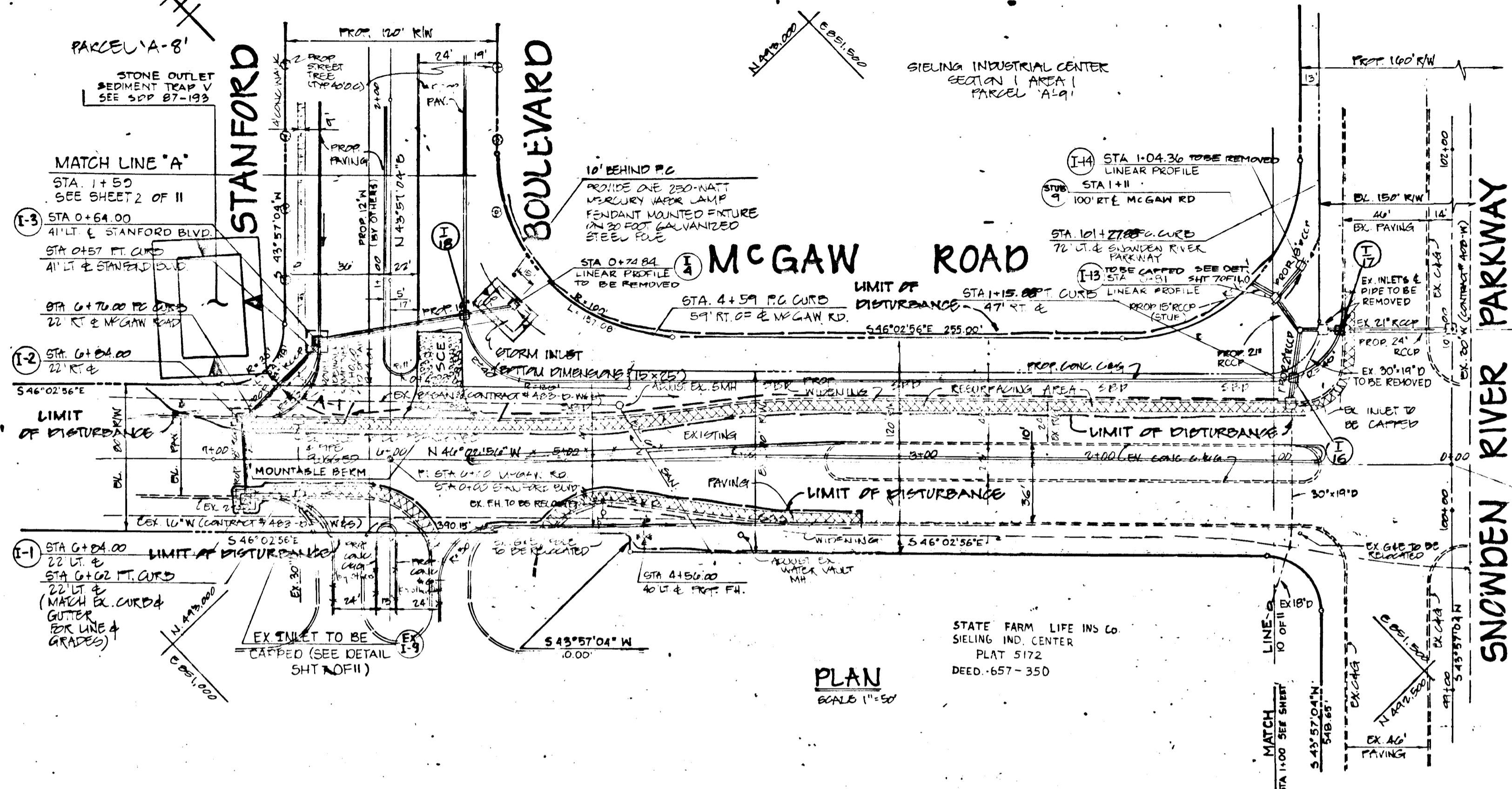
BY:	NO.	REVISION	DATE
G.W.S.	1	ADDED I-16 & I-17 & I-18 ELIMINATED I-15	11/21/83
G.W.S.	2	REVISED I-10 TOP ELEV. & INLET SCHEDULE	3/5/87

STORM DRAIN PROFILES
CONTRACT NO.
600' SCALE MAP NO. BLOCK NO.

COLUMBIA CORPORATE PARK
SIELING INDUSTRIAL CENTER
SECTION 1, AREA 1, PARCELS 'A' 1 - 'A' 11
HOWARD COUNTY, MARYLAND ELECTION DISTRICT 6

SCALE:
HORIZ 1" = 50'
VERT 1" = 5'
SHEET NO.
8 OF 11

Approved 4/13/88
COLUMBIA CORPORATE PARK
SECTION I AREA I PARCELS A-1-A-9



ENGINEER'S CERTIFICATE

I CERTIFY THAT THIS PLAN FOR CONSTRUCTION, EROSION AND SEDIMENT CONTROL REPRESENTS A PRACTICAL AND FEASIBLE PLAN BASED ON MY PERSONAL KNOWLEDGE OF THE SITE CONDITIONS. THIS PLAN WAS PREPARED IN ACCORDANCE WITH THE REQUIREMENTS OF THE SITE CONDITIONS. THIS PLAN WAS PREPARED IN ACCORDANCE WITH THE REQUIREMENTS OF THE HOWARD SOIL CONSERVATION DISTRICT.

Robert W. Zehm 8930 10/27/87
REGISTERED PROFESSIONAL ENGINEER, LICENSE NO. 11780

Reviewed for Howard Soil Conservation District and meets technical requirements.

James M. Helm 4-5-88
The In-Res Soils Conservation Services
Howard County Soil Conservation District
Date

SEDIMENT CONTROL MEASURES FOR THIS CONTRACT WILL BE IMPLEMENTED IN ACCORDANCE WITH THE STANDARD SPECIFICATIONS AND SDP-87-193.

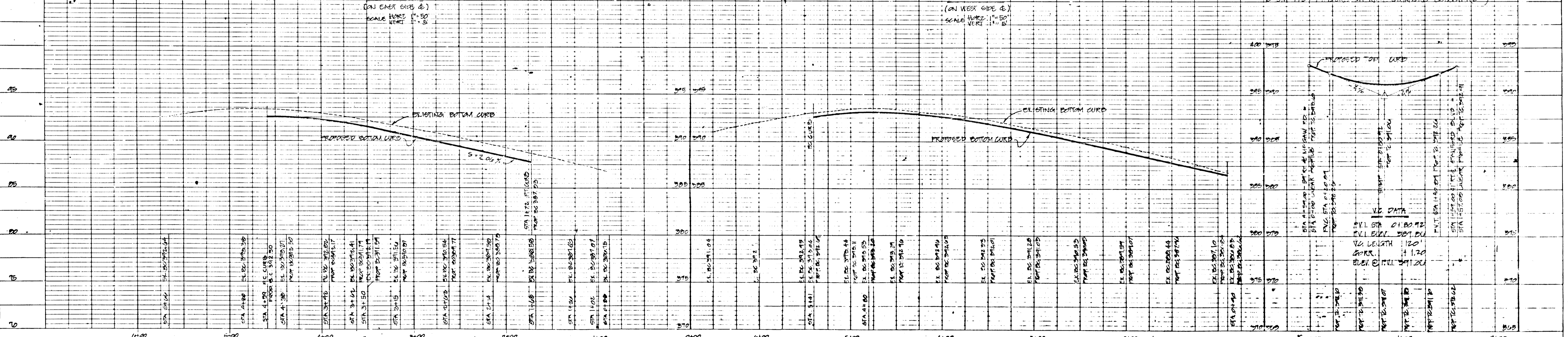
DEVELOPER'S CERTIFICATE

I CERTIFY THAT ALL DEVELOPMENT AND/OR CONSTRUCTION WILL BE DONE ACCORDING TO THESE PLANS AND THAT ANY RESPONSIBLE PERSONNEL INVOLVED IN THIS CONSTRUCTION PROJECT WILL HAVE A CERTIFICATE OF ATTENDANCE AT A DEPT. OF NATURAL RESOURCES APPROVED TRAINING PROGRAM FOR THE CONTROL OF SEDIMENT AND EROSION BEFORE BEGINNING THE PROJECT.

DEVELOPER: *George W. Stephens Jr.* DATE: 11-4-87

The Development is approved for soil erosion & sediment control by the Howard County Soil Conservation District.

Robert W. Zehm 4-5-88
Approved: Howard Soil Conservation District
Date



DEPARTMENT OF PUBLIC WORKS
HOWARD COUNTY, MARYLAND

Walter L. Felt 4-8-88
DATE

George W. Stephens Jr. 4-8-88
DATE

CHIEF, BUREAU OF ENGINEERING

GEORGE W. STEPHENS JR. & ASSOCIATES INC.
302 MURKINWAY AVENUE
TOWSON, MD. 21284
301-825-8120

DES: WZ
DRN: EWL
CHK: PRG
DATE: 08/25/87

GWS | KEY NE FILLET MCGAW RD & STANFORD BLVD. 11/21/80
CURVE N = MCGAW RD ADDED I-6, I-7 & I-8

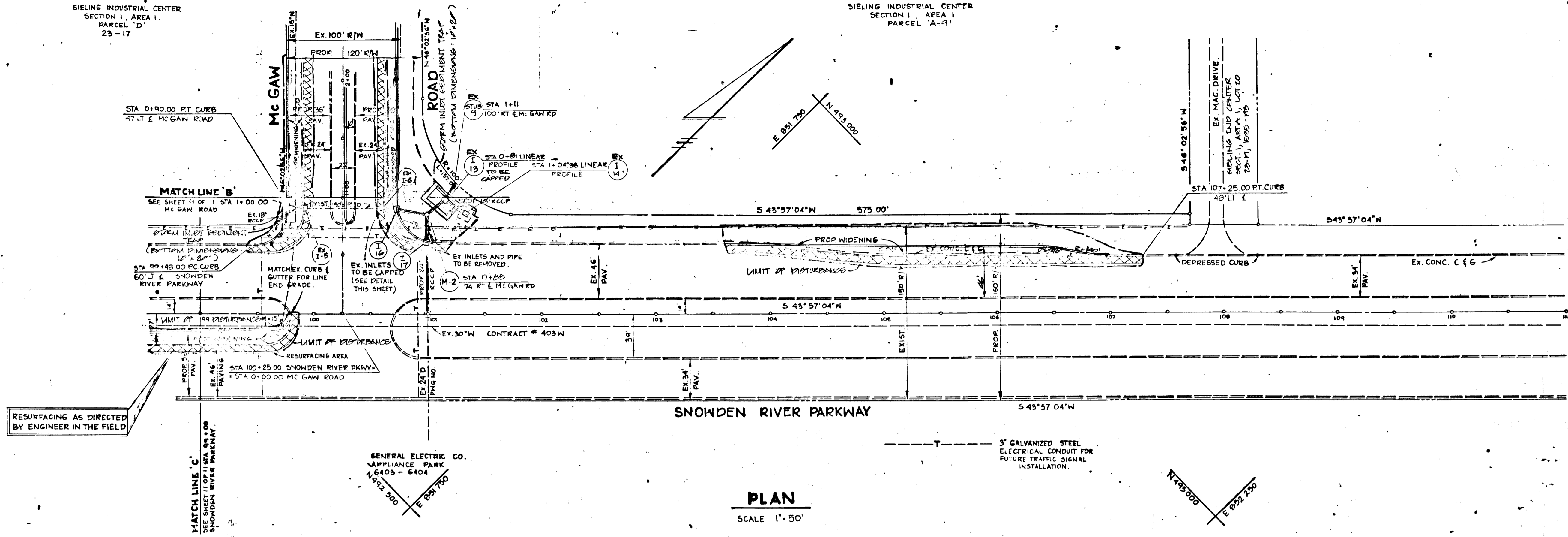
MCGAW ROAD
STA 2100 TO STA 7100

SEDIMENT & EROSION CONTROL PLAN
COLUMBIA CORPORATE PARK
SEILING INDUSTRIAL CENTER
SECTION I AREA I PARCELS A-1-A-9
HOWARD CO, MD. ELECT. DISTRICT 6
AUGUST 25 1987

SCALE AS SHOWN
SHEET 9 OF 11

SIELING INDUSTRIAL CENTER
SECTION 1, AREA 1
PARCEL 'D'
23-17

SIELING INDUSTRIAL CENTER
SECTION 1, AREA 1
PARCEL 'A-9'

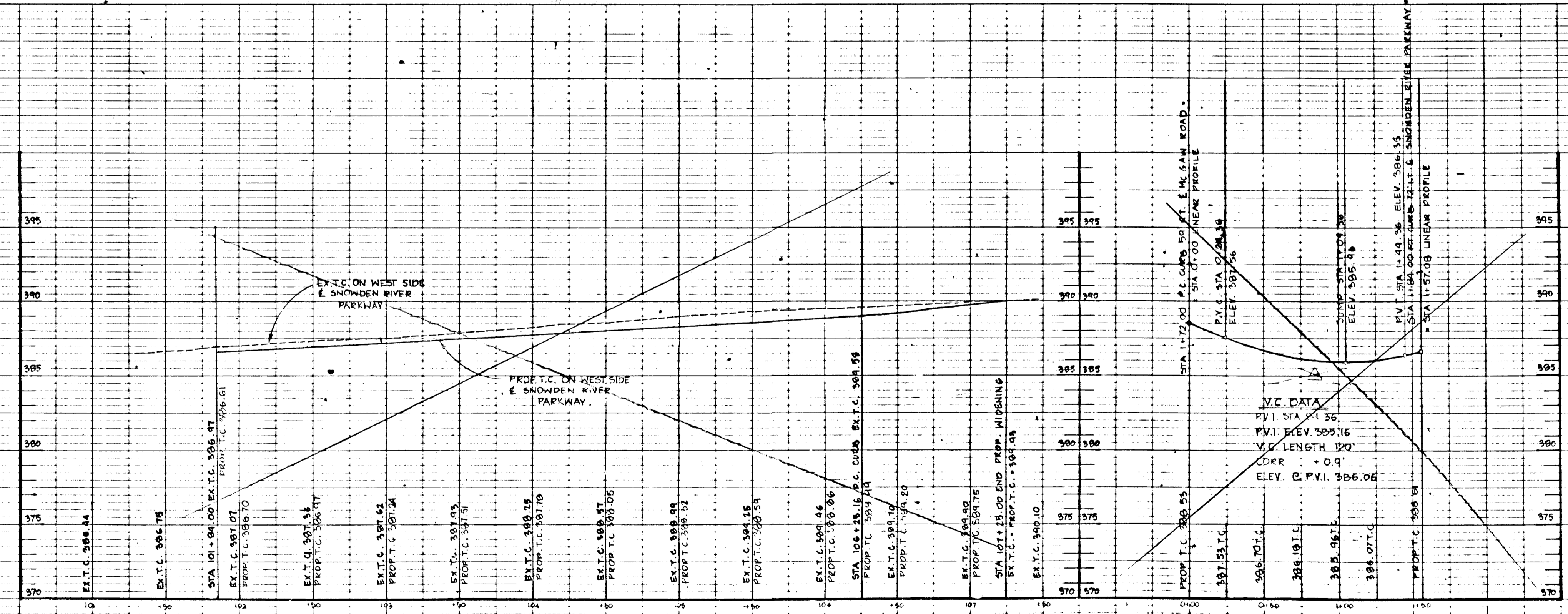


PLAN

SCALE 1" = 50'

OFFICE OF PLANNING & ZONING
Howard County 4/13/88
DATE

Howard County Soil Conservation District
The Development is approved for soil erosion & sediment control by the Howard County Soil Conservation District.
Approved: *Robert J. Zeman* 4-5-88
Reviewed for Howard County Soil Conservation District and meets technical requirements.
Approved: *John Mitchell* 4-5-88
The United States Soil Conservation Services
DEVELOPER'S CERTIFICATE
I CERTIFY THAT ALL DEVELOPMENT AND/OR CONSTRUCTION WILL BE DONE ACCORDING TO THESE PLANS AND THAT ANY RESPONSIBLE PERSONNEL INVOLVED IN THIS CONSTRUCTION PROJECT WILL HAVE A CERTIFICATE OF ATTENDANCE AT A DEPT. OF NATURAL RESOURCES APPROVED TRAINING PROGRAM FOR THE CONTROL OF SEDIMENT AND EROSION BEFORE BEGINNING THE PROJECT.
DEVELOPER: *W.K. [Signature]* DATE: 11-4-87
ENGINEER'S CERTIFICATE
I CERTIFY THAT THIS PLAN FOR CONSTRUCTION, EROSION AND SEDIMENT CONTROL REPRESENTS A PRACTICAL AND WORKABLE PLAN BASED ON MY PERSONAL KNOWLEDGE OF THE SITE CONDITIONS. THIS PLAN WAS PREPARED IN ACCORDANCE WITH THE REQUIREMENTS OF THE SITE CONDITIONS. THIS PLAN WAS PREPARED IN ACCORDANCE WITH THE REQUIREMENTS OF THE HOWARD SOIL CONSERVATION DISTRICT.
Valabrata Chatterjee 8930 10/27/87
ENGINEER: [Signature] DATE: 10/27/87



WIDENING PROFILE

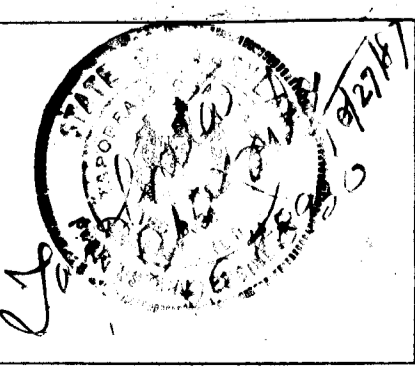
SNOWDEN RIVER PARKWAY
FROM STA 101+84.00 TO STA 107+25.00
SCALE: HORIZ. 1" = 50'
VERT. 1" = 5'

LINEAR PROFILE

SCALE: HORIZ. 1" = 50'
VERT. 1" = 5'

DEPARTMENT OF PUBLIC WORKS
HOWARD COUNTY, MARYLAND
William F. [Signature] 4-8-88
CHIEF, LAND DEVELOPMENT DIVISION
James W. Williams 4/1/88
CHIEF, BUREAU OF ENGINEERING

GEORGE W. STEPHENS JR. & ASSOCIATES INC.
303 ALLEGHENY AVENUE
TOWSON, MD 21284
301-825-0120

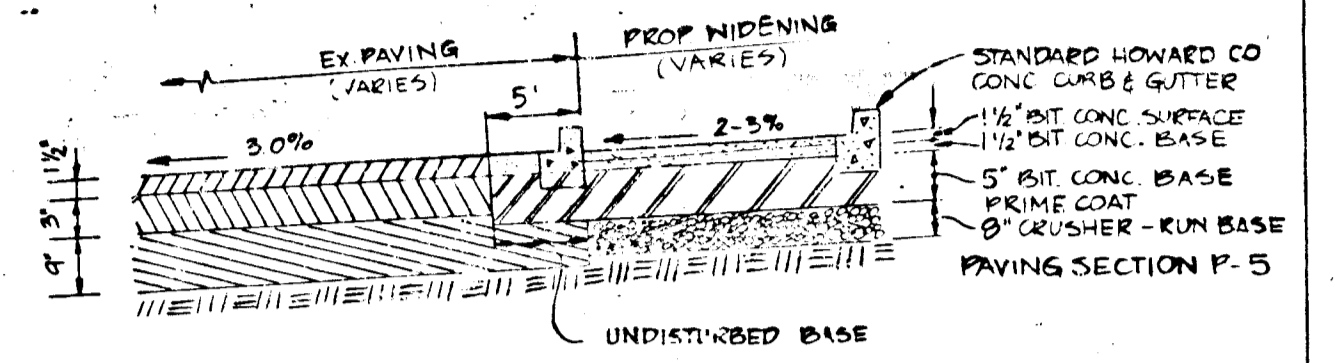
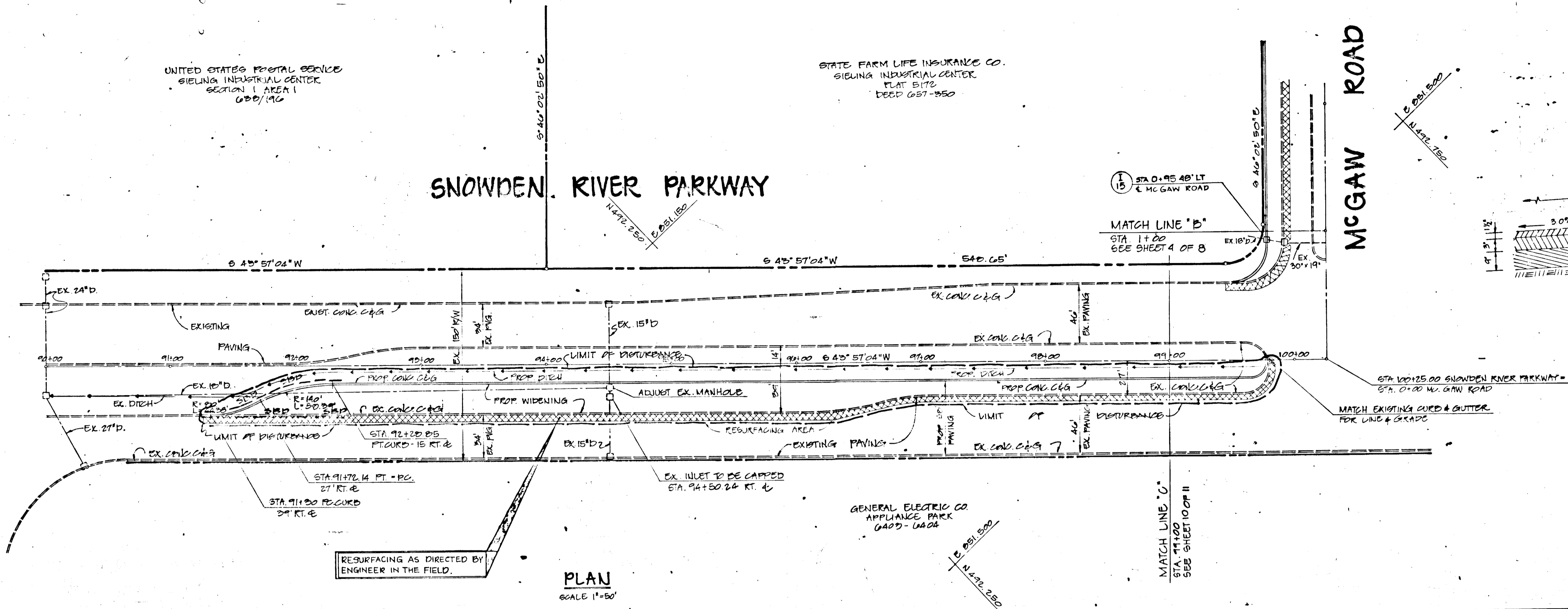


DES. W.Z.	REVISION	DATE
DRN. J.W.	REV. CURB NE SIDE MCGAWN RD	11/21/80
CHK. P.R.C.	REV. WIDENING SNOWDEN RIVER PARKWAY	
DATE: 08-25-87	BY: NO.	REVISION

SNOWDEN RIVER PARKWAY
STA 99+00.00 TO STA 107+25.00
600' SCALE MAP NO. 35 BLOCK NO. 23124

SEDIMENT & EROSION CONTROL PLAN
COLUMBIA CORPORATE PARK
SIELING INDUSTRIAL CENTER
SECTION 1, AREA 1, PARCELS 'A-1'-'A-9'
HOWARD CO., MD. ELECT. DISTRICT 6
AUGUST 25 1987

SCALE AS SHOWN
SHEET 10 OF 11

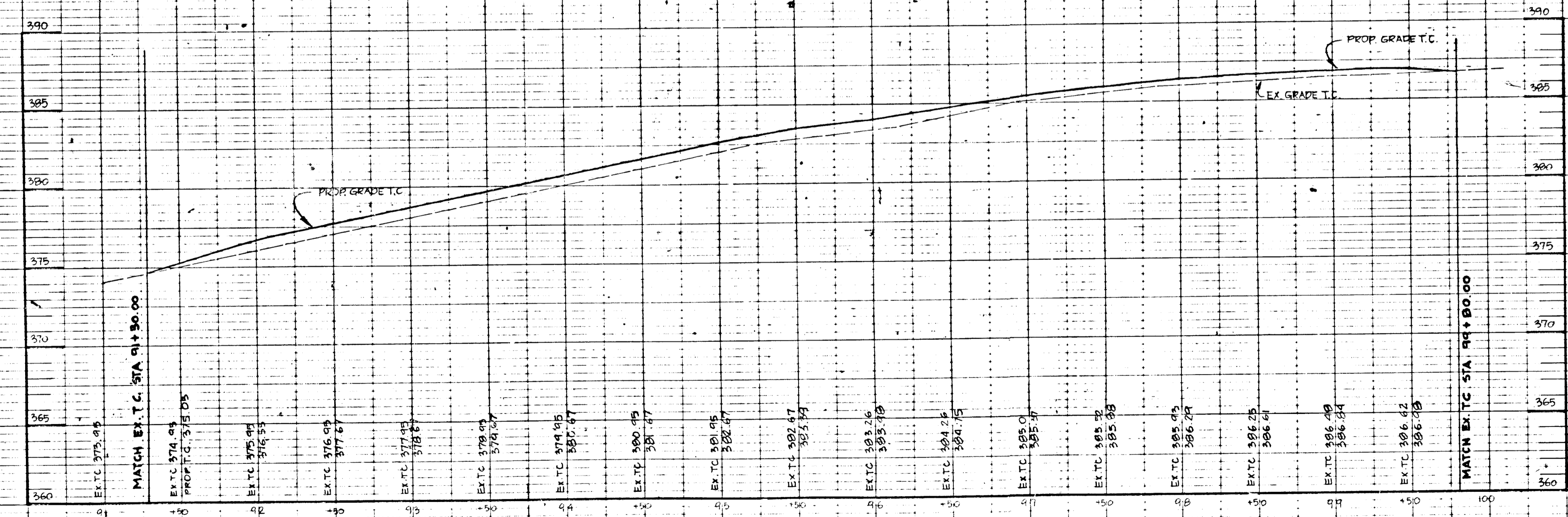


WIDENING DETAIL
NOT TO SCALE

OFFICE OF PLANNING & ZONING
Stephan L. A. ... 4/15/88
PLANNING & ZONING DIVISION
LAND DEVELOPMENT

PLAN
SCALE 1"=50'

WIDENING PROFILE
SNOWDEN RIVER PARKWAY
FROM STA 91+30.00 TO STA 99+30.00
SCALE: HORIZ: 1"=50'
VERT: 1"=5'

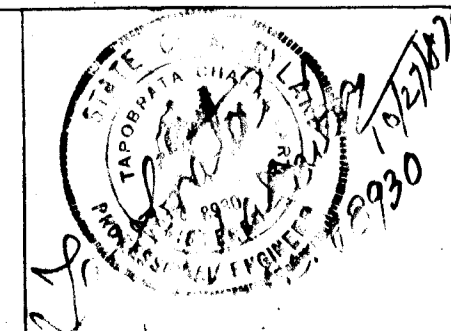


SEDIMENT CONTROL MEASURES FOR THIS CONTRACT WILL BE IMPLEMENTED IN ACCORDANCE WITH THE STANDARD SPECIFICATIONS AND SOP 67-113.

Howard County Soil Conservation District
The Development is approved for soil erosion & sediment control by the Howard County Soil Conservation District.
Stephan L. A. ... 4/15/88
Approved: Howard Soil Conservation District
Reviewed for Howard Soil Conservation District and meets technical requirements.
John M. ... 7-5-88
The United States Soil Conservation Services
DEVELOPER'S CERTIFICATE
I CERTIFY THAT ALL DEVELOPMENT AND/OR CONSTRUCTION WILL BE DONE ACCORDING TO THESE PLANS AND THAT ANY RESPONSIBLE PERSONNEL INVOLVED IN THIS CONSTRUCTION PROJECT WILL HAVE A CERTIFICATE OF ATTENDANCE AT A 1 DAY, 8 HOURS TRAINING PROGRAM APPROVED BY THE DISTRICT FOR THE CONTROL OF SEDIMENT AND EROSION BEFORE BEGINNING THE PROJECT.
DEVELOPER: *Winters W. ...* DATE: 11-4-87
ENGINEER'S CERTIFICATE
I CERTIFY THAT THIS PLAN FOR CONSTRUCTION, EROSION AND SEDIMENT CONTROL REPRESENTS A PRACTICAL AND WORKABLE PLAN BASED ON MY PERSONAL KNOWLEDGE OF THE SITE CONDITIONS. THIS PLAN WAS PREPARED IN ACCORDANCE WITH THE REQUIREMENTS OF THE SITE CONDITIONS. THIS PLAN WAS PREPARED IN ACCORDANCE WITH THE REQUIREMENTS OF THE HOWARD SOIL CONSERVATION DISTRICT.
Debra ... 8830 10/27/87
ENGINEER: *Debra ...* DATE

DEPARTMENT OF PUBLIC WORKS
HOWARD COUNTY, MARYLAND
Michael H. ... 4-8-88
CHIEF, LAND DEVELOPMENT DIVISION
William ... 4/1/88
CHIEF, BUREAU OF ENGINEERING

GEORGE W. STEPHENS JR. & ASSOCIATES INC.
305 ALLEGHENY AVENUE
TOWSON, MD. 21284
301-825-8120



DES	WZ	
DRW	VKL	
CHK	PRG	
DATE	8-25-87	
BY	NO	
REVISION		
DATE		

SNOWDEN RIVER PARKWAY
STA 9130 TO STA 99+00
600' SCALE MAP NO. 36 BLOCK NO. 23&24

SEDIMENT & EROSION CONTROL PLAN
COLUMBIA CORPORATE PARK
SIELING INDUSTRIAL CENTER
SECTION I AREA I PARCELS 'A-1'-'A-9'
HOWARD CO, MD. ELECT. DISTRICT 10
AUGUST 23, 1987

SCALE AS SHOWN
SHEET 11 OF 11
F-88-109