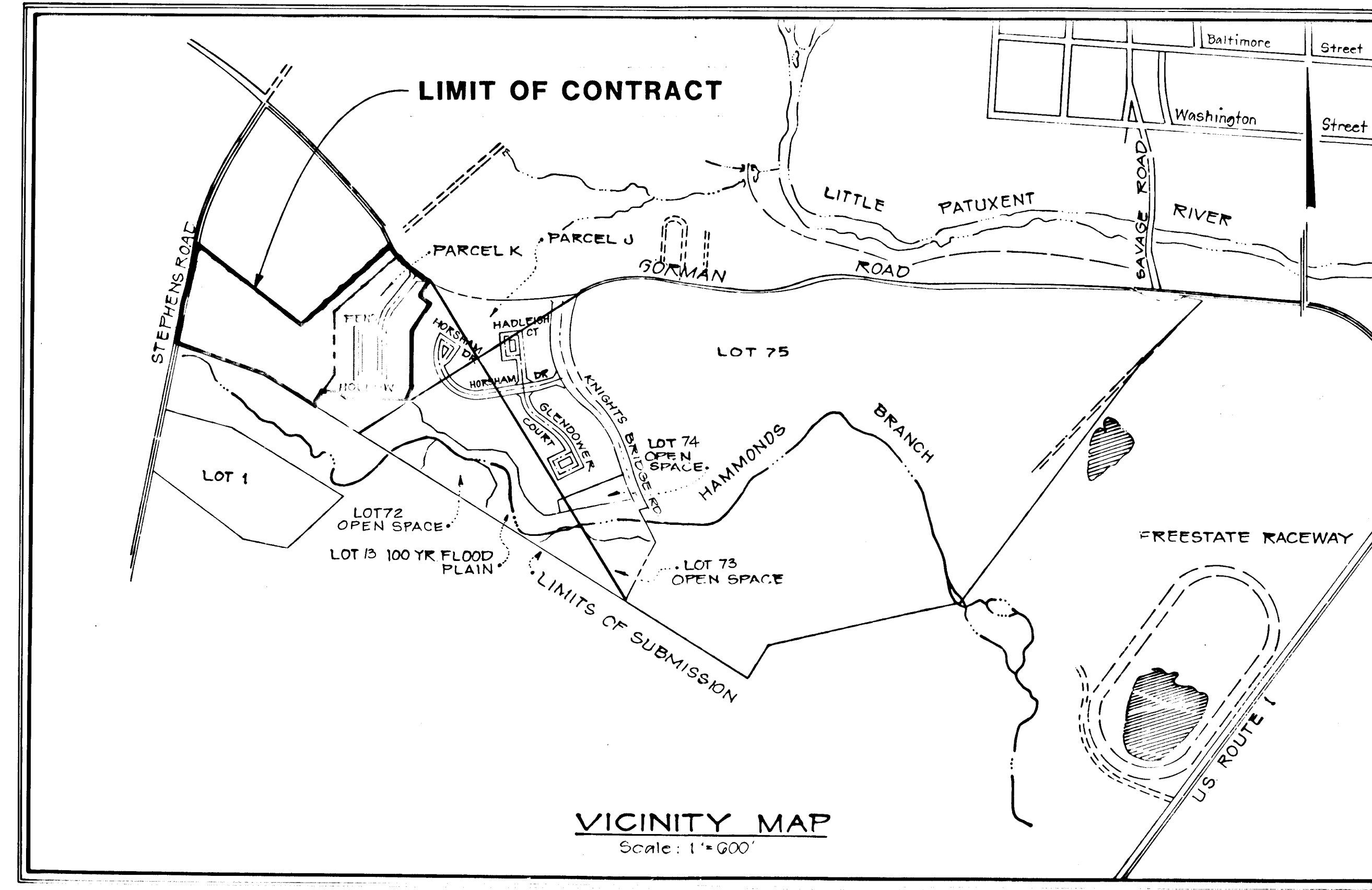


GENERAL NOTES

1. THE APPROXIMATE LOCATION OF ALL UTILITIES IS SHOWN BASED ON INFORMATION OBTAINED FROM AVAILABLE RECORDS. THE CONTRACTOR SHALL LOCATE, PROTECT AND SUPPORT THE EXISTING UTILITIES AND MAINTAIN UNINTERRUPTED SERVICE. ANY DAMAGE INCURRED SHALL BE REPAIRED IMMEDIATELY TO THE SATISFACTION OF THE ENGINEER/INSPECTOR, AT THE CONTRACTOR'S EXPENSE.
2. CONTRACTOR SHALL LOCATE EXISTING UTILITIES A MINIMUM OF TWO (2) WEEKS IN ADVANCE OF CONSTRUCTION OPERATIONS IN THE VICINITY OF PROPOSED UTILITIES AT HIS OWN EXPENSE.
3. CONTRACTOR SHALL NOTIFY THE FOLLOWING UTILITIES OR AGENCIES AT LEAST FIVE (5) WORKING DAYS BEFORE STARTING WORK SHOWN ON THESE PLANS.
 - STATE HIGHWAY ADMINISTRATION - 531-5533
 - BALTIMORE GAS & ELECTRIC COMPANY - 561-2585 (CONTRACTOR SERVICES)
 - BALTIMORE GAS & ELECTRIC COMPANY - 234-6313 (UNDERGROUND DAMAGE CONTROL)
 - BALTIMORE GAS & ELECTRIC COMPANY - 298-9013 (TROUBLE SHOOTING)
 - "MISS" UTILITY - 888-257-7777
 - CHESAPEAKE & POTOMAC (C&P) TELEPHONE COMPANY - 725-9976
 - BUREAU OF UTILITIES/HOWARD COUNTY - 992-2366
4. ALL DETAILS NOT SHOWN ON THE DRAWINGS SHALL BE CONSTRUCTED IN ACCORDANCE WITH HOWARD COUNTY STANDARD DETAILS.
5. ALL MATERIALS AND CONSTRUCTION METHODS SHALL BE IN ACCORDANCE WITH HOWARD COUNTY SPECIFICATIONS AND HOWARD COUNTY DESIGN MANUAL, VOLUME IV.
6. ALL TRAFFIC CONTROL DEVICES SHALL BE IN ACCORDANCE WITH STANDARD SPECIFICATIONS FOR CONSTRUCTION AND MATERIALS, LATEST EDITION AND THE MANUAL ON UNIFORM TRAFFIC CONTROL DEVICES, LATEST EDITION.
7. TREES SHALL BE PROTECTED FROM DAMAGE TO THE MAXIMUM EXTENT POSSIBLE. TREES SIX INCH (6") DIAMETER OR GREATER (MEASURED FOUR FEET (4') ABOVE EXISTING GRADE) ADJACENT TO THE LIMITS OF CONSTRUCTION SHALL NOT BE REMOVED OR DAMAGED BY THE CONTRACTOR.
8. ALL HORIZONTAL AND VERTICAL CONTROLS ARE BASED ON MARYLAND STATE PLANE COORDINATES SYSTEM PROVIDED BY HOWARD COUNTY.
9. TOPOGRAPHY TAKEN FROM MAPS PREPARED BY PHOTOGRAMMETRY BY "AERIAL SURVEYS" IN 1984. TOPOGRAPHY FIELD CHECKED 1986.
10. ALL PIPE ELEVATIONS ARE INVERT ELEVATIONS.
11. CLEAR ALL UTILITIES BY A MINIMUM OF 12" CLEAR. CLEAR ALL POLES BY 2'-0" MINIMUM OR TUNNEL AS REQUIRED. ANY COST INCURRED TO THE CONTRACTOR FOR TUNNELING OR BRACING AT POLES SHALL BE INCLUDED IN UNIT PRICES BID FOR EXCAVATION AND SHALL BE INCLUDED IN UNIT PRICES BID FOR EXCAVATION BACKFILL.
12. ALL PIPE BEDDING SHALL BE CLASS C.
13. ROAD RIGHT OF WAY INFORMATION IS SHOWN ON THE RECORD PLATS.
14. SPOT ELEVATIONS SHOWN ARE TOP OF CURB UNLESS OTHERWISE NOTED.
15. SHADED AREAS INDICATE WATER, SEWER, UTILITY, DRAINAGE AND ACCESS EASEMENT.

BOWLING BROOK FARMS

LOTS 3 THRU 71



STRUCTURE SCHEDULE									
NO	TYPE	INV. IN	INV. OUT	UPPER END	LOWER END	HO.CO. STD	LOCATION		
I-1	A-10 INLET	257.50 (NE)	257.15	263.05	263.75	SD-4.02	8+00.32'L		
I-2	A-5 INLET	257.90 (NW)	259.50	262.11	264.24	SD-4.01	8+97.14'R		
I-3	A-10 INLET	261.60 (SW)	264.66	262.16	264.24	SD-4.02	9+90.14'L		
I-4	A-10 INLET	268.25	265.00	272.02	271.62	SD-4.02	5+76.14'L		
I-5	A-10 INLET		278.99	282.57	282.01	SD-4.02	3+02.14'R		
I-6	A-10 INLET	278.75	278.20	283.51	282.65	SD-4.02	3+02.14'L		
I-7	A-10 INLET	267.80 (E)	268.70	272.90	272.90	SD-4.02	27+67.32'R		
I-8	A-10 INLET	267.80 (E)	268.70	272.90	272.90	SD-4.02	27+67.32'R		
I-9	A-10 INLET	267.80 (E)	268.70	272.90	272.90	SD-4.02	27+67.32'R		
I-10	A-10 INLET	267.80 (E)	268.70	272.90	272.90	SD-4.02	27+67.32'R		
I-11	A-10 INLET	267.80 (E)	268.70	272.90	272.90	SD-4.02	27+67.32'R		
I-12	A-10 INLET	267.80 (E)	268.70	272.90	272.90	SD-4.02	27+67.32'R		
I-13	A-10 INLET	267.80 (E)	268.70	272.90	272.90	SD-4.02	27+67.32'R		
I-13A	A-10 INLET	267.80 (E)	268.70	272.90	272.90	SD-4.02	27+67.32'R		
I-14	A-10 INLET	267.80 (E)	268.70	272.90	272.90	SD-4.02	27+67.32'R		
I-15	A-10 INLET	267.80 (E)	268.70	272.90	272.90	SD-4.02	27+67.32'R		
I-16	A-5 INLET	267.12	267.12	273.94	273.85	SD-4.01	17+88.14'L		
I-17	A-5 INLET	267.86	267.86	273.89	273.78	SD-4.01	17+85.14'R		
I-18	A-10 INLET	268.67	268.67	273.77	273.38	SD-4.02	0+45.14'L		
I-19	A-5 INLET	269.70	269.70	273.84	273.51	SD-4.02	0+47.14'L		
I-20	A-10 INLET	261.00	261.00	265.42	265.30	SD-4.02	4+34.32'L		
I-21	A-10 INLET	258.00	258.00	262.72	262.72	SD-4.02	5+75.32'L		
L-1	FLARED END SECT.	251.69				SD-5.51	See Plan		
L-2	FLARED END SECT.	251.69				SD-5.51	See Plan		
L-3	FLARED END SECT.	251.69				SD-5.51	See Plan		
L-30	YARD INLET	253.02	260.24	262.31	262.31	SD-4.14	See Plan		
MH-1	MANHOLE	253.02	252.02	262.31	262.31	SD-G.512	See Plan		
MH-3	MANHOLE	265.55	265.55	271.60	271.60	SD-G.512	17+30.19'L		
MH-4	MANHOLE	269.70	269.70	273.84	273.84	SD-G.512	See Plan		
MH-5	MANHOLE	269.70	269.70	273.84	273.84	SD-G.512	See Plan		
MH-6	MANHOLE	218.00	218.00	273.84	273.84	SD-G.513	41+43.55'R		
I-22	A-5 INLET	262.78	262.78	267.14	266.93	SD-4.02	53+77.36'R		
L-35	FLARED END SECT.	250.1	250.1	255.85	255.85	SD-5.51	0+40.38'R		
I-36	A-5 INLET W/D	251.3	250.3	255.85	255.85	SD-4.02	0+96.22'R		
I-37	A-5 INLET W/D	251.3	250.3	255.85	255.85	SD-4.02	4+30.22'R		

* STRUCTURE LOCATION IS TO FACE OF CURB.
 ** STRUCTURE WIDTH SHALL BE 2'-0" UNLESS NOTED OTHERWISE
 () - STRUCTURE WIDTH SHALL BE 3'-0" UNLESS NOTED OTHERWISE
 (O) - STRUCTURE WIDTH SHALL BE 3'-6" UNLESS NOTED OTHERWISE

LEGEND

STORM DRAIN PROPOSED & PROPOSED R/W LIMITS OF SUBMISSION EASEMENT

HC HANDICAP PKG SPACE
 FLARED END SECTION
 HCR HANDICAP RAMP

250 WATT MERCURY VAPOR LAMP PENDANT MOUNTED ON 30 FOOT GALVANIZED STEEL POLE
 175 WATT MERCURY VAPOR LAMP POST TOP FIXTURE ON 14 FOOT GRAY FIBERGLASS POLE

PAVING AND STORM DRAIN CONSTRUCTION PLAN

HOWARD COUNTY, MARYLAND

PIPE SCHEDULE			
DIA	MATERIAL	CLASS	LENGTH (FT)
15"	RCP	IV	210
15"	RCP	V	604
18"	RCP	III	61
18"	RCP	IV	0
21"	RCP	IV	—
24"	RCP	III	47
24"	RCP	IV	—
27"	RCP	III	—
36"	RCP	III	—

- NOTES:
1. CONTRACTOR SHALL VERIFY LOCATION OF ALL UNDERGROUND UTILITIES PRIOR TO PLANTING (SEE NOTE #3 ON SHEET #1).
 2. ALL PLANT MATERIAL AND PLANTING SHALL BE IN ACCORDANCE WITH "AMERICAN STANDARD FOR NURSERY STOCK" BY THE A.A.N. SUBSTITUTIONS MAY BE PERMITTED WITH THE APPROVAL OF THE LANDSCAPE ARCHITECT, (762-2220).
 3. PLACE "GREEN VASE ZELKOVA" AND "SUMMER SHADE MAPLE" AT RADIUS POINTS ON THE PARKING ISLANDS AND 5' BEHIND THE SIDEWALK ALONG THE ROADWAYS.
 4. PLACE "REGENT SCHOLAR TREE", "GREENSPIRE LINDEN", AND "HEDGE MAPLE" 3' BEHIND SIDEWALK.

PLANT SCHEDULE				
KEY	PLANT NAME	SIZE	QUANTITY	REMARKS
(Z)	ZELKOVA SERRATA "GREEN VASE"	2 1/2"-3" CAL		B & B
(Z)	GREEN VASE ZELKOVA	12-14' HT.		
(P)	ACER PLATANOIDES "SUMMERSHADE"			
(P)	SUMMER SHADE MAPLE			
(S)	SOPHORA JAPONICA "REGENT"			
(S)	REGENT SCHOLAR TREE			
(T)	TILIA CORDATA "GREENSPIRE"			
(T)	GREENSPIRE LINDEN			
(C)	ACER CAMPESTRE			
(C)	HEDGE MAPLE			

INDEX TO DRAWINGS	
SHEET #	DESCRIPTION
1	TITLE SHEET
2	PAVING AND STORM DRAINAGE - FENS HOLLOW
3	STORM DRAIN PROFILES
4	STORM DRAIN PROFILES
5	DRAINAGE AREA MAP
6	PAVING AND STORM DRAINAGE SECTIONS AND DETAILS
7	EROSION AND SEDIMENT CONTROL PLAN - DETAIL SHEET
8	EROSION AND SEDIMENT CONTROL PLAN - FENS HOLLOW DRIVE
9	PAVING AND STORM DRAINAGE - STEVENS ROAD

REVIEWED FOR HOWARD SOIL CONSERVATION DISTRICT AND MEETS TECHNICAL REQUIREMENT

Jana M. Nelson
 SIGNATURE
 U.S. SOIL CONSERVATION SERVICE

8-26-87
 DATE

SEDIMENT CONTROL MEASURE FOR THIS CONTRACT WILL BE IMPLEMENTED IN ACCORDANCE WITH ARTICLE 15 OF THE STANDARD SPECIFICATIONS AND ROAD CONSTRUCTION PLAN F 87 142 AND SDP 87 182

APPROVED: DEPARTMENT OF PUBLIC WORKS

William B. ...
 Chief, Bureau of Engineering
 APPROVED: HOWARD COUNTY OFFICE OF PLANNING AND ZONING

9-1-87
 Date

THIS DEVELOPMENT PLAN IS APPROVED FOR SOIL EROSION AND SEDIMENT CONTROL BY THE HOWARD COUNTY CONSERVATION DISTRICT.

APPROVED: *Robert W. Zehm*
 HOWARD SCD
 DATE 8-28-87

William B. ...
 Chief, Division of Land Development & Zoning Administration
 DATE 8-31-87

OWNER/DEVELOPER
 GORMAN ROAD LIMITED PARTNERSHIP
 C/O JAMES F. KNOTT DEVELOPMENT CORPORATION
 110 WEST ROAD, SUITE 203
 TOWSON, MARYLAND 21284
 (801) 321-6436

NO.	DESCRIPTION	DATE	APPROVED	DATE
1	AS-BUILT REVISIONS	5/27/87		
2	REVISED TO SHOW PARCEL 308	8/10/87		
3	REVISED TO SHOW PARCEL 308	8/10/87		
4	REVISED TO SHOW PARCEL 308	8/10/87		
5	REVISED TO SHOW PARCEL 308	8/10/87		
6	REVISED TO SHOW PARCEL 308	8/10/87		
7	REVISED TO SHOW PARCEL 308	8/10/87		
8	REVISED TO SHOW PARCEL 308	8/10/87		
9	REVISED TO SHOW PARCEL 308	8/10/87		
10	REVISED TO SHOW PARCEL 308	8/10/87		
11	REVISED TO SHOW PARCEL 308	8/10/87		
12	REVISED TO SHOW PARCEL 308	8/10/87		
13	REVISED TO SHOW PARCEL 308	8/10/87		
14	REVISED TO SHOW PARCEL 308	8/10/87		
15	REVISED TO SHOW PARCEL 308	8/10/87		
16	REVISED TO SHOW PARCEL 308	8/10/87		
17	REVISED TO SHOW PARCEL 308	8/10/87		
18	REVISED TO SHOW PARCEL 308	8/10/87		
19	REVISED TO SHOW PARCEL 308	8/10/87		
20	REVISED TO SHOW PARCEL 308	8/10/87		
21	REVISED TO SHOW PARCEL 308	8/10/87		
22	REVISED TO SHOW PARCEL 308	8/10/87		
23	REVISED TO SHOW PARCEL 308	8/10/87		
24	REVISED TO SHOW PARCEL 308	8/10/87		
25	REVISED TO SHOW PARCEL 308	8/10/87		
26	REVISED TO SHOW PARCEL 308	8/10/87		
27	REVISED TO SHOW PARCEL 308	8/10/87		
28	REVISED TO SHOW PARCEL 308	8/10/87		
29	REVISED TO SHOW PARCEL 308	8/10/87		
30	REVISED TO SHOW PARCEL 308	8/10/87		
31	REVISED TO SHOW PARCEL 308	8/10/87		
32	REVISED TO SHOW PARCEL 308	8/10/87		
33	REVISED TO SHOW PARCEL 308	8/10/87		
34	REVISED TO SHOW PARCEL 308	8/10/87		
35	REVISED TO SHOW PARCEL 308	8/10/87		
36	REVISED TO SHOW PARCEL 308	8/10/87		
37	REVISED TO SHOW PARCEL 308	8/10/87		
38	REVISED TO SHOW PARCEL 308	8/10/87		
39	REVISED TO SHOW PARCEL 308	8/10/87		
40	REVISED TO SHOW PARCEL 308	8/10/87		
41	REVISED TO SHOW PARCEL 308	8/10/87		
42	REVISED TO SHOW PARCEL 308	8/10/87		
43	REVISED TO SHOW PARCEL 308	8/10/87		
44	REVISED TO SHOW PARCEL 308	8/10/87		
45	REVISED TO SHOW PARCEL 308	8/10/87		
46	REVISED TO SHOW PARCEL 308	8/10/87		
47	REVISED TO SHOW PARCEL 308	8/10/87		
48	REVISED TO SHOW PARCEL 308	8/10/87		
49	REVISED TO SHOW PARCEL 308	8/10/87		
50	REVISED TO SHOW PARCEL 308	8/10/87		
51	REVISED TO SHOW PARCEL 308	8/10/87		
52	REVISED TO SHOW PARCEL 308	8/10/87		
53	REVISED TO SHOW PARCEL 308	8/10/87		
54	REVISED TO SHOW PARCEL 308	8/10/87		
55	REVISED TO SHOW PARCEL 308	8/10/87		
56	REVISED TO SHOW PARCEL 308	8/10/87		
57	REVISED TO SHOW PARCEL 308	8/10/87		
58	REVISED TO SHOW PARCEL 308	8/10/87		
59	REVISED TO SHOW PARCEL 308	8/10/87		
60	REVISED TO SHOW PARCEL 308	8/10/87		
61	REVISED TO SHOW PARCEL 308	8/10/87		
62	REVISED TO SHOW PARCEL 308	8/10/87		
63	REVISED TO SHOW PARCEL 308	8/10/87		
64	REVISED TO SHOW PARCEL 308	8/10/87		
65	REVISED TO SHOW PARCEL 308	8/10/87		
66	REVISED TO SHOW PARCEL 308	8/10/87		
67	REVISED TO SHOW PARCEL 308	8/10/87		
68	REVISED TO SHOW PARCEL 308	8/10/87		
69	REVISED TO SHOW PARCEL 308	8/10/87		
70	REVISED TO SHOW PARCEL 308	8/10/87		
71	REVISED TO SHOW PARCEL 308	8/10/87		
72	REVISED TO SHOW PARCEL 308	8/10/87		
73	REVISED TO SHOW PARCEL 308	8/10/87		
74	REVISED TO SHOW PARCEL 308	8/10/87		
75	REVISED TO SHOW PARCEL 308	8/10/87		
76	REVISED TO SHOW PARCEL 308	8/10/87		
77	REVISED TO SHOW PARCEL 308	8/10/87		
78	REVISED TO SHOW PARCEL 308	8/10/87		
79	REVISED TO SHOW PARCEL 308	8/10/87		
80	REVISED TO SHOW PARCEL 308	8/10/87		
81	REVISED TO SHOW PARCEL 308	8/10/87		
82	REVISED TO SHOW PARCEL 308	8/10/87		
83	REVISED TO SHOW PARCEL 308	8/10/87		
84	REVISED TO SHOW PARCEL 308	8/10/87		
85	REVISED TO SHOW PARCEL 308	8/10/87		
86	REVISED TO SHOW PARCEL 308	8/10/87		
87	REVISED TO SHOW PARCEL 308	8/10/87		
88	REVISED TO SHOW PARCEL 308	8/10/87		
89	REVISED TO SHOW PARCEL 308	8/10/87		
90	REVISED TO SHOW PARCEL 308	8/10/87		
91	REVISED TO SHOW PARCEL 308	8/10/87		
92	REVISED TO SHOW PARCEL 308	8/10/87		
93	REVISED TO SHOW PARCEL 308	8/10/87		
94	REVISED TO SHOW PARCEL 308	8/10/87		
95	REVISED TO SHOW PARCEL 308	8/10/87		
96	REVISED TO SHOW PARCEL 308	8/10/87		
97	REVISED TO SHOW PARCEL 308	8/10/87		
98	REVISED TO SHOW PARCEL 308	8/10/87		
99	REVISED TO SHOW PARCEL 308	8/10/87		
100	REVISED TO SHOW PARCEL 308	8/10/87		

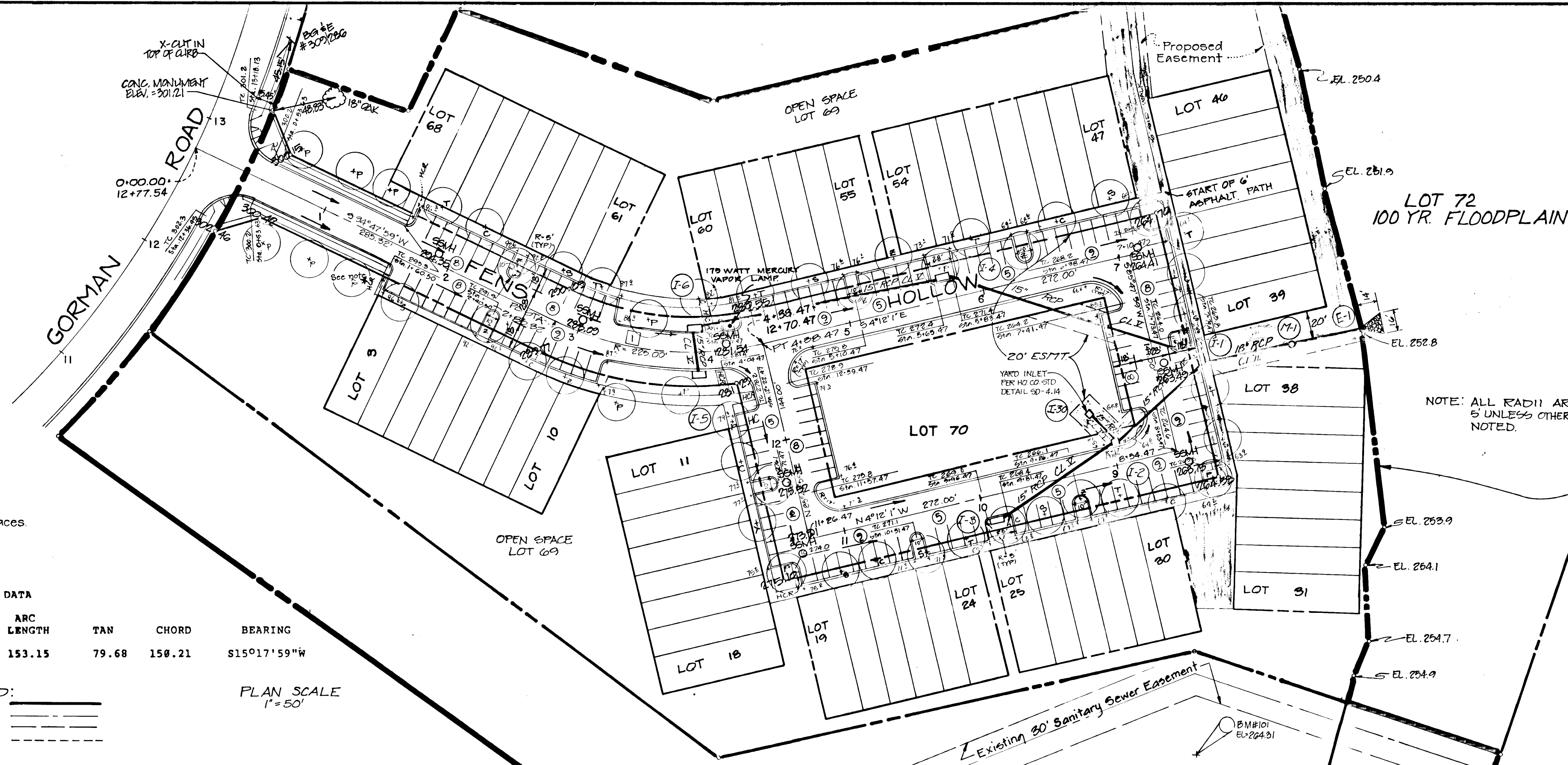
PROFESSIONAL SEAL

Patton Harris Rust and Associates
 A Professional Corporation
 Engineers, Surveyors, Planners and Landscape Architects
 Fairfax, Va./Bridgewater, Va./Leesburg, Va./Rockville, Md./Tidewater, Va.

BOWLING BROOK FARMS
 LOTS 3 THRU 71
 A RESUBDIVISION OF BOLLING BROOKE, LOT 2
 TAX MAP 47 PARCEL M1
 SIXTH ELECTON DISTRICT HOWARD COUNTY, MARYLAND

SURVEY DATE 3-9-87
 DESIGN SHEET 1 OF 2
 DRAWN GEB
 CHECKED
 SCALE C.I. AS SHOWN
 FILE NO. 2184-1-0

F-87-142



B.M.#101
R.R. SPIKE IN 16" TULIP POPLAR
TREE LOCATED ABOUT 120'
SOUTHEAST OF Δ 1020.

B.M.#105
CHISELED X IN RIN OF EXIST
M.H.#1014.

NOTE: ALL RADII ARE
5 UNLESS OTHERWISE
NOTED.

LIMITS OF SUBMISSION
(TYP.)

* See Sections & Detail Sheet for HCR & Handicap parking spaces.

CURVE DATA							
CURVE NO.	PC TO PT	RADIUS	Δ	ARC LENGTH	TAN	CHORD	BEARING
1	2+85.32 to 4+38.47	225.00	39°00'00"	153.15	79.68	150.21	S15°17'59"W

PROFILE SCALE
HORIZ: 1" = 50'
VERT: 1" = 5'

PROFILE LEGEND:
Profile Grade Line _____
Existing & B.R.L. (RT) _____
B.R.L. (LT) _____

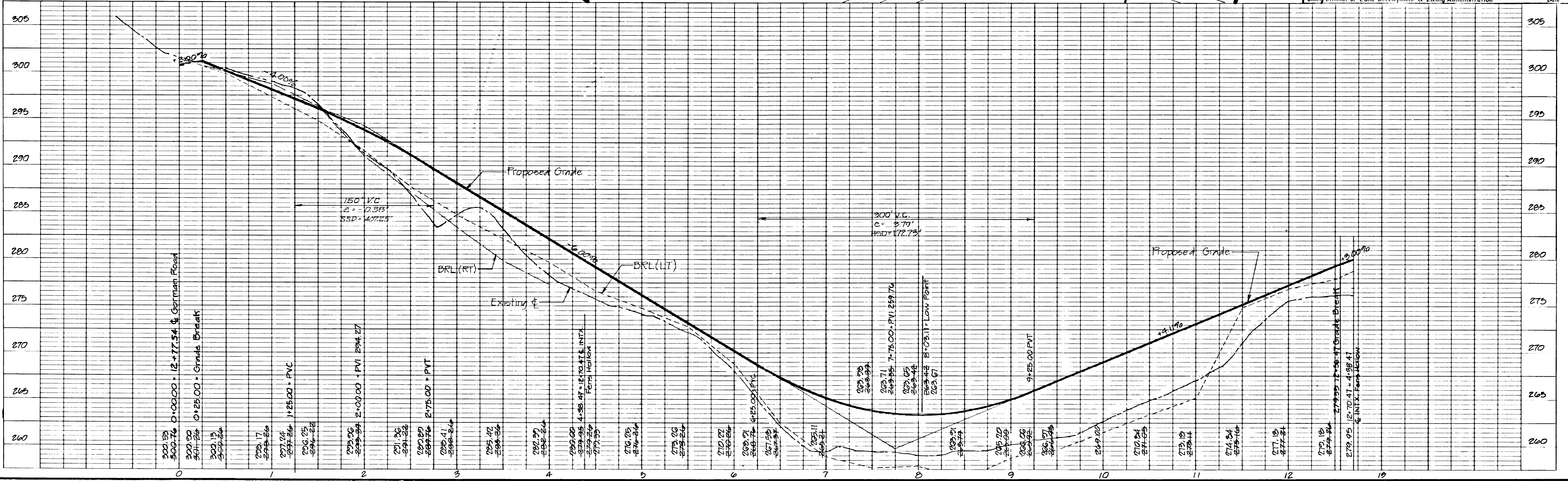
PLAN SCALE
1" = 50'

APPROVED: DEPARTMENT OF PUBLIC WORKS

[Signature] 3-1-87
Chief, Bureau of Engineering Date

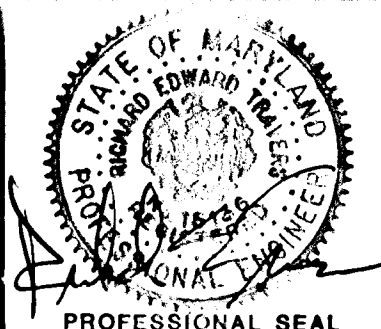
APPROVED: HOWARD COUNTY OFFICE OF PLANNING AND ZONING

[Signature] 8-31-87
Chief, Division of Land Development & Zoning Administration Date



1271

NO.	DESCRIPTION	DATE	APPROVED	DATE
E	AS-BUILT REVISIONS	8/20/87		
D	ADD MERCURY VAPOR LAMP	8/19/87		
C	REVISED TO SPLIT PARCEL J&K	8/10/87		
B	REVISED PER H&C REVIEW COMMENTS	8/10/87		
A	REVISED PER H&C REVIEW COMMENTS & LAYOUT INFO.	8/10/87		



REVISION

PAVING & STORM DRAINAGE CONSTRUCTION PLANS

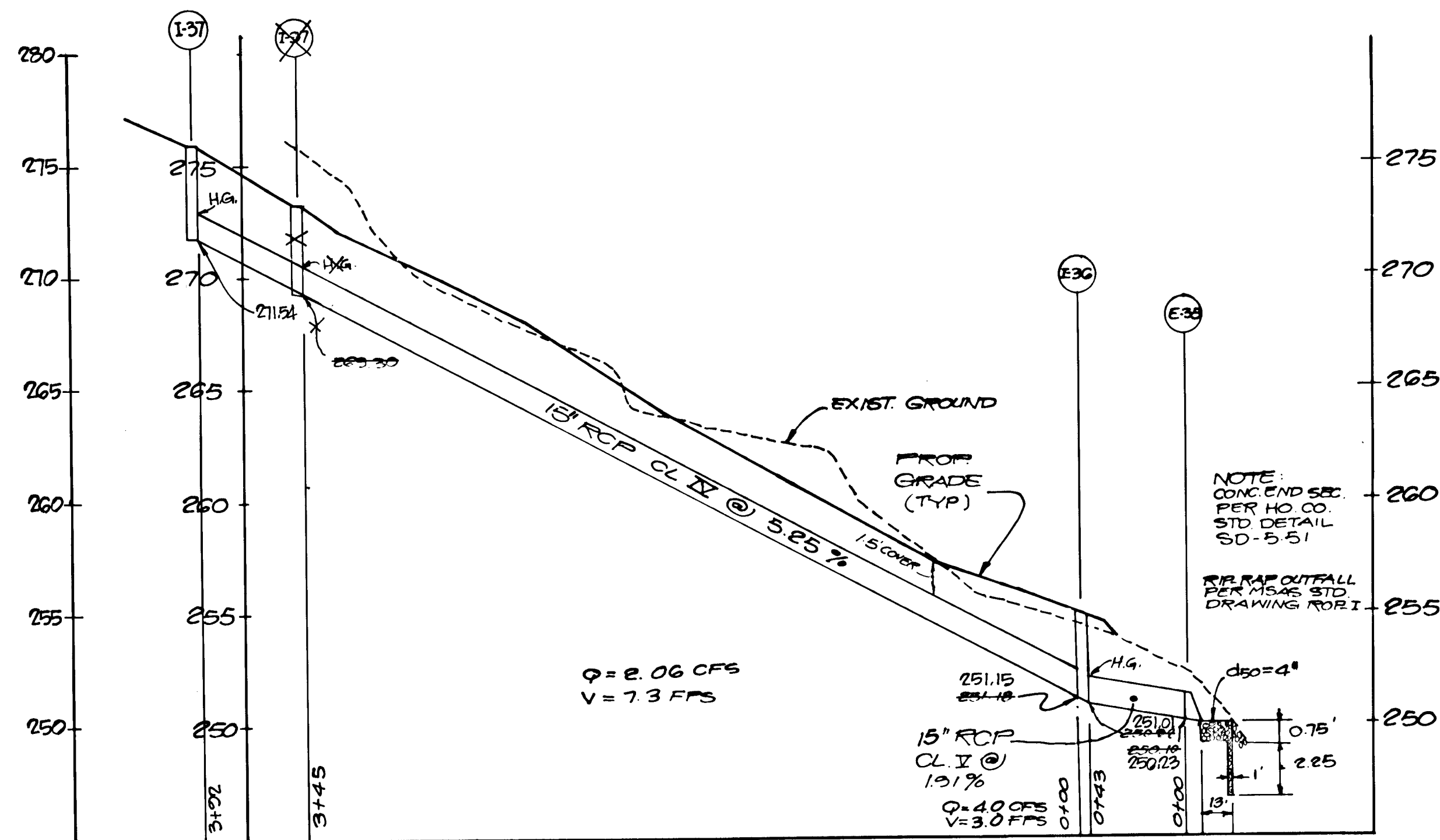
FENS HOLLOW
BOWLING BROOK FARMS

Patton Harris Rust and Associates
A Professional Corporation
Engineers, Surveyors, Planners and Landscape Architects
7609 Standish Place Rockville, Md. 20855 (301) 762-2220

BOWLING BROOK FARMS
LOTS 3 THRU 71
A RESUBDIVISION OF BOLLING BROOKE, LOT 2
TAX MAP 47 PARCEL 141
SIXTH ELECTION DISTRICT HOWARD COUNTY, MARYLAND

SURVEY	DATE
DESIGN	3/9/87
DRAWN JDW	SHEET
CHECKED JPC	2 OF 2
SCALE AS SHOWN	FILE NO.
C.I.	2184-1-0

AS-BUILT F-87-142

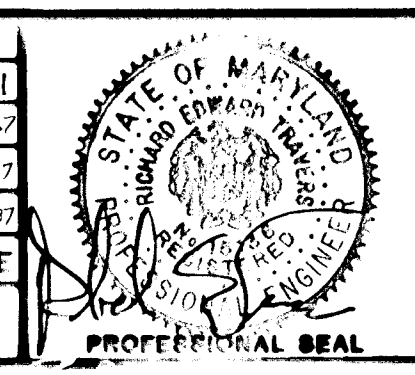


STEPHENS ROAD

APPROVED: DEPARTMENT OF PUBLIC WORKS
William S. [Signature] 9-1-87
 Chief, Bureau of Engineering
 APPROVED: HOWARD COUNTY OFFICE OF PLANNING AND ZONING
John W. [Signature] 8-31-87
 Planning Director, County Department of Land Use and Zoning Administration

127

NO.	DESCRIPTION	DATE	APPROVED	DATE
D	AS-BUILT REVISIONS	08/20/81		
C	PARCEL 1012	05/10/80		
B	PARCEL 1012 PERCO REVIEW	05/20/80		
A	LAYOUT PERCO	05/27/80		



REVISED

STORM DRAIN PROFILES

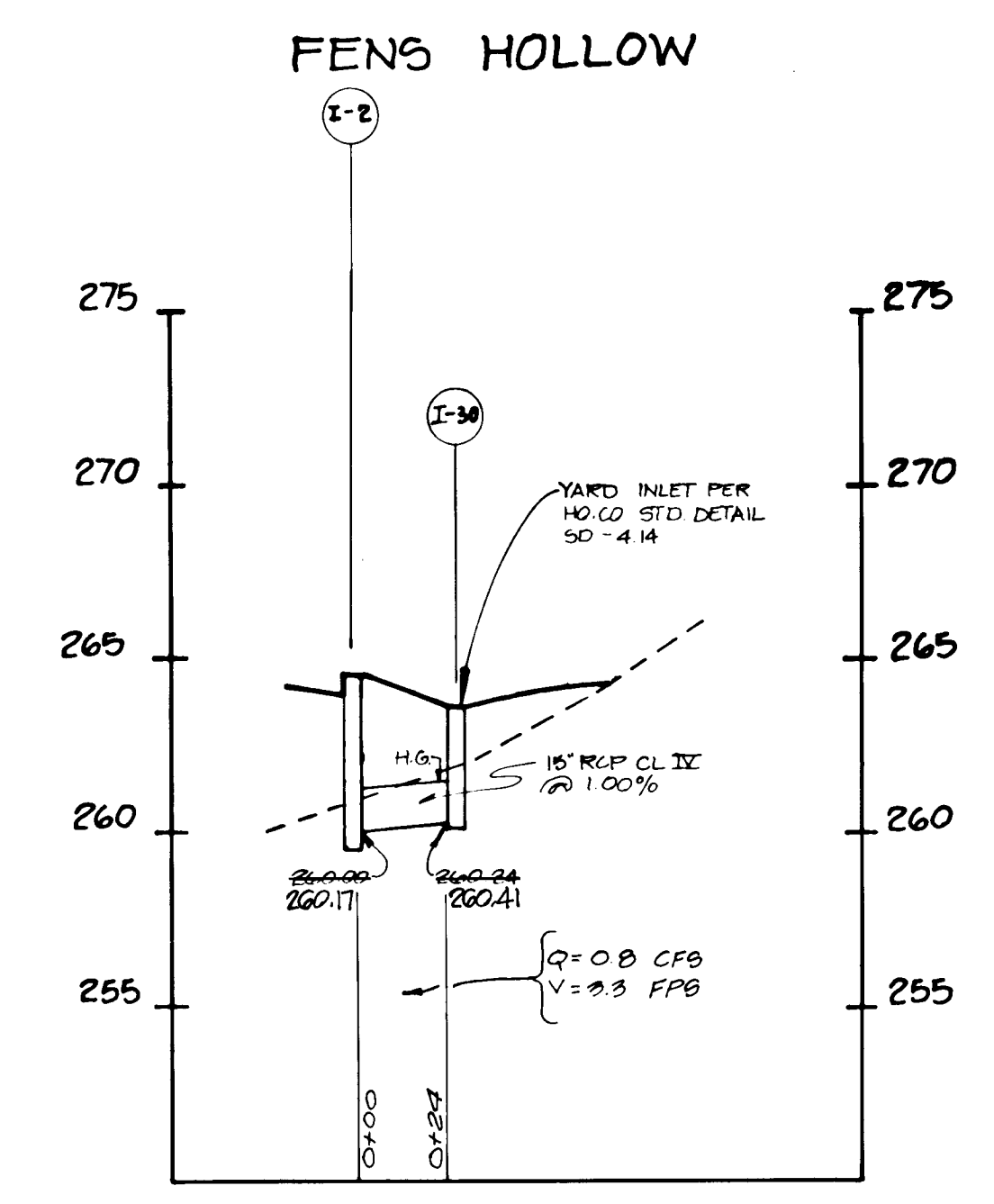
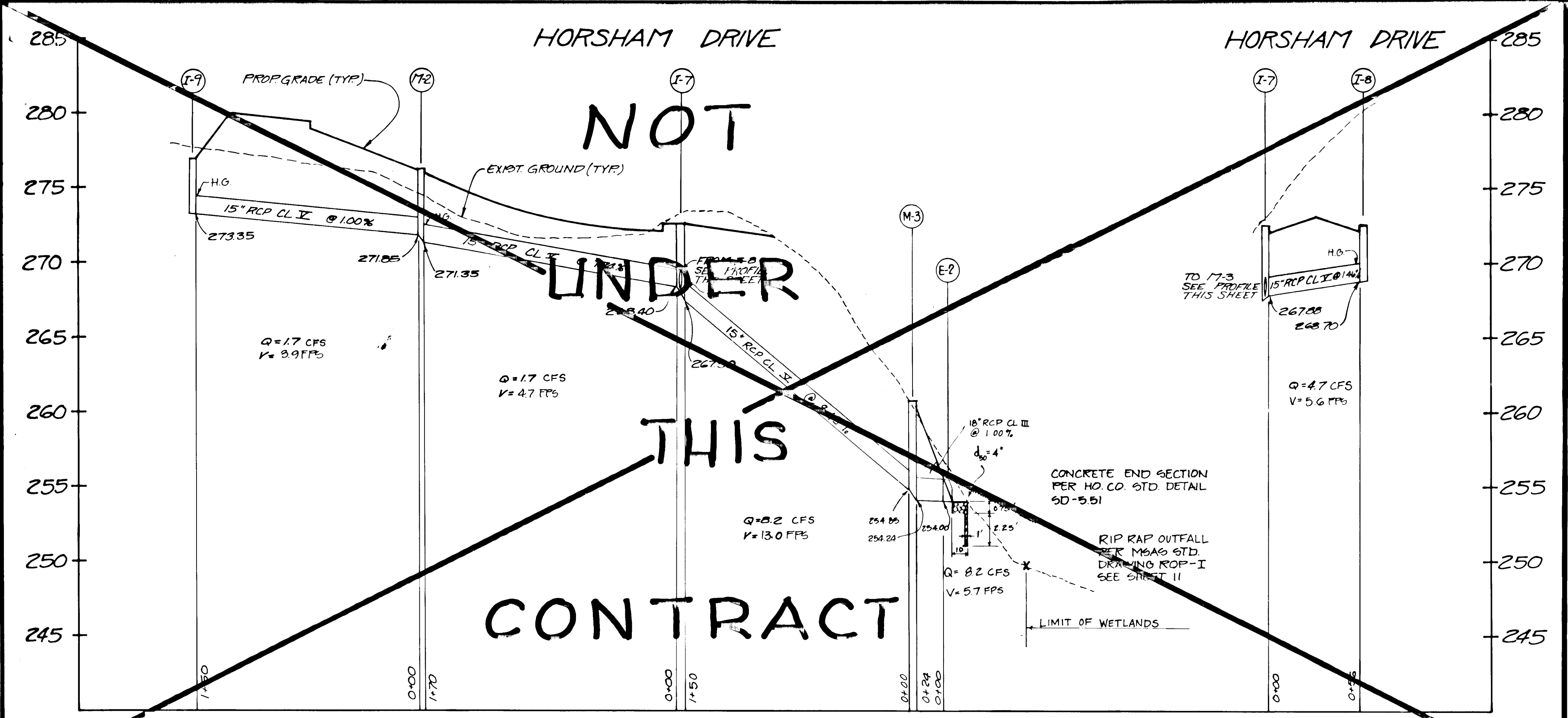
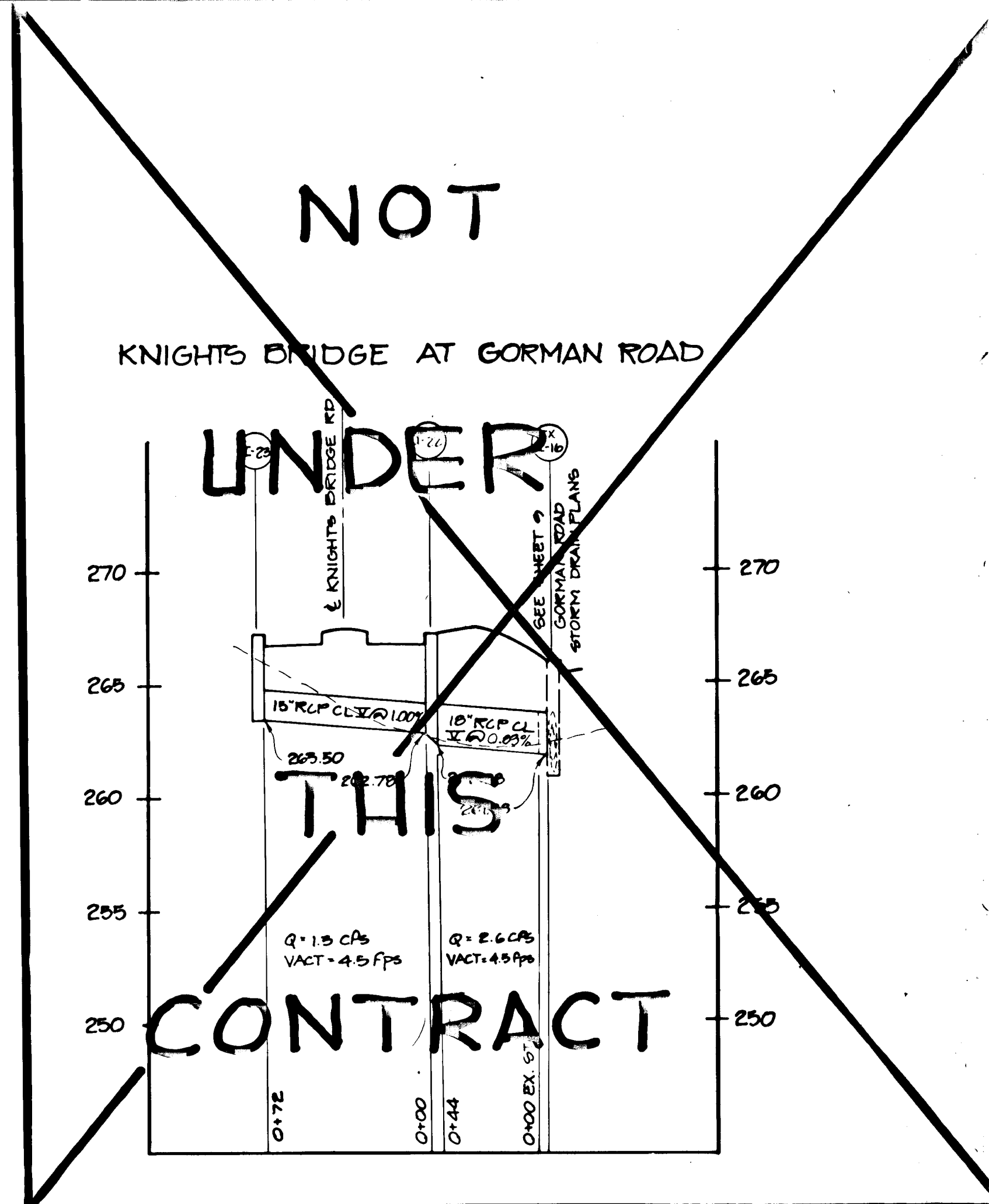
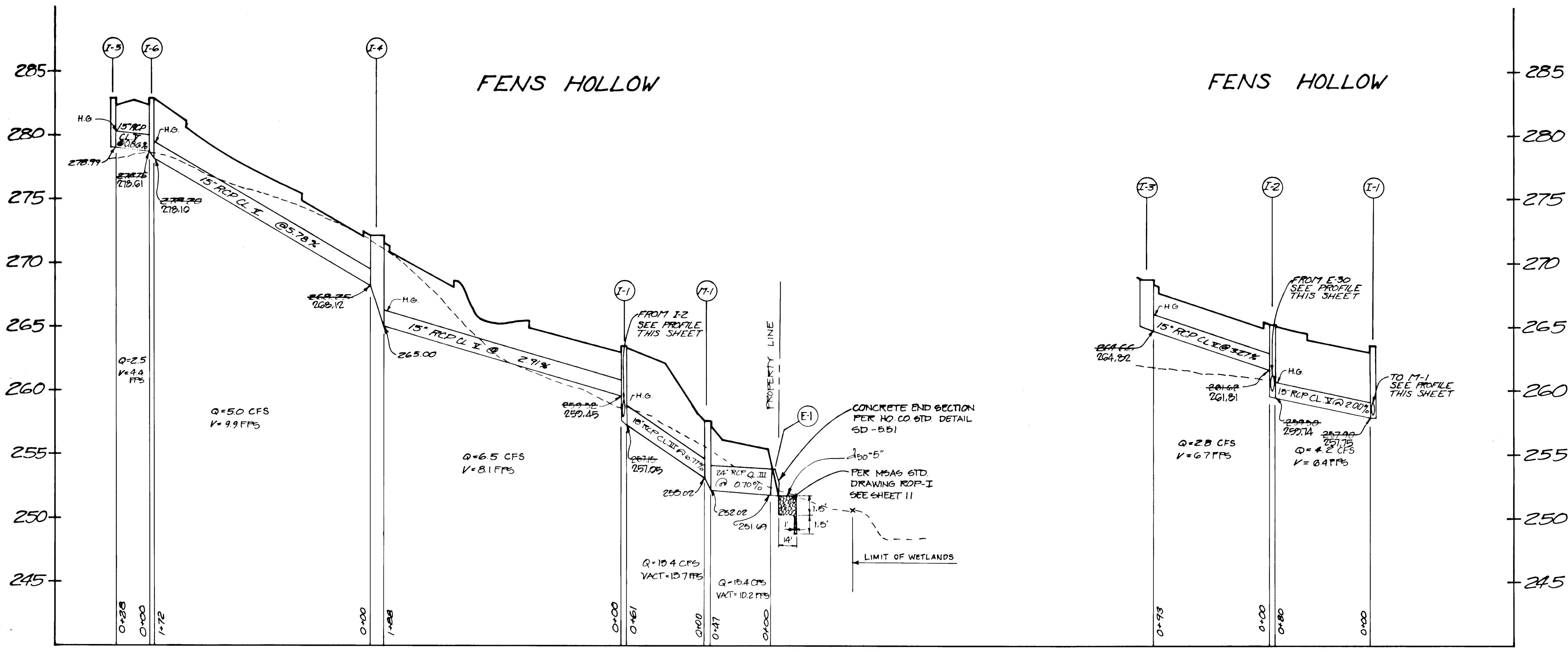
BOWLING BROOK FARMS

Patton Harris Rust and Associates
 A Professional Corporation
 Engineers, Surveyors, Planners and Landscape Architects
 7609 Stonfish Place, Rockville, MD 20855 (301)762-2220

BOWLING BROOK FARMS
 LOTS 3 THRU 7-1
 A RESUBDIVISION OF BOWLING BROOK, LOT 2
 TAX MAP 47 PARCEL 101
 SIXTH ELECTION DISTRICT HOWARD COUNTY, MARYLAND

SURVEY	8/1/87
DESIGN	PAK
DRAWN BY	8/1/87
CHECKED BY	3/8/87
SCALE	AS SHOWN
GL	VERGEE

NO. 1011 F-87-142



APPROVED: DEPARTMENT OF PUBLIC WORKS
 3/1/87
 831-87

1271

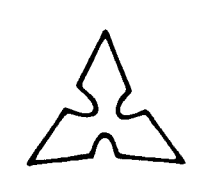
NO.	DESCRIPTION	DATE	APPROVED	DATE
D	AS-BUILT REVISIONS	BP		3/20/87
C	REVISIONS			8/19/87
B	REVISIONS			1/26/87
A	REVISIONS			3/17/87



REVISED

STORM DRAIN PROFILES

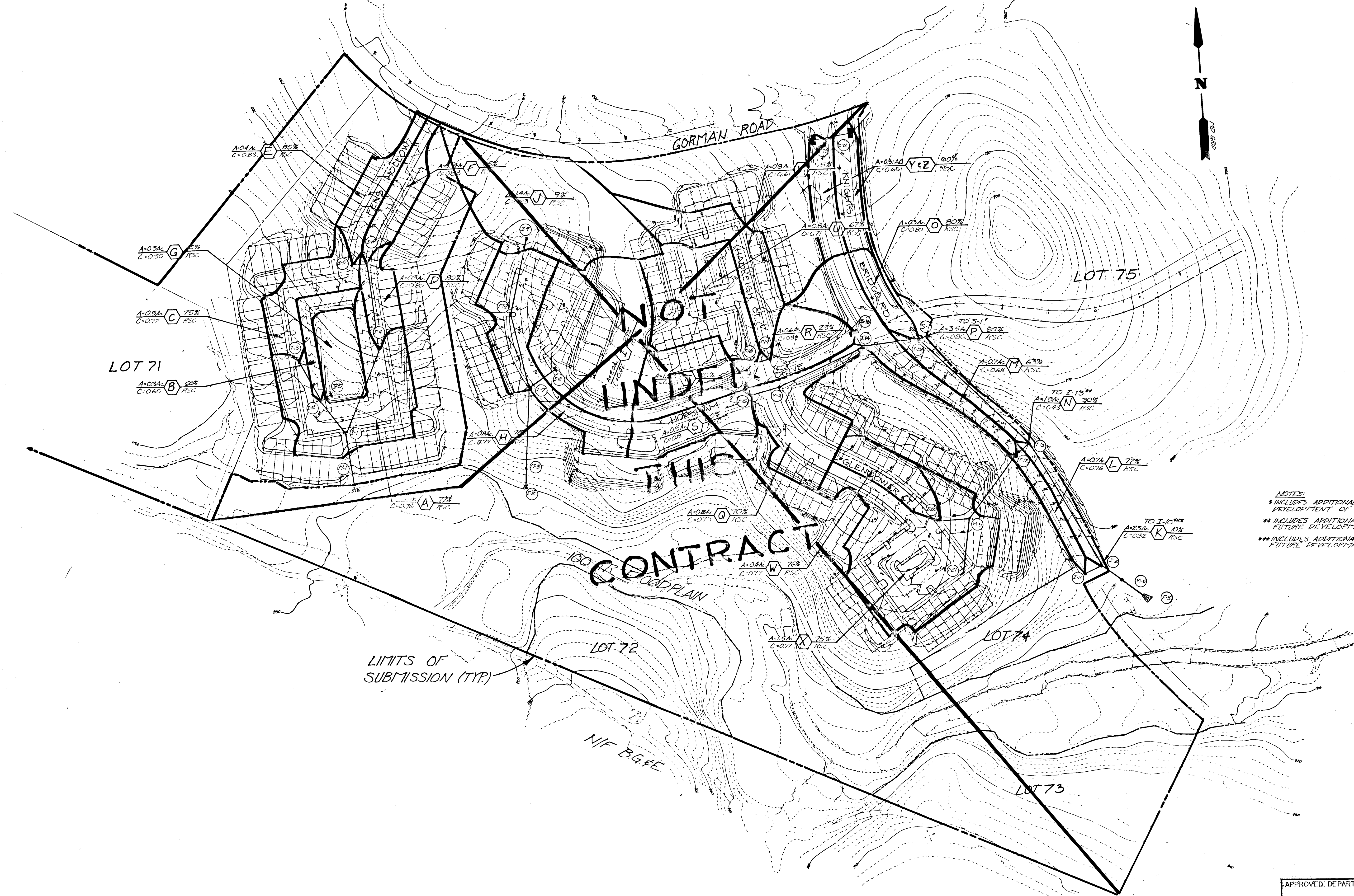
BOWLING BROOK FARMS



Patton Harris Rust and Associates
 A Professional Corporation
 Engineers, Surveyors, Planners and Landscape Architects
 7609 Stony Brook Place, Rockville, MD 20855 (301)762-2220

BOWLING BROOK FARMS
 LOTS 3 THRU 7
 A RESUBDIVISION OF ROLLING BROOKE, LOT 2
 TAX MAP 47 PARCEL M1
 SIXTH ELECTION DISTRICT HOWARD COUNTY, MARYLAND

SURVEY	
DESIGN / MJK	3/1/87
DRAWN / PA	8/11/87
CHECKED / REY	4/1/87
SCALE: HORIZ. 1"=50'	
VERT. 1"=5'	

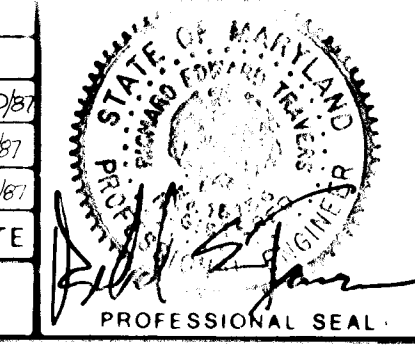


NOTES:
 * INCLUDES ADDITIONAL DRAINAGE AREA FROM FUTURE DEVELOPMENT OF LOT 11
 ** INCLUDES ADDITIONAL DRAINAGE AREA FROM FUTURE DEVELOPMENT OF PARCEL G
 *** INCLUDES ADDITIONAL DRAINAGE AREA FROM FUTURE DEVELOPMENT OF PARCELS G & H

1271

NO.	DESCRIPTION	DATE	APPROVED	DATE
C	REVISED TO SPLN PARCEL 14K			8/19/87
D	REVIEW FOR PERMITS REVIEW COMMENTS			9/26/87
A	CONTRACT APPROVED & LAID OUT INFO			9/27/87

REVISION APPROVED BY: *[Signature]*



DRAINAGE AREA MAP
BOWLING BROOK FARMS

Patton Harris Rust and Associates
 A Professional Corporation
 Engineers, Surveyors, Planners and Landscape Architects
 7609 Standish Place, Rockville, MD 20855 (301)762-2220

APPROVED: DEPARTMENT OF PUBLIC WORKS

[Signature] 3-1-87
 Chief, Bureau of Engineering

APPROVED: HOWARD COUNTY OFFICE OF PLANNING AND ZONING

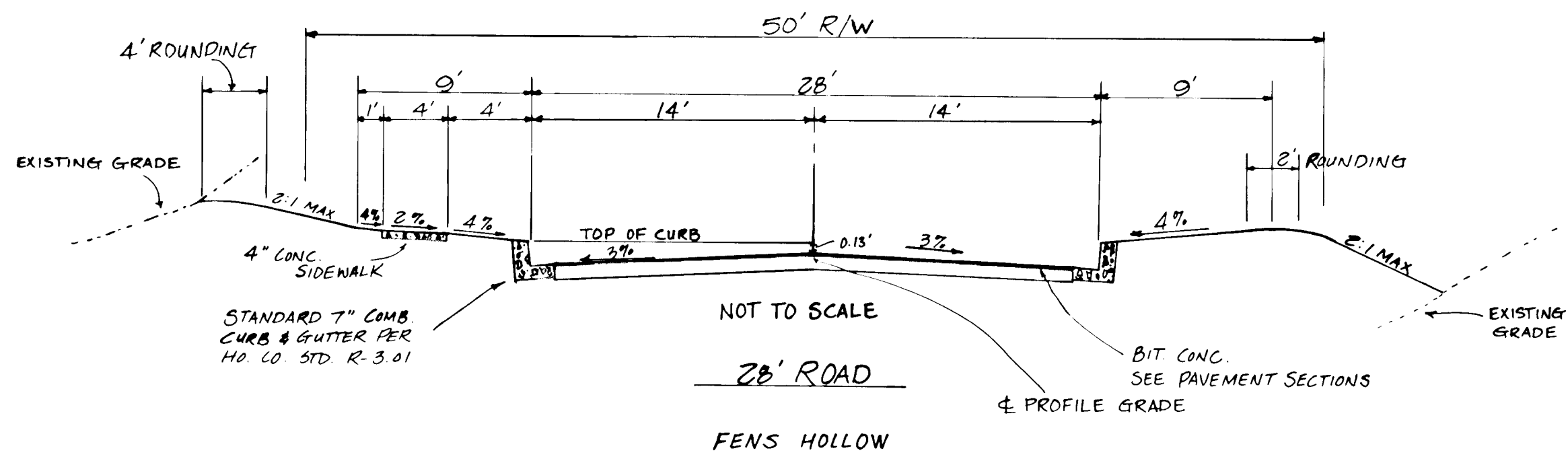
[Signature] 8-27-87
 Chief, Division of Land Development & Zoning Administration

BOWLING BROOK FARMS
 LOTS 3 THRU 71
 A RESUBDIVISION OF BOLLING BROOKE, LOT 2
 TAX MAP 47 PARCEL 141
 SIXTH ELECTION DISTRICT HOWARD COUNTY, MARYLAND

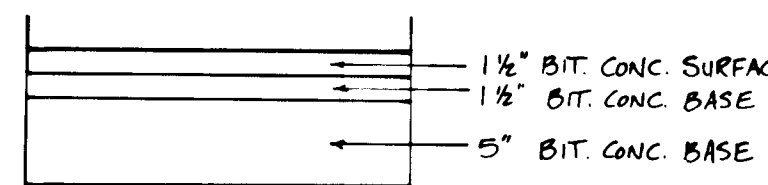
SURVEY	DATE
DESIGN MJC	3/9/87
DRAWN PA, MJC	SHEET
CHECKED MJC	5 OF 9
SCALE 1"=100'	FILE NO
C.I. = 2'	2184-10

F-87-142

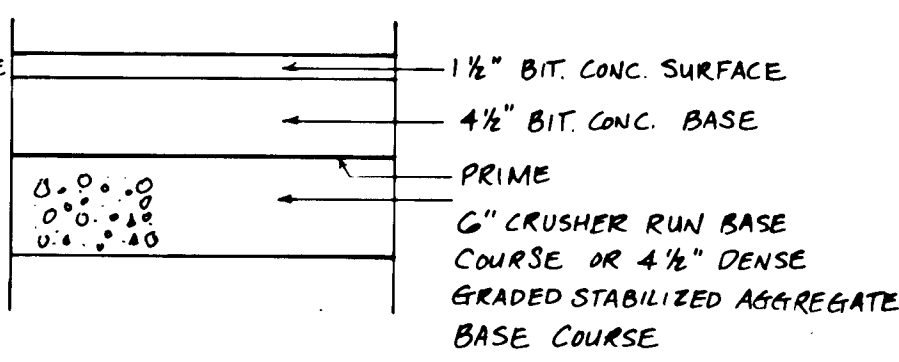
BIT. CONC. PAVEMENT SECTION (HD. CO. STD. R-2.0) P-3



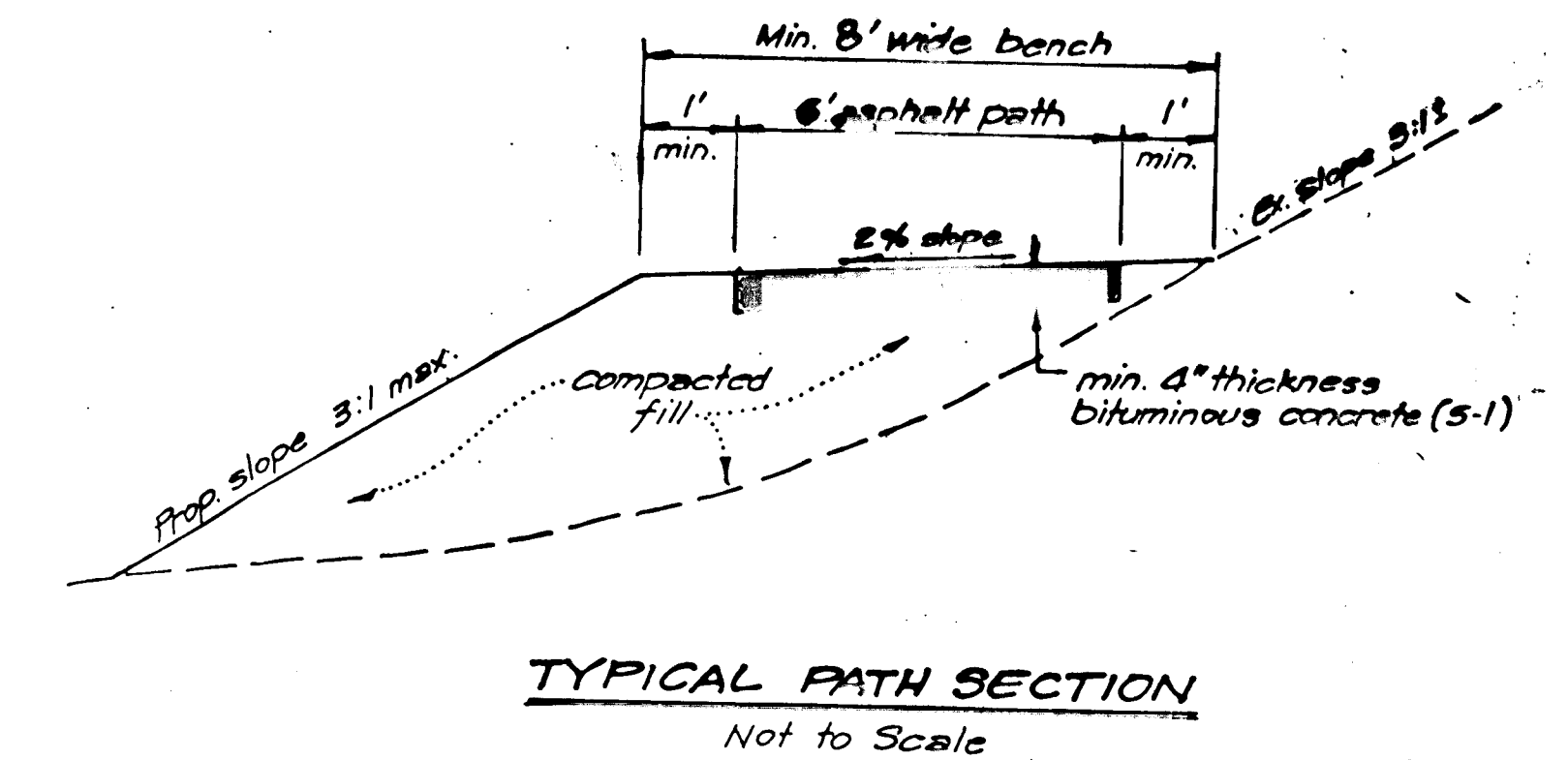
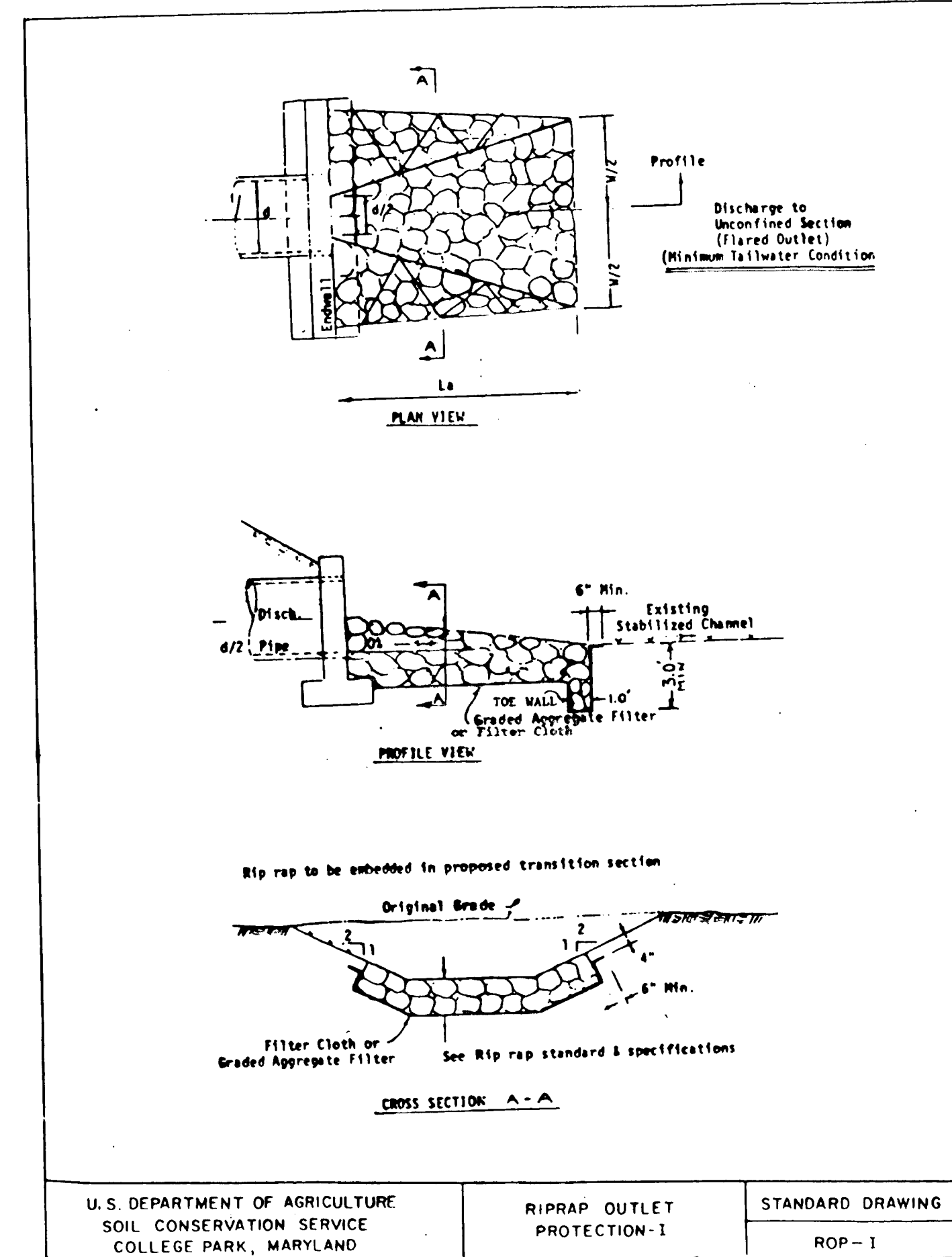
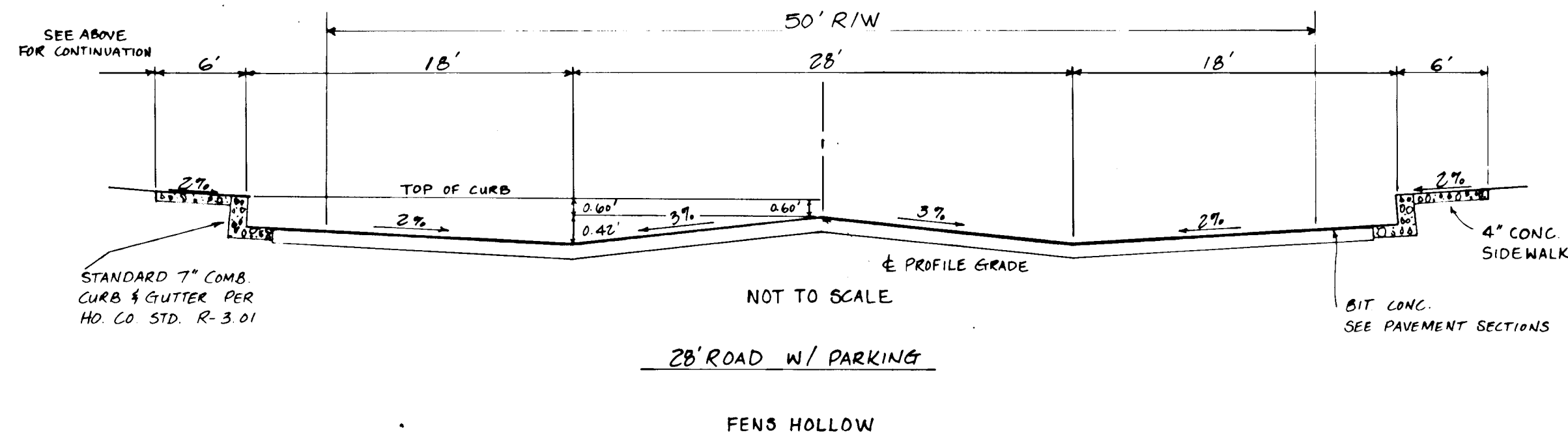
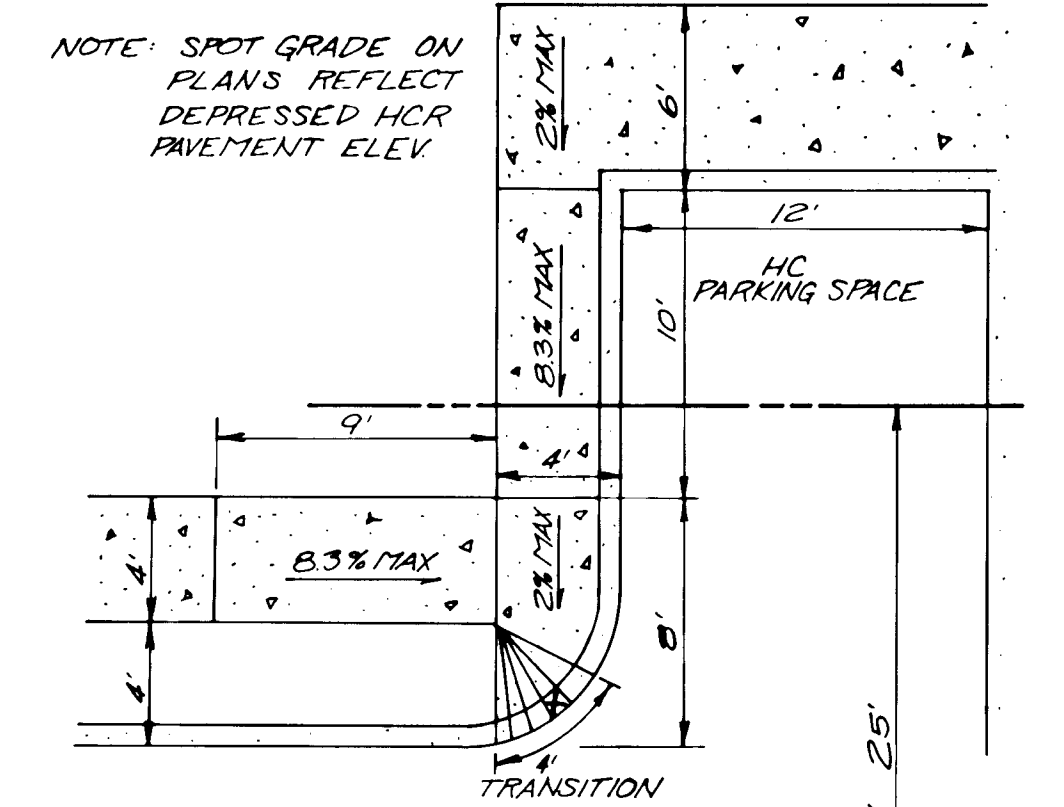
FULL DEPTH BIT. CONC. ALTERNATE



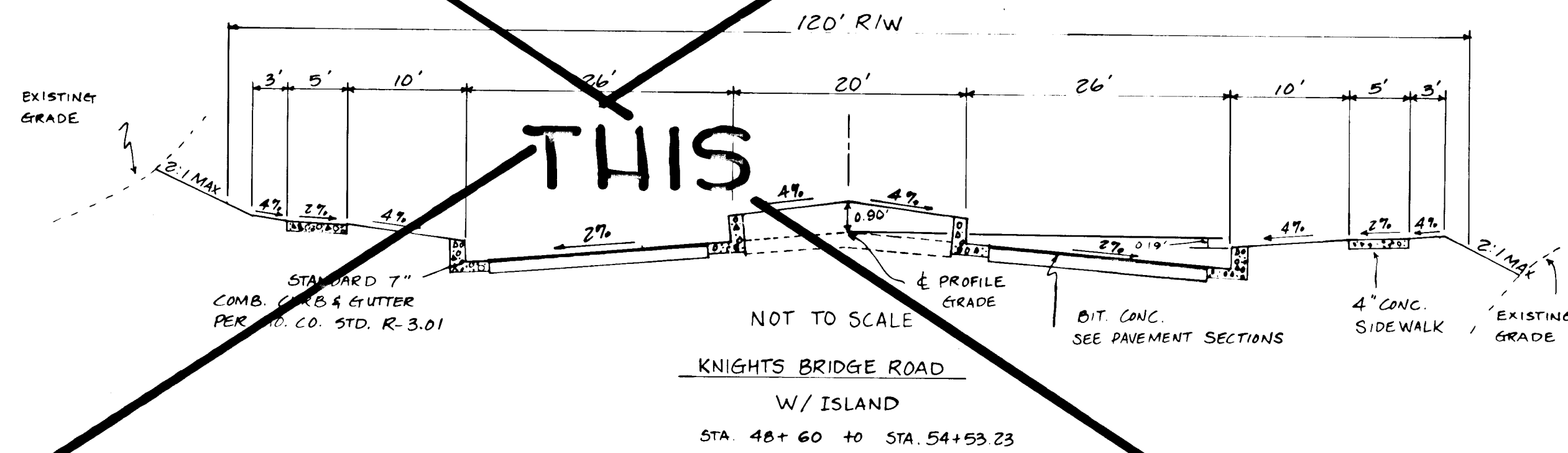
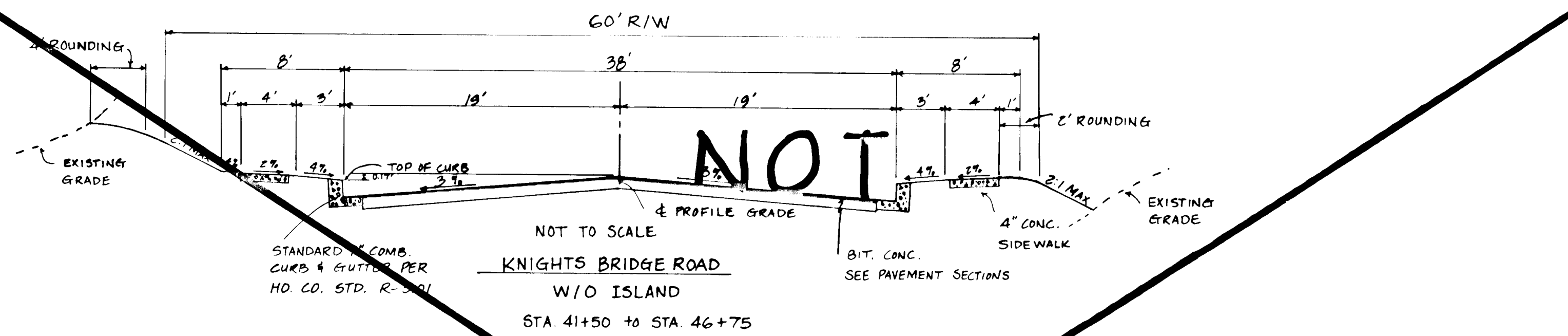
GRANULAR BASE ALTERNATE



NOTE: ONE PAVEMENT SECTION SHALL BE USED THROUGHOUT THE WORK.



NOT UNDER THIS CONTRACT

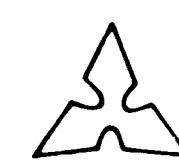


NO.	DESCRIPTION	DATE	APPROVED	DATE



REVISED

PAVING & STORM DRAINAGE SECTIONS & DETAILS



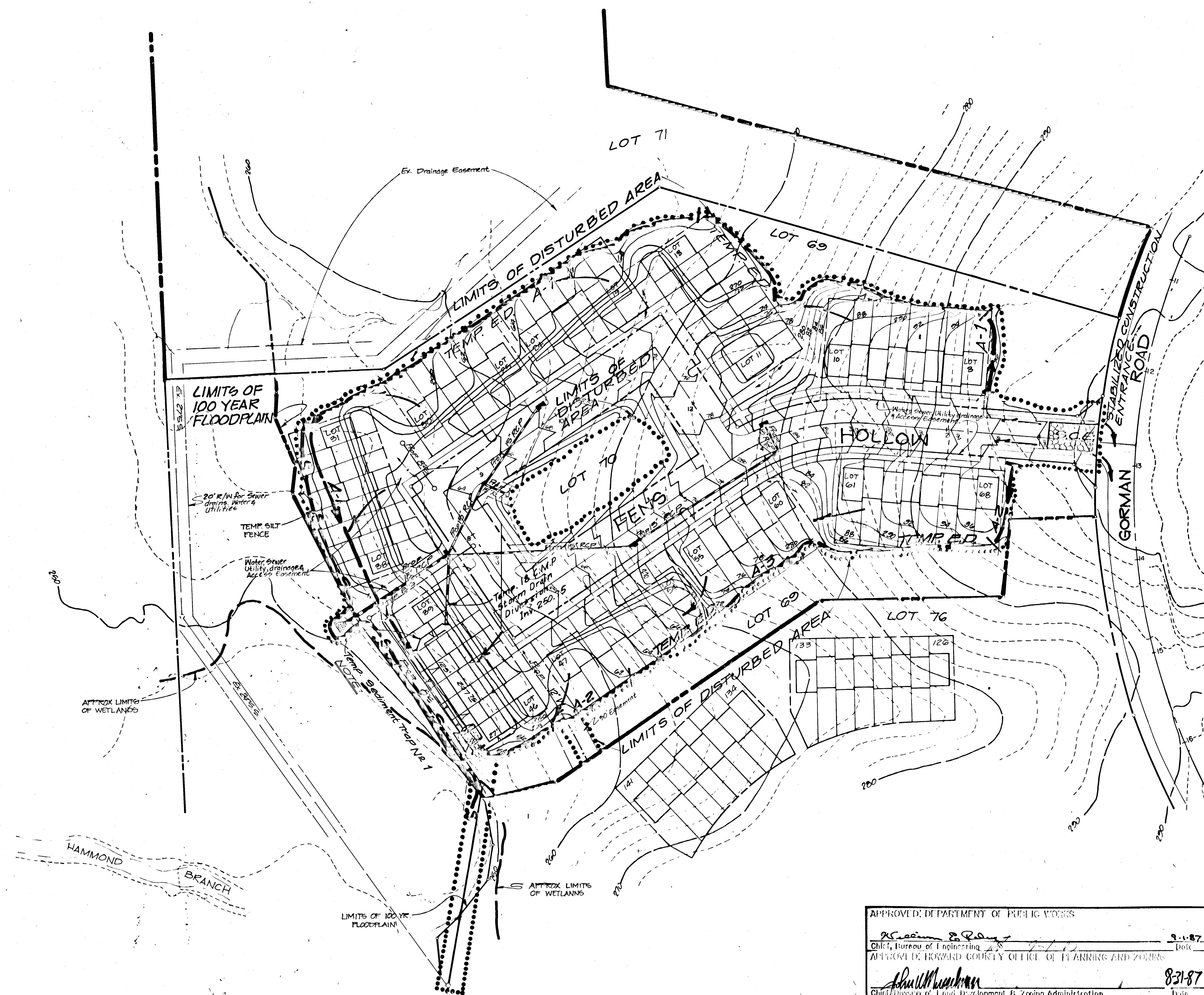
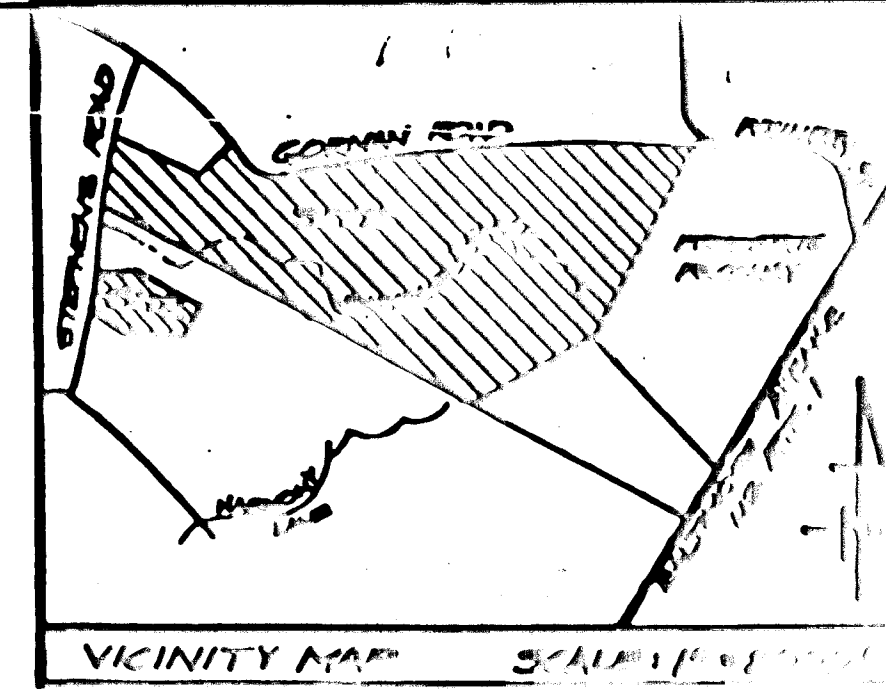
Patton Harris Rust and Associates
A Professional Corporation
Engineers, Surveyors, Planners and Landscape Architects
7609 Standish Place Rockville, Md 20855 (301) 762-2220

BOWLING BROOK FARMS

LOTS 3 THRU 7
A RESUBDIVISION OF BOLLING BROOKE, LOT 2
TAX MAP 47 PARCEL 141
SIXTH ELECTION DISTRICT HOWARD COUNTY, MARYLAND

SURVEY	DATE
DESIGN MJK	3-9-87
DRAWN MJK	8/11/87
CHECKED	6 of 0
SCALE AS SHOWN	1" = 10'

APPROVED BY: [Signature]
[Signature]
[Signature]
8/11/87



THIS PLAN FOR STREET AND UTILITY CONSTRUCTION ONLY

THESE PLANS HAVE BEEN REVIEWED FOR THE HOWARD SOIL CONSERVATION DISTRICT AND MEET TECHNICAL REQUIREMENTS.

John M. N. John 8-26-87
 U.S. Soil Conservation Service Date

THIS PLAN IS APPROVED FOR SOIL CONSERVATION DISTRICT.

APPROVED *Robert J. Zecher* 8-26-87
 Howard S.C.D. Date

APPROVED: DEPARTMENT OF PUBLIC WORKS
K. S. ... 8-1-87
 Chief, Bureau of Engineering Date
 APPROVED: HOWARD COUNTY OFFICE OF PLANNING AND ZONING
Shirley ... 8-31-87
 Chief, Division of Land Development & Zoning Administration Date

PLAN NUMBER _____

1271

NO.	DESCRIPTION	DATE	APPROVED	DATE
C	REVISION TO SHEET			
B	REVISION TO SHEET			
A	REVISION TO SHEET			

EROSION AND SEDIMENT CONTROL PLAN

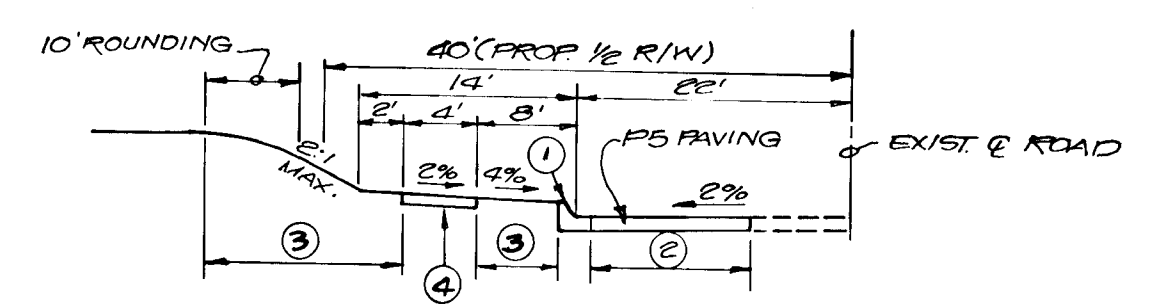
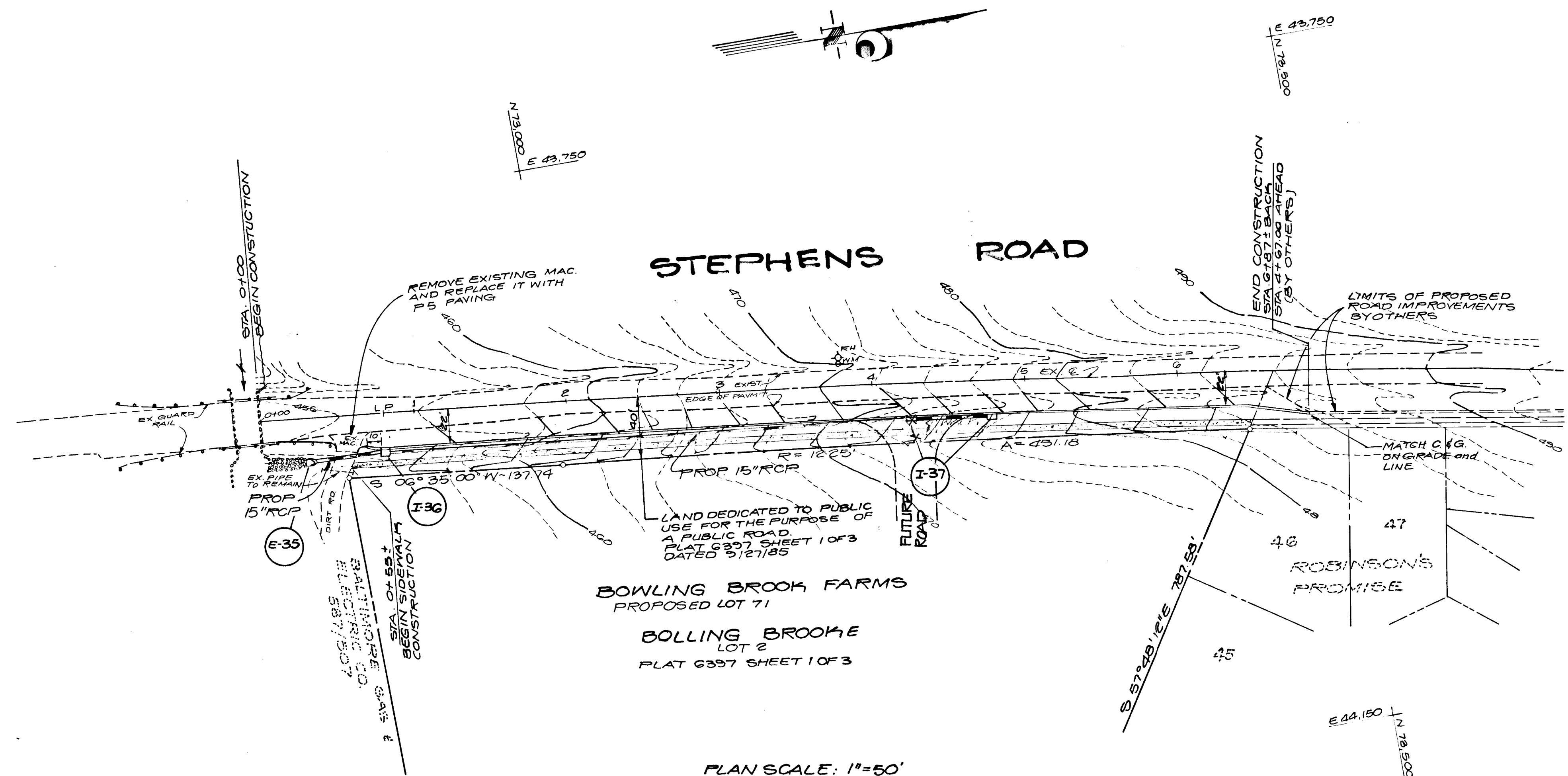
Patton Harris Rust and Associates
 A Professional Corporation
 Engineers, Surveyors, Planners and Landscape Architects
 7609 Standish Place, Rockville Md. 20855 (301) 762-2220

BOWLING BROOK FARMS
 LOTS 3 THRU 71
 A RESUBDIVISION OF BOLLING BROOKE, LOT 2
 TAX MAP 47 PARCEL 141
 SIXTH ELECTION DISTRICT HOWARD COUNTY, MARYLAND

SURVEY P.H.R. & A.	5-20-87
DESIGN JPC	
DRAWN JDW/CSR	8/27/87
CHECKED JPC	8/27/87
SCALE 1" = 50'	
CL 2	

F-87-142

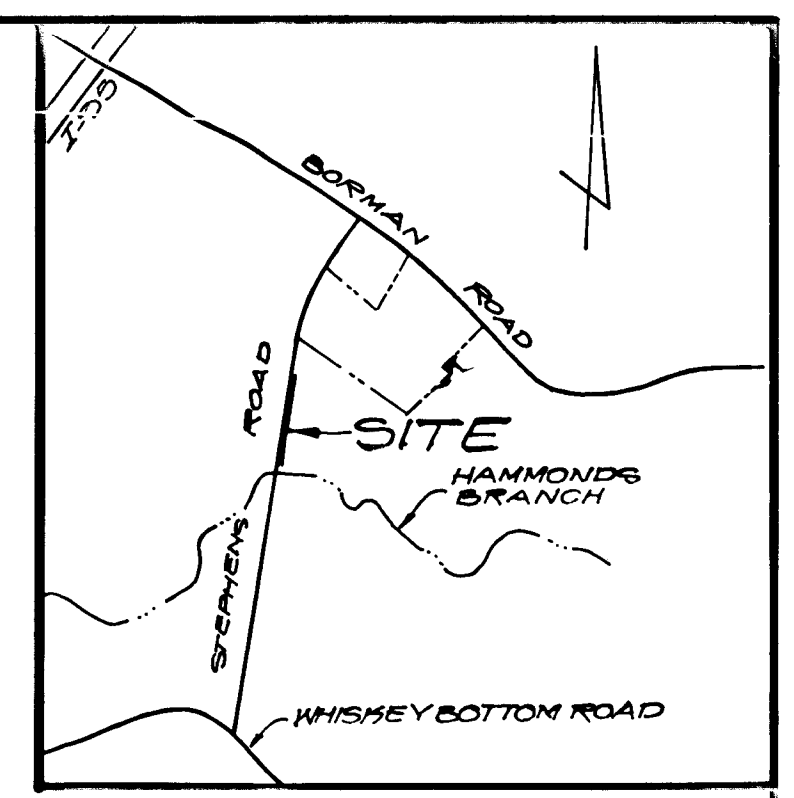
17-1



- ① STANDARD 7" COMB. CURB & GUTTER (STD # R-3.01)
- ② 12" PROPOSED WIDENING SECTION
- ③ INDICATES 2" TOP SOIL SAND & MULCH
- ④ 4" CONC. SIDEWALK (STD # R-3.05)

TYPICAL SECTION: PROPOSED 1/2 R/W
NO SCALE

STEPHENS RD STA 0+8 TO 6+87.18
MAJOR COLLECTOR
DESIGN SPEED = 40 MPH



VICINITY MAP
SCALE: 1/4" = 100'

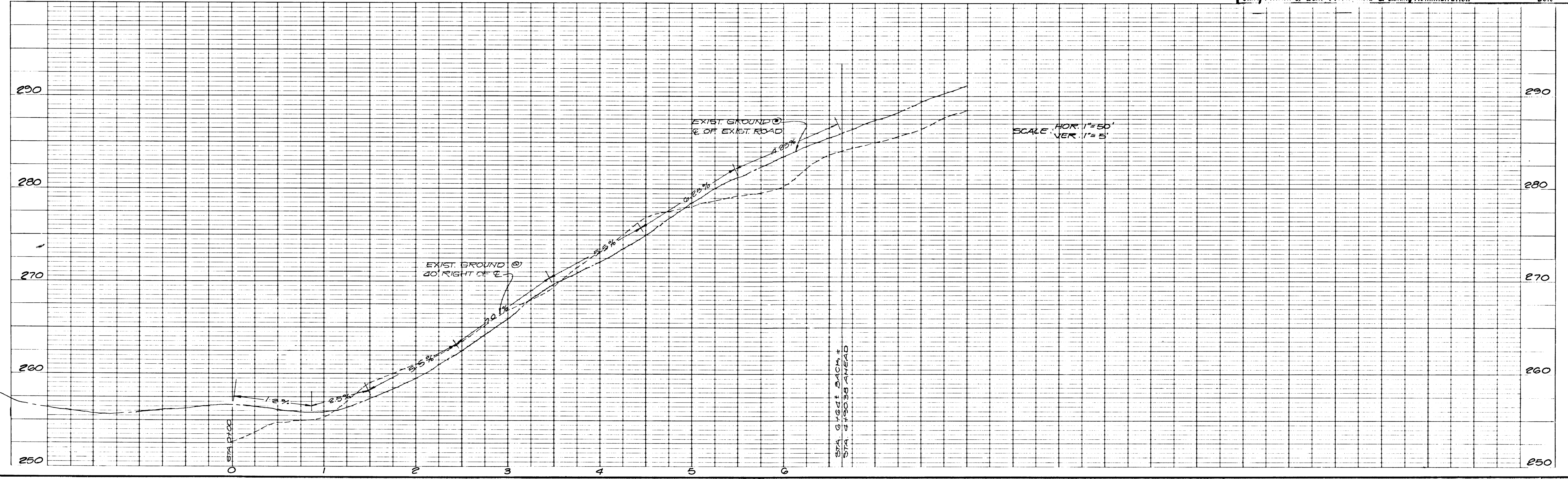
PLAN SCALE: 1" = 50'

APPROVED: DEPARTMENT OF PUBLIC WORKS

John M. ... 9-1-87
Chief, Bureau of Engineering Date

APPROVAL: HOWARD COUNTY OFFICE OF PLANNING AND ZONING

John M. ... P3197
Chief, Division of Land Development & Zoning Administration Date



NO.	DESCRIPTION	DATE	APPROVED	DATE
D	AS-BUILT REVISIONS	BP		8/20/81
C	REVISIONS			8/10/81



REVISED

PAVING and STORM DRAIN PLAN
STEPHENS ROAD
BOWLING BROOK FARMS

Patton Harris Rust and Associates
A Professional Corporation
Engineers, Surveyors, Planners and Landscape Architects
10523 Main Street, Fairfax, Va. / Bridgewater, Va. / Buckhannon, W. Va. / Rockville, Md.

BOWLING BROOK FARMS
LOTS 3 THRU 71
A RESUBDIVISION OF BOLLING BROOKE, LOT 2
TAX MAP 47 PARCEL 141
SIXTH ELECTION DISTRICT HOWARD COUNTY, MARYLAND

SURVEY	DATE
DESIGN E.C.	6/23/87
DRAWN E.C.	SHEET 2 OF 2
CHECKED RT	FILE NO.
SCALE AS SHOWN	

AS-BUILT

F-87-142