

**ENGINEER'S CERTIFICATE**  
 I HEREBY CERTIFY THAT THE PLAN FOR EROSION AND SEDIMENT CONTROL REPRESENTED BY THIS WORKABLE PLAN WAS PREPARED BY ME OR UNDER MY CLOSE PERSONAL SUPERVISION AND THAT IT WAS PREPARED IN ACCORDANCE WITH THE REQUIREMENTS OF THE HOWARD COUNTY CONSERVATION DISTRICT.

CHARLES J. GROVO SR. 4/26/86

NOTE: 1) ANY CONSTRUCTION ON MARYLAND ROUTE 108 SHALL BE DONE IN ACCORDANCE WITH STATE HIGHWAY ADMINISTRATION REQUIREMENTS.  
 2) THE PROPOSED STORM DRAIN SYSTEM WILL BE PUBLIC AND UNDER THE DEVELOPER AGREEMENT AND BONDED.

**DEVELOPER'S CERTIFICATE**  
 I/WE CERTIFY THAT ALL DEVELOPMENT AND CONSTRUCTION WILL BE DONE ACCORDING TO THIS PLAN OF DEVELOPMENT AND PLAN FOR EROSION AND SEDIMENT CONTROL AND THAT ALL RESPONSIBLE PERSONNEL INVOLVED IN THE CONSTRUCTION PROJECT WILL HAVE A CERTIFICATE OF ATTENDANCE AT A DEPARTMENT OF NATURAL RESOURCES APPROVED TRAINING PROGRAM FOR THE CONTROL OF SEDIMENT AND EROSION BEFORE BEGINNING THE PROJECT. I ALSO AUTHORIZE PERIODIC ONSITE INSPECTION BY THE HOWARD COUNTY SOIL CONSERVATION DISTRICT OR THEIR AUTHORIZED AGENTS AS ARE DEEMED NECESSARY.

W. Ballou 4-28-86  
 HOWARD COUNTY LAND SERVICES, INC. DATE

REVIEWED FOR HOWARD COUNTY SOIL CONSERVATION DISTRICT AND MEETS TECHNICAL REQUIREMENTS.  
 U.S. SOIL CONSERVATION SERVICE DATE

THIS DEVELOPMENT PLAN IS APPROVED FOR EROSION AND SEDIMENT CONTROL BY THE HOWARD COUNTY CONSERVATION DISTRICT.  
 Stephen H. 7/19/86

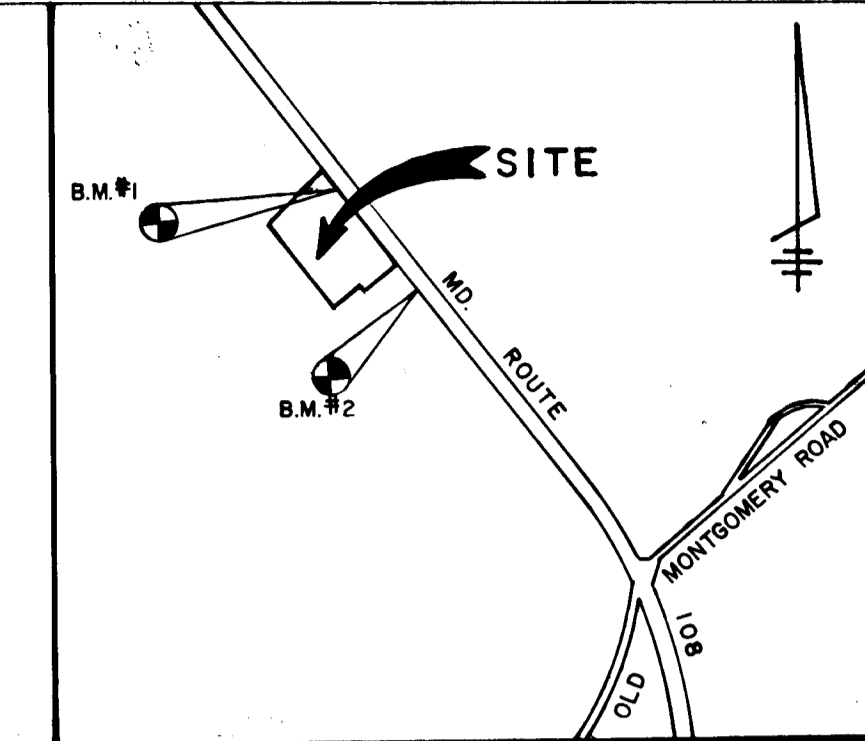
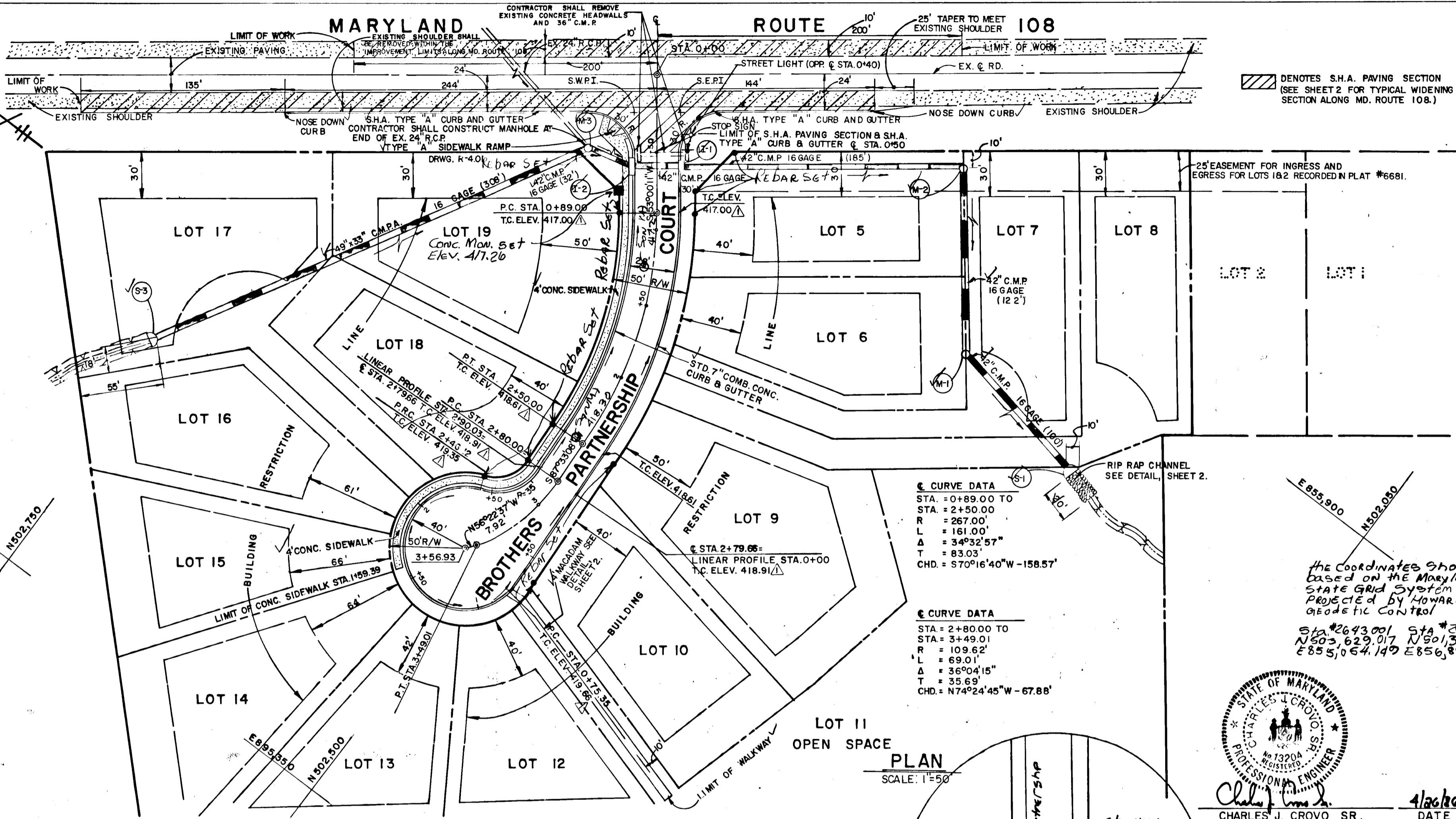
- GENERAL NOTES**
- 1) ALL WORK SHALL BE DONE IN ACCORDANCE WITH HOWARD COUNTY STANDARDS, SPECIFICATIONS AND DETAILS FOR CONSTRUCTION.
  - 2) ALL UTILITY COMPANIES MUST BE NOTIFIED 24 HRS. IN ADVANCE OF ANY CONSTRUCTION.
  - 3) STORM DRAINAGE TRENCHES WITHIN ROAD RIGHTS-OF-WAYS SHALL BE BACKFILLED AND COMPACTED IN ACCORDANCE WITH HOWARD COUNTY ROAD CODE.
  - 4) ANY DAMAGE TO PUBLIC RIGHTS-OF-WAYS OR PAVING WILL BE CORRECTED AT THE CONTRACTORS EXPENSE.
  - 5) CONTRACTOR TO NOTIFY THE HOWARD COUNTY INSPECTION AND SURVEY DIVISION AT LEAST 3 DAYS BEFORE STARTING WORK SHOWN ON THESE DRAWINGS-TELEPHONE -792-7272.
  - 6) TRAFFIC CONTROL DEVICES SHALL BE INSTALLED IN ACCORDANCE WITH THE MANUAL OF UNIFORM TRAFFIC CONTROL DEVICES, 1978 EDITION.

APPROVED DEPARTMENT OF PUBLIC WORKS  
 William E. 7-30-86  
 CHIEF, BUREAU OF ENGINEERING DATE

APPROVED OFFICE OF PLANNING AND ZONING  
 John M. 7-9-86  
 AND ZONING ADMINISTRATION DATE

NOTE: STREET LIGHT SHALL BE ON A 30 FOOT HIGH BRONZE ALUMINUM OR GALVANIZED STEEL BURIAL POST WITH (1) ONE 250 WATT Hg. FIXTURE.

D.A.N. NO.	REVISION	DATE
1	REVISE ROAD GRADE TO ACCOMMODATE LOTS 15-19	2/10/87



**VICINITY MAP**  
 SCALE: 1"=1200'

**BENCH MARKS**

B.M.#1 ELEV. 420.23  
 ROADSIDE BONNET BOLT OF FIRE HYDRANT 235' NORTHWEST FROM INTERSECTION OF MD. ROUTE 108 AND BROTHERS PARTNERSHIP COURT.

B.M.#2 ELEV. 404.80  
 ROADSIDE BONNET BOLT OF FIRE HYDRANT 565' NORTHWEST FROM INTERSECTION OF MD. ROUTE 108 AND BROTHERS PARTNERSHIP COURT.  
 (SEE VICINITY MAP).

**PETER HARMON'S ACRES**  
 A RESUBDIVISION OF LOT 3  
 LOTS 5-19  
 6TH ELECTION DISTRICT  
 HOWARD COUNTY, MARYLAND

**BROTHERS PARTNERSHIP COURT**  
 PLAN AND PROFILE

OWNER AND DEVELOPER  
 LOIS MAISEL C/O HOWARD CO. LAND SERVICES, INC. 10176 BALTIMORE NATIONAL PIKE SUITE 202 ELLICOTT CITY, MARYLAND 21043

HOWARD COUNTY LAND SERVICES, INC. 10176 BALTIMORE NATIONAL PIKE SUITE 202 ELLICOTT CITY, MARYLAND 21043

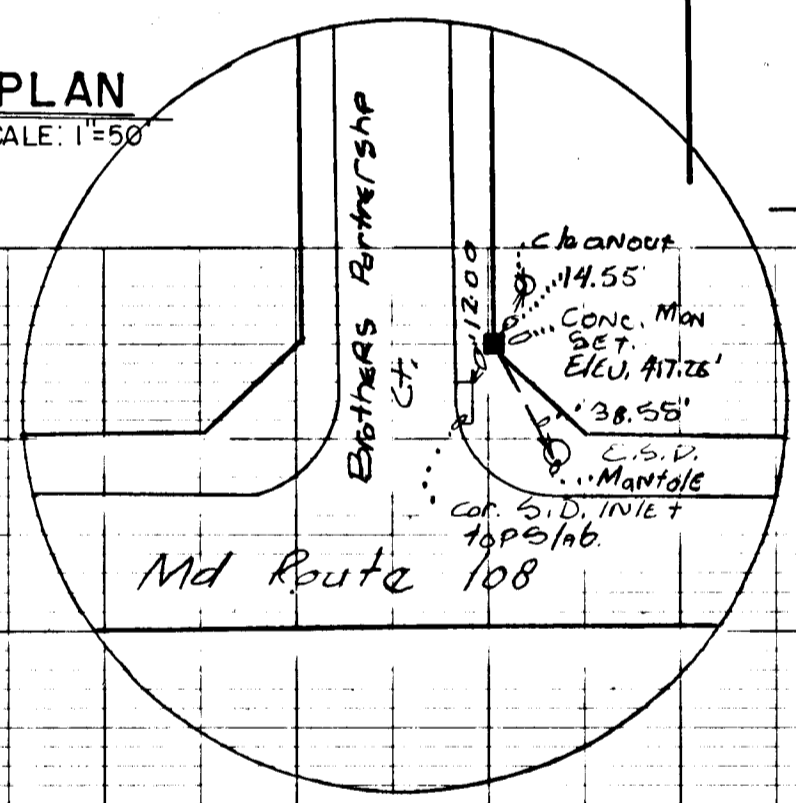
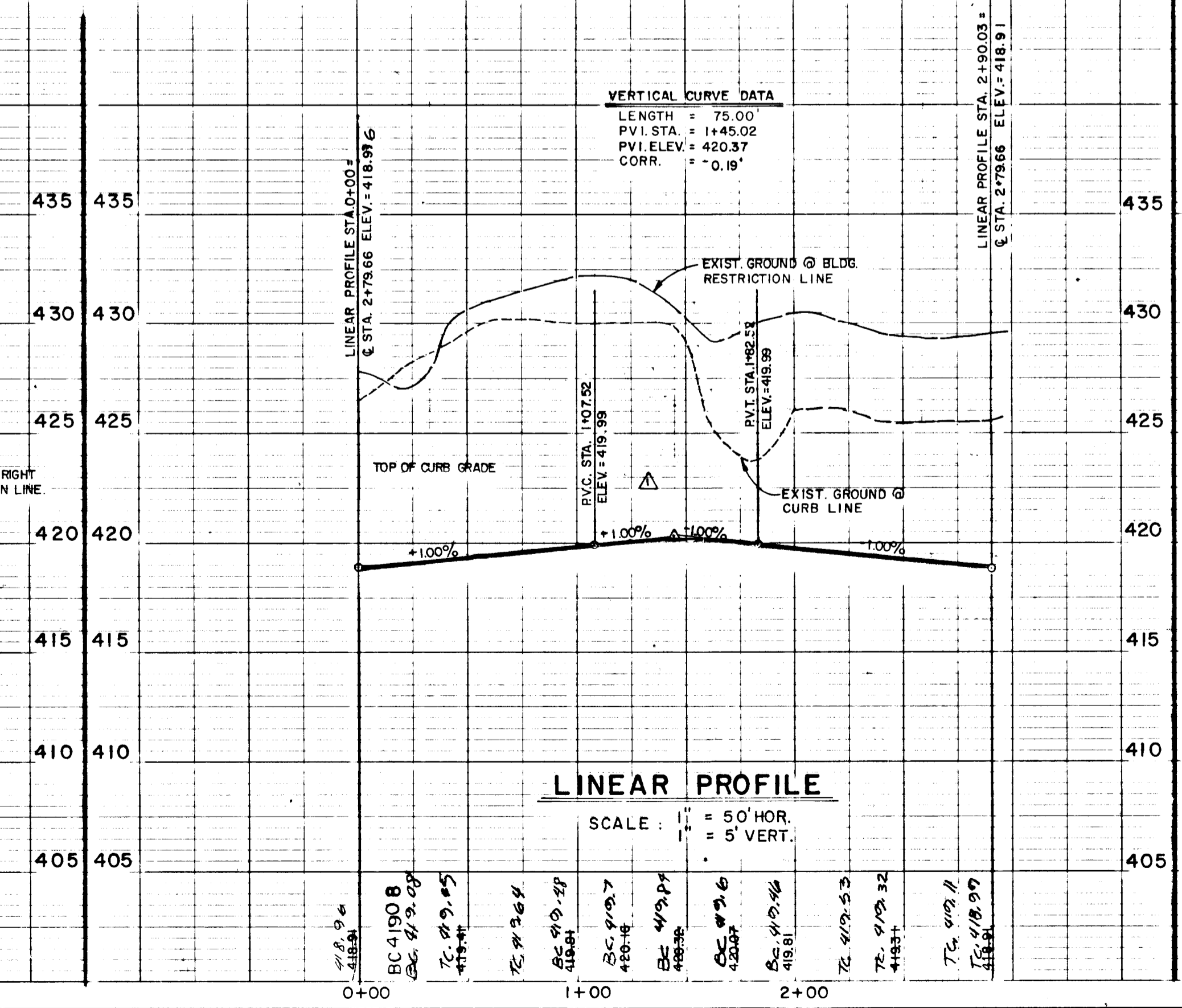
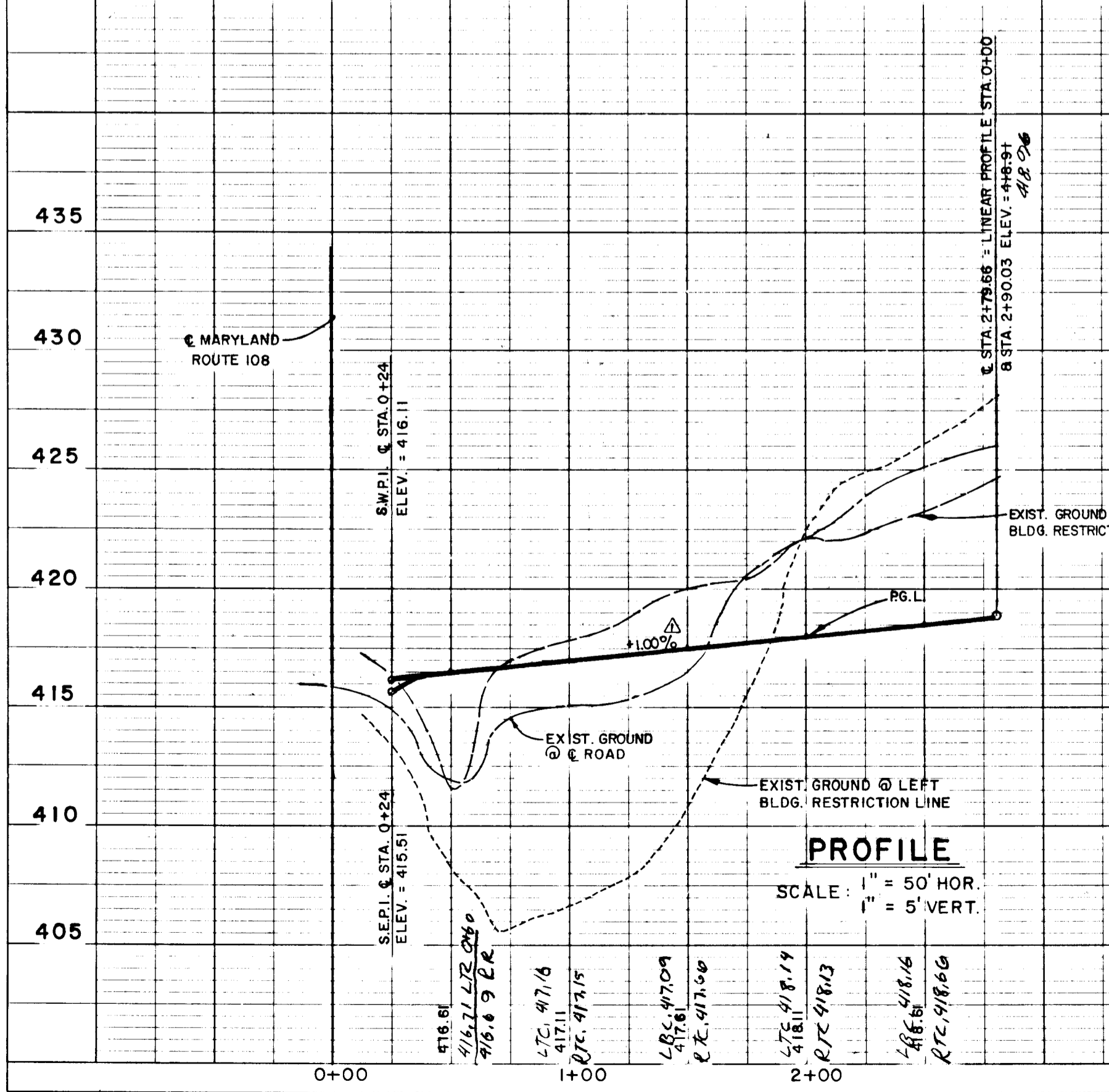
SCALE AS SHOWN DATE APR. 21, 1986 DWG. NO. 1 OF 3

DES. D. VANDE RYT DRN. A. STEINBERG CHK. C. GROVO

FISHER, COLLINS AND CARTER, INC.  
 CIVIL ENGINEERS AND LAND SURVEYORS  
 8388 COURT AVE. ELLICOTT CITY, MARYLAND 21043

PROFESSIONAL ENGINEER  
 No. 13204  
 REGISTERED  
 CHARLES J. GROVO SR. 4/26/86

**BROTHERS PARTNERSHIP COURT**

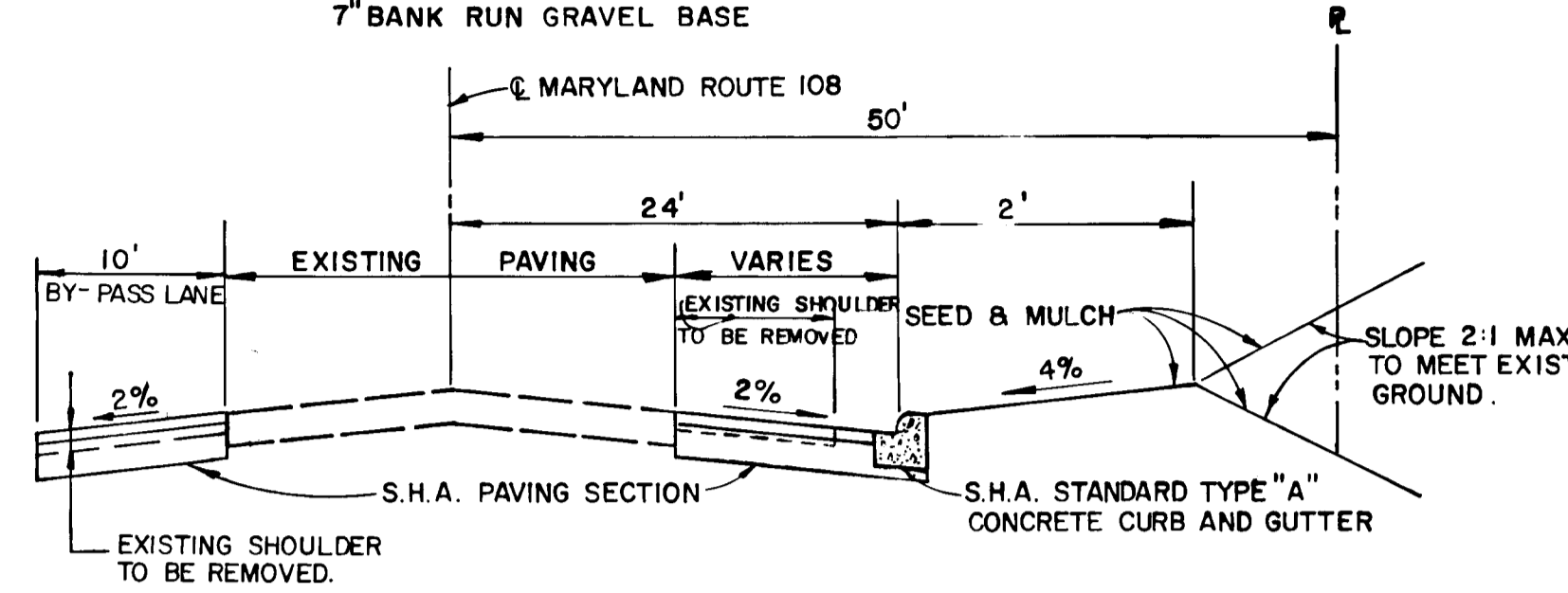


#1206

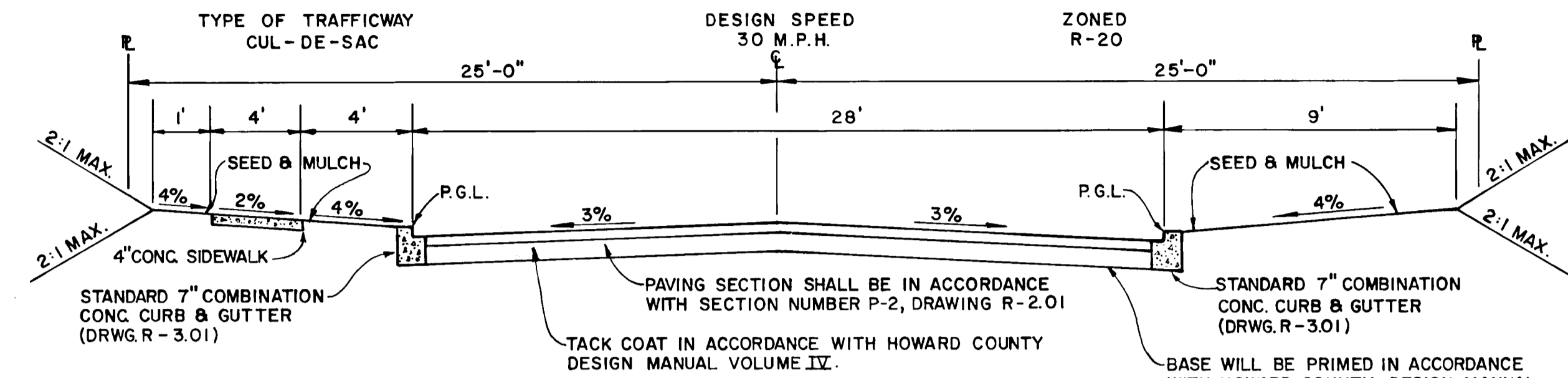
STRUCTURE SCHEDULE						
NO.	TYPE	INVERT IN	INVERT OUT	TOP ELEV.	ROAD STATION	REMARKS
I-1	A-5W/DEFLECTORS	405.94	405.99	416.71	0+60	BROTHERS PARTNERSHIP CT. DWG. S.D. 4.01 & S.D. 4.83
I-2	A-10	407.39	407.44	418.71	0+60	BROTHERS PARTNERSHIP CT. DWG. S.D. 4.02
MH-1	SHALLOW MANHOLE	400.91	400.66	406.41		G. 5.05
MH-2	SHALLOW MANHOLE	404.56	404.31	410.06		G. 5.05
MH-3	STANDARD MANHOLE	408.33	407.58	417.59		G. 5.03
S-1	STD. METAL END SECTION		398.36	401.86		S.D. 5.61
S-2	EX. CONC. HEADWALL	414.07		416.07		
S-3	STD. METAL END SECTION	418.36		418.71		S.D. 5.63

RIP RAP CHANNEL DESIGN DATA												
STRUCTURE	A	P	R	R2/3	S	S1/2	n	Q	V	D	W	b
S-1	13.56'	14.96'	.9065	.9363	1.00%	.100	.04	47.19 c.f.s.	3.43 f.p.s.	1.11	10'	6' 9" 14"

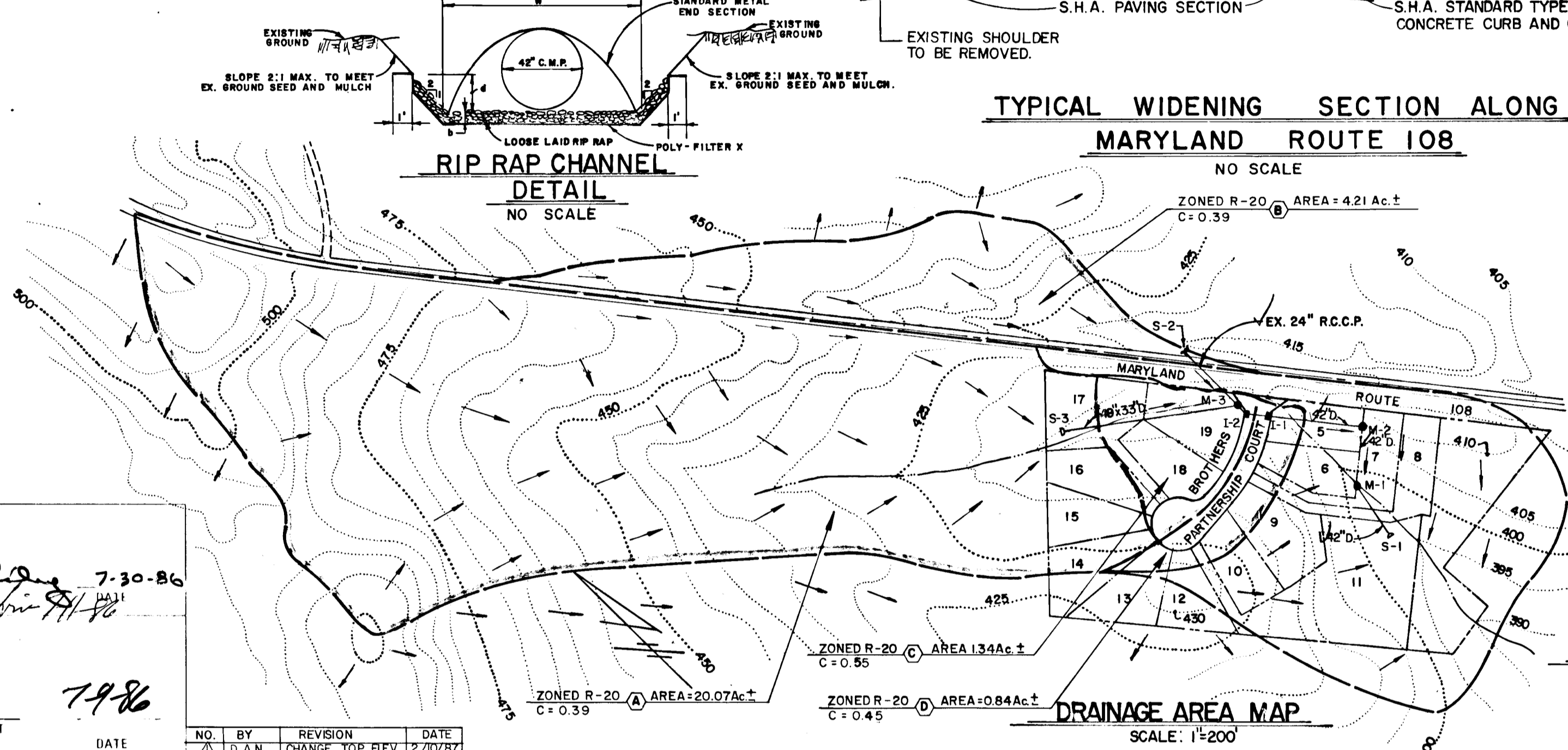
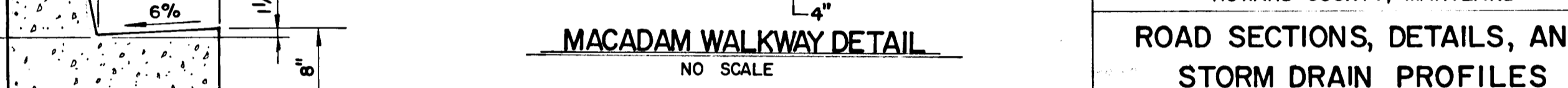
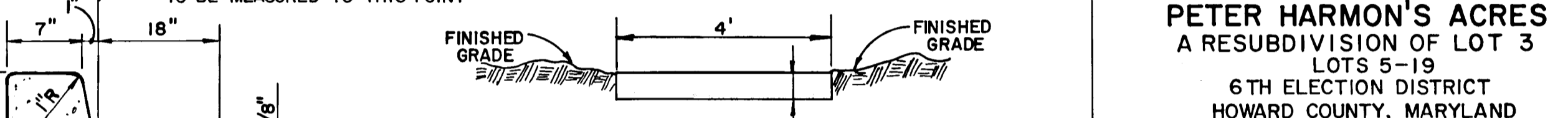
S.H.A. PAVING SECTION SHALL BE:  
 3" (NOMINAL) BITUMINOUS CONCRETE SURFACE (2-1 1/2" COURSES) ON:  
 4" (NOMINAL) BITUMINOUS CONCRETE BASE ON ONE OF THE FOLLOWING:  
 6" GRADED AGGREGATE BASE, OR  
 7" BANK RUN GRAVEL BASE



BY	NO.	REVISION	DATE
LAN	2	ADD P-2 CURB & GUTTER RUN SECTION	10/2/86



NOTE: ALL MATERIALS AND CONSTRUCTION SHALL BE IN ACCORDANCE WITH HOWARD COUNTY DESIGN MANUAL VOLUME IX STANDARD SPECIFICATIONS AND DETAILS FOR CONSTRUCTION.



APPROVED DEPARTMENT OF PUBLIC WORKS  
 7-30-86  
 CHIEF, BUREAU OF ENGINEERING

APPROVED OFFICE OF PLANNING AND ZONING  
 7-9-86  
 AND ZONING ADMINISTRATION

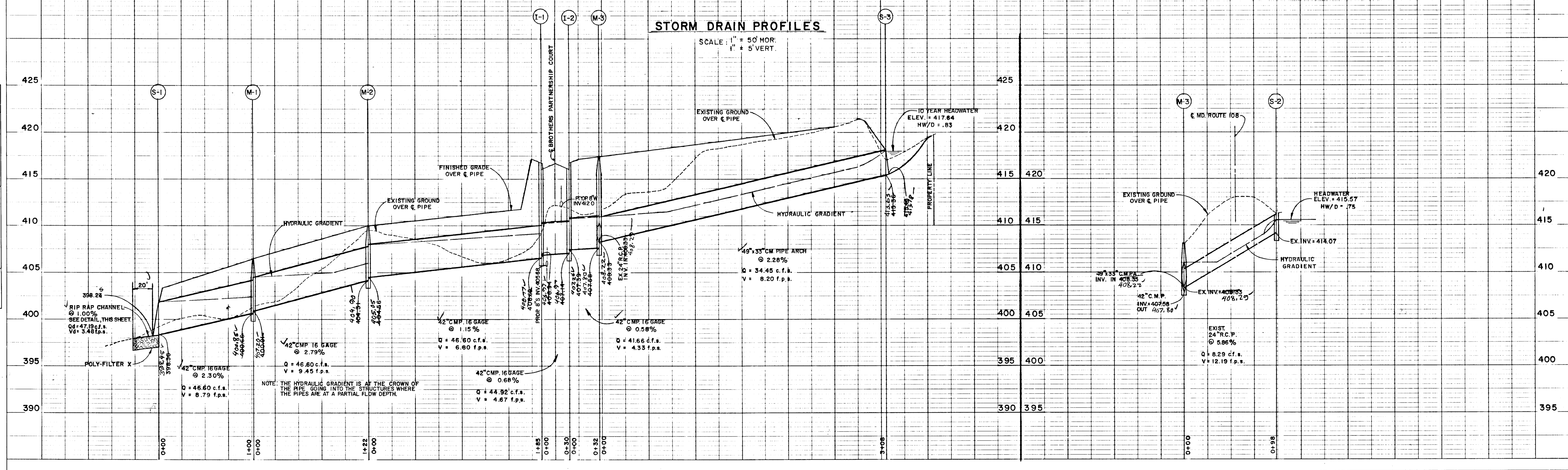
PETER HARMON'S ACRES  
 A RESUBDIVISION OF LOT 3  
 LOTS 5-19  
 6TH ELECTION DISTRICT  
 HOWARD COUNTY, MARYLAND

OWNER AND DEVELOPER  
 LOIS MAISEL C/O HOWARD CO. LAND SERVICES, INC.  
 10176 BALTIMORE NATIONAL PIKE SUITE 202  
 ELLICOTT CITY, MARYLAND 21043

DESIGNER  
 FISHER, COLLINS AND CARTER, INC.  
 CIVIL ENGINEERS AND LAND SURVEYORS  
 8388 COURT AVE. ELLICOTT CITY, MARYLAND 21043

STORM DRAIN PROFILES

SCALE: 1" = 50' HOR.  
 1" = 5' VERT.



4/206

