

**INDEX FOR SHEETS**

Sht No.	Description
1 of 3	Drainage Area Map
2 of 3	Storm Drain & Paving Plans, Wynfield Rd. 38+15 to 38+18
3 of 3	Storm Drain & Paving Plans, Wynfield Rd. 38+18 to 44+77
4 of 3	Storm Drain & Paving Plans, Woodridge Ct. 0+00 to 3+54
5 of 3	Storm Drain & Paving Profiles
6 of 3	Soil Erosion & Sediment Control Plans, Wynfield Rd. 38+15 to 38+18
7 of 3	Soil Erosion & Sediment Control Plans, Wynfield Rd. 38+18 to 44+77
8 of 3	Soil Erosion & Sediment Control Plans, Woodridge Ct. 0+00 to 3+54
9 of 3	Soil Erosion & Sediment Control Std. Detail Sht.

- GENERAL NOTES:**
- All work shall be done in accordance with Howard County Standards, Specifications and Details for Construction.
  - All utility companies must be notified 24 hours in advance of any construction.
  - Wynfield Road is designed for 30 MPH. speed and Woodridge Court is designed for 30 MPH. speed.
  - All inlets shall be Howard County Standard unless otherwise shown.
  - Storm Drain trenches within road right-of-ways shall be backfilled and compacted in accordance with Howard County Standards, Specification and Details for Construction.
  - Any damage to Public Right-of-ways or paving will be corrected at the developer's expense.
  - Approximate locations of all existing utilities are shown. The contractor shall take all necessary precautions to protect existing utilities and to maintain uninterrupted service. Any damage incurred due to contractor's operations shall be repaired immediately at the contractor's expense.
  - The contractor shall test pit existing utilities where directed by the Engineer a minimum of two weeks in advance of any construction.
  - Contractor to notify the Howard County Department of Inspectors and Permits at least 3 days before starting work shown on these drawings. Telephone 992-2436.
  - Compaction to be 95% under all affects and storm drains in fill.
  - Trench bedding shall be "Trench in Earth". See H.O. Co. Std. Details G.2.D1.

REV. NO.	DATE	DESCRIPTION
1	1-9-85	SHT 2 & 5
2	6-13-85	CHANGE PAVING SECTION
3	11-19-84	DELIC STRUCTURE E-10

APPROVED: OFFICE OF PLANNING & ZONING  
*John W. Hershman* 9-6-84  
 CHIEF, DIVISION OF LAND DEVELOPMENT DATE AND ZONING ADMINISTRATION

APPROVED DEPARTMENT OF PUBLIC WORKS  
*James R. ...* 9-10-84  
 CHIEF, BUREAU OF ENGINEERING DATE

HORIZONTAL CONTROL- Md. STATE PLANE COORDINATE SYSTEM  
 VERTICAL CONTROL- 1929 GENERAL ADJUSTMENT DATUM  
 HOWARD COUNTY TRAVERSE STATION 3497001-12 AND 3497002-12

**WYNFIELD SECT 3  
 STORM DRAINAGE AREA MAP**  
 193 AC<sup>±</sup> PARCEL ROUTE 144  
 PARCEL NO 85

DISTRICT 3, SCALE 1"=200' HO CO. MD. FEB 14, 1984

BATTA ASSOC INC.,  
 622 HUNGERFORD DR SUITE #24  
 ROCKVILLE MD 20850  
 (301) 340-7702

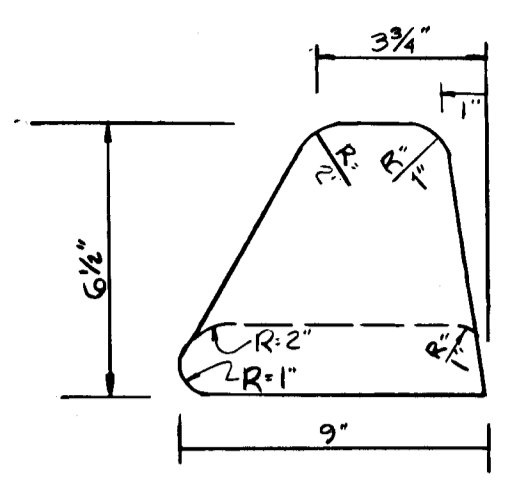
OWNER: DONALD HOFFMAN ET AL  
 C/O THE DEVELOPMENT GROUP  
 SUITE 206  
 2450 FORT MEADE ROAD LAUREL, MD 20707

SHEET 1 OF 3

#899

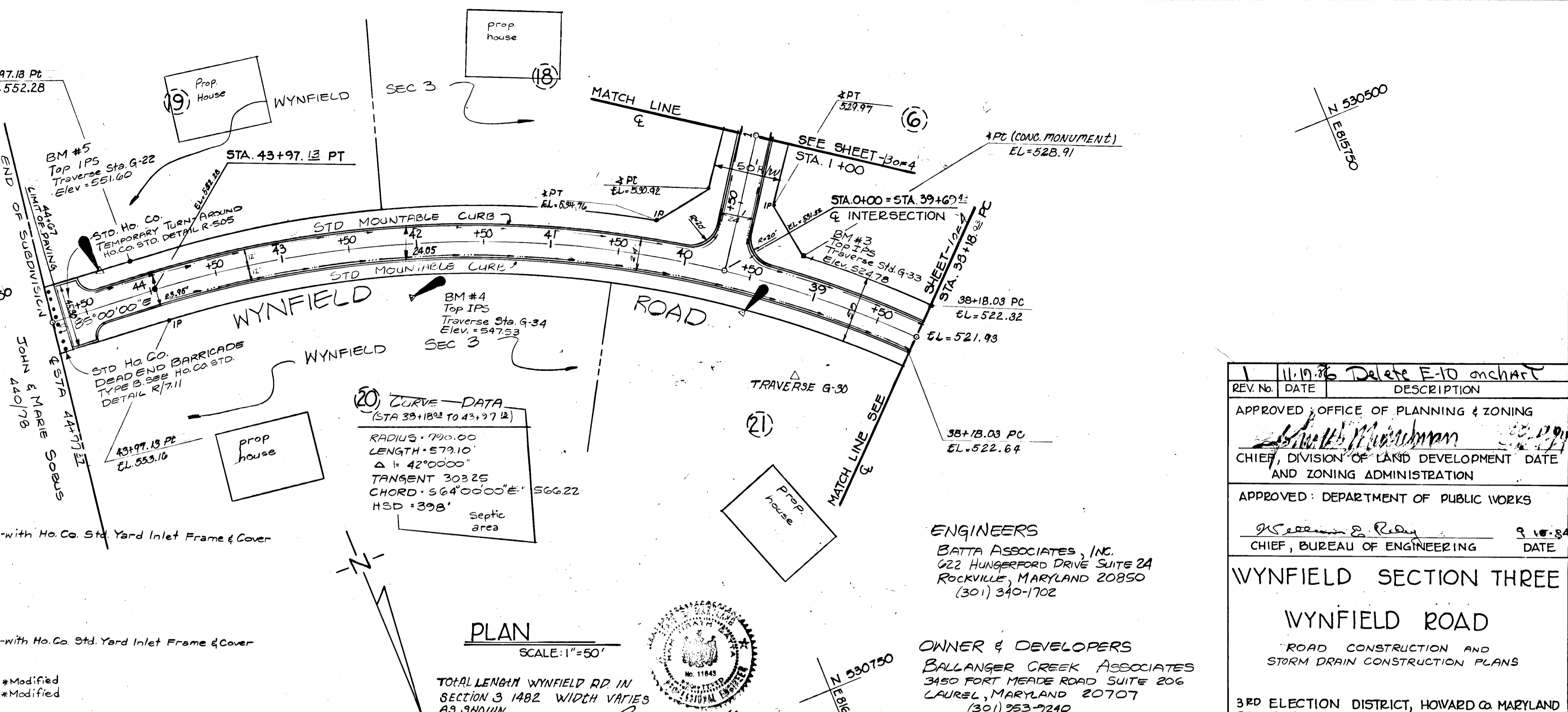
3/10/84





**MOUNTABLE CURB**  
 NO SCALE  
 SEE HOWARD COUNTY STANDARD SPECIFICATIONS AND DETAILS FOR CONSTRUCTION. VOLUME II STD. R-303. FOR ALL CURBS & GUTTER EXCEPT CUL-DE-SAC.

No.	TYPE	STA	TOP ELEV.	INVERT	REMARKS
I-1	Double Type 'S' Comb Inlet	7136.14	514.53		Ho. Co. Std. Vol. IV SD M-34 VALLEY BOX INC. SD'S COMB.
I-2	Double Type 'S' Comb Inlet	7142	520.63		"
E-4	Std. End Section, Alum. Pipe	7134	512.16		SEE HO. CO. STD. SPECS & DETAILS FOR COMB. INLET SD'S 561
E-5	Std. End Section, Alum. Pipe	7142	518.60		"
E-6	Std. End Section, Alum. Pipe	7141	516.23		"
I-7	Double Type 'S' Comb Inlet (parallel to road)	7171.37	528.93		Ho. Co. Std. Vol. IV SD M-34 VALLEY BOX INC. SD'S COMB.
I-8	Double Type 'S' Comb Inlet (parallel to road)	7171.37	528.93		"
I-9	"E" Inlet	7171.37	528.93		VALLEY BOX INC. (See detail 9M, 5019)
E-14	Std. End Section, Alum. Pipe	31185			Ho. Co. Std. Specs & DETAILS Vol. IV SD S. 61
I-15	A-10 Inlet	32100	479.68		HOWARD CO. STD. SPECS & DETAILS Vol. IV SD. 402
I-16	A-10 Inlet	32100	479.78		"
M-17	"E" Inlet	31127	468.80		VALLEY BOX INC. (See detail 9M, 5019)
E-18	Std. End Section, Alum. Pipe	32157	478.15		Ho. Co. STD. SPECS & DETAILS Vol. IV SD. 561
E-19	Std. End Section, Alum. Pipe	32156	478.15		"
E-20	Metal End Section arch metal pipe	NA	FIELD		Ho. Co. Std. Vol. II SD S. 63 * Kaiser Aluminum Pipe Arch
E-21	Metal End Section arch metal pipe	NA	FIELD		" SD S. 63 *



**PLAN**  
 SCALE: 1"=50'

TOTAL LENGTH WYNFIELD RD IN SECTION 3 1482' WHICH VARIES AS SHOWN

**ENGINEERS**  
 BATA ASSOCIATES, INC.  
 622 HUNGERFORD DRIVE SUITE 2A  
 ROCKVILLE, MARYLAND 20850  
 (301) 340-1702

**OWNER & DEVELOPERS**  
 BALLANGER CREEK ASSOCIATES  
 3450 FORT MEADE ROAD SUITE 206  
 LAUREL, MARYLAND 20707  
 (301) 953-7240

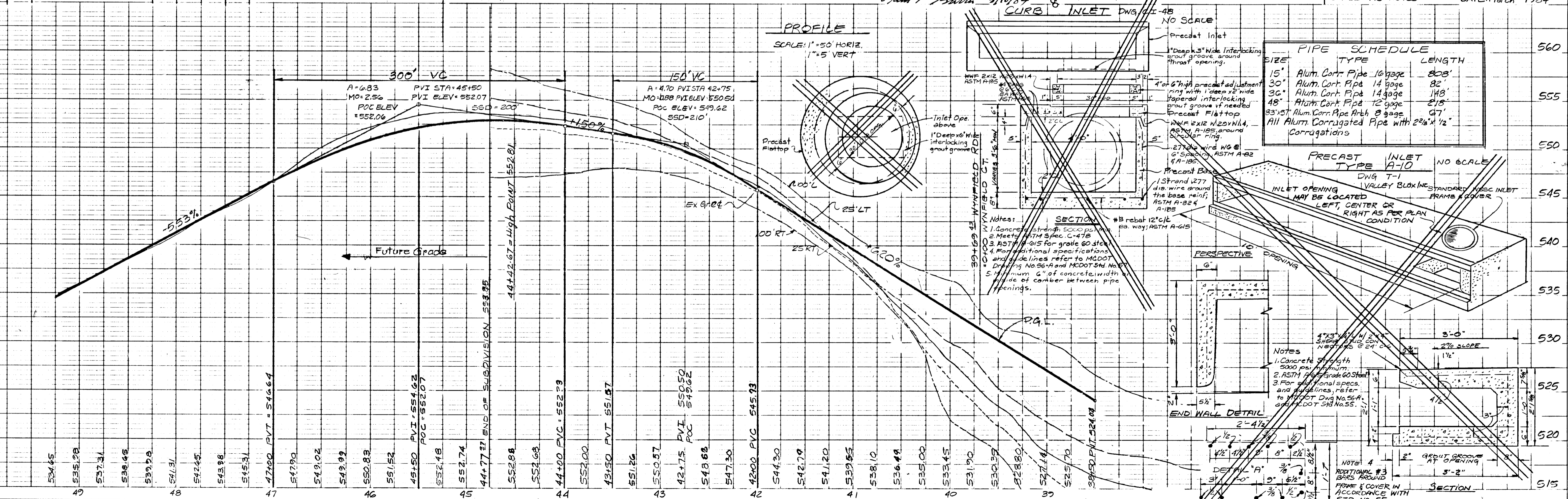
REV. NO.	DATE	DESCRIPTION
1	11.19.86	Delete E-10 on chart

APPROVED: OFFICE OF PLANNING & ZONING  
*[Signature]*  
 CHIEF, DIVISION OF LAND DEVELOPMENT DATE AND ZONING ADMINISTRATION

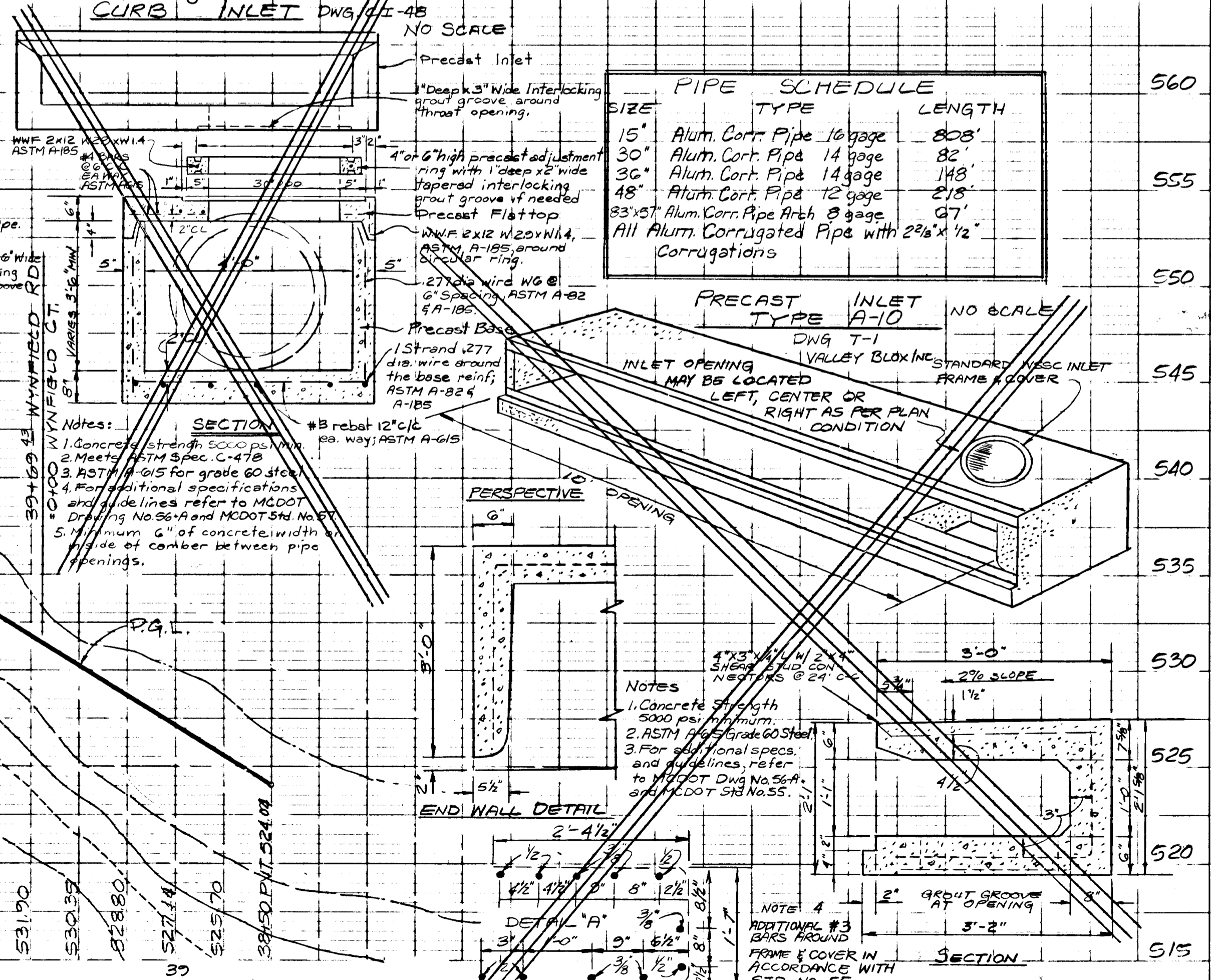
APPROVED: DEPARTMENT OF PUBLIC WORKS  
*[Signature]*  
 CHIEF, BUREAU OF ENGINEERING DATE

**WYNFIELD SECTION THREE**  
**WYNFIELD ROAD**  
 ROAD CONSTRUCTION AND STORM DRAIN CONSTRUCTION PLANS

3RD ELECTION DISTRICT, HOWARD CO. MARYLAND  
 SCALE: AS NOTED DATE: March, 1984

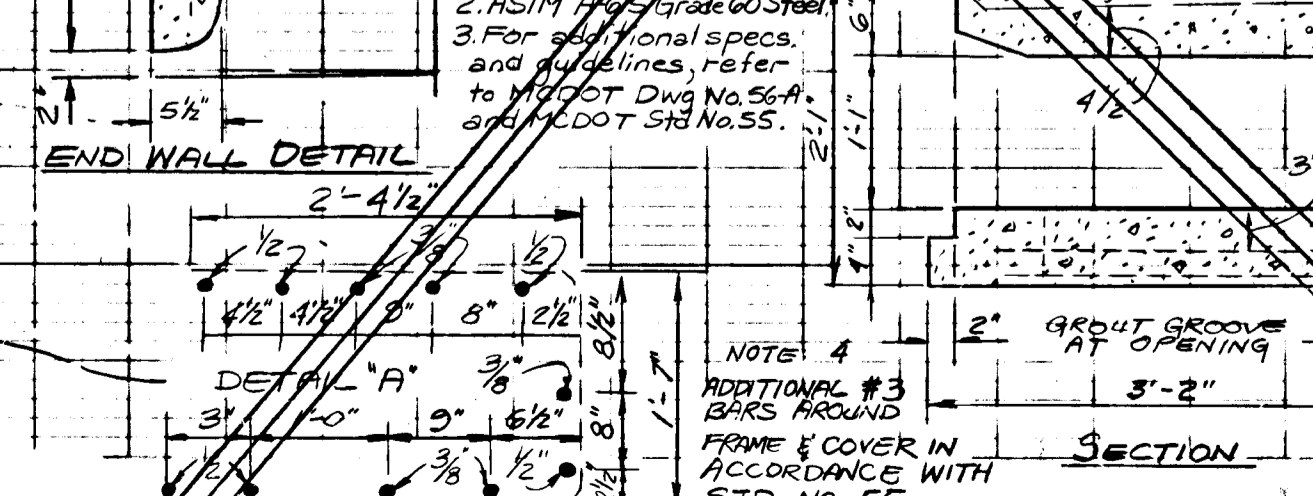
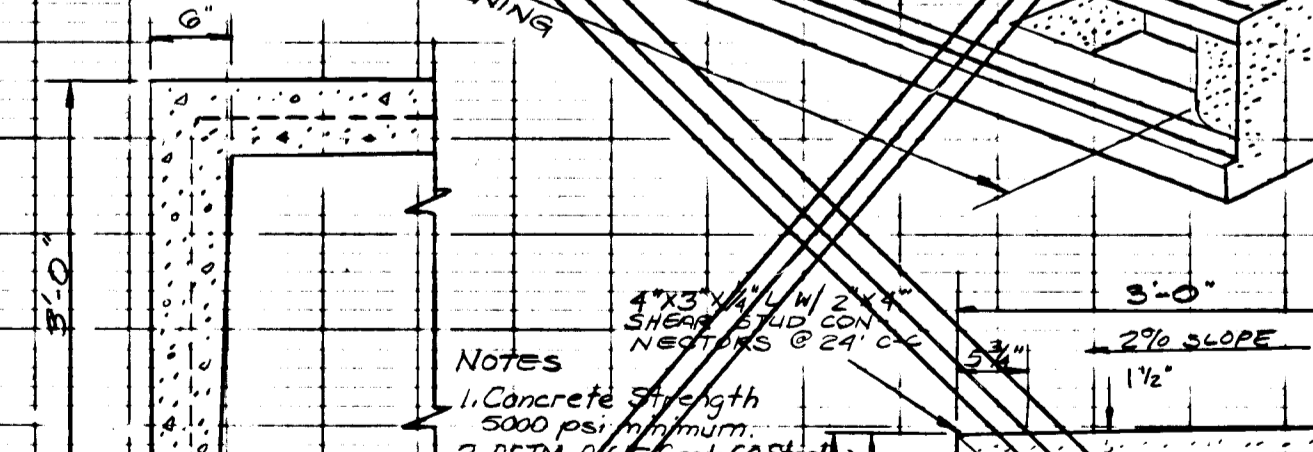
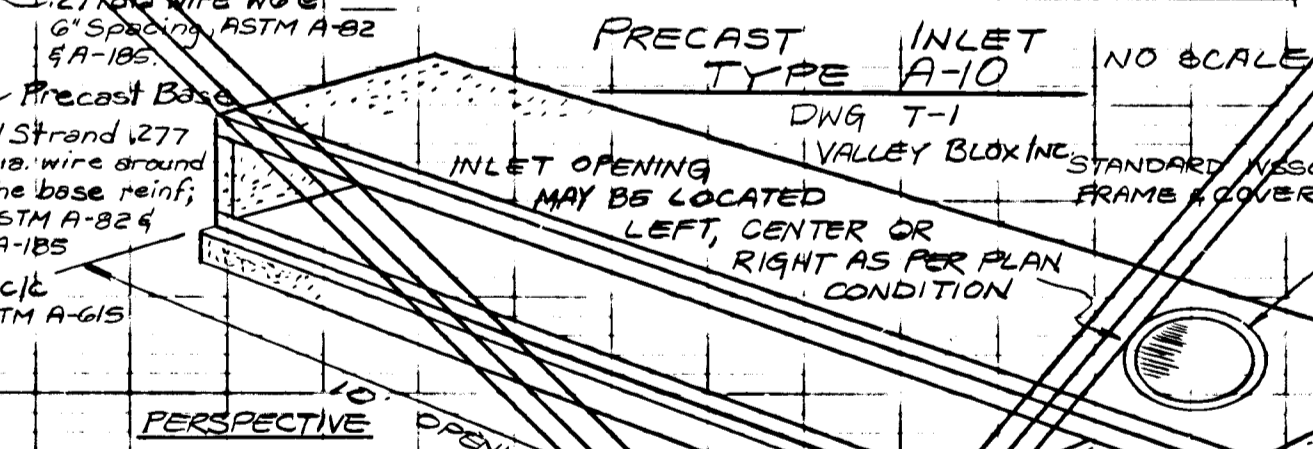


**PROFILE**  
 SCALE: 1"=50' HORIZ.  
 1"=5' VERT.



SIZE	PIPE TYPE	SCHEDULE	LENGTH
15"	Alum. Corrt. Pipe	16 gage	808'
30"	Alum. Corrt. Pipe	14 gage	82'
36"	Alum. Corrt. Pipe	14 gage	148'
48"	Alum. Corrt. Pipe	12 gage	218'
83"	Alum. Corrt. Pipe Arch	8 gage	67'

All Alum. Corrugated Pipe with 2 3/8" x 1/2" Corrugations



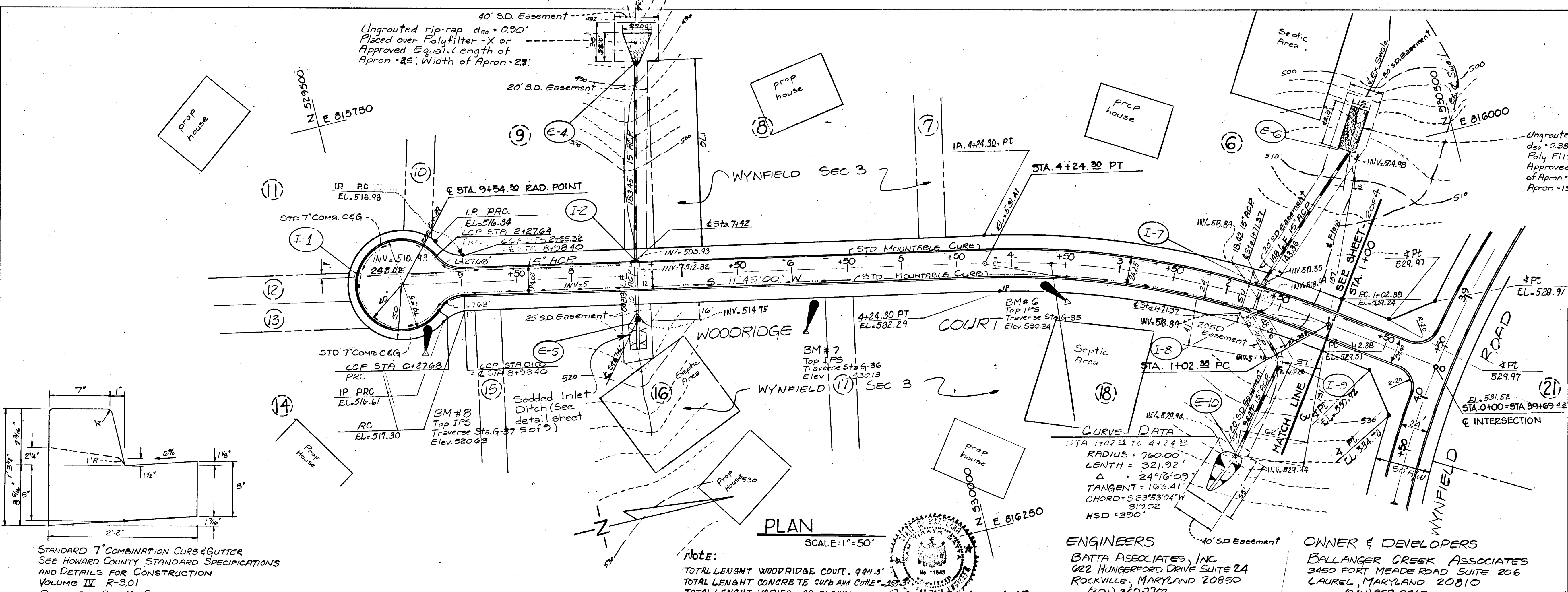
PLAN SURVEYED BY: DATE: NO. OF POINTS CHECKED: NO. OF WAY CHECKED: NO. OF STRUCTURE NOTATIONS CHECKED:

PROFILE SURVEYED BY: DATE: NO. OF POINTS CHECKED: NO. OF WAY CHECKED: NO. OF STRUCTURE NOTATIONS CHECKED:

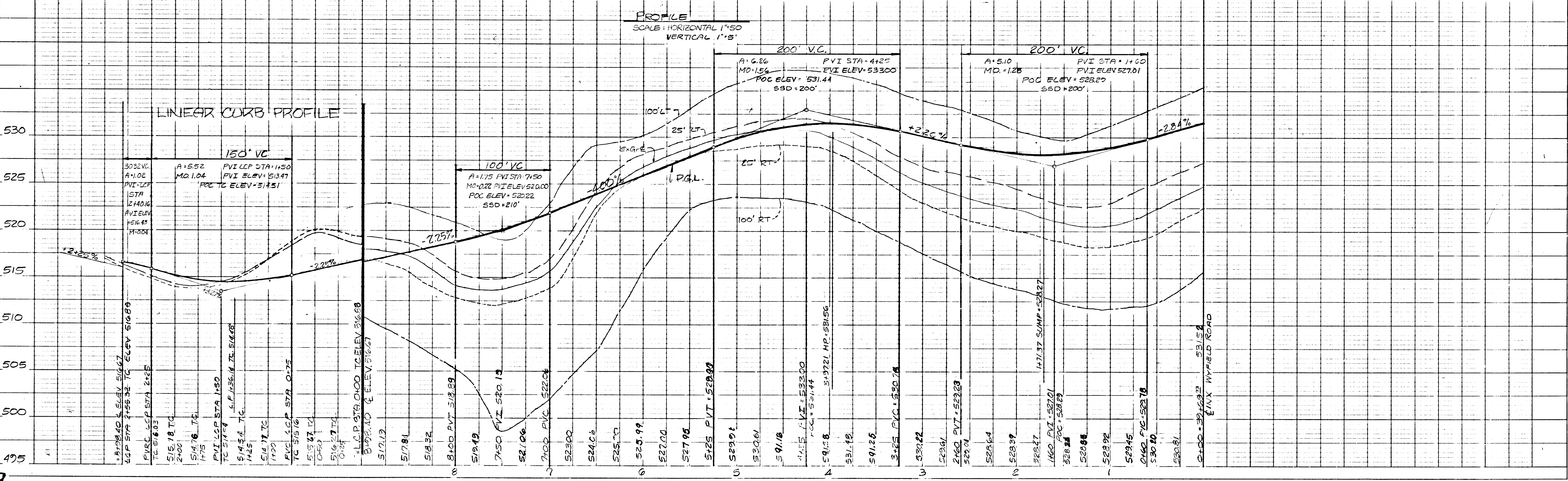
#899

DATE: \_\_\_\_\_  
 BY: \_\_\_\_\_  
 SURVEYED: \_\_\_\_\_  
 NOTE BOOK: \_\_\_\_\_  
 GRADES CHECKED: \_\_\_\_\_  
 R. M. V. NOTED: \_\_\_\_\_  
 NO. \_\_\_\_\_  
 STRUCTURE NOTATIONS CHECKED: \_\_\_\_\_

DATE: \_\_\_\_\_  
 BY: \_\_\_\_\_  
 SURVEYED: \_\_\_\_\_  
 NOTE BOOK: \_\_\_\_\_  
 GRADES CHECKED: \_\_\_\_\_  
 R. M. V. NOTED: \_\_\_\_\_  
 NO. \_\_\_\_\_  
 STRUCTURE NOTATIONS CHECKED: \_\_\_\_\_



REV No.	DATE	DESCRIPTION
		APPROVED OFFICE OF PLANNING & ZONING
		APPROVED: DEPARTMENT OF PUBLIC WORKS
		CHIEF, BUREAU OF ENGINEERING
<b>WYNFIELD SECTION THREE</b>		
<b>WOODRIDGE COURT</b>		
ROAD CONSTRUCTION AND STORM DRAIN CONSTRUCTION PLANS		
3RD ELECTION DISTRICT, HOWARD CO MARYLAND		
SCALE: AS NOTED DATE: March, 1984		



#899

PLATE 1-SINGLE PLAN AND PROFILE-FULL LINE

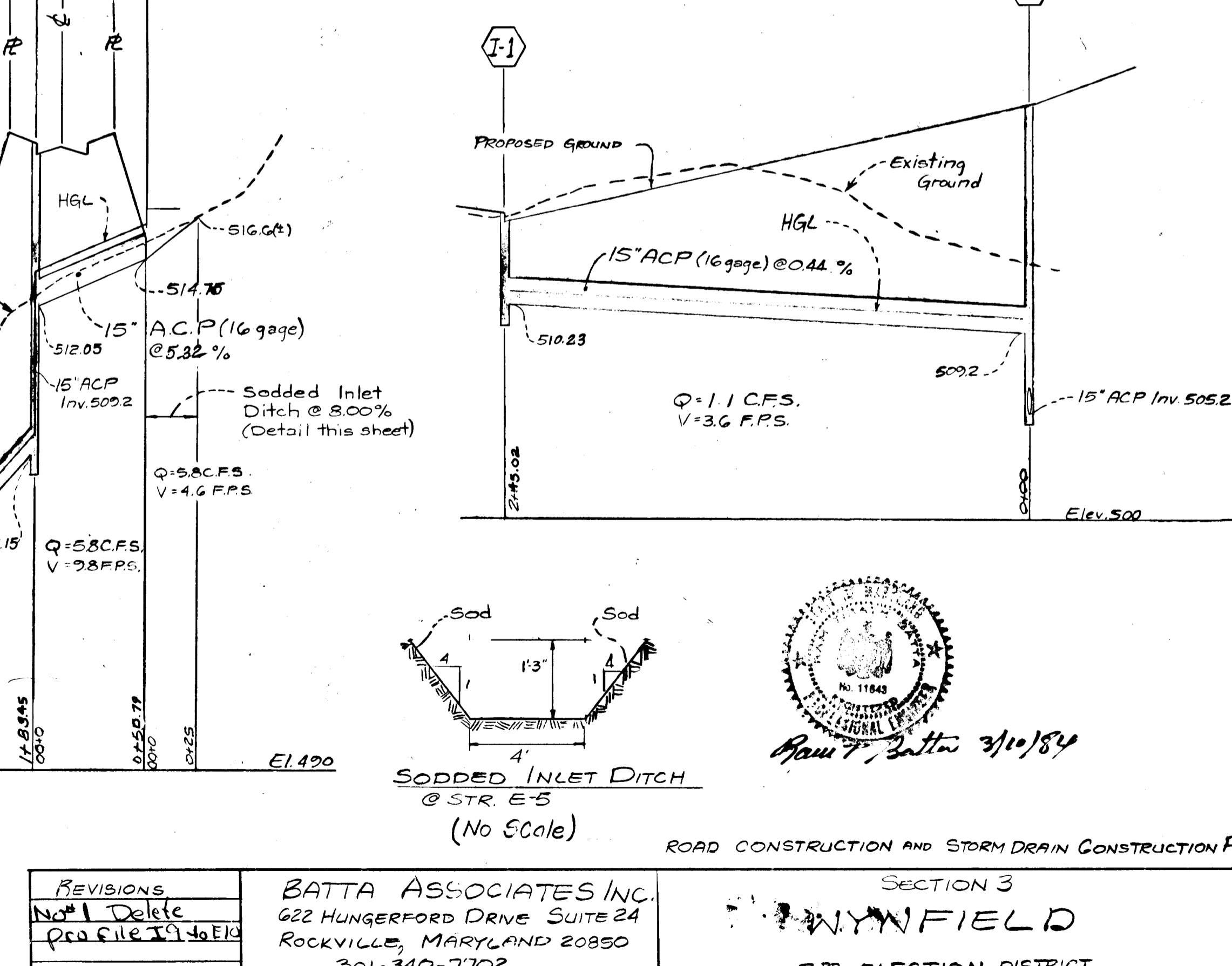
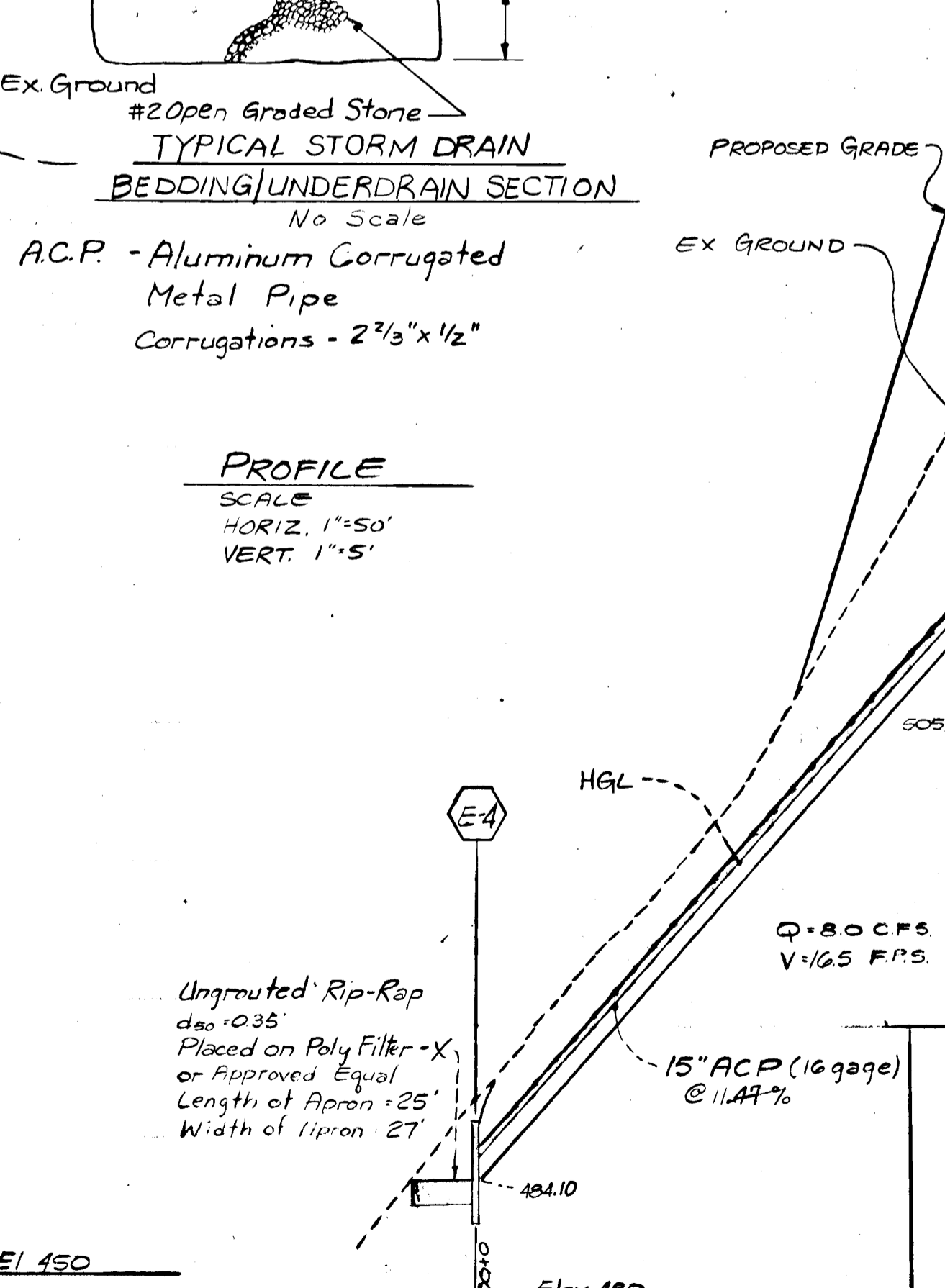
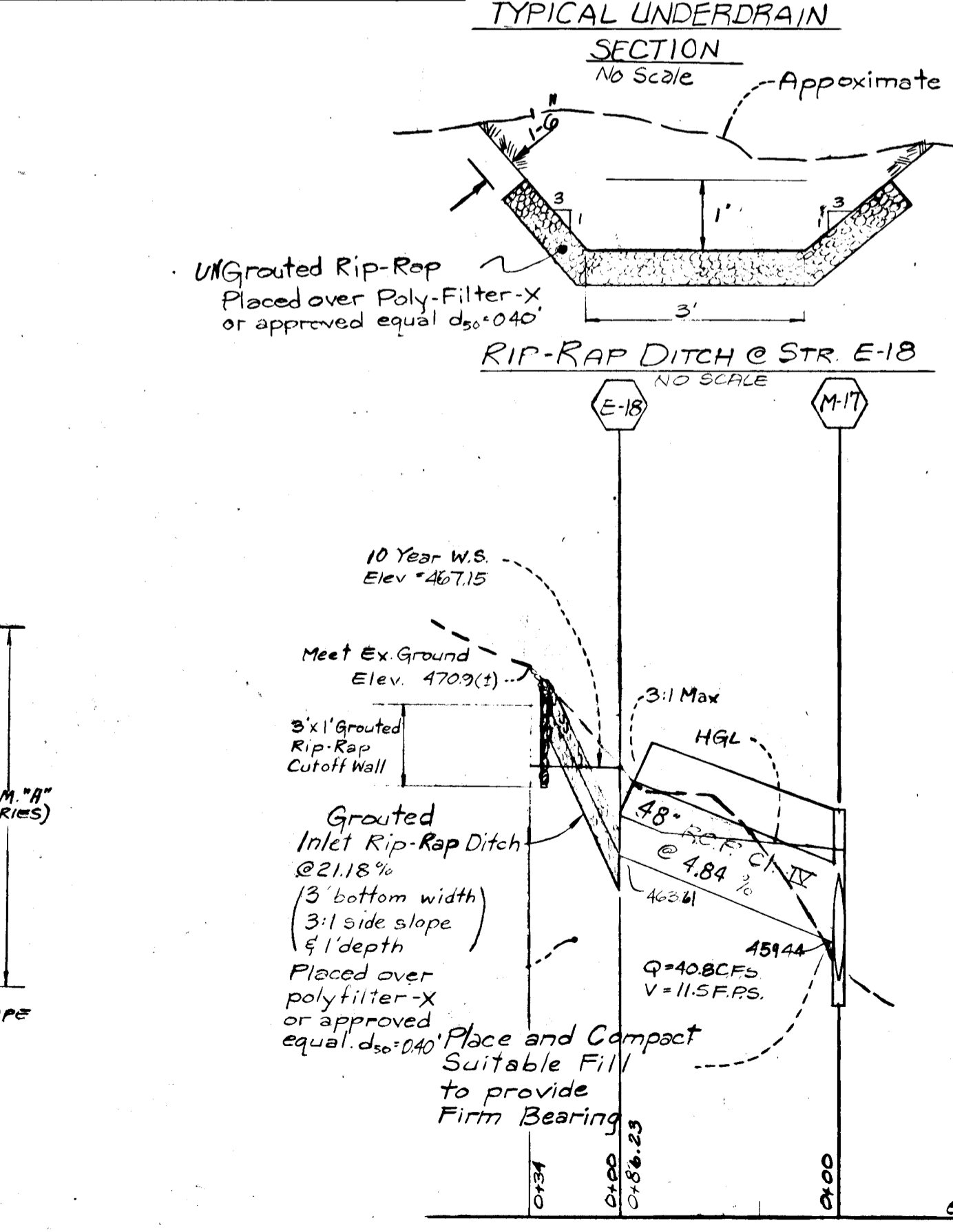
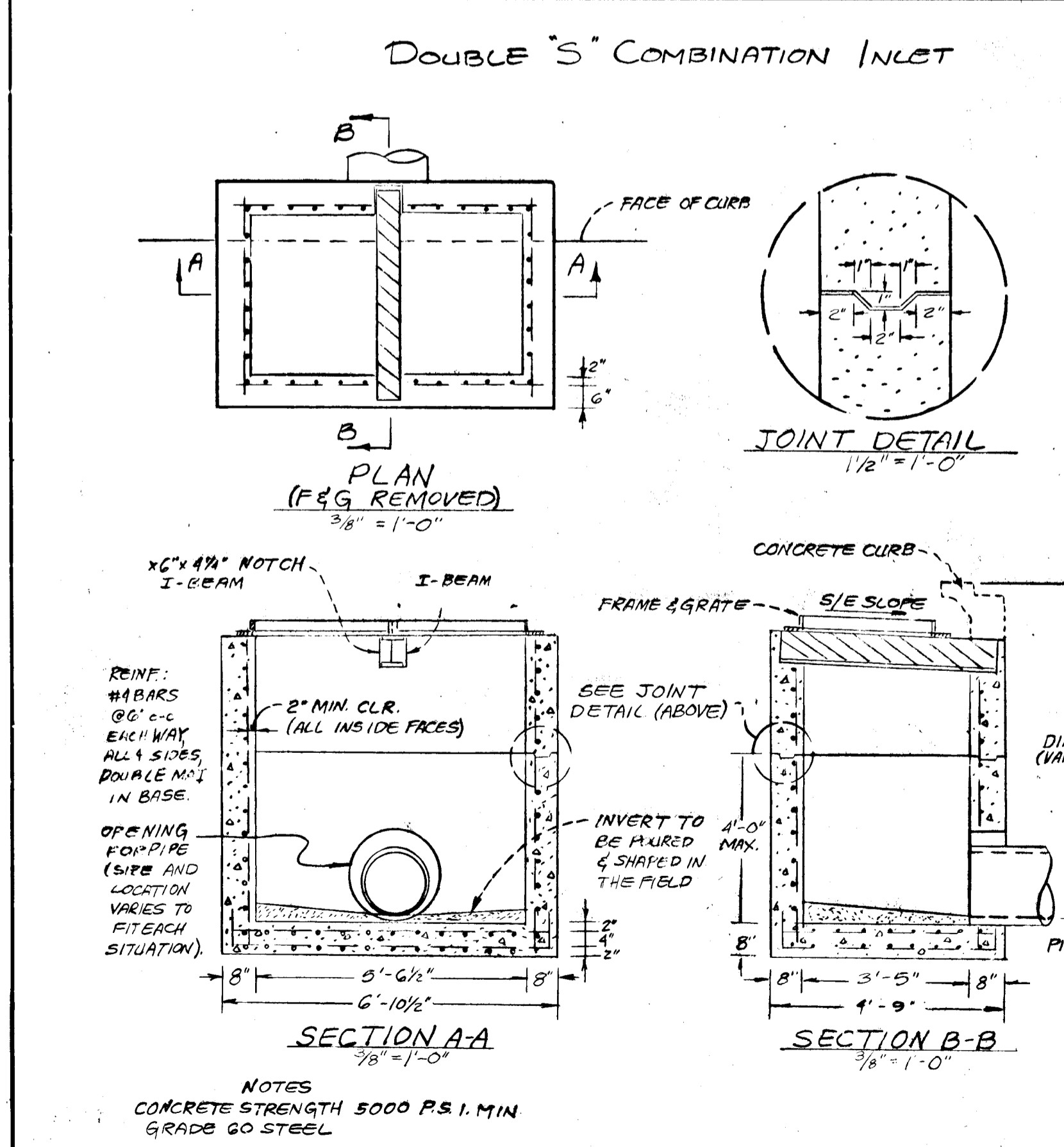
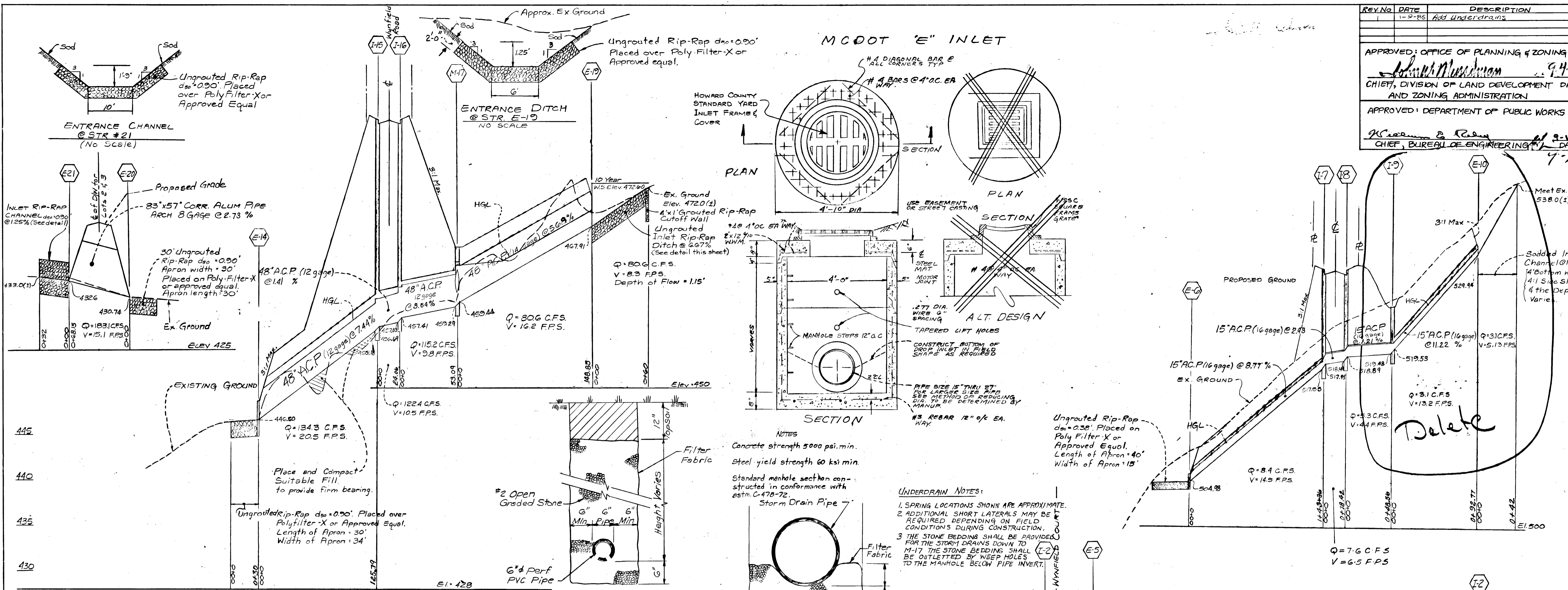
F-84-134  
 AS BUILT 3-9-84

Sht 4 of 9

REV. NO.	DATE	DESCRIPTION
1	1-9-88	Add underdrains

APPROVED: OFFICE OF PLANNING & ZONING  
*John M. ...* 9-18-84  
 CHIEF, DIVISION OF LAND DEVELOPMENT DATE AND ZONING ADMINISTRATION

APPROVED: DEPARTMENT OF PUBLIC WORKS  
*Robert ...* 9-18-84  
 CHIEF, BUREAU OF ENGINEERING DATE



#899

REVISIONS	DATE	DESCRIPTION
No. 1 Delete	9-18-84	See File 19-10-10

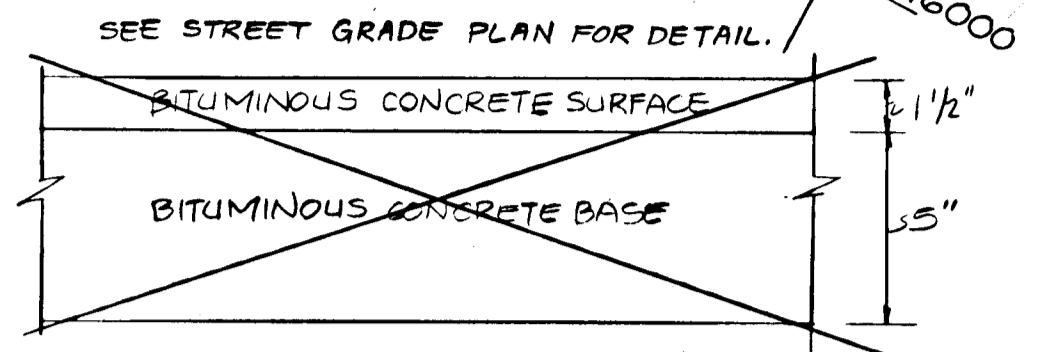
BATA ASSOCIATES INC.  
 622 HUNGERFORD DRIVE SUITE 24  
 ROCKVILLE, MARYLAND 20850  
 301-340-7702

Scale: Noted  
 Date: March 1984  
 Drawn by: D.P.  
 Checked by: R.T.B.

SECTION 3  
 WYNFIELD  
 33<sup>RD</sup> ELECTION DISTRICT  
 ROCKVILLE, MARYLAND 20850

DATE: \_\_\_\_\_ BY: \_\_\_\_\_  
 SURVEYED: \_\_\_\_\_ PLOTTED: \_\_\_\_\_  
 NOTE BOOK: \_\_\_\_\_ GRADES CHECKED: \_\_\_\_\_  
 NO. \_\_\_\_\_ ELEVATION INDICATORS CHECKED: \_\_\_\_\_

DATE: \_\_\_\_\_ BY: \_\_\_\_\_  
 SURVEYED: \_\_\_\_\_ PLOTTED: \_\_\_\_\_  
 NOTE BOOK: \_\_\_\_\_ GRADES CHECKED: \_\_\_\_\_  
 NO. \_\_\_\_\_ ELEVATION INDICATORS CHECKED: \_\_\_\_\_



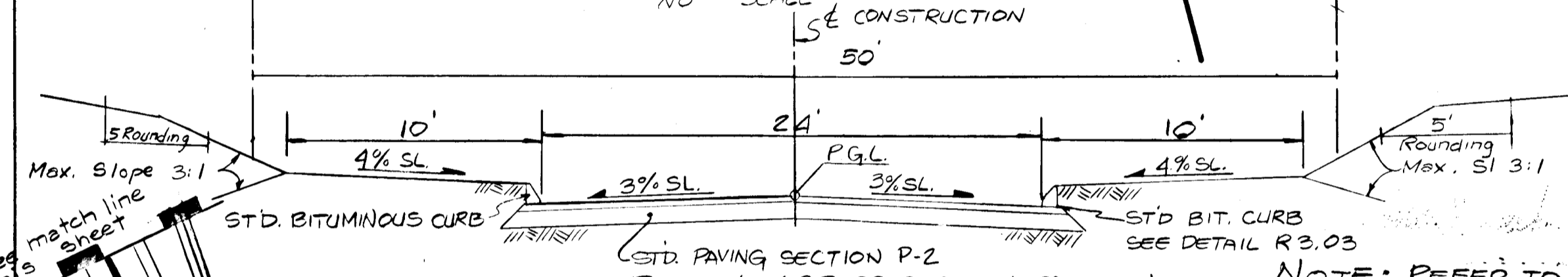
SECTION TO BE IN ACCORDANCE WITH THE LATEST EDITION OF THE HOWARD COUNTY DESIGN MANUAL, VOL. IV - STANDARD SPECIFICATIONS AND DETAILS FOR CONSTRUCTION.

TYPICAL PAVING SECTION  
NO SCALE

APPROVED: OFFICE OF PLANNING & ZONING  
*[Signature]* 9.14.84  
 CHIEF, DIVISION OF LAND DEVELOPMENT, PLANNING AND ZONING ADMINISTRATION

APPROVED: DEPARTMENT OF PUBLIC WORKS  
*[Signature]* 9.10.84  
 CHIEF, BUREAU OF ENGINEERING

LOCAL STREET TYPICAL SECTION  
NO SCALE

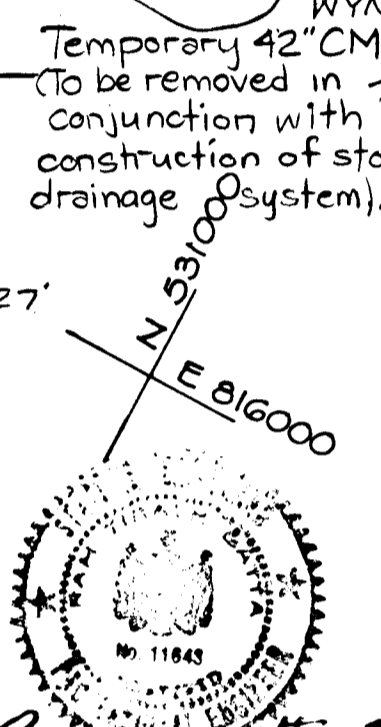


ROADWAY CROSS SECTION BASED ON HO. CO. STD. DETAIL R-1.02

NOTE: REFER TO ROAD CONSTRUCTION AND STORM DRAIN CONSTRUCTION PLANS FOR ALL STREET GRADES AND STORM DRAIN INFORMATION

PLAN SCALE: 1"=50'

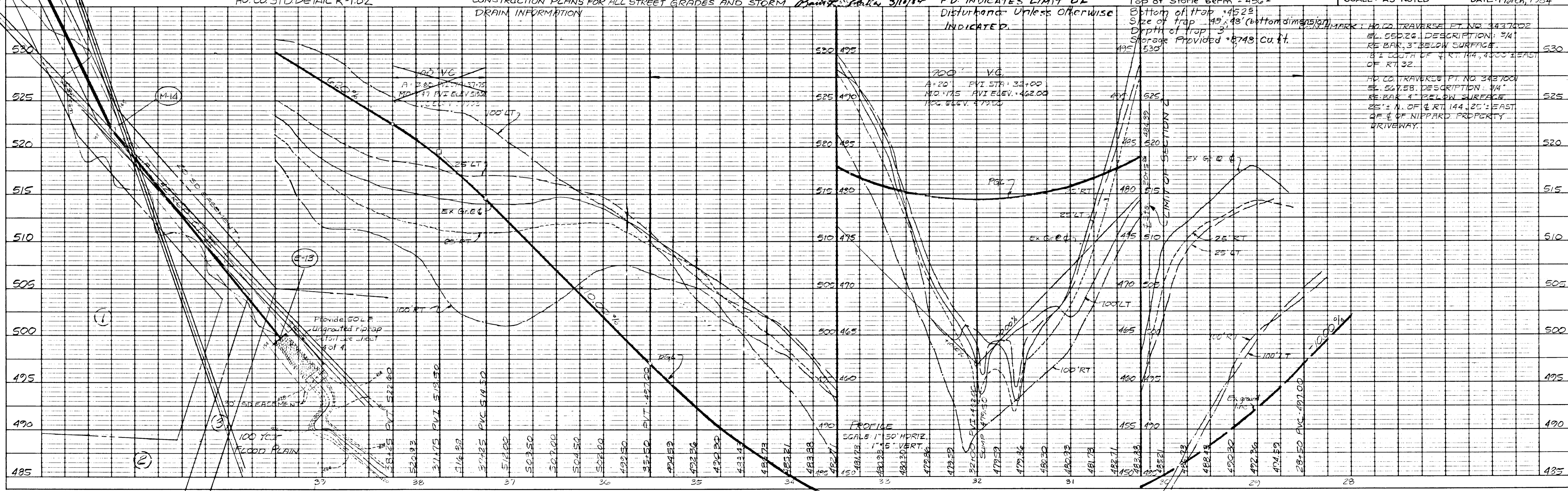
CURVE DATA  
 (STA 30+15 TO 30+50)  
 R=257.92  
 Δ=24°53'09"  
 L=222.20'  
 T=263.53'  
 CH=522'33"26"5"51427"



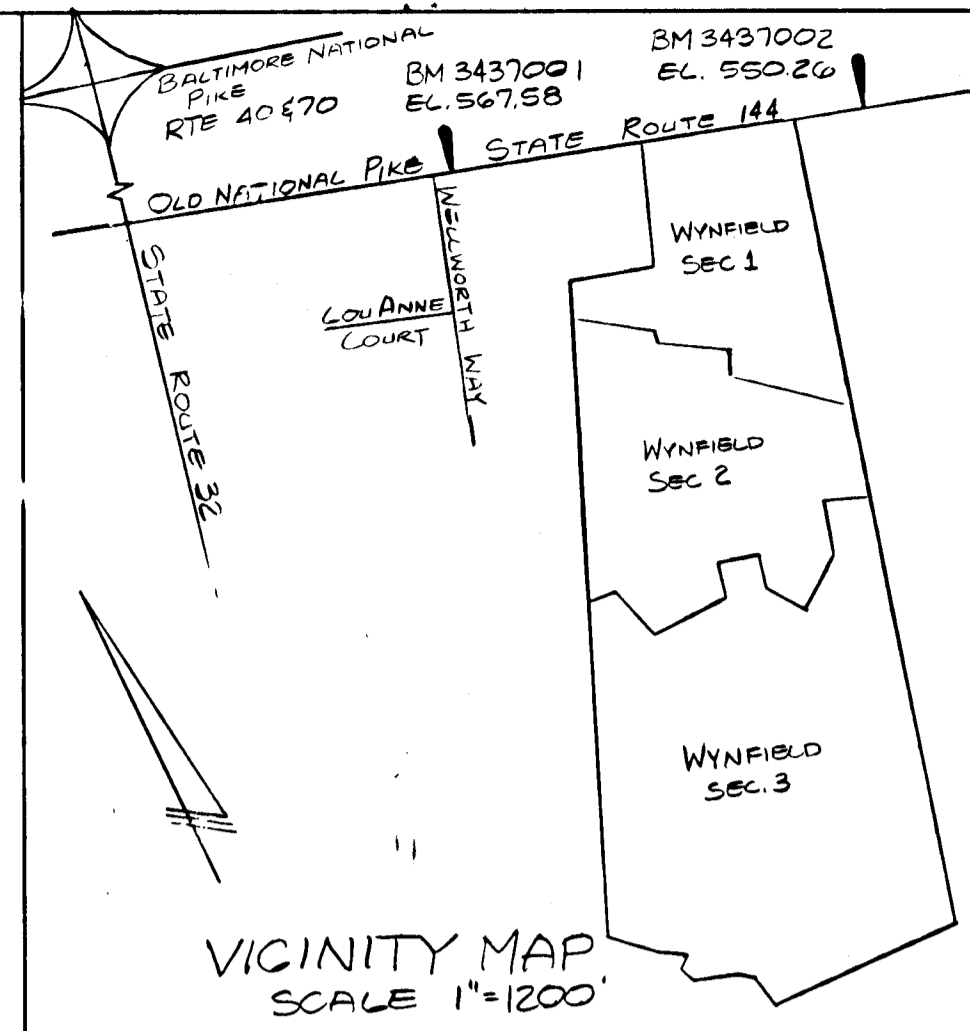
ENGINEERS  
 BATTA ASSOCIATES, INC.  
 622 HUNGERFORD DRIVE SUITE 24  
 ROCKVILLE, MARYLAND 20850  
 (301) 340-1702

OWNER & DEVELOPERS  
 BALLANGER CREEK ASSOCIATES  
 3150 FORT MEADE ROAD SUITE 206  
 LAUREL, MARYLAND 20707  
 (301) 953-9240

SEDIMENT TRAP #2  
 Drainage Area: 475 acres  
 Storage Required: 8596 cu. ft.  
 Length of stone berm: 30'  
 Top of stone berm: 456'  
 Bottom of trap: 452.5'  
 Size of trap: 45' x 48' (bottom dimension)  
 Depth of trap: 3'  
 Storage Provided: 8743 cu. ft.



PROFILE SCALE: 1"=50' HORIZ. 1"=5' VERT.



REV. No.	DATE	CHANGE PAVING SECTION	DESCRIPTION
1	6-13-85	CHANGE PAVING SECTION	
2	9-7-84		This development plan is approved for Soil Erosion & Sediment Control by the HO Soil Conservation District.
3	9-7-84		Reviewed for HO Soil Conservation Districts and meets technical requirements.

WYNFIELD SECTION THREE  
 WYNFIELD ROAD  
 SOIL EROSION AND  
 SEDIMENT CONTROL PLAN

3RD ELECTION DISTRICT, HOWARD CO MARYLAND  
 SCALE: AS NOTED DATE: March, 1984

MARK	HO. CO. TRAVERSE PT. NO.	EL.	DESCRIPTION
M-14	3437002	552.26	DESCRIPTION: 3/4" RE BAR, 3" BELOW SURFACE.
	3437004	547.58	DESCRIPTION: 3/4" RE BAR, 4" BELOW SURFACE.

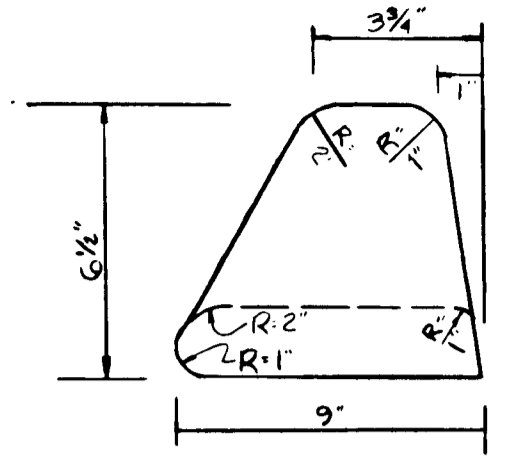
#899

HIGHWAY FEDERAL AID SHEET  
 PLATE 1-SINGLE PLAN AND PROFILE-FULL LINE  
 WYELDING  
 PRINTED IN U.S.A.

F-84-134

Sht 60F3  
 Sht 10F4

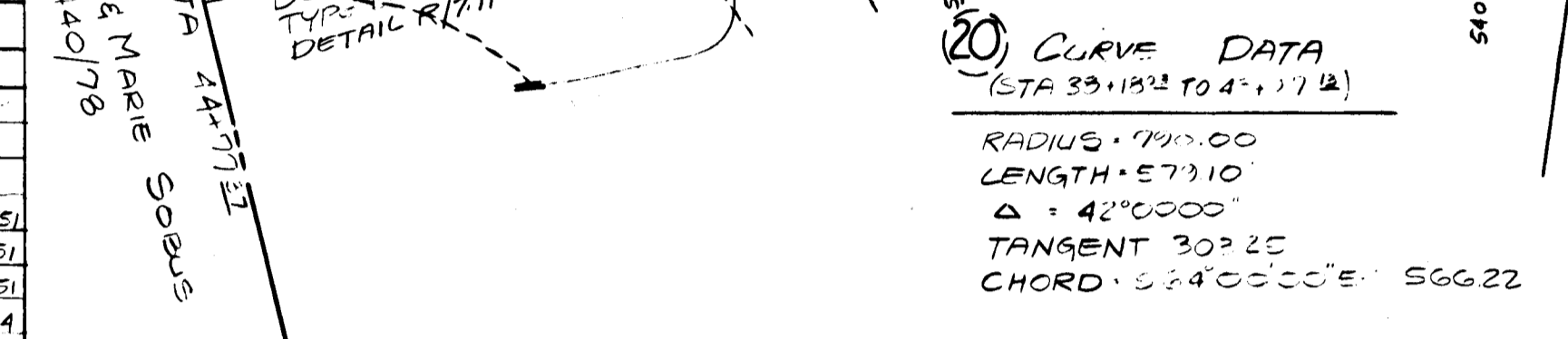
AS-BUILT 3-9-88



**MOUNTABLE CURB**  
NO SCALE  
SEE HOWARD COUNTY ROAD  
CONSTRUCTION CODE & STD.  
SPEC'S DWG D-39, D-94.

DATE \_\_\_\_\_ BY \_\_\_\_\_  
NO. \_\_\_\_\_  
PLANNING DIVISION  
NOTE BOOK ALIGNMENT CHECKED  
BY \_\_\_\_\_  
NO. \_\_\_\_\_

STRUCTURE SCHEDULE		SCHEDULE		REMARKS
No.	TYPE	STA TO P.C.	INVM INVAUT	
1				
2				
3				
E-4	Std Conc End Section, Conc Pipe	7150	500.8	SEE HO. CO. STD. SPEC'S FOR CONC. PIPE
E-5	Std Conc End Section, Conc Pipe	7150	515.4	
E-6	Std Conc End Section, Conc Pipe	NA	517.7	
I-7	Double type 'S' Conc Inlet (parallel to curb)	74	518.5	
I-8	Double type 'S' Conc Inlet (parallel to curb)	174	521.5	
E-9	Std Conc End Section, Conc Pipe	NA	522.4	
E-10	Std Conc End Section, Conc Pipe	NA	523.1	
M-11	Std Manhole	NA	423.0	
I-12	Double type 'S' Conc Inlet (parallel to curb)	3200	479.7	
E-13	Std Conc End Section, Conc Pipe	NA	478.3	
M-14	Std Manhole	NA	478.3	
I-15	Double type 'S' Conc Inlet (parallel to curb)	3200	479.7	
I-16	Double type 'S' Conc Inlet (parallel to curb)	3200	479.7	
M-17	Std Manhole	3202	470.4	
E-18	Type A Headwall Conc	3202	461.5	
E-19	Type A Headwall Conc	3272	464.5	



APPROVED: OFFICE OF PLANNING AND ZONING  
*[Signature]* 9-11-84  
CHIEF DIVISION OF LAND DEVELOPMENT AND ZONING ADMINISTRATION  
DATE 9-11-84  
APPROVED: DEPARTMENT OF PUBLIC WORKS  
*[Signature]* 9-10-84  
CHIEF, BUREAU OF ENGINEERING

NOTE: SEE ROAD CONSTRUCTION AND STORM DRAIN CONSTRUCTION PLANS FOR ALL STREET GRADES AND STORM DRAIN INFORMATION

PLAN  
SCALE: 1"=50'

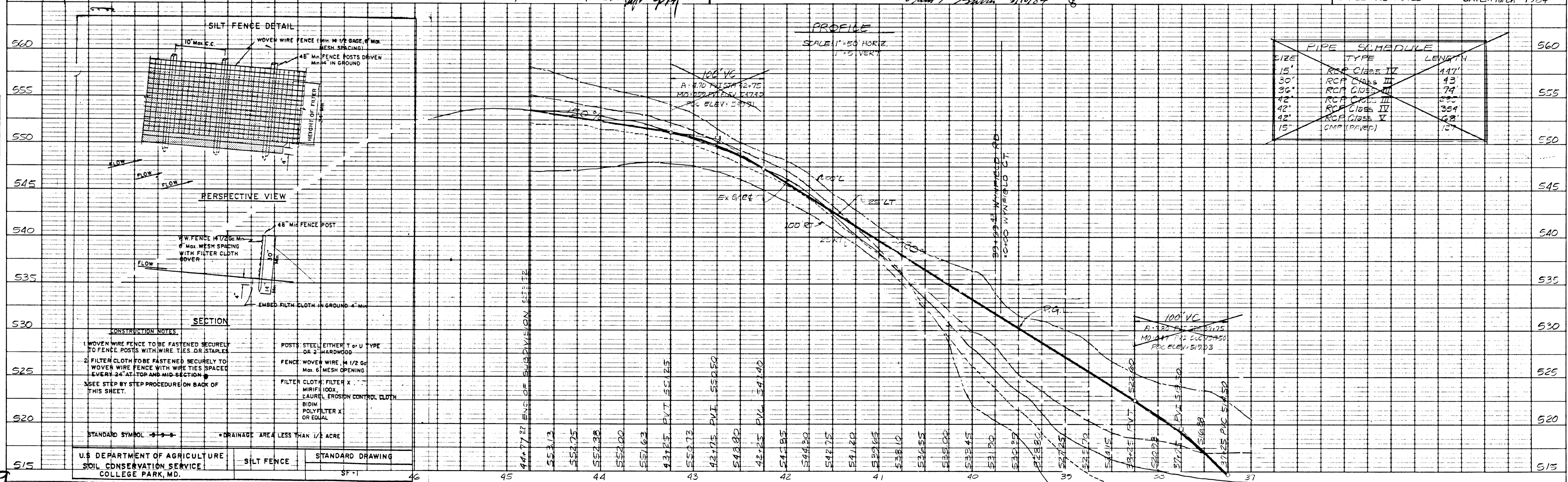


ENGINEERS  
BATA ASSOCIATES, INC.  
222 HUNGERFORD DRIVE SUITE 2A  
ROCKVILLE, MARYLAND 20850  
(301) 340-1702

OWNER & DEVELOPERS  
BALLANGER CREEK ASSOCIATES  
3450 FORT MEADE ROAD SUITE 206  
LAUREL, MARYLAND 20707  
(301) 953-7240

REV. No. DATE DESCRIPTION  
This development plan is approved for soil erosion & sediment control by the HQ soil conservation district.  
*[Signature]* 9-7-84  
HQ Soil Conservation District Date  
Reviewed for HQ Soil Conservation districts and meets technical requirements.  
*[Signature]* 9-7-84  
US Soil Conservation District DATE  
**WYNFIELD SECTION THREE**  
**WYNFIELD ROAD**  
SOIL EROSION AND SEDIMENT CONTROL PLAN  
3RD ELECTION DISTRICT, HOWARD CO MARYLAND  
SCALE: AS NOTED DATE: March 1984

DATE \_\_\_\_\_ BY \_\_\_\_\_  
NO. \_\_\_\_\_  
PROFILE DIVISION  
NOTE BOOK GRADES CHECKED  
BY \_\_\_\_\_  
NO. \_\_\_\_\_  
STRUCTURE NOTATIONS CHECKED



**CONSTRUCTION NOTES**  
1. WOVEN WIRE FENCE TO BE FASTENED SECURELY TO FENCE POSTS WITH WIRE TIES OR STAPLES.  
2. FILTER CLOTH TO BE FASTENED SECURELY TO WOVEN WIRE FENCE WITH WIRE TIES & SPACED EVERY 24" AT TOP AND MID SECTION.  
3. SEE STEP BY STEP PROCEDURE ON BACK OF THIS SHEET.  
POSTS: STEEL EITHER T OR U TYPE OR 2" HARDWOOD  
FENCE: WOVEN WIRE, 4 1/2" OR 6" MAX. MESH OPENING  
FILTER CLOTH: FILTER X, MIRIFIL 100X, LAUREL EROSION CONTROL CLOTH, BIODI, POLYFILTER X, OR EQUAL  
STANDARD SYMBOL: SILT FENCE  
DRAINAGE AREA LESS THAN 1/2 ACRE

U.S. DEPARTMENT OF AGRICULTURE  
SOIL CONSERVATION SERVICE  
COLLEGE PARK, MD.  
STANDARD DRAWING  
SF-1

#899

**SEDIMENT TRAP # 1**  
 DRAINAGE AREA = 0.81 acres  
 STORAGE AREA REQD = 1470 cu.ft.  
 LENGTH OF STONE BERM = 10'  
 TOP OF STONE = 512"  
 BOTTOM OF TRAP = 508"  
 SIZE OF TRAP = 24' x 11' (bottom dimension)  
 DEPTH OF TRAP = 3'  
 STORAGE PROVIDED = 1530 cu.ft.

FENCE  
 (See general note for specifications)

Temporary 15' CMP  
 (To be removed in conjunction with construction of storm drainage system.)

Temporary 15' CMP  
 (To be removed in conjunction with construction of storm drainage system.)

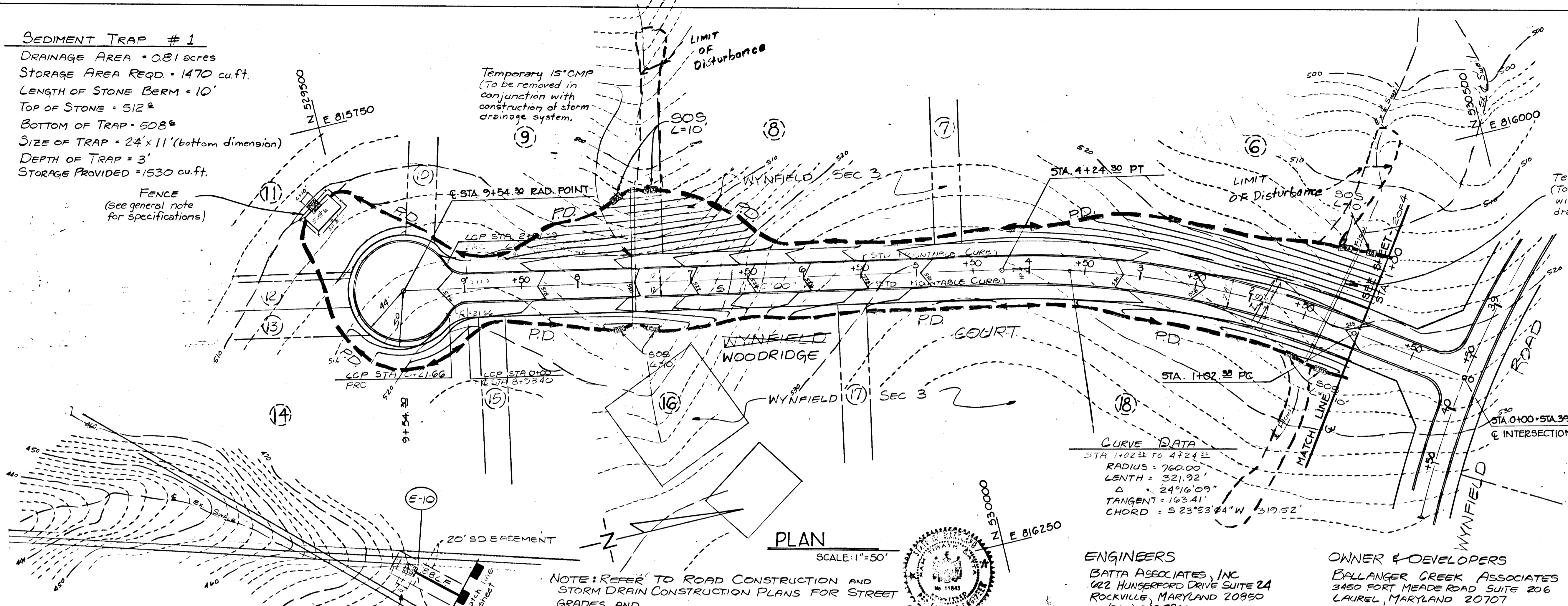
APPROVED: OFFICE OF PLANNING AND ZONING

*John M. ...* 01/84  
 CHIEF, DIVISION OF LAND DEVELOPMENT DATE AND ZONING ADMIN.

APPROVED: DEPARTMENT OF PUBLIC WORKS

*W. ...* 9-10-84  
 CHIEF, BUREAU OF ENGINEERING DATE

PLAN  
 SUBMITTED BY: ...  
 CHECKED BY: ...  
 DATE: ...

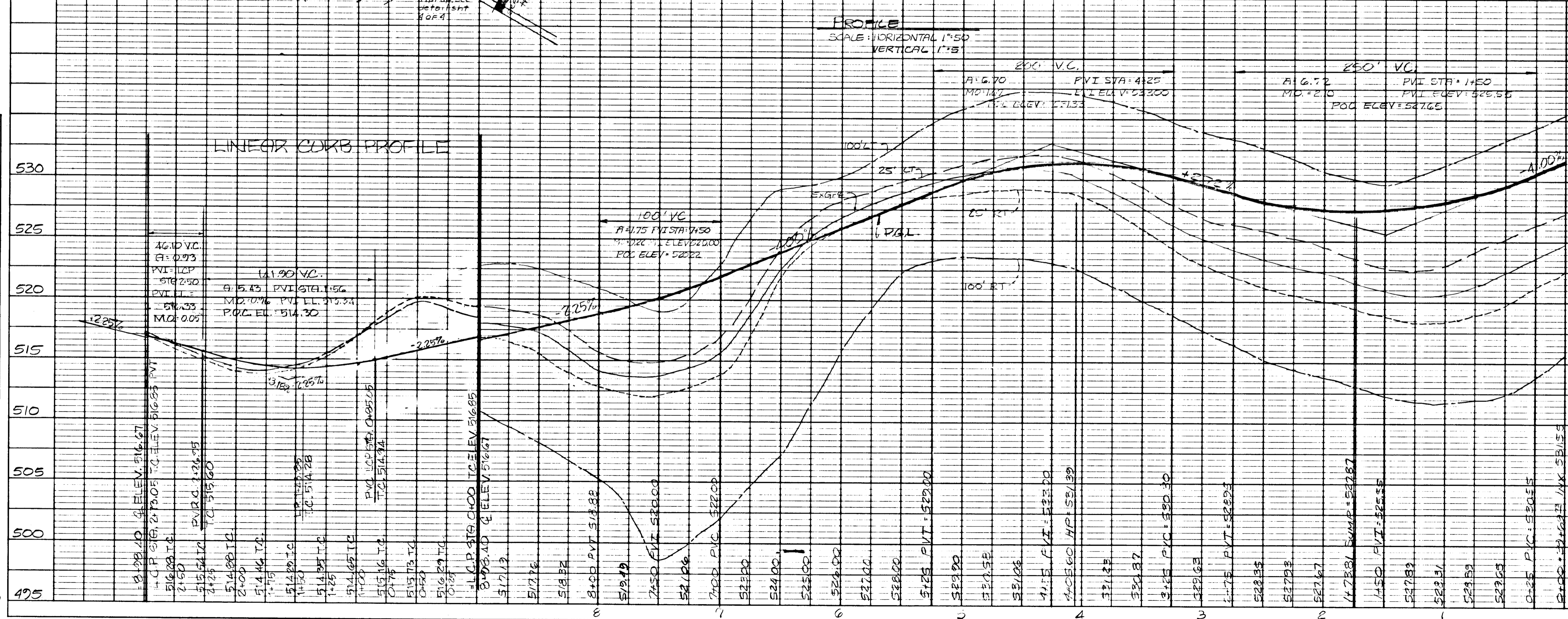


REV No	DATE	DESCRIPTION
		This development plan is approved for soil erosion & sediment control by the HQ Soil Conservation District.
		<i>Stephen L. ...</i> 9-31-84 HQ Soil Conservation District Date
		Reviewed for HQ Soil Conservation Districts and meets technical requirements
		<i>James M. ...</i> 8-31-84 HQ Soil Conservation District DATE
<b>WYNFIELD SECTION THREE</b>		
<b>WOODRIDGE WYNFIELD COURT</b>		
SEDIMENT CONTROL AND SOIL EROSION PLAN		
3RD ELECTION DISTRICT, HOWARD & MARYLAND		
SCALE: AS NOTED DATE: March, 1984		

**ENGINEERS**  
 BATA ASSOCIATES, INC.  
 622 HUNGERFORD DRIVE SUITE 2A  
 ROCKVILLE, MARYLAND 20850  
 (301) 340-7702

**OWNER & DEVELOPERS**  
 BALLANGER CREEK ASSOCIATES  
 3450 FORT MEADE ROAD SUITE 206  
 LAUREL, MARYLAND 20707  
 (301) 953-9210

PROFILE  
 SUBMITTED BY: ...  
 CHECKED BY: ...  
 DATE: ...



- SEQUENCE OF CONSTRUCTION**
1. Install stabilized stone construction entrance, dikes, sediment traps, swales, straw bales & temporary 42' and 15' CMP's.
  2. Rough grade road.
  3. Construct storm drains and block all storm drain inlets AS PER STD VPP-1-1983 Std 4.5 specs.
  4. Start paving construction.
  5. Stabilize disturbed areas.
  6. Remove PD, sediment traps & other sediment control devices upon stabilization.

