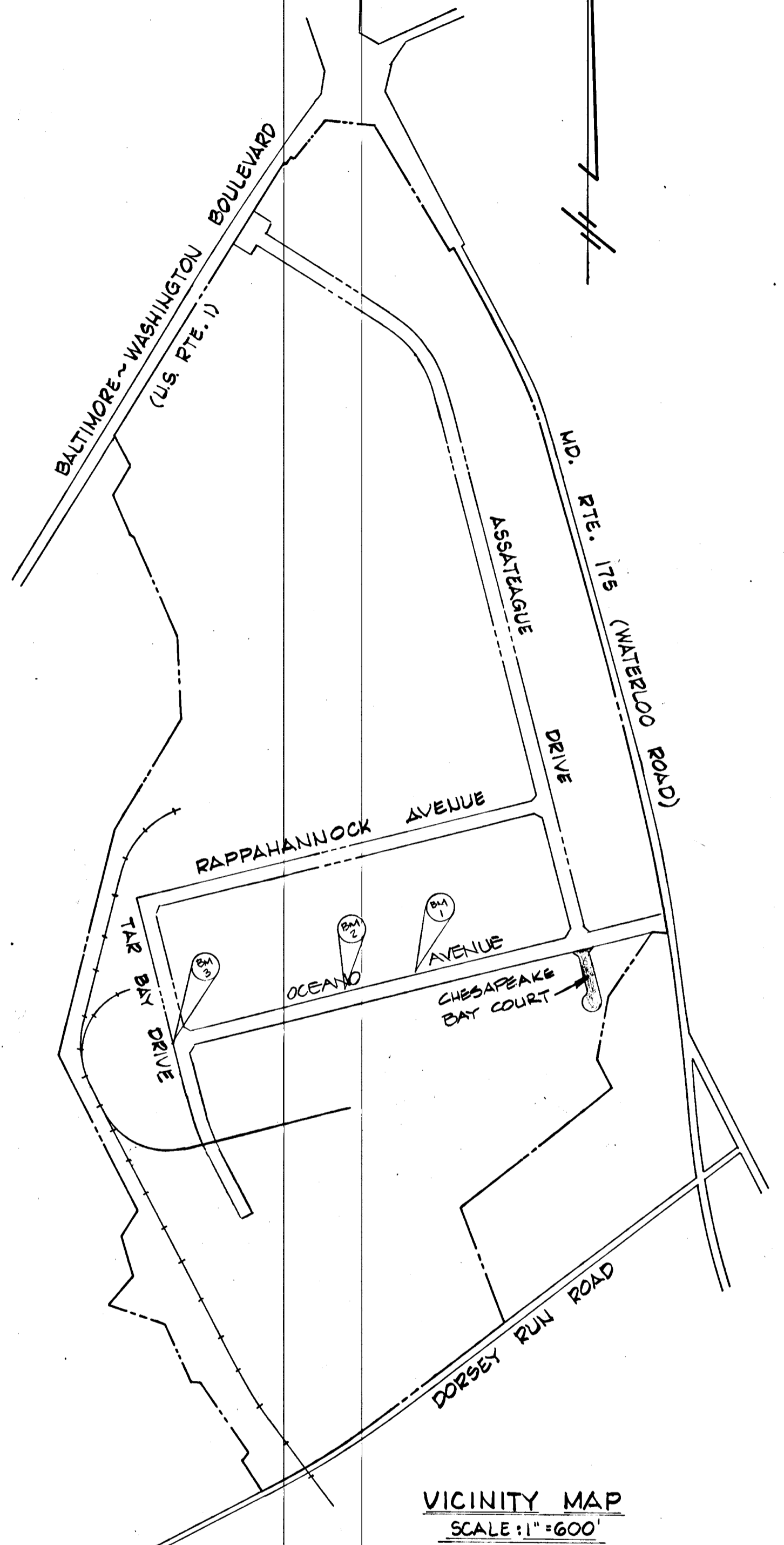
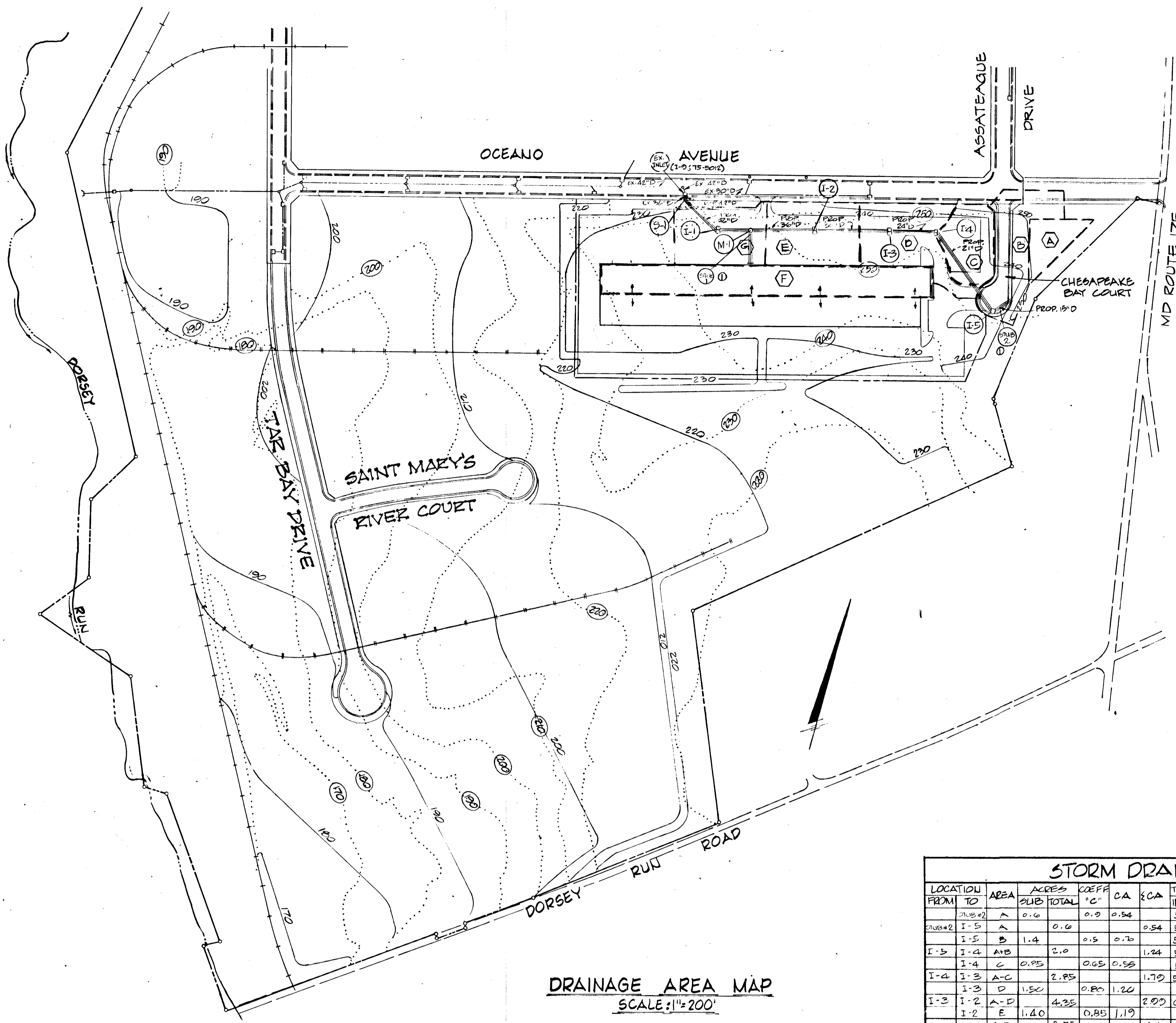


B.M.#1 X-Cut In Hold-Down Bolt 15+00 Oceano Ave. Elev. 222.83
 B.M.#2 X-Cut @ 24.25' Lt. & 12+00 Oceano Ave. Elev. 218.73
 B.M.#3 X-Cut @ 22.25' Rt. & 8+80 Tar Bay Dr. & P.I. Elev. 197.36



DRAINAGE AREA MAP
SCALE: 1"=200'

VICINITY MAP
SCALE: 1"=600'

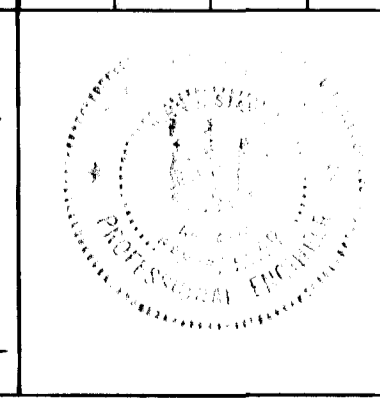
NOTE:
 EROSION AND SEDIMENT CONTROL FOR THIS WORK, AS WELL AS ON-SITE GRADING, ETC. IS SHOWN ON SITE PLAN SDP-83-188 AND WILL BE IMPLEMENTED IN ACCORDANCE WITH ARTICLE 19 OF THE SPECIFICATIONS.
 NOTE:
 STORM WATER MANAGEMENT PROVIDED BY CENTRAL STORM WATER MANAGEMENT FOLD, F-82-120

STORM DRAIN DESIGN DATA										STORM FREQUENCY 10 YR			
LOCATION FROM TO	AREA	ACRES SUB TOTAL	COEFF "C"	CA	CA	TIME CONCEN-MIN	INTEU Q-CVA	ECCP	R=0.014	Q-CVA	SLOPE	VELOC	LENGTH
Stub#2 I-5 A	0.6	0.9	0.54			5.0	8.5	4.6		8.5	3.6	80'	
Stub#2 I-5 B	1.4	0.9	0.70	0.54		5.0	8.5	4.6	15"	8.5	3.6	80'	
I-5 I-4 A-B	2.0	0.65	0.55	1.24		5.0	8.5	4.6	10.3	21"	0.41	4.7 310'	
I-4 I-4 C	0.25	0.65	0.55			5.0	8.5	4.7					
I-4 I-3 A-C	2.85	0.80	1.20	1.70		5.4	1.2	6.6	7.8	24"	0.42	4.3 155'	
I-3 I-3 D	1.50	0.80	1.20			5.0	8.5	10.2					
I-3 I-2 A-D	4.35	0.85	1.19	2.07		6.6	0.6	7.2	7.5	30"	0.34	4.5 240'	
I-2 I-2 E	1.40	0.85	1.19			5.0	8.5	10.1					
I-2 M-1 A-E	5.75	0.95	2.23	4.18		7.5	0.9	8.4	7.2	36"	0.22	4.2 208'	
Stub#1 M-1 F	2.35	0.95	2.23			5	5	8.5	18.96				
Stub#1 M-1 F	2.35			2.23		5	5	8.5	18.96	21"	1.58	7.5 10'	
M-1 I-1 A-F	8.10	0.90	1.17	6.41		8.4	0.8	9.2	6.8	36"	0.46	6.0 102'	
I-1 I-1 G	1.30	0.90	1.17			5.0	8.5	9.7					
I-1 S-1 A-G	9.40			7.58		9.2	0.3	9.5	6.8	42"	0.28	5.2 145'	
S-1 Exit A-G	9.40			7.58		9.2	0.5	9.7	6.7	42"	0.28	5.2 16'	

Stub No. & Length Stub#1 To M-1
 Date: 6/11/83
 APPROVED: Department of Public Works
 Chief, Bureau of Engineering
 APPROVED: Howard County Office of Planning and Zoning
 Chief of Land Development and Zoning Administration

ENGINEER
GEORGE W. STEPHENS, JR. & ASSOCIATES, INC.
 303 ALLEGHENY AVENUE
 TOWSON, MARYLAND 21204
 301-825-8120

CERTIFICATION BY THE ENGINEER:
 I HEREBY CERTIFY THAT THIS PLAN FOR EROSION AND SEDIMENT CONTROL REPRESENTS A PRACTICAL AND WORKABLE PLAN BASED ON MY PERSONAL KNOWLEDGE OF THE SITE CONDITIONS AND THAT IT WAS PREPARED IN ACCORDANCE WITH THE REQUIREMENTS OF THE HOWARD SOIL CONSERVATION DISTRICT.
 JOHN J. STANN 4732 5/2/83 DATE



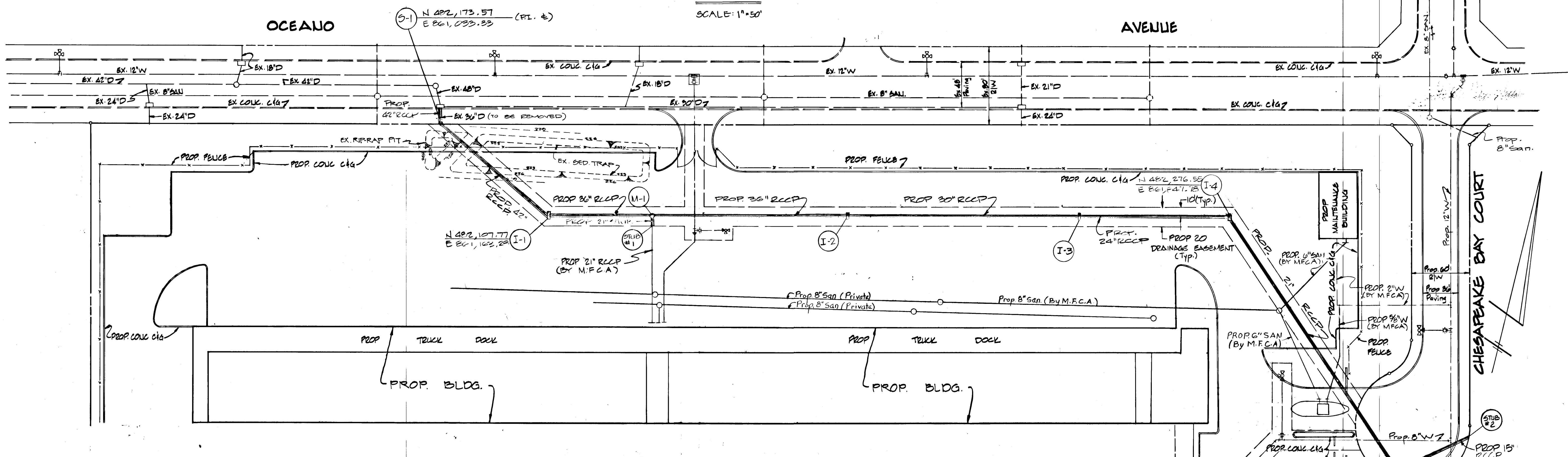
CERTIFICATION BY THE DEVELOPER:
 I CERTIFY THAT ALL DEVELOPMENT AND/OR CONSTRUCTION WILL BE DONE ACCORDING TO THIS PLAN AND THAT ANY RESPONSIBLE PERSONNEL INVOLVED IN THE CONSTRUCTION OF THE PROJECT WILL HAVE A CERTIFICATE OF ATTENDANCE AT A DEPARTMENT OF NATURAL RESOURCES APPROVED TRAINING PROGRAM FOR THE CONTROL OF SEDIMENT AND EROSION BEFORE BEGINNING THE PROJECT.
 6/17/83 12/21/82 DATE

THIS DEVELOPMENT PLAN IS APPROVED FOR SOIL EROSION AND SEDIMENT CONTROL BY THE HOWARD SOIL CONSERVATION DISTRICT.
 APPROVED: DATE: 6-16-83
 REVIEWED FOR HOWARD S.C.D. AND MEETS TECHNICAL REQUIREMENTS
 SIGNATURE: DATE: 6-16-83
 U.S. SOIL CONSERVATION SERVICE

MARYLAND
WHOLESALE FOOD CENTER
STORM DRAINS & ROADS
DRAINAGE AREA MAP & VICINITY MAP
CHESAPEAKE BAY COURT
 HOWARD COUNTY, MARYLAND ELECTION DISTRICT NO. 6
 SCALE: AS SHOWN SHEET 1 OF 3 DECEMBER 1982

PLAN

SCALE: 1"=50'



STRUCTURE SCHEDULE

NO.	TYPE	TOP ELEV.	IN. IN	IN. OUT	STD. NO.
S-1	BEND	229.00*	221.80	221.76	SD-101
I-1	DBL'S GRATE INLET	229.00**	222.86	222.86	SD-4.23
I-2	DBL'S GRATE INLET	229.80**	224.20	224.00	SD-4.23
I-3	DBL'S GRATE INLET	230.10**	228.66	228.16	SD-4.23
I-4	DBL'S GRATE INLET	232.90**	226.69	226.44	SD-4.23
I-5	DBL'S COMB. INLET	234.20**	229.84	229.33	SD-4.94
M-1	PRECAST MANHOLE	232.80**	223.17	222.97	G 5.11

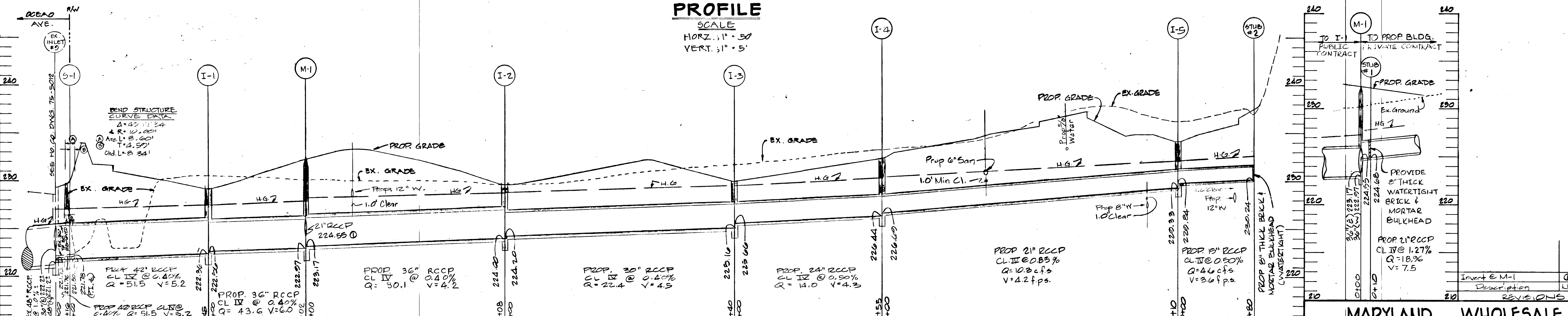
* TOP OF MANHOLE
** TOP OF GRATE

REF. DNG. NO.
R.D. 75-5008 & 5009
R.D. SHT. 30F3 CHESAPEAKE BAY CT.
WATER SHT. 1 OF 1 CHESAPEAKE BAY CT.
WATER } CONTR. 664-D-W-85 (SHT. 1-G OF 6)
SAN. }
SAN. SHT. 1 OF 1 CHESAPEAKE BAY CT.
S.D. 75-5008, 8, 9
S.D. 75-5012

NOTE:
All Structures Shall Have Minimum
One-Half Developed Inverts.

PROFILE

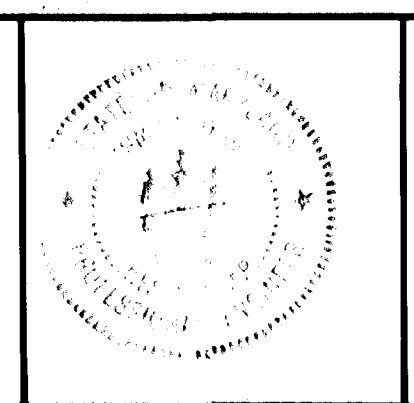
SCALE
HORIZ. 1"=50'
VERT. 1"=5'



APPROVED: Department of Public Works
Chief, Bureau of Engineering
APPROVED: Howard County Office of Planning and Zoning
Chief of Land Development and Zoning Administration

ENGINEER
GEORGE W. STEPHENS, JR. & ASSOCIATES, INC.
303 ALLEGHENY AVENUE
TOWSON, MARYLAND
21204
301-825-5120

CERTIFICATION BY THE ENGINEER:
I HEREBY CERTIFY THAT THIS PLAN FOR SEWAGE AND
SEWAGE TREATMENT CONTROL REPRESENTS A PRACTICAL AND WORKABLE
PLAN BASED ON MY PERSONAL KNOWLEDGE OF THE SITE
CONDITIONS AND THAT IT WAS PREPARED IN ACCORDANCE
WITH THE REQUIREMENTS OF THE HOWARD SOIL CONSERVATION
DISTRICT.
John J. Stamm 4732 5/2/83
DATE



CERTIFICATION BY THE DEVELOPER:
I CERTIFY THAT ALL DEVELOPMENT AND/OR CONSTRUCTION
WILL BE DONE ACCORDING TO THIS PLAN AND THAT ANY
RESPONSIBLE PERSONNEL INVOLVED IN THE CONSTRUCTION OF
THIS PROJECT WILL HAVE A CERTIFICATE OF ATTENDANCE AT A
DEPARTMENT OF NATURAL RESOURCES APPROVED TRAINING
PROGRAM FOR THE CONTROL OF SEDIMENT AND EROSION BEFORE
BEGINNING THE PROJECT.
1/1/83 12/21/82
DATE

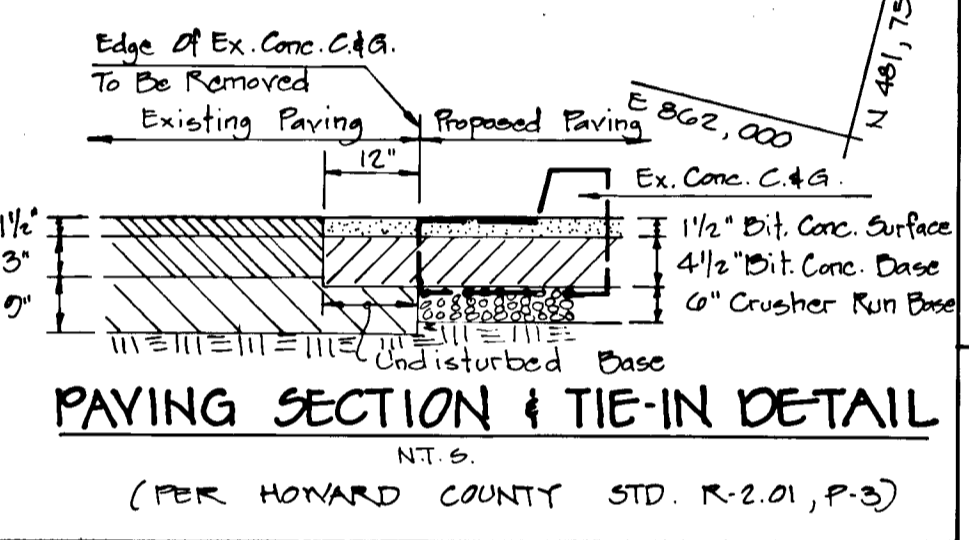
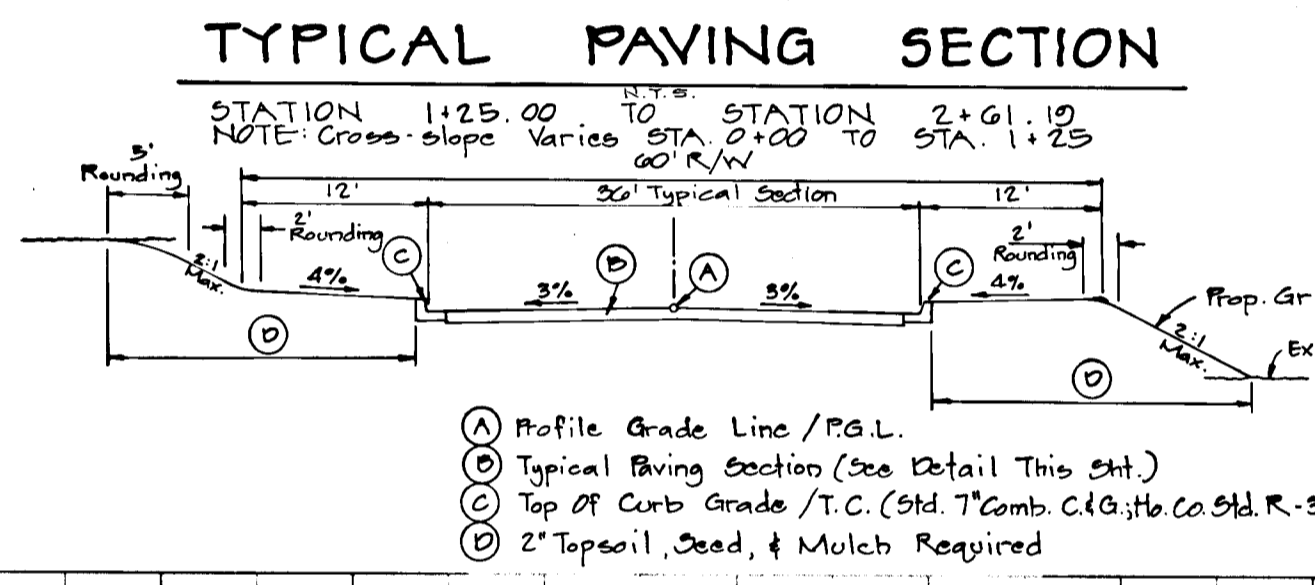
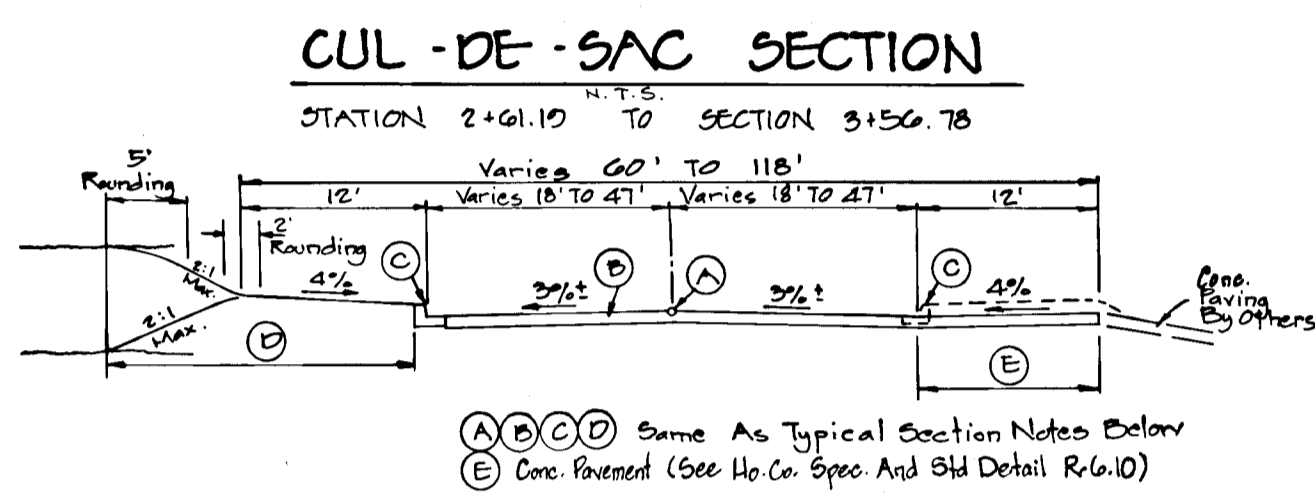
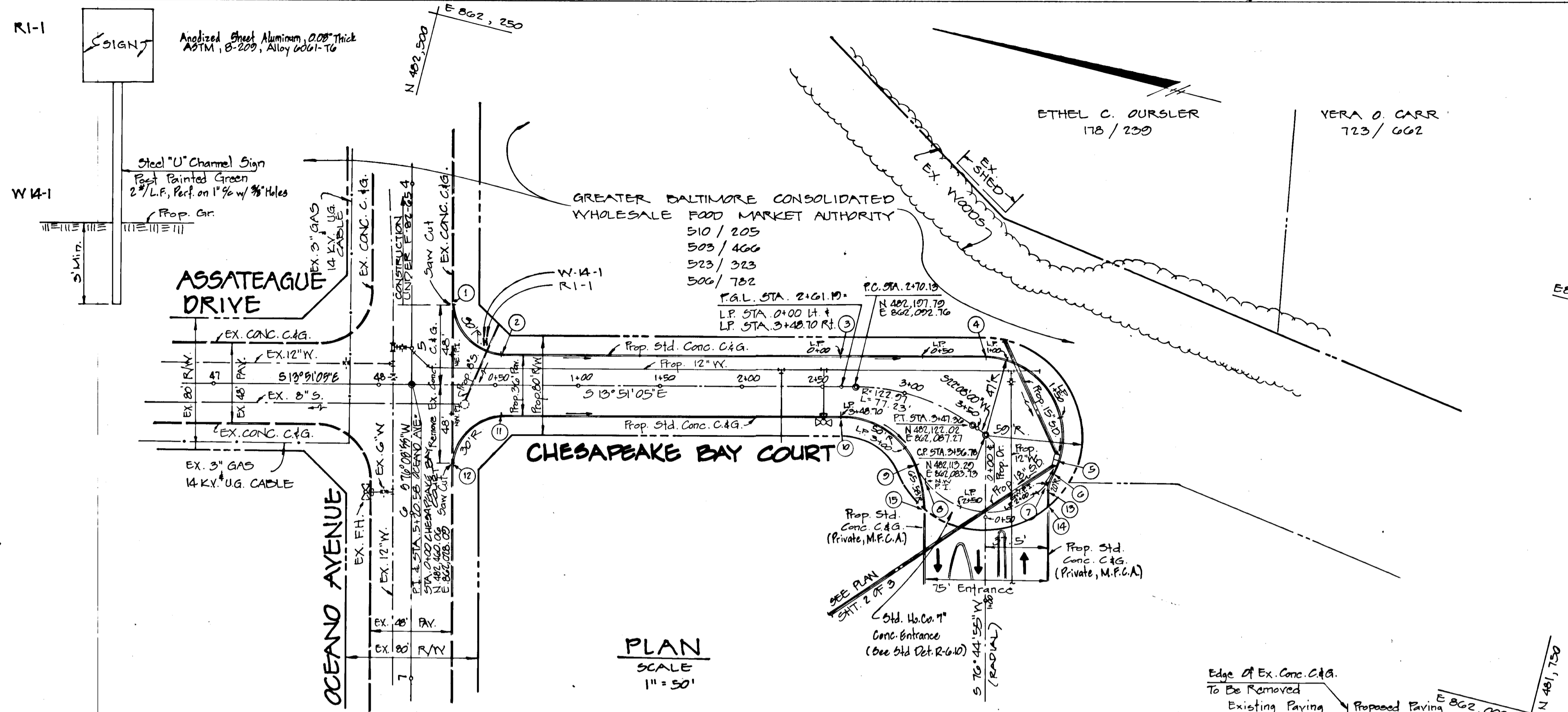
THIS DEVELOPMENT PLAN IS APPROVED FOR
SOIL EROSION AND SEDIMENT CONTROL BY THE
HOWARD SOIL CONSERVATION DISTRICT
APPROVED DATE 6/16/83
REVIEWED FOR HOWARD S.C.D. AND MEETS
TECHNICAL REQUIREMENTS.
DATE 6/16/83
HOWARD COUNTY, MD.
SCALE: AS SHOWN
SHEET 2 OF 3
ELECT. DIST. #6
JUNE 8, 1983

**MARYLAND WHOLESALE
FOOD CENTER
STORM DRAIN CONSTRUCTION PLANS
CHESAPEAKE BAY COURT**

HOWARD COUNTY, MD.
SCALE: AS SHOWN
SHEET 2 OF 3
ELECT. DIST. #6
JUNE 8, 1983

DESCRIPTION

- 1 P.C. 30' R. = STA. 4+72.58 OCEANO AVE, 24' LT.
- 2 P.T. 30' R. = STA. 0+54 CHESAPEAKE BAY COURT, 18' LT.
- 3 P.G.L. STA. 2+61.10, 18' LT. = 0+00 LINEAR PROFILE
- 4 P.C. CUL-DE-SAC = L.P. STA. 0+88.81
- 5 SUMP = L.P. STA. 1+78.08
- 6 P.C. 20' R. = L.P. STA. 1+87.98
- 7 S.Y.P.I. = L.P. STA. 1+93.05
- 8 N.W.P.I. = L.P. STA. 2+79.80
- 9 P.C. 65.58' R. + 50' R. = L.P. STA. 2+90.85
- 10 P.T. 50' R. = L.P. STA. 3+48.70 = P.G.L. STA. 2+61.10
- 11 P.C. 30' R. = STA. 0+54 CHESAPEAKE BAY COURT, 18' LT.
- 12 P.T. 30' R. = STA. 5+68.58 OCEANO AVE, 24' LT.
- 13 P.T. 20' R. = Prop Drive STA. 0+34.30, 37.50' LT.
- 14 LIMIT CONSTRUCTION = Prop Drive STA. 0+45.26, 37.50' LT.; T.C. ELEV. = 235.43
- 15 P.T. 65.58' R. + LIMIT CONSTRUCTION = Prop Dr. STA. 0+45.26, 37.50' LT.; T.C. ELEV. = 237.75

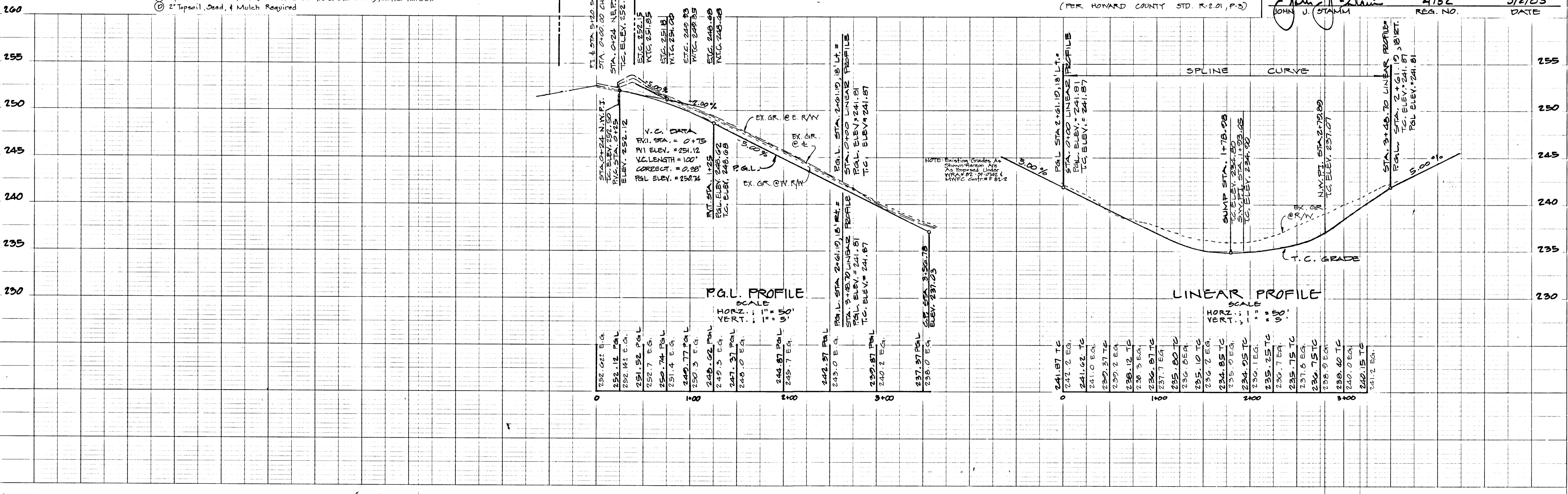


NOTE:
SEDIMENT CONTROL MEASURES FOR THIS CONTRACT WILL BE IMPLEMENTED IN ACCORDANCE WITH ARTICLE 15 OF THE SPECIFICATIONS AND AS PER SOP 83-108

APPROVED: Department of Public Works
 Chief, Bureau of Engineering
 APPROVED: Howard County Office of Planning And Zoning
 Chief Of Land Development And Zoning Administration

MARYLAND WHOLESALE FOOD CENTER
PLAN & PROFILE FOR CHESAPEAKE BAY COURT
 STATION 0+00 TO STATION 3+56.78
 (INTERSECTION OF OCEANO AVENUE & ASSATEAGUE DR.)
 HOWARD COUNTY, MD ELECTION DISTRICT #6
 SCALE: AS SHOWN SHEET 3 OF 3 DATE: DEC. 1982

ENGINEER
GEORGE W. STEPHENS, JR. & ASSOCIATES, INC.
 303 ALLEGHENY AVE. TOWSON, MARYLAND 21204
 301-825-8120



PLAN

DATE	
BY	
NO.	
NOTE BOOK	
NO.	
NO. OF WAY CHECKED	
NO. OF WAY CHECKED	
NO. OF WAY CHECKED	
NO. OF WAY CHECKED	

PROFILE

DATE	
BY	
NO.	
NOTE BOOK	
NO.	
NO. OF WAY CHECKED	
NO. OF WAY CHECKED	
NO. OF WAY CHECKED	
NO. OF WAY CHECKED	