

AS-BUILT SURVEY DATA BY
KENNETH A. McCORD, P.E. 1974;
SIGNED, SEALED & DATED 4/30/81

COLUMBIA

HOWARD COUNTY, MARYLAND
5TH ELECTION DISTRICT

ROAD CONSTRUCTION PLANS VILLAGE OF HICKORY RIDGE SECTION I AREA 6 LOTS C-135 THRU C-202 A RESUBDIVISION OF A PORTION OF PARCEL "C"

GENERAL NOTES

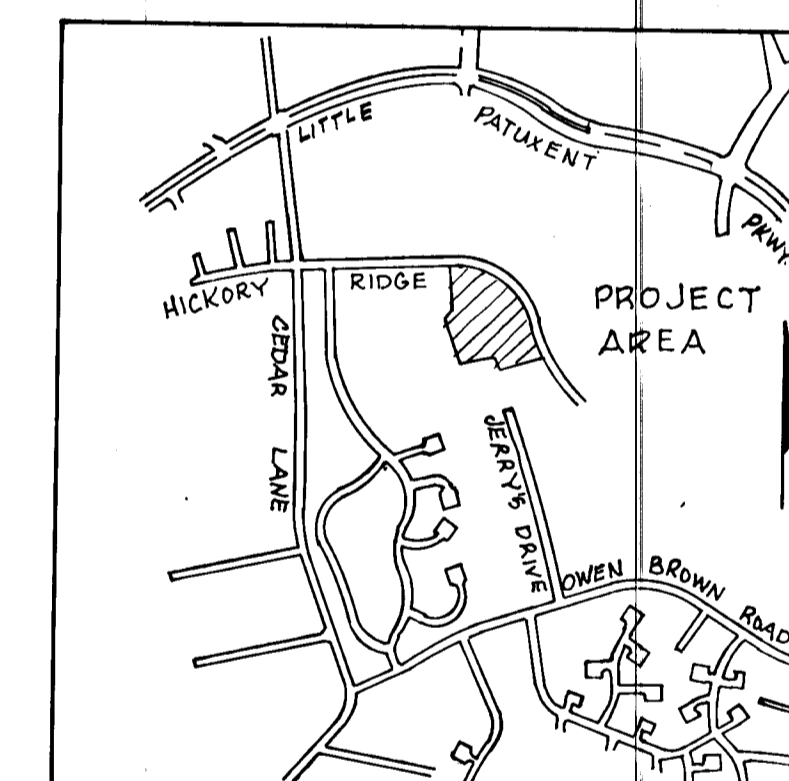
1. All work shall be done in accordance with Howard County Road Construction Code and Standard Specifications.
2. All utility companies must be notified 24 hours in advance of any construction.
3. Secondary residential streets are designed for 30 m.p.h. traffic speed in accordance with AASHTO standards.
4. All inlets shall be Howard County Standard unless otherwise shown. All "A" inlets shall be depressed.
5. Storm drain trenches within road rights-of-ways shall be backfilled and compacted in accordance with Howard County Road Code.
6. Any damage to public rights-of-ways or paving will be corrected at the developer's expense.

SHEET INDEX	
NO.	DESCRIPTION
1	TITLE SHEET
2	PLAN AND PROFILE
3	STANDARD DETAILS
4	STORM DRAIN PROFILES AND SPECIAL DETAILS
5	DRAINAGE AREA MAP

REFERENCES

VERTICAL: CROSS CUT IN BOLT ON FIRE HYDRANT 24" ± RIGHT OF & STA. 14+55 ± HICKORY RIDGE ROAD - ELEV. 448.09.
IRON PIPE 40" ± LEFT OF STORM DRAIN STRUCTURE 5-3 - ELEV. 422.61.

HORIZONTAL: PK NAIL IN CURB 22" ± RIGHT OF & STA. 14+65 ± HICKORY RIDGE ROAD N501689.61, E833516.13.
IRON PIPE 40" ± LEFT STORM DRAIN STRUCTURE 5-3 N501066.337, E.833485.13.



VICINITY MAP
Scale: 1" = 2,000'

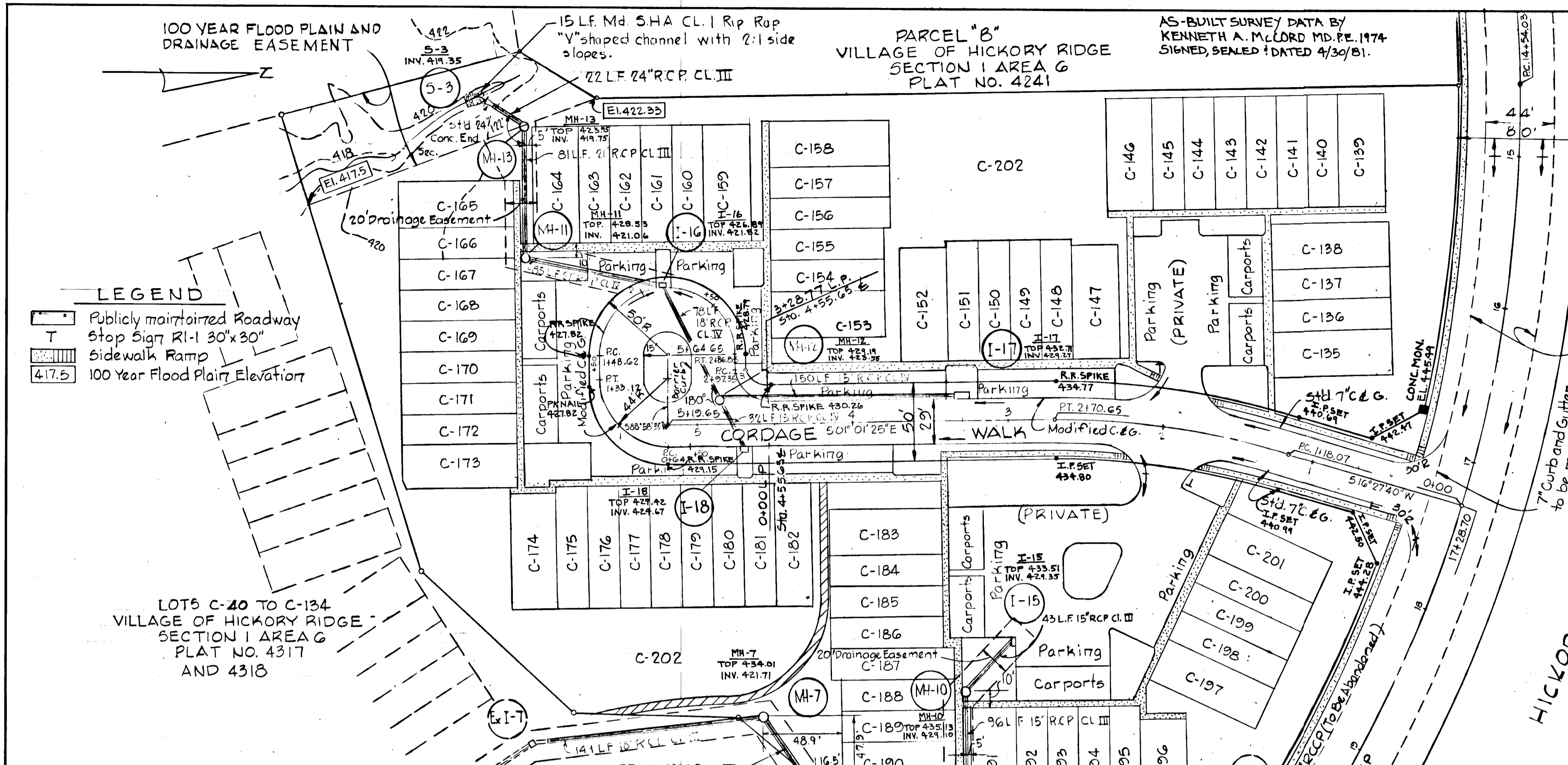
NOTE:
Sediment control structures required for road construction are shown on Parcel "C" - Lots C-1 thru C-39, Site Plans SDP 79-77C

DEPARTMENT OF PUBLIC WORKS
W.O. Palbert 10-8-79
CHIEF, BUREAU OF ENGINEERING DATE

OFFICE OF PLANNING AND ZONING
William P. ... 9-28-79
CHIEF, DIVISION OF LAND DEVELOPMENT DATE

DEVELOPER
HOWARD HOMES COMMUNITIES INC.
P.O. BOX 802
COLUMBIA, MARYLAND

WHITMAN, REQUARDT & ASSOCIATES
ENGINEERS
BALTIMORE, MARYLAND
Kenneth A. McCord
KENNETH A. McCORD
Registered Engineer
No. 1974

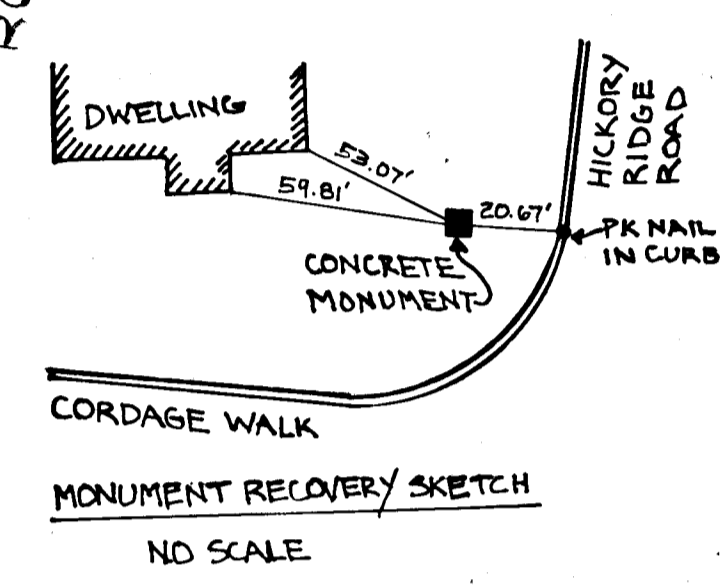


LINEAR PROFILE CURVE DATA

0+00 TO P.C. 0+64 60° 01' 25" E - 64.00'	P.C. 0+64 TO P.T. 1+33.12 Δ = 20° 00' 00" Tan = 44.00' R = 44.00' Chd = 62.22' Arc = 69.12' Chd Brg = 543° 55' 35" W
P.T. 1+33.12 TO P.C. 1+48.62 688° 58' 35" W - 15.50'	P.C. 1+48.62 TO P.T. 2+86.85 Δ = 180° 00' 00" R = 44.00' Arc = 138.23'
P.T. 2+86.85 TO P.C. 2+97.35 N 88° 58' 35" E - 10.50'	P.C. 2+97.35 TO P.T. 3+28.77 Δ = 90° 00' 00" Tan = 20.00' R = 20.00' Chd = 28.28' Arc = 31.42' Chd Brg = N 43° 58' 35" E

CURVE DATA

P.C. 1+18.07 TO P.T. 2+70.65 Δ = 17° 29' 04" Tan = 76.65' R = 500.00' Chd = 151.99' Arc = 152.58' Chd Brg = 607° 43' 07" W



Rev. Date Rev. No. Revision Description

COLUMBIA
 5TH ELECTION DISTRICT
 HOWARD COUNTY, MARYLAND

OWNER AND DEVELOPER
 HOWARD HOMES COMMUNITIES, INC.

PROJECT AREA
 VILLAGE OF HICKORY RIDGE
 SECTION 1 AREA G LOTS C-135 TO C-202
 A RESUBDIVISION OF A PORTION OF PARCEL C

PROJECT TITLE
 PLAN & PROFILE
 CORDAGE WALK

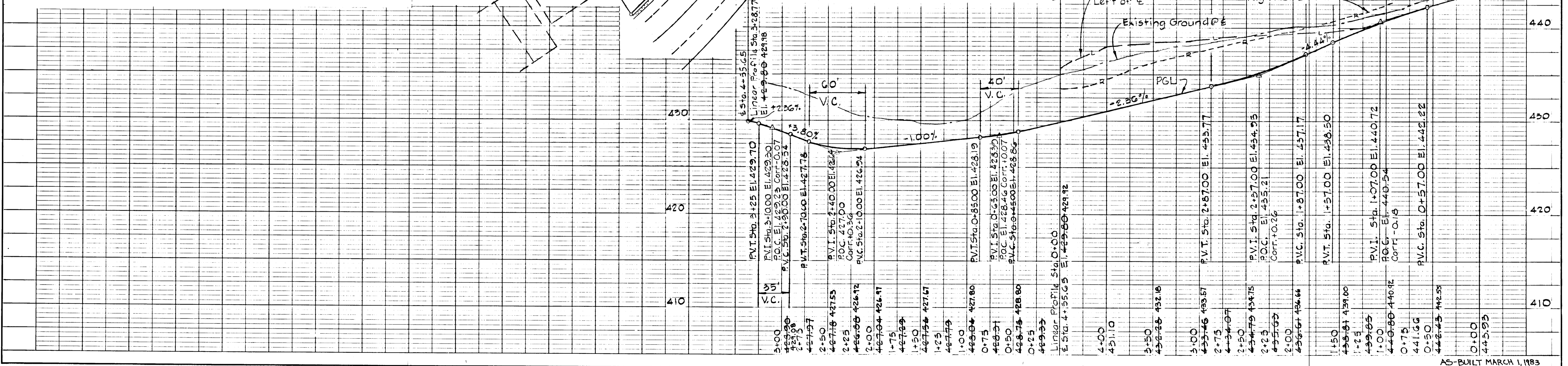
SCALE: AS SHOWN DATE

WHITMAN, REQUARDT & ASSOCIATES
 ENGINEERS
 BALTIMORE, MARYLAND 21202

Kenneth A. McCord
 KENNETH A. McCORD
 Registered Engineer
 No. 1974

STORM DRAIN STRUCTURE SCHEDULE

NO.	TYPE	TOP ELEV.	INV. IN.	INV. OUT.	LOCATION
I-0	Type 'D' Inlet (2.5' x 2.5')	429.25	425.12	442.44	See Plan & Profile
I-1	Type 'D' Inlet (2.5' x 2.5')	421.33	426.20	426.10	See Plan & Profile
I-15	A-5 Inlet (width 2.5')	423.54	421.59	421.59	See Plan & Profile
I-16	A-5 Inlet (width 2.5')	426.76	421.74	421.74	12.75' back of LP Sta. 2+22.50
I-17	A-10 Inlet (width 2.5')	428.72	421.72	421.72	15.75' Right of C. Sta. 3+30.26
I-18	A-5 Inlet (width 2.5')	421.85	421.74	421.74	12.75' Left of C. Sta. 4+74.06
MH-7	Standard Manhole	425.00	421.74	421.74	See Plan & Profile
MH-8	Standard Manhole	421.60	423.24	423.24	See Plan & Profile
MH-9	Standard Manhole	421.60	421.64	421.64	See Plan & Profile
MH-10	Standard Manhole	422.74	421.00	421.00	See Plan & Profile
MH-11	Standard Manhole	422.74	421.00	421.00	See Plan & Profile
MH-12	Standard Manhole	422.80	421.52	421.52	See Plan & Profile
MH-13	Typ 'B' MH (For detail see 515)	423.50	421.70	421.70	See Plan & Profile
S-3	Std. 64" Conc. Eng. Section	-	-	429.25	See Plan & Profile



DATE

BY

REVISIONS

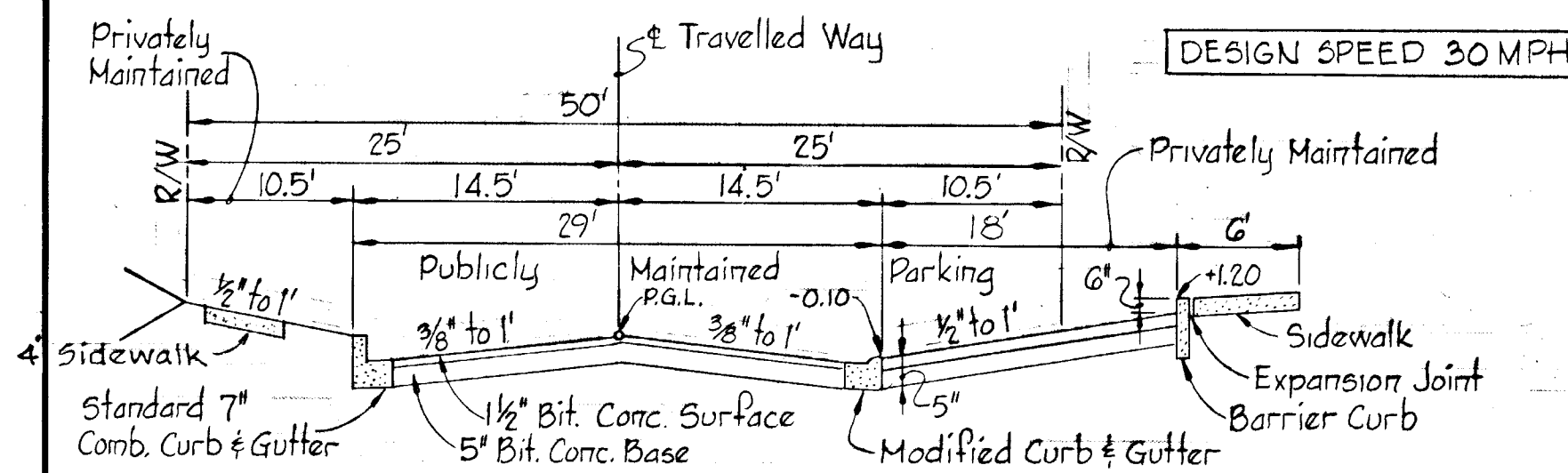
NO.

DATE

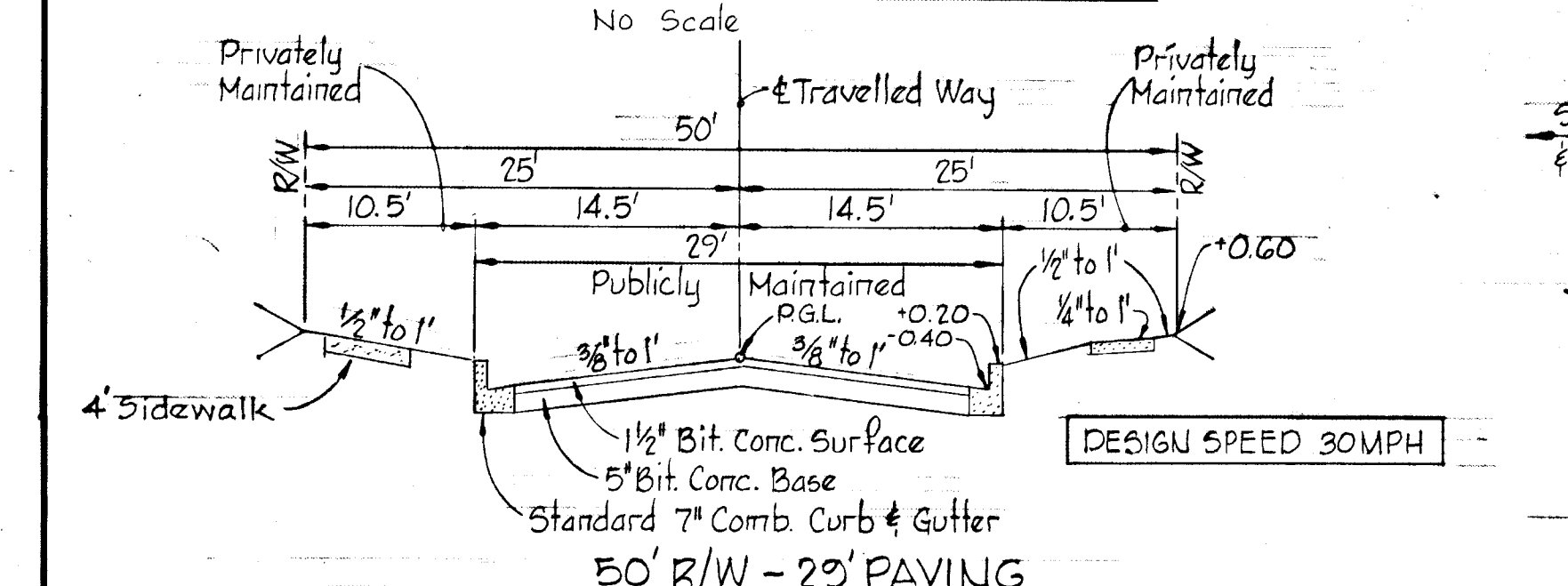
BY

REVISIONS

NO.



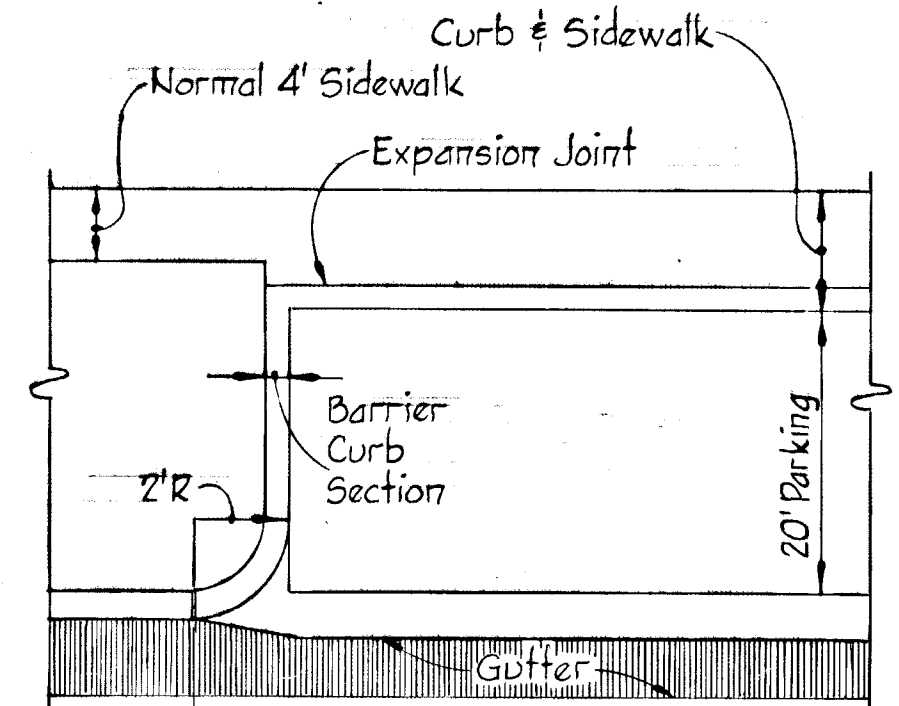
PARKING ADJACENT TO 29' PAVING



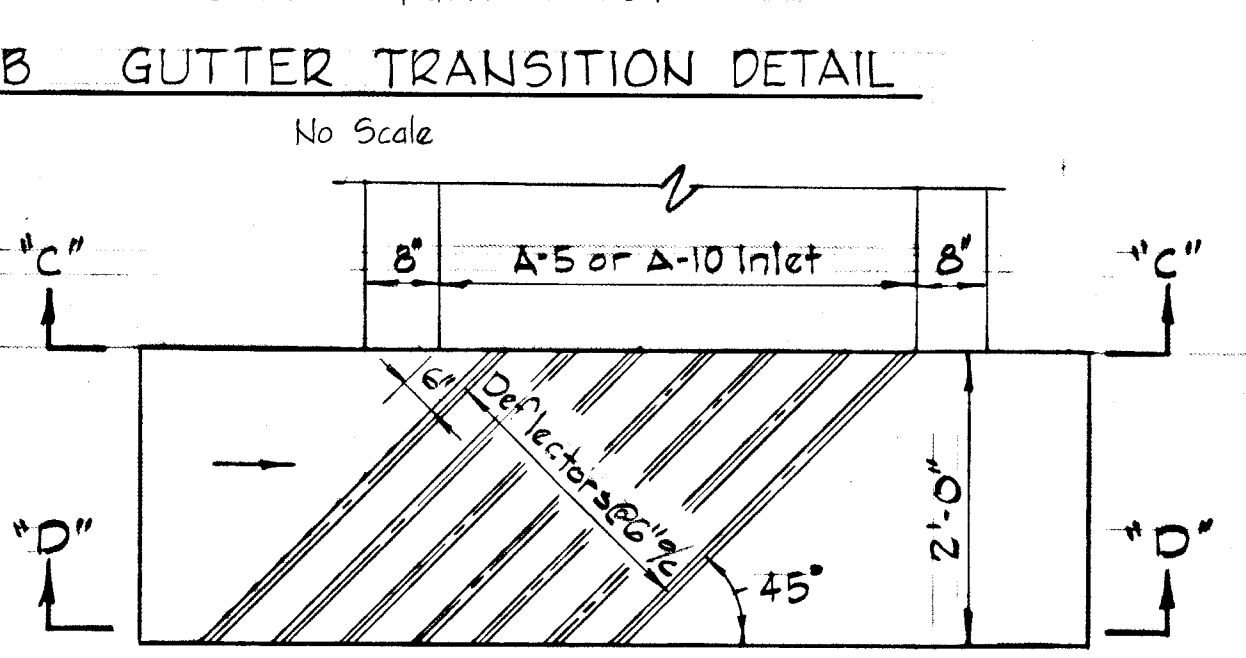
TYPICAL SECTIONS - CORDAGE WALK - STA. 0+22 TO STA. 5+64

NOTES:

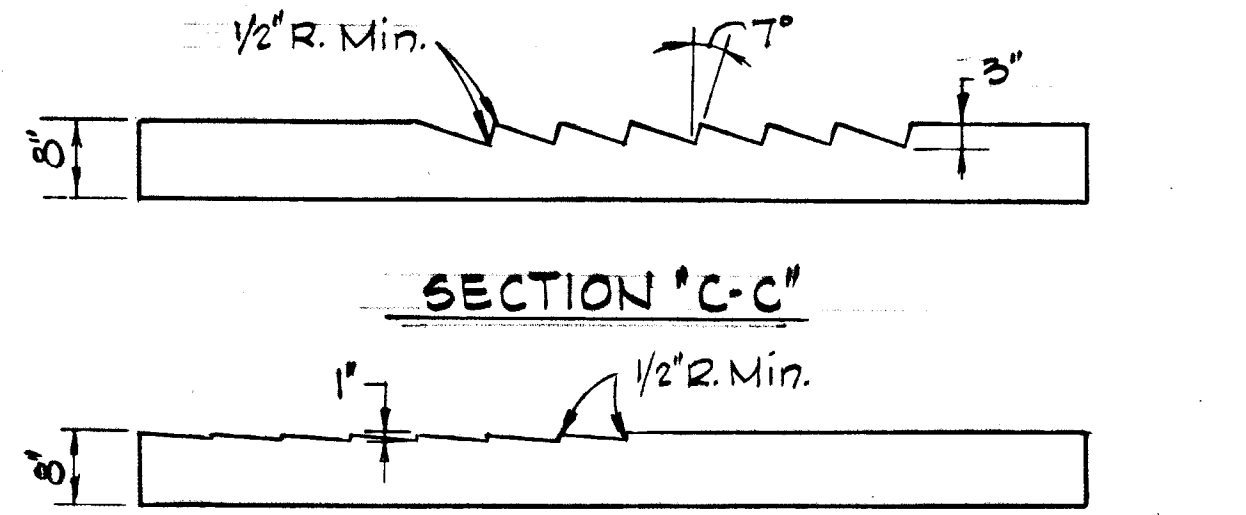
- Standard 7" Comb. and Modified Curb and Gutter shall be in accordance with County Standard D-40, Page 95.
- Paving (6 1/2") shall be in accordance with County Standard D-11, Page 66.
- Transition from Standard 7" Comb. Curb and Gutter to Modified Curb and Gutter shall be in accordance with detail shown on this sheet.
- Tack Coat is required in accordance with Section C-31-4 of the Howard County Road Construction Code and Standard Spec.
- Base will be primed in accordance with C-30-3 as provided in the Howard County Road Construction Code and Standard Spec.
- Paving (5") shall be in accordance with County Standard D-13, Page 68.
- Sidewalks shall be in accordance with County Standard D-14, Page 69.
- All material and construction methods shall be in accordance with the Howard County Road Construction Code.



CURB GUTTER TRANSITION DETAIL



DEFLECTOR DETAIL

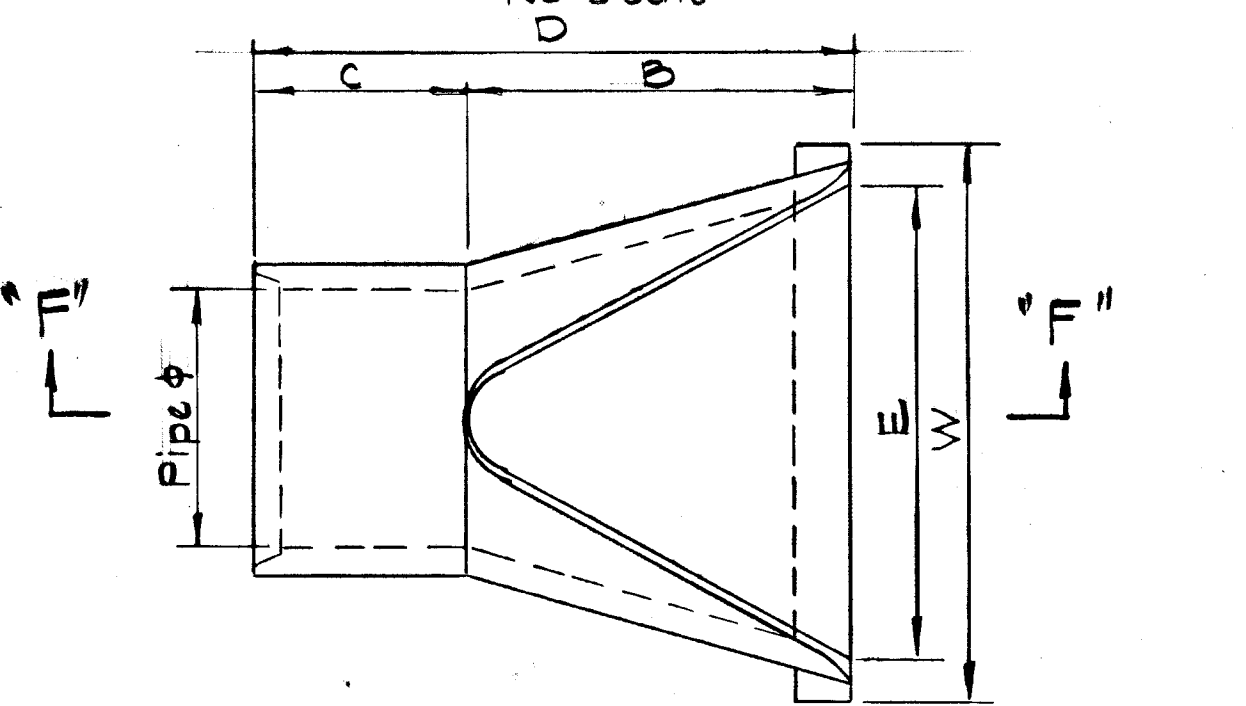


SECTION 'C-C'

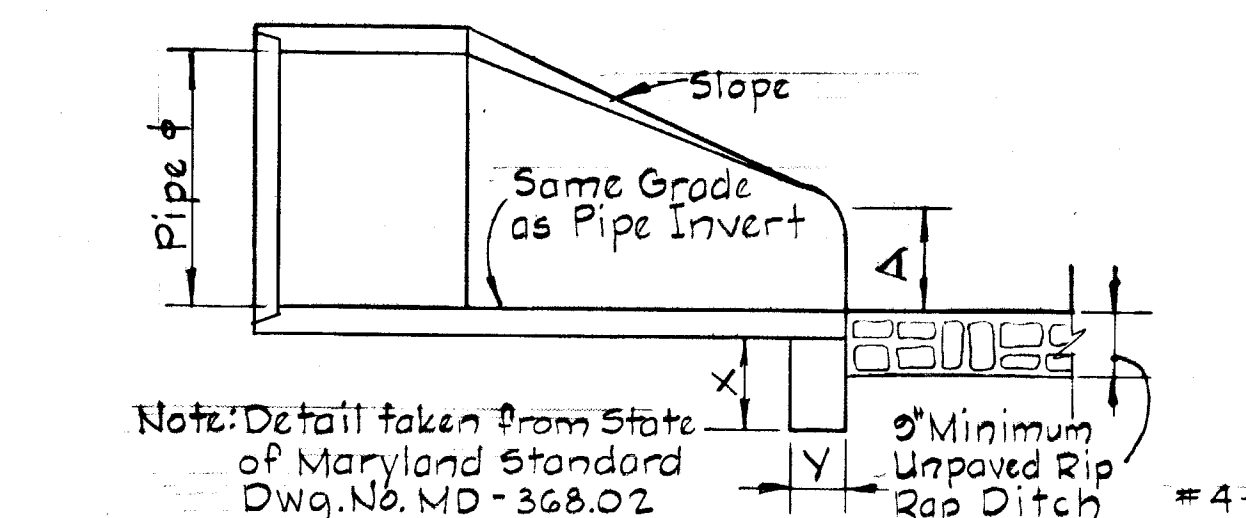


SECTION 'D-D'

DEFLECTOR DETAIL



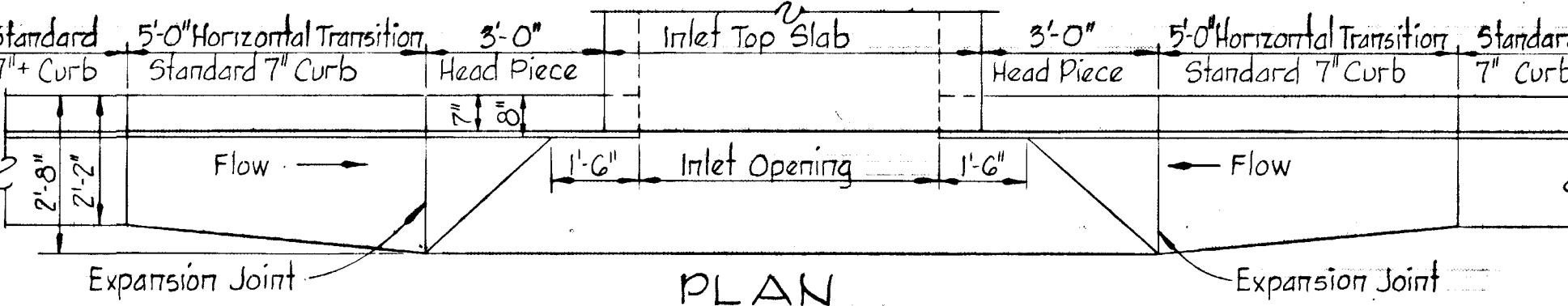
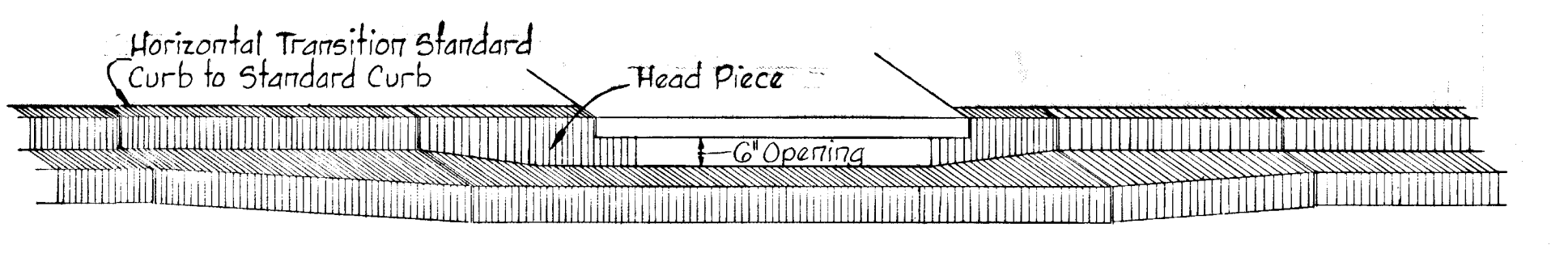
CONCRETE END SECTION DETAIL



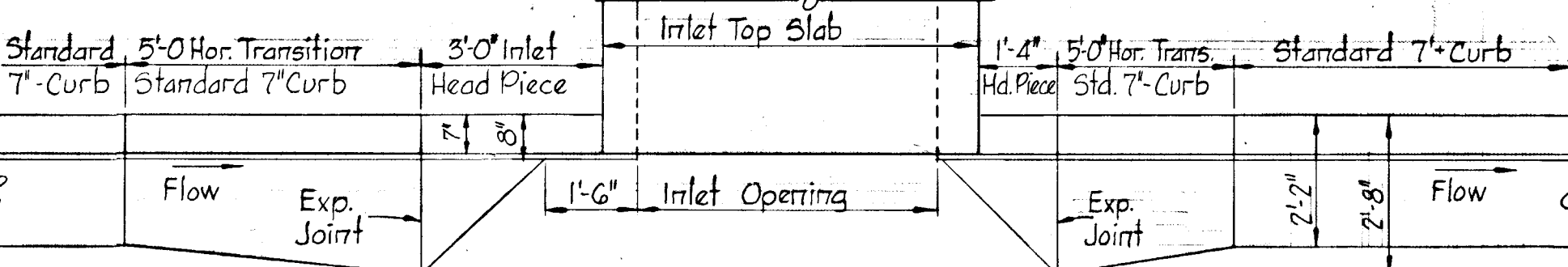
SECTION 'F-F'

PIPE	SLOPE	A	B	C	D	E	W	X	Y
18"	3:1	0'	2'-3"	3'-10"	6'-11"	3'-0"	4'-0"	12"	0"
24"	3:1	0 1/2"	3'-7 1/2"	2'-6"	6'-11 1/2"	4'-0"	5'-0"	13"	0"
30"	3:1	1'-0"	4'-6"	1'-7 1/2"	6'-1 1/2"	5'-0"	6'-0"	15"	0"
36"	3:1	1'-3"	5'-3"	2'-10 1/2"	8'-1 1/2"	6'-0"	7'-3"	15"	0"

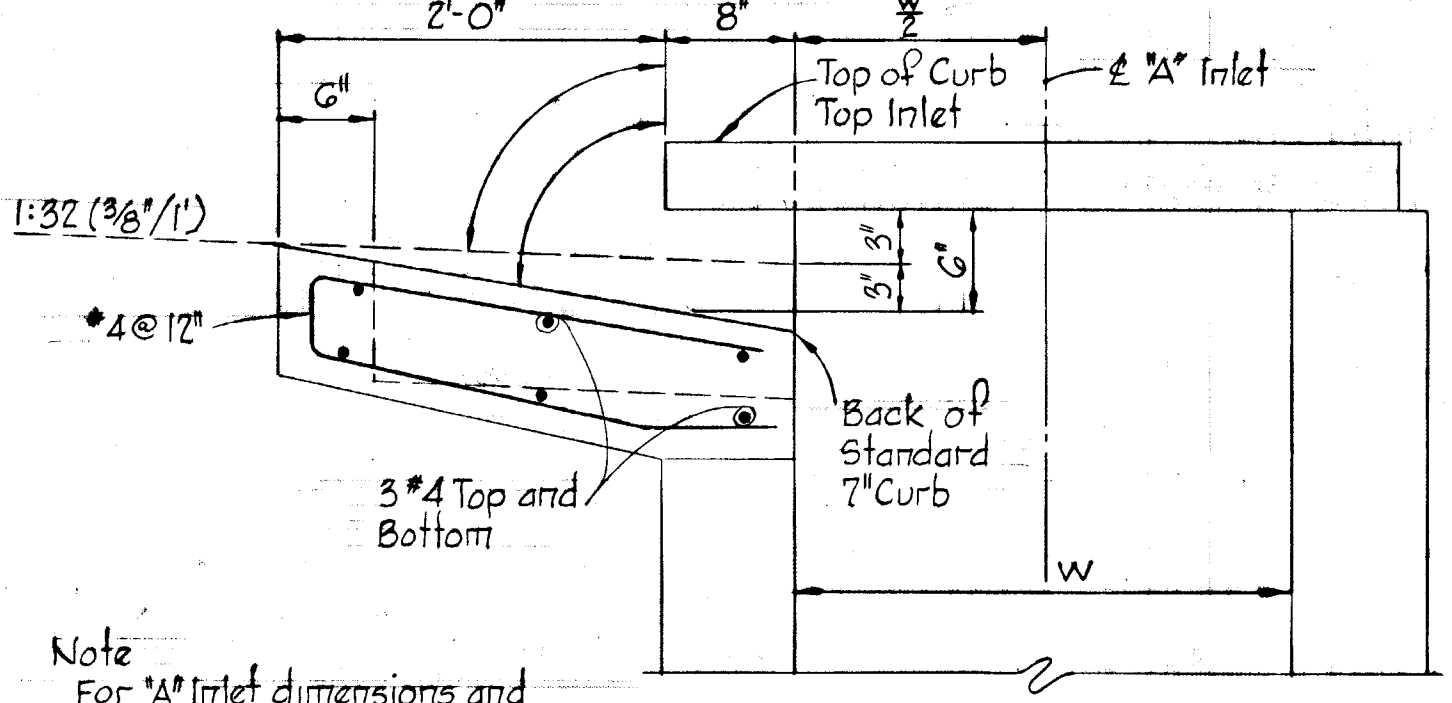
CONCRETE END SECTION DETAIL



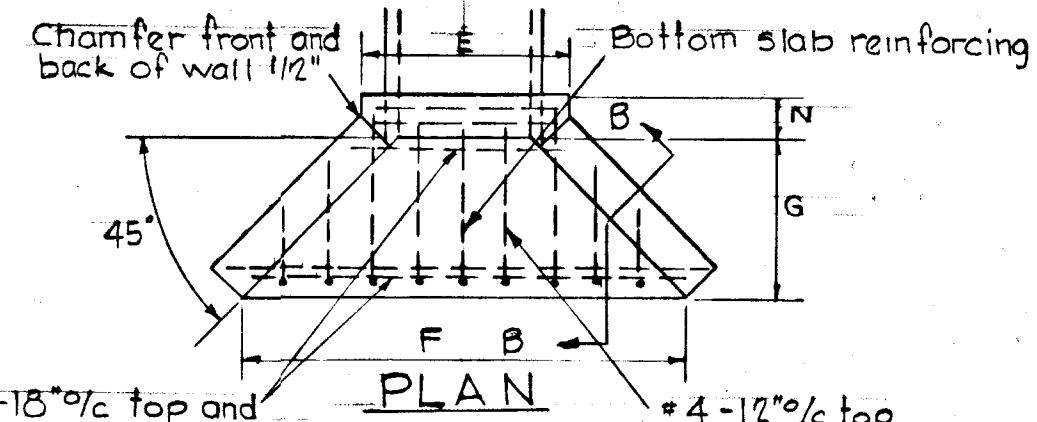
SECTION ALONG FLOW LINE
 SUMPED 'A' INLETS - STANDARD CURB



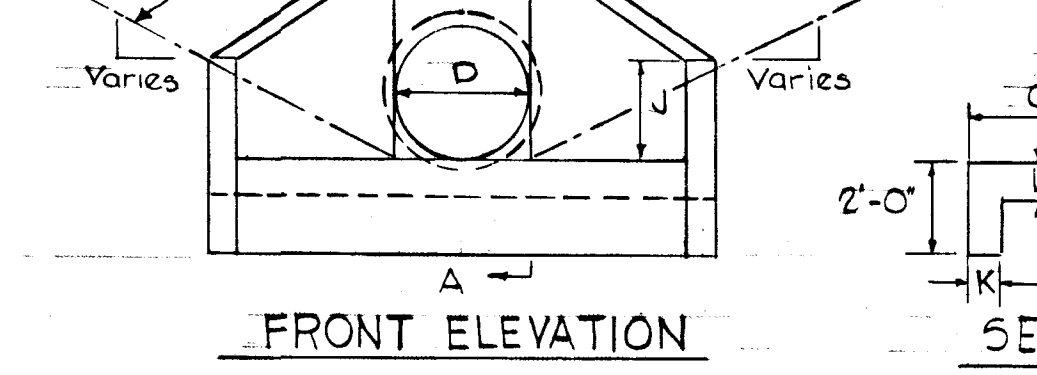
SECTION ALONG FLOW LINE
 'A' INLETS - STANDARD CURB



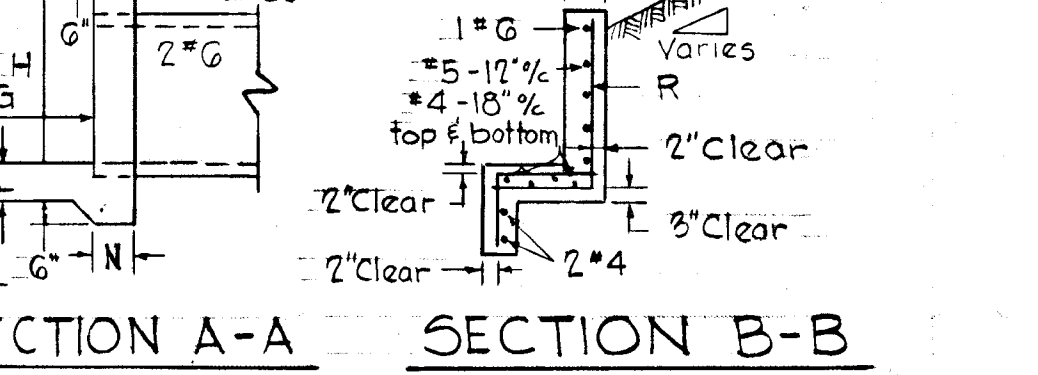
SECTION 'A' INLET STANDARD CURB



FRONT ELEVATION

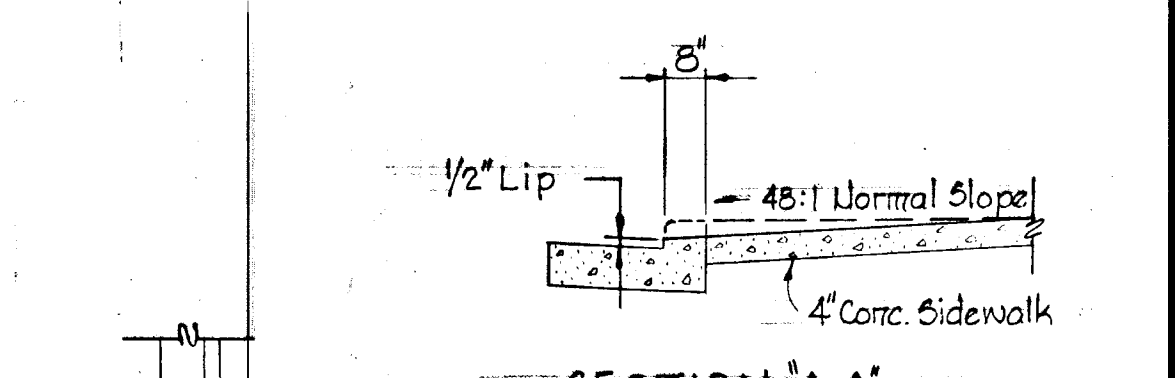


SECTION A-A

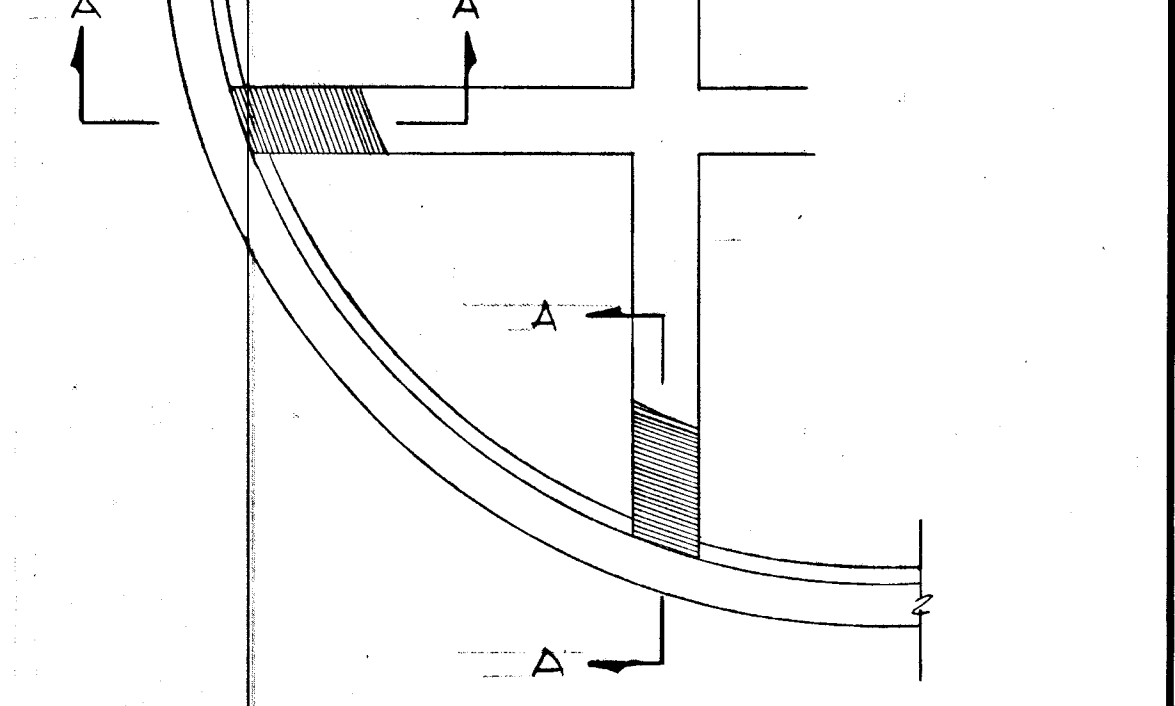


SECTION B-B

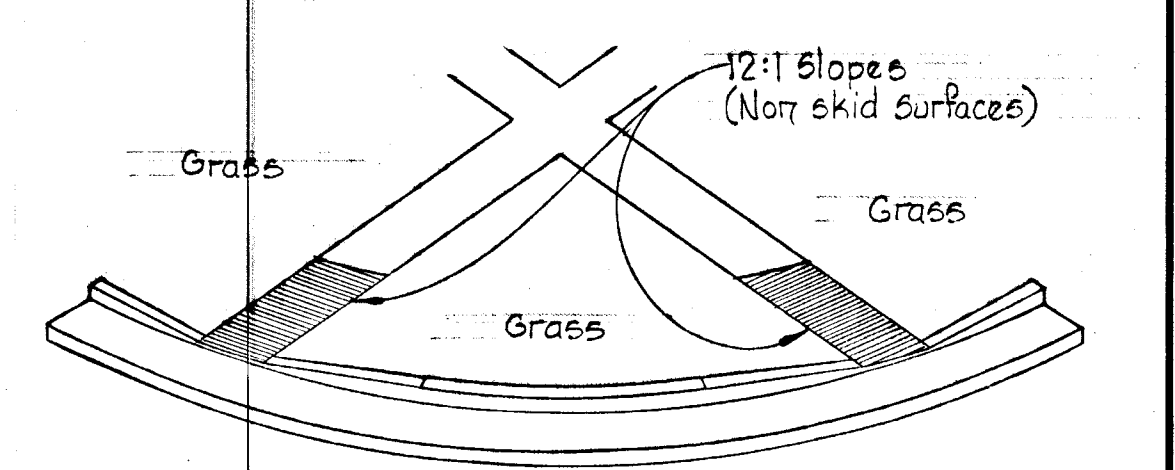
TYPE 'A' HEADWALL



SECTION 'A-A'

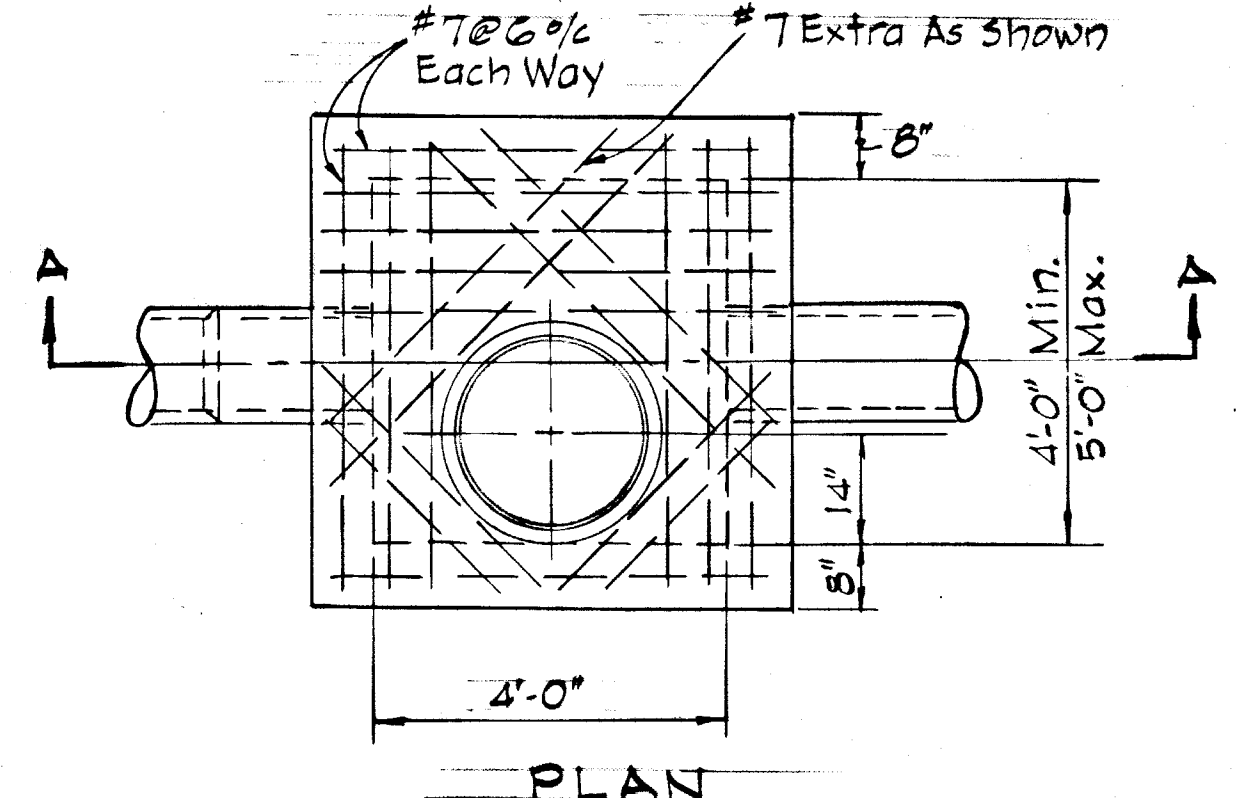


PLAN

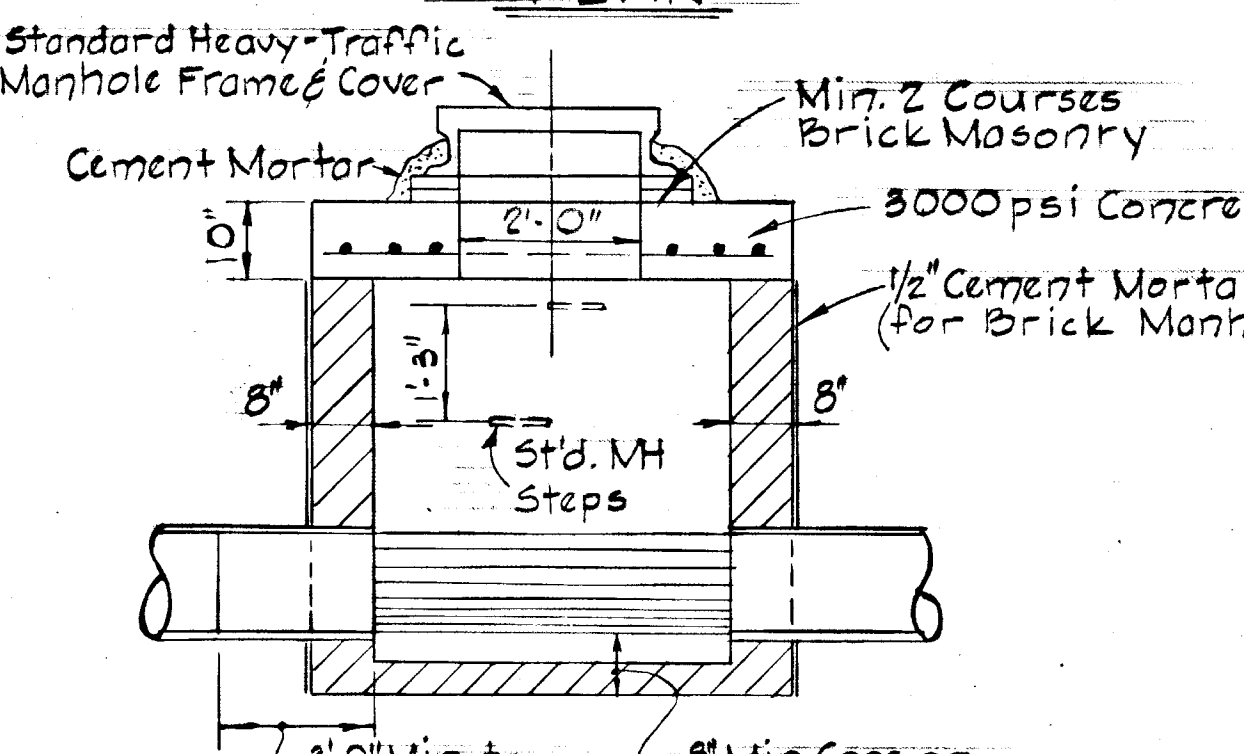


ISOMETRIC VIEW

SIDEWALK RAMP



PLAN



SECTION A-A

TYPE 'B' MANHOLE

D	E	F	G	H	J	K	L	N	R
18"	3'-0"	7'-6"	3'-0"	2'-0"	8"	8"	8"	#5-12"	
24"	3'-4"	7'-6"	3'-3"	2'-0"	8"	8"	8"	#5-12"	
30"	4'-2"	8'-6"	3'-3"	2'-0"	8"	8"	8"	#5-12"	
36"	4'-8"	10'-0"	3'-6"	4'-6"	8"	10"	10"	#5-12"	
42"	5'-3"	11'-6"	4'-0"	5'-0"	8"	10"	10"	#5-12"	
48"	5'-0"	13'-0"	4'-6"	5'-6"	8"	10"	12"	#5-12"	
54"	6'-5"	14'-6"	5'-0"	6'-0"	8"	12"	12"	#6-8"	

Rev. Date	Rev. No.	Revision Description
3/12/79	1	As per D.P.W. Comments

COLUMBIA
 5TH ELECTION DISTRICT
 HOWARD COUNTY, MARYLAND
 OWNER AND DEVELOPER
 HOWARD HOMES COMMUNITIES, INC.

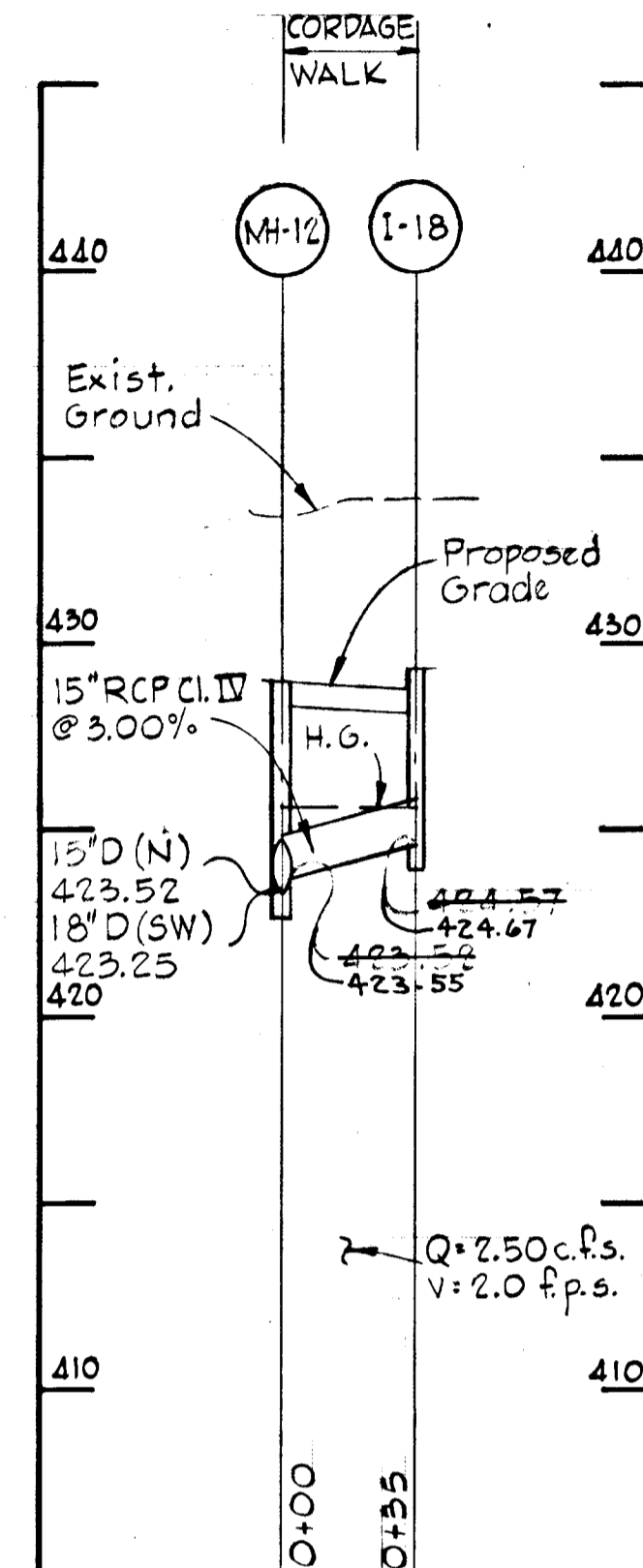
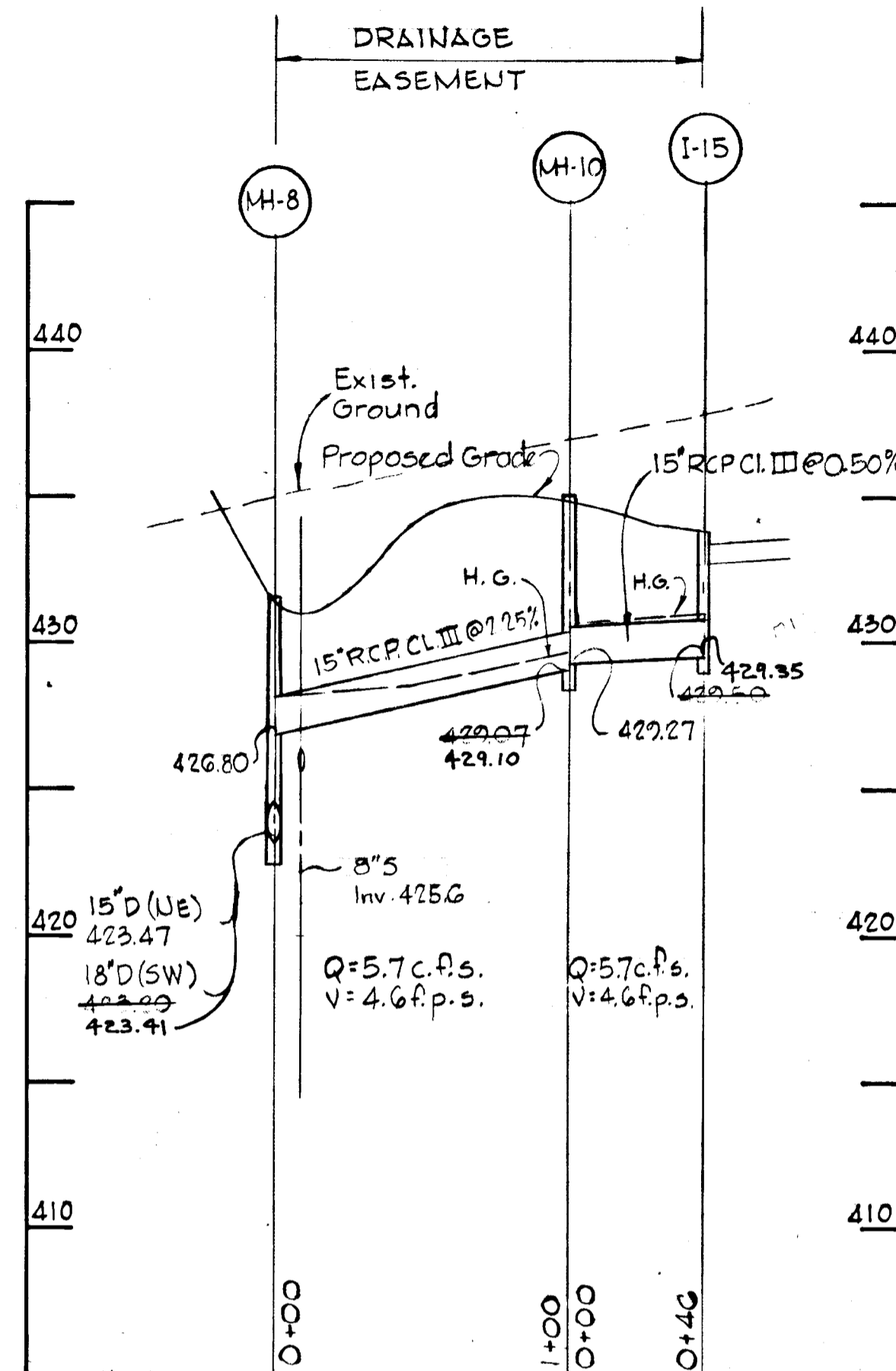
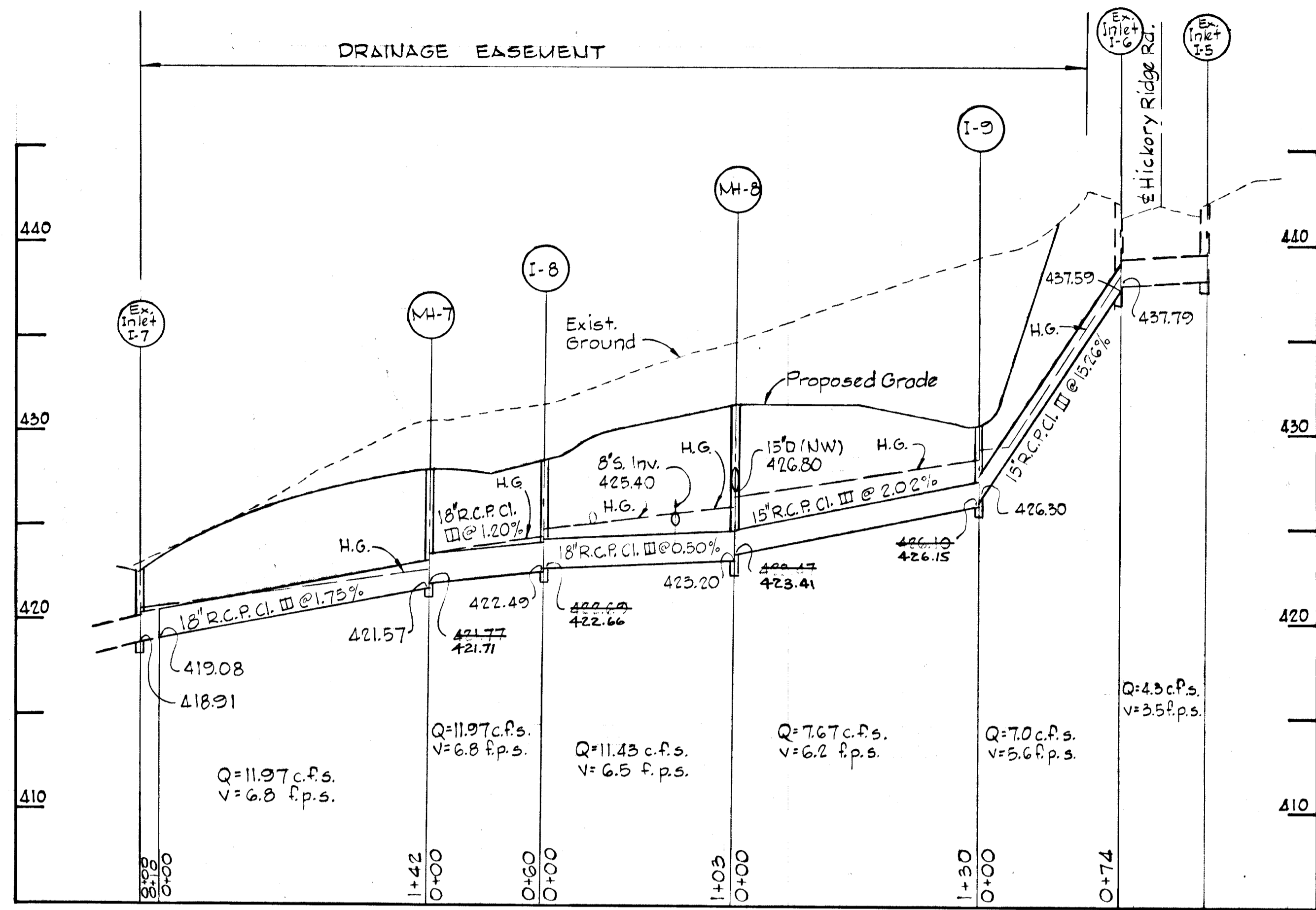
PROJECT AREA
 VILLAGE OF HICKORY RIDGE
 SECTION 1 AREA G LOTS C-135 TO C-202
 A RESUBDIVISION OF A PORTION OF PARCEL 'C'

PROJECT TITLE
 STANDARD DETAILS

SCALE: AS SHOWN DATE

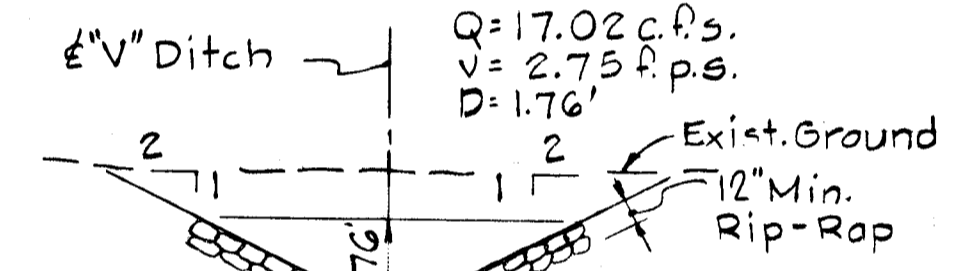
WHITMAN, REQUARDT & ASSOCIATES
 ENGINEERS
 BALTIMORE, MARYLAND 21202

Kenneth A. McCord
 KENNETH A. MCCORD
 Registered Engineer
 No. 1974

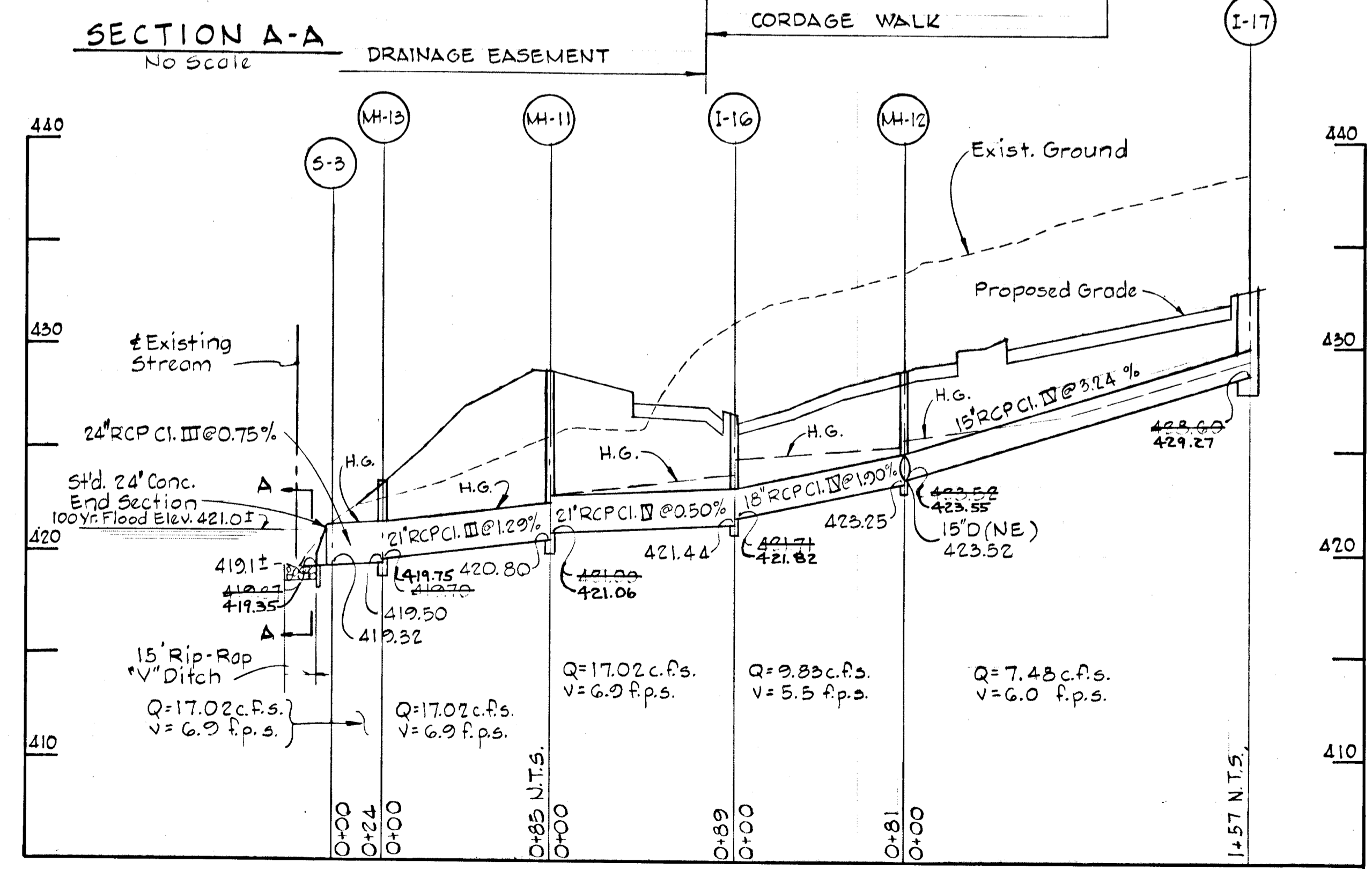


NOTE:
 The approved Storm Water Management Pond, which has been constructed just off the southwest corner of the property, satisfies all sediment control and storm water management requirements for this section. See Sheets 4 and 5 of 7, SDP 79-77. For stabilization of disturbed areas and flushing of storm drains, see sheet 5 of 7 SDP 79-77.

AS-BUILT SURVEY DATA BY
 KENNETH A. MCCORD, MD. P.E. 1974;
 SIGNED, SEALED & DATED 4/29/81.



PROFILES
 Scale: Hor. 1"=50'
 Ver. 1"=5'



REVIEWED FOR Howard S.C.D.

AND MEETS TECHNICAL REQUIREMENTS

James M. Hahn DATE 9/28/79

U.S. SOIL CONSERVATION SERVICE

THIS DEVELOPMENT PLAN IS APPROVED FOR SOIL EROSION AND SEDIMENT CONTROL BY THE HOWARD SOIL CONSERVATION DISTRICT.

APPROVED William T. Rowe
 HOWARD S.C.D.

DATE 9-28-79

REV. DATE	REV. NO.	REVISION DESCRIPTION
COLUMBIA 5TH. ELECTION DISTRICT HOWARD COUNTY, MARYLAND OWNER AND DEVELOPER HOWARD HOMES COMMUNITIES, INC. PROJECT AREA: VILLAGE OF HICKORY RIDGE SECTION I AREA G LOTS C-135 THRU C-202 A RESUBDIVISION OF A PORTION OF PARCEL "C" PROJECT TITLE: STORM DRAIN PROFILES SCALE: AS SHOWN DATE: WHITMAN, REQUARDT AND ASSOCIATES ENGINEERS BALTIMORE, MARYLAND 21202 <i>Kenneth A. McCord</i> KENNETH A. MCCORD REGISTERED ENGINEER NO. 1974		

