

AS-BUILT SURVEY DATA BY
KENNETH A. McCORD P.D. PE. 1974
SIGNED, SEALED & DATED APRIL 14, 1980.

COLUMBIA

HOWARD COUNTY, MARYLAND
5TH ELECTION DISTRICT

ROAD CONSTRUCTION PLANS VILLAGE OF HICKORY RIDGE SECTION 1 AREA 6 LOTS C 40 THRU C 134 A RESUBDIVISION OF A PORTION OF PARCEL "C"

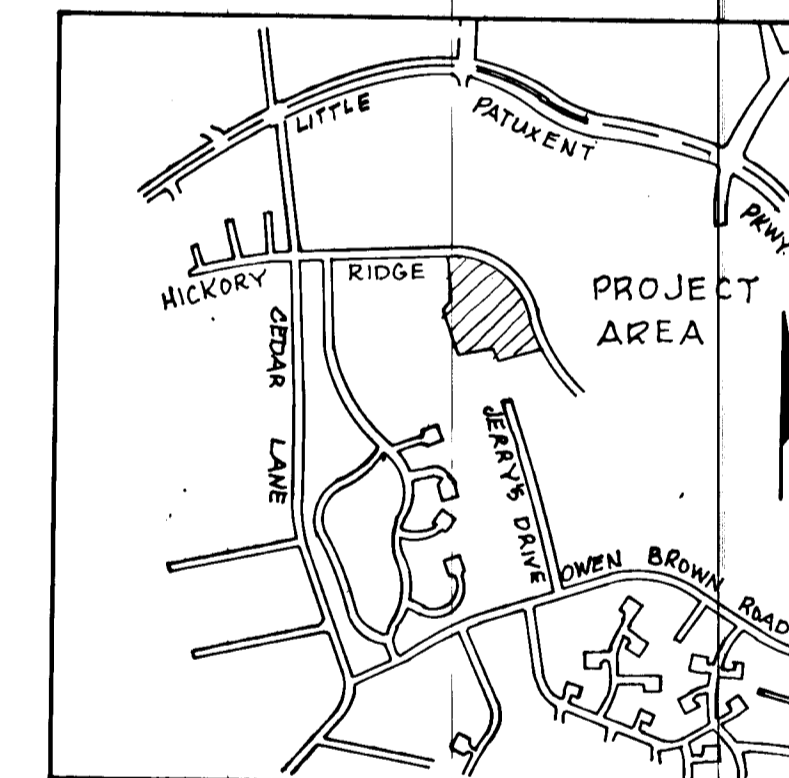
GENERAL NOTES

1. All work shall be done in accordance with Howard County Road Construction Code and Standard Specifications.
2. All utility companies must be notified 24 hours in advance of any construction.
3. Secondary residential streets are designed for 30 m.p.h. traffic speed in accordance with AASHTO Standards.
4. All inlets shall be Howard County Standard unless otherwise shown. All "A" inlets shall be depressed.
5. Storm drain trenches within road rights-of-ways shall be backfilled and compacted in accordance with Howard County Road Code.
6. Any damage to public rights-of-ways or paving will be corrected at the developer's expense.

| SHEET INDEX | |
|-------------|--|
| NO. | DESCRIPTION |
| 1 | TITLE SHEET |
| 2 | PLAN AND PROFILE |
| 3 | STANDARD DETAILS |
| 4 | STORM DRAIN PROFILES AND SPECIAL DETAILS |
| 5 | DRAINAGE AREA MAP |

REFERENCES

VERTICAL: RR SPIKE IN 2" MAPLE 60'± RIGHT OF C. STA. 30+70±
HICKORY RIDGE ROAD - ELEV. 416.35'
RR SPIKE IN 6" OAK 130'± RIGHT OF C. STA. 4+20±
HIGH BEAM COURT - ELEV. 427.36'
HORIZONTAL: IRON PIPE 305'± SOUTHEAST OF HIGH BEAM COURT
CUL-DE-SAC CENTER POINT N500556.163, E 833955.438
IRON PIPE 240'± SOUTHWEST OF HIGH BEAM COURT
CUL-DE-SAC CENTER POINT N500661.607, E 833619.700



VICINITY MAP
Scale: 1" = 2,000'

NOTE:
Sediment control structures required for road construction are shown on Parcel "C" - Lots C-1 thru C-39, Site Plans SDP 79-77C.

DEPARTMENT OF PUBLIC WORKS
W. J. [Signature] 5-22-79
CHIEF, BUREAU OF ENGINEERING DATE
OFFICE OF PLANNING AND ZONING
[Signature] 5-18-79
CHIEF, DIVISION OF LAND DEVELOPMENT DATE

DEVELOPER
HOWARD HOMES COMMUNITIES INC.
P.O. BOX 802
COLUMBIA, MARYLAND

WHITMAN, REQUARDT & ASSOCIATES
ENGINEERS
BALTIMORE, MARYLAND
[Signature]
KENNETH A. McCORD
Registered Engineer
No. 1974

AS-BUILT SURVEY DATA BY
KENNETH A. McCORD MD.P.E. 1974
SIGNED, SEALED & DATED 4/11/83

LEGEND
 Publicly Maintained Roadway
 Stop Sign R1-130"x30"
 Sidewalk Ramp
 100 Year Flood Plain Elev.

REMAINDER OF PARCEL "C"
VILLAGE OF HICKORY RIDGE
SECTION 6 AREA 1
PLAT NO. 4242

NOTE
For Hickory Ridge Road profile and storm drains, see Road Construction Drawings for the Village of Hickory Ridge Section 1, Area 6, dated 6/30/78 by Purdum and Jeschke.

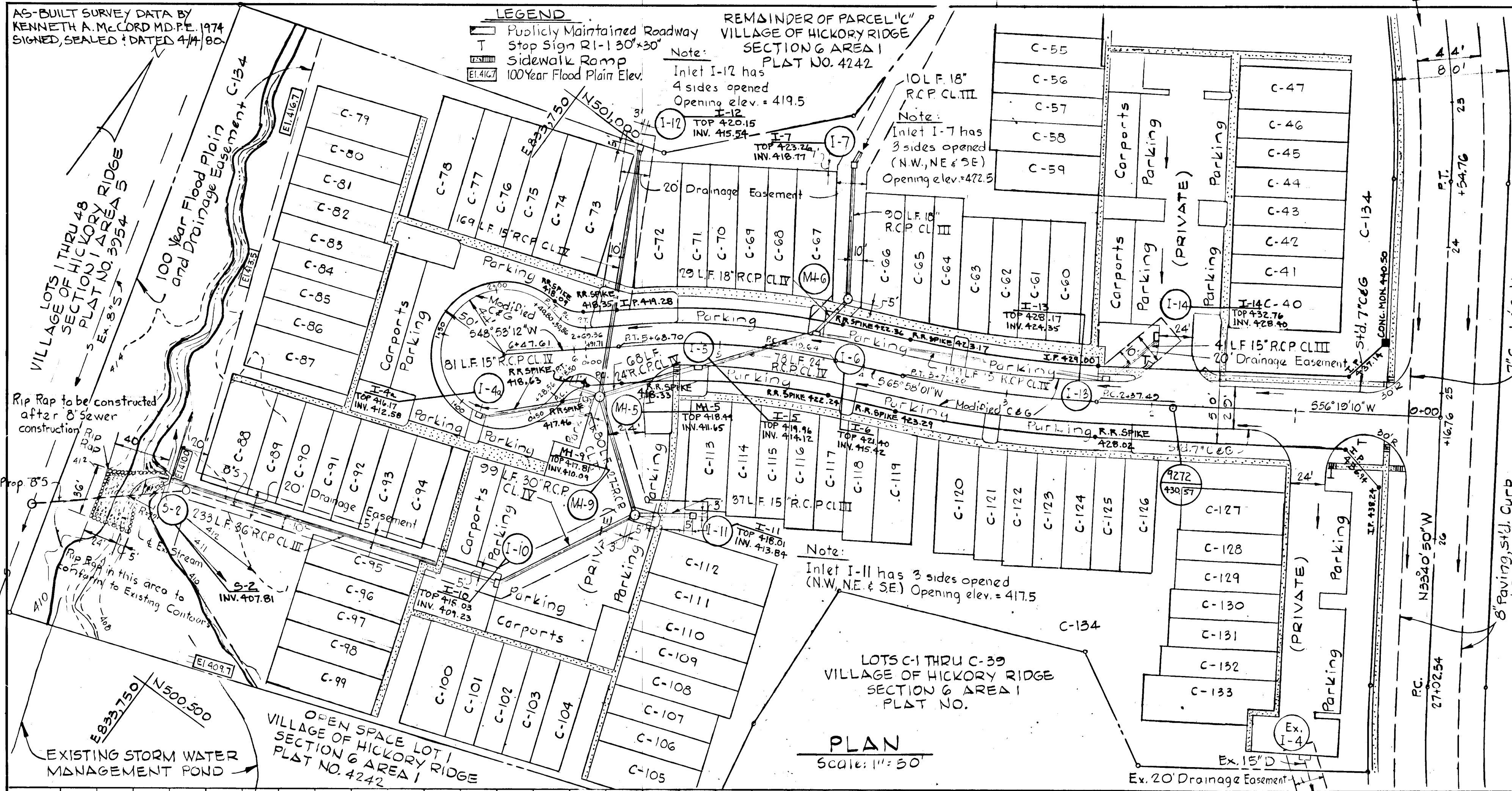
DEPARTMENT OF PUBLIC WORKS
W.O. Albert 5-22-79
 CHIEF BUREAU OF ENGINEERING DATE
 OFFICE/OF PLANNING & ZONING
John W. Mudderman 5-18-79
 CHIEF, DIVISION OF LAND DEVELOPMENT DATE

LINEAR PROFILE CURVE DATA

| | |
|---------------------------------|------------------------------|
| P.C. 0+00 TO P.T. 0+18.50 | P.C. 0+28.56 TO P.T. 2+40.80 |
| $\Delta = 48' 11.23"$ | $\Delta = 276' 22.26"$ |
| $R = 22.00'$ | $R = 44.00'$ |
| $\text{Arc} = 18.50'$ | $\text{Arc} = 212.24'$ |
| $\text{Tan} = 9.84'$ | |
| $\text{Chd.} = 17.96'$ | |
| $\text{Chd. Brg.} = S24-47-31W$ | |

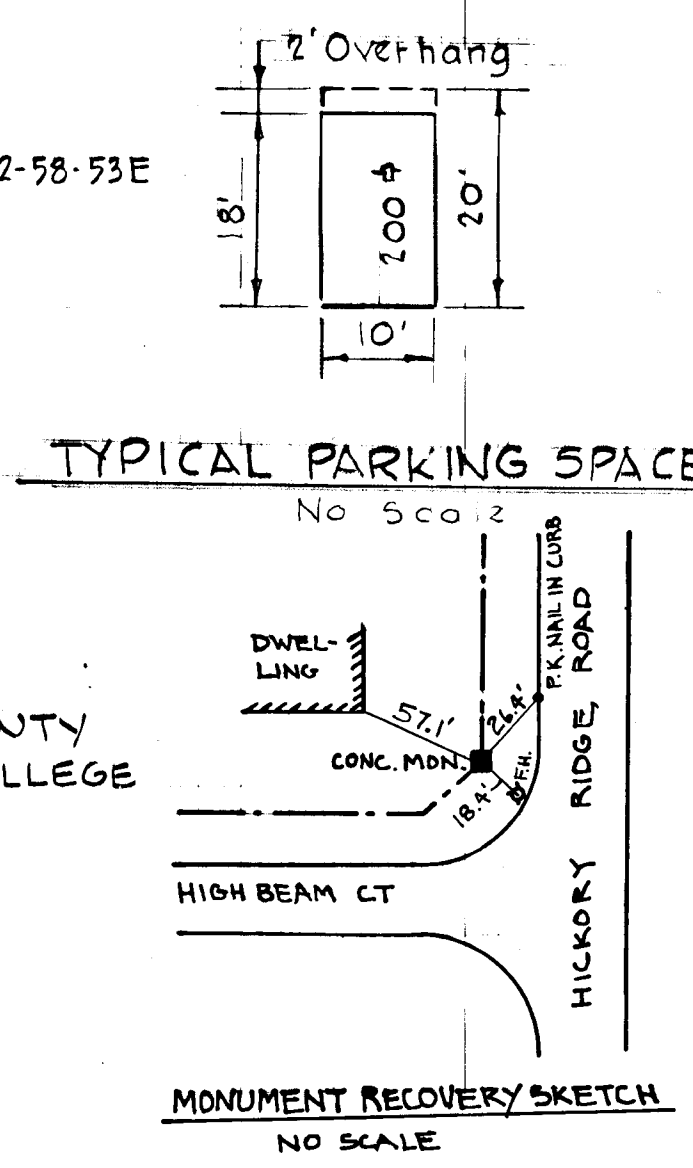
CURVE DATA

| | |
|----------------------------------|----------------------------------|
| P.C. 2+37.49 TO P.T. 5+72.20 | P.C. 4+19.64 TO P.T. 5+68.70 |
| $\Delta = 90' 58' 52"$ | $\Delta = 17' 04' 50"$ |
| $R = 800.00'$ | $R = 500.00'$ |
| $\text{Arc} = 134.71'$ | $\text{Arc} = 140.06'$ |
| $\text{Tan} = 67.51'$ | $\text{Tan} = 75.09'$ |
| $\text{Chd.} = 134.55'$ | $\text{Chd.} = 148.51'$ |
| $\text{Chd. Brg.} = S61'08'30"W$ | $\text{Chd. Brg.} = S57'25'36"W$ |



HICKORY RIDGE ROAD
 7" Curbed Gutter and Gutter (by Others) to be Removed

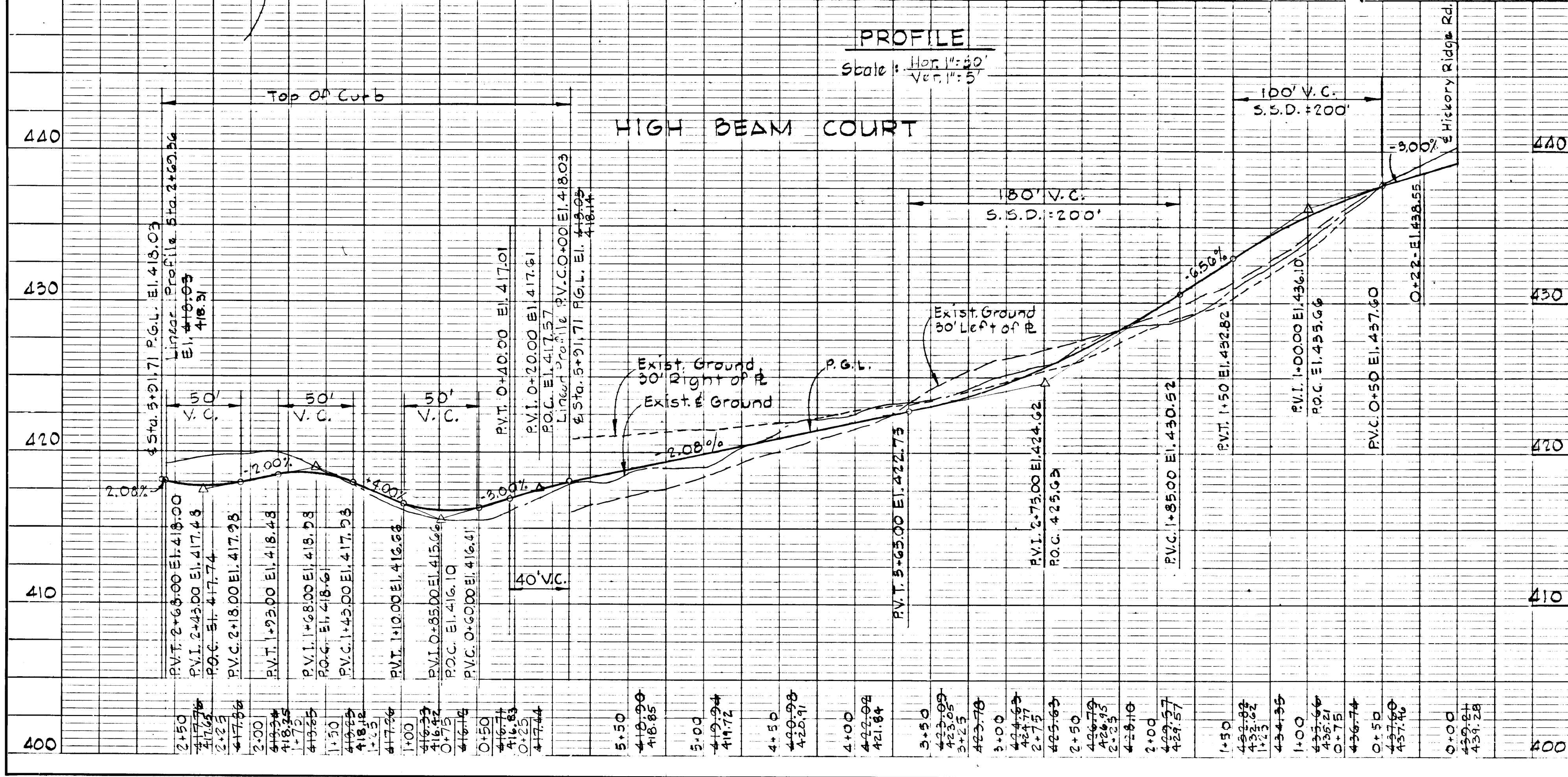
P.C. 2+50.86 TO P.T. 2+69.36
 $\Delta = 48' 11.23"$
 $R = 22.00'$
 $\text{Arc} = 18.50'$
 $\text{Tan} = 9.84'$
 $\text{Chd.} = 17.96'$
 $\text{Chd. Brg.} = N72-58-53E$



NOTE: PAVING WIDTH = 29'
 LENGTH OF ROAD = 650'
 1 SEWER MAIN IN ROAD R/W.

PLAN
SCALE: 1" = 50'

PROFILE
Scale: Hor. 1" = 50'
Ver. 1" = 5'



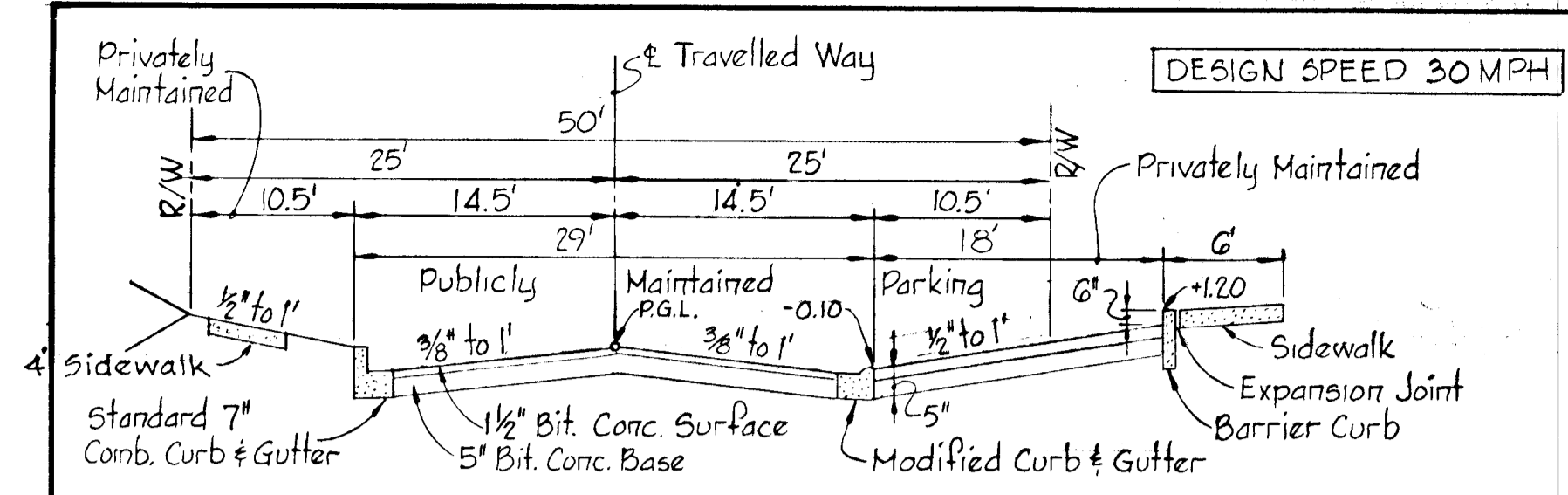
STORM DRAIN STRUCTURE SCHEDULE SEE PLAN & PROFILE FOR ELEVATIONS

| NO. | TYPE | TOPELEV | INV. IN | INV. OUT | LOCATION |
|------|-------------------------------|---------|---------|----------|--|
| I-4a | A-5 Inlet (width 2.5') | 416.64 | 416.64 | 416.64 | 4 Inlet 15.75' back of L.P. Sta. 0+51.94 |
| I-5 | A-5 Inlet with defl. (w=2.5') | 416.64 | 414.17 | 412.19 | 4 Inlet 15.75' left of Sta. 0+13 |
| I-6 | A-5 Inlet (width 2.5') | 416.64 | 416.64 | 416.64 | 4 Inlet 15.75' Right of Sta. 4+38 |
| I-7 | Type D Inlet (2.5' x 2.5') | 416.64 | 416.64 | 416.64 | See Plan and Profile |
| I-10 | A-5 Inlet (width 2.5') | 416.64 | 416.64 | 416.64 | See Plan and Profile |
| I-11 | Type D Inlet (2.5' x 2.5') | 416.64 | 416.64 | 416.64 | See Plan and Profile |
| I-12 | Type D Inlet (2.5' x 2.5') | 416.64 | 416.64 | 416.64 | See Plan and Profile |
| I-13 | A-5 Inlet with defl. (w=2.5') | 416.64 | 414.09 | 412.49 | 4 Inlet 15.75' Right of Sta. 2+32.5 |
| I-14 | A-5 Inlet with defl. (w=2.5') | 416.64 | 414.09 | 412.49 | See Plan and Profile |
| M-5 | Standard Manhole | 416.64 | 416.64 | 416.64 | See Plan and Profile |
| M-6 | Standard Manhole | 416.64 | 416.64 | 416.64 | See Plan and Profile |
| M-1 | Standard Manhole | 416.64 | 416.64 | 416.64 | See Plan and Profile |
| S-2 | Type A Headwall | 416.64 | 416.64 | 416.64 | See Plan and Profile |

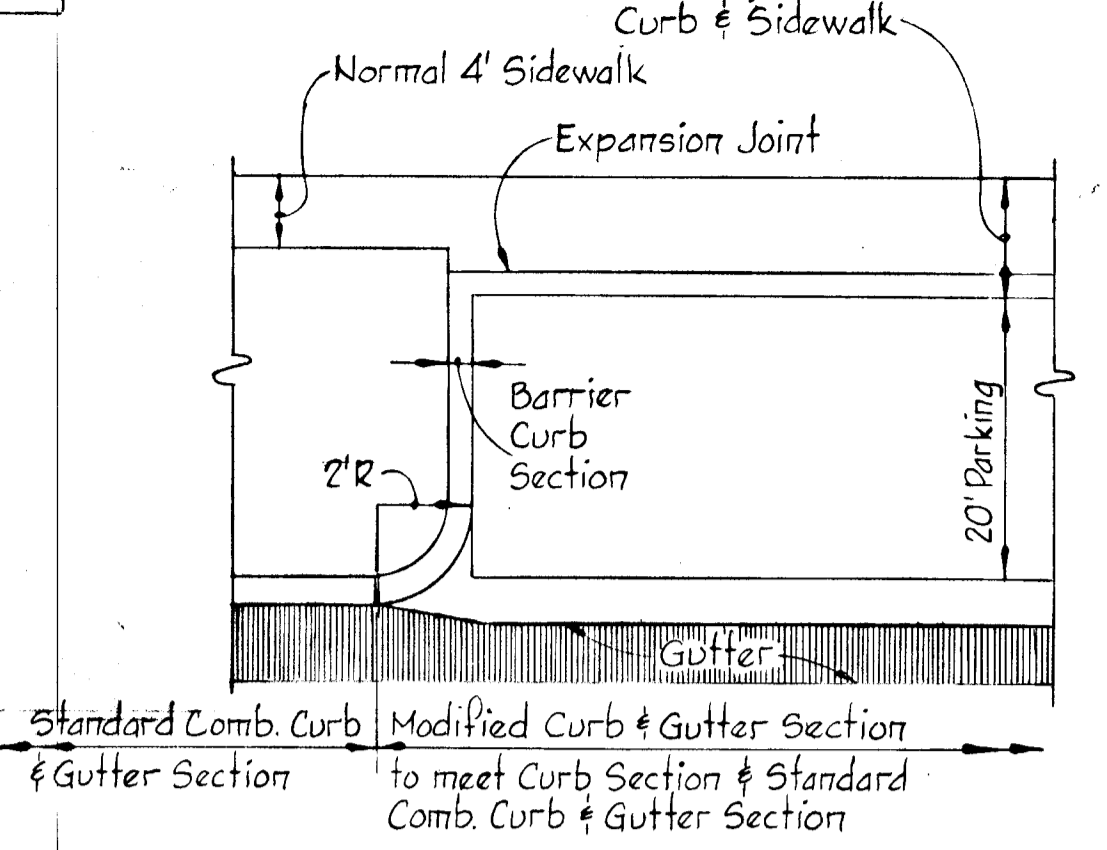
Notes:
 1. Standard A-5 Inlet, Howard County Dwg. 64 A, Page 119 A
 2. Standard Manhole, Howard County Dwg. D-103 Page 158
 3. Standard Type D Class C Inlet, Howard County Dwg. 64 C Page 119 C
 4. For Detail Type A Headwall see sheet 3 of 5. For storm drain profile see sheet 4 of 5

PLAN
 SURVEYED, PLOTTED, ALIGNED, CHECKED, NOTE BOOK, NO. DATE

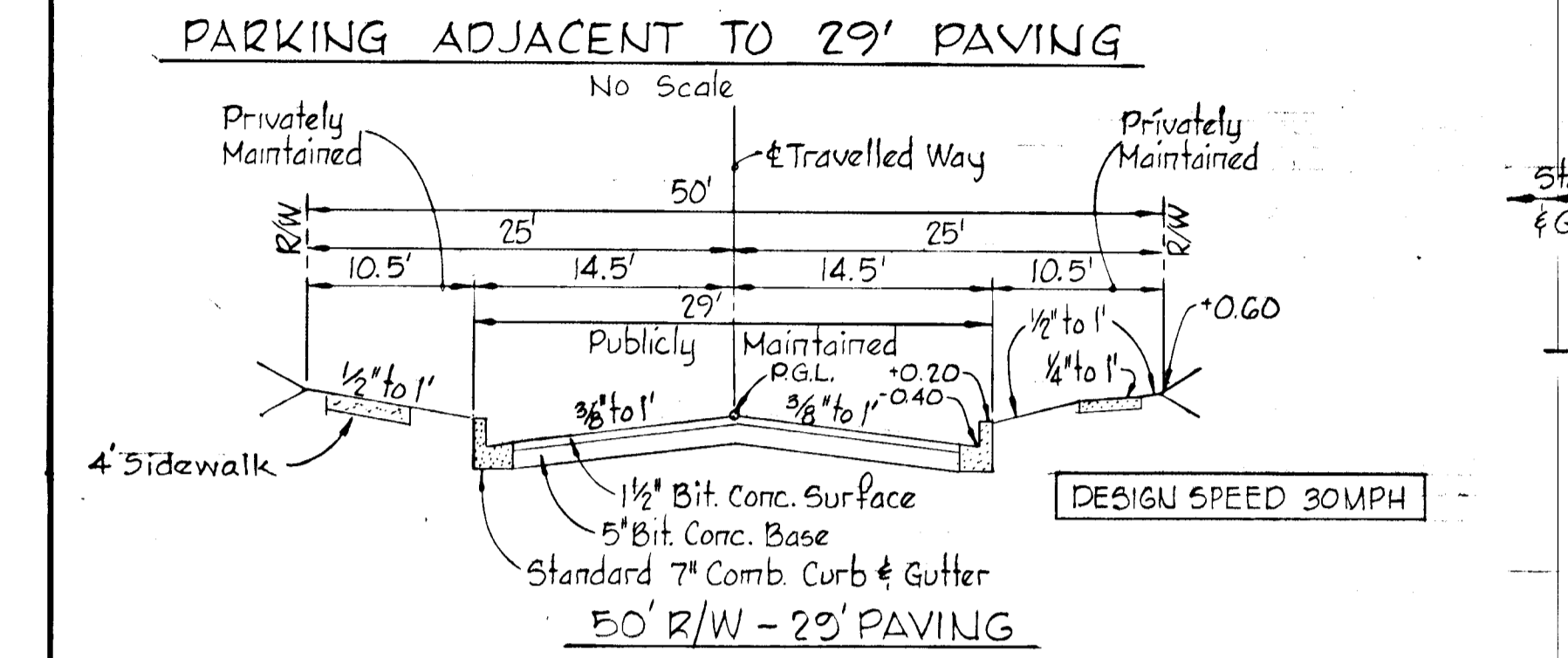
PROFILE
 SURVEYED, PLOTTED, GRADES CHECKED, STRUCTURE SOLUTIONS CHECKED, NOTE BOOK, NO. DATE



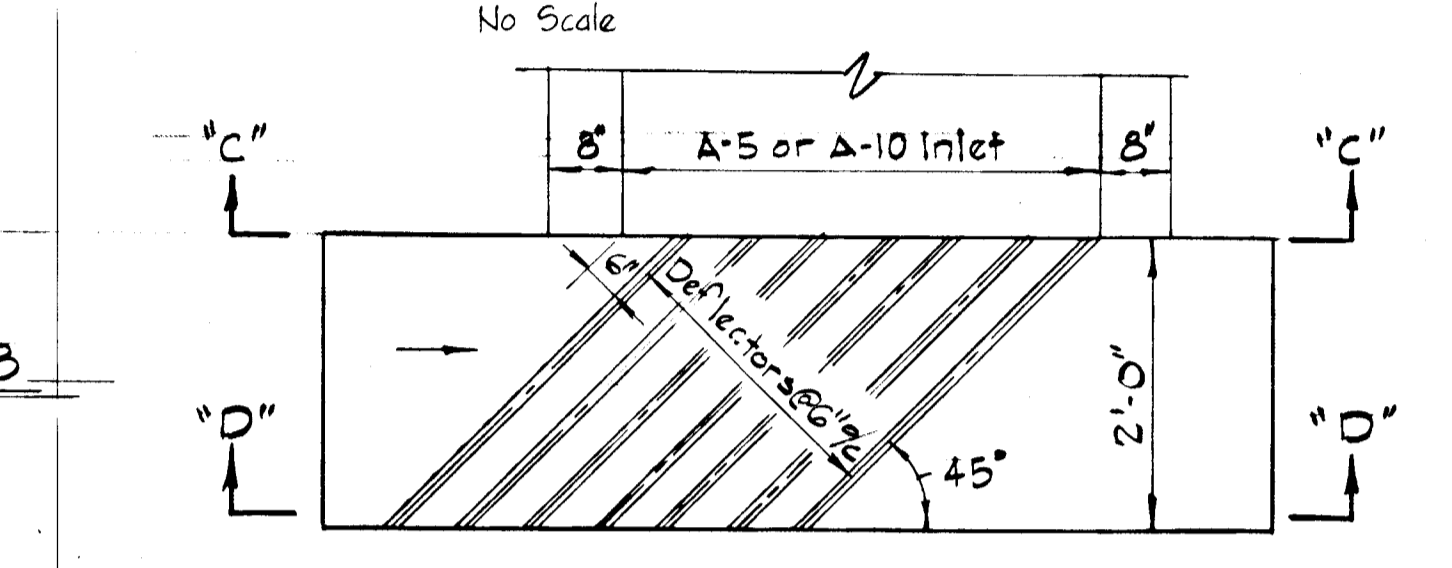
DESIGN SPEED 30MPH



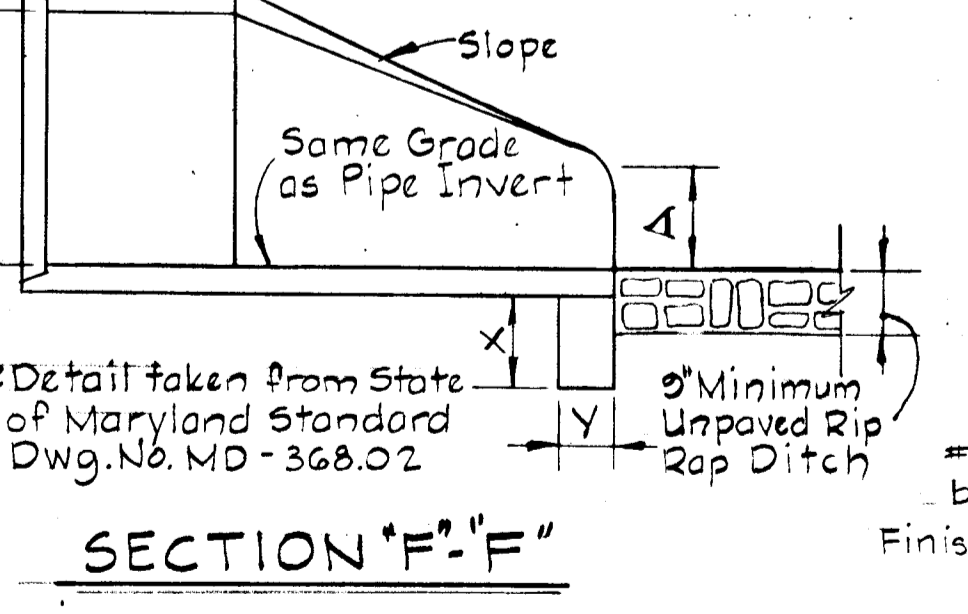
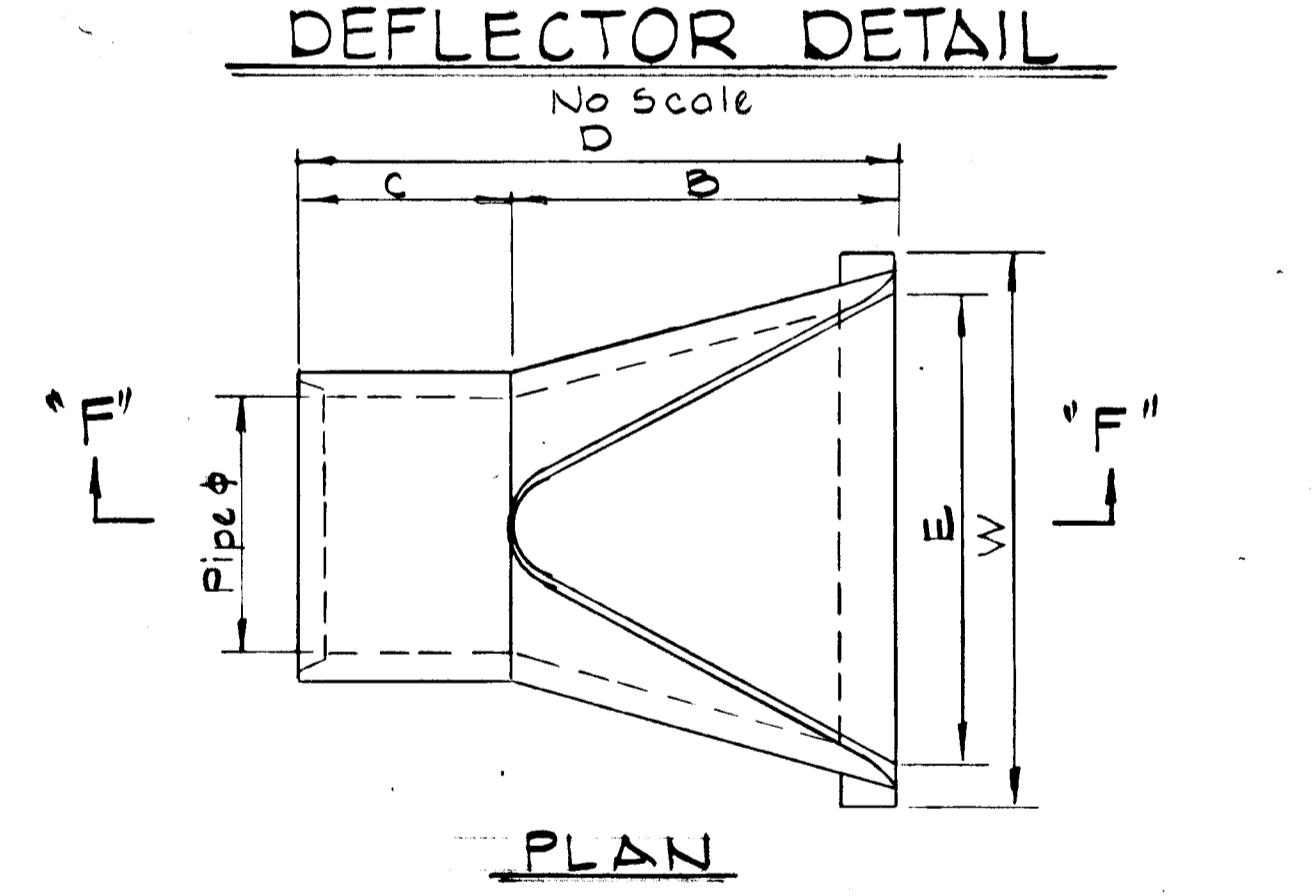
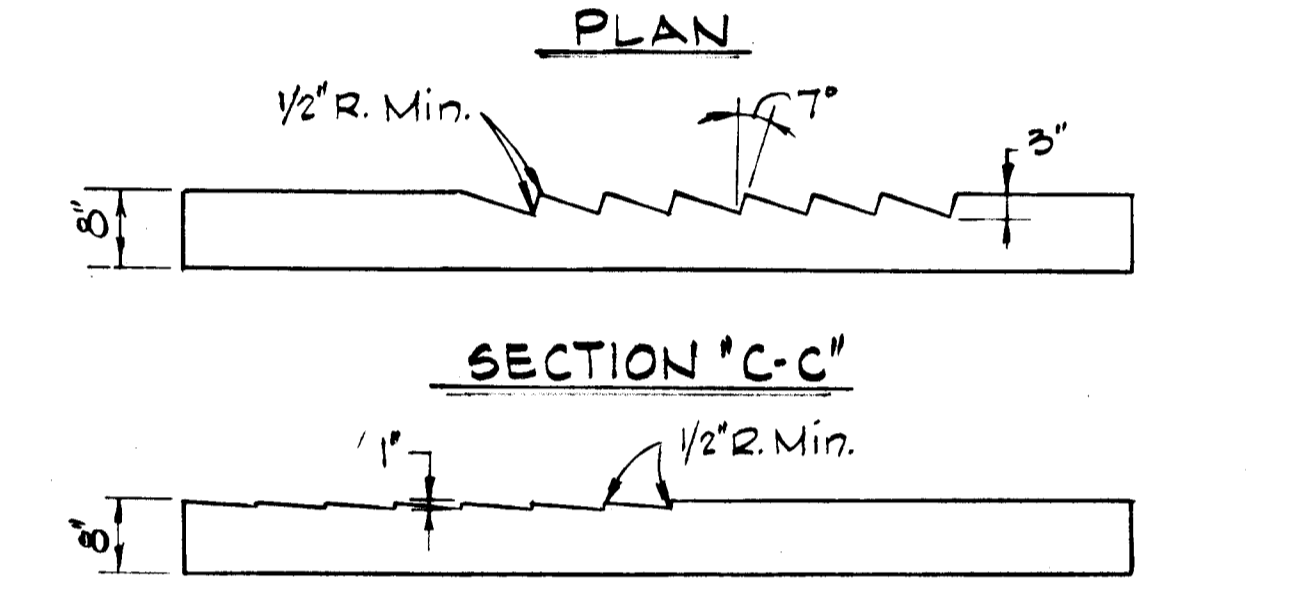
CURB GUTTER TRANSITION DETAIL



DESIGN SPEED 30MPH



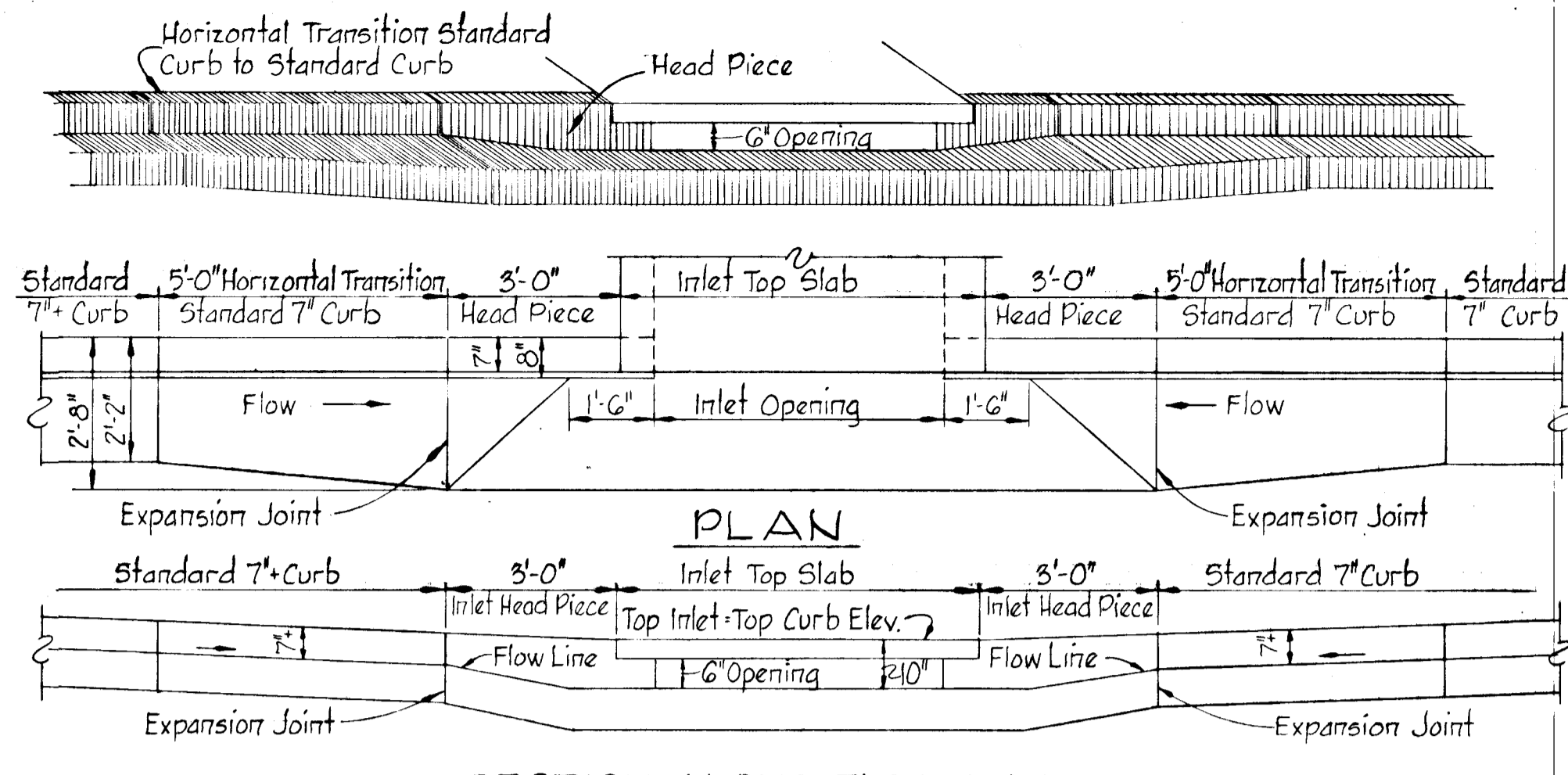
DEFLECTOR DETAIL



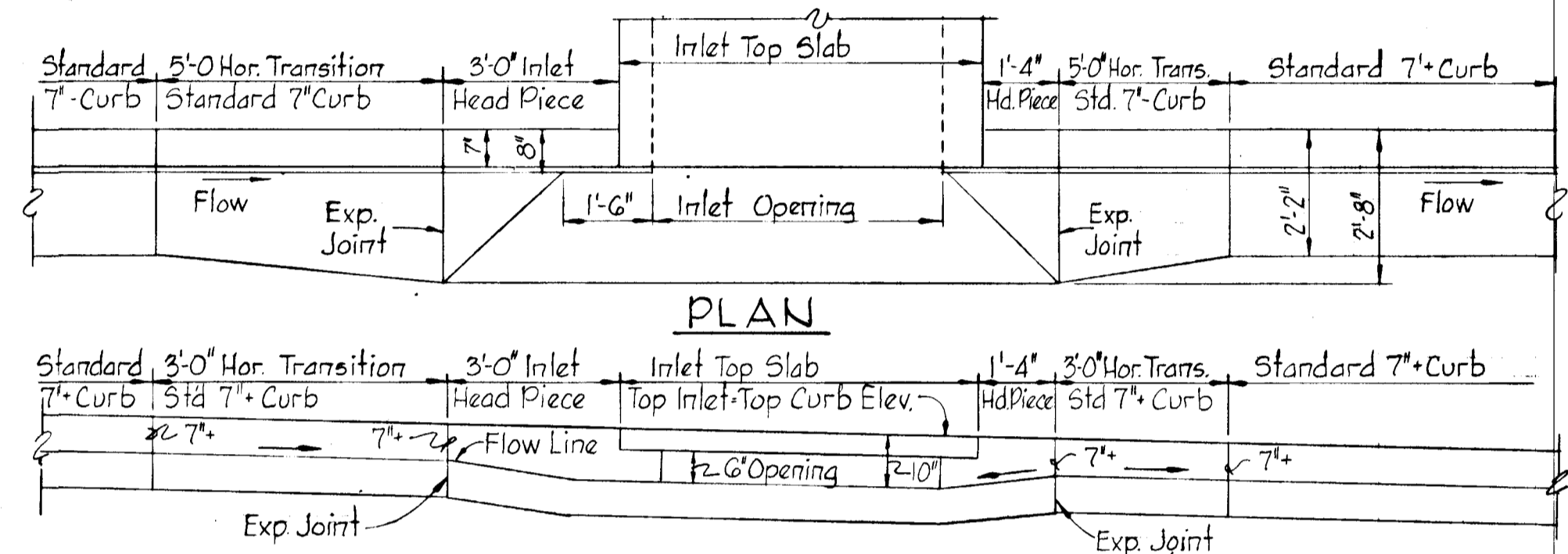
SECTION F-F

| PIPE & SLOPE | A | B | C | D | E | W | X | Y |
|--------------|--------|-----------|------------|------------|-------|-------|-----|----|
| 18" 3:1 | 0" | 2'-3" | 3'-10" | 6'-1" | 3'-0" | 4'-0" | 12" | 0" |
| 24" 3:1 | 0 1/2" | 3'-7 1/2" | 4'-6" | 6'-11 1/2" | 4'-0" | 5'-0" | 15" | 0" |
| 30" 3:1 | 1'-0" | 4'-6" | 6'-7 1/2" | 6'-11 1/2" | 5'-0" | 6'-0" | 15" | 0" |
| 36" 3:1 | 1'-3" | 5'-3" | 6'-10 1/2" | 8'-1 1/2" | 6'-0" | 7'-3" | 15" | 0" |

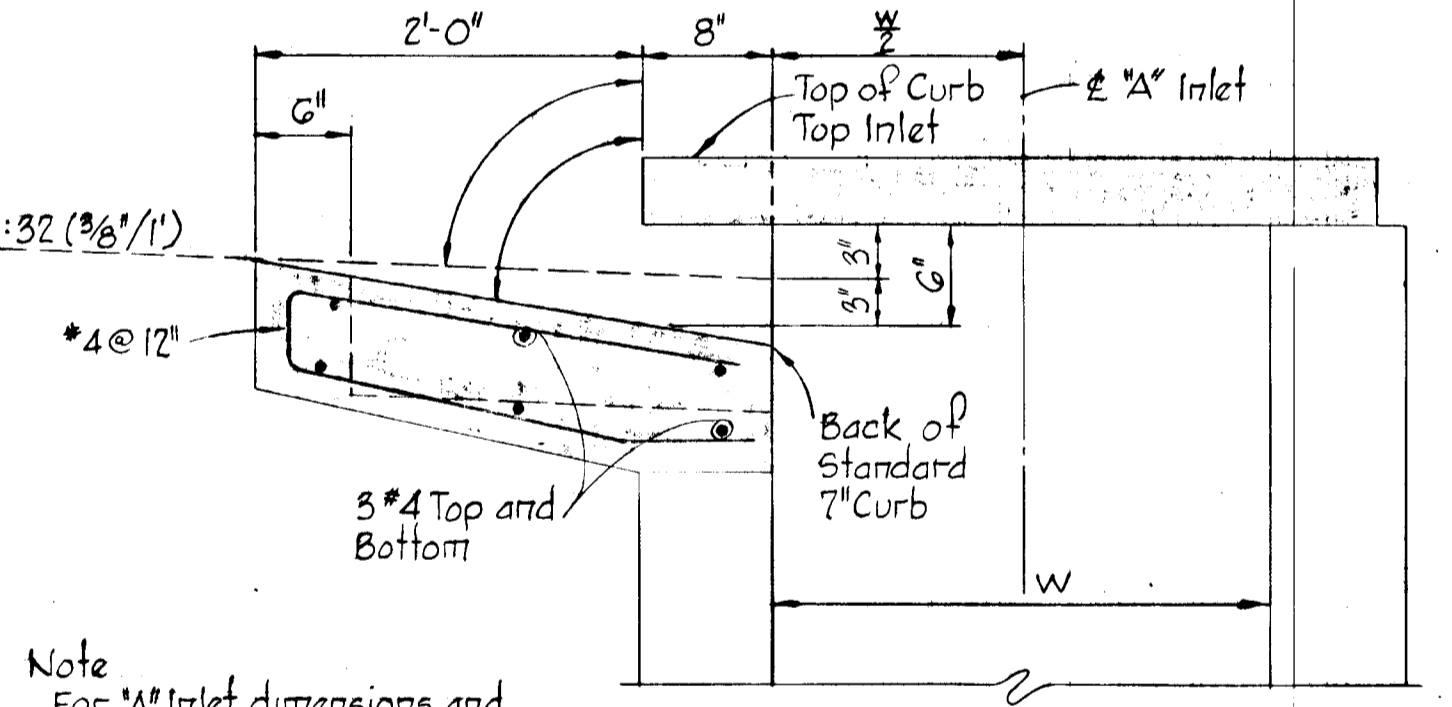
CONCRETE END SECTION DETAIL



SECTION ALONG FLOW LINE SUMPED "A" INLETS - STANDARD CURB

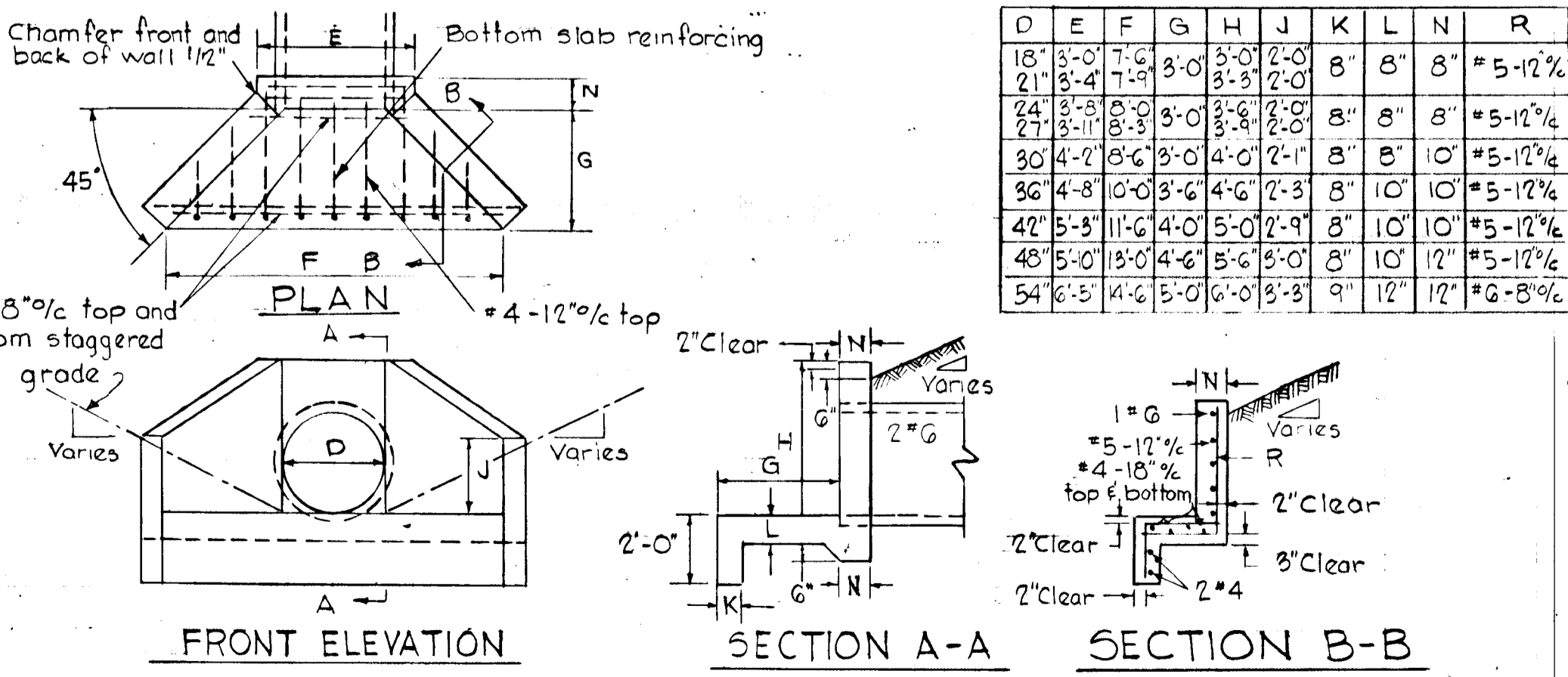


SECTION ALONG FLOW LINE "A" INLETS - STANDARD CURB

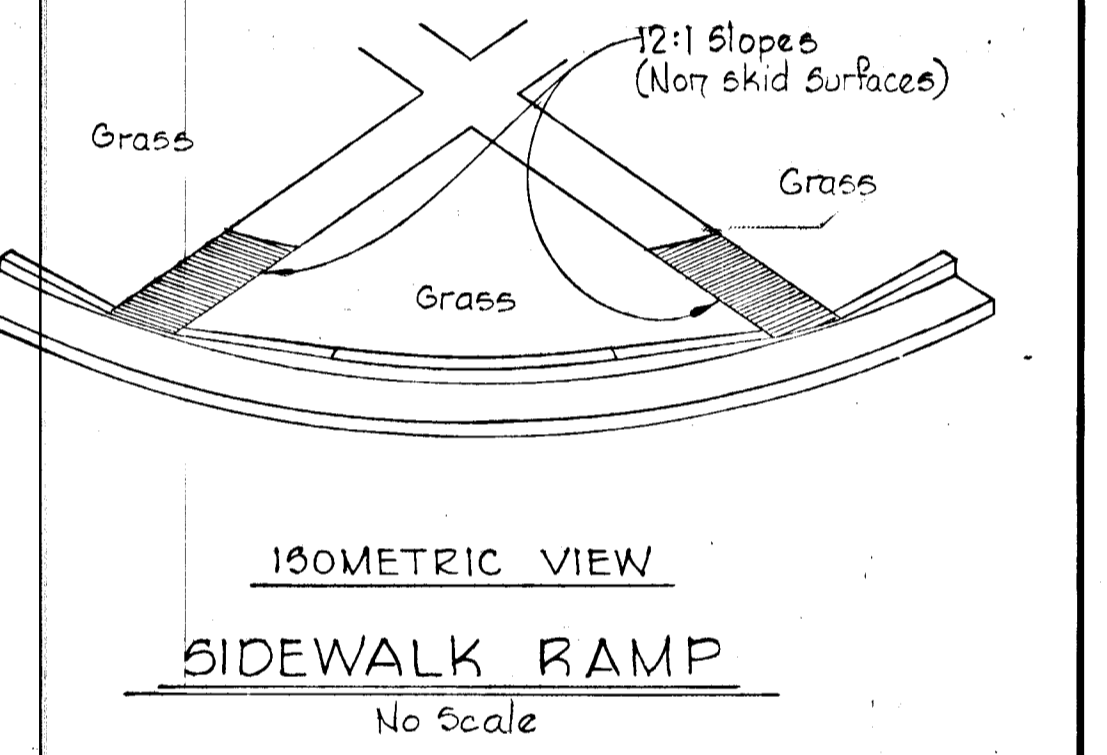
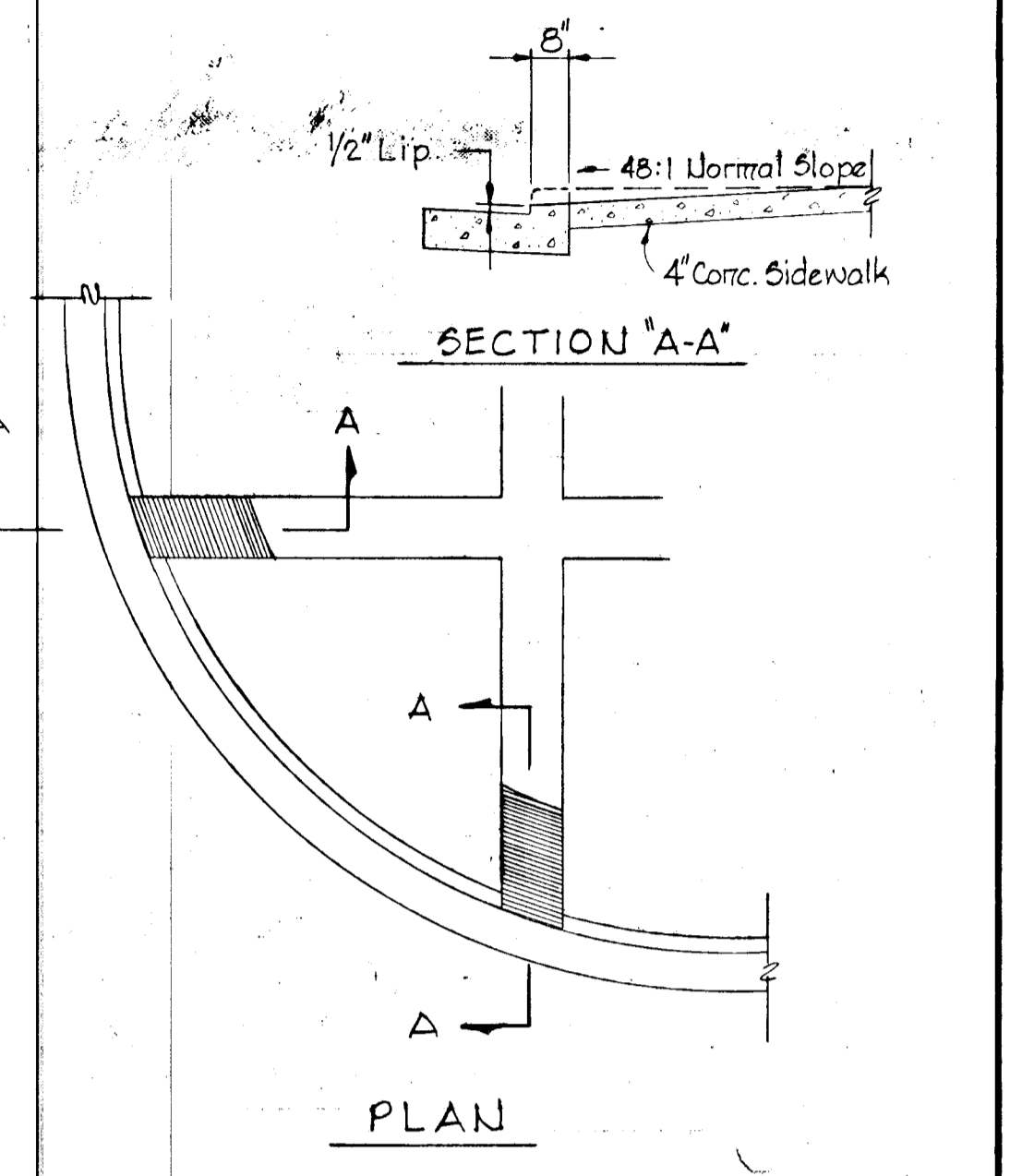


Note: For "A" Inlet dimensions and structural details, see standard Howard County Drawing G4-A page 119-A

SECTION "A" INLET STANDARD CURB



TYPE "A" HEADWALL



| Rev. Date | Rev. No. | Description |
|-----------|----------|------------------------|
| 3/12/79 | 1 | As per D.P.W. Comments |

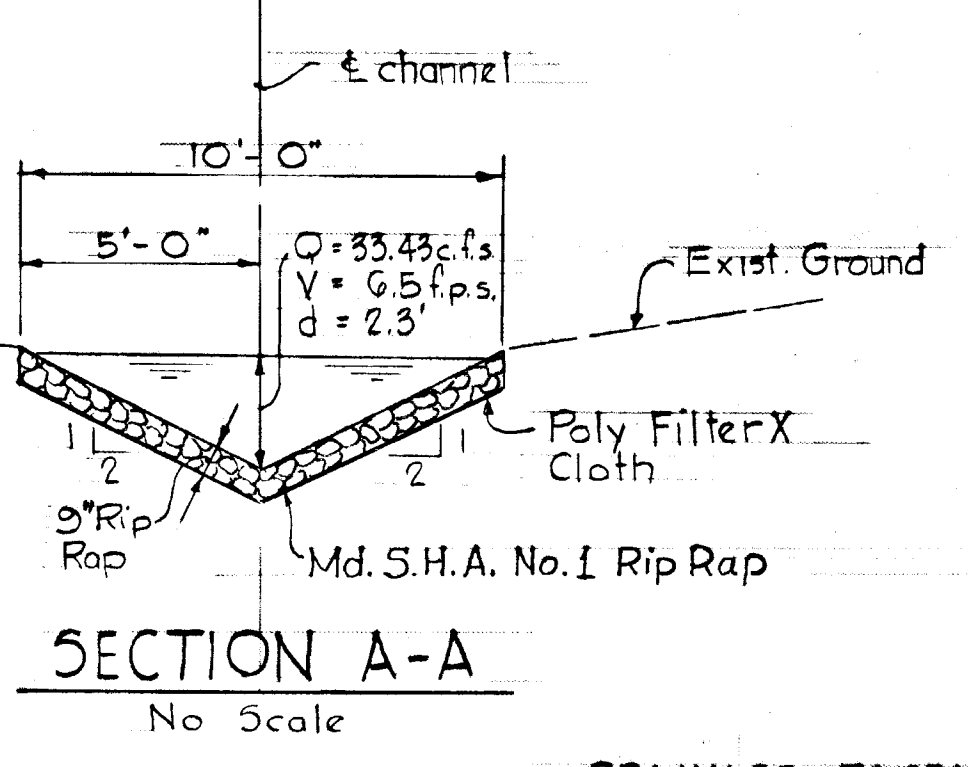
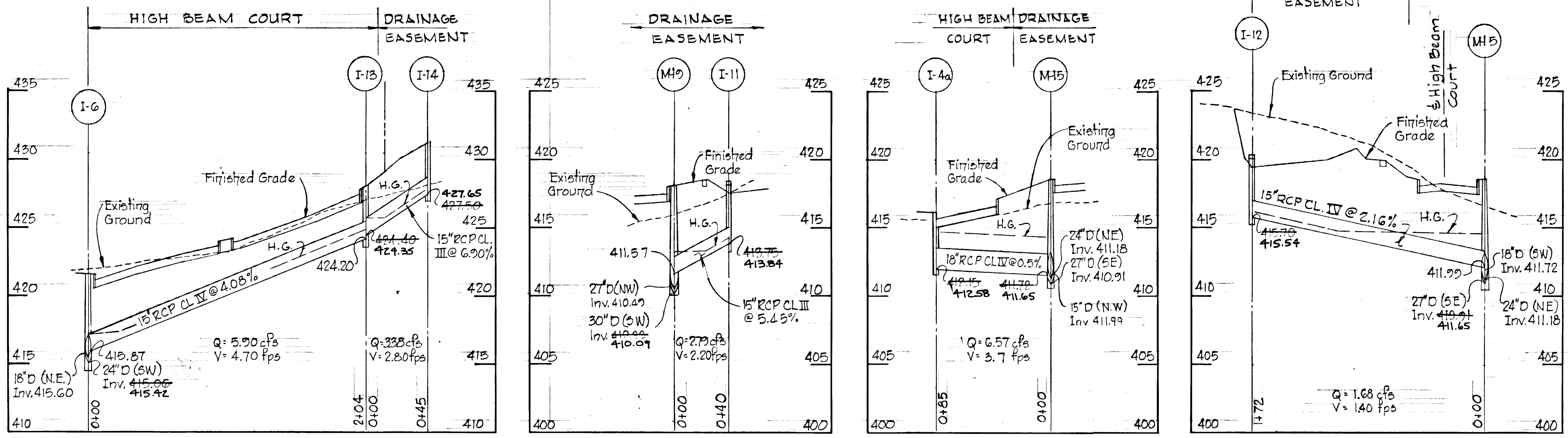
COLUMBIA
 5TH ELECTION DISTRICT
 HOWARD COUNTY, MARYLAND
 OWNER AND DEVELOPER
 HOWARD HOMES COMMUNITIES, INC.

PROJECT AREA
 VILLAGE OF HICKORY RIDGE
 SECTION I, AREA G LOTS C-40 TO C-134
 A RESUBDIVISION OF A PORTION OF PARCEL "C"

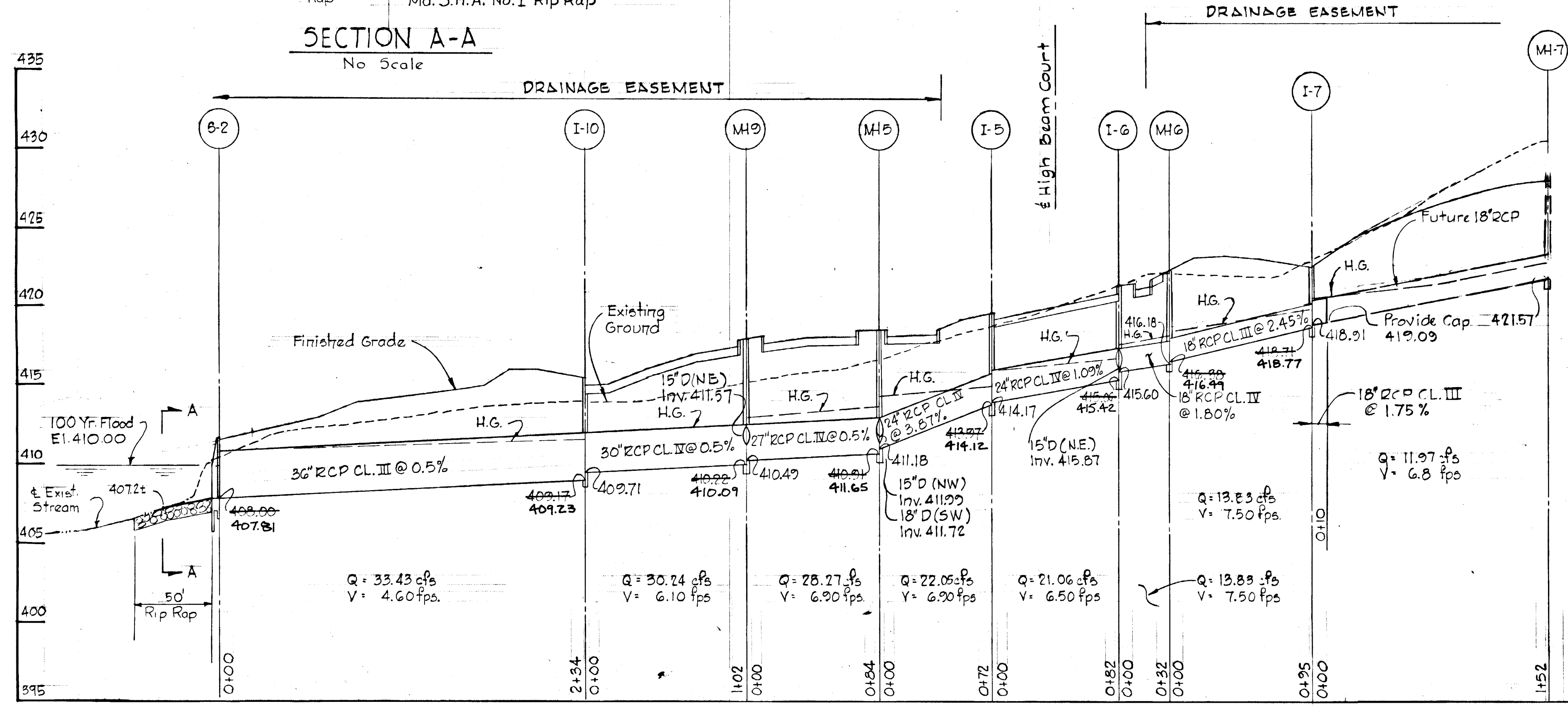
PROJECT TITLE
 STANDARD DETAILS 5
 SCALE: AS SHOWN DATE
 WHITMAN, REQUARDT & ASSOCIATES
 ENGINEERS
 BALTIMORE, MARYLAND 21202

Kenneth A. McCord
 KENNETH A. McCORD
 Registered Engineer
 No. 1974

#42



Note:
The approved Storm Water Management Pond, which will be constructed just off the southwest corner of the property, satisfies all sediment control and storm water management requirements for this section. See Sheets 4 and 5 of 7, SDP 79-77. For stabilization of disturbed areas and flushing of storm drains, see Sheet 5 of 7 SDP 79-77.



CERTIFICATION BY THE DEVELOPER
"I CERTIFY THAT ALL DEVELOPMENT AND/OR CONSTRUCTION WILL BE DONE ACCORDING TO THIS PLAN OF DEVELOPMENT AND PLAN FOR EROSION AND SEDIMENT CONTROL, AND I ALSO AUTHORIZE PERIODIC ON-SITE INSPECTION BY THE HOWARD SOIL CONSERVATION DISTRICT OR THEIR AUTHORIZED AGENTS, AS ARE DEEMED NECESSARY."
Ken B. Cook 3-5-79
SIGNATURE OF DEVELOPER DATE

CERTIFICATION BY THE ENGINEER
"I CERTIFY THAT THIS PLAN FOR EROSION AND SEDIMENT CONTROL REPRESENTS A PRACTICAL AND WORKABLE PLAN BASED ON MY PERSONAL KNOWLEDGE OF THE SITE CONDITIONS AND THAT IT WAS PREPARED IN ACCORDANCE WITH THE REQUIREMENTS OF THE HOWARD SOIL CONSERVATION DISTRICT."
Kenneth A. McCord 3-5-79
SIGNATURE OF ENGINEER DATE

REVIEWED FOR Howard S.C.D. NAME
AND MEETS TECHNICAL REQUIREMENTS
C. Wayne Ray DATE 5/5/79
SIGNATURE
U.S. SOIL CONSERVATION SERVICE
THIS DEVELOPMENT PLAN IS APPROVED FOR SOIL EROSION AND SEDIMENT CONTROL BY THE HOWARD SOIL CONSERVATION DISTRICT.
APPROVED Asst. Dir. 5
HOWARD S.C.D.
DATE 5-3-79

| | | |
|--|----------|----------------------|
| 3/12/79 | 1 | As per DPW Comments |
| Rev. Date | Rev. No. | Revision Description |
| COLUMBIA 5 TH ELECTION DISTRICT HOWARD COUNTY, MARYLAND | | |
| OWNER AND DEVELOPER HOWARD HOMES COMMUNITIES, INC. | | |
| PROJECT AREA VILLAGE OF HICKORY RIDGE SECTION I AREA G LOTS C-40 TO C-134 A RESUBDIVISION OF A PORTION OF PARCEL C* | | |
| PROJECT TITLE STORM DRAIN PROFILES | | |
| SCALE: AS SHOWN | | DATE |
| WHITMAN, REQUARDT & ASSOCIATES ENGINEERS BALTIMORE, MARYLAND 21202 | | |
| <i>Kenneth A. McCord</i> KENNETH A. McCORD Registered Engineer No. 1974 | | |



- LEGEND**
- 430- Contour (2' interval)
 - (A) Building Group Number
 - (1) Number of Dwellings in Building Group
 - C-16 Lot Number
 - 20' Travelled Way (To be Publicly Maintained)
 - Concrete Walk
 - 100 Year Flood Plain Elev.
 - Macadam Walk

DEPARTMENT OF PUBLIC WORKS
NO Permit 5-22-79 DATE
 CHIEF BUREAU OF ENGINEERING
 OFFICE OF PLANNING & ZONING
 CHIEF DIVISION OF LAND DEVELOPMENT DATE

Note: For continuation of drainage area, see map bound in the accompanying Drainage Computations

LAND DESIGN / RESEARCH
 ENGINEERS
 WHITMAN, REQUARDT & ASSOCIATES
 BALTIMORE, MARYLAND
Kenneth A. McCord
 KENNETH A. MCCORD P.E. NO. 1974

THE HOWARD RESEARCH AND DEVELOPMENT CORPORATION
 OWNER
 10275 LITTLE PATUXENT PARKWAY
 COLUMBIA, MARYLAND
 HOWARD HOMES COMMUNITIES, INC.
 DEVELOPER
 P.O. BOX 802, COLUMBIA, MARYLAND

A. Hillman 5-18-79

3/12/79 As per DPW Comments
 DESIGN REVISION
COLUMBIA
DRAINAGE AREA MAP
 FOR
HICKORY RIDGE
 SECTION 1 AREA G
 LOTS C-10 THRU C-124
 A RESUBDIVISION OF A PORTION OF PARCEL "C"
 SHEET 5 OF 5
 ELECTION DISTRICT NO. 5, HOWARD COUNTY, MARYLAND
 DATE: SCALE: 1" = 30'