

COLUMBIA

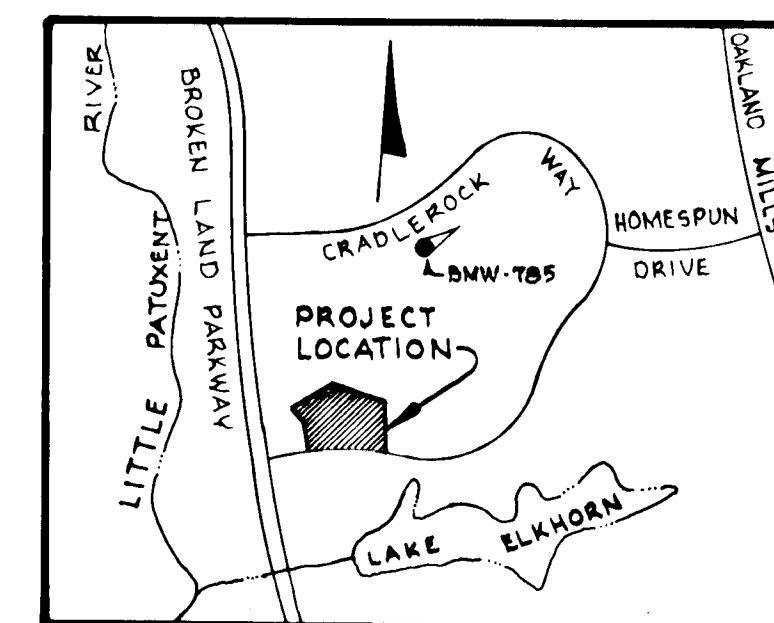
HOWARD COUNTY, MARYLAND
6TH ELECTION DISTRICT

ROAD CONSTRUCTION PLANS VILLAGE OF OWEN BROWN SECTION I AREA I RESUBDIVISION OF PARCEL "E-4"

GENERAL NOTES

1. Bench Mark W-785 iron pipe 195' right of & station 17+00 Cradlerock Way. Elev. 351.79
2. All work shall be done in accordance with the Howard County Road Construction Code and Standard Specifications.
3. All utility companies must be notified 24 hours in advance of any construction.
4. Secondary residential streets are designed for 30 mph. traffic speed in accordance with AASHO Standards.
5. All inlets shall be Howard County Standard unless otherwise shown. All "A" inlets shall be depressed.
6. Storm drain trenches within road rights-of-way shall be backfilled and compacted in accordance with Howard County Road Code.
7. Speed limit for loop portions of streets shall be 15 mph.
8. Any damage to public rights of ways or paving will be corrected at the developer's expense.

SHEET INDEX	
NO.	DESCRIPTION
1	TITLE SHEET
2	PLAN AND PROFILE - KERRY HILL COURT
3	STANDARD DETAILS
4	STORM DRAIN PROFILES AND SPECIAL DETAIL
5	DRAINAGE AREA MAP



VICINITY MAP
Scale: 1"=2000'

APPROVED
DIVISION OF LAND DEVELOPMENT
AND TRANSPORTATION PLANNING
HOWARD COUNTY, MARYLAND
5-13-76
JAC

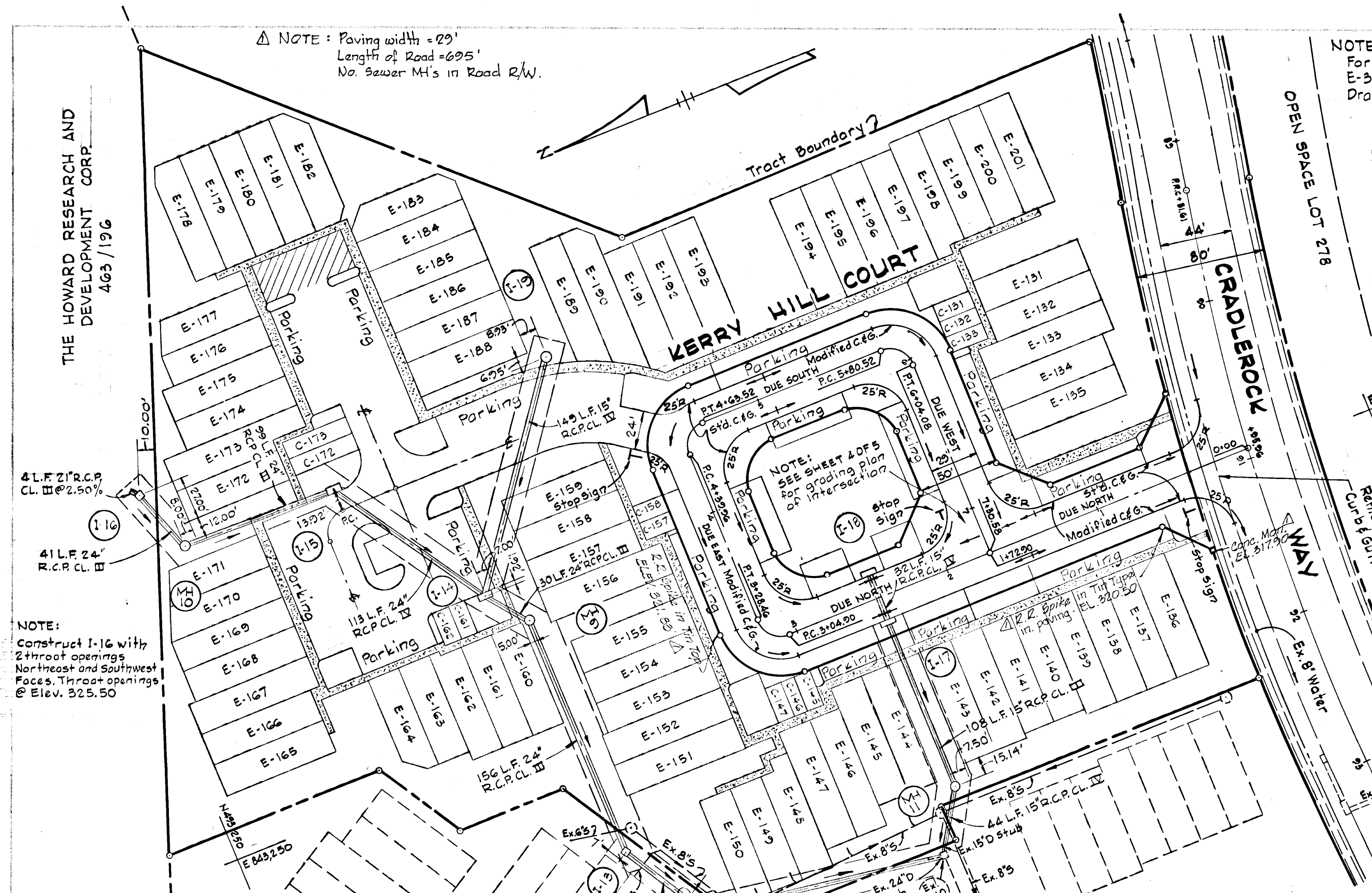
DEPARTMENT OF PUBLIC WORKS
Howard County 6/14/76
CHIEF, BUREAU OF HIGHWAYS DATE
OFFICE OF PLANNING AND ZONING
Kenneth A. McCord 5/28/76
CHIEF, DIVISION OF LAND DEVELOPMENT AND TRANSPORTATION PLANNING DATE

OWEN BROWN "E" DEV CORP.
CORPORATE OFFICE
10275 LITTLE PATUXENT PARKWAY
COLUMBIA, MARYLAND

DEVELOPER
HOWARD HOMES COMMUNITIES, INC.
PO Box 802
COLUMBIA, MARYLAND



WHITMAN, REOUARDT / ASSOCIATES
ENGINEERS
BALTIMORE, MARYLAND
Kenneth A. McCord
KENNETH A. McCORD
Registered Engineer
No. 1974

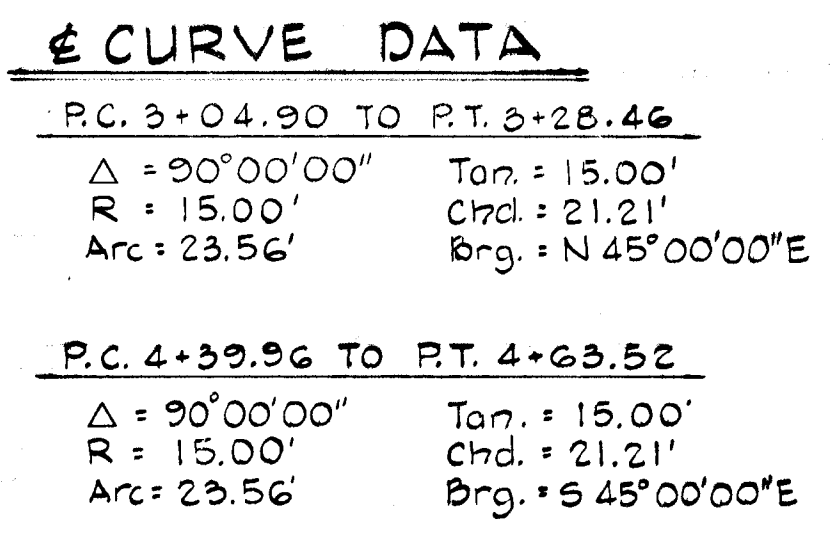
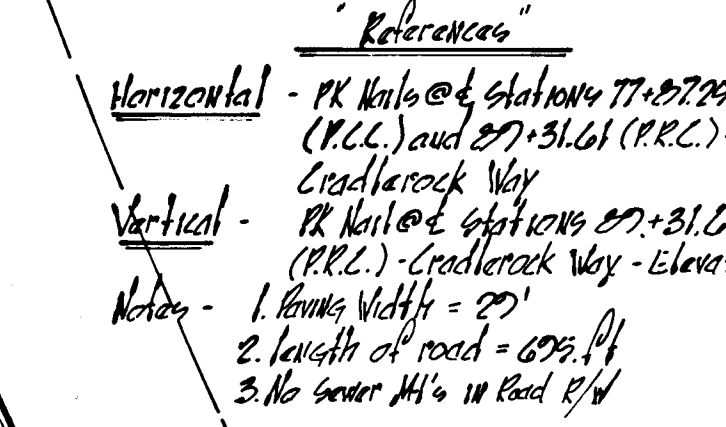
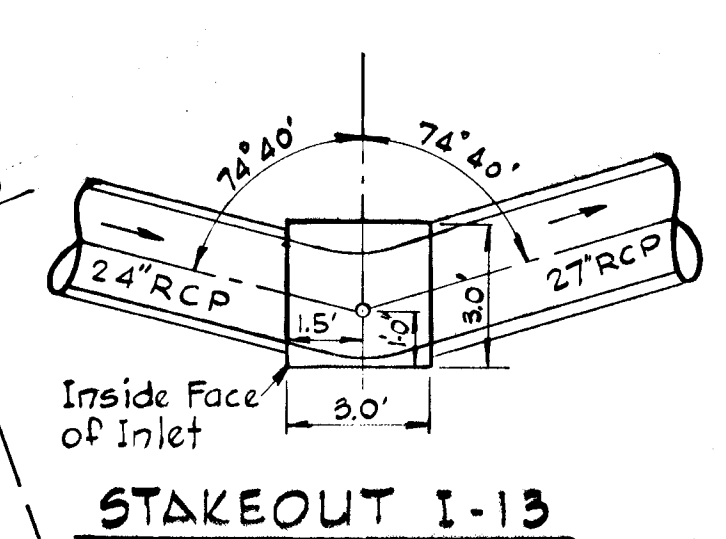


STORM DRAIN STRUCTURE SCHEDULE

NO.	TYPE	TOE IN/OUT	LOCATION
I-13	"C" Type 10 Inlet See Sheet 305	317.33 312.05	See Plan and Stakeout Detail This Sheet
I-14	Standard A-5 Inlet Width: 2.5'	325.00 317.71	See Plan and Stakeout Detail This Sheet
I-15	Standard A-5 Inlet Width: 2.5'	329.00 320.22	See Plan
I-16	"C" Type 10 Inlet See Sheet 305	326.33 321.56	See Plan and Stakeout Detail This Sheet
I-17	Standard A-5 Inlet Width: 2.5'	321.30 316.53	See Plan and Stakeout Detail This Sheet
I-18	Standard A-5 Inlet Width: 2.5'	321.30 317.01	See Plan and Stakeout Detail This Sheet
I-19	Yard Type Inlet See Sheet 305	323.55 326.00	See Plan
MH-8	Type A Manhole See Sheet 305	326.00 310.79	See Plan
MH-9	Standard Manhole	321.50 317.04	See Plan
MH-10	Type B Manhole See Sheet 305	326.75 321.31	See Plan
MH-11	Standard Manhole	312.00 306.58	See Plan

DEPARTMENT OF PUBLIC WORKS
41 21/2 Mallard Road
CHIEF, BUREAU OF HIGHWAYS
DATE 6/14/76

OFFICE OF PLANNING AND ZONING
K. Calver
CHIEF, DIVISION OF LAND DEVELOPMENT AND TRANSPORTATION PLANNING
DATE 5/28/76



APPROVED
DIVISION OF LAND DEVELOPMENT AND TRANSPORTATION PLANNING
HOWARD COUNTY, MARYLAND
DATE 5-13-76

5-10-77 As Built
Rev. No. Revision Description

COLUMBIA
6th ELECTION DISTRICT
HOWARD COUNTY, MARYLAND

OWNER and DEVELOPER
HOWARD HOMES COMMUNITIES, INC.

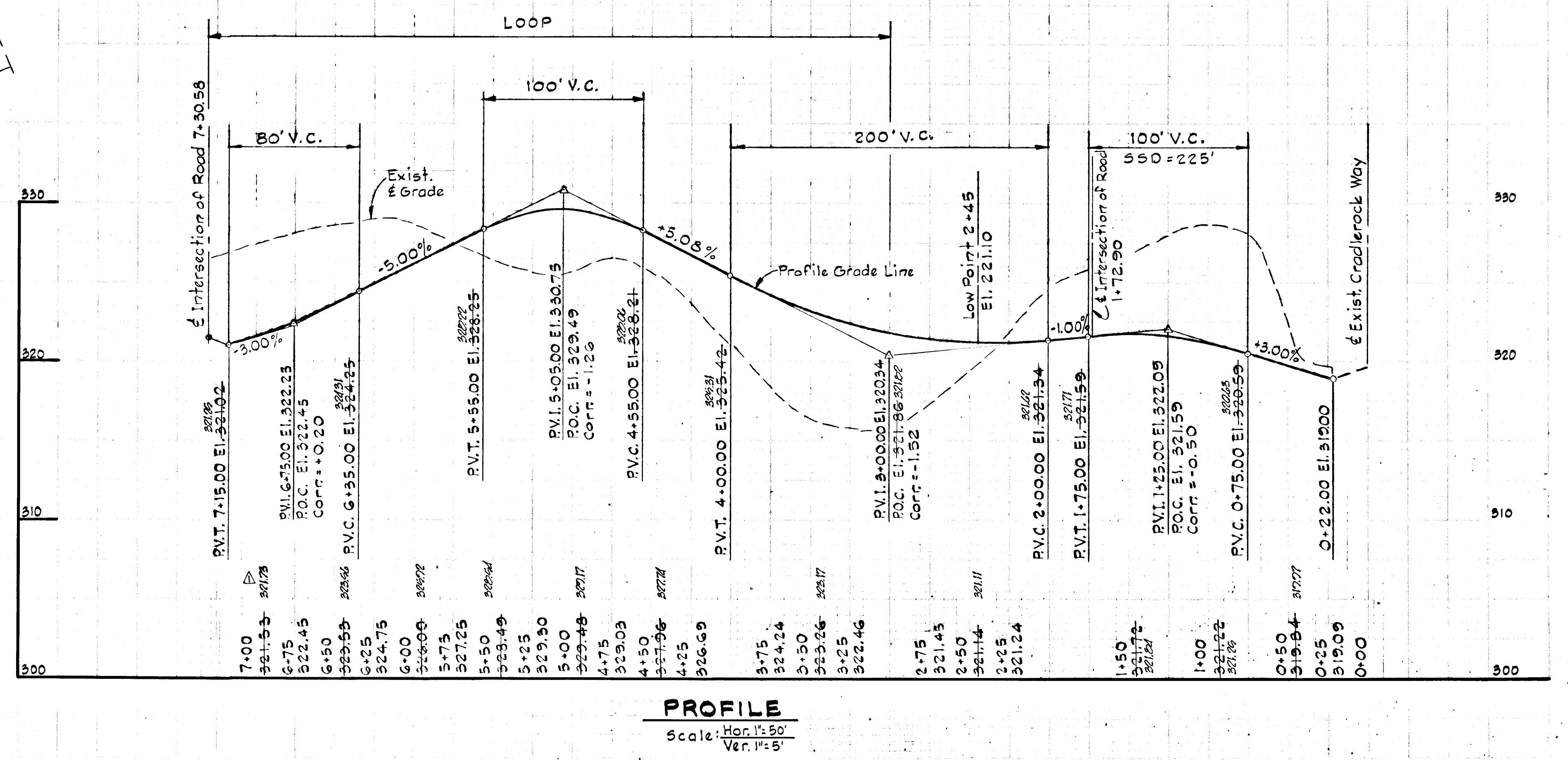
PROJECT AREA
VILLAGE OF OWEN BROWN
SECTION I, AREA I - RESUBDIVISION OF PARCEL E-4

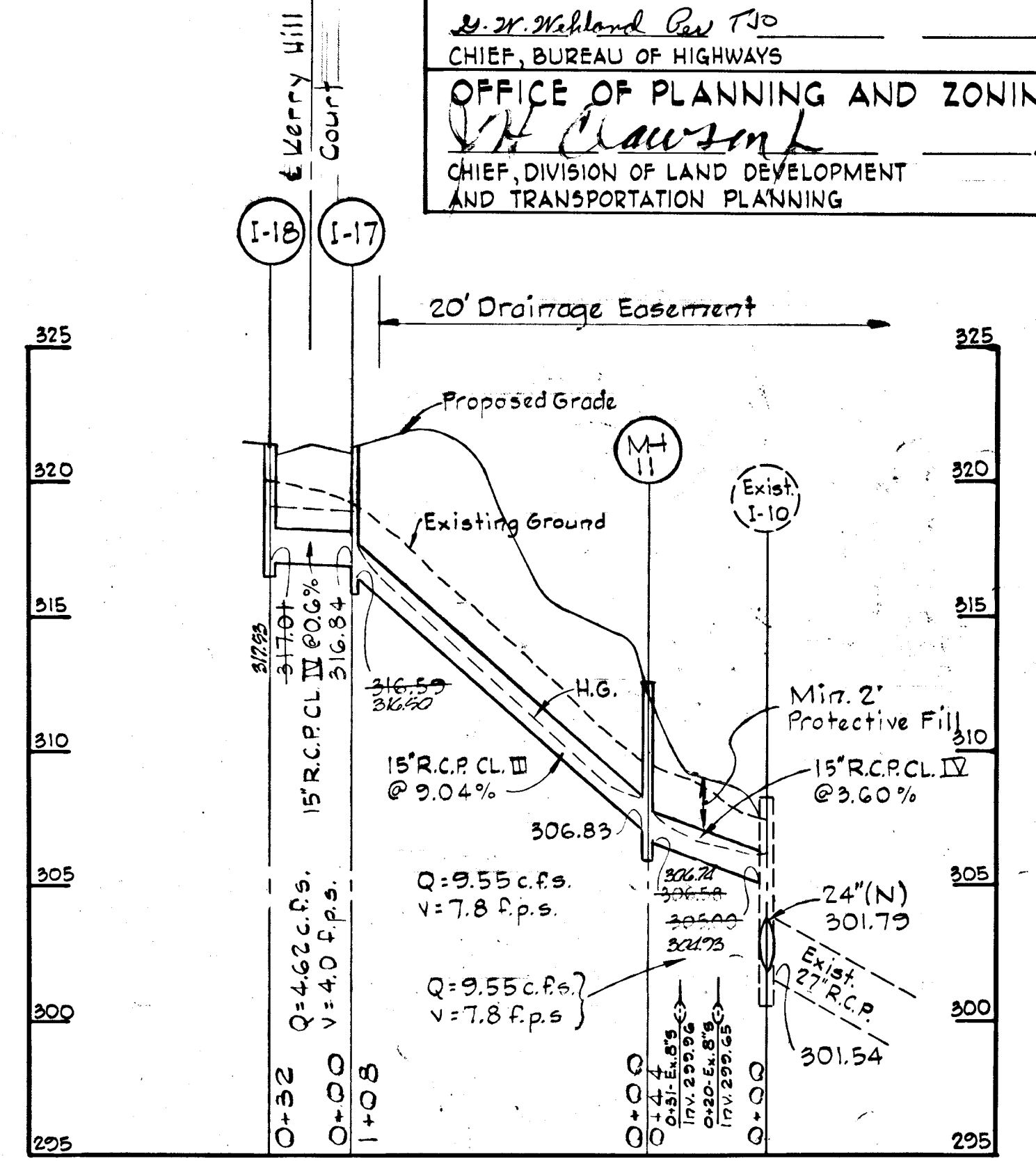
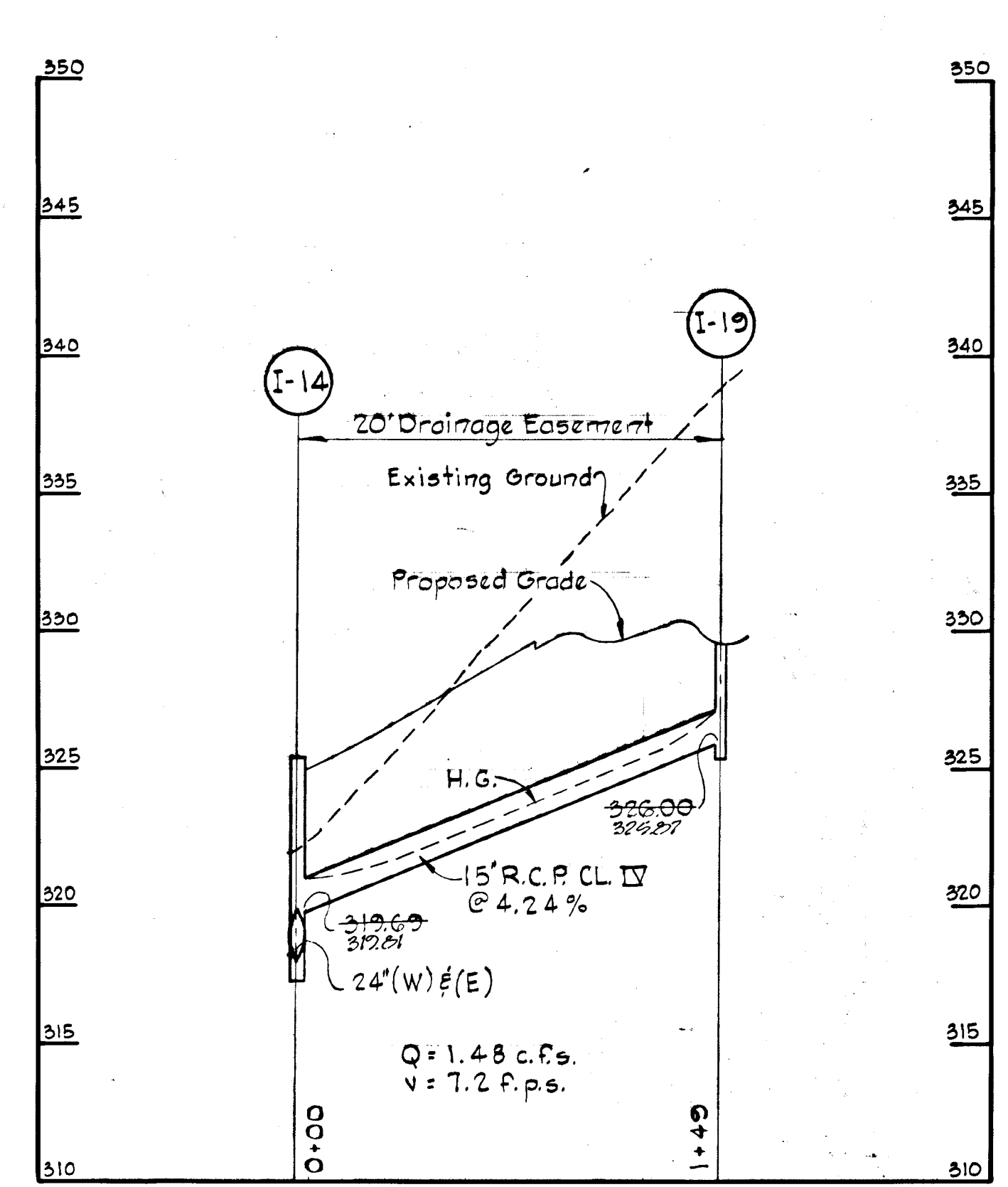
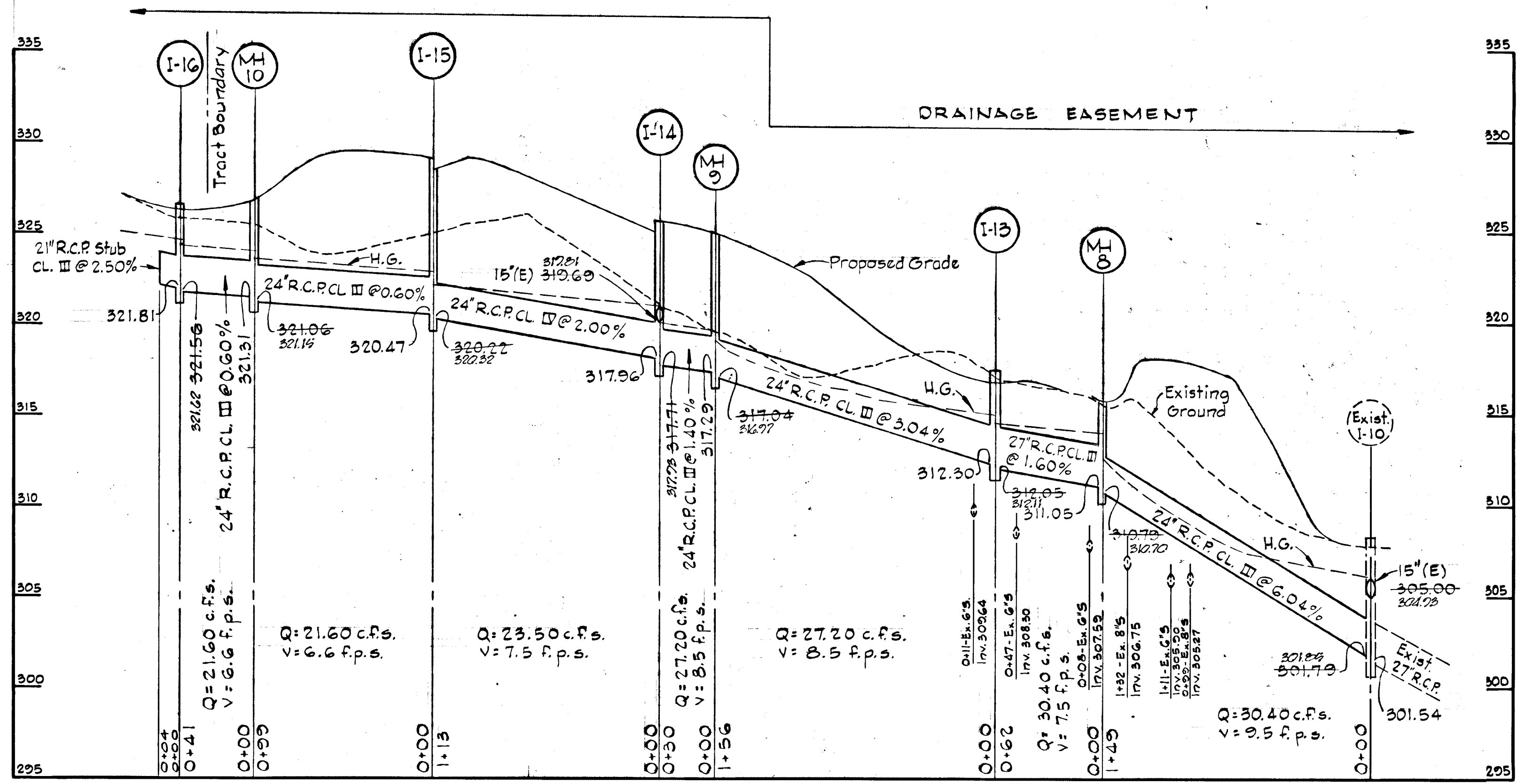
PROJECT TITLE
KERRY HILL COURT
PLAN AND PROFILE

Scale: As Shown Date: May 24, 1976

WHITMAN, REARDOT & ASSOCIATES
ENGINEERS
BALTIMORE, MARYLAND 21202

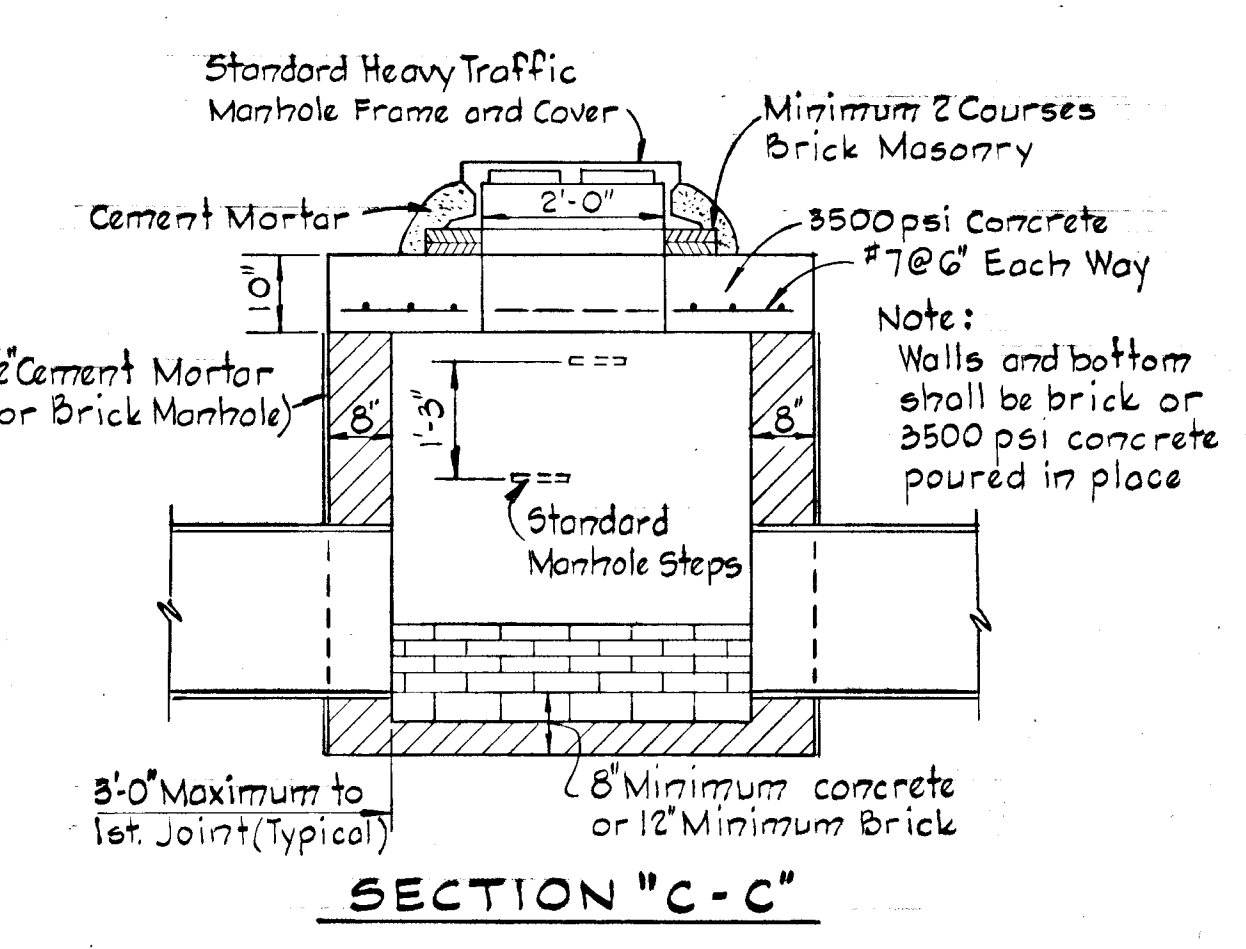
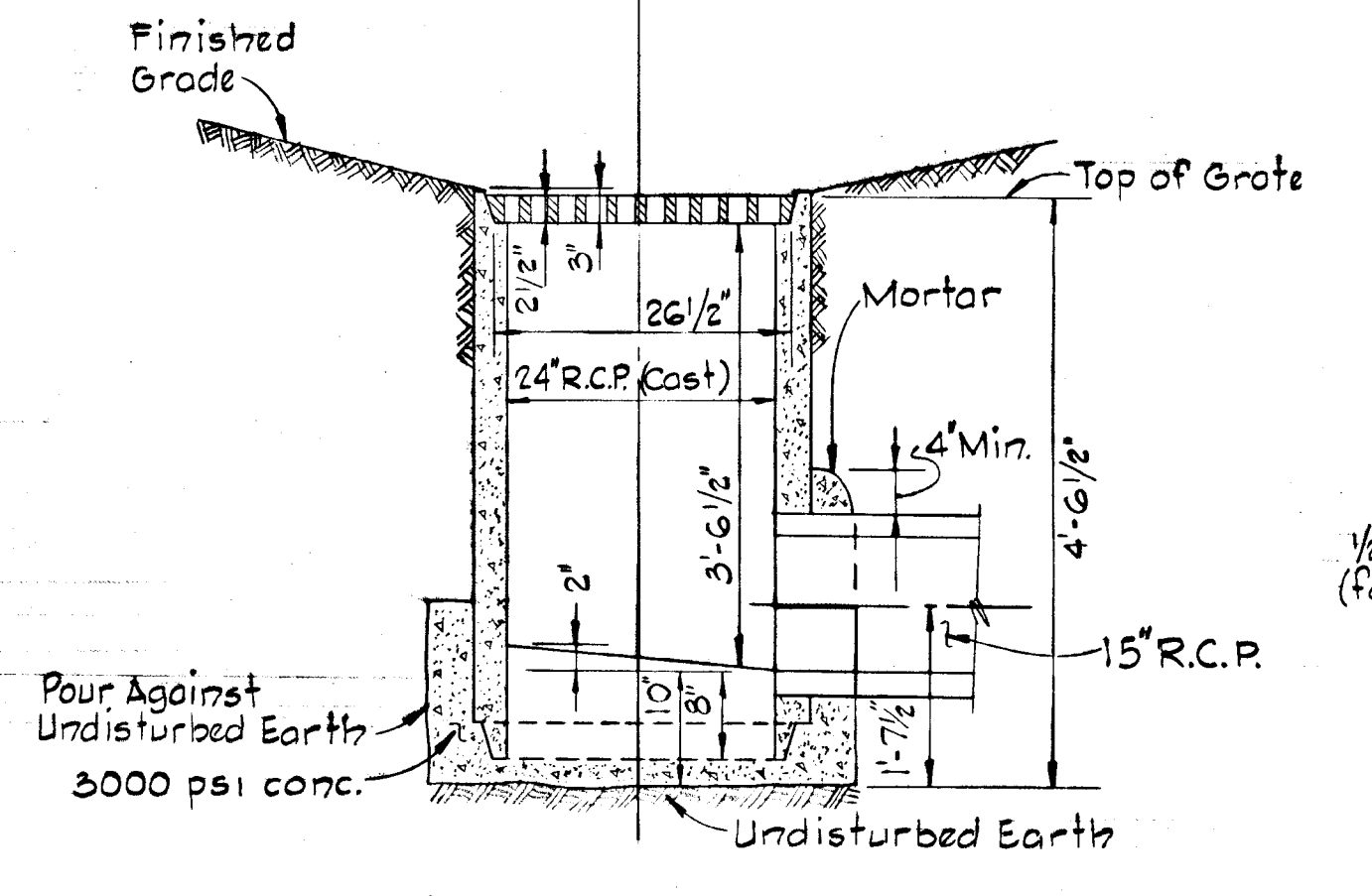
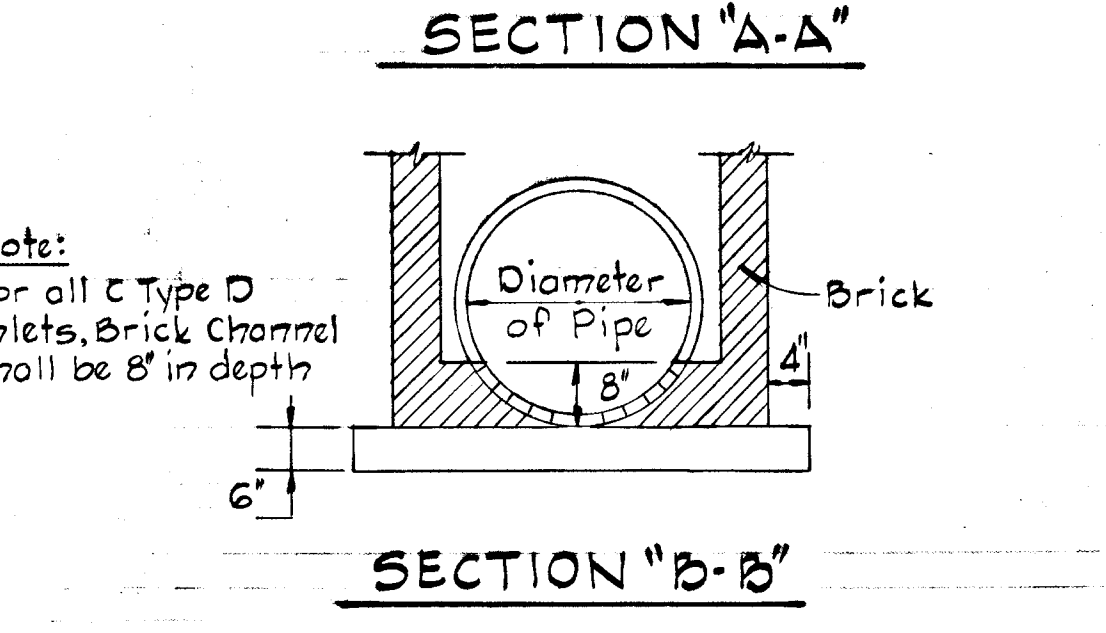
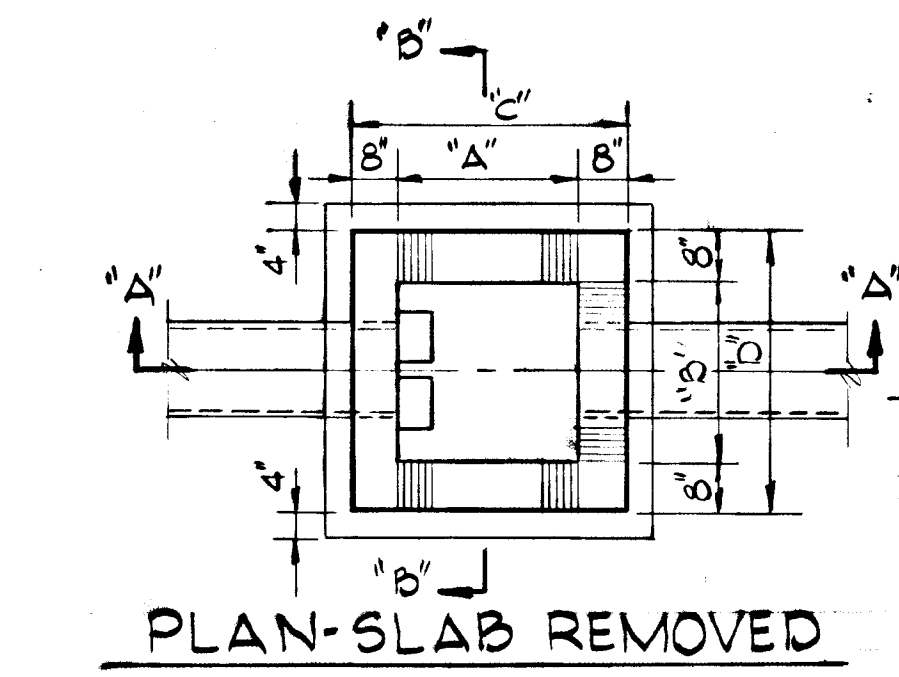
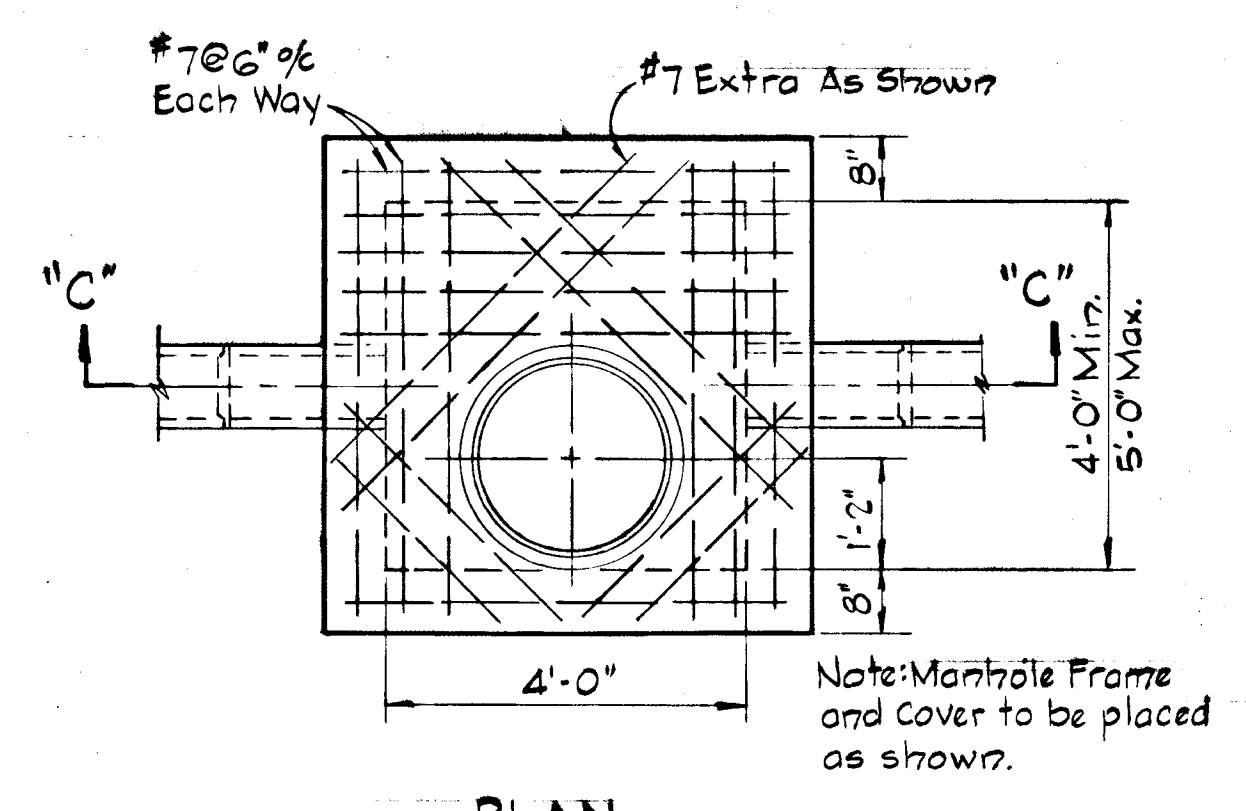
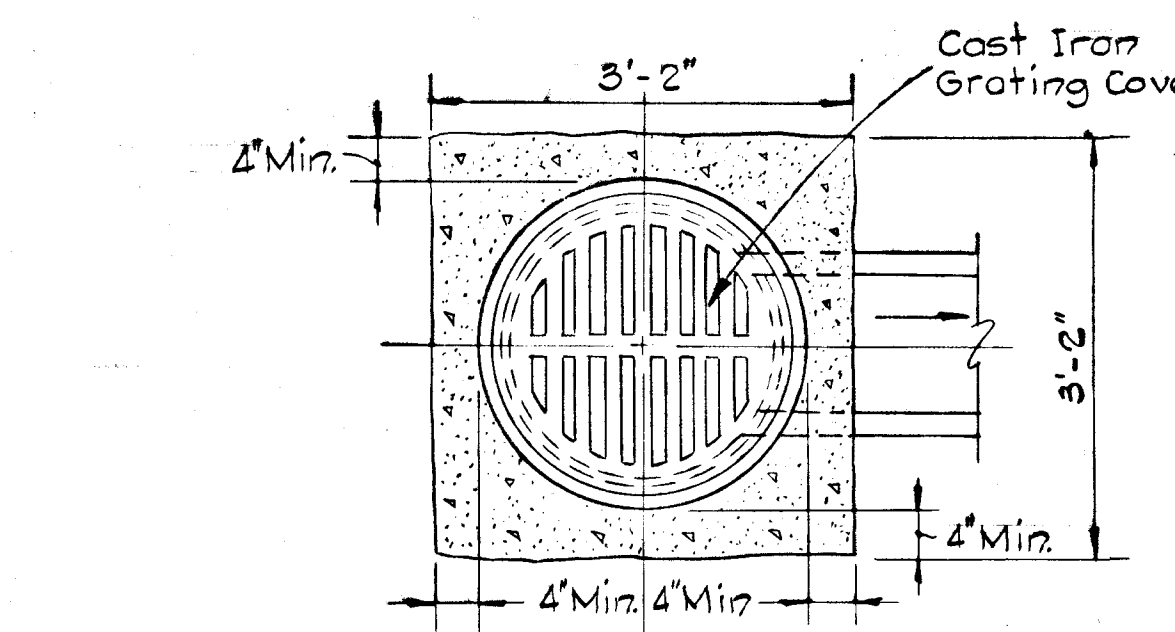
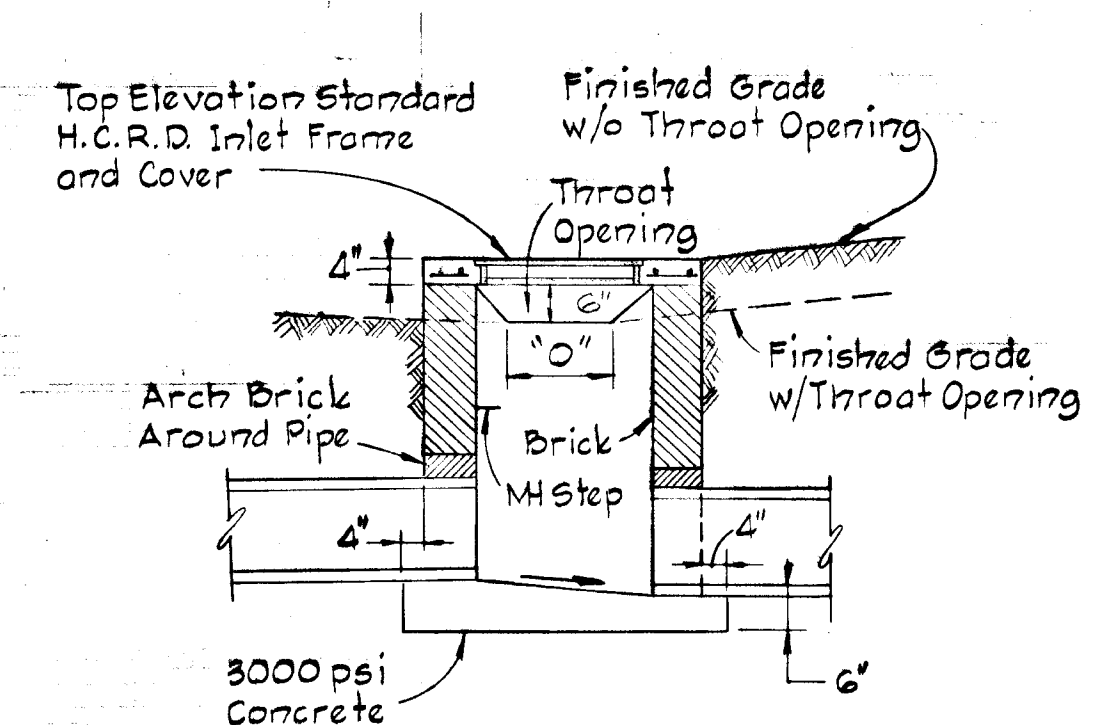
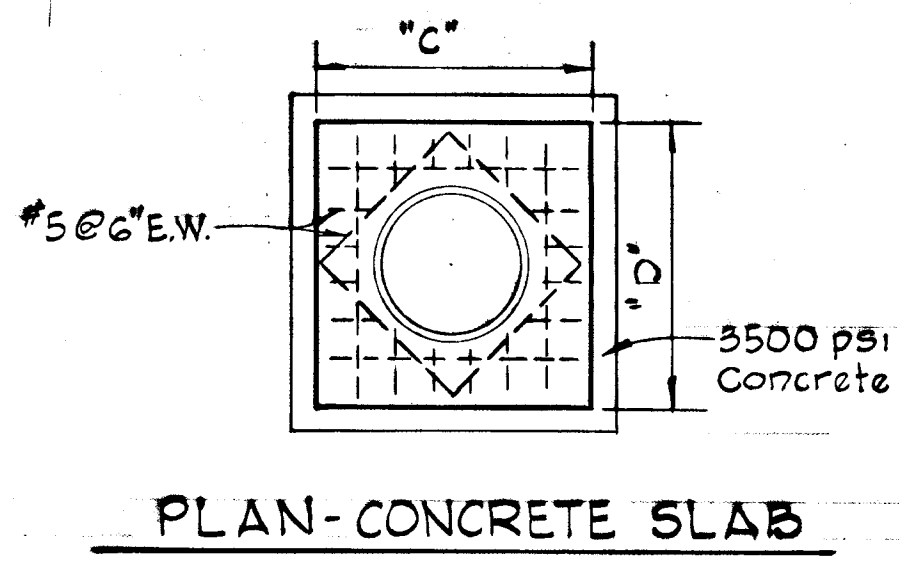
Kenneth A. McCord
KENNETH A. McCORD
Registered Engineer
No. 1974





PROFILES

Scales: Hor. 1"=50', Ver. 1"=5'

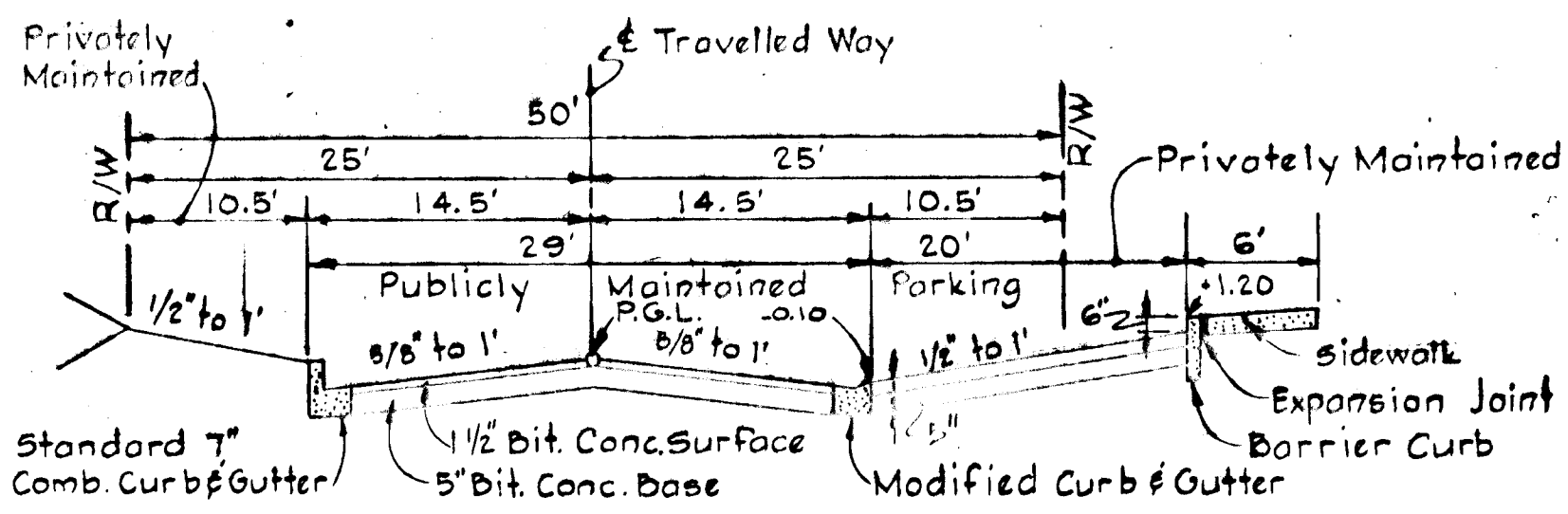


INLET	"A"	"B"	"C"	"D"	"O"
I-13	3'-0"	3'-0"	4'-4"	4'-4"	2'-0"
I-16	2'-9"	2'-9"	4'-1"	4'-1"	1'-9"

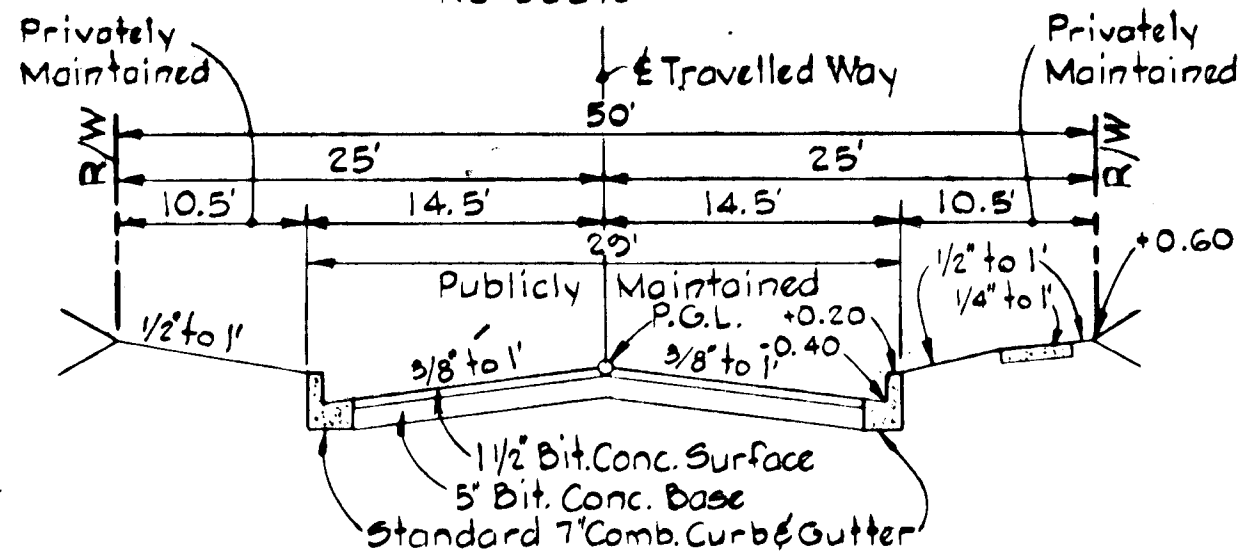
DETAIL - C TYPE "D" INLET
 No Scale

APPROVED
 DIVISION OF LAND DEVELOPMENT AND TRANSPORTATION PLANNING
 HOWARD COUNTY, MARYLAND
 DATE 5-13-76
[Signature]

Rev. Date	Rev. No.	Revision Description
COLUMBIA 6 th ELECTION DISTRICT HOWARD COUNTY, MARYLAND OWNER AND DEVELOPER HOWARD HOMES COMMUNITIES, INC. PROJECT AREA VILLAGE OF OWEN BROWN SECTION 1, AREA 1 - RESUBDIVISION OF PARCEL E-4 PROJECT TITLE STORM DRAIN PROFILES AND SPECIAL DETAILS SCALE: AS SHOWN DATE: May 24, 1976 WHITMAN, REQUARDT & ASSOCIATES ENGINEERS BALTIMORE, MARYLAND 21202 <i>Kenneth A. Mc Cord</i> KENNETH A. MC CORD Registered Engineer No. 1974		



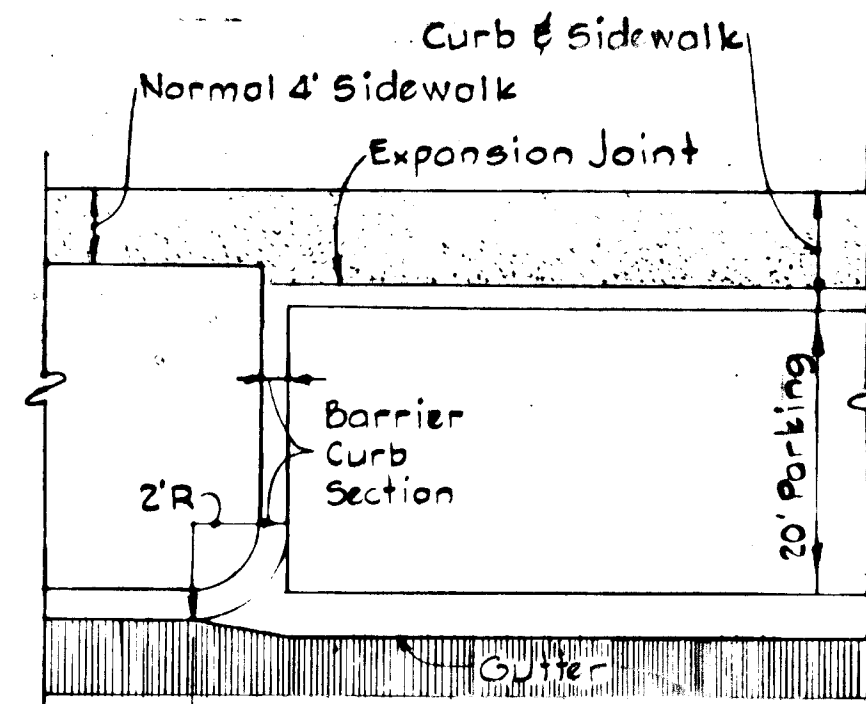
**TYPICAL SECTION
PARKING ADJACENT TO 29' PAVING**
No Scale



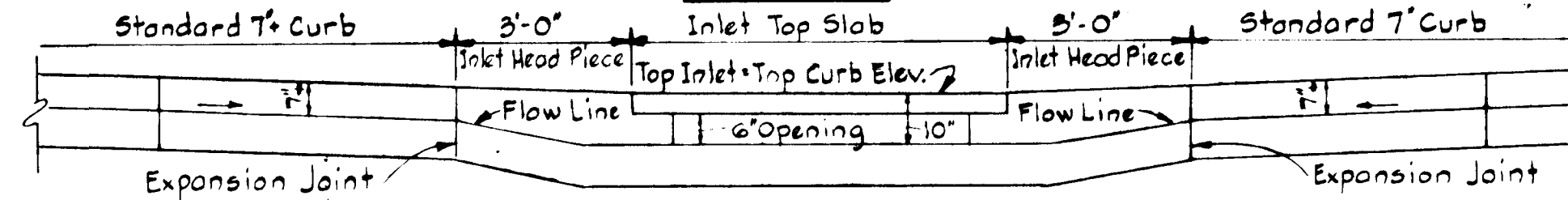
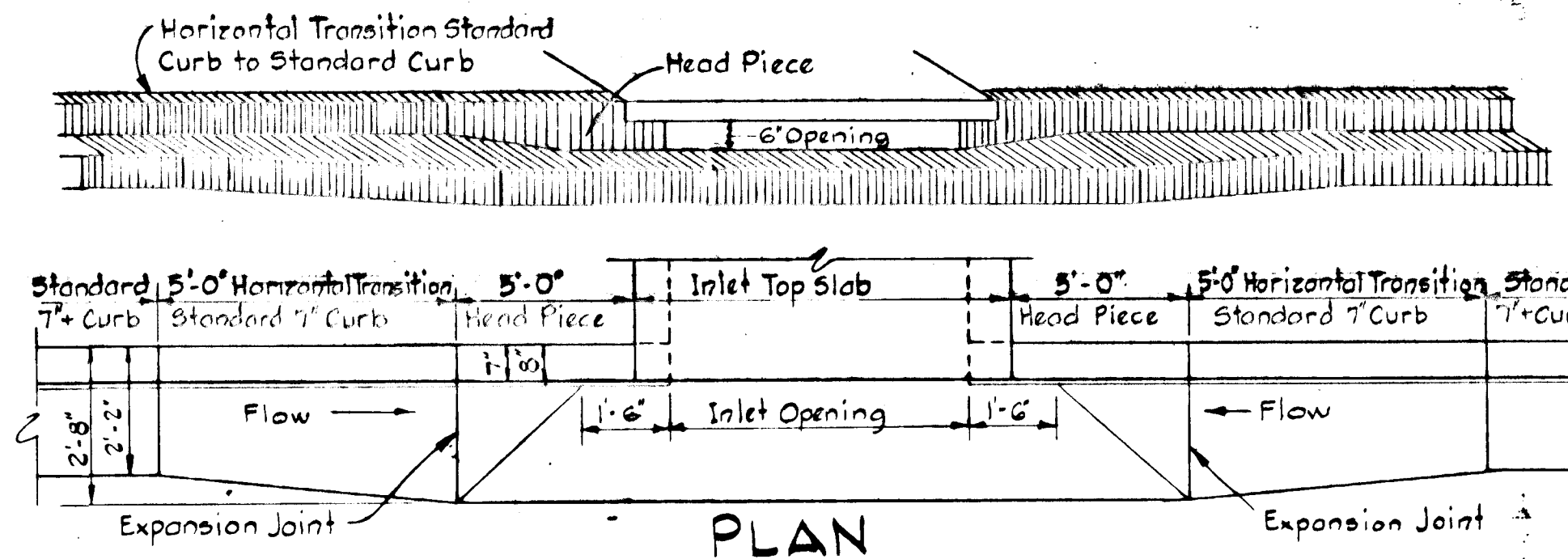
**TYPICAL SECTION
50' R/W - 29' PAVING**
No Scale

NOTES:

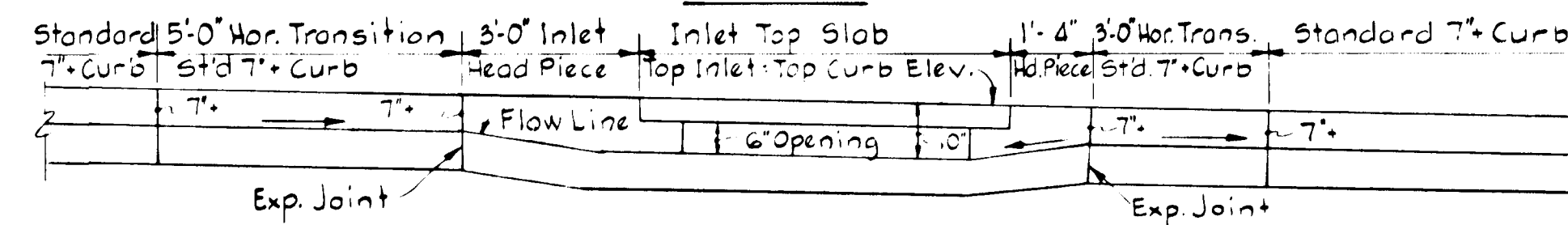
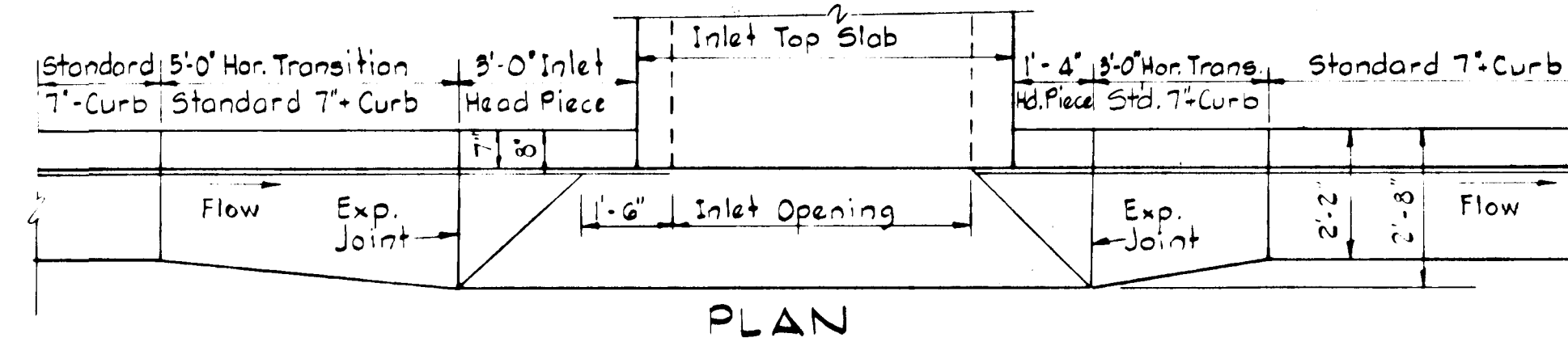
1. Standard 7" Comb. and Modified Curb and Gutter shall be in accordance with County Standard D-40, Page 55.
2. Paving (6 1/2") shall be in accordance with County Standard D-11, Page 66.
3. Transition from Standard 7" Comb. Curb and Gutter to Modified Curb and Gutter shall be in accordance with detail shown on this sheet.
4. Tack Coat is required in accordance with Section C-31-4 of the Howard County Road Construction Code and Standard Spec.
5. Base will be primed in accordance with C-30-3 as provided in the Howard County Road Construction Code and Standard Spec.
6. Paving (5") shall be in accordance with County Standard D-13, Page 68.
7. Sidewalks shall be in accordance with County Standard D-14, Page 69.



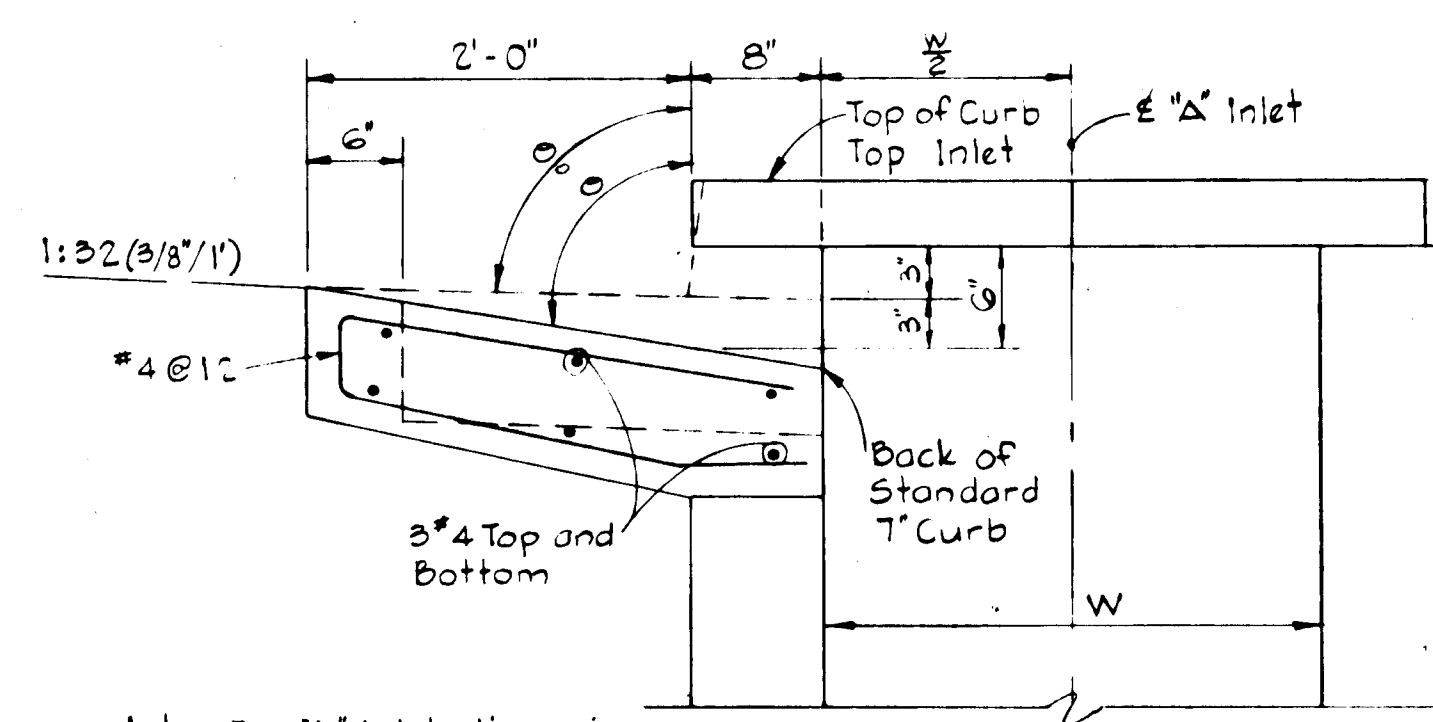
CURB & GUTTER TRANSITION DETAIL
No Scale



**SECTION ALONG FLOW LINE
SUMPED 'A' INLETS - STANDARD CURB**

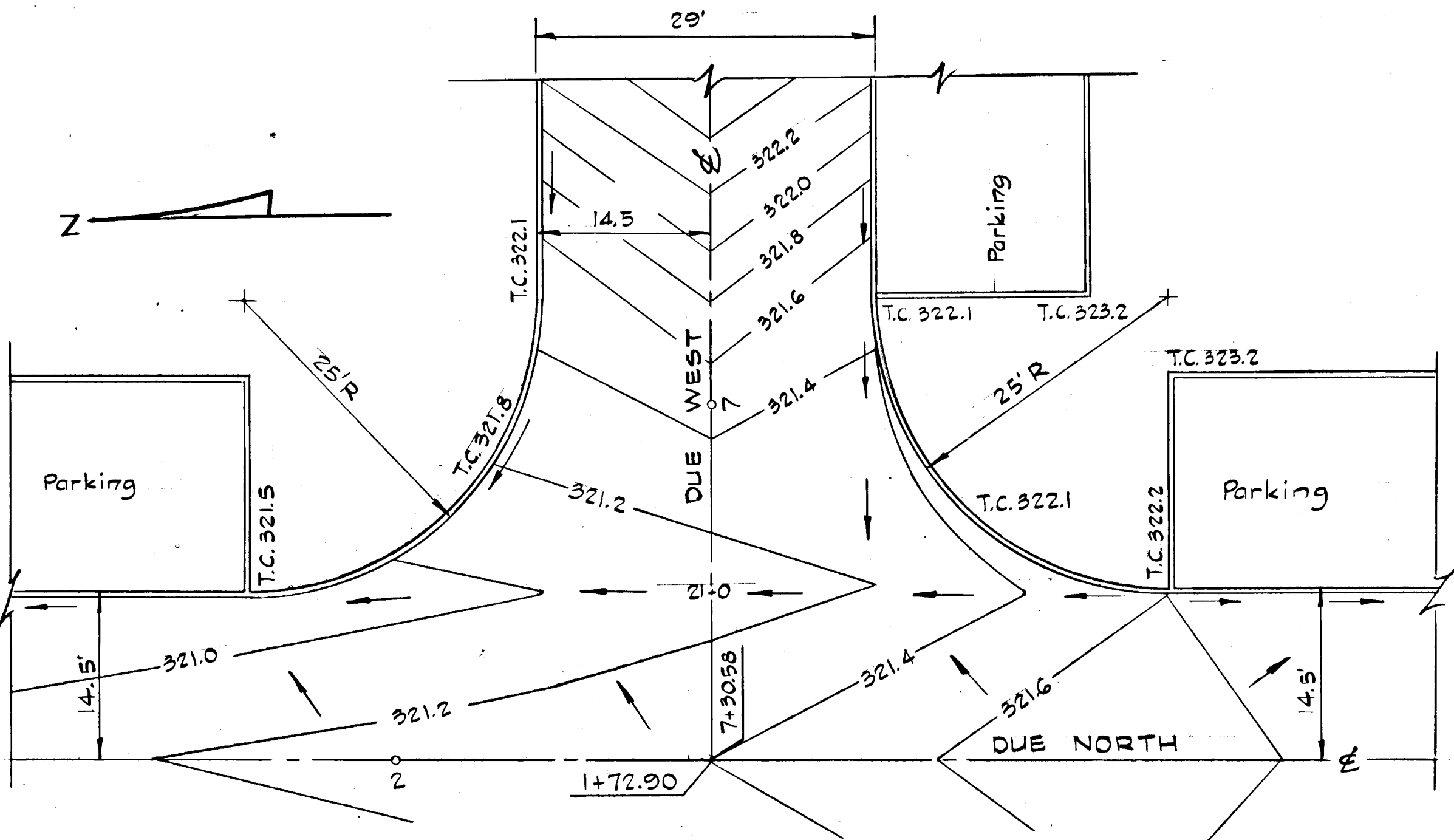


**SECTION ALONG FLOW LINE
'A' INLETS - STANDARD CURB**



Note: For 'A' Inlet dimensions and structural details, see standard Howard County Drawing 64-A page 119-A

SECTION - 'A' INLET STANDARD CURB



GRADING PLAN - KERRY HILL COURT INTERSECTION
Scale: 1" = 20'

DEPARTMENT OF PUBLIC WORKS

2420 Willard Ave. N.W.
CHIEF, BUREAU OF HIGHWAYS DATE: 6/4/76

OFFICE OF PLANNING AND ZONING

J.P. Lawson
CHIEF, DIVISION OF LAND DEVELOPMENT AND TRANSPORTATION PLANNING DATE: 5/28/76

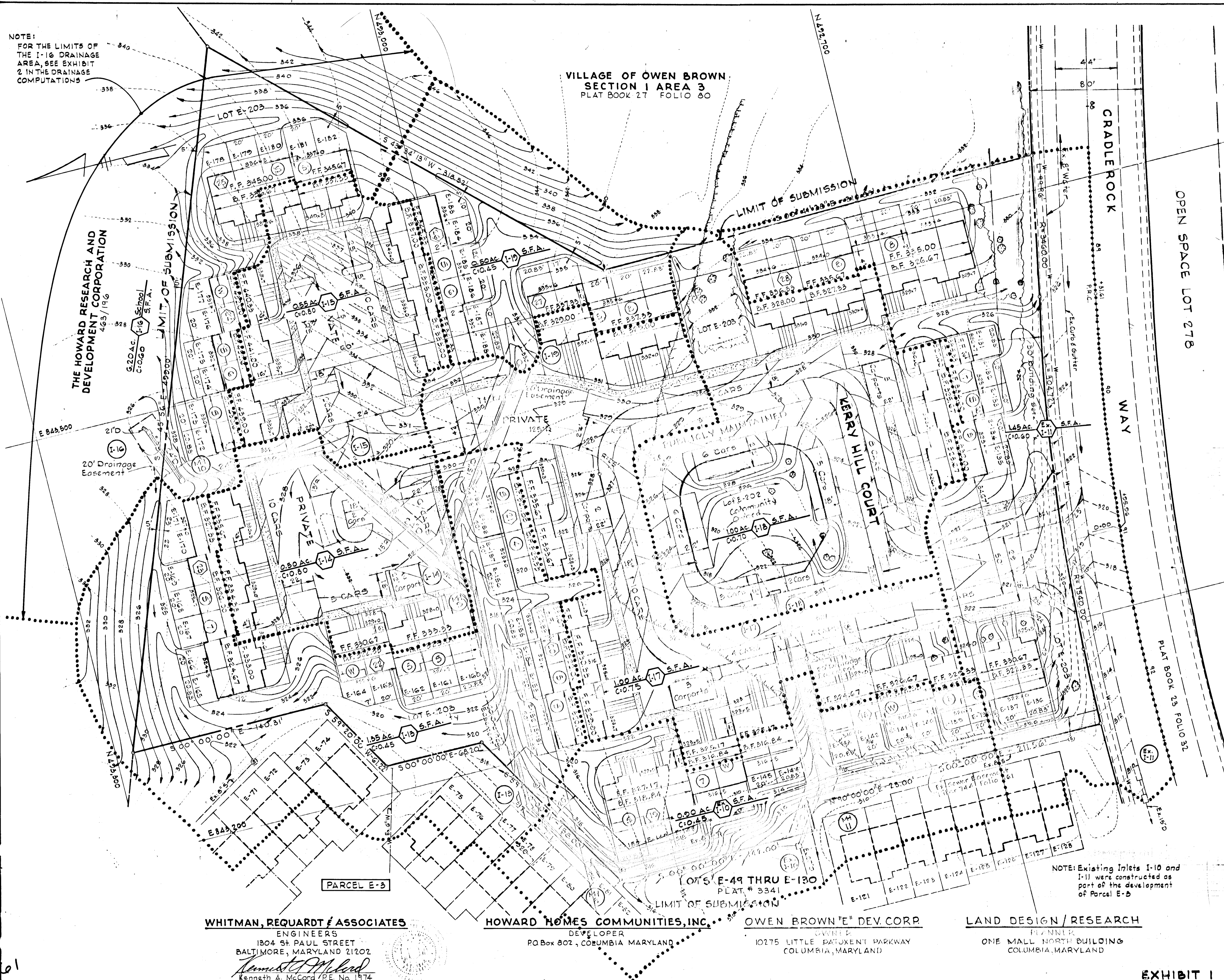
APPROVED
DIVISION OF LAND DEVELOPMENT
AND TRANSPORTATION PLANNING
HOWARD COUNTY, MARYLAND
DATE: 5-13-76
J.P.L.

Rev. Date	Rev. No.	Revision Description
COLUMBIA		
6 TH ELECTION DISTRICT HOWARD COUNTY, MARYLAND		
OWNER and DEVELOPER HOWARD HOMES COMMUNITIES, INC.		
PROJECT AREA VILLAGE OF OWEN BROWN SECTION 1, AREA 1 Resubdivision of Parcel 'E-4' PROJECT TITLE		
STANDARD DETAILS AND SPECIAL DETAIL		
Scale: As Shown Date: May 24, 1976		
WHITMAN, REQUARDT & ASSOCIATES ENGINEERS BALTIMORE, MARYLAND 21202		
<i>Kenneth A. McCord</i> KENNETH A. MCCORD Registered Engineer No. 1974		

NOTE:
FOR THE LIMITS OF
THE I-16 DRAINAGE
AREA, SEE EXHIBIT
2 IN THE DRAINAGE
COMPUTATIONS

VILLAGE OF OWEN BROWN
SECTION 1 AREA 3
PLAT BOOK 27 FOLIO 80

DEPARTMENT OF PUBLIC WORKS
H. W. Highland, Jr. 710 6/14/76
CHIEF, BUREAU OF HIGHWAYS DATE
OFFICE OF PLANNING AND ZONING
5/25/76
CHIEF, DIVISION OF LAND DEVELOPMENT AND TRANSPORTATION PLANNING DATE



PARCEL "F-1"

OPEN SPACE LOT 278

LEGEND

- 400- Existing Contour (2' Interval)
- 400- Proposed Contour (1' Interval)
- (10) Building Group Number
- (10) Number of Dwellings in Building Group
- (10) Lot Number
- A-16 Proposed First Floor Elevation
- FF 325.0 Proposed Spot Elevation
- EL 327.3 Existing Tree Line
- T.C. Top Curb
- 29' Travelled Way (to be Publicly Maintained)
- Concrete Walk
- Mocadam Walk
- Walk (By Others)
- Trees To Be Preserved

Reference:
See Plans and Drainage Computations for the Village of Owen Brown, Section 1 Area 1, Resubdivision of Parcel E-3, by Whitman, Requardt & Associates

APPROVED
MINISTER OF LAND DEVELOPMENT AND TRANSPORTATION PLANNING
HOWARD COUNTY, MARYLAND
DATE 5-13-76
[Signature]

Rev. Date	Rev. No.	Revision Description
COLUMBIA 6 TH ELECTION DISTRICT HOWARD COUNTY, MARYLAND		
OWNER and DEVELOPER HOWARD HOMES COMMUNITIES, INC.		
PROJECT AREA VILLAGE OF OWEN BROWN SECTION 1, AREA 1- RESUBDIVISION OF PARCEL E-4		
PROJECT TITLE DRAINAGE AREA MAP		
Scale: 1" = 50'		Date: May 24, 1976
WHITMAN, REQUARDT & ASSOCIATES ENGINEERS BALTIMORE, MARYLAND 21202		
[Signature] KENNETH A. McCORD Registered Engineer No. 1974		

WHITMAN, REQUARDT & ASSOCIATES
ENGINEERS
1804 ST PAUL STREET
BALTIMORE, MARYLAND 21202
[Signature]
Kenneth A. McCord / P.E. No. 1974

HOWARD HOMES COMMUNITIES, INC.
DEVELOPER
P.O. Box 802, COLUMBIA, MARYLAND

OWEN BROWN "E" DEV. CORP.
OWNER
10275 LITTLE PATUXENT PARKWAY
COLUMBIA, MARYLAND

LAND DESIGN / RESEARCH
PLANNER
ONE MALL NORTH BUILDING
COLUMBIA, MARYLAND

NOTE: Existing Inlets I-10 and I-11 were constructed as part of the development of Parcel E-3

EXHIBIT I