

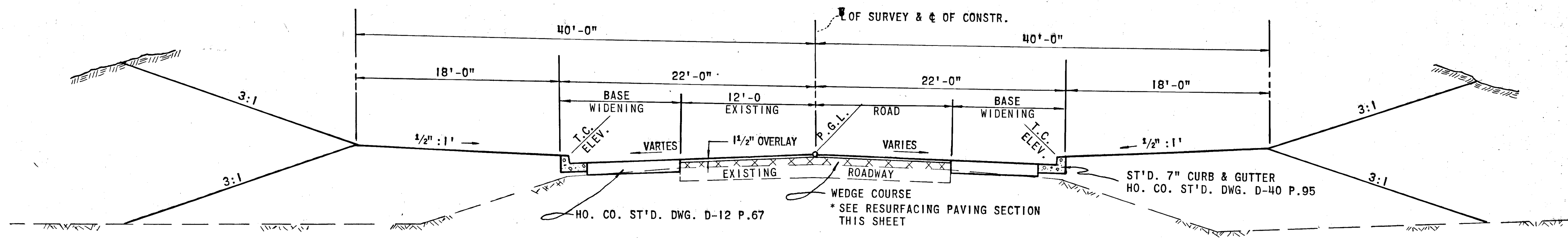
OAKLAND MILLS ROAD

STA. 101+00 TO STA. 107+47.73 BEGIN TRANSITION

NEW CONSTRUCTION

STA. 101+00 TO STA. 108+32.73

SCALE: 1" = 6'-0"

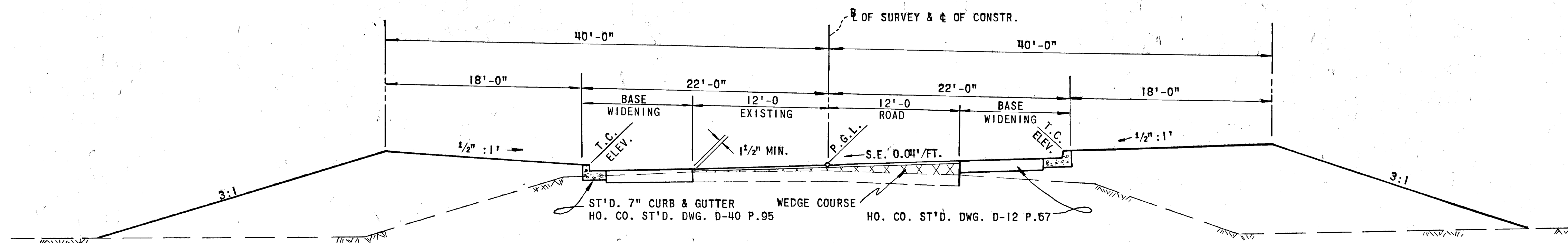


OAKLAND MILLS ROAD

STA. 108+32.73 TO STA. 113+81.84

BASE WIDENING & RESURFACING SECTION

SCALE: 1" = 6'-0"



OAKLAND MILLS ROAD

STA. 113+81.84 TO STA. 116+50

BASE WIDENING & RESURFACING SECTION

SCALE: 1" = 6'-0"

BITUMINOUS CONCRETE SURFACE	1 1/2" BAND C-3	FINAL PHASE
BITUMINOUS CONCRETE BINDER	3" BAND C-2	FIRST PHASE
BITUMINOUS CONCRETE BASE	6" BAND C-2 OR G-3	

CLEARING AND GRADING	ARTICLE C-1
SUBGRADE	ARTICLE C-2
BASE COURSE	ARTICLE C-31 OR C-33
BINDER COURSE	ARTICLE C-31
SURFACE COURSE	ARTICLE C-31

1. BASE WILL BE PRIMED IN ACCORDANCE WITH C-30-3 AS PROVIDED IN THE HOWARD COUNTY ROAD CONSTRUCTION CODE AND STANDARD SPECIFICATIONS.
2. TACK COAT IS REQUIRED IN ACCORDANCE WITH SECTION C-31-4 OF THE HOWARD COUNTY ROAD CONSTRUCTION CODE AND STANDARD SPECIFICATIONS.
3. TO BE CONSTRUCTED IN ACCORDANCE WITH THE HOWARD COUNTY ROAD CONSTRUCTION CODE AND SPECIFICATIONS.

SECTION D-12

DEPARTMENT OF PUBLIC WORKS	
<i>J. A. Malleand</i>	1/23/75
CHIEF, BUREAU OF HIGHWAYS	DATE
OFFICE OF PLANNING AND ZONING	
<i>J. T. J. Jr.</i>	1/23/75
CHIEF, DIVISION OF LAND DEVELOPMENT AND TRANSPORTATION PLANNING	DATE

GREEN ASSOCIATES, INC.
CONSULTING ENGINEERS
TOWSON, MARYLAND

7/23/74 1 REVISED TO COMMENTS OF SEP. 6, 1973

Rev. Date Rev. No. Revision Description

C O L U M B I A
M A R Y L A N D
6TH ELECTION DISTRICT HOWARD COUNTY

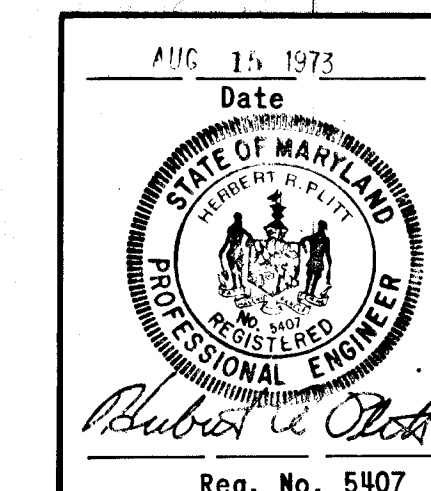
OWNER AND DEVELOPER
HOWARD RESEARCH AND DEVELOPMENT CORPORATION
COLUMBIA, MARYLAND

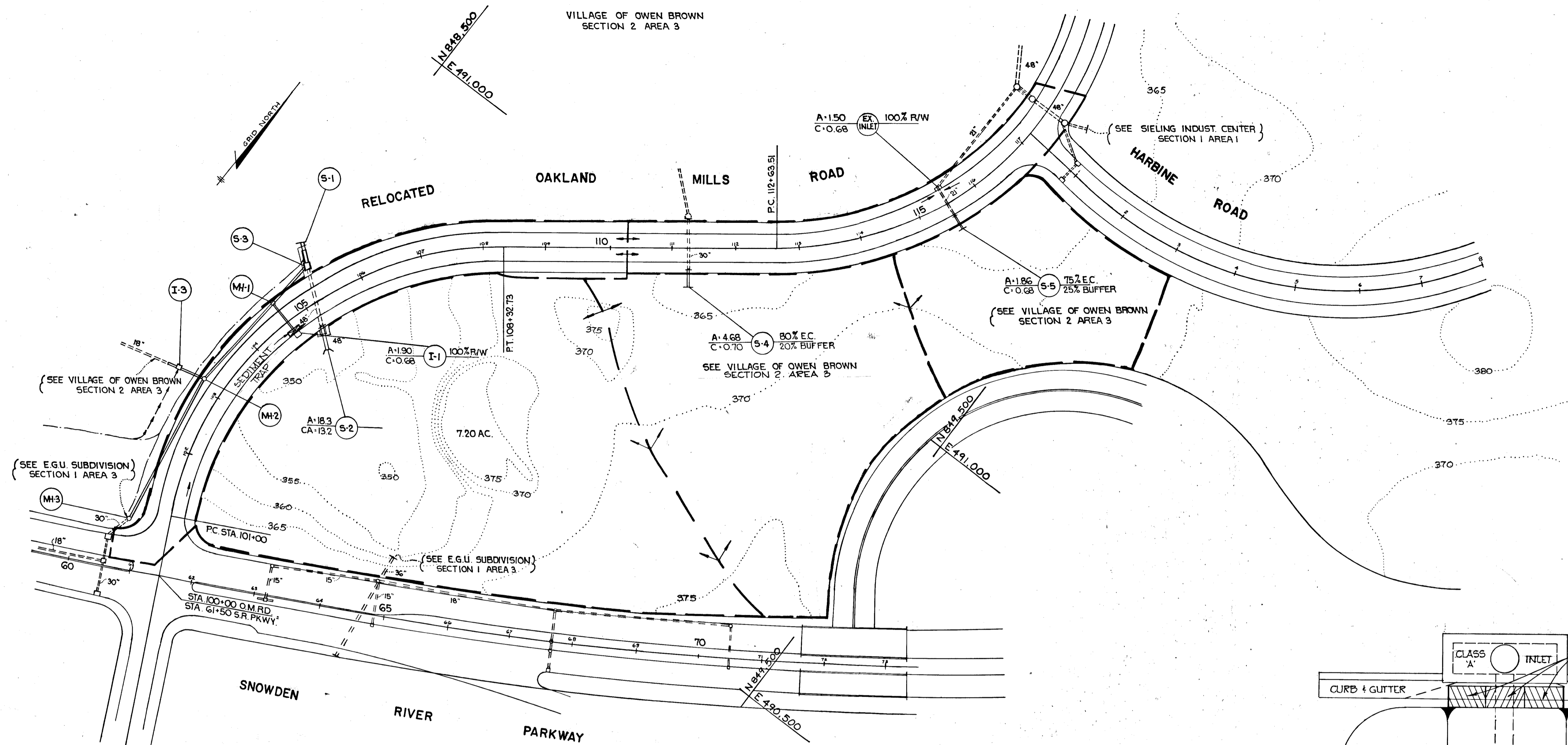
PROJECT AREA
E. G. U. SUBDIVISION
SECTION 1 AREA 4

PROJECT TITLE
OAKLAND MILLS ROAD
TYPICAL SECTION

Des. By	K. A. L.	Scale	AS SHOWN	Dwg. No.	2 of 6
Drn. By	J. T. J. JR.	Date	AUG 15, 1973	C.C.F. NO.	
Chk. By	J. T. J.	Approved			

APPROVED
DIVISION OF LAND DEVELOPMENT
AND TRANSPORTATION PLANNING
HOWARD COUNTY, MARYLAND
DATE 10/30/74
J. T. J.





SEDIMENT CONTROL NOTES

1. THE DEVELOPER SHALL NOTIFY THE HOWARD COUNTY SOIL CONSERVATION DISTRICT AT LEAST 24 HOURS PRIOR TO ANY CONSTRUCTION IN THIS AREA. (465-5000)
2. ALL SEDIMENT CONTROL STRUCTURES SHALL BE BUILT PRIOR TO CONSTRUCTION AND WILL REMAIN IN PLACE UNTIL PERMISSION FOR THEIR REMOVAL HAS BEEN GRANTED BY THE HOWARD SOIL CONSERVATION DISTRICT.
3. ALL GRADED AREAS SHALL BE STABILIZED BY SEEDING AND MULCHING IN ACCORDANCE WITH THE FOLLOWING:
 - A. SITE PREPARATION
 - 1) APPLY PULVERIZED LIMESTONE AT THE RATE OF 2 TONS PER ACRE.
 - 2) APPLY COMMERCIAL FERTILIZER 10-10-10 AT THE RATE OF 1/2 TON PER ACRE.
 - 3) WORK BOTH INTO SOIL AND PREPARE AREA TO BE SEEDED WITH A YORK RAKE.
 - B. SEEDING
 - 1) SEED ALL DISTURBED AREAS WITH KENTUCKY 31 TALL FESCUE @ 120 LBS. PER ACRE AND ANNUAL RYE GRASS @ 15LBS./ACRE.
 - 2) THE SEEDED AREA SHALL BE RAKED WITH A MINIMUM 2 PASSES WITH A YORK RAKE, COVERED AND COMPACTED WITH A CULTIPACKER OR OTHER APPROVED METHOD.
 - C. MULCHING
 - 1) SEEDED AREAS SHALL BE UNIFORMLY MULCHED IMMEDIATELY AFTER SEEDING WITH UNWEATHERED SMALL GRAIN STRAW AT THE RATE OF 1 1/2 TO 2 TONS PER ACRE.
 - 2) TIE MULCH WITH LIQUID ASPHALT AT 0.1 GAL. PER SQ. YD. OR EMULSIFIED ASPHALT AT 0.04 GAL. PER SQ. YD. OR MULCH NETTING.

ENGINEER'S CERTIFICATE

I certify that these plans I through II for Erosion and Sediment Control represent practical and workable plans based on my personal knowledge of the site conditions and that they were prepared in accordance with the requirements of the Howard Soil Conservation District.

Robert C. Olt
 Signature of Engineer 12-12-74
 Date

DEVELOPER CERTIFICATE

I hereby certify that all development and/or construction will be done in accordance with these plans of development and plans for Erosion and Sediment Control, and I also authorize periodic on-site inspection by the Howard County Soil Conservation District or their authorized agents, as deemed necessary.

Deviation from these plans will not be made unless authorized by the Howard Soil Conservation District.

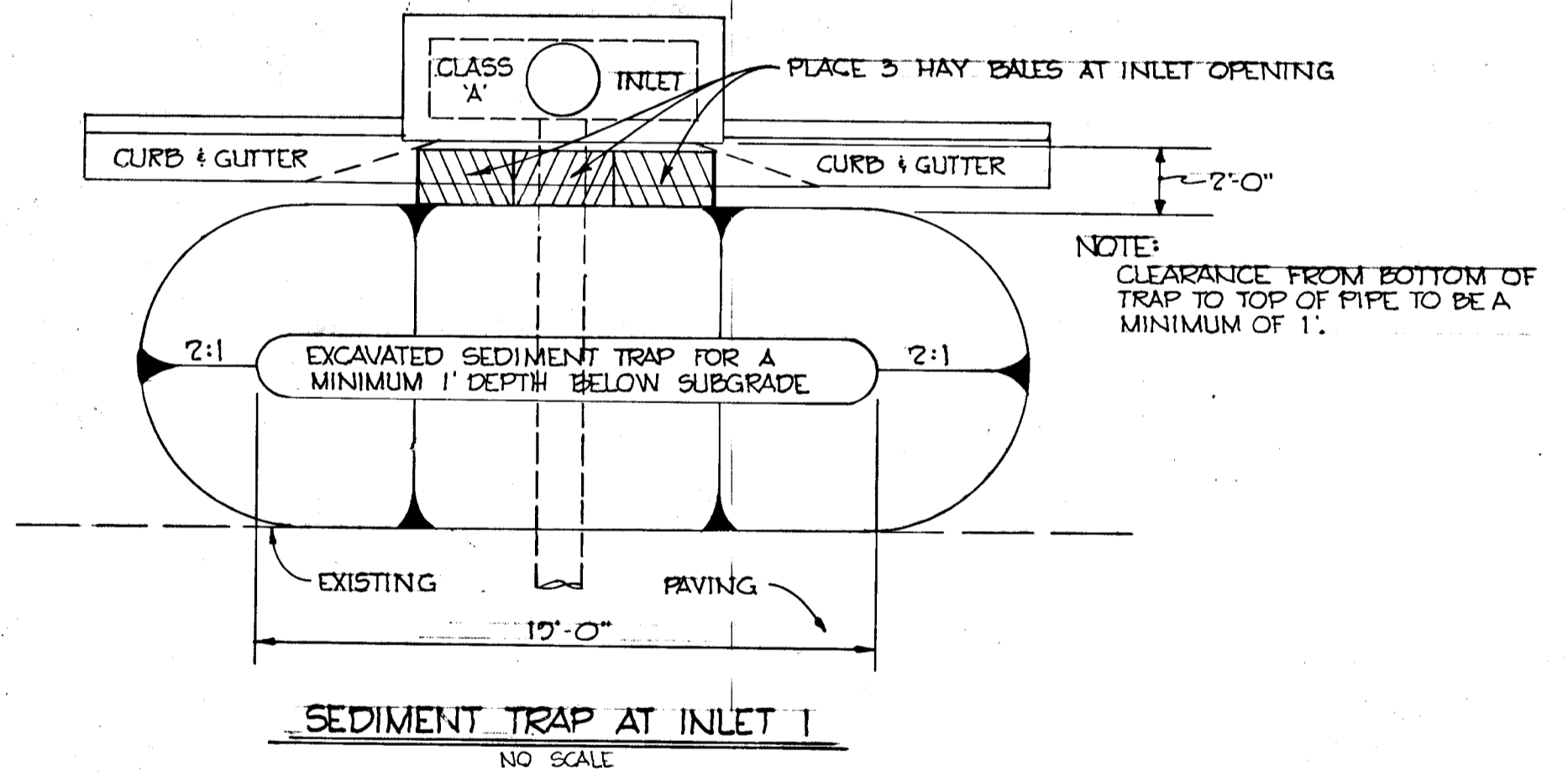
John L. Zepher
 Signature of Developer 12/17/74
 Date

Reviewed for Howard Name S.C.D. and meets Technical Requirements

James M. Hill
 Signature 1-10-74
 U.S. Soil Conservation Service Date

These Development Plans are approved for Soil Erosion and Sediment Control by the Howard Soil Conservation District.

Robert L. Zepher
 Approved 1-10-74
 Howard S.C.D. Date



APPROVED
 DIVISION OF LAND DEVELOPMENT
 AND TRANSPORTATION PLANNING
 HOWARD COUNTY, MARYLAND
 DATE 10/30/74
JAC

GREEN ASSOCIATES, INC.
 CONSULTING ENGINEERS
 TOWSON, MARYLAND

7/23/74	1	REVISED TO COMMENTS OF SEPT. 6, 1973
Rev. Date	Rev. No.	Revision Description

C O L U M B I A
 M A R Y L A N D
 6TH ELECTION DISTRICT HOWARD COUNTY

OWNER AND DEVELOPER
 HOWARD RESEARCH AND DEVELOPMENT CORPORATION
 COLUMBIA, MARYLAND

PROJECT AREA E.G.U. SUBDIVISION
 SECTION 1 AREA 4

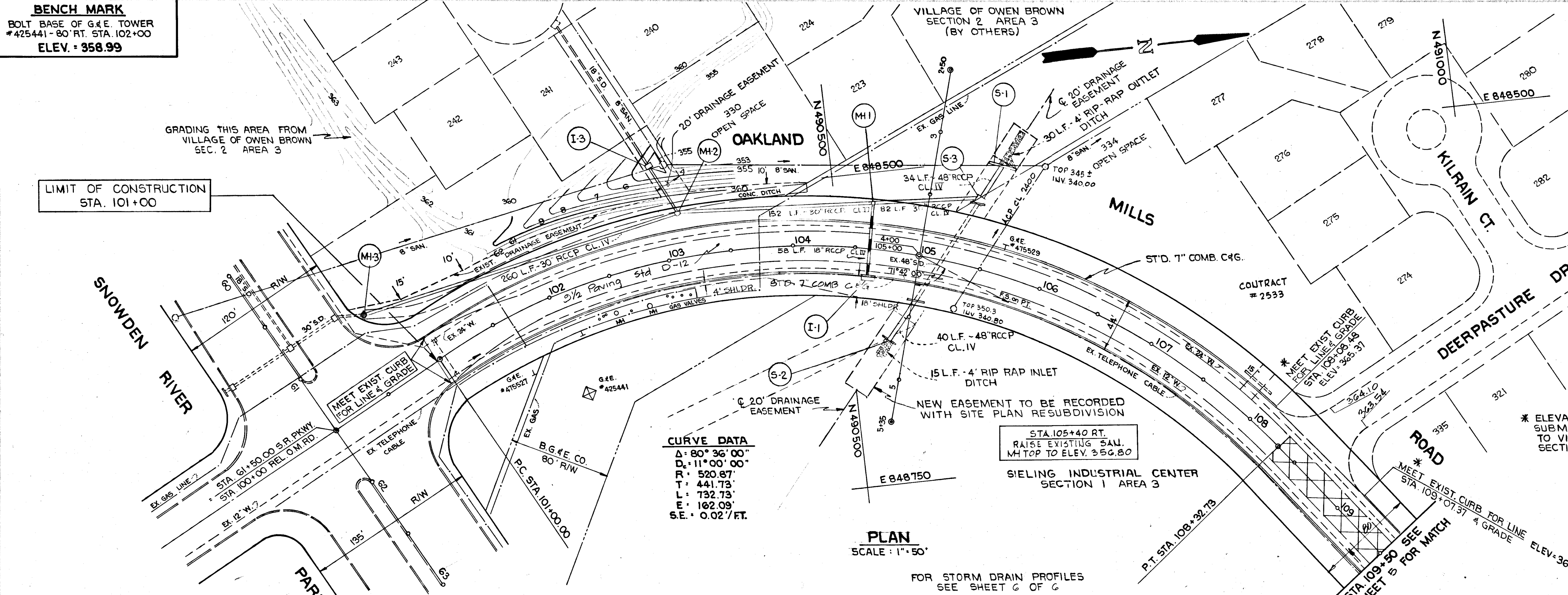
PROJECT TITLE SEDIMENT CONTROL PLAN AND
 DRAINAGE AREA MAP

Des. By	K.A.L.	Scale	1" = 100'	Dwg. No.	3 of 6
Drn. By	J.T.J. JR.	Date	AUG. 15, 1973	C.C.F. No.	
Chk. By	J.T.J.	Approved			

DEPARTMENT OF PUBLIC WORKS
A. M. McKeand 1/23/75
 CHIEF, BUREAU OF HIGHWAYS DATE
 OFFICE OF PLANNING AND ZONING
J.H. Lawson 1/20/75
 CHIEF, DIVISION OF LAND DEVELOPMENT AND TRANSPORTATION PLANNING DATE

AUG 15 1973
 Date
 STATE OF MARYLAND
 REGISTERED PROFESSIONAL ENGINEER
 Reg. No. 5407

BENCH MARK
BOLT BASE OF G & E TOWER
#425441 - 80' RT. STA. 102+00
ELEV. = 358.99



STRUCTURE SCHEDULE						
NO.	TYPE	LOCATION	INV. IN	INV. OUT	T.C.P. ELEV.	REMARKS
S-1	ST'D. C. ENDWALL	STA. 105+85 - 85' LT.		340.90		HO. CO. DWG. D. 52 PG. 107
S-2	ST'D. EM. SUP. WALL	STA. 104+88 - 72' RT.	344.18			HO. CO. DWG. D. 46 PG. 101
S-3	ST'D. JUNCTION BOX	STA. 105+36 - 53' LT.		341.50		HO. CO. DWG. D. 108 PG. 163
I-1	ST'D. A-10	STA. 104+61.07 - 22' RT.		351.43	355.43	HO. CO. DWG. 64-A PG. 119A
	" A-10					
MH-1	ST'D. MANHOLE	STA. 104+61.07 - 37' LT.	345.58		345.58	HO. CO. DWG. D. 103 PG. 158
MH-2	ST'D. MANHOLE	STA. 103+15 - 35' LT.	350.34		350.34	HO. CO. DWG. D. 103 PG. 158
MH-3	ST'D. MANHOLE	STA. 100+70 - 64' LT.	362.78		362.50	HO. CO. DWG. D. 103 PG. 158
I-3	ST'D. 'C' INLET	STA. 103 00 - 78' LT.	351.42		351.17	HO. CO. DWG. D. 64CPG. 119C

LEGEND:
- - - EX. GROUND 65' LT. BLDG. RESTRICTION LINE
- - - EX. GROUND 65' RT. BLDG. RESTRICTION LINE
- - - EXISTING GROUND @ ±
— FINISHED GRADE @ P.G.L.

NOTE: EXISTING UTILITIES TO BE ADJUSTED BY RESPECTIVE OWNERS.

CURVE DATA
Δ: 80° 36' 00"
D: 11° 00' 00"
R: 520.87'
T: 441.73'
L: 162.08'
S.E.: 0.02'/FT.

PLAN
SCALE: 1" = 50'

FOR STORM DRAIN PROFILES
SEE SHEET G OF G

STA. 101+00 TO STA. 108+73
NEW PAVING CONSTRUCTION
USING SECTION D-12 - SEE
TYPICAL SECTIONS

DEPARTMENT OF PUBLIC WORKS
A. H. McKeand
CHIEF, BUREAU OF HIGHWAYS
1/23/75
DATE

OFFICE OF PLANNING AND ZONING
W. A. Keenan
CHIEF, DIVISION OF LAND DEVELOPMENT
AND TRANSPORTATION PLANNING
1/23/75
DATE

AUG 15 1975
Date
REG. No. 5407

GREEN ASSOCIATES, INC.
CONSULTING ENGINEERS
TOWSON, MARYLAND

7/23/74 1 REVISED TO COMMENTS OF SEP. 6, 1973
8/5/74 2 REVISE GRADE

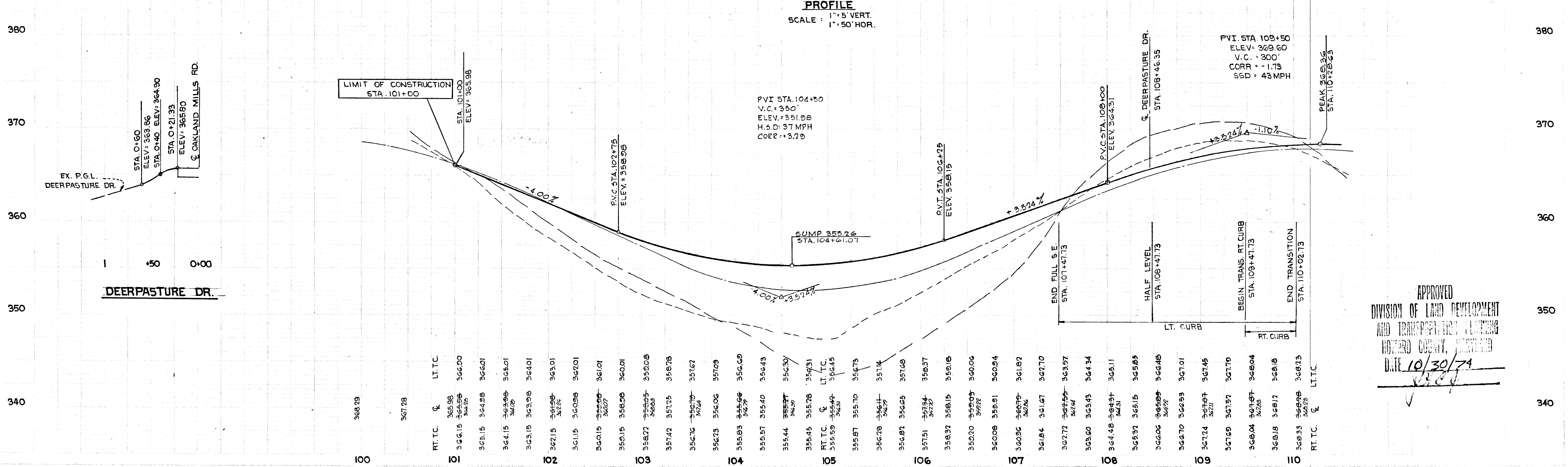
C O L U M B I A
M A R Y L A N D
6TH ELECTION DISTRICT HOWARD COUNTY

OWNER AND DEVELOPER
HOWARD RESEARCH AND DEVELOPMENT CORPORATION
COLUMBIA, MARYLAND

PROJECT AREA
E. G. U. SUBDIVISION
SECTION 1 AREA 4

PROJECT TITLE
OAKLAND MILLS ROAD
PLAN & PROFILE

Des. By K. A. L. Scale AS SHOWN Dwg. No. 1
Dwn. By K. A. L. Date AUG. 15, 1975 C.C.F. No.
Chk. By J. T. J. Approved



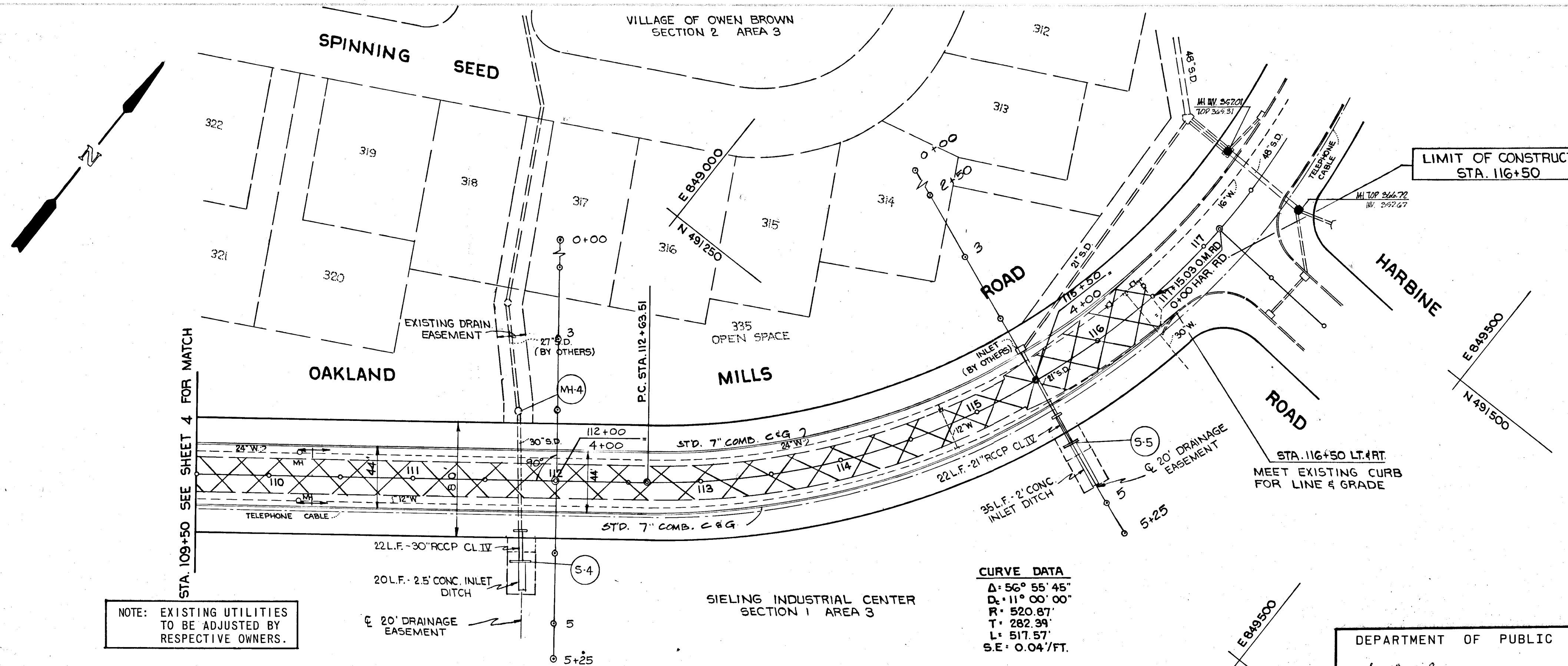
PROFILE
SCALE: 1" = 5' VERT.
1" = 50' HOR.

PVI STA. 104+50
V.C.: 350'
ELEV.: 351.08
H.S.D: 37 MPH
CORR.: +3.20

PVI STA. 108+50
ELEV.: 369.60
V.C.: 300'
CORR.: -1.73
SSD: 43 MPH

APPROVED
DIVISION OF LAND DEVELOPMENT
AND TRANSPORTATION PLANNING
HOWARD COUNTY, MARYLAND
DATE 10/30/74
[Signature]

#43



STRUCTURE		SCHEDULE				
NO.	TYPE	LOCATION	INV. IN	INV. OUT	T.C.P. ELEV.	REMARKS
S-4	ST'D. 'C' ENDWALL	STA. 111+75 - 58' RT.	359.64		362.17	HO. CO. DWG. D.52 PG. 107
MH-4	EXIST. MANHOLE	STA. 111+75 - 48' LT.	356.70	356.65	TOP 365.20	ADJUST TOP
S-5	ST'D. 'C' ENDWALL	STA. 115+50 - 50' RT.	366.66		369.11	HO. CO. DWG. D.52 PG. 107

NOTE: EXISTING UTILITIES TO BE ADJUSTED BY RESPECTIVE OWNERS.

LEGEND:
 --- EX. GROUND 65' LT. BLDG. RESTRICTION LINE
 --- EX. GROUND 65' RT. BLDG. RESTRICTION LINE
 --- EXISTING GROUND @ ±
 --- FINISHED GRADE @ P.G.L.

WEDGE 4 1/2" OVERLAY

STA. 108+32.73 TO 116+50
 BASE WIDENING USING PAVING
 SECTION D-12, SEE TYPICAL SECTIONS

CURVE DATA
 Δ: 56° 55' 45"
 D: 11° 00' 00"
 R: 520.87'
 T: 282.94'
 L: 517.57'
 S.E.: 0.041/FT.

PLAN
 SCALE: 1" = 50'

FOR STORM DRAIN PROFILES
 SEE SHEET 6 OF 6

DEPARTMENT OF PUBLIC WORKS
 OFFICE OF PLANNING AND ZONING
 AUG 15 1973
 DATE

STATE OF MARYLAND
 PROFESSIONAL ENGINEER
 REG. NO. 5407

GREEN ASSOCIATES, INC.
 CONSULTING ENGINEERS
 TOWSON, MARYLAND

7/23/74 1 REVISED TO COMMENTS OF SEP. 6, 1973

Rev. Date Rev. No. Revision Description

C O L U M B I A
 M A R Y L A N D
 6TH ELECTION DISTRICT HOWARD COUNTY

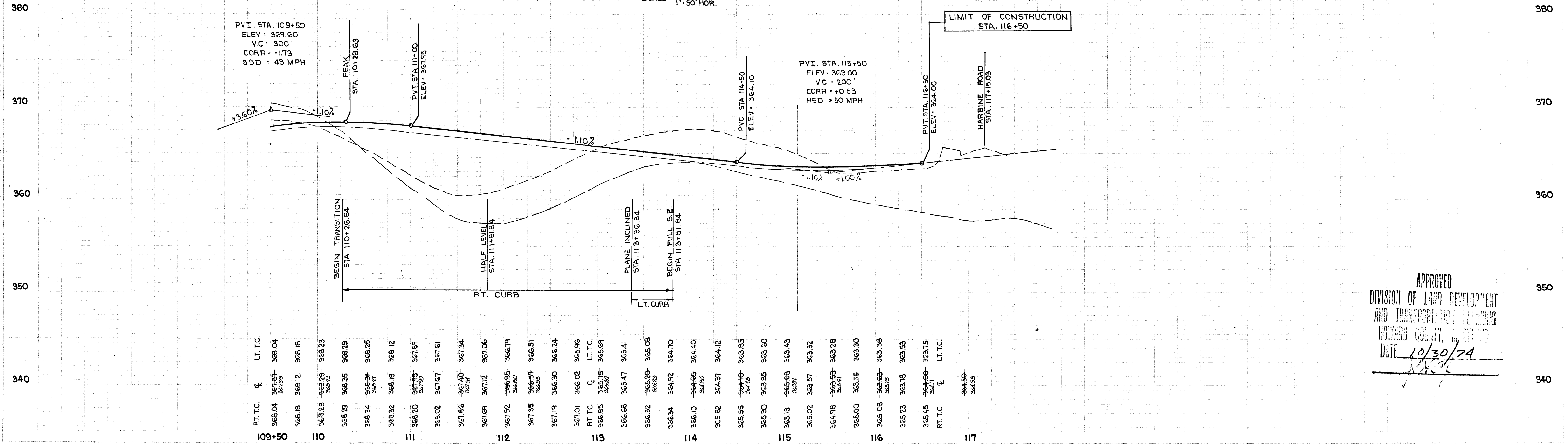
OWNER AND DEVELOPER
HOWARD RESEARCH AND DEVELOPMENT CORPORATION
 COLUMBIA, MARYLAND

PROJECT AREA
 E.G.U. SUBDIVISION
 SECTION 1 AREA 4

PROJECT TITLE
 OAKLAND MILLS ROAD
 PLAN & PROFILE

Des. By K.A.L. Scale AS SHOWN Dwg. No. 5 of 6
 Drn. By K.A.L. Date AUG 15, 1973 C.C.F. No.
 Chk. By J.T.J. Approved

PROFILE
 SCALE: 1" = 5' VERT.
 1" = 50' HOR.



APPROVED
 DIVISION OF LAND DEVELOPMENT
 AND TRANSPORTATION PLANNING
 HOWARD COUNTY, MARYLAND
 DATE 10/30/74
 [Signature]

