

SHEET INDEX	
SHEET NO.	DESCRIPTION
1	TITLE SHEET
2	HIGH HAY DRIVE
3	HEATHERTOE LANE, TOOKS WAY AND BARROW DOWNS
4	BUCKLEBERRY PATH AND ELFSTONE WAY
5	LINEAR PROFILES
6	DRIVEWAYS B, E, F AND H
7	ROADWAY AND DRAINAGE DETAILS
8	DRAINAGE AREA MAP
9	STORM DRAIN PROFILES
10	Revised St. Dr. Profiles
11	SEDIMENT CONTROL PLAN

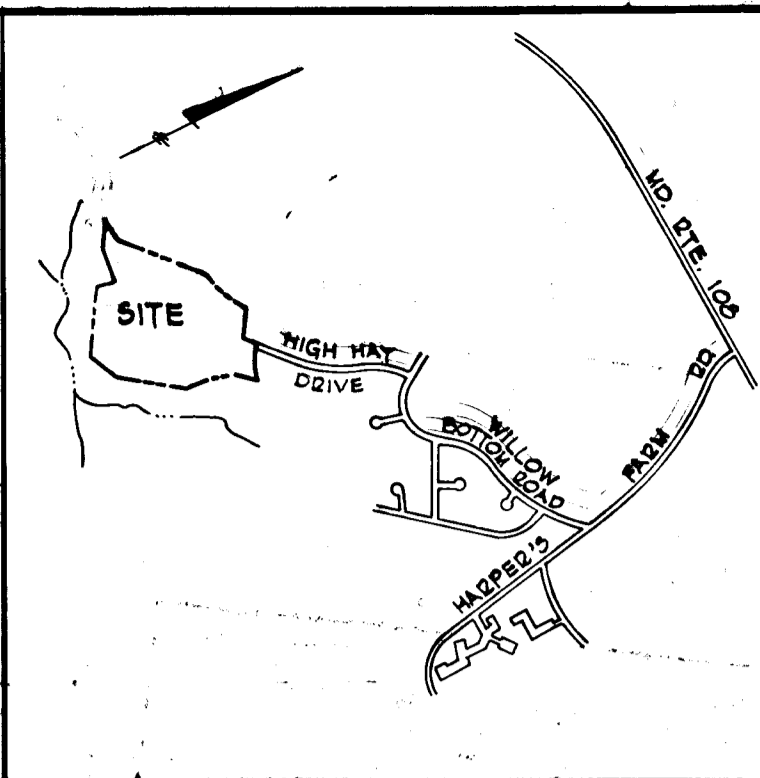
COLUMBIA

HOWARD COUNTY, MARYLAND
5TH ELECTION DISTRICT

ROAD CONSTRUCTION PLANS

VILLAGE OF HARPER'S CHOICE

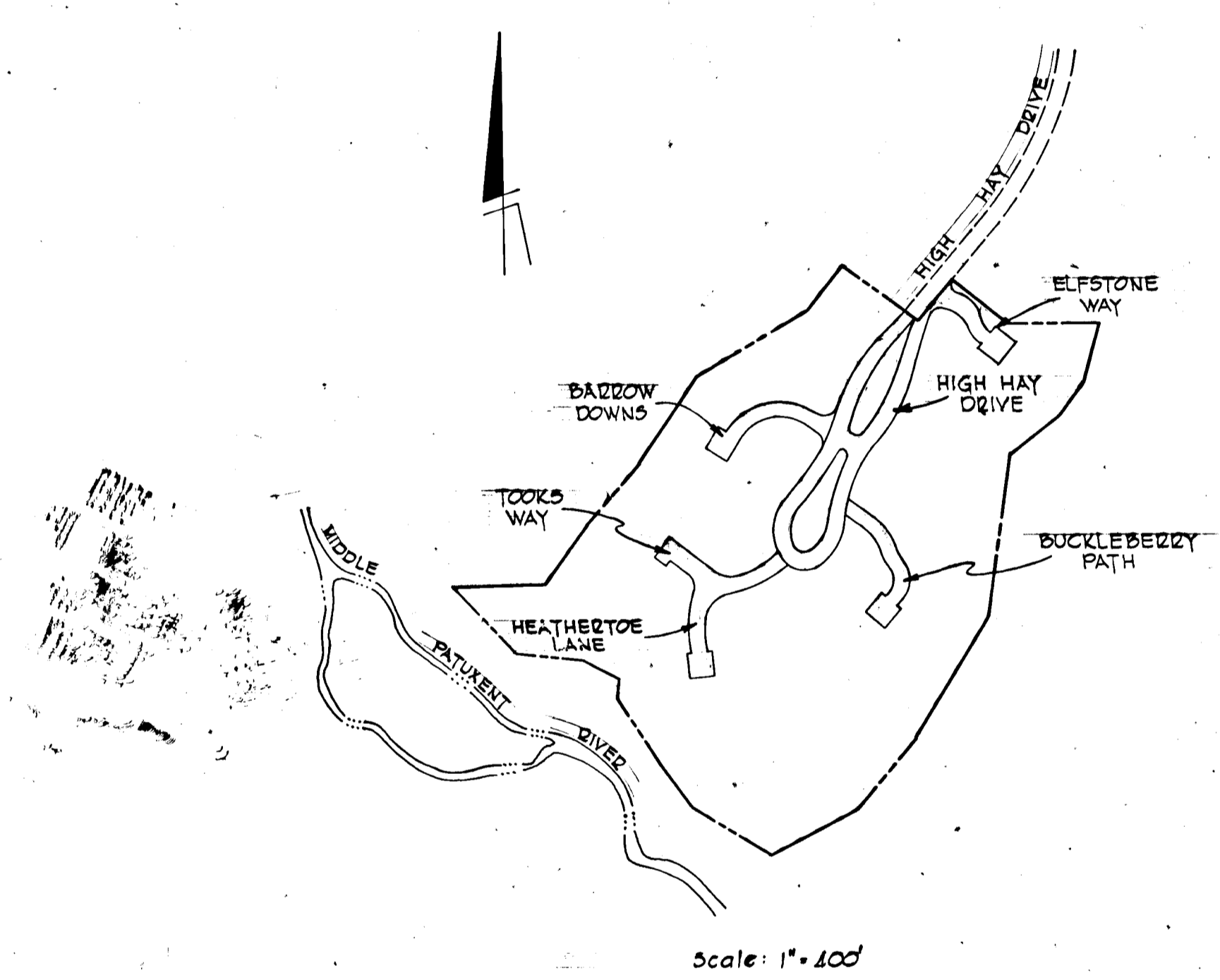
SECTION 2 - AREA 4



LOCATION PLAN
SCALE: 1"=2000'

GENERAL NOTES

- ALL MATERIALS AND METHODS OF CONSTRUCTION SHALL CONFORM TO THE HOWARD COUNTY ROAD CONSTRUCTION CODE AND STANDARD SPECIFICATIONS (REVISED AUGUST 6, 1968).
- FOR ALL DETAILS NOT SHOWN ON THESE PLANS SEE THE HOWARD COUNTY ROAD CONSTRUCTION CODE AND STANDARD SPECIFICATIONS (REVISED AUGUST 6, 1968) AND THE HOWARD COUNTY STORM DRAIN DESIGN MANUAL.
- TREES ARE TO BE PROTECTED AGAINST DAMAGE AS MUCH AS POSSIBLE. TREES WHICH ARE TO REMAIN IN STREETS AND OTHER RIGHTS-OF-WAY WILL BE MARKED BY THE ENGINEER PRIOR TO THE COMMENCING OF CONSTRUCTION OPERATIONS.
- THE DEVELOPER WILL PLACE ROADS TO SUBGRADE FOR THE FULL WIDTH OF THE RIGHT-OF-WAY BEFORE INSTALLATION OF UTILITIES.
- THE DEVELOPER WILL PLACE ALL EASEMENT AREAS WHERE UTILITIES ARE TO BE INSTALLED TO ROUGH GRADE BEFORE NOTICE TO PROCEED WILL BE ISSUED.
- THE CONTRACTOR SHALL NOTIFY THE FOLLOWING UTILITIES AT LEAST THREE DAYS BEFORE COMMENCING WORK ON THESE PLANS.
BELL TELEPHONE SYSTEM 393-3686
LONG DISTANCE CABLE DIVISION 399-9558
BALTIMORE GAS & ELECTRIC CO. 539-8000 EXT. 691
- DESIGN SPEED IS 15 MPH FOR HIGH HAY DRIVE; 10 MPH FOR ALL OTHER ROADWAYS AND DRIVEWAYS.
- TOPOGRAPHIC DATA BASED UPON FIELD RUN SURVEY, DECEMBER, 1973, AND AERIAL PHOTOGRAPHY BY MAPS INCORPORATED, DECEMBER, 1964. ALL ELEVATIONS U.S.C. & G.S. DATUM.
- ALL INLETS AND MANHOLES TO HAVE A MINIMUM 8" CONCRETE FOOTER.
- TEMPORARY COMPACTED EARTH FILLED DIVERSION DIKES ARE TO BE CONSTRUCTED AT THE TOP OF ALL CUT OR FILL SLOPES OVER 4 FEET IN HEIGHT CONCURRENTLY WITH THE INITIAL GRADING AND DIRECTED TO UNDISTURBED GROUND AT THE END OF EACH DAY. (SEE SEDIMENT CONTROL PLAN)
- ALL SMALES SHALL BE SODDED AND TAMPED AND ALL SLOPES SHALL BE SEEDDED OR SODDED IN ACCORDANCE WITH "STANDARDS AND SPECIFICATIONS FOR SOIL EROSION AND SEDIMENT CONTROL IN URBANIZING AREAS".
- THE CONTRACTOR SHALL NOTIFY THE HOWARD SOIL CONSERVATION DISTRICT (465-3180) AT LEAST 24 HOURS PRIOR TO COMMENCING WORK ON THESE PLANS.
- UNDERGROUND FACILITIES, STRUCTURES AND UTILITIES HAVE BEEN PLOTTED FROM AVAILABLE SURVEYS AND RECORDS AND THEREFORE, THEIR LOCATIONS MUST BE CONSIDERED APPROXIMATE ONLY. THE VERIFICATION OF THE LOCATION OF ALL UNDERGROUND FACILITIES, STRUCTURES AND UTILITIES EITHER SHOWN OR NOT SHOWN SHALL BE THE RESPONSIBILITY OF THE CONTRACTOR.



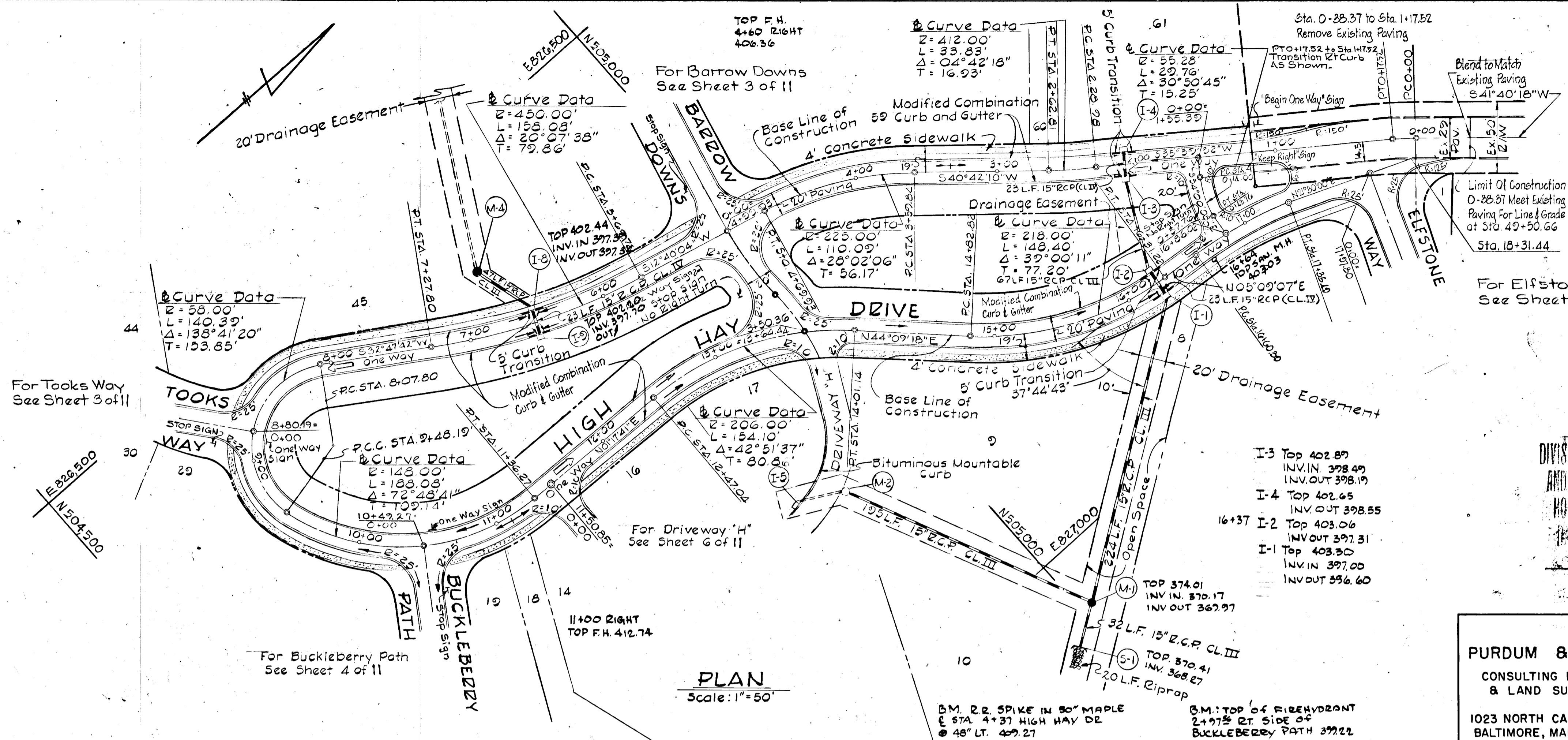
APPROVED
DIVISION OF LAND DEVELOPMENT
AND TRANSPORTATION PLANNING
HOWARD COUNTY, MARYLAND
DATE 7/25/75
J. H. [Signature]

OWNER AND DEVELOPER	
THE HOWARD RESEARCH AND DEVELOPMENT CORP. STERRETT BUILDING COLUMBIA, MARYLAND 21044	
VILLAGE OF HARPER'S CHOICE SECTION 2 AREA 4	
1	3/75 Revised St. Dr. Sheet 3 & 4
Rev. No.	Rev. Date
APPROVED: Howard County Department of Public Works.	
<i>B. N. McKeand</i>	8/20/75
Chief: Bureau of Highways	Date
APPROVED: Howard County Office of Planning and Zoning	
<i>J. H. [Signature]</i>	8/27/75
Chief: Division of Land Development and Transportation Planning	Date

PURDUM & JESCHKE
CONSULTING ENGINEERS
& LAND SURVEYORS
1023 NORTH CALVERT STREET
BALTIMORE, MARYLAND 21202

DATE	
BY	
NO.	
PLAN	
NOTE BOOK	
ALIGNMENT CHECKED	
BY	
DATE	
NO.	

DATE	
BY	
NO.	
PROFILE	
NOTE BOOK	
GRADE CHECKED	
BY	
DATE	
NO.	



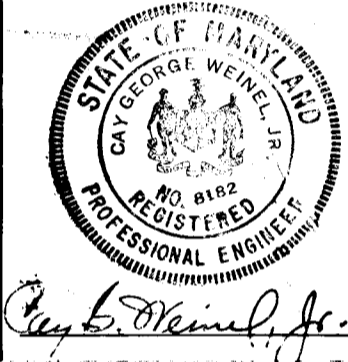
STRUCTURE SCHEDULE						
NO	TYPE	LOCATION	INV. IN	INV. OUT	TOP ELEV.	REMARKS
I-9	A-5	@ Sta. 6+50; 12.42 Lt.	398.02	402.07	402.07	Ho. Co. Dwg. D-64-A, Pg. 119-A
I-8	A-5	@ Sta. 6+50; 10.42 Rt.	397.79	397.59	402.16	Ho. Co. Dwg. D-64-A, Pg. 119-A
M-4	Shallow Manhole	@ Sta. 6+85; 46' Rt.	397.12	396.69	401.97	See Detail Sheet 7 of 11
I-4	A-5	@ Sta. 2+06; 10.42 Rt.	398.69	398.26	402.69	Ho. Co. Dwg. D-64-A, Pg. 119-A
I-3	A-5	@ Sta. 2+06; 12.42 Lt.	398.46	398.26	402.69	Ho. Co. Dwg. D-64-A, Pg. 119-A
I-2	A-5	@ Sta. 16+25; 12.42 Lt.	397.59	397.39	403.13	Ho. Co. Dwg. D-64-A, Pg. 119-A
I-1	A-5	@ Sta. 16+25; 10.42 Rt.	397.16	396.92	403.13	Ho. Co. Dwg. D-64-A, Pg. 119-A
M-1	Shallow Manhole	See Plan & Profile	370.49	369.67	374.50	See Detail Sheet 7 of 11
S-1	C	See Plan & Profile	368.41	368.31	370.31	Ho. Co. Standard Dwg. D-52 P. 107

APPROVED: Howard County Department of Public Works
D. H. Ireland 8/20/95
 Chief: Bureau of Highways Date

APPROVED: Howard County Office of Planning and Zoning
J. H. Clawsen 8/15/95
 Chief: Division of Land Development and Transportation Planning Date

APPROVED
 DIVISION OF LAND DEVELOPMENT AND TRANSPORTATION PLANNING
 HOWARD COUNTY, MARYLAND
 7/25/95
J. H. Clawsen

PURDUM & JESCHKE
 CONSULTING ENGINEERS & LAND SURVEYORS
 1023 NORTH CALVERT STREET
 BALTIMORE, MARYLAND 21202



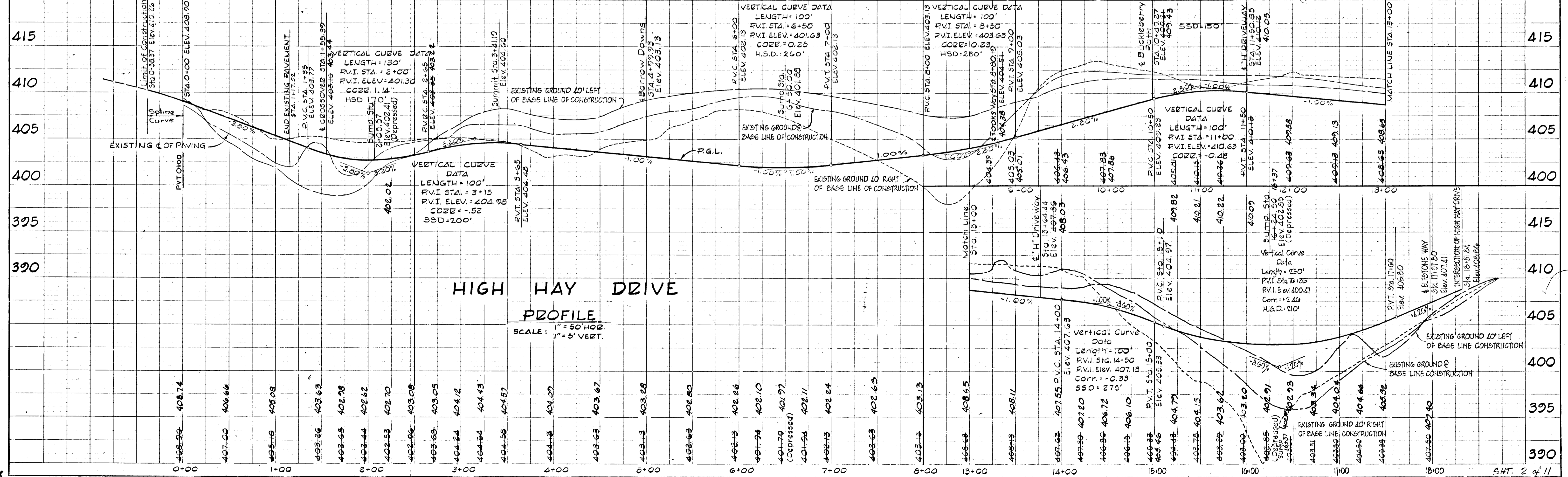
COLUMBIA MARYLAND

OWNER AND DEVELOPER
 HOWARD RESEARCH AND DEVELOPMENT CORP.
 STERRETT BUILDING COLUMBIA, MARYLAND 21044

PROJECT AREA
 VILLAGE OF HARPER'S CHOICE
 SECTION 2 AREA 4
 5TH ELECTION DISTRICT HOWARD COUNTY, MARYLAND

PROJECT TITLE
 PLAN AND PROFILE
 HIGH HAY DRIVE

Des. By J.A.M. Scale As Shown Dwg. No. 2 of 11
 Drawn By A.Z.Z. Date 5-30-74 C.C.F. No.
 Chk. By K.J.C. Approved



NOT TO SCALE
 50' LF
 15'
 1-5
 TOP 337.78
 INV. IN 336.01
 INV. OUT 336.67

See Sheet 2 of 11
 For Plan and Profile
 of High Hay Drive

See Sheet 5 of 11
 For Details and Linear
 Profiles of Cul-De Sacs

See Sheet 9 of 11 for
 Drainage Profiles

APPROVED: Howard County Department of Public Works
 Chief: Bureau of Highways
 Mr. Ireland
 8/20/75
 Date

STRUCTURE SCHEDULE						
NO.	TYPE	LOCATION	INV. IN	INV. OUT	TOP ELEV.	REMARKS
S-4	C	See Plan	345.75		347.75	Ho. Co. Dwg. 52 Pg. 107
M-6	Shallow Manhole	See Plan	346.71	346.41	352.40	See Detail Sheet 7 of 11
I-11	A-5	1.33' Back Linear Profile Sta. 0+98	352.89	359.45	366.25	Ho. Co. Dwg. 64-A Pg. 119-A
S-5	C	See Plan	353.40		355.40	Ho. Co. Dwg. 52 Pg. 107
I-12	A-5	1.33' Back Linear Profile Sta. 1+56		358.33	363.25	Ho. Co. Dwg. 64-A Pg. 119-A
M-3	Shallow Manhole	Sta. 4+16.02 Left	362.91	362.70	368.50	See Detail Sheet 7 of 11
I-6	A-5	1.33' Back Linear Profile Sta. 1+33	359.48	359.26	363.50	Ho. Co. Dwg. 64-A Pg. 119-A
M-7	Shallow Manhole	See Plan	350.78	350.58	355.25	See Detail Sheet 7 of 11
S-2	C	See Plan	350.08		352.33	Ho. Co. Dwg. 52 Pg. 107
I-14	A-5 w/ Deflectors	Sta. 2+61.48; 12.42' Left			367.30	Ho. Co. Dwg. 64-A Pg. 119-A See Detail Sheet 7 of 9

APPROVED: Howard County Office of Planning and Zoning
 Chief: Division of Land Development and Transportation Planning
 [Signature]
 Date

Rev. Date	Rev. No.	Revision Description
8/78	1	Revised Str. Dr. as per D.P.W. Comments

COLUMBIA MARYLAND

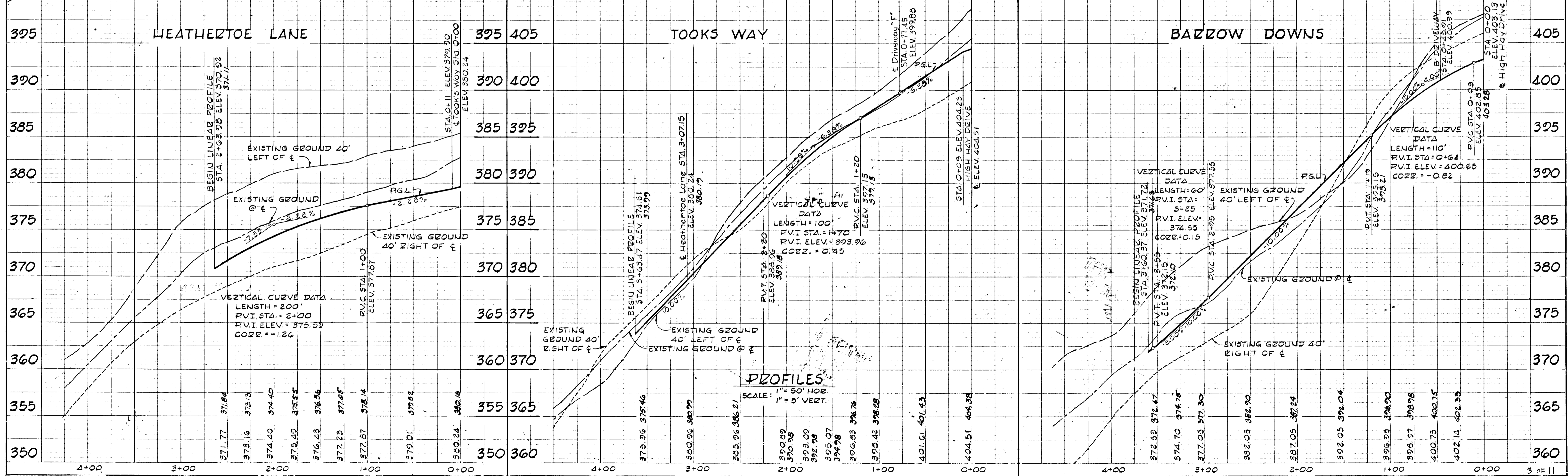
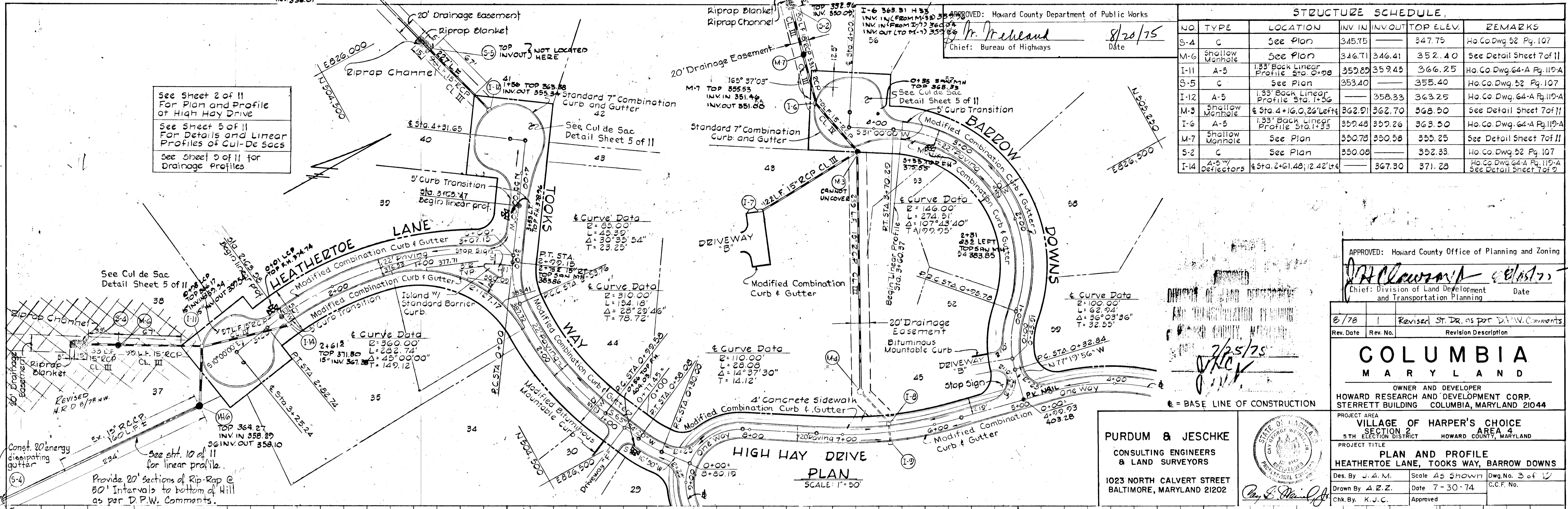
OWNER AND DEVELOPER
 HOWARD RESEARCH AND DEVELOPMENT CORP.
 STRETT BUILDING COLUMBIA, MARYLAND 21044

PROJECT AREA
 VILLAGE OF HARPER'S CHOICE
 SECTION 2
 5TH ELECTION DISTRICT HOWARD COUNTY, MARYLAND

PROJECT TITLE
**PLAN AND PROFILE
 HEATHERTOE LANE, TOOKS WAY, BARROW DOWNS**

Des. By J. A. M. Scale As Shown Dwg. No. 3 of 11
 Drawn By A. Z. Z. Date 7-30-74 C.C.F. No.
 Chk. By K. J. C. Approved

PURDUM & JESCHKE
 CONSULTING ENGINEERS
 & LAND SURVEYORS
 1023 NORTH CALVERT STREET
 BALTIMORE, MARYLAND 21202



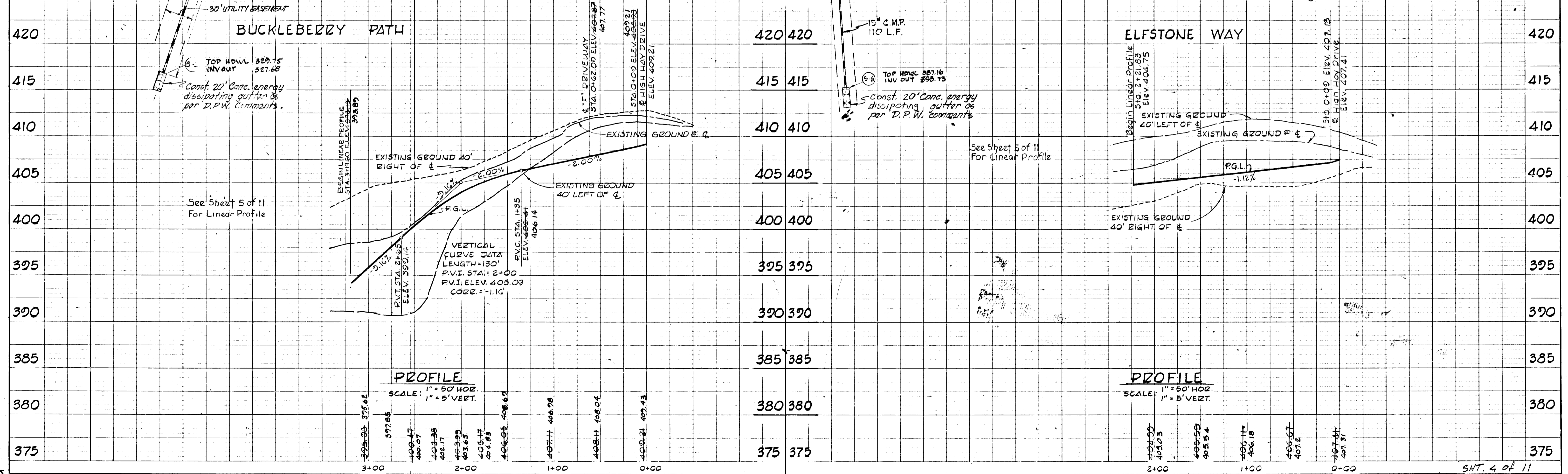
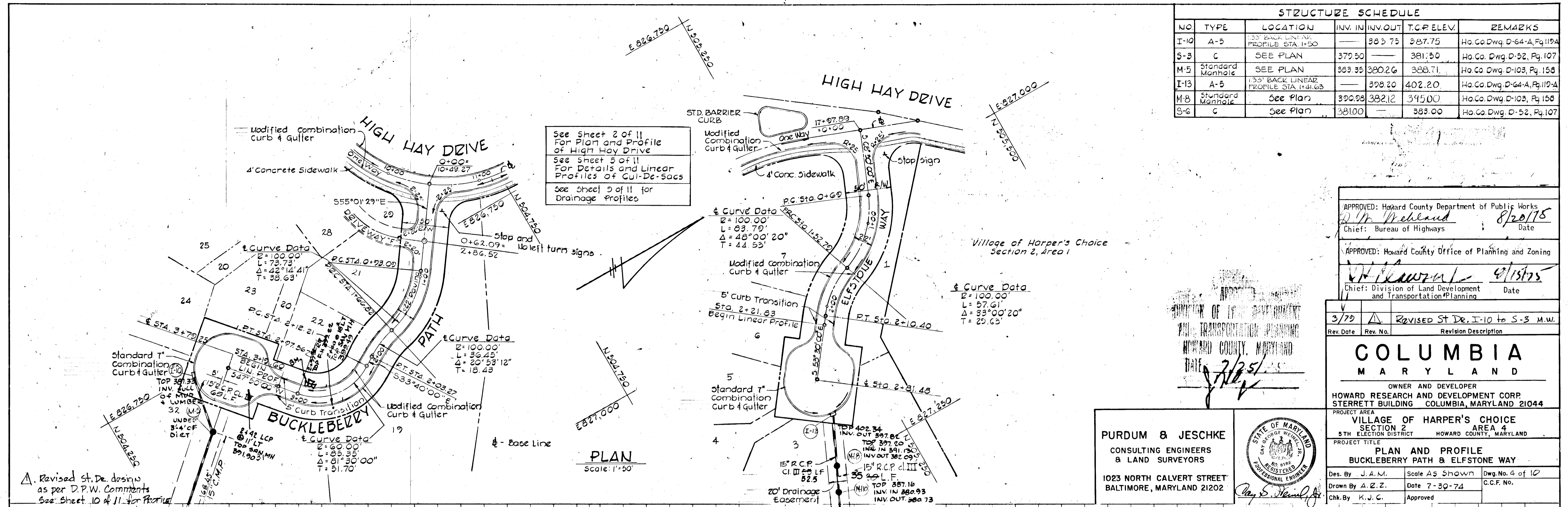
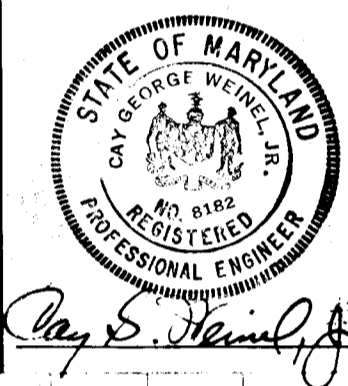
STRUCTURE SCHEDULE						
NO	TYPE	LOCATION	INV. IN	INV. OUT	T.C.P. ELEV.	REMARKS
I-10	A-5	133' BACK LINEAR PROFILE STA. 1+50	—	383.75	387.75	Ho. Co. Dwg. D-64-A, Pg. 119A
S-3	C	SEE PLAN	379.50	—	381.50	Ho. Co. Dwg. D-52, Pg. 107
M-5	Standard Manhole	SEE PLAN	383.35	380.26	388.71	Ho. Co. Dwg. D-103, Pg. 158
I-13	A-5	133' BACK LINEAR PROFILE STA. 1+41.63	—	398.20	402.20	Ho. Co. Dwg. D-64-A, Pg. 119A
M-8	Standard Manhole	SEE PLAN	390.98	382.12	395.00	Ho. Co. Dwg. D-103, Pg. 158
S-6	C	SEE PLAN	381.00	—	383.00	Ho. Co. Dwg. D-52, Pg. 107

APPROVED: Howard County Department of Public Works
D. M. McEland 8/20/75
 Chief: Bureau of Highways Date

APPROVED: Howard County Office of Planning and Zoning
[Signature] 9/15/75
 Chief: Division of Land Development and Transportation Planning Date

3/79	REVISED ST. DE. I-10 to S-3 M.W.
Rev. Date	Rev. No. Revision Description
COLUMBIA MARYLAND	
OWNER AND DEVELOPER HOWARD RESEARCH AND DEVELOPMENT CORP. STERRETT BUILDING COLUMBIA, MARYLAND 21044	
PROJECT AREA VILLAGE OF HARPER'S CHOICE SECTION 2 AREA 4 5TH ELECTION DISTRICT HOWARD COUNTY, MARYLAND	
PROJECT TITLE PLAN AND PROFILE BUCKLEBERRY PATH & ELFSTONE WAY	
Des. By J.A.M.	Scale As Shown Dwg. No. 4 of 10
Drawn By A.Z.Z.	Date 7-30-74 C.C.F. No.
Chk. By K.J.C.	Approved

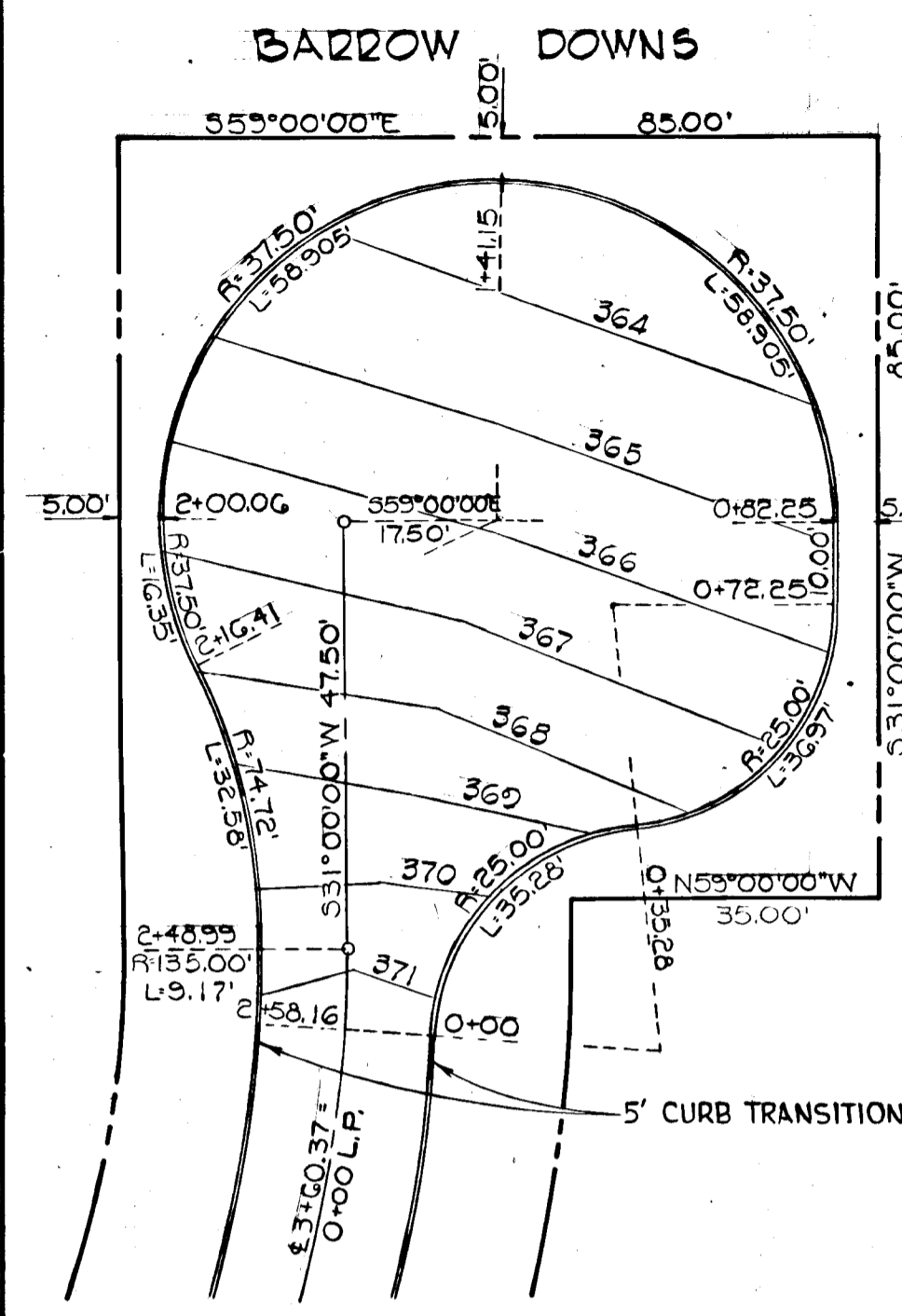
PURDUM & JESCHKE
 CONSULTING ENGINEERS
 & LAND SURVEYORS
 1023 NORTH CALVERT STREET
 BALTIMORE, MARYLAND 21202



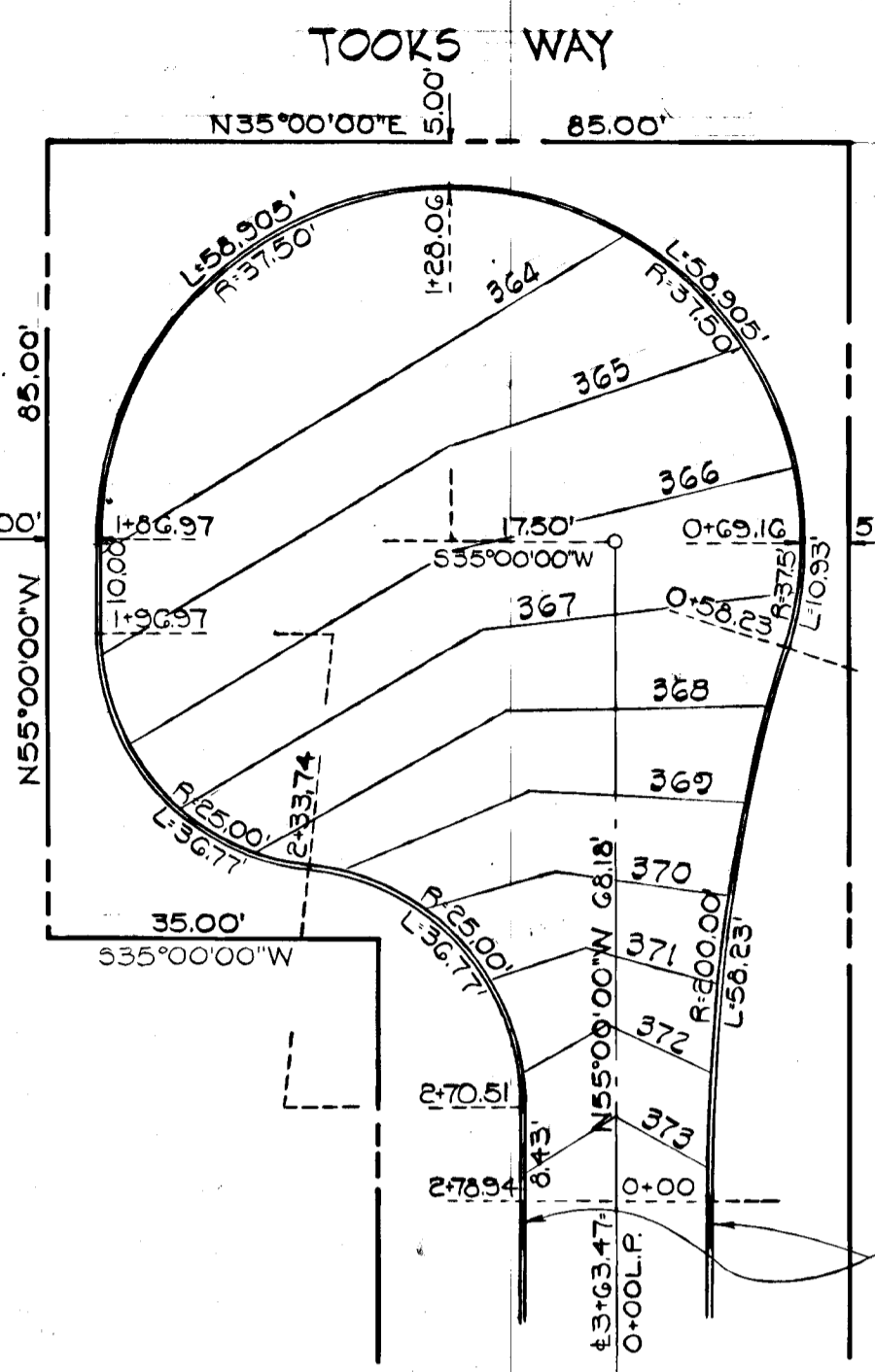
DATE	
BY	
REVISION	
NO.	
PLAN	
NOTE BOOK	
STAMP CHECKED	
BY	
DATE	

DATE	
BY	
REVISION	
NO.	
PROFILE	
NOTE BOOK	
STAMP CHECKED	
BY	
DATE	

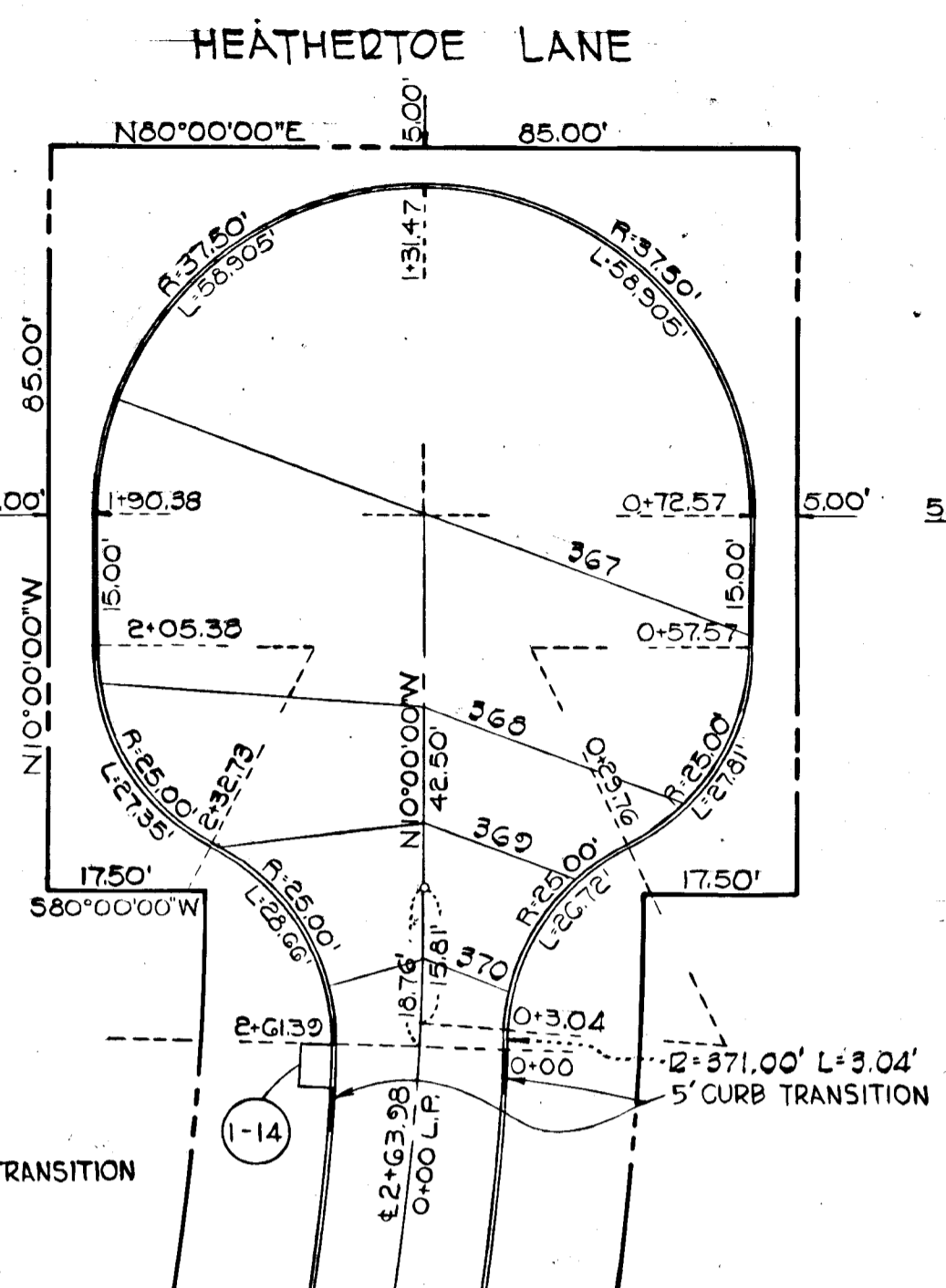
DATE	
BY	
REVISIONS	
NO. DATE	
1. DATE	
2. DATE	
3. DATE	
4. DATE	
5. DATE	
6. DATE	
7. DATE	
8. DATE	
9. DATE	
10. DATE	



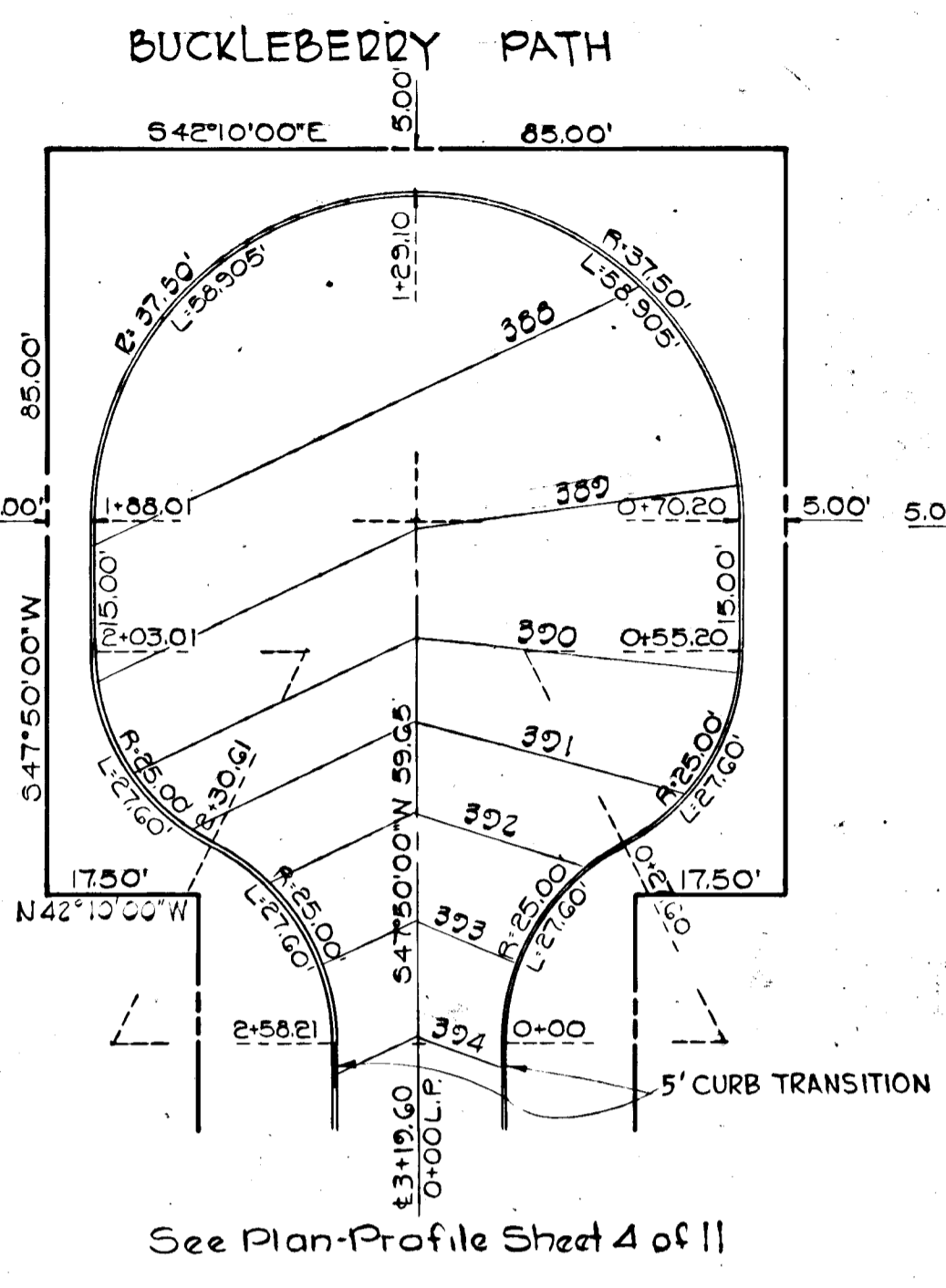
See Plan-Profile Sheet 3 of 11



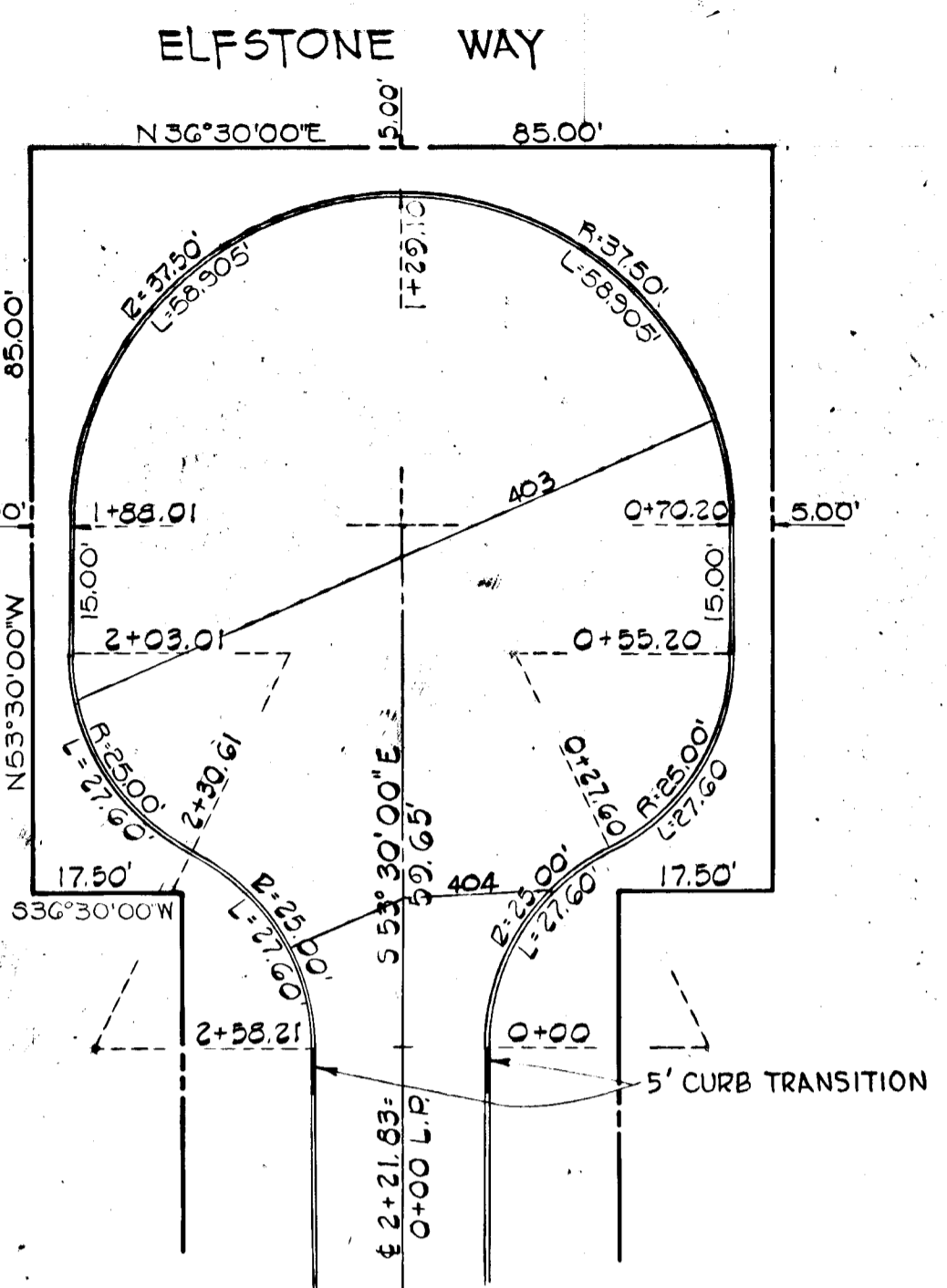
See Plan-Profile Sheet 3 of 11



See Plan-Profile Sheet 3 of 11



See Plan-Profile Sheet 4 of 11



See Plan-Profile Sheet 4 of 11

NOTES: 1. All cul-de-sacs shall have Standard 7" Combination Curb and Gutters throughout linear profiles, provide 5' transition to and from Modified Combination Curb and Gutters as shown in plan, this sheet.
2. See plan profiles for locations of drainage facilities.

DETAILS
SCALE 1"=20'

PURDUM & JESCHKE
CONSULTING ENGINEERS
& LAND SURVEYORS
1023 NORTH CALVERT STREET
BALTIMORE, MARYLAND 21202



APPROVED
HOWARD COUNTY DEPARTMENT OF PUBLIC WORKS
7/25/75
J. K. [Signature]

APPROVED: Howard County Department of Public Works
Chief: Bureau of Highways
8/20/75
Date

APPROVED: Howard County Office of Planning and Zoning
Chief: Division of Land Development and Transportation Planning
8/15/75
Date

3/70	1	Revised as per D.P.W. Comments 7/78
Rev. Date	Rev. No.	Revision Description

COLUMBIA
MARYLAND

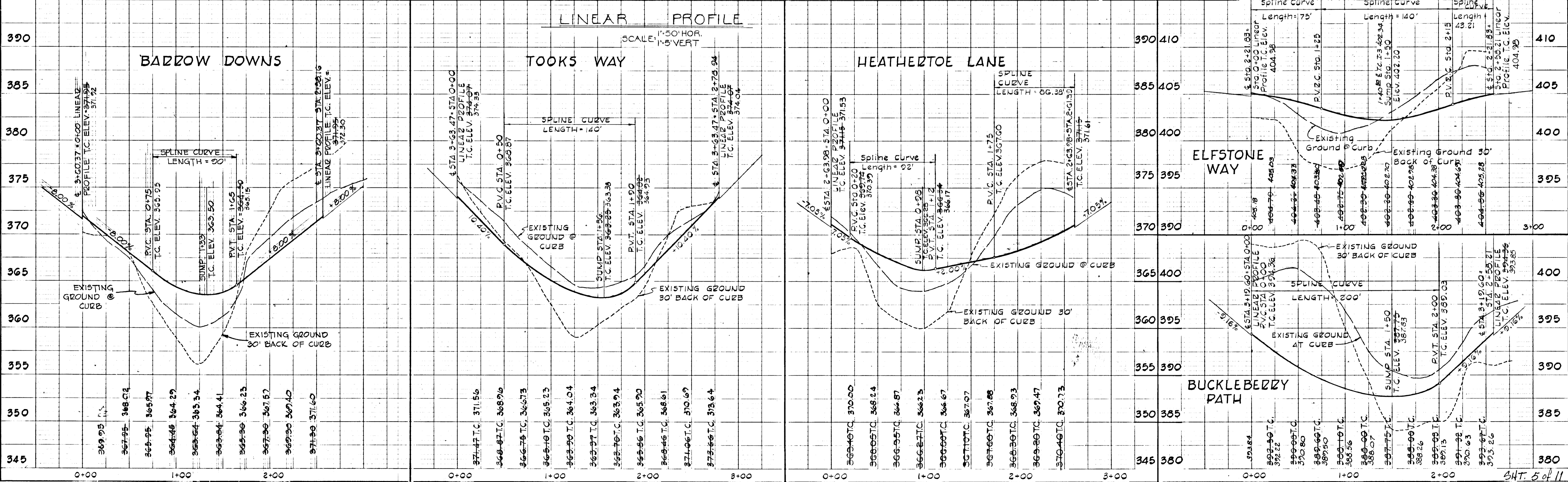
OWNER AND DEVELOPER
HOWARD RESEARCH AND DEVELOPMENT CORP.
STERRETT BUILDING COLUMBIA, MARYLAND 21044

PROJECT AREA
VILLAGE OF HARPER'S CHOICE
SECTION 2 AREA 4
5TH ELECTION DISTRICT HOWARD COUNTY, MARYLAND

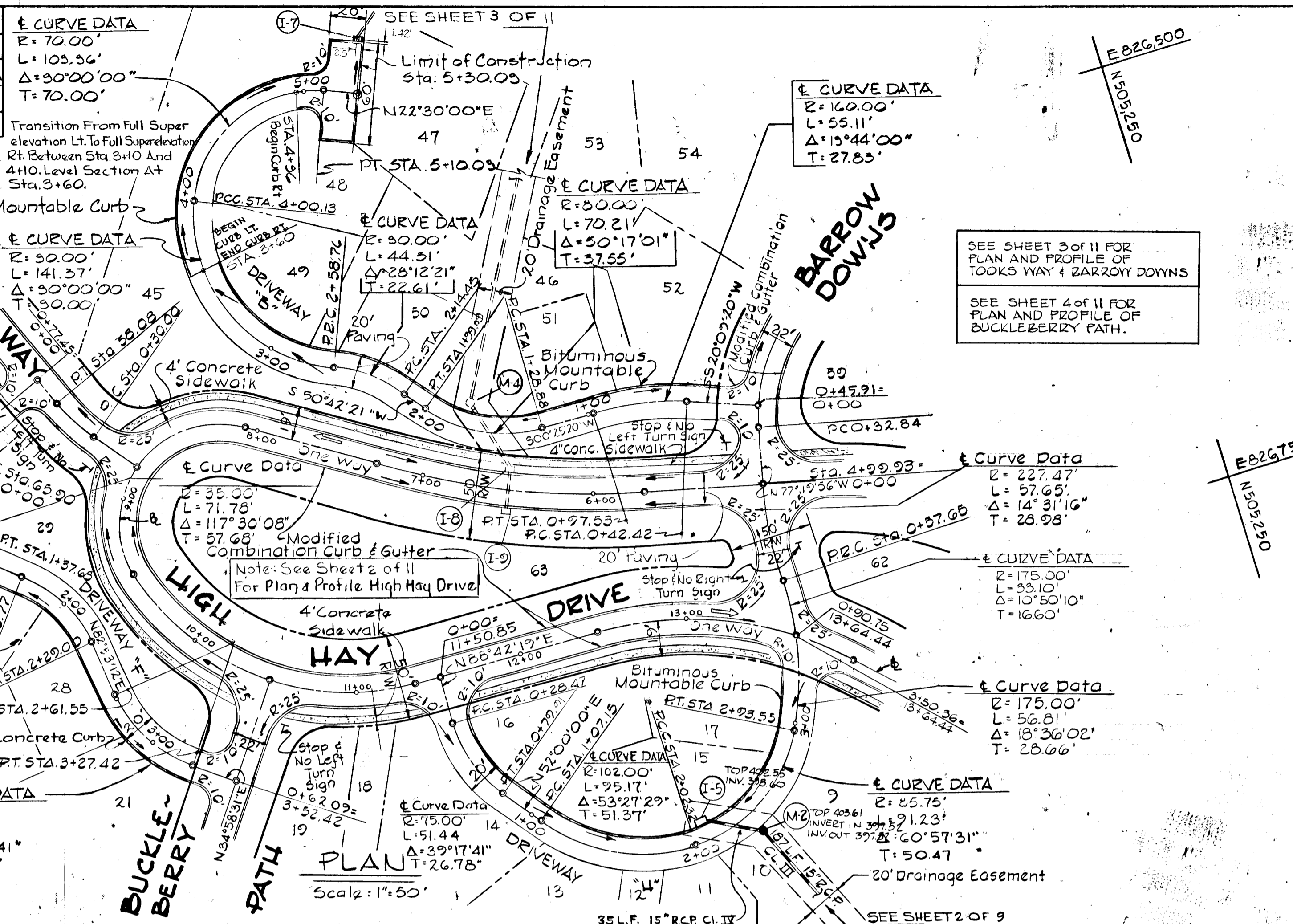
PROJECT TITLE
CUL DE SAC LINEAR PROFILES
AND DETAILS

Des. By K.J.C. Scale As Shown Dwg. No. 5 of 11
Drawn By A.Z.Z./C.J.C. Date 7-30-74 C.C.F. No.
Chk. By K.J.C. Approved

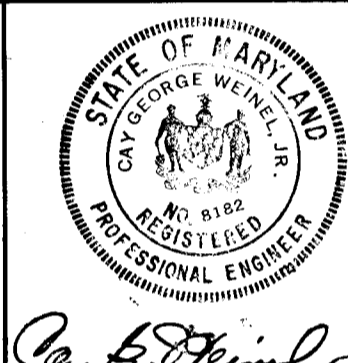
DATE	
BY	
REVISIONS	
NO. DATE	
1. DATE	
2. DATE	
3. DATE	
4. DATE	
5. DATE	
6. DATE	
7. DATE	
8. DATE	
9. DATE	
10. DATE	



STRUCTURE SCHEDULE						
NO.	TYPE	LOCATION	INV. IN	INV. OUT	TOP ELEV.	REMARKS
I-5	A-5	@ Sta. 2+12.25; 11.60L+E	398.59	402.59		Ho. Co. Dwg. D-64-A Pg. 119-A
M-2	Shallow Manhole	@ Sta. 2+35; 12' Rt.	398.14	397.95	402.14	See Detail Sheet 7 of 11
I-7	A-5	@ Sta. 5+18; 94' Left	378.00	383.28		Ho. Co. Dwg. D-64-A Pg. 119-A



PURDUM & JESCHKE
 CONSULTING ENGINEERS
 & LAND SURVEYORS
 1023 NORTH CALVERT STREET
 BALTIMORE, MARYLAND 21202



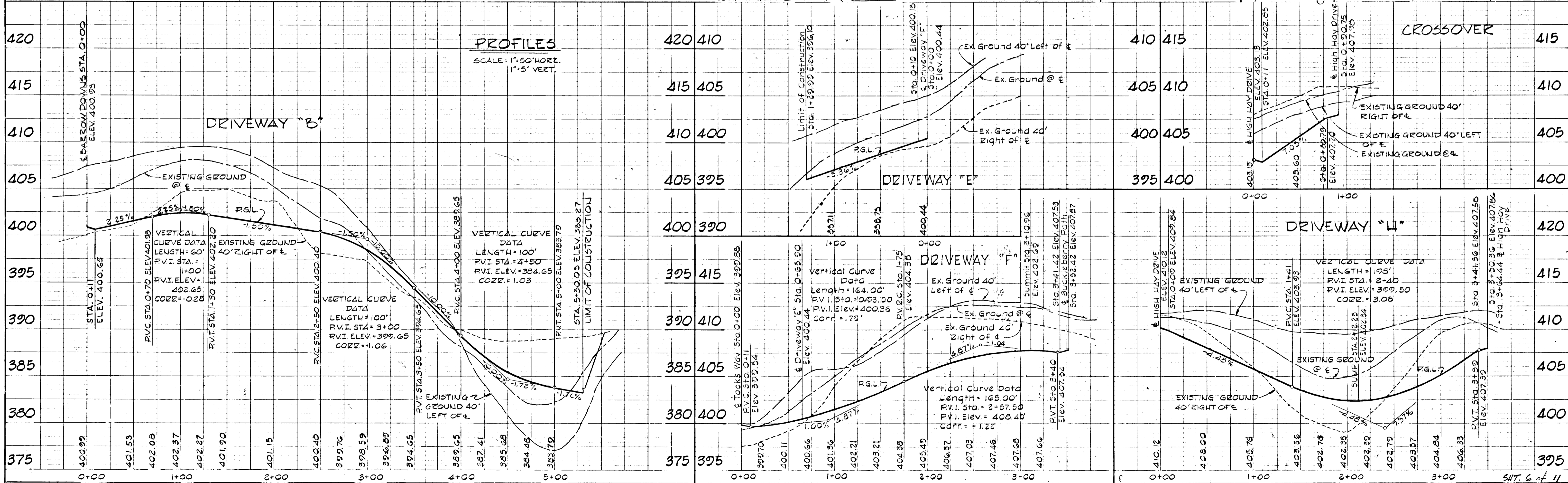
APPROVED: *[Signature]*
 DIVISION OF LAND DEVELOPMENT
 AND TRANSPORTATION PLANNING
 HOWARD COUNTY, MARYLAND
 DATE: 7/25/75

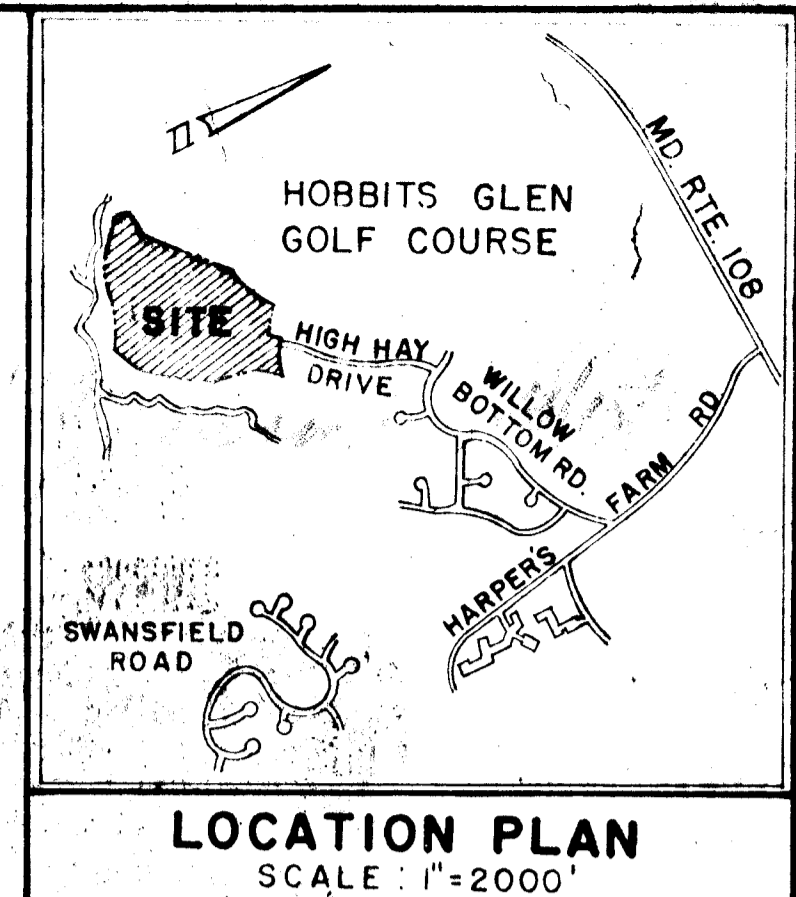
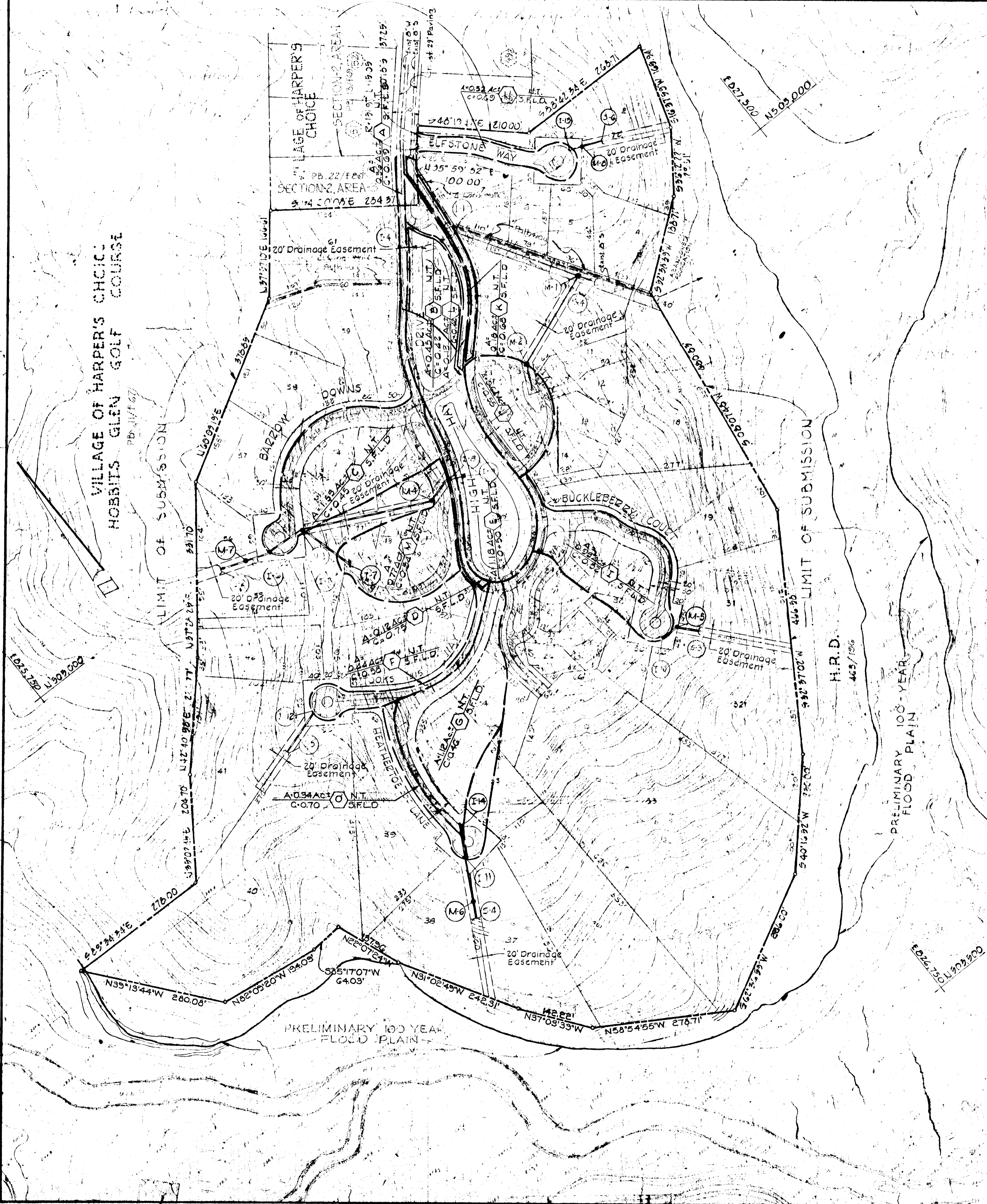
APPROVED: *[Signature]*
 Chief: Bureau of Highways
 Date: 8/20/75

APPROVED: *[Signature]*
 Chief: Division of Land Development
 and Transportation Planning
 Date: 8/20/75

Rev. Date	Rev. No.	Revision Description

COLUMBIA MARYLAND
 OWNER AND DEVELOPER
 HOWARD RESEARCH AND DEVELOPMENT CORP.
 STERRETT BUILDING COLUMBIA, MARYLAND 21044
 PROJECT AREA
 VILLAGE OF HARPER'S CHOICE
 SECTION 2 AREA 4
 5TH ELECTION DISTRICT HOWARD COUNTY, MARYLAND
 PROJECT TITLE
PLAN AND PROFILE
DRIVEWAYS B, E, F, G & CROSSOVER
 Des. By J. A. M. Scale As Shown Dwg. No. 6 of 11
 Drawn By A. E. Z./E. A. Z. Date 7-20-74 C.C.F. No.
 Chk. By K. J. C. Approved





- LEGEND**
- Residential Roadways
 - Common Driveways
 - 20' Drainage Easement

APPROVED: Howard County Department of Public Works

[Signature] 8/20/75
 Chief: Bureau of Highways Date

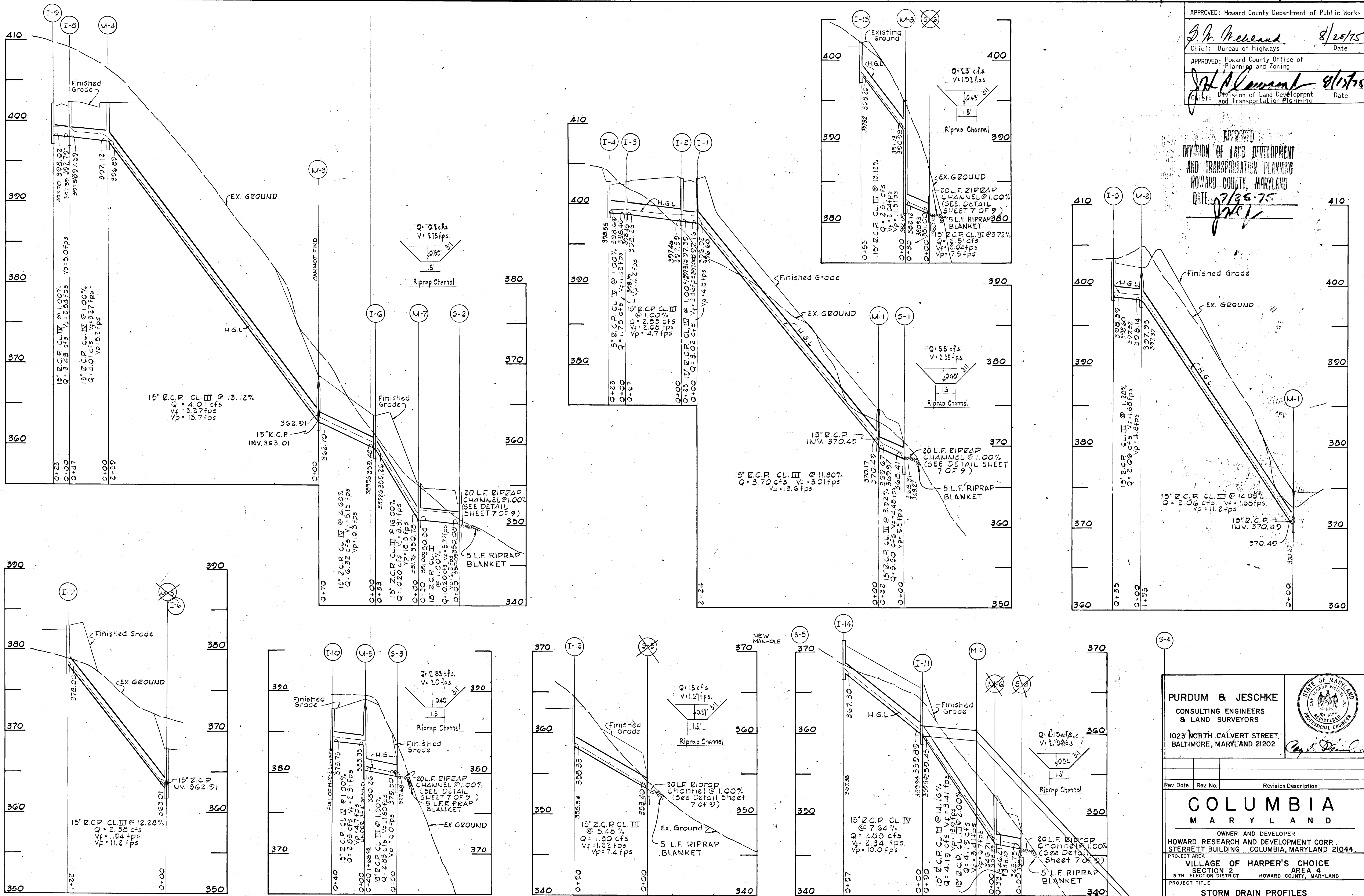
APPROVED: Howard County Office of Planning and Zoning

[Signature] 8/21/75
 Chief: Division of Land Development and Transportation Planning Date

PURDUM & JESCHKE
 CONSULTING ENGINEERS
 & LAND SURVEYORS
 1023 N. CALVERT ST.
 BALTIMORE MARYLAND, 21202

3/79	1	As per D.P.W. Comments
Rev Date	Rev No	Revision Description
COLUMBIA MARYLAND		
OWNER AND DEVELOPER HOWARD RESEARCH AND DEVELOPMENT CORP.		
PROJECT AREA VILLAGE OF HARPER'S CHOICE Section 2 Area 4		
Etc District no 5 Howard County, Maryland		
PROJECT TITLE DRAINAGE AREA MAP		
Des By J.A.M.	Scale	Dwg. No 8
Dir By A.B.Z.	Date 7-30-74	C.C.F. No.
Chk By	Approved	

F-74-103E

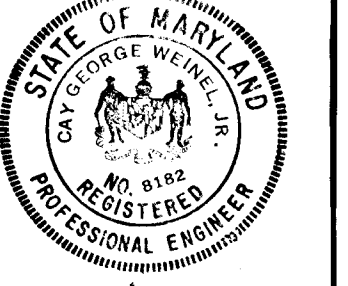


APPROVED: Howard County Department of Public Works
J. H. McLeod 8/28/75
 Chief: Bureau of Highways Date

APPROVED: Howard County Office of Planning and Zoning
J. H. McLeod 8/15/75
 Chief: Division of Land Development and Transportation Planning Date

APPROVED
 DIVISION OF LAND DEVELOPMENT AND TRANSPORTATION PLANNING
 HOWARD COUNTY, MARYLAND
 DATE: 7/25-75
J.H.M.

PURDUM & JESCHKE
 CONSULTING ENGINEERS & LAND SURVEYORS
 1023 NORTH CALVERT STREET / BALTIMORE, MARYLAND 21202
Ray J. Jeschke



Rev. Date Rev. No. Revision Description

COLUMBIA MARYLAND

OWNER AND DEVELOPER
 HOWARD RESEARCH AND DEVELOPMENT CORP.
 STERRETT BUILDING COLUMBIA, MARYLAND 21044.

PROJECT AREA
 VILLAGE OF HARPER'S CHOICE
 SECTION 2
 5TH ELECTION DISTRICT HOWARD COUNTY, MARYLAND

PROJECT TITLE
STORM DRAIN PROFILES

Des. By J.A.M. Scale: 1"=50' HORIZ. 1"=5' VERT. Dwg. No. 9 of 11
 Drawn By A.E.Z. Date 7-30-74 C.C.F. No.
 Chk. By K.J.C. Approved