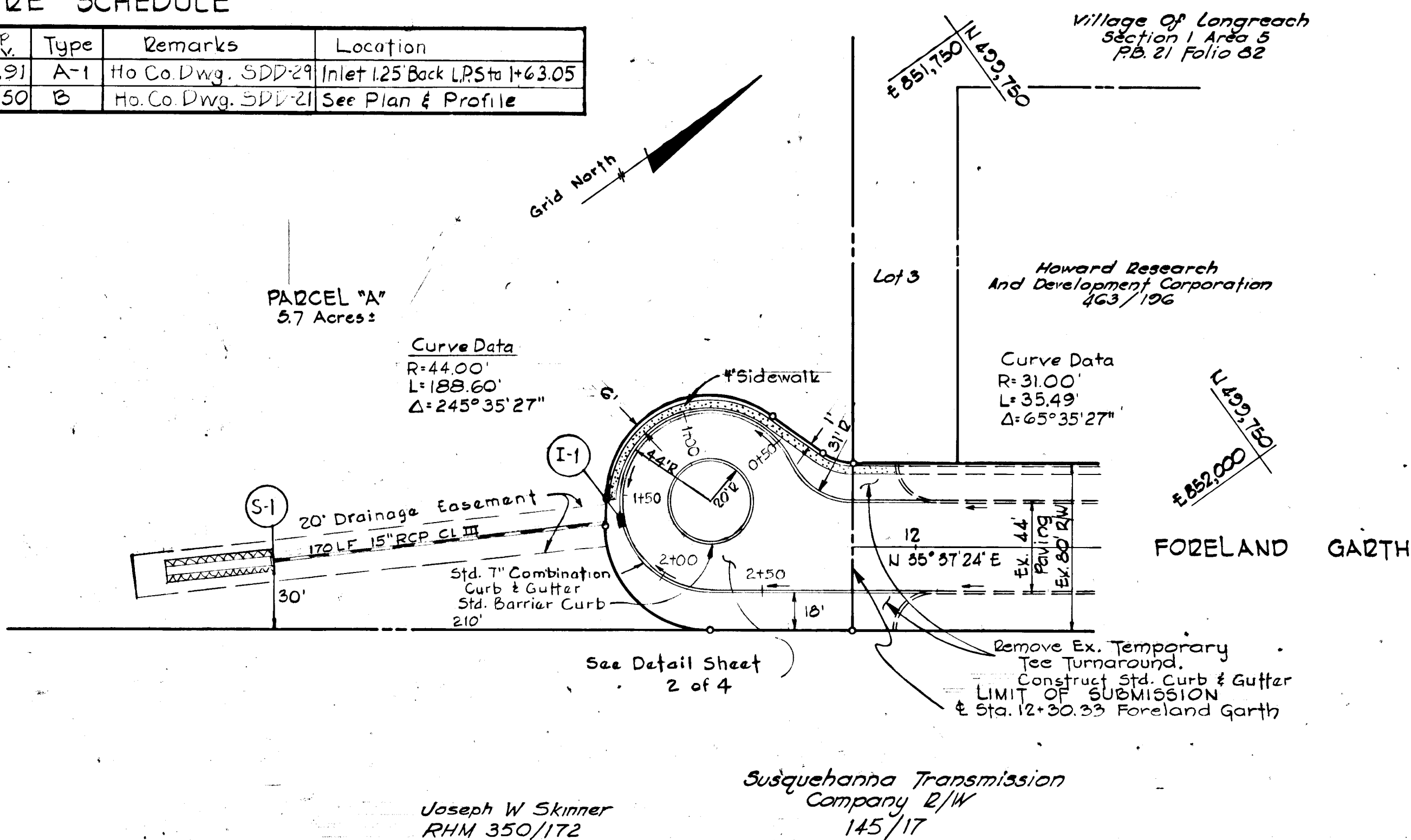


STRUCTURE SCHEDULE

No	Inch. In	Inch. Out	Top Elev.	Type	Remarks	Location
I-1	-	30.50	403.91	A-1	Ho. Co. Dwg. SDD-29	Inlet 125' Back LP Sta 1+63.05
S-1	37.75	-	370.50	B	Ho. Co. Dwg. SDD-21	See Plan & Profile



PARCEL "A"
5.7 Acres

Howard Research
And Development Corporation
4/23/196

FORELAND GARTH

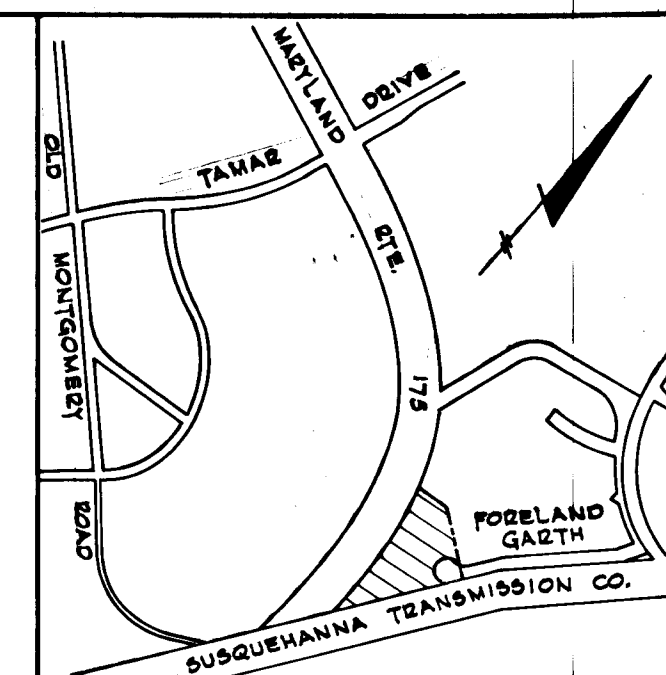
Joseph W Skinner
RHM 350/172

Susquehanna Transmission
Company 12/W
145/17

Scale:
1"=50'

GENERAL NOTES

- ALL MATERIALS AND METHODS OF CONSTRUCTION SHALL CONFORM TO HOWARD COUNTY ROAD CONSTRUCTION CODE STANDARD SPECIFICATIONS (REVISED AUGUST 6, 1968), AND HOWARD COUNTY STORM DRAIN MANUAL.
- TREES ARE TO BE PROTECTED AGAINST DAMAGE AS MUCH AS POSSIBLE. TREES WHICH ARE TO REMAIN IN STREETS AND OTHER RIGHTS OF WAY WILL BE MARKED BY THE ENGINEER PRIOR TO COMMENCING OF CONSTRUCTION OPERATIONS.
- DEVELOPER WILL PLACE ROADS TO SUBGRADE FOR THE FULL WIDTH OF THE RIGHT OF WAY BEFORE INSTALLATIONS OF UTILITIES.
- ALL GRADING WITHIN EASEMENT AREAS WHERE UTILITIES ARE TO BE INSTALLED SHALL BE FINISHED BY DEVELOPER BEFORE NOTICE TO PROCEED WILL BE ISSUED.
- CONTRACTOR TO NOTIFY THE FOLLOWING UTILITIES AT LEAST THREE DAYS BEFORE STARTING WORK SHOWN ON THIS/ THESE DRAWINGS.
BELL TELEPHONE SYSTEM 393-8648
LONG DISTANCE CABLE DIVISION 393-3553
BALTIMORE GAS & ELECTRIC CO. 539-800 EXT. 691
- DESIGN SPEED IS 35 MPH.
- ALL CONTOURS SHOWN ARE BASED ON AERIAL PHOTOGRAPHY BY MAPS INCORPORATED, (DEC. 1964) U.S.C. & G.S. DATUM
- THE INLET SHALL HAVE A MINIMUM OF 8" CONCRETE FOOTER.
- TEMPORARY COMPACTED EARTH FILLED DIVERSION DIKES ARE TO BE CONSTRUCTED AT THE TOP OF ALL CUT OR FILL SLOPES OVER 4 FEET IN HEIGHT CONCURRENTLY WITH THE INITIAL GRADING AND DIRECTED TO UNDISTURBED SOD AT THE END OF EACH DAY (SEE SHEET NO. 4).
- ALL SNALES SHALL BE SODDED AND TAMPED AND ALL SLOPES SHALL BE SEEDED OR SODDED IN COMPLIANCE WITH THE HOWARD COUNTY SOIL CONSERVATION DISTRICT AND THE HOWARD COUNTY PLANNING BOARD STANDARDS ENTITLED "STANDARDS AND SPECIFICATIONS FOR SOIL EROSION AND SEDIMENT CONTROL IN URBANIZED AREAS".
- CONTRACTOR TO NOTIFY THE HOWARD COUNTY SOIL CONSERVATION DISTRICT 465-3180 AT LEAST THREE DAYS BEFORE STARTING WORK SHOWN ON THESE DRAWINGS.
- ALL DISTURBED SLOPE AREAS TO BE STABILIZED AS SOON AS GRADING IS COMPLETED.
- TACK COAT SHALL BE PROVIDED IN ACCORDANCE WITH SECTION C-31-4.
- UNDERGROUND FACILITIES, STRUCTURES AND UTILITIES HAVE BEEN PLOTTED FROM AVAILABLE SURVEYS AND RECORDS AND THEREFORE THEIR LOCATIONS MUST BE CONSIDERED APPROXIMATE ONLY. THE VERIFICATION OF THE LOCATION OF ALL UNDERGROUND FACILITIES, STRUCTURES, AND UTILITIES EITHER SHOWN ON THESE PLANS SHALL BE THE RESPONSIBILITY OF THE CONTRACTOR.



VICINITY MAP
Scale: 1"=600'

Rev. Date	Rev. No.	Revision Description
COLUMBIA MARYLAND		
OWNER AND DEVELOPER HOWARD RESEARCH AND DEVELOPMENT CORPORATION STERRETT BUILDING COLUMBIA, MARYLAND 21044		
PROJECT AREA VILLAGE OF LONGREACH SECTION I AREA 7 6th ELEC. DISTRICT HOWARD COUNTY, MARYLAND		
PROJECT TITLE PLAN & PROFILE		
Des. By: J.M.I.	Scale: As Shown	Dwg. No. 1 of 4
Drawn By: D.R.B.	Date: May 28, 1974	C.C.F. No.
Chk. By: K.J.C.	Approved	

APPROVED: Howard County Department of Public Works.

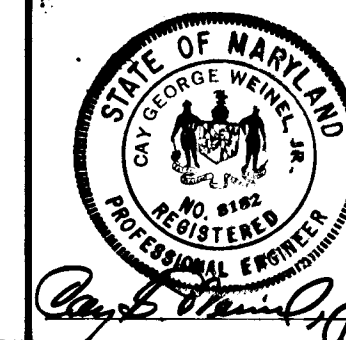
D. W. McKeand 5/31/74
Chief, Bureau of Highways Date

APPROVED: Howard County Office of Planning and Zoning

J. W. Clauson 5/31/74
Chief, Division of Land Development and Transportation Planning Date

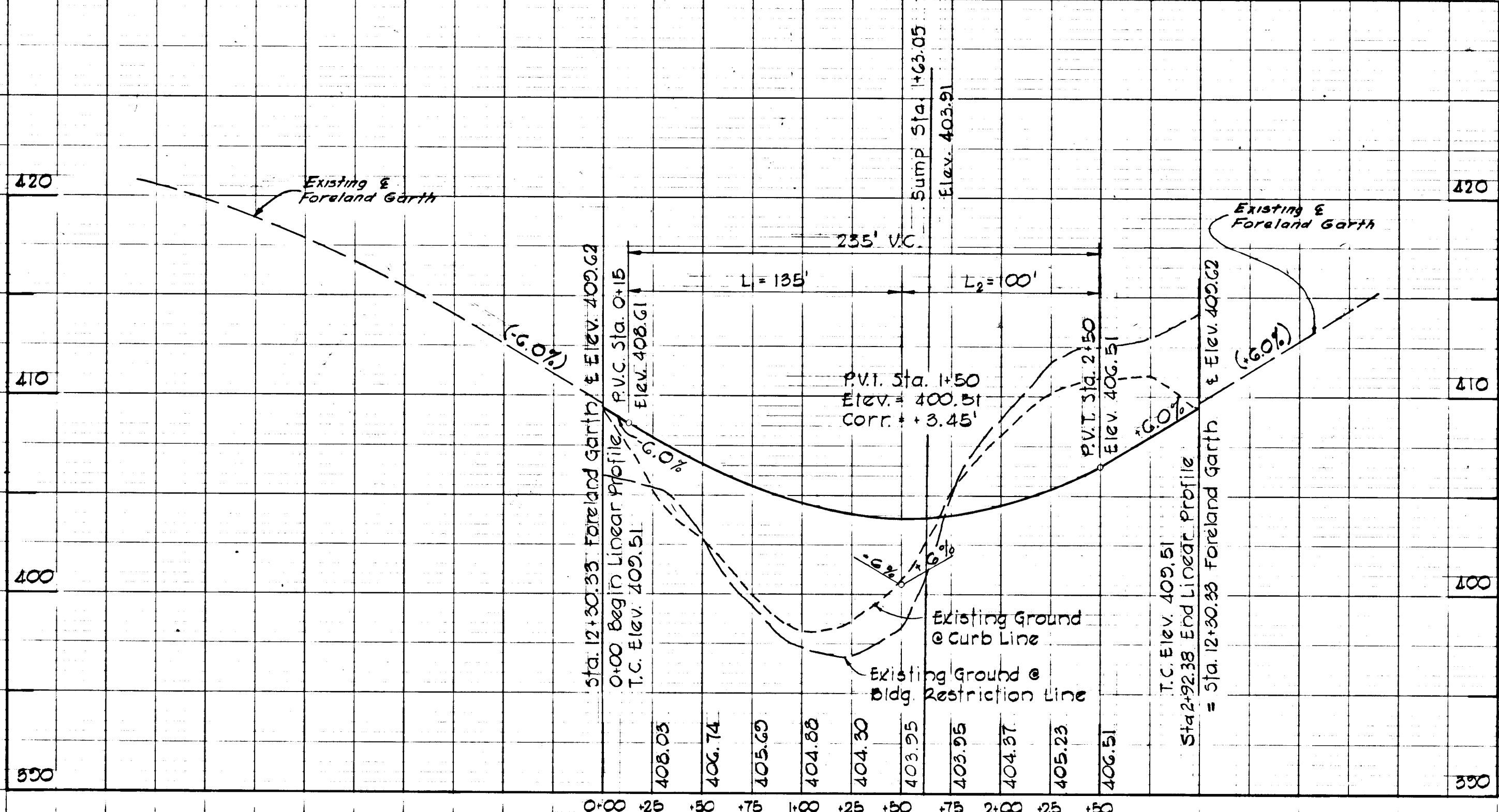
PURDUM & JESCHKE
CONSULTING ENGINEERS
& LAND SURVEYORS

1023 NORTH CALVERT STREET
BALTIMORE, MARYLAND 21202

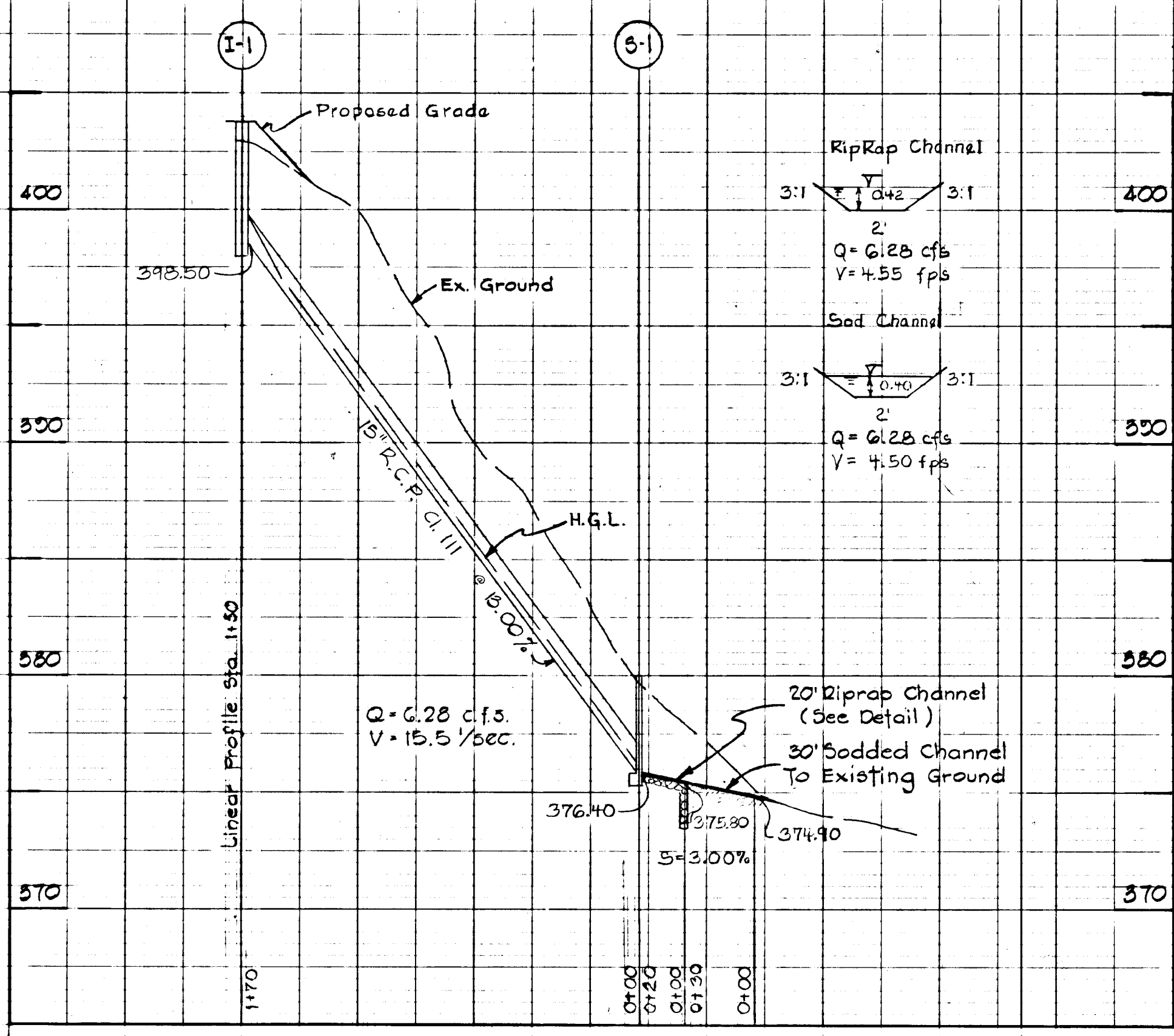


DATE
BY
NO.
PLAN
REVISIONS
NOTE BOOK ALIGNMENT CHECKED
REVISIONS CHECKED
BY
DATE

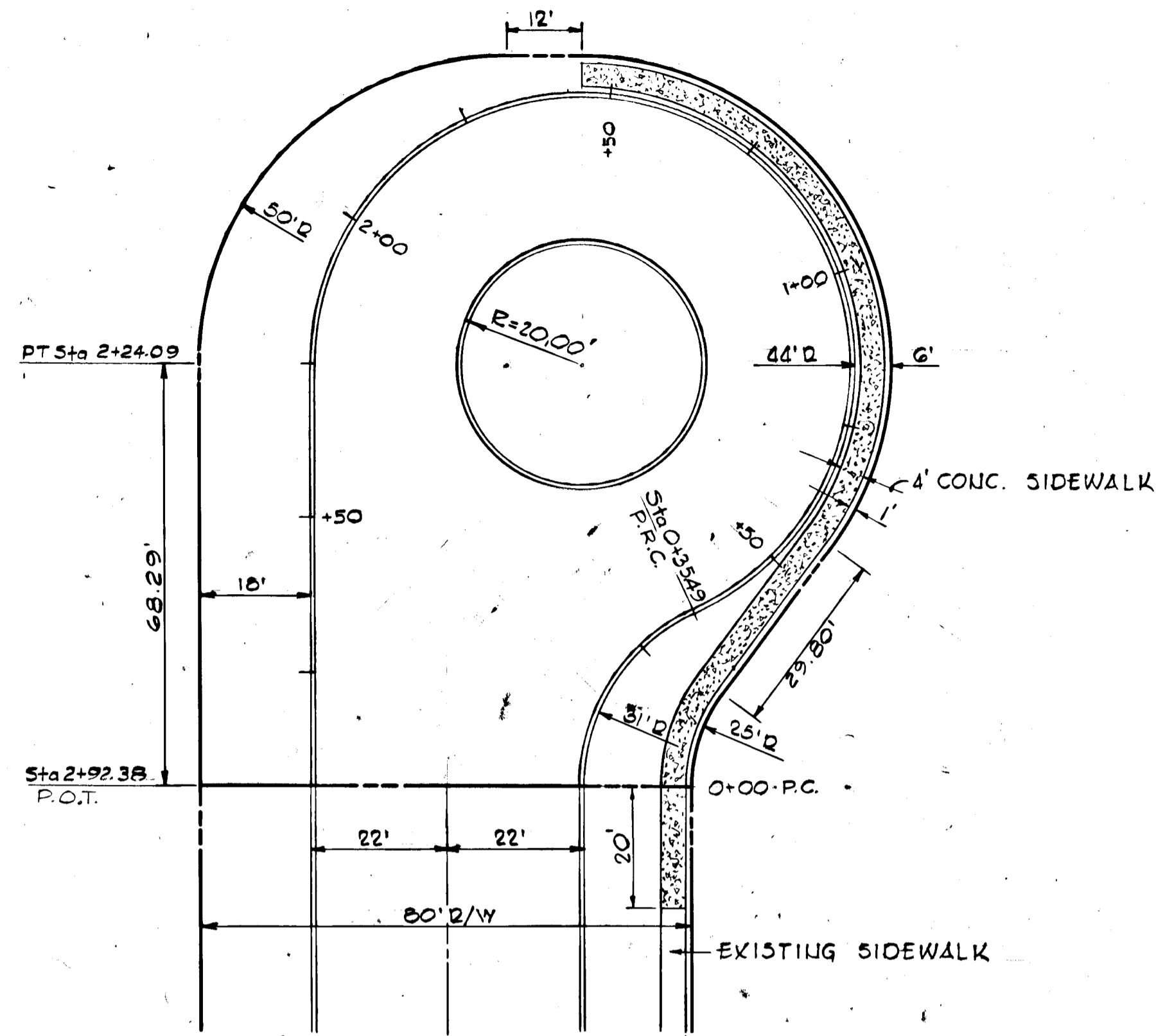
DATE
BY
NO.
PROFILE
REVISIONS
NOTE BOOK GRADES CHECKED
REVISIONS CHECKED
BY
DATE



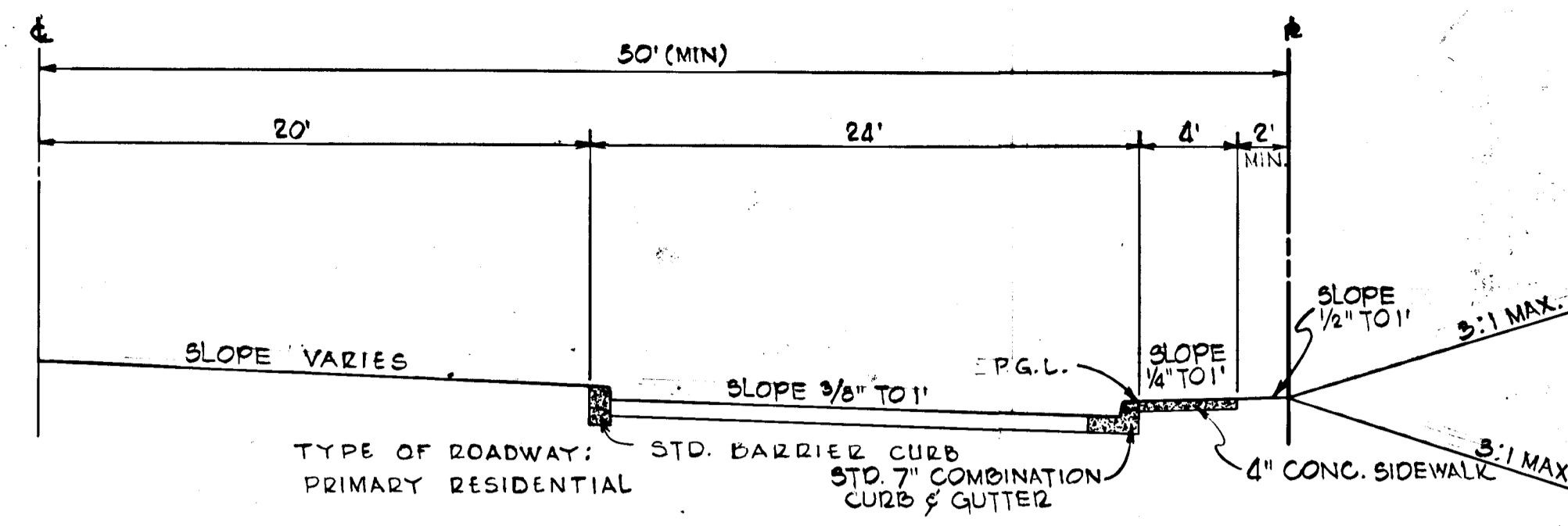
LINEAR PROFILE FORELAND GARTH
Scale: Horiz. 1"=50'
Vert. 1"=5'
NOTE: ELEVATIONS ARE TOP OF CURB ELEVATIONS



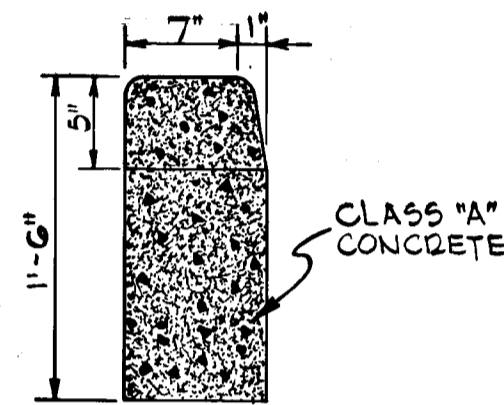
STORM DRAIN PROFILE
SCALE: HORIZ. 1"=50'
VERT. 1"=5'



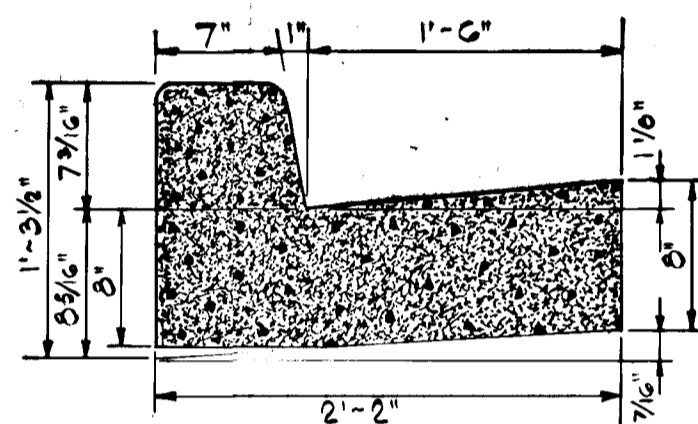
CUL-DE-SAC DETAIL
SCALE: 1" = 20'



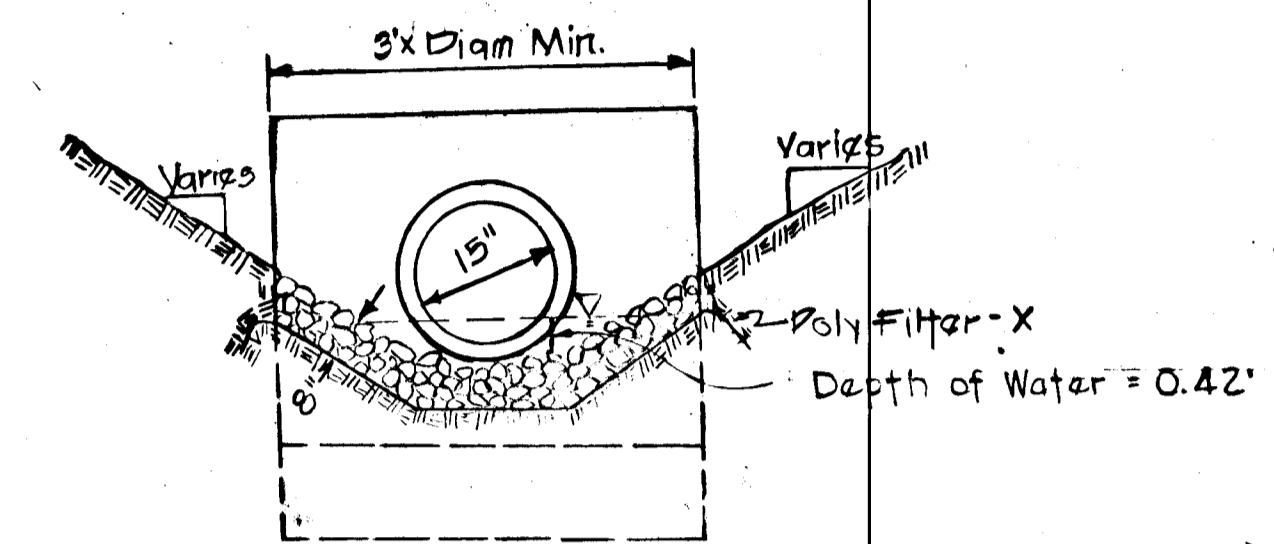
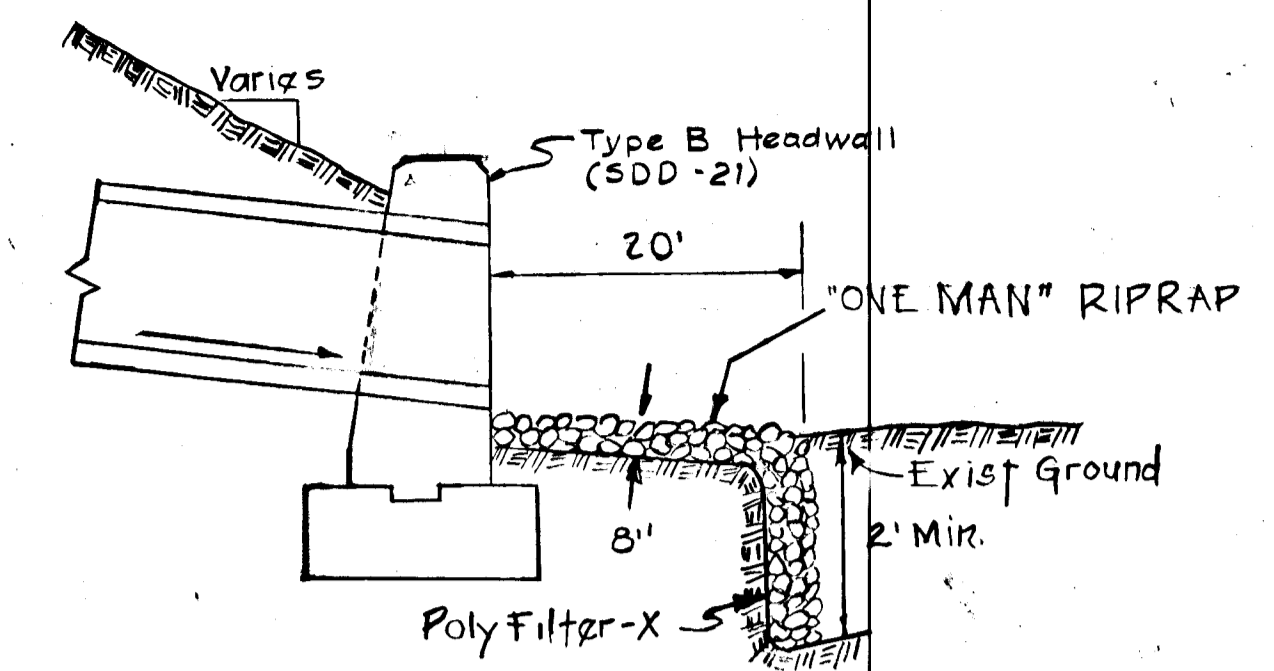
TYPICAL SECTION
SCALE: 1" = 6'



STANDARD BARRIER CURB
D-40 Pg 95

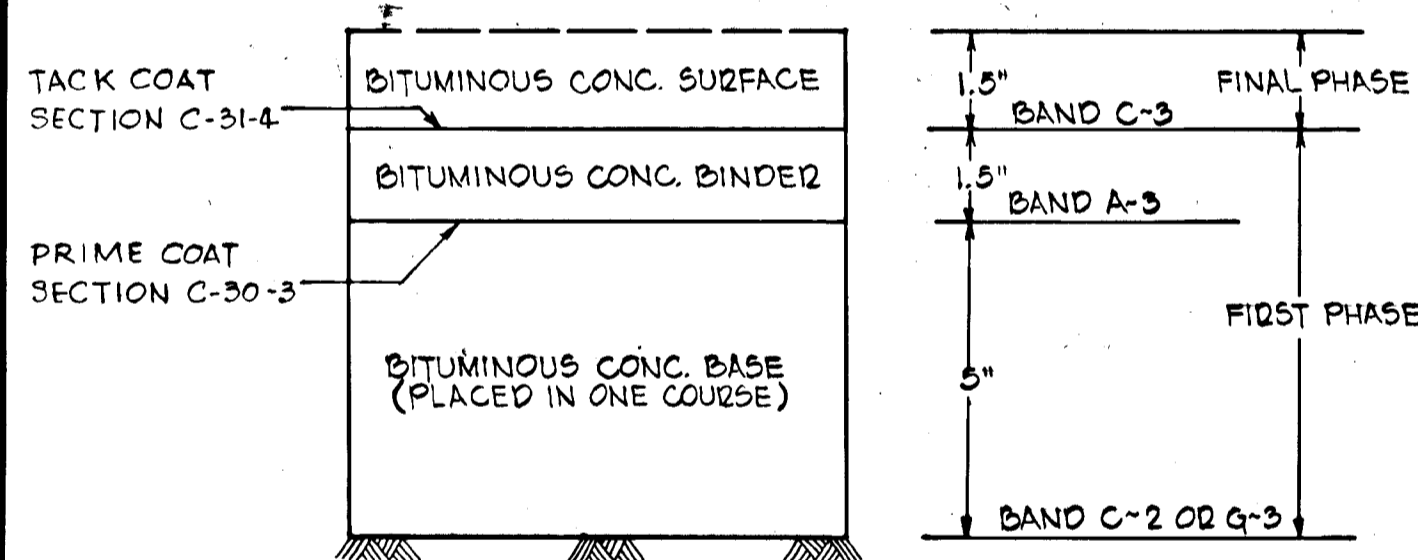


STANDARD 7" COMBINATION CURB & GUTTER
D-40 Pg 95

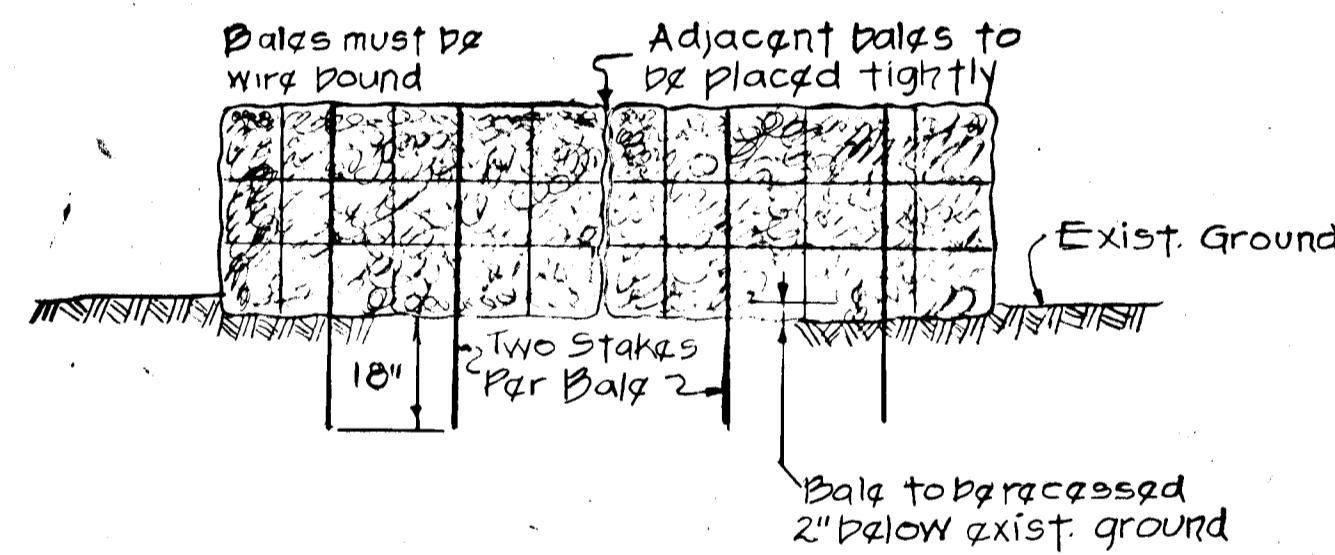


RIPRAP CHANNEL DETAIL
No Scale

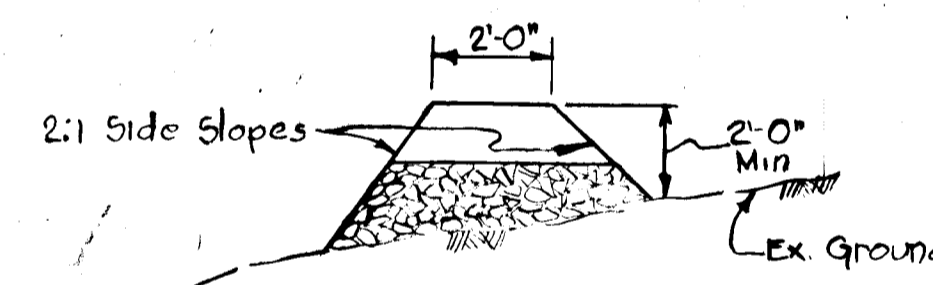
APPROVED
DIVISION OF LAND DEVELOPMENT
AND TRANSPORTATION PLANNING
HOWARD COUNTY, MARYLAND
DATE 5/31/74
J. Weibel



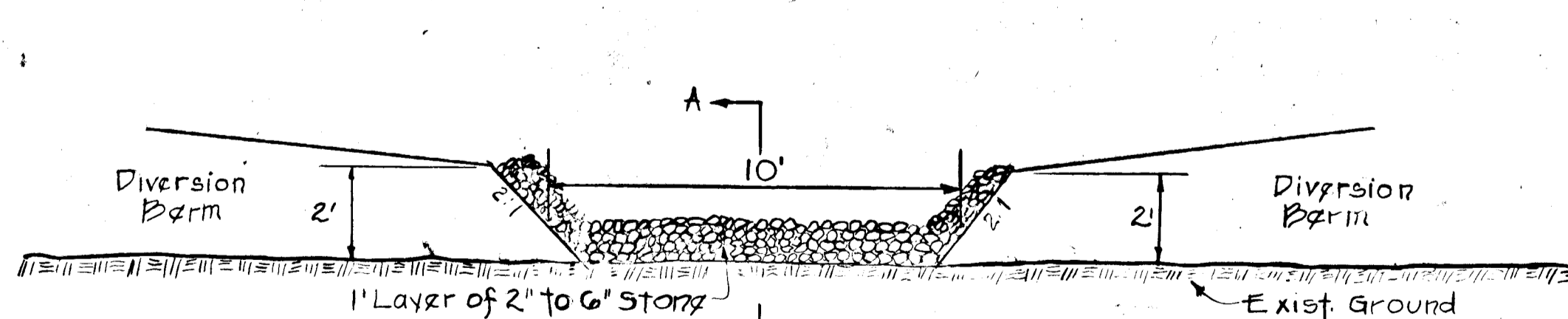
D-10 Pg 65
PAVING SECTION
NO SCALE



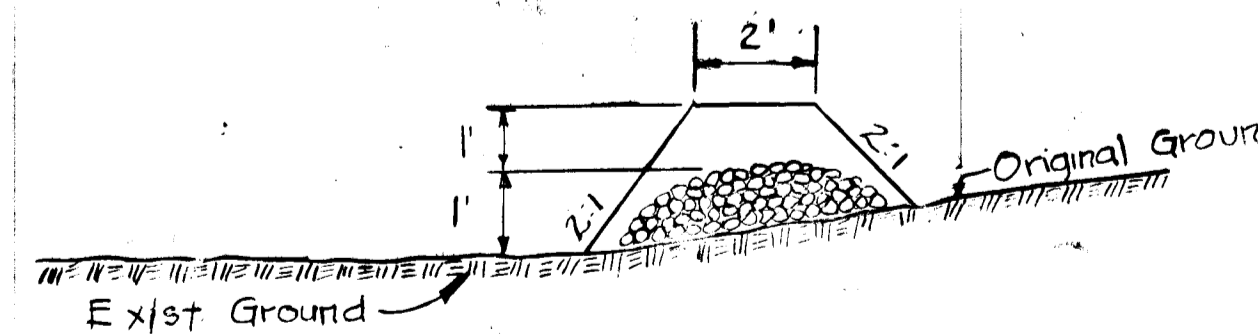
STRAW BALE DETAIL
No Scale



DIVERSION BERM
No Scale



STONE FILTER



SECTION A-A

PROFESSIONAL ENGINEER
"I certify that this plan for Erosion and Sediment Control represents a practical and workable plan based on my personal knowledge of the site conditions and that it was prepared in accordance with the requirements of the Howard Soil Conservation District."
Gay G. Weibel, Jr. 5-28-74
Date
Reg. No. 8182

HOWARD SOIL CONSERVATION DISTRICT:
Reviewed for Howard Soil Conservation District and meets Technical Requirements.
James M. Nelson 5-31-74
Signature Date
THIS DEVELOPMENT PLAN IS APPROVED FOR SOIL EROSION AND SEDIMENT CONTROL BY THE HOWARD SOIL CONSERVATION DISTRICT.
APPROVED: *Kathleen S. Schum* 5-31-74
Howard Soil Conservation Dist. Date

DEVELOPER
"I certify that all development and/or construction will be done according to this plan of development and plan for Erosion and Sediment Control, and I authorize periodic on-site inspection by the Howard Soil Conservation District or their authorized agents, as are deemed necessary."
Deviation from this plan will not be made unless authorized by the Howard Soil Conservation District.
By: *John F. Lopez* 5/30/74
Signature Date

APPROVED: Howard County Department of Public Works
B. M. McKeand 5/31/74
Chief: Bureau of Highways Date
APPROVED: Howard County Office of Planning and Zoning
K. H. Clauson 5/31/74
Chief: Division of Land Development and Transportation Planning Date

Rev. No.	Rev. No.	Revision Description

COLUMBIA
MARYLAND

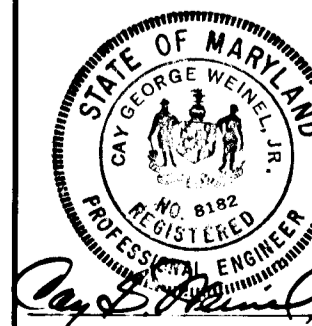
OWNER AND DEVELOPER
HOWARD RESEARCH AND DEVELOPMENT CORP.
COLUMBIA, MARYLAND 21044

PROJECT AREA VILLAGE OF LONGREACH
SECTION 1 AREA 7
6th ELEC. DISTRICT HOWARD COUNTY, MARYLAND

PROJECT TITLE
ROADWAY & SEDIMENT CONTROL DETAILS

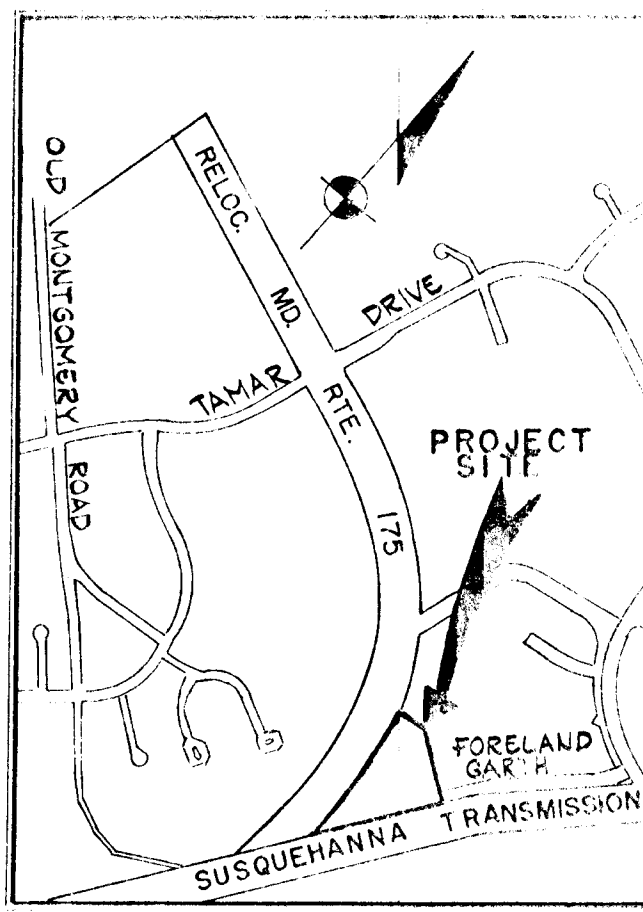
Des. By K.J.C., J.M.A. Scale AS SHOWN Dwg. No. 2 of 4
Dwn. By D.R.B. Date MAY 28, 1974 C.C.F. No.
Chk. By K.J.C. Approved

PURDUM AND JESCHKE
CONSULTING ENGINEERS
& LAND SURVEYORS
1023 N. CALVERT ST.
BALTIMORE, MARYLAND 21202



NOTE:
ALL CONSTRUCTION SHOWN WITHIN THE
RIGHT-OF-WAY FOR STATE RTE. 175 IS
PROPOSED AT THIS TIME, AND HAS BEEN
TAKEN FROM AVAILABLE PLANS

Note: Elevations Shown Are
The Inside Edge Of Paving
Of The Easement Lane



VICINITY MAP
SCALE: 1"=1200'

- NOTES:
1. Present Zoning - New Town (Apts.)
 2. Total area of site = 5.9± Acres
Area of public R/W = 0.2± Acres
Area of private R/W = 0.0 Acres
Net Area of Parcel = 5.7± Acres
No. of Parcels = 1
 3. Topographic data prepared by Maps, Inc.
 4. Water and sewage systems to be public.
 5. Foreland Garth cul-de-sac to be public.
 6. Minimum building setback restrictions from property lines and right-of-way lines of any public road to be in accordance with the Final Development Plan Criteria.
 7. All material, details and methods of construction shall be in accordance with the latest revisions of the Howard County Road Construction Code and Standard Specifications.

APPROVED
DIVISION OF LAND DEVELOPMENT
AND TRANSPORTATION PLANNING
HOWARD COUNTY, MARYLAND
DATE: 5/31/74
J. N. C.

LEGEND
PROP. SAN. SEWER
PROP. ROADS
EX. ROADS
EX. STORM DRAINS
EX. WATER
EX. CONTOURS
PROP. STORM DRAINS
NOTE: Elevations Shown Are On & Stations
(By others)
(By developer)

VILLAGE OF LONGREACH
SECTION I, AREA 2

VILLAGE OF LONGREACH
SECTION I, AREA 5
PLAT BOOK 21, FOLIO 82

FORELAND
GARTH

MISSION
145/13

COMPANY

SUSQUEHANNA
145/17

RELOC. MD. RTE. 175
(R/W PLAT NOS. 41575 & 41576)

FRITZ & JESKE
CONSULTING ENGINEERS
& LAND SURVEYORS
1023 N. CALVERT ST.
BETHESDA, MARYLAND 21202

REG. NO. 415172

JOSEPH W. SKINNER
RHM 350/172
ZONED R-40

APPROVED: Howard County Department of Public Works
J. M. McLeod 5/31/74
Chief: Bureau of Highways Date

APPROVED: Howard County Office of Planning and Zoning
J. H. Clauson 5/31/74
Chief: Division of Land Development and Transportation Date

COLUMBIA
MARYLAND

HOWARD RESEARCH AND DEVELOPMENT CORP.
COLUMBIA, MARYLAND 21044

PROJECT TITLE:
DRAINAGE AREA MAP
VILLAGE OF LONGREACH
SECTION I AREA 7
6th ELEC. DISTRICT HOWARD CO., MARYLAND

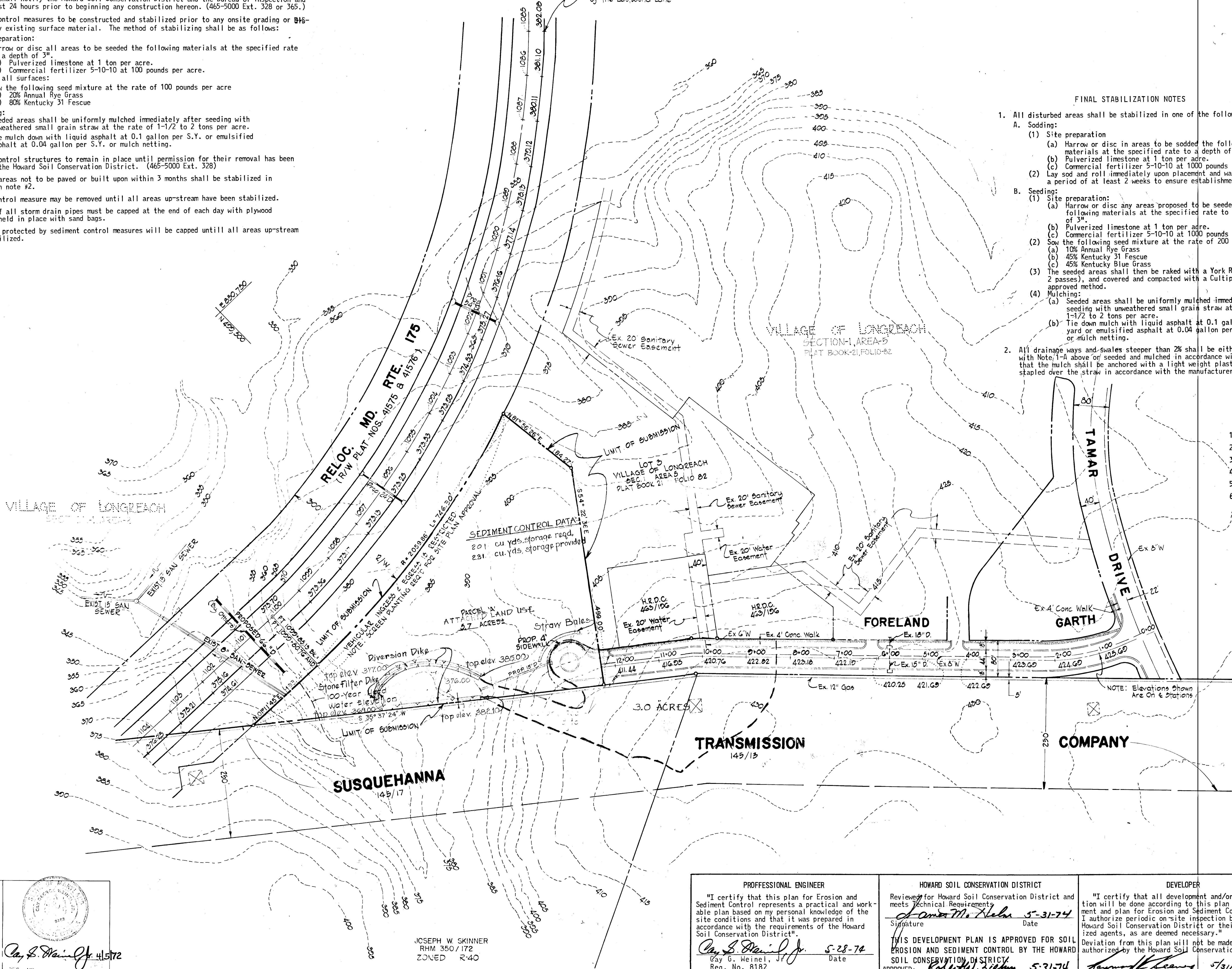
SCALE 1"=100'
DATE May 28, 1974
DES. BY N.J.C.
DWN. BY D.R.B.
CK. BY
APP. BY

DWG. NO. 3 of 4
CF NO.

SEDIMENT CONTROL NOTES

- The developer shall notify the Howard Soil Conservation District and the Bureau of Inspection and Permits at least 24 hours prior to beginning any construction hereon. (465-5000 Ext. 328 or 365.)
- All sediment control measures to be constructed and stabilized prior to any onsite grading or disturbance to any existing surface material. The method of stabilizing shall be as follows:
 - Site Preparation:
 - Harrow or disc all areas to be seeded the following materials at the specified rate to a depth of 3".
 - Pulverized limestone at 1 ton per acre.
 - Commercial fertilizer 5-10-10 at 100 pounds per acre.
 - Seeding all surfaces:
 - Sow the following seed mixture at the rate of 100 pounds per acre
 - 20% Annual Rye Grass
 - 80% Kentucky 31 Fescue
 - Mulching:
 - Seeded areas shall be uniformly mulched immediately after seeding with unweathered small grain straw at the rate of 1-1/2 to 2 tons per acre.
 - Tie mulch down with liquid asphalt at 0.1 gallon per S.Y. or emulsified asphalt at 0.04 gallon per S.Y. or mulch netting.
- All sediment control structures to remain in place until permission for their removal has been obtained from the Howard Soil Conservation District. (465-5000 Ext. 328)
- All disturbed areas not to be paved or built upon within 3 months shall be stabilized in accordance with note #2.
- No sediment control measure may be removed until all areas up-stream have been stabilized.
- The open end of all storm drain pipes must be capped at the end of each day with plywood sheathing and held in place with sand bags.
- All inlets not protected by sediment control measures will be capped until all areas up-stream have been stabilized.

Note: Elevations Shown Are
The Inside Edge Of Paving
Of The Eastbound Lane



FINAL STABILIZATION NOTES

- All disturbed areas shall be stabilized in one of the following manners:
 - Sodding:
 - Site preparation
 - Harrow or disc in areas to be sodded the following materials at the specified rate to a depth of 3".
 - Pulverized limestone at 1 ton per acre.
 - Commercial fertilizer 5-10-10 at 1000 pounds per acre.
 - Lay sod and roll immediately upon placement and water for a period of at least 2 weeks to ensure establishment.
 - Seeding:
 - Site preparation:
 - Harrow or disc any areas proposed to be seeded the following materials at the specified rate to a depth of 3".
 - Pulverized limestone at 1 ton per acre.
 - Commercial fertilizer 5-10-10 at 1000 pounds per acre.
 - Sow the following seed mixture at the rate of 200 pounds per acre
 - 10% Annual Rye Grass
 - 45% Kentucky 31 Fescue
 - 45% Kentucky Blue Grass
 - The seeded areas shall then be raked with a York Rake (minimum of 2 passes), and covered and compacted with a Cultipacker or other approved method.
 - Mulching:
 - Seeded areas shall be uniformly mulched immediately after seeding with unweathered small grain straw at the rate of 1-1/2 to 2 tons per acre.
 - Tie down mulch with liquid asphalt at 0.1 gallon per square yard or emulsified asphalt at 0.04 gallon per square yard or mulch netting.
 - All drainage ways and swales steeper than 2% shall be either sodded in accordance with Note 1-A above or seeded and mulched in accordance with Note 1-B, above except that the mulch shall be anchored with a light weight plastic or cloth netting to be stapled over the straw in accordance with the manufacturer's recommendations.

VICINITY MAP
SCALE: 1"=1200'

APPROVED
DIVISION OF LAND DEVELOPMENT
AND TRANSPORTATION PLANNING
HOWARD COUNTY, MARYLAND
DATE: 5/31/74
J. W. Clauson

SCHEDULE OF OPERATIONS

- Install all sediment control devices
- Clear and Grub Site
- Perform initial grading within Right-of-Way
- Construct road storm drains
- Perform final grading
- Stabilize site in accordance with final notes

LEGEND
PROP. SAN. SEWER
PROP. P. ROADS
EX. ROADS
EX. STORM DRAIN
EX. WATER
EX. CONTOURS
PROP. STORM DRAINS
(By others)
(By developer)

APPROVED: Howard County Department of Public Works
J. W. Clauson 5/31/74
Chief: Bureau of Highways Date

APPROVED: Howard County Office of Planning and Zoning
J. W. Clauson 5/31/74
Chief: Division of Land Development and Transportation Date

COLUMBIA MARYLAND

HOWARD RESEARCH AND DEVELOPMENT CORP.
COLUMBIA, MARYLAND 21044

PROJECT TITLE:	SEDIMENT CONTROL PLAN	
	VILLAGE OF LONGREACH SECTION I AREA 7	
	6th ELEC. DISTRICT	HOWARD CO., MARYLAND
SCALE:	1"=100'	DWG. NO.
DATE:	May 28 1974	
DES. BY:	R.J.C.	4 of 4
DWN. BY:	D.R.B.	
CK. BY:		
APP. BY:		CF. NO.

PROFESSIONAL ENGINEER
"I certify that this plan for Erosion and Sediment Control represents a practical and workable plan based on my personal knowledge of the site conditions and that it was prepared in accordance with the requirements of the Howard Soil Conservation District."
Ray G. Weiner, Jr. 5-28-74
Ray G. Weiner, Jr. Date
Reg. No. 8182

HOWARD SOIL CONSERVATION DISTRICT
Reviewed for Howard Soil Conservation District and meets Technical Requirements
James M. Nelson 5-31-74
Signature Date
THIS DEVELOPMENT PLAN IS APPROVED FOR SOIL EROSION AND SEDIMENT CONTROL BY THE HOWARD SOIL CONSERVATION DISTRICT
APPROVED: *Robert W. Ziehm* 5-31-74
Howard Soil Conservation Dist.

DEVELOPER
"I certify that all development and/or construction will be done according to this plan of development and plan for Erosion and Sediment Control and I authorize periodic on-site inspection by the Howard Soil Conservation District or their authorized agents, as are deemed necessary."
Deviation from this plan will not be made unless authorized by the Howard Soil Conservation District.
James M. Nelson 5/31/74
Signature Date

JOSEPH W. SKINNER
RHM 350/172
ZONED R-40

JOHN & JESUKE
CONSULTING ENGINEERS
SURVEYORS
1417 ST. ...
REG. NO. ...
Ray G. Weiner, Jr. 415172