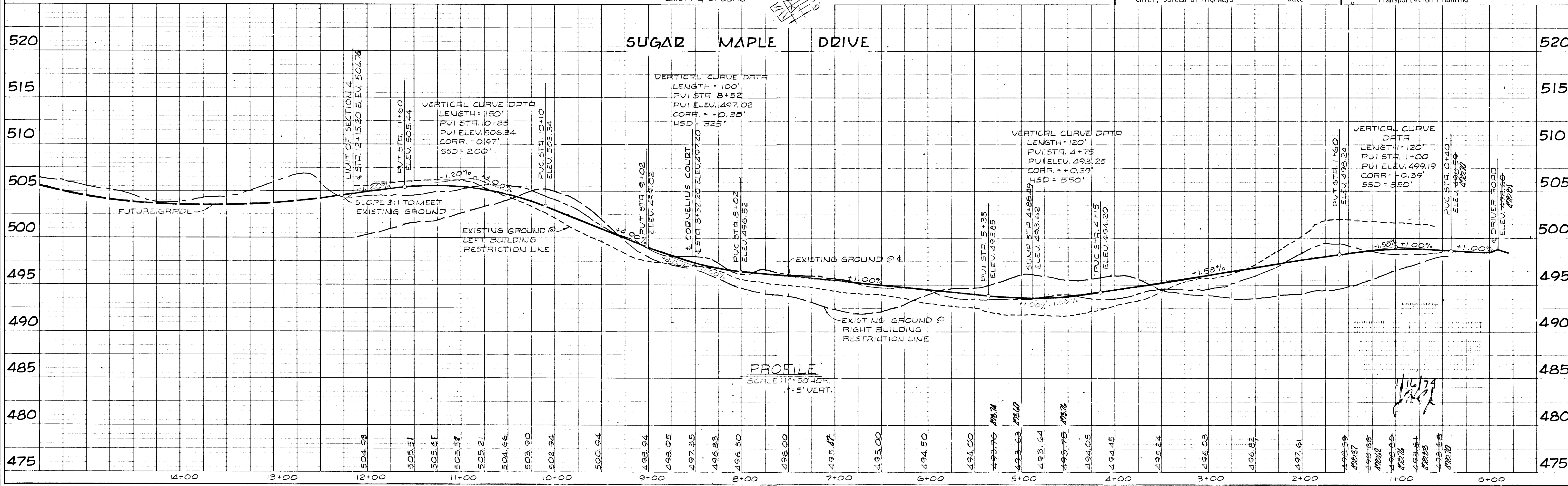
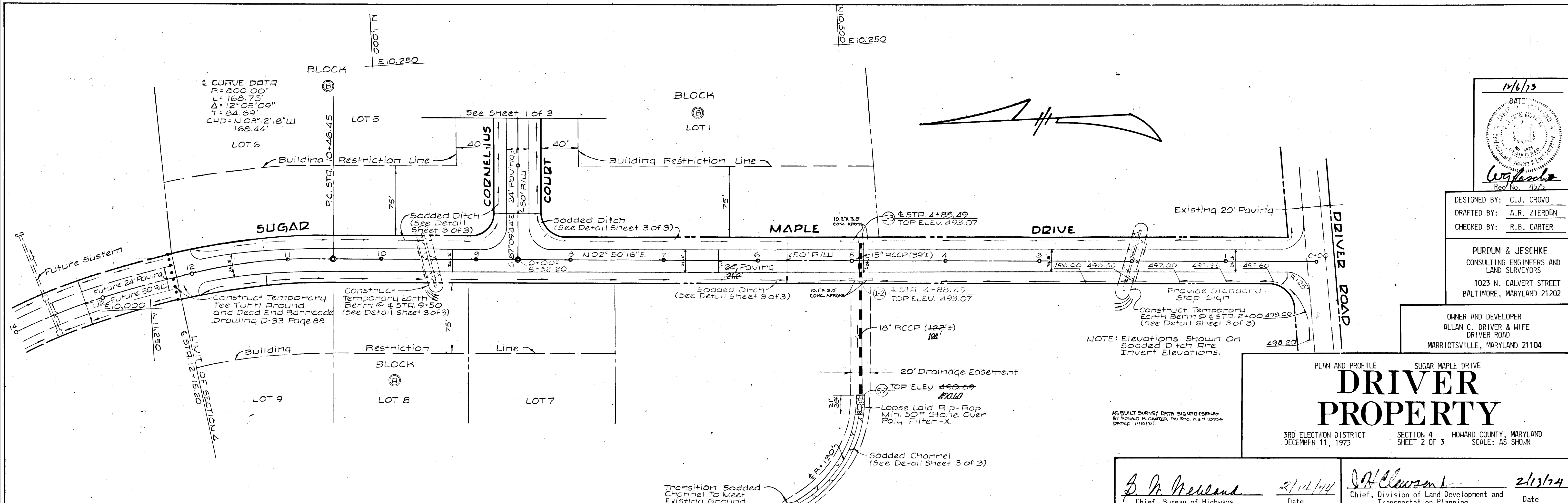




DATE	
BY	
PLAN	
NO. OF SHEETS	
NO. OF THIS SHEET	
NO.	

DATE	
BY	
PROFILE	
NO. OF SHEETS	
NO. OF THIS SHEET	
NO.	



12/6/73  
 DATE  
 REGISTERED PROFESSIONAL ENGINEER  
 STATE OF MARYLAND  
 No. 4575

DESIGNED BY: C.J. GROVO  
 DRAFTED BY: A.R. ZIERDEN  
 CHECKED BY: R.B. CARTER

PURPUM & JESCHKE  
 CONSULTING ENGINEERS AND  
 LAND SURVEYORS  
 1023 N. CALVERT STREET  
 BALTIMORE, MARYLAND 21202

OWNER AND DEVELOPER  
 ALLAN C. DRIVER & WIFE  
 DRIVER ROAD  
 MARRIOTTVILLE, MARYLAND 21104

PLAN AND PROFILE SUGAR MAPLE DRIVE  
**DRIVER PROPERTY**  
 3RD ELECTION DISTRICT SECTION 4 HOWARD COUNTY, MARYLAND  
 DECEMBER 11, 1973 SHEET 2 OF 3 SCALE: AS SHOWN

*B. M. McCreland* 2/14/74  
 Chief, Bureau of Highways Date

*A. H. Clewman* 2/13/74  
 Chief, Division of Land Development and Transportation Planning Date



DATE: \_\_\_\_\_  
 BY: \_\_\_\_\_  
 CHECKED: \_\_\_\_\_  
 NO. \_\_\_\_\_

**DEVELOPER'S CERTIFICATE**

I certify that all development and/or construction will be done according to this plan of development and plan for Erosion and Sediment Control, and I also authorize periodic on-site inspection by the Howard Soil Conservation District or their authorized agents, as are deemed necessary. Deviation from this plan will not be made unless authorized by the Howard Soil Conservation District.

*Allan C. Driver* 12/3/73  
 Date

**ENGINEER'S CERTIFICATE**

I certify that this plan for Erosion and Sediment Control represents a practical and workable plan based on my knowledge of the site conditions and that it was prepared in accordance with the requirements of the Howard Soil Conservation District.

*W. J. Groves* 12/6/73  
 Signature of Engineer Date

Reviewed for Howard County Soil Conservation District and meets Technical Requirements

*Robert W. Zierden* 2-8-74  
 U.S. Soil Conservation Service Date

This development plan is approved for Soil Erosion and Sediment Control by the Howard Soil Conservation District.

APPROVED: *Robert W. Zierden* 2-8-74  
 District Coordinator Date  
 Howard Soil Conservation District

**GENERAL NOTES**

1) All construction shown hereon shall be in accordance with the Howard County Road Construction Code and Standard Specifications dated November 27, 1962 and revised August 1967.

2) Reference to page and drawing numbers shown hereon and referred to the above mentioned Road Construction Code and Standard Specifications.

3) Design Speed - 30mph

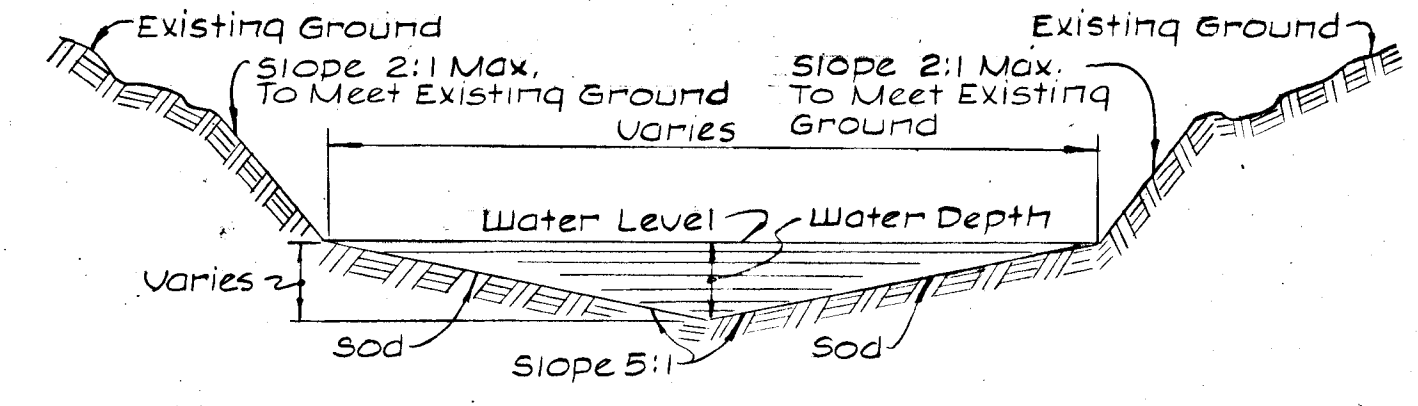
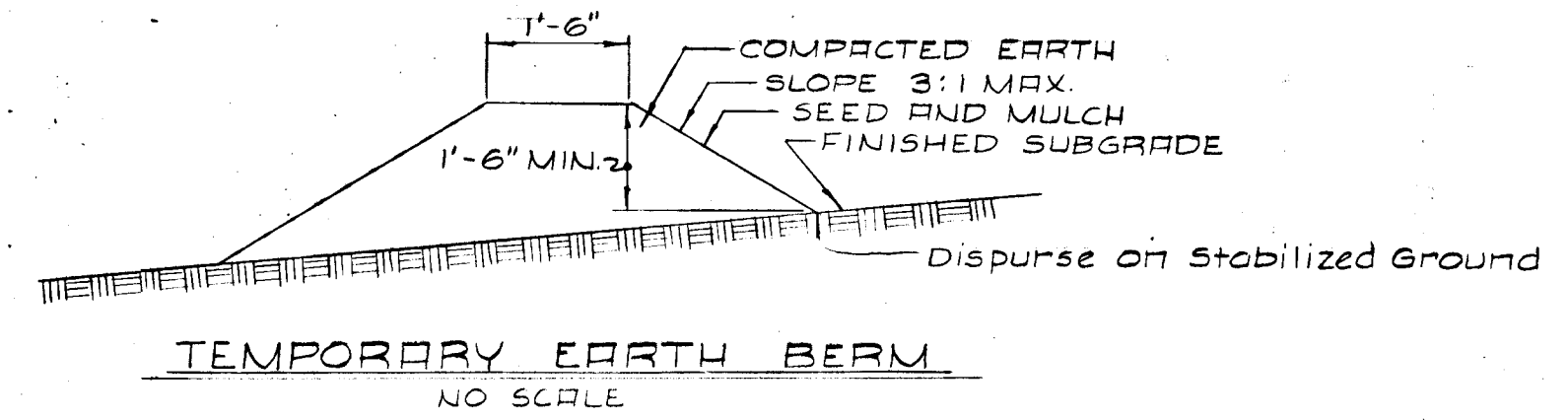
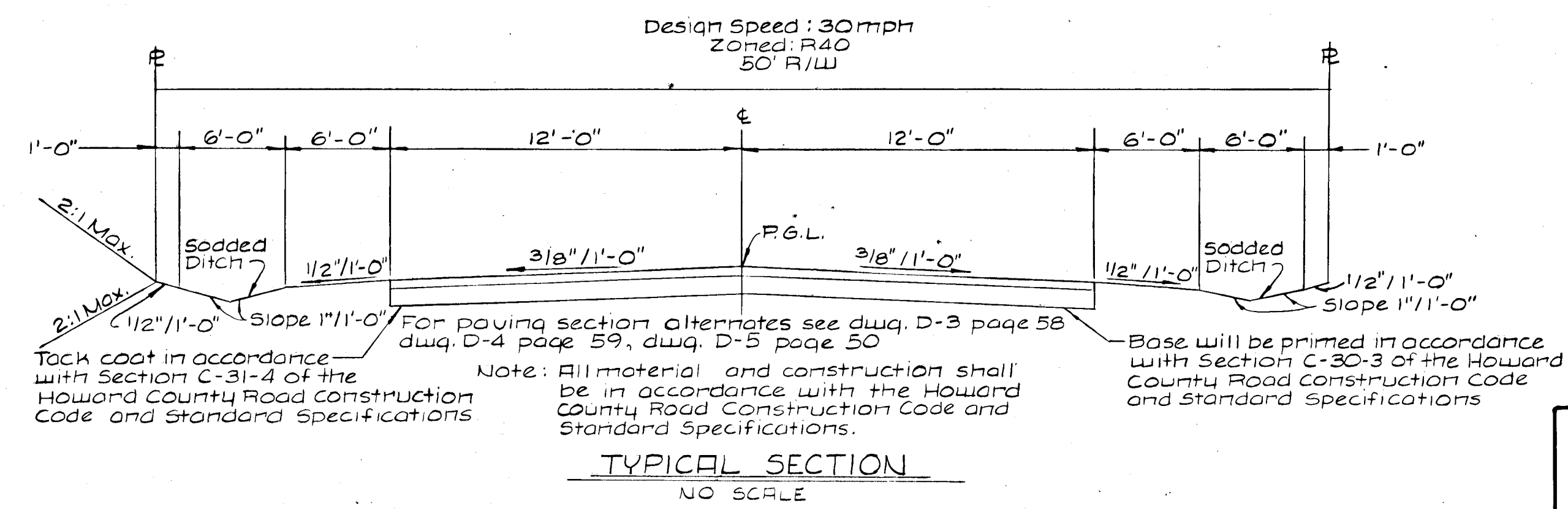
**STRUCTURE SCHEDULE**

STRUCTURE	TYPE	INV. IN	INV. OUT	OP. ELEV.	STD. DETAIL
I-1	"K"	486.75	490.75	P.148 Dwg. D-93	
I-2	"K"	489.78	493.07	P.148 Dwg. D-93	
I-3	"K"	490.07	493.07	P.148 Dwg. D-93	
S-1	"C"	483.57	485.57	P.107 Dwg. D-56	
S-2	"C"	488.44	490.69	P.107 Dwg. D-56	

**SEDIMENT CONTROL NOTES**

- The developer shall notify the Howard County Soil Conservation District at least 24 hours prior to beginning any construction shown hereon (465-3180).
- Berms, sediment traps, etc., to be constructed prior to any onsite grading or disturbance to any existing surface material, and are to be stabilized as soon as constructed.
- All sediment control structures to remain in place until permission for their removal has been obtained from the Howard Soil Conservation District. (465-3180 or 465-5000 Ext. 291).
- All graded areas not to be sodded shall be stabilized by seeding and mulching in accordance with the following:
  - Site Preparation:
    - Harrow or disc in areas proposed to be seeded the following materials at the specified rate, to a depth of 3".
      - Pulverized limestone at 1 1/2 tons/acre.
      - Commercial fertilizer 5-10-10 at 3/4 tons/acre.
      - Super phosphate at 600 lbs/acre.
  - Seeding:
    - Sow the following seed mixture at the rate of 200 lbs/acre with a mechanical spreader.
      - 20% Annual Rye Grass
      - 80% Kentucky 31 Fescue
    - The seeded area shall then be raked with a York Rake (minimum of 2 passes), covered and compacted with Cultipacker or other approved method.
  - Mulching:
    - Seeded areas shall be uniformly mulched immediately after seeding with unweathered small grain straw at the rate of 1 1/2 to 2 tons/acre.
    - Tie mulch down with liquid asphalt at 0.1 gal/s.y. or emulsified asphalt at 0.04 gal/s.y.

**SUGAR MAPLE DRIVE AND CORNELIUS COURT**



**CHANNEL DESIGN DATA @ S-2**

R = 3.44'	S = 1.00%
P = 8.46'	S <sub>1/2</sub> = 0.1000
R = 0.41	Water Depth = 0.83'
R <sup>2/3</sup> = 0.552	n = 0.03
U = 1.485/m x R <sup>2/3</sup> x S <sup>1/2</sup>	
U = 49.50 x 0.552 x 0.1000	
U = 2.7 fps	
Q = R x U	
Q = 3.44 x 2.7	
Q = 9.3 cfs	

**CHANNEL DESIGN DATA @ S-1**

R = 1.40'	S = 3.18%
P = 5.40'	S <sub>1/2</sub> = 0.1789
R = 0.26	n = 0.03
R <sup>2/3</sup> = 0.407	Water Depth = 0.53'
U = 1.485/m x R <sup>2/3</sup> x S <sup>1/2</sup>	
U = 49.50 x 0.407 x 0.1789	
U = 3.6 fps	
Q = R x U	
Q = 1.40 x 3.6	
Q = 5.0 cfs	

AS-BUILT SURVEY DATA SIGNED & SEALED BY RONALD B. CARTER  
 MD. REG. P.L.S. 10704 DATED 11/10/82

12/6/73  
 DATE  
 W. J. GROVES  
 REG. NO. 4575

DESIGNED BY: C.J. GROVO  
 DRAFTED BY: A.R. ZIERDEN  
 CHECKED BY: R.B. CARTER

PURDUM & JESCHKE  
 CONSULTING ENGINEERS AND  
 LAND SURVEYORS  
 1023 N. CALVERT STREET  
 BALTIMORE, MARYLAND 21202

OWNER AND DEVELOPER  
 ALLAN C. DRIVER & WIFE  
 DRIVER ROAD  
 MARRIOTTVILLE, MARYLAND 21104

SEDIMENT CONTROL DETAILS AND STORM DRAIN PROFILES

# DRIVER PROPERTY

3RD ELECTION DISTRICT SECTION 4 HOWARD COUNTY, MARYLAND  
 DECEMBER 11, 1973 SHEET 3 OF 3 SCALE: AS SHOWN

*J. M. McLeod* 2/14/74  
 Chief, Bureau of Highways Date

*J. H. Clawson* 2/13/74  
 Chief, Division of Land Development and Transportation Planning Date

