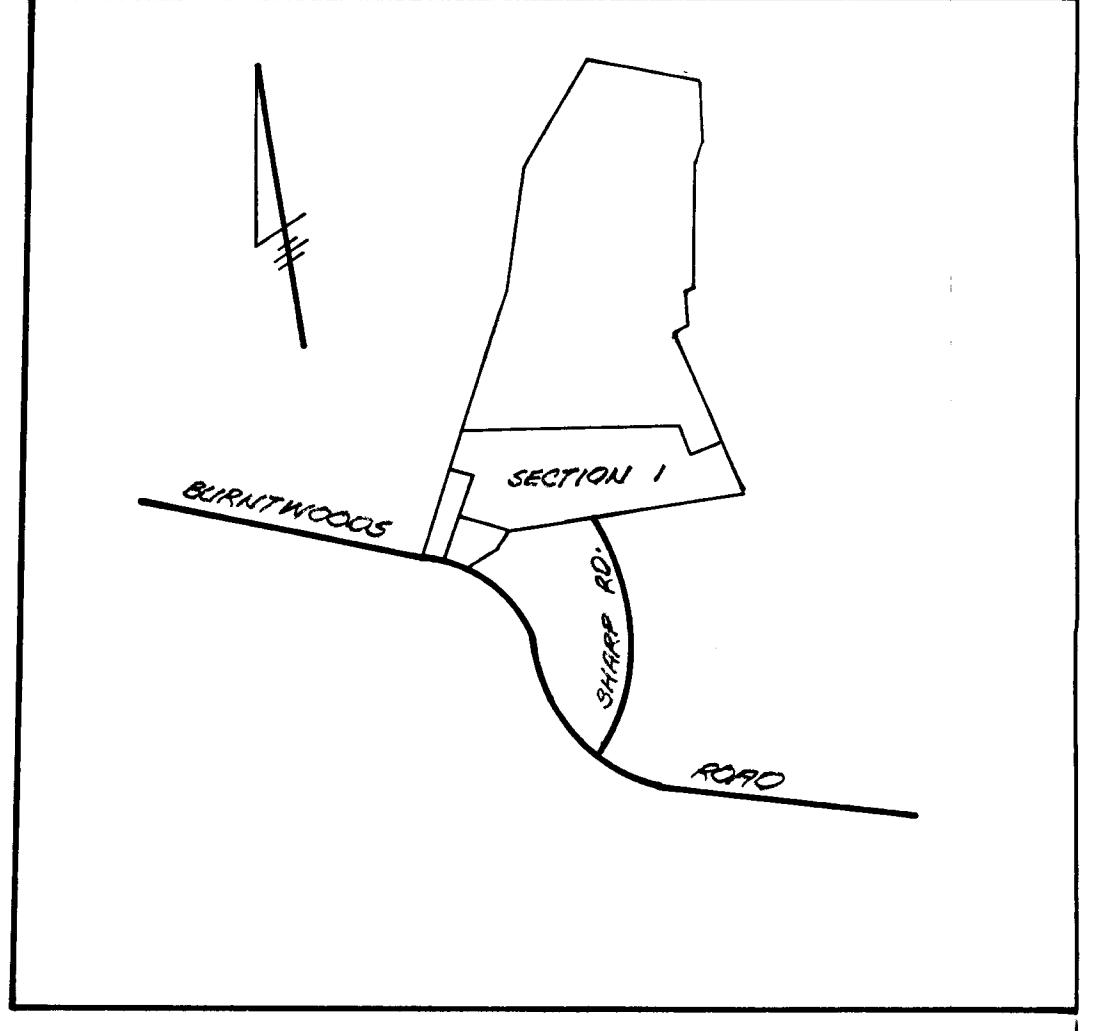


DEPARTMENT OF PUBLIC WORKS:
D. M. McLeod 10/11/73
 CHIEF, BUREAU OF HIGHWAYS DATE

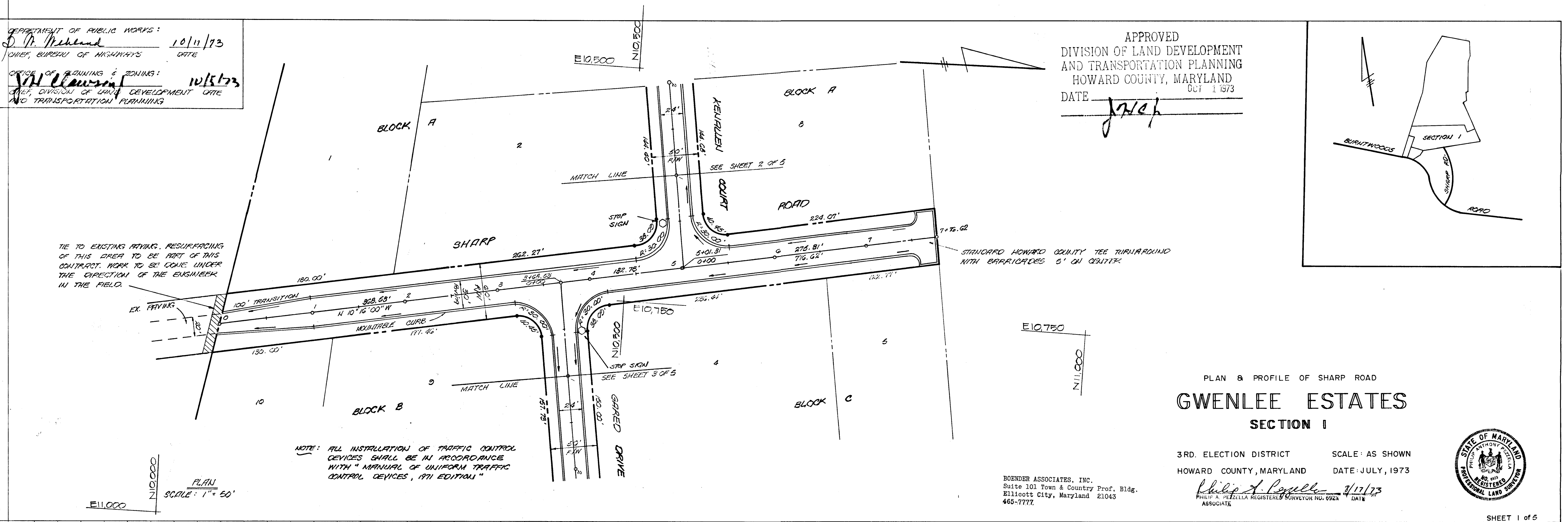
OFFICE OF PLANNING & ZONING:
W. H. Clouston 10/5/73
 CHIEF, DIVISION OF LAND DEVELOPMENT AND TRANSPORTATION PLANNING DATE

APPROVED
 DIVISION OF LAND DEVELOPMENT
 AND TRANSPORTATION PLANNING
 HOWARD COUNTY, MARYLAND
 DATE *JWH* OCT 1 1973



DATE	
BY	
SURVEYED	
PLOTTED	
NOTED	
NO.	

DATE	
BY	
SURVEYED	
PLOTTED	
NOTED	
NO.	



PLAN & PROFILE OF SHARP ROAD
GWENLEE ESTATES
 SECTION I

3RD. ELECTION DISTRICT SCALE: AS SHOWN
 HOWARD COUNTY, MARYLAND DATE: JULY, 1973

BOENDER ASSOCIATES, INC.
 Suite 101 Town & Country Prof. Bldg.
 Ellicott City, Maryland 21043
 465-7777.

Philip A. Penella 7/17/73
 PHILIP A. PENELLA REGISTERED SURVEYOR NO. 6924 DATE
 ASSOCIATE

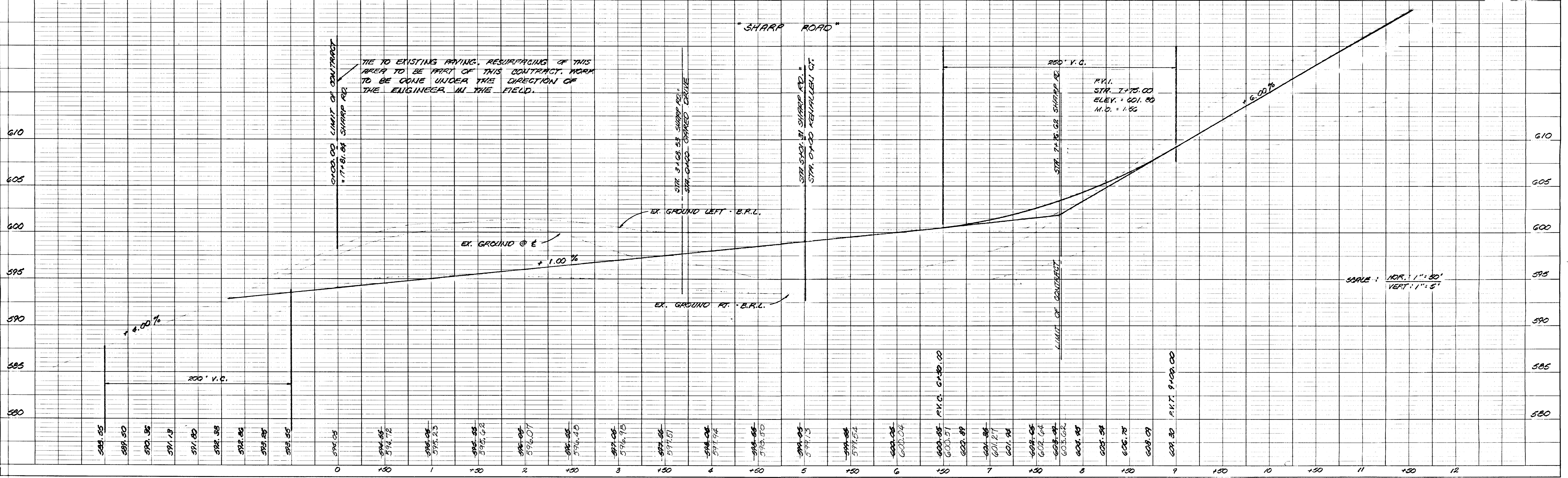


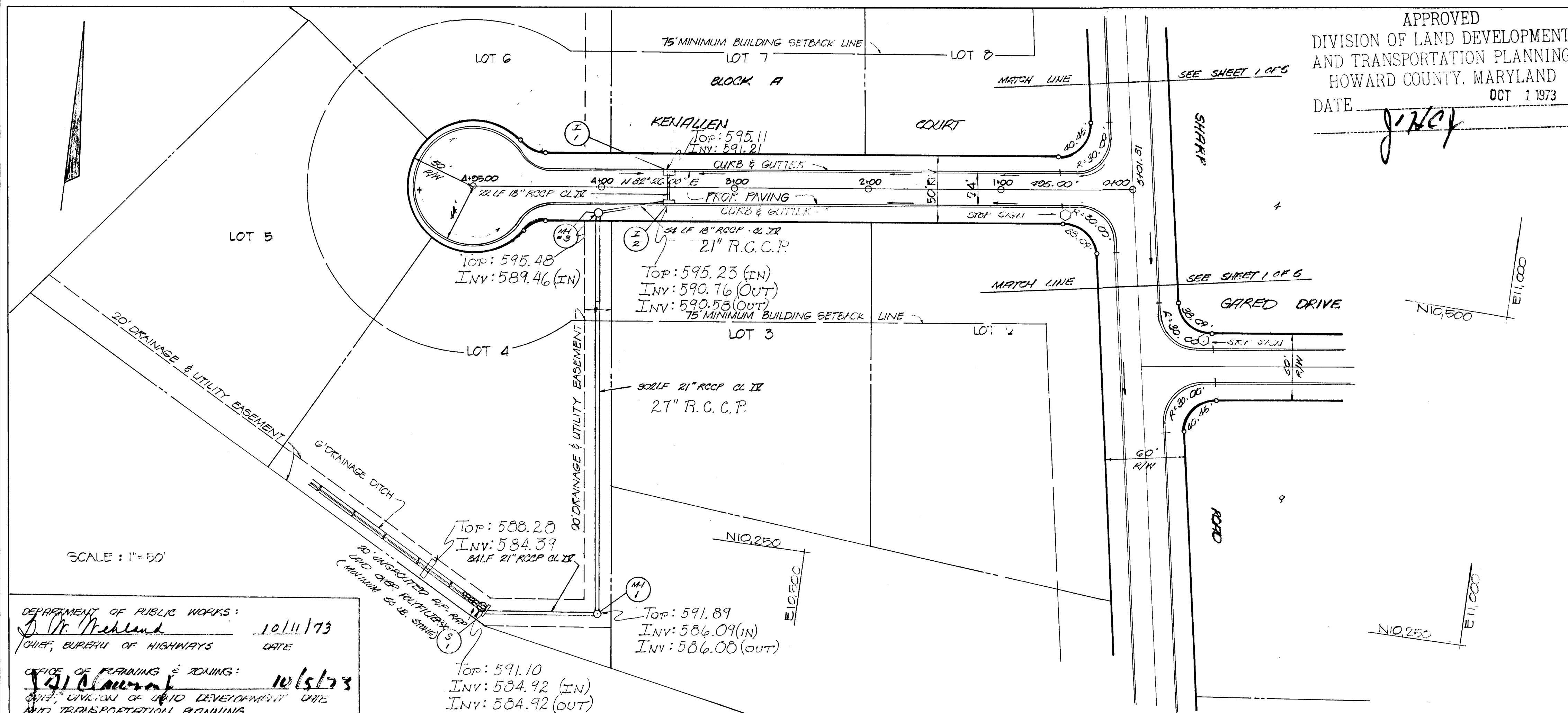
PLATE 1 PLAN-PROFILE O. P., R. & E. STANDARD
 100% RAG PAPER—MADE AND PRINTED IN U.S.A.
 EUGENE DIETZGEN CO.

F-74-22
 P-77-03

As Bourn Oct. 9, 1974

DATE	
BY	
SURVEYED	
PROF. CHECKED	
NOTE BOOK	
NO.	
PLAN	
NOTE BOOK	
NO.	

DATE	
BY	
SURVEYED	
PROF. CHECKED	
NOTE BOOK	
NO.	
PROFILE	
NOTE BOOK	
NO.	



APPROVED
 DIVISION OF LAND DEVELOPMENT
 AND TRANSPORTATION PLANNING
 HOWARD COUNTY, MARYLAND
 DATE JULY OCT 1 1973

		STRUCTURE			SCHEDULE	
NO.	TYPE	INV. IN	INV. OUT	TOP EL.	LOCATION	REMARKS
I-1	HO. CO. STD. DIB. & COMB. INLET		531.0	533.60	AS SHOWN	SEE HO. CO. STD. DETAILS DRWG. D-55 B/124
I-2	HO. CO. STD. 9" COMB. INLET	530.18	530.68	533.60	AS SHOWN	SEE HO. CO. STD. DETAILS DRWG. D-55 B/124
M-1	HO. CO. STD. MANHOLE	538.40	538.30	533.65	AS SHOWN	SEE HO. CO. DETAILS D-103 Pg. 158
S-1	HO. CO. STD. CULVERT	537.80		530.70	AS SHOWN	SEE HO. CO. DETAILS D-52 Pg. 107
M-3	HO. CO. STD. MANHOLE	530.26	530.28	530.10	AS SHOWN	SEE HO. CO. DETAILS DRWG. D-103

DEPARTMENT OF PUBLIC WORKS:
J. W. Medland 10/11/73
 CHIEF, BUREAU OF HIGHWAYS DATE

OFFICE OF PLANNING & ZONING:
J. J. Cloutier 10/15/73
 CHIEF, DIVISION OF LAND DEVELOPMENT AND TRANSPORTATION PLANNING DATE

PLAN & PROFILE OF KENALLEN COURT
GWENLEE ESTATES
 SECTION I

3RD. ELECTION DISTRICT SCALE: AS SHOWN
 HOWARD COUNTY, MARYLAND DATE: JULY, 1973
Philip A. Pozzella 7/17/73
 PHILIP A. POZZELLA REGISTERED SURVEYOR NO. 6923 ASSOCIATE DATE

BOENDER ASSOCIATES, INC.
 Suite 101 Town & Country Prof. Bldg.
 Ellicott City, Maryland 21043
 465-7777

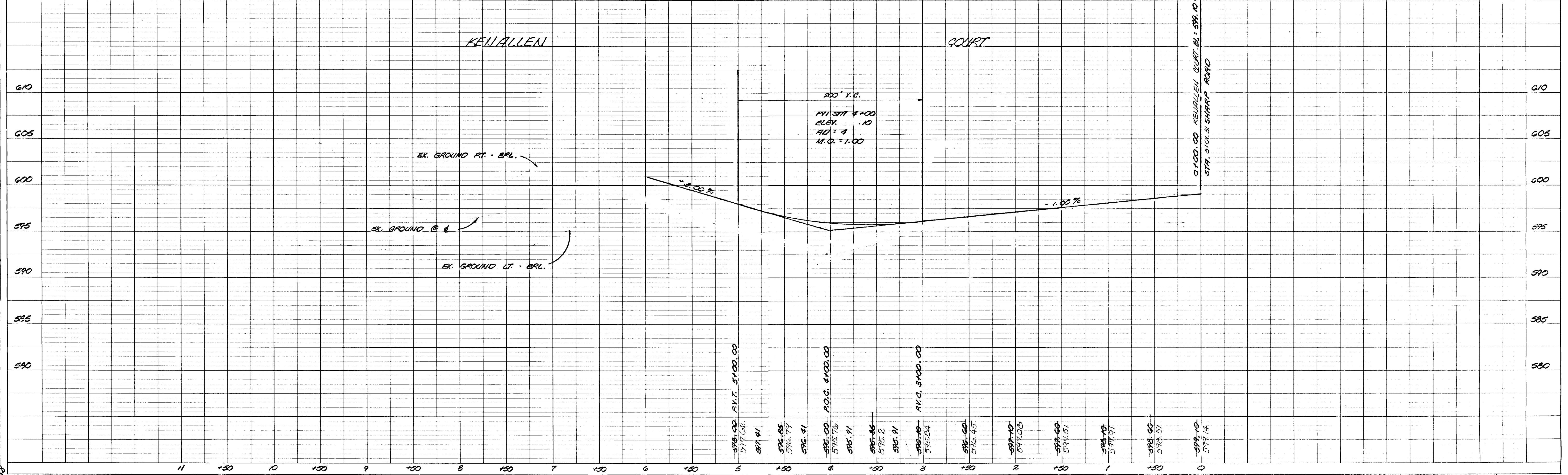


PLATE 1 PLAN-PROFILE OF P. R. & R. E. STANDARD
 100% RAG PAPER - MADE AND PRINTED IN U.S.A.
 EUGENE DIEZGEN CO.

DEPARTMENT OF PUBLIC WORKS
D. M. Melend 10/11/73
 CHIEF, BUREAU OF HIGHWAYS DATE
 OFFICE OF PLANNING & ZONING
J. H. Lawson 10/5/73
 CHIEF, DIVISION OF LAND DEVELOPMENT DATE
 AND TRANSPORTATION PLANNING

APPROVED
 DIVISION OF LAND DEVELOPMENT
 AND TRANSPORTATION PLANNING
 HOWARD COUNTY, MARYLAND
 DATE *J. H. Lawson* OCT 1 1973

BOENDER ASSOCIATES, INC.
 Suite 101 Town & Country Prof. Bldg.
 Ellicott City, Maryland 21043
 465-7777

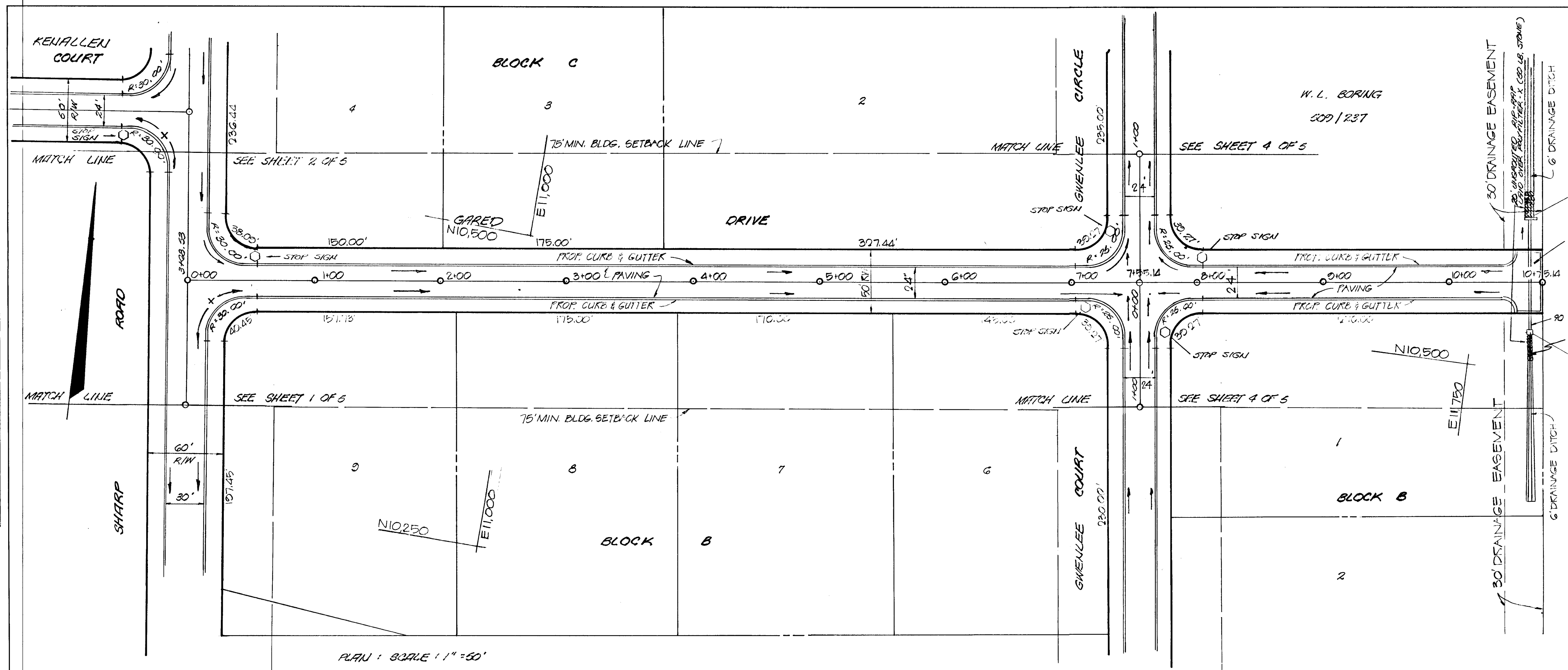


PLAN & PROFILE OF GARED DRIVE
GWENLEE ESTATES
 SECTION I

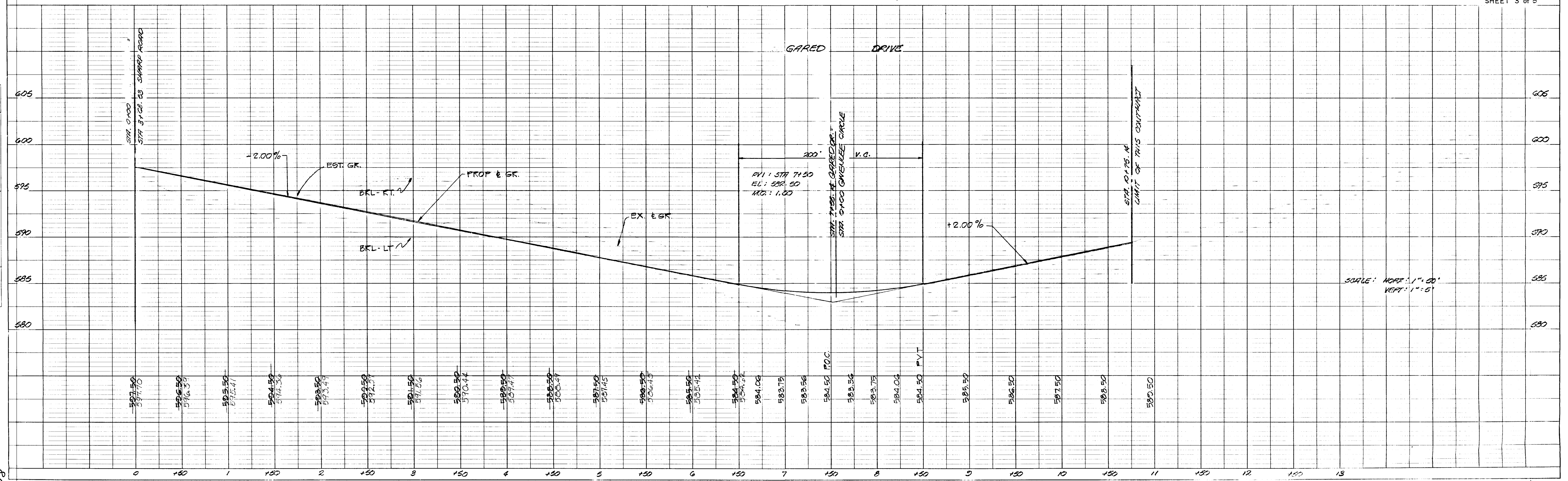
3RD. ELECTION DISTRICT SCALE: AS SHOWN
 HOWARD COUNTY, MARYLAND DATE: JULY, 1973

Philip A. Pezella 3/17/73
 PHILIP A. PEZELLA REGISTERED SURVEYOR NO. 6923 DATE
 ASSOCIATE

SHEET 3 of 5



PLAN: SCALE 1" = 50'



SCALE: HORIZ. 1" = 50'
 VERT. 1" = 5'

F-74-22
 10/1/73

As Issued Oct. 9, 1973

DATE	
BY	
SURVEYED	
PLOTTED	
NOTE BOOK	
NO.	

DATE	
BY	
SURVEYED	
PLOTTED	
NOTE BOOK	
NO.	

153

