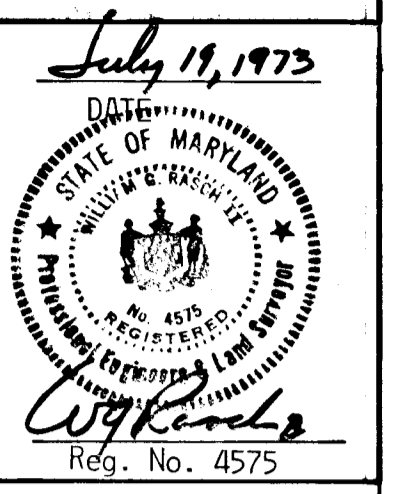
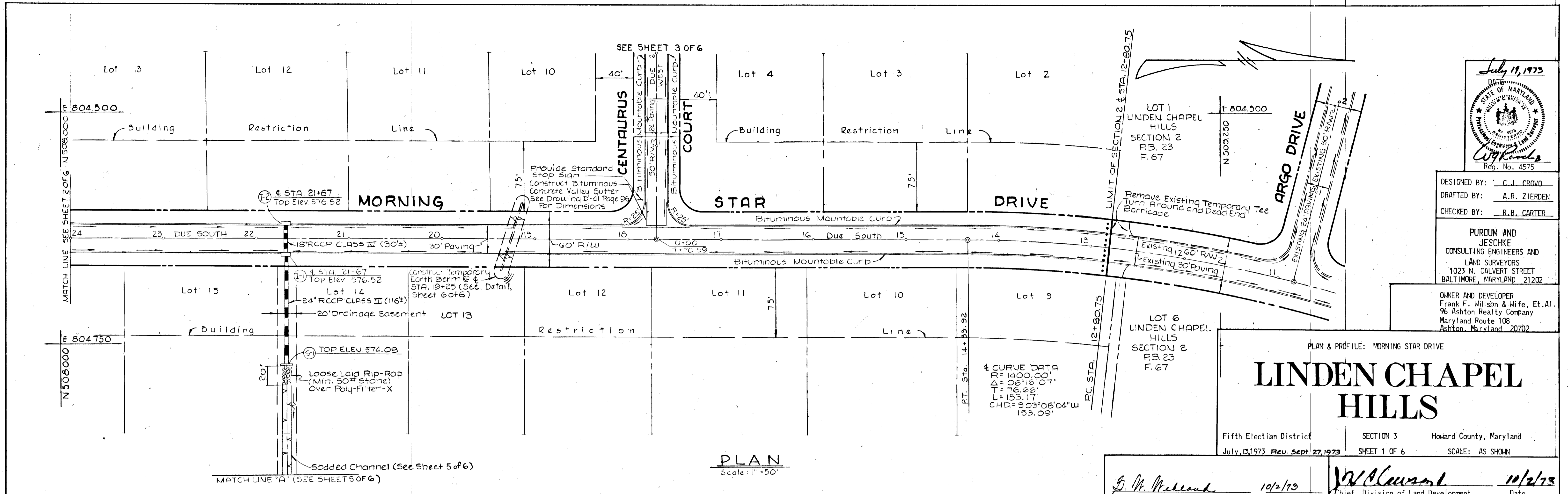


DATE  
BY  
SUPERVISOR  
GRADES CHECKED  
NOTE BOOK  
NO. OF WAY CHECKED

DATE  
BY  
SUPERVISOR  
GRADES CHECKED  
NOTE BOOK  
NO. OF WAY CHECKED



DESIGNED BY: C. J. CROWD  
DRAFTED BY: A. R. ZIERDEN  
CHECKED BY: R. B. CARTER

PURDUM AND JESCHKE  
CONSULTING ENGINEERS AND LAND SURVEYORS  
1023 N. CALVERT STREET  
BALTIMORE, MARYLAND 21202

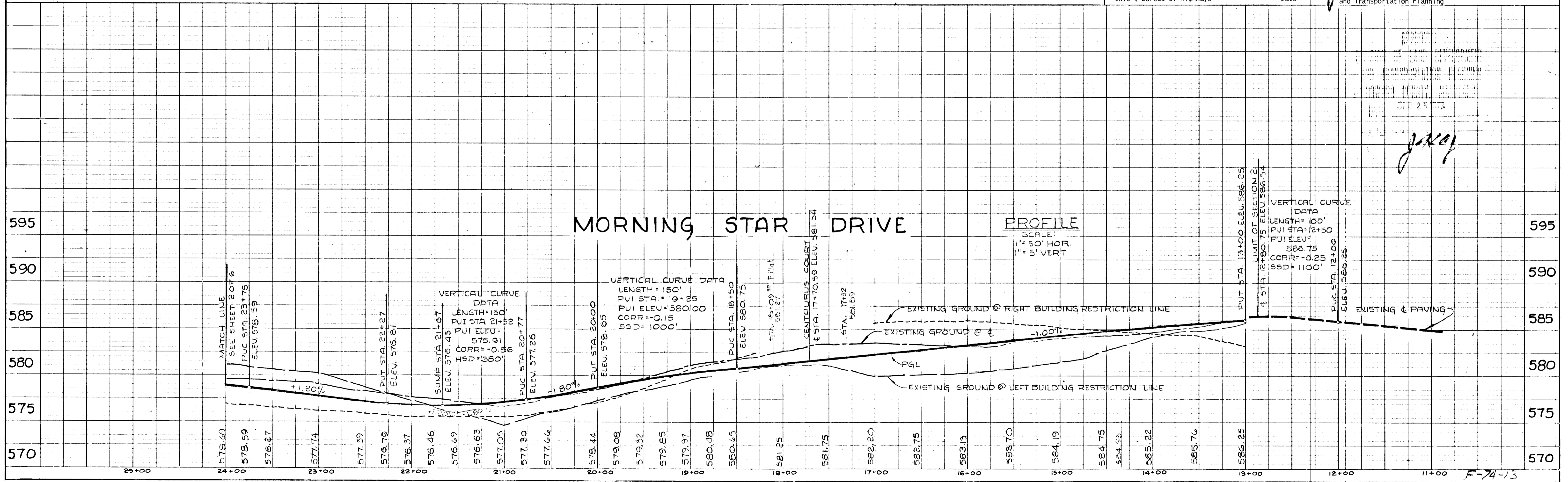
OWNER AND DEVELOPER  
Frank F. Wilson & Wife, Et. Al.  
96 Ashton Realty Company  
Maryland Route 108  
Ashton, Maryland 20702

PLAN & PROFILE: MORNING STAR DRIVE

# LINDEN CHAPEL HILLS

Fifth Election District SECTION 3 Howard County, Maryland  
July 13, 1973 Rev. Sept 27, 1973 SHEET 1 OF 6 SCALE: AS SHOWN

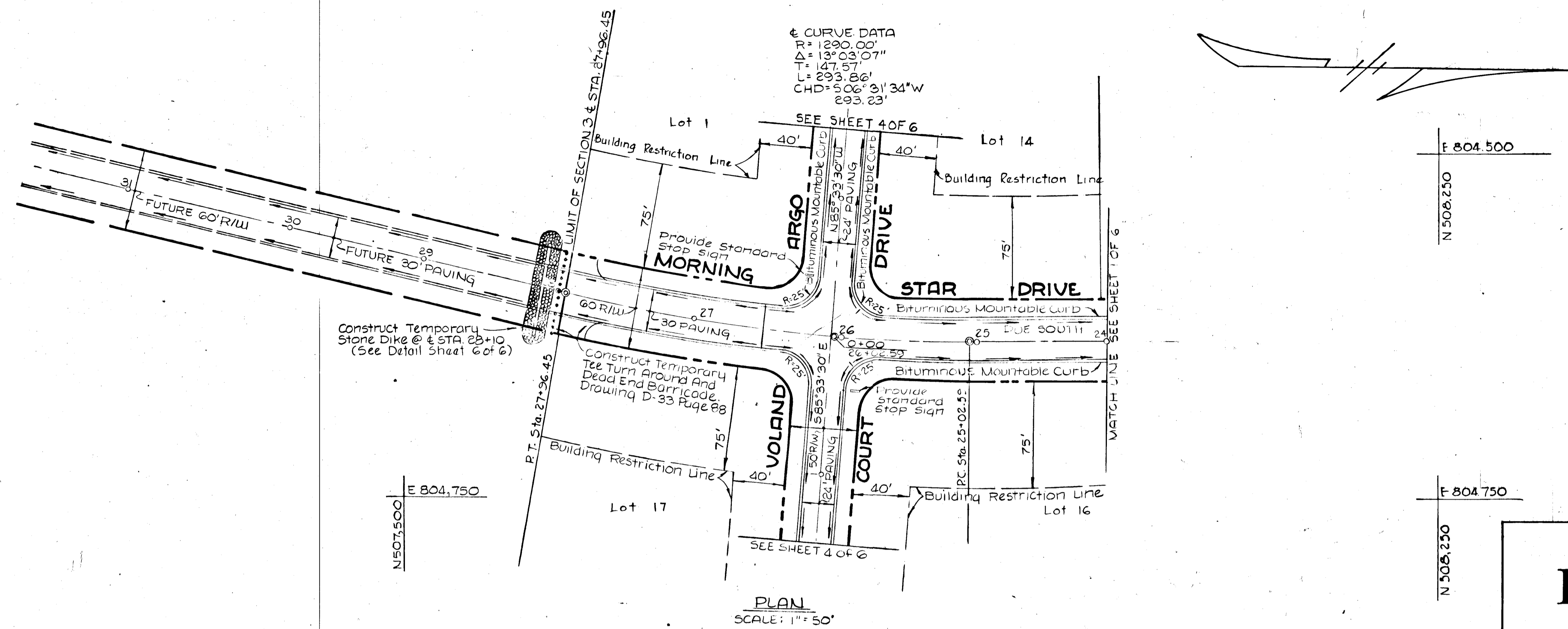
*G. M. McKeand* 10/2/73 Chief, Bureau of Highways Date  
*J. W. Clauson* 10/2/73 Chief, Division of Land Development and Transportation Planning Date



26

PLAN  
 SURVISED  
 PLOTTED  
 NOTE BOOK  
 NO. \_\_\_\_\_

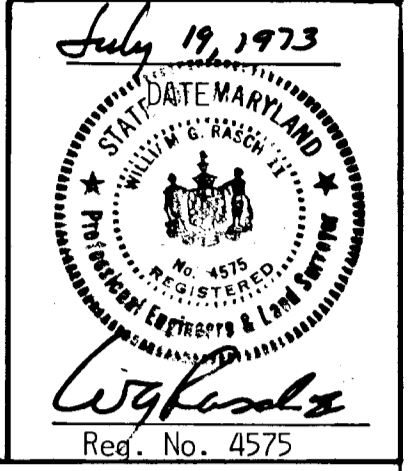
PROFILE  
 SURVISED  
 PLOTTED  
 NOTE BOOK  
 NO. \_\_\_\_\_



PLAN  
 SCALE: 1" = 50'

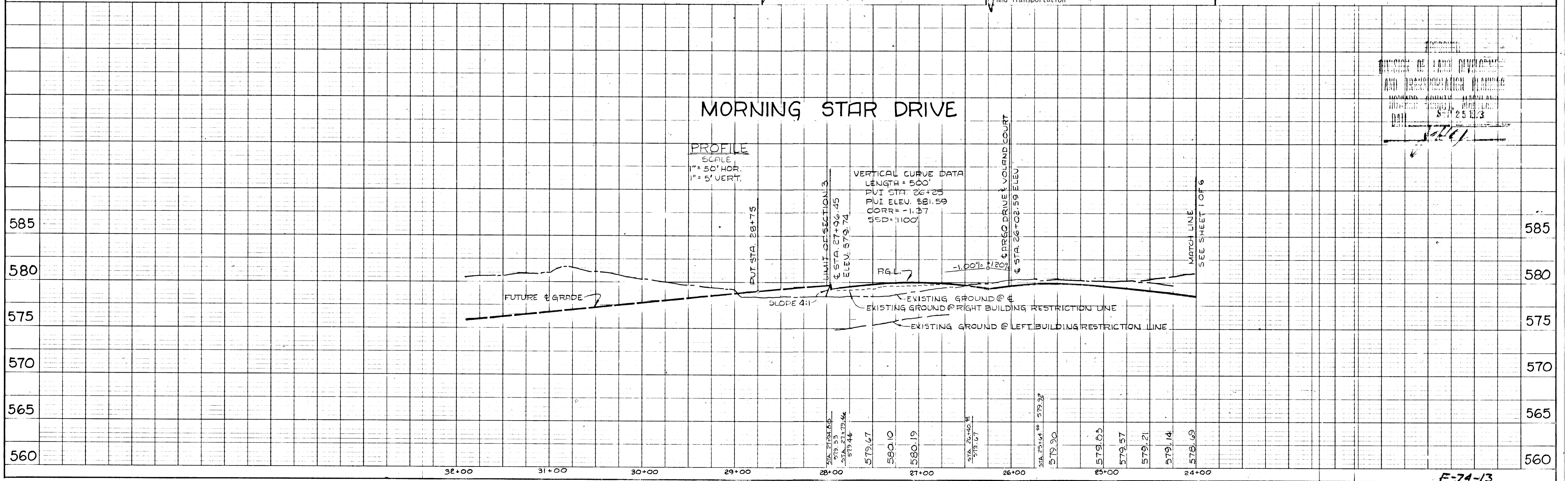
*J. M. McLeod* 10/2/73 Date  
 Chief, Bureau of Highways  
*J. H. Clausen* 10/2/73 Date  
 Chief, Division of Land Development and Transportation

PLAN AND PROFILE: MORNING STAR DRIVE  
**LINDEN CHAPEL HILLS**  
 Fifth Election District SECTION 3  
 July 13, 1973 Rev. Sept. 27, 1973 SHEET 2 OF 6  
 Howard County, Maryland  
 SCALE: AS SHOWN



DESIGNED BY: C. J. CROVO  
 DRAFTED BY: A. R. ZIERDEN  
 CHECKED BY: R. B. CARTER  
 PURDUM AND JESCHKE  
 CONSULTING ENGINEERS AND  
 LAND SURVEYORS  
 1023 NORTH CALVERT STREET  
 BALTIMORE, MARYLAND 21202

OWNER AND DEVELOPER  
 Frank F. Willson & Wife, Et. Al.  
 96 Ashton Realty Company  
 Maryland Route 108  
 Ashton, Maryland 20702



MORNING STAR DRIVE

PROFILE  
 SCALE  
 1" = 50' HOR.  
 1" = 5' VERT.

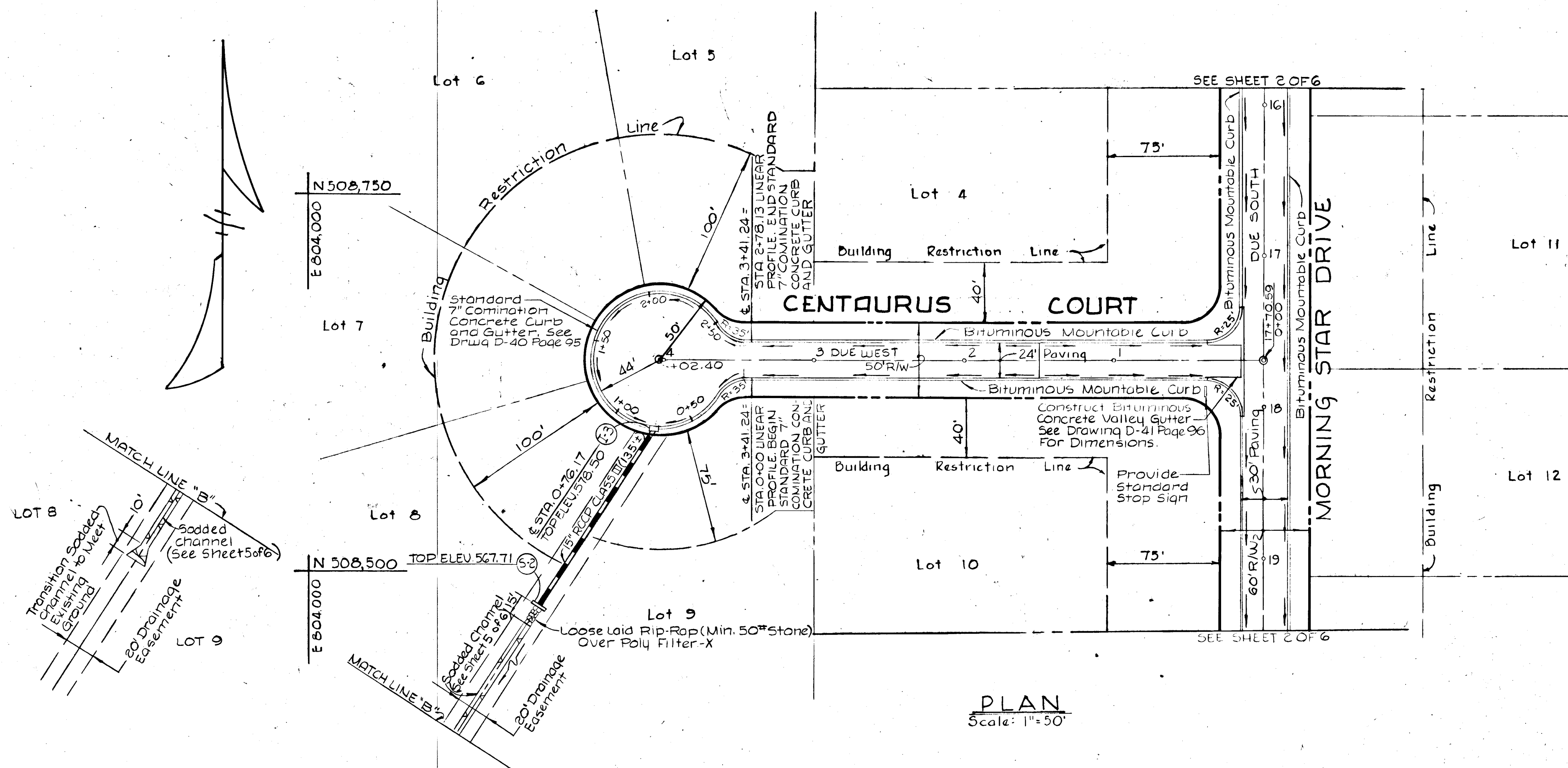
VERTICAL CURVE DATA  
 LENGTH = 500'  
 PVI STA. 26+25  
 PVI ELEV. 581.59  
 CORR = -1.37  
 V.C.D. = 1100'

APPROVED FOR CONSTRUCTION  
 AND RECONSTRUCTION PLANS  
 HOWARD COUNTY, MARYLAND  
 DATE 8-25-73  
*[Signature]*

26

DATE	
BY	
REVISIONS	
NO.	
PLAN	
NO. OF WAY CHECKED	
ALIGNED CHECKED	
NOTE BOOK	

DATE	
BY	
REVISIONS	
NO.	
PROFILE	
GRADE CHECKED	
NOTE BOOK	
STRUCTURE NOTATIONS CHECKED	



PLAN AND PROFILE: MORNING STAR COURT

# LINDEN CHAPEL HILLS

Fifth Election District SECTION 3 Howard County, Maryland  
 July 15, 1973 Rev. Sept. 27, 1973 SHEET 3 OF 6 SCALE: AS SHOWN

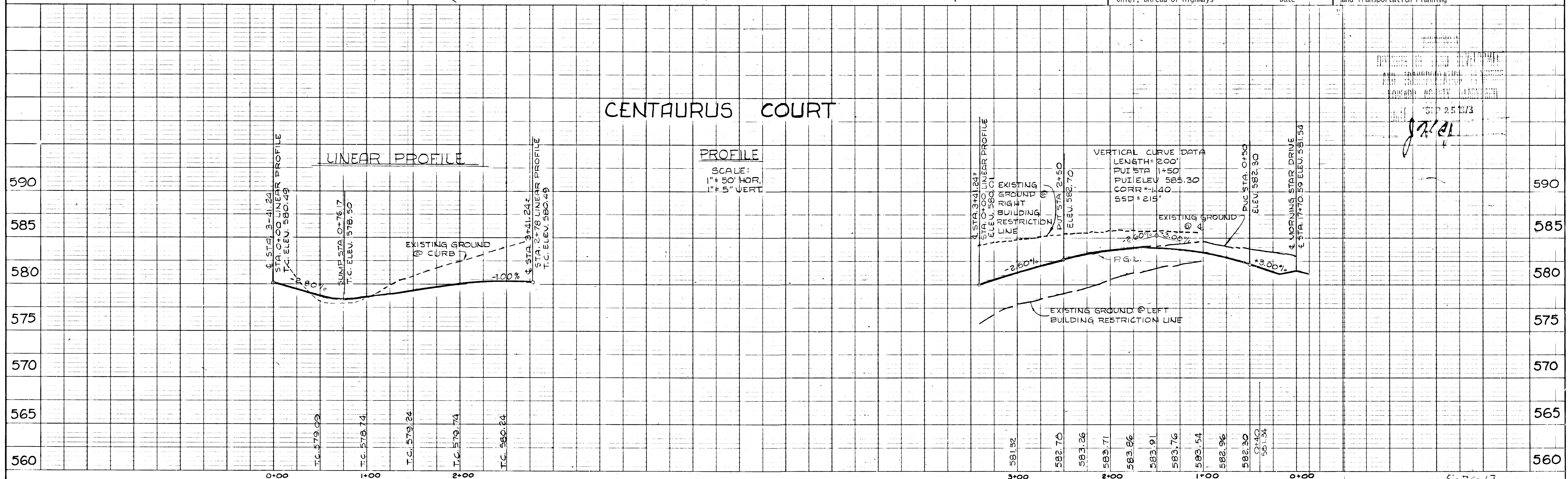
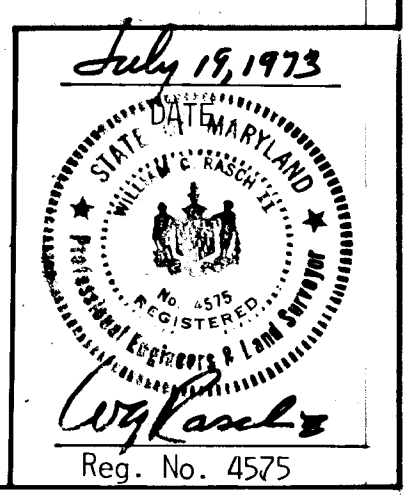
DESIGNED BY: C.J. GROVD  
 DRAFTED BY: A.R. ZIERDEN  
 CHECKED BY: R.B. CARTER

PURDUM AND JESCHKE  
 CONSULTING ENGINEERS AND  
 LAND SURVEYORS  
 1023 NORTH CALVERT STREET  
 BALTIMORE, MARYLAND 21202

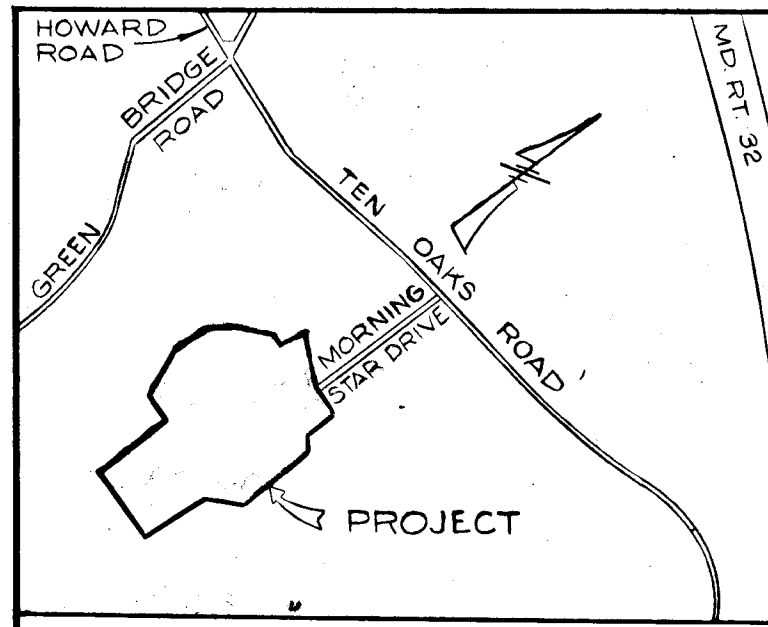
OWNER AND DEVELOPER  
 Frank F. Willson & Wife, Et. Al.  
 96 Ashton Realty Company  
 Maryland Route 108  
 Ashton, Maryland 20702

*J. A. McLeod* 10/2/73  
 Chief, Bureau of Highways Date

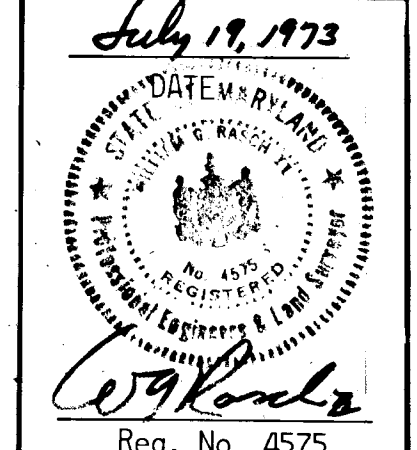
*V. K. Clawson* 10/2/73  
 Chief, Division of Land Development and Transportation Planning Date



26



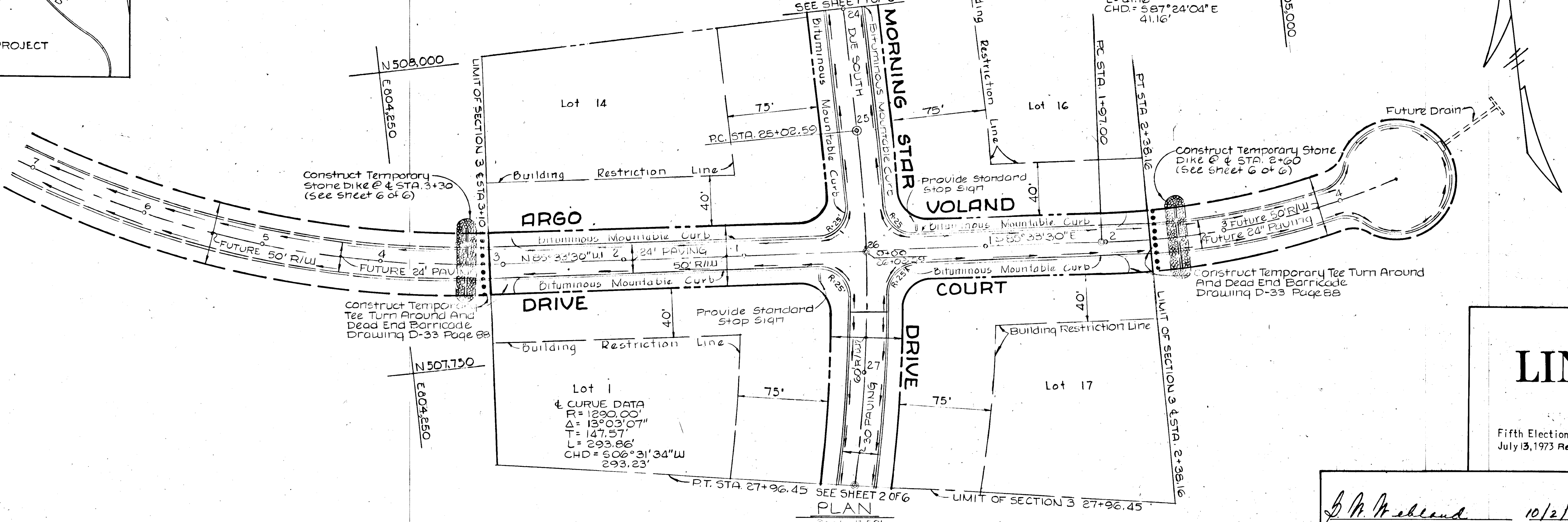
DATE	
BY	
NO.	
REVISIONS	
1. DATE	
2. BY	
3. NO.	
4. DESCRIPTION	
5. DATE	
6. BY	
7. NO.	
8. DESCRIPTION	
9. DATE	
10. BY	
11. NO.	
12. DESCRIPTION	
13. DATE	
14. BY	
15. NO.	
16. DESCRIPTION	
17. DATE	
18. BY	
19. NO.	
20. DESCRIPTION	
21. DATE	
22. BY	
23. NO.	
24. DESCRIPTION	
25. DATE	
26. BY	
27. NO.	
28. DESCRIPTION	
29. DATE	
30. BY	
31. NO.	
32. DESCRIPTION	
33. DATE	
34. BY	
35. NO.	
36. DESCRIPTION	
37. DATE	
38. BY	
39. NO.	
40. DESCRIPTION	
41. DATE	
42. BY	
43. NO.	
44. DESCRIPTION	
45. DATE	
46. BY	
47. NO.	
48. DESCRIPTION	
49. DATE	
50. BY	
51. NO.	
52. DESCRIPTION	
53. DATE	
54. BY	
55. NO.	
56. DESCRIPTION	
57. DATE	
58. BY	
59. NO.	
60. DESCRIPTION	
61. DATE	
62. BY	
63. NO.	
64. DESCRIPTION	
65. DATE	
66. BY	
67. NO.	
68. DESCRIPTION	
69. DATE	
70. BY	
71. NO.	
72. DESCRIPTION	
73. DATE	
74. BY	
75. NO.	
76. DESCRIPTION	
77. DATE	
78. BY	
79. NO.	
80. DESCRIPTION	
81. DATE	
82. BY	
83. NO.	
84. DESCRIPTION	
85. DATE	
86. BY	
87. NO.	
88. DESCRIPTION	
89. DATE	
90. BY	
91. NO.	
92. DESCRIPTION	
93. DATE	
94. BY	
95. NO.	
96. DESCRIPTION	
97. DATE	
98. BY	
99. NO.	
100. DESCRIPTION	



DESIGNED BY: C.J. CROVO  
 DRAFTED BY: A.R. ZIERDEN  
 CHECKED BY: R.B. CARTER

PURDUM AND JESCHKE  
 CONSULTING ENGINEERS AND  
 LAND SURVEYORS  
 1023 NORTH CALVERT STREET  
 BALTIMORE, MARYLAND 21202

OWNER AND DEVELOPER  
 Frank F. Wilson & Wife, Et. Al.  
 96 Ashton Realty Company  
 Maryland Route 108  
 Ashton, Maryland 20702

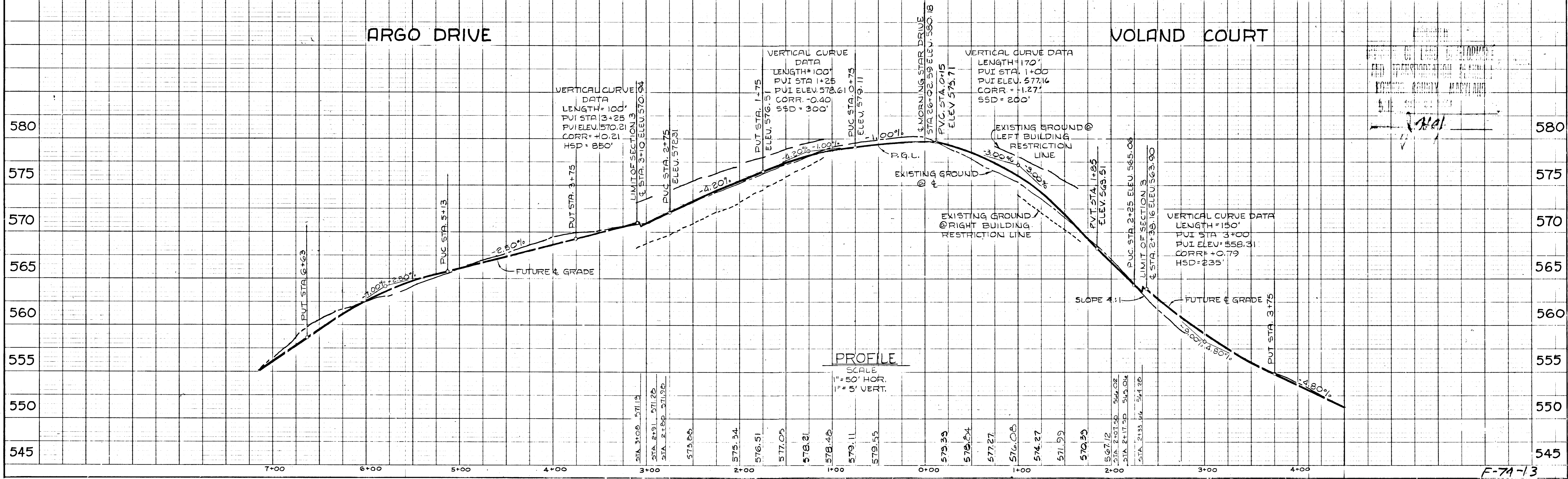


PLAN AND PROFILE: ARGO DRIVE AND ARGO COURT  
**LINDEN CHAPEL HILLS**  
 Fifth Election District SECTION 3  
 July 13, 1973 Rev. Sept. 27, 1973 SHEET 4 OF 6  
 Howard County, Maryland  
 SCALE: AS SHOWN

*B. M. McLeod* 10/2/73  
 Chief, Bureau of Highways Date

*J. H. Clouston* 10/2/73  
 Chief, Division of Land Development and Transportation Planning Date

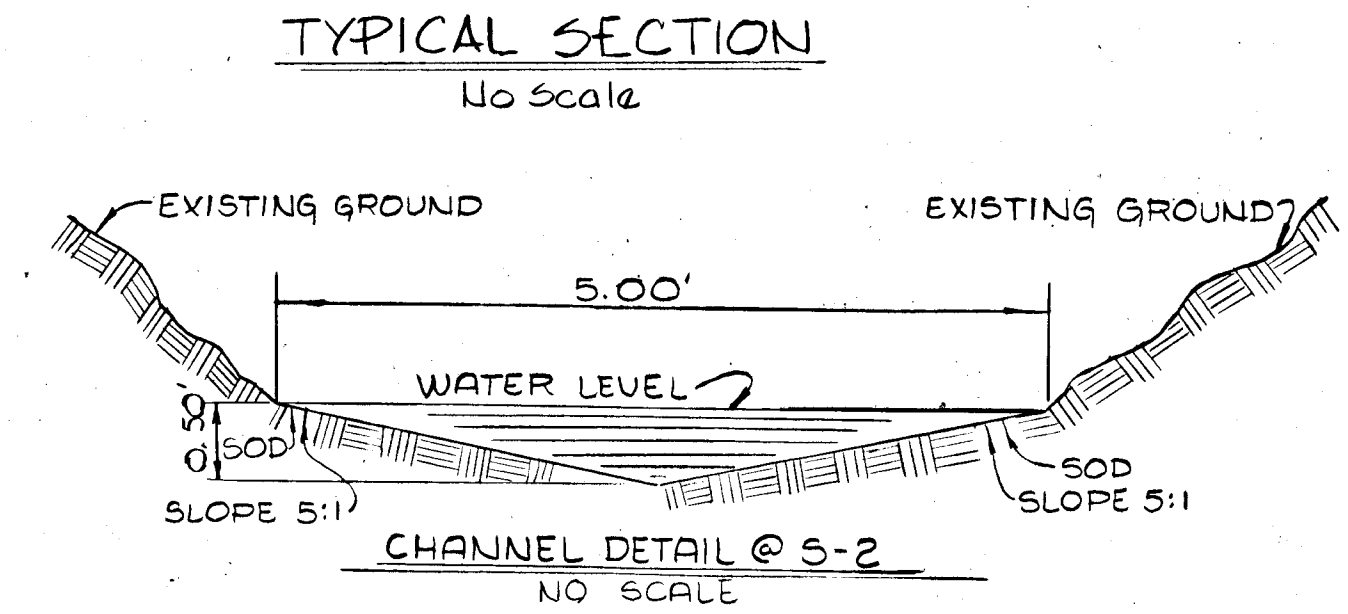
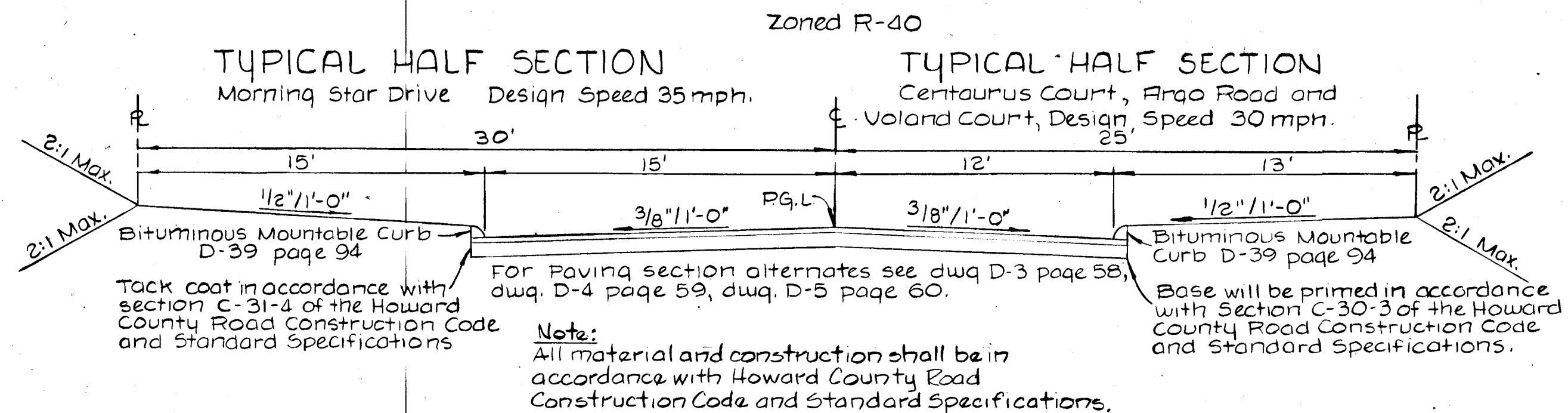
DATE	
BY	
NO.	
REVISIONS	
1. DATE	
2. BY	
3. NO.	
4. DESCRIPTION	
5. DATE	
6. BY	
7. NO.	
8. DESCRIPTION	
9. DATE	
10. BY	
11. NO.	
12. DESCRIPTION	
13. DATE	
14. BY	
15. NO.	
16. DESCRIPTION	
17. DATE	
18. BY	
19. NO.	
20. DESCRIPTION	
21. DATE	
22. BY	
23. NO.	
24. DESCRIPTION	
25. DATE	
26. BY	
27. NO.	
28. DESCRIPTION	
29. DATE	
30. BY	
31. NO.	
32. DESCRIPTION	
33. DATE	
34. BY	
35. NO.	
36. DESCRIPTION	
37. DATE	
38. BY	
39. NO.	
40. DESCRIPTION	
41. DATE	
42. BY	
43. NO.	
44. DESCRIPTION	
45. DATE	
46. BY	
47. NO.	
48. DESCRIPTION	
49. DATE	
50. BY	
51. NO.	
52. DESCRIPTION	
53. DATE	
54. BY	
55. NO.	
56. DESCRIPTION	
57. DATE	
58. BY	
59. NO.	
60. DESCRIPTION	
61. DATE	
62. BY	
63. NO.	
64. DESCRIPTION	
65. DATE	
66. BY	
67. NO.	
68. DESCRIPTION	
69. DATE	
70. BY	
71. NO.	
72. DESCRIPTION	
73. DATE	
74. BY	
75. NO.	
76. DESCRIPTION	
77. DATE	
78. BY	
79. NO.	
80. DESCRIPTION	
81. DATE	
82. BY	
83. NO.	
84. DESCRIPTION	
85. DATE	
86. BY	
87. NO.	
88. DESCRIPTION	
89. DATE	
90. BY	
91. NO.	
92. DESCRIPTION	
93. DATE	
94. BY	
95. NO.	
96. DESCRIPTION	
97. DATE	
98. BY	
99. NO.	
100. DESCRIPTION	



26

DATE	
BY	
REVISIONS	
NO.	
DATE	
BY	
REVISIONS	
NO.	
DATE	
BY	
REVISIONS	
NO.	

DATE	
BY	
REVISIONS	
NO.	
DATE	
BY	
REVISIONS	
NO.	
DATE	
BY	
REVISIONS	
NO.	



**CHANNEL DESIGN DATA**

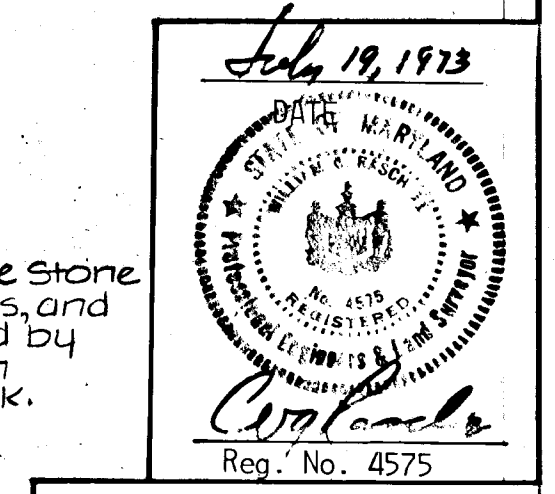
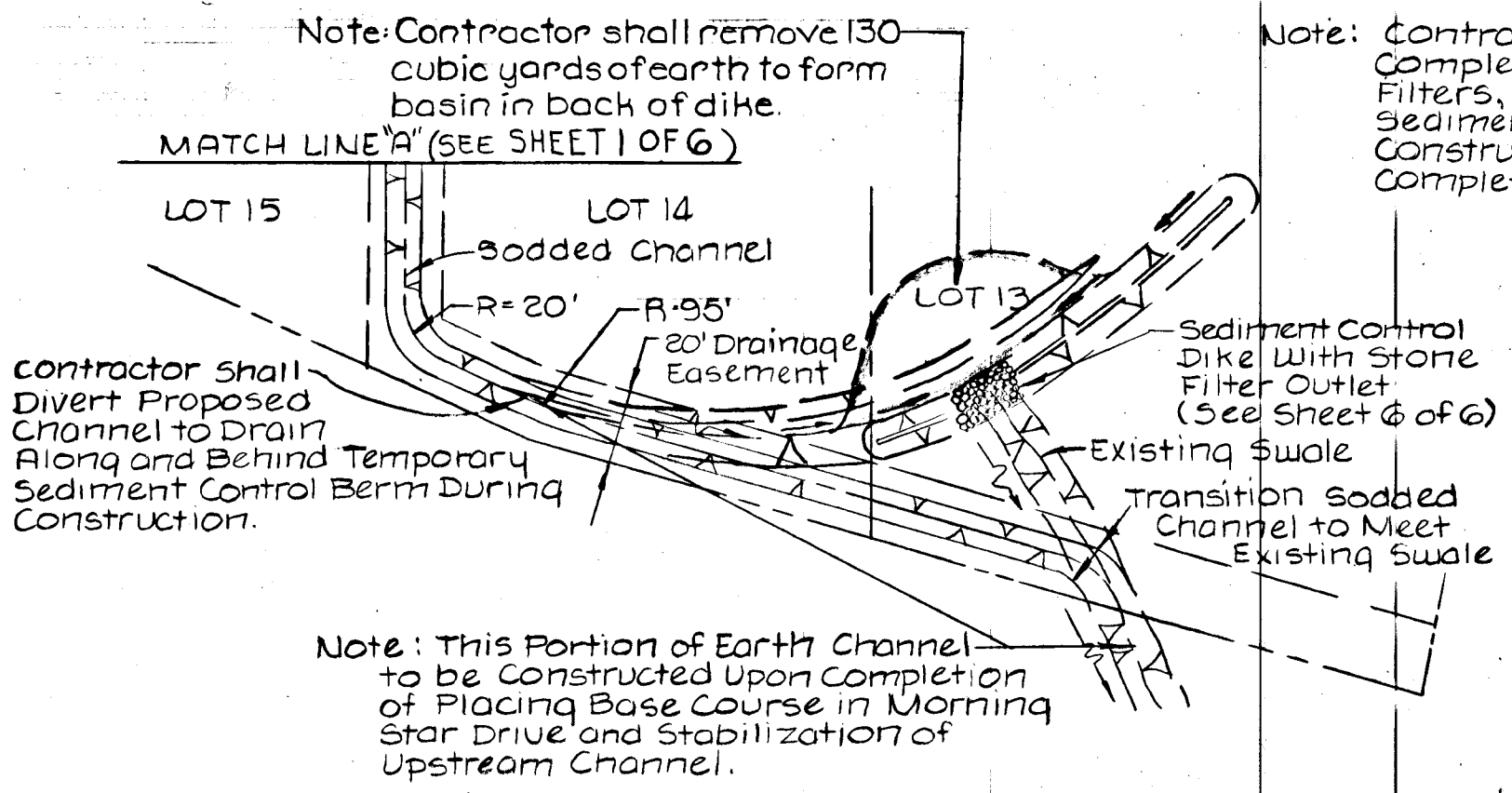
A=3.61' n=0.03  
 P=8.66' S=2.80%  
 R=0.42 S 1/2=0.1673  
 R 2/3=0.561 WATER LEVEL=0.85'  
 V=1.485/n x R 2/3 x S 1/2  
 V=49.50 x 0.561 x 0.1673  
 V=4.3 fps  
 Q=A x V  
 Q=3.61 x 4.3  
 Q=15.6 cfs

**CHANNEL DESIGN DATA**

A=125.0' n=0.03  
 P=5.10' S=3.90%  
 R=0.25 S 1/2=0.1975  
 R 2/3=0.397 WATER LEVEL=0.50'  
 V=1.485/n x R 2/3 x S 1/2  
 V=49.50 x 0.397 x 0.1975  
 V=3.9 fps  
 Q=A x V  
 Q=1.25 x 3.9  
 Q=4.9 cfs

**STRUCTURE SCHEDULE**

STRUCTURE	TYPE	INV. IN	INV. OUT	TOP ELEV.	STD. DETAIL
I-1	A-10	572.53	572.03	576.52	P119-A Dwg. 64-A
I-2	A-10			576.52	P119-A Dwg. 64-A
I-3	A-3			574.75	P119-A Dwg. 64-A
S-1	"C"			571.33	P107 Dwg. D-52
S-2	"C"			565.71	P107 Dwg. D-52



DESIGNED BY: C. J. GROVO  
 DRAFTED BY: A. R. ZIERDEN  
 CHECKED BY: R. B. CARTER

PURDUM AND JESCHKE  
 CONSULTING ENGINEERS AND  
 LAND SURVEYORS  
 1023 NORTH CALVERT STREET  
 BALTIMORE, MARYLAND 21202

OWNER AND DEVELOPER  
 Frank F. Wilson & Wife, Et. Al.  
 96 Ashton Realty Company  
 Maryland Route 108  
 Ashton, Maryland 20702

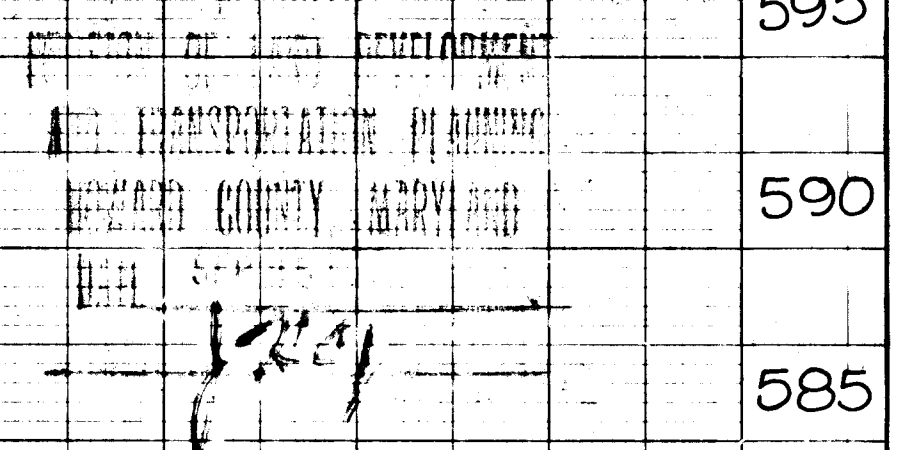
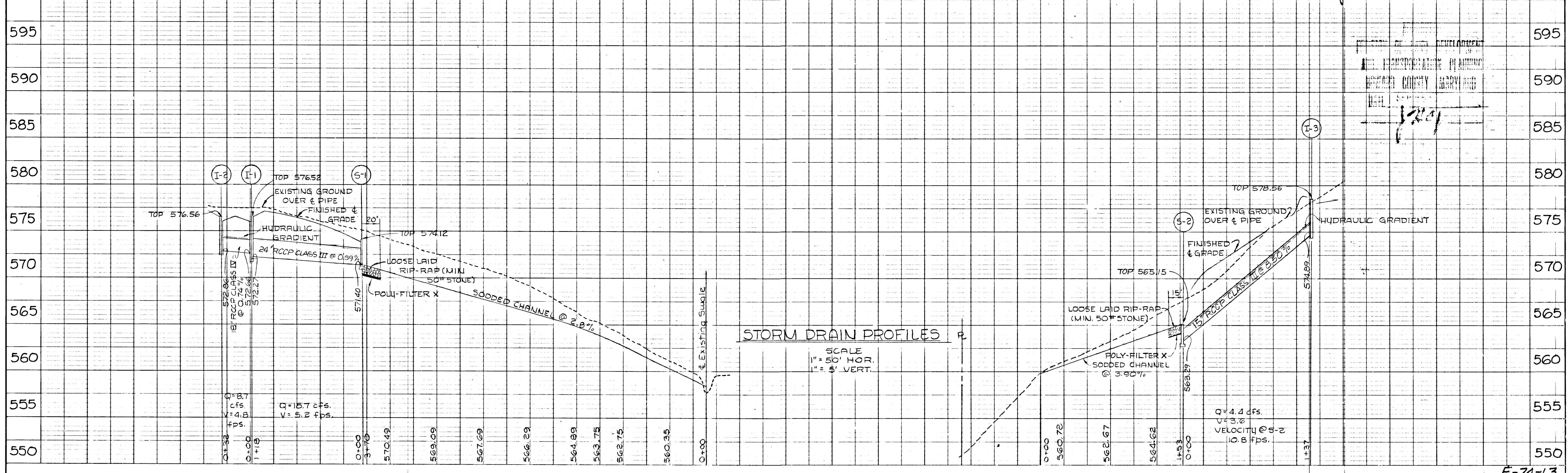
STORM DRAIN PROFILES AND DETAILS

# LINDEN CHAPEL HILLS

Fifth Election District SECTION 3 Howard County, Maryland  
 July 13, 1973 Rev. Sept. 27, 1973 SHEET 5 OF 6 SCALE: AS SHOWN

*J. A. McKeown* 10/2/73  
 Chief: Bureau of Highways Date

*H. A. Courmont* 11/2/73  
 Chief: Division of Land Development and Transportation Planning Date



26

F-74-13

DATE  
BY  
PLAN  
SURVEYED  
PLOTTED  
NOTE BOOK  
ALIGNED CHECKED  
No.

**DEVELOPER'S CERTIFICATE**

I certify that all development and/or construction will be done according to this plan of development and plan for Erosion and Sediment Control, and I also authorize periodic on-site inspection by the Howard Soil Conservation District or their authorized agents, as are deemed necessary. Deviation from this plan will not be made unless authorized by the Howard Soil Conservation District.

*Robert Johnson* 7/17/73  
Date

**ENGINEER'S CERTIFICATE**

I certify that this plan for Erosion and Sediment Control represents a practical and workable plan based on my personal knowledge of the site conditions and that it was prepared in accordance with the requirements of the Howard Soil Conservation District.

*William Standa* 7/19/73  
Signature of Engineer Date

Reviewed for Howard County Soil Conservation District and meets Technical Requirements.

*Charles E. Nulle* 10/2/73  
U.S. Soil Conservation Service Date

This development plan is approved for Soil Erosion and Sediment Control by the Howard Soil Conservation District.

APPROVED: *Robert W. Zuehl* 10/2/73  
District Coordinator Date  
Howard Soil Conservation District

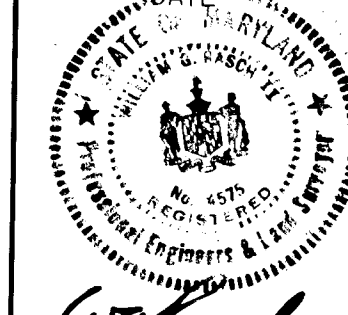
**SEDIMENT CONTROL NOTES**

- The developer shall notify the Howard County Soil Conservation District at least 24 hours prior to beginning any construction shown hereon (465-3180).
- Berms, sediment traps, etc., to be constructed prior to any onsite grading or disturbance to any existing surface material, and are to be stabilized as soon as constructed.
- All sediment control structures to remain in place until permission for their removal has been obtained from the Howard Soil Conservation District. (465-3180 or 465-5000 Ext. 291).
- All graded areas not to be sodded shall be stabilized by seeding and mulching in accordance with the following:
  - Site preparation:
    - Harrow or disc in areas proposed to be seeded the following materials at the specified rate, to a depth of 3".
      - Pulverized limestone at 1 1/2 tons/acre.
      - Commercial fertilizer 5-10-10 at 3/4 tons/acre.
      - Super phosphate at 600 lbs/acre.
  - Seeding:
    - Sow the following seed mixture at the rate of 200 lbs/acre with a mechanical spreader.
      - 20% Annual Rye Grass
      - 80% Kentucky 31 Fescue
    - The seeded area shall then be raked with a York Rake (minimum of 2 passes), covered and compacted with Cultipacker or other approved method.
  - Mulching:
    - Seeded areas shall be uniformly mulched immediately after seeding with unweathered small grain straw at the rate of 1 1/2 to 2 tons/acre
    - Tie mulch down with liquid asphalt at 0.1 gal/s.y. or emulsified asphalt at 0.04 gal/s.y.

**GENERAL NOTES**

- All construction shown hereon shall be in accordance with the Howard County Road Construction Code and Standard Specifications dated November 27, 1962 and revised August, 1967.
- Reference to page and drawing numbers shown hereon and referred to the above mentioned Road Construction Code and Standard Specifications.

July 19, 1973



*W. Standa*  
Reg. No. 4575

DESIGNED BY: C.J. CROVO  
DRAFTED BY: A.R. ZIERDEN  
CHECKED BY: R.B. CARTER

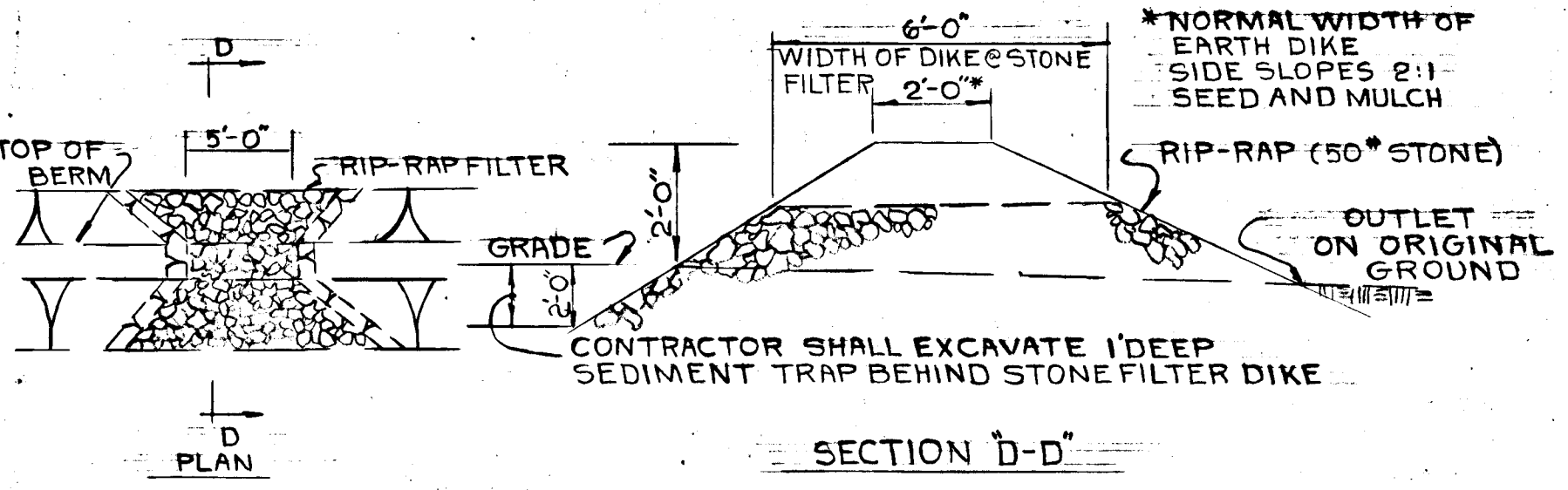
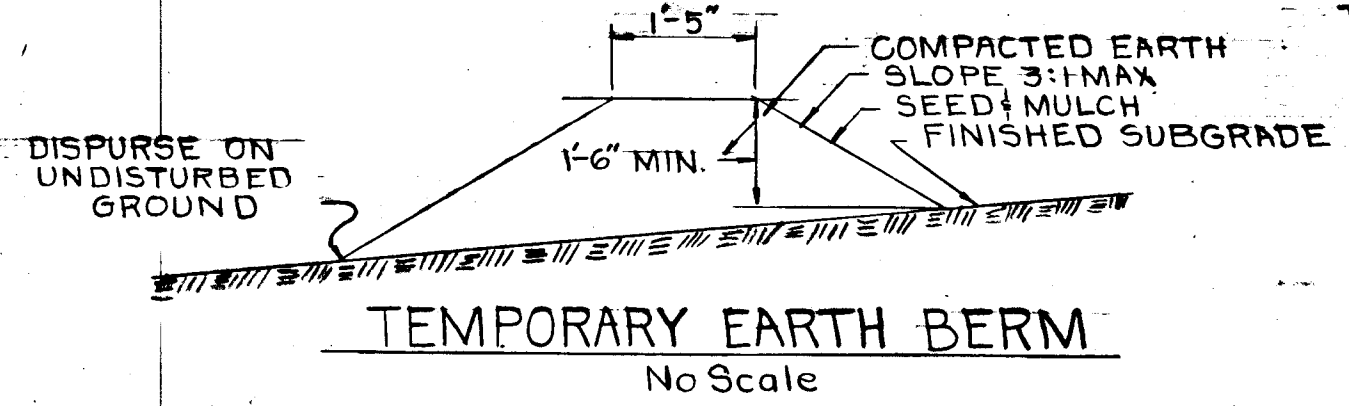
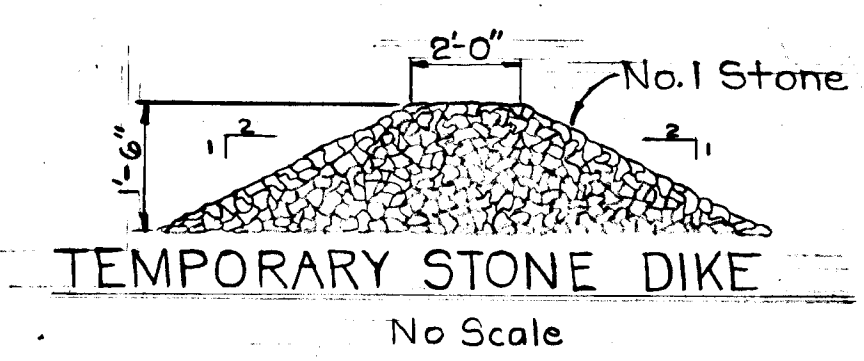
PURDUM AND JESCHKE  
CONSULTING ENGINEERS AND  
LAND SURVEYORS  
1023 N. CALVERT STREET  
BALTIMORE, MARYLAND 21202

OWNER AND DEVELOPER  
Frank F. Wilson & Wife, Et. Al.  
96 Ashton Realty Company  
Maryland Route 108  
Ashton, Maryland 20702

**SEDIMENT CONTROL DETAILS**

**LINDEN CHAPEL HILLS**

Fifth Election District SECTION 3 Howard County, Maryland  
July 13, 1973 Rev. Sept. 27, 1973 SHEET 6 OF 6 Scale: AS SHOWN



**SEDIMENT CONTROL DIKE WITH STONE FILTER OUTLET**

*J. A. Hodland* 10/2/73  
Chief, Bureau of Highways Date

*W. L. Clow* 10/2/73  
Chief, Division of Land Development and Transportation Planning Date

APPROVED FOR CONSTRUCTION  
BY THE HOWARD COUNTY PLANNING  
AND ZONING DEPARTMENT  
DATE: OCT 25 1973  
*J. W. ...*

DATE  
BY  
PROFILE  
SURVEYED  
PLOTTED  
NOTE BOOK  
GRADE CHECKED  
STRUCTURE NOTATIONS CHECKED  
No.