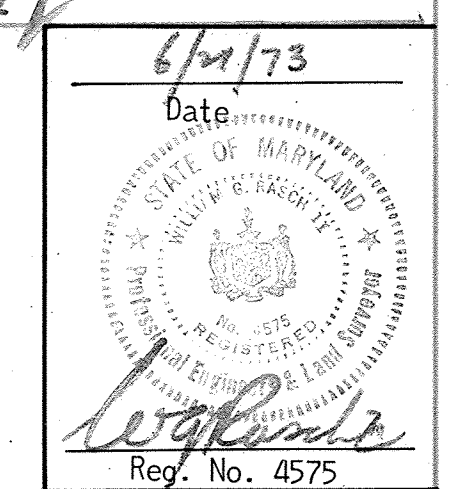


ON OR ABOUT 11/1/2020, CAPITAL PROJECT P-418, TITLED GWYNN PARK DRIVE OUTFALL STABILIZATION PROJECT, WAS CREATED TO GRADE AND STABILIZE THE EXISTING STREAM BANK ALONG A LITTLE PATUXENT RIVER TRIBUTARY LOCATED WITHIN THE LIMITS OF THIS PLAN. AN ALTERNATIVE COMPLIANCE WAS PROCESSED THROUGH THE DEPARTMENT OF PLANNING AND ZONING UNDER WF-20-037, APPROVED ON 11/18/2019, TO WAIVER SECTION 16-153(a)(1)(i), SECTION 16-154(a)(2), AND SECTION 16-155(a)(2)(i) OF THE SUBDIVISION AND LAND DEVELOPMENT REGULATIONS SUBJECT TO SIX APPROVAL CONDITIONS. FOR THE DETAILED CONDITIONS OF APPROVAL AND THE CURRENT SITE CONDITIONS WITHIN THE DISTURBED AREA, PLEASE SEE THE CAPITAL PROJECT PLANS.

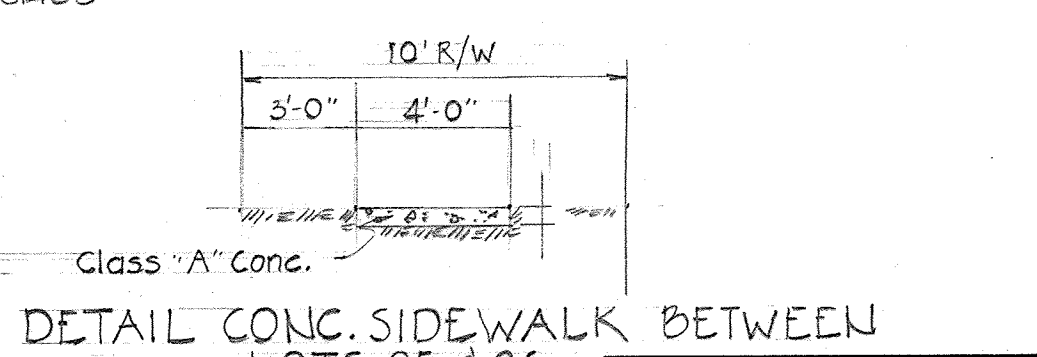
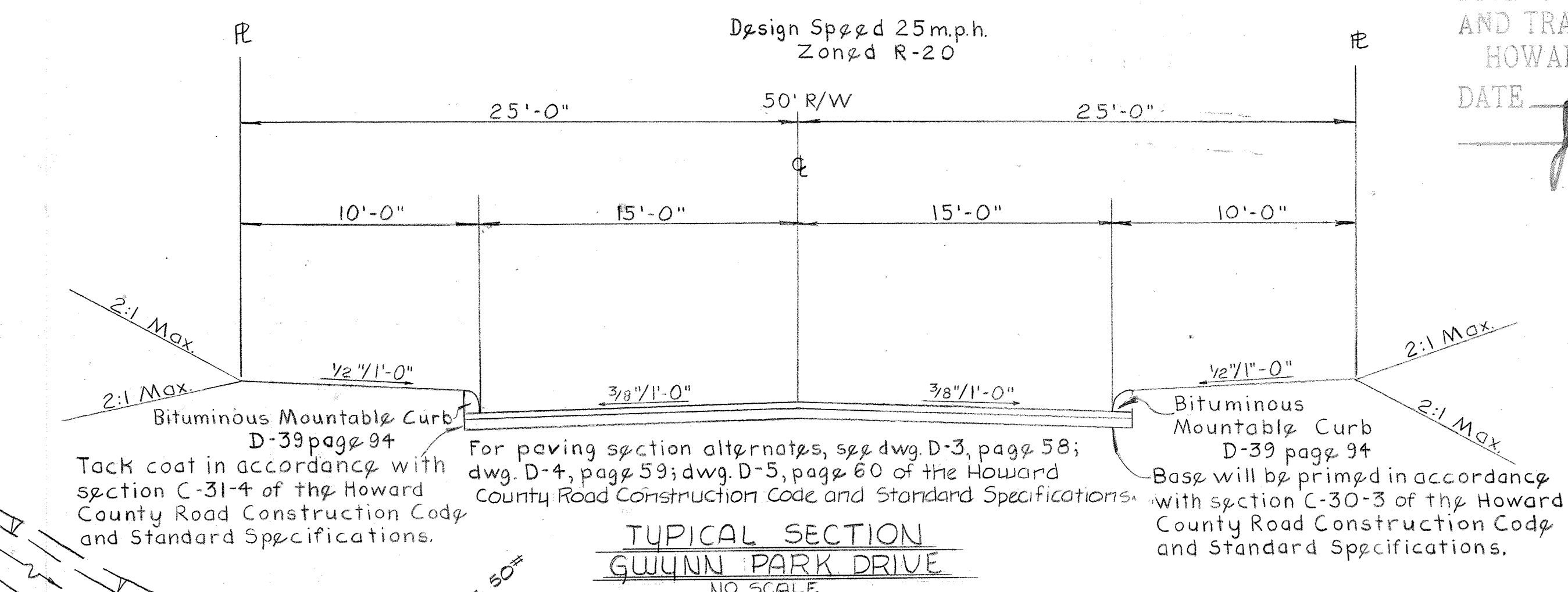
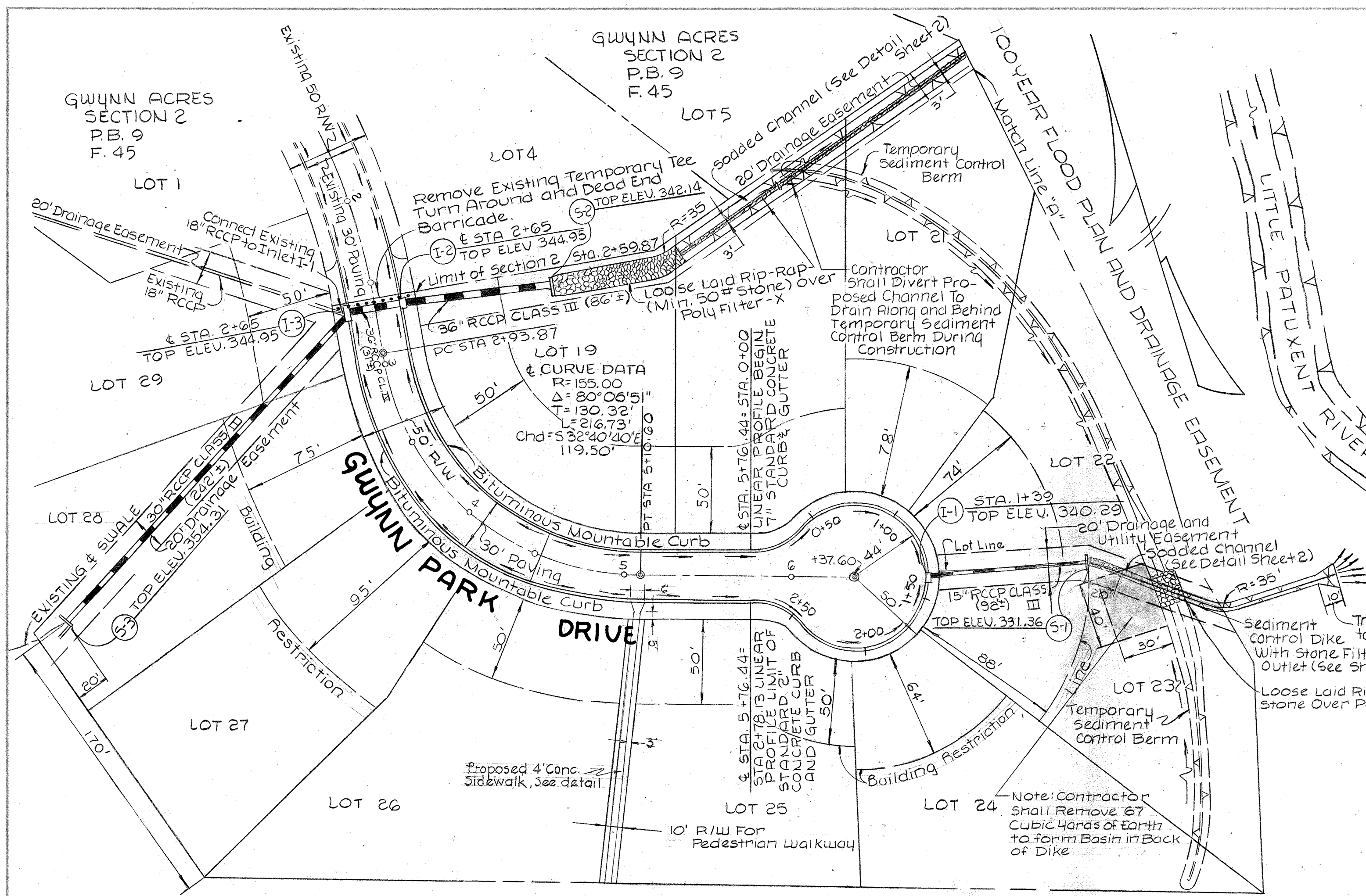
APPROVED  
DIVISION OF LAND DEVELOPMENT  
AND TRANSPORTATION PLANNING  
HOWARD COUNTY, MARYLAND  
DATE Aug 20 1973



DATE 6/1/73  
DRAWN BY: A.R. Zierden  
DESIGNED BY: C.J. Crovo  
CHECKED BY: R.B. Carter

PURDUM AND JESCHKE  
CONSULTING ENGINEERS AND  
LAND SURVEYORS  
1023 N. CALVERT STREET  
BALTIMORE, MARYLAND 21202

OWNER AND DEVELOPER  
THE DEVELOPMENT AND INVESTMENT  
CORPORATION OF MARYLAND  
9998 OLD ANNAPOLIS ROAD  
ELLICOTT CITY, MARYLAND 21043

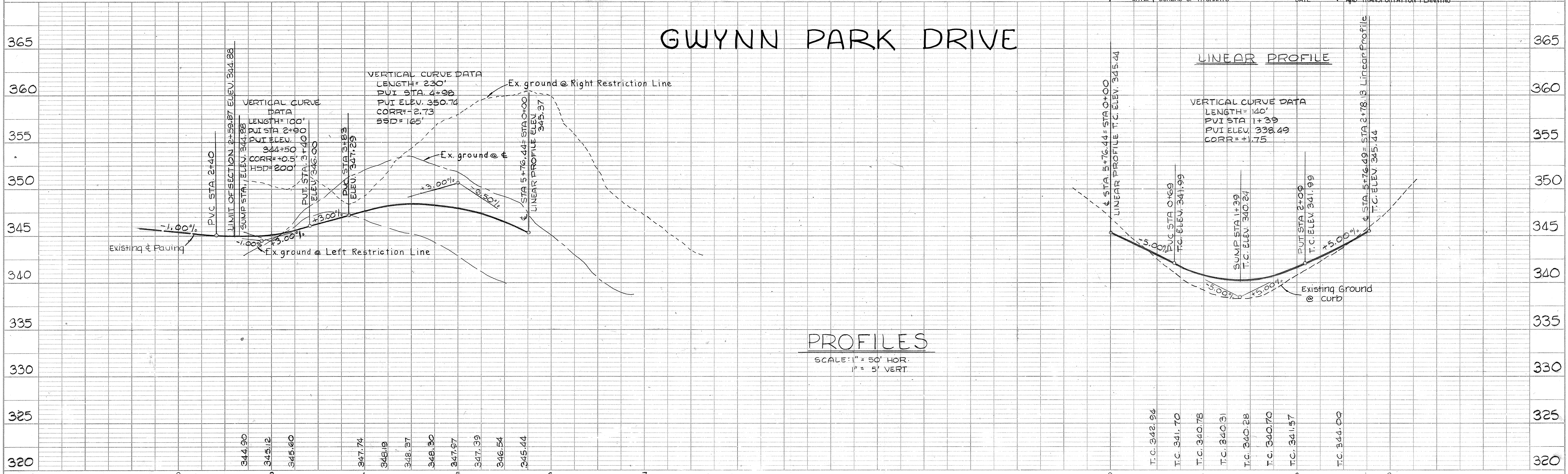


Section 14  
PLAN AND PROFILE: GWYNN PARK DRIVE  
**GWYNN ACRES**  
2ND ELECTION DISTRICT  
JUNE 22, 1973  
HOWARD COUNTY, MARYLAND  
SHEET 1 OF 2  
SCALE AS SHOWN

DEPARTMENT OF PUBLIC WORKS  
J.A. McInnis 9/7/73  
CHIEF, BUREAU OF HIGHWAYS  
DATE

OFFICE OF PLANNING AND ZONING  
J.H. Clouston 9/5/73  
CHIEF, DIVISION OF LAND DEVELOPMENT  
AND TRANSPORTATION PLANNING  
DATE

# GWYNN PARK DRIVE



PROFILES  
SCALE: 1" = 50' HOR.  
1" = 5' VERT

PLAN  
SURVEYED, PLOTTED, AND CHECKED BY: [Blank]  
DATE: [Blank]  
NOTE BOOK NO. [Blank]

PROFILE  
SURVEYED, PLOTTED, AND CHECKED BY: [Blank]  
DATE: [Blank]  
NOTE BOOK NO. [Blank]

RP 57

**DEVELOPER'S CERTIFICATE**

I certify that all development and/or construction will be done according to this plan of development and plan for Erosion and Sediment Control, and I also authorize periodic on-site inspection by the Howard Soil Conservation District or their authorized agents, as are deemed necessary. Deviation from this plan will not be made unless authorized by the Howard Soil Conservation District.

*Richard Mueller*  
Date

**ENGINEER'S CERTIFICATE**

I certify that this plan for Erosion and Sediment Control represents a practical and workable plan based on my personal knowledge of the site conditions and that it was prepared in accordance with the requirements of the Howard Soil Conservation District.

*Charles E. Miller*  
Date **9/13/73**

Signature of Engineer Date

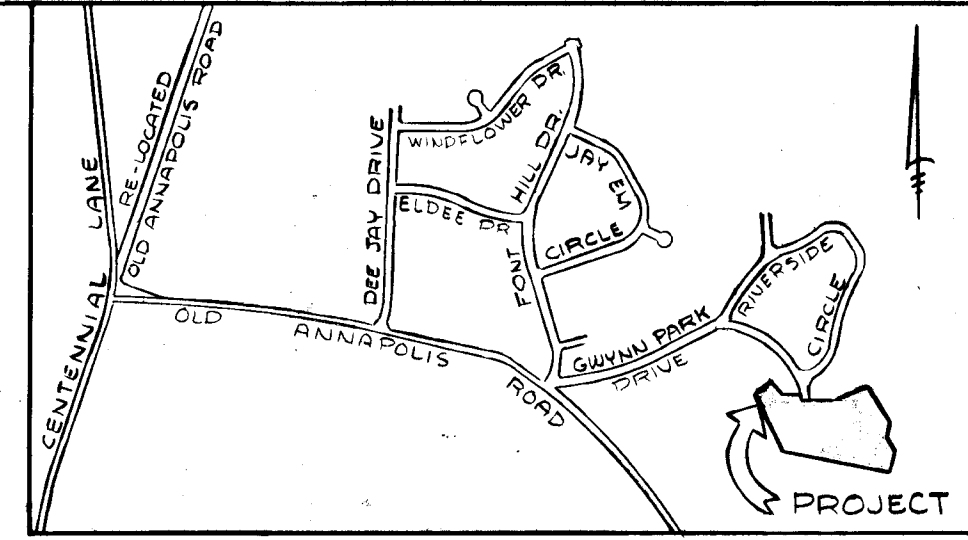
Reviewed for Howard County Soil Conservation District and meets Technical Requirements.

*Robert W. Ziehm*  
Date **9/13/73**

APPROVED: District Coordinator Date

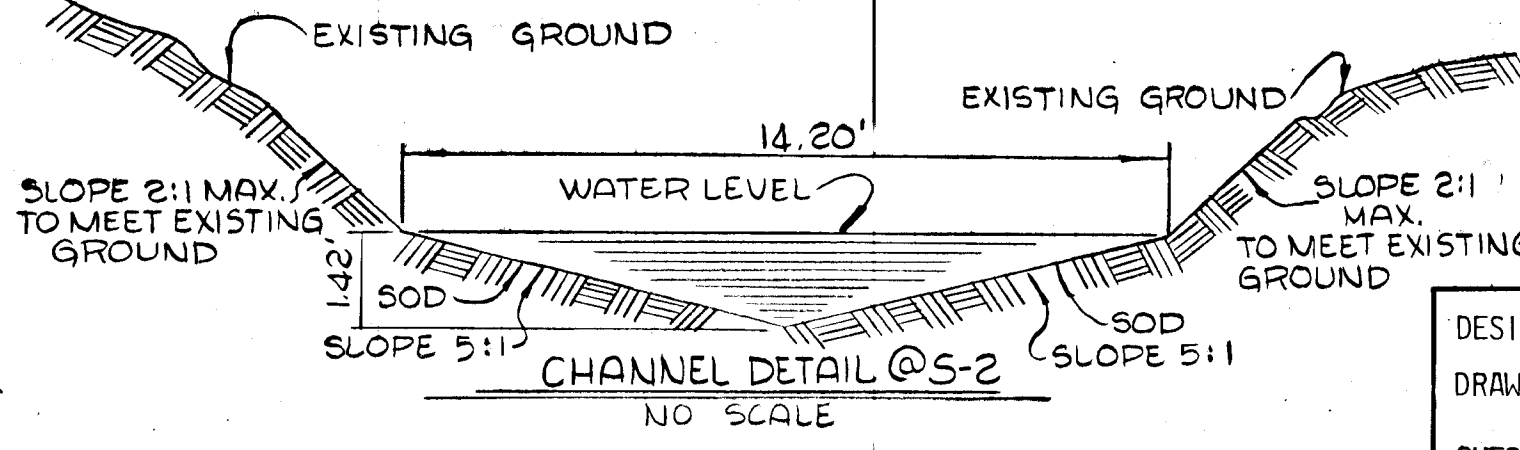
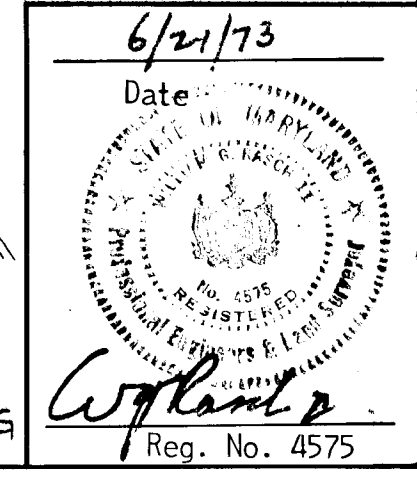
Howard Soil Conservation District

- SEDIMENT CONTROL NOTES**
- The developer shall notify the Howard County Soil Conservation District at least 24 hours prior to beginning any construction shown hereon (465-3180).
  - Berms, sediment traps, etc., to be constructed prior to any onsite grading or disturbance to any existing surface material, and are to be stabilized as soon as constructed.
  - All sediment control structures to remain in place until permission for their removal has been obtained from the Howard Soil Conservation District. (465-3180 or 465-5000 Ext. 291)
  - All graded areas not to be sodded shall be stabilized by seeding and mulching in accordance with the following:
    - Site preparation:
      - Harrow or disc in areas proposed to be seeded the following materials at the specified rate, to a depth of 3":
        - Pulverized limestone at 1 1/2 tons/acre.
        - Commercial fertilizer 5-10-10 at 3/4 tons/acre.
        - Super phosphate at 600 lbs/acre.
      - Seeding:
        - Sow the following seed mixture at the rate of 200 lbs/acre with a mechanical spreader:
          - 20% Annual Rye Grass
          - 80% Kentucky 31 Fescue
        - The seeded area shall then be raked with a York Rake (minimum of 2 passes), covered and compacted with Cultipacker or other approved method.
      - Mulching:
        - Seeded areas shall be uniformly mulched immediately after seeding with unweathered small grain straw at the rate of 1 1/2 to 2 tons/acre.
        - Tie mulch down with liquid asphalt at 0.1 gal/s.y. or emulsified asphalt at 0.04 gal/s.y. or mulch netting.



**STRUCTURE SCHEDULE**

STRUCTURE	TYPE	INV. IN	INV. OUT	TOPO ELEV.	STD DETAIL
I-1	A-5		336.49	340.24	P119-A-D-64A
I-2	A-5	339.04	338.79	344.95	P119-A-D-64A
I-3	A-10	341.50	339.28	344.95	P119-A-D-64A
S-1	"C"		329.36	331.36	P107-Dwg D-52
S-2	"C"		338.14	342.14	P107-Dwg D-52
S-3	"E"	350.81		354.31	P107-Dwg D-52



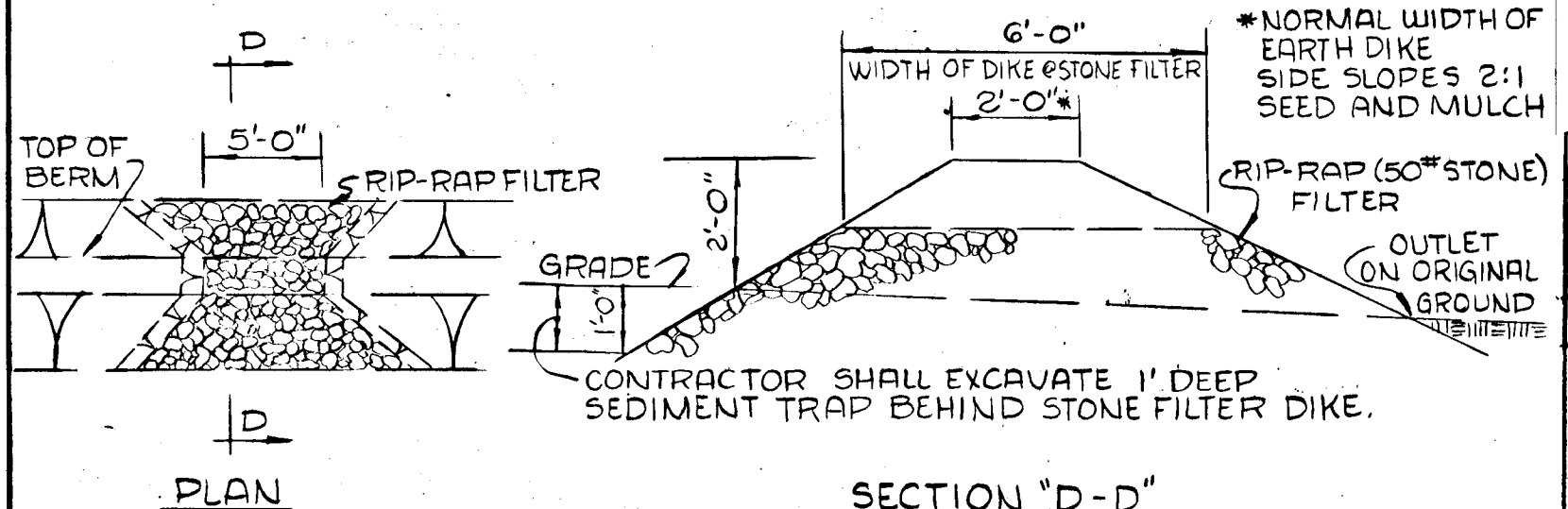
**CHANNEL DESIGN DATA**

A = 10.08'	S = 2.00%
P = 14.48'	S <sup>1/2</sup> = 0.1414
R = 0.70	n = 0.03
R <sup>2/3</sup> = 0.788	WATER DEPTH = 1.42'
V = 1.485/n × R <sup>2/3</sup> × S <sup>1/2</sup>	
V = 1.485/0.03 × 0.788 × 0.1414	
V = 5.5 fps	
Q = A × V	
Q = 10.08 × 5.5	
Q = 55.4 cfs	

DESIGNED BY: C.J. Crovo  
DRAWN BY: A.R. Zierden  
CHECKED BY: R.B. Carter

**PURDUM AND JESCHKE**  
CONSULTING ENGINEERS AND LAND SURVEYORS  
1023 N. CALVERT STREET  
BALTIMORE, MARYLAND 21202

OWNER AND DEVELOPER  
THE DEVELOPMENT AND INVESTMENT CORPORATION OF MARYLAND  
9998 OLD ANNAPOLIS ROAD  
ELLICOTT CITY, MARYLAND 21043



**CHANNEL DESIGN DATA**

A = 1.10'	S = 2.40%
P = 4.80'	S <sup>1/2</sup> = 0.1549
R = 0.23	n = 0.03
R <sup>2/3</sup> = 0.375	WATER DEPTH = 0.47'
V = 1.485/n × R <sup>2/3</sup> × S <sup>1/2</sup>	
V = 1.485/0.03 × 0.375 × 0.1549	
V = 2.9 fps	
Q = A × V	
Q = 1.10 × 2.9	
Q = 3.2 cfs	

- GENERAL NOTES**
- All construction shown hereon shall be in accordance with the Howard County Road Construction Code and Standard Specifications dated November 27, 1962 and revised August 1967.
  - Reference to page and drawing numbers shown hereon are referred to the above mentioned Road Construction Code and Standard Specifications.
  - Design Speed - 25 mph.

**CHANNEL DESIGN DATA**

A = 7.81'	S = 4.00%
P = 12.74'	S <sup>1/2</sup> = 0.2000
R = 0.61	n = 0.03
R <sup>2/3</sup> = 0.719	WATER DEPTH = 1.25'
V = 1.485/n × R <sup>2/3</sup> × S <sup>1/2</sup>	
V = 1.485/0.03 × 0.719 × 0.2000	
V = 7.1 fps	
Q = A × V	
Q = 7.81 × 7.1	
Q = 55.5 cfs	

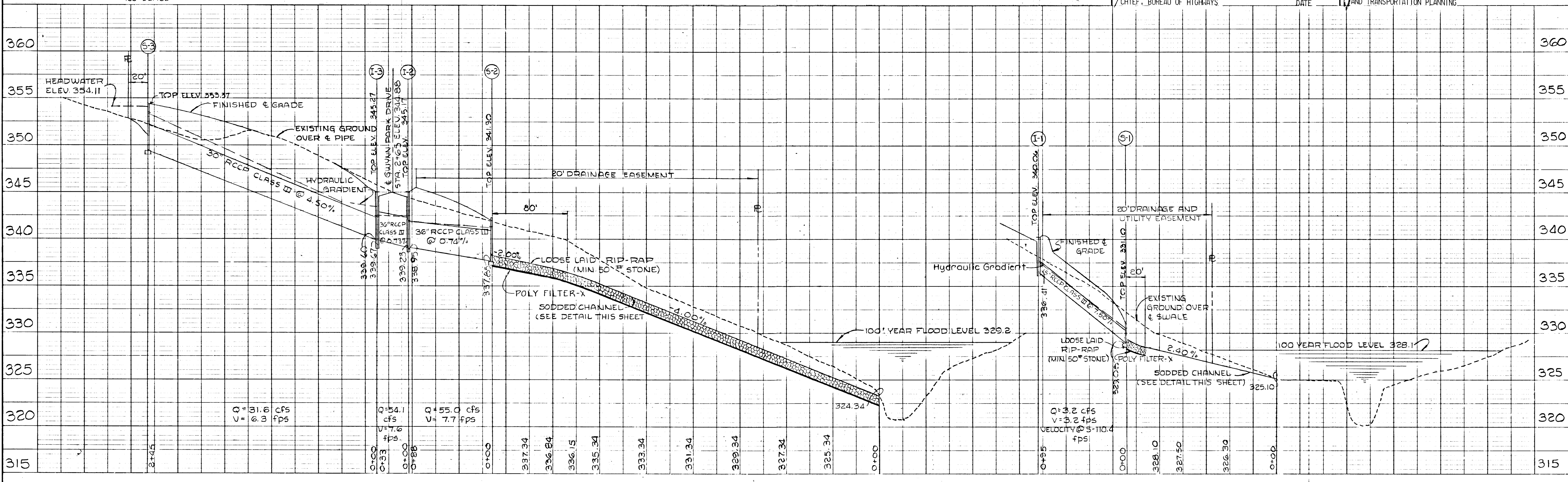
APPROVED  
DIVISION OF LAND DEVELOPMENT AND TRANSPORTATION PLANNING  
HOWARD COUNTY, MARYLAND  
DATE **Aug 20, 1973**

STORM DRAIN PROFILES AND DETAILS  
**GWYNN ACRES**  
2ND ELECTION DISTRICT  
JUNE 22, 1973

HOWARD COUNTY, MARYLAND  
SHEET 2 OF 2  
SCALE AS SHOWN

DEPARTMENT OF PUBLIC WORKS  
*J.P. McKeen*  
CHIEF, BUREAU OF HIGHWAYS

OFFICE OF PLANNING AND ZONING  
*J.H. Clouston*  
CHIEF, DIVISION OF LAND DEVELOPMENT AND TRANSPORTATION PLANNING



DATE  
BY  
CHECKED  
DATE

DATE  
BY  
CHECKED  
DATE