

INDEX SHEETS	
SHEET NO.	DESCRIPTION
1	TITLE SHEET
2	TYPICAL SECTION & DETAILS
3	DRAINAGE AREA MAP
4	CAPTAIN MOREY DRIVE STA. 0+00 TO STA. 9+39.49
5	CAPTAIN MOREY DRIVE STA. 9+39.49 TO STA. 17+00
6	CAPTAIN MOREY DRIVE STA. 17+00 TO STA. 22+14.86
7	STORM DRAIN PROFILES
1 OF 1	SEDIMENT CONTROL DETAILS

COLUMBIA

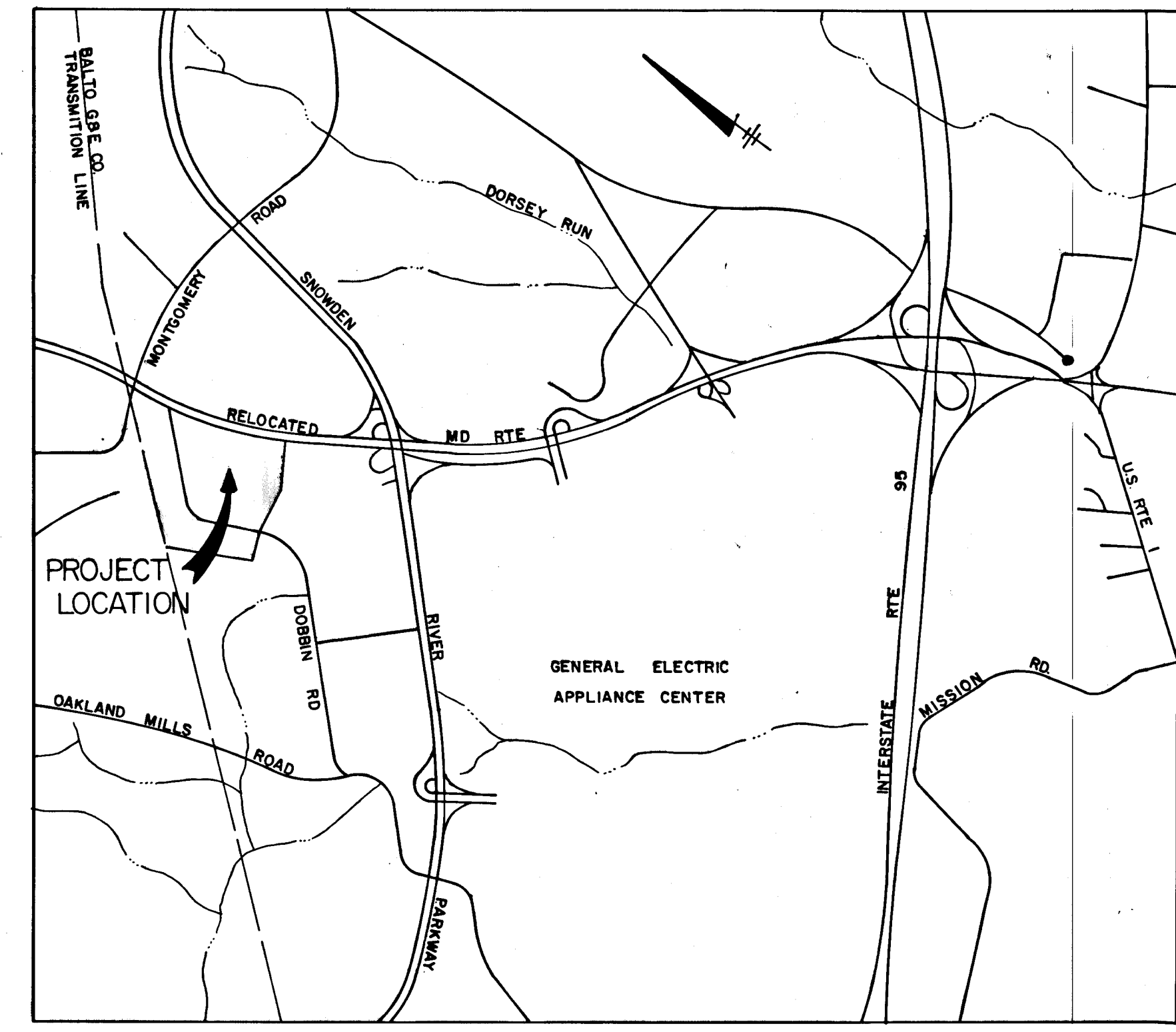
HOWARD COUNTY, MARYLAND
6TH ELECTION DISTRICT

ROAD CONSTRUCTION PLANS

COLUMBIA AUTO PARK
SECTION I AREA I

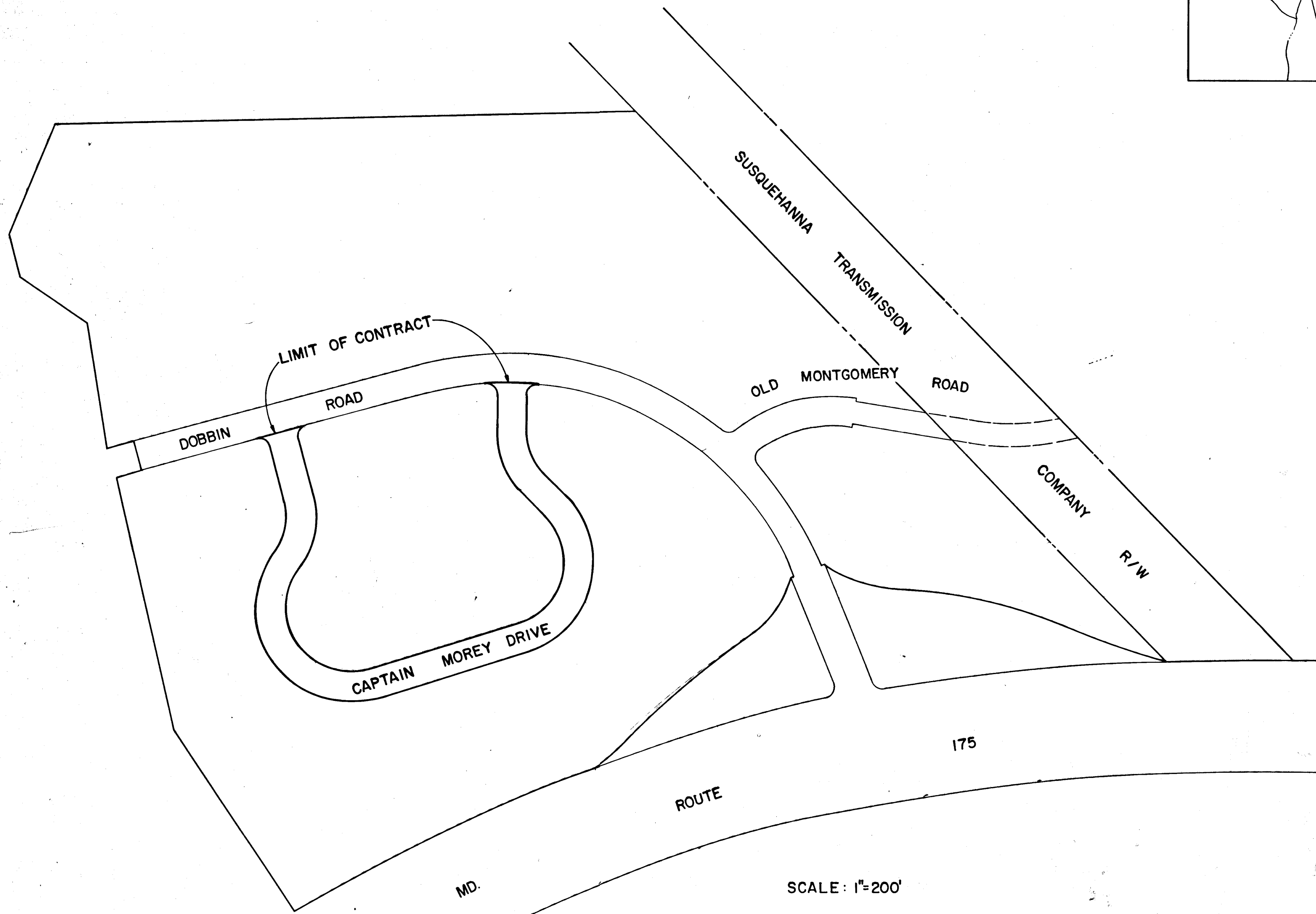
OWNER AND DEVELOPER

THE HOWARD RESEARCH AND DEVELOPMENT CORP.
COLUMBIA, MARYLAND



GENERAL NOTES

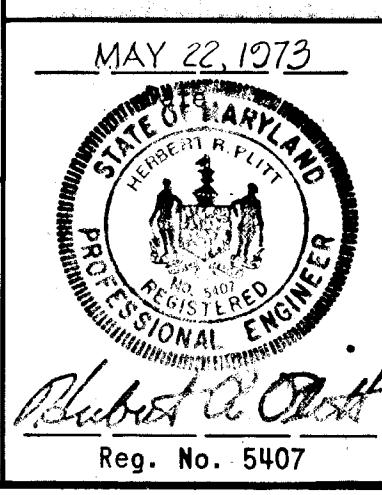
- ALL WORK SHALL BE PERFORMED IN ACCORDANCE WITH THE HOWARD COUNTY ROAD CONSTRUCTION CODE AND STANDARD SPECIFICATIONS.
- APPROXIMATE LOCATION OF EXISTING UTILITIES ARE SHOWN. THE CONTRACTOR SHALL TAKE ALL NECESSARY PRECAUTIONS TO PROTECT THE EXISTING UTILITIES AND MAINTAIN UNINTERRUPTED SERVICE. ANY DAMAGE INCURRED DUE TO CONTRACTOR'S OPERATION SHALL BE REPAIRED IMMEDIATELY AT THE CONTRACTOR'S EXPENSE.
- THE CONTRACTOR SHALL TEST PIT EXISTING UTILITIES, WHERE DIRECTED BY THE ENGINEER, A MINIMUM OF TWO WEEKS IN ADVANCE OF CONSTRUCTION OPERATIONS.
- CONTRACTOR TO NOTIFY THE FOLLOWING UTILITIES AT LEAST THREE DAYS BEFORE STARTING WORK SHOWN ON THIS/THESE DRAWINGS:
 BELL TELEPHONE SYSTEM 393-3649
 LONG DISTANCE CABLE DIVISION 393-3553 OR 3554
 BALTIMORE GAS & ELECTRIC CO. 539-8000 EXT. 691
- BRICK BULKHEADS SHALL BE INSTALLED IN ALL STORM DRAIN STUBS.
- ALL INLETS SHALL BE HOWARD COUNTY STANDARDS
- STORM DRAIN TRENCHES WITHIN ROAD RIGHTS-OF-WAY SHALL BE BACKFILLED AND COMPACTED IN ACCORDANCE WITH HOWARD COUNTY ROAD CODE.
- DESIGNED TRAFFIC SPEED IN ACCORDANCE WITH THE AMERICAN ASSOCIATION OF STATE HIGHWAY OFFICIAL STANDARDS.
CAPTAIN MOREY DRIVE - 25 M.P.H.
- CONTRACTOR TO NOTIFY THE HOWARD COUNTY SOIL CONSERVATION DISTRICT #465-3180 AT LEAST THREE DAYS BEFORE STARTING WORK SHOWN ON THESE DRAWINGS.
- TREES ARE TO BE PROTECTED AGAINST DAMAGE TO THE MAXIMUM EXTENT REASONABLE. TREES WHICH ARE TO REMAIN IN STREETS AND OTHER RIGHTS OF WAY WILL BE MARKED BY THE ENGINEER PRIOR TO COMMENCING OF CONSTRUCTION OPERATIONS.
- PIPE SHALL NOT BE INSTALLED BY THE CONTRACTOR UNTIL THE LENGTH CALLED FOR AT EACH STATION HAS BEEN APPROVED BY THE ENGINEER IN THE FIELD.
- END WALLS: THE TYPES OF ENDWALLS SHOWN ON THE PLANS ARE SUBJECT TO CHANGE, AND ARE NOT TO BE CONSTRUCTED UNTIL GRADING IS COMPLETED. DIMENSIONS OF ENDWALLS AS SHOWN ON STANDARD PLATES MAY BE MODIFIED FOR USE WITH CORRUGATED METAL PIPE, PIPE ARCH OR OTHERWISE AS DIRECTED BY THE ENGINEER.
- INVERTS OF INLETS AND HEADWALLS: INVERT ELEVATIONS OF INLETS AND HEADWALLS MAY BE MODIFIED TO MEET CONDITIONS ENCOUNTERED DURING INSTALLATION OF DRAINAGE STRUCTURES. DIMENSIONS OF STRUCTURES AS SHOWN ON STANDARD PLATES MAY BE MODIFIED FOR USE WITH CORRUGATED METAL PIPE, PIPE ARCH OR OTHERWISE DIRECTED BY THE ENGINEER.
- INSTALLATION OF TRAFFIC CONTROL DEVICES, MARKING AND SIGNING SHALL BE ACCORDANCE WITH THE MANUAL OF UNIFORM TRAFFIC CONTROL DEVICES 1971 EDITION.



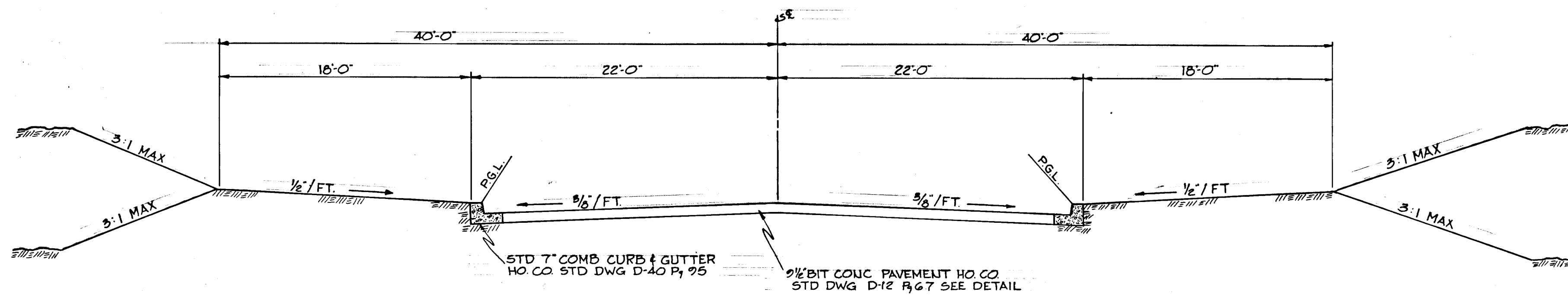
APPROVED
DIVISION OF LAND DEVELOPMENT
AND TRANSPORTATION PLANNING
HOWARD COUNTY, MARYLAND
DATE: 5/29/73
[Signature]

DEPARTMENT OF PUBLIC WORKS
[Signature] 5-30-73
CHIEF, BUREAU OF HIGHWAYS DATE

[Signature] 5/30/73
CHIEF, DIVISION OF LAND DEVELOPMENT AND
TRANSPORTATION PLANNING DATE

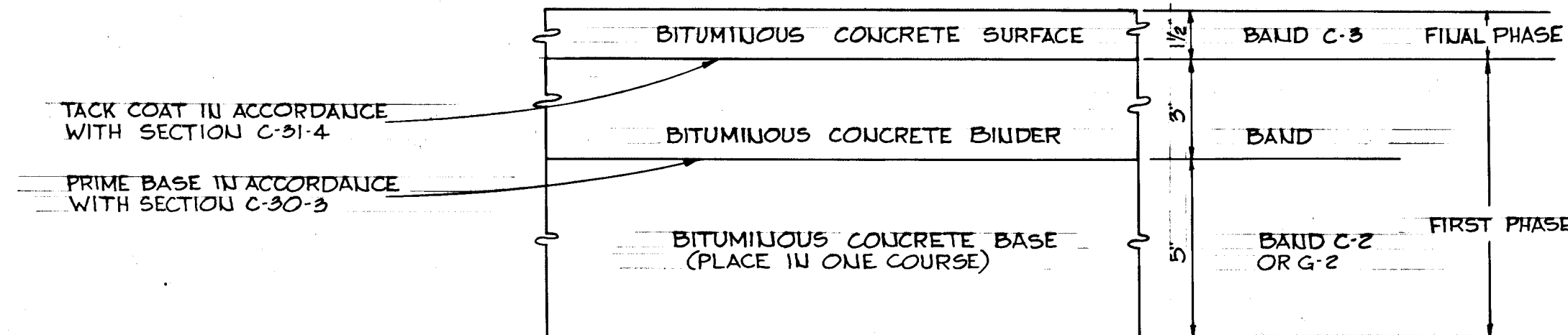


GREEN ASSOCIATES, INC.
CONSULTING ENGINEERS
TOWSON, MARYLAND



80' ROW. TYPICAL SECTION

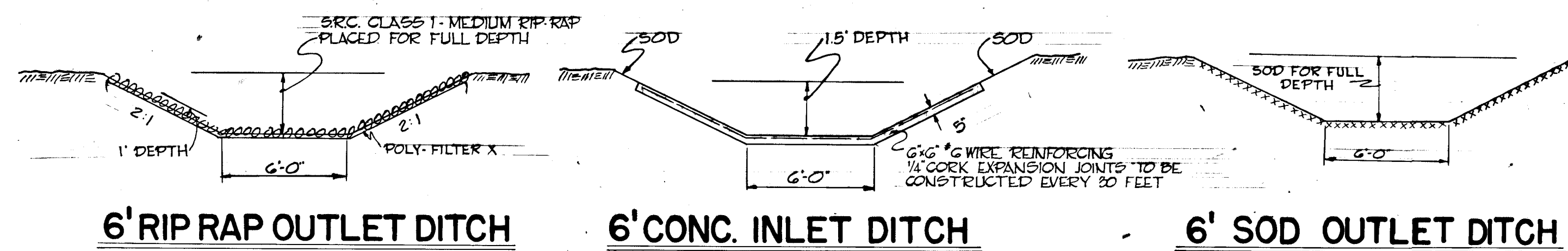
SCALE: 1"=60'



- CLEARING AND GRADING ARTICLE C-1
- SUBGRADE ARTICLE C-2
- BASE COURSE ARTICLE C-31 OR 33
- BINDER COURSE ARTICLE C-33
- SURFACE COURSE ARTICLE C-31

NOTE:
PAVEMENT TO BE CONSTRUCTED IN ACCORDANCE WITH THE HOWARD COUNTY ROAD CONSTRUCTION CODE AND SPECIFICATIONS DWG D-12 R 67

9-1/2" PAVEMENT DETAIL

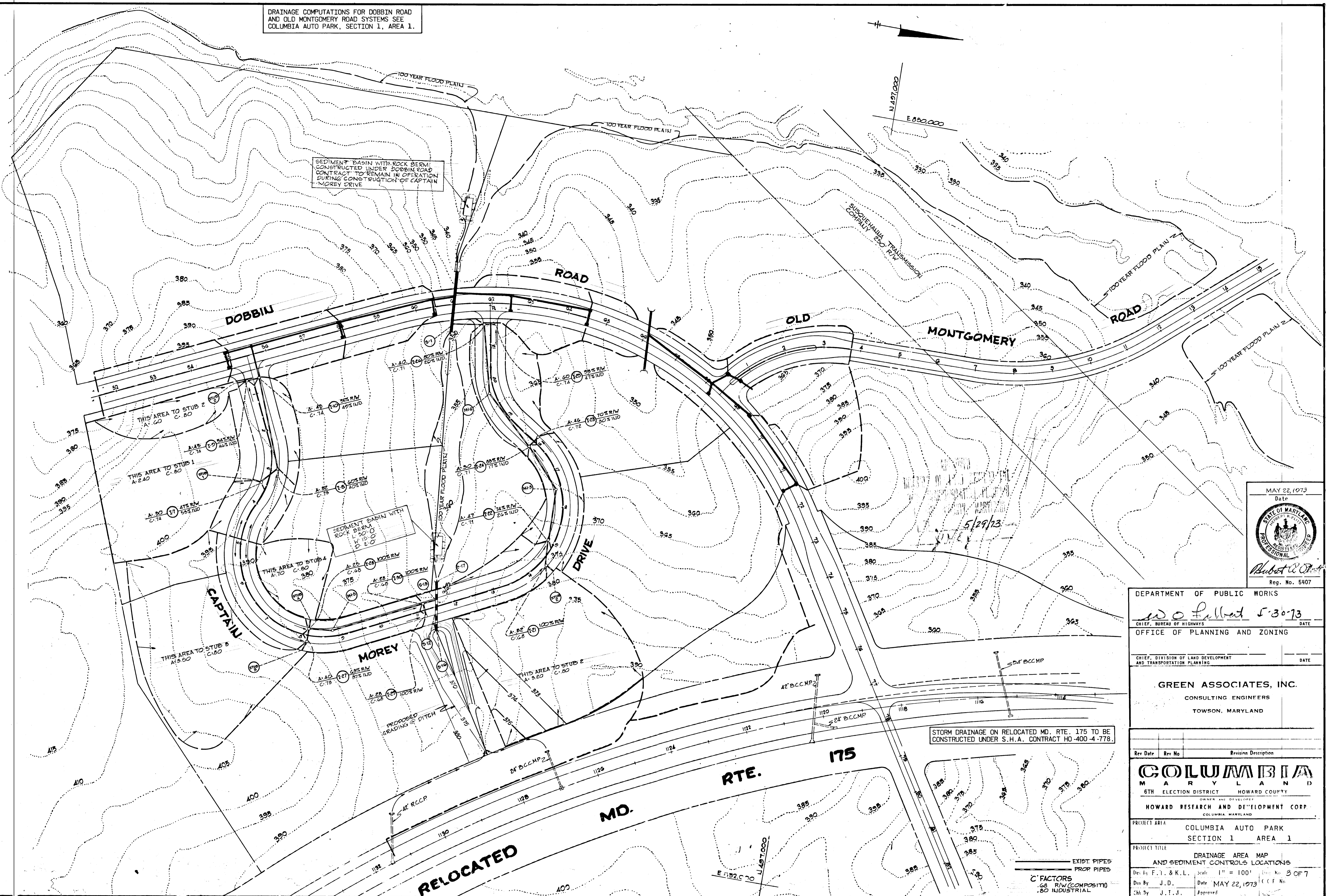


RECEIVED
DIVISION OF LAND DEVELOPMENT
AND TRANSPORTATION PLANNING
HOWARD COUNTY, MARYLAND
DATE 5/29/73
J.M.C.

DEPARTMENT OF PUBLIC WORKS		
<i>W. O. Lillard</i>	5-30-73	DATE
CHIEF, BUREAU OF HIGHWAYS		
OFFICE OF PLANNING AND ZONING		
CHIEF, DIVISION OF LAND DEVELOPMENT AND TRANSPORTATION PLANNING		DATE
GREEN ASSOCIATES, INC. CONSULTING ENGINEERS TOWSON, MARYLAND		
Rev. Date	Rev. No.	Revision Description
COLUMBIA MARYLAND		
6TH ELECTION DISTRICT HOWARD COUNTY		OWNER AND DEVELOPER
HOWARD RESEARCH AND DEVELOPMENT CORP. COLUMBIA, MARYLAND		
PROJECT AREA COLUMBIA AUTO PARK SECTION 1 AREA 1		
PROJECT TITLE TYPICAL SECTIONS & DETAILS		
Des. By K.L. & F.T.	Scale AS SHOWN	Dwg. No. 2 OF 7
Chk. By J.D.	Date MAY 22, 1973	C.C.F. No.
Chk. By J.T.J.	Approved	

MAY 22, 1973
Date
STATE OF MARYLAND
PROFESSIONAL ENGINEER
Reg. No. 5407

DRAINAGE COMPUTATIONS FOR DOBBIN ROAD AND OLD MONTGOMERY ROAD SYSTEMS SEE COLUMBIA AUTO PARK, SECTION 1, AREA 1.



MAY 22, 1973
Date
STATE OF MARYLAND
PROFESSIONAL ENGINEER
Hubert W. [Signature]
Reg. No. 5407

DEPARTMENT OF PUBLIC WORKS
CHIEF, BUREAU OF HIGHWAYS
OFFICE OF PLANNING AND ZONING
CHIEF, DIVISION OF LAND DEVELOPMENT AND TRANSPORTATION PLANNING

W. O. [Signature] 5-30-73
DATE

GREEN ASSOCIATES, INC.
CONSULTING ENGINEERS
TOWSON, MARYLAND

Rev. Date	Rev. No.	Revision Description

COLUMBIA
MARYLAND
6TH ELECTION DISTRICT HOWARD COUNTY
OWNER AND DEVELOPER
HOWARD RESEARCH AND DEVELOPMENT CORP.
COLUMBIA, MARYLAND

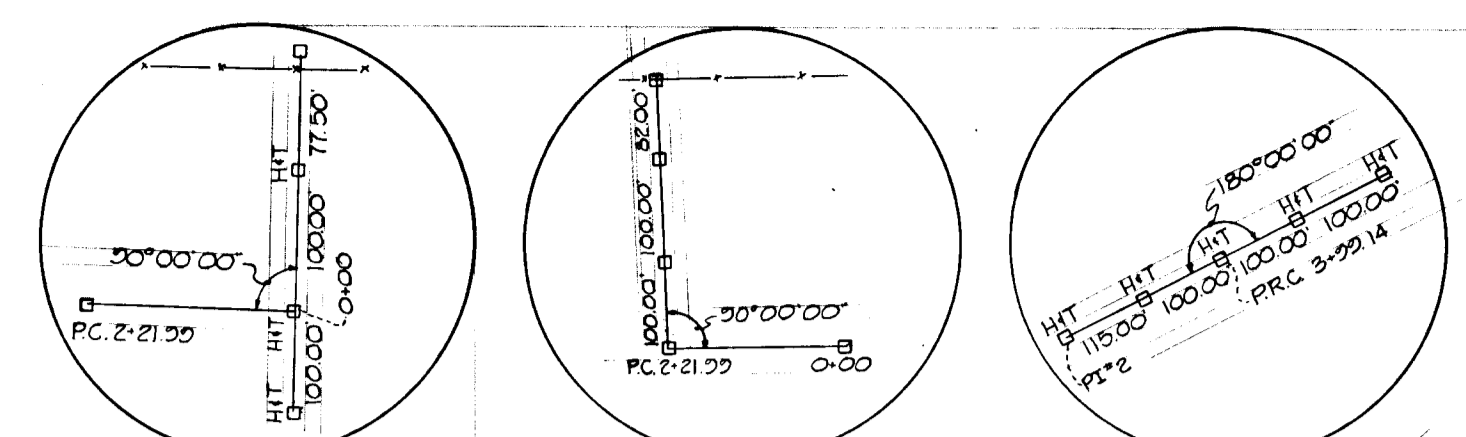
PROJECT AREA
COLUMBIA AUTO PARK
SECTION 1 AREA 1

PROJECT TITLE
DRAINAGE AREA MAP
AND SEDIMENT CONTROLS LOCATIONS

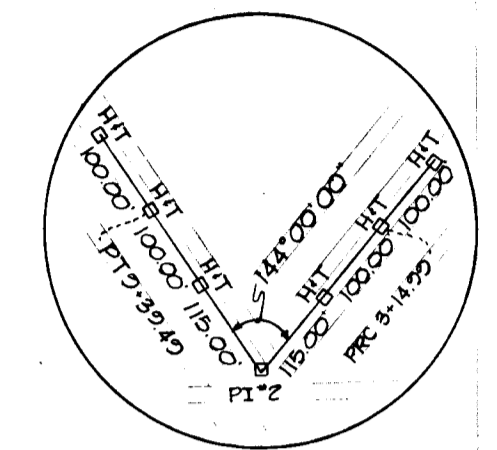
Des. By F. I. & K. L. Scale 1" = 100' (Sheet No. 3 OF 7)
Dir. By J. D. Date MAY 22, 1973
Chk. By J. I. J. Approved

4137

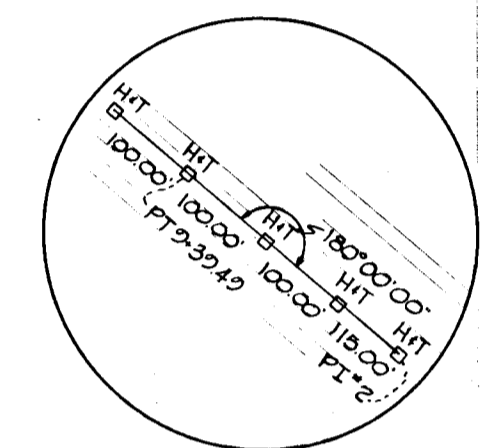
F-73-76C



REF. 0+00 REF. P.C. 2+21.99 REF. P.R.C. 3+99.14



REF. P.I.*2



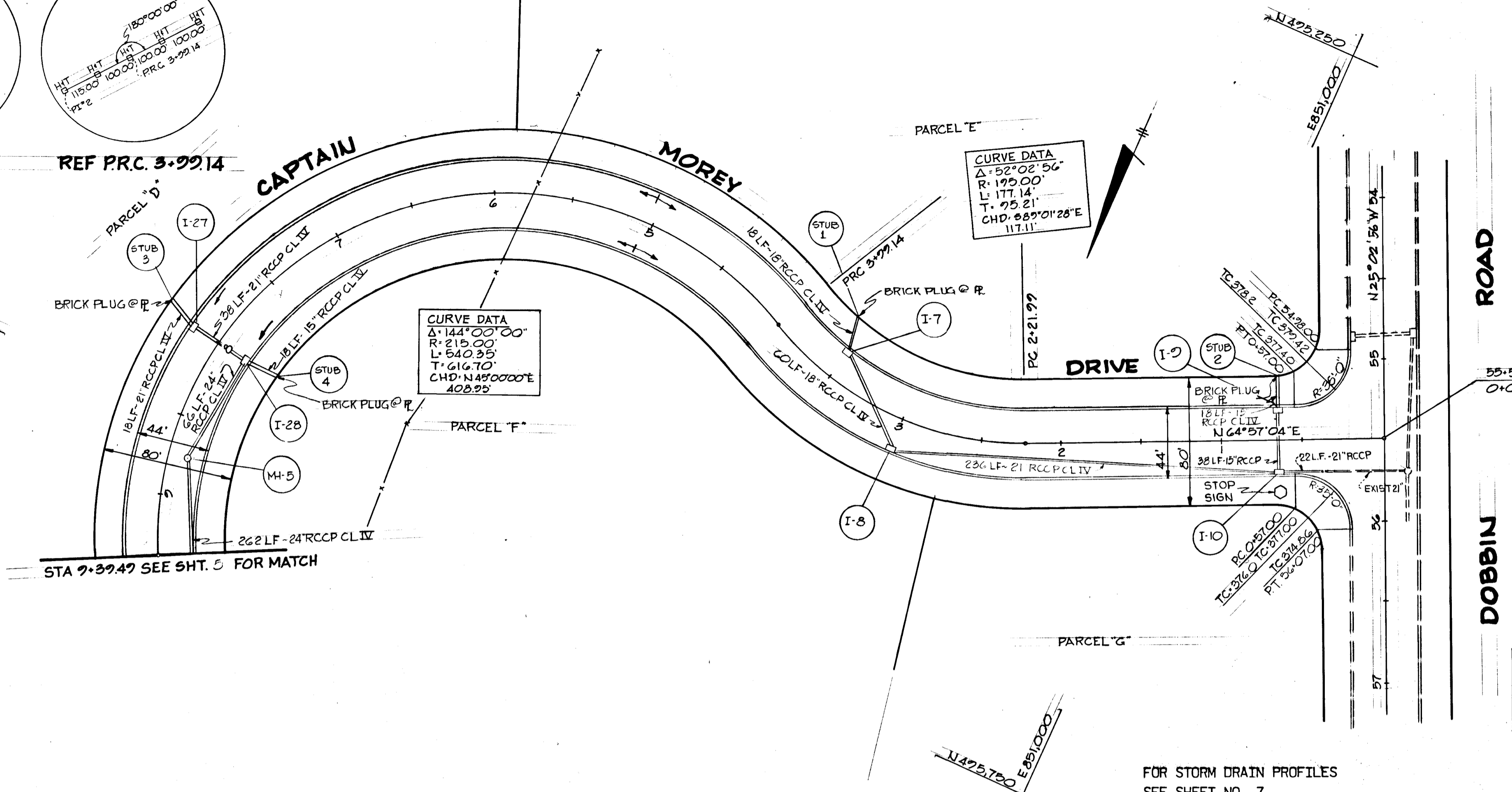
REF. P.T. 9+39.49

LEGEND

- EXISTING GROUND 65' RT. OF ϕ
- EXISTING GROUND 65' LT. OF ϕ
- EXISTING GROUND @ ϕ
- FINISHED GRADE

PLAN
SCALE: 1"=50'

BM * 52 ELEV. 403.62
CUT SPRING COVER
200' RT STA 52'
DOBBIN ROAD



CURVE DATA
 $\Delta: 144^{\circ}00'00''$
 $R: 215.00'$
 $L: 640.35'$
 $T: 616.70'$
 $CHD: N48^{\circ}00'00''E$
 $408.99'$

CURVE DATA
 $\Delta: 52^{\circ}02'56''$
 $R: 195.00'$
 $L: 177.14'$
 $T: 95.21'$
 $CHD: S65^{\circ}01'28''E$
 $117.11'$

STRUCTURE SCHEDULE						
NO.	TYPE	LOCATION	INV. IN	INV. OUT	T.C.P. ELEV.	REMARKS
I-7	DBL. 'S' COMB.	STA. 3+50 - 22' RT.	380.5	380.3	385.72	HO. CO. DWG. D-99 - PG. 154
I-8	DBL. 'S' COMB.	STA. 3+00 - 22' LT.	378.9	378.9	384.21	HO. CO. DWG. D-99 - PG. 154
I-9	DBL. 'S' COMB.	STA. 0+65.5 - 22' RT.	372.5	372.5	377.91	HO. CO. DWG. D-99 - PG. 154
I-10	DBL. 'S' COMB.	STA. 0+65.5 - 22' LT.	371.7	371.5	377.30	HO. CO. DWG. D-99 - PG. 154
I-27	DBL. 'S' COMB.	STA. 8+00 - 22' RT.	377.7	377.3	381.82	HO. CO. DWG. D-99 - PG. 154
I-28	DBL. 'S' COMB.	STA. 8+00 - 22' LT.	376.5	376.5	381.66	HO. CO. DWG. D-99 - PG. 154
MH-5	STD. MANHOLE	STA. 8+75 - 12' LT.	373.7	373.5	379.60	HO. CO. DWG. D-103 - PG. 158

NOTE: OFFSET DIMENSIONS TO INLETS ARE TO BACK OF CURB

GREEN ASSOCIATES, INC.
CONSULTING ENGINEERS
TOWSON, MARYLAND

DATE: MAY 22, 1973

STATE OF MARYLAND
PROFESSIONAL ENGINEER
J. D. J.

Rev. Date: _____
Rev. No: _____
Revision Description: _____

COLUMBIA
MARYLAND
6TH ELECTION DISTRICT HOWARD COUNTY
HOWARD RESEARCH AND DEVELOPMENT CORP.
FOLLETT, MARYLAND

PROJECT AREA: COLUMBIA AUTO PARK SECTION 1 AREA 1
PROJECT TITLE: STA. 0+00 TO STA. 9+39.49

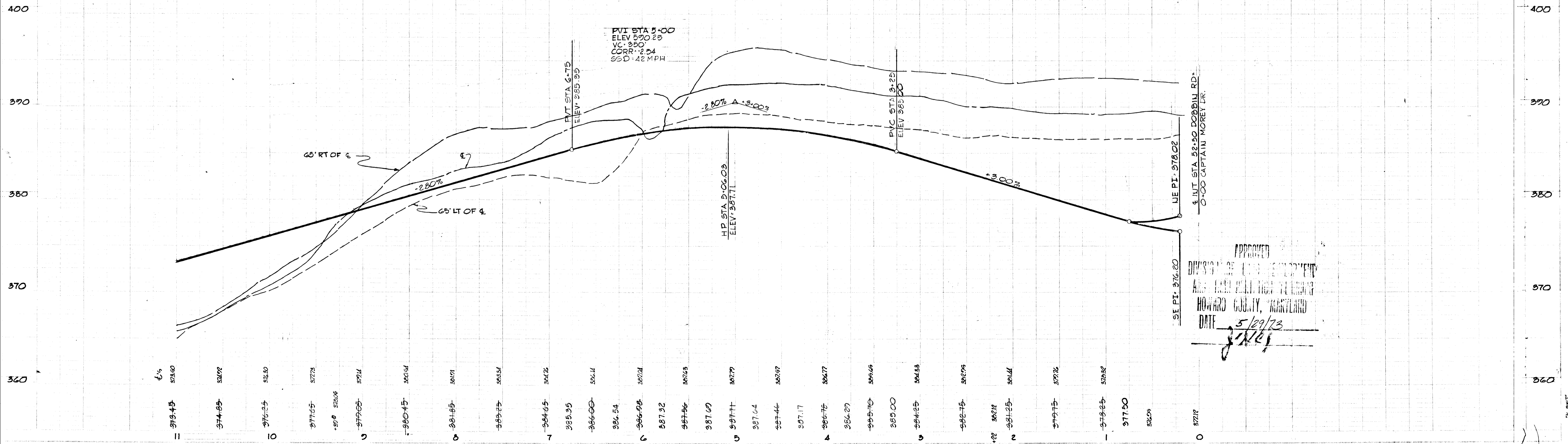
Des. By: F.T. & K.L. Scale: AS SHOWN
Date: MAY 22, 1973
Chk. By: J.T.J. Approved

NOTE: FOR ROADWAY AND STORM DRAIN OF DOBBIN ROAD SEE COLUMBIA AUTO PARK SECTION 1 AREA 1

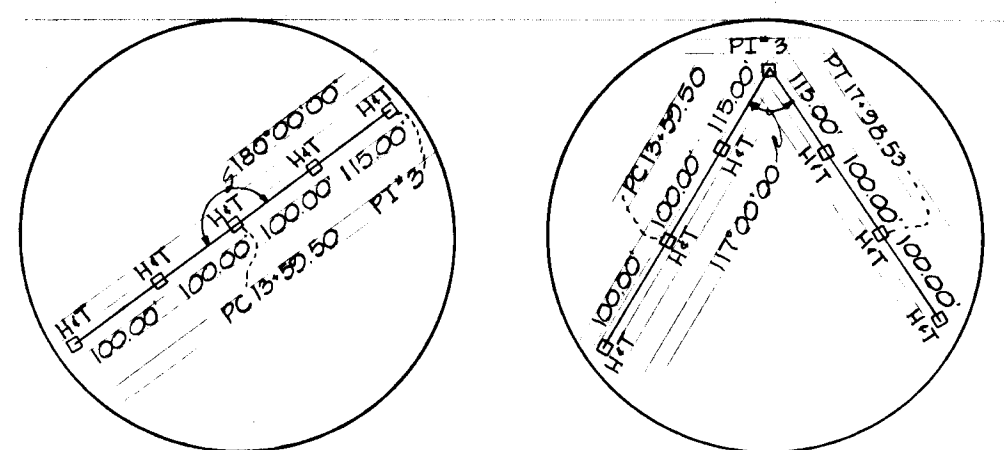
DEPARTMENT OF PUBLIC WORKS
CHIEF, BUREAU OF HIGHWAYS
OFFICE OF PLANNING AND ZONING
DATE: 5-30-73

CHIEF, DIVISION OF LAND DEVELOPMENT AND TRANSPORTATION PLANNING
DATE: _____

PROFILE
SCALE: 1"=5' VERT. 1"=50' HORIZ.



APPROVED
DIVISION OF LAND DEVELOPMENT
AND TRANSPORTATION PLANNING
HOWARD COUNTY, MARYLAND
DATE: 5/29/73
J.T.J.

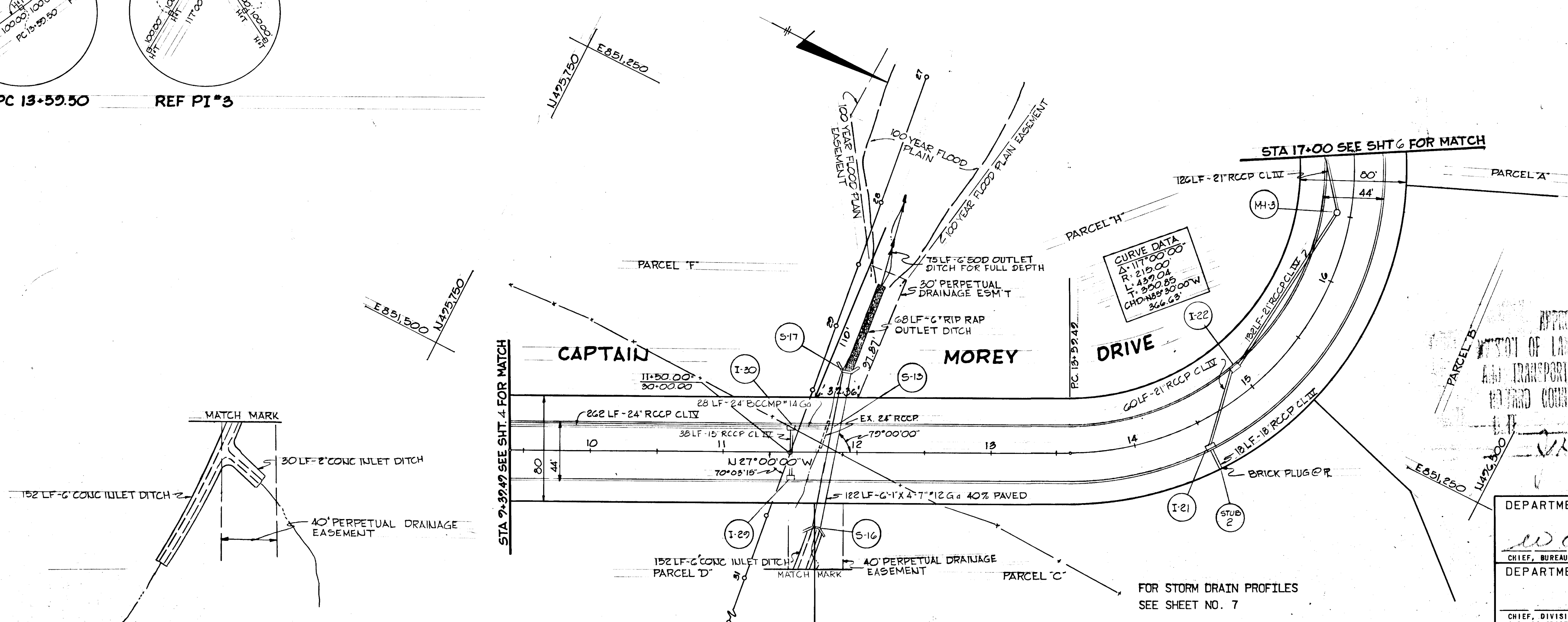


REF PC 13+59.50 REF PT #3

PLAN
SCALE: 1" = 50'

STRUCTURE SCHEDULE						
NO.	TYPE	LOCATION	INV. IN	INV. OUT	T.C.P. ELEV.	REMARKS
I-21	DBL.'S' COMB.	STA. 14+50 - 22' RT.	362.8	362.2	367.4	HO. CO. DWG. D-99 - PG. 154
I-22	DBL.'S' COMB.	STA. 15+00 - 22' LT.	361.4	361.4	366.70	HO. CO. DWG. D-99 - PG. 154
MH-3	STD. MANHOLE	STA. 16+50 - 10' LT.	359.27	359.07	362.15	HO. CO. DWG. D-103 - PG. 158
I-29	DBL.'S' COMB.	STA. 11+50 - 22' RT.	---	367.8	372.12	HO. CO. DWG. D-99 - PG. 154
I-30	DBL.'S' COMB.	STA. 11+50 - 22' LT.	367.75	367.7	371.24	HO. CO. DWG. D-99 - PG. 154
S-16	SMALL 'B' ARCH HEADWALL	STA. 11+68 - 58' RT.	361.59	---	366.62	HO. CO. DWG. D-49 - PG. 104
S-17	SMALL 'B' ARCH HEADWALL	STA. 11+92 - 64' LT.	---	361.00	---	HO. CO. DWG. D-49 - PG. 104

NOTE: OFFSET DIMENSIONS TO INLETS ARE TO BACK OF CURB.



GREEN ASSOCIATES, INC.
CONSULTING ENGINEERS
TOWSON, MARYLAND

MAY 22, 1973
Date

APPROVED
DEPARTMENT OF LAND DEVELOPMENT
AND TRANSPORTATION PLANNING
HOWARD COUNTY, MARYLAND

Rev. Date Rev. No. Revision Description

COLUMBIA
MARYLAND
6TH ELECTION DISTRICT HOWARD COUNTY
OWNER AND DEVELOPER
HOWARD RESEARCH AND DEVELOPMENT CORP.
COLUMBIA, MARYLAND

PROJECT AREA: COLUMBIA AUTO PARK SECTION 1 AREA 1
PROJECT TITLE: STA. 9+39.49 TO STA. 17+00

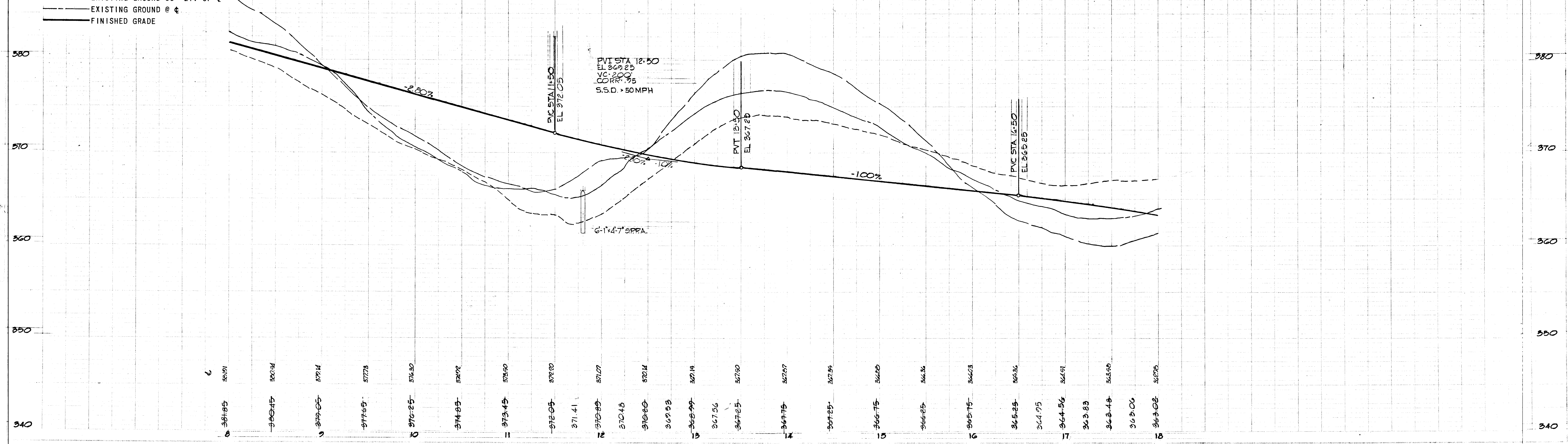
Des. By: F.T. & K.L. Scale: AS SHOWN Dwg. No. 5 OF 7
Dra. By: J.D. Date: MAY 22, 1973 C.C.F. No.
Chk. By: J.T.J. Approved

DEPARTMENT OF PUBLIC WORKS
CHIEF, BUREAU OF HIGHWAYS
DEPARTMENT OF PLANNING AND ZONING
CHIEF, DIVISION OF LAND DEVELOPMENT AND TRANSPORTATION PLANNING

5-30-73
DATE

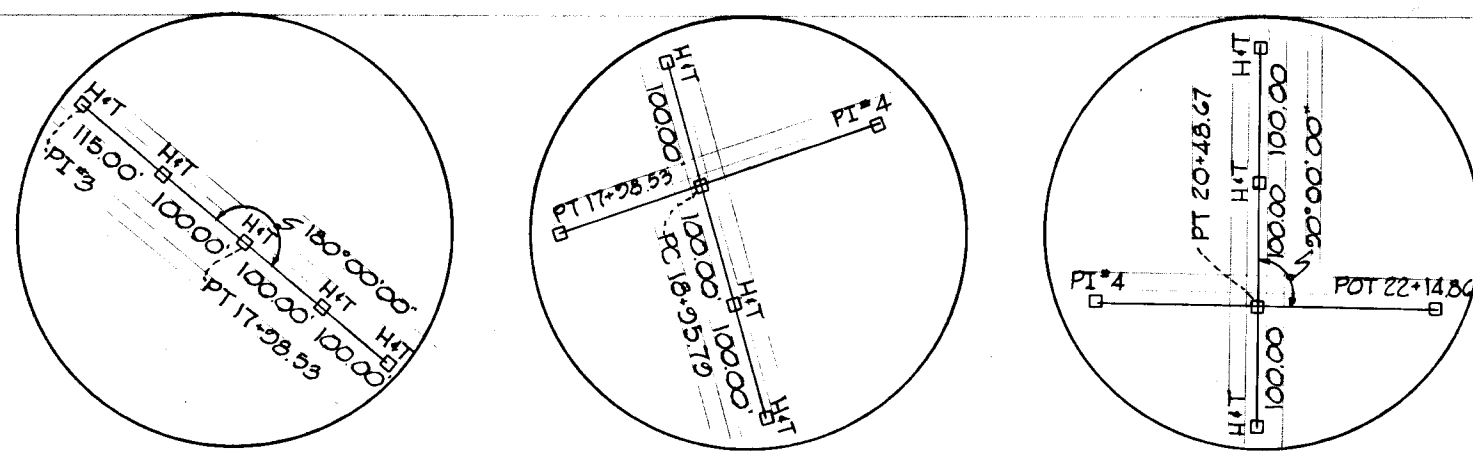
LEGEND
--- EXISTING GROUND 65' RT. OF #
--- EXISTING GROUND 65' LT. OF #
--- EXISTING GROUND @ #
--- FINISHED GRADE

PROFILE
SCALE: 1" = 5' VERT
1" = 50' HORZ



#137

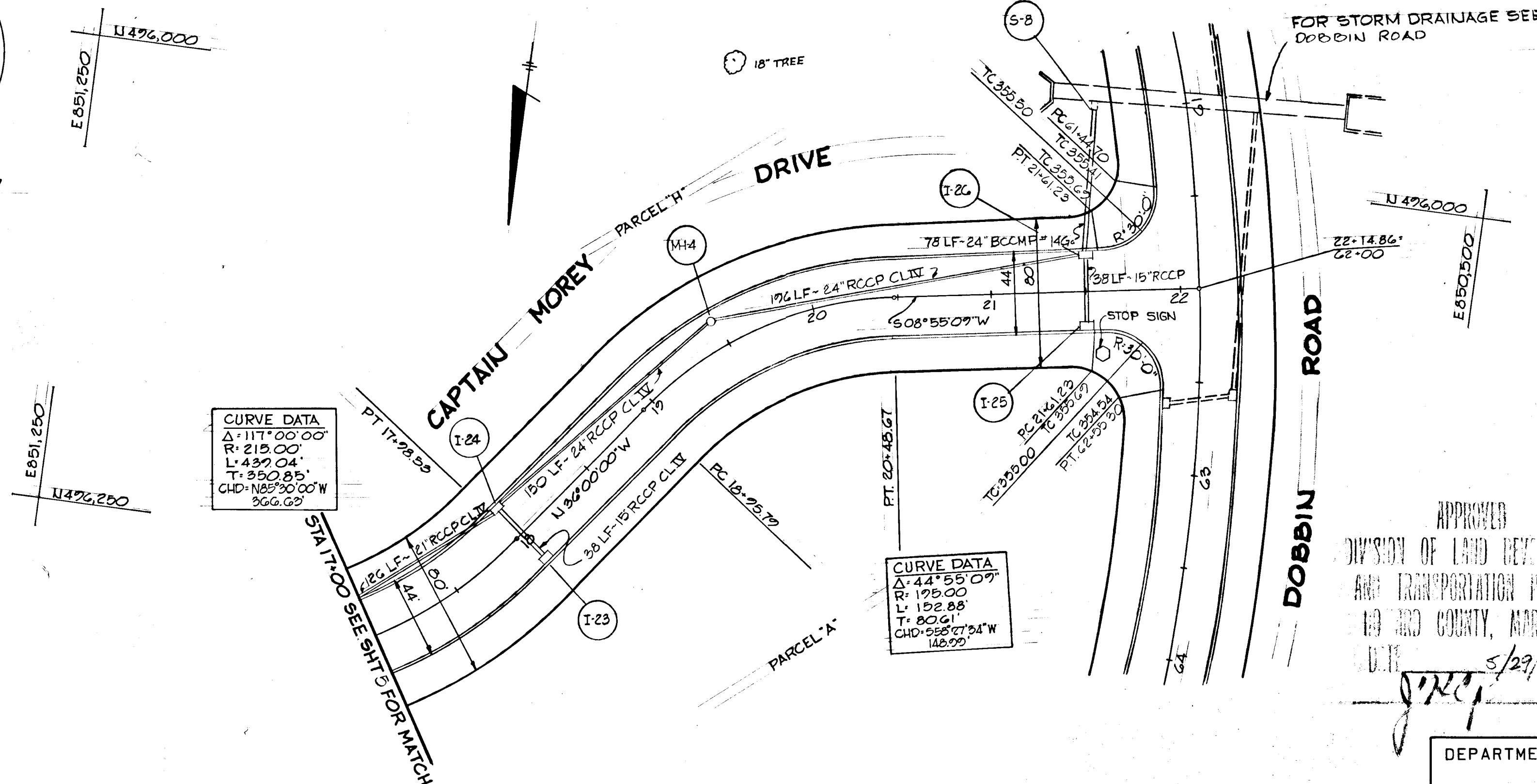
F-73-76 C



REF PT 17+28.53 REF PC 18+25.79 REF PT 20+48.67

PLAN
SCALE: 1" = 50'

BN*60 ELEV: 354.926
SPIKE ROOT 2'
BLACKCHERRY TREE
230' RT STA 60+55 DOBBIN RD



CURVE DATA
Δ: 111° 00' 00"
R: 215.00'
L: 439.04'
T: 350.85'
CHD: N85° 30' 00" W
366.62'

CURVE DATA
Δ: 44° 55' 09"
R: 178.00'
L: 102.88'
CHD: S58° 07' 34" W
142.99'

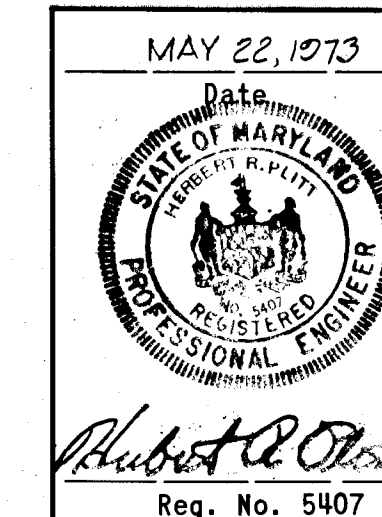
STRUCTURE SCHEDULE						
NO.	TYPE	LOCATION	INV. IN	INV. OUT	T.C.P. ELEV.	REMARKS
I-23	DBL. 'S' COMB.	STA. 18+00 - 22' RT.	—	358.97	362.80	HO. CO. DWG. D-99 - PG. 154
I-24	DBL. 'S' COMB.	STA. 18+00 - 22' LT.	357.2	356.2	362.80	HO. CO. DWG. D-99 - PG. 154
MH-4	STD. MANHOLE	STA. 19+50 - 15' LT.	353.2	353.6	359.88	HO. CO. DWG. D-103 - PG. 158
I-25	DBL. 'S' COMB.	STA. 21+50 - 22' RT.	—	351.4	355.93	HO. CO. DWG. D-99 - PG. 154
I-26	DBL. 'S' COMB.	STA. 21+50 - 22' LT.	351.7	350.7	355.77	HO. CO. DWG. D-99 - PG. 154

NOTE: OFFSET DIMENSIONS TO INLETS ARE TO BACK OF CURB.

LEGEND

- EXISTING GROUND 65' RT. OF ♣
- - - EXISTING GROUND 65' LT. OF ♣
- EXISTING GROUND @ ♣
- FINISHED GRADE

APPROVED
DIVISION OF LAND DEVELOPMENT
AND TRANSPORTATION PLANNING
1980 COUNTY, MARYLAND
DATE 5/23/73
J.M.P.



GREEN ASSOCIATES, INC.
CONSULTING ENGINEERS
TOWSON, MARYLAND

Rev. Date: Rev. No.: Revision Description:

COLUMBIA
MARYLAND
6TH ELECTION DISTRICT HOWARD COUNTY
HOWARD RESEARCH AND DEVELOPMENT CORP.

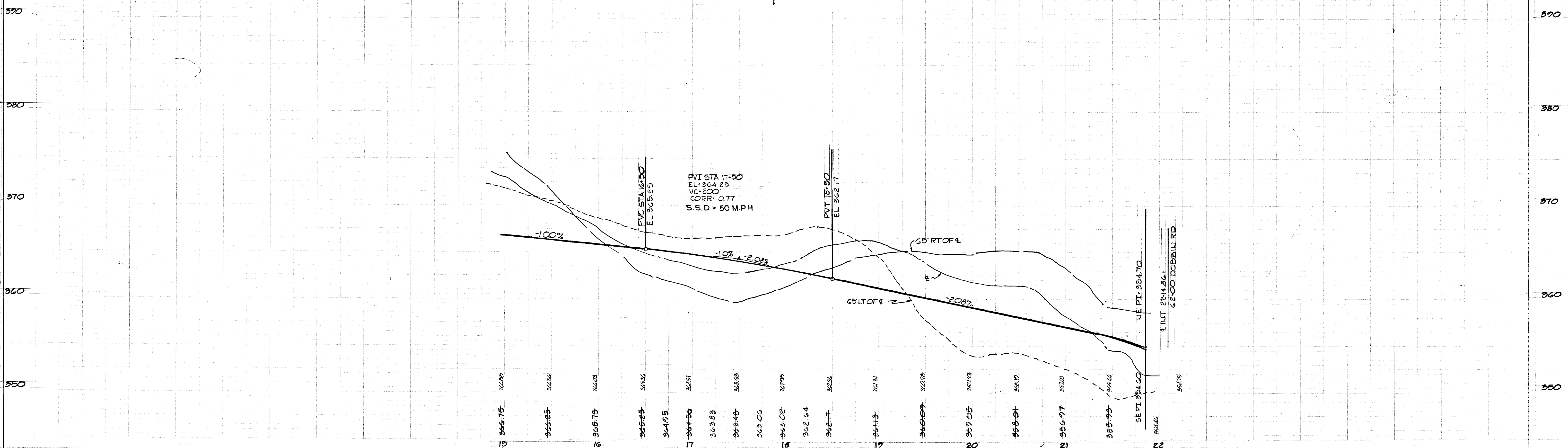
PROJECT AREA: COLUMBIA AUTO PARK SECTION 1 AREA 1

PROJECT SITE: STA. 17+00 TO STA. 22+14.86

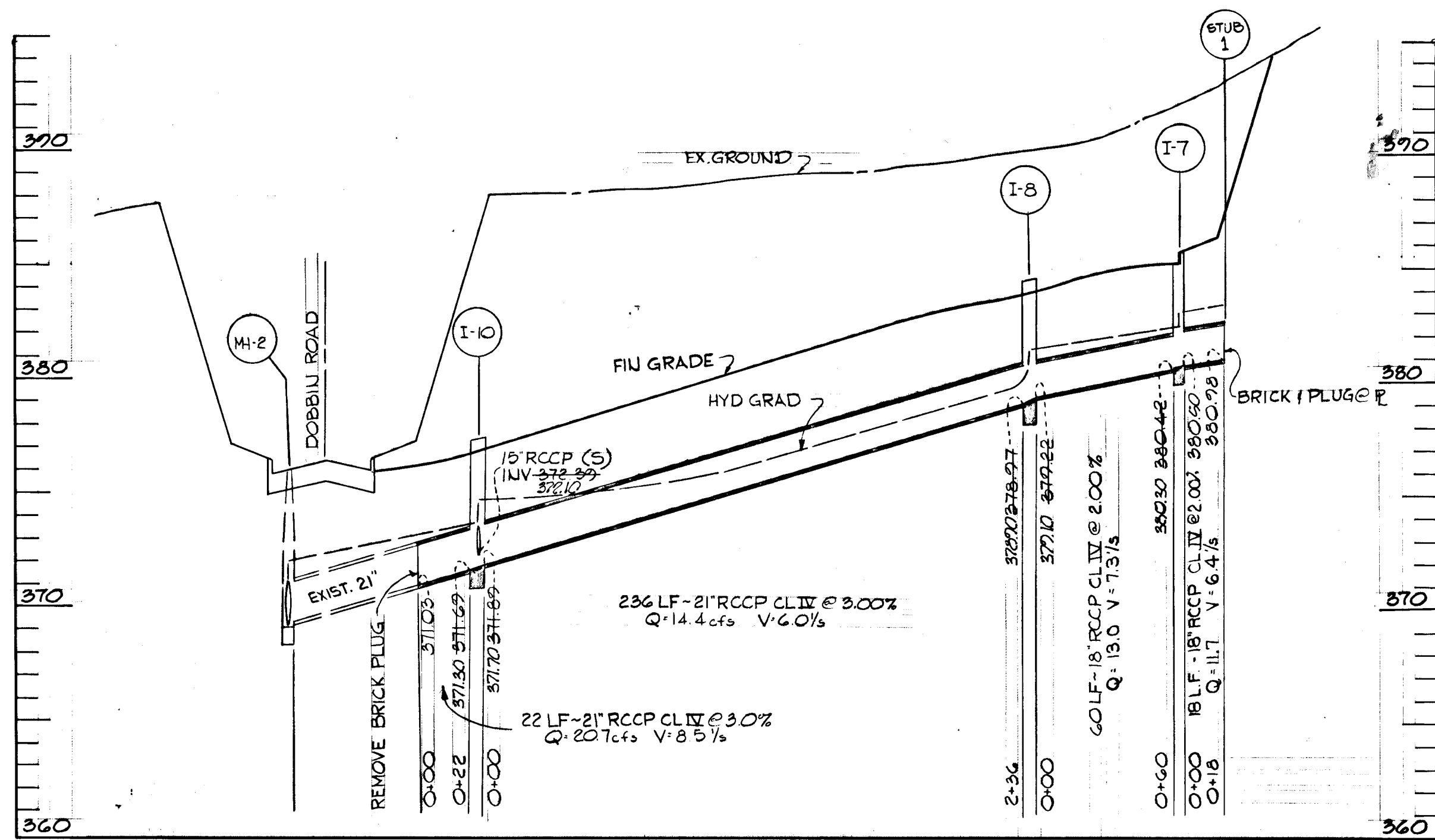
Des. By: F.T. & K.L. Scale: 1" = 50' Draw. No.: 6 OF 7
 Dir. By: J.D. Date: MAY 22, 1973 C.C.F. No.:
 Chk. By: J.T.J. Approved:

DEPARTMENT OF PUBLIC WORKS
W.P. [Signature] 5-20-73
CHIEF, BUREAU OF HIGHWAYS DATE
OFFICE OF PLANNING AND ZONING
CHIEF, DIVISION OF LAND DEVELOPMENT AND TRANSPORTATION PLANNING DATE

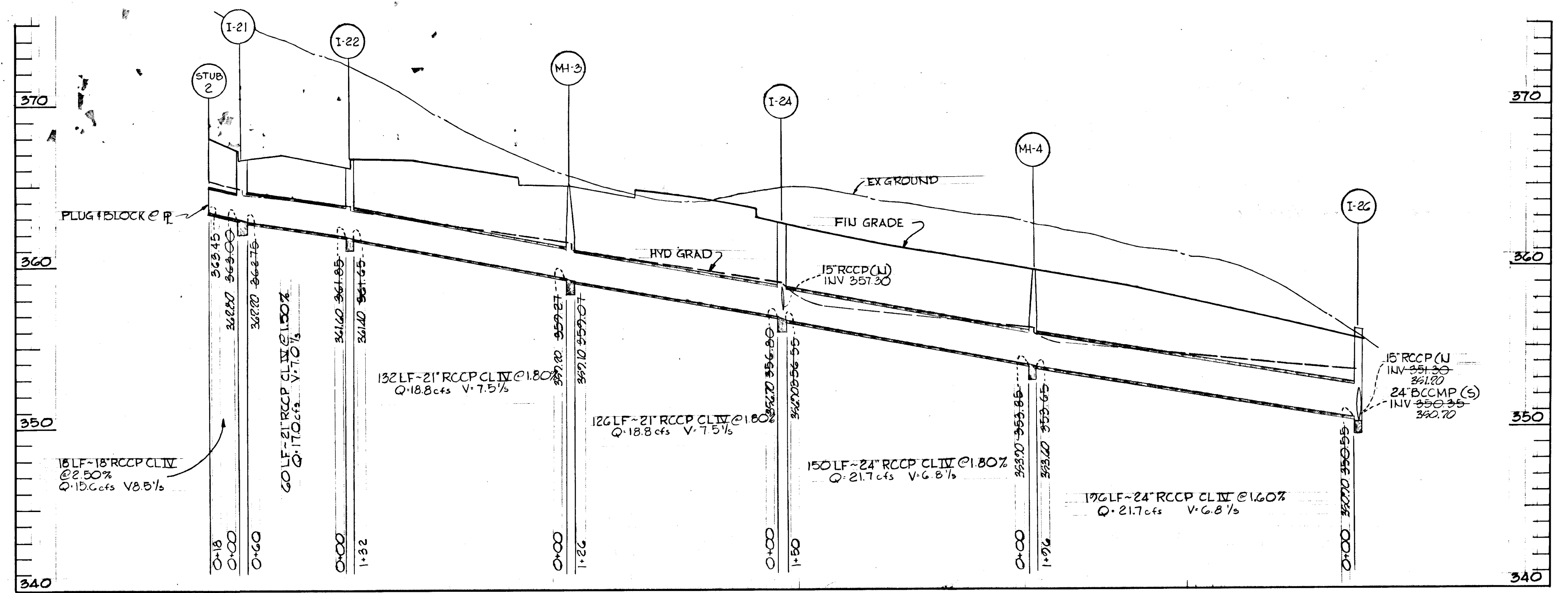
PROFILE
SCALE: 1" = 5' VERT
1" = 50' HORZ



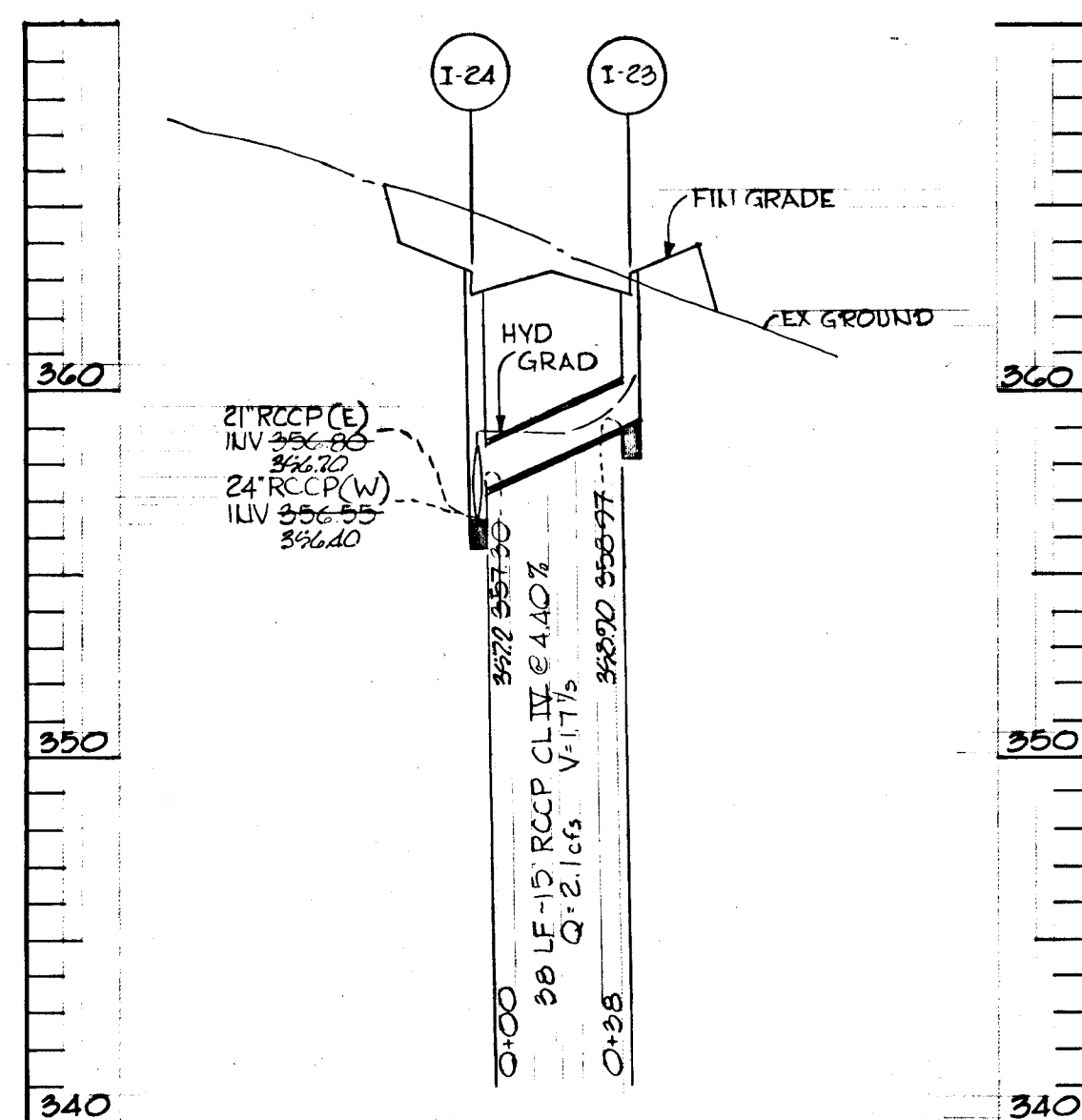
14-6217
5-172



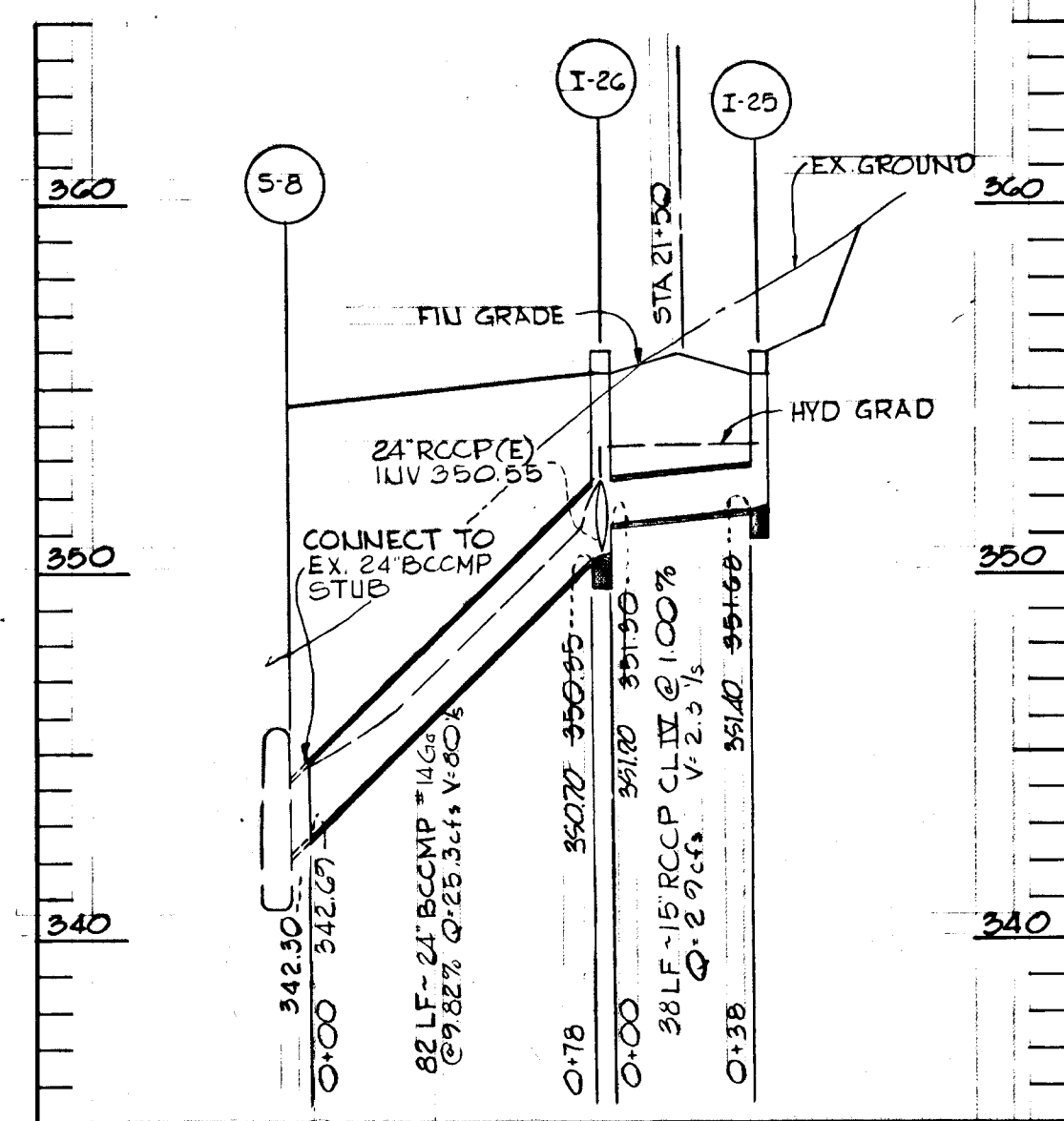
FOR PLAN SEE SHEET 4



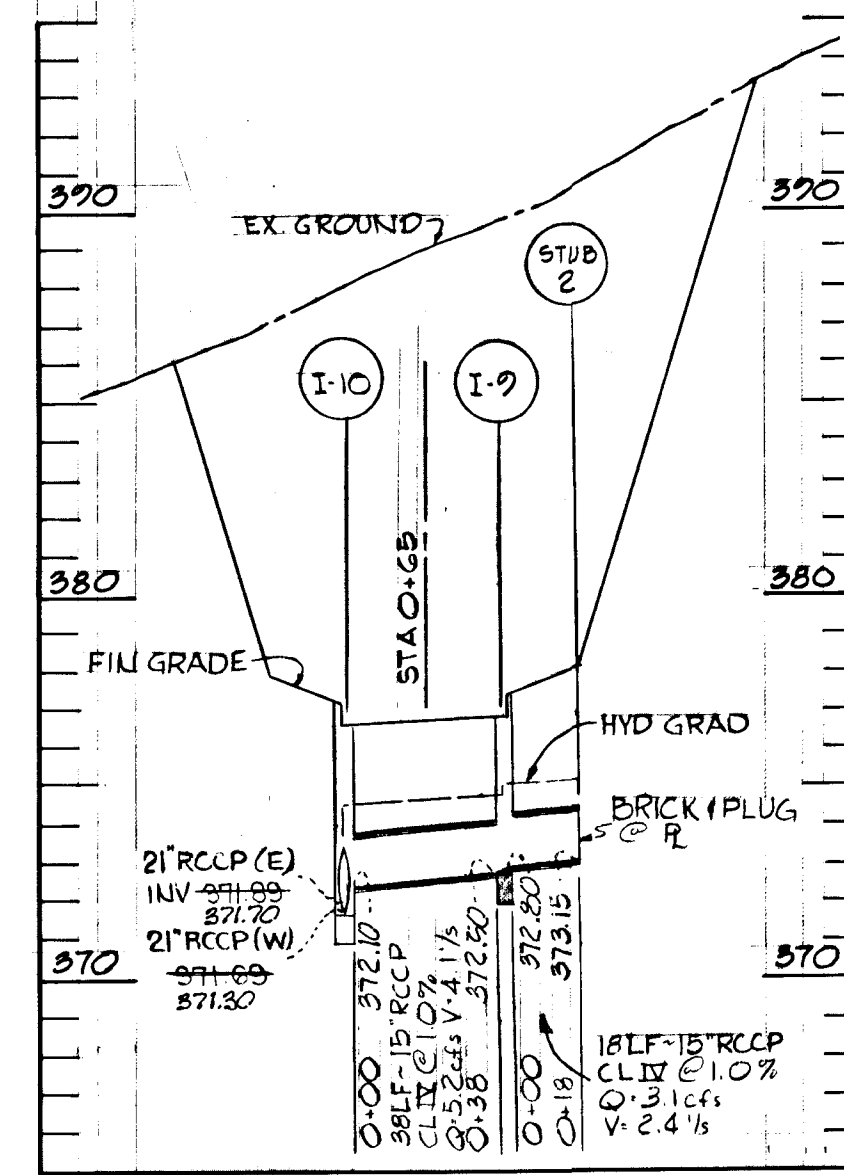
FOR PLAN SEE SHEET 546



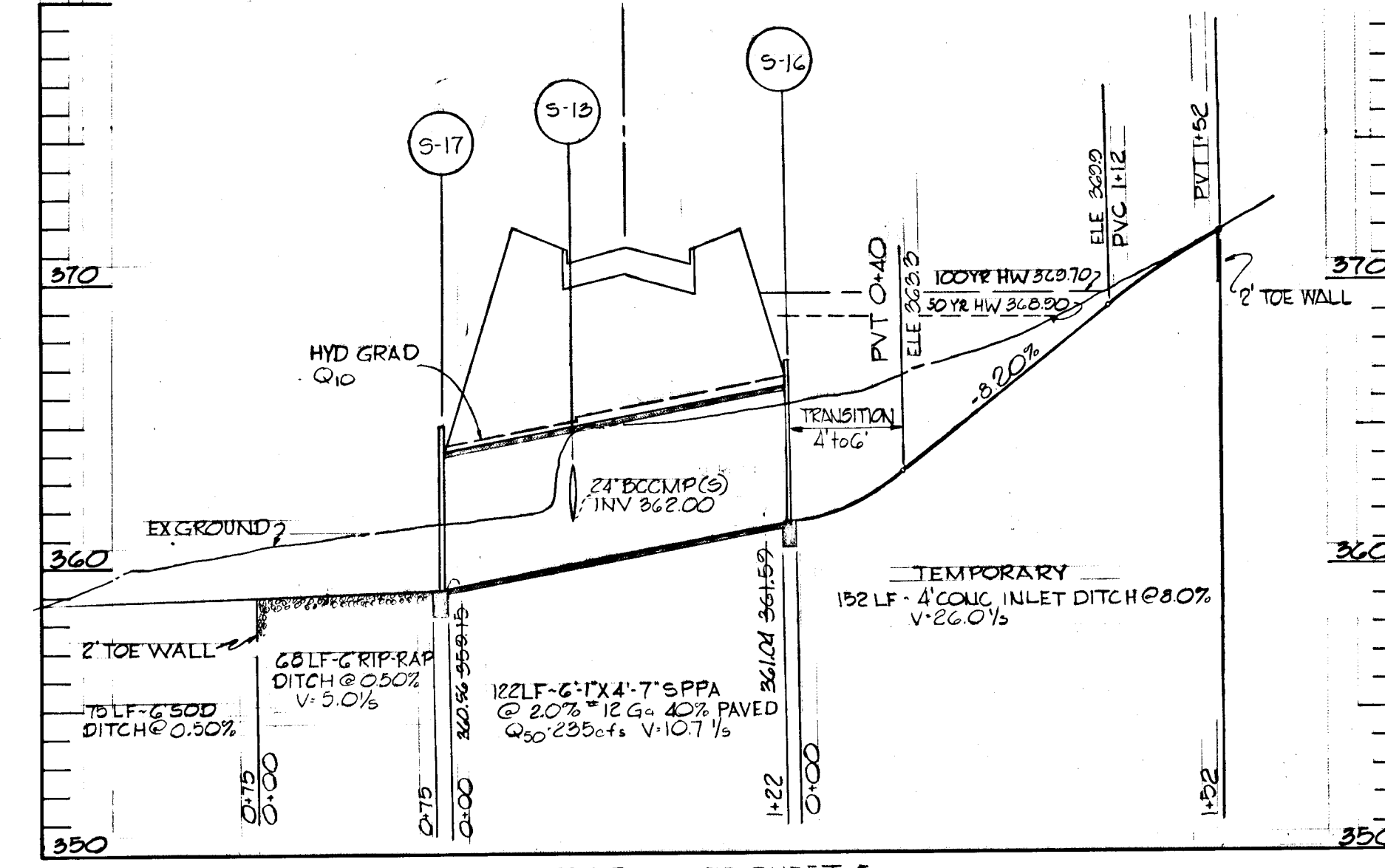
FOR PLAN SEE SHEET 6



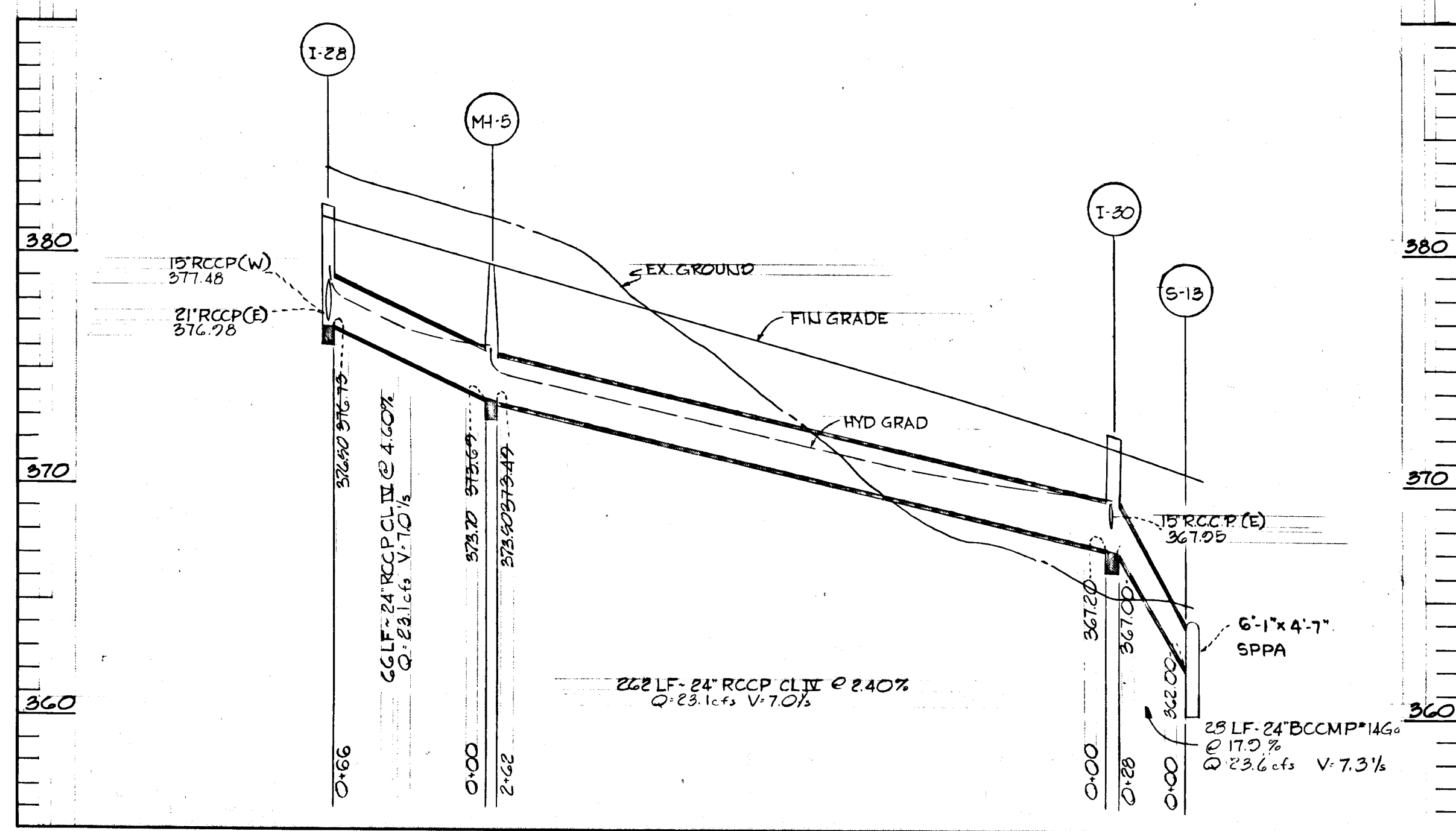
FOR PLAN SEE SHEET 6



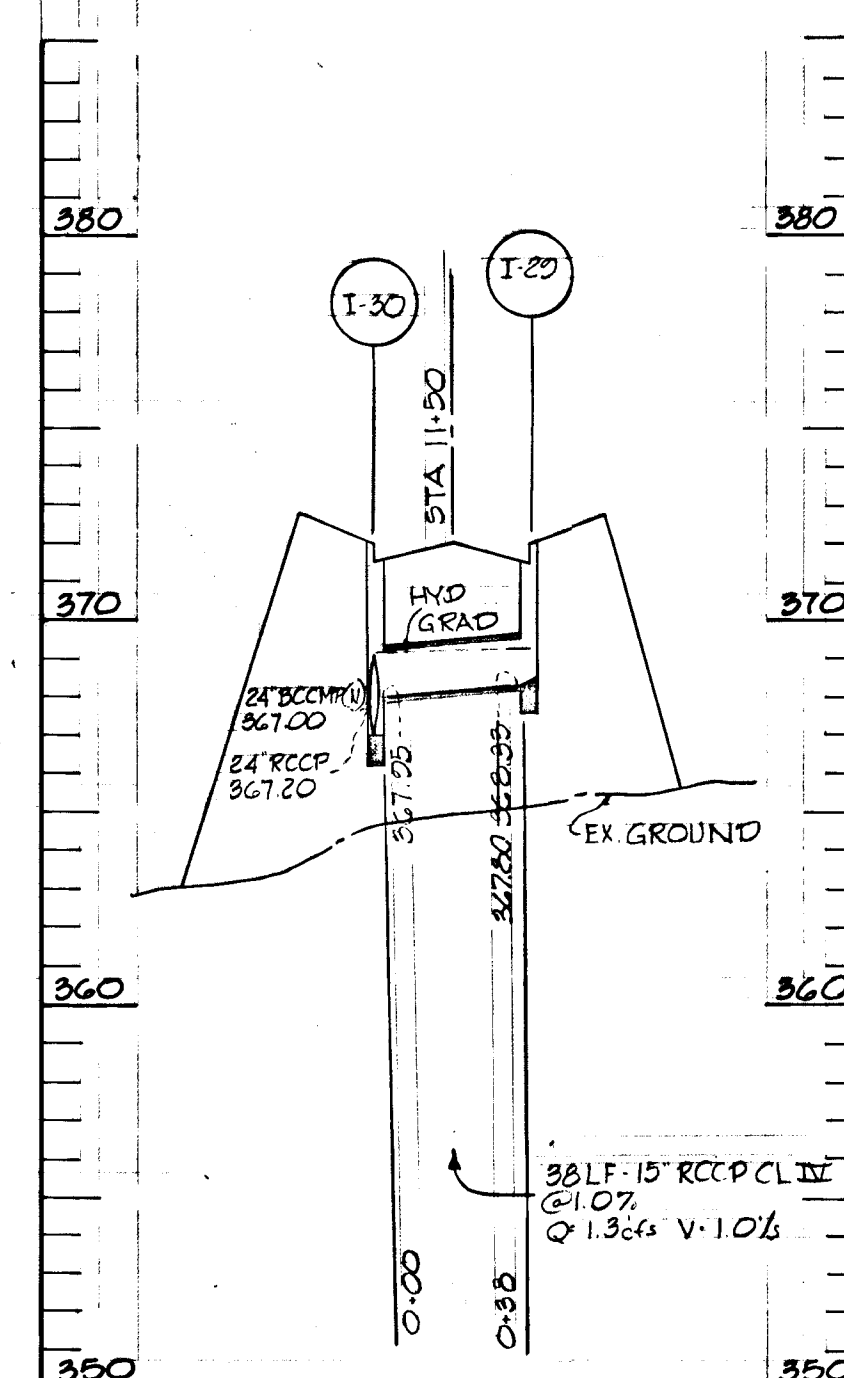
FOR PLAN SEE SHEET 4



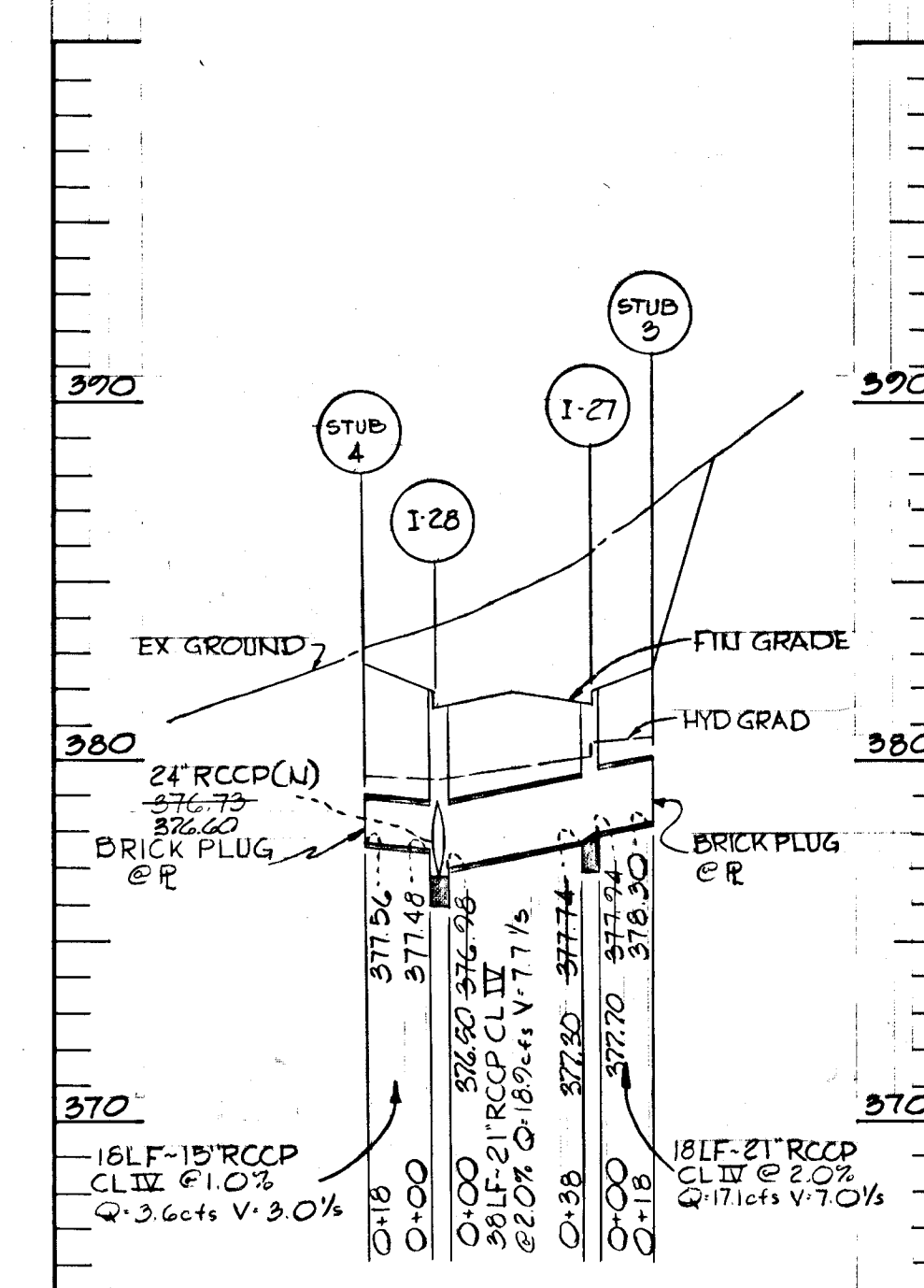
FOR PLAN SEE SHEET 5



FOR PLAN SEE SHEET 5



FOR PLAN SEE SHEET 5



FOR PLAN SEE SHEET 4

APPROVED
DIVISION OF LAND DEVELOPMENT
AND TRANSPORTATION PLANNING
MAY 29 1973
J.M.C.

MAY 22, 1973
Date
Reg. No. 5407

DEPARTMENT OF PUBLIC WORKS
5/30/73
CHIEF, BUREAU OF HIGHWAYS
OFFICE OF PLANNING AND ZONING
CHIEF, DIVISION OF LAND DEVELOPMENT AND TRANSPORTATION PLANNING
DATE
GREEN ASSOCIATES, INC.
CONSULTING ENGINEERS
TOWSON, MARYLAND
Rev Date Rev No Revision Description
COLUMBIA MARYLAND
ELECTION DISTRICT HOWARD COUNTY
HOWARD RESEARCH AND DEVELOPMENT CORP.
COLUMBIA, MARYLAND
PROJECT AREA COLUMBIA AUTO PARK SECTION 1 AREA 1
PROJECT TITLE STORM DRAIN PROFILES
Drawn By F.T. & K.L. Scale 1"=5' VERT 1"=50' HORIZ
Date MAY 22, 1973
By J.D.
Checked By J.T.J.
Approved

1137

7-7

STABILIZATION NOTES

I. TEMPORARY COVER ON SEDIMENT CONTROL STRUCTURES SHALL BE CARRIED OUT AS FOLLOWS:

A. SEEDBED PREPARATION

1. APPLY 2,000 POUNDS PER ACRE OR 46 POUNDS PER 1,000 SQ. FT. OF PULVERIZED DOLOMITIC LIMESTONE AND 50 TO 800 POUNDS PER ACRE OR 11.5 TO 18.4 POUNDS PER 1,000 SQ. FT. OF 10-10-10 OR EQUIVALENT FERTILIZER. IF SOILS ARE REASONABLY UNIFORM, LIME AND FERTILIZER ACCORDING TO SOIL TEST.
2. HARROW OR DISC LIME AND FERTILIZER INTO THE SOIL TO A DEPTH OF AT LEAST 3 INCHES. CONTINUE TILLAGE UNTIL A REASONABLY UNIFORM, FINE FIRM SEEDBED HAS BEEN PREPARED. ON SLOPING LAND, THE FINAL HARROWING OR DISCING OPERATION SHOULD BE ON THE CONTOUR.

B. SEEDING - APPLY SEED (ANNUAL RYEGRASS @ 35#/AC.) UNIFORMLY WITH A CYCLONE SEEDER, DRILL, CULTIPACKER SEEDER OR HYDRO-SEEDER (SLURRY INCLUDES SEED AND FERTILIZER) PREFERABLY ON A FIRM, MOIST SEEDBED. NORMAL COVERAGE IS FROM 1/4 TO 1/2 INCH.

C. MULCHING

1. MULCH MATERIALS SHOULD BE UNWEATHERED, UNCHOPPED, SMALL GRAIN WOOD FREE STRAW (PREFERABLY WHEAT) AT THE RATE OF 1-1/2 TO 2 TONS PER ACRE OR 70 TO 90 POUNDS PER THOUSAND SQ. FT.
2. SPREAD UNIFORMLY BY HAND OR MECHANICALLY SO THAT APPROXIMATELY 75% OF THE SOIL SURFACE WILL BE COVERED. FOR UNIFORM DISTRIBUTION OF HAND SPREAD MULCH, DIVIDE AREA INTO APPROXIMATELY 1,000 SQUARE FEET SECTIONS AND PLACE 3 BALES, 100 LBS., OF MULCH FOR DISTRIBUTION WITHIN EACH SECTION.
3. MULCH ANCHORING SHOULD BE ACCOMPLISHED IMMEDIATELY AFTER PLACEMENT TO MINIMIZE LOSS BY WIND OR WATER. THIS MAY BE DONE BY ONE OF THE FOLLOWING METHODS, DEPENDING UPON THE SIZE OF THE AREA, STEEPNESS OF SLOPES AND COSTS. ON SLOPING LAND, PRACTICE B AND C BELOW SHOULD BE DONE ON THE CONTOUR WHEREVER POSSIBLE.
 - (A) MULCH NETTINGS - STAPLE LIGHT WEIGHT, JUTE, COTTON OR PLASTIC NETTINGS TO THE SOIL SURFACE ACCORDING TO MANUFACTURER'S RECOMMENDATIONS. NETTING IS USUALLY AVAILABLE IN ROLLS 4 FEET WIDE AND UP TO 300 FEET LONG.
 - (B) SLIT - WITH A SQUARE POINTED SPADE CUT MULCH INTO THE SURFACE SOIL IN ROWS 18 INCHES APART.
 - (C) MULCH ANCHORING TOOL - A TRACTOR DRAWN IMPLEMENT ESPECIALLY DESIGNED TO PUNCH AND ANCHOR MULCH INTO THE SURFACE SOIL. THIS PRACTICE AFFORDS MAXIMUM EROSION CONTROL, BUT ITS USE IS LIMITED TO THOSE SLOPES UPON WHICH THE TRACTOR CAN OPERATE SAFELY. TOOL PENETRATION SHOULD BE ABOUT 2 INCHES.
 - (D) ASPHALT MULCH TIE-DOWN

LIQUID ASPHALT - RAPID CURING (RC-70, RC-250 OR RC-800) OR MEDIUM CURING (MC-250 OR MC-800) APPLY .1 GAL/SQ. YD.

II. PERMANENT SEEDING ON ALL GRASSED AREA TO BE CARRIED OUT AS FOLLOWS:

A. SEEDBED PREPARATION

1. APPLY 2,000 POUNDS PER ACRE OR 46 POUNDS PER 1,000 SQ. FT. OF PULVERIZED DOLOMITIC LIMESTONE, 500 TO 1,000 POUNDS PER ACRE OR 11.5 TO 23 POUNDS PER 1,000 SQ. FT. OR 0-20-0, SUPERSHOSPHATE, OR ITS EQUIVALENT AND 1,000 SQ. FT. OF 10-10-10 FERTILIZER OR ITS EQUIVALENT.
- HARROW OR DISC LIME AND FERTILIZER INTO THE SOIL TO A DEPTH OF 2-3 INCHES. CONTINUE TILLAGE UNTIL A REASONABLY UNIFORM FINE, FIRM SEEDBED HAS BEEN PREPARED.

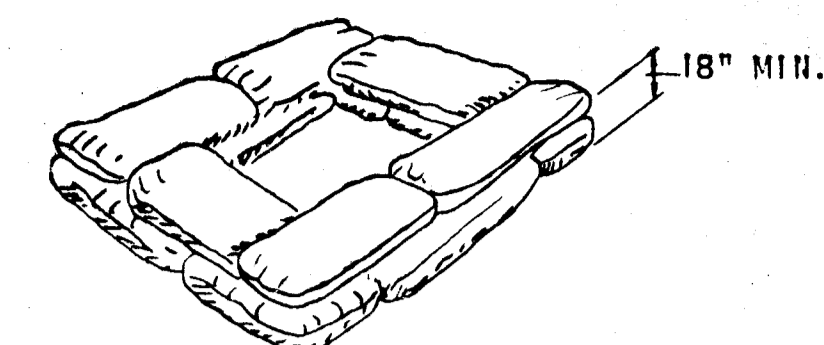
B. SEEDING

1. APPLY SEED (60% KENTUCKY 31 TALL FESCUE AND 40% KENTUCKY BLUEGRASS) UNIFORMLY WITH A CYCLONE SEEDER DRILL, CULTIPACKER SEEDER, C7 HYDROSEEDER (SLURRY INCLUDES SEED AND FERTILIZER) ON A FIRM SEEDBED AT A RATE OF 200 # AC.

C. MULCHING - SEE I-C ABOVE.

GENERAL SEDIMENT CONTROL NOTES

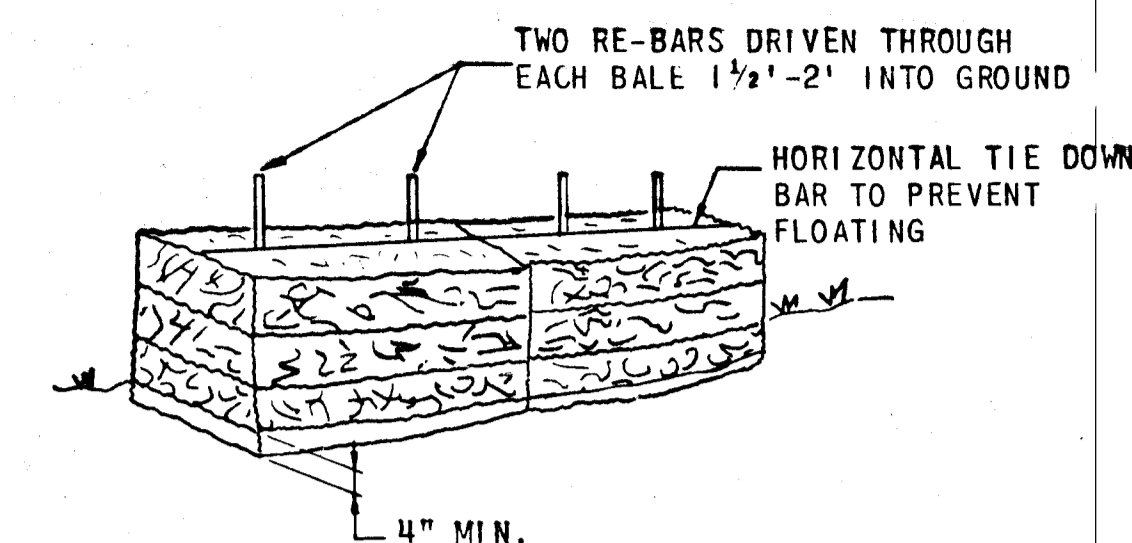
1. IMMEDIATELY FOLLOWING THE START OF GRADING OPERATIONS SEDIMENT BASINS WITH ROCK BERMS WILL BE CONSTRUCTED IN LOCATION AS SHOWN ON PLAN SH. 3.
2. ALL STRUCTURAL SEDIMENT CONTROL MEASURES ARE TO REMAIN IN PLACE UNTIL PERMISSION FOR THEIR REMOVAL HAS BEEN OBTAINED FROM THE HOWARD SOIL CONSERVATION DISTRICT.
3. NOTIFY THE HOWARD SOIL CONSERVATION DISTRICT AT LEAST 24 HOURS BEFORE STARTING ANY WORK. PHONE 465-3180 OR 464-5000, EXT. 328.
4. SEDIMENT TRAPPED IN BASINS OR OTHER TRAPS WILL BE REMOVED UPON REACHING A SPECIFIED DEPTH AS SHOWN, AS A PART OF NORMAL MAINTENANCE PROCEDURE.
5. CONSTRUCTED BERMS, DIKES, DAMS, ETC. WILL BE COMPACTED BY SEVERAL PASSES WITH THE CONSTRUCTING EQUIPMENT (BULLDOZER, BACKHOE OR OTHER HEAVY EQUIPMENT OR BY USE OF A SUITABLE ROLLER).
6. ALL FILL MATERIAL SHALL BE FREE OF DECOMPOSABLE MATERIAL.
7. ALL STORM DRAINAGE INLETS ARE TO BE TEMPORARILY CAPPED TO PREVENT ENTRY OF SEDIMENT CARRYING RUN OFF WATER UNTIL VEGETATIVE MEASURES AND/OR PAVING IS ESTABLISHED AS PLANNED.
8. DIVERSION BERMS WILL BE REBUILT AS THE FILLING OPERATION PROCEEDS IN LIFTS. SILT TRAPS, SWALES AND BERMS WILL BE RETAINED AFTER FINAL LIFT.
9. DISTURBED AREAS ARE TO BE MAINTAINED IN A ROUGH GRADED CONDITION UNTIL PROPER WEATHER CONDITIONS WILL PERMIT THE ESTABLISHMENT OF PERMANENT VEGETATIVE COVER.
10. NO SLOPES SHALL BE STEEPER THAN 1' VERTICAL ON 3' HORIZONTAL (3:1)
11. 18" FLEXIBLE TUBE DOWN DRAIN AND PANS AS MANUFACTURED BY "RELIANCE PLASTICS & CHEMICAL COMPANY" OR AS APPROVED EQUAL.
12. ON-SITE INSPECTION AND MAINTENANCE OF ALL SEDIMENT CONTROL MEASURES, INCLUDING CLEAN OUT OF SEDIMENT TRAPS, BASINS AND BERMS, AND PROPER ESTABLISHMENT OF ALL PLANNED VEGETATIVE MEASURES WILL BE THE RESPONSIBILITY OF THE DEVELOPER OR HIS REPRESENTATIVE ON THE SITE, ON A CONTINUING, DAY TO DAY BASIS.



NOTE: FORM 18" HIGH DIKE OF SAND BAGS AROUND INLET. STAGGER SAND BAGS.

SAND BAG DETAIL

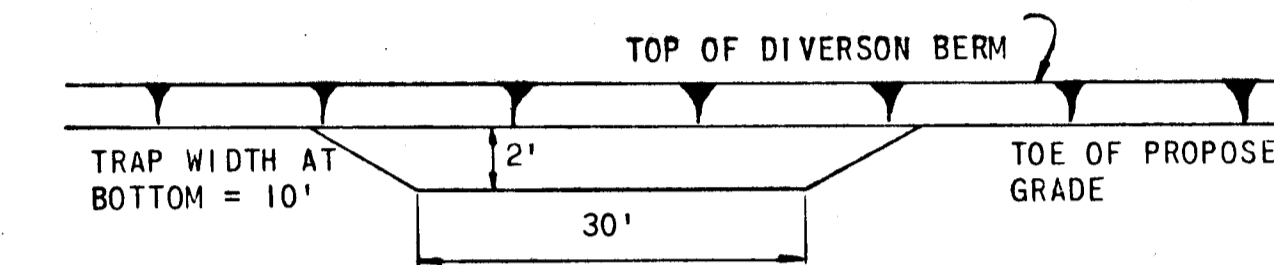
NO SCALE



NOTE: BALES MAY BE WIRED TO POULTRY OR SNOW FENCE

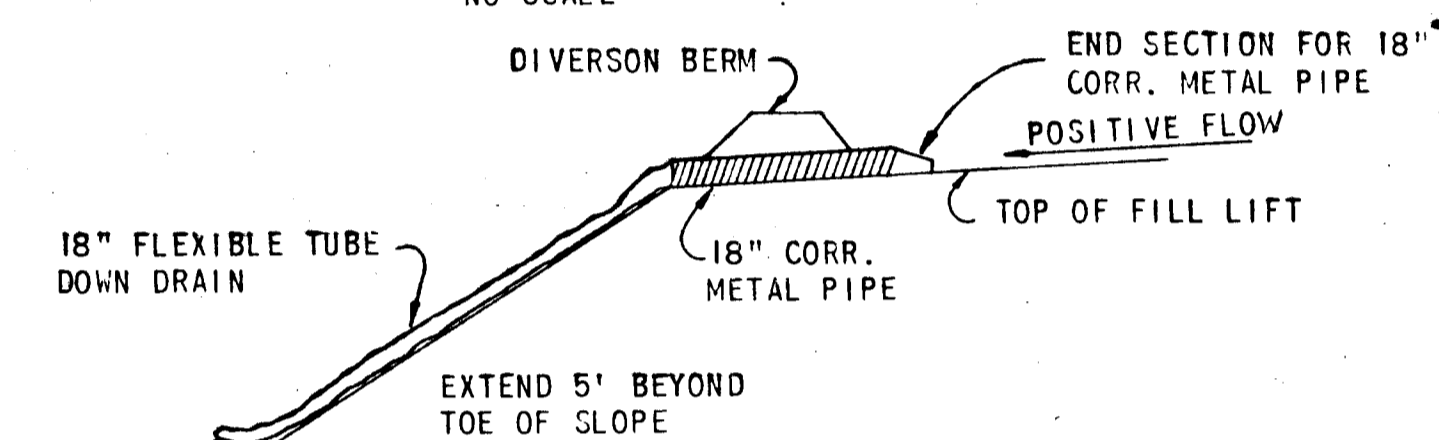
TYPICAL STRAW BALE DETAIL

NO SCALE



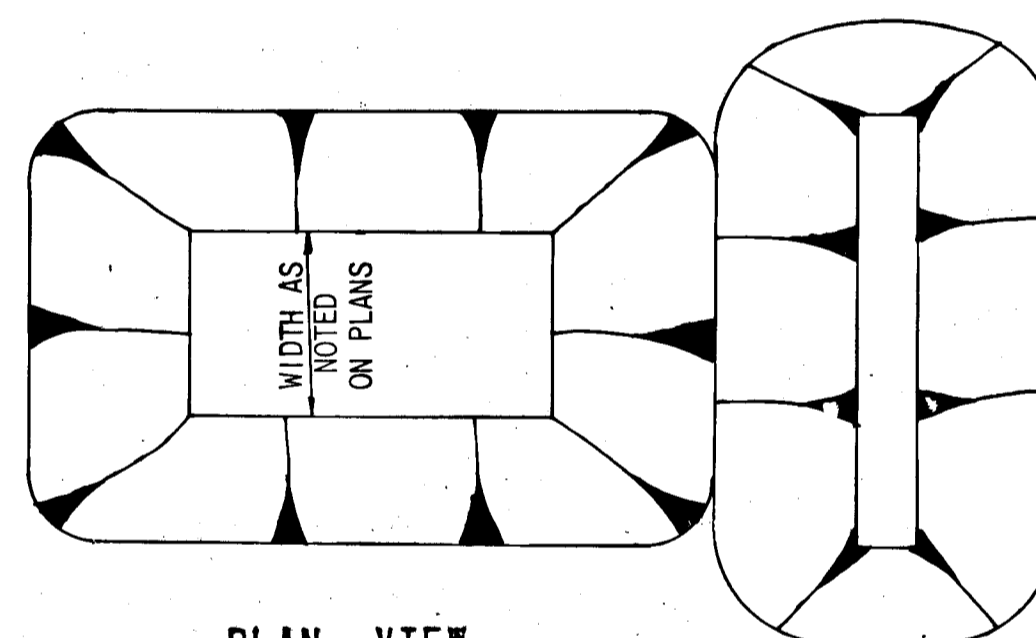
SILT TRAP SECTION

NO SCALE



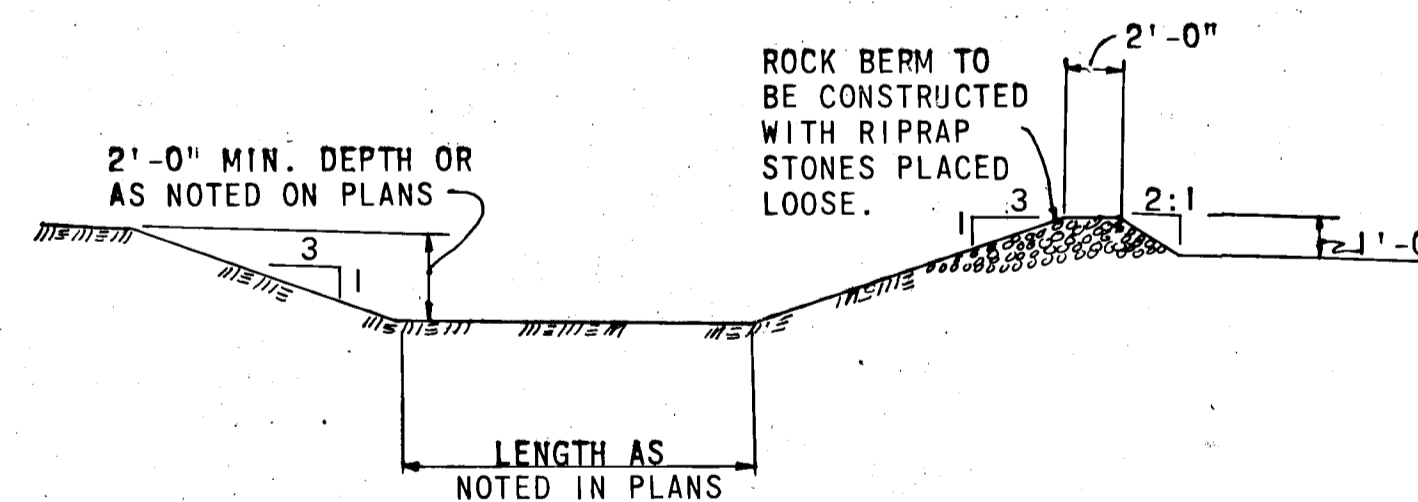
FLEXIBLE TUBE DOWN DRAIN

NO SCALE

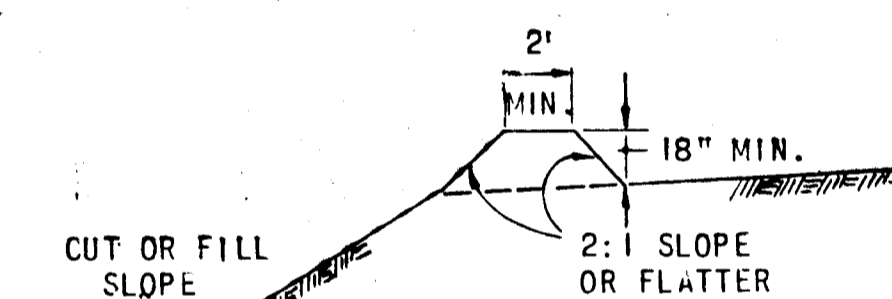


PLAN VIEW
SEDIMENT BASIN WITH ROCK BASIN

NO SCALE

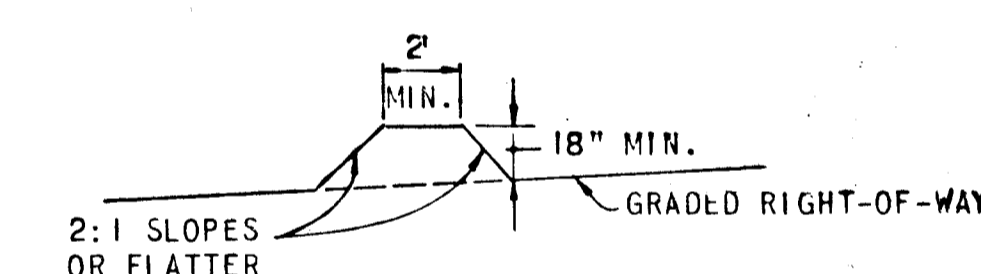


CROSS SECTION



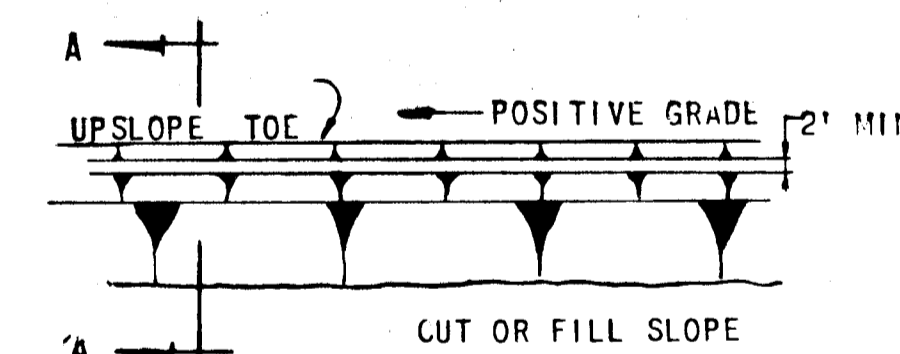
SECTION A-A

NO SCALE



SECTION A-A

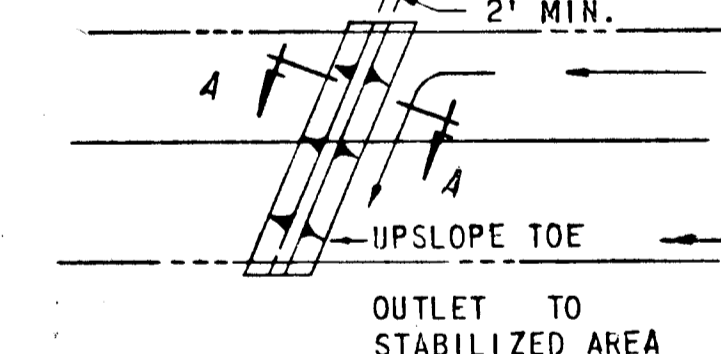
NO SCALE



PLAN VIEW

DIVERSION BERM

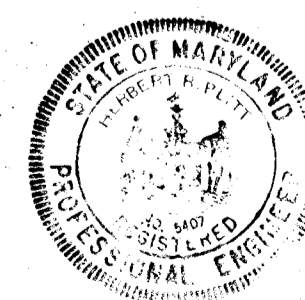
NO SCALE



PLAN VIEW

INTERCEPTOR BERM

NO SCALE



ENGINEER'S CERTIFICATE

I certify that this plan for Erosion and Sediment Control represents a practical and workable plan based on my personal knowledge of the site conditions and that it was prepared in accordance with the requirements of the Howard Soil Conservation District.

Signature of Engineer

Date

DEVELOPER'S CERTIFICATE

I hereby certify that all development and/or construction will be done according to his plan of development and plan for Erosion and Sediment Control, and I also authorize periodic on-site inspection by the Howard Soil Conservation District or their authorized agents, as are deemed necessary.

Deviation from this plan will not be made unless authorized by the Howard Soil Conservation District.

Signature of Developer

Date

Reviewed for Howard S.C.D. and meets Technical Requirements

Signature: Charles E. Melly Date: 5/20/73

U.S. Soil Conservation Service

This Development Plan is approved for Soil Erosion and Sediment Control by the Howard Soil Conservation District.

Signature: Date: 5/20/73

Approved Howard S.C.D.

DIVISION OF DEVELOPMENT AND TRANSPORTATION PLANNING HOWARD COUNTY, MARYLAND

5/29/73

GREEN ASSOCIATES, INC.

CONSULTING ENGINEERS
TOWSON MARYLAND

Rev Date	Rev No	Revision Description
COLUMBIA MARYLAND		
6TH ELECTION DISTRICT HOWARD COUNTY		
OWNER AND DEVELOPER HOWARD RESEARCH AND DEVELOPMENT CORP. COLUMBIA, MARYLAND		
PROJECT AREA	COLUMBIA AUTO PARK SECTION 1 AREA 1	
PROJECT TITLE	SEDIMENT CONTROL DETAILS	
Des. By	F.T. & K.L.	Scale AS SHOWN Dwg. No. 1 OF 1
Drn. By	J.D.	Date MAY 22, 1973 C.C.F. No.
Chk. By	J.T.J.	Approved