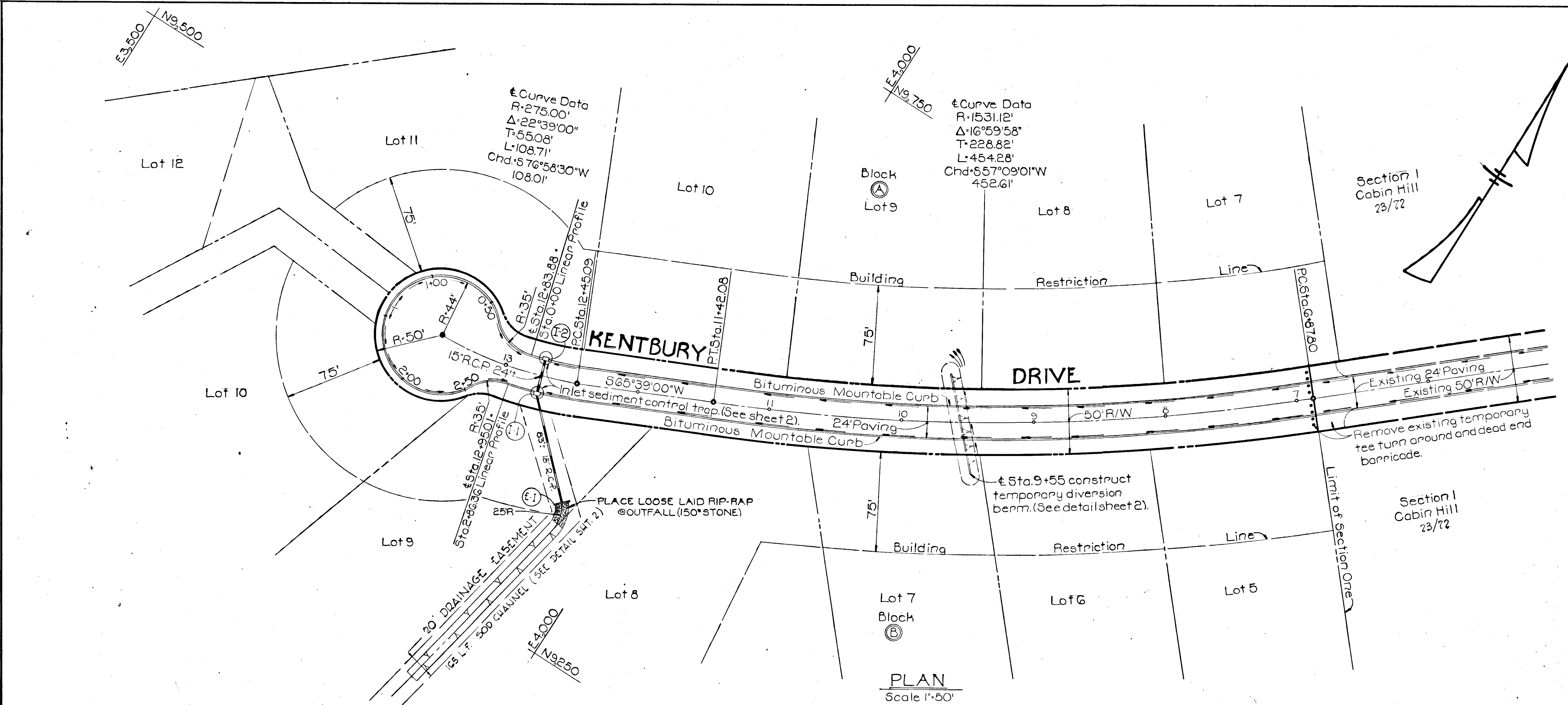
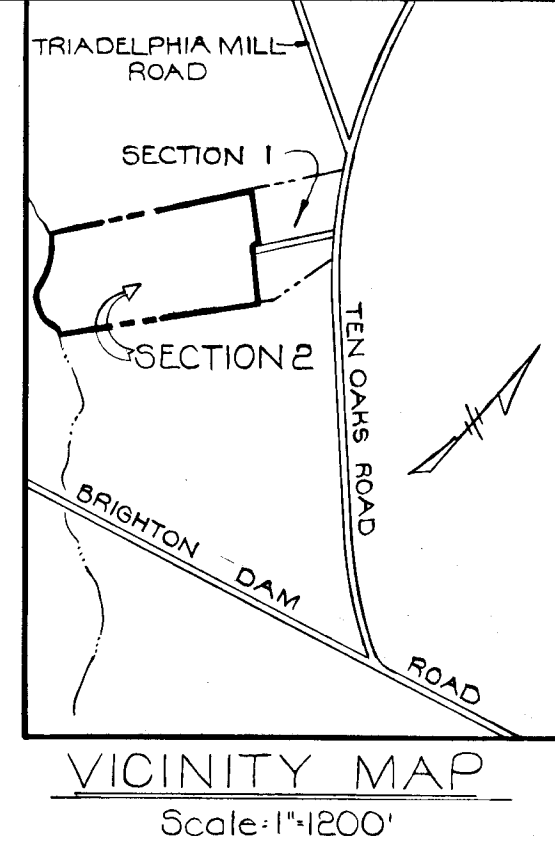


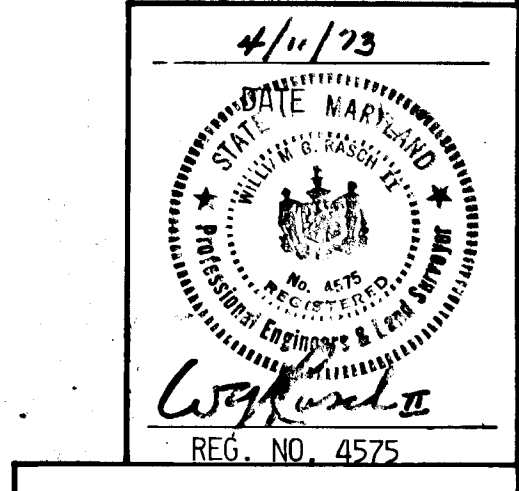
DATE	
BY	
NO.	
REVISIONS	
1. DATE	
2. BY	
3. NO.	
4. DESCRIPTION	
5. DATE	
6. BY	
7. NO.	
8. DESCRIPTION	
9. DATE	
10. BY	
11. NO.	
12. DESCRIPTION	
13. DATE	
14. BY	
15. NO.	
16. DESCRIPTION	
17. DATE	
18. BY	
19. NO.	
20. DESCRIPTION	
21. DATE	
22. BY	
23. NO.	
24. DESCRIPTION	
25. DATE	
26. BY	
27. NO.	
28. DESCRIPTION	
29. DATE	
30. BY	
31. NO.	
32. DESCRIPTION	
33. DATE	
34. BY	
35. NO.	
36. DESCRIPTION	
37. DATE	
38. BY	
39. NO.	
40. DESCRIPTION	
41. DATE	
42. BY	
43. NO.	
44. DESCRIPTION	
45. DATE	
46. BY	
47. NO.	
48. DESCRIPTION	
49. DATE	
50. BY	
51. NO.	
52. DESCRIPTION	
53. DATE	
54. BY	
55. NO.	
56. DESCRIPTION	
57. DATE	
58. BY	
59. NO.	
60. DESCRIPTION	
61. DATE	
62. BY	
63. NO.	
64. DESCRIPTION	
65. DATE	
66. BY	
67. NO.	
68. DESCRIPTION	
69. DATE	
70. BY	
71. NO.	
72. DESCRIPTION	
73. DATE	
74. BY	
75. NO.	
76. DESCRIPTION	
77. DATE	
78. BY	
79. NO.	
80. DESCRIPTION	
81. DATE	
82. BY	
83. NO.	
84. DESCRIPTION	
85. DATE	
86. BY	
87. NO.	
88. DESCRIPTION	
89. DATE	
90. BY	
91. NO.	
92. DESCRIPTION	
93. DATE	
94. BY	
95. NO.	
96. DESCRIPTION	
97. DATE	
98. BY	
99. NO.	
100. DESCRIPTION	



PLAN
Scale 1"=50'



- BENCH MARKS**
ALL ELEVATIONS BASED ON ASSUMED DATUM
- B.M. 1
R.R. SPIKE IN 42" OAK 21' S.W. OF TRAVERSE STA. S-2
ELEV. 300.00
 - B.M. S-1
R.R. SPIKE IN SOUTH EDGE MACADAM - TRAVERSE STA
ELEV. 294.14



DESIGNED BY: C.C. & R.E.B.
DRAFTED BY: C.C.
CHECKED BY: R.B.C.

PURDUM & JESCHKE
CONSULTING ENGINEERS &
LAND SURVEYORS
1023 N. CALVERT STREET
BALTIMORE, MARYLAND 21202

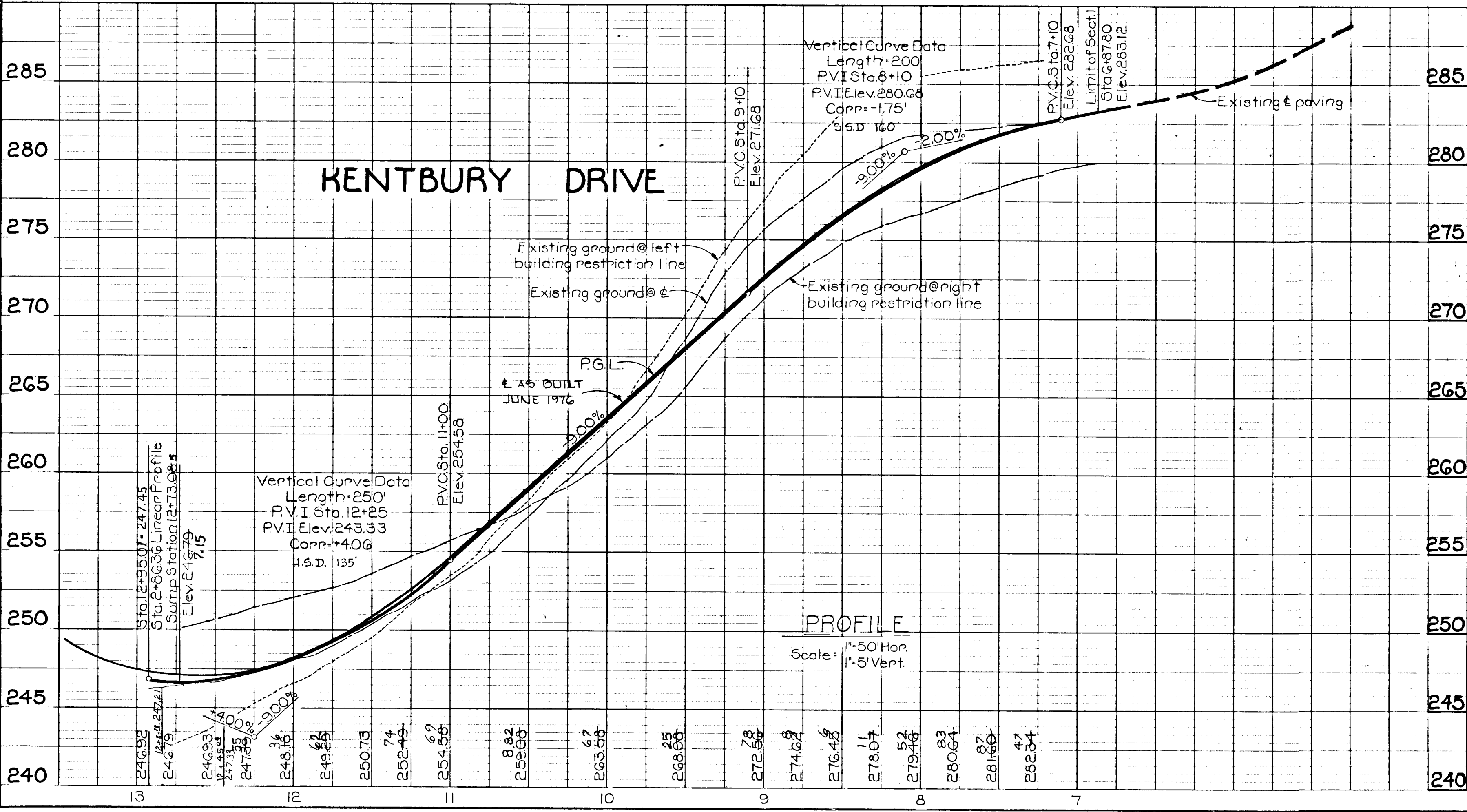
OWNER & DEVELOPER
CABIN HILL CORPORATION
SHARP ROAD
GLENMOOD, MARYLAND 21738

PLAN AND PROFILE
KENTBURY DRIVE
CABIN HILL
SECTION TWO
5TH ELECTION DISTRICT
APRIL 4, 1973
SHEET 1 OF 2
HOWARD COUNTY, MD.
SCALE: AS SHOWN

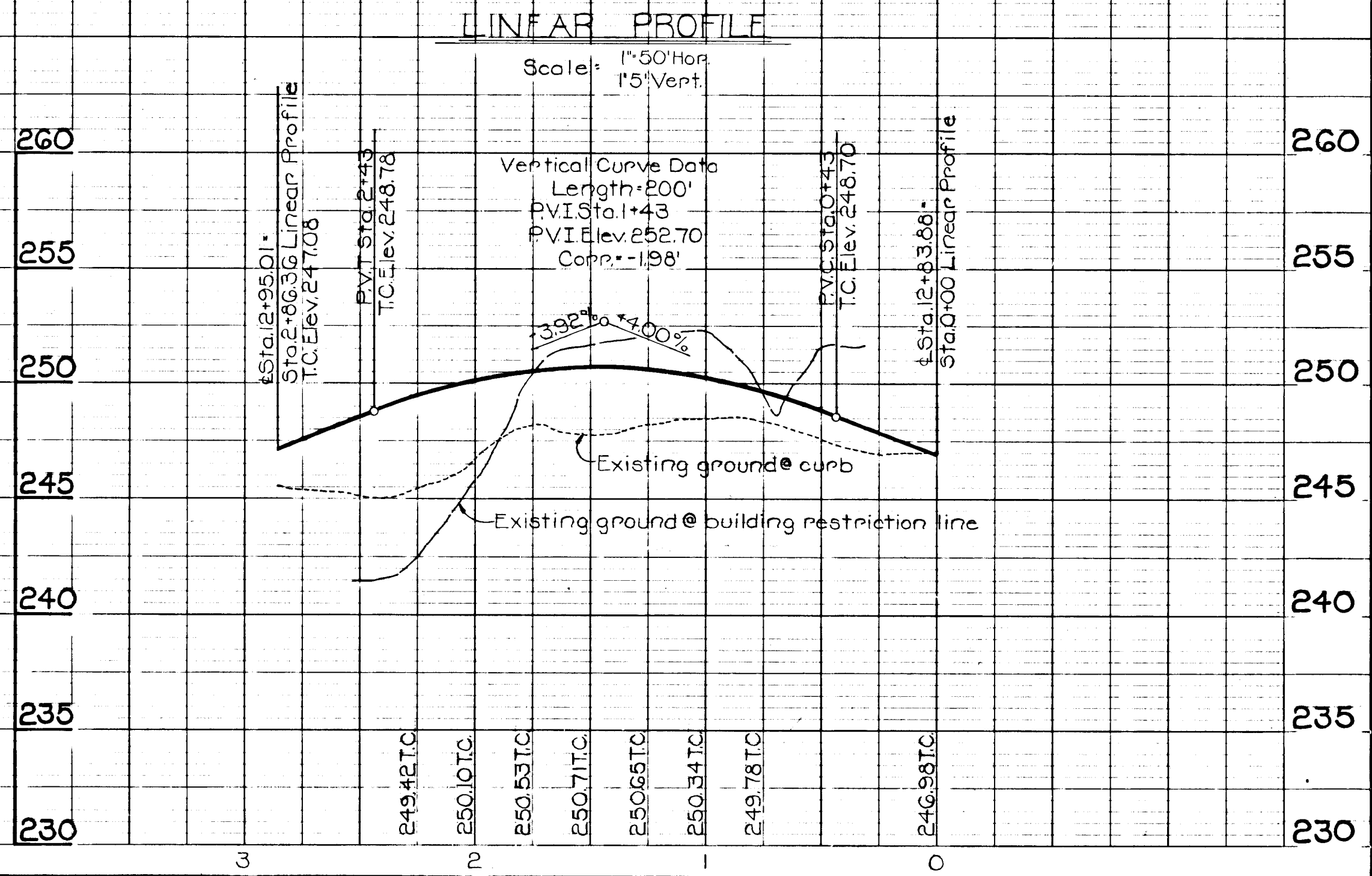
APPROVE: Department of Public Works
W. J. ...
Chief, Bureau of Highways

APPROVED: Office of Planning and Zoning
...
Chief, Division of Land Development and Transportation Planning
Date: 5/22/73

DATE	
BY	
NO.	
REVISIONS	
1. DATE	
2. BY	
3. NO.	
4. DESCRIPTION	
5. DATE	
6. BY	
7. NO.	
8. DESCRIPTION	
9. DATE	
10. BY	
11. NO.	
12. DESCRIPTION	
13. DATE	
14. BY	
15. NO.	
16. DESCRIPTION	
17. DATE	
18. BY	
19. NO.	
20. DESCRIPTION	
21. DATE	
22. BY	
23. NO.	
24. DESCRIPTION	
25. DATE	
26. BY	
27. NO.	
28. DESCRIPTION	
29. DATE	
30. BY	
31. NO.	
32. DESCRIPTION	
33. DATE	
34. BY	
35. NO.	
36. DESCRIPTION	
37. DATE	
38. BY	
39. NO.	
40. DESCRIPTION	
41. DATE	
42. BY	
43. NO.	
44. DESCRIPTION	
45. DATE	
46. BY	
47. NO.	
48. DESCRIPTION	
49. DATE	
50. BY	
51. NO.	
52. DESCRIPTION	
53. DATE	
54. BY	
55. NO.	
56. DESCRIPTION	
57. DATE	
58. BY	
59. NO.	
60. DESCRIPTION	
61. DATE	
62. BY	
63. NO.	
64. DESCRIPTION	
65. DATE	
66. BY	
67. NO.	
68. DESCRIPTION	
69. DATE	
70. BY	
71. NO.	
72. DESCRIPTION	
73. DATE	
74. BY	
75. NO.	
76. DESCRIPTION	
77. DATE	
78. BY	
79. NO.	
80. DESCRIPTION	
81. DATE	
82. BY	
83. NO.	
84. DESCRIPTION	
85. DATE	
86. BY	
87. NO.	
88. DESCRIPTION	
89. DATE	
90. BY	
91. NO.	
92. DESCRIPTION	
93. DATE	
94. BY	
95. NO.	
96. DESCRIPTION	
97. DATE	
98. BY	
99. NO.	
100. DESCRIPTION	



PROFILE
Scale: 1"=50' Hor, 1"=5' Vert.



LINEAR PROFILE
Scale: 1"=50' Hor, 1"=5' Vert.

DEVELOPER'S CERTIFICATE
 I certify that all development and/or construction will be done according to this plan of development and plan for Erosion and Sediment Control, and I also authorize periodic on-site inspection by the Howard Soil Conservation District or their authorized agents, as are deemed necessary. Deviation from this plan will not be made unless authorized by the Howard Soil Conservation District.

John A. McManus
 VICE PRESIDENT CABIN HILL CORP. Date

STRUCTURE SCHEDULE					
STRUCTURE	TYPE	INV. IN	INV. OUT	TOP ELEV.	STD. DETAIL
I-1	A-5	242.89	242.64	246.96	D64-AP119-A
I-2	A-5		243.15	246.96	D64-AP119-A
E-1	TYPE C			243.9	D52 P. 107

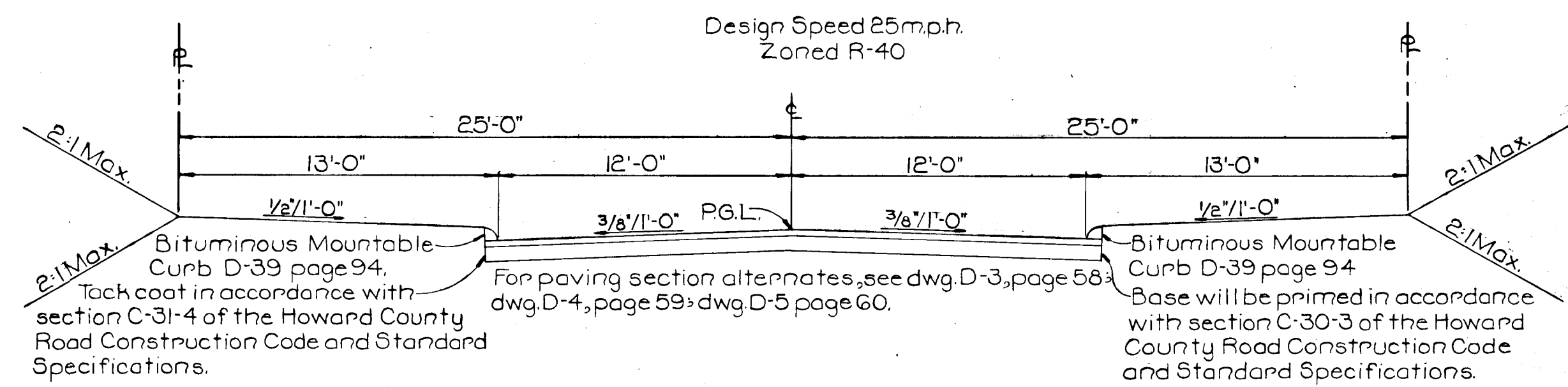
ENGINEER'S CERTIFICATE
 I certify that this plan for Erosion and Sediment Control represents a practical and workable plan based on my personal knowledge of the site conditions and that it was prepared in accordance with the requirements of the Howard Soil Conservation District.

Robert W. Johnson 5/22/73
 District Coordinator
 Howard Soil Conservation District Date

Reviewed for Howard County Soil Conservation District and meets Technical Requirements
John A. McManus 5/22/73
 U.S. Soil Conservation Service Date

This development plan is approved for Soil Erosion and Sediment Control by the Howard Soil Conservation District.
 Approved: *Robert W. Johnson* 5/22/73
 District Coordinator
 Howard Soil Conservation District Date

- SEDIMENT CONTROL NOTES**
- The developer shall notify the Howard County Soil Conservation District at least 24 hours prior to beginning any construction shown hereon. (465-3180)
 - Berms, sediments traps, etc., to be constructed prior to any onsite grading or disturbance to existing surface material.
 - All sediment control structures to remain in place until permission for their removal has been obtained from the Howard Soil Conservation District (465-3180 or 465-5000 Ext. 291)
 - All graded areas not to be sodded shall be stabilized by seeding and mulching in accordance with the following:
 - Site preparation:
 - Harrow or disc in areas proposed to be seeded the following materials at the specified rate, to a depth of 3".
 - Pulverized burnt limestone at 1 1/2 tons/acre.
 - Commercial fertilizer 10-10-10 at 3/4 tons/acre.
 - Super phosphate at 600 lbs/acre.
 - Seeding:
 - Sow the following seed mixture at the rate of 200 lbs/acre with a mechanical spreader.
 - 20% Annual Rye Grass
 - 80% Kentucky 31 Fescue (K-31)
 - The seeded area shall then be raked with a York Rake (minimum of 2 passes), covered and compacted with Cultipacker or other approved method.
 - Mulching:
 - Seeded areas shall be uniformly mulched immediately after seeding with unweathered small grain straw at the rate of 1 1/2 to 2 tons/acre.
 - Tie mulch down with liquid asphalt at 0.1 gal./s.y. or emulsified asphalt at 0.04 gal./s.y. or mulch netting



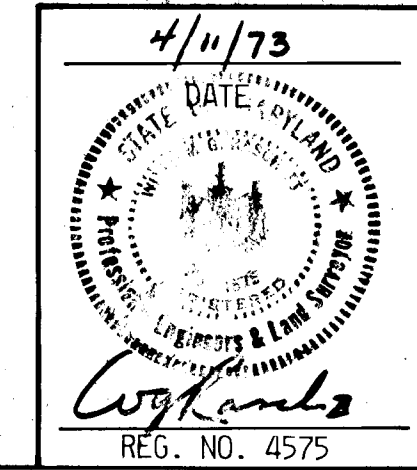
TYPICAL SECTION
 No Scale

Bituminous Mountable Curb D-39 page 94. Tack coat in accordance with section C-31-4 of the Howard County Road Construction Code and Standard Specifications.

For paving section alternates, see dwg. D-3, page 58; dwg. D-4, page 59; dwg. D-5 page 60.

Bituminous Mountable Curb D-39 page 94. Base will be primed in accordance with section C-30-3 of the Howard County Road Construction Code and Standard Specifications.

- GENERAL NOTES**
- All construction shown hereon shall be in accordance with the Howard County Road Construction Code and Standard Specifications dated November 27, 1962 and revised August 1967.
 - Reference to page and drawing numbers shown hereon are referred to the above mentioned Road Construction Code and Standard Specifications.
 - Design Speed - 25 mph



DESIGNED BY: C.C. & R.F.B.
 DRAFTED BY: C.C.
 CHECKED BY: R.B.C.

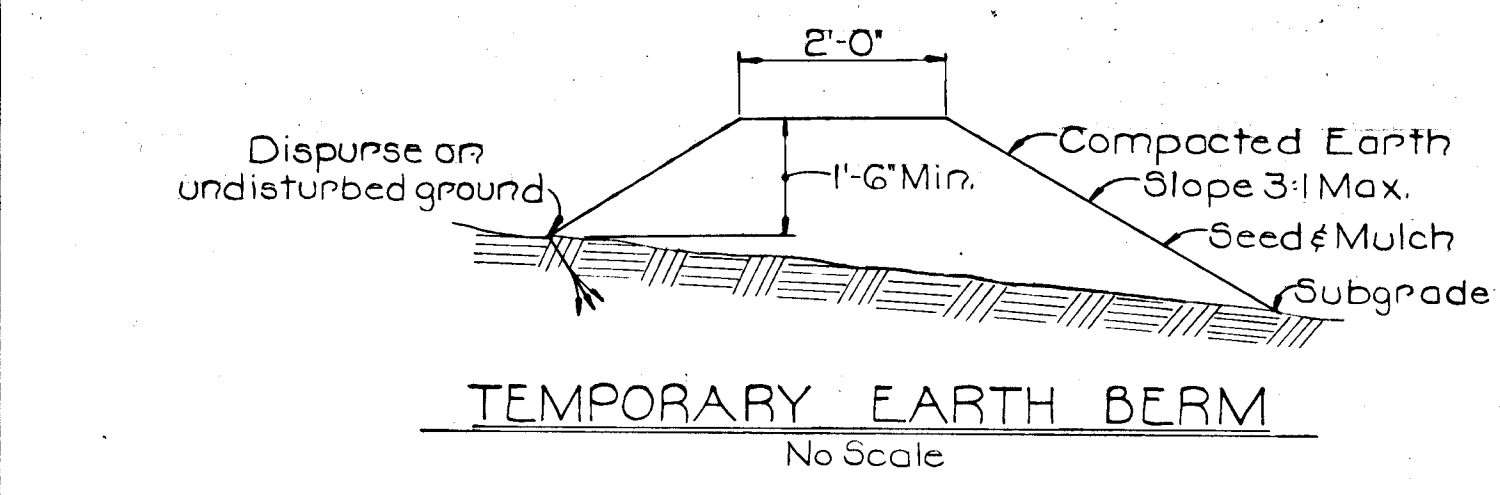
PURDUM & JESCHKE
 CONSULTING ENGINEERS &
 LAND SURVEYORS
 1023 N. CALVERT STREET
 BALTIMORE, MARYLAND 21202

OWNER & DEVELOPER
 CABIN HILL CORPORATION
 SHARP ROAD
 GLENWOOD, MARYLAND 21738

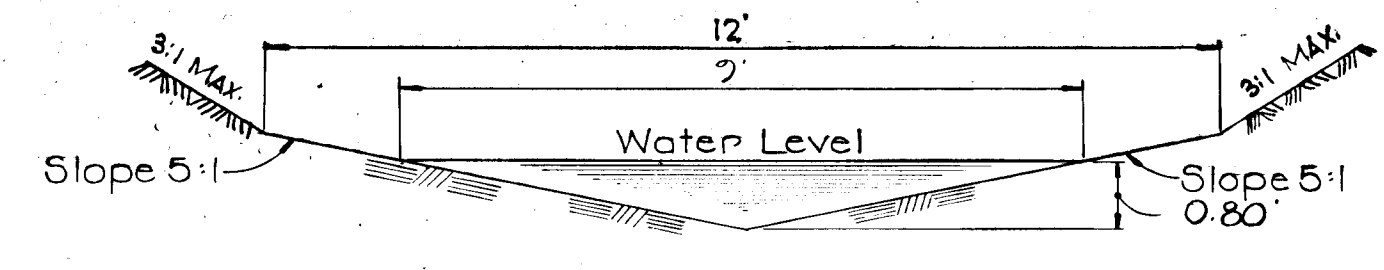
SEDIMENT CONTROL PLAN AND DETAIL SHEET
CABIN HILL
 SECTION TWO
 5TH ELECTION DISTRICT APRIL 4, 1973
 HOWARD COUNTY, MD. SCALE: AS SHOWN
 SHEET 2 OF 2

APPROVED: Department of Public Works
W.O. Falbert 5-25-73
 Chief, Bureau of Highways Date

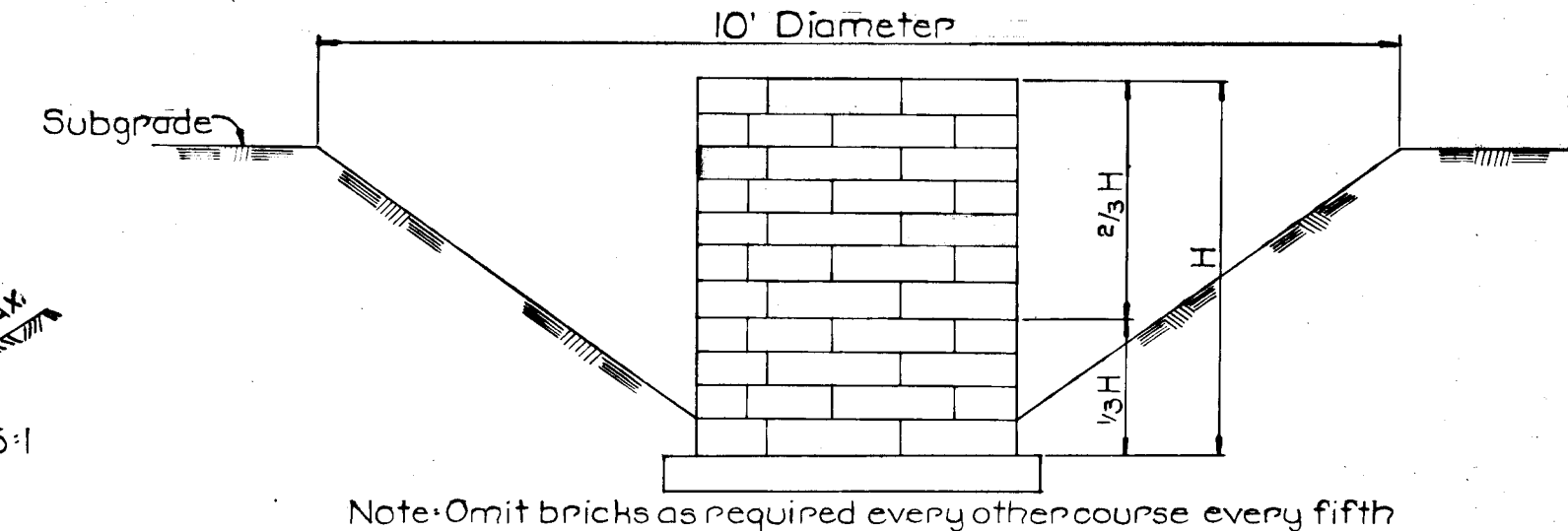
APPROVED: Office of Planning and Zoning
V.H. Lawrence 5/22/73
 Chief, Division of Land Development and Transportation Planning Date



TEMPORARY EARTH BERM
 No Scale



SODDED CHANNEL DETAIL
 No Scale



INLET SEDIMENT TRAP DETAIL
 No Scale

DESIGN DATA

A: 272'	n: 0.03
P: 9.50'	S: 5/8"
R: 0.322	S/2: 5/8"
R 3/8: 0.534	V: 1.485/03-R 3/8 S/2: 5.0 FPS
	Q: 3.72 x 5.0: 18.6 C.F.S.

STORM DRAIN PROFILE

