

CURVE DATA

P.C. 3+58.93	To P.O.C. 4+37.28	P.O.C. 4+37.28	To P.T. 7+56.71
Δ: 11°45'45"	Tan: 59.31'	Δ: 52°21'15"	Tan: 186.17'
R: 360.00'	Ch: 76.21'	R: 360.00'	Ch: 397.25'
Arc: 76.34'	Brg. N10°51'48"W	Arc: 349.44'	Brg. N43°06'48"W

PARCEL 'C'
VILLAGE OF OWEN BROWN
SECTION 2 AREA 2

PARCEL 'D'
VILLAGE OF OWEN BROWN
SECTION 2 AREA 2

PARCEL 'B'
VILLAGE OF OWEN BROWN
SECTION 2 AREA 2

PARCEL 'A'
VILLAGE OF OWEN BROWN
SECTION 2 AREA 2

DEPARTMENT OF PUBLIC WORKS
4/3/73
CHIEF, BUREAU OF HIGHWAYS DATE
OFFICE OF PLANNING AND ZONING

CHIEF, DIVISION OF LAND DEVELOPMENT AND TRANSPORTATION PLANNING DATE

AS-BUILT SURVEY - 6-2-80
Original Paper As-Built print signed by Walter Park with seal - Reg. Land Surveyor No. 5539
Bench Marks @ Nail (P.K.) Sta. 4+37.28 Carved Stone = Sta. 0+00
@ P.K. Nail @ 0-02 Carved Stone = Sta. 0-09.63 Snowden River Pkwy. 357.46

Rev. Date	Rev. No.	Revision Description
COLUMBIA 6TH ELECTION DISTRICT HOWARD COUNTY, MARYLAND		
OWNER AND DEVELOPER THE HOWARD RESEARCH AND DEVELOPEI		
PROJECT AREA VILLAGE OF OWEN BROWN SECTION 2, AREA 1		
PROJECT TITLE PLAN AND PROFILE CARVED STONE		
Scale: As Shown		Date: 3/14/73
WHITMAN, REQUARDT & ASSOCIATES ENGINEERS BALTIMORE, MARYLAND 21202		

- NOTES:**
- See Detail sheet 5 of 7 for special Alignment and Grade from Sta. 0+00 to 3+58.93.
 - See Title Sheet for Estimate of Quantities.
 - Inlet 1-7 and first 25 feet of 27" R.C.P. shall not be constructed until just prior to removal of all Sediment Control Structures. See Sediment Basin No. 1, Sheet 6 of 7.

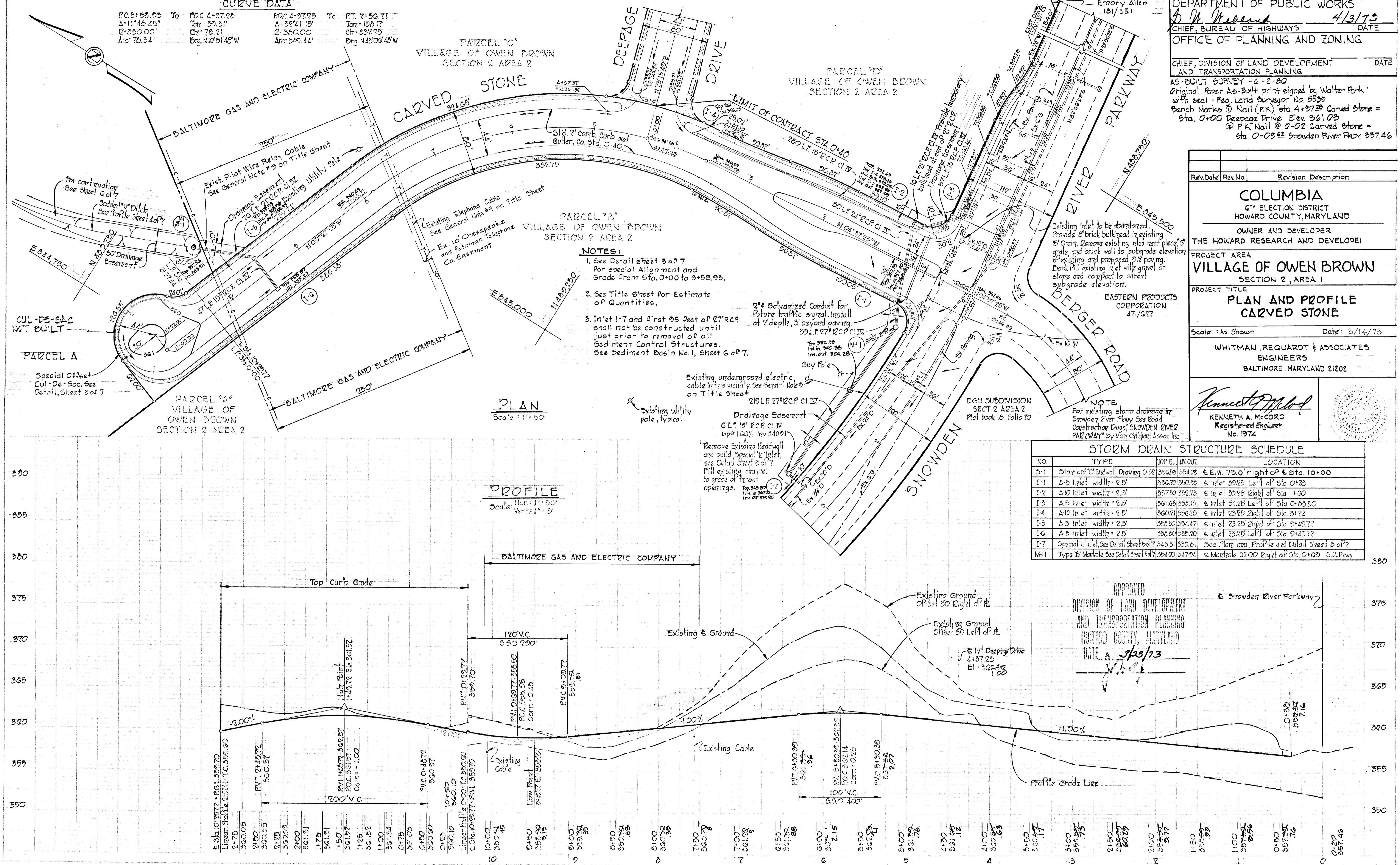
NOTE:
For existing storm drainage in Snowden River Pkwy. See Road Construction Dwg. SNOWDEN RIVER PARKWAY by Walt Chikland Assoc. Inc.

STORM DRAIN STRUCTURE SCHEDULE

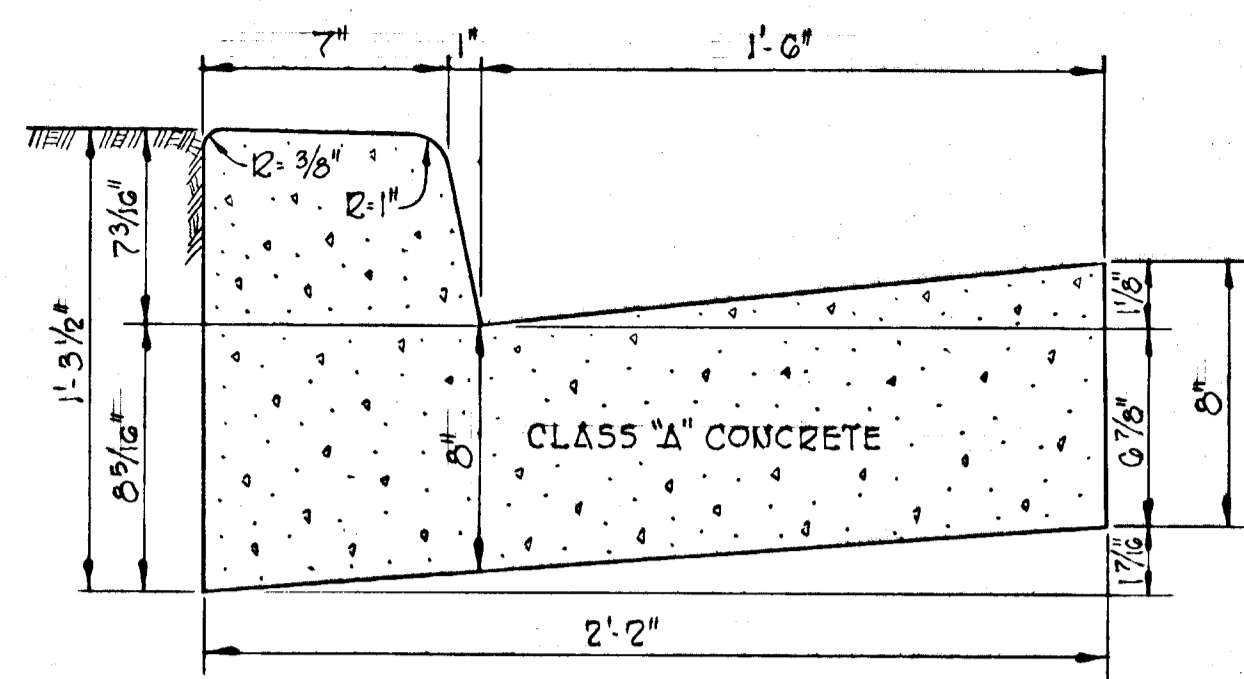
NO.	TYPE	TOP EL.	IN/OUT	LOCATION
5-1	Standard 'C' Endwall, Drawing 0-52	356.89	354.09	E.W. 79.0' right of Sta. 10+00
1-1	A-5 Inlet width = 2.5'	356.70	350.00	E. Inlet 39.25' Left of Sta. 0+78
1-2	A-10 Inlet width = 2.5'	357.50	352.73	E. Inlet 39.25' Right of Sta. 1+00
1-3	A-5 Inlet width = 2.5'	361.08	356.15	E. Inlet 51.25' Left of Sta. 0+33.50
1-4	A-10 Inlet width = 2.5'	360.21	356.28	E. Inlet 23.25' Right of Sta. 3+72
1-5	A-5 Inlet width = 2.5'	358.20	354.47	E. Inlet 23.25' Right of Sta. 5+45.77
1-6	A-5 Inlet width = 2.5'	358.00	355.70	E. Inlet 23.25' Left of Sta. 5+45.77
1-7	Special 'L' Inlet, See Detail Sheet 5 of 7	343.31	339.61	See Plan and Profile and Detail Sheet 5 of 7
MH 1	Type 'B' Manhole, See Detail Sheet 5 of 7	354.00	347.94	E. Manhole 62.00' Right of Sta. 0+69 S.R. Pkwy

PLAN
Scale: 1" = 50'

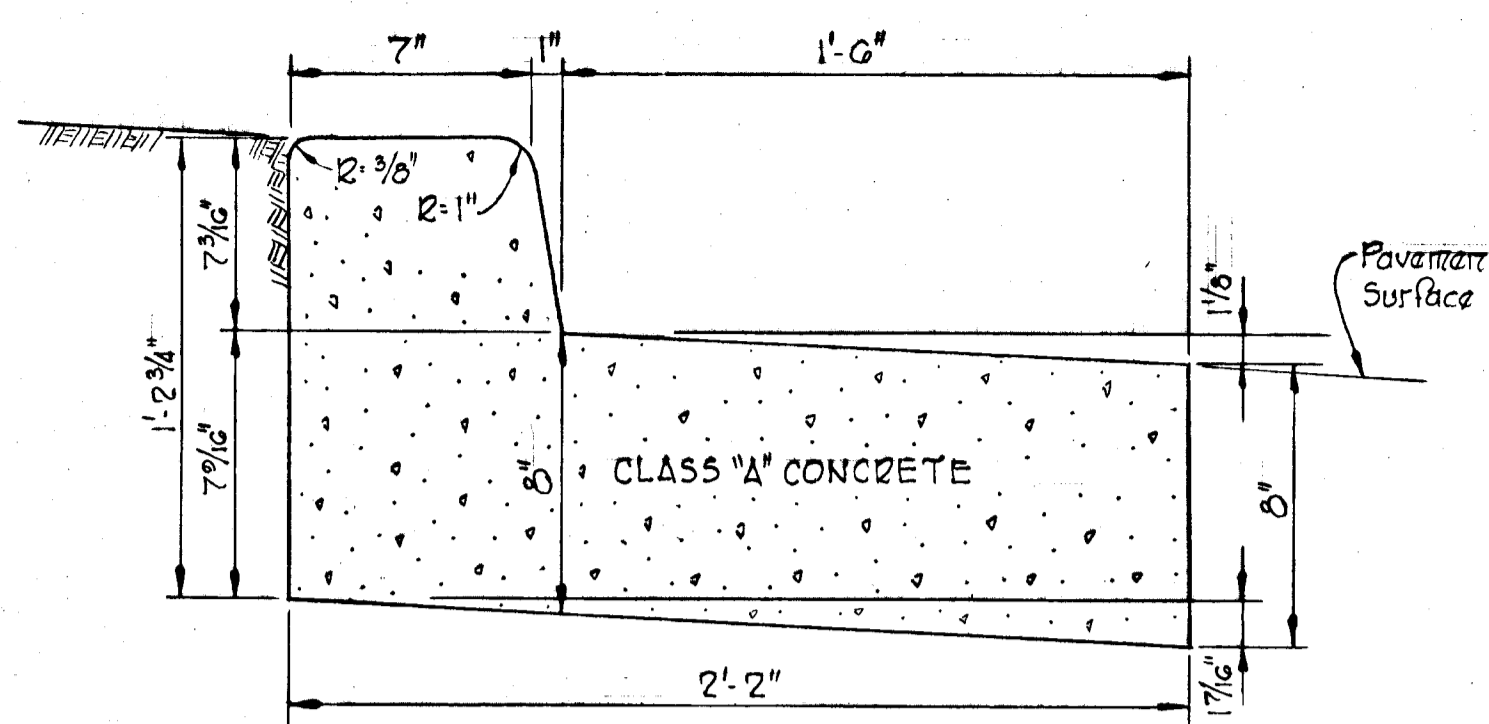
PROFILE
Scale: Hor: 1" = 50'
Vert: 1" = 5'



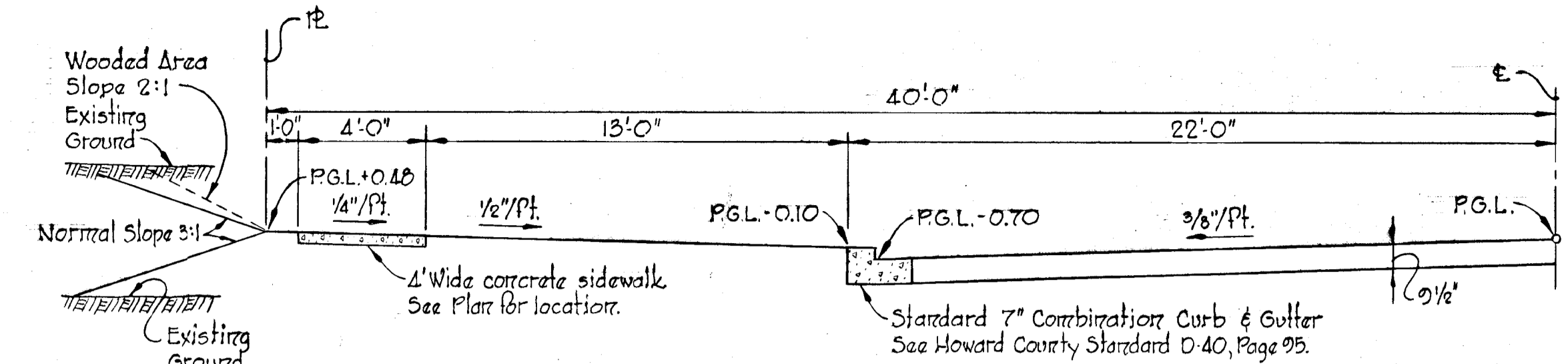
APPROVED
DIVISION OF LAND DEVELOPMENT AND TRANSPORTATION PLANNING
HOWARD COUNTY, MARYLAND
DATE: 3/23/73
[Signature]



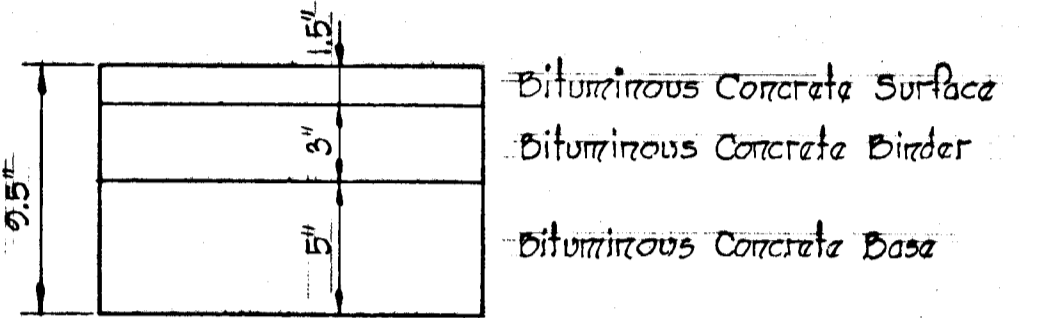
STANDARD 7' COMBINATION CURB & GUTTER
 No Scale



REVERSE 7' COMBINATION CURB & GUTTER
 No Scale

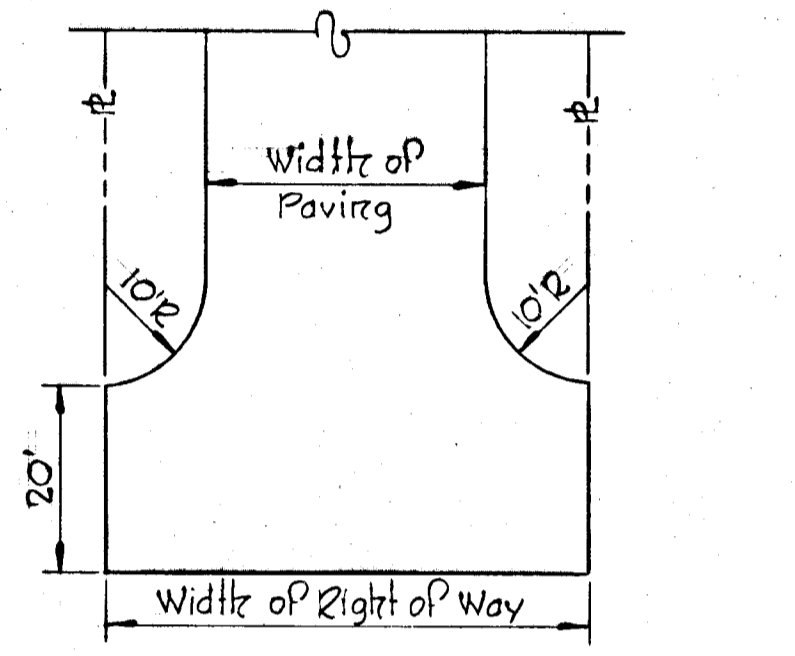


TYPICAL HALF SECTION
 60' R/W - 44' ROADWAY
 Scale: 1/4" = 1'-0"

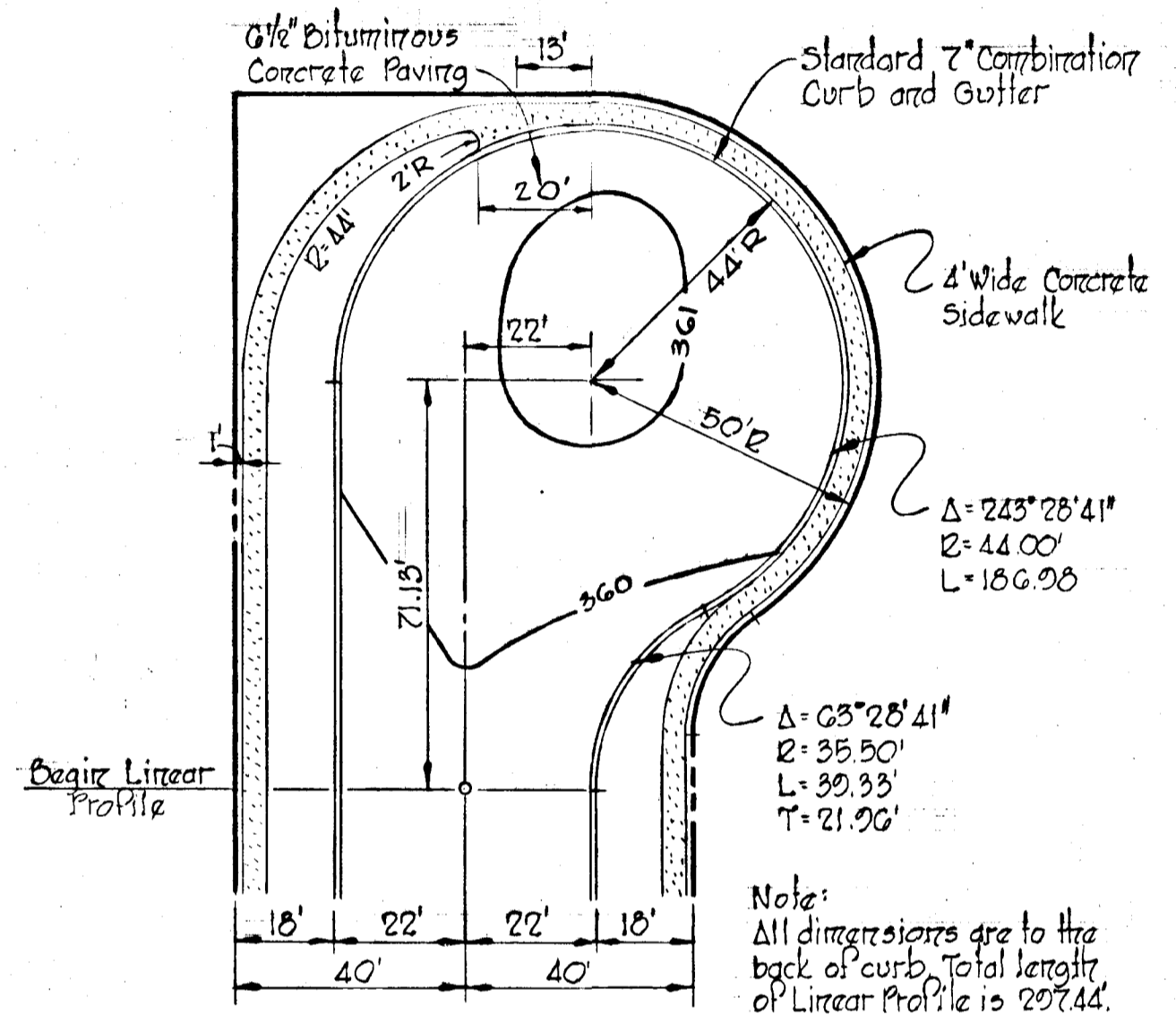


- Notes:
- See Howard County Standard Dwg. D-12, Page 87.
 - Base will be primed in accordance with C-30.3 as provided in the Howard County Road Construction Code and Standard Specifications.
 - Tack coat is required in accordance with section C-31.4 of the Howard County Road Construction Code and Standard Specifications.

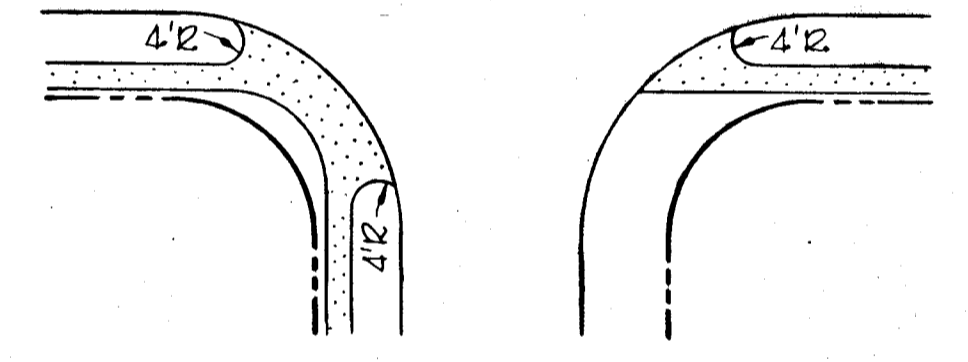
TYPICAL PAVING SECTION
 No Scale



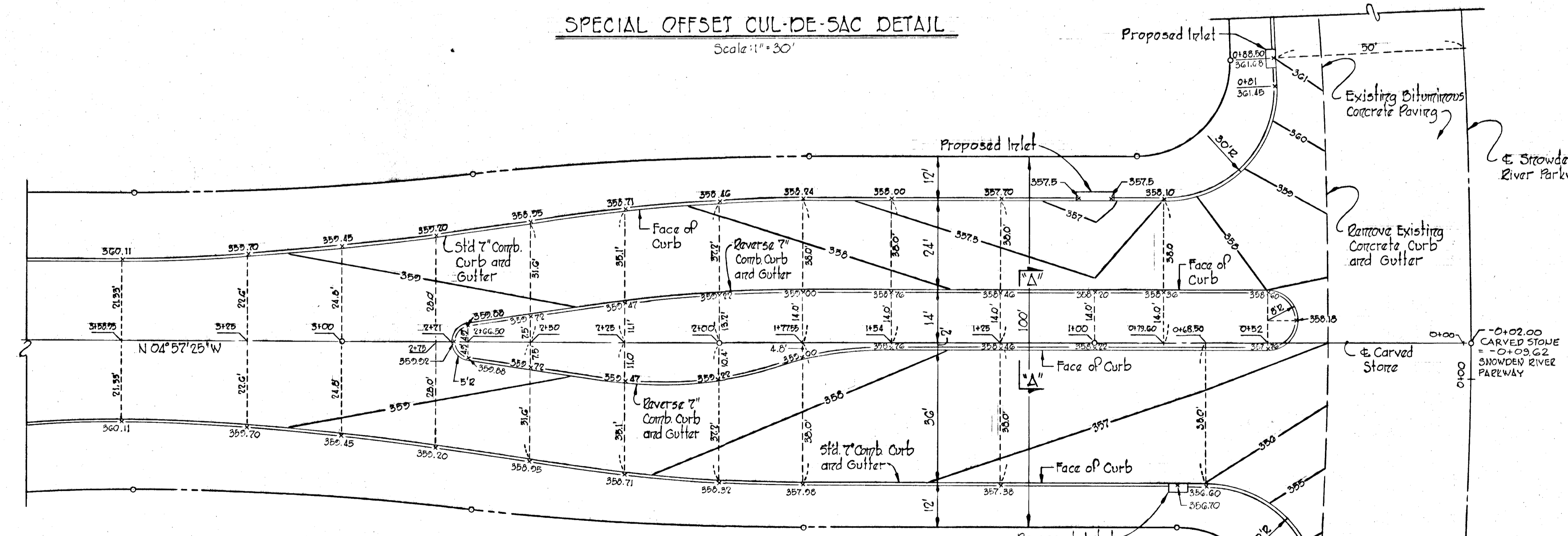
TYPICAL TEE TURN AROUND
 No Scale



SPECIAL OFFSET CUL-DE-SAC DETAIL
 Scale: 1" = 30'



SIDEWALK DETAILS
 No Scale

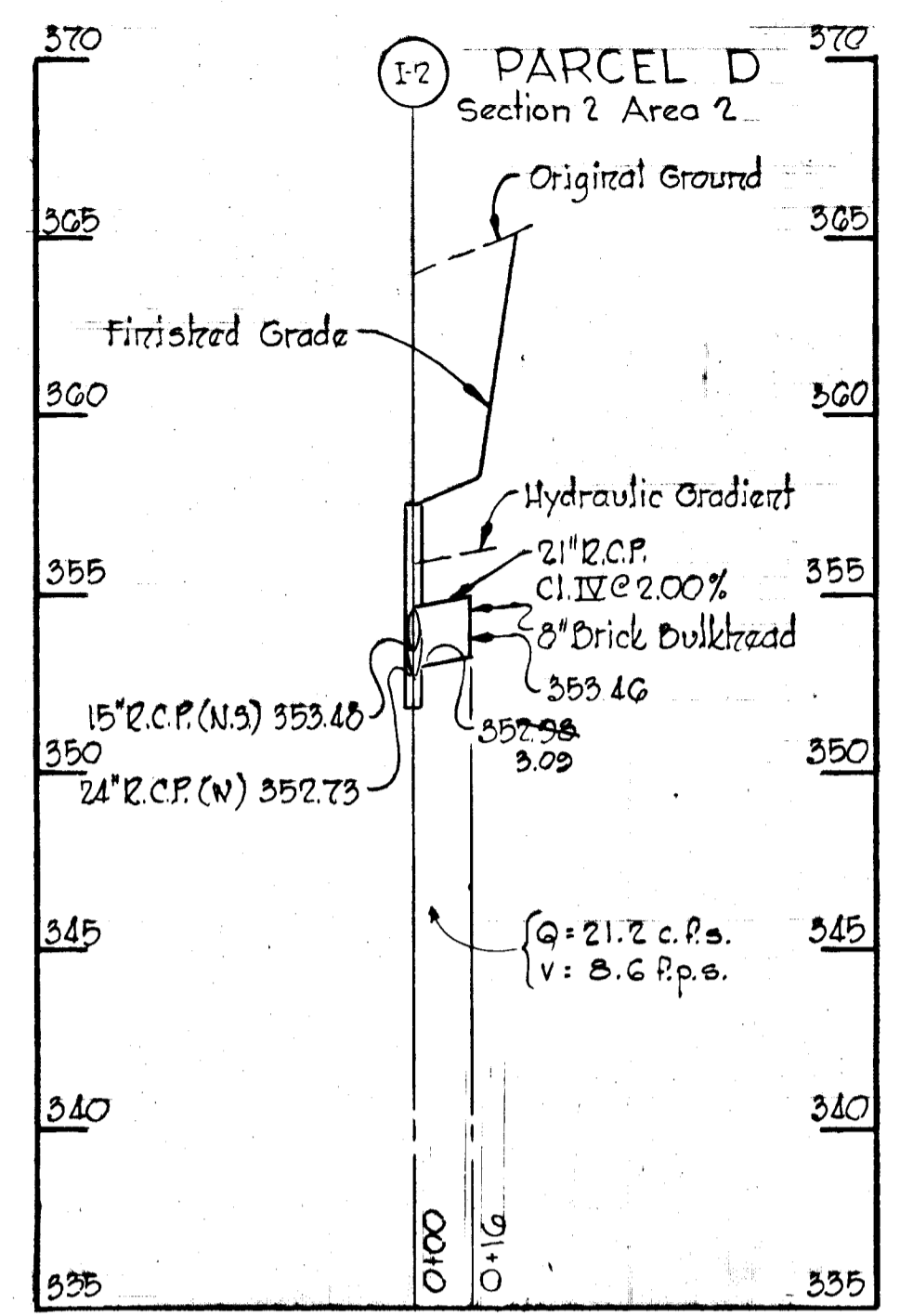
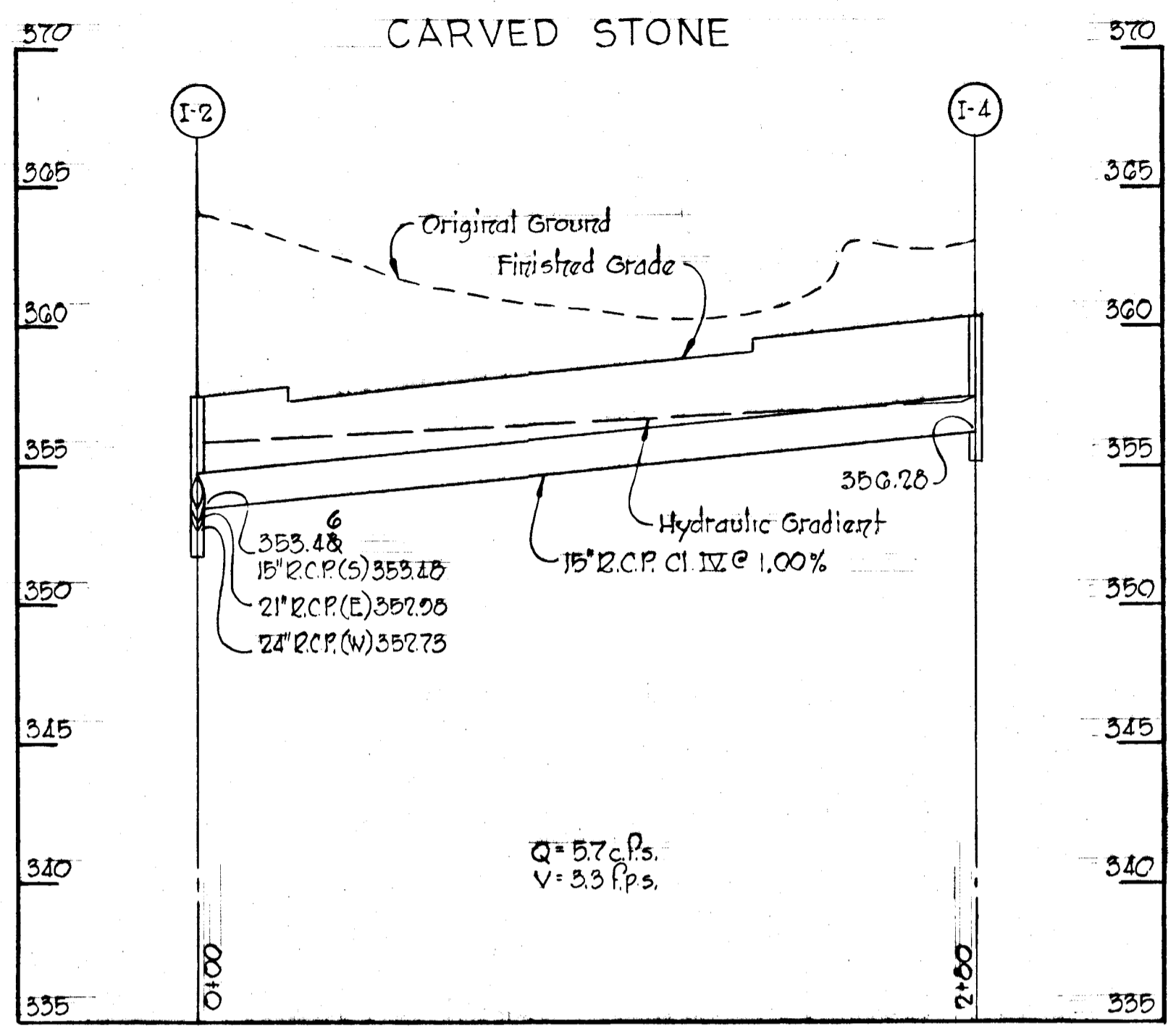
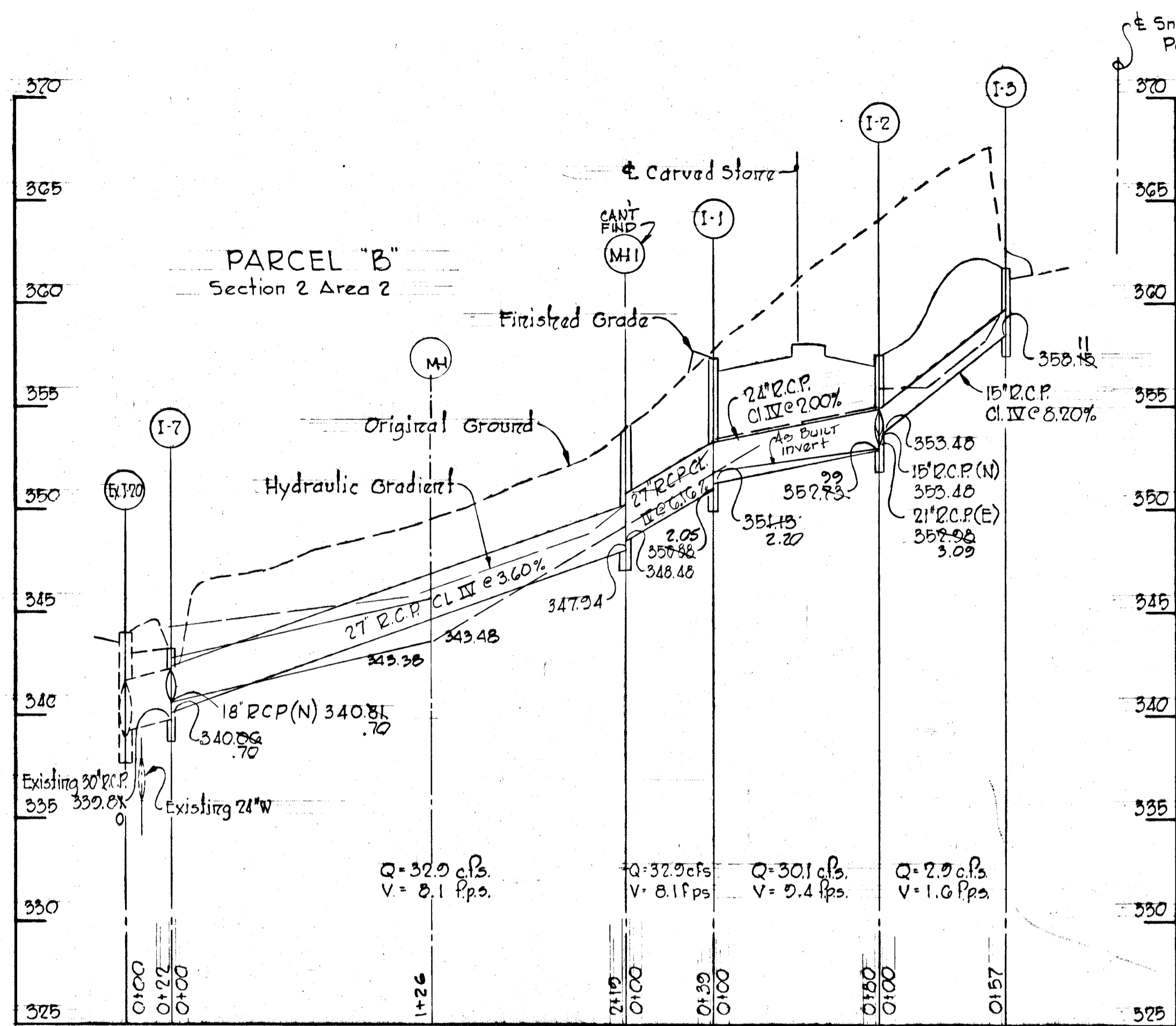


DETAIL CARVED STONE
 STA. 0+00 TO STA. 3+58.98
 Scale: 1" = 20'

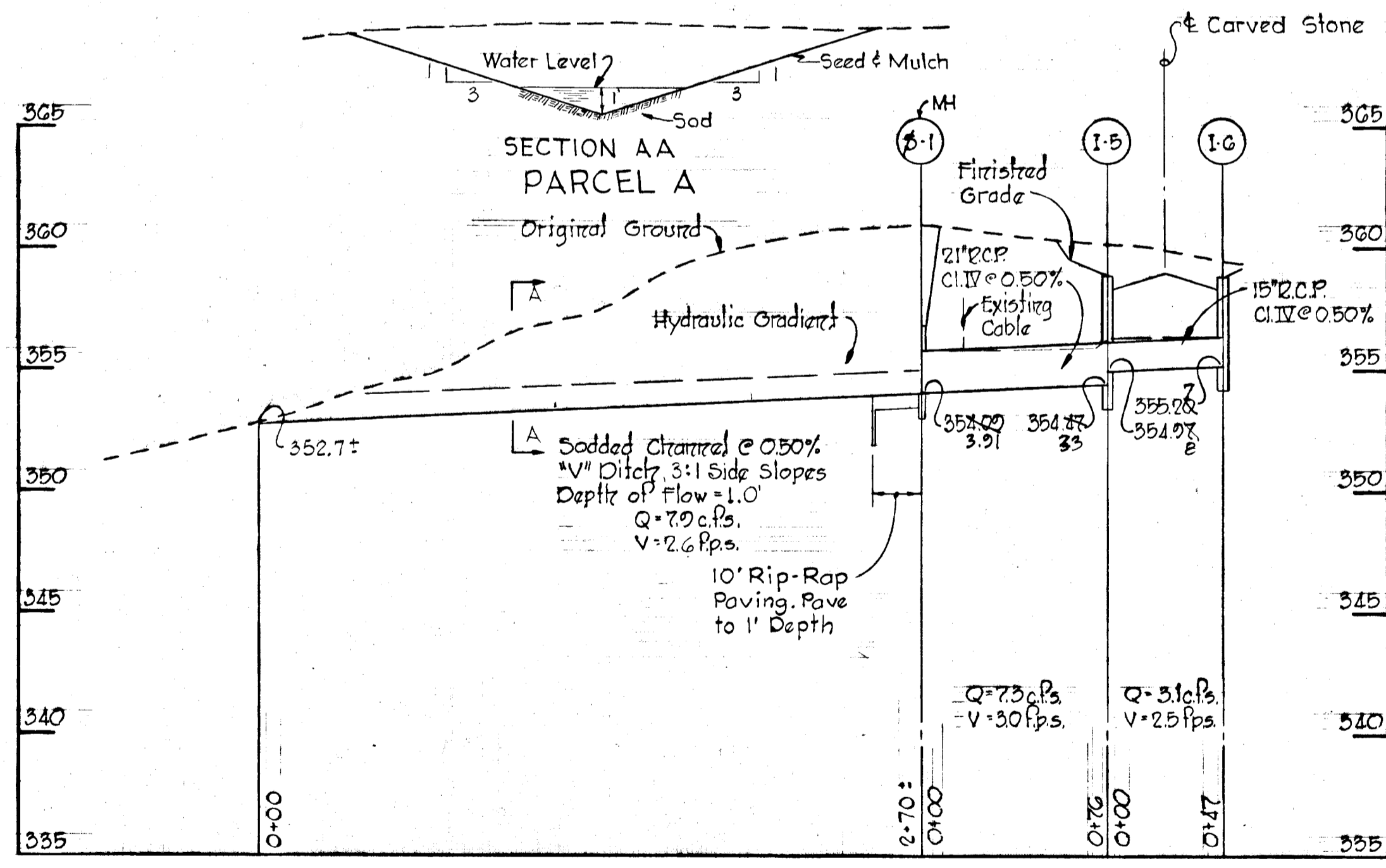
SECTION 'A-A'

APPROVED
 DIVISION OF LAND DEVELOPMENT AND TRANSPORTATION PLANNING
 HOWARD COUNTY, MARYLAND
 DATE 3/23/73
 S.W. McLeod

Rev. Date	Rev. No.	Revision Description
COLUMBIA		
6 TH ELECTION DISTRICT HOWARD COUNTY, MARYLAND OWNER AND DEVELOPER		
THE HOWARD RESEARCH AND DEVELOPMENT CORP.		
PROJECT AREA VILLAGE OF OWEN BROWN SECTION 2, AREA 1		
PROJECT TITLE ROADWAY DETAILS		
Scale: As Shown		Date: 3/14/73
WHITMAN, REQUARDT & ASSOCIATES ENGINEERS BALTIMORE, MARYLAND 21202		
Kenneth A. McLeod KENNETH A. McCORD Registered Engineer No 1974		



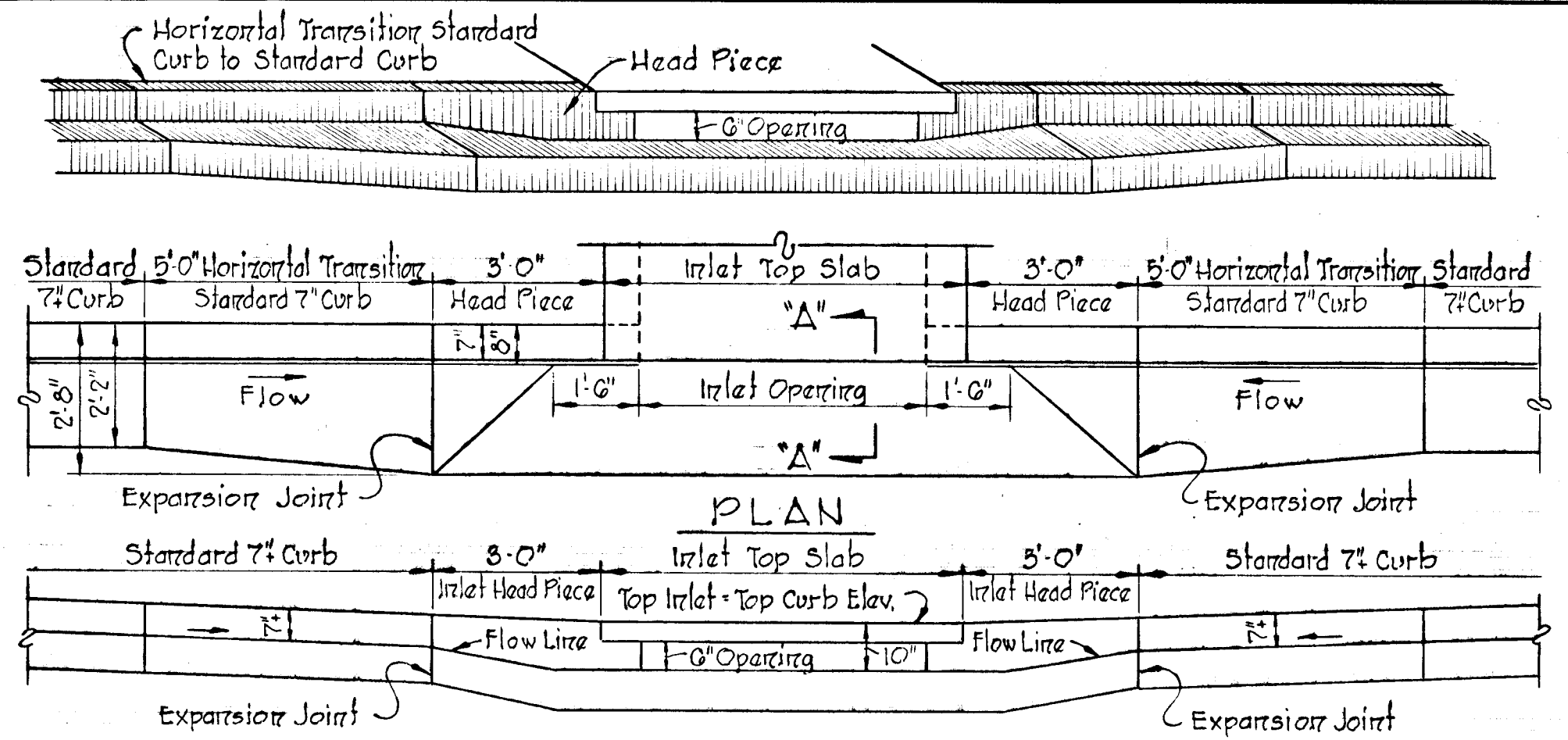
DEPARTMENT OF PUBLIC WORKS
 CHIEF, BUREAU OF HIGHWAYS 4/3/73 DATE
 OFFICE OF PLANNING AND ZONING
 CHIEF, DIVISION OF LAND DEVELOPMENT AND TRANSPORTATION PLANNING _____ DATE



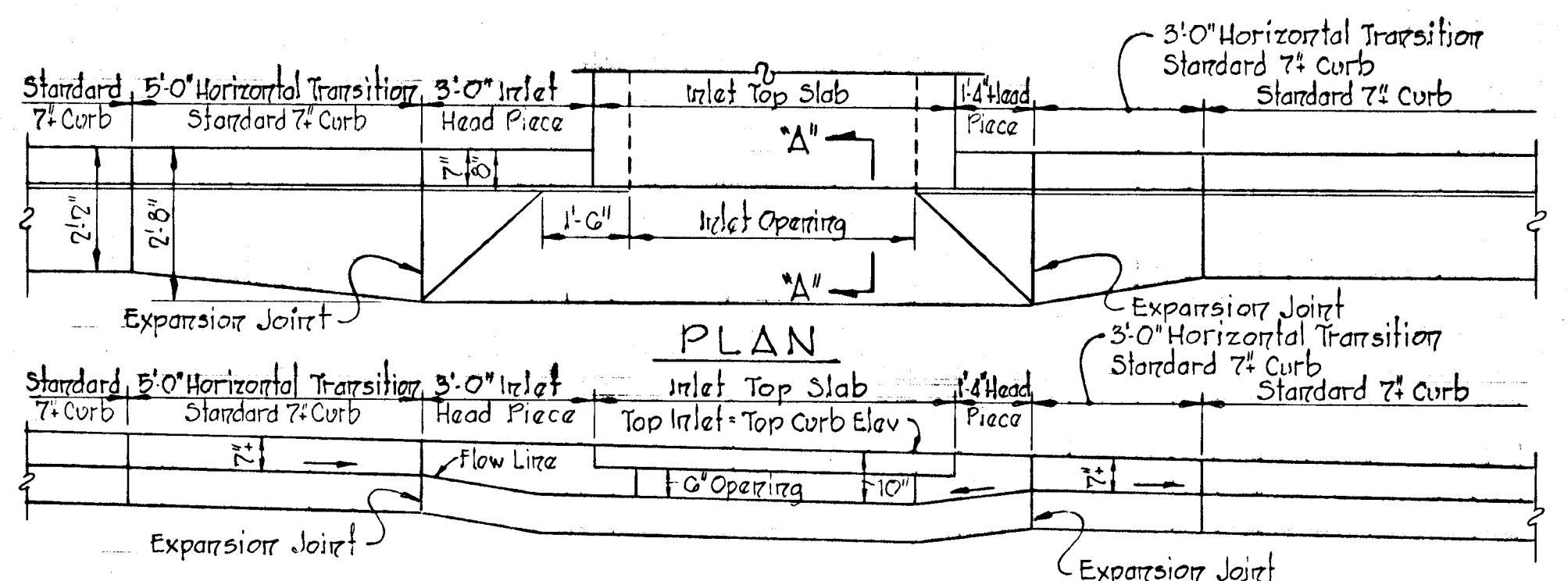
APPROVED
 DIVISION OF LAND DEVELOPMENT
 AND TRANSPORTATION PLANNING
 HOWARD COUNTY, MARYLAND
 DATE 4/3/73
 [Signature]

AS BUILT SURVEY - 6-2-80

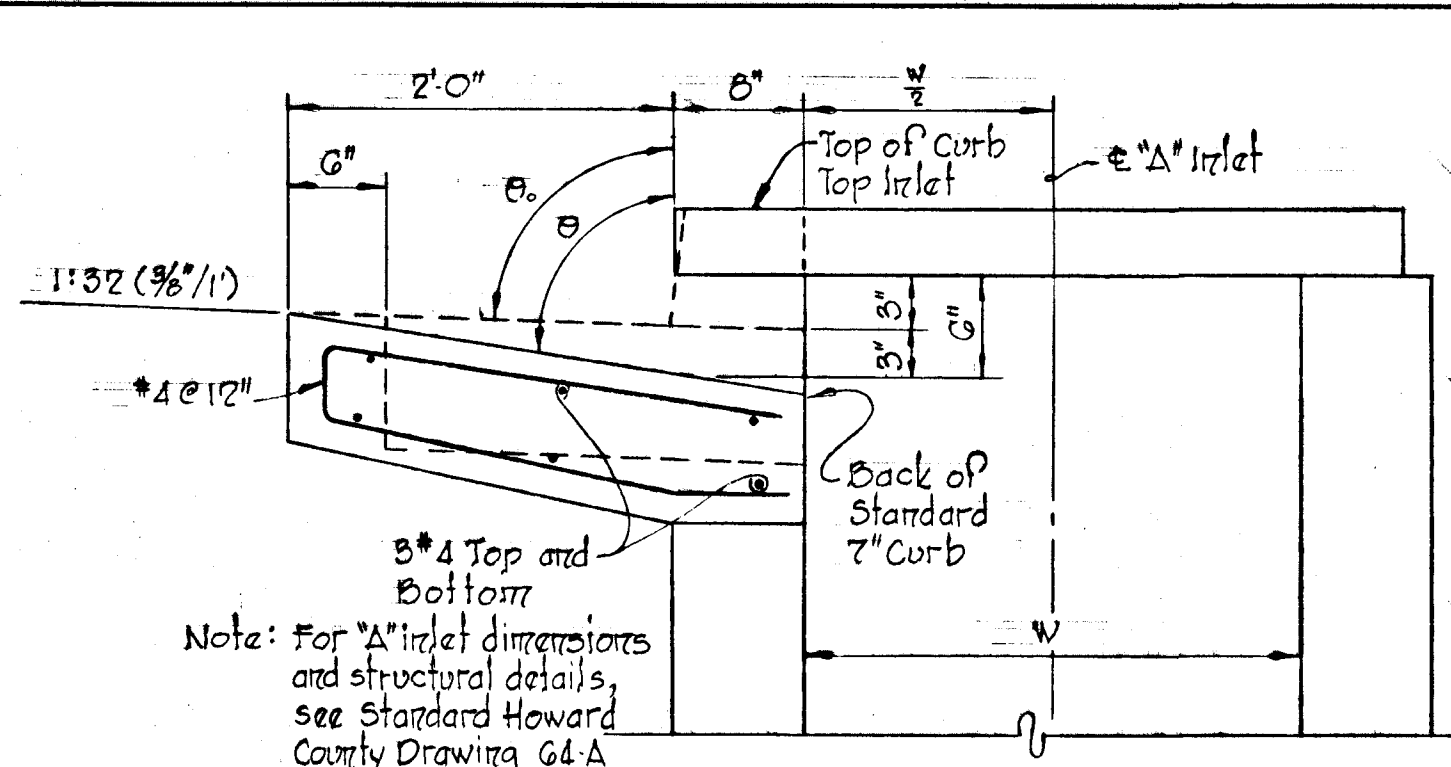
Rev. Date	Rev. No.	Revision Description
COLUMBIA 6 TH ELECTION DISTRICT HOWARD COUNTY, MARYLAND OWNER AND DEVELOPER THE HOWARD RESEARCH AND DEVELOPMENT CORP.		
PROJECT AREA		
VILLAGE OF OWEN BROWW SECTION 2, AREA 1		
PROJECT TITLE		
STORM DRAIN PROFILES		
Scale: As Shown	Date: 3/14/73	
WHITMAN, REQUARDT & ASSOCIATES ENGINEERS BALTIMORE, MARYLAND 21202		
[Signature] KENNETH A. McCORD Registered Engineer No. 1974		



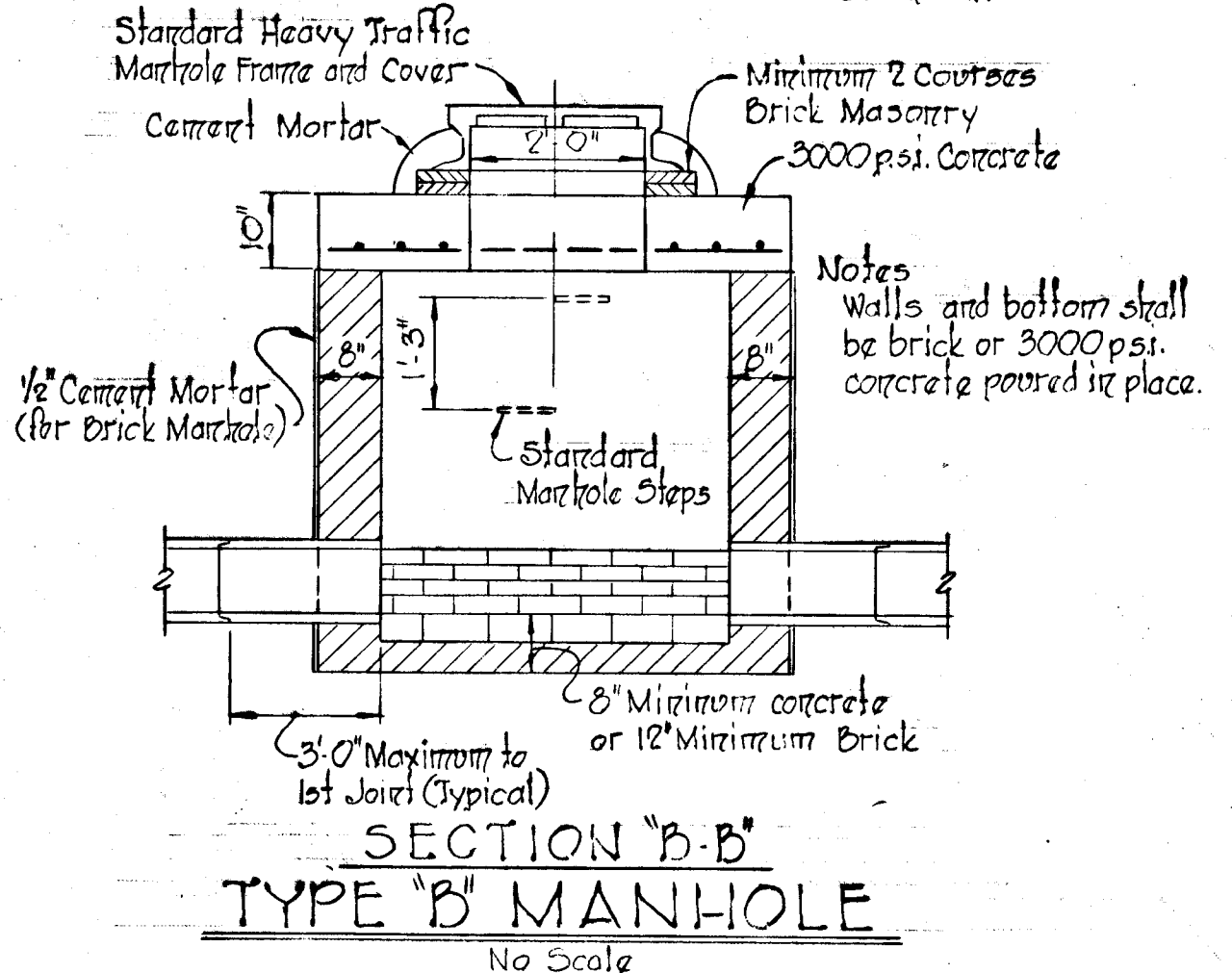
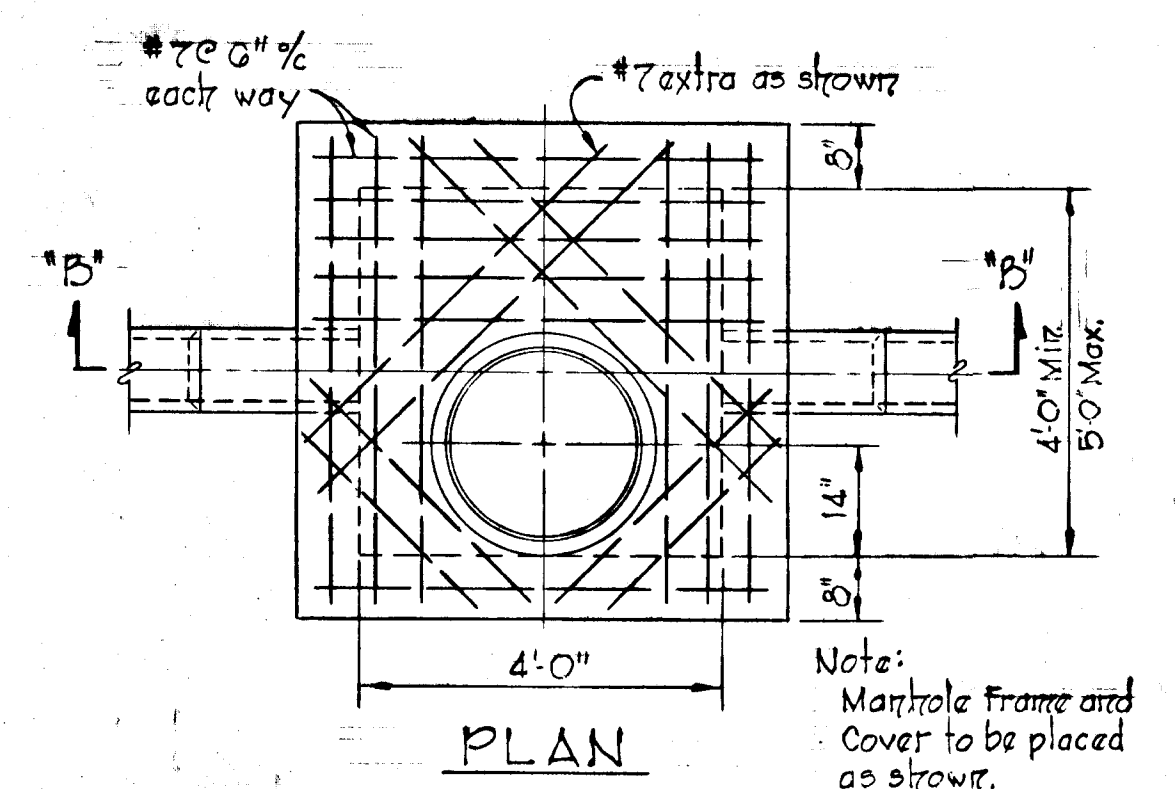
SECTION ALONG FLOW LINE
SUMPED "A" INLETS - STANDARD CURB



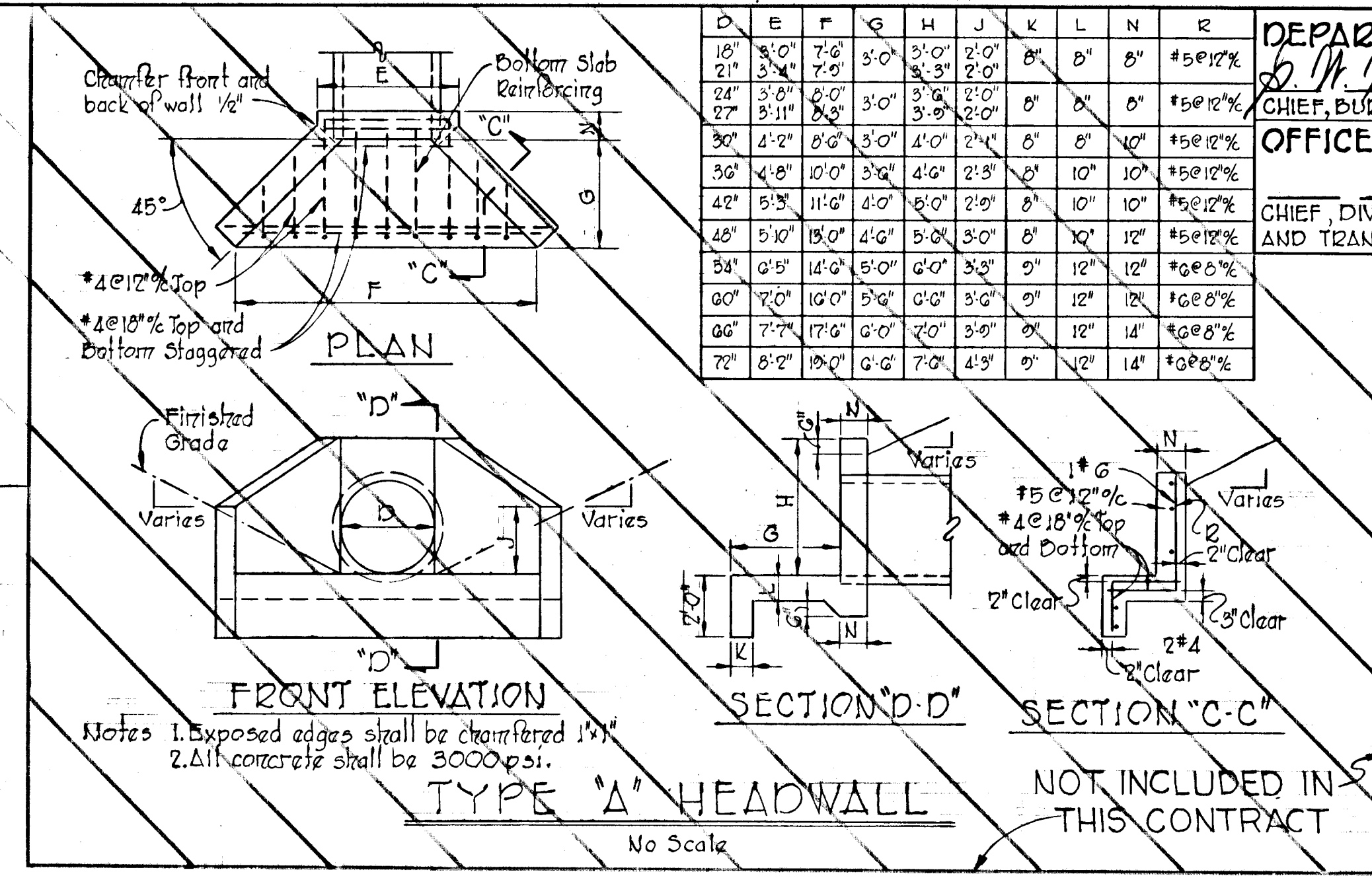
SECTION ALONG FLOW LINE
"A" INLETS - STANDARD CURB



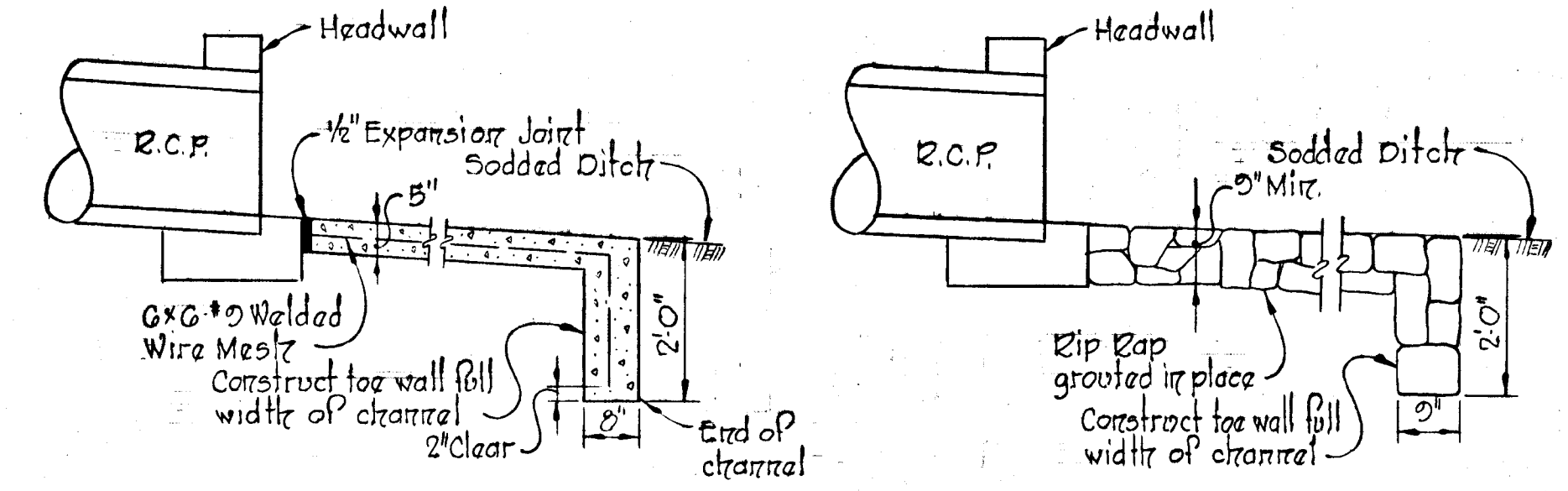
SECTION "A-A"
"A" INLET - STANDARD CURB



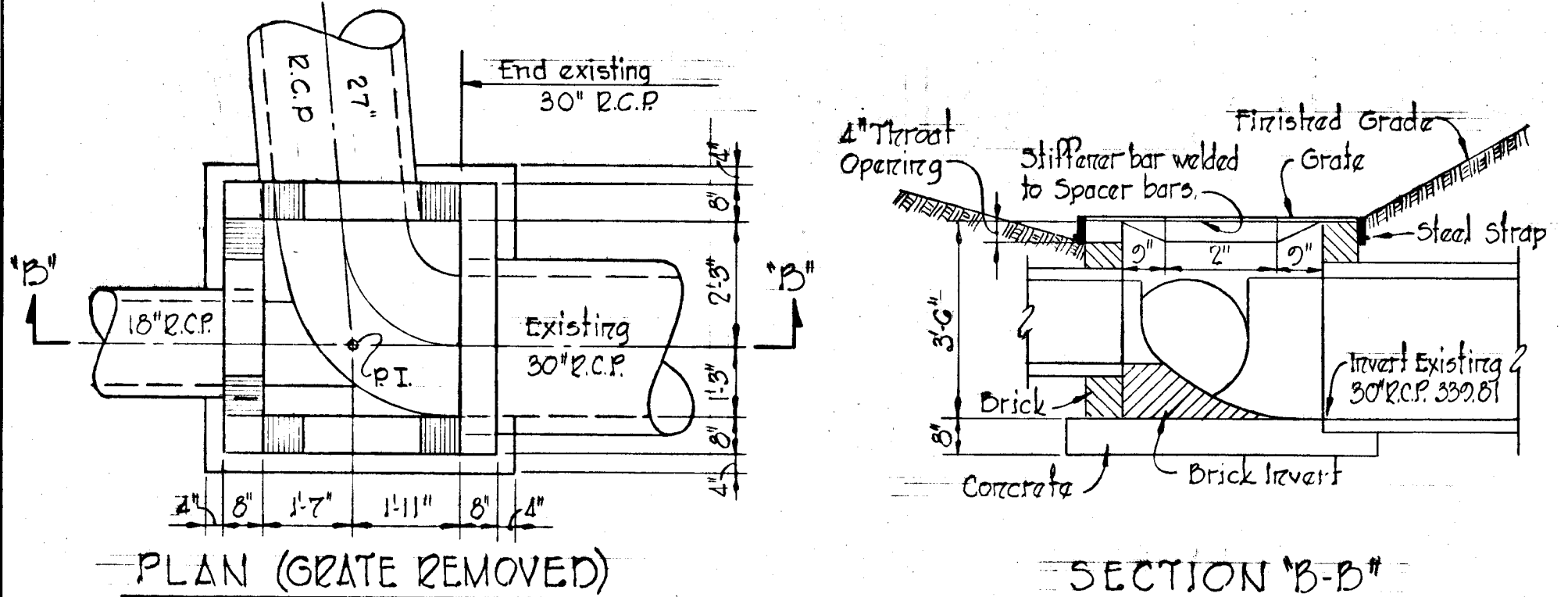
SECTION "B-B"
TYPE "B" MANHOLE



FRONT ELEVATION
TYPE "A" HEADWALL

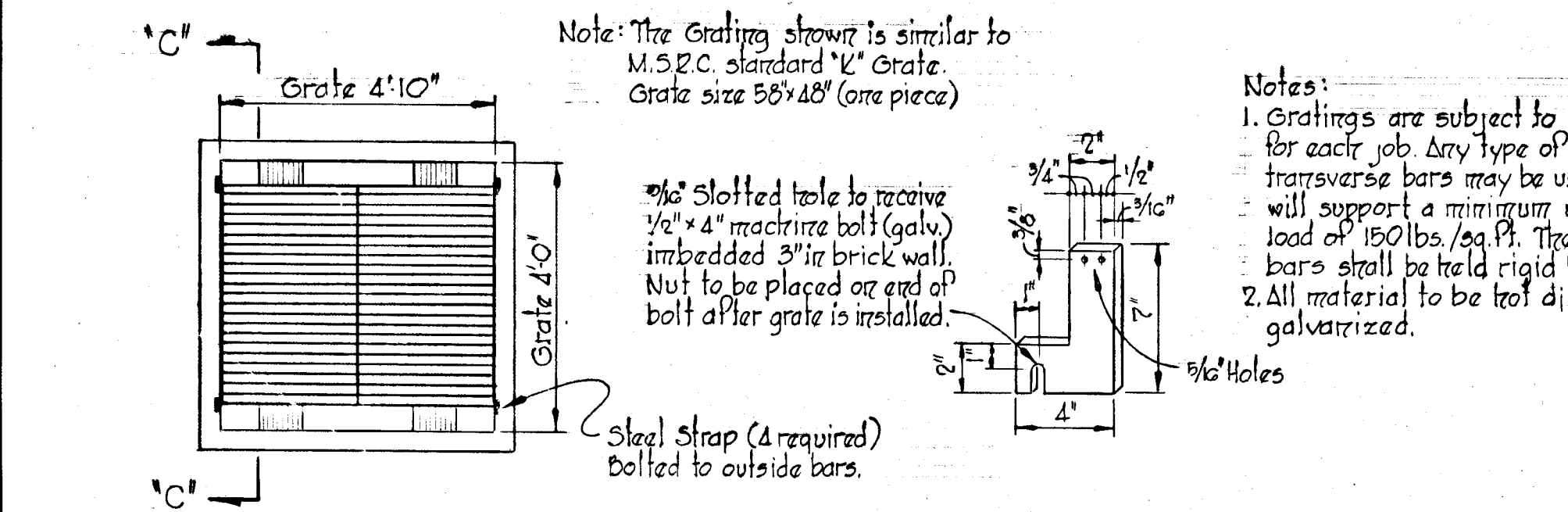


CONCRETE PAVING
TYPICAL OUTLET PAVING
RIP-RAP PAVING



PLAN (GRATE REMOVED)

SECTION "B-B"



PLAN (WITH GRATE)

SECTION "C-C"

SPECIAL "K" INLET I-7
Scale: 3/8" = 1'-0"

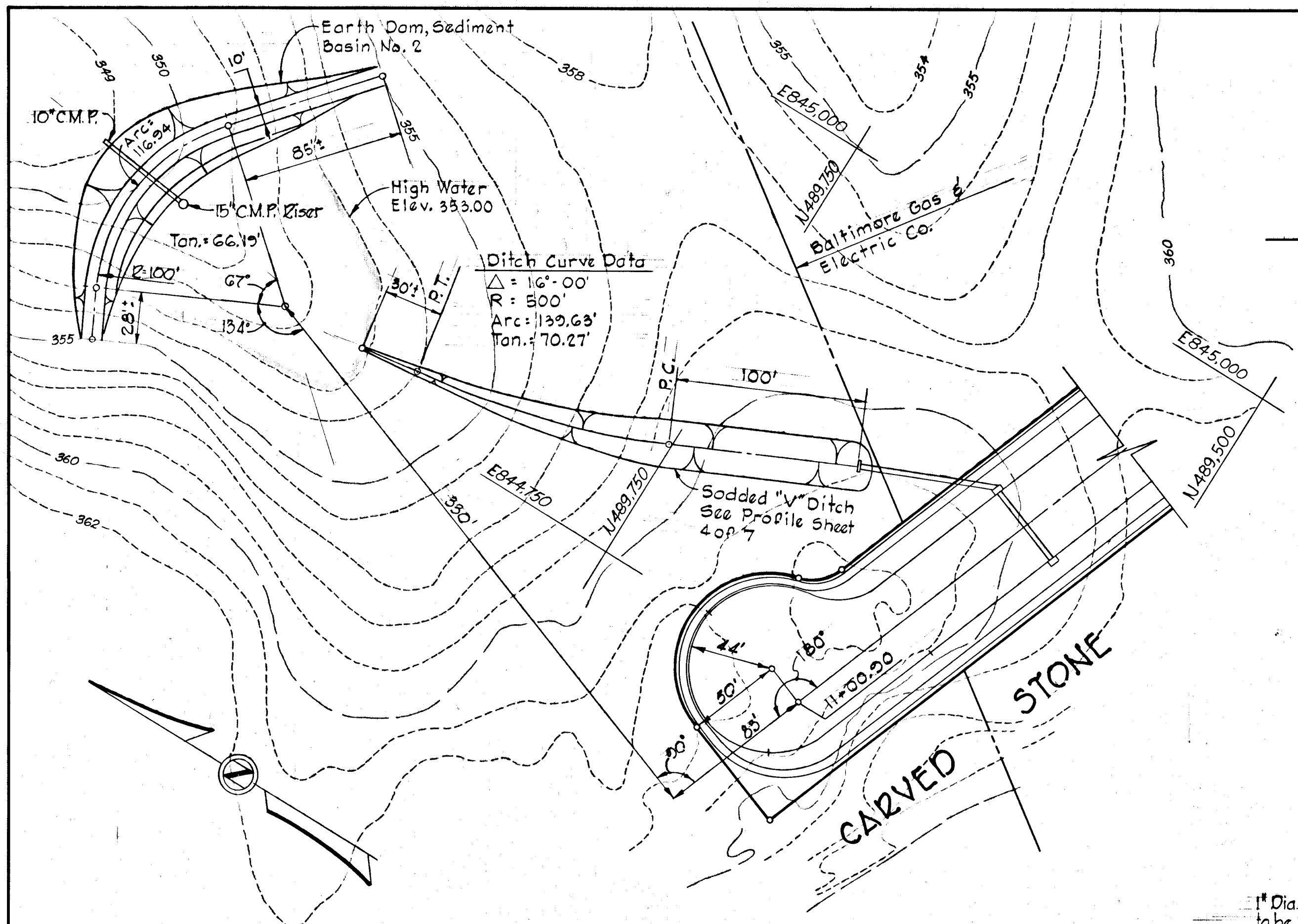
D	E	F	G	H	J	K	L	N	R
18'	3'-0"	7'-0"	3'-0"	2'-0"	2'-0"	8'	8'	8'	#5 @ 12"
21'	3'-4"	7'-6"	3'-3"	2'-0"	2'-0"	8'	8'	8'	#5 @ 12"
24'	3'-8"	8'-0"	3'-0"	2'-0"	2'-0"	8'	8'	8'	#5 @ 12"
27'	3'-11"	8'-6"	3'-0"	2'-0"	2'-0"	8'	8'	8'	#5 @ 12"
30'	4'-2"	9'-0"	3'-0"	2'-0"	2'-0"	8'	8'	8'	#5 @ 12"
33'	4'-6"	9'-6"	3'-0"	2'-0"	2'-0"	8'	8'	8'	#5 @ 12"
36'	4'-10"	10'-0"	3'-0"	2'-0"	2'-0"	8'	8'	8'	#5 @ 12"
39'	5'-2"	10'-6"	3'-0"	2'-0"	2'-0"	8'	8'	8'	#5 @ 12"
42'	5'-6"	11'-0"	3'-0"	2'-0"	2'-0"	8'	8'	8'	#5 @ 12"
45'	5'-10"	11'-6"	3'-0"	2'-0"	2'-0"	8'	8'	8'	#5 @ 12"
48'	5'-14"	12'-0"	3'-0"	2'-0"	2'-0"	8'	8'	8'	#5 @ 12"
51'	5'-18"	12'-6"	3'-0"	2'-0"	2'-0"	8'	8'	8'	#5 @ 12"
54'	6'-2"	13'-0"	3'-0"	2'-0"	2'-0"	8'	8'	8'	#5 @ 12"
57'	6'-6"	13'-6"	3'-0"	2'-0"	2'-0"	8'	8'	8'	#5 @ 12"
60'	7'-0"	14'-0"	3'-0"	2'-0"	2'-0"	8'	8'	8'	#5 @ 12"
63'	7'-4"	14'-6"	3'-0"	2'-0"	2'-0"	8'	8'	8'	#5 @ 12"
66'	7'-8"	15'-0"	3'-0"	2'-0"	2'-0"	8'	8'	8'	#5 @ 12"
69'	8'-2"	15'-6"	3'-0"	2'-0"	2'-0"	8'	8'	8'	#5 @ 12"
72'	8'-6"	16'-0"	3'-0"	2'-0"	2'-0"	8'	8'	8'	#5 @ 12"

DEPARTMENT OF PUBLIC WORKS
D. W. McLeod
CHIEF, BUREAU OF HIGHWAYS
OFFICE OF PLANNING AND ZONING
DATE 4/13/73

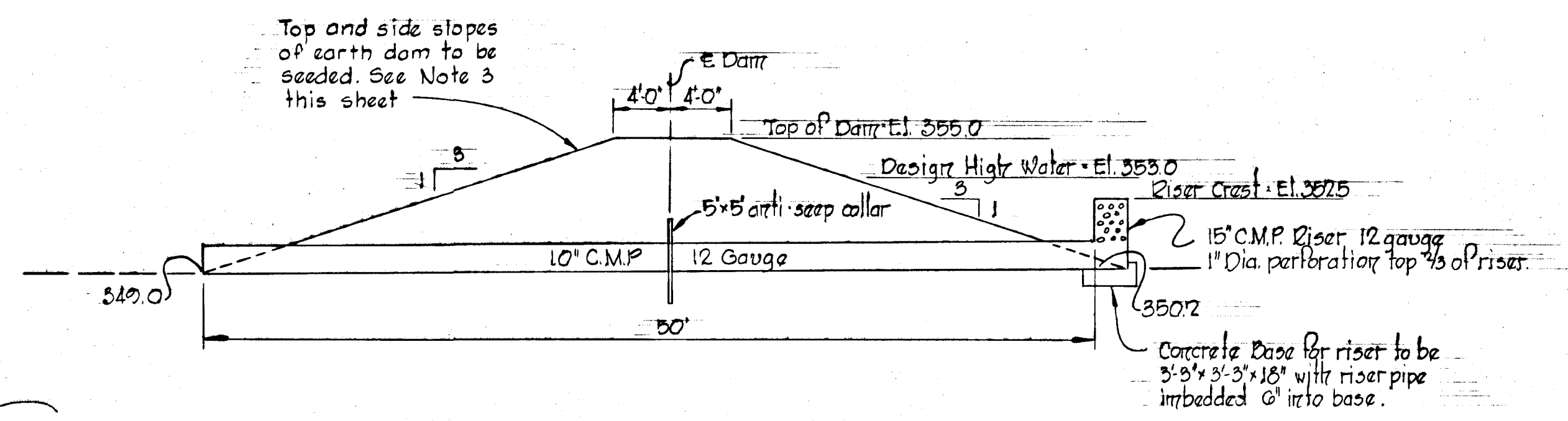
CHIEF, DIVISION OF LAND DEVELOPMENT AND TRANSPORTATION PLANNING
DATE

APPROVED
DIVISION OF LAND DEVELOPMENT AND TRANSPORTATION PLANNING
HOWARD COUNTY, MARYLAND
DATE 3/23/73
J. L. L.

Rev. Date	Rev. No.	Revision Description
COLUMBIA		
8TH ELECTION DISTRICT HOWARD COUNTY, MARYLAND OWNER AND DEVELOPER THE HOWARD RESEARCH AND DEVELOPMENT CORP.		
PROJECT AREA VILLAGE OF OWEN BROWN SECTION 2, AREA 1		
PROJECT TITLE STORM DRAIN DETAILS		
Scale: As Shown Date: 3/14/73		
WHITMAN, REQUART & ASSOCIATES ENGINEERS BALTIMORE, MARYLAND 21202		
Kenneth A. McLeod KENNETH A. MCCOYD Registered Engineer No. 1974		

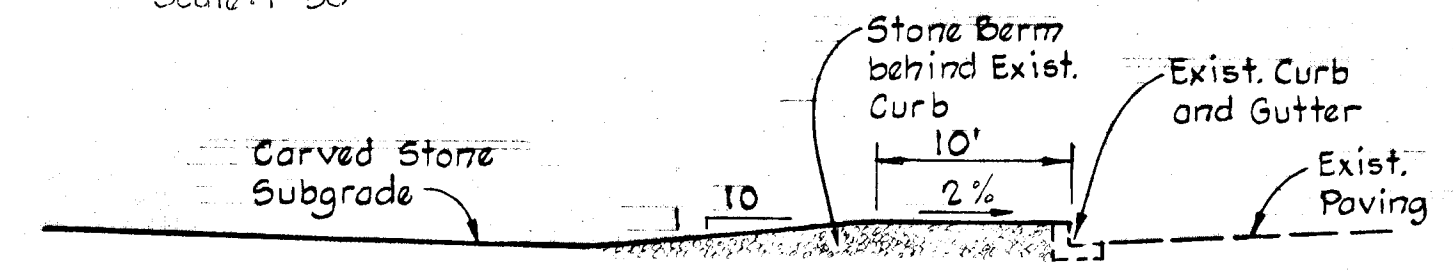


PLAN - SEDIMENT BASIN No. 2
 Scale: 1" = 50'

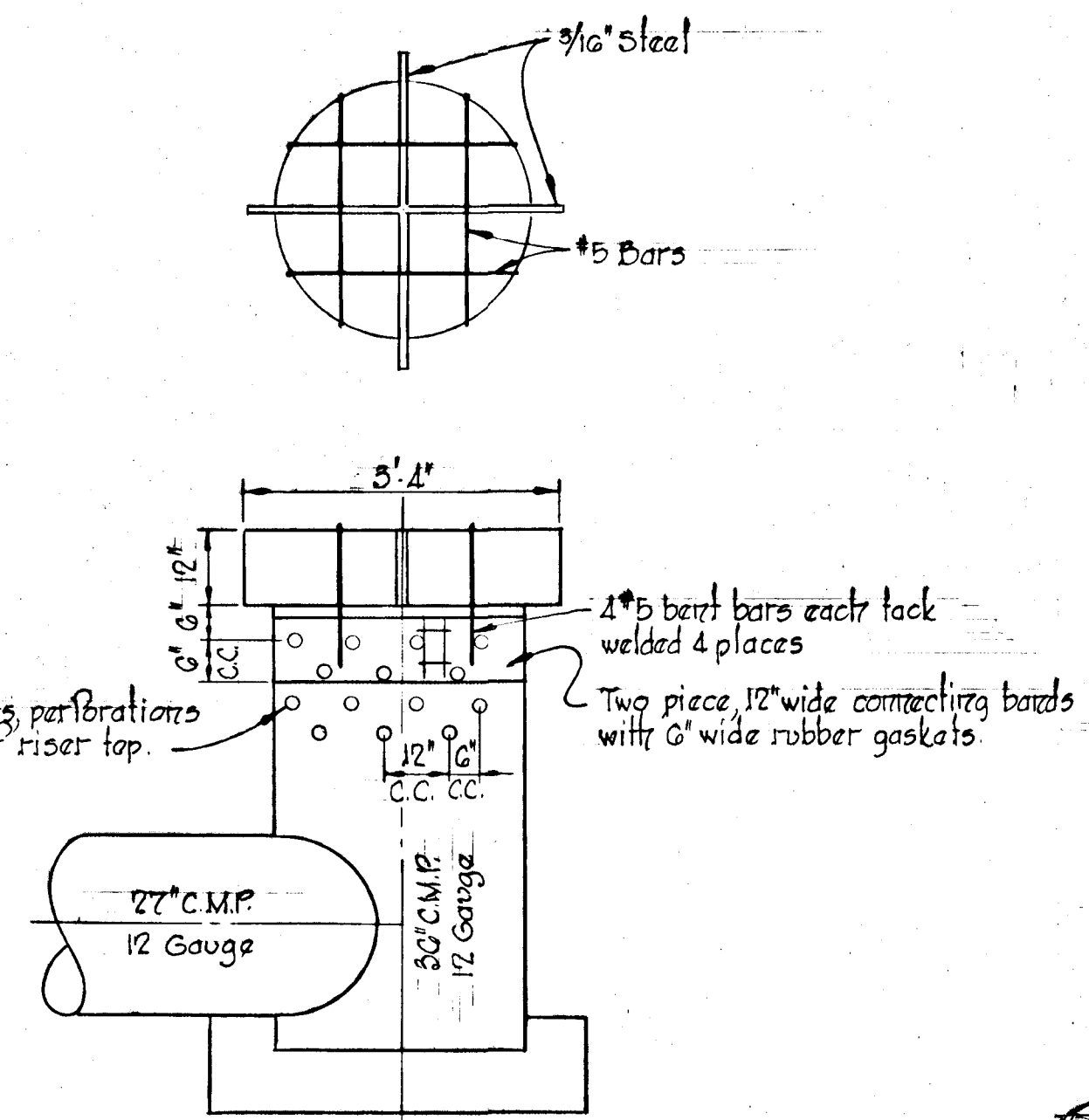


CROSS SECTION THRU DAM - SEDIMENT BASIN No. 2
 No Scale

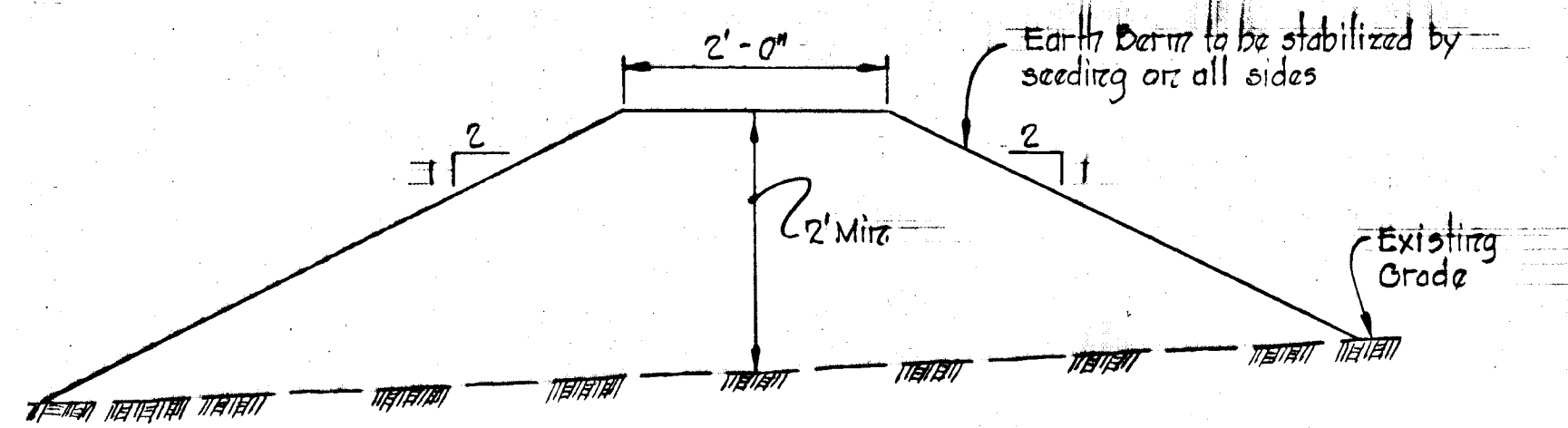
- SEDIMENT CONTROL NOTES**
1. All sediment controls must be constructed prior to any grading.
 2. No temporary sediment control structure may be removed or destroyed without approval of the Howard County Soil Conservation District.
 3. All areas to be seeded shall receive the following mixture: annual rye grass (20%), Kentucky blue grass (20%) and Kentucky 31 fescue (60%) at the rate of 200#/Acre. Sow with mechanical spreader rake, minimum of two (2) passes with "York Zaka", cover and compact with cultipacker. Surface preparation to include ground limestone over topsoil surface area at the rate of 1/2 Ton/Acre (50#/1000#) commercial fertilizer (5-10-10) at the rate of 1/2 Ton/Acre (55#/1000#) superphosphate at the rate of 100#/Acre (15#/1000#).
 4. All inlet openings shall be temporarily sealed with plywood during construction and prior to roadway paving.
 5. Prior to starting grading, the Contractor shall give 24 hours notice to the Howard Soil Conservation District and the Howard County Bureau of Licenses, Inspections and Permits.
 6. All Earthwork stockpiles that will be undisturbed for 3 weeks or longer, shall immediately after piling, be fertilized, limed and seeded with annual Rye grass at rate of 1#/1000 S.F..
 7. For estimate of quantities see Title Sheet, sheet 10 of 7.



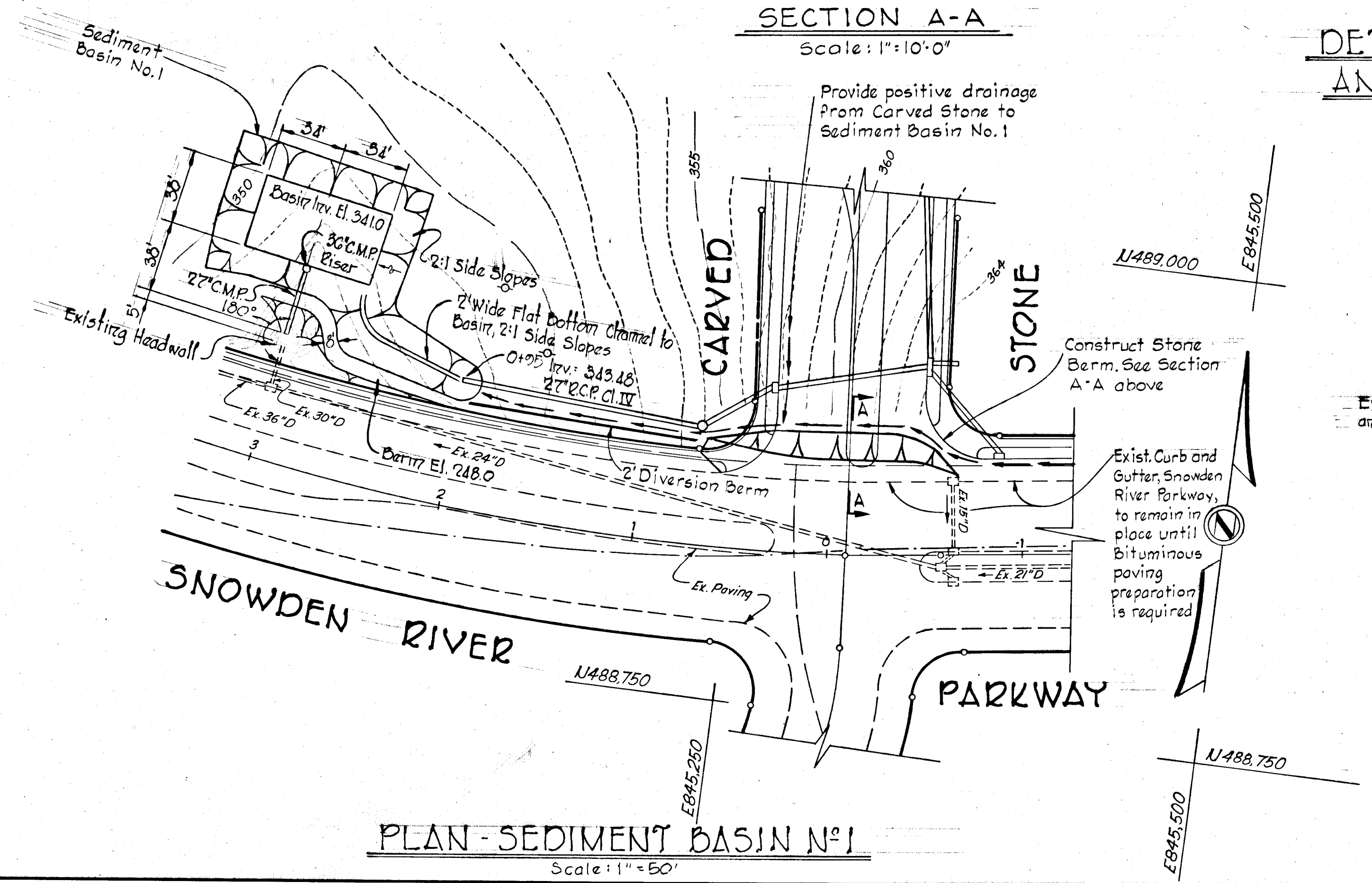
SECTION A-A
 Scale: 1" = 10'-0"



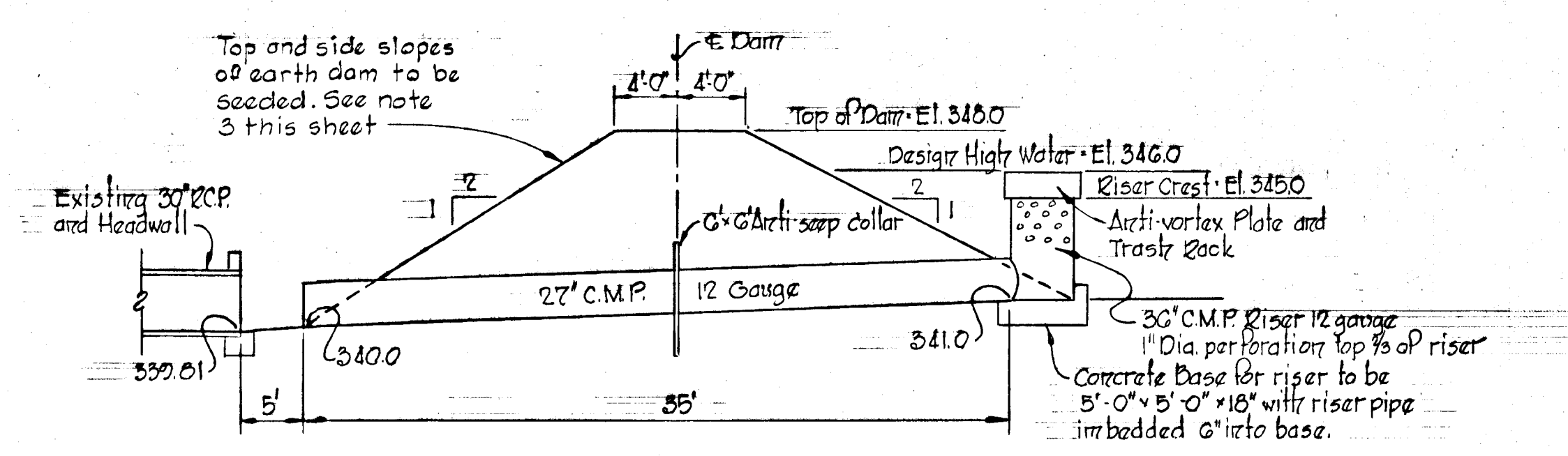
DETAIL ANTI-VORTEX AND TRASH RACK
 No Scale



DETAIL - 2 FOOT DIVERSION BERM
 No Scale



PLAN - SEDIMENT BASIN No. 1
 Scale: 1" = 50'



CROSS SECTION THRU DAM - SEDIMENT BASIN No. 1
 No Scale

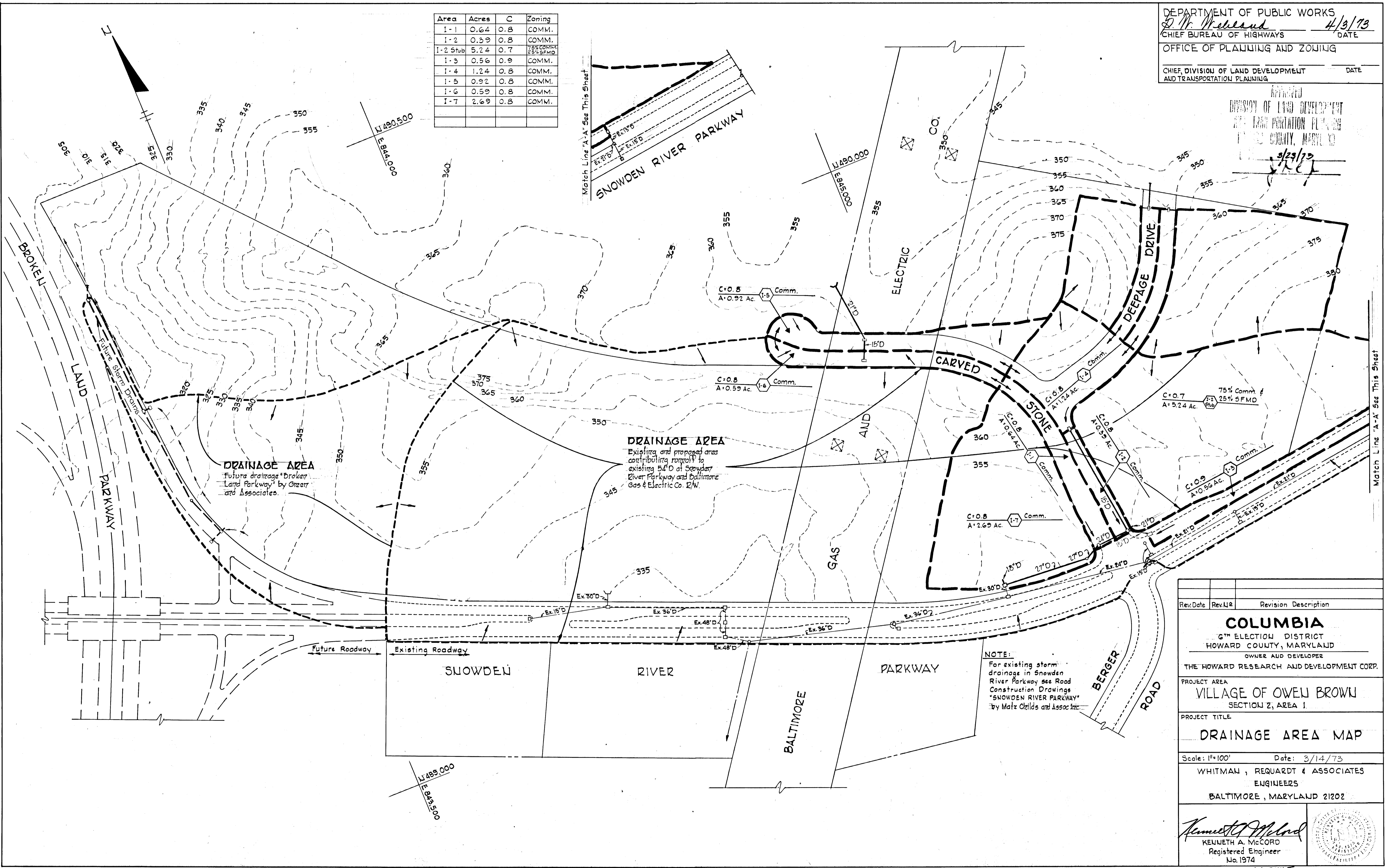
APPROVED
 DIVISION OF LAND DEVELOPMENT
 AND TRANSPORTATION PLANNING
 DATE 3/22/73
 J. H. C.

Rev. Date	Rev. No.	Revision Description
COLUMBIA		
2 ND ELECTION DISTRICT HOWARD COUNTY, MARYLAND OWNER AND DEVELOPER THE HOWARD RESEARCH AND DEVELOPMENT CORP.		
PROJECT AREA VILLAGE OF OWEN BROWN SECTION 2, AREA 1		
PROJECT TITLE SEDIMENT CONTROL PLANS & DETAILS		
Scale: As Shown	Date: 3/14/73	
WHITMAN, REQUARDT & ASSOCIATES ENGINEERS BALTIMORE, MARYLAND 21202		
CERTIFICATION BY THE ENGINEER I certify that this plan for Erosion and Sediment Control represents a practical and workable plan based on my personal knowledge of the site conditions and that it was prepared in accordance with the requirements of the Howard Soil Conservation District. Signature of Engineer: <i>Kenneth A. McCord</i> Date: Jan 1973		KENNETH A. McCORD Registered Engineer No. 1974

DEPARTMENT OF PUBLIC WORKS
K. W. McLeod 4/3/73
 CHIEF BUREAU OF HIGHWAYS DATE
 OFFICE OF PLANNING AND ZONING
 CHIEF DIVISION OF LAND DEVELOPMENT AND TRANSPORTATION PLANNING DATE

APPROVED
 DIVISION OF LAND DEVELOPMENT AND TRANSPORTATION PLANNING
 HOWARD COUNTY, MARYLAND
 3/29/73
[Signature]

Area	Acres	C	Zoning
I-1	0.64	0.8	COMM.
I-2	0.39	0.8	COMM.
I-2 Stub	5.24	0.7	75% COMM. & 25% SFMD
I-3	0.56	0.9	COMM.
I-4	1.24	0.8	COMM.
I-5	0.92	0.8	COMM.
I-6	0.59	0.8	COMM.
I-7	2.69	0.8	COMM.



Rev. Date	Rev. No.	Revision Description

COLUMBIA
 6TH ELECTION DISTRICT
 HOWARD COUNTY, MARYLAND
 OWNER AND DEVELOPER
 THE HOWARD RESEARCH AND DEVELOPMENT CORP.

PROJECT AREA
VILLAGE OF OWEN BROW
 SECTION 2, AREA 1

PROJECT TITLE
DRAINAGE AREA MAP

Scale: 1"=100' Date: 3/14/73
 WHITMAN, REQUARDT & ASSOCIATES
 ENGINEERS
 BALTIMORE, MARYLAND 21202

Kenneth A. McCord
 KENNETH A. McCORD
 Registered Engineer
 No. 1974

AS BUILT
 4/82 MW.