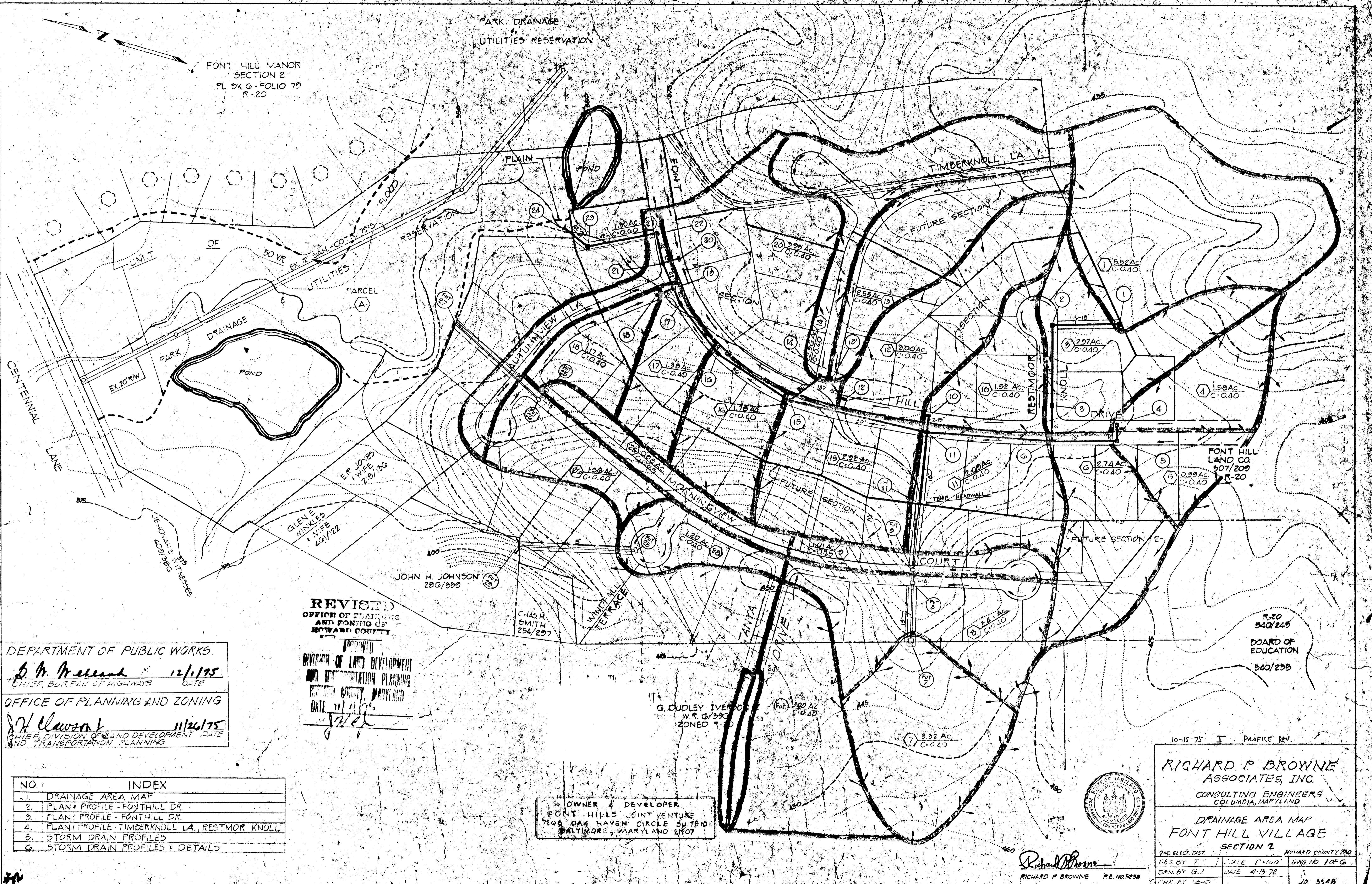


FONT HILL MANOR
SECTION 2
PL BK G-FOLIO 79
R-20

PARK DRAINAGE
UTILITIES RESERVATION



DEPARTMENT OF PUBLIC WORKS
S. M. McKeand 12/1/75
CHIEF, BUREAU OF HIGHWAYS DATE

OFFICE OF PLANNING AND ZONING
J. H. Clawson 11/26/75
CHIEF, DIVISION OF LAND DEVELOPMENT AND TRANSPORTATION PLANNING DATE

REVISED
OFFICE OF PLANNING
AND ZONING OF
HOWARD COUNTY

APPOINTED
DIVISION OF LAND DEVELOPMENT
AND TRANSPORTATION PLANNING
HOWARD COUNTY, MARYLAND
DATE 11/21/75
J. H. Clawson

NO.	INDEX
1.	DRAINAGE AREA MAP
2.	PLAN & PROFILE - FONT HILL DR
3.	PLAN & PROFILE - FONT HILL DR
4.	PLAN & PROFILE - TIMBERKNOLL LA, RESTMOR KNOLL
5.	STORM DRAIN PROFILES
6.	STORM DRAIN PROFILES & DETAILS

OWNER & DEVELOPER
FONT HILLS JOINT VENTURE
7208 OAK HAVEN CIRCLE SUITE 101
BALTIMORE, MARYLAND 21207

R-20
540/245
BOARD OF
EDUCATION
540/255

G. DUDLEY IVERSON
W.R. G/390
ZONED R-20



10-15-75 I PROFILE REV.
RICHARD P. BROWNE
ASSOCIATES, INC.
CONSULTING ENGINEERS
COLUMBIA, MARYLAND

DRAINAGE AREA MAP
FONT HILL VILLAGE
SECTION 2
2ND ELEC. DIST. HOWARD COUNTY 7902
DES. BY T. SCALE 1"=100' DWG. NO. 10P-G
DRN. BY G.J. DATE 4-13-72
CHK. BY J.E.C.P. J.A. 5548

Richard P. Browne
RICHARD P. BROWNE P.E. NO. 5238

STORM DRAINAGE STRUCTURE SCHEDULE				
NO.	TYPE	LOCATION	TOP ELEV.	REMARKS
E-27	Endwall - Type "C"	See Plan	953.75	Ho. Co. St. Dwg. D-52, Pg. 107
F-20	"B-14" Inlet	"	388.04	Ho. Co. St. Dwg. D-52, Pg. 107
F-23	"C" Inlet	"	388.04	Ho. Co. St. Dwg. D-52, Pg. 107

Traffic Note:
Traffic Control Devices, Marking & Signing shall be installed in accordance with the Manual of Uniform Traffic Control Devices.

PARK

DRAINAGE

PLAN

Scale: 1" = 50'

CURVE DATA

Rad. = 200.00'
Δ = 29°00'00"
Chord = N 60°30'00"W --- 100.15'
Arc = 101.29'
Tan. = 51.72'

RESERVATION

DEPARTMENT OF PUBLIC WORKS
B. P. Browne 3/11/75
CHIEF, BUREAU OF HIGHWAYS DATE

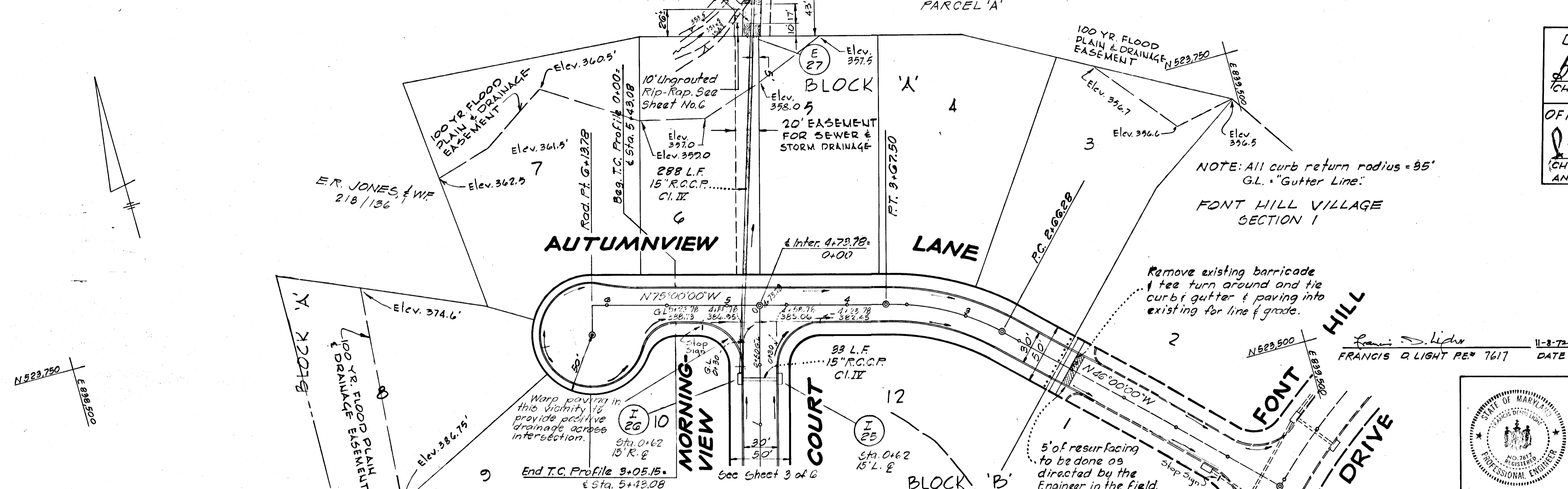
OFFICE OF PLANNING AND ZONING
R. H. Clouston 3/7/75
CHIEF, DIVISION OF LAND DEVELOPMENT DATE AND TRANSPORTATION PLANNING

Rev. Date	Rev. No.	Revision Description

RICHARD P. BROWNE ASSOCIATES
ENGINEERS SURVEYORS PLANNERS ARCHITECTS
PEACHTREE CITY, GEORGIA
COLUMBIA, MD. WAYNE, N. J.

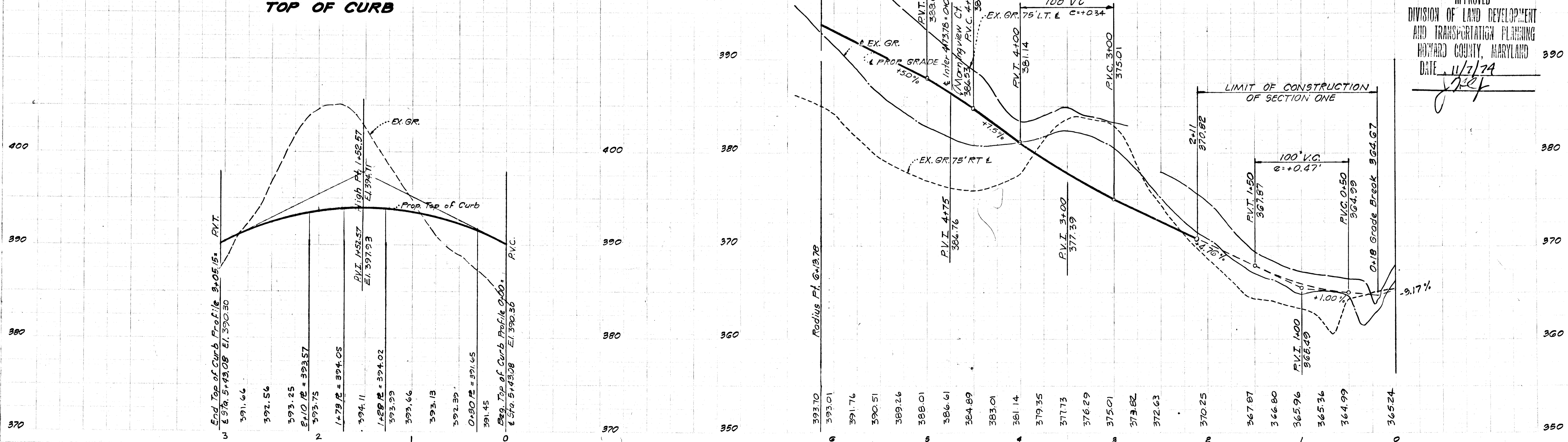
PLAN & PROFILE AUTUMNVIEW LANE

Des. By M.L.C.	Scale As Shown	Dwg. No. 2 of 6
Drn. By G.J.J.	Date 10-13-72	Proj. No. 3348
Chk. By J.C.H.	Approved	



AUTUMNVIEW LANE TOP OF CURB

PROFILE
Scale: Hor. 1" = 50' Vert. 1" = 5'



APPROVED
DIVISION OF LAND DEVELOPMENT AND TRANSPORTATION PLANNING
HOWARD COUNTY, MARYLAND
DATE 11/7/74
J. H. [Signature]

± CURVE DATA

Rad.	= 250.00'
Δ	= 37°00'00"
Chord	= 602.30'
Arc	= 613.48'
Tan.	= 313.70'

PLAN
Scale: 1"=50'
CHAS. H. SMITH
284 / 277

JOHN H. JOHNSON
286 / 339

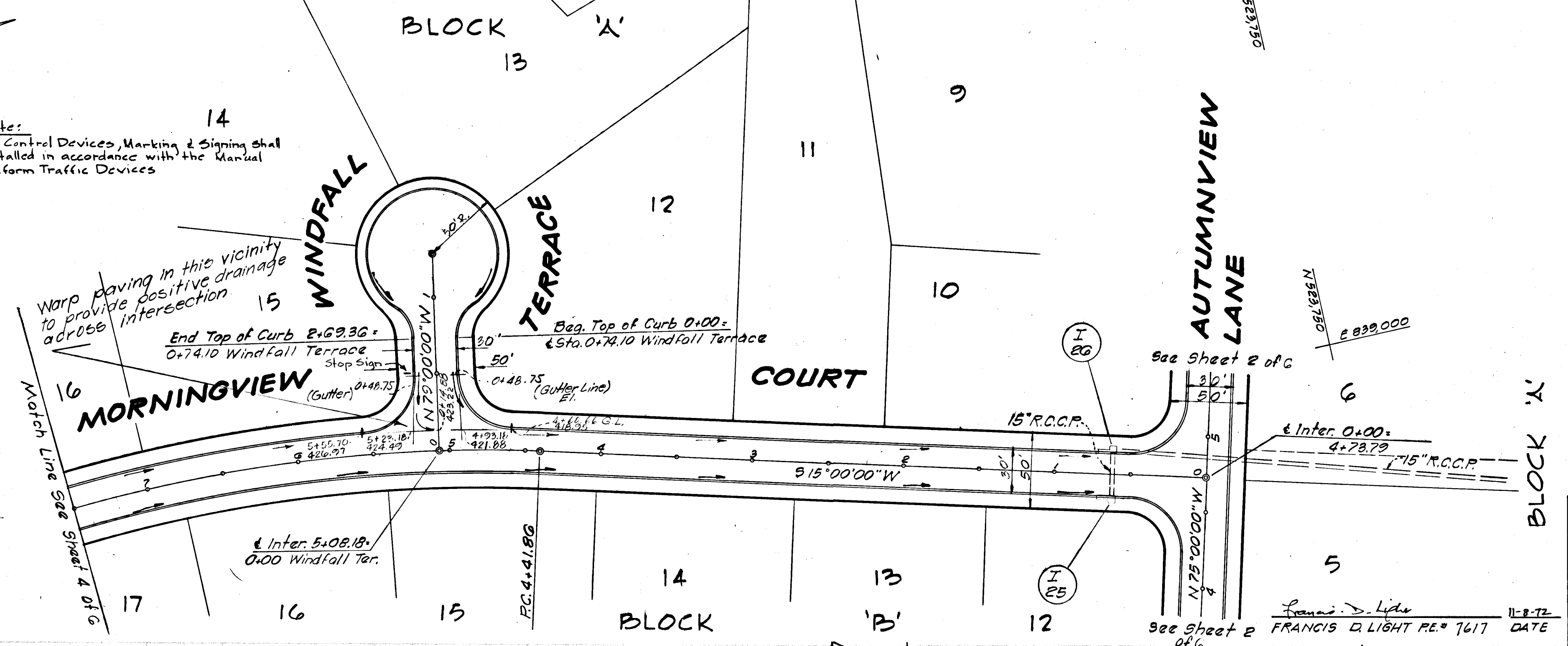
APPROVED
DIVISION OF LAND DEVELOPMENT
AND TRANSPORTATION PLANNING
HOWARD COUNTY, MARYLAND
DATE 11/7/74
[Signature]

DEPARTMENT OF PUBLIC WORKS
[Signature] 3/11/75
CHIEF, BUREAU OF HIGHWAYS DATE
OFFICE OF PLANNING AND ZONING
[Signature] 3/7/75
CHIEF, DIVISION OF LAND DEVELOPMENT DATE
AND TRANSPORTATION PLANNING

Traffic Note:
Traffic Control Devices, Marking & Signing shall be installed in accordance with the Manual of Uniform Traffic Devices

Warp paving in this vicinity to provide positive drainage across intersection

E 838,750
N 132,750
064235N



Rev. Date	Rev. No.	Revision Description

RICHARD P. BROWNE ASSOCIATES
ENGINEERS SURVEYORS PLANNERS ARCHITECTS
PEACHTREE CITY, GEORGIA
COLUMBIA, MD. WAYNE, N. J.

PLAN & PROFILE WINDFALL TERRACE MORNINGVIEW COURT

Des. By M.L.C.	Scale As Shown	Dwg. No. 3 of 6
Drn. By G.J.J.	Date 10-13-72	Proj. No. 3346
Chk. By J.C.H.	Approved	



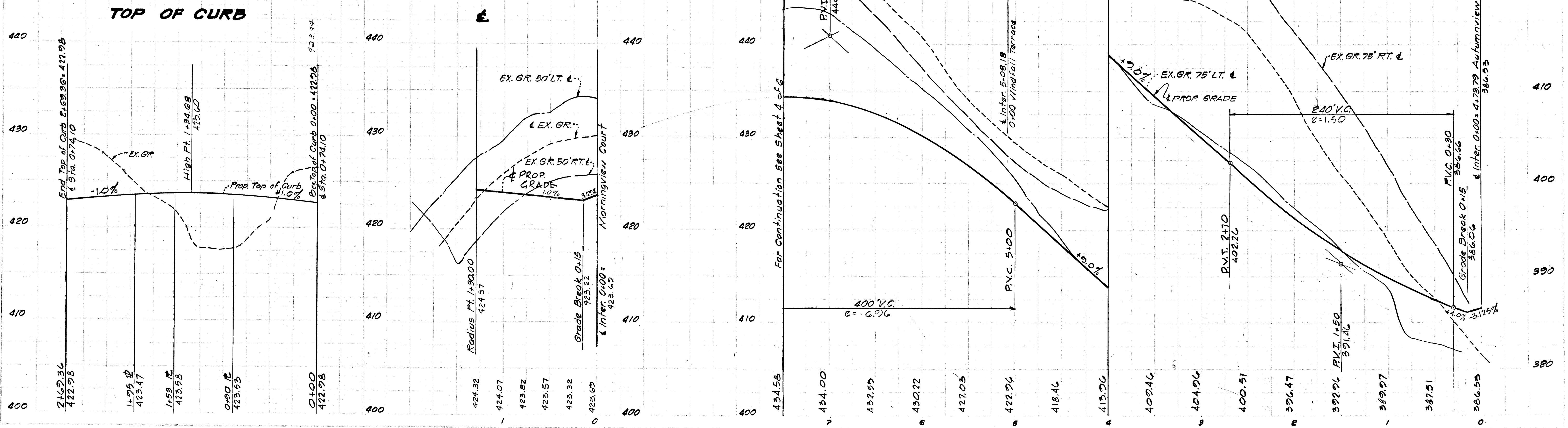
WINDFALL

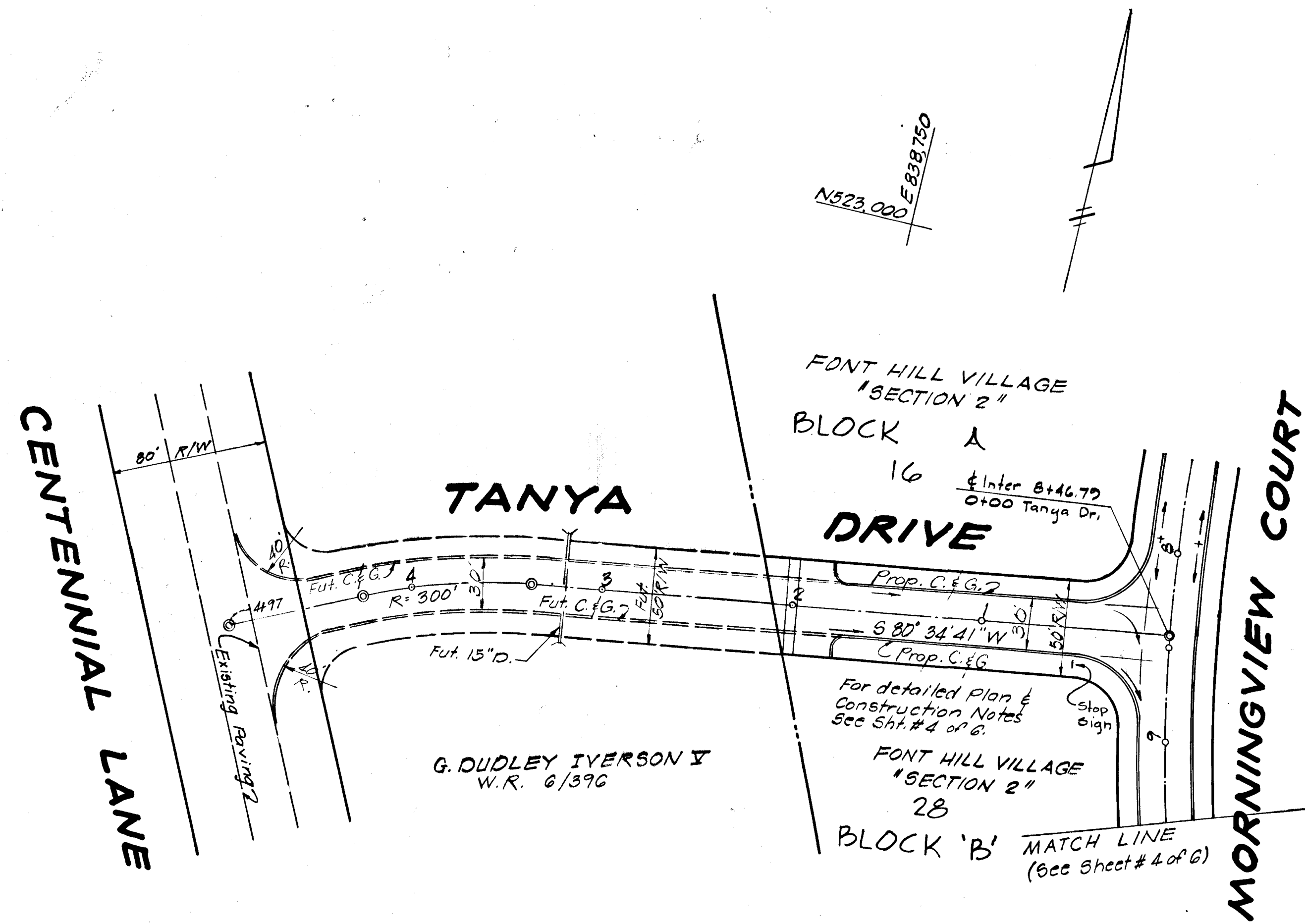
TERRACE

PROFILE
Scale: Hor. 1"=50'
Vert. 1"=5'

MORNINGVIEW

COURT



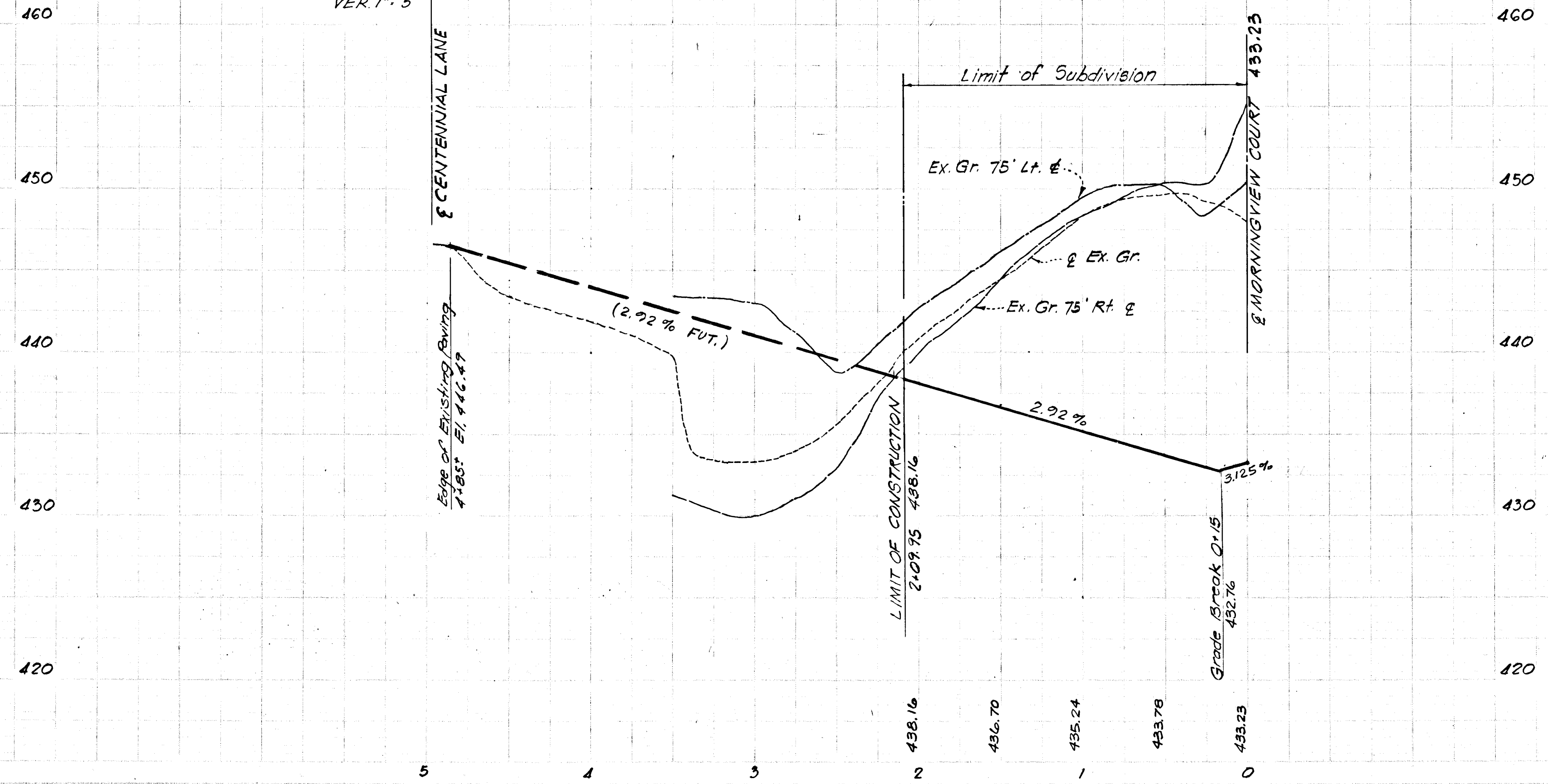


Traffic Note:
Traffic Control Devices, Marking & Signing
Shall Be Installed in accordance with the
Manual of Uniform Traffic Control Devices.

PLAN
SCALE: 1" = 50'

Francis D. Light
FRANCIS D. LIGHT P.E. #7617 DATE

PROFILE
SCALE: HOR. 1" = 50'
VER. 1" = 5'



DEPARTMENT OF PUBLIC WORKS
L. W. McLeod 3/11/75
CHIEF, BUREAU OF HIGHWAYS DATE

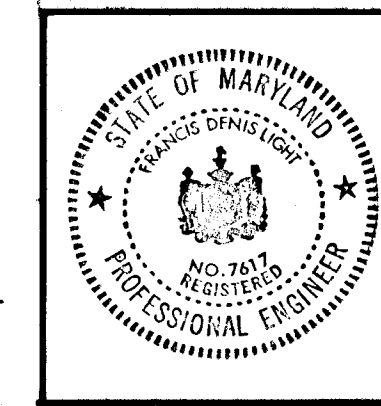
OFFICE OF PLANNING AND ZONING
J. H. Clouston 3/7/75
CHIEF, DIVISION OF LAND DEVELOPMENT DATE
AND TRANSPORTATION PLANNING

Rev. Date	Rev. No.	Revision Description

RICHARD P. BROWNE ASSOCIATES ENGINEERS SURVEYORS PLANNERS ARCHITECTS
PEACHTREE CITY, GEORGIA
COLUMBIA, MD. WAYNE, N. J.

PLAN & PROFILE
TANYA DRIVE

Des. By W.H.N.	Scale As Shown	Dwg. No. 5 of 6
Drn. By W.H.N.	Date 1-16-73	Proj. No. 3348
Chk. By J.C.H.	Approved	



APPROVED
DIVISION OF LAND DEVELOPMENT
AND TRANSPORTATION PLANNING
HOWARD COUNTY, MARYLAND
DATE 1/17/74
J. H. Clouston

