

DEPARTMENT OF PUBLIC WORKS  
*B. N. McLeod* 11/13/72  
 CHIEF, BUREAU OF HIGHWAYS DATE

OFFICE OF PLANNING AND ZONING  
*R. L. ...* 11-9-72  
 CHIEF, DIVISION OF LAND DEVELOPMENT AND TRANSPORTATION PLANNING DATE

# COLUMBIA

HOWARD COUNTY, MARYLAND  
 6<sup>TH</sup> ELECTION DISTRICT

## ROAD CONSTRUCTION PLANS VILLAGE OF LONGREACH SECTION 1 AREA 6 RESUBDIVISION OF PARCEL "A"

SHEET INDEX	
NO.	DESCRIPTION
1 OF 5	TITLE SHEET
2 OF 5	BELLFALL COURT AND HOBNAIL COURT - PLAN AND PROFILE
3 OF 5	RED CART COURT AND LAPWING COURT - PLAN AND PROFILE
4 OF 5	STORM DRAIN PROFILES, OPEN CHANNEL SECTIONS
5 OF 5	STORM DRAIN AND CURB AND GUTTER DETAILS

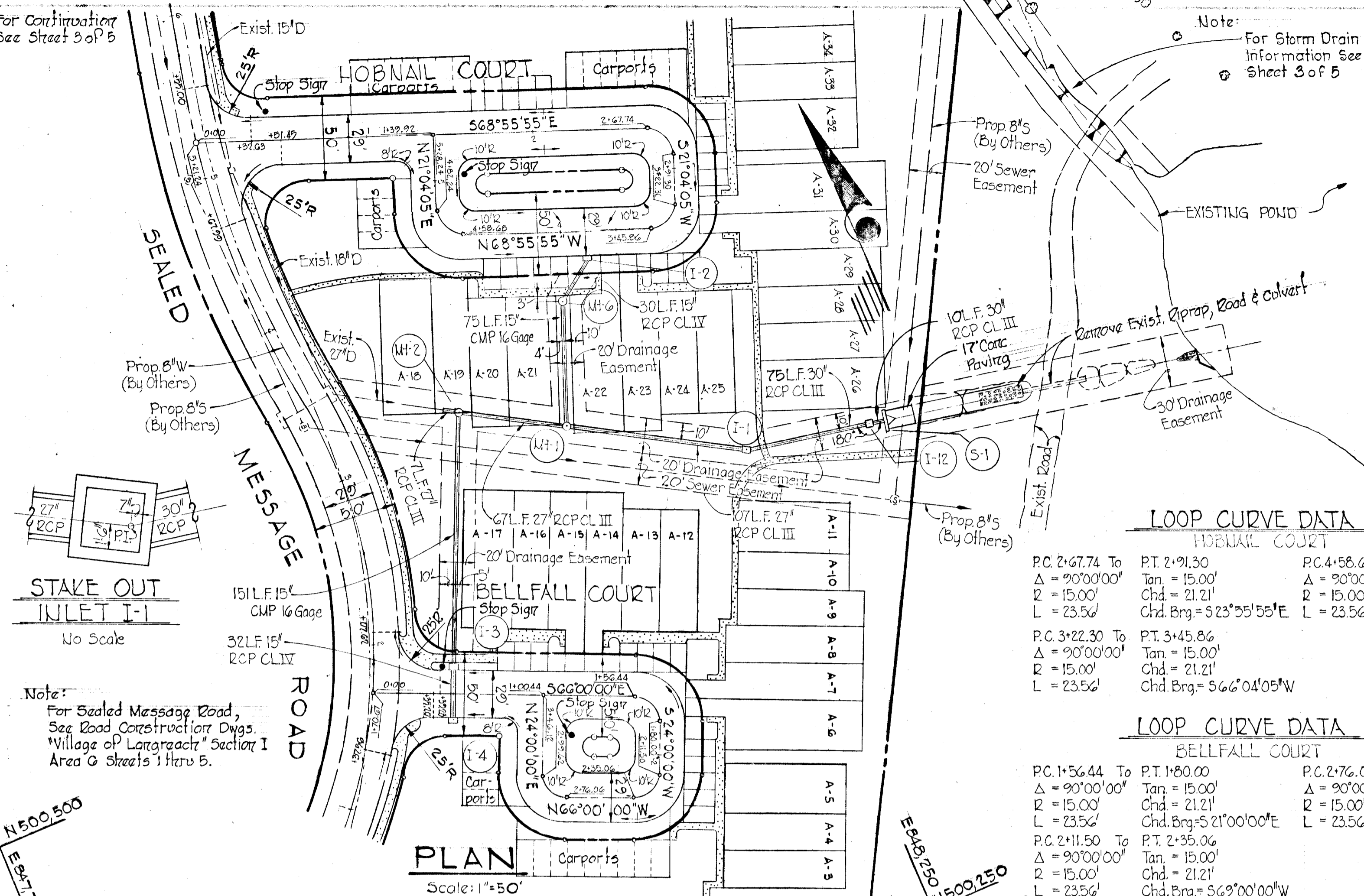
RECEIVED  
 DIVISION OF LAND DEVELOPMENT  
 AND TRANSPORTATION PLANNING  
 HOWARD COUNTY, MARYLAND  
 DATE 10/31/72  
*[Signature]*

F-13-22c

A/E

#160  
 11-7 GGA2-2

For Continuation See Street 3 of 5



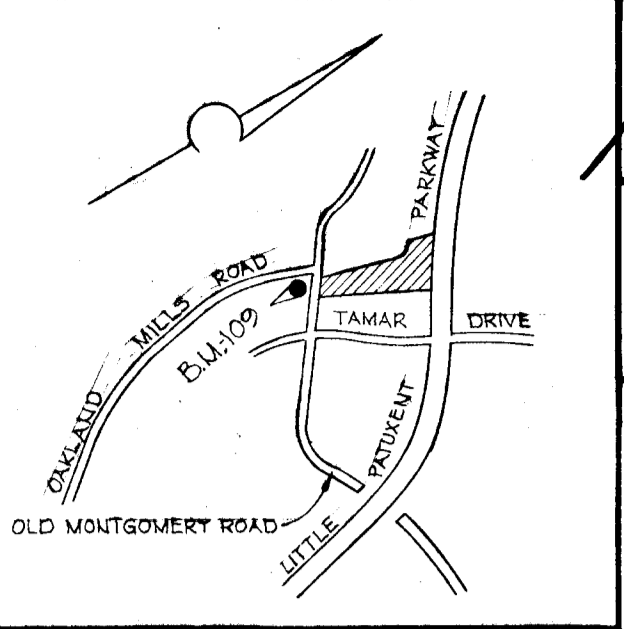
Note:  
For Sealed Message Road, See Road Construction Dwg. "Village of Longreach" Section I Area G Streets 1 thru 5.

N500.500  
E847.150

PLAN  
Scale: 1"=50'

**GENERAL NOTES**

- Bench Mark U-109 - Elev. 416.42, 410' south east of the centerline of Oakland Mills Road, 17.0' west of the centerline of Old Montgomery Road, 3.0' south of a pole #24145, 2.0' north east of a metal witness post, set in concrete post projecting 2'.
- All work shall be done in accordance with the Howard County Road Construction Code and Standard Specifications.
- All utility companies must be notified 24 hours in advance of any construction.
- Secondary residential streets are designed for 25 M.P.H. traffic speed in accordance with AASHTO Standards.
- All inlets shall be Howard County Standard unless otherwise shown. All inlets shall be depressed.
- Storm drain trenches within road rights-of-way shall be backfilled and compacted in accordance with Howard County Road Code.
- Speed limit for loop portions of streets shall be 15 M.P.H.
- The installation of Traffic Control Devices, Marking and Signing shall be in accordance with the Manual of Uniform Traffic Control Devices, 1971 Edition.



VICINITY MAP  
Scale: 1"=2,000'

**LOOP CURVE DATA**  
HOBNAIL COURT

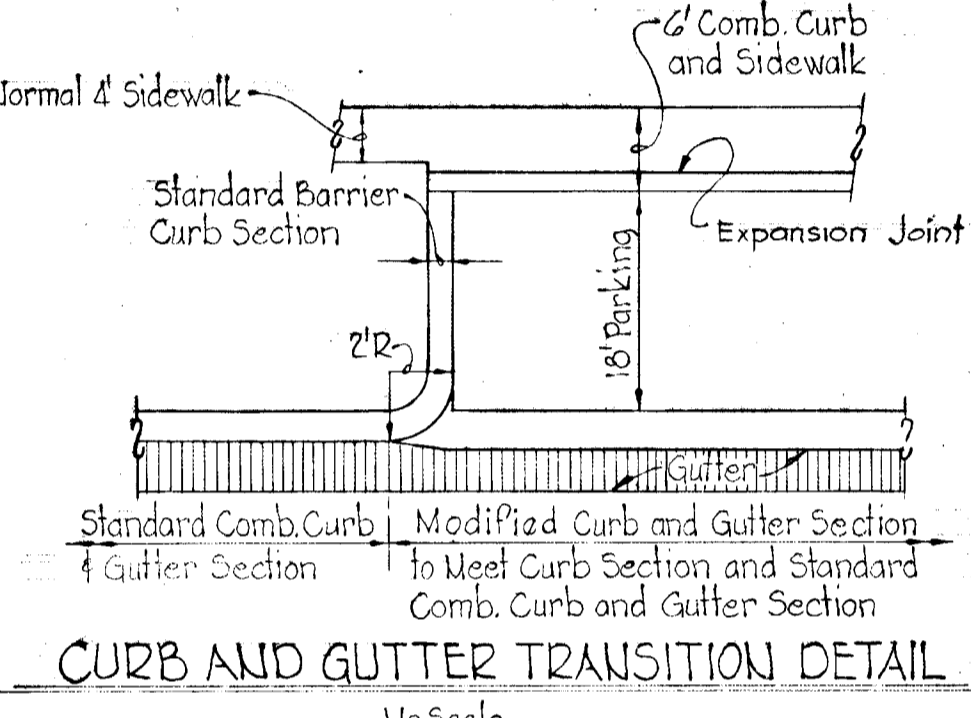
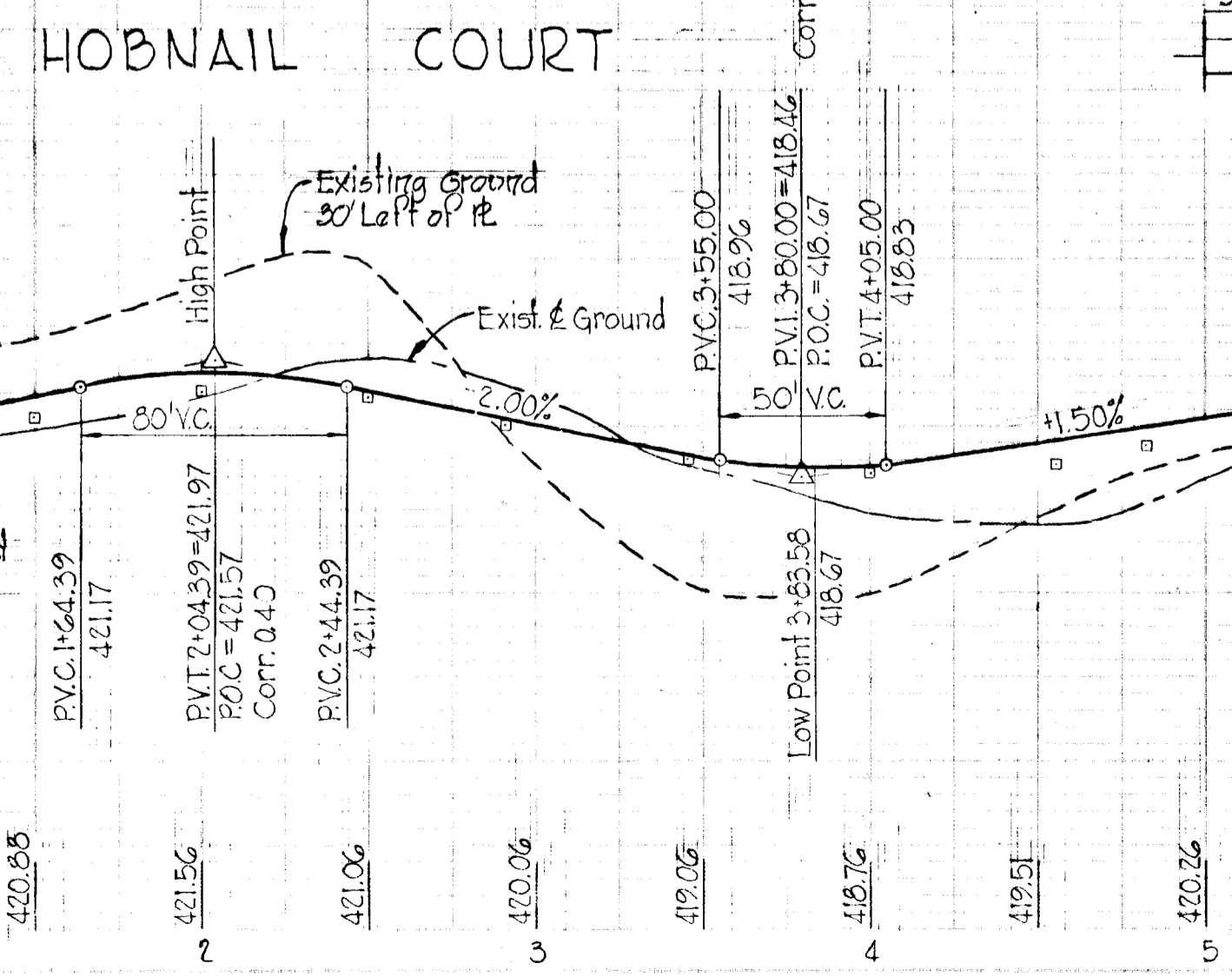
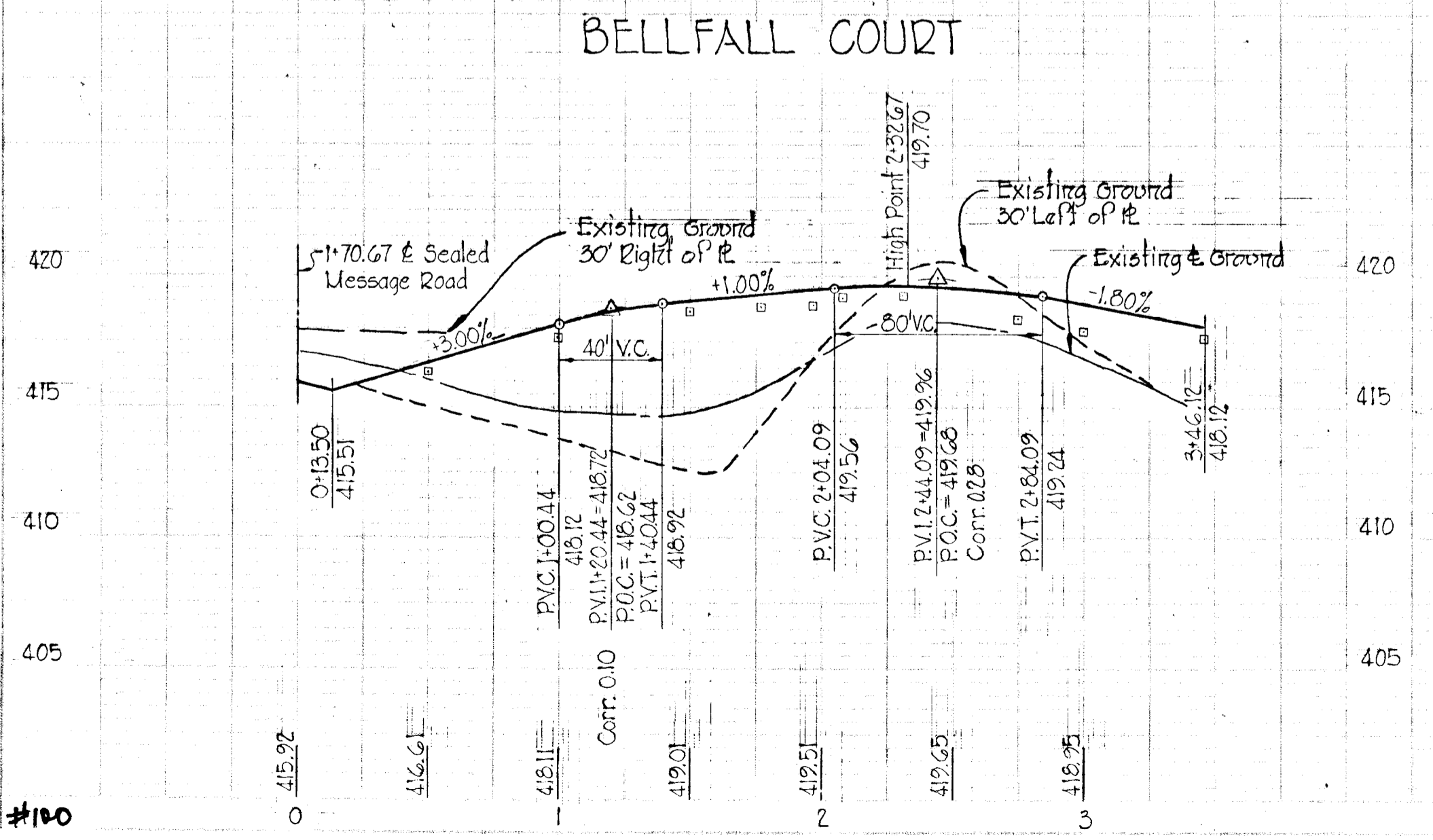
PC: 2+67.74 To Δ = 20'00"00" R = 15.00' L = 23.56'	PT: 2+91.30 Tan = 15.00' Chd. = 21.21'	P.C. 4+58.68 To Δ = 20'00"00" R = 15.00' L = 23.56'	PT: 4+82.74 Tan = 15.00' Chd. = 21.21'
---	--	--	--

**LOOP CURVE DATA**  
BELLFALL COURT

PC: 1+56.44 To Δ = 20'00"00" R = 15.00' L = 23.56'	PT: 1+80.00 Tan = 15.00' Chd. = 21.21'	P.C. 2+76.06 To Δ = 20'00"00" R = 15.00' L = 23.56'	PT: 2+99.62 Tan = 15.00' Chd. = 21.21'
---	--	--	--

**PROFILE**

Scale: Hor. 1"=50'  
Vert. 1"=5'



CURB AND GUTTER TRANSITION DETAIL  
No Scale

**STORM DRAIN STRUCTURE SCHEDULE**

No.	Type	Top Elev. In	Top Elev. Out	Location
I-1	"C" Inlet See Detail Street	411.63	409.89	See Plan and Profile (4 Sides Open)
I-2	"A-B" Inlet width = 25"	418.70	415.01	Inlet 15.75' left of Sta. 3+04.00
I-3	"A-B" Inlet width = 25"	416.68	411.96	Inlet 15.75' left of Sta. 0+47
I-4	"A-B" Inlet width = 25"	416.68	412.40	Inlet 15.75' right of Sta. 0+47
I-5	"C" Inlet See Detail Street	409.33	405.23	See Plan and Profile (4 Sides Open)
I-6	"C" Inlet See Detail Street	412.55	408.93	See Plan and Profile (3 Sides Open)
I-7	"A-B" Inlet width = 25"	423.30	418.82	Inlet 15.75' right of Sta. 10+02.00
I-8	"A-B" Inlet width = 25"	427.47	422.63	Inlet 15.75' left of Sta. 15+25
I-9	"A-B" Inlet width = 25"	427.40	422.60	Inlet 15.75' right of Sta. 15+25
I-10	"C" Inlet See Detail Street	420.63	416.30	See Plan and Profile (3 Sides Open)
I-11	"A-B" Inlet width = 25"	429.60	429.00	Inlet 15.75' left of Sta. 2+09.00
I-12	"C" Inlet See Detail Street	410.00	404.97	See Plan and Profile (4 Sides Open)
MH-1	Standard Manhole	414.40	407.54	See Plan and Profile
MH-2	Standard Manhole	419.14	408.54	See Plan and Profile
MH-3	Standard Manhole	419.0	412.04	See Plan and Profile
MH-4	Standard Manhole	419.0	413.48	See Plan and Profile
MH-5	Standard Manhole	431.0	424.46	See Plan and Profile
MH-6	Standard Manhole	421.9	414.64	See Plan and Profile
S-1	"C" Endwall	407.37	409.57	See Plan and Profile
S-2	"C" Endwall	408.60	409.18	See Plan and Profile

DEPARTMENT OF PUBLIC WORKS  
*D. H. Heiland* 11/13/72  
CHIEF, BUREAU OF HIGHWAYS DATE  
OFFICE OF PLANNING AND ZONING  
CHIEF, DIVISION OF LAND DEVELOPMENT AND TRANSPORTATION PLANNING DATE

Field-run profile grade elevations taken on March 29, 1974  
(Paper as-built copy signed by Kenneth A. McCord)

9-3-74 1 As-Built  
Rev. Date Rev. No. Revision Description  
**COLUMBIA**  
6<sup>TH</sup> ELECTION DISTRICT  
HOWARD COUNTY, MARYLAND  
OWNER AND DEVELOPER  
HOWARD HOMES, INC.

PROJECT AREA  
**VILLAGE OF LONGREACH**  
SECTION I, AREA A  
RESUBDIVISION OF PARCEL A'

PROJECT TITLE  
PLAN AND PROFILE  
BELLFALL COURT AND HOBNAIL COURT

SCALE: As Shown DATE

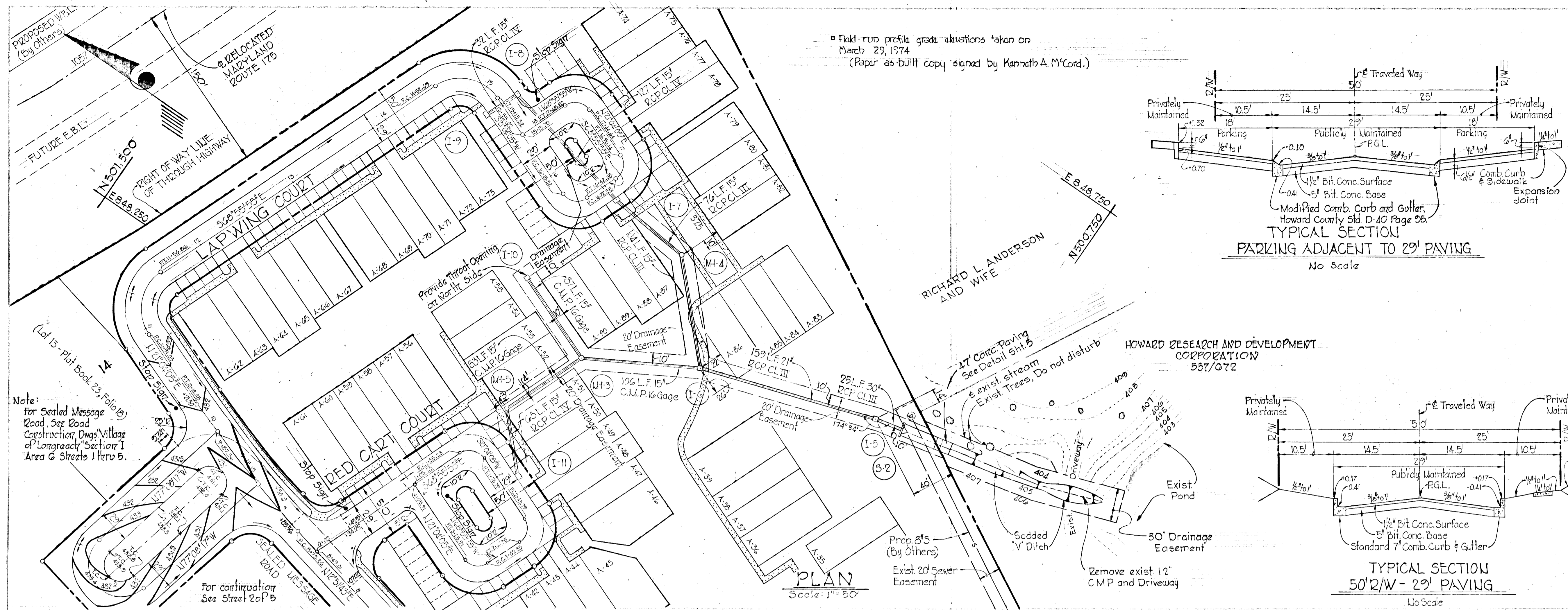
WHITMAN, REQUARDT & ASSOCIATES  
ENGINEERS  
BALTIMORE, MARYLAND 21202

*Kenneth A. McCord*  
KENNETH A. MCCORD  
Registered Engineer  
No. 1974

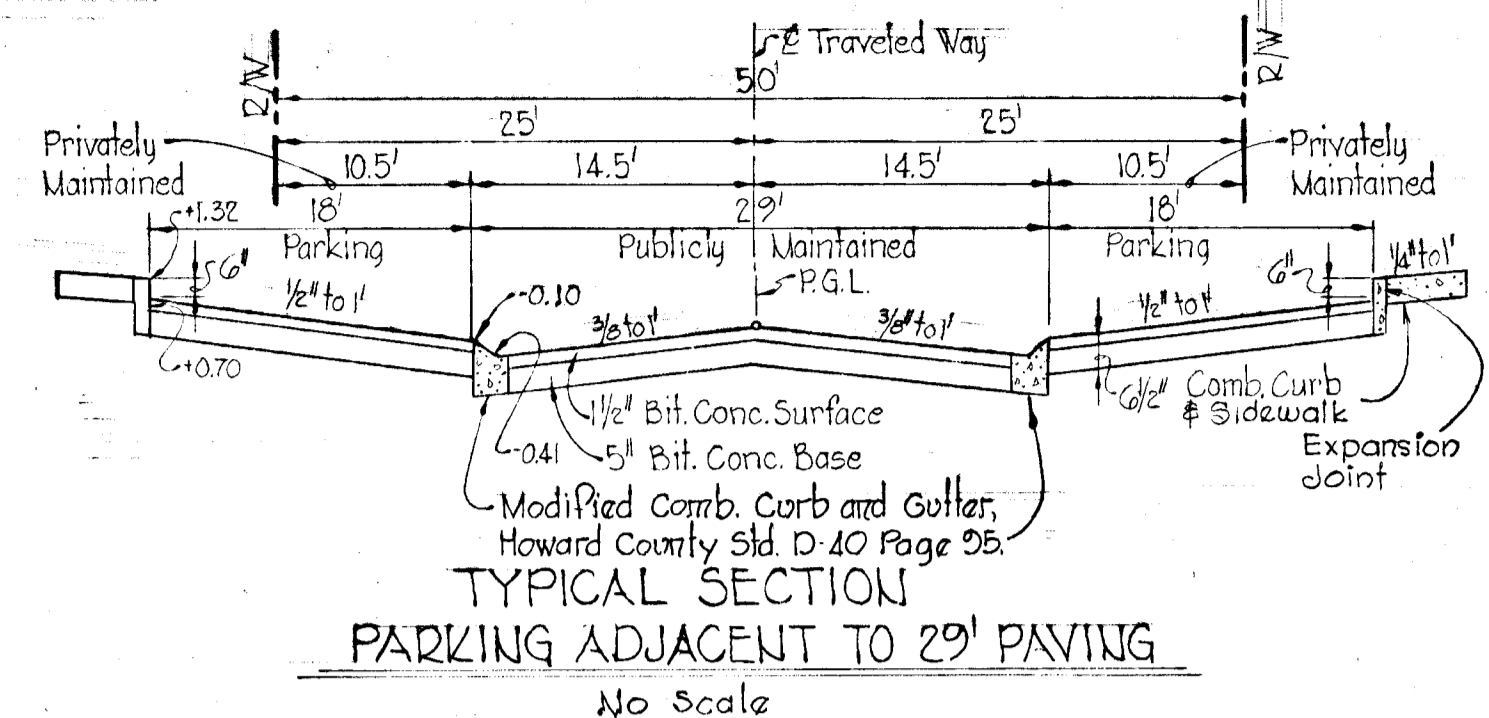
APPROVED  
DIVISION OF LAND DEVELOPMENT AND TRANSPORTATION PLANNING  
HOWARD COUNTY, MARYLAND  
DATE 10/31/72

F-73-22c

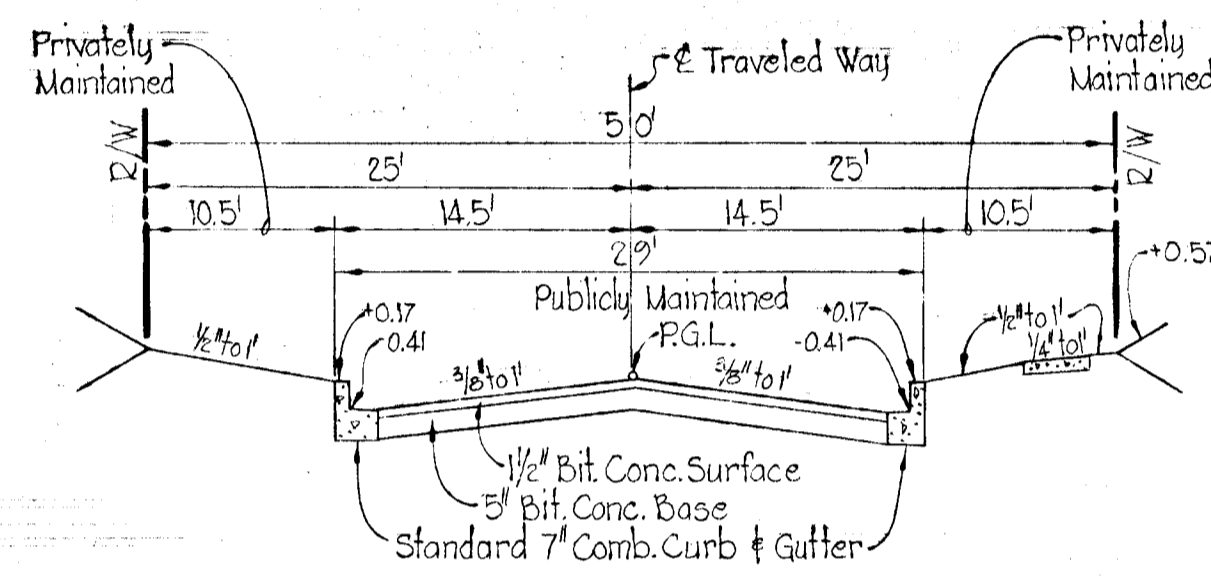




Field-run profile grade elevations taken on  
March 29, 1974  
(Paper as-built copy signed by Kenneth A. McCord.)



TYPICAL SECTION  
PARKING ADJACENT TO 29' PAVING  
No Scale



TYPICAL SECTION  
50' R/W - 29' PAVING  
No Scale

Note:  
For Sealed Message  
Road, See Road  
Construction Drawings Village  
of Longreach, Section 1  
Area G Streets 1 thru 5.

For continuation  
See Street 20' P/B

LOOP CURVE DATA  
RED CART COURT

PC: 1+55.23 To PT: 1+76.79 Δ = 90°00'00" R = 15.00' L = 23.56'	PT: 1+76.79 Tan = 15.00' Chd. = 21.21' Chd. Brng. = S 23°55'55"E
PC: 2+43.79 To PT: 2+61.35 Δ = 90°00'00" R = 15.00' L = 23.56'	PT: 2+61.35 Tan = 15.00' Chd. = 21.21' Chd. Brng. = S 66°04'05"W
PC: 3+02.35 To PT: 3+25.91 Δ = 90°00'00" R = 15.00' L = 23.56'	PT: 3+25.91 Tan = 15.00' Chd. = 21.21' Chd. Brng. = N 23°55'55"W

CURVE DATA  
LAPWING COURT

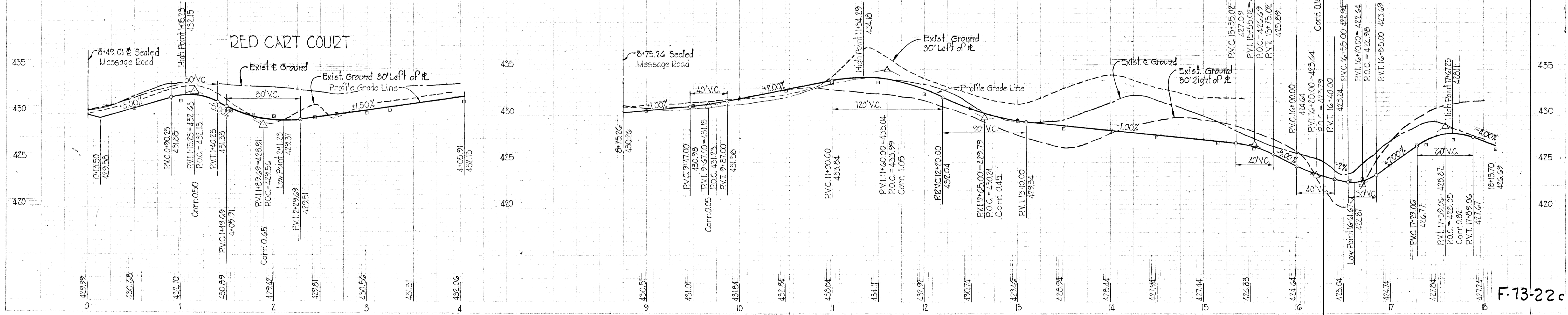
PC: 8+75.26 To PT: 10+18.48 Δ = 8°12'22" R = 1,000.00' L = 143.22'	PT: 10+18.48 Tan = 71.73' Chd. = 143.10' Chd. Brng. = N 11°57'54"E
PC: 10+94.03 To PT: 11+56.86 Δ = 90°00'00" R = 40.00' L = 62.83'	PT: 11+56.86 Tan = 40.00' Chd. = 56.57' Chd. Brng. = N 66°04'05"E
PC: 14+52.69 To PT: 15+15.82 Δ = 90°00'00" R = 40.00' L = 62.83'	PT: 15+15.82 Tan = 40.00' Chd. = 56.57' Chd. Brng. = S 23°55'55"E

LOOP CURVE DATA  
LAPWING COURT

PC: 16+72.83 To PT: 16+96.14 Δ = 90°00'00" R = 15.00' L = 23.56'	PT: 16+96.14 Tan = 15.00' Chd. = 21.21' Chd. Brng. = S 23°55'55"E
PC: 16+72.83 To PT: 16+96.14 Δ = 90°00'00" R = 15.00' L = 23.56'	PT: 16+96.14 Tan = 15.00' Chd. = 21.21' Chd. Brng. = N 66°04'05"E
PC: 17+44.64 To PT: 17+68.20 Δ = 90°00'00" R = 15.00' L = 23.56'	PT: 17+68.20 Tan = 15.00' Chd. = 21.21' Chd. Brng. = N 23°55'55"W

PROFILE

Scale: Hor. 1" = 50'  
Vert. 1" = 5'



DEPARTMENT OF PUBLIC WORKS  
D. N. McNeel  
CHIEF, BUREAU OF HIGHWAYS  
11/13/72  
DATE

OFFICE OF PLANNING AND ZONING  
CHIEF, DIVISION OF LAND DEVELOPMENT AND TRANSPORTATION PLANNING  
DATE

Notes:  
1. Standard 7" Comb. curb and gutter shall be in accordance with County Standard D-40, Page 95.  
2. Paving (6%) shall be in accordance with County Standard D-11, Page 66.  
3. Transition from Standard 7" Comb. curb and gutter to depressed curb and gutter shall be in accordance with detail shown on Div. 4 of 4.  
4. Back Coat is required in accordance with Section C-31.4 of the Howard County Road Construction Code and Standard Spec.  
5. These will be printed in accordance with C-30.9 as provided in the Howard County Road Construction Code and Standard Spec.

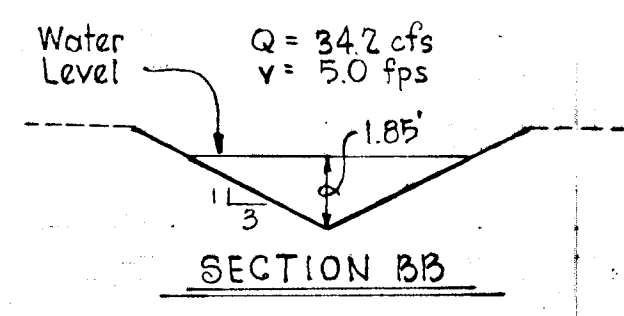
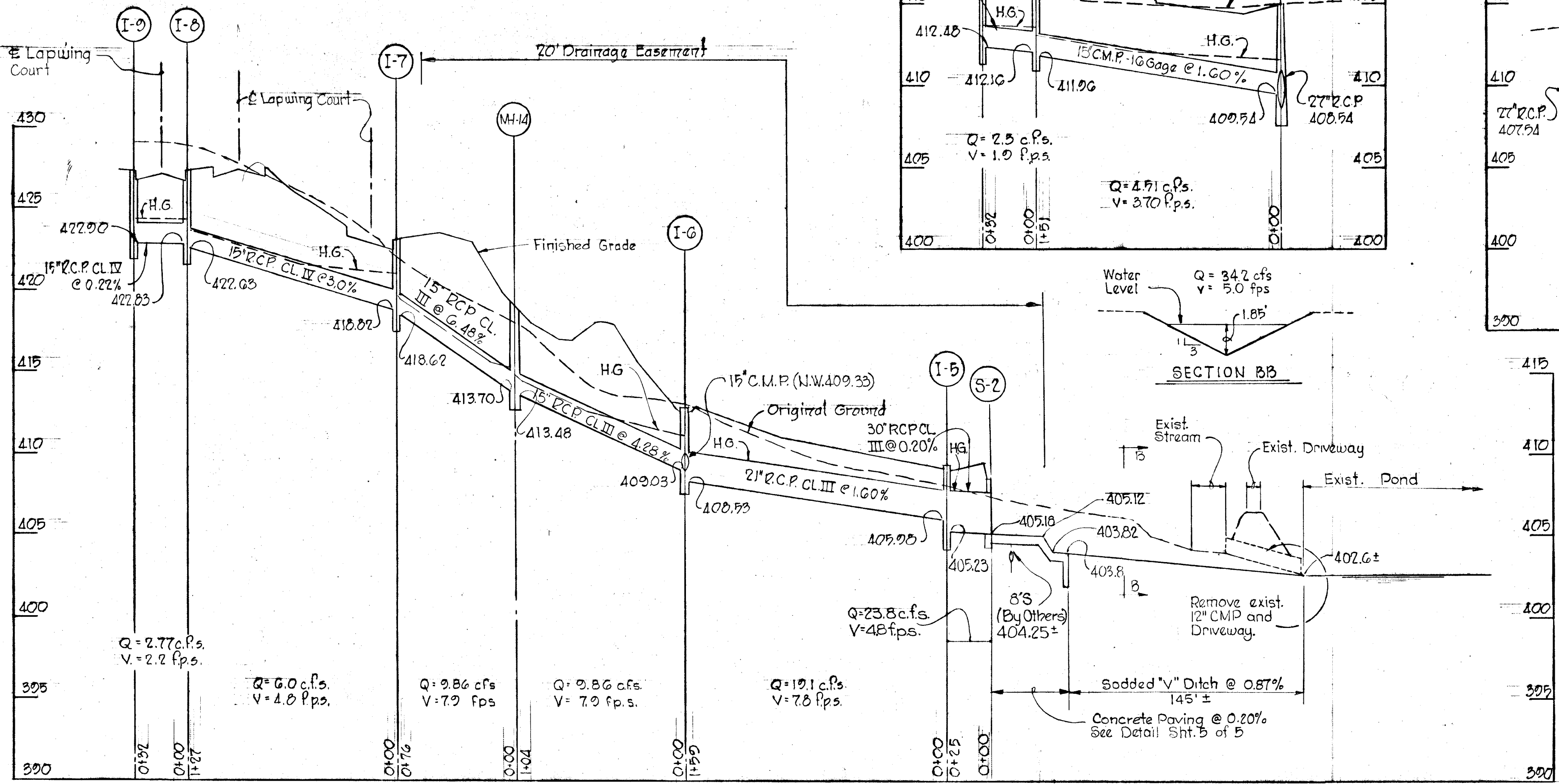
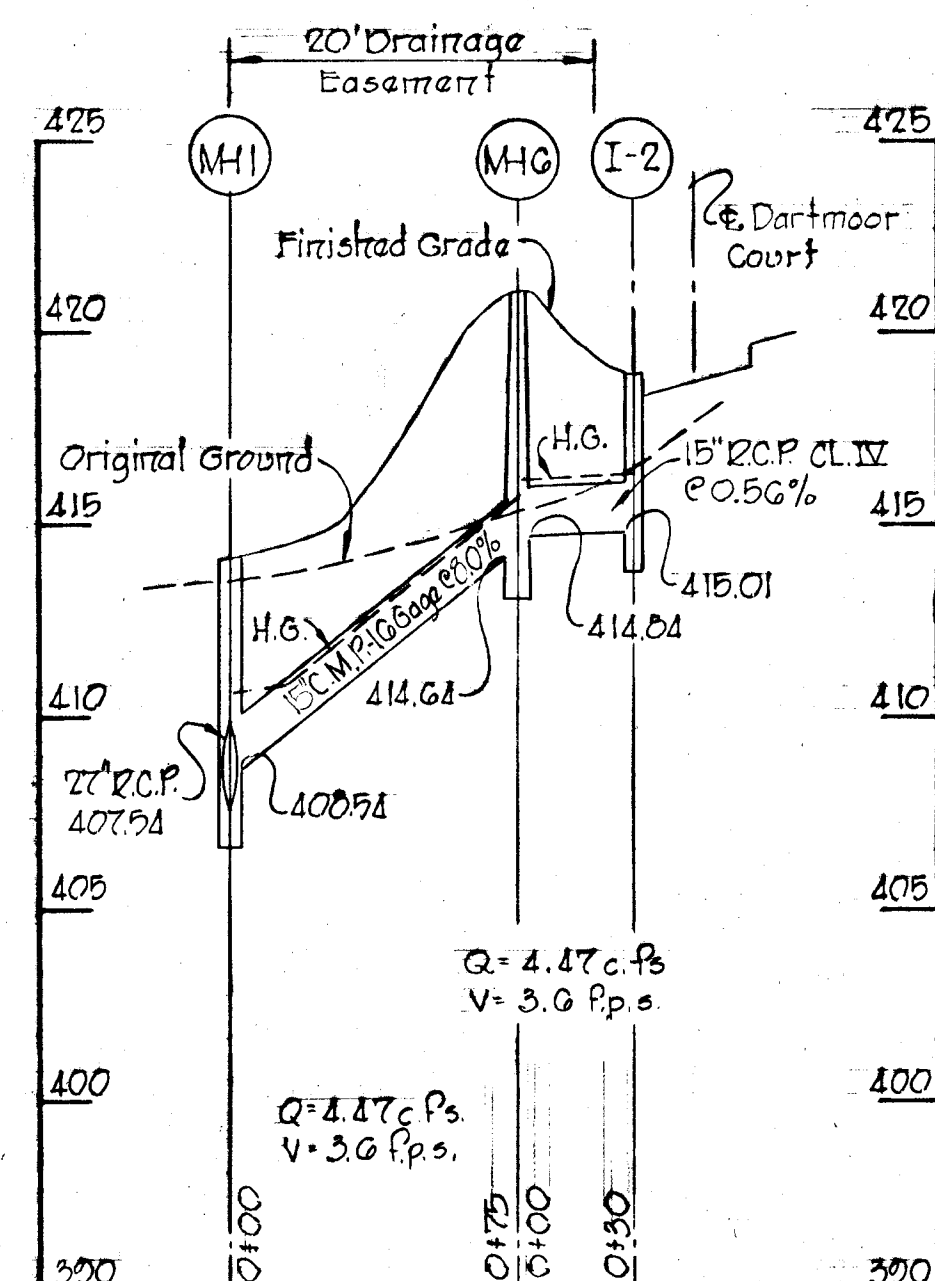
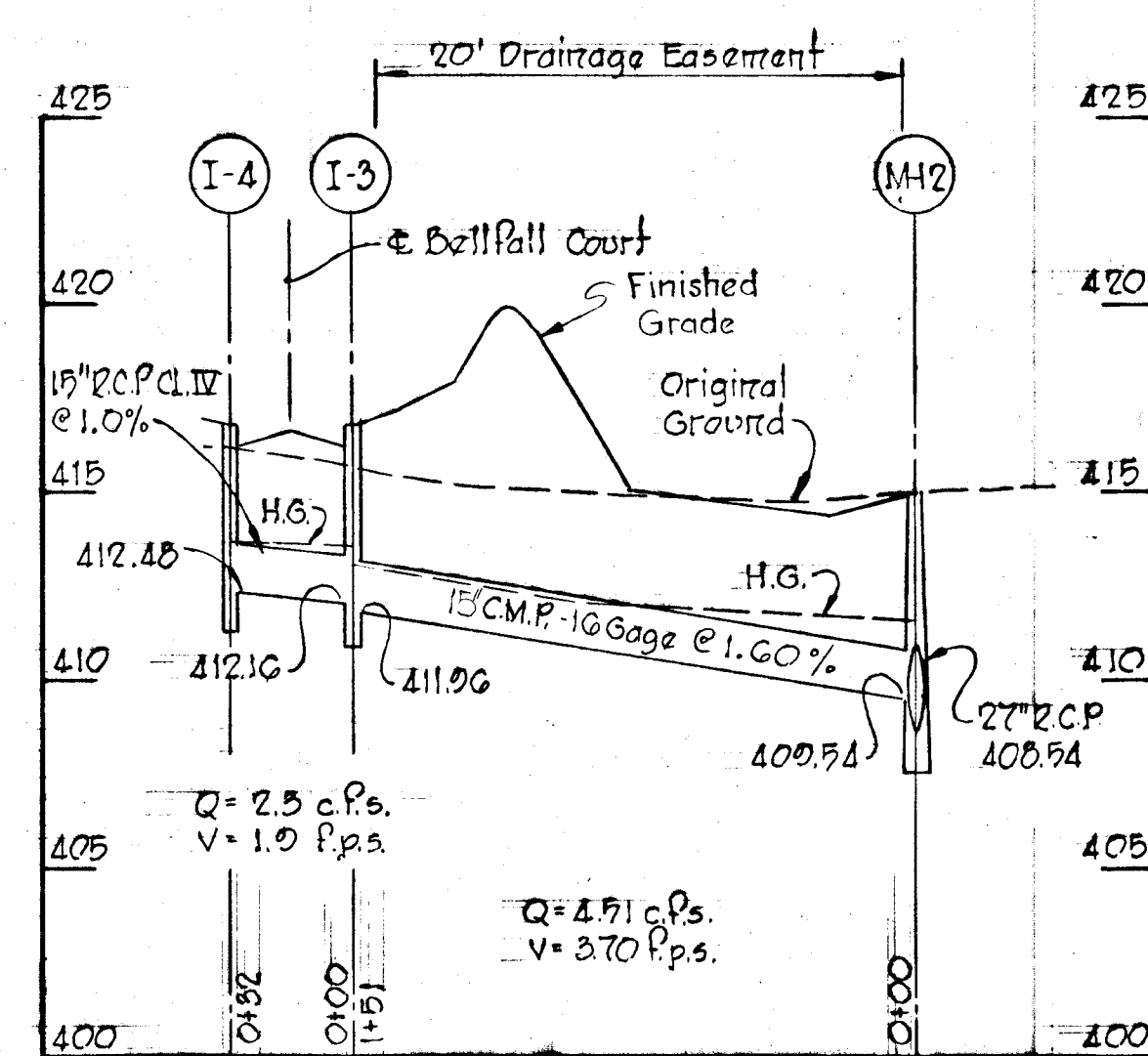
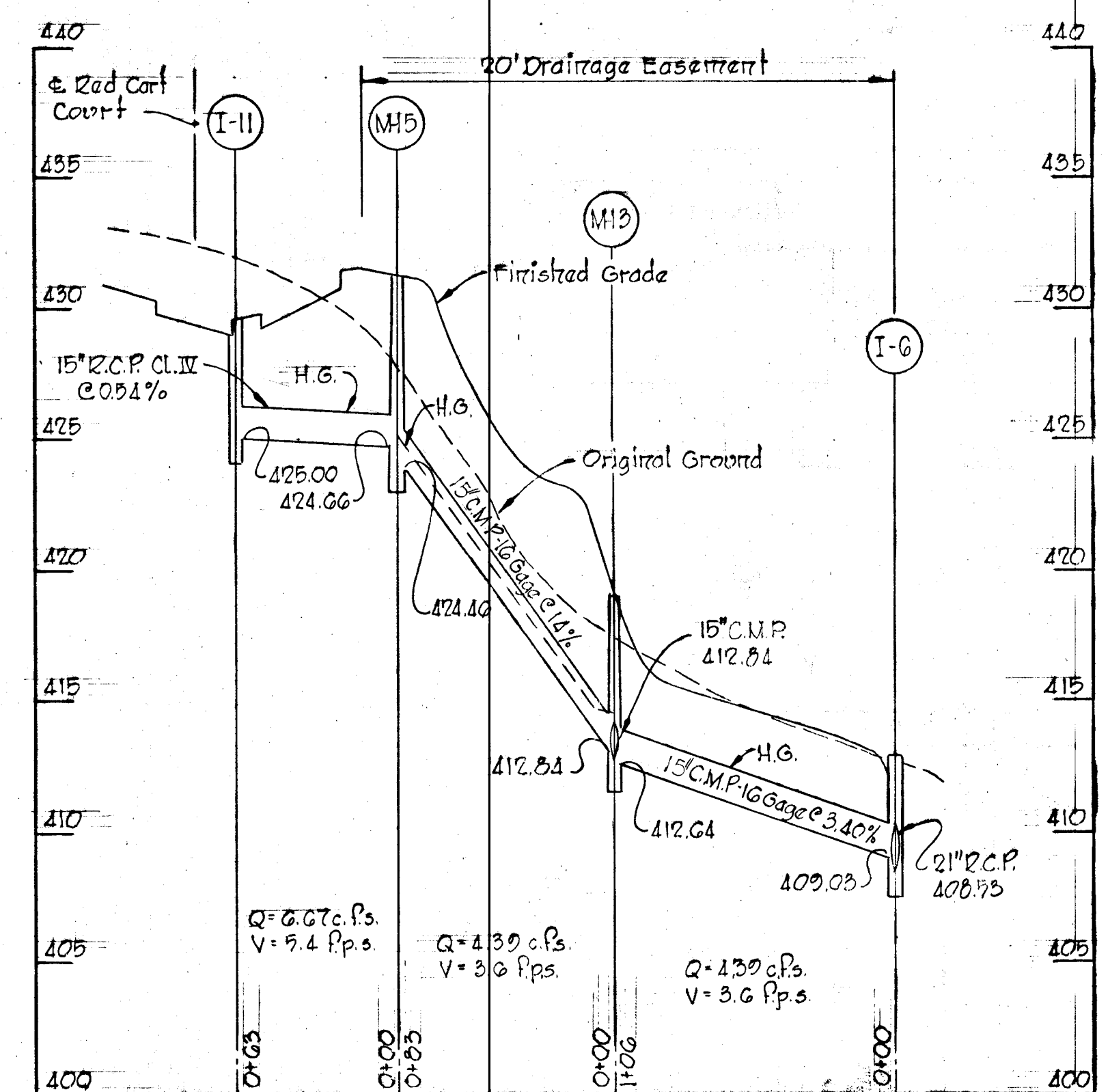
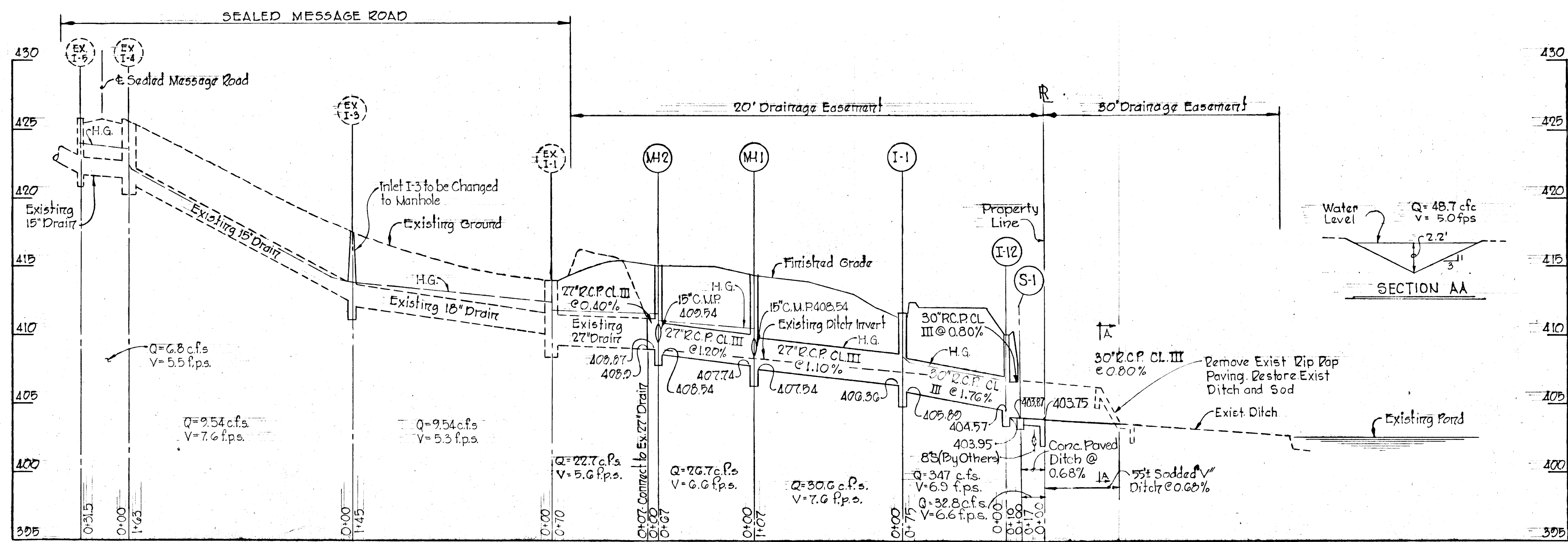
9-3-74	1	As-Built	
Rev. Date	Rev. No.	Revision Description	
<b>COLUMBIA</b>			
6 <sup>th</sup> ELECTION DISTRICT HOWARD COUNTY, MARYLAND			
OWNER AND DEVELOPER HOWARD HOMES, INC.			
PROJECT AREA			
<b>VILLAGE OF LONGREACH</b>			
SECTION 11, AREA G RESUBDIVISION OF PARCEL 14			
PROJECT TITLE			
PLAN AND PROFILE LAPWING COURT AND RED CART COURT			
SCALE: AS SHOWN		DATE:	
WHITMAN, REQUARDT & ASSOCIATES ENGINEERS BALTIMORE, MARYLAND 21202			

*Kenneth A. McCord*  
KENNETH A. McCORD  
Registered Engineer  
No. 1974

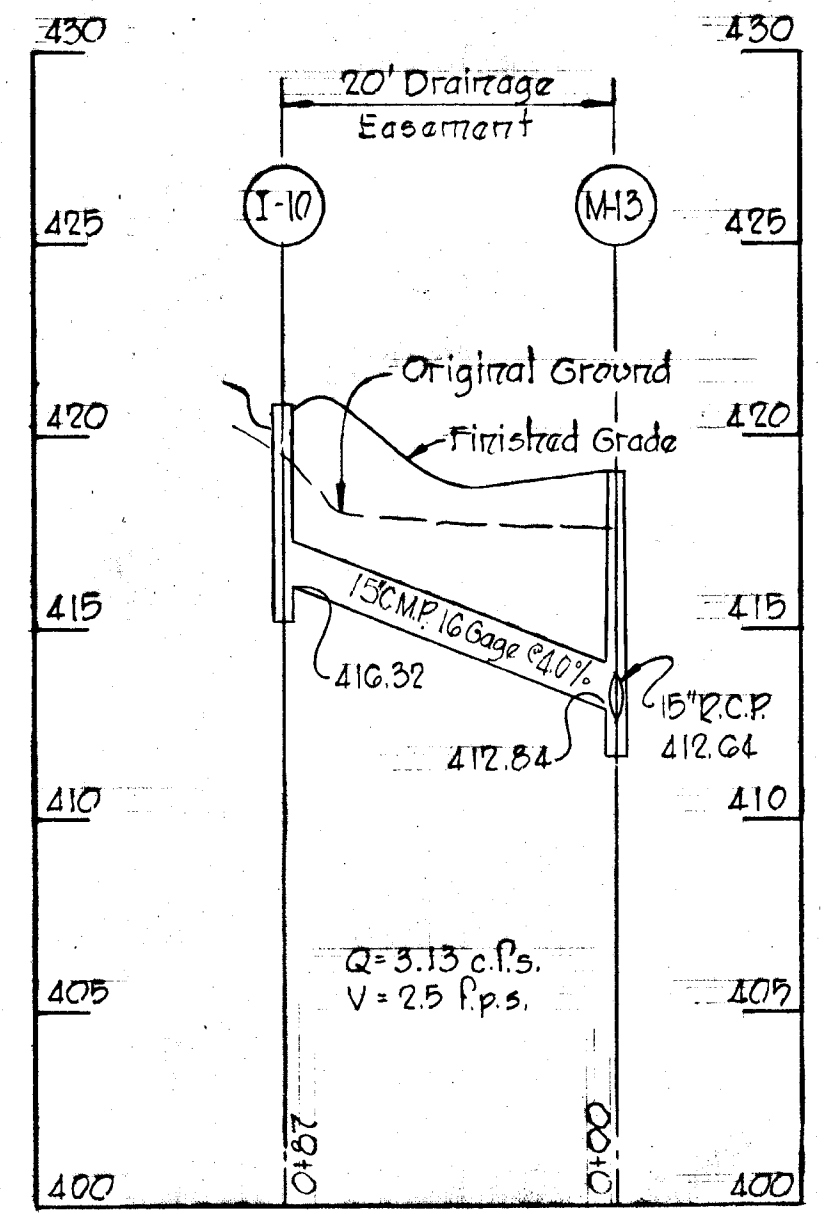


APPROVED  
DIVISION OF LAND DEVELOPMENT  
AND TRANSPORTATION PLANNING  
HOWARD COUNTY, MARYLAND  
DATE 10/13/72  
L. E. C.





PROFILES  
 Scale: Hor. 1" = 50'  
 Vert. 1" = 5'



APPROVED  
 DIVISION OF LAND DEVELOPMENT  
 AND TRANSPORTATION PLANNING  
 HOWARD COUNTY, MARYLAND  
 DATE 10/31/72

Rev. Date	Rev. No.	Revision Description

**COLUMBIA**  
 6<sup>TH</sup> ELECTION DISTRICT  
 HOWARD COUNTY, MARYLAND  
 OWNER AND DEVELOPER  
 HOWARD HOMES, INC.

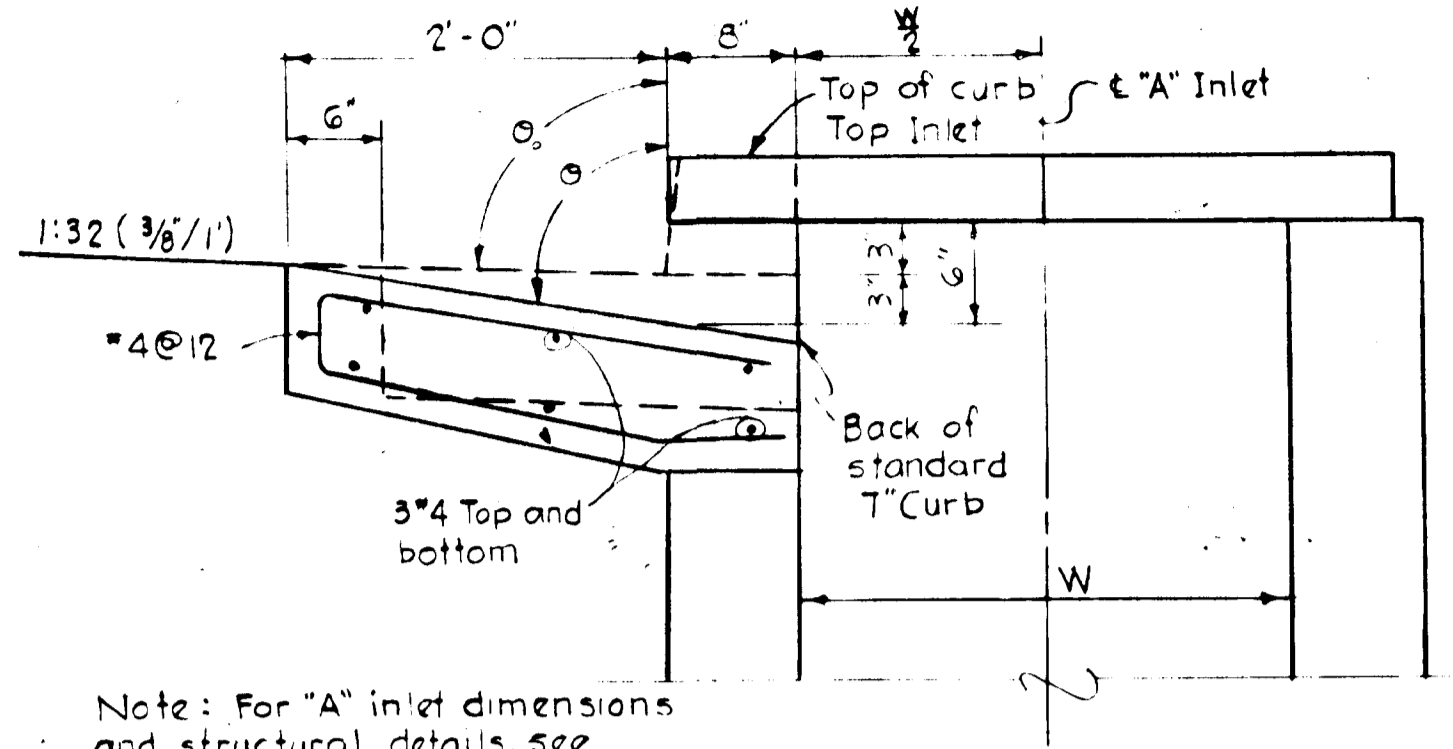
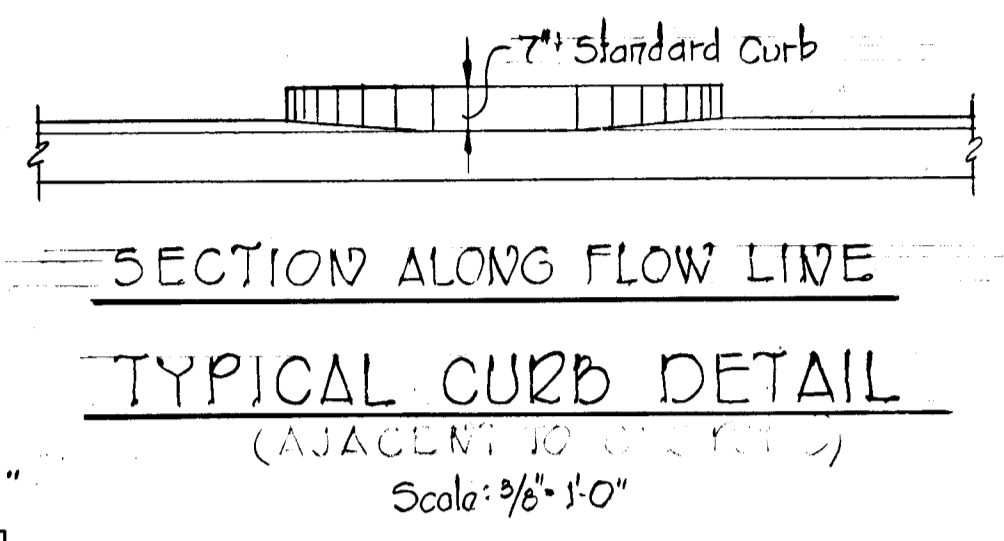
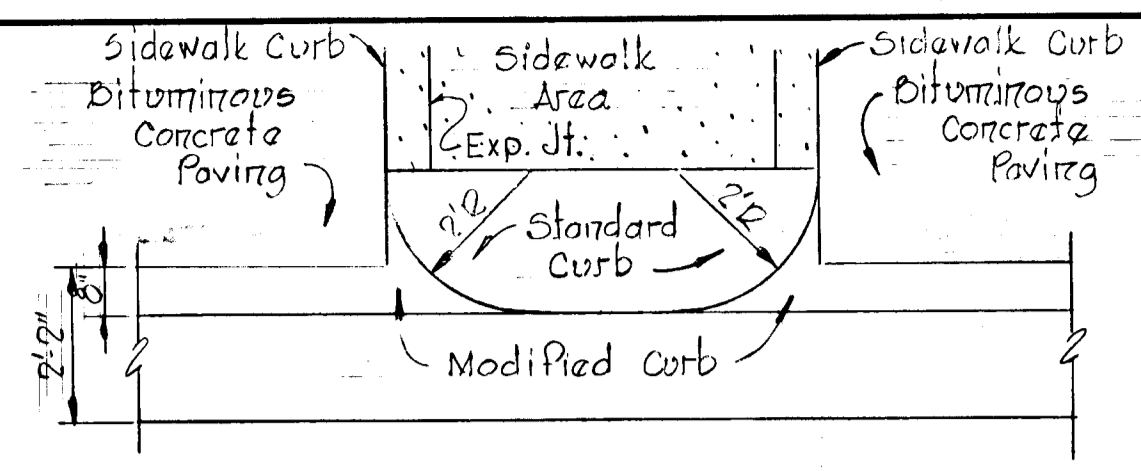
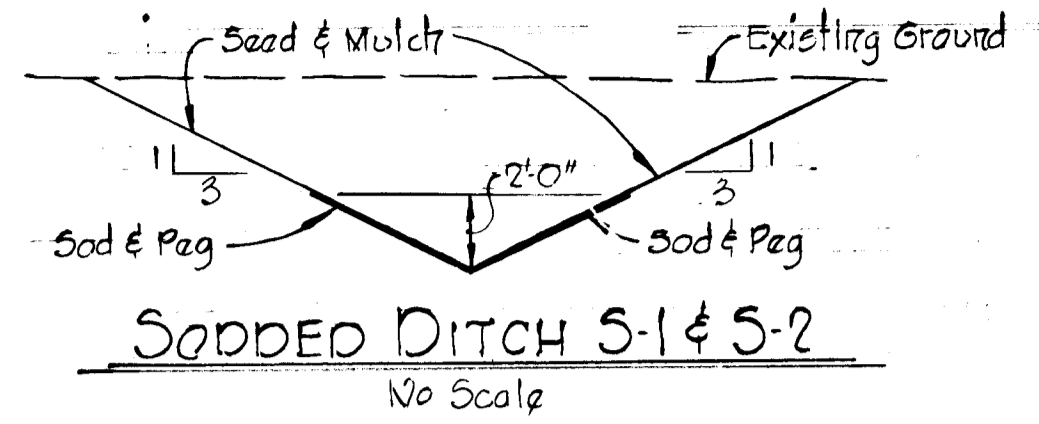
PROJECT AREA  
**VILLAGE OF LOUGREACH**  
 SECTION 1, AREA G  
 RESUBDIVISION OF PARCEL A

PROJECT TITLE  
**STORM DRAIN PROFILES,  
 OPEN CHANNEL SECTIONS**

SCALE: HORIZ: 1"=50' VERT: 1"=5' DATE:

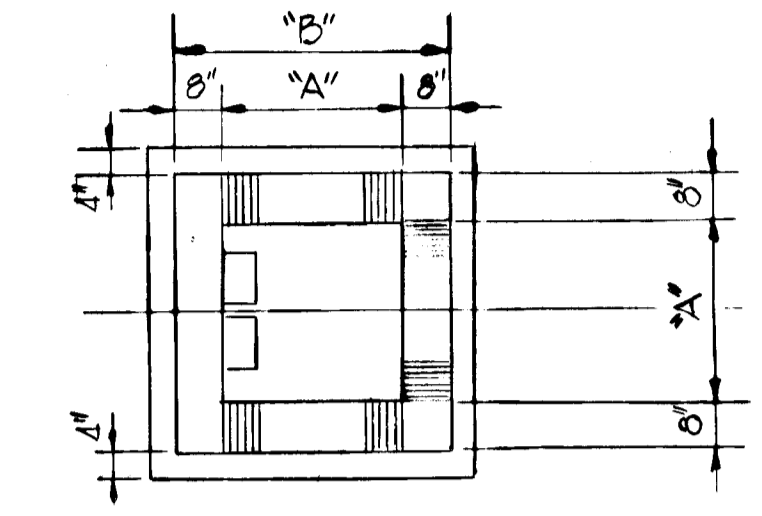
WHITMAN, REQUARDT & ASSOCIATES  
 ENGINEERS  
 BALTIMORE, MARYLAND 21202

*Kenneth A. McCord*  
 KENNETH A. MCCORD  
 Registered Engineer  
 No. 1974

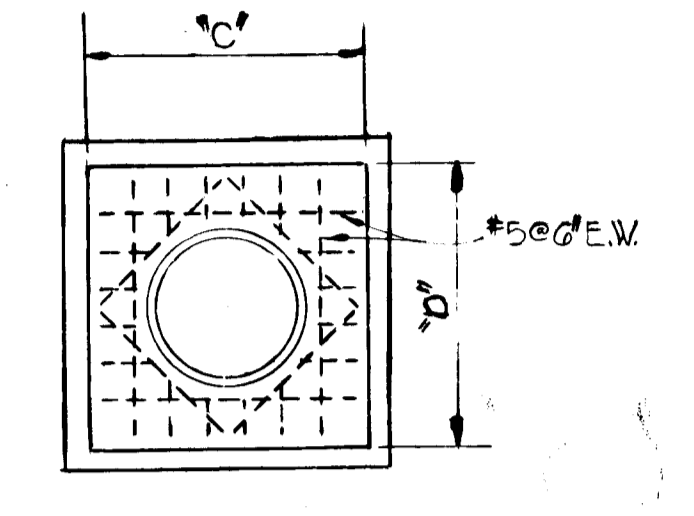


Note: For "A" inlet dimensions and structural details, see standard Howard County Drawing G4-A page 119-A

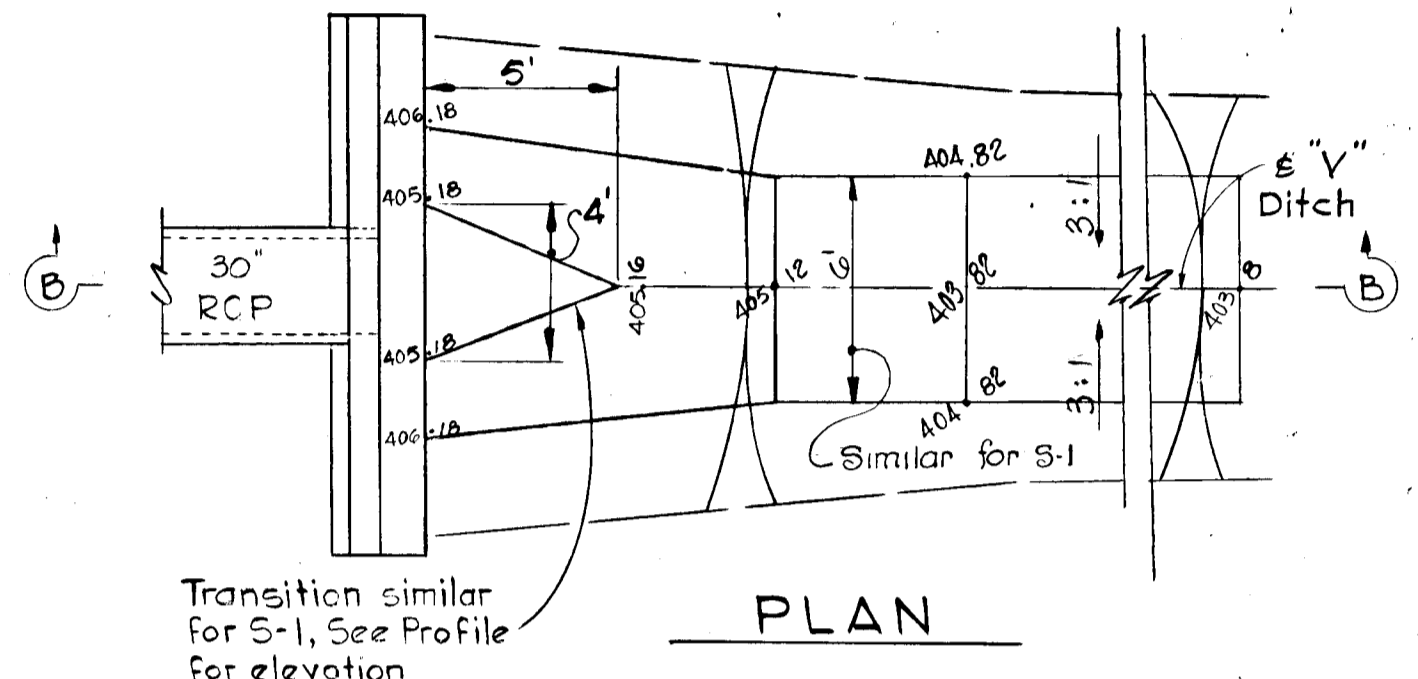
"A" INLET STANDARD CURB



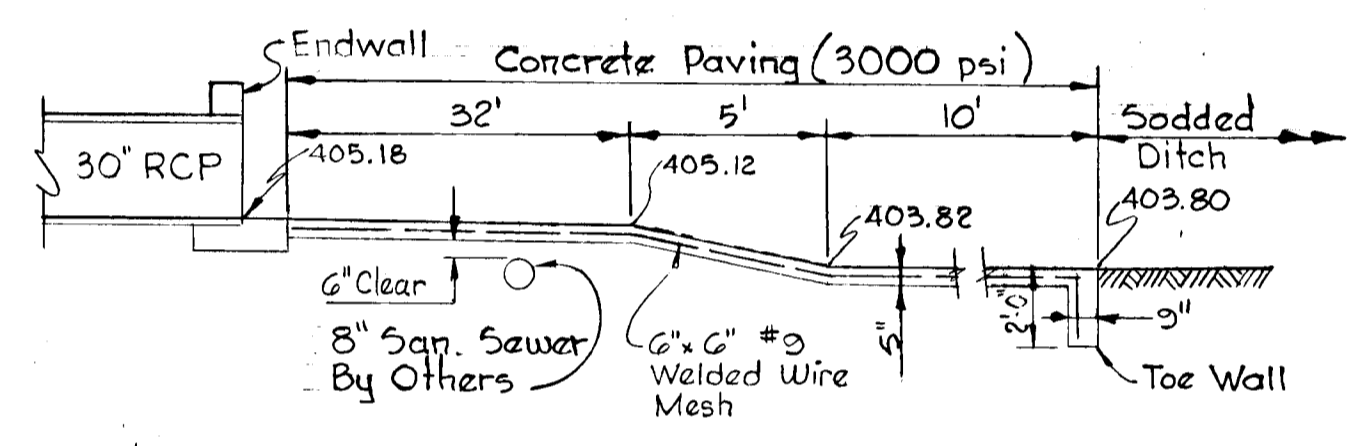
PLAN (SLAB REMOVED)



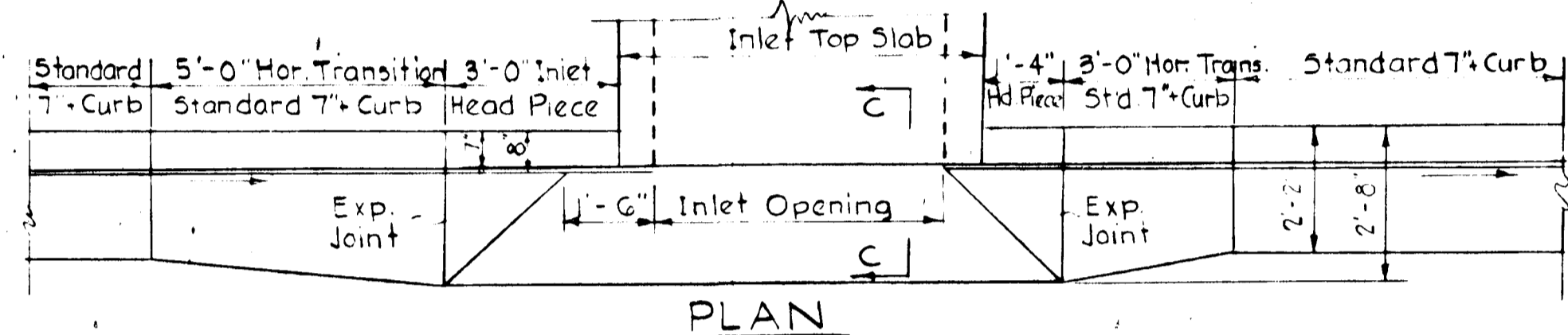
PLAN (CONCRETE SLAB)



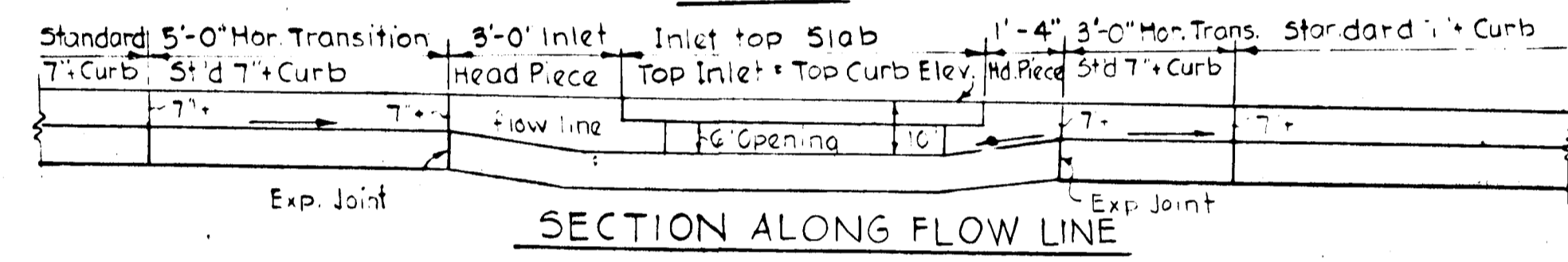
PLAN



SECTION "A-A"  
5:2 CONC. PAVING DETAIL  
No Scale

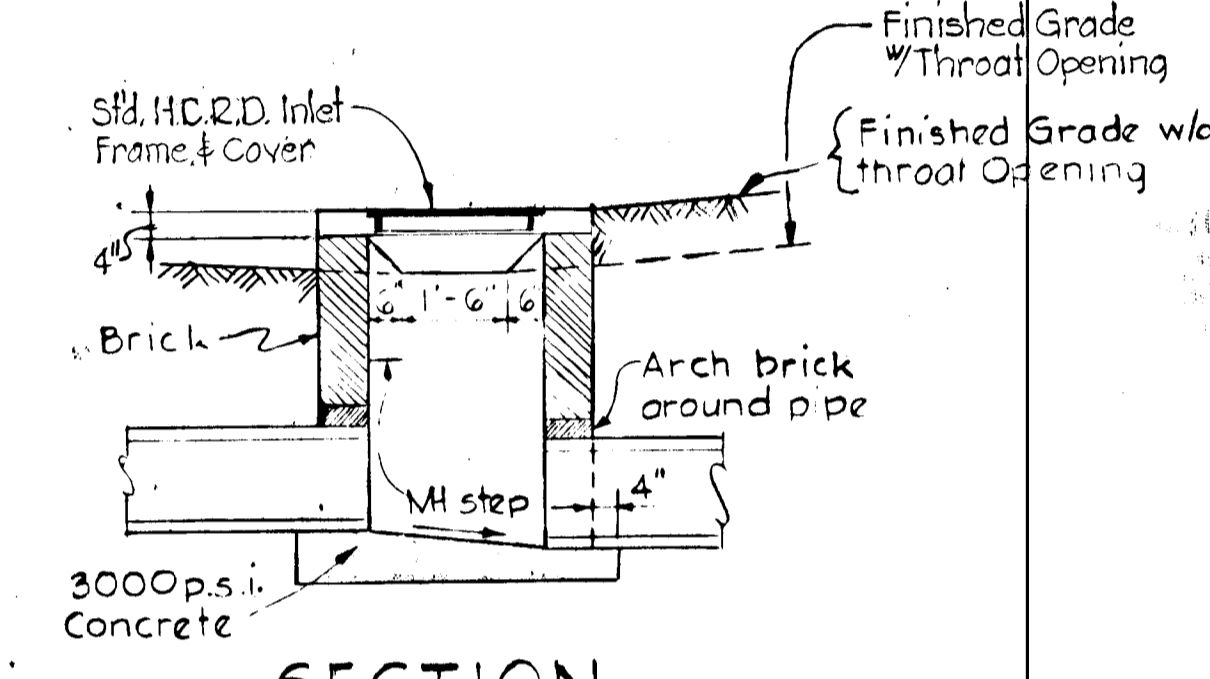


PLAN



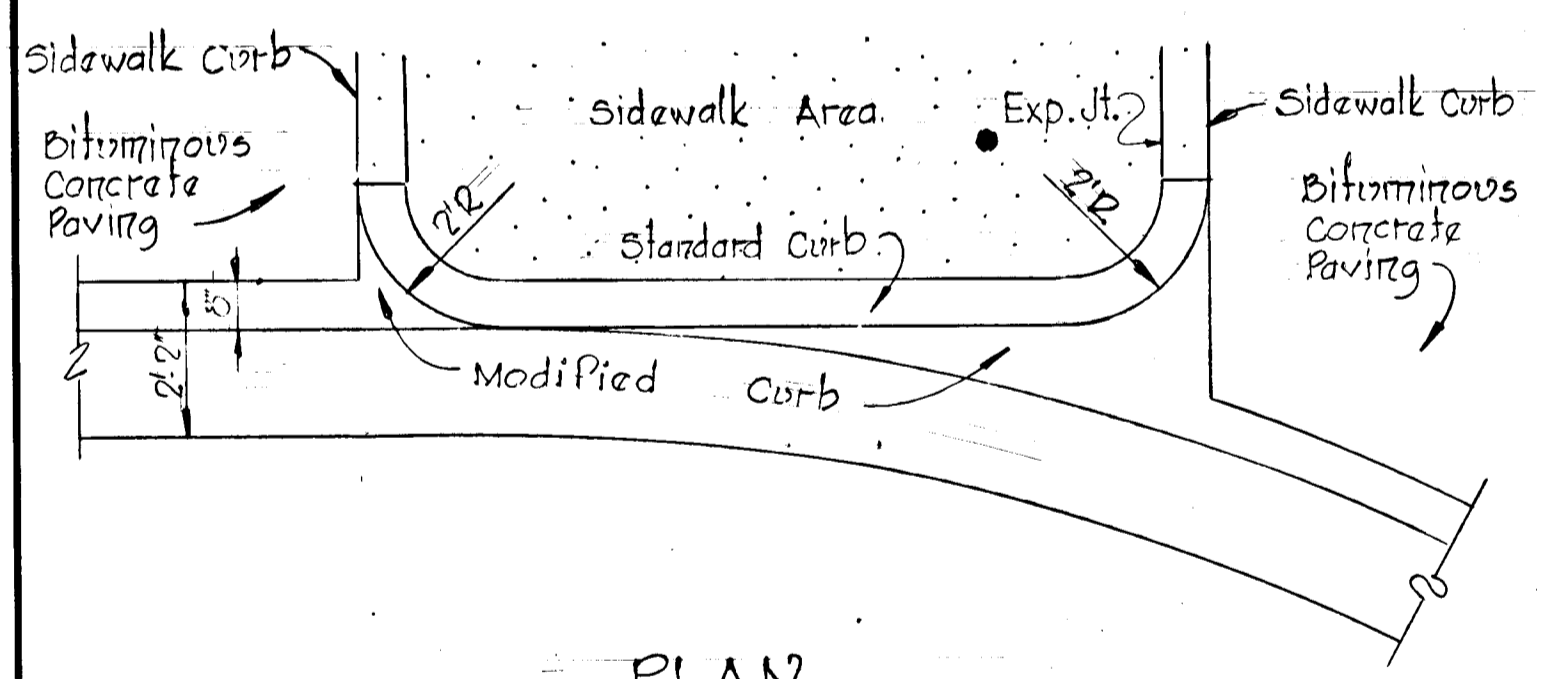
SECTION ALONG FLOW LINE  
"A" INLETS I-3, I-4, I-8 & I-9

Note: Inlet I-13 & I-11  
 I-13, For transition to depressed curb & barrier curb, see detail 4-0-5-2 and "A" inlets. Downstream transition = 5'-0" upstream transition = 2'-2"  
 I-11, For upstream transition, see detail for sumped "A" inlets.

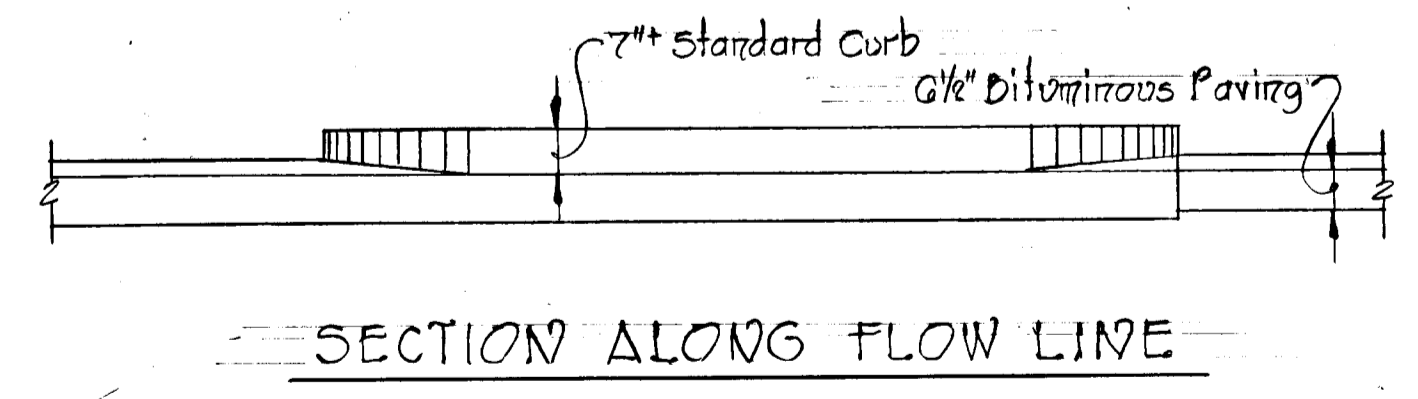


SECTION

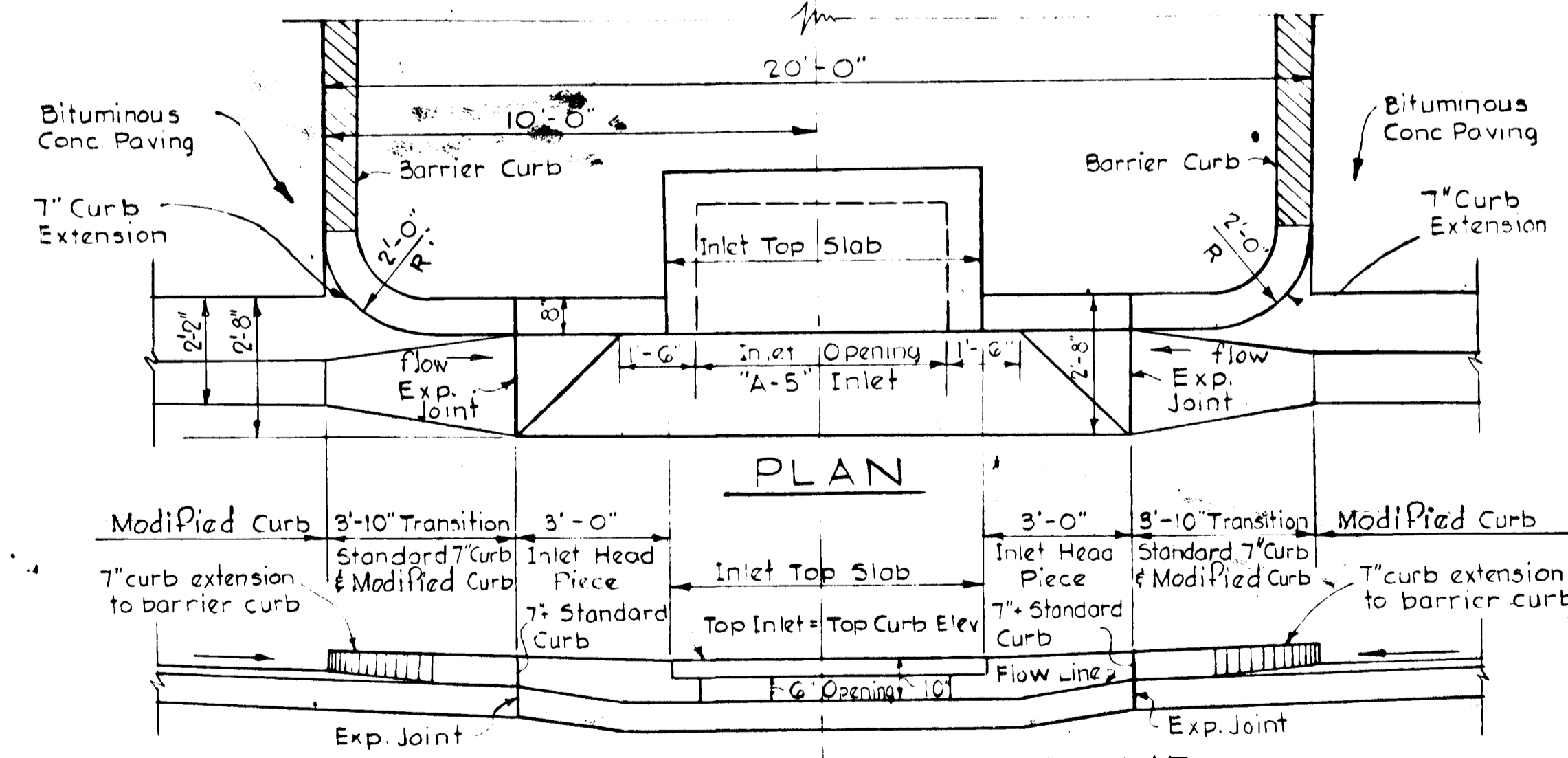
INLET	A	B	C	D
I-1	3'-6"	4'-10"	4'-10"	4'-10"
I-5	3'-6"	4'-10"	4'-10"	4'-10"
I-6	2'-6"	3'-10"	3'-10"	3'-10"
I-10	2'-6"	3'-10"	3'-10"	3'-10"
I-12	3'-6"	4'-10"	4'-10"	4'-10"



PLAN



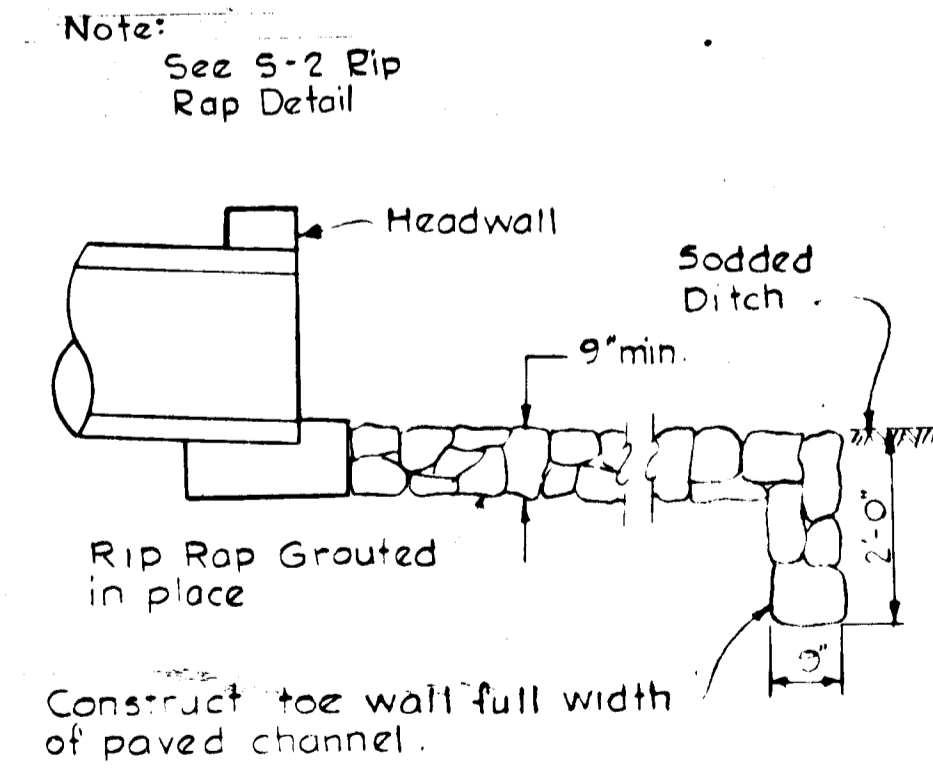
SECTION ALONG FLOW LINE  
CURB DETAIL  
(FRONT OF LOT A-78)  
Scale: 3/8" = 1'-0"



PLAN

SECTION ALONG FLOW LINE  
SUMPED "A" INLETS I-2, I-7 & I-11  
Scale 3/8" = 1'-0"

CLASS "C" INLET  
Scale: 3/8" = 1'-0"



RIP RAP PAVING  
Scale: 1/2" = 1'-0"

Rev. Date	Rev. No.	Revision Description
<b>COLUMBIA</b> 6 <sup>th</sup> ELECTION DISTRICT HOWARD COUNTY, MARYLAND OWNER AND DEVELOPER HOWARD HOUSE, INC.		
PROJECT AREA <b>VILLAGE OF LONGREACH</b> SECTION 1, AREA G RESUBDIVISION OF PARCEL "A"		
PROJECT TITLE <b>STORM DRAIN AND CURB AND GUTTER DETAILS</b>		
SCALE: As Shown DATE		
WHITMAN, REQUARDT & ASSOCIATES ENGINEERS BALTIMORE, MARYLAND 21202		
<i>Kenneth A. McCord</i> KENNETH A. McCORD Registered Engineer No. 1974		