

I CERTIFY THAT ALL DEVELOPMENT AND/OR CONSTRUCTION WILL BE DONE ACCORDING TO THIS PLAN OF DEVELOPMENT AND PLAN OF SILT AND SEDIMENT CONTROL.

Richard Mueller
PRESIDENT DATE 11/18/71

I CERTIFY THAT THE PLAN OF DEVELOPMENT AND THE PLAN FOR CONTROL OF SILT AND EROSION MEETS THE REQUIREMENTS, STANDARDS AND SPECIFICATIONS OF THE HOWARD SOIL CONSERVATION DISTRICT.

William G. Rasch II
WILLIAM G. RASCH II DATE 7/7/72

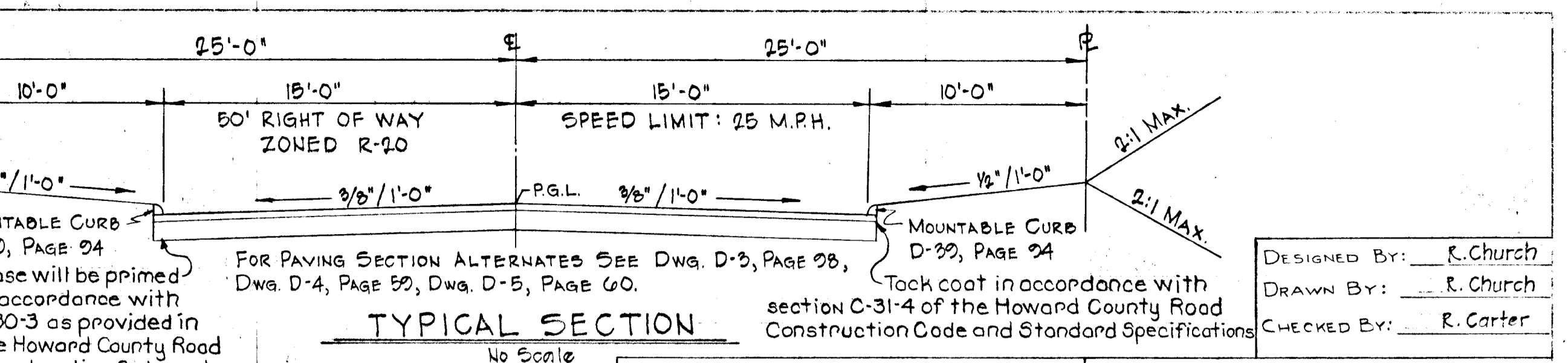
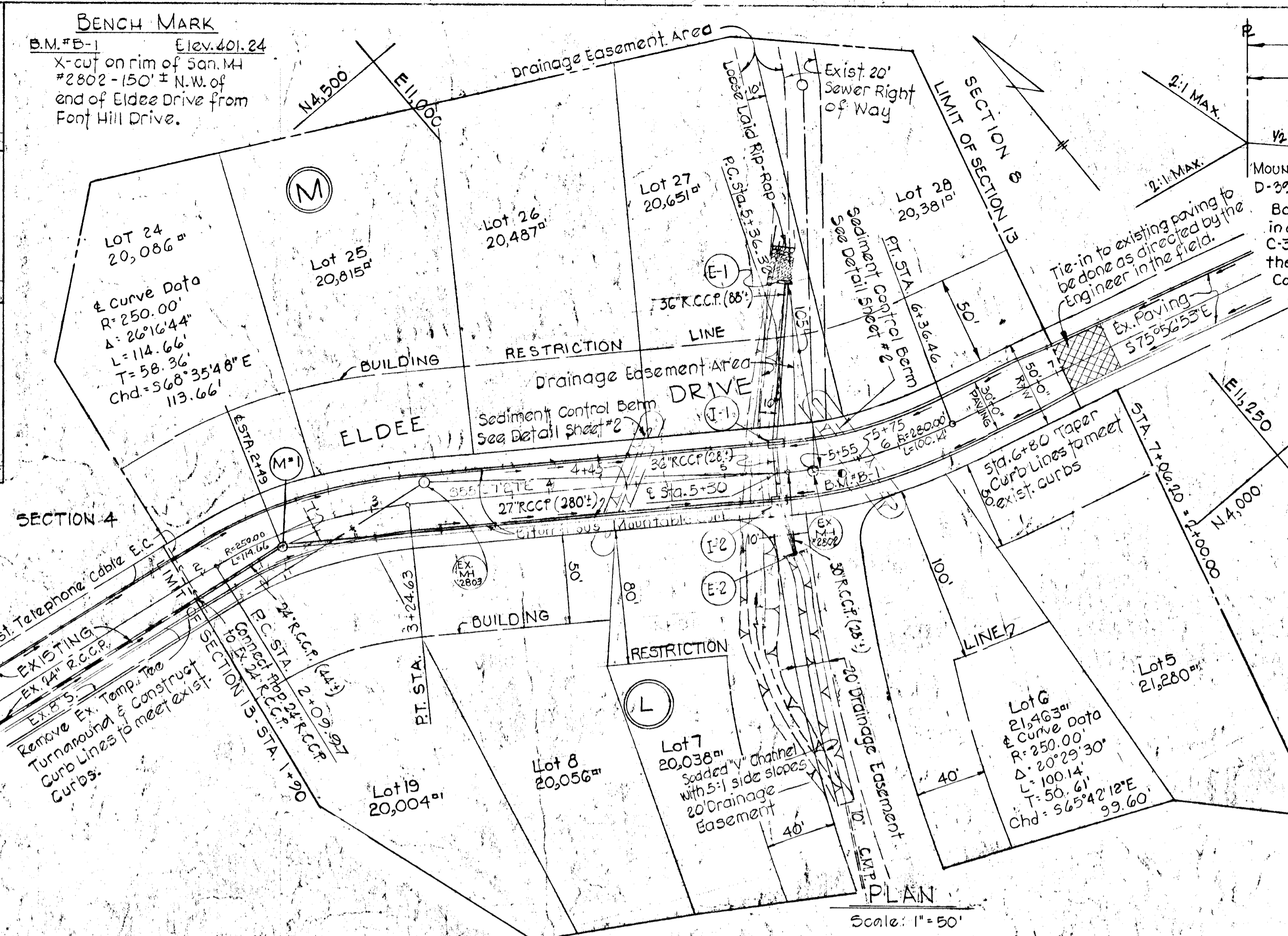
THIS DEVELOPMENT PLAN IS APPROVED FOR SOIL EROSION AND SEDIMENT CONTROL BY THE HOWARD SOIL CONSERVATION DISTRICT.

REVIEWED: *James M. Helm* DATE 7-20-72
DISTRICT CONSERVATIONIST

APPROVED: *Robert W. Ziehm* DATE 9-20-72
HOWARD SOIL CONSERVATION DISTRICT

GENERAL NOTES

- All Construction shown hereon shall be in accordance with the Howard County Road Construction Code and Standard Specifications dated November 27, 1967 and revised 1967.
- References to page and drawing numbers shown hereon are referred to the above mentioned Road Construction Code and Standard Specifications.
- Design Speed - 25 M.P.H.
- See Sheet #2 for Sediment Control Notes and Berm and Details of "V" Channel upstream & downstream.
- The vertical control shown on this drawing is based on assumed datum.



FOR PAVING SECTION ALTERNATES SEE DWG. D-3, PAGE 28, D-4, PAGE 50, D-5, PAGE 60.

Base will be primed in accordance with C-30-3 as provided in the Howard County Road Construction Code and Standard Specifications.

Tack coat in accordance with section C-31-4 of the Howard County Road Construction Code and Standard Specifications.

OWNER AND DEVELOPER: THE DEVELOPMENT AND INVESTMENT CORPORATION OF MARYLAND, 9998 OLD ANNAPOLIS ROAD, ELLICOTT CITY, MARYLAND - 21043

PURDUM & JESCHKE ENGINEERS & LAND SURVEYORS, 3697 PARK AVENUE, ELLICOTT CITY, MARYLAND

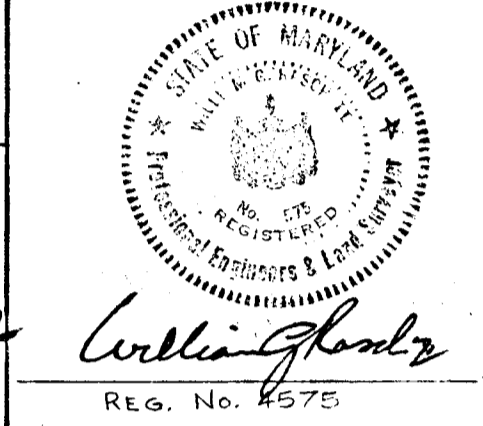
DESIGNED BY: R. Church
DRAWN BY: R. Church
CHECKED BY: R. Carter

DEPARTMENT OF PUBLIC WORKS: *S. M. Meadows* DATE 9/22/72
CHIEF, BUREAU OF HIGHWAYS

OFFICE OF PLANNING AND ZONING: *J. H. Clawson* DATE 9/19/72
CHIEF, DIVISION OF LAND DEVELOPMENT AND TRANSPORTATION PLANNING

PLAN AND PROFILE: ELDEE DRIVE

APPROVED
DIVISION OF LAND DEVELOPMENT AND TRANSPORTATION PLANNING
HOWARD COUNTY, MARYLAND
DATE SEP 11 1972
[Signature]

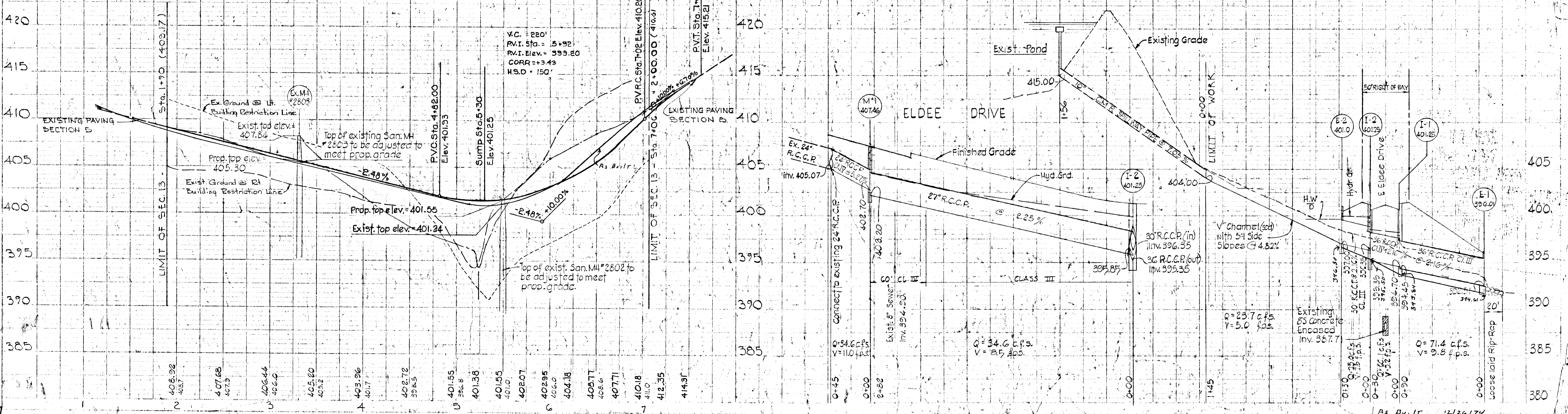


STRUCTURE SCHEDULE

NO.	TYPE	INV. IN	INV. OUT	TOPELEV.	REMARKS
E-1	C		392.51	396.01	Dwg. D-52 pg. 107
I-1	A-10	394.70	394.45	401.38	Dwg. 44A pg. 119A
I-2	A-10	396.35	395.35	401.38	Dwg. 44A pg. 119A
E-2	C	397.00		401.76	Dwg. D-52 pg. 107
M-1	Type B	402.70	402.20	407.46	Shallow MH

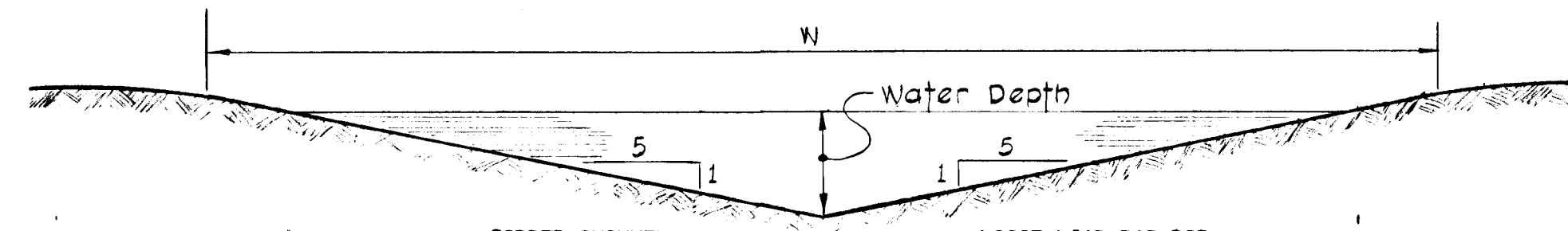
PROFILE SCALE
HOR. 1" = 50'
VERT. 1" = 5.0'

ELDEE DRIVE



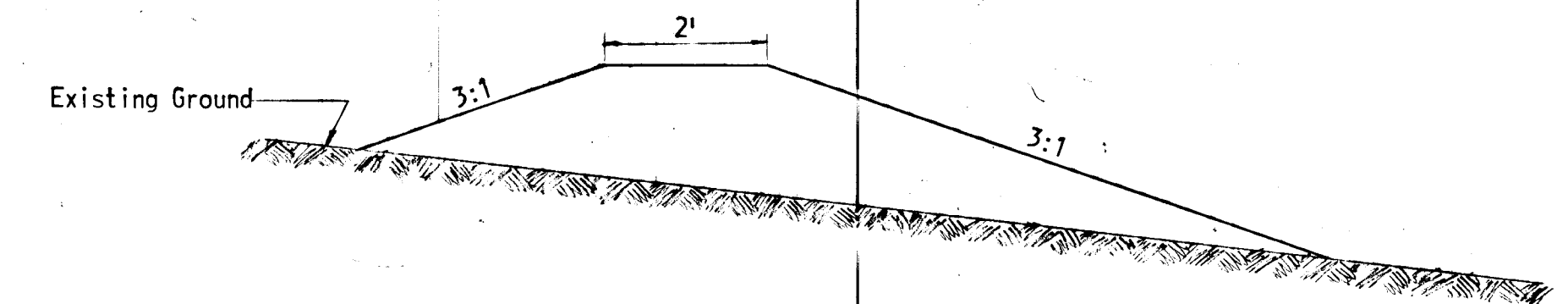
SEDIMENT CONTROL NOTES

- 1) The developer shall notify the Howard County Soil Conservation District Conservationist at least 24 hours prior to the beginning of any construction shown hereon. (465-3180)
- 2) All disturbed areas shall be stabilized by seeding and/or sodding in accordance with "Standards and Specifications for Soil Erosion and Sediment Control in Urbanizing Areas" for critical area stabilization immediately after earthwork operation.
- 3) All graded areas not to be sodded shall be stabilized by seeding and mulching in accordance with the following:
 1. Site preparation
 - A. Harrow or disc in areas proposed to be seeded the following materials at the specified rate to a depth of 3".
 - 1) Pulverized burnt limestone 1 1/2 tons/acre.
 - 2) Commercial fertilizer 10-10-10 1/4 tons/acre.
 - 3) Super phosphate 600 lbs./acre.
 2. Seeding
 - A. Sow the following seed mixtures the rate of 200 lbs./acre with a mechanical spreader.
 - 1) 20% Annual Rye Grass
 - 2) 80% Kentucky 31 Fescue (K-31)
 - B. The seeded area shall then be raked with a York Rake (minimum of 2 passes), covered and compacted with Cultipacker or other approved method.
 3. Mulching
 - A. Seeded areas shall be uniformly mulched immediately after seeding with unweathered small grain straw at the rate of 1 1/2 to 2 tons/acre.
 - B. Tie mulch down with liquid asphalt 0.1 gal./s.y. or emulsified asphalt 0.04 gal./s.y. or mulch netting



SOODED CHANNEL (Upstream)	LOOSE LAID RIP-RAP (Downstream)
W = 10.00'	W = 14.00'
A = 5.00'	A = 9.80'
R = 0.38'	R = 0.685'
S = 0.067	S = 0.020
N = 0.025	N = 0.020
R ^{2/3} = 0.525	R ^{2/3} = 0.777
S ^{1/2} = 0.259	S ^{1/2} = 0.141
V = 5.00	V = 7.6
Water Depth (Design) = 1.00	Water Depth (Design) = 1.40
Water Depth (Actual) = 0.78	Water Depth (Actual) = 1.25
Design Capacity = 5.00 x 5.00 = 25 c.f.s	Design Capacity = 7.6 x 9.8 = 74.5 c.f.s.

DETAIL OF "V" CHANNEL
SCALE: 1" = 2'



SEDIMENT CONTROL BERM
SCALE: 1" = 2'

APPROVED
DIVISION OF LAND DEVELOPMENT
AND TRANSPORTATION PLANNING
HOWARD COUNTY, MARYLAND
DATE SEP 1 1972
Javel

OWNER AND DEVELOPER
THE DEVELOPMENT AND INVESTMENT
CORPORATION OF MARYLAND
9998 OLD ANNAPOLIS ROAD
ELLCOTT CITY, MARYLAND 21043

APPROVED: DEPARTMENT OF PUBLIC WORKS
B. M. McKeand 9/22/72
Chief: Bureau of Highways Date
APPROVED: OFFICE OF PLANNING & ZONING
J. H. Clowant 9/19/72
Chief: Division of Land Development and Transportation Planning Date

DETAILS - SEDIMENT CONTROL - SHEET #2 OF 2
SECTION THIRTEEN
GWYNN ACRES
2nd. ELECTION DISTRICT, HOWARD CO., MD.
SCALE: AS SHOWN MARCH, 1972



William J. Reska
9/19/72

PURDUM & JESCHKE
CONSULTING ENGINEERS
AND LAND SURVEYORS
1023 N. CALVERT STREET
BALTIMORE, MARYLAND