

LOOP CURVE DATA

WOVEN MOONBEAM
 PC 1+06.14 to PT 1+47.70
 $\Delta = 90^{\circ}00'00''$ Tan: 15.00'
 R: 15.00' Chd: 21.21'
 L: 23.96' Chd Brg: $S 50^{\circ}04'14'' E$

PC 2+00.70 to PT 2+24.26
 $\Delta = 90^{\circ}00'00''$ Tan: 15.00'
 R: 15.00' Chd: 21.21'
 L: 23.96' Chd Brg: $N 80^{\circ}59'42'' E$

PC 2+50.26 to PT 2+73.82
 $\Delta = 90^{\circ}00'00''$ Tan: 15.00'
 R: 15.00' Chd: 21.21'
 L: 23.56' Chd Brg: $N 02^{\circ}04'14'' W$

CURVE DATA

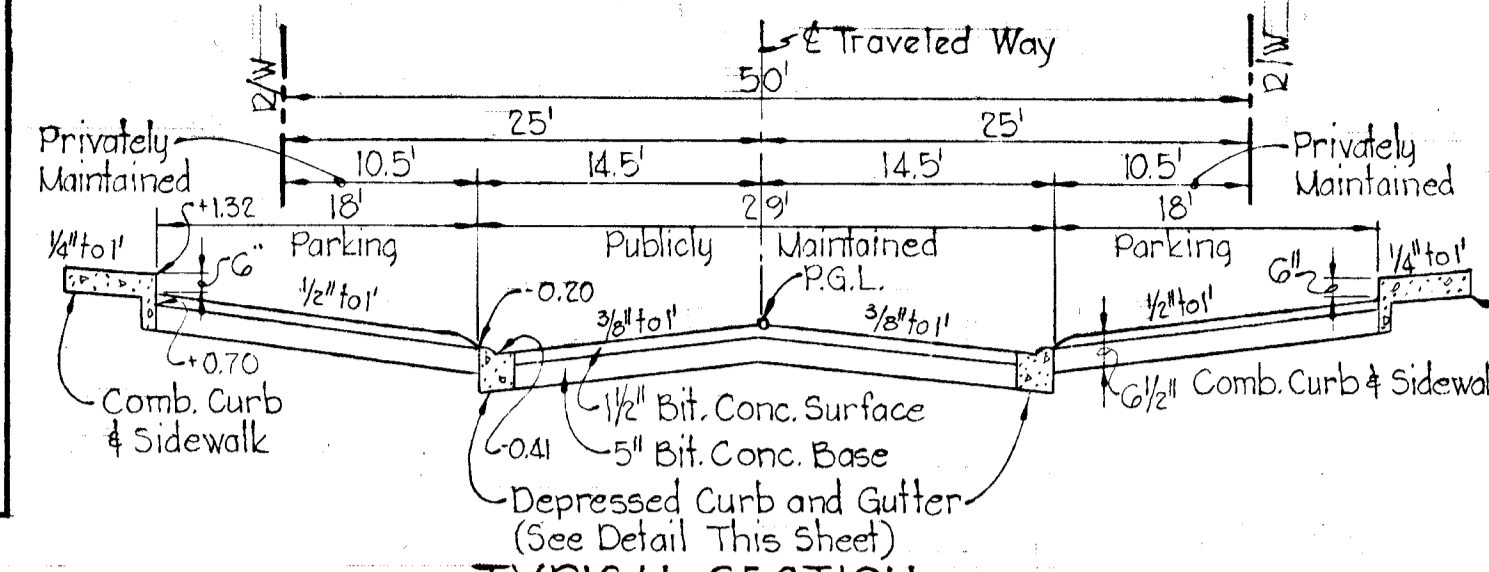
SWEET FERN
 PC 0+98.01 to PT 1+76.58
 $\Delta = 46^{\circ}00'51''$ Tan: 42.02'
 R: 100.00' Chd: 78.41'
 L: 80.97' Chd Brg: $S 12^{\circ}15'50'' W$

VICINITY MAP

Scale: 1" = 2,000'

GENERAL NOTES

- Bench Mark W-785 iron pipe 195'± right of E station 17+00 Cradlerock Way. Elev 351.79
- All work shall be done in accordance with the Howard County Road Construction Code and Standard Specifications.
- All utility companies must be notified 24 hours in advance of any construction.
- Secondary residential streets are designed for 25 M.P.H. traffic speed in accordance with AASHO Standards.
- All inlets shall be Howard County Standard unless otherwise shown. All inlets shall be depressed.
- Storm drain trenches within road rights-of-way shall be backfilled and compacted in accordance with Howard County Road Code.
- Speed limit for loop portions of streets shall be 15 M.P.H.

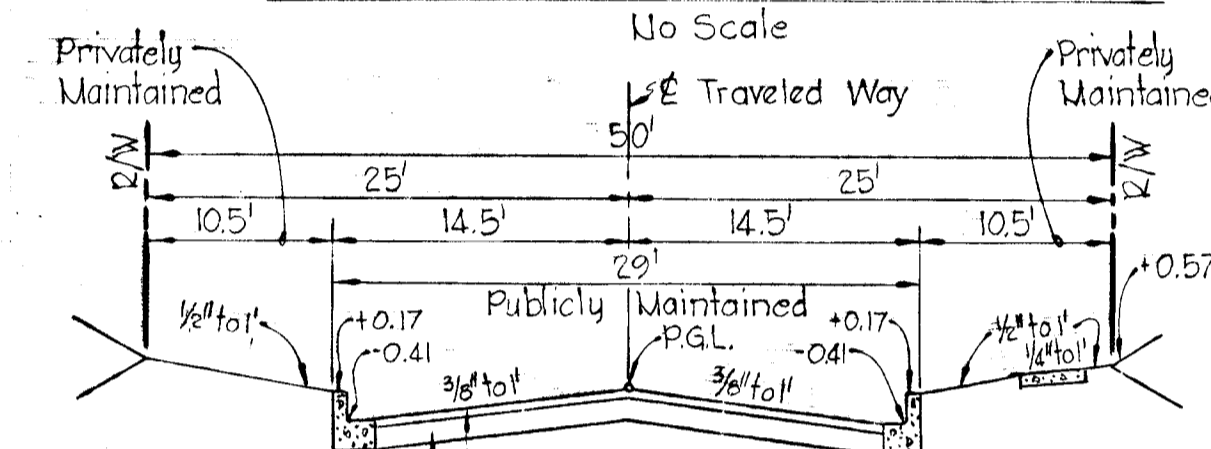


TYPICAL SECTION

PARKING ADJACENT TO 29' PAVING

No Scale

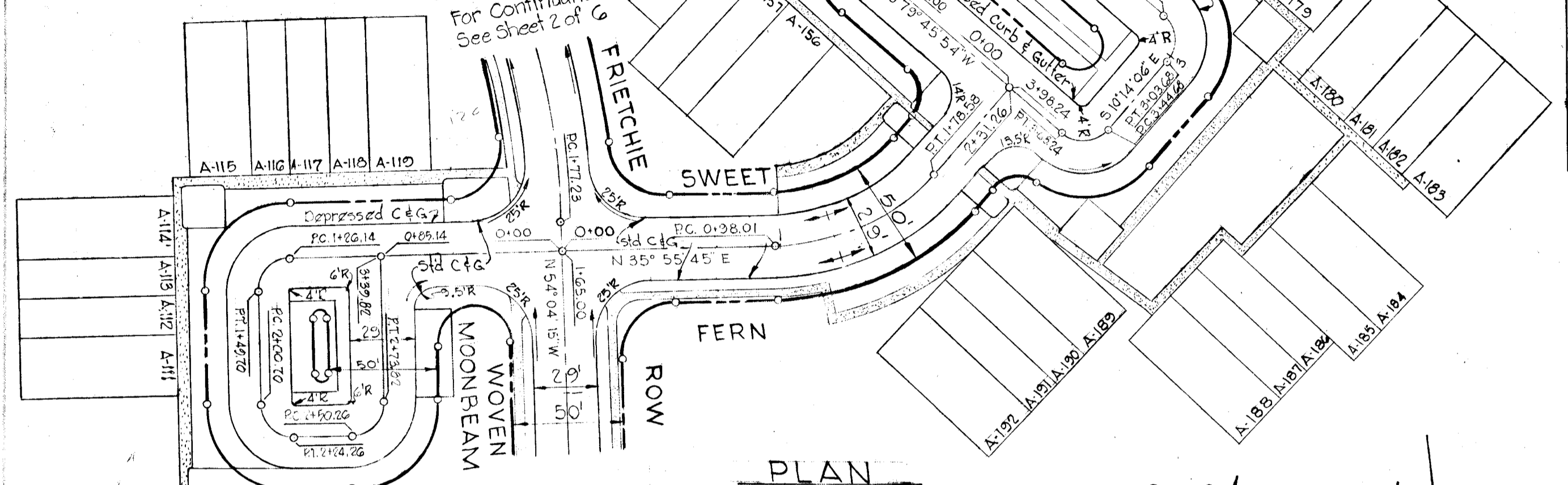
DEPRESSED CURB AND GUTTER



TYPICAL SECTION

50' R/W - 29' PAVING

No Scale



PLAN

Scale: 1" = 50'

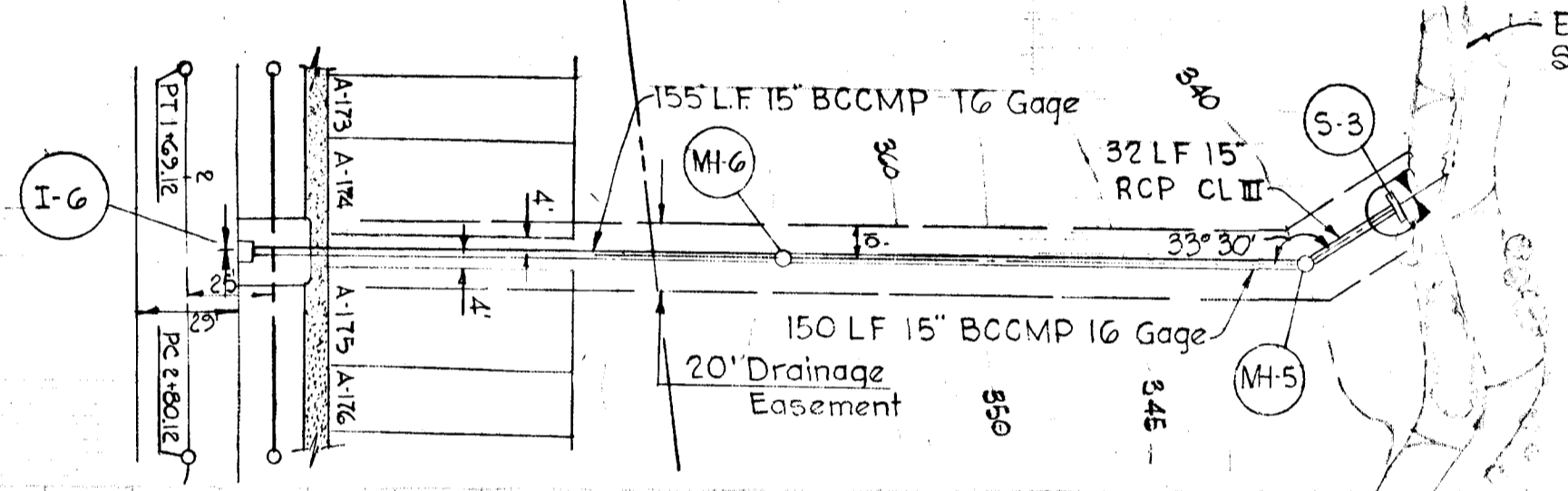
SWEET FERN LOOP

PC 0+81.00 to PT 1+04.56
 $\Delta = 90^{\circ}00'00''$ Tan: 15.00'
 R: 15.00' Chd: 21.21'
 L: 23.56' Chd Brg: $N 55^{\circ}14'06'' W$

PC 1+45.56 to PT 1+69.12
 $\Delta = 90^{\circ}00'00''$ Tan: 15.00'
 R: 15.00' Chd: 21.21'
 L: 23.56' Chd Brg: $N 34^{\circ}45'54'' E$

PC 2+80.12 to PT 3+03.68
 $\Delta = 90^{\circ}00'00''$ Tan: 15.00'
 R: 15.00' Chd: 21.21'
 L: 23.56' Chd Brg: $S 55^{\circ}14'06'' E$

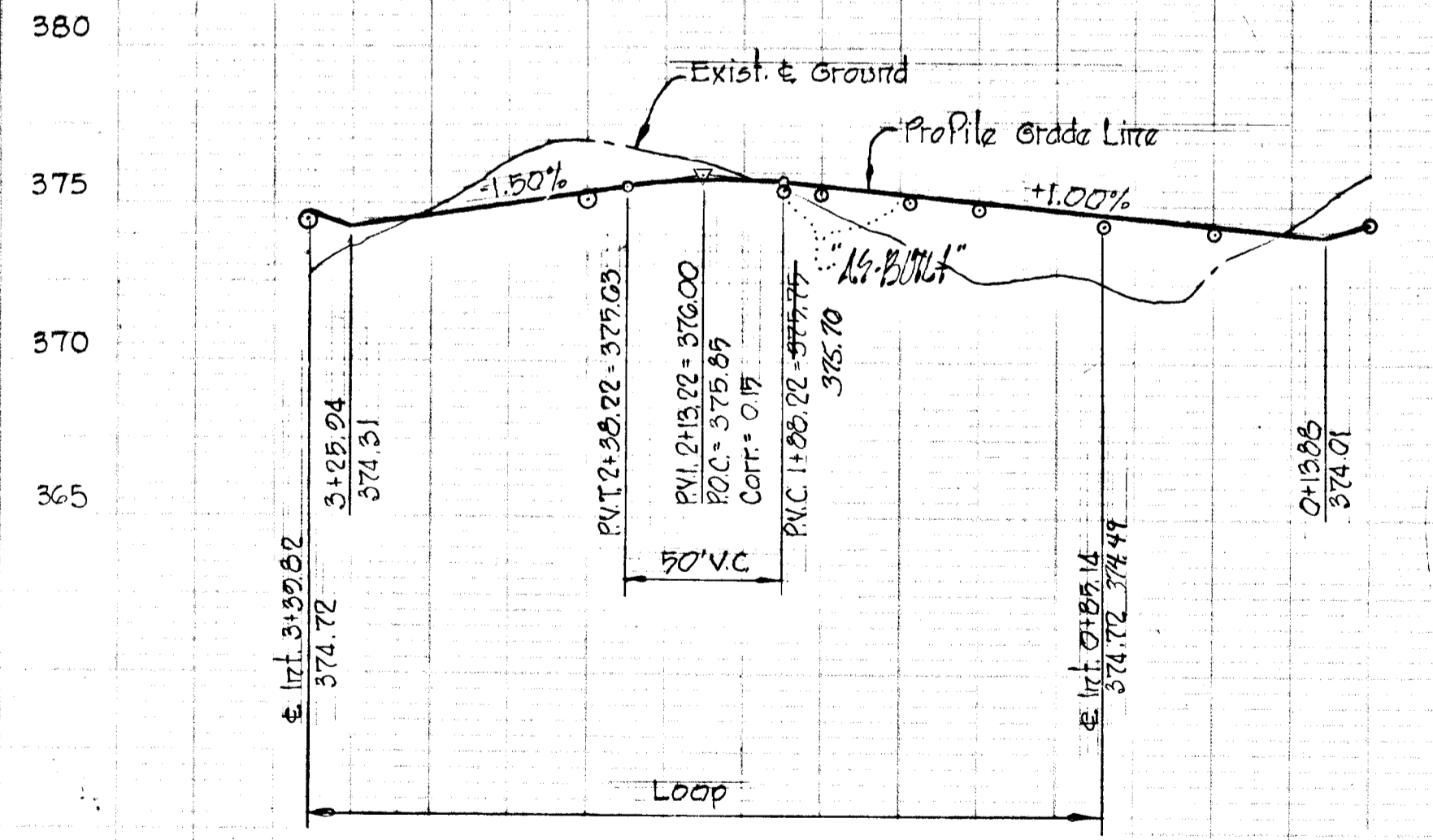
PC 3+44.68 to PT 3+68.24
 $\Delta = 90^{\circ}00'00''$ Tan: 15.00'
 R: 15.00' Chd: 21.21'
 L: 23.56' Chd Brg: $S 34^{\circ}45'54'' W$



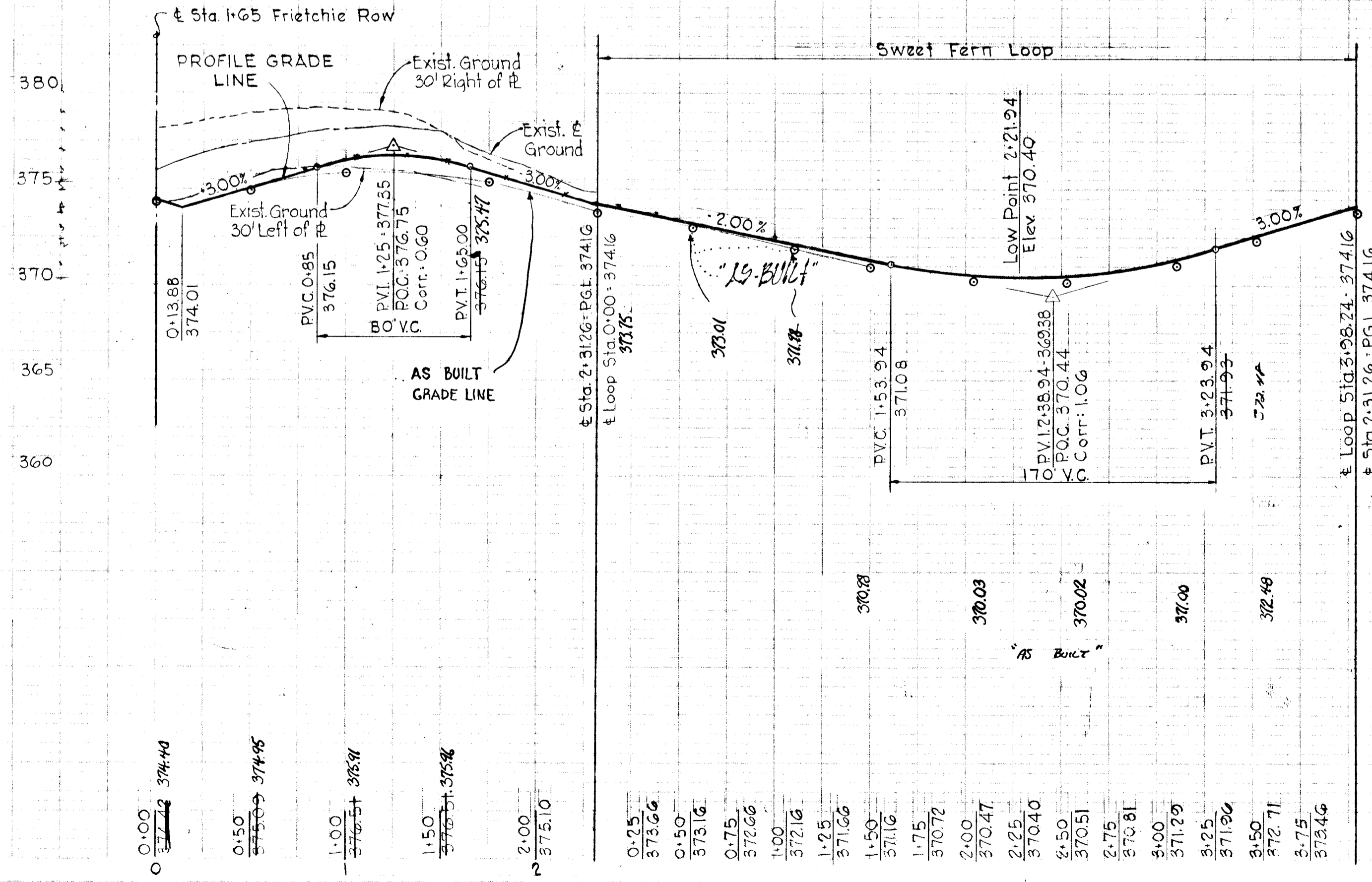
PROFILE

Scale: Hor: 1" = 50'
 Ver: 1" = 5'

WOVEN MOONBEAM



SWEET FERN



DEPARTMENT OF PUBLIC WORKS
 B. N. McLeod 10/19/72
 CHIEF, BUREAU OF HIGHWAYS DATE

OFFICE OF PLANNING AND ZONING
 CHIEF, DIVISION OF LAND DEVELOPMENT AND TRANSPORTATION PLANNING DATE

- Notes:
- Standard 7" Comb. curb and gutter shall be in accordance with County Standard D-40, Page 25.
 - Paving (6%) shall be in accordance with County Standard D-11, Page 66.
 - Transition from Standard 7" Comb. curb and gutter to depressed curb and gutter shall be in accordance with detail shown on Dwg 2 of 6.

Rev. Date	Rev. No.	Revision Description

COLUMBIA
 2ND ELECTION DISTRICT
 HOWARD COUNTY, MARYLAND

OWNER AND DEVELOPER
 HOWARD HOMES, INC.

PROJECT AREA
VILLAGE OF OWEN BROWN
 SECTION 1, AREA 1
 RESUBDIVISION OF PARCEL X

PROJECT TITLE
 Plan & Profile
 SWEET FERN
 and
 WOVEN MOONBEAM

SCALE: As Shown DATE: August 14, 1972

WHITMAN, REQUARDT & ASSOCIATES
 ENGINEERS
 BALTIMORE, MARYLAND 21202

Kenneth A. McCord
 KENNETH A. McCORD
 Registered Engineer
 No. 1974

DIVISION OF LAND DEVELOPMENT AND TRANSPORTATION PLANNING
 HOWARD COUNTY, MARYLAND
 DATE 9/11/72
 J. J. J.

FRIETCHIE ROW

± CURVE DATA

PC 1+77.23 to PT 4+67.29
 $\Delta = 46^{\circ}09'50''$ tan = 153.42'
 $r = 360.00'$ chd = 282.27'
 $L = 290.06'$ brg = $N77^{\circ}09'09''W$

LOOP CURVE DATA

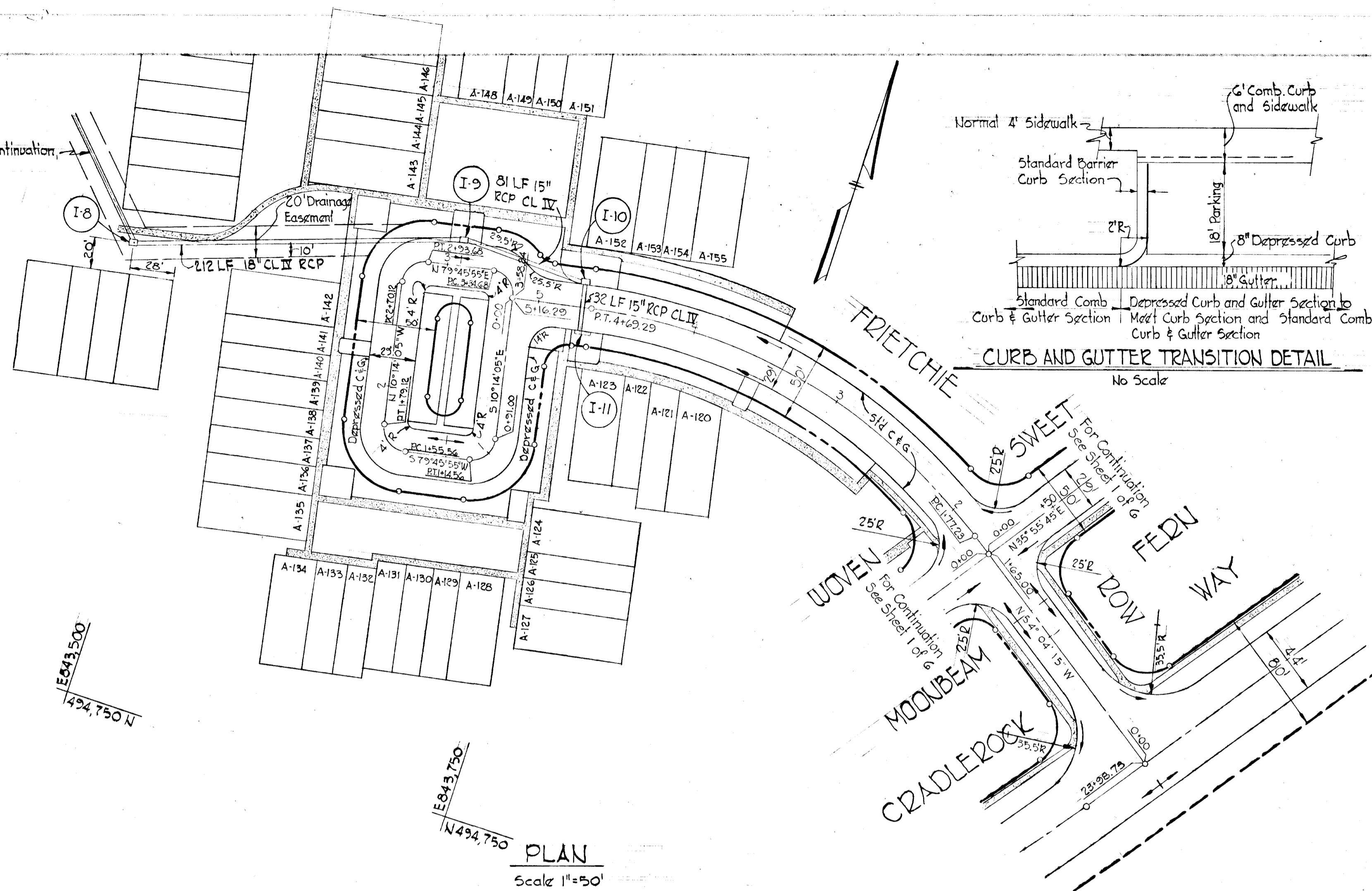
PC 0+91.00 to PT 1+14.56 PC 1+55.56 to PT 1+79.12
 $\Delta = 90^{\circ}00'00''$ tan = 15.00' $\Delta = 90^{\circ}00'00''$ tan = 15.00'
 $r = 15.00'$ chd = 21.21' $r = 15.00'$ chd = 21.21'
 $L = 23.56'$ brg = $S34^{\circ}45'55''W$ $L = 23.56'$ brg = $N55^{\circ}14'05''W$

PC 2+70.12 to PT 2+93.68 PC 3+34.68 to PT 3+58.24
 $\Delta = 90^{\circ}00'00''$ tan = 15.00' $\Delta = 90^{\circ}00'00''$ tan = 15.00'
 $r = 15.00'$ chd = 21.21' $r = 15.00'$ chd = 21.21'
 $L = 23.56'$ brg = $N34^{\circ}45'55''E$ $L = 23.56'$ brg = $S55^{\circ}14'05''E$

STORM DRAIN STRUCTURE SCHEDULE

No.	Type	Top El.	Inv. Out	Location
I-1	"A-5" Inlet width = 2.5'	339.20	335.08	± Inlet 15.75' right ± Sta. 2+18
I-2	"A-5" Inlet width = 2.5'	345.19	340.46	± Inlet 15.75' left ± Sta. 0+64
I-3	"A-5" Inlet width = 2.5'	345.19	340.28	± Inlet 15.75' right ± Sta. 0+66
I-4	"A-5" Inlet width = 2.5'	348.90	343.47	± Inlet 15.75' left ± Sta. 3+33
I-5	"A-10" Inlet width = 2.5'	348.90	344.18	± Inlet 15.75' left ± Sta. 0+46
I-6	"A-5" Inlet width = 2.5'	370.30	366.10	± Inlet 15.75' left ± Sta. 2+20
I-7	"A-5" Inlet width = 2.5'	335.30	329.13	± Inlet 15.75' right ± Sta. 2+39.23
I-8	"C" Inlet See Detail Sheet	341.00	332.43	See Plan and Profile (One throat opening)
I-9	"A-5" Inlet width = 2.5'	358.00	352.98	± Inlet 15.75' left ± Sta. 3+14
I-10	"A-5" Inlet width = 2.5'	358.90	354.25	± Inlet 15.75' right ± Sta. 4+73.5
I-11	"A-10" Inlet width = 2.5'	358.90	354.89	± Inlet 15.75' left ± Sta. 4+71
I-12	"A-5" Inlet width = 2.5'	322.95	323.39	± Inlet 15.75' left ± Sta. 11+37
I-13	"A-5" Inlet width = 2.5'	332.07	327.87	± Inlet 15.75' right ± Sta. 9+18
MH-1	Standard Manhole	306.00	299.40	See Plan and Profile
MH-2	Standard Manhole	332.80	327.05	See Plan and Profile
MH-3	Standard Manhole	315.00	308.41	See Plan and Profile
MH-4	Standard Manhole	336.00	327.75	See Plan and Profile
S-1	"C" Endwall	300.80	298.80	See Plan and Profile
S-2	"C" Endwall	311.30	308.30	See Plan and Profile
S-3	"C" Endwall	330.08	328.08	See Plan and Profile
MH-5	Modified Drop Manhole	333.00	329.48	See Plan and Profile
MH-6	Standard Manhole	359.00	353.50	See Plan and Profile

For Storm Drain Continuation
 See Sheet 4 of 6



CURB AND GUTTER TRANSITION DETAIL
 No Scale

PLAN
 Scale 1" = 50'

DEPARTMENT OF PUBLIC WORKS
D. M. McLeod 10/19/72
 CHIEF, BUREAU OF HIGHWAYS DATE
OFFICE OF PLANNING AND ZONING
 CHIEF, DIVISION OF LAND DEVELOPMENT AND TRANSPORTATION PLANNING DATE

Rev. Date	Rev. No.	Revision Description

COLUMBIA
 6TH ELECTION DISTRICT
 HOWARD COUNTY, MARYLAND

OWNER AND DEVELOPER
 HOWARD HOWES, INC.

PROJECT AREA
VILLAGE OF OWEN BROWN
 SECTION 1, AREA 1
 RESUBDIVISION OF PARCEL 'A'

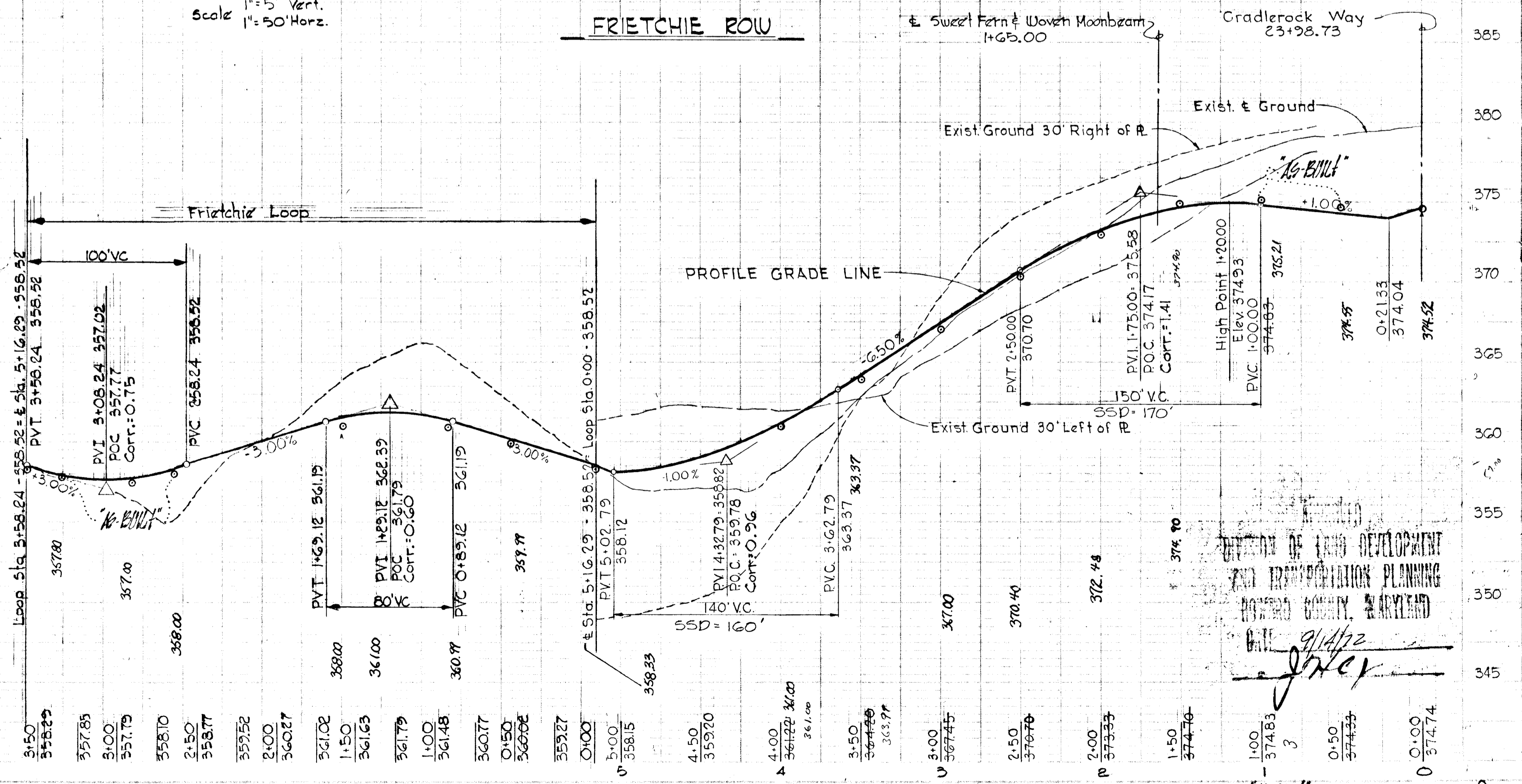
PROJECT TITLE
PLAN & PROFILE
FRIETCHIE ROW

SCALE: AS SHOWN DATE August 14, 1972

WHITMAN, REARDT & ASSOCIATES
 ENGINEERS
 BALTIMORE, MARYLAND 21202

Kenneth A. McCord
 KENNETH A. McCORD
 Registered Engineer
 No. 1974

PROFILE
 Scale 1" = 5' Vert.
 1" = 50' Horiz.



DEPARTMENT OF LAND DEVELOPMENT AND TRANSPORTATION PLANNING
 HOWARD COUNTY, MARYLAND
 DATE 9/14/72
J. J. J.

PC 1+00 to Int. 1+65
 $\Delta = 3^\circ 23' 08''$ T = 32.51'
 R = 1100.00' Chd = 64.99'
 L = 65.00' Ch. Brq. = N12°26'34"W

Int. 1+65 to Int. 3+17.16
 $\Delta = 7^\circ 55' 32''$ Tan = 76.20'
 R = 1100.00' Chd = 152.04'
 L = 152.16' Brq. = N18°05'55"W

Int. 3+17.16 to P.C.C. 4+41.47
 $\Delta = 6^\circ 28' 30''$ Tan = 62.22'
 R = 1100.00' Chd = 124.25'
 L = 124.31' Brq. = N25°17'52"W

P.C.C. 4+41.47 to Int. 5+61.46
 $\Delta = 27^\circ 29' 58''$ Tan = 61.17'
 R = 250.00' Chd = 116.84'
 L = 119.99' Brq. = N42°17'10"W

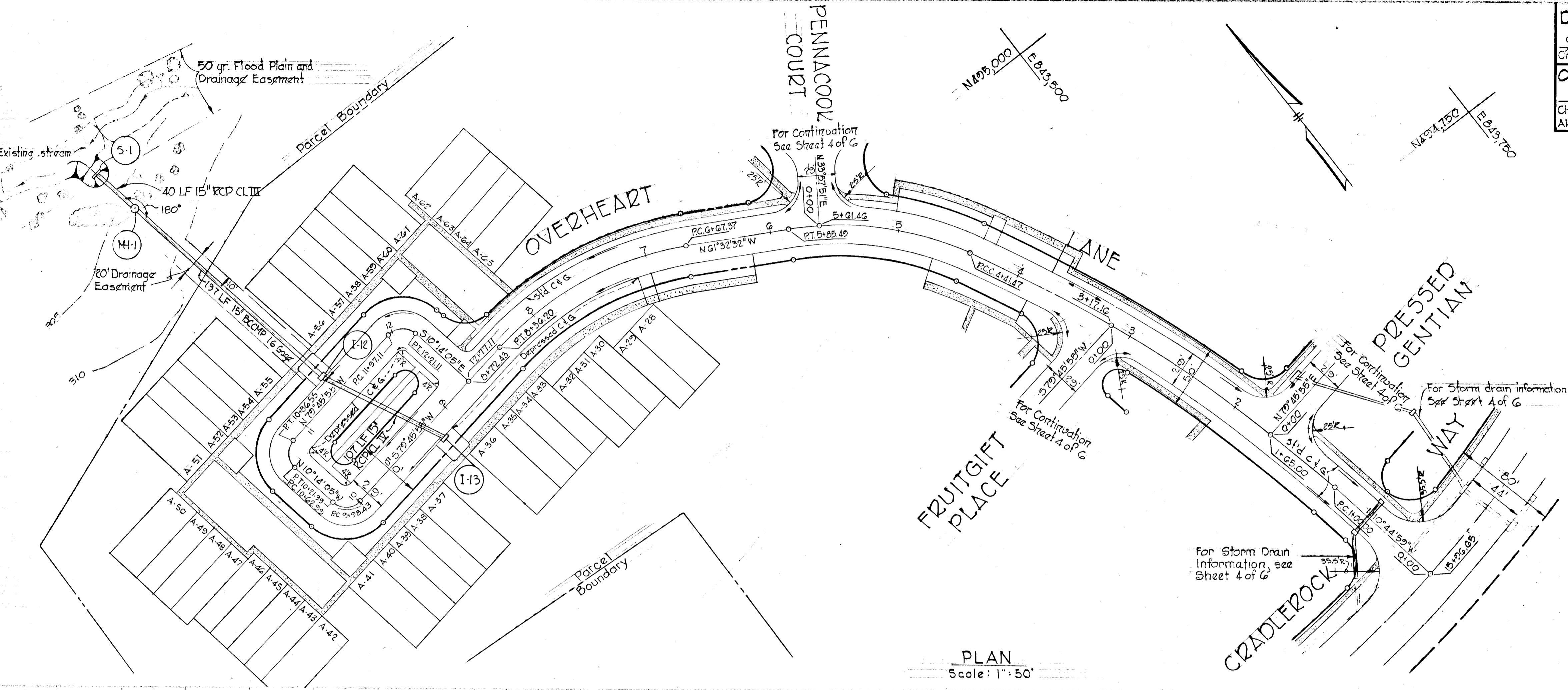
Int. 5+61.46 to P.T. 5+85.49
 $\Delta = 5^\circ 30' 23''$ Tan = 12.02'
 R = 250.00' Chd = 24.02'
 L = 24.03' Brq. = N58°47'20"W

P.C. 6+67.37 to P.T. 8+56.20
 $\Delta = 38^\circ 41' 33''$ Tan = 87.77'
 R = 250.00' Chd = 145.64'
 L = 146.63' Brq. = N80°53'19"W

P.C. 9+58.43 to P.T. 10+21.99
 $\Delta = 90^\circ 00' 00''$ Tan = 15.00'
 R = 15.00' Chd = 21.21'
 L = 23.56' Brq. = N55°14'05"W

P.C. 10+62.99 to P.T. 10+86.55
 $\Delta = 90^\circ 00' 00''$ Tan = 15.00'
 R = 15.00' Chd = 21.21'
 L = 23.56' Brq. = N55°14'05"E

P.C. 11+97.55 to P.T. 12+21.11
 $\Delta = 90^\circ 00' 00''$ Tan = 15.00'
 R = 15.00' Chd = 21.21'
 L = 23.56' Brq. = N55°14'05"E



PLAN
 Scale: 1" = 50'

Rev. Date	Rev. No.	Revision Description

COLUMBIA
 6th ELECTION DISTRICT
 HOWARD COUNTY, MARYLAND

OWNER AND DEVELOPER
 HOWARD HOMES, INC.

PROJECT AREA
VILLAGE OF OWEN BROWN
 SECTION 1, AREA 1
 RESUBDIVISION OF PARCEL "A"

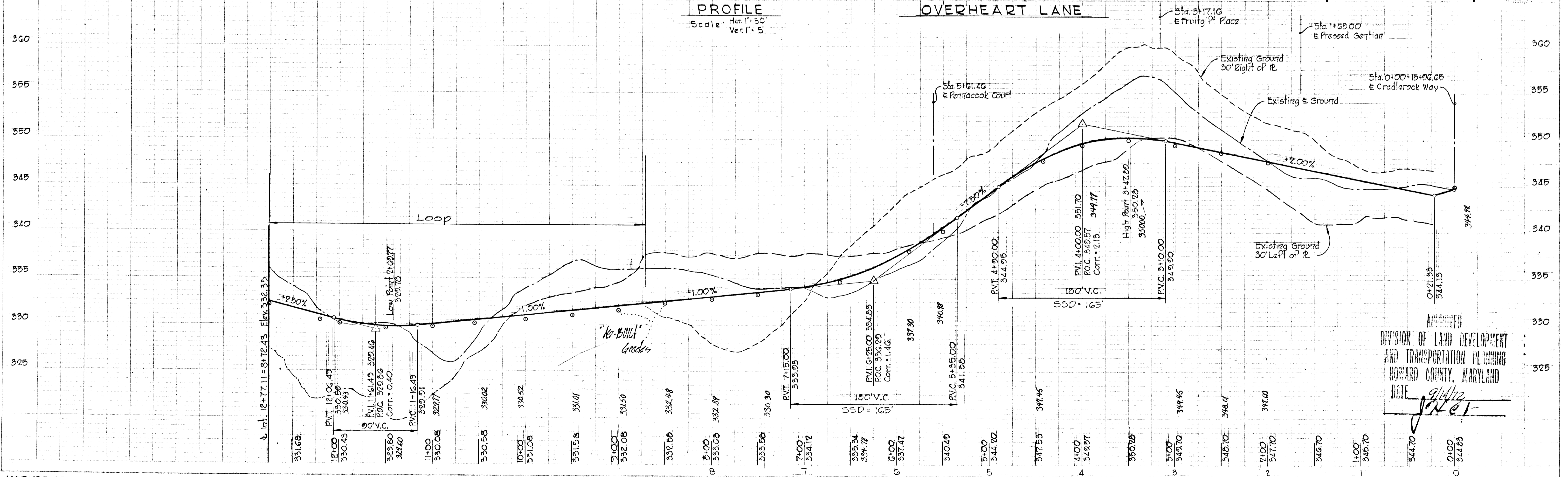
PROJECT TITLE
 PLAN & PROFILE
 OVERHEART LANE

SCALE As Shown DATE August 14, 1972

WHITMAN, DEQUARDT & ASSOCIATES
 ENGINEERS
 BALTIMORE, MARYLAND 21202

Kenneth A. Mc Cord
 KENNETH A. MC CORD
 Registered Engineer
 No. 1974

PROFILE
 Scale: Hor. 1" = 50'
 Vert. 1" = 5'



APPROVED
 DIVISION OF LAND DEVELOPMENT AND TRANSPORTATION PLANNING
 HOWARD COUNTY, MARYLAND
 DATE 9/4/72
J. H. ...

CURVE DATA

PRESSED GENTIAN

PC 1.75 to PT 1.9856
 $\Delta: 90^{\circ}00'00''$ Tan: 15.00'
 $R: 15.00'$ Ch: 21.21'
 $L: 23.56'$ Ch.Brg: 534'45.55'W

PC 2.2456 to PT 2.4812
 $\Delta: 90^{\circ}00'00''$ Tan: 15.00'
 $R: 15.00'$ Ch: 21.21'
 $L: 23.56'$ Ch.Brg: 534'45.55'W

PC 3.3212 to PT 3.6268
 $\Delta: 90^{\circ}00'00''$ Tan: 15.00'
 $R: 15.00'$ Ch: 21.21'
 $L: 23.56'$ Ch.Brg: 534'45.55'W

PC 1.7387 to PT 1.9743
 $\Delta: 90^{\circ}00'00''$ Tan: 15.00'
 $R: 15.00'$ Ch: 21.21'
 $L: 23.56'$ Ch.Brg: 534'45.55'W

PC 2.3843 to PT 2.6199
 $\Delta: 90^{\circ}00'00''$ Tan: 15.00'
 $R: 15.00'$ Ch: 21.21'
 $L: 23.56'$ Ch.Brg: 534'45.55'W

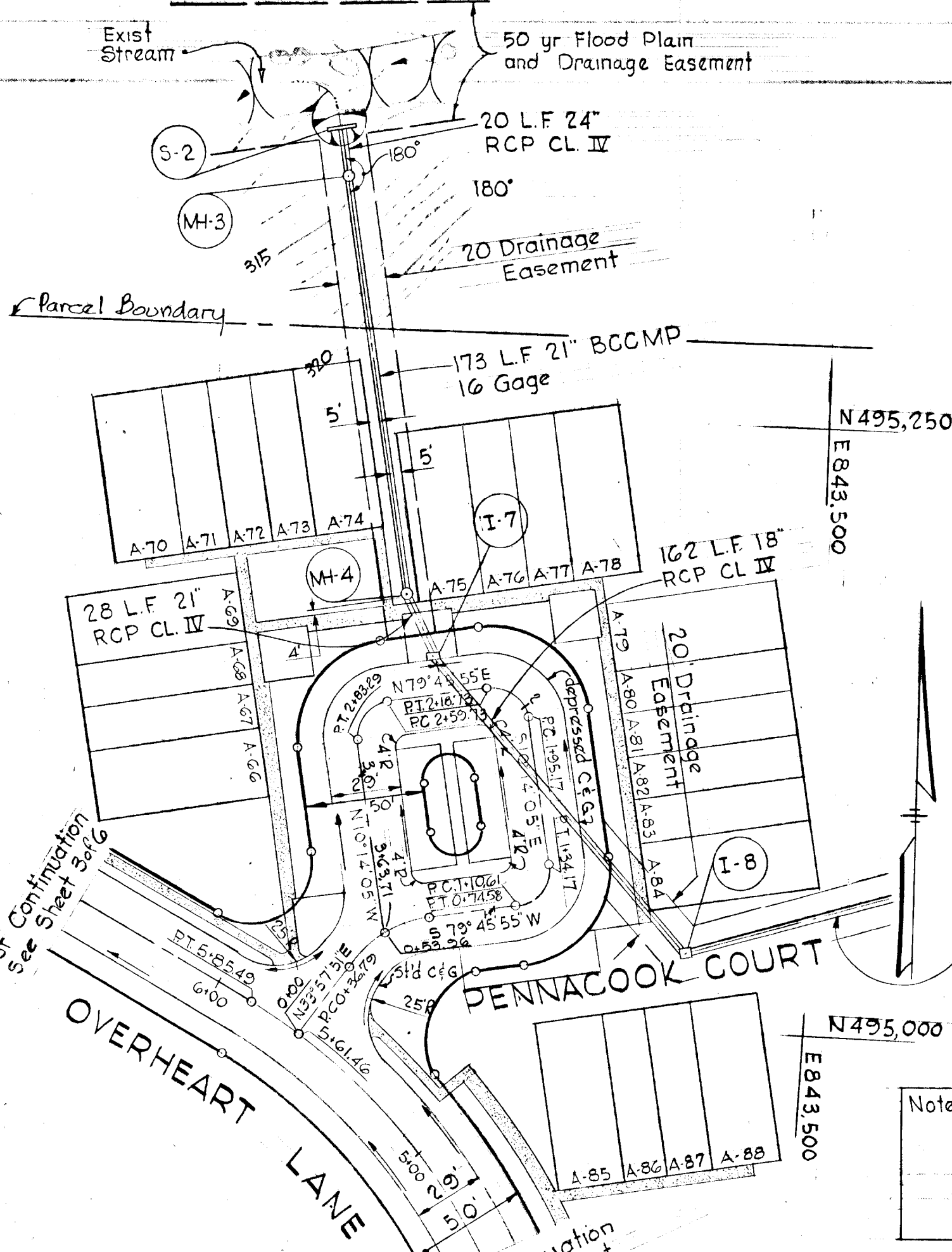
PC 3.5239 to PT 3.7655
 $\Delta: 90^{\circ}00'00''$ Tan: 15.00'
 $R: 15.00'$ Ch: 21.21'
 $L: 23.56'$ Ch.Brg: 534'45.55'W

PC 0.3679 to PT 0.5396
 $\Delta: 20^{\circ}48'45''$ Tan: 8.68'
 $R: 47.27'$ Ch: 17.08'
 $L: 17.17'$ Ch.Brg: 144'22'14'E

PC 2.5273 to PT 2.8379
 $\Delta: 90^{\circ}00'00''$ Tan: 15.00'
 $R: 15.00'$ Ch: 21.21'
 $L: 23.56'$ Ch.Brg: 534'45.55'W

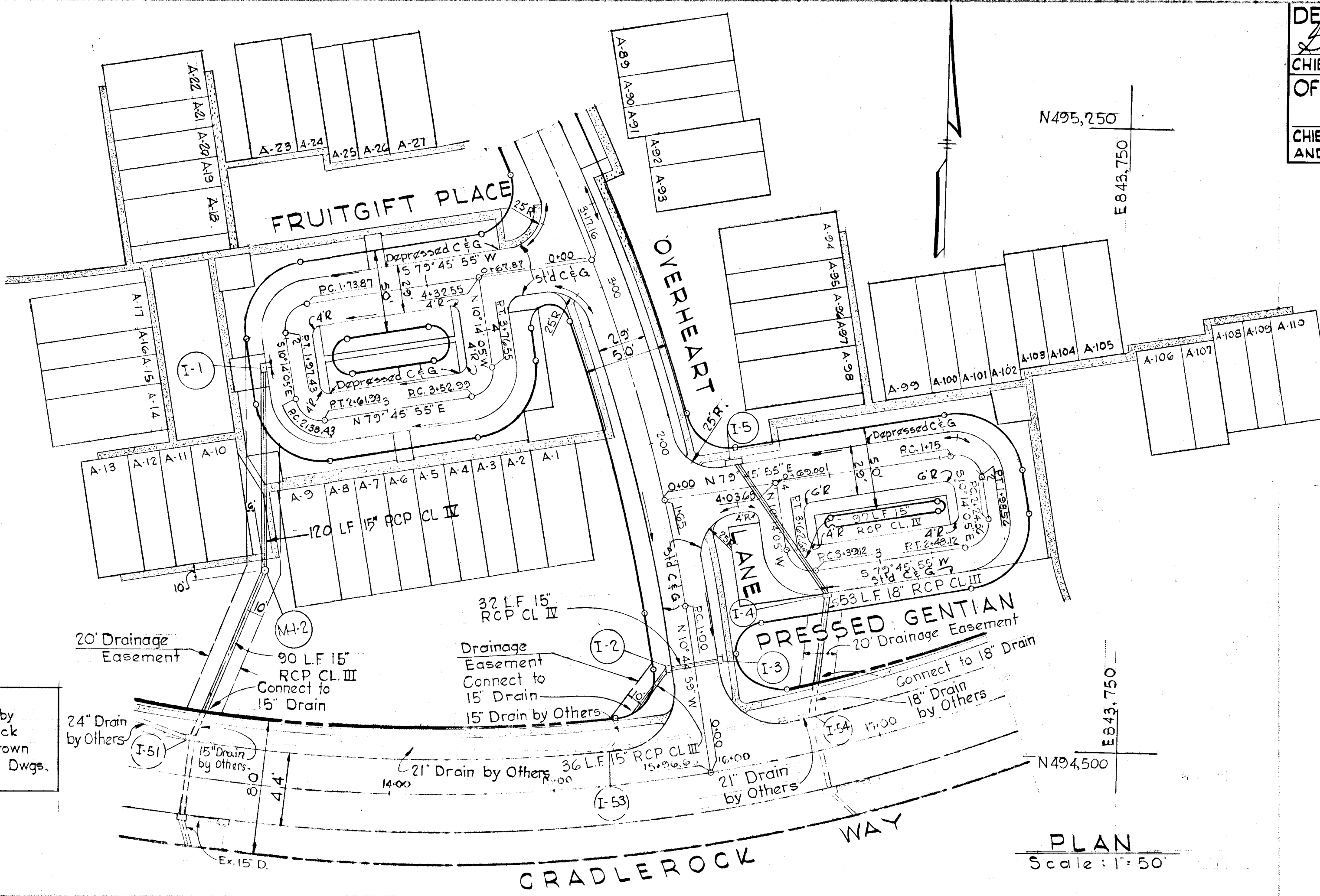
PC 1.2517 to PT 1.5173
 $\Delta: 90^{\circ}00'00''$ Tan: 15.00'
 $R: 15.00'$ Ch: 21.21'
 $L: 23.56'$ Ch.Brg: 534'45.55'W

PC 1.4061 to PT 1.3417
 $\Delta: 90^{\circ}00'00''$ Tan: 15.00'
 $R: 15.00'$ Ch: 21.21'
 $L: 23.56'$ Ch.Brg: 534'45.55'W



Note:
 For Storm Drains by Others (Cradlerock Way), See Owen Brown Road Construction Dwgs. sheets 243 of 53

PLAN
 Scale: 1" = 50'

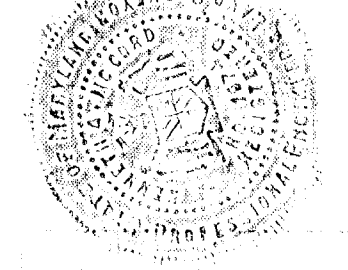


PLAN
 Scale: 1" = 50'

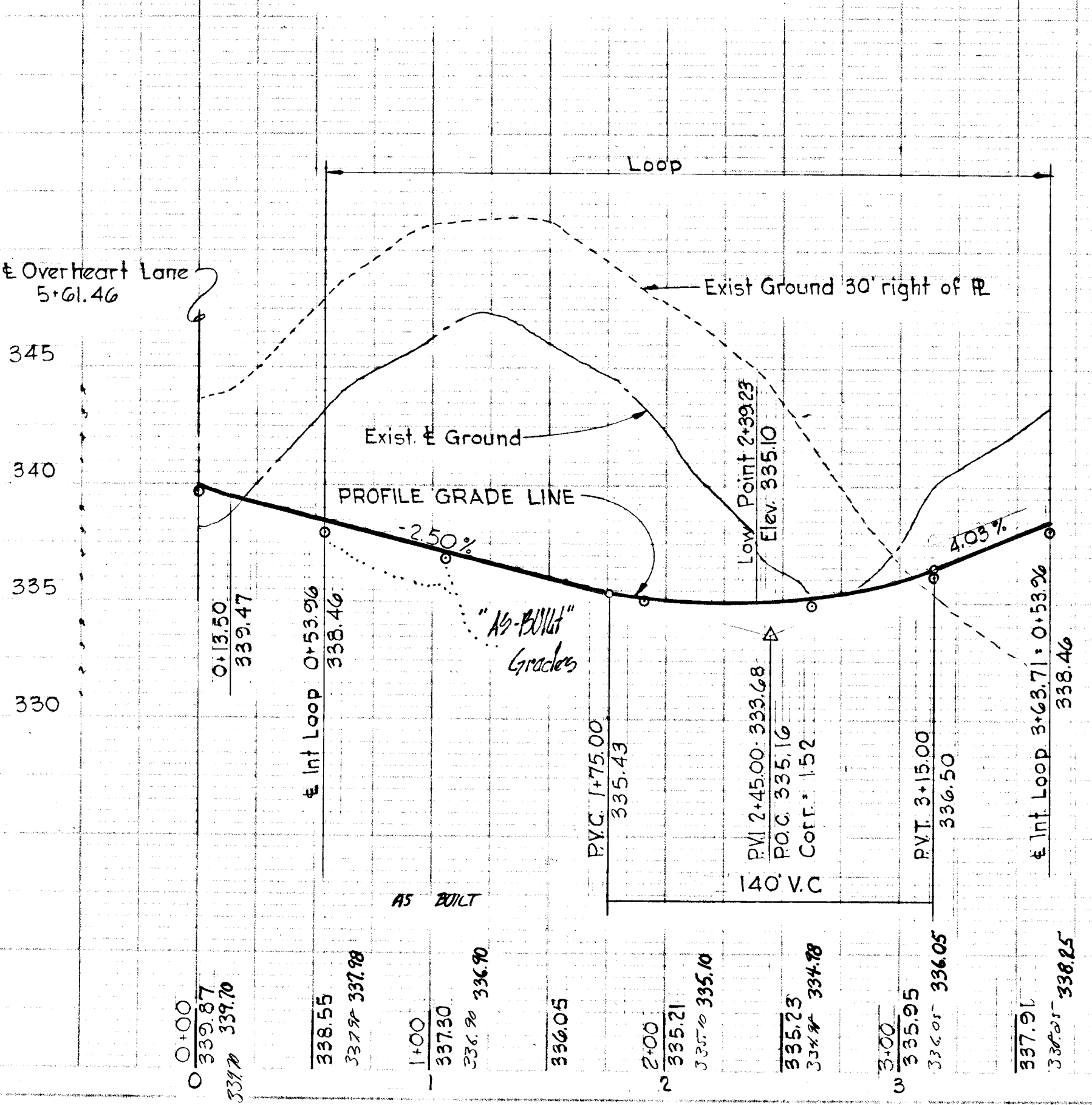
DEPARTMENT OF PUBLIC WORKS
 D. M. Peeland 10/19/72
 CHIEF, BUREAU OF HIGHWAYS DATE
 OFFICE OF PLANNING AND ZONING
 CHIEF, DIVISION OF LAND DEVELOPMENT AND TRANSPORTATION PLANNING DATE

Rev/Date	Rev.No.	Revision Description
COLUMBIA		
7 TH ELECTION DISTRICT HOWARD COUNTY, MARYLAND		
OWNER AND DEVELOPER HOWARD HOMES, INC.		
PROJECT AREA		
VILLAGE OF OWEN BROWN SECTION I, AREA 1 RESUBDIVISION OF PARCEL "A"		
PROJECT TITLE		
PLAN & PROFILE PRESSED GENTIAN FRUITGIFT PLACE PENNACOOK COURT		
SCALE: As Shown		DATE: August 14, 1972
WHITMAN, REQUARDT & ASSOCIATES ENGINEERS BALTIMORE, MARYLAND 21202		

Kenneth A. McCord
 KENNETH A. MCCORD
 Registered Engineer
 No. 1974

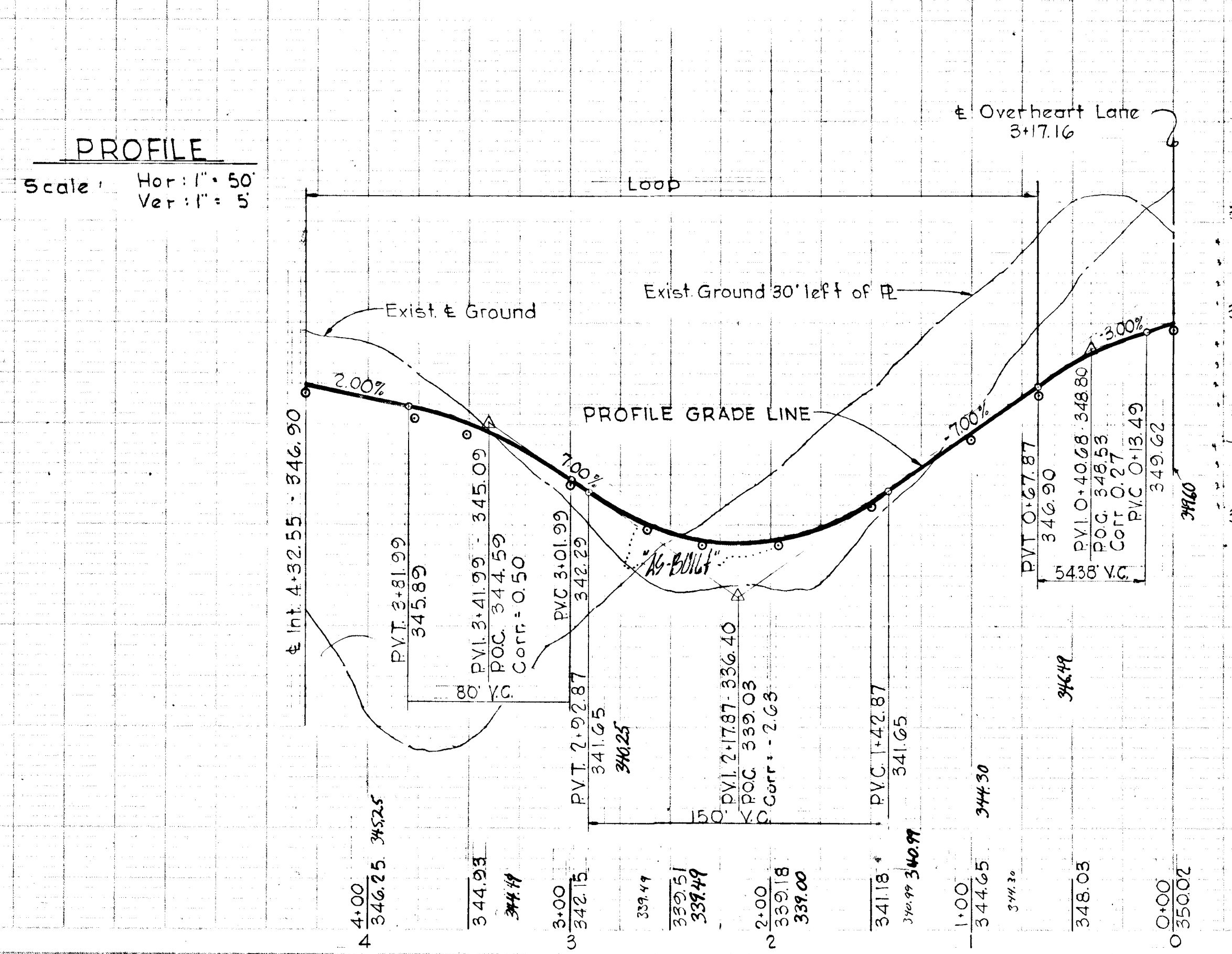


PENNACOOK COURT



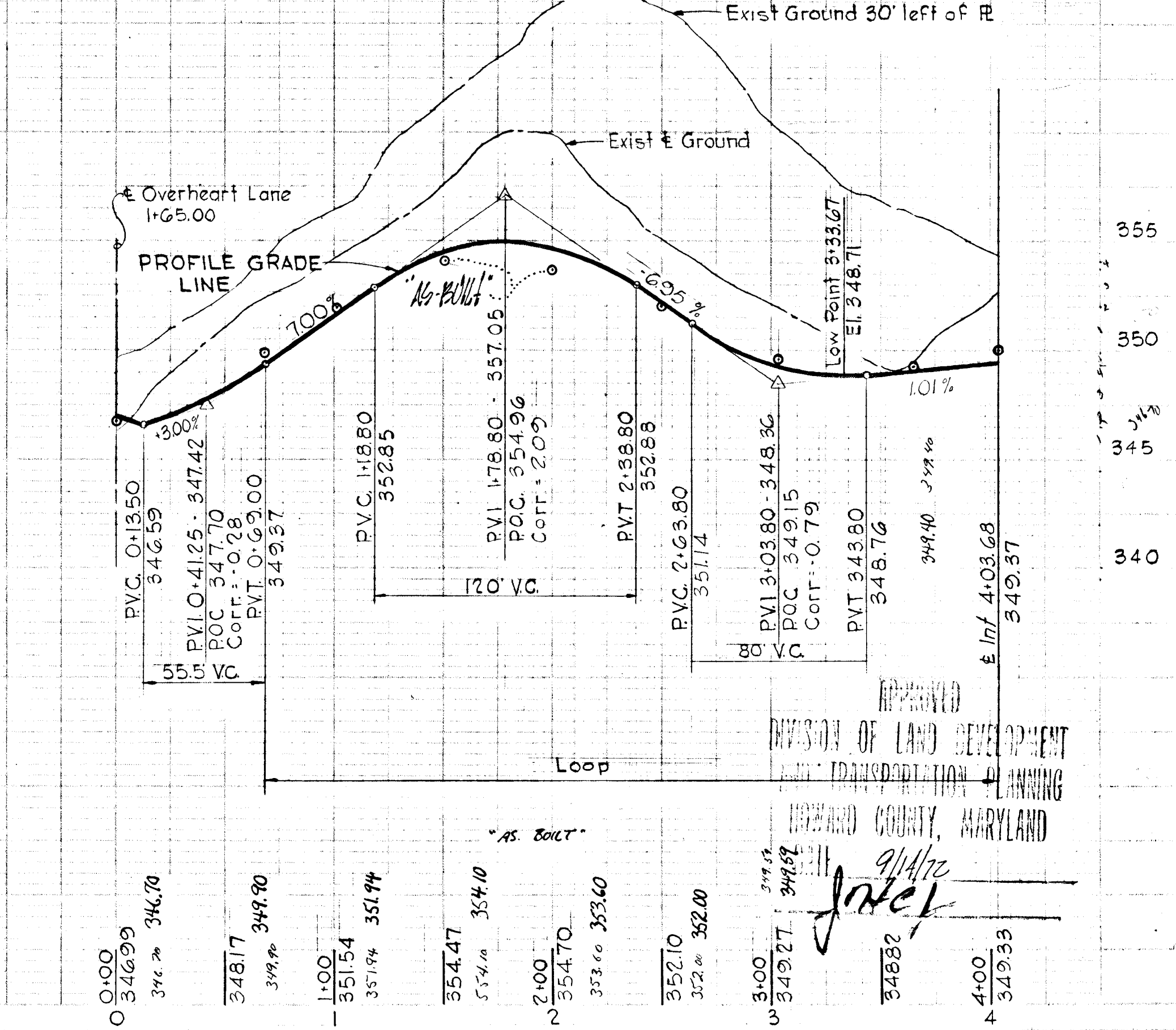
WO 6540-2
 #61

FRUITGIFT PLACE



WO 6540-2
 #61

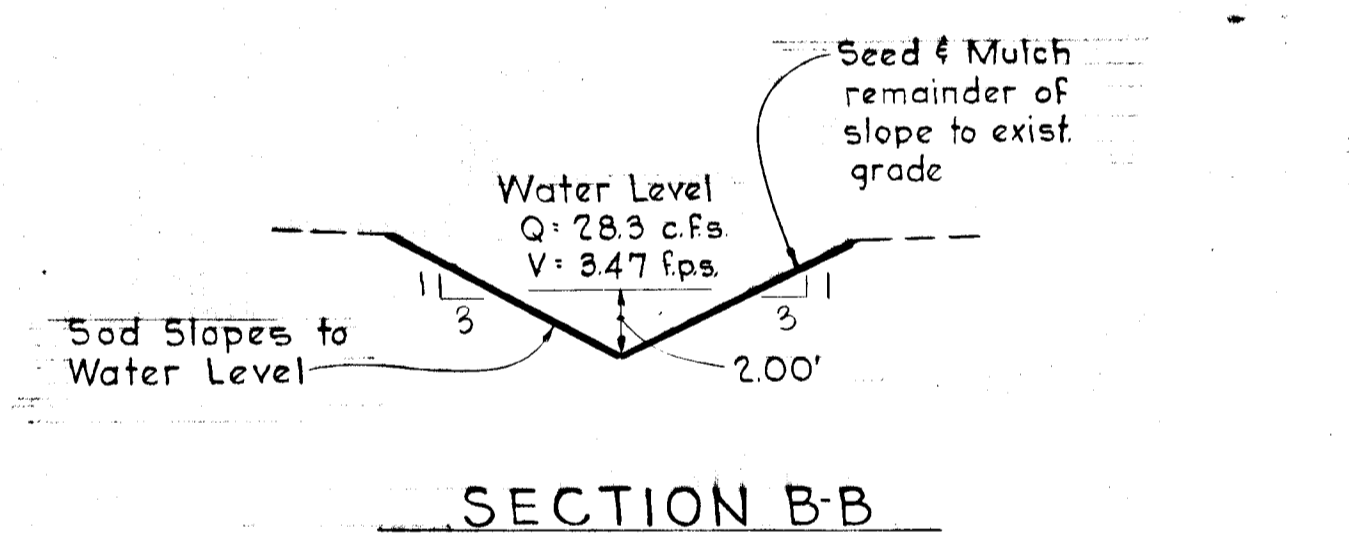
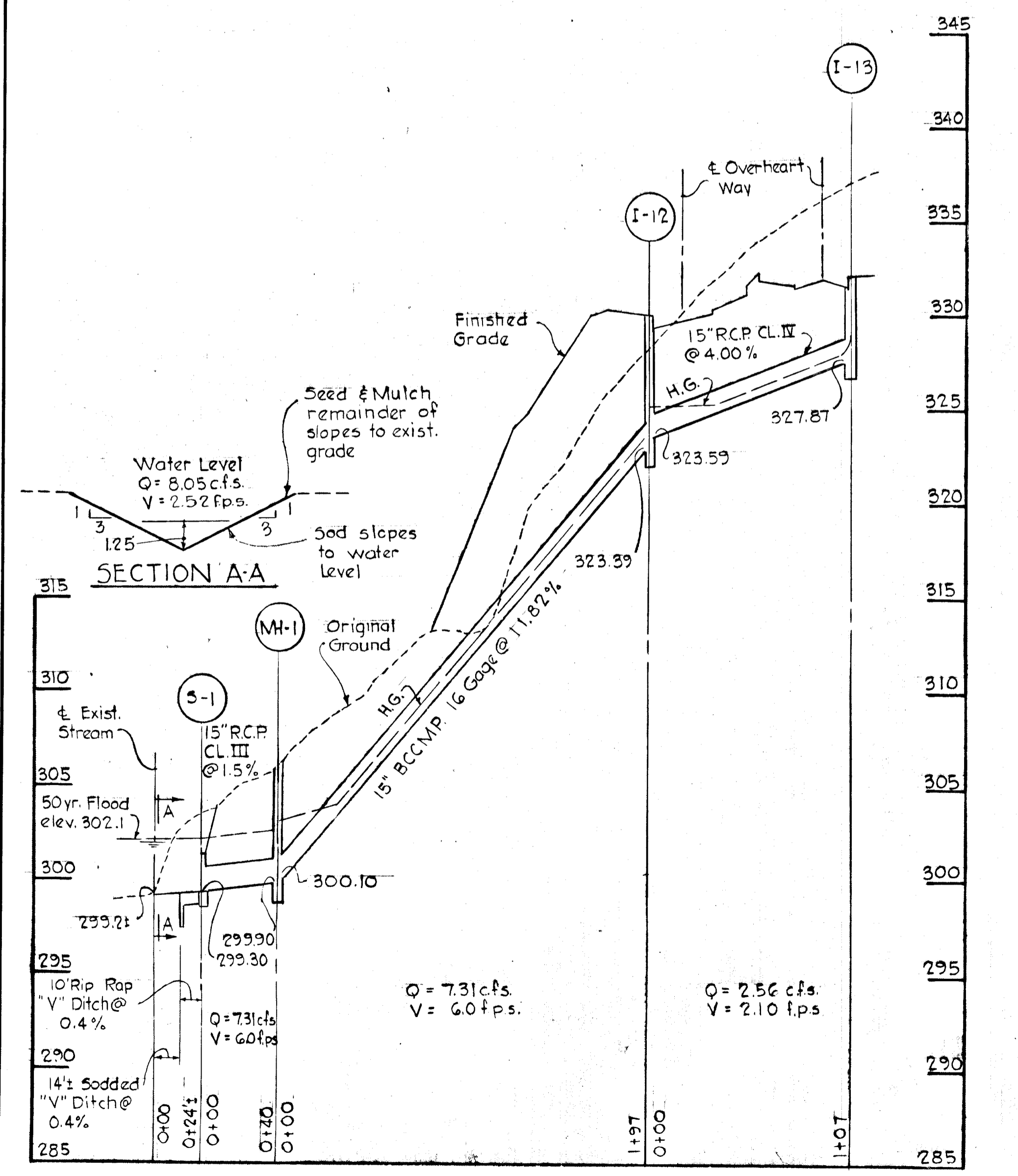
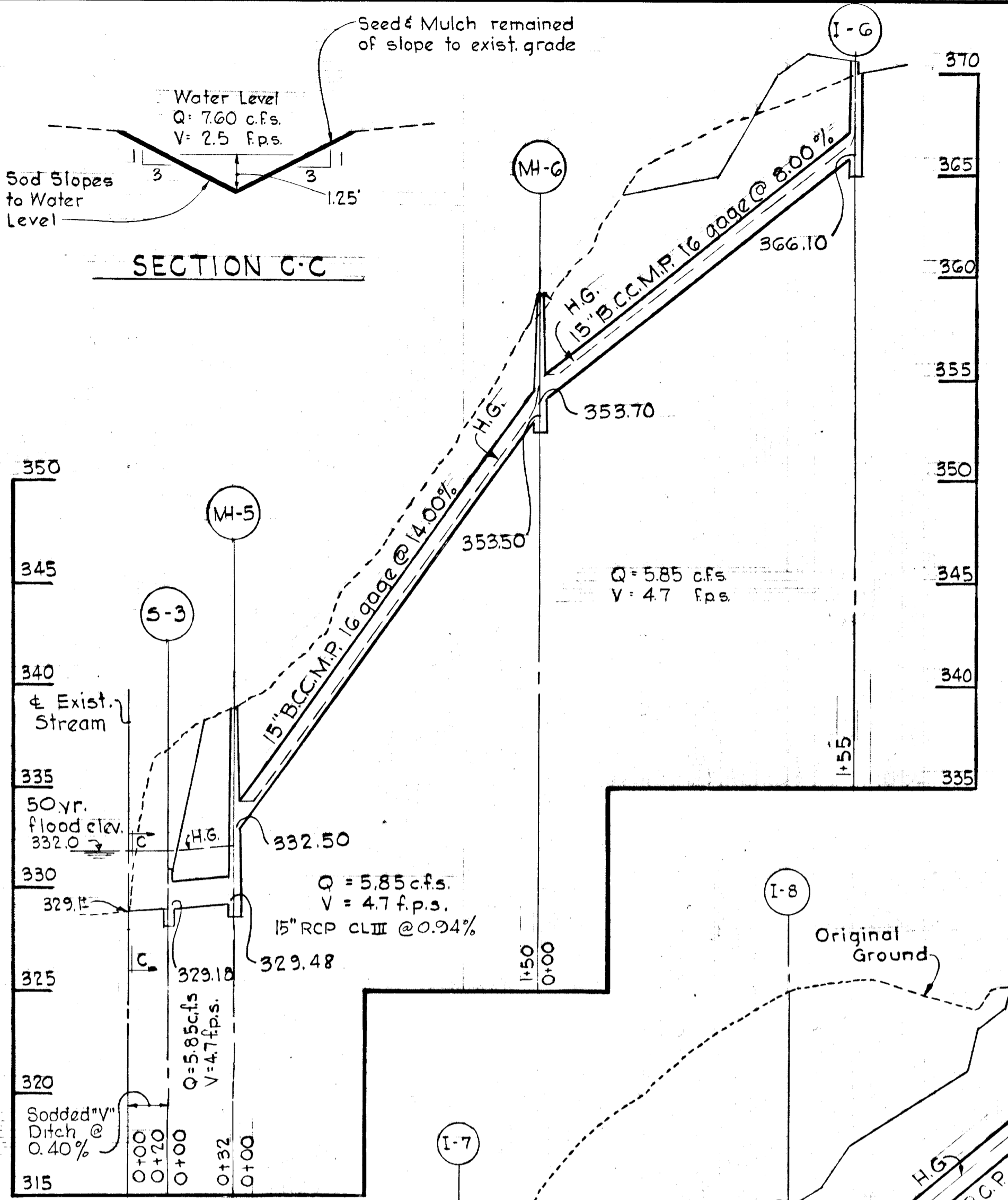
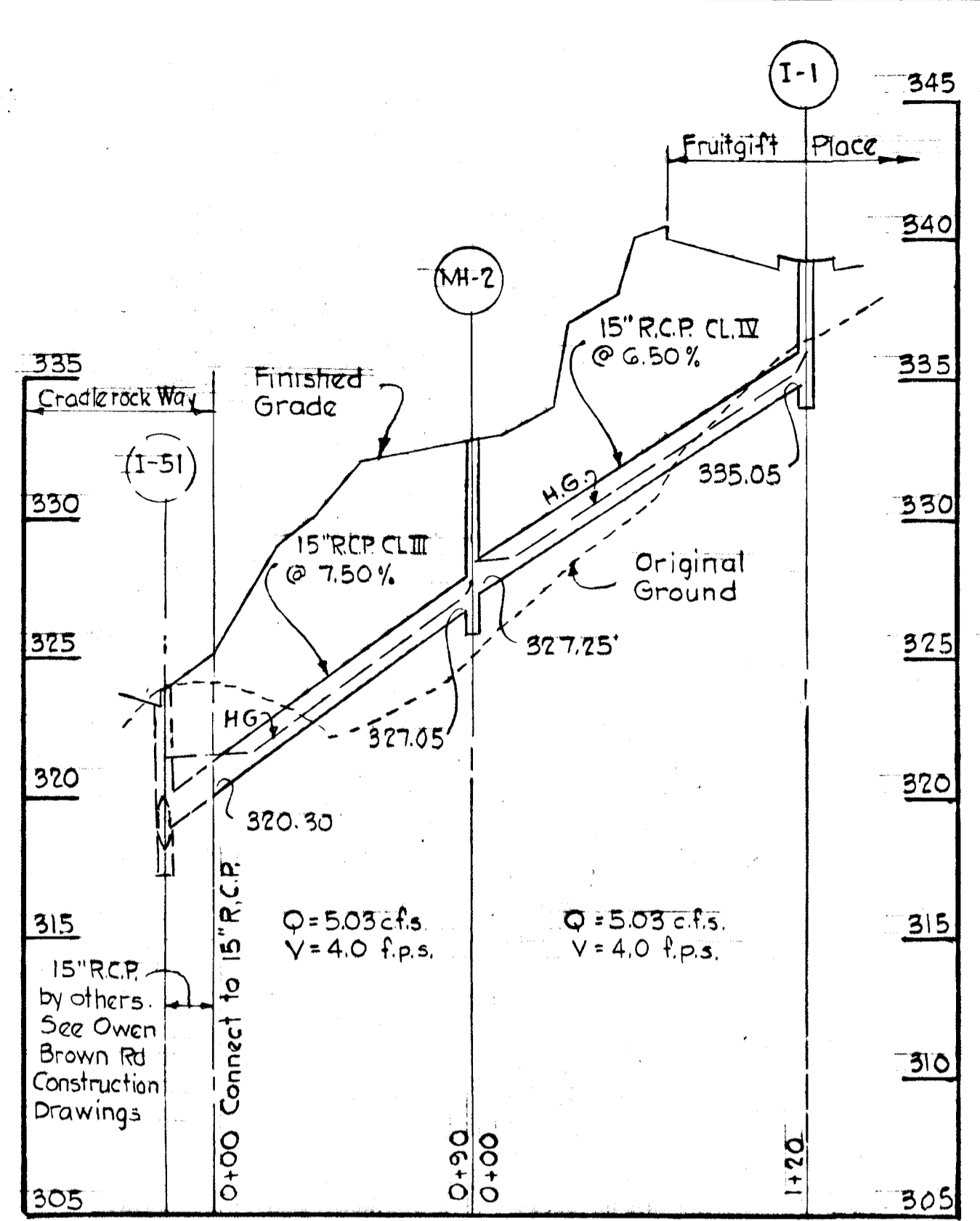
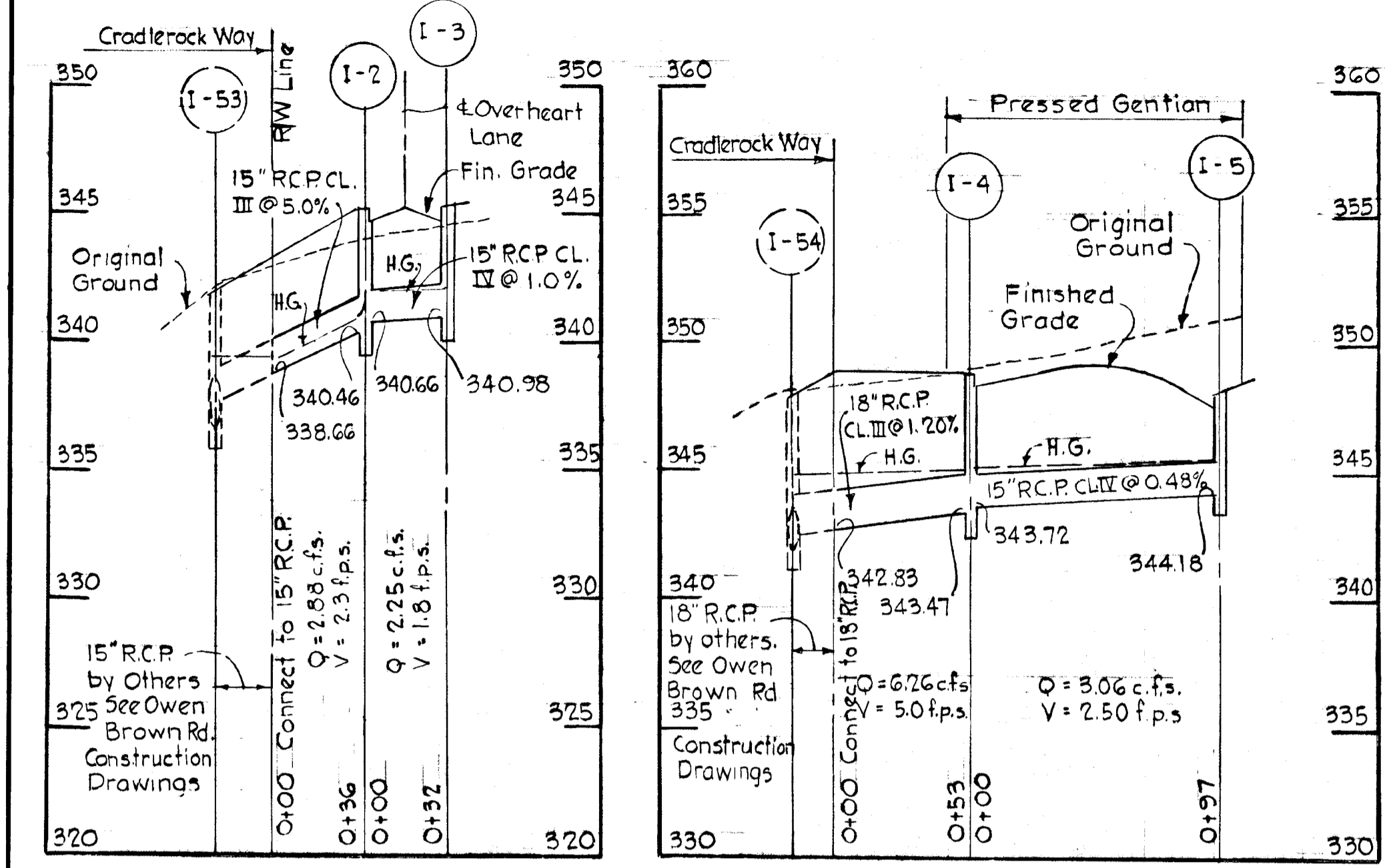
PRESSED GENTIAN



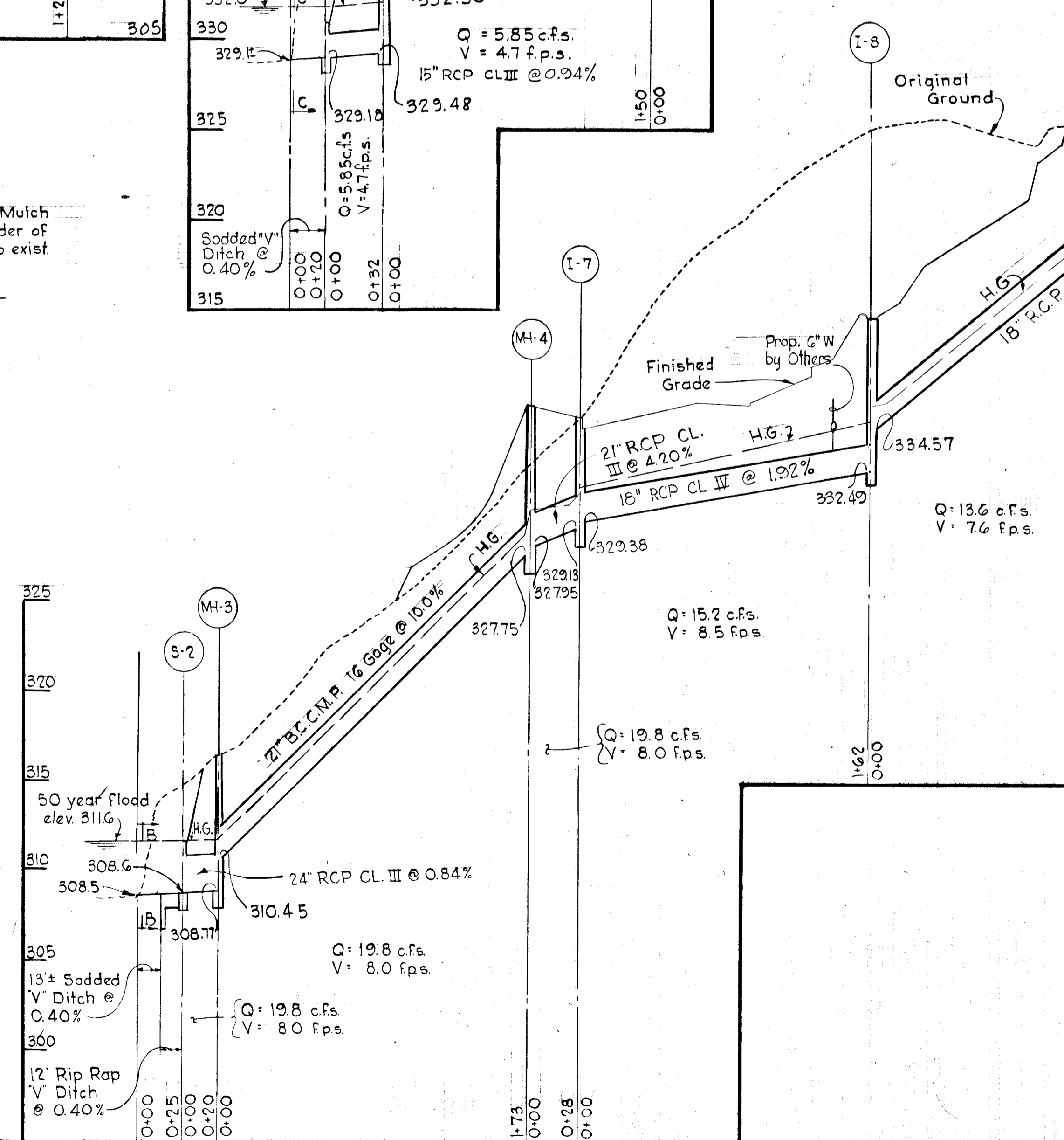
WO 6540-2
 #61

APPROVED
 DIVISION OF LAND DEVELOPMENT AND TRANSPORTATION PLANNING
 HOWARD COUNTY, MARYLAND
 9/14/72
John
 3-13-72

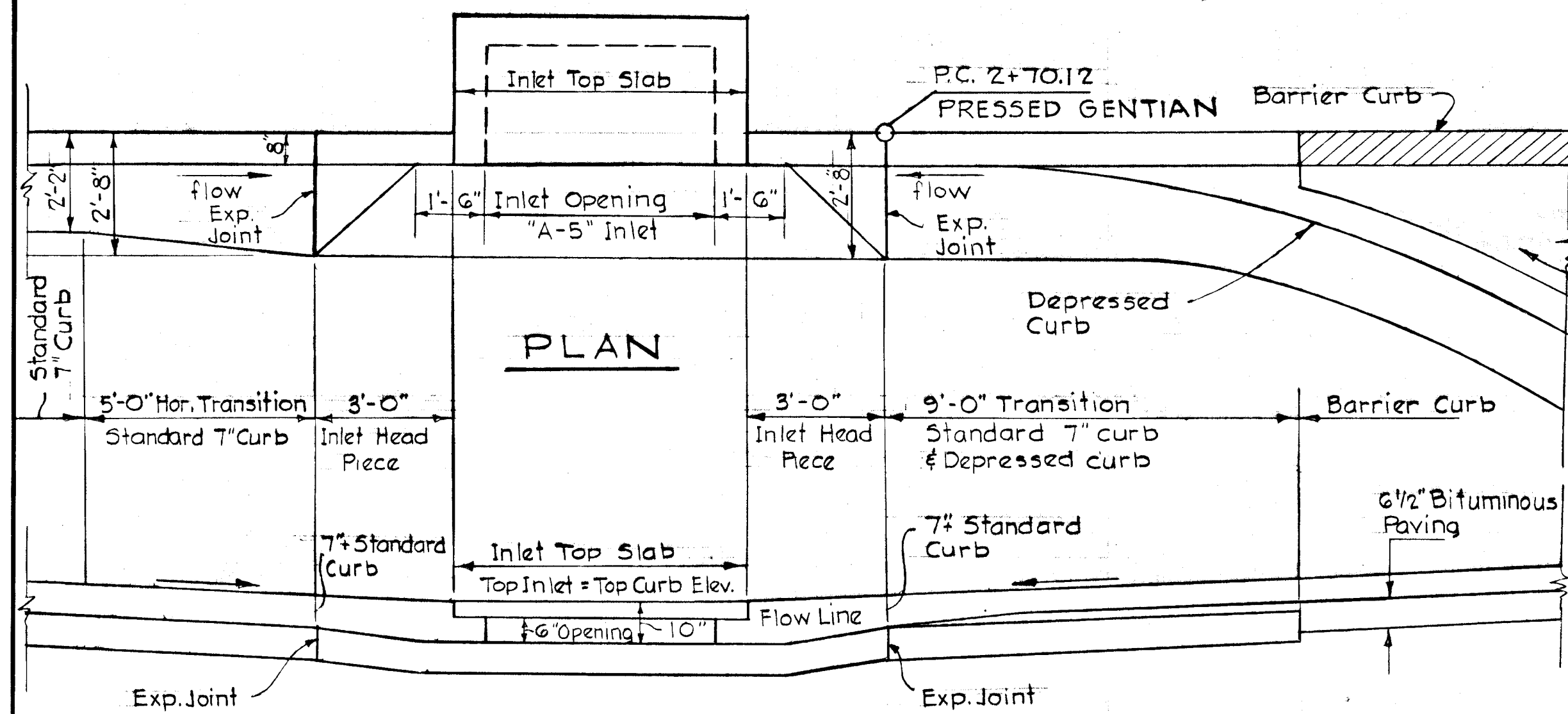
APPROVED
 DIVISION OF LAND DEVELOPMENT
 AND TRANSPORTATION PLANNING
 HOWARD COUNTY, MARYLAND
 DATE *10/19/72*
J. J. J.



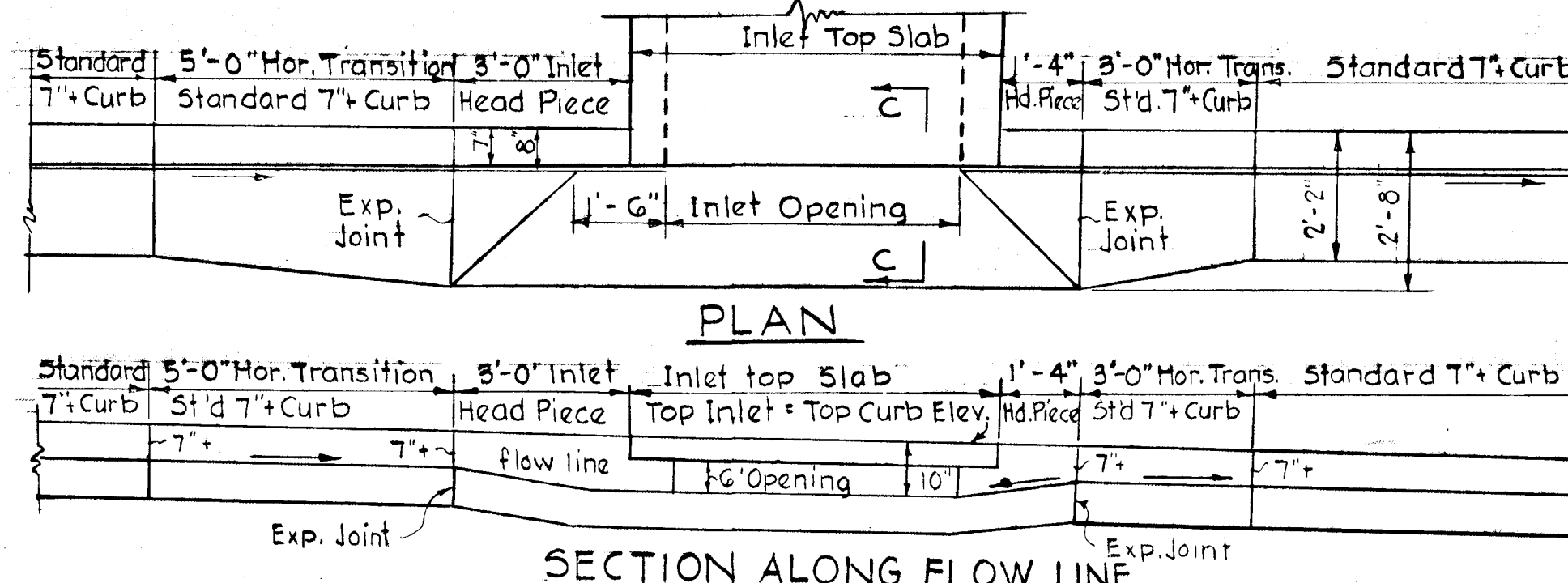
PROFILE
 Hor: 1" = 50'
 Scale: Ver: 1" = 5'



Rev. Date	Rev. No.	Revision Description
COLUMBIA 6 TH ELECTION DISTRICT HOWARD COUNTY, MARYLAND OWNER AND DEVELOPER HOWARD HOMES, INC.		
PROJECT AREA VILLAGE OF OWEN BROWN SECTION 1, AREA 1 RESUBDIVISION OF PARCEL 'A'		
PROJECT TITLE STORM DRAIN PROFILES		
SCALE: As Shown		DATE: August 14, 1972
WHITMAN, REQUARDT & ASSOCIATES ENGINEERS BALTIMORE, MARYLAND 21202		
<i>Kenneth A. McCord</i> KENNETH A. MCCORD Registered Engineer No. 1974		

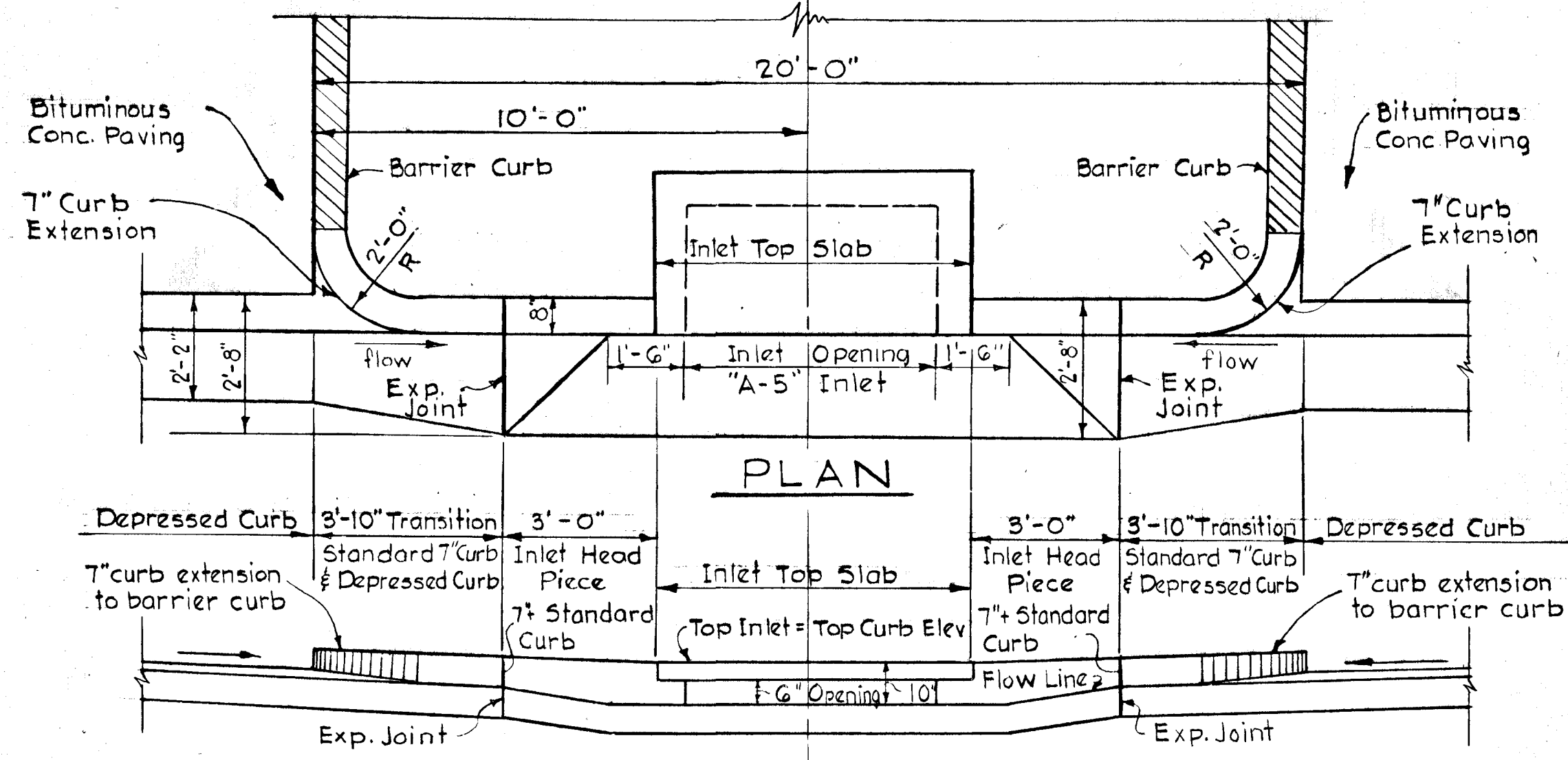


SECTION ALONG FLOW LINE
SUMPED "A" INLET I-4
 Scale 3/8" = 1'-0"

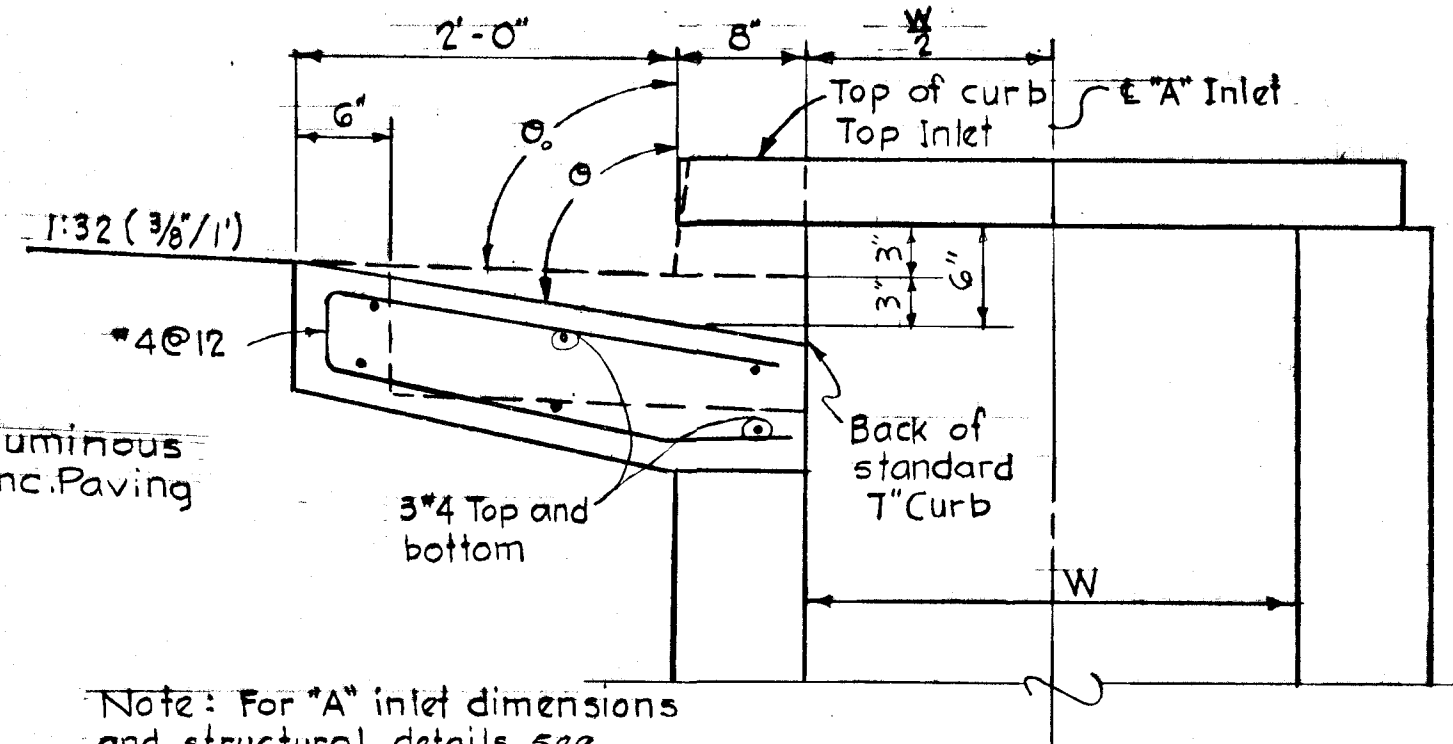


SECTION ALONG FLOW LINE
"A" INLETS (I-2, I-3, I-5, I-10, I-11 & I-13)

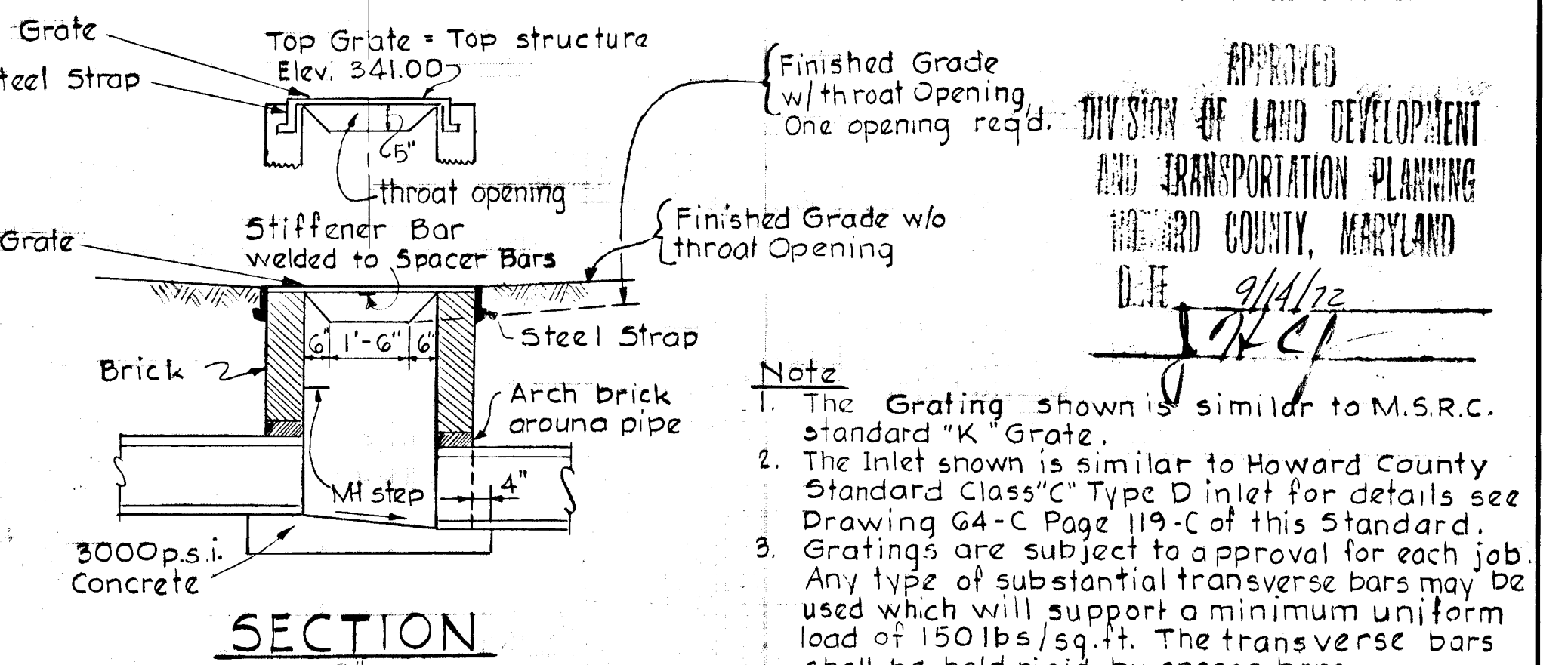
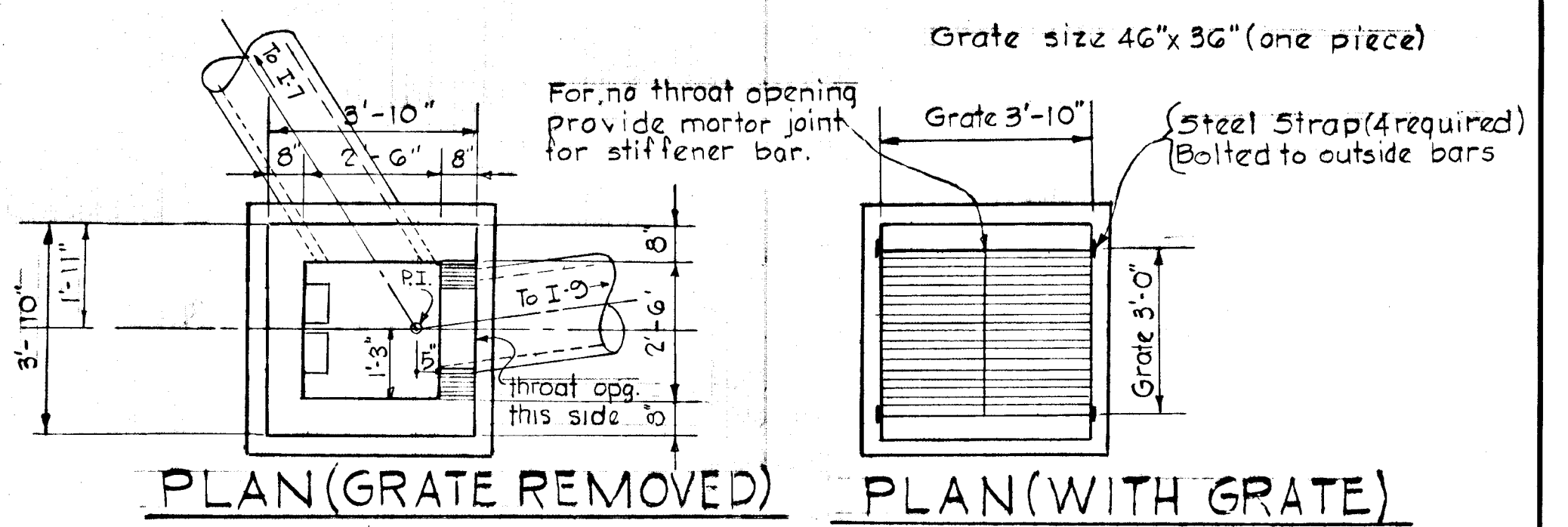
Note Inlet I-13 & I-11
 I-13, For transition to depressed curb & barrier curb, see detail for sumped "A" inlets. Downstream transition = 5'-0" upstream transition = 6'-2"
 I-11, For upstream transition, see detail for sumped "A" inlets.



SECTION ALONG FLOW LINE
SUMPED "A" INLETS (I-1, I-6, I-7, I-9, & I-12)
 Scale 3/8" = 1'-0"

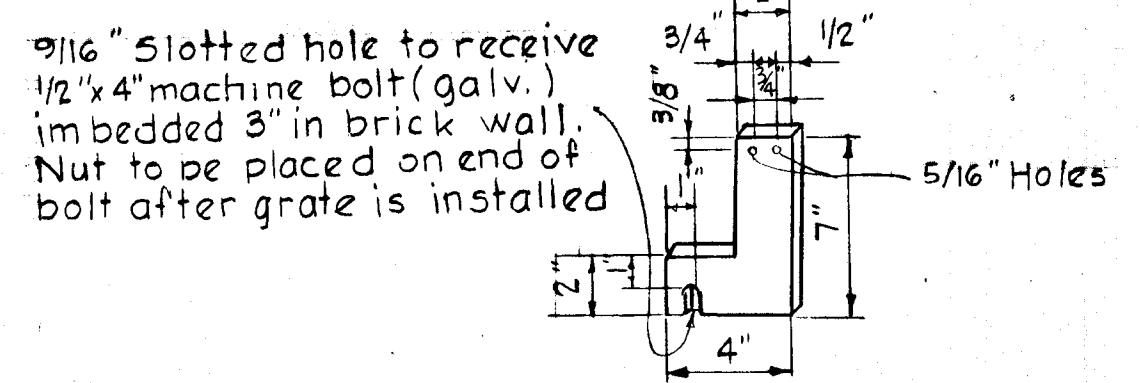


"A" INLET STANDARD CURB

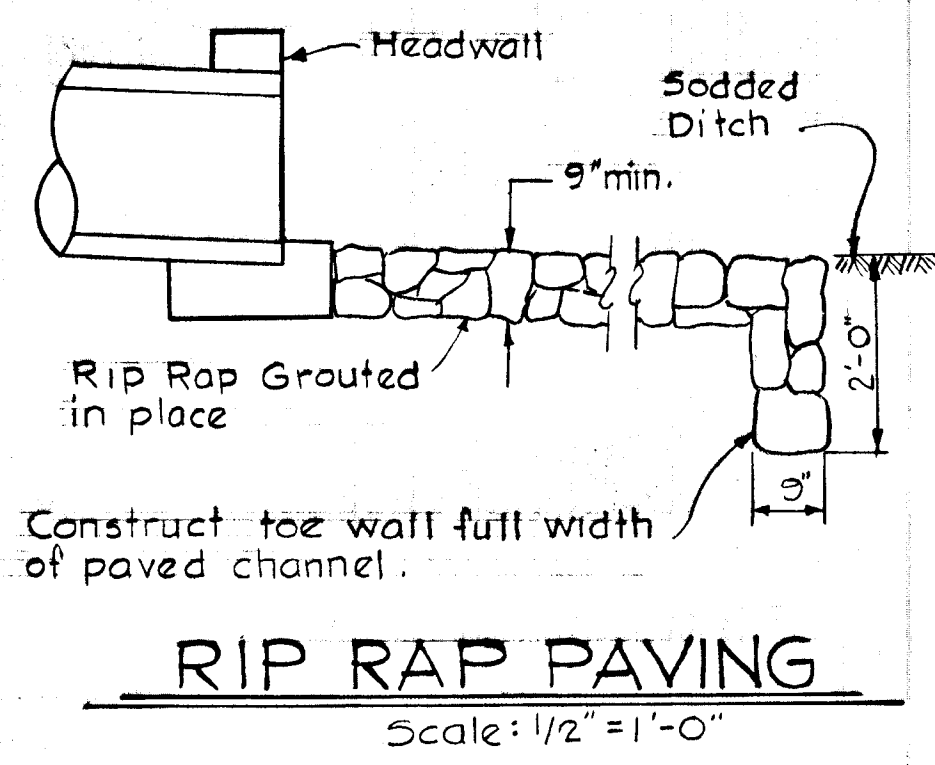


SECTION

Note
 1. The Grating shown is similar to M.S.R.C. standard "K" Grate.
 2. The inlet shown is similar to Howard County Standard Class "C" Type D inlet for details see Drawing G4-C Page 119-C of this Standard.
 3. Gratings are subject to approval for each job. Any type of substantial transverse bars may be used which will support a minimum uniform load of 150 lbs/sq.ft. The transverse bars shall be held rigid by spacer bars.
 4. All material to be hot dipped galvanized.



STRAP DETAIL
MODIFIED TYPE "D" CLASS "C" INLET, I-8
 Scale 3/8" = 1'-0"



RIP RAP PAVING
 Scale: 1/2" = 1'-0"

Rev. Date	Rev. No.	Revision Description
		COLUMBIA 6 th ELECTION DISTRICT HOWARD COUNTY, MARYLAND OWNER AND DEVELOPER HOWARD HOMES, INC.
		PROJECT AREA VILLAGE OF OWEN BROWN SECTION 1, AREA 1 RESUBDIVISION OF PARCEL 'X'
		PROJECT TITLE STORM DRAIN DETAILS
		SCALE: As Shown DATE: August 14, 1972
		WHITMAN, REQUARDT & ASSOCIATES ENGINEERS BALTIMORE, MARYLAND 21202
		<i>Kenneth A. McCord</i> KENNETH A. McCORD Registered Engineer No. 1974