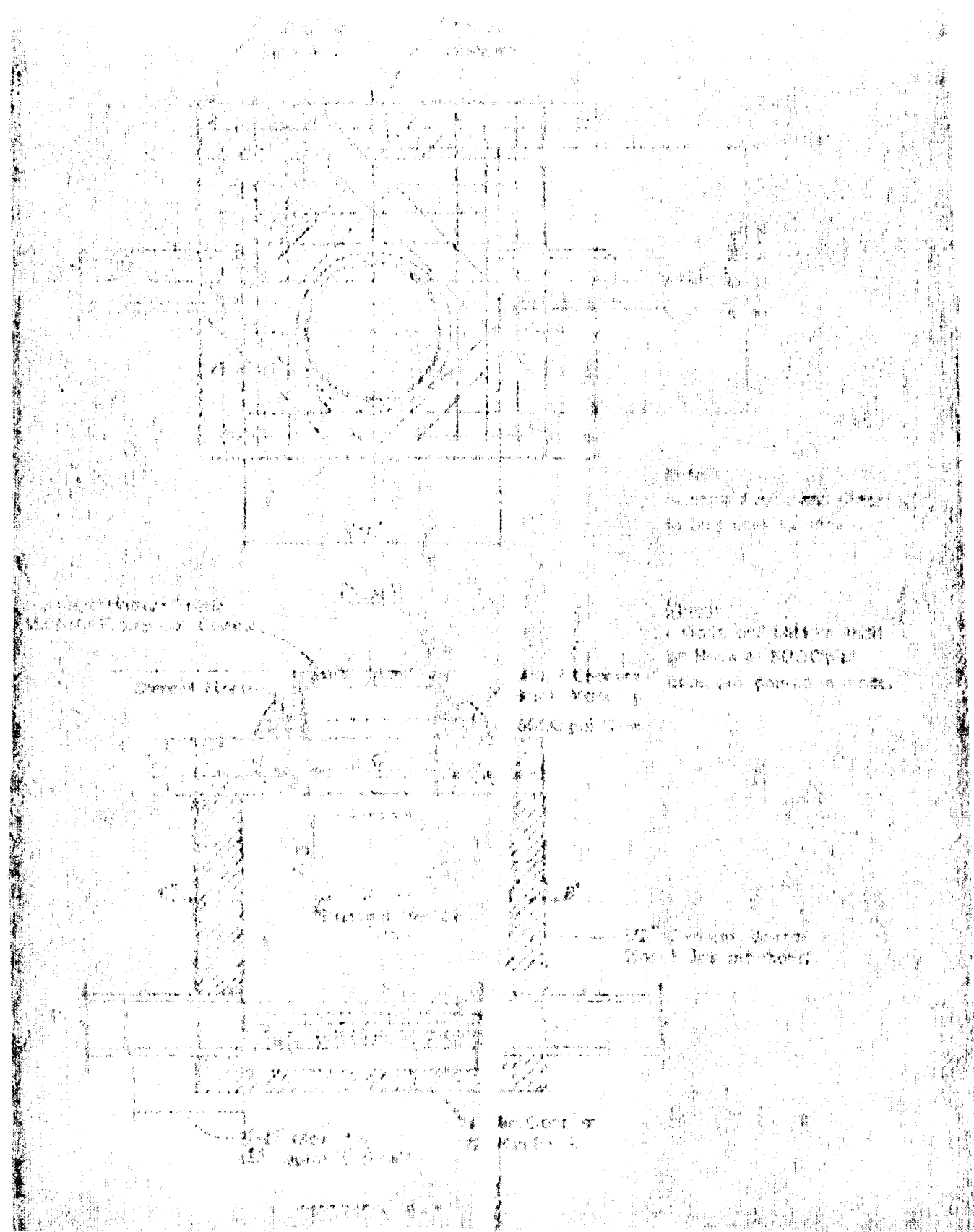
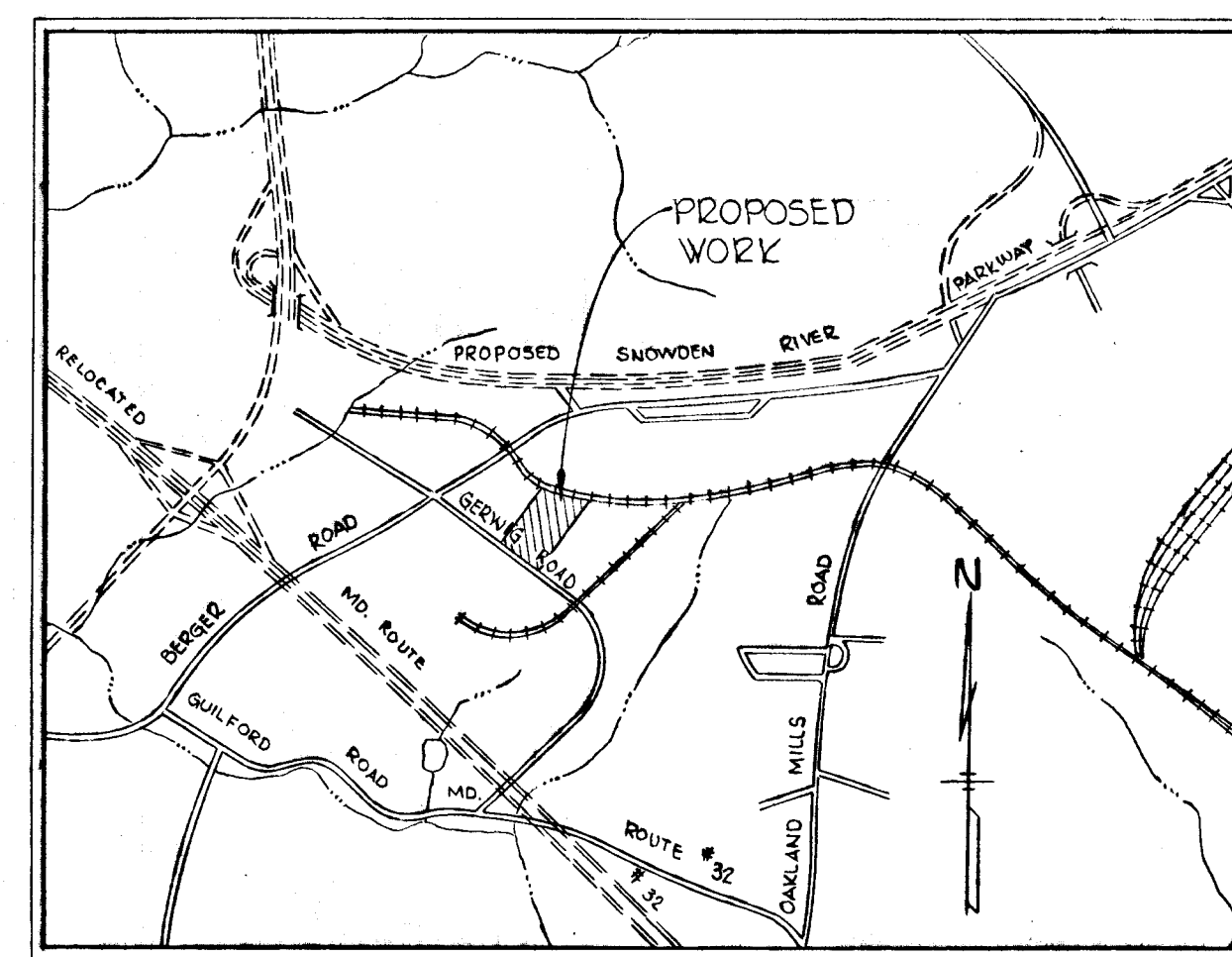


**PLAN**  
Scale: 1" = 50'

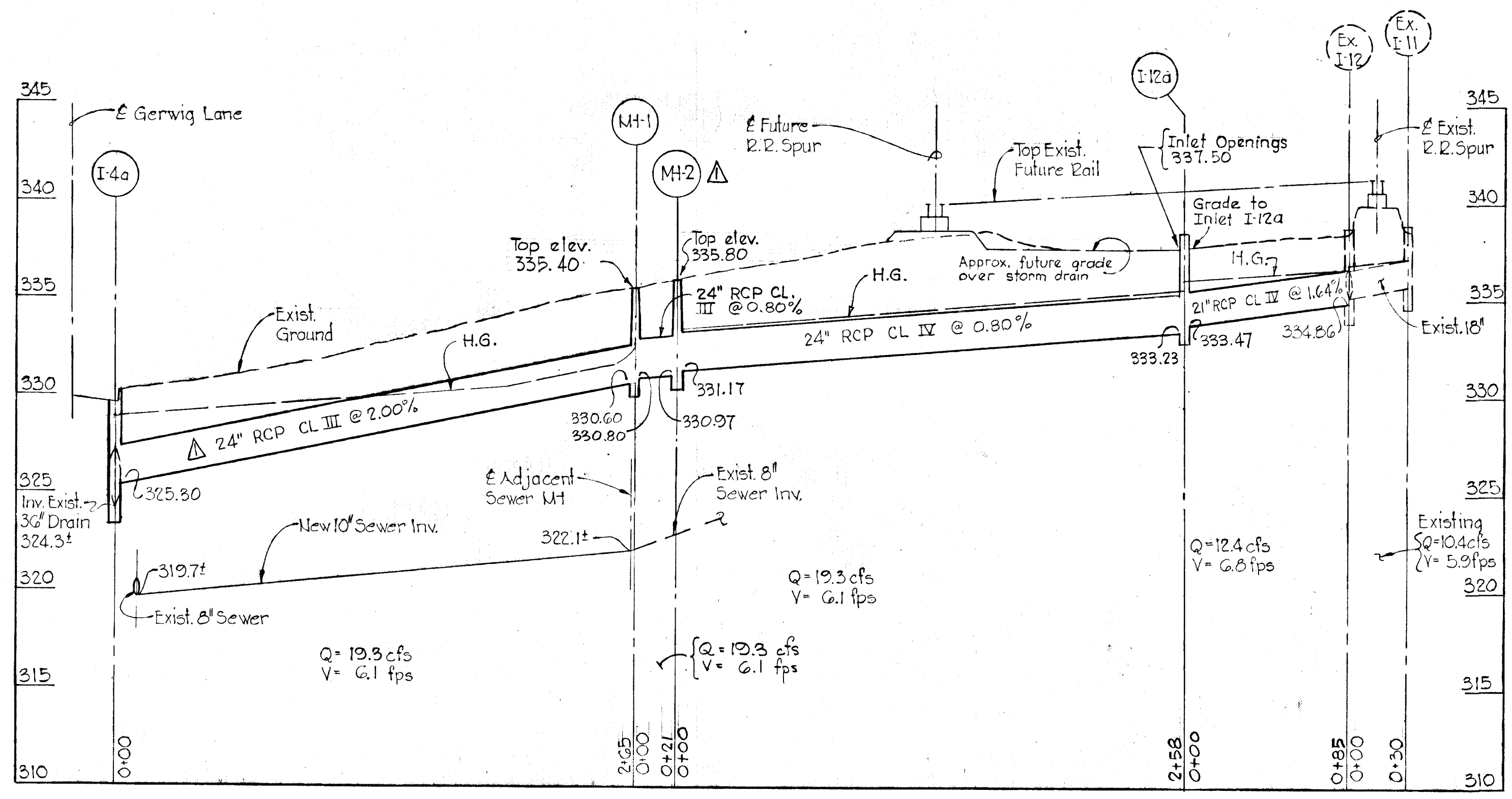


**TYPE "B" MANHOLE**  
No Scale



**VICINITY MAP**  
Scale: 1" = 1000'

ID#	Storm Drain Structure		Schedule	Location
	Type	Top El. / Inv. Out.		
I-4a	Std. Double 'S' Comb. Inlet	330.22 / 324.3	£	Inlet 2033' Right of £ Sta. G+01
MH-1	Type 'D' Manhole	335.40 / 332.60	See Detail This Sheet	See Plan & Profile
I-12a	Std. Class 'C' Inlet	338.23 / 333.23	See Detail This Sheet	See Plan & Profile
MH-2	Type 'B' Manhole	335.80 / 330.97	See Detail This Sheet	See Plan & Profile



**PROFILE**  
Scale: 1" = 50' Horiz.  
1" = 5' Vert.

4/18/72	△	Changed storm drain alignment MH-1 to I-1. Added MH-2, increased pipe size I-4a to MH-1.
Rev/Date	Rev/No	Revision Description

**COLUMBIA**  
3<sup>RD</sup> ELECTION DISTRICT  
HOWARD COUNTY, MARYLAND  
OWNER AND DEVELOPER  
HOWARD RESEARCH AND DEVELOPMENT CORP.

*E.G.U. SUBDIVISION - SECTION 2 - AREA 3*  
LOTS 18, 19, & G-1 ... A RESUBDIVISION OF LOTS 15, 16, & H-1 AND PARCEL G

**PROJECT TITLE**  
STORM DRAIN RELOCATION  
PLAN, PROFILE AND DETAILS

SCALE: As Shown      DATE: \_\_\_\_\_  
WHITMAN, REQUARDT & ASSOCIATES  
ENGINEERS  
BALTIMORE, MARYLAND 21202

DEPARTMENT OF PUBLIC WORKS  
*G. H. Weiland* 4/26/72  
CHIEF, BUREAU OF HIGHWAYS      DATE

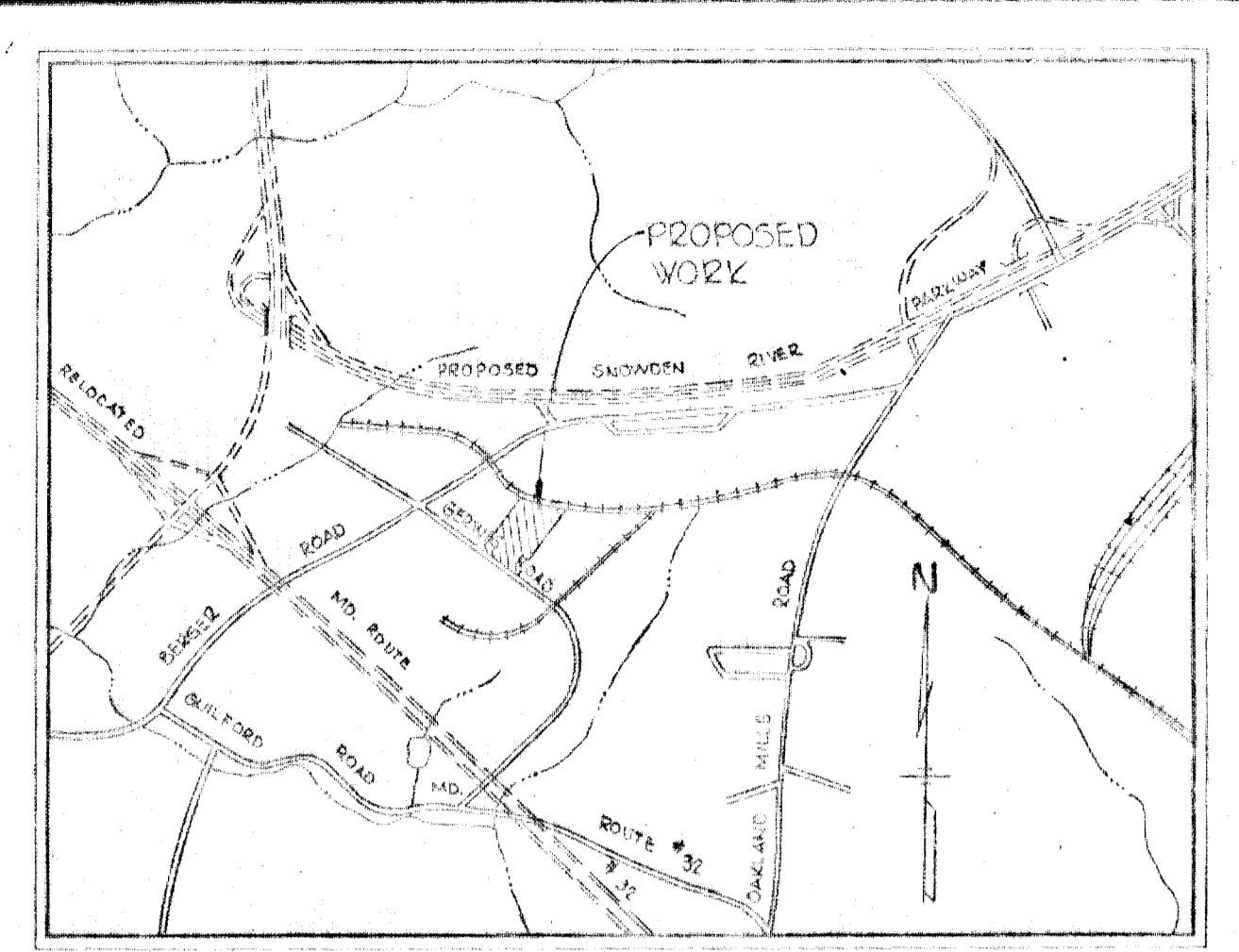
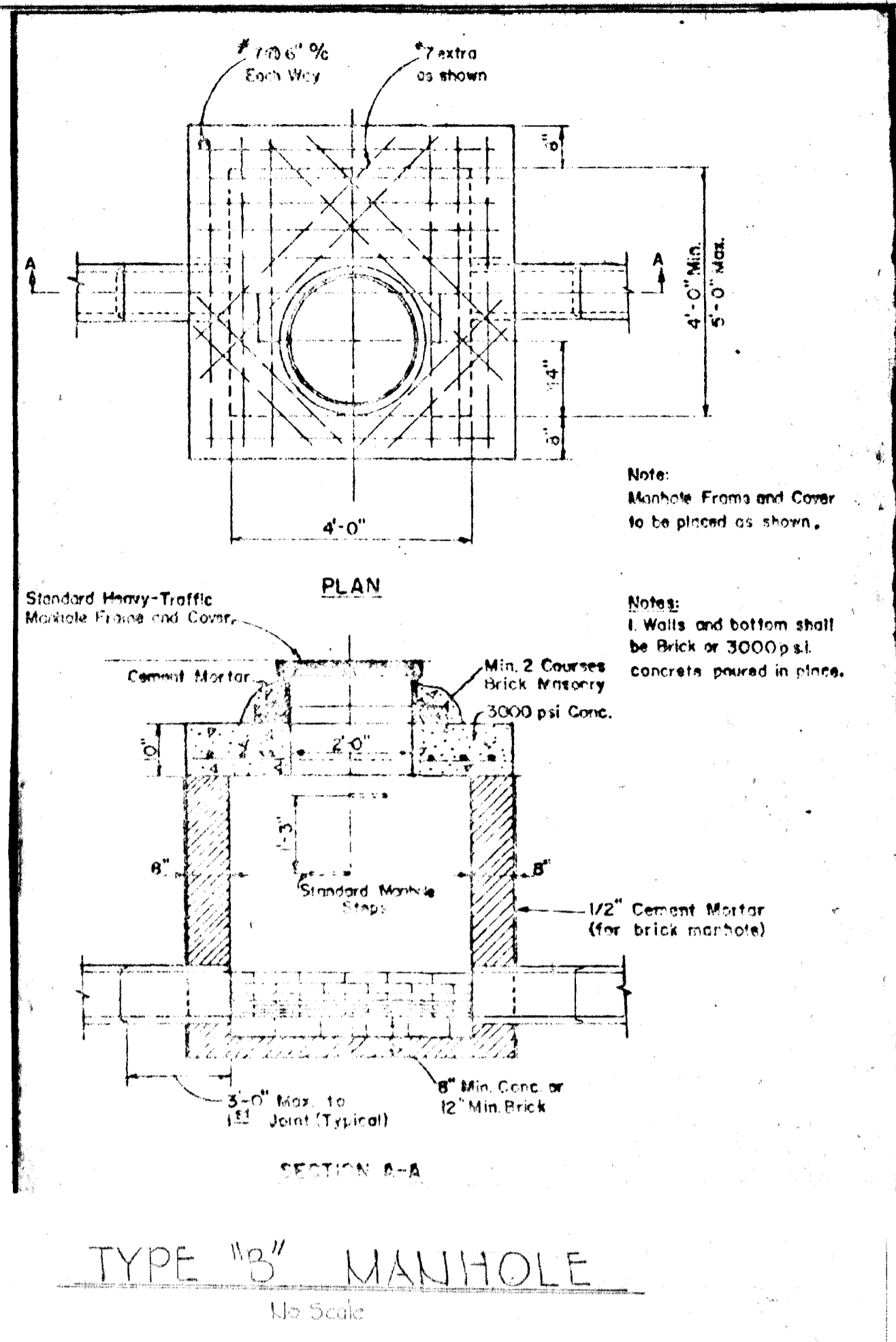
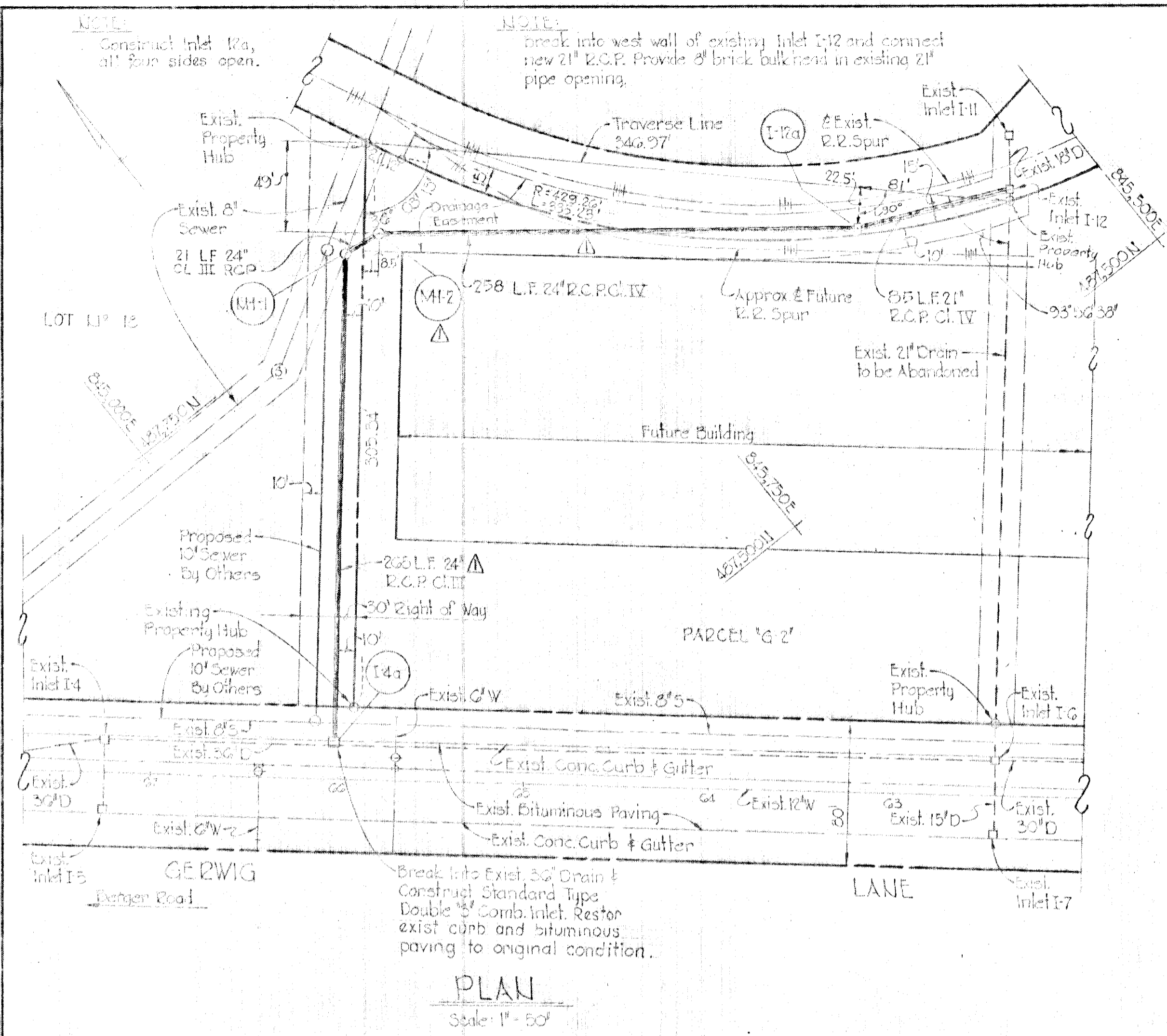
OFFICE OF PLANNING AND ZONING  
*J. H. Clouston* 4-25-72  
CHIEF ENGINEER, DIVISION OF LAND DEVELOPMENT AND TRANSPORTATION PLANNING      DATE

*Kenneth A. McCord*  
KENNETH A. McCORD  
Registered Engineer  
No. 1974

#43  
RP 320

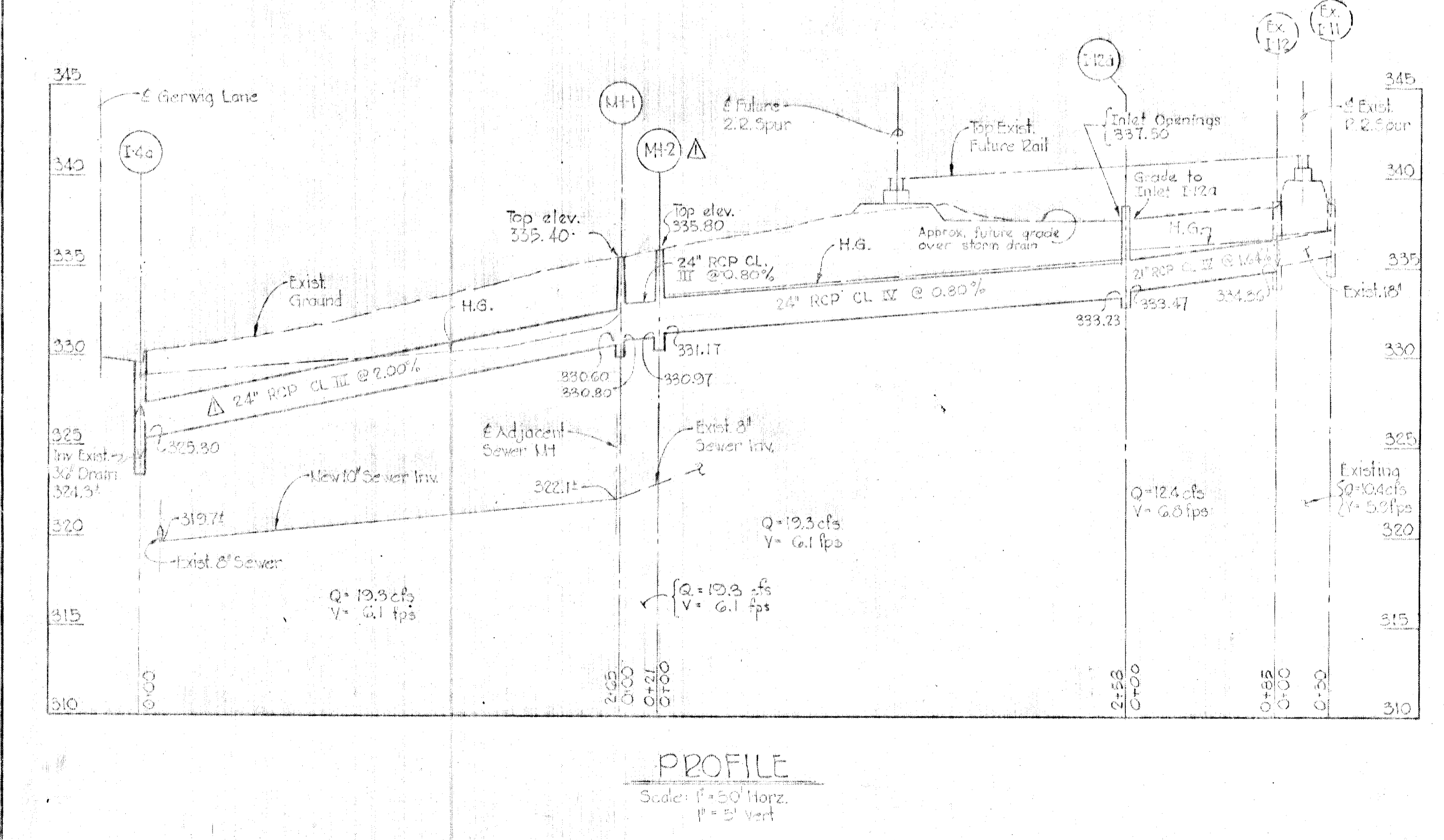
W.C. G597-2





VICINITY MAP  
Scale: 1" = 1200'

No.	Storm Drain Structure Schedule	Location
I-4a	Std. Double 3" Comb. Inlet	330.22, 330.3
MH-1	Type 'B' Manhole	335.40, 330.0
I-12a	Std. Class 'C' Inlet	333.33, 333.23
MH-2	Type 'B' Manhole	335.60, 330.07



4/26/72	Δ	Changed storm drain diameter 30" to 24" and added MH-2, increased pipe size 14a to 18" I
Rev. Date	Rev. No.	Revision Description
<b>COLUMBIA</b> 6th ELECTION DISTRICT HOWARD COUNTY, MARYLAND OWNER AND DEVELOPER HOWARD RESEARCH AND DEVELOPMENT CORP. E.G.U. SUBDIVISION - SECTION 2 - AREA 3 LOTS 18, 19, & 21 - A RECONFIGURATION OF LOTS 15, 16, & 17-1 AND PARCEL G PROJECT TITLE STORM DRAIN RELOCATION PLAN, PROFILE AND DETAILS SCALE As Shown DATE: WHITMAN, REARDY & ASSOCIATES ENGINEERS BALTIMORE, MARYLAND 21202 DEPARTMENT OF PUBLIC WORKS G. M. Wehrend 4/26/72 CHIEF, BUREAU OF HIGHWAYS DATE OFFICE OF PLANNING AND ZONING Kenneth A. McCord 4-25-72 CHIEF ENGINEER, DIVISION OF LAND DEVELOPMENT AND TRANSPORTATION PLANNING DATE KENNETH A. McCORD Registered Engineer No. 1974		

DEPARTMENT OF PUBLIC WORKS  
 G. M. Wehrend 4/26/72  
 CHIEF, BUREAU OF HIGHWAYS DATE  
 OFFICE OF PLANNING AND ZONING  
 Kenneth A. McCord 4-25-72  
 CHIEF ENGINEER, DIVISION OF LAND DEVELOPMENT AND TRANSPORTATION PLANNING DATE