

Rev. Date	Rev. No.	Revision Description

COLUMBIA
 5TH ELECTION DISTRICT
 HOWARD COUNTY, MARYLAND
 OWNER AND DEVELOPER
 COLUMBIA OAKS CORP.

PROJECT AREA
 TOWN CENTER, SECTION 7, AREA 7

PROJECT TITLE
 WOODFORD

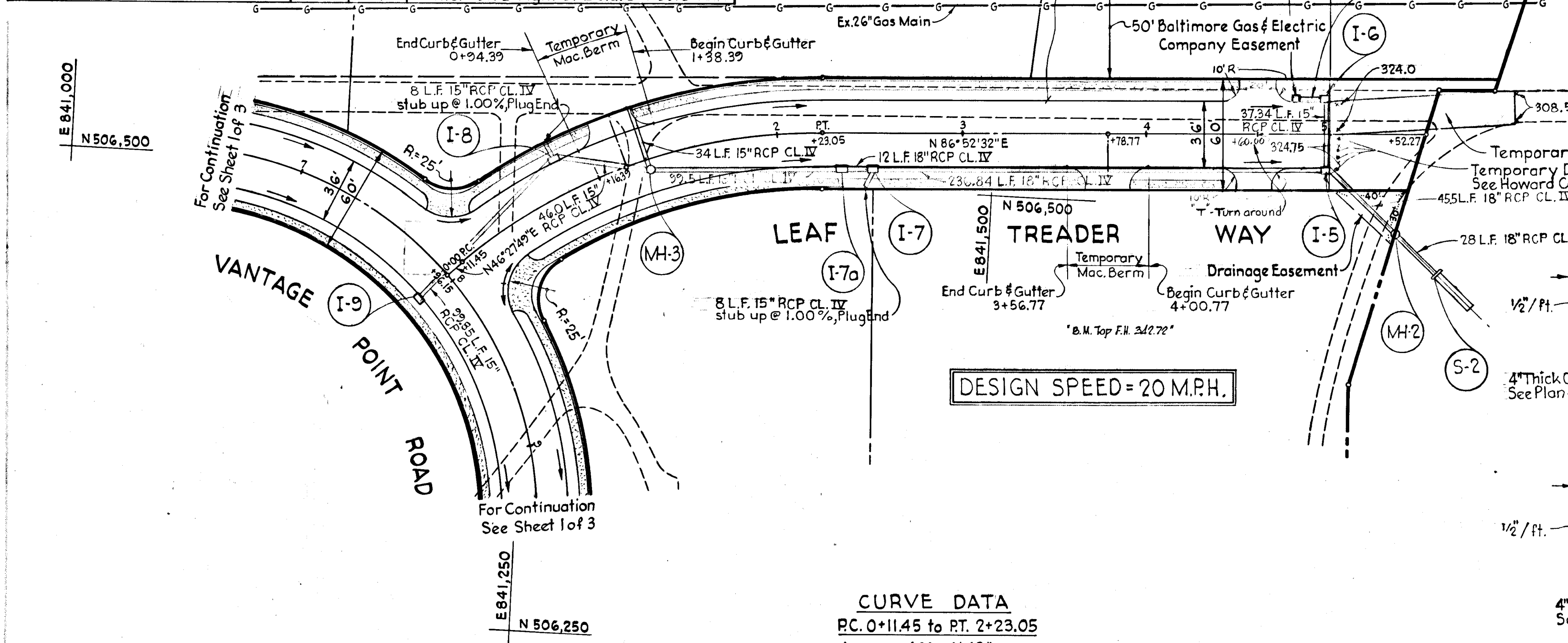
SCALE: AS SHOWN DATE: DECEMBER 1, 1971

WHITMAN, REQUARDT & ASSOCIATES
 ENGINEERS
 BALTIMORE, MARYLAND, 21202

Kenneth A. McCord
 KENNETH A. MCCORD
 Registered Engineer
 No. 1974

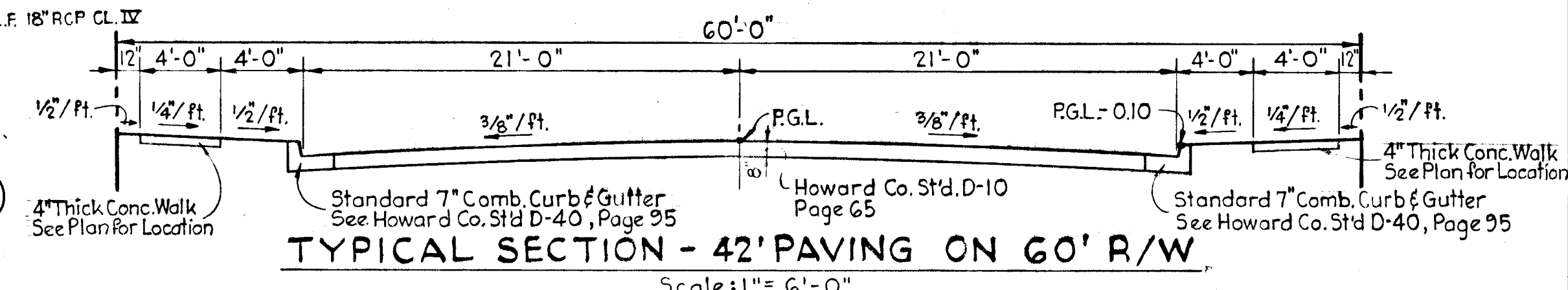
N ^o	Type	Top Elev.	Inv. Out	Location
I-5	A-5, width = 2'-6"	323.94	316.27	± Inlet 19.92' right of & sta. 4+97.50
I-6	A-5, width = 2'-6"	323.94	320.37	± Inlet 19.92' left of & sta. 4+97.50
I-7	A-5, width = 2'-6"	343.44	337.02	± Inlet 19.92' right of & sta. 2+53.16
I-8	A-5, width = 2'-6"	353.64	348.94	± Inlet 19.92' left of & sta. 0+82
I-9	A-5, width = 2'-6"	355.92	350.47	± Inlet 19.92' right of & sta. 7+96.15
MH-2	Modified Drop Manhole	313.36	307.11	± Manhole 54.25' right of & sta. 5+35
MH-3	Standard Manhole	351.71	346.07	± Manhole 6' right of & sta. 1+27.64
S-2	Type "C" Endwall	308.40	306.4	Face of Endwall 76.7' right of & sta. 5+57
I-6a	A-5, width = 2'-6"	323.94	321.05	± Inlet 19.92' left of & sta. 4+80.50
I-7a	A-5, width = 2'-6"	344.25	339.62	± Inlet 19.92' right of & sta. 2+36.16

DEPARTMENT OF PUBLIC WORKS
 B. N. Wehland 4/10/72
 CHIEF BUREAU OF HIGHWAYS DATE
 OFFICE OF PLANNING AND ZONING
 J. J. Clowry 3-22-72
 CHIEF DIVISION OF LAND DEVELOPMENT & TRANSPORTATION PLANNING DATE

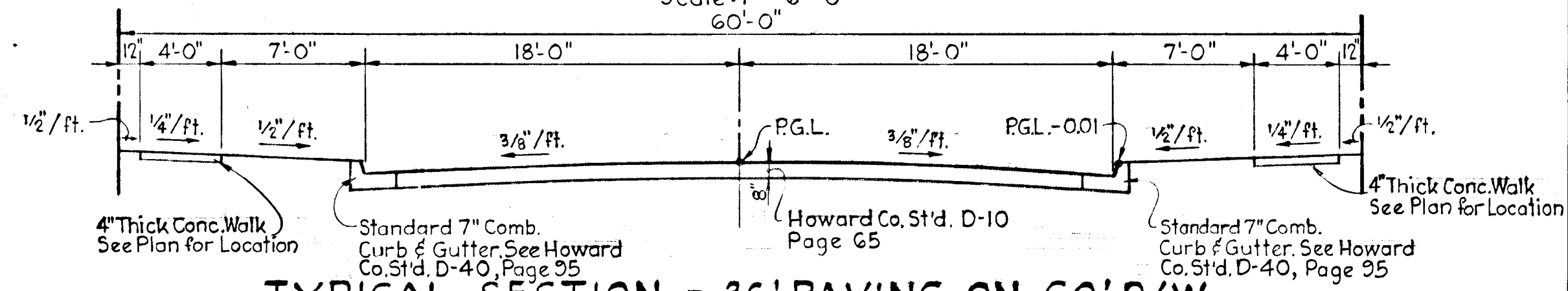


CURVE DATA
 P.C. 0+11.45 to P.T. 2+23.05
 Δ = 40° 24' 43"
 R = 300.00'
 Arc = 211.60'
 Tan = 110.41'
 Ch. = 207.24'
 Brg. = N66°40'10"E

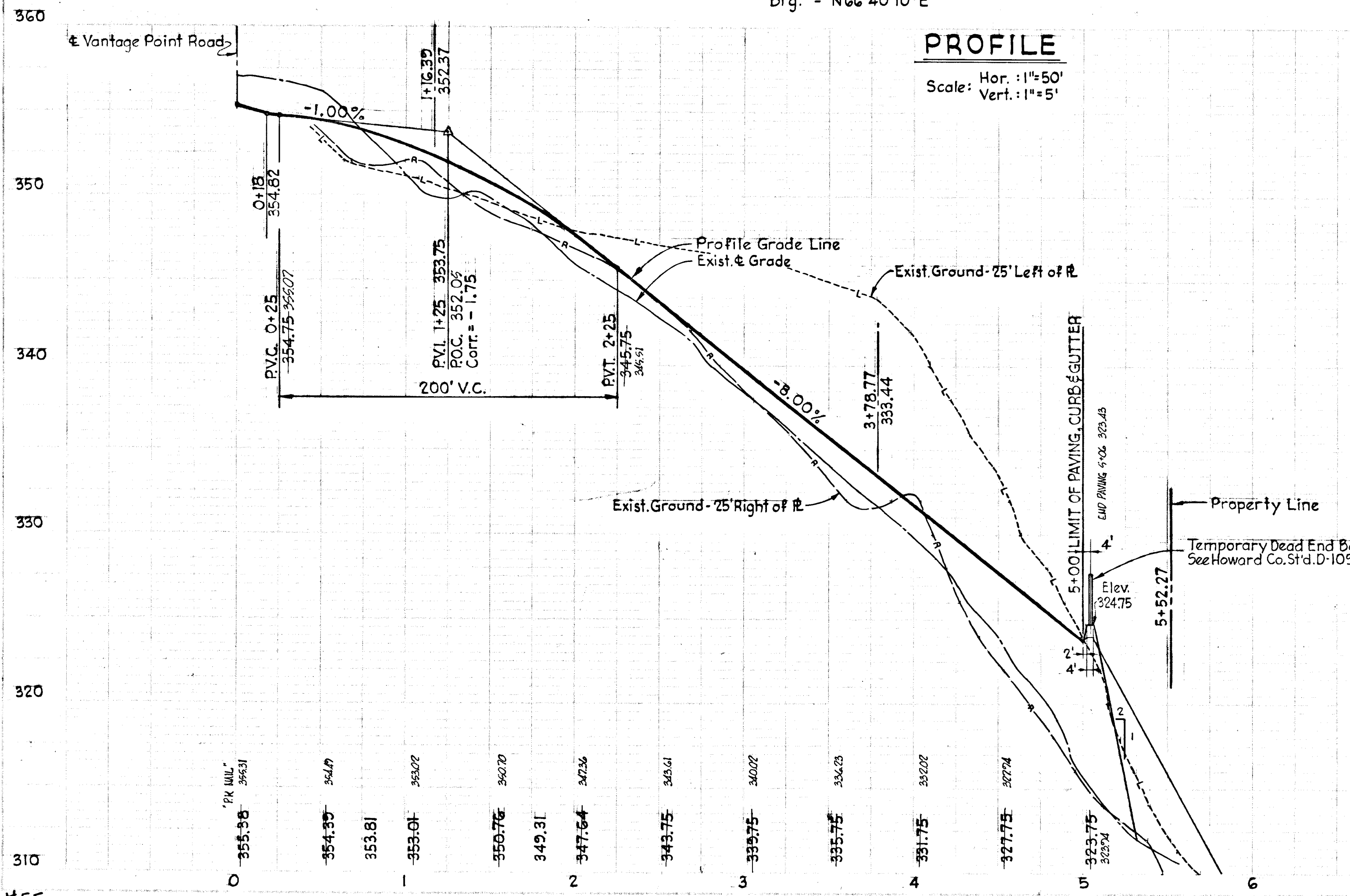
PLAN
 Scale: 1"=50'



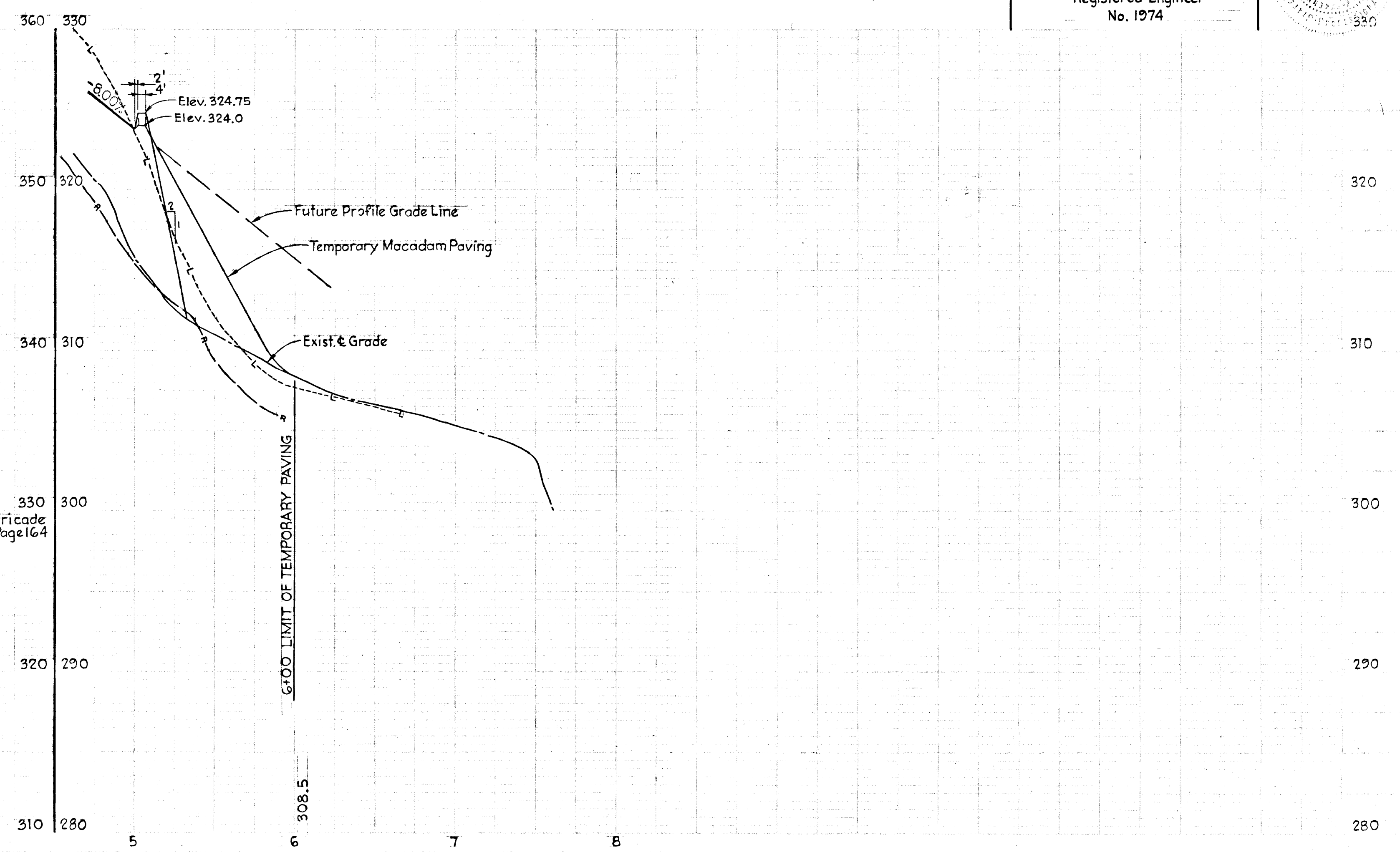
TYPICAL SECTION - 42' PAVING ON 60' R/W
 Scale: 1"=6'-0"



TYPICAL SECTION - 36' PAVING ON 60' R/W
 Scale: 1"=6'-0"



PROFILE
 Scale: Hor. : 1"=50'
 Vert. : 1"=5'



Rev. Date	Rev. No.	Revision Description

COLUMBIA
 5TH ELECTION DISTRICT
 HOWARD COUNTY, MARYLAND
 OWNER AND DEVELOPER
 COLUMBIA OAKS CORP.

PROJECT AREA
TOWN CENTER, SECTION 7, AREA 7

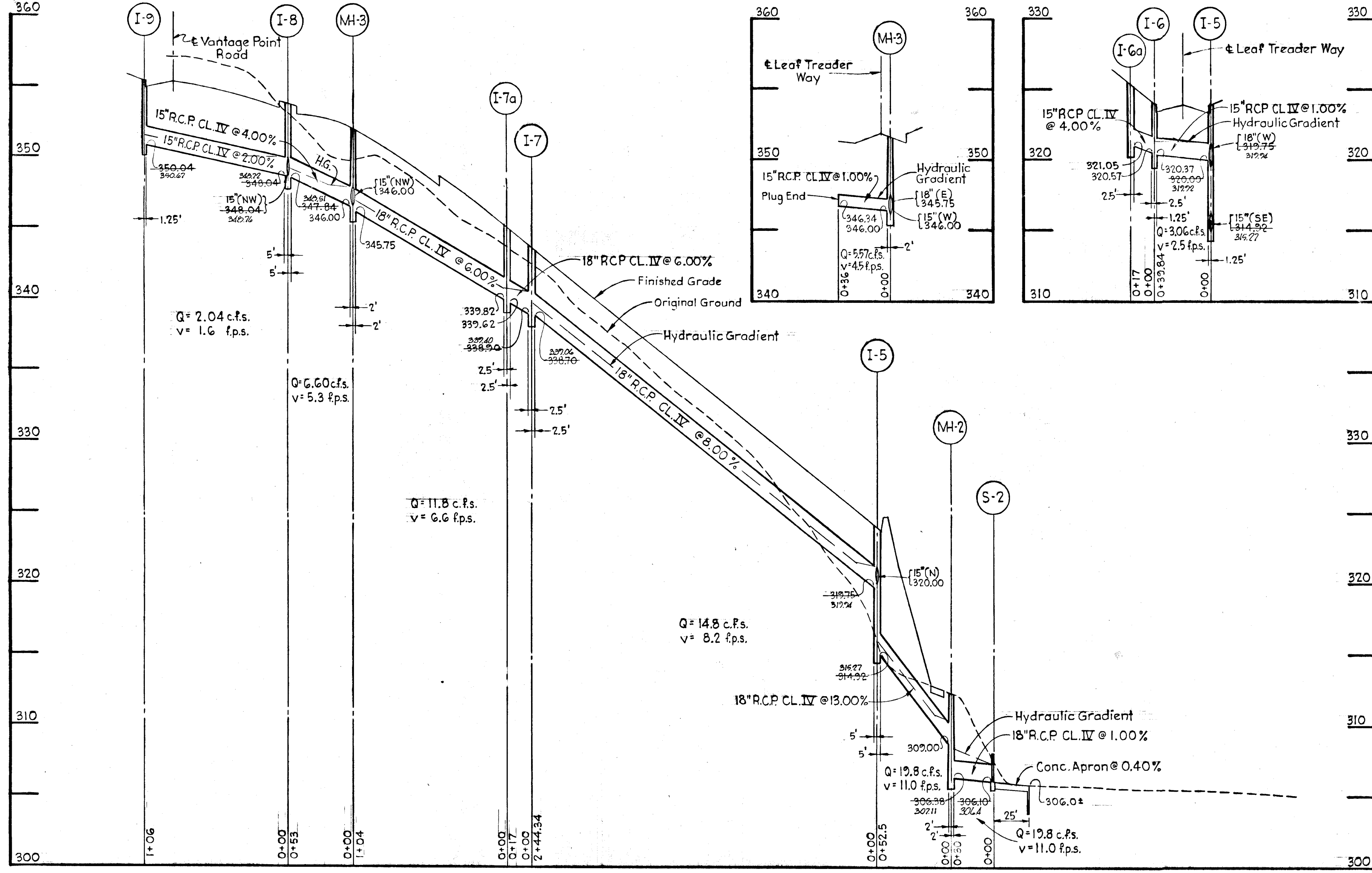
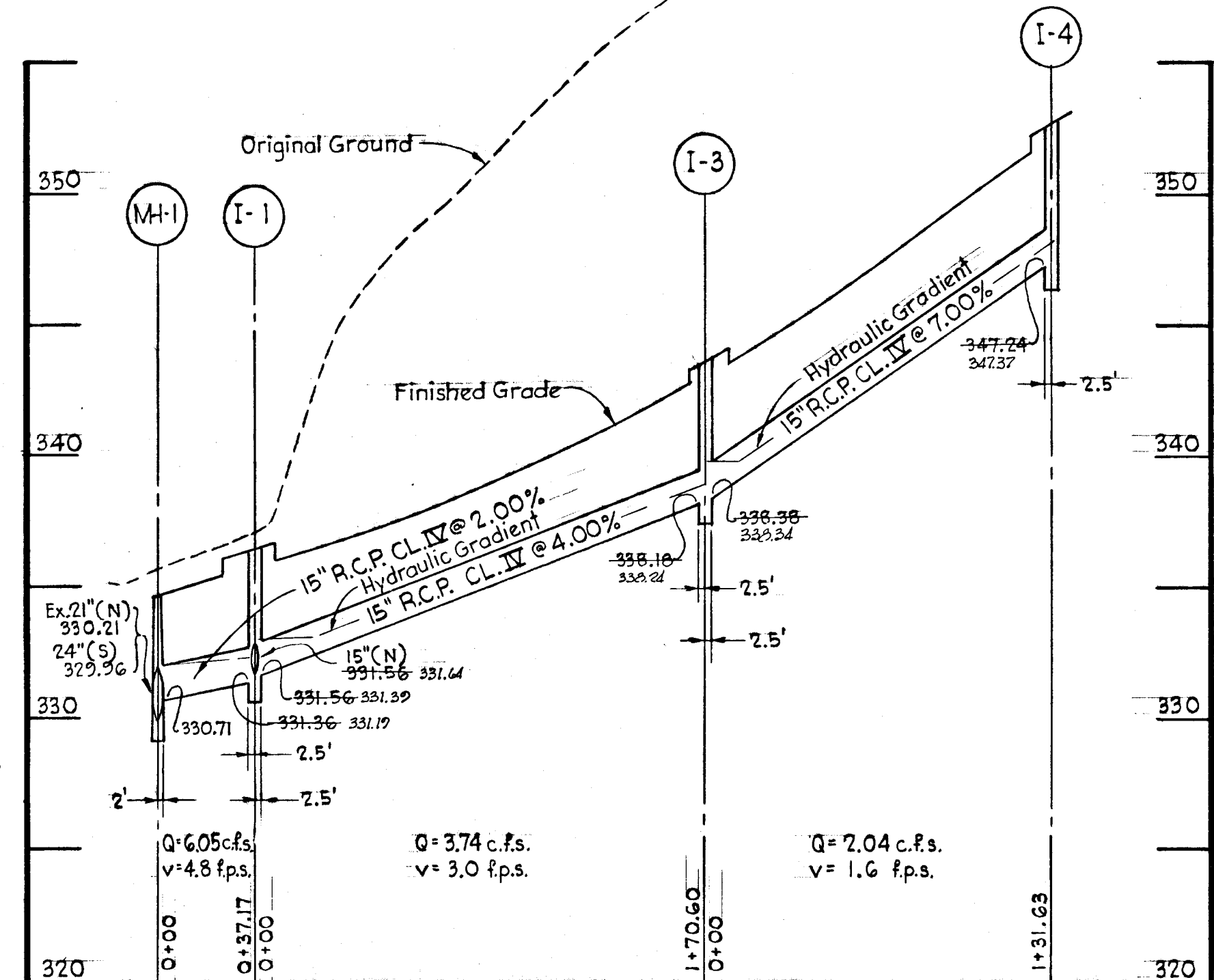
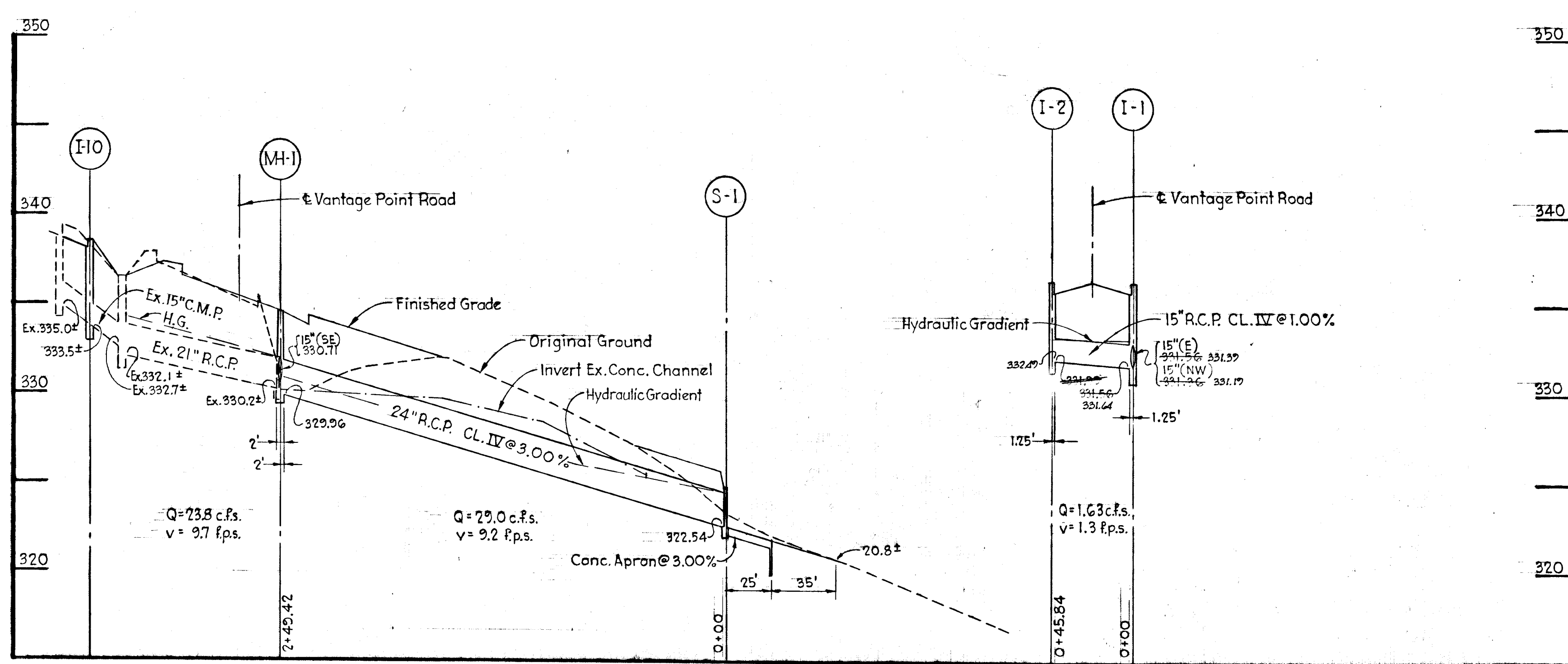
PROJECT TITLE
WOODFORD

SCALE: AS SHOWN DATE: DECEMBER 1, 1971

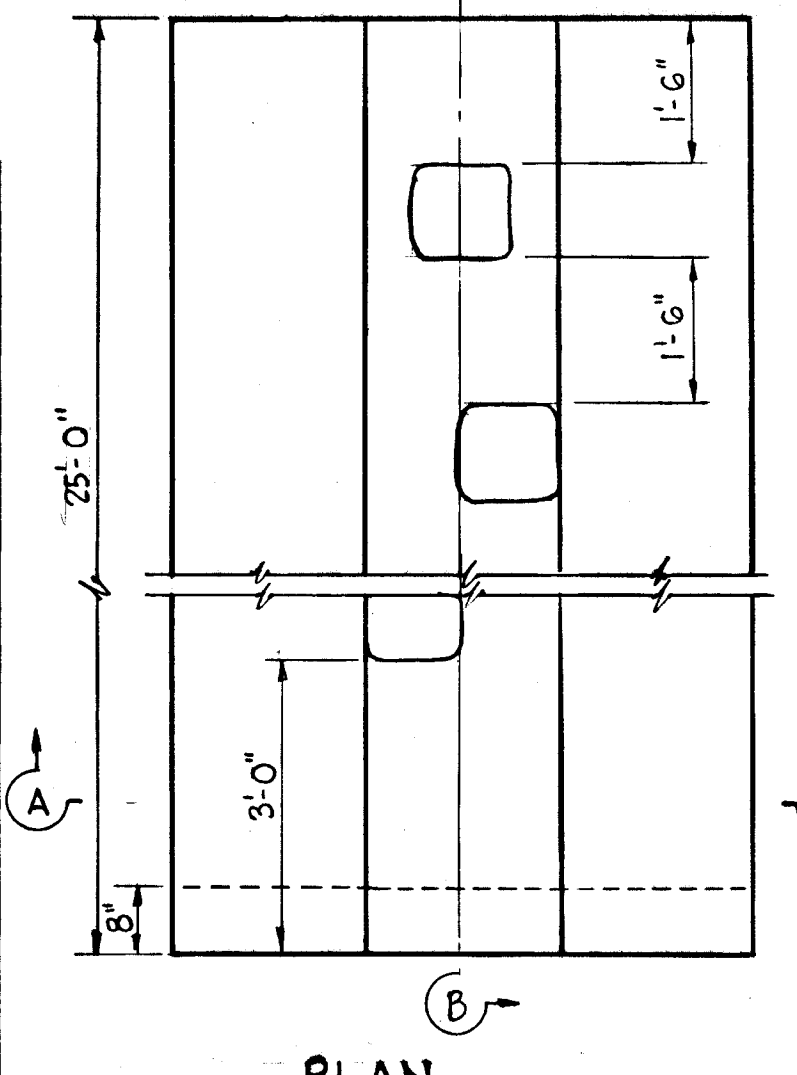
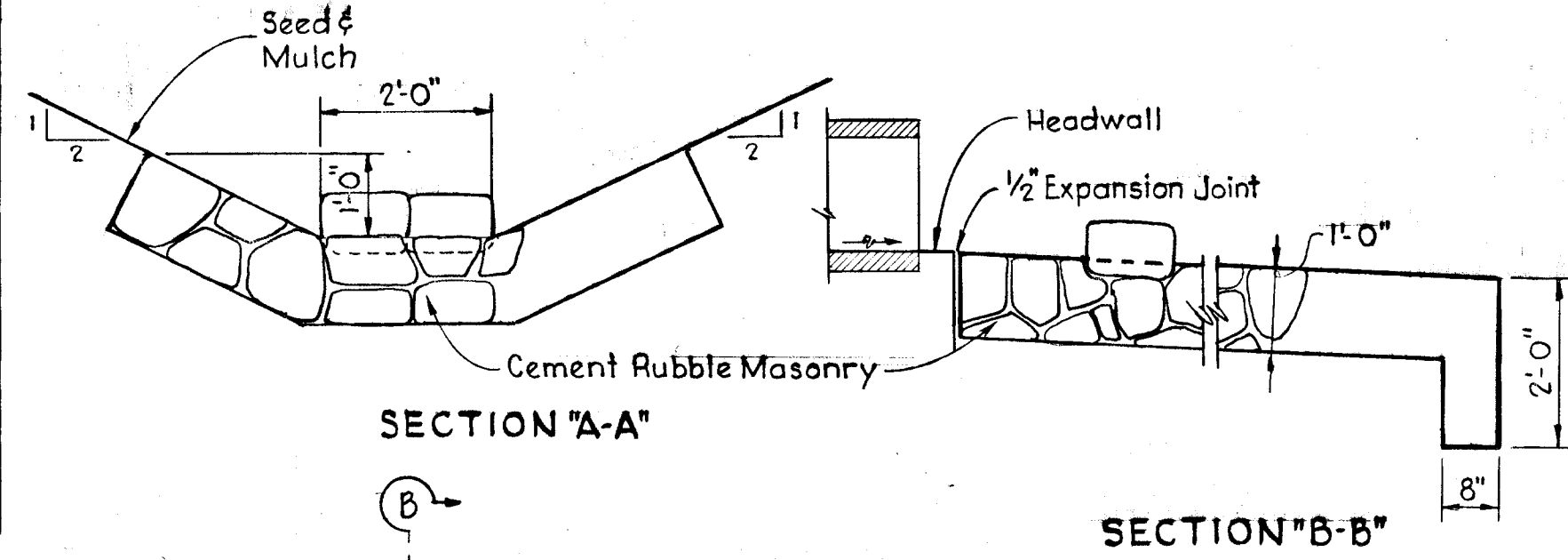
WHITMAN, REQUARDT & ASSOCIATES
 ENGINEERS
 BALTIMORE, MARYLAND, 21202

Kenneth A. McCord
 KENNETH A. MCCORD
 Registered Engineer
 No. 1974

#55
 249 CRP249



PROFILE
Scale: Hor. : 1" = 50'
Ver. : 1" = 5'



CONCRETE APRON DETAILS
Scale: 1/2" = 1'-0"

- NOTES:
1. Stones shall be 2 man stone. Normal size shall be 12"x12"x8"
 2. First stone shall be placed 1'-6" minimum from end of headwall @ ± of apron.
 3. No stones are to be located within 3' from end of apron.
 4. Placement of stones are intended to reduce discharge velocities to 5 feet per second.

Rev. Date	Rev. No.	Revision Description
COLUMBIA		
5TH ELECTION DISTRICT HOWARD COUNTY, MARYLAND		
OWNER AND DEVELOPER COLUMBIA OAKS CORP.		
PROJECT AREA		
TOWN CENTER, SECTION 7, AREA 7		
PROJECT TITLE		
WOODFORD		
SCALE: AS SHOWN		DATE: DECEMBER 1, 1971
WHITMAN, REQUARDT & ASSOCIATES ENGINEERS		
BALTIMORE, MARYLAND, 21202		
DEPARTMENT OF PUBLIC WORKS P. M. McLeod CHIEF BUREAU OF HIGHWAYS		DATE 4/10/72
OFFICE OF PLANNING AND ZONING J. H. Clowry CHIEF DIVISION OF LAND DEVELOPMENT & TRANSPORTATION PLANNING		DATE 3-22-72
KENNETH A. McCORD Registered Engineer No. 1974		

24G
CRP 24G

7-72-43