

DATE
BY
SY
NO.

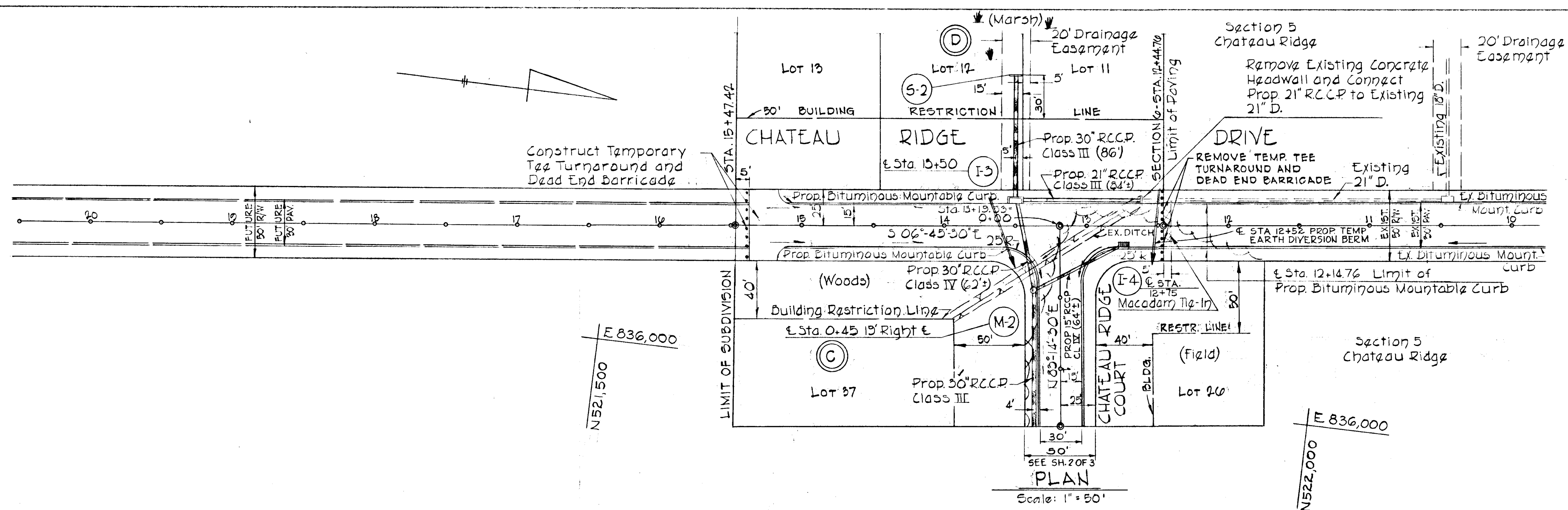
PLAN

DESIGNED BY: W. Korpman
DRAWN BY: L. Bodnar
CHECKED BY: R. Carter

DATE
BY
SY
NO.

PROFILE

DESIGNED BY: W. Korpman
DRAWN BY: L. Bodnar
CHECKED BY: R. Carter



DESIGNED BY: W. Korpman
DRAWN BY: L. Bodnar
CHECKED BY: R. Carter

DEVELOPER
CHATEAU BUILDERS INC.
3318 LEE COURT
BALTIMORE, MARYLAND

11/26/71
DATE

Walter Ghaubert
REG. NO. 4575

PURDUM & JESCHKE
ENGINEERS
LAND SURVEYORS
3097 PARK AVE.
ELLCOTT CITY, MARYLAND

DEPARTMENT OF PUBLIC WORKS

D. R. Mehlend
CHIEF, BUREAU OF HIGHWAYS
2/18/72
DATE

J. H. Clouston
CHIEF ENGINEER, DIVISION OF LAND DEVELOPMENT
AND TRANSPORTATION PLANNING
2/1/72
DATE

PLAN & PROFILE: CHATEAU RIDGE DRIVE

SECTION 6
CHATEAU RIDGE

2ND ELECTION DISTRICT
November 6, 1971

HOWARD COUNTY, MD.
SCALE: AS SHOWN

SHEET 1 OF 3

PROFILE CHATEAU RIDGE DRIVE

SCALE: HORIZ 1"=50'
VERT 1"=5'

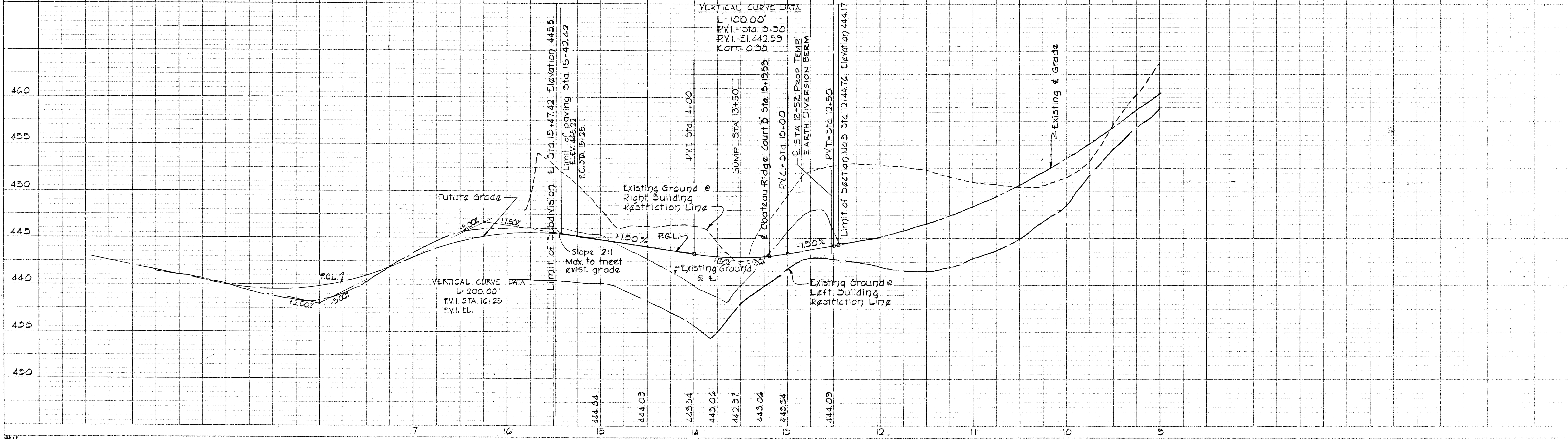


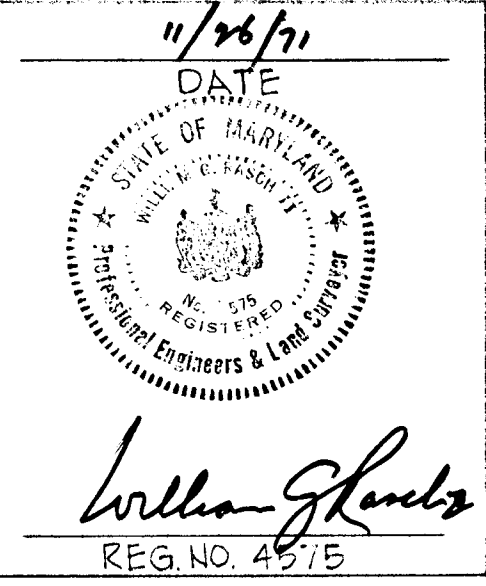
PLATE 1 PLAN PROFILE (S. 1, 2, 3, 4, 5, 6, 7, 8, 9, 10, 11, 12, 13, 14, 15, 16, 17, 18, 19, 20, 21, 22, 23, 24, 25, 26, 27, 28, 29, 30, 31, 32, 33, 34, 35, 36, 37, 38, 39, 40, 41, 42, 43, 44, 45, 46, 47, 48, 49, 50, 51, 52, 53, 54, 55, 56, 57, 58, 59, 60, 61, 62, 63, 64, 65, 66, 67, 68, 69, 70, 71, 72, 73, 74, 75, 76, 77, 78, 79, 80, 81, 82, 83, 84, 85, 86, 87, 88, 89, 90, 91, 92, 93, 94, 95, 96, 97, 98, 99, 100)

RP 136

F-72-42

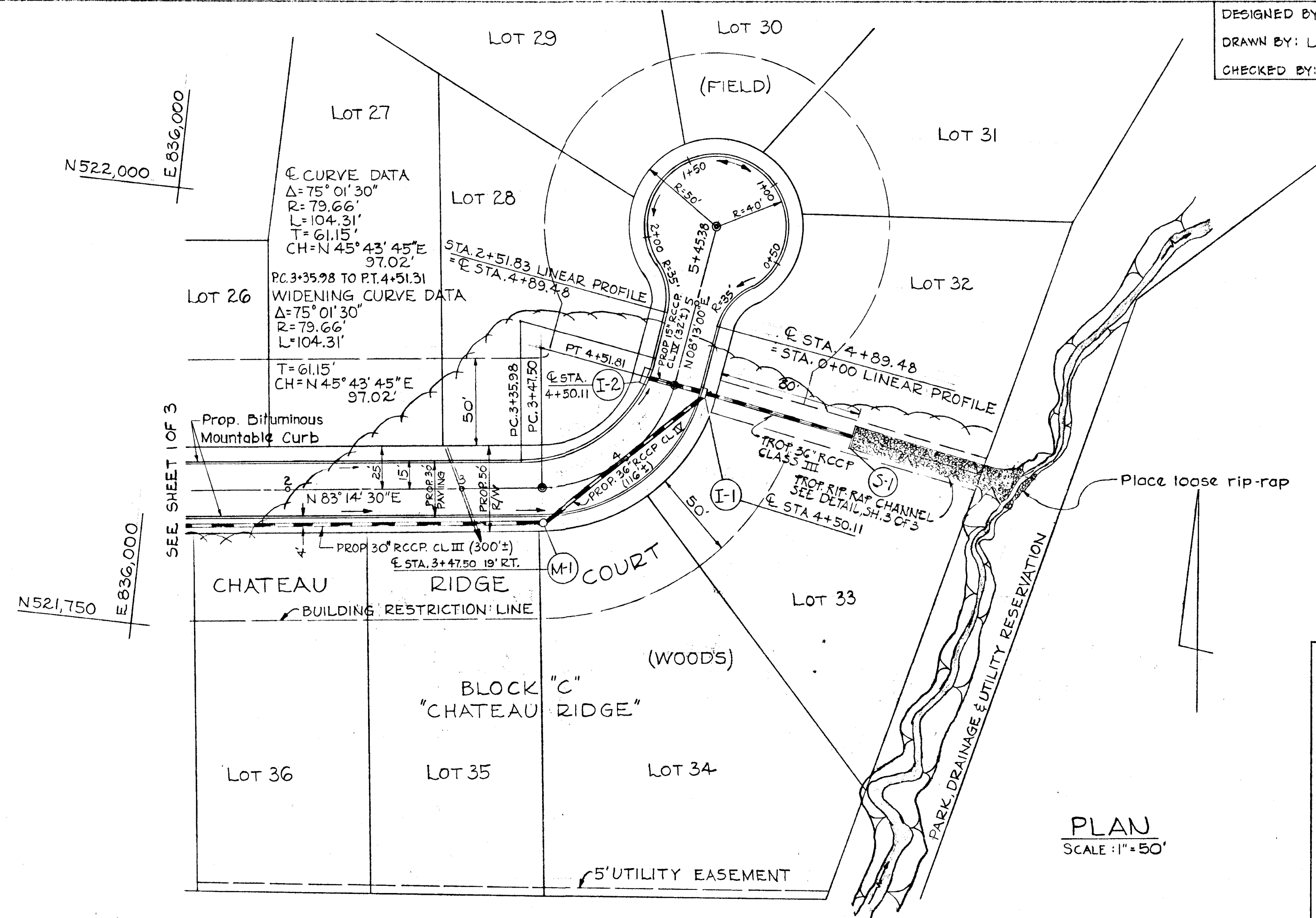
DESIGNED BY: W. KOPPMAN
 DRAWN BY: L. BODNAR
 CHECKED BY: R. CARTER

DEVELOPER
 CHATEAU BUILDERS INC.
 3318 LEE COURT
 BALTIMORE, MARYLAND



PURDUM & JESCHKE
 ENGINEERS
 LAND SURVEYORS
 3097 PARK AVE.
 ELLICOTT CITY, MARYLAND

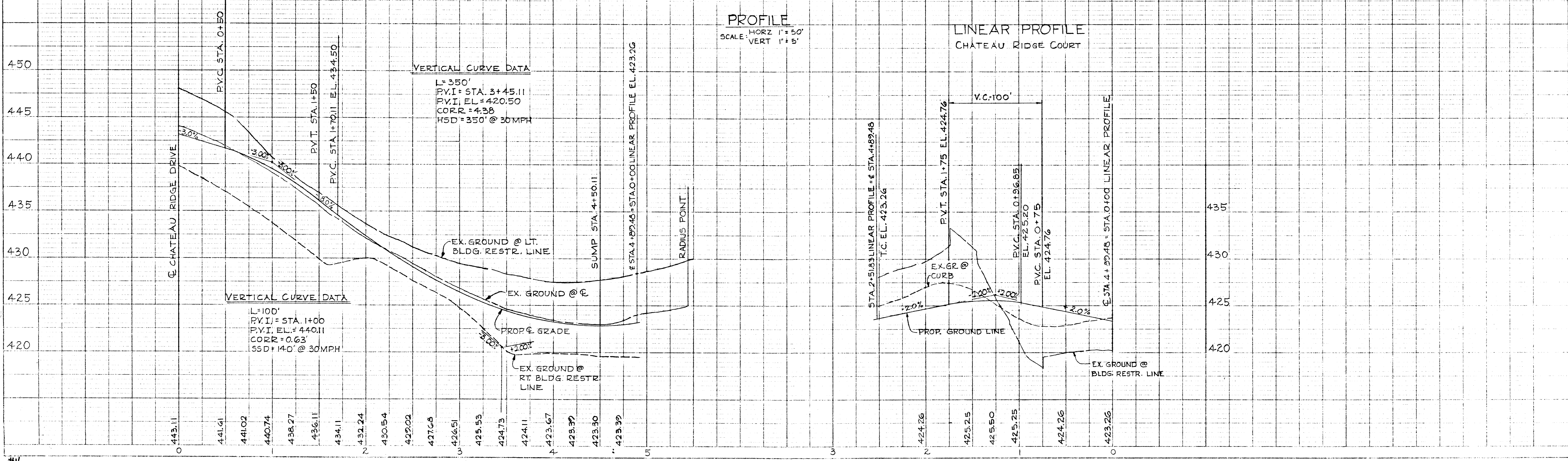
DEPARTMENT OF PUBLIC WORKS
 B. H. McKeane 2/8/72
 CHIEF, BUREAU OF HIGHWAYS
 J. H. Clouse 2/7/72
 CHIEF ENGINEER, DIVISION OF LAND DEVELOPMENT AND TRANSPORTATION PLANNING



PLAN & PROFILE: CHATEAU RIDGE COURT
 SECTION 6
 CHATEAU RIDGE
 2ND ELECTION DISTRICT
 NOVEMBER 6, 1971
 HOWARD COUNTY, MD.
 SCALE: AS SHOWN
 SHEET 2 OF 3

STRUCTURE SCHEDULE					
STRUCT. NO.	TYPE	INV. IN	INV. OUT	TOP ELEV.	REMARKS
I-1	A-5' INLET	418.63	416.88	423.37	DRWG D-64-A PAGE 119-A
I-2	A-5' INLET	—	419.12	423.37	DRWG D-64-A PAGE 119-A
I-3	A-10' INLET	438.27	437.28	443.04	DRWG D-64-A PAGE 119-A
I-4	DEPR. S' COMB. INLET	—	439.80	443.78	DRWG D-99 PAGE 154
MH-1	STD. MANHOLE	419.08	418.58	425.05	DRWG D-103 PAGE 158
MH-2	STD. MANHOLE	436.40	434.90	442.00	DRWG D-103 PAGE 158
S-1	'C' HEADWALL	—	415.34	415.34	DRWG D-53 PAGE 108
S-2	'C' HEADWALL	444.37	—	447.87	DRWG D-53 PAGE 108

CHATEAU RIDGE COURT



DATE
 BY
 CHECKED
 NO.

DATE
 BY
 CHECKED
 NO.

#4
 136

7-72-42

