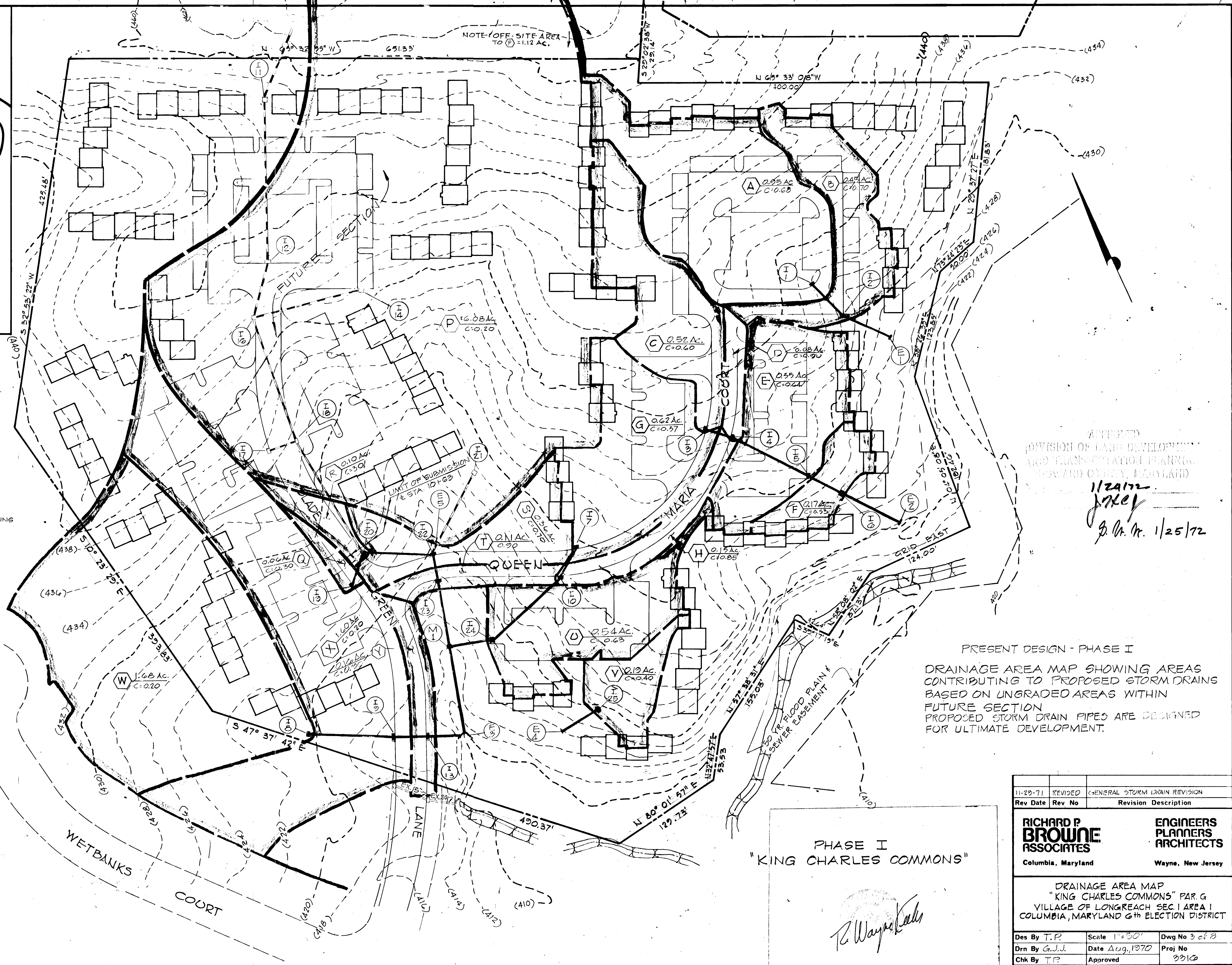
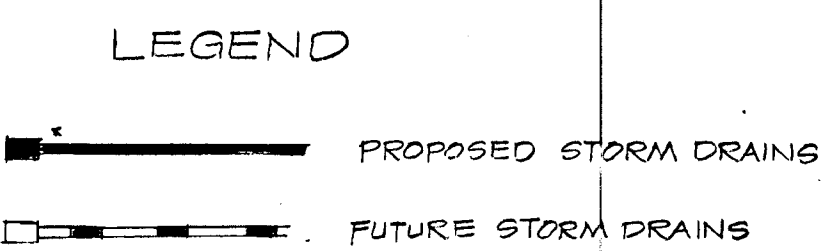


VICINITY MAP



AFFILIATED  
DIVISION OF LAND DEVELOPMENT  
AND TRANSPORTATION PLANNING  
HOWARD COUNTY, MARYLAND

1/23/72  
JKL  
S. G. H. 1/25/72

PRESENT DESIGN - PHASE I  
DRAINAGE AREA MAP SHOWING AREAS CONTRIBUTING TO PROPOSED STORM DRAINS BASED ON UNGRADED AREAS WITHIN FUTURE SECTION. PROPOSED STORM DRAIN PIPES ARE DESIGNED FOR ULTIMATE DEVELOPMENT.

Rev Date	Rev No	Revision Description
11-23-71	REVISED	GENERAL STORM DRAIN REVISION

**RICHARD P. BROWNE ASSOCIATES**  
Columbia, Maryland

**ENGINEERS PLANNERS ARCHITECTS**  
Wayne, New Jersey

DRAINAGE AREA MAP  
"KING CHARLES COMMONS" PAR. G  
VILLAGE OF LONGREACH SEC. I AREA I  
COLUMBIA, MARYLAND 6th ELECTION DISTRICT

Des By T.P.	Scale 1"=50'	Dwg No 3 of 8
Drn By G.J.J.	Date Aug, 1970	Proj No
Chk By T.P.	Approved	3310

AF

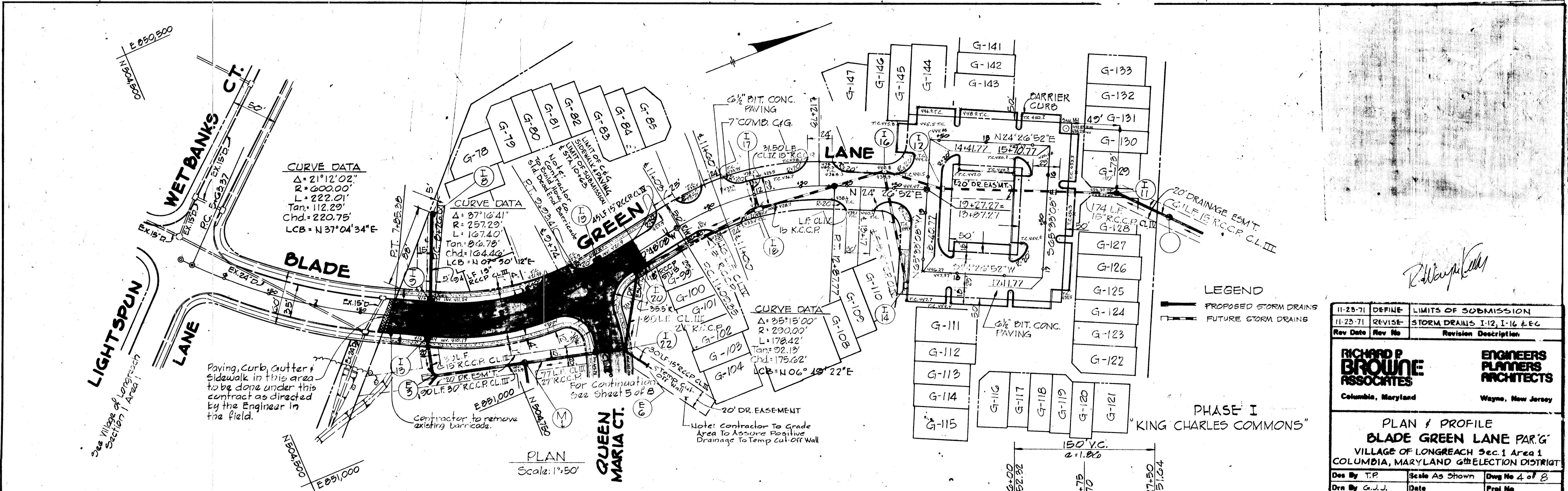
F-72-26

3 of 8



DATE	
BY	
SURVEYED	
PLOTTED	
NOTES BOOK	
RT. OF WAY CHECKED	
NO.	

DATE	
BY	
SURVEYED	
PLOTTED	
NOTES BOOK	
RT. OF WAY CHECKED	
NO.	



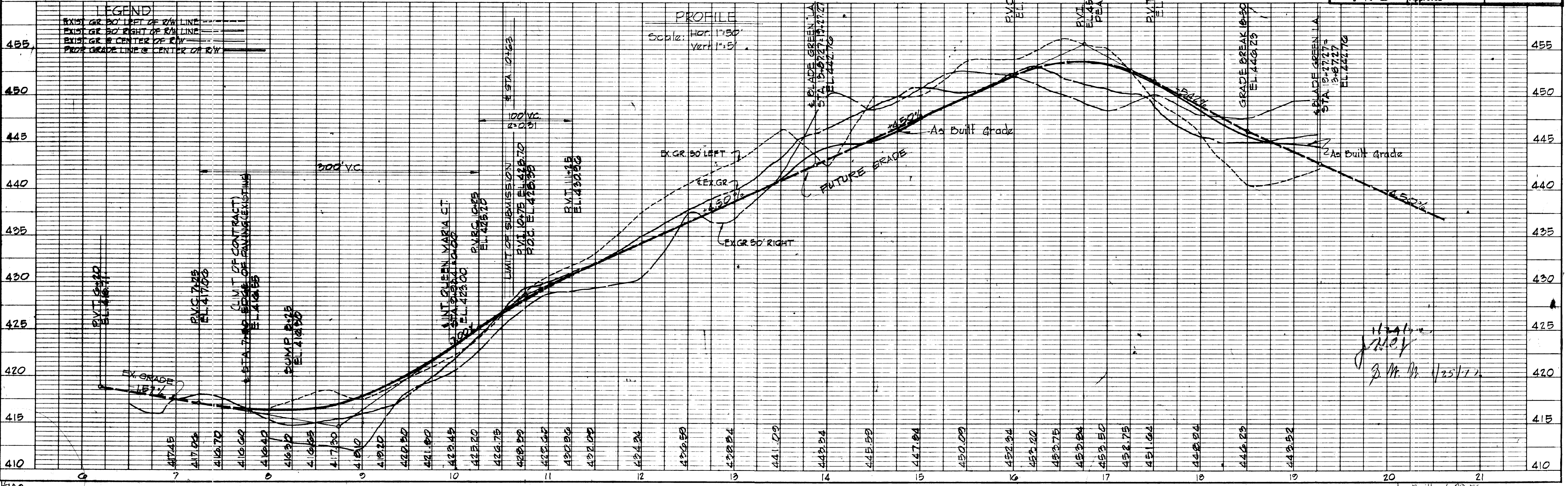
11-25-71	DEFINE	LIMITS OF SUBMISSION
11-23-71	REVISE	STORM DRAINS I-12, I-16 & E.C.
Rev Date	Rev No	Revision Description

**RICHARD P. BROWNE ASSOCIATES**  
 Columbia, Maryland

**ENGINEERS PLANNERS ARCHITECTS**  
 Wayne, New Jersey

**PLAN & PROFILE**  
**BLADE GREEN LANE PAR'G'**  
 VILLAGE OF LONGREACH Sec. 1 Area 1  
 COLUMBIA, MARYLAND 6th ELECTION DISTRICT

Des By	T.P.	Scale	As Shown	Draw No	4 of 8
Drn By	G.J.J.	Date		Proj No	
Chk By	REB	Approved			3810



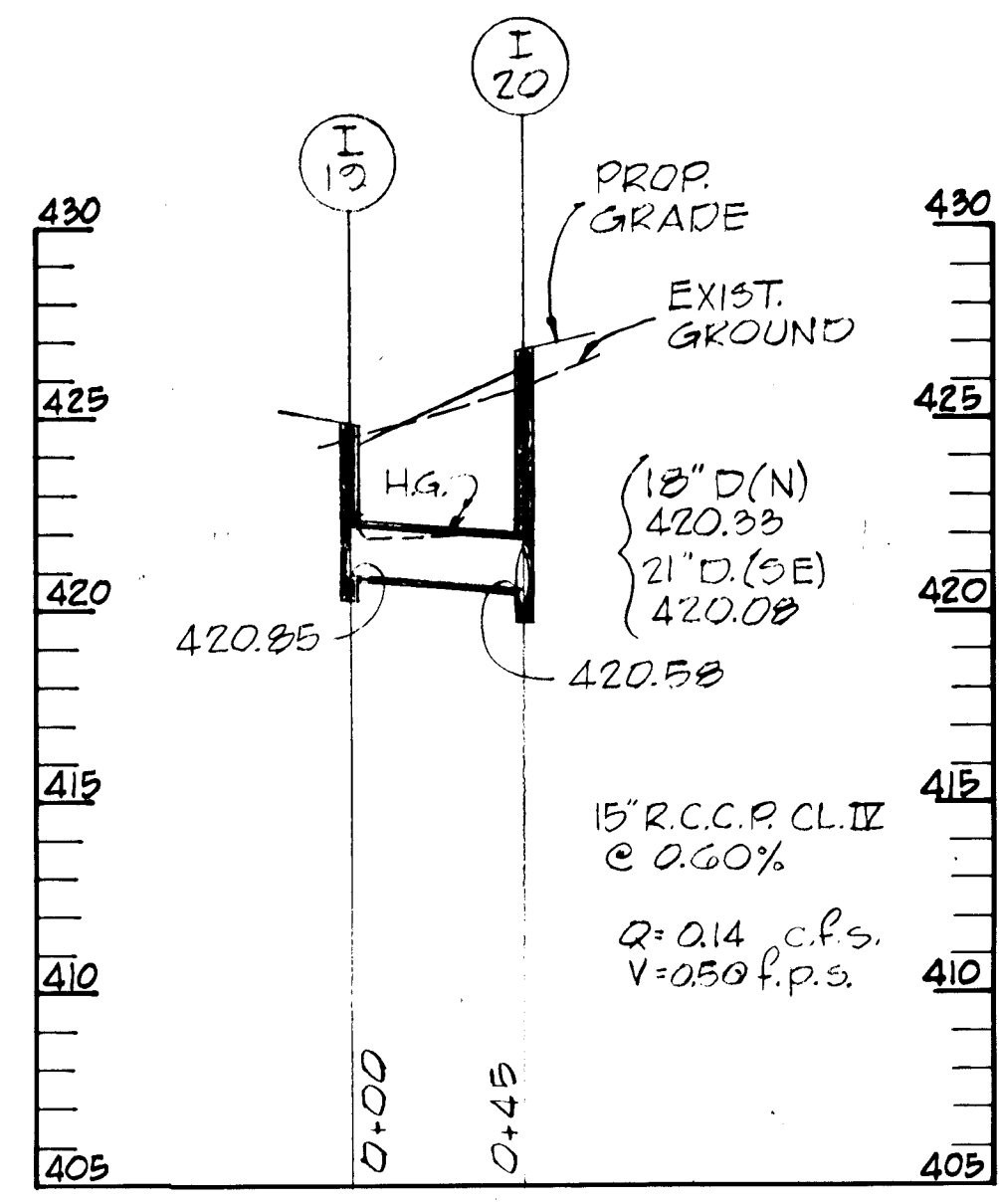
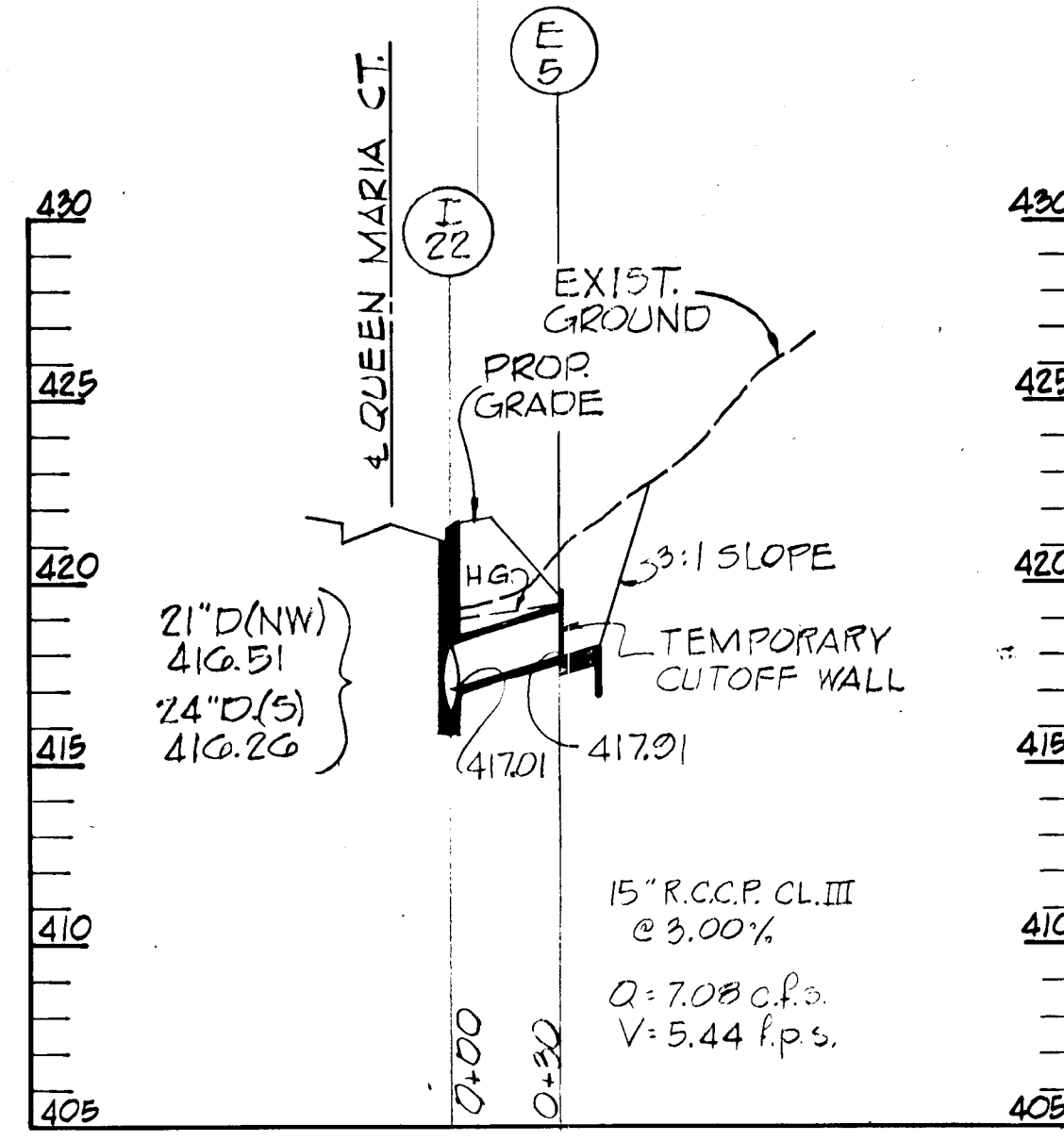
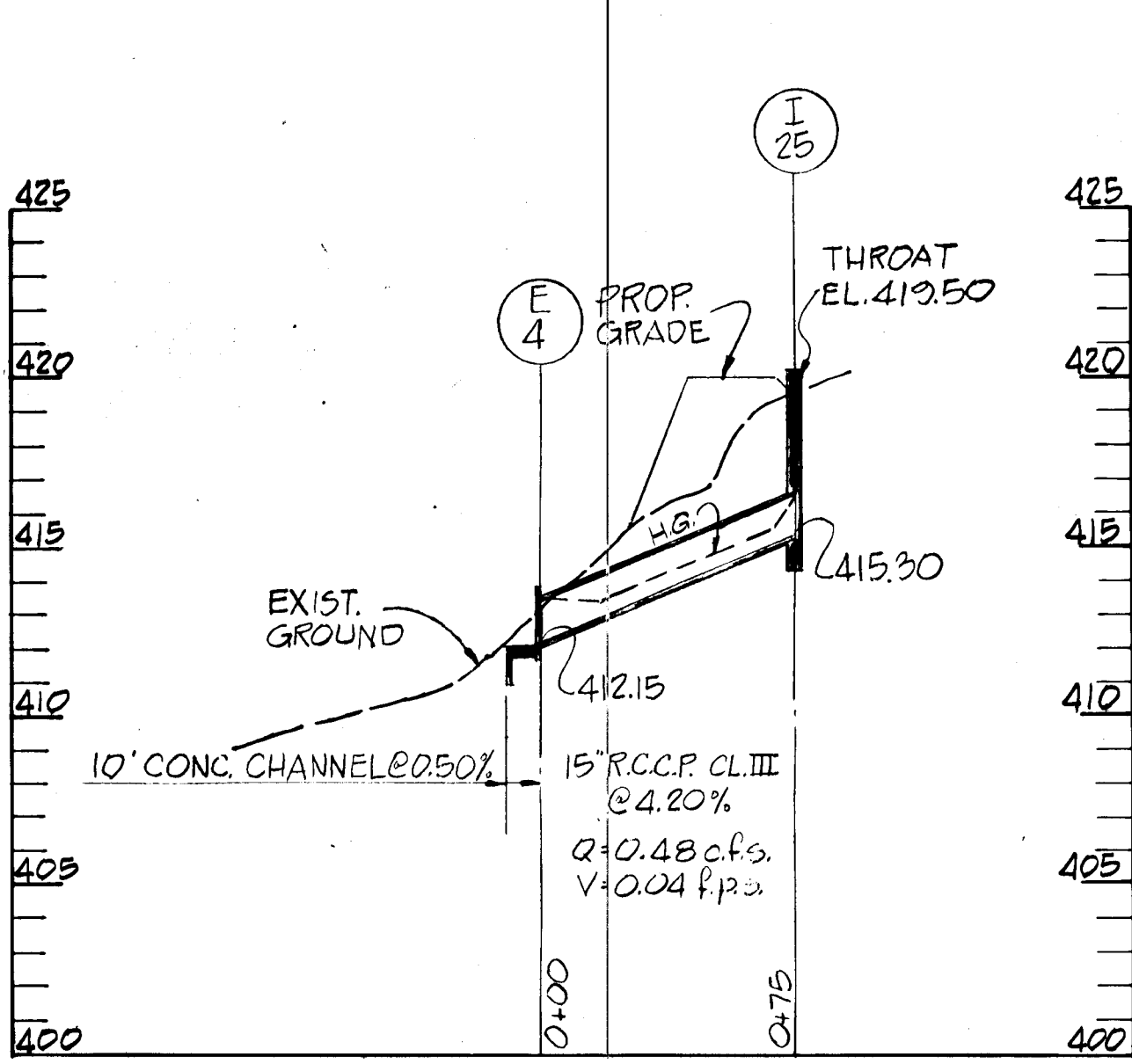
K-E PLATE 1, PLAN-PROFILE  
 KEUFFEL & ESSER CO.

48 7020 PHOENIX BRACING CLOTH 3844  
 MADE IN U.S.A.

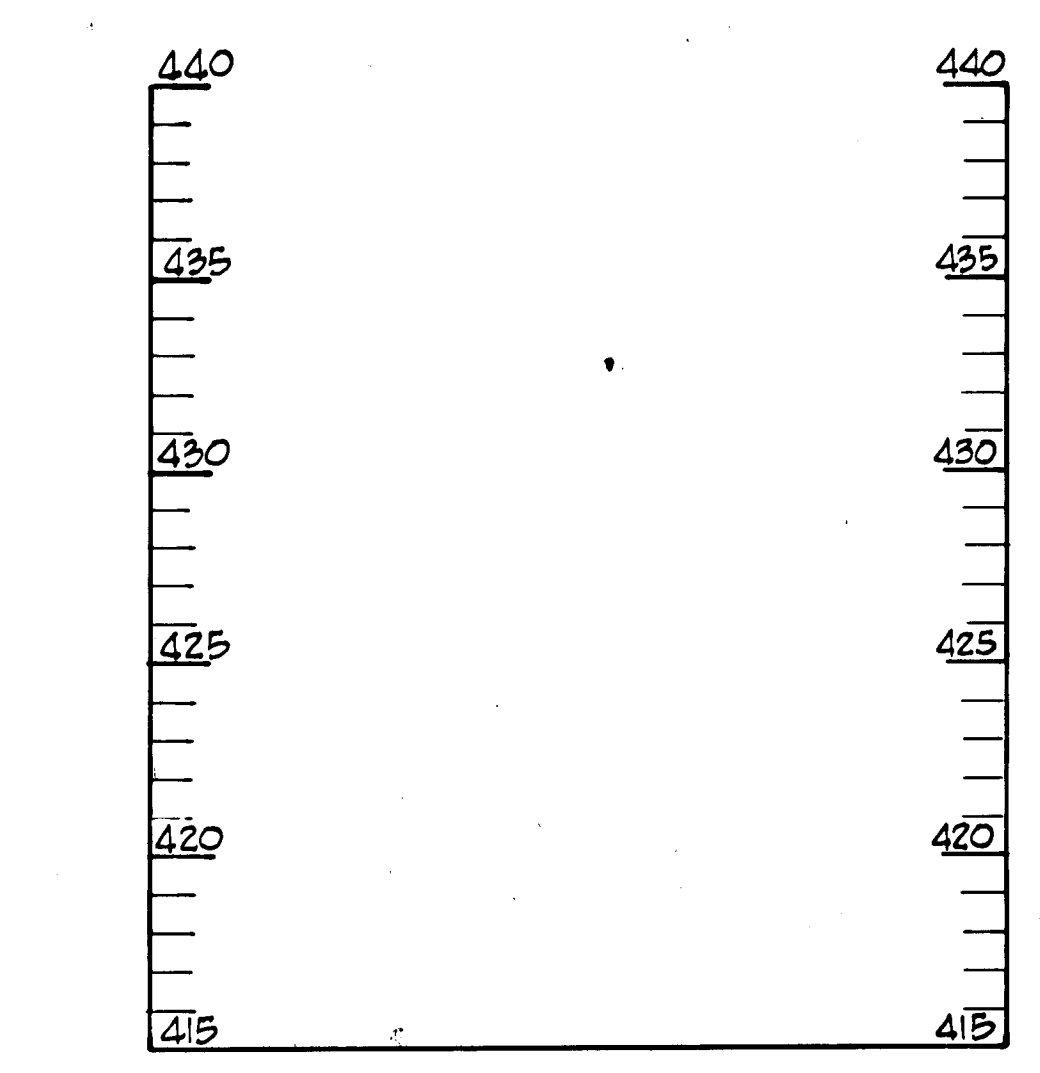
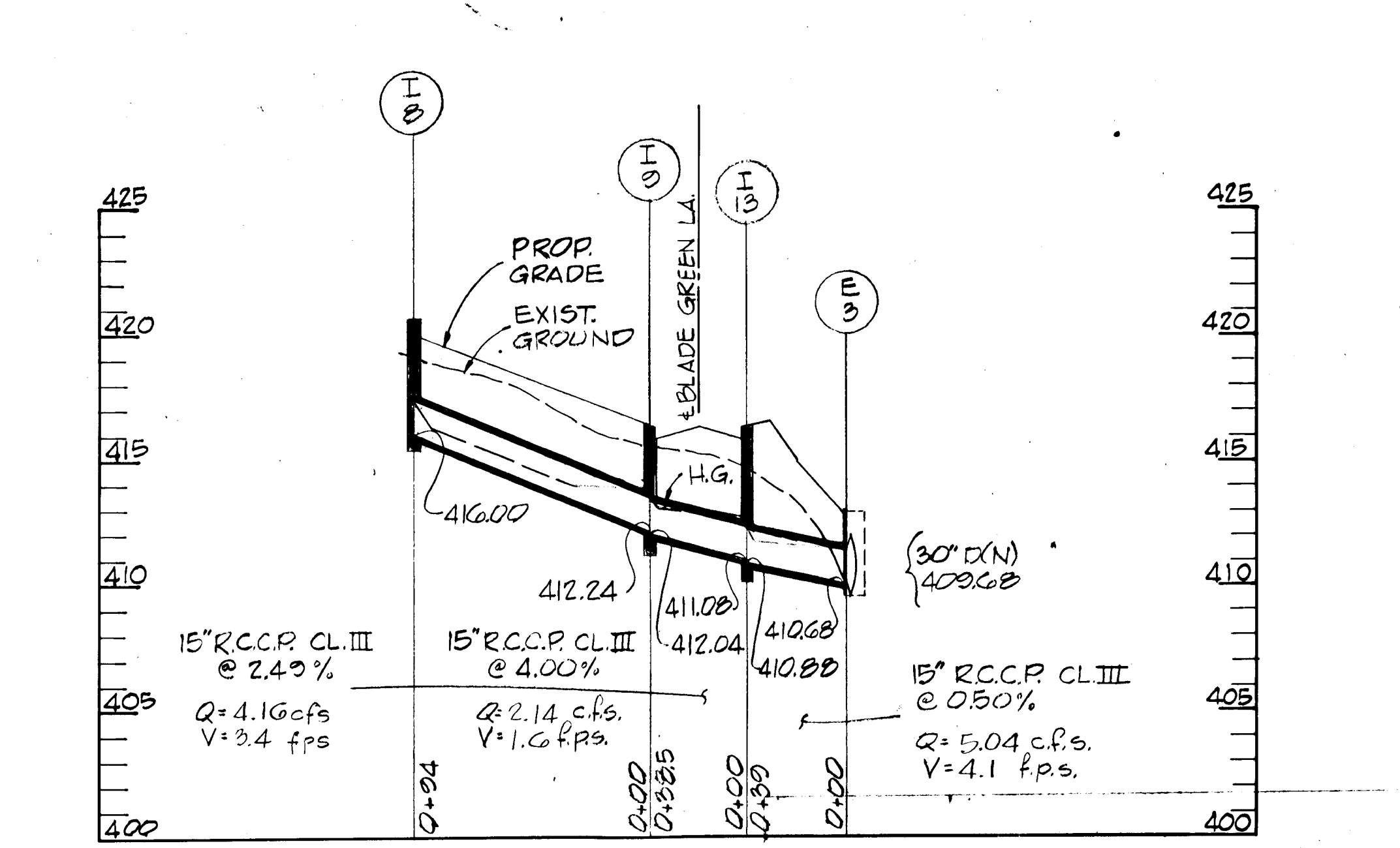
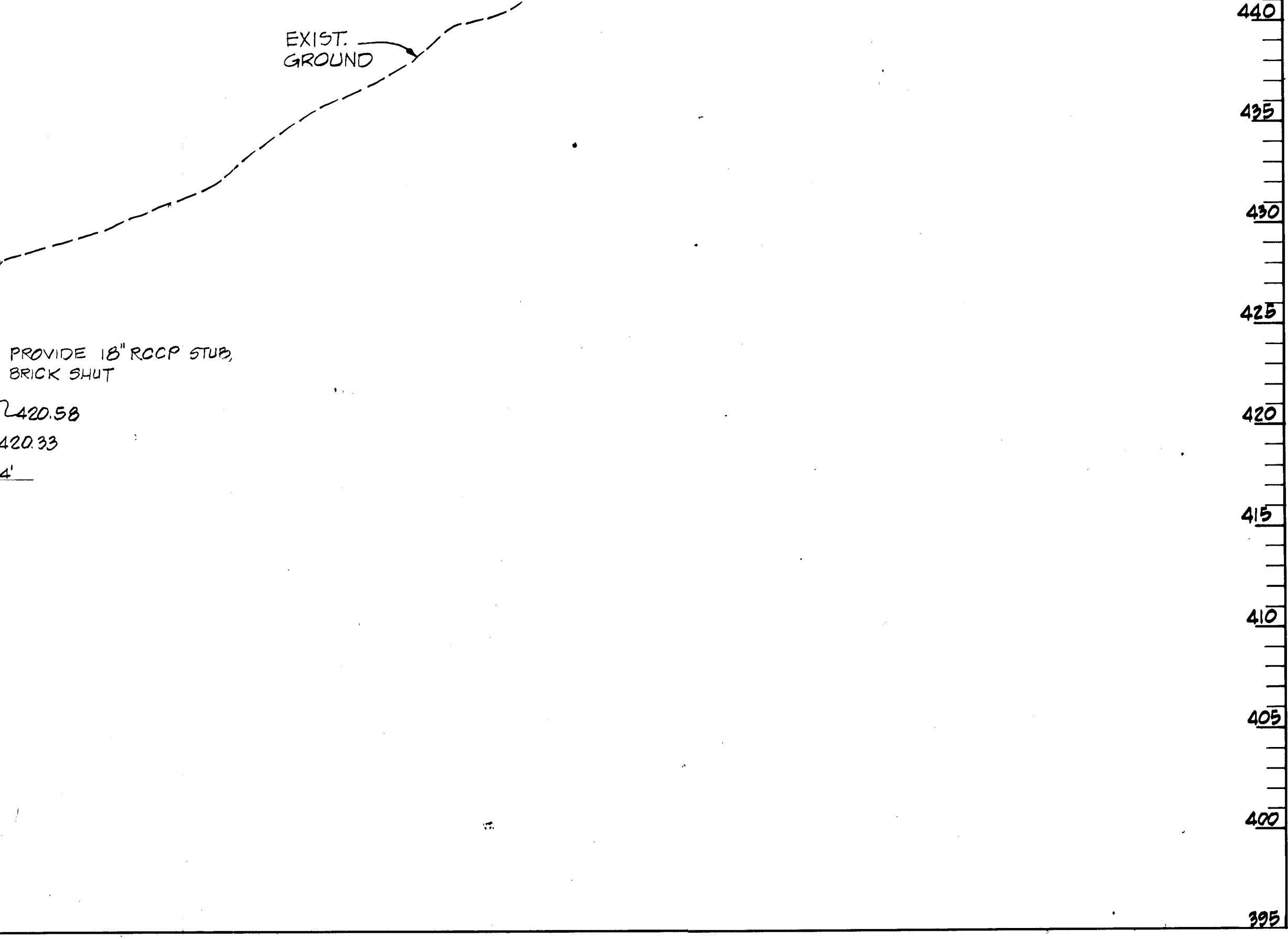
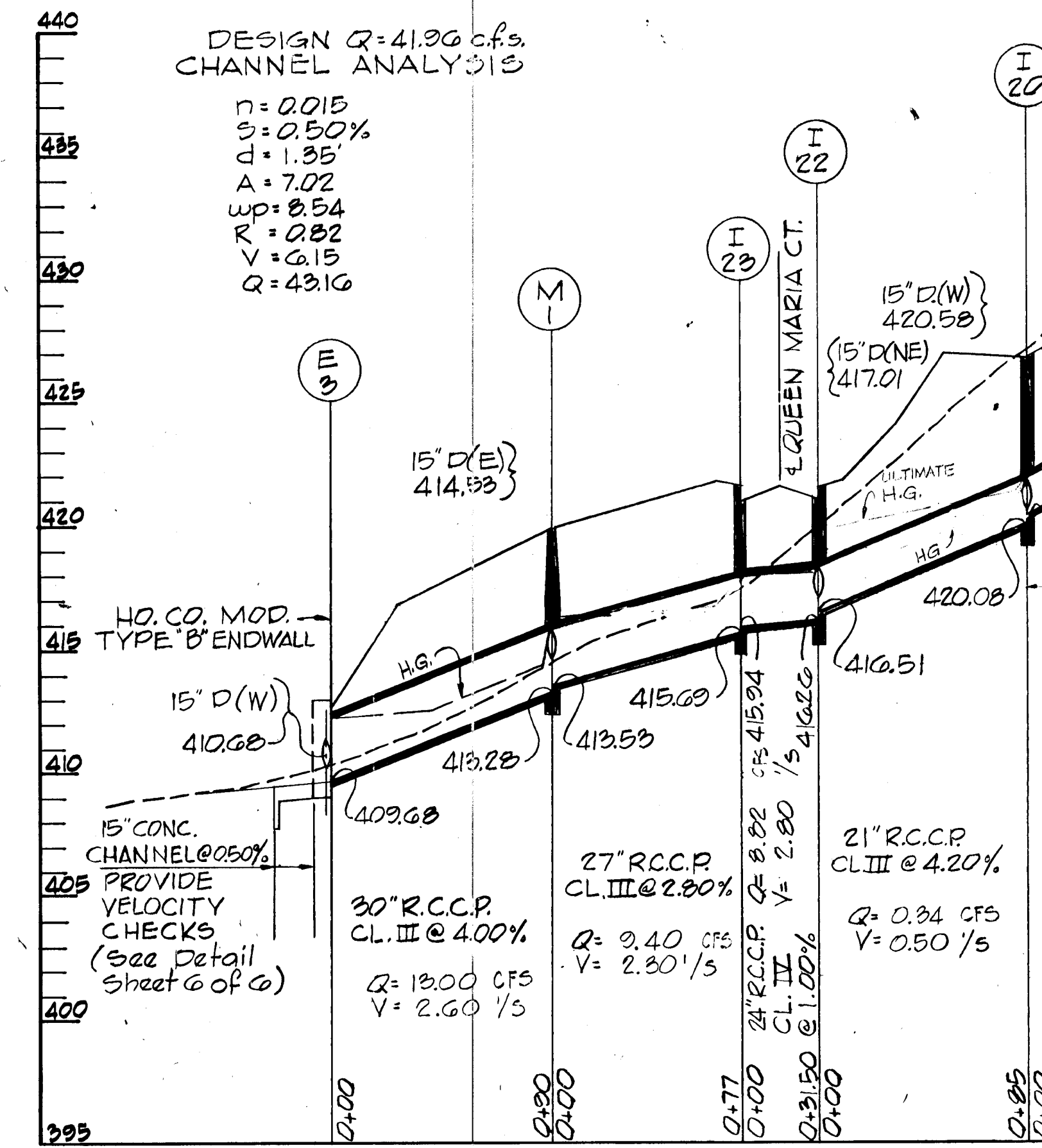
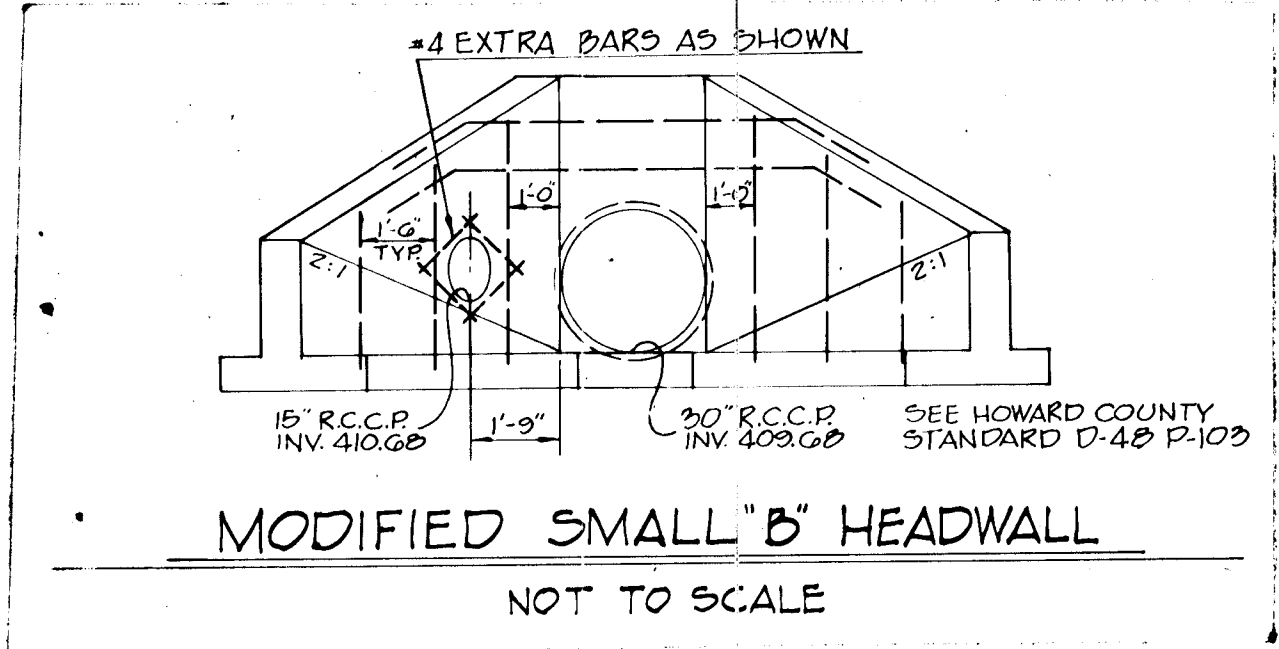








STORM DRAINAGE STRUCTURE SCHEDULE						
NO.	TYPE	LOCATION	INV. IN	INV. OUT	TOP ELEV.	REMARKS
I-25	6" INLET	SEE PLAN		415.30	THROAT 419.50	H.O. CO. STD. G4-C
E-4	6" ENDWALL	SEE PLAN		412.15		H.O. CO. STD. D-52
E-5	6" ENDWALL	SEE PLAN	417.91			TEMP. CUT-OFF WALL
I-19	A-10 INLET	± STA. 10+20 15.75' LEFT		420.85	± 424.97	H.O. CO. STD. G4-A
I-20	A-10 INLET	± STA. 10+50 15.75' RIGHT	420.33	420.08	± 426.87	" " " "
I-22	A-5 INLET	± STA. 0+75 15.75' LEFT	416.51	416.26	± 421.75	" " " "
I-23	A-5 INLET	± STA. 0+75 15.75' RIGHT	415.04	415.69	± 421.75	" " " "
M-1	6" MANHOLE	SEE PLAN	413.53	413.28	± 420.00	H.O. CO. STD. D-102
I-8	6" INLET	SEE PLAN		416.00	± THROAT 420.00	H.O. CO. STD. G4-C
I-9	A-5 INLET	± STA. 8+25 10.75' LEFT	412.24	412.04	± 416.32	H.O. CO. STD. G4-A
I-13	A-5 INLET	± STA. 8+25 10.75' RIGHT	411.08	410.88	± 416.32	H.O. CO. STD. G4-A
E-3	MODIFIED 2' H.W.	± STA. 8+33 58.00' RIGHT		410.68		H.O. CO. STD. D-48



1/2 scale  
*[Signature]*  
 1/25/72

1-3-72 REVISE HYDRAULIC GRADIENT LINE  
 11-23-71 REVISED STORM DRAIN I-25 TO E-4

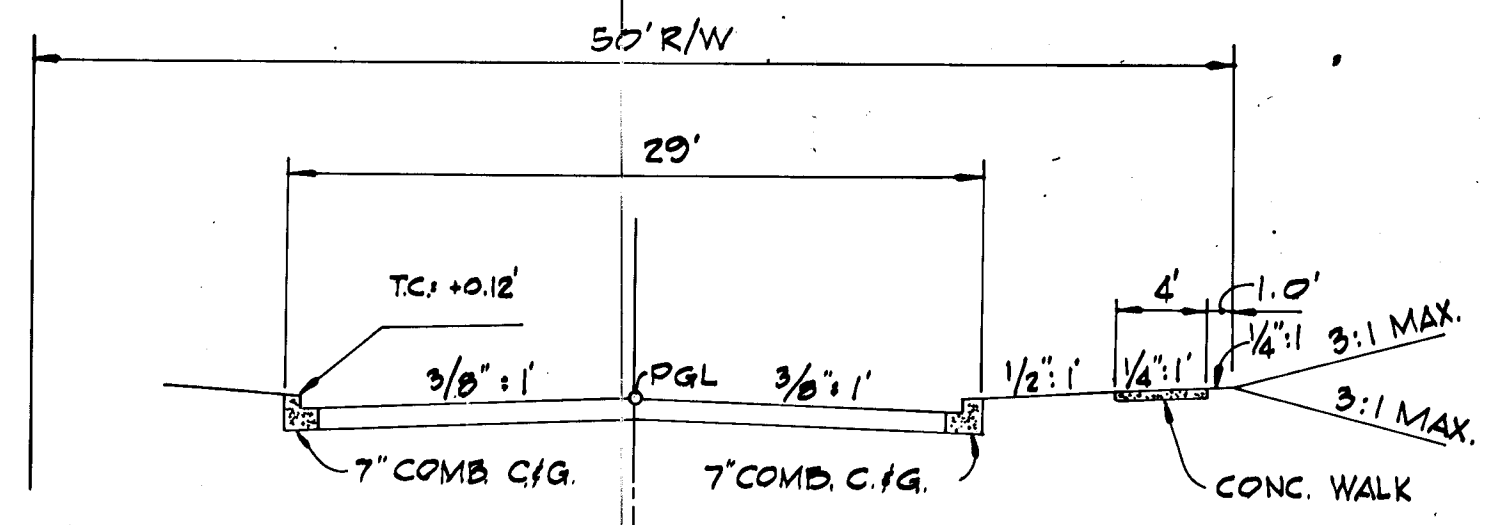
**RICHARD P. BROWNE ASSOCIATES**  
 Columbia, Maryland.

**ENGINEERS PLANNERS ARCHITECTS**  
 Wayne, New Jersey

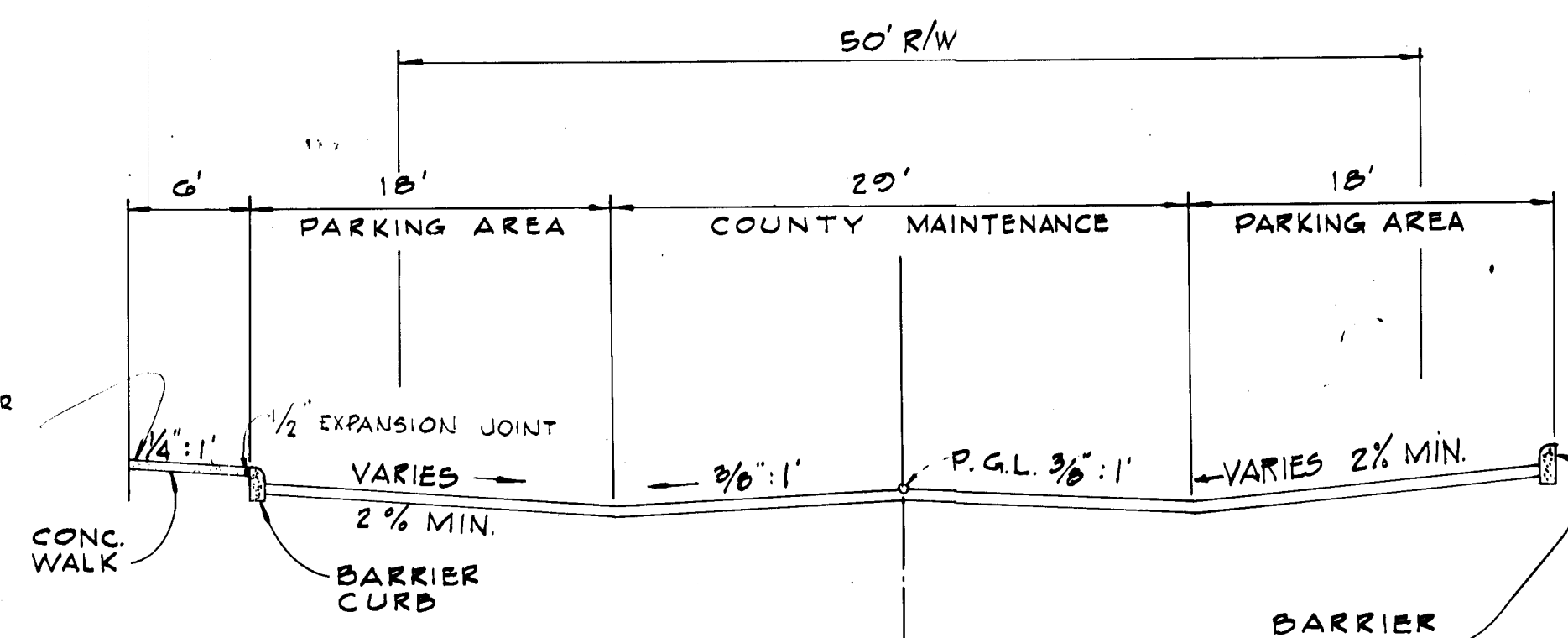
STORM DRAIN PROFILES & DETAILS  
 "KING CHARLES COMMONS" PAR. 'G'  
 VILLAGE OF LONGREACH SEC. 1 AREA 1  
 COLUMBIA, MARYLAND 6th ELECTION DISTRICT

Des By T.P. Scale As Shown Dwg No 6 of 8  
 Dwn By G.J.J. Date \_\_\_\_\_ Proj No \_\_\_\_\_  
 Chk By T.P. Approved \_\_\_\_\_ 3316

PROFILES  
 SCALE: HOR. 1"=50'  
 VERT. 1"=5'

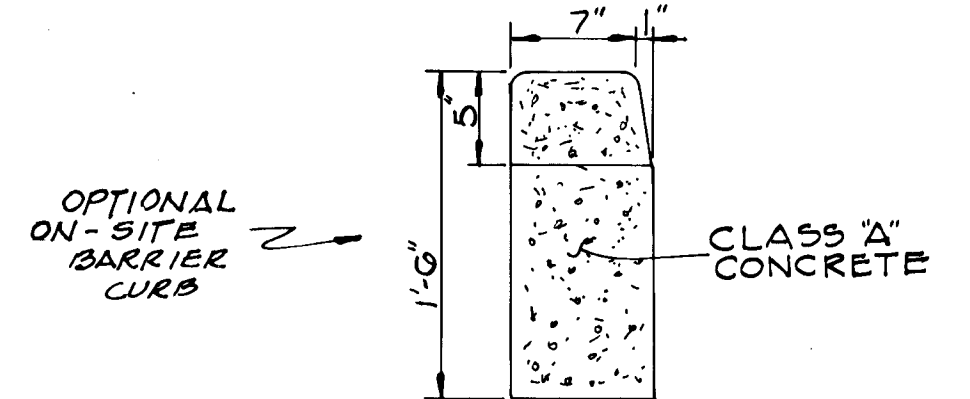


50' R/W  
STANDARD ROAD DETAIL  
TYPICAL SECTION  
NO SCALE  
HOWARD COUNTY STANDARD DRAWING  
PAGE 72 DRWG. 17

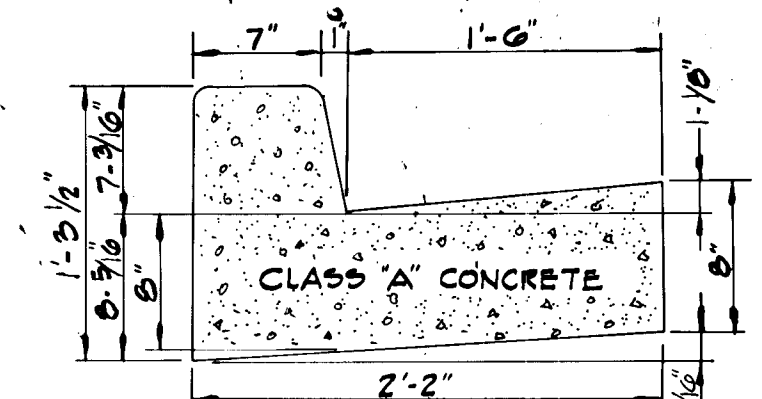


PARKING AREA SECTION  
NO SCALE

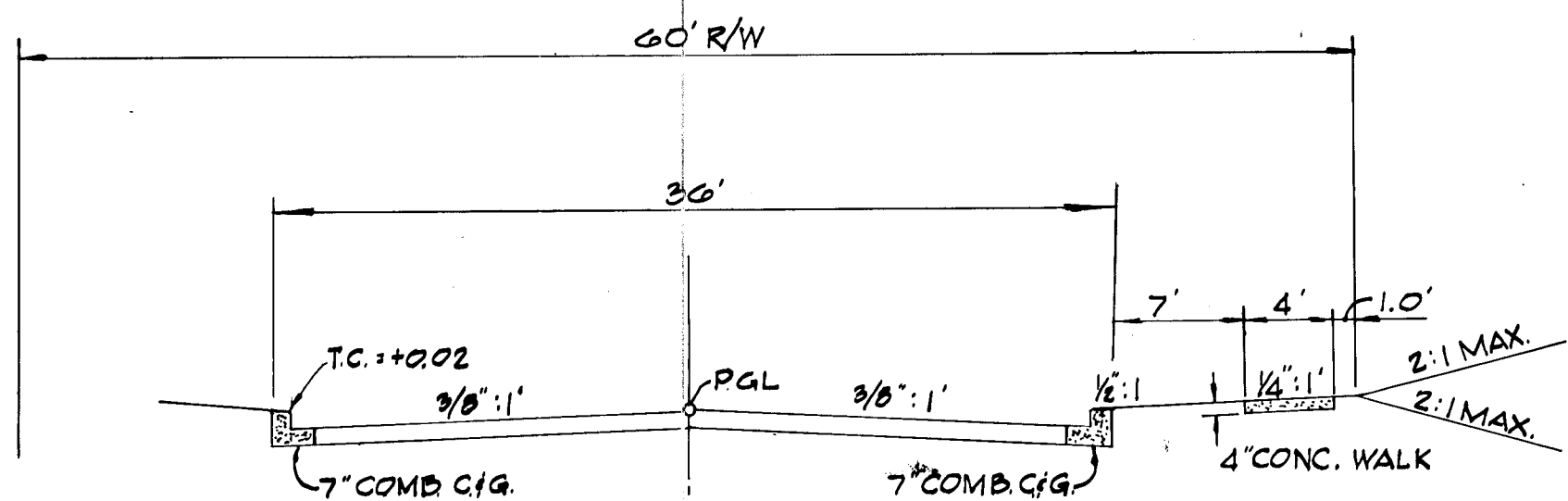
STORM DRAINAGE STRUCTURE SCHEDULE									
NO.	TYPE	LOCATION	INV. IN	INV. OUT	TOP ELEV.	REMARKS			
I-2	A-B INLET	SEE PLAN	428.46	425.20		HO. CO. STD. 64-A			
E-1	TYPE 'C' HEADWALL	SEE PLAN	426.60			HO. CO. STD. D-52			
I-3	A-B INLET	± STA. 4+75 - 15.75' LEFT	429.30	424.58	424.58	HO. CO. STD. 64-A			
I-4	A-B INLET	± STA. 4+75 - 15.75' RIGHT	429.28	424.58	424.58	" " " "			
I-5	A-B INLET	SEE PLAN	425.78	425.58	425.40	" " " "			
I-6	'C' INLET	SEE PLAN	425.27	425.07	± THROAT = 429.50	HO. CO. STD. 64-C			
E-2	TYPE 'C' HEADWALL	SEE PLAN	418.21			HO. CO. STD. D-52			
I-7	A-B INLET	± STA. 2+20 - 15.75' LEFT	422.50	422.67		HO. CO. STD. 64-A			
I-10	A-B INLET	± STA. 2+00 - 15.75' RIGHT	421.61	421.41	421.87	" " " "			
I-24	A-B INLET	SEE PLAN	417.10	416.90	421.50	" " " "			
I-1	A-B INLET	± STA. 10+40 - 20' RIGHT	431.47	429.70		" " " "			



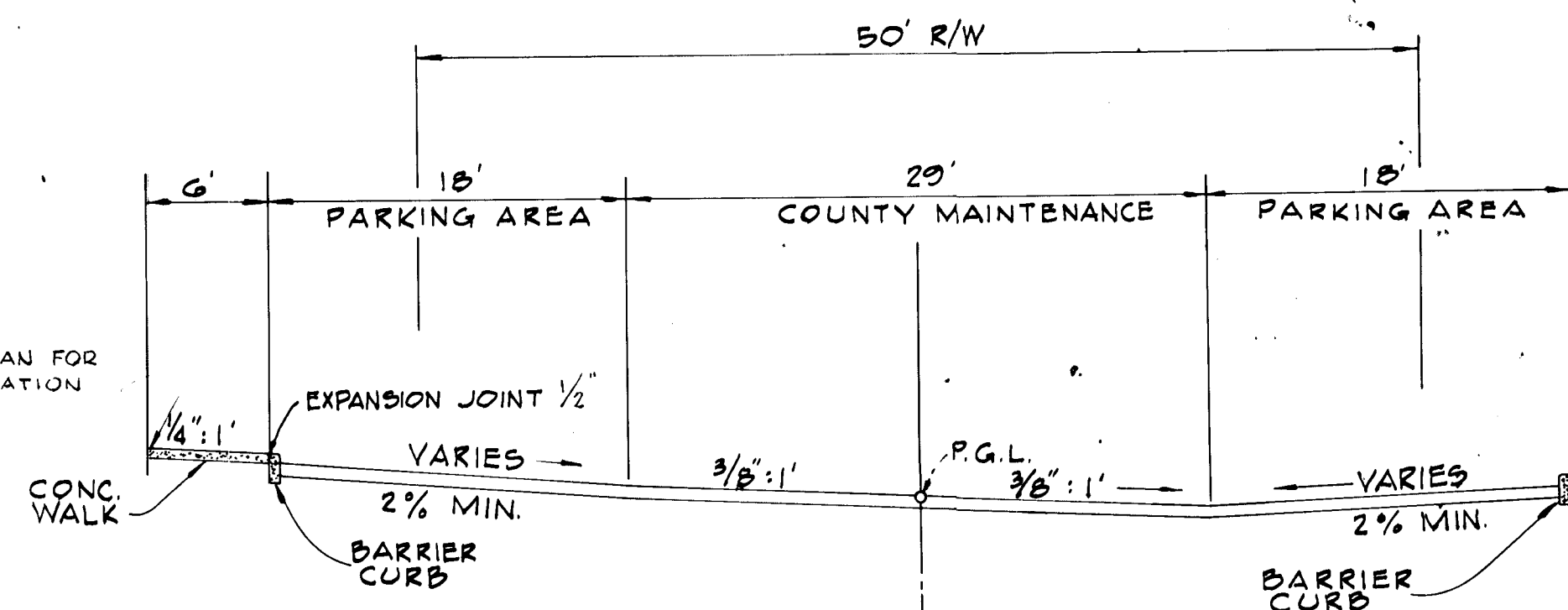
STANDARD BARRIER CURB  
NO SCALE  
HOWARD COUNTY STANDARD DRAWING  
PAGE 95 DRAWING D-40



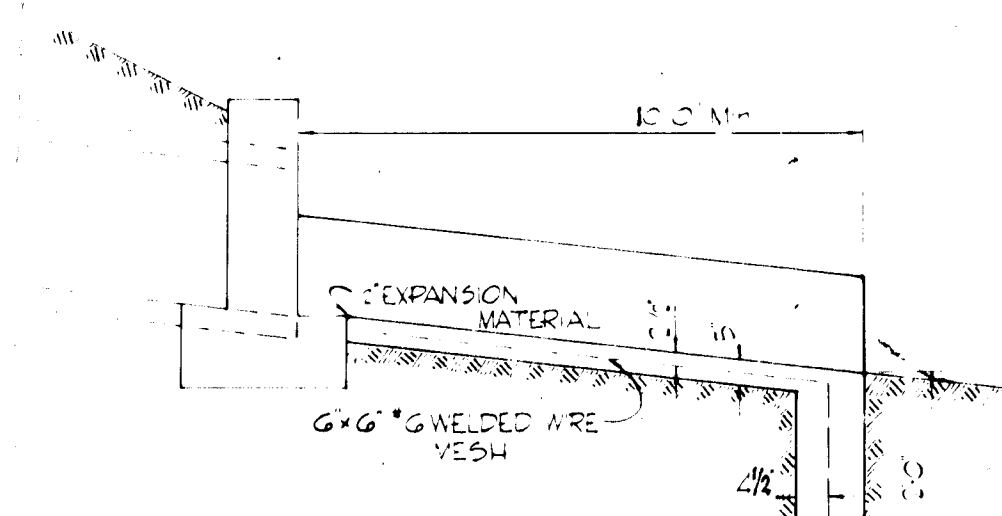
STANDARD 7" COMBINATION CURB & GUTTER  
NO SCALE  
HOWARD COUNTY STANDARD DRAWING  
PAGE 95 DRAWING D-40



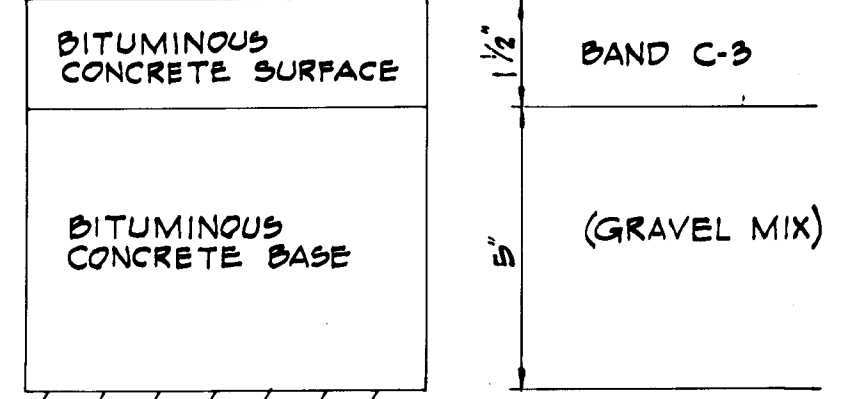
60' R/W  
STANDARD ROAD SECTION  
TYPICAL SECTION  
NO SCALE  
HOWARD COUNTY STANDARD DRAWING  
PAGE 72 DRWG. 17



PARKING AREA SECTION  
NO SCALE

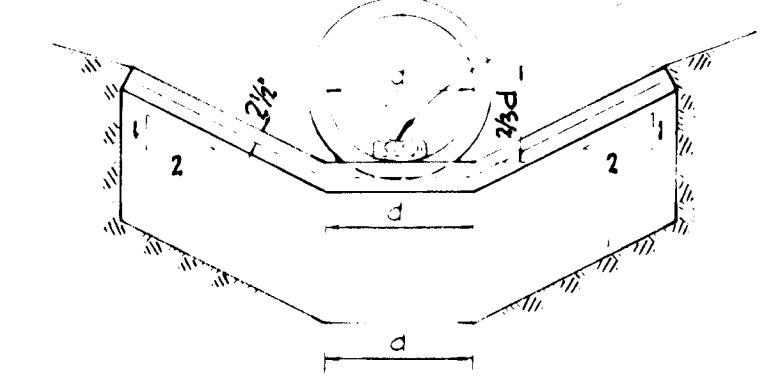


1. Stones shall be 'Man Stones'. Normal size shall be 2" x 2".
2. 2" x 2" stones shall be placed 1" on a minimum from end of headwall.
3. No stones are to be located within 3'-0" from end of apron.

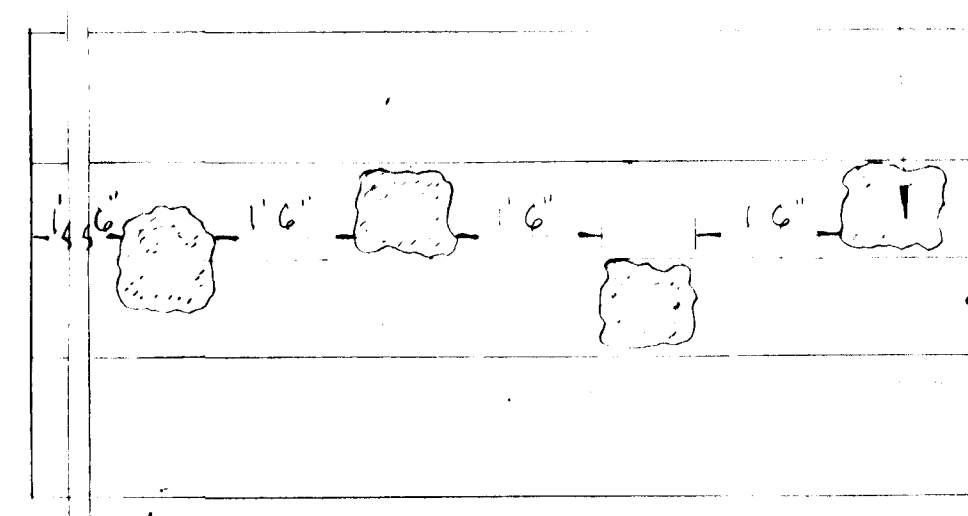


CLEARING & GRADING: ARTICLE C-1  
SUBGRADE: ARTICLE C-2  
BASE COURSE: ARTICLE C-3  
SURFACE COURSE: ARTICLE C-31

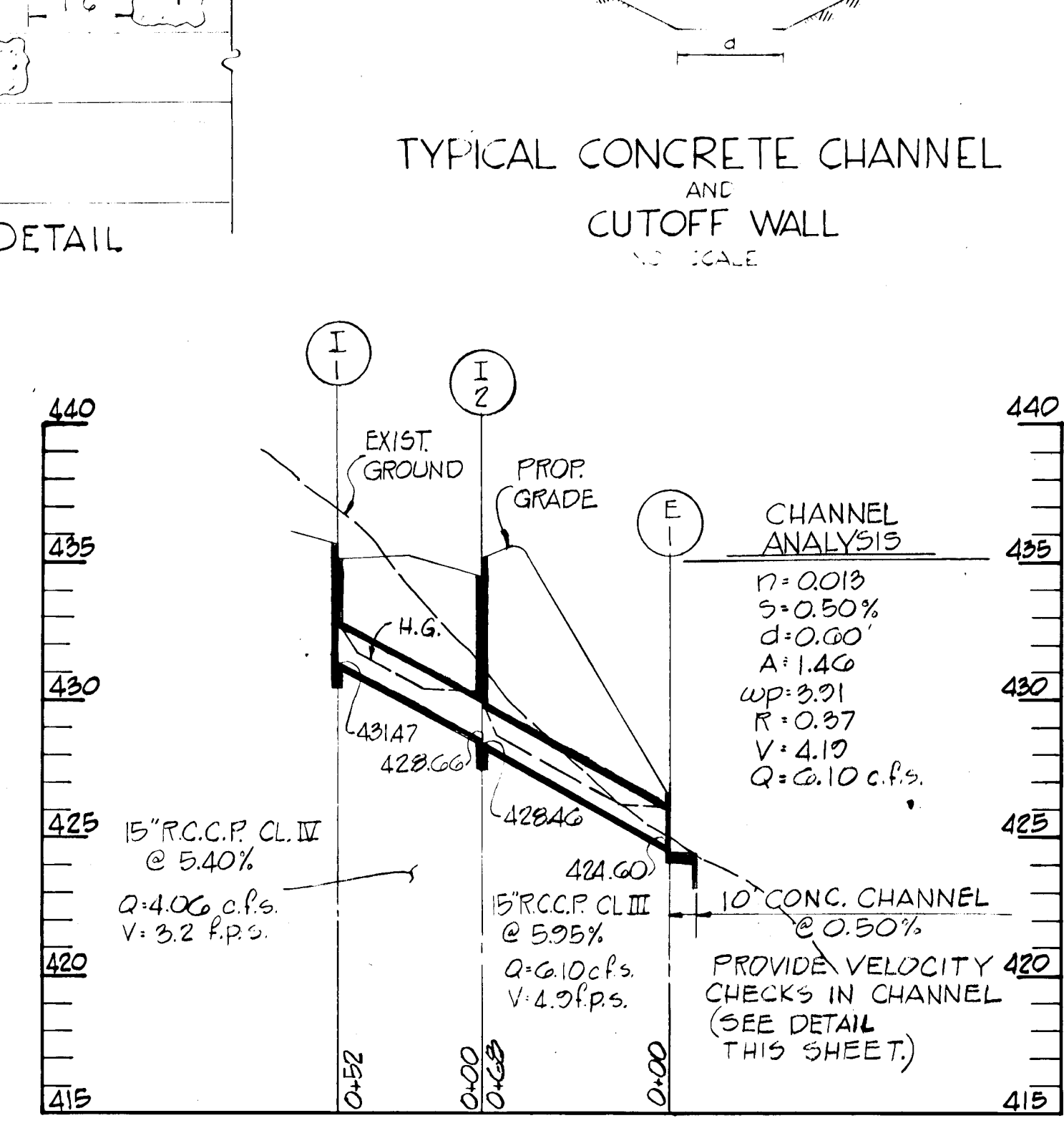
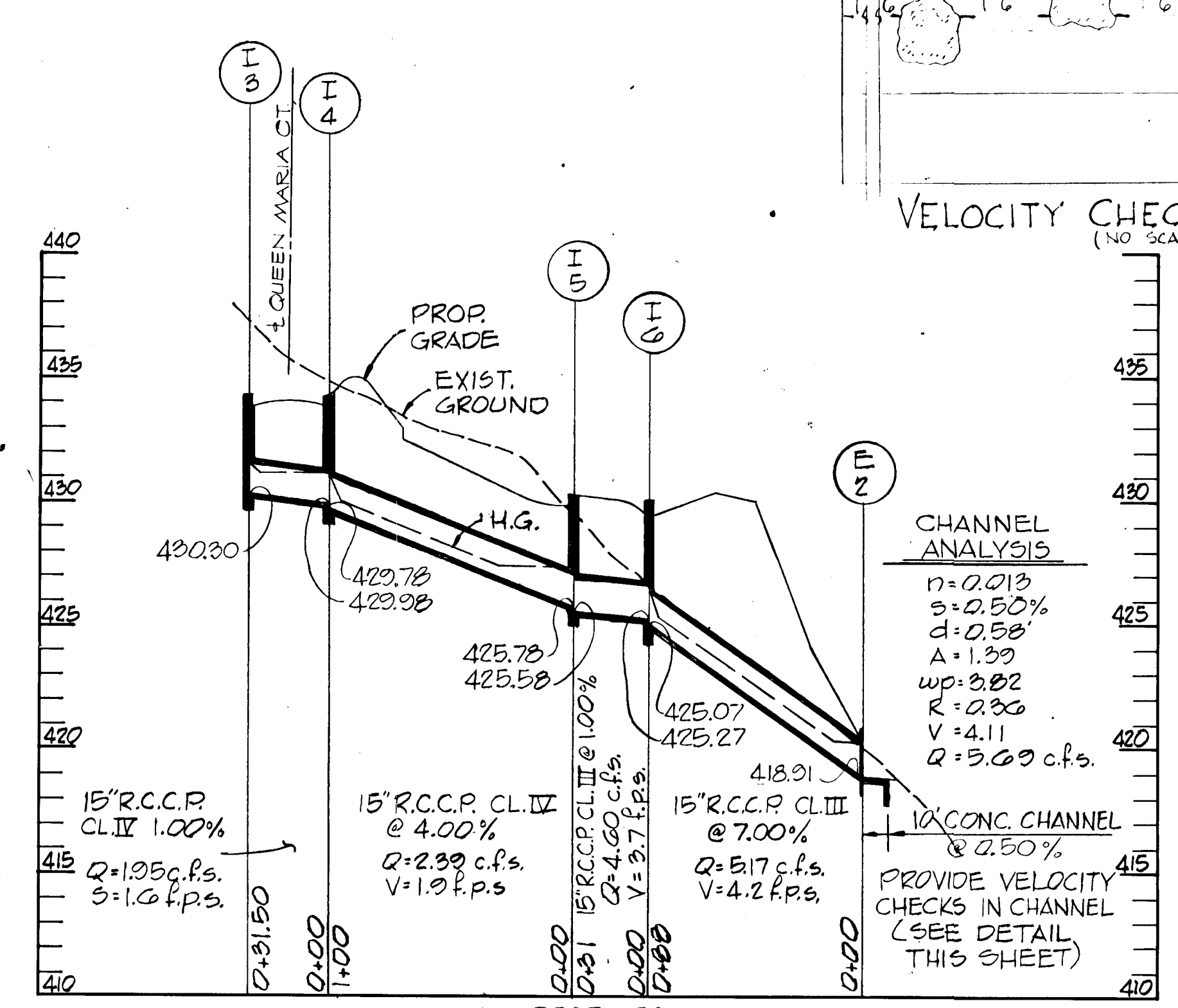
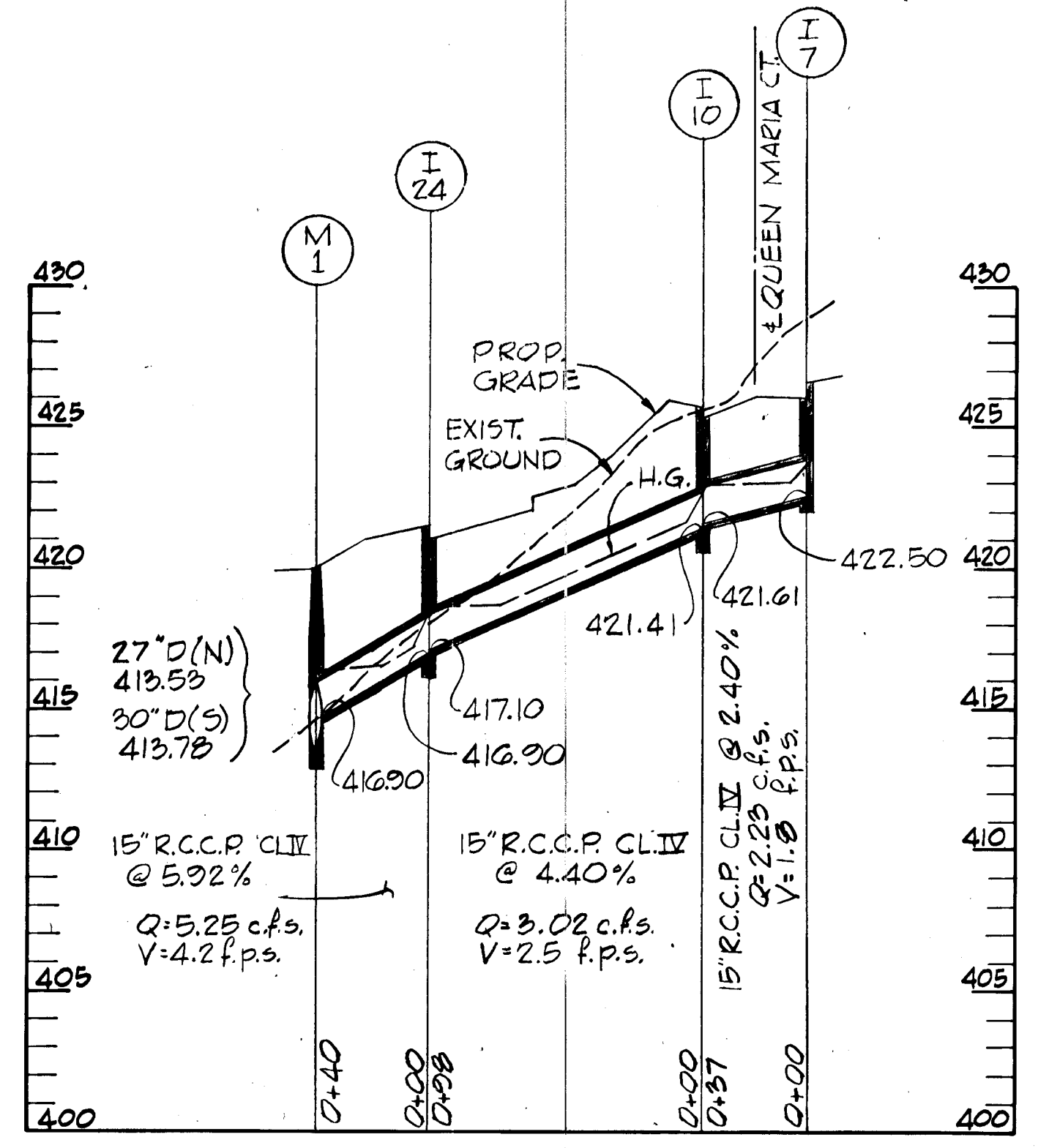
TO BE CONSTRUCTED IN ACCORDANCE WITH THE HOWARD COUNTY ROAD CONSTRUCTION CODE AND SPECIFICATIONS.



TYPICAL CONCRETE CHANNEL AND CUTOFF WALL  
NO SCALE



VELOCITY CHECK DETAIL  
NO SCALE



PHASE I "KING CHARLES COMMONS"

DIVISION OF LAND DEVELOPMENT AND PLANNING  
AND PLANNING  
COLUMBIA, MARYLAND

1/24/72  
J.M.H.  
1/25/72

Richard P. Browne

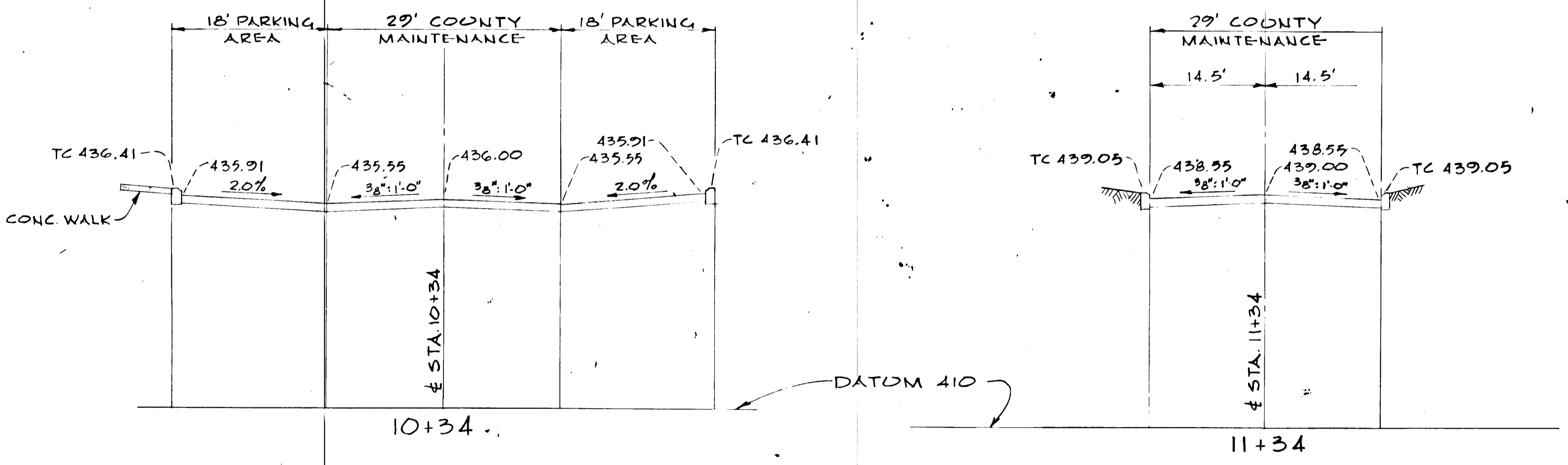
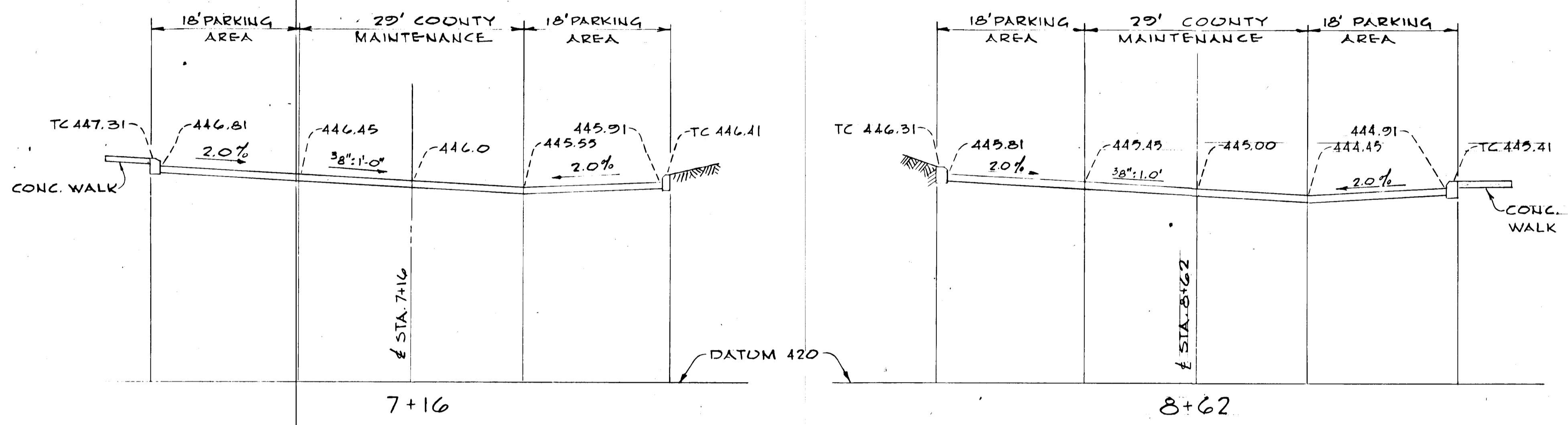
11-23-71	REVISE	TYPICAL PARKING LOT SECTION
11-23-71	REVISE	STORM DRAINS I-1, I-2, E-1
Rev Date	Rev No	Revision Description

**RICHARD P. BROWNE ASSOCIATES**  
Columbia, Maryland

**ENGINEERS PLANNERS ARCHITECTS**  
Wayne, New Jersey

STORM DRAIN PROFILES & DETAILS & ROADWAY DETAILS  
"KING CHARLES COMMONS"  
VILLAGE OF LONGREACH SEC. I AREA I  
COLUMBIA, MARYLAND 6TH ELECTION DISTRICT

Des By	T.P.	Scale	As Shown	Dwg No	7 of 8
Drn By	G.J.J.	Date		Proj No	
Chk By	T.P. & R.E.B.	Approved			3316



ROADWAY SECTIONS  
 QUEEN MARIA COURT  
 SCALE 1"=10'

APPROVED  
 DIVISION OF LAND DEVELOPMENT  
 AND PLANNING  
 1/24/72  
 J.N.C.  
 S. H. R. 1/25/72

PHASE I  
 "KING CHARLES COMMONS"



Rev Date	Rev No	Revision Description

**RICHARD P. BROWNE ASSOCIATES**  
 Columbia, Maryland

**ENGINEERS PLANNERS ARCHITECTS**  
 Wayne, New Jersey

ROADWAY SECTIONS  
 KING CHARLES COMMONS  
 VILLAGE OF LONGREACH SEC I AREA I  
 COLUMBIA, MARYLAND 6th ELECTION DISTRICT

Des By T.P.	Scale 1"=10' 0"	Dwg No 801 B
Drn By J.J.B.	Date	Proj No
Chk By T.P.	Approved	3316