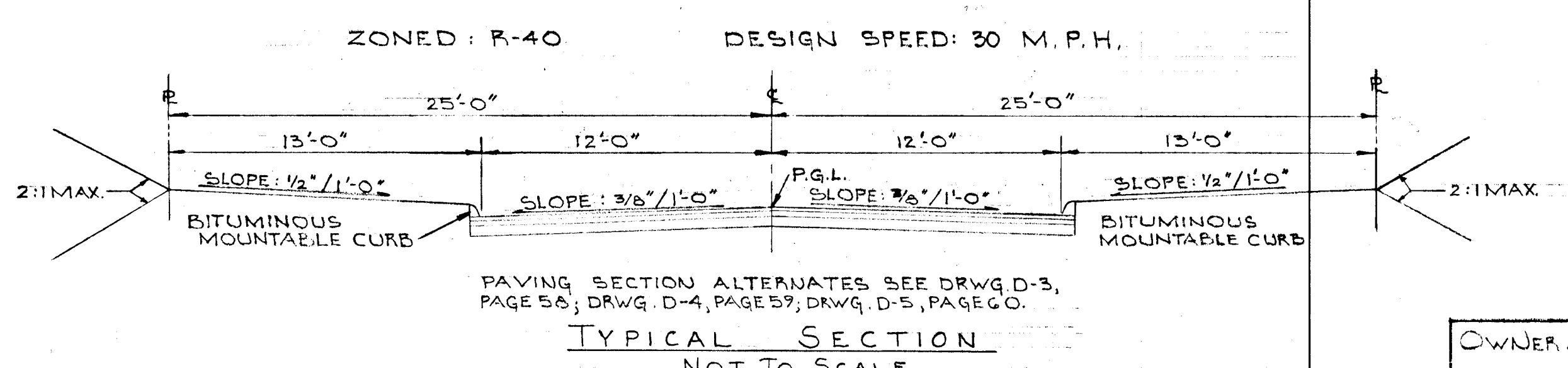
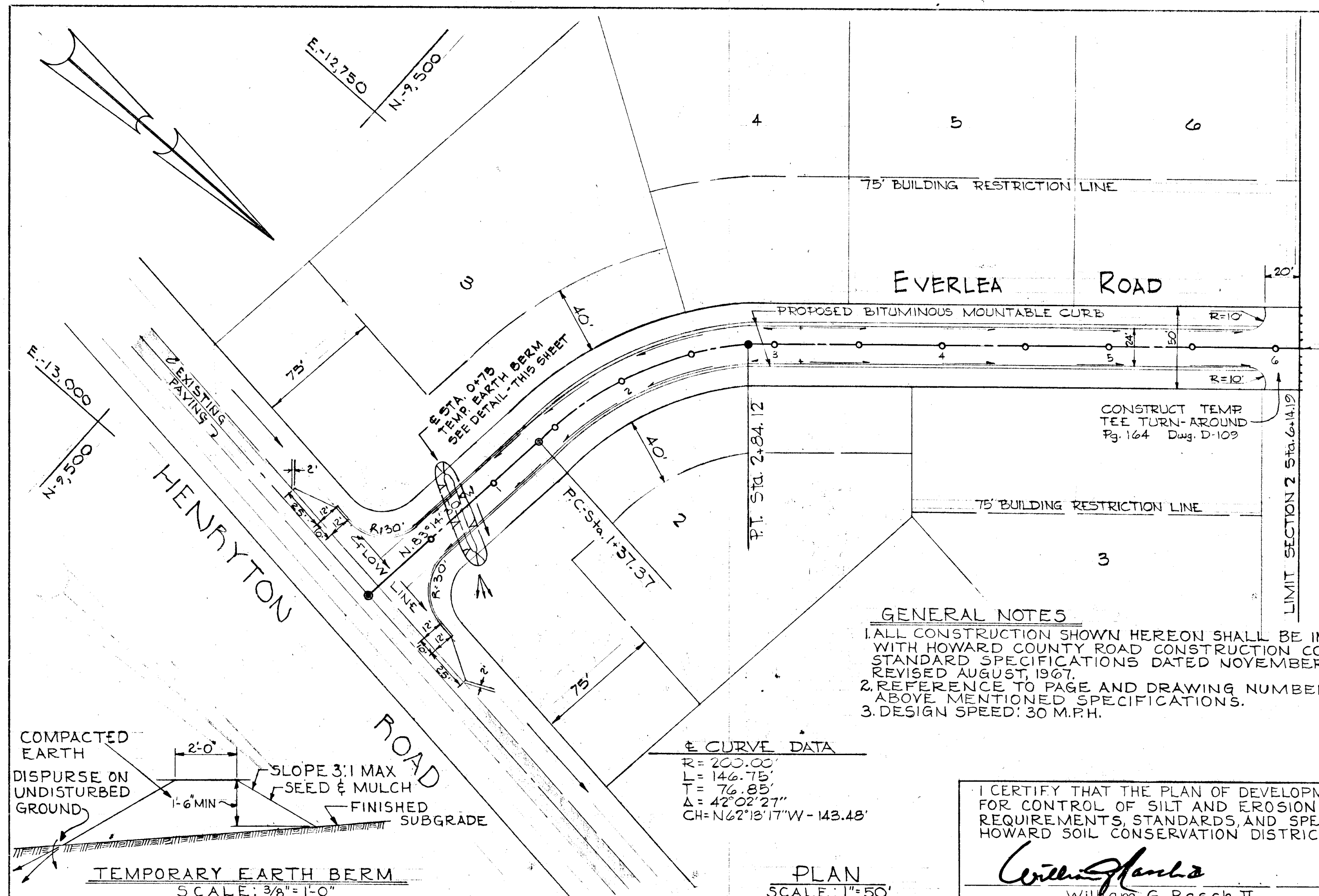


DATE	
BY	
SUPPLIED	
ALIGNMENT CHECKED	
NOTE BOOK	
FT. BY WAY CHECKED	
NO	



- SEDIMENT CONTROL NOTES**
- THE DEVELOPER SHALL NOTIFY THE HOWARD COUNTY SOIL CONSERVATION DISTRICT AT LEAST 24 HOURS PRIOR TO BEGINNING ANY CONSTRUCTION SHOWN HEREON.
 - SEDIMENT CONTROL MEASURES MUST BE INSTALLED PRIOR TO GRADING OPERATION.
 - ALL GRADED AREAS NOT TO BE SODDED SHALL BE STABILIZED BY SEEDING AND MULCHING IN ACCORDANCE WITH THE FOLLOWING:
 - SITE PREPARATION
 - HARROW OR DISC IN AREAS PROPOSED TO BE SEEDED, THE FOLLOWING MATERIALS AT THE SPECIFIED RATE, TO A DEPTH OF 3":
 - PULVERIZED BURNED LIMESTONE @ 1/2 TONS/ACRE
 - COMMERCIAL FERTILIZER 10-10-10 @ 3/4 TON/ACRE
 - SUPER PHOSPHATE @ 600 LBS/ACRE
 - SEEDING
 - SHOW THE FOLLOWING SEED MIXTURES @ THE RATE OF 200 LBS/ACRE WITH A MECHANICAL SPREADER:
 - 20% ANNUAL RYE GRASS
 - 80% KENTUCKY 31 FESCUE (K-31)
 - THE SEEDED AREA SHALL THEN BE RAKED WITH A YORK RAKE (MINIMUM OF 2 PASSES), COVERED AND COMPACTED WITH CULTI PACKER OR OTHER APPROVED METHOD.
 - MULCH
 - SEEDED AREAS SHALL BE UNIFORMLY MULCHED IMMEDIATELY AFTER SEEDING WITH UNWEATHERED SMALL GRAIN STRAW AT THE RATE OF 1 1/2 TO 2 TONS/ACRE.
 - THE MULCH DOWN WITH LIQUID ASPHALT @ 0.1 GAL/S.Y. OR EMULSIFIED ASPHALT @ 0.04 GAL/S.Y. OR MULCH NETTING.

DESIGN BY: R. B. CARTER
DRAWN BY: F. H. KUNZ
CHECKED BY: R. B. CARTER

OWNER / DEVELOPER:
E. L. RAMSBURG
185 HENRYTON ROAD
MARRIOTTVILLE, MARYLAND 21104

PURDUM / JESCHKE
ENGINEERS & LAND SURVEYORS
3697 PARK AVENUE
ELICOTT CITY, MARYLAND

DEPARTMENT OF PUBLIC WORKS:

S. H. Weiland 10/14/71
CHIEF, BUREAU OF HIGHWAYS DATE

OFFICE OF PLANNING AND ZONING

CHIEF ENGINEER, DIVISION OF LAND DEVELOPMENT DATE
AND TRANSPORTATION PLANNING

I CERTIFY THAT ALL DEVELOPMENT AND/OR CONSTRUCTION WILL BE DONE ACCORDING TO THIS PLAN OF DEVELOPMENT AND PLAN OF SILT AND SEDIMENT CONTROL.

E. Ramsburg Sept. 20, 1971
E. L. RAMSBURG Date

"THIS DEVELOPMENT PLAN IS APPROVED FOR SOIL EROSION/SEDIMENT CONTROL BY THE HOWARD CONSERVATION DISTRICT."

REVIEWED: *James M. Helm* 10-4-71
DISTRICT Conservationist Date

APPROVED: *Robert B. Campbell* 10-4-71
Howard Soil Conservation District Date

PLAN & PROFILE: EVERLEA ROAD

SECTION 2

EVERLEA

THIRD ELECTION DISTRICT - HOWARD COUNTY, MARYLAND
JULY 26, 1971

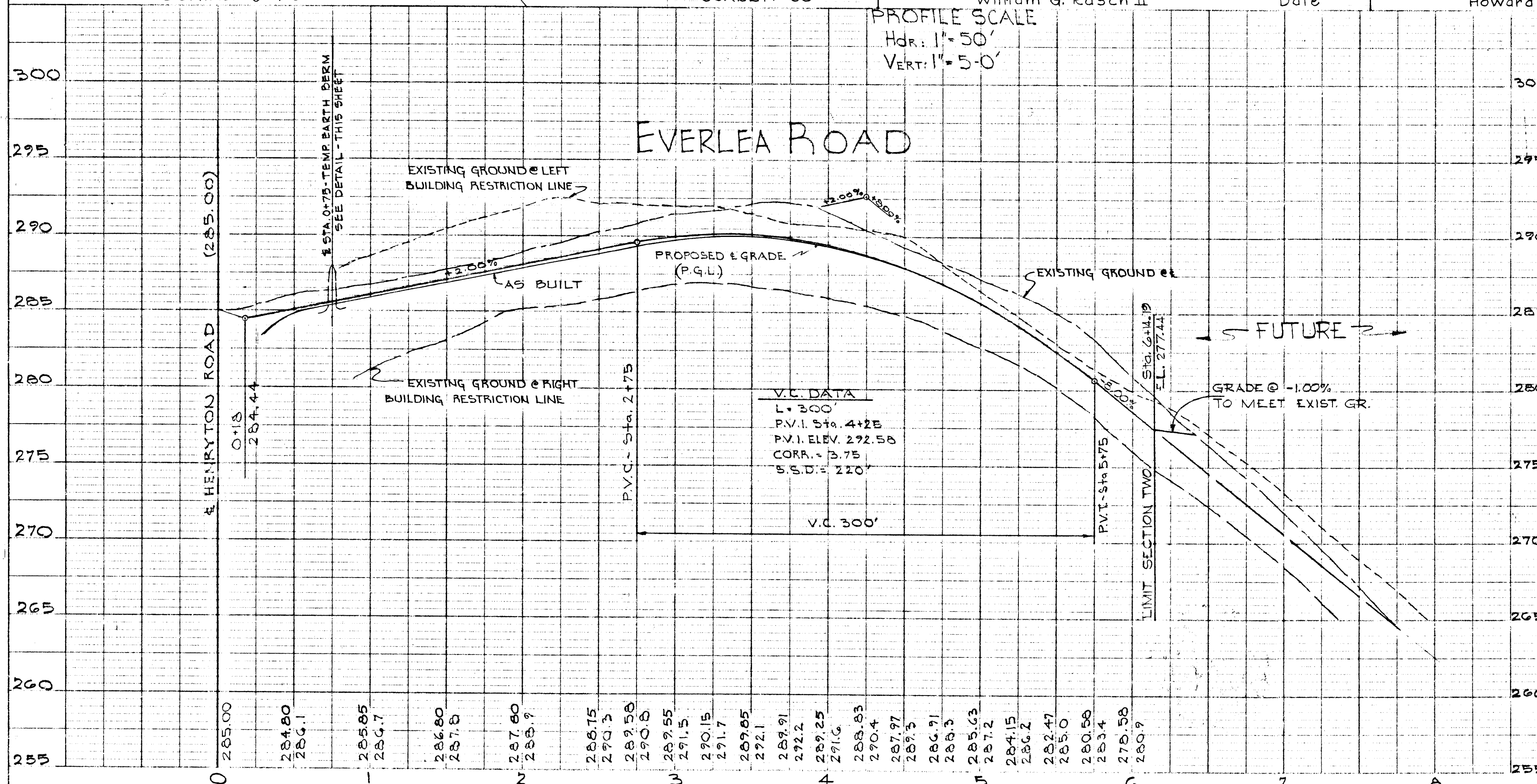
SCALE: AS SHOWN

SHEET 1 OF 1

Aug 31, 1971
DATE

William G. Rasch II
WILLIAM G. RASCH II
REG. NO. 1275

DATE	
BY	
SUPPLIED	
GRADES CHECKED	
NOTE BOOK	
STRUCTURE NOTES AS CHECKED	
NO	



RP 209