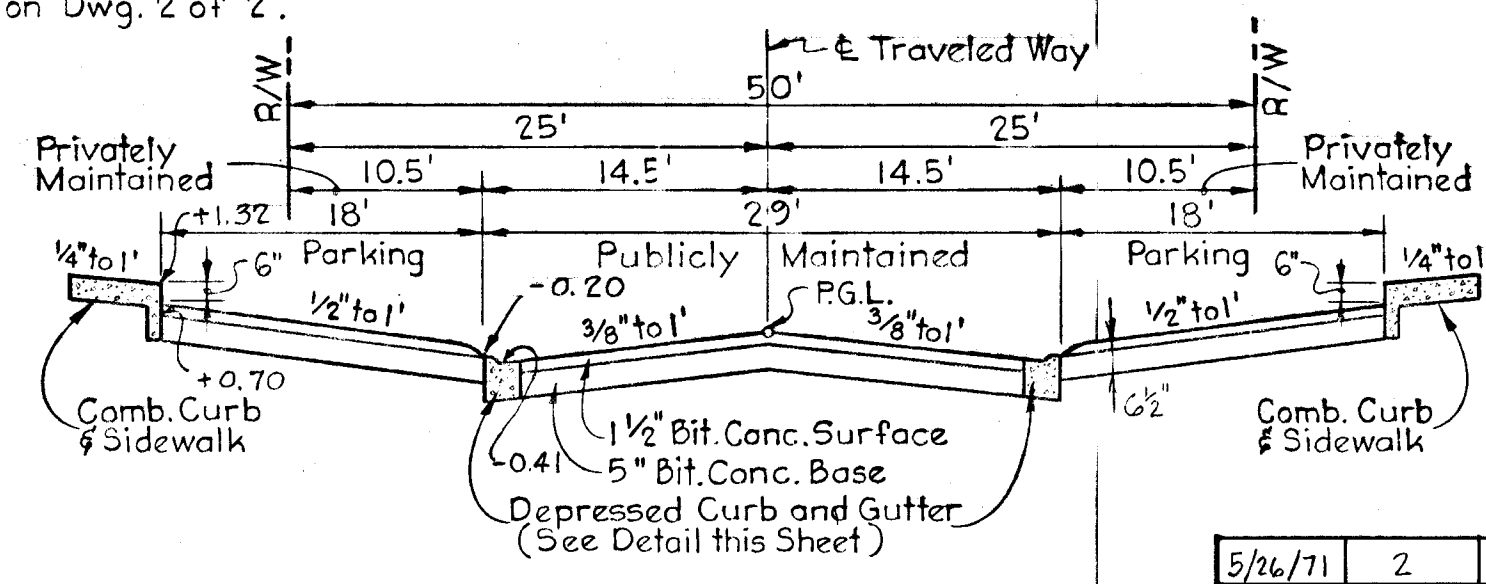
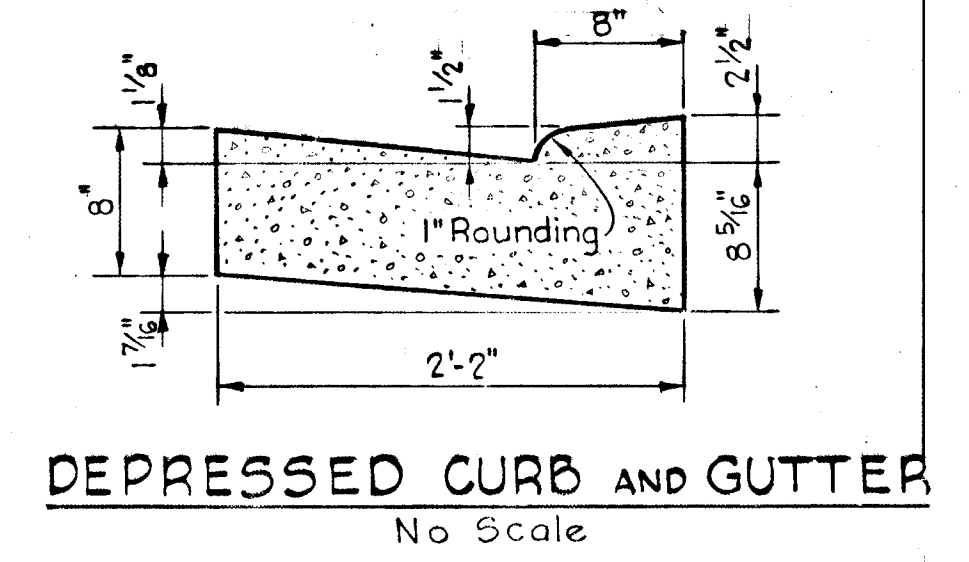


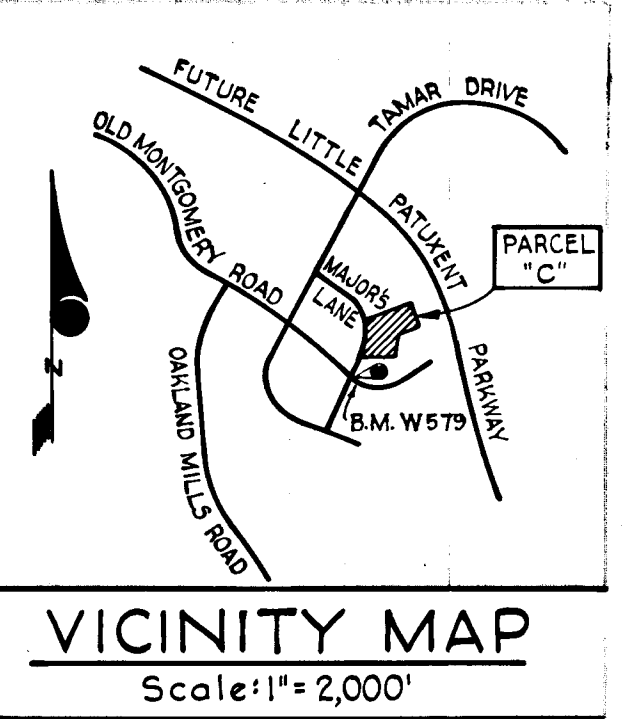
NOTES
 1. Standard 7" Comb. curb and gutter shall be in accordance with County Standard D-40, Page 95.
 2. Paving (6 1/2") shall be in accordance with County Standard D-11, Page 66.
 3. Transition from Standard 7" Comb. curb and gutter to depressed curb and gutter shall be in accordance with detail shown on Dwg. 2 of 2.



**TYPICAL SECTION
 50' R/W - 29' PAVING**
 No Scale



DEPARTMENT OF PUBLIC WORKS
S. M. McKeand 6/22/71
 CHIEF BUREAU OF HIGHWAYS DATE
OFFICE OF PLANNING AND ZONING
John A. Carson 6-17-71
 CHIEF ENGINEER DIVISION OF LAND DEVELOPMENT DATE
 AND TRANSPORTATION PLANNING



Rev. Date	Rev. No.	Revision Description
5/26/71	2	Added Flood Plain Easement Line
5/14/71	1	Miscellaneous Additions

COLUMBIA
 6TH ELECTION DISTRICT
 HOWARD COUNTY, MARYLAND
 OWNER AND DEVELOPER
 HOWARD HOMES, INC.

PROJECT AREA
VILLAGE OF LONG REACH
 SECTION 1, AREA 2
 RESUBDIVISION OF PARCEL "C"

PROJECT TITLE
 PLAN AND PROFILE
 WATCHLIGHT COURT

SCALE: AS SHOWN DATE: MAY 7, 1971

WHITMAN, REQUARDT & ASSOCIATES
 ENGINEERS
 BALTIMORE, MARYLAND 21202

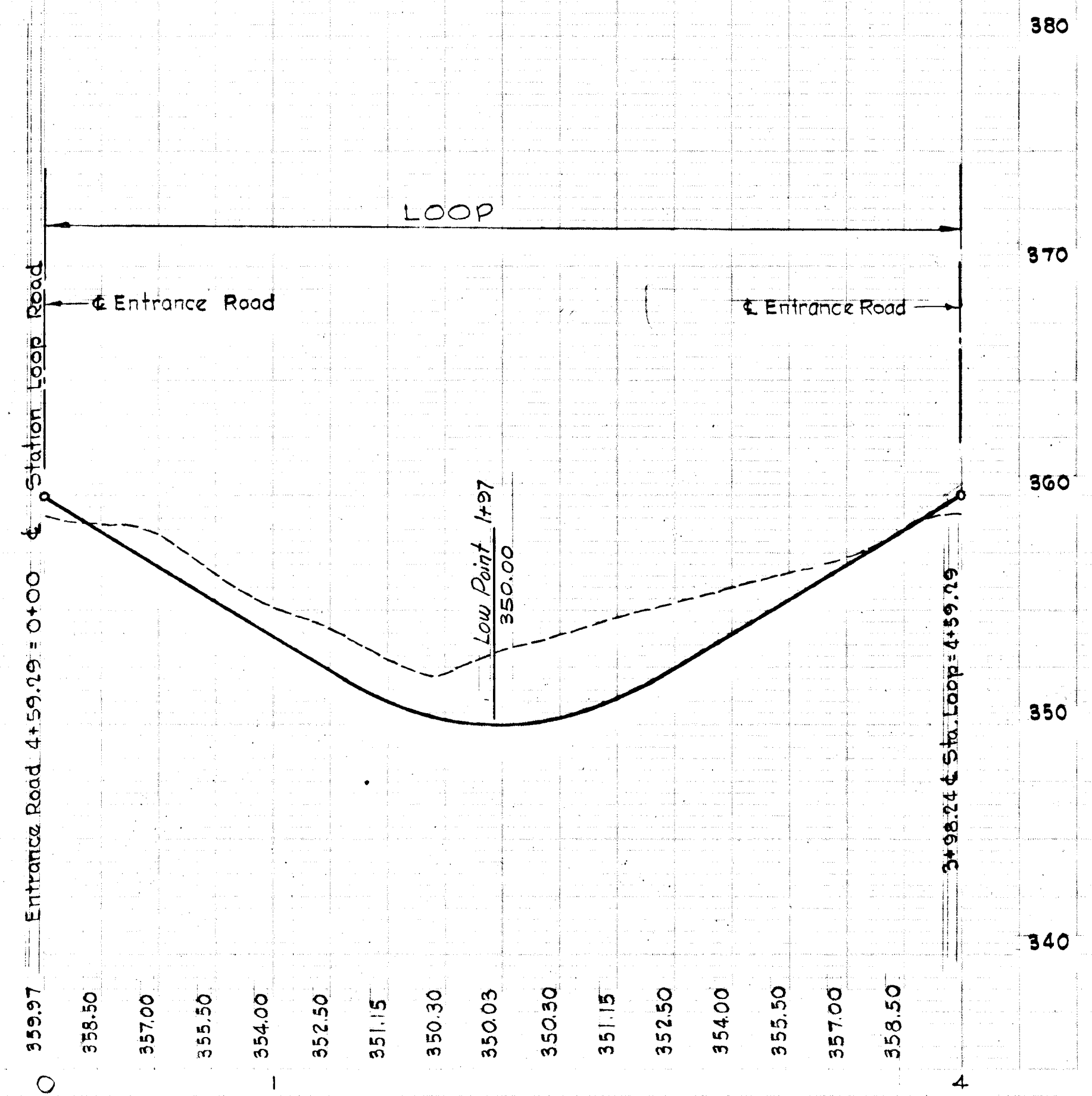
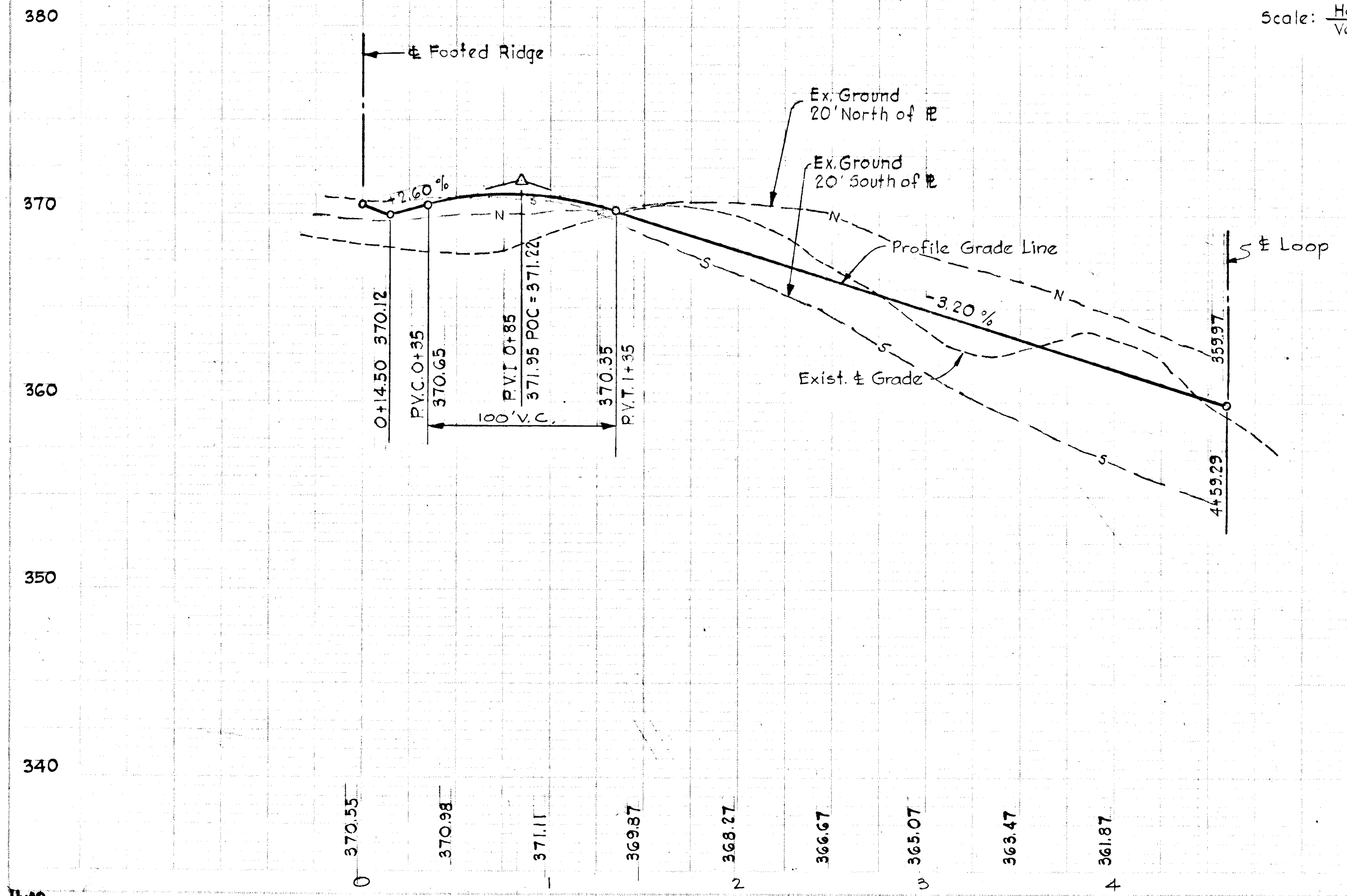
Kenneth A. McCord
 KENNETH A. McCORD
 Registered Engineer
 No. 1974

GENERAL NOTES

- Bench Mark W-579 Elev. 370.07
Iron pipe 92' Right of center line station 9+14 on Major's Lane.
- All work shall be performed in accordance with the Howard Co. Road Construction Code and Standard Specs.
- All utility companies shall be notified 24 hours in advance of construction.
- Secondary residential streets are designed for 25M.P.H. traffic speed in accordance with A.A.S.H.O. Standards.
- All inlets shall be Howard County standards unless otherwise shown.
- Storm drain trenches within road rights-of-way shall be backfilled and compacted in accordance with Howard County Road Code.
- Speed limit for loop portions of streets shall be 15 M.P.H.

WATCHLIGHT COURT

Scale: Hor. 1" = 50'
 Vert. 1" = 5'

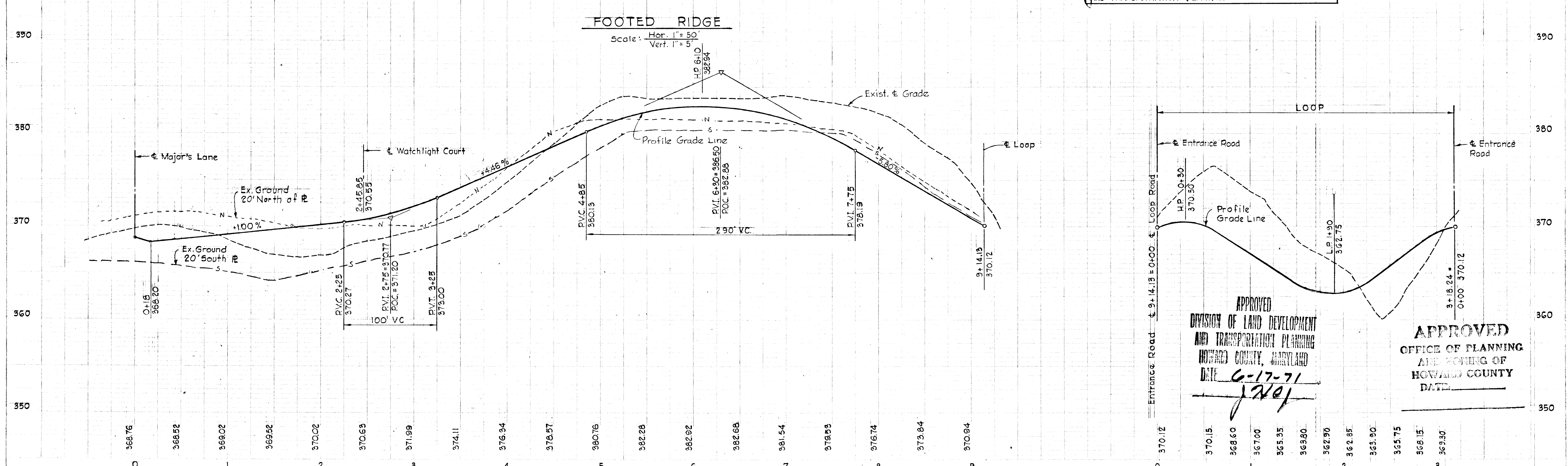
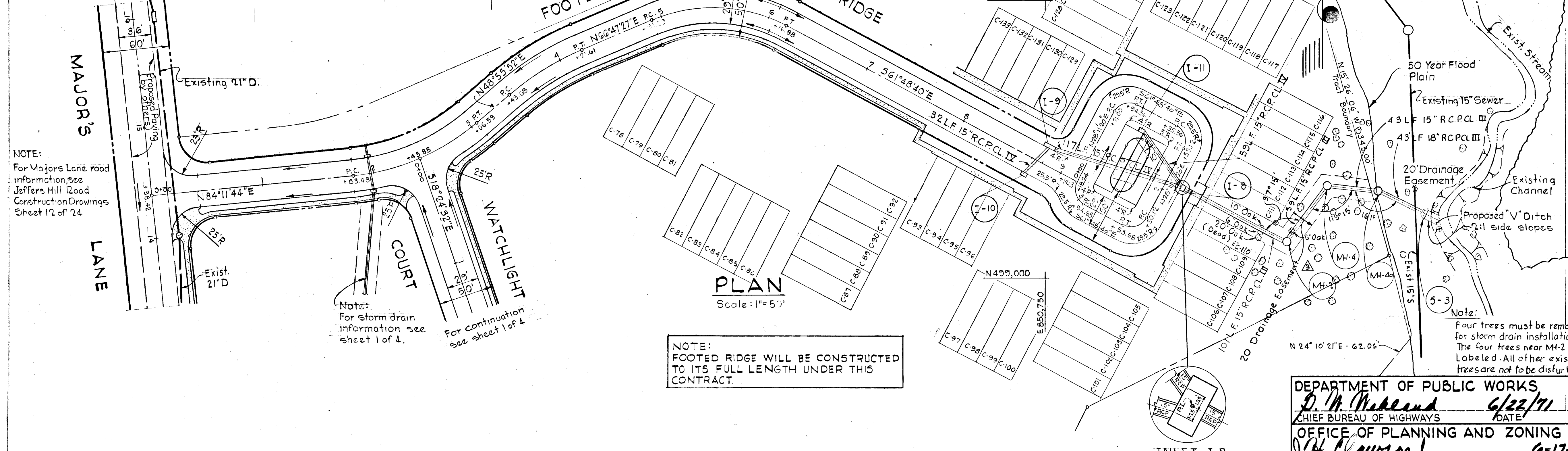


± CURVE DATA

PC 1+83.43 to PI 2+45.85	AND PI 2+45.85 to PT 3+06.53	AND PC 3+43.68 to PT 4+21.61	AND PC 4+91.29 to PT 6+16.88
Δ = 17°52'51"	Δ = 17°23'01"	Δ = 17°51'36"	Δ = 51°23'53"
R = 200.00'	R = 200.00'	R = 250.00'	R = 140.00'
Arc. = 62.42'	Arc. = 60.68'	Arc. = 77.93'	Arc. = 125.59'
T = 31.46'	T = 30.58'	T = 33.28'	T = 67.37'
Ch. = 62.16'	Ch. = 60.45'	Ch. = 77.61'	Ch. = 121.42'
Ch. Brg. = N75°15'11"E	Ch. Brg. = N57°37'23"E	Ch. Brg. = N57°51'40"E	Ch. Brg. = S87°30'36"E

± CURVE DATA FOR LOOP

Δ = 90°00'00"
R = 15.00'
Arc. = 23.56'
T = 15'00"
Ch. = 21.21'
Ch. Brg. = N 73°11'20"E or S 16°48'40"E



CURB AND GUTTER TRANSITION DETAIL

6-30-71	3	No Scale
5/26/71	2	Revised Drain - T-8 to S-3
5/14/71	1	Added Flood Plain Easement Line
RevDate	Rev.No.	Revision Description

COLUMBIA
6TH ELECTION DISTRICT
HOWARD COUNTY, MARYLAND
OWNER AND DEVELOPER
HOWARD HOMES, INC.

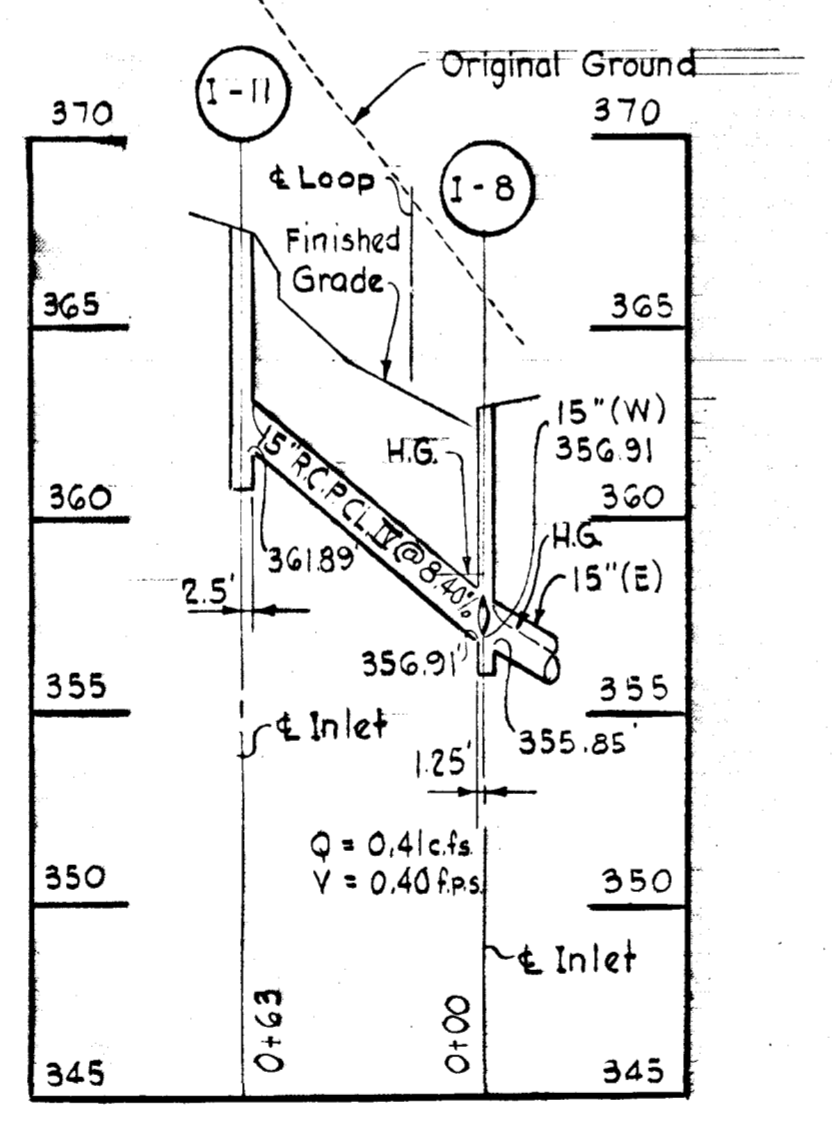
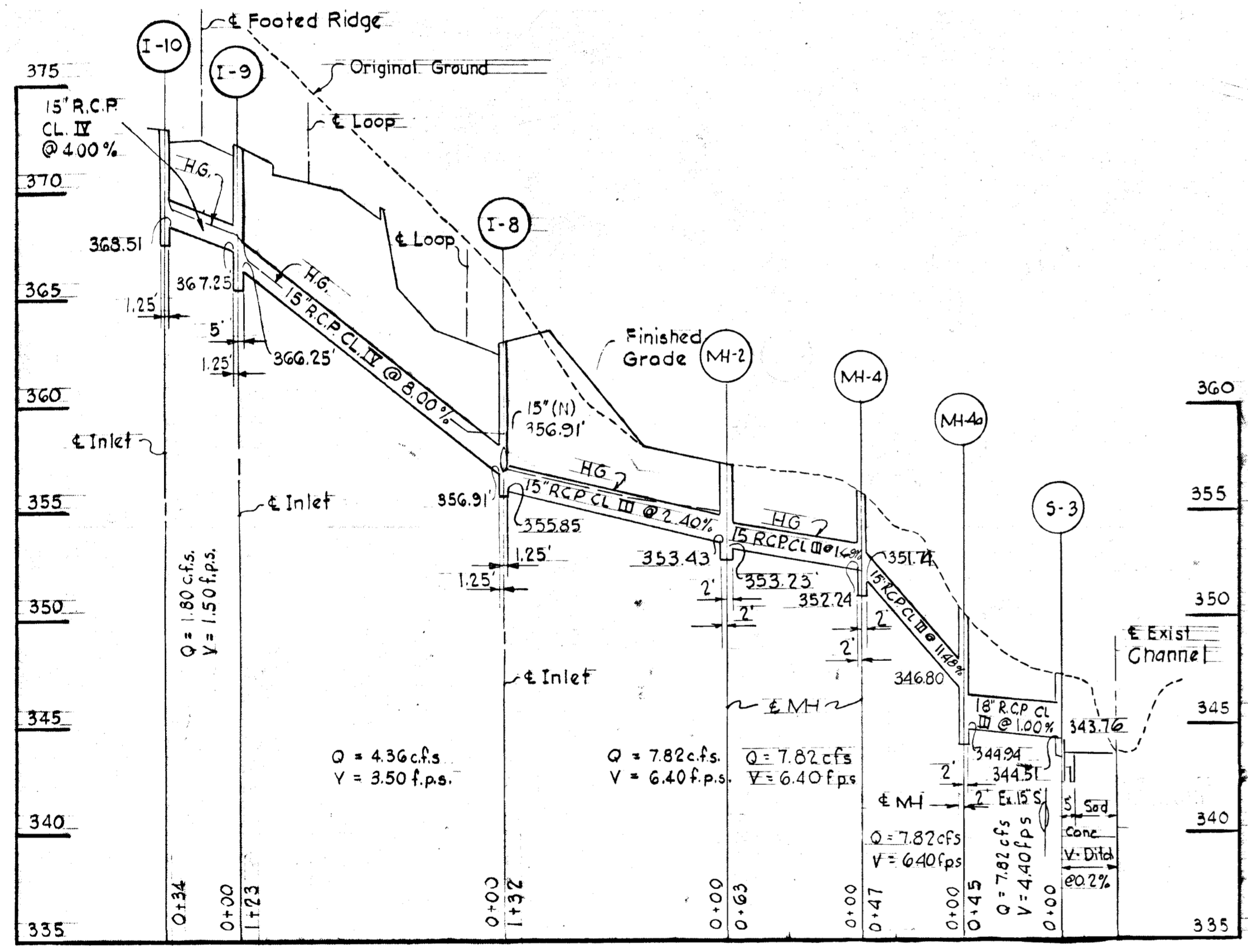
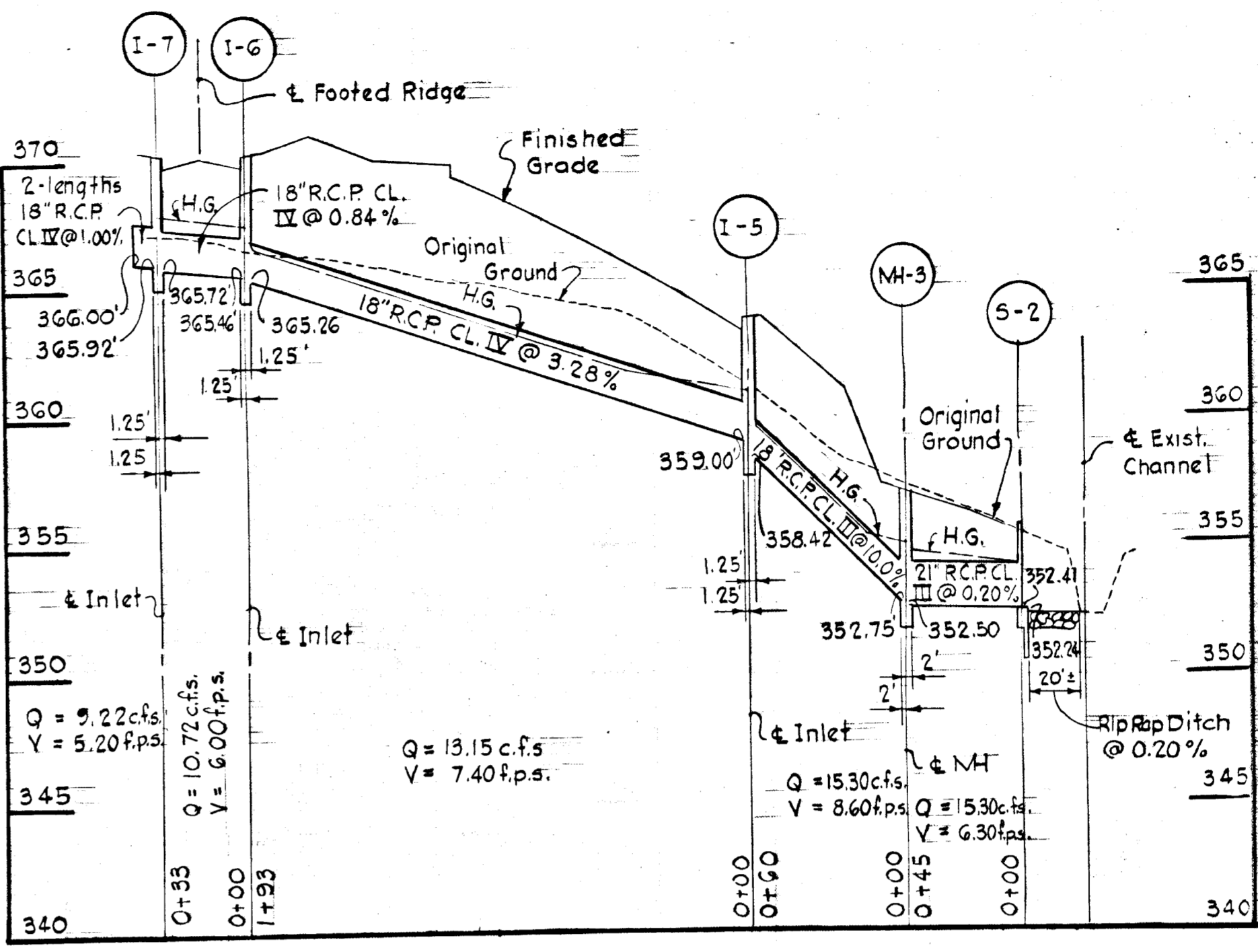
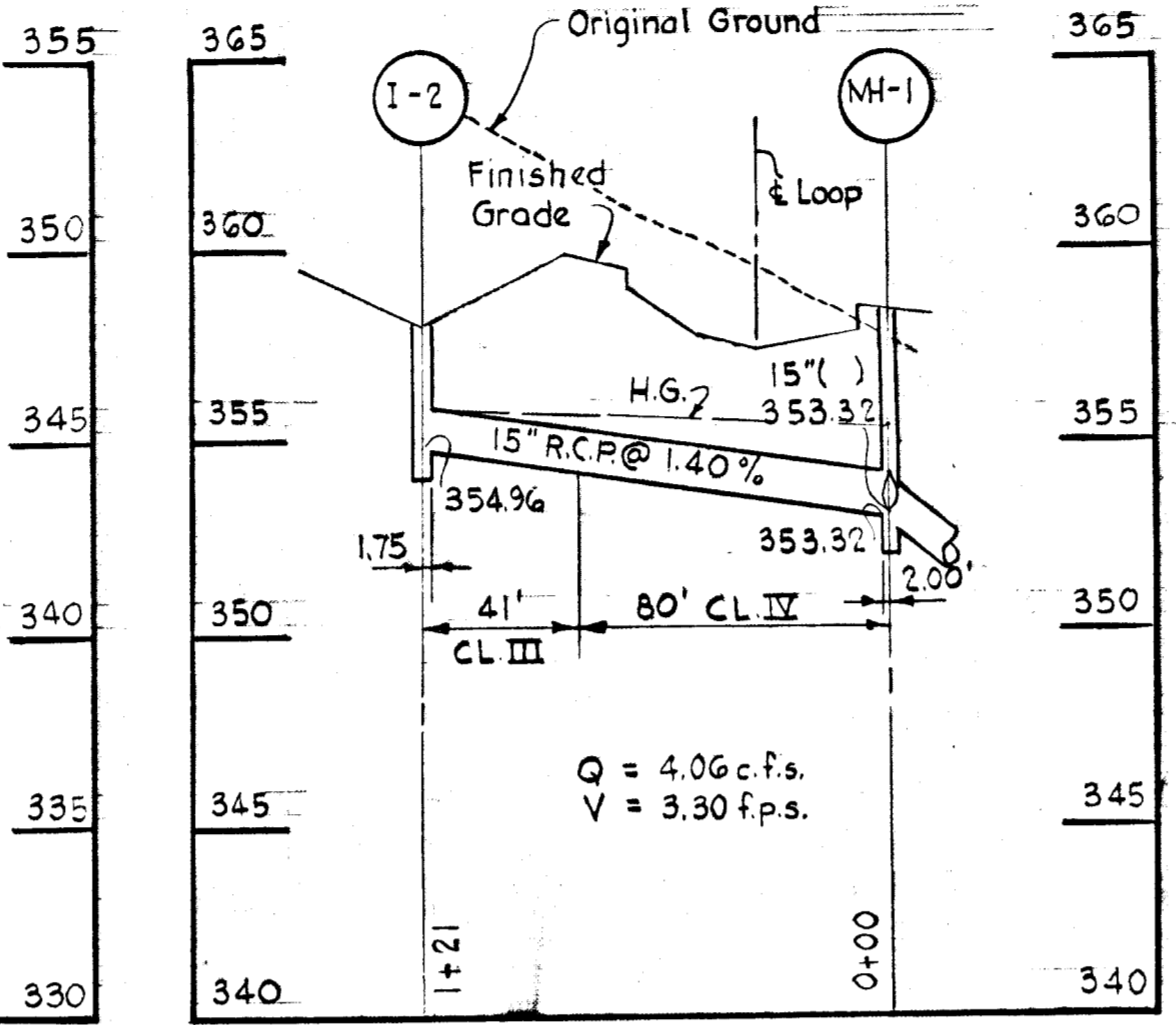
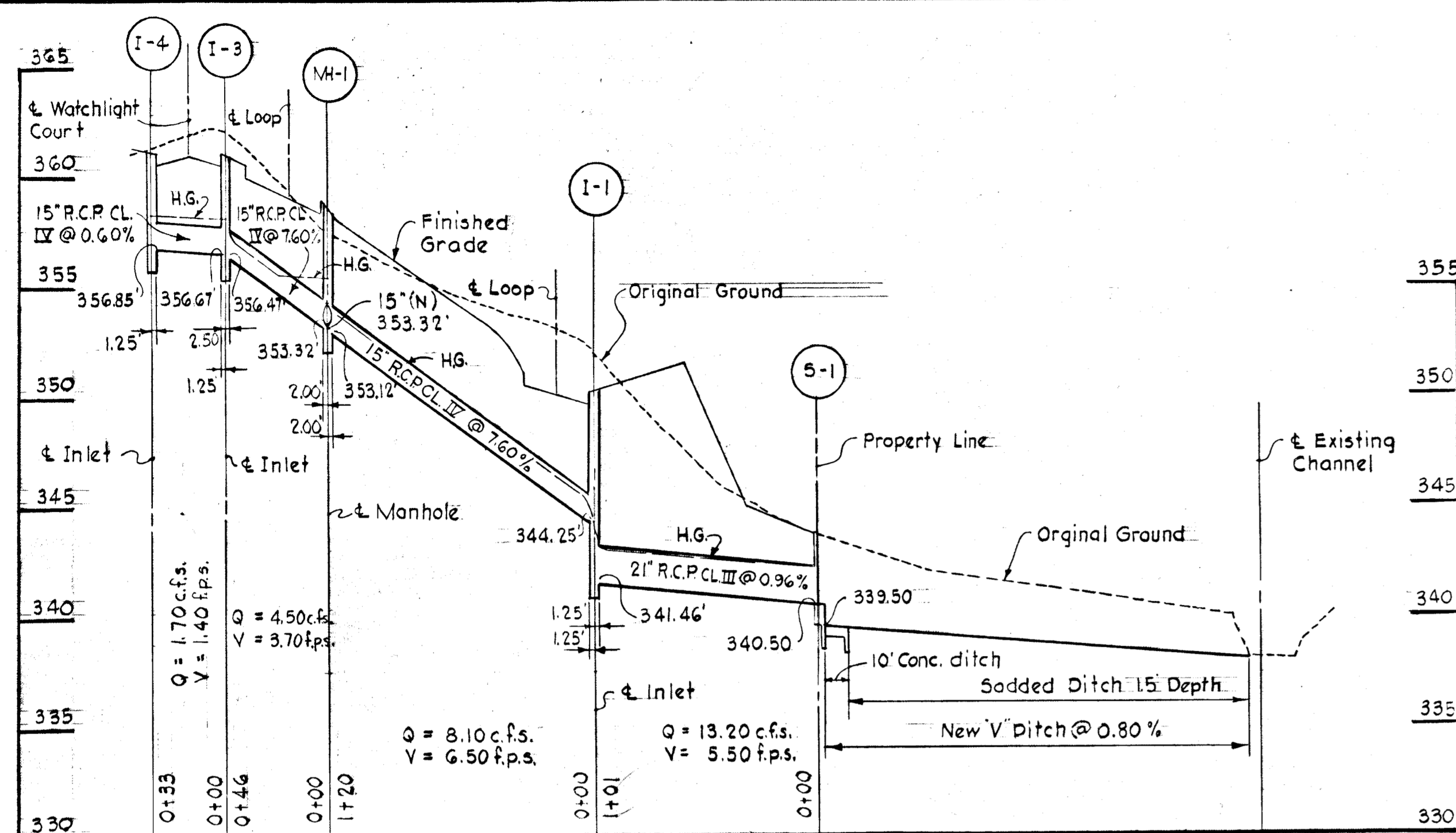
PROJECT AREA
VILLAGE OF LONG REACH
SECTION 1, AREA 2
RESUBDIVISION OF PARCEL "C"

PROJECT TITLE
PLAN AND PROFILE
FOOTED RIDGE

SCALE: AS SHOWN DATE: May 5, 1971

WHITMAN, REQUARDT & ASSOCIATES
ENGINEERS
BALTIMORE, MARYLAND 21202

Kenneth A. McCord
KENNETH A. McCORD
Registered Engineer
No. 1974



APPROVED
 DIVISION OF LAND DEVELOPMENT
 AND TRANSPORTATION PLANNING
 HOWARD COUNTY, MARYLAND
 DATE: 6-17-71
J. H. [Signature]

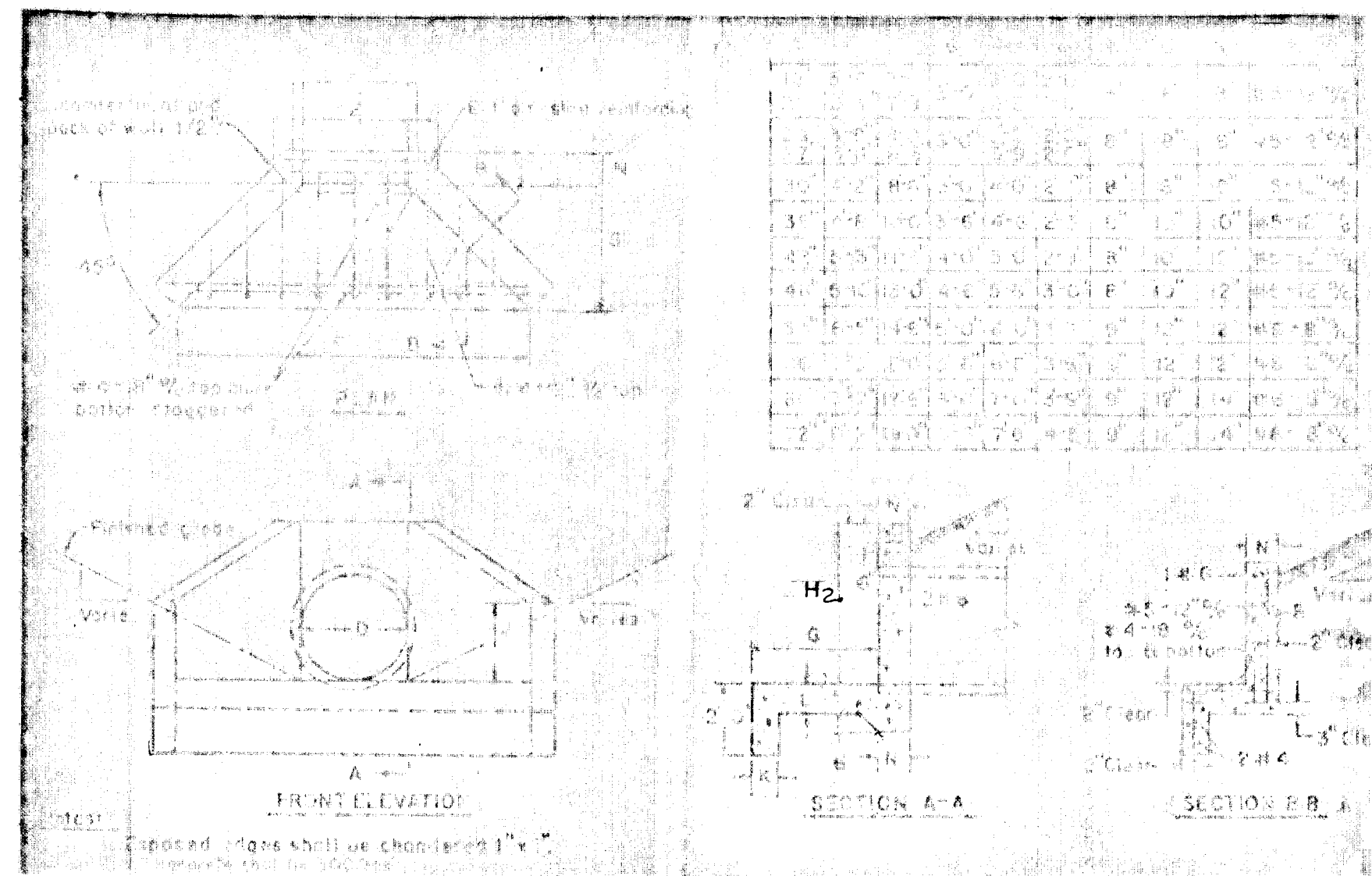
APPROVED
 OFFICE OF PLANNING
 AND ZONING OF
 HOWARD COUNTY
 DATE: _____

Rev. No.	Rev. Date	Revision Description
1	5/26/71	Misc. Additions
COLUMBIA 6TH ELECTION DISTRICT HOWARD COUNTY, MARYLAND OWNER AND DEVELOPER HOWARD RESEARCH AND DEVELOPMENT CORP.		
PROJECT AREA VILLAGE OF LONG REACH SECTION 1, AREA 2 RESUBDIVISION OF PARCEL "C"		
PROJECT TITLE STORM DRAINS - PROFILES AND DETAILS		
SCALE: As Shown		DATE: May 5, 1971
WHITMAN, REQUARDT & ASSOCIATES ENGINEERS BALTIMORE, MARYLAND 21202		
DEPARTMENT OF PUBLIC WORKS <i>B. H. Hebard</i> CHIEF BUREAU OF HIGHWAYS DATE: 6/22/71		<i>Kenneth A. McCord</i> KENNETH A. McCORD Registered Engineer No. 1974

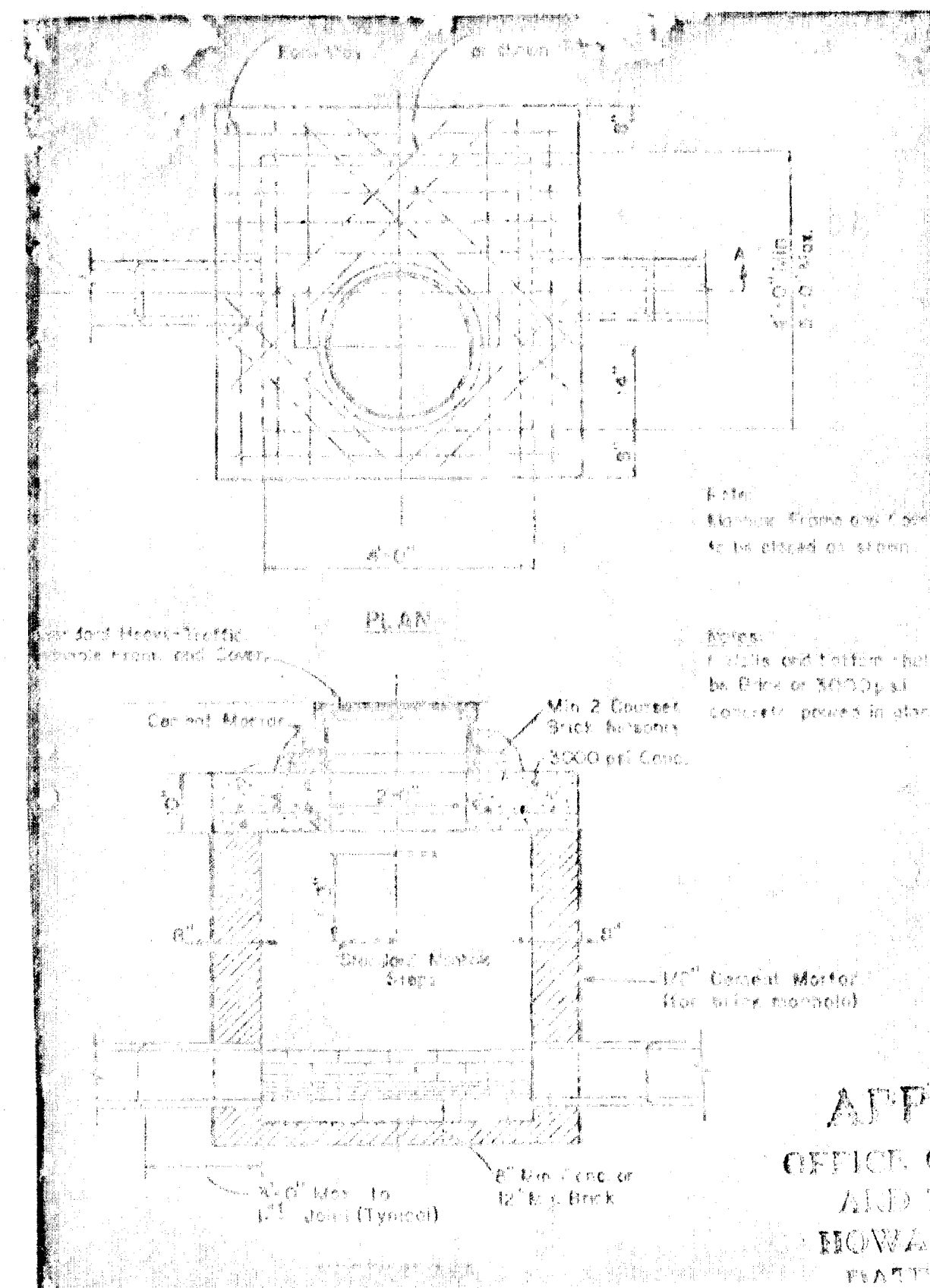
PROFILES
 Scale: Hor 1" = 50'
 Ver 1" = 5'

DEPARTMENT OF PUBLIC WORKS
B. H. Hebard
 CHIEF BUREAU OF HIGHWAYS
 DATE: 6/22/71
J. H. [Signature]
 CHIEF ENGINEER, DIVISION OF LAND DEVELOPMENT
 AND TRANSPORTATION PLANNING
 DATE: 6-17-71

STORM DRAIN STRUCTURE SCHEDULE					
No.	Type	Top Elev.	Invert	Location	
I-1	A-5" Inlet width = 2'-6"	350.70	341.46	± Inlet 15.75' left of ± Loop sta. 1+97	
I-2	Spec. K Inlet See Detail This Sheet	358.00	354.96	± Inlet 124' left of ± sta. 4+19	
I-3	A-5" Inlet width = 2'-6"	361.07	356.47	± Inlet 15.75' left of ± sta. 4+30.78	
I-4	A-5" Inlet width = 2'-6"	361.07	356.85	± Inlet 15.75' right of ± sta. 4+30.78	
I-5	A-5" Inlet width = 2'-6"	363.75	358.42	See Plan and Profile	
I-6	A-5" Inlet width = 2'-6"	370.19	365.26	± Inlet 15.75' right of ± sta. 2+00	
I-7	A-5" Inlet width = 2'-6"	370.19	365.72	± Inlet 15.75' left of ± sta. 2+00	
I-8	A-5" Inlet width = 2'-6"	372.23	355.89	± Inlet 15.75' left of ± Loop sta. 1+89.50	
I-9	A-10" Inlet width = 2'-6"	372.24	366.23	± Inlet 15.75' left of ± sta. 8+81	
I-10	A-5" Inlet width = 2'-6"	372.85	368.51	± Inlet 15.75' right of ± sta. 8+70.50	
MH-1	Standard Manhole	358.50	353.12	± MH 17.50' right of ± Loop sta. 0+18	
MH-2	B MH See Detail This Sheet	Grade	353.23	± MH 119.75' left of ± Loop sta. 1+89.50	
MH-3	B MH See Detail This Sheet	Grade	357.00	See Plan and Profile	
MH-4	B MH See Detail This Sheet	Grade	351.74	See Plan and Profile	
S-1	Special EW see detail this sheet	343.75	340.50	Face of EW 11700' left of ± Loop sta. 1+97	
S-2	Special EW see detail this sheet	355.66	352.41	See Plan and Profile	
S-3	Special EW see detail this sheet	347.51	344.51	See Plan and Profile	
I-11	A-5" Inlet width = 2'-6"	367.65	361.89	± Inlet 30' right of ± Loop sta. 0+66.75	
MH-4a	B MH See Detail This Sheet	Grade	344.94	See Plan and Profile	

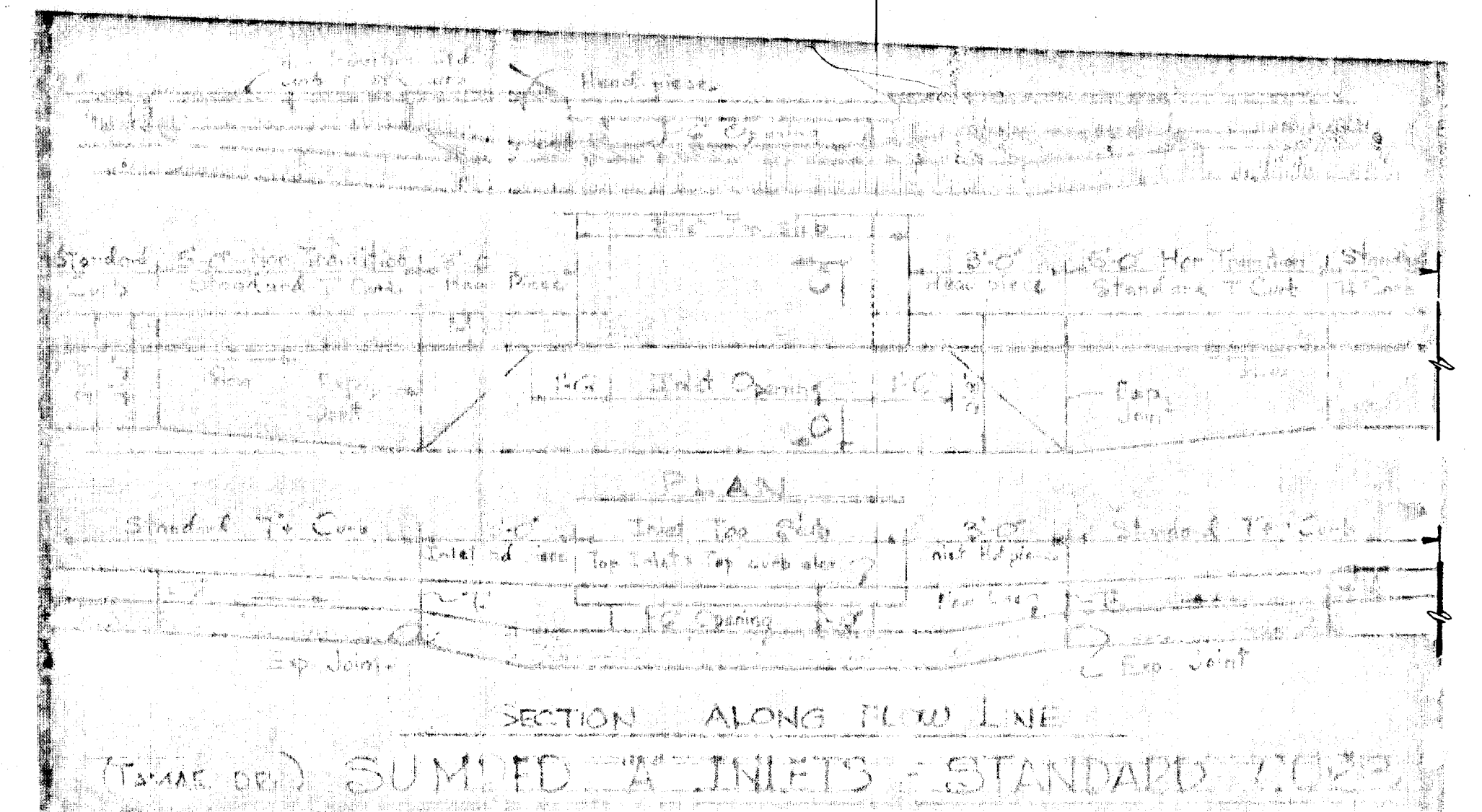


SPECIAL ENDWALL S-1, 2 & 3
No Scale



8" MANHOLE MH-3
No Scale

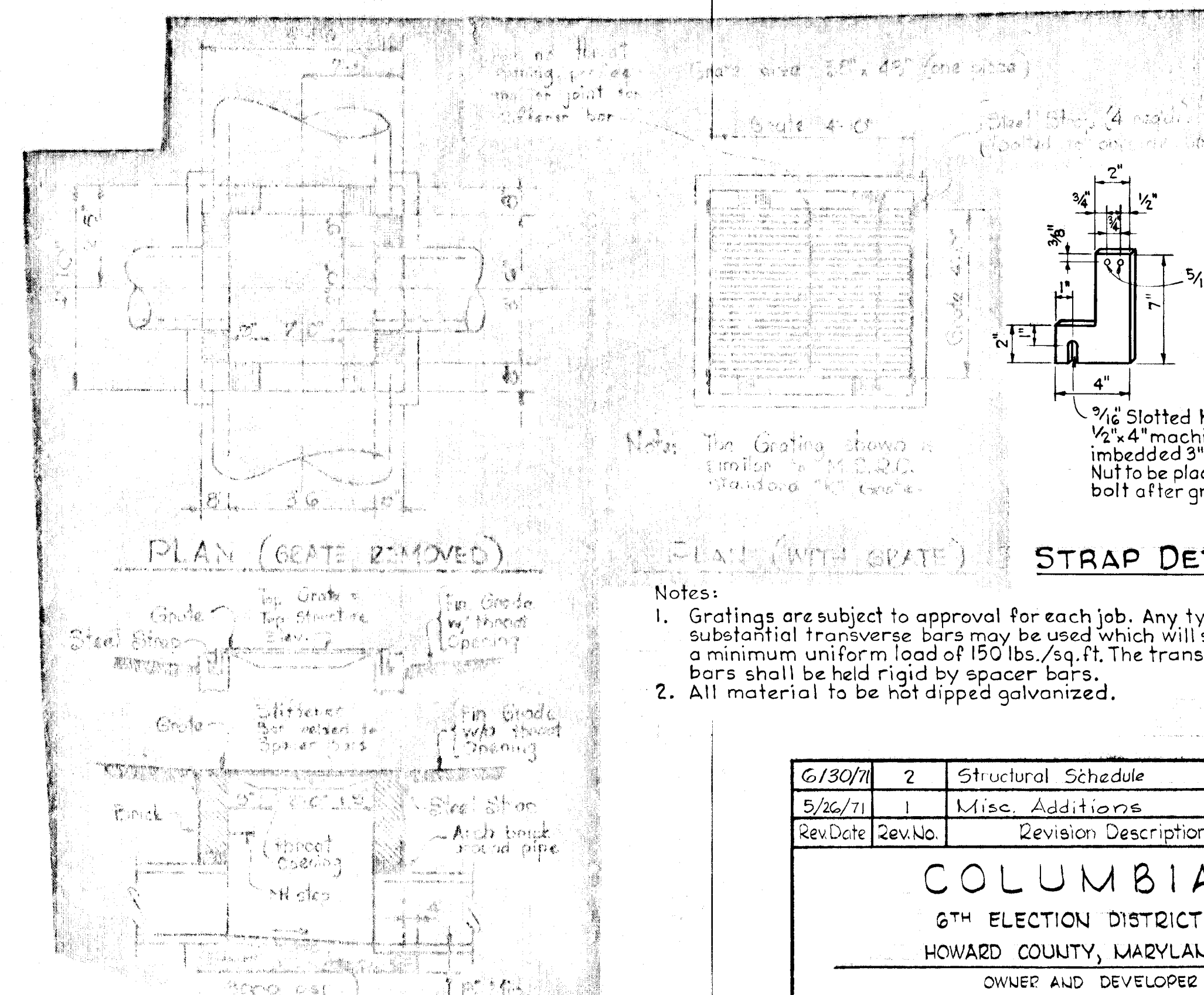
APPROVED
OFFICE OF PLANNING
AND ZONING OF
HOWARD COUNTY
PLANNING



MODIFIED "K" INLET
Scale: 3/8"=1'-0"

APPROVED
DIVISION OF LAND DEVELOPMENT
AND TRANSPORTATION PLANNING
HOWARD COUNTY, MARYLAND
DATE: 6-17-71
J. H. [Signature]

DEPARTMENT OF PUBLIC WORKS
5 M. [Signature] 6/22/71
CHIEF BUREAU OF HIGHWAYS
OFFICE OF PLANNING AND ZONING
J. H. [Signature] 6-17-71
CHIEF ENGINEER, DIVISION OF LAND DEVELOPMENT AND TRANSPORTATION PLANNING



STRAP DETAIL

Notes:
1. Gratings are subject to approval for each job. Any type of substantial transverse bars may be used which will support a minimum uniform load of 150 lbs./sq. ft. The transverse bars shall be held rigid by spacer bars.
2. All material to be hot dipped galvanized.

Rev. No.	Rev. Date	Revision Description
2	6/30/71	Structural Schedule
1	5/26/71	Misc. Additions

COLUMBIA
6TH ELECTION DISTRICT
HOWARD COUNTY, MARYLAND
OWNER AND DEVELOPER
HOWARD RESEARCH AND DEVELOPMENT CORP.

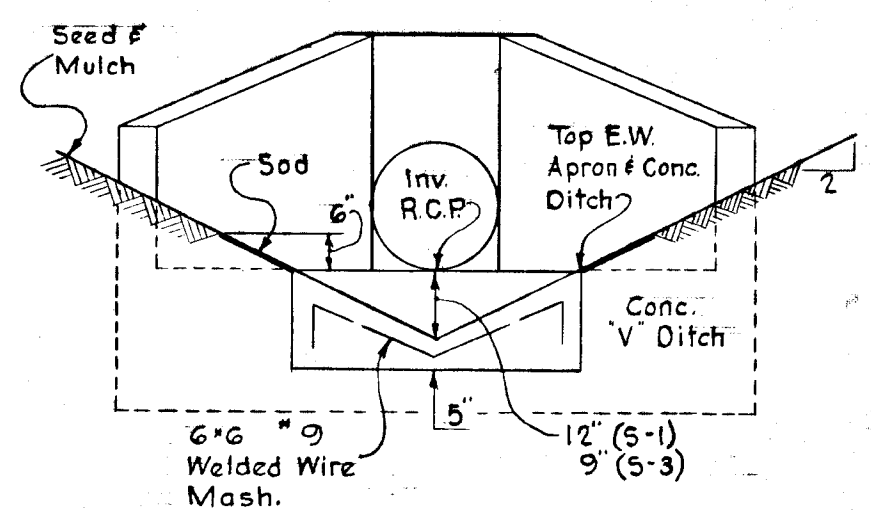
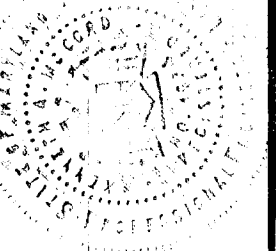
PROJECT AREA
VILLAGE OF LONG REACH
SECTION 1, AREA 2
RESUBDIVISION OF PARCEL "C"

PROJECT TITLE
STORM DRAIN DETAILS

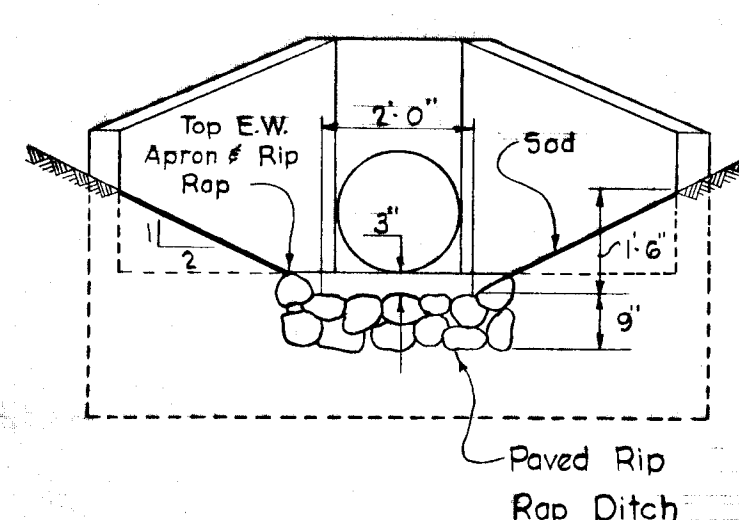
SCALE: As Shown DATE: May 5, 1971

WHITMAN, REQUARDT & ASSOCIATES
ENGINEERS
BALTIMORE, MARYLAND 21202

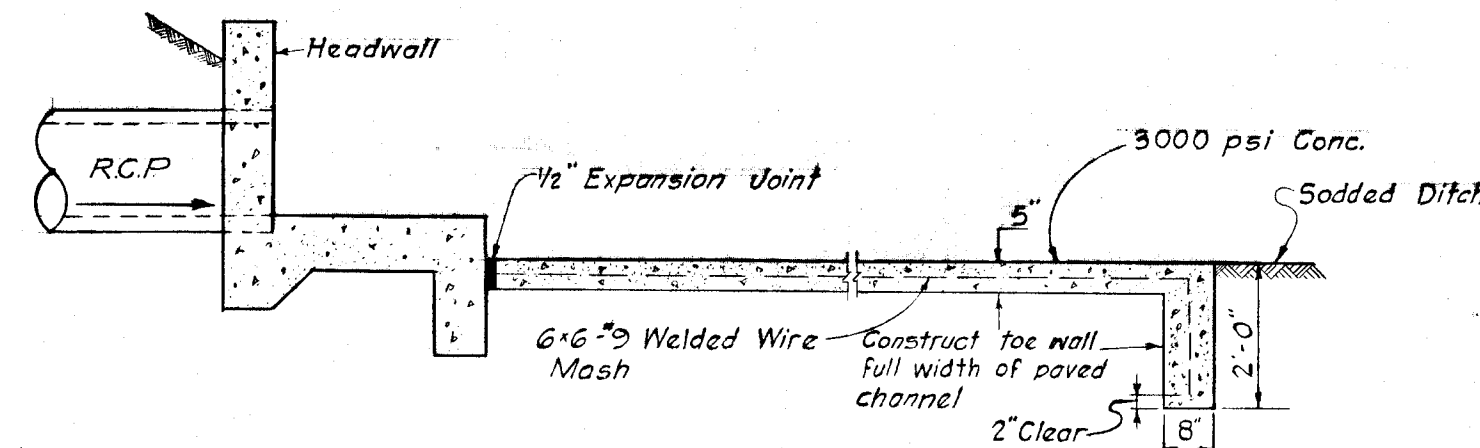
REGISTERED ENGINEER
KENNETH A. MCCORD
No. 1974



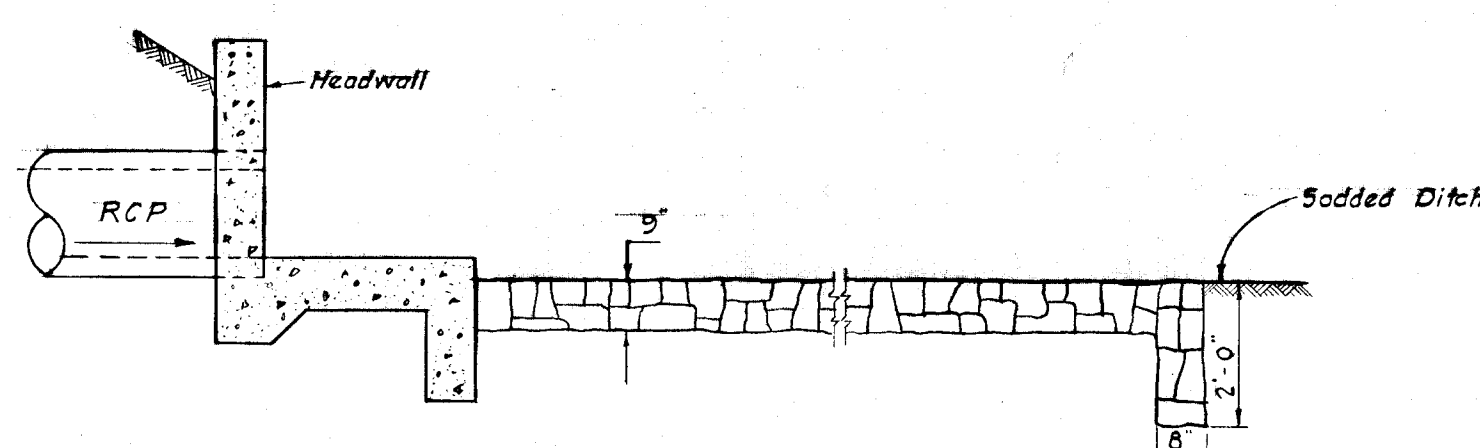
CONC. DITCH @ ENDWALL S-1 S-3



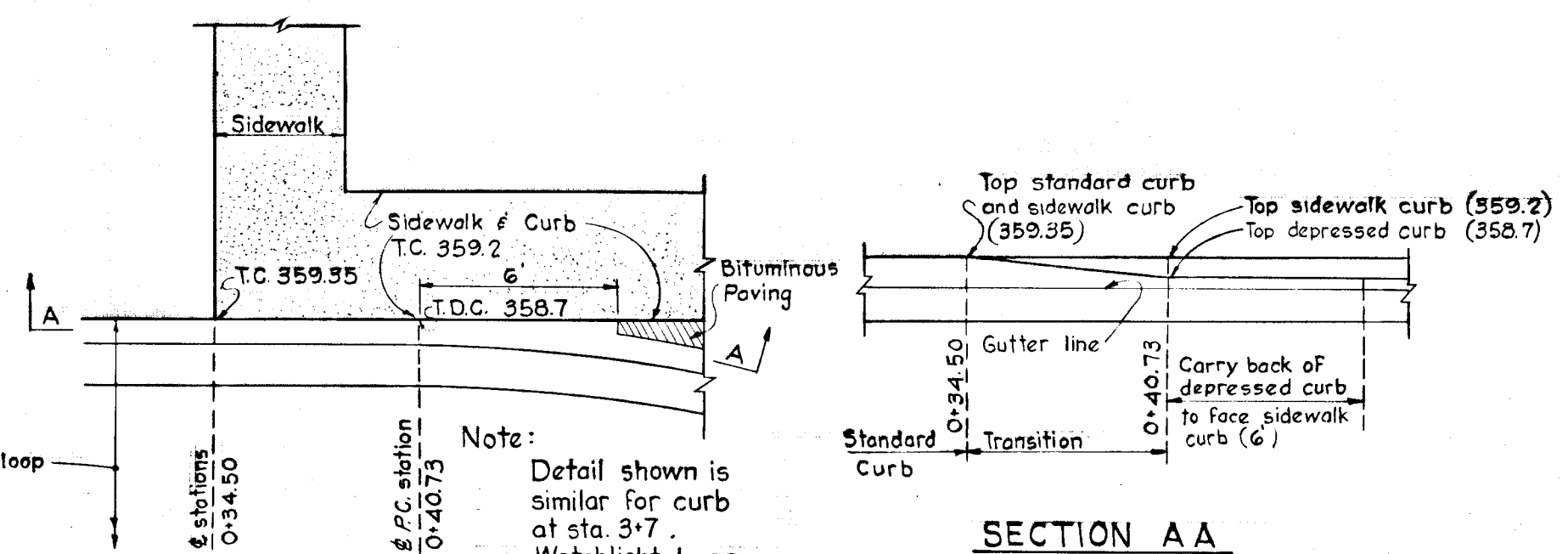
RIP RAP DITCH @ ENDWALL S-2



DETAIL CONCRETE DITCH
No Scale



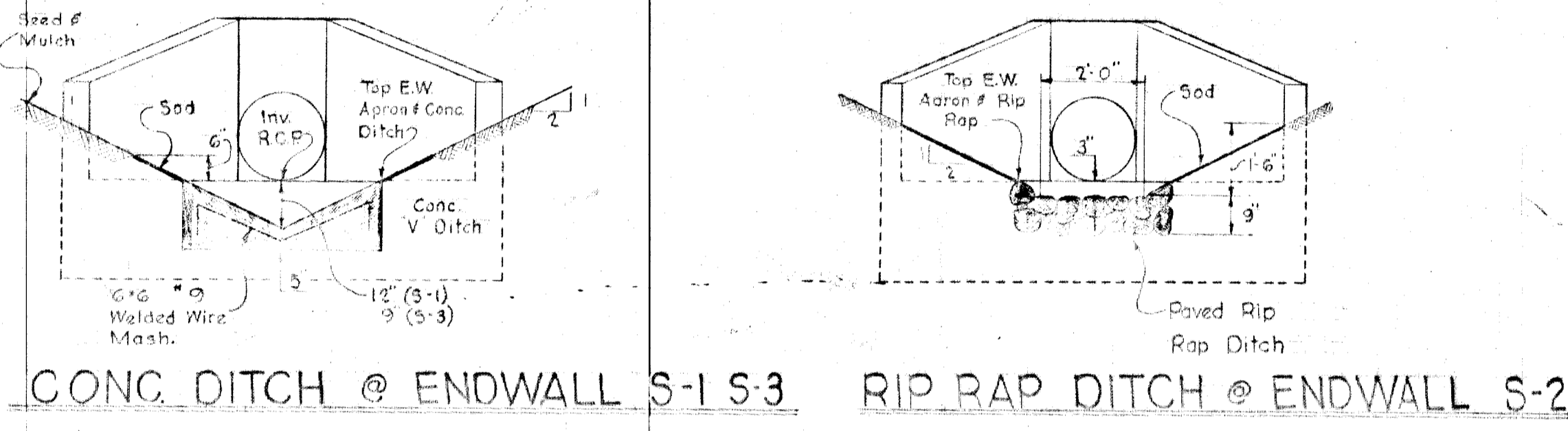
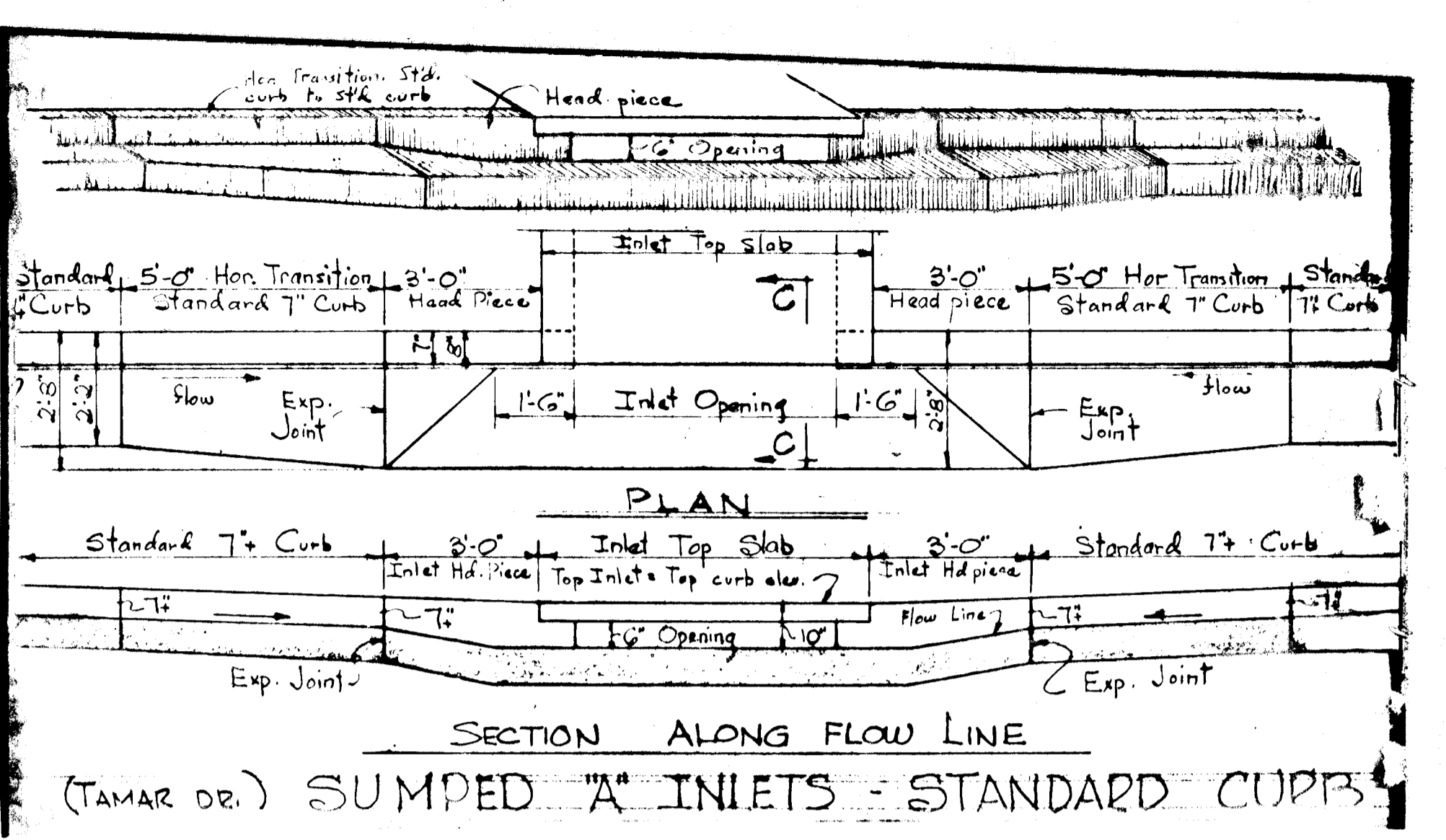
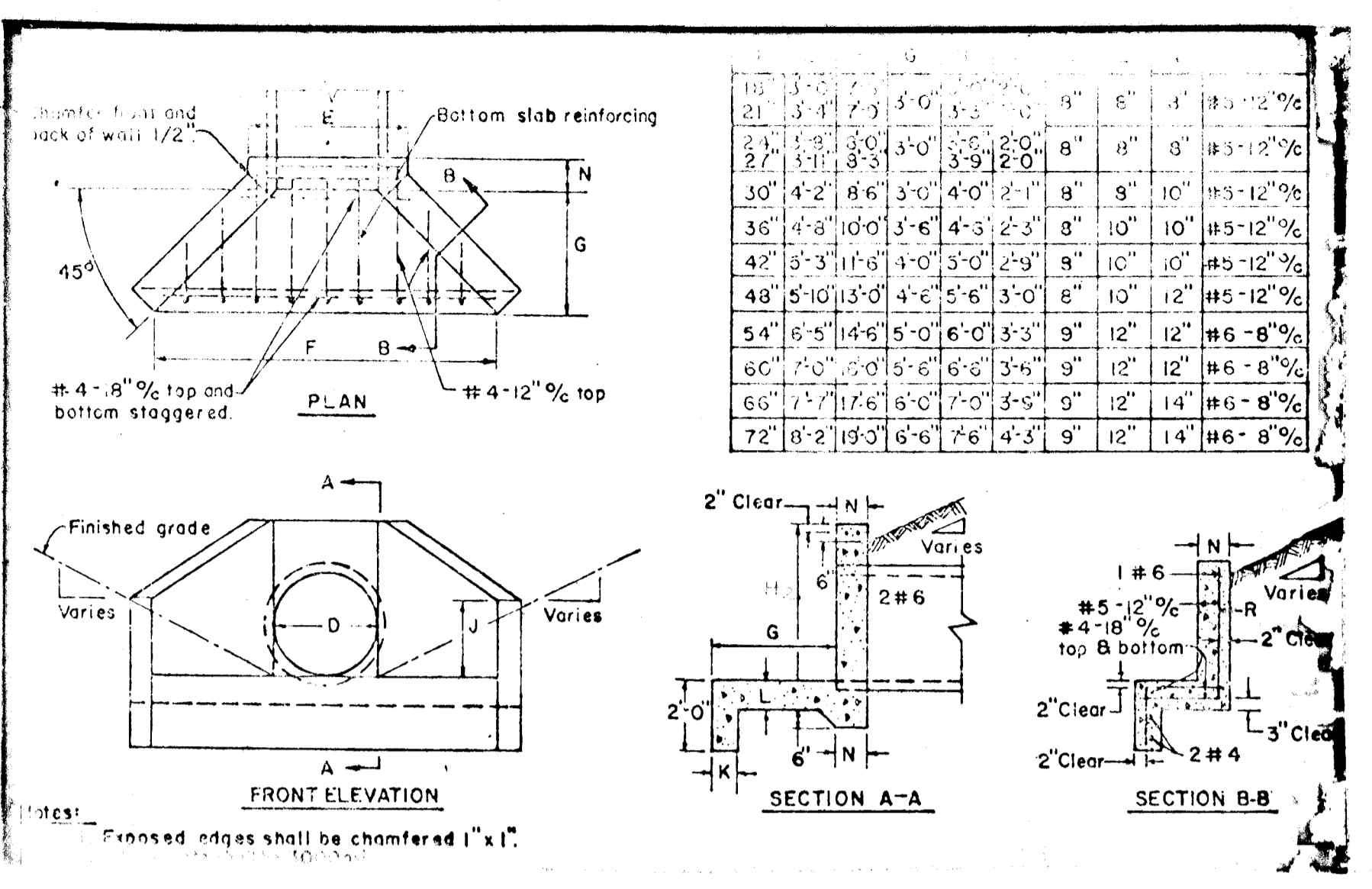
RIP RAP DITCH
No Scale



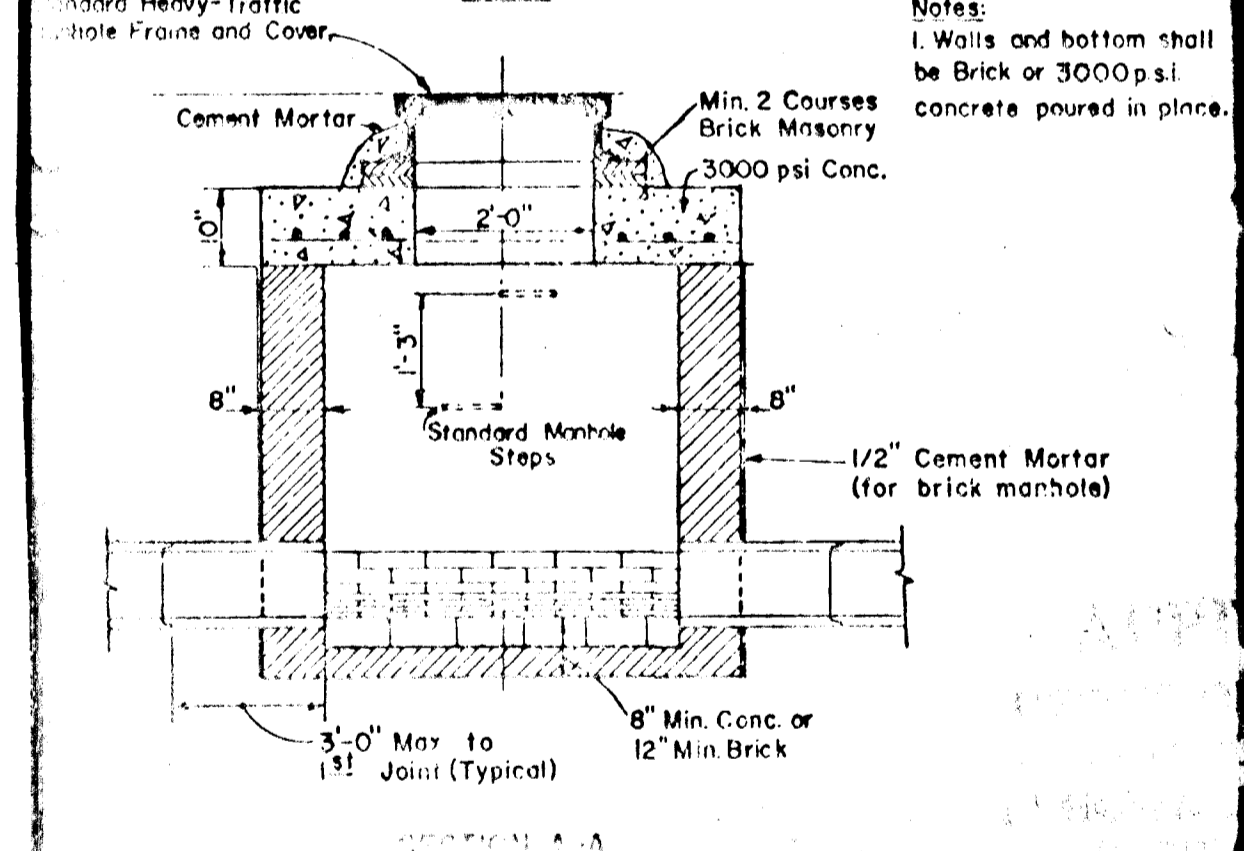
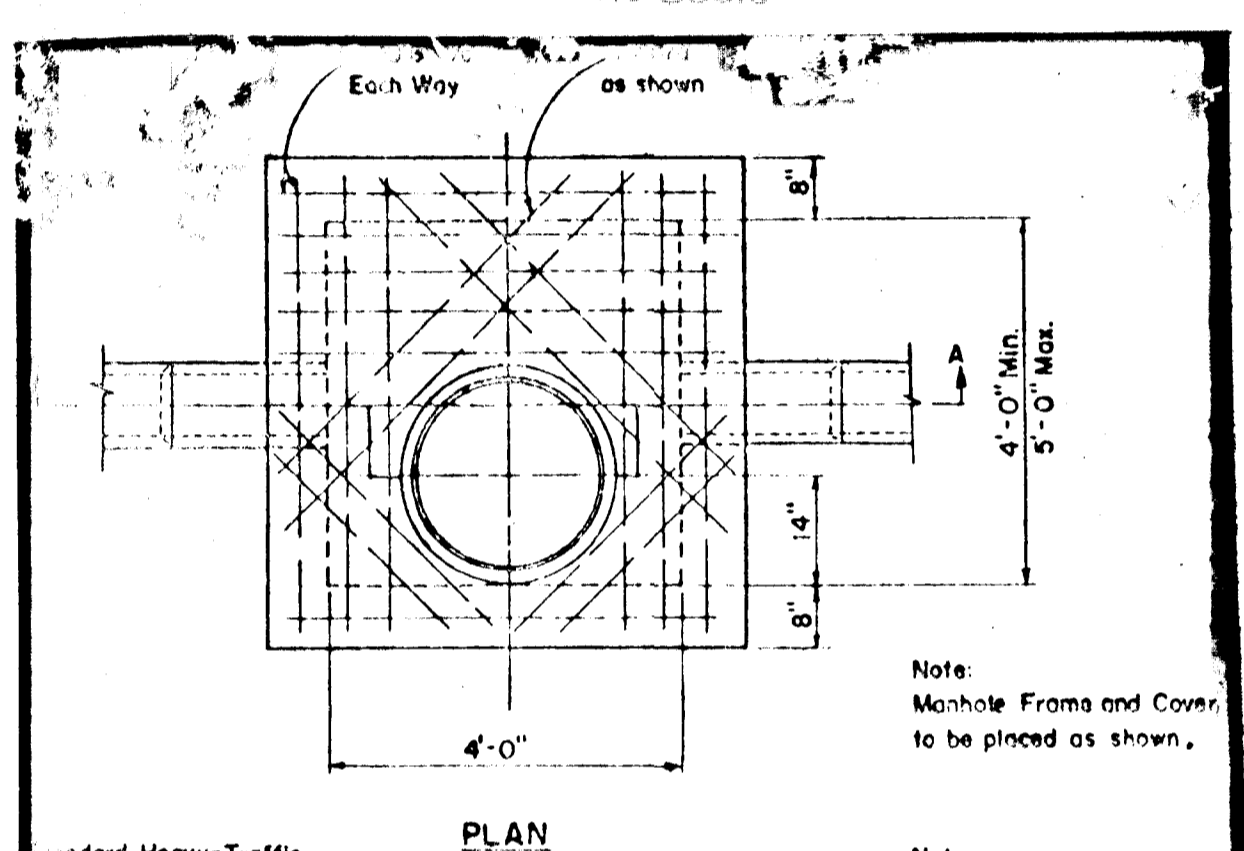
CURB & GUTTER DETAIL
No Scale

Note:
Detail shown is similar for curb at sta. 3+7. Watchlight Loop.

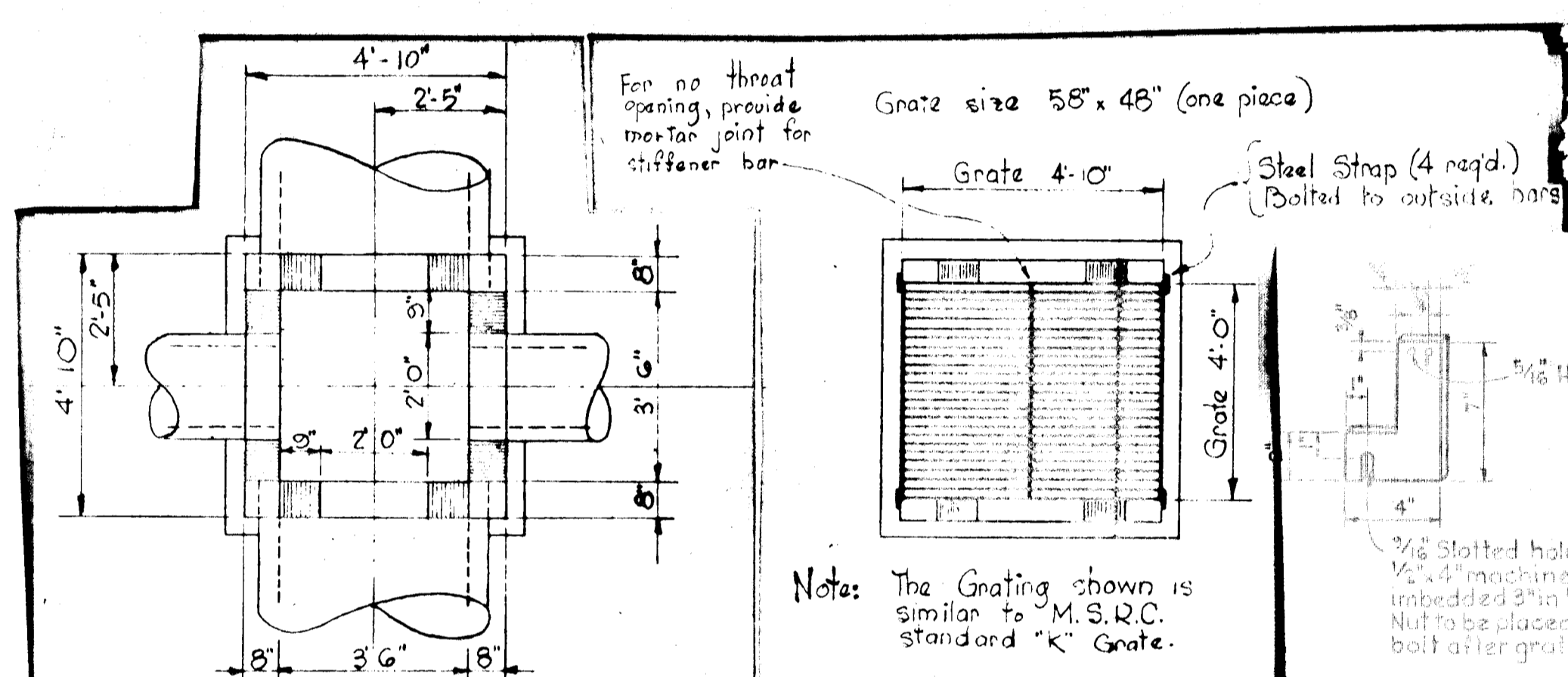
STORM DRAIN STRUCTURE SCHEDULE			
No.	Type	Location	Notes
1-1	A-5 Inlet width = 2'-6"	15.75 left of Loop sta 1+37	
1-2	Spec. Inlet See Detail	124' left of sta. 4+19	
1-3	A-5 Inlet width = 2'-6"	15.75 left of sta. 4+30.78	
1-4	A-5 Inlet width = 2'-6"	15.75 right of sta. 4+30.78	
1-5	A-5 Inlet width = 2'-6"	See Plan and Profile	
1-6	A-5 Inlet width = 2'-6"	15.75 right of sta. 2+00	
1-7	A-5 Inlet width = 2'-6"	15.75 left of sta. 2+00	
1-8	A-5 Inlet width = 2'-6"	15.75 left of Loop sta 1+39.50	
1-9	A-10 Inlet width = 2'-6"	15.75 left of sta. 3-81	
1-10	A-5 Inlet width = 2'-6"	15.75 right of sta. 8+70.50	
MH-1	Standard Manhole	15.50 right of Loop sta 0+18	
MH-2	B MH See Detail This Sheet	9.75 left of Loop sta 1+39.50	
MH-3	B MH See Detail This Sheet	See Plan and Profile	
MH-4	B MH See Detail This Sheet	See Plan and Profile	
5-1	Special EW see detail this sheet	1170' left of Loop sta. 1+37	
5-2	Special EW see detail this sheet	See Plan and Profile	
5-3	Special EW see detail this sheet	See Plan and Profile	
1-11	A-5 Inlet width = 2'-6"	30' right of Loop sta. 0+66.75	
3-46	B MH See Detail This Sheet	See Plan and Profile	



SPECIAL ENDWALL S-1, 2 & 3



3 MANHOLE MH-3



MODIFIED "K" INLET

APPROVED
DIVISION OF LAND DEVELOPMENT
AND TRANSPORTATION PLANNING
HOWARD COUNTY, MARYLAND
DATE: 6-17-71

DEPARTMENT OF PUBLIC WORKS
B. M. McLeod
CHIEF BUREAU OF HIGHWAYS
OFFICE OF PLANNING AND ZONING
J. H. Clawson
REGISTERED ENGINEER, DIVISION OF LAND DEVELOPMENT
AND TRANSPORTATION PLANNING

Rev.	Date	Revised By	Description
1	6/13/71	J.H.C.	Structural Schedule
2	6/22/71	J.H.C.	Notes, Additions

COLUMBIA
8TH ELECTION DISTRICT
HOWARD COUNTY, MARYLAND
OWNER AND DEVELOPER
HOWARD RESEARCH AND DEVELOPMENT CORP.

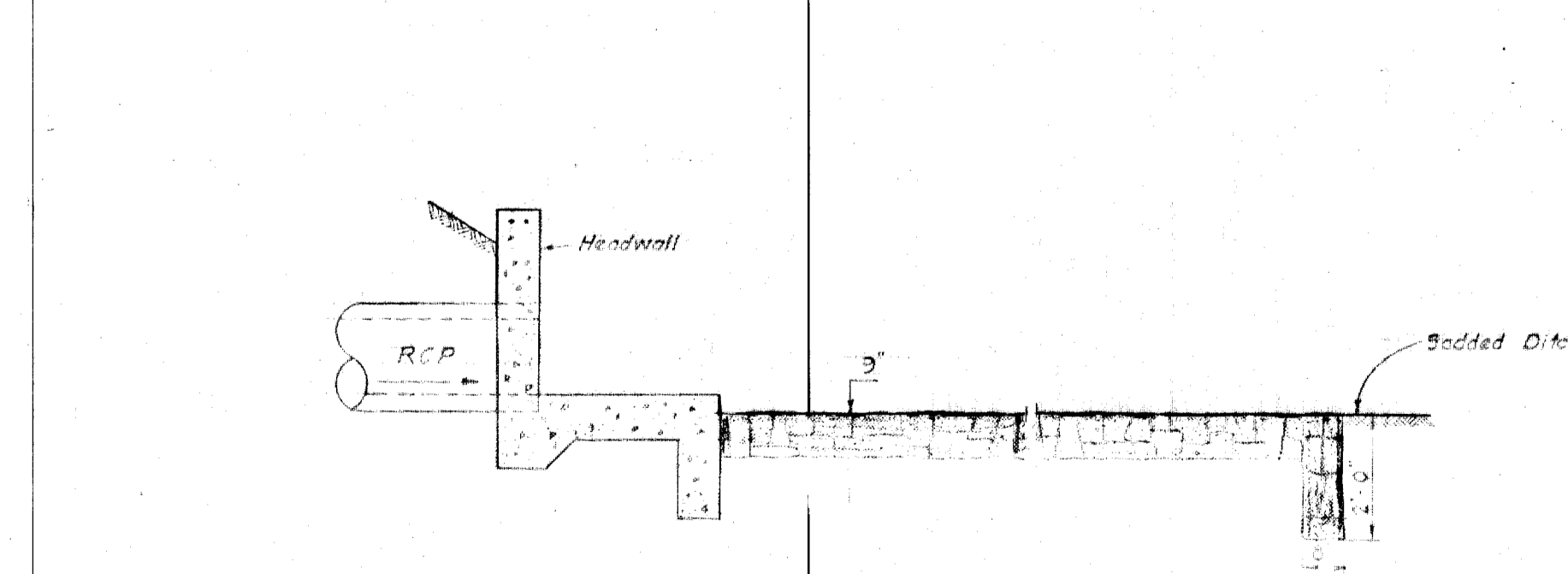
VILLAGE OF LONG BEACH
SECTION 1, AREA 2
25 SUBDIVISION OF PARCEL "C"

SCALE: AS SHOWN DATE: MAY 5, 1971

WHITMAN, SQUADROTT & ASSOCIATES
ENGINEERS
BALTIMORE, MARYLAND 21202

REGISTERED ENGINEER
KENNETH A. McCORD
No. 1974

DETAIL CONCRETE DITCH



RIP RAP DITCH

