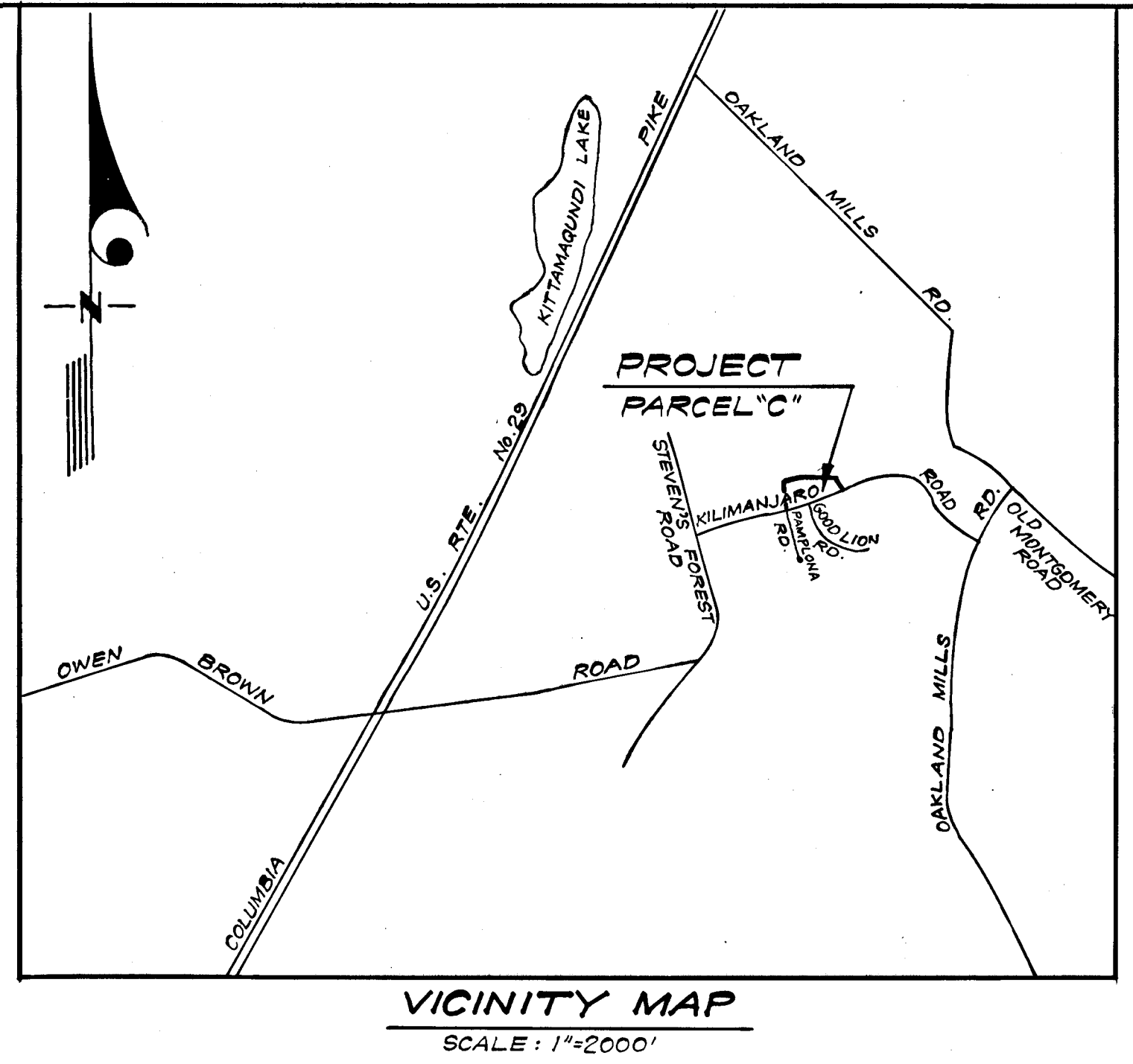


DEPARTMENT OF PUBLIC WORKS
Erin M. Keenan 4/19/71
 Chief, Bureau of Highways DATE
 OFFICE OF PLANNING AND ZONING
J. H. Clawson 4-16-71
 Chief Engineer, Division of Land Development DATE

SHEET INDEX	
SHEET No.	DESCRIPTION
1	LOCATION MAP
2	"A" ROAD & COURT - Street Grade, Storm Drain And Paving Plan
3	"B" ROAD & COURT - Street Grade, Storm Drain And Paving Plan
4	STORM DRAIN PROFILES And STRUCTURE And PIPE SCHEDULES
5	DETAILS
6	DRAINAGE AREA MAP



COLUMBIA
 6TH ELECTION DISTRICT
 HOWARD COUNTY, MARYLAND
 OWNER AND DEVELOPER
 ARTERY COMMUNITIES, INC.
 5530 Wisconsin Avenue
 Chevy Chase, Maryland 20015

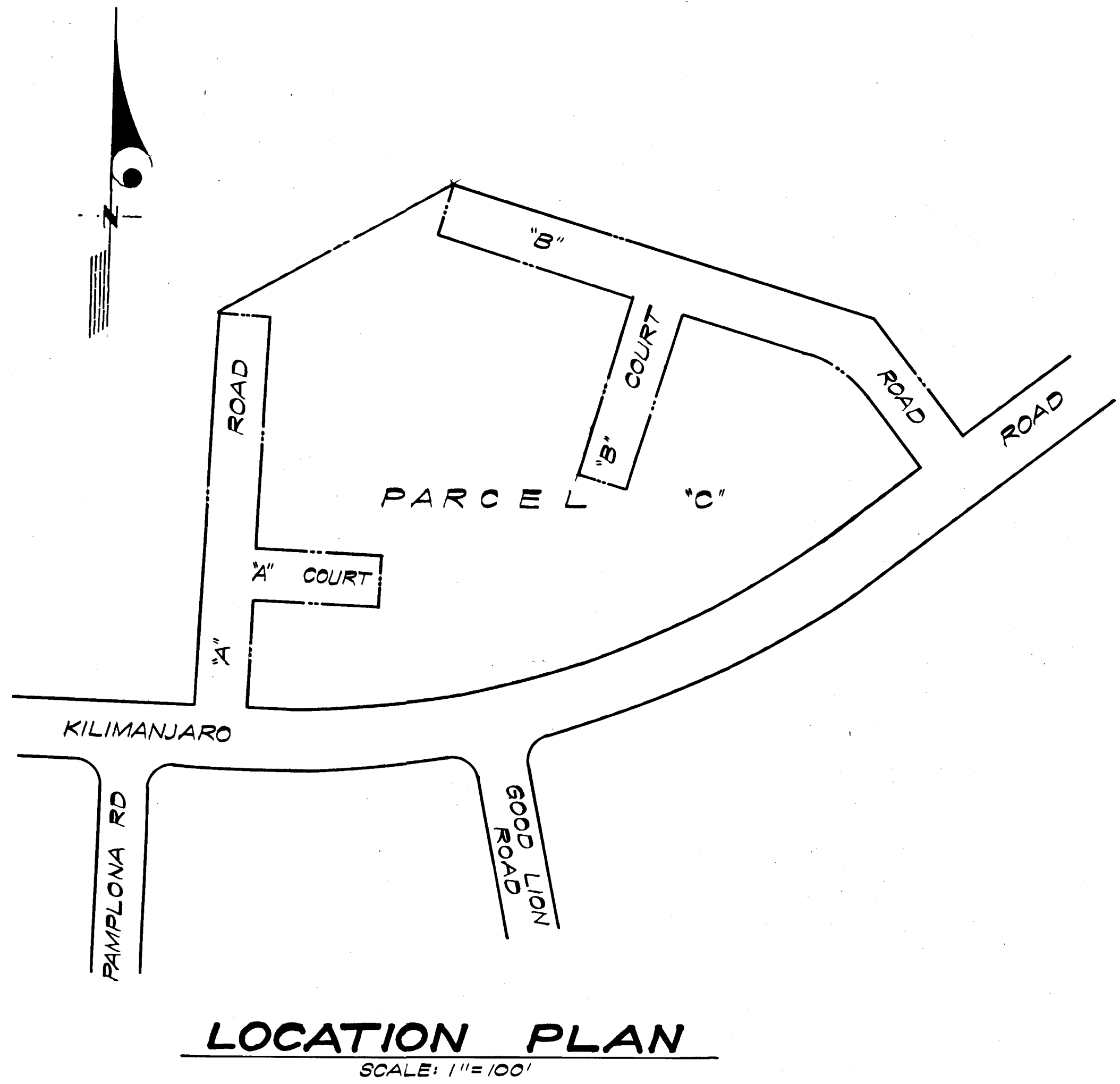
PROJECT: PARCEL "C"
 VILLAGE OF OAKLAND MILLS
 SECTION 2, AREA 4
 PROJECT TITLE: STORM DRAIN PAVING PLAN
 LOCATION PLAN

Des. By R.J.S.	Scale: As Shown	Dwg. No. 1 of 6
Drn. By K.W.C.	Date Feb, 1971	C.C.F. No.
Chk. By R.J.S.	Approved	

CLARK • FINEBROCK & SACKETT
 ENGINEERS • PLANNERS • SURVEYORS
 1107 SILVER SPRING AVENUE • SILVER SPRING, MARYLAND 20910

GENERAL NOTES

- All storm drains and paving shall be constructed in accordance with the latest details and specifications of Howard County.
- Types of Storm Drain Structures refer to the Standard Details of Howard County.
- Trench compaction for storm drains shall be in accordance with the latest Howard County Road Code.
- Information concerning underground utilities was obtained from available records, but the Contractor must determine the exact location and elevation of the mains by digging test pits by hand at all utility crossings, well in advance of trenching.
- All utility companies shall be notified 24 hours in advance of construction.
- In addition to the provisions of Section C-37-2 of Howard County Road Construction Code and Standard Specifications, the Contractor shall build 6" perforated C.M.P. underdrains beneath pipe lines if so directed by the Engineer.



R. Nelson Clark
2-8-71

DEPARTMENT OF PUBLIC WORKS
Braville K. Weiland 4/19/71 DATE
 Chief Bureau of Highways
 OFFICE OF PLANNING AND ZONING
 Chief Engineer, Division of Land Development DATE

COLUMBIA
 6TH ELECTION DISTRICT
 HOWARD COUNTY, MARYLAND
 OWNER AND DEVELOPER
 ARTERY COMMUNITIES, INC.
 5530 Wisconsin Avenue
 Chevy Chase, Maryland 20015

PROJECT: PARCEL "C"
 VILLAGE OF OAKLAND MILLS
 SECTION 2, AREA 4
 PROJECT TITLE: STORM DRAIN & PAVING PLAN
 "A" ROAD & "A" COURT

Des. By R.J.S. Scale As Shown Dwg. No. 2 of 6
 Dwn. By K.W.C. Date Oct., 1970 C.C.F.N.
 Chk. By R.J.S. Approved

CLARK • FINEFROCK & SACKETT
 ENGINEERS • PLANNERS • SURVEYORS
 817 SILVER SPRING AVENUE • SILVER SPRING, MARYLAND 20910

LEGEND
 Existing ground @ 4' _____
 Existing ground @ 45' Left _____
 Existing ground @ 45' Right _____
 Proposed Profile grade _____

APPROVED
 DIVISION OF
 LAND DEVELOPMENT
 PLANNING & ZONING
 OF HOWARD COUNTY
 DATE: 4-18-71
J. Kelly

St. Nelson Clark
 2-8-71

"A" ROAD & "A" COURT 1011-D

Paving from R to Kilimanjaro Road to be in accordance with Howard County Road and Construction Code Dwg. D-10, page 65

PLAN
 SCALE: 1"=50'

NOTE:
 All Roads to be Privately Maintained

Remove Ex. Sidewalk, Paving and Curb & Gutter as necessary to construct entrance to "A" Road.

Mountable Curb & Gutter See Detail, Sheet 5 of 6

End Std. 7" Curb & Gutter 10' from Fillet and begin transition to Mountable Curb & Gutter at Fillet.

NOTE:
 For Details of Various Curb & Gutter Types, See Sheet 5 of 6

B.M. N°R-15 Elev. = 495.14
 Traverse Station R-15

B.M. N°R-15

For Ditch Section, See Detail "Howard Co. Std. J-Inlet Modified, Sheet 5 of 6"

33' RCP Curve Data
 $\Delta = 1732' 04"$
 $R = 660'$
 $T = 101.79'$
 $L = 201.38'$
 $C = 201.20'$

NOTE: Grade Seed Area Around SEE MATCH LINE SHEET 30FG
 M-8 to Provide Positive Drainage to Slots in East & West Sides of Structure. For Details of Slots, See B-Manhole Detail on Sheet 5 of 6

PROFILES
 SCALES: HOR. 1"=50'
 VER. 1"=5'

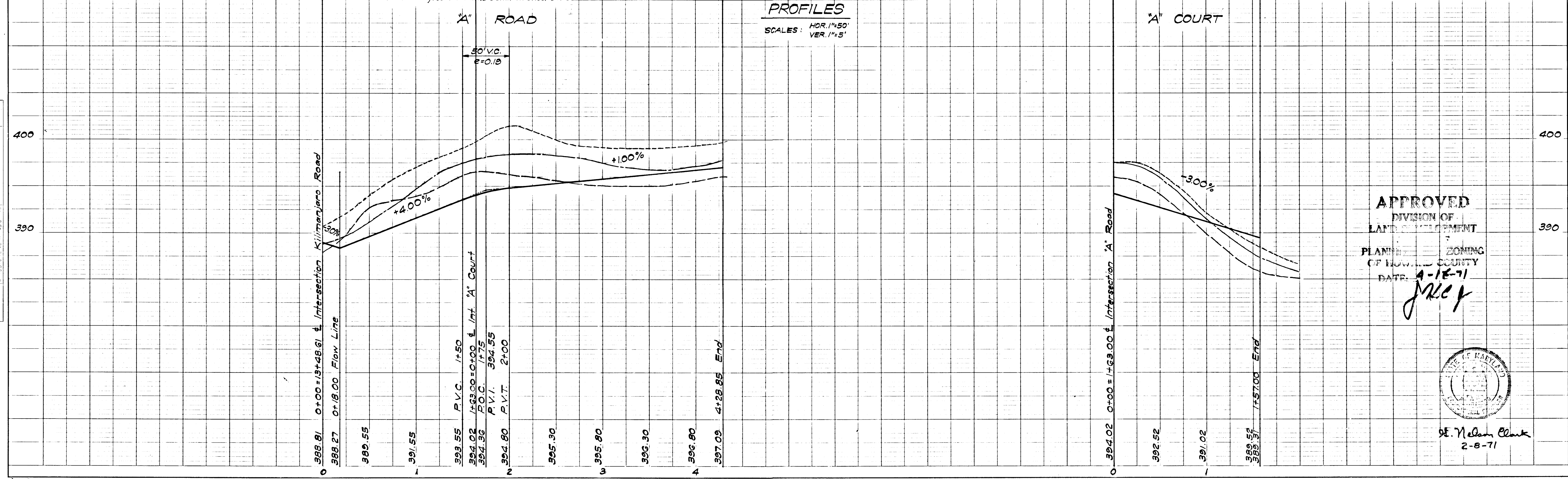


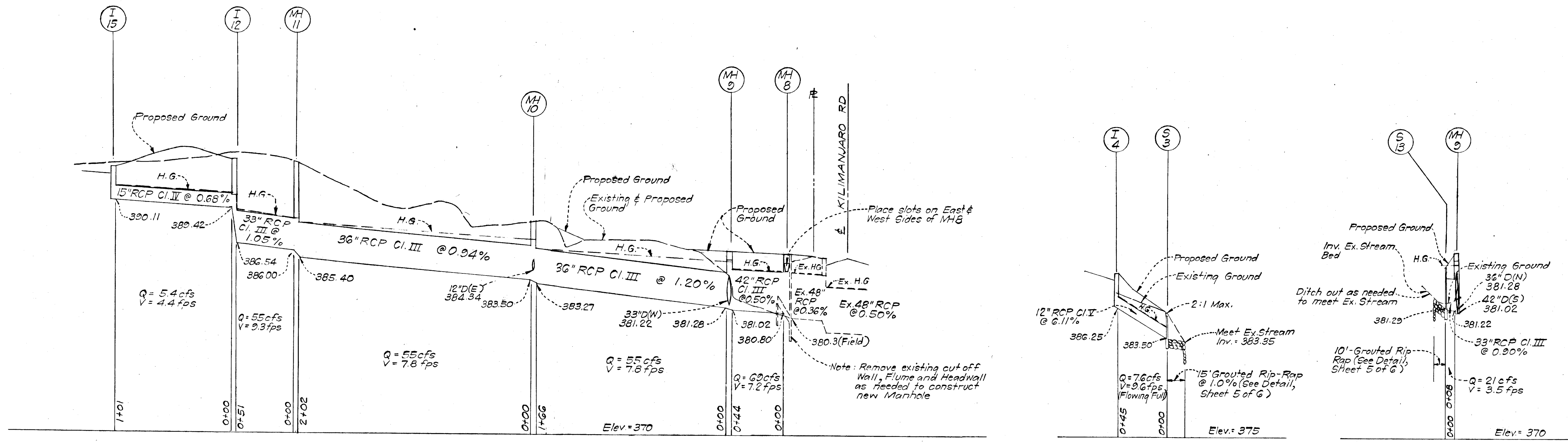
PLATE 1, PLAN PROFILE
 REIFEL & ESSER CO.
 48 7024 HERCULENE GRAFTING FILM 5008

F71-45C

PLAN
 REVIEWED
 DESIGNED
 CHECKED
 DATE
 NO.

PROFILE
 REVIEWED
 DESIGNED
 CHECKED
 DATE
 NO.

#89



COLUMBIA
 6TH ELECTION DISTRICT
 HOWARD COUNTY, MARYLAND
 OWNER AND DEVELOPER
THE ARTERY COMMUNITIES, INC.
 5530 Wisconsin Avenue
 Chevy Chase, Maryland 20015

PROJECT: **PARCEL C**
 VILLAGE OF OAKLAND MILLS
 SECTION 2, AREA 4

PROJECT TITLE: **STORM DRAIN & PAVING PLAN**
 STORM DRAIN PROFILES, STRUCTURE & PIPE SCHEDULES

Des. By R.J.S. Scale: As Shown Dwg. No. 4 of 6
 Drn. By K.W.C. Date Dec, 1970 C.C.F.N?
 Chk. By R.J.S. Approved

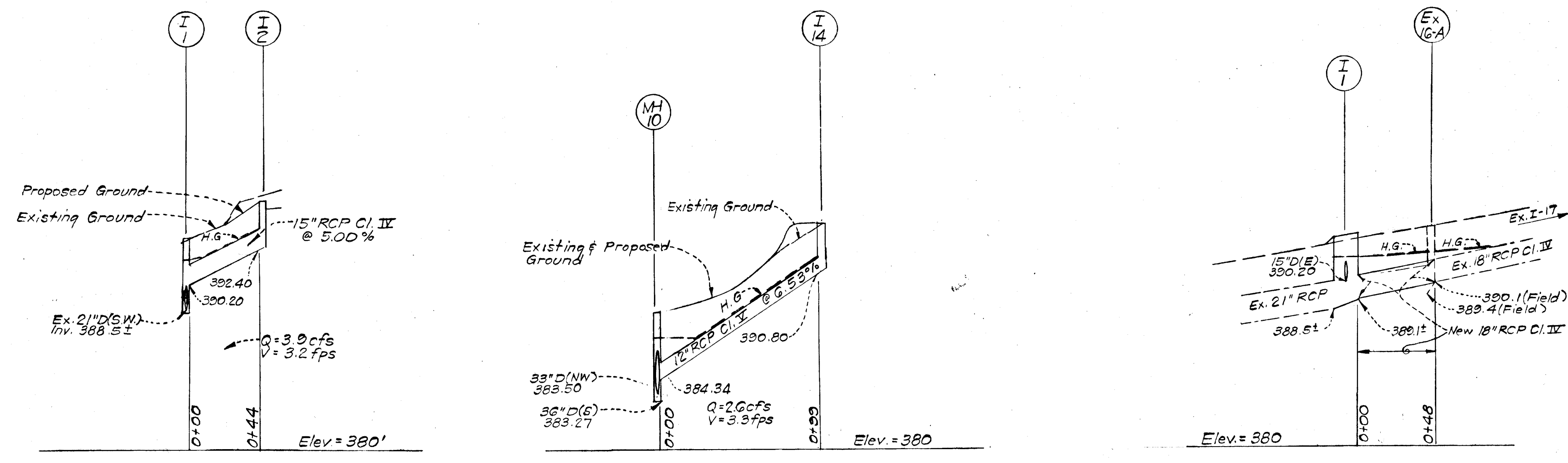
CLARK • FINEPROCK & SACKETT
 ENGINEERS • PLANNERS • SURVEYORS
 87 SILVER SPRING AVENUE • SILVER SPRING, MARYLAND 20910

STORM DRAIN PROFILES
 SCALES: Hor. 1"=50'
 Ver. 1"=5'

STRUCTURE SCHEDULE				
NO.	TYPE	TOP ELEV. UPPER/LOWER	REMARKS	LOCATION
I-1	A-15 Inlet	393.17/393.01	Howard Co. Std #	See Plan
I-2	A-5 Inlet	394.61/394.51	" " " W=2'-6"	" "
S-3	C-Endwall	" " "	" " " D=12"	" "
I-4	B-10 Inlet	389.88/389.44	" " " W=2'-6"	" "
MH-8	B-Manhole	385.90**	See Detail Sht. 5 54" Sq	" "
MH-9	B-Manhole	386.20***	" " " 48" Sq	" "
MH-10	B-Manhole	388.60****	" " " 48" Sq	" "
MH-11	Manhole	389.70***	Howard Co. Std. 4'x4'	" "
I-12	J-Inlet	392.90 *	" " " Modified	" "
S-13	C-Endwall	" " "	" " " D=36"	" "
I-14	A-5 Inlet	394.05/393.93	" " " W=2'-6"	" "
I-15	A-5 Inlet	393.37/393.25	" " " W=2'-6"	" "

- * Invert of Ditches @ Structure I-12
- ** Top Slab Elev. Cast Manhole Frame in B" Top Slab. Place G" Slots on E & W Sides of M-8. Inv. of Slots=384.73
- *** Elev. Top of Manhole Frame
- † Increase "W" as needed to accommodate existing 21" RCP and new 18" RCP CI.IV.
- **** Cast Manhole Frame and Cover in B" Top Slab. Grade shown is Top of Slab Elev.

PIPE SCHEDULE		
SIZE	TYPE	LENGTH
12"	RCP CI. V	144'
15"	RCP CI. IV	145'
33"	RCP CI. III	59'
36"	RCP CI. III	368'
42"	RCP CI. III	44'
18"	RCP CI. IV	49'

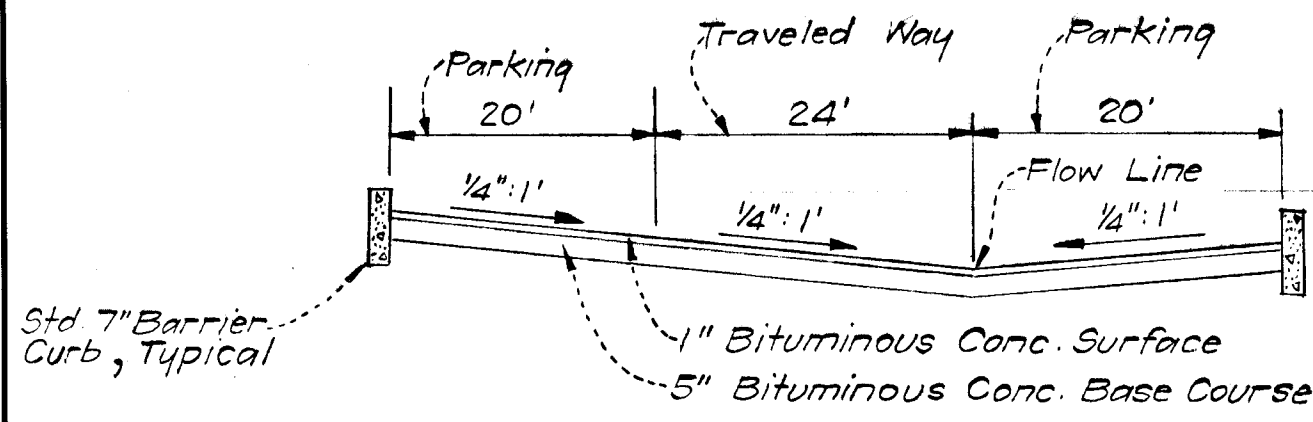


1. Remove Ex. Inlet IGA (B-15 Inlet)
2. Remove Ex. 21" RCP between Ex. Inlet IGA and New Inlet I-1.
3. Build New Inlet I-1 over and connect to Ex. 21" RCP at location shown in Plan.
4. Connect New 18" RCP CI.IV to Ex. 18" RCP and extend in line and grade to New Inlet I-1.

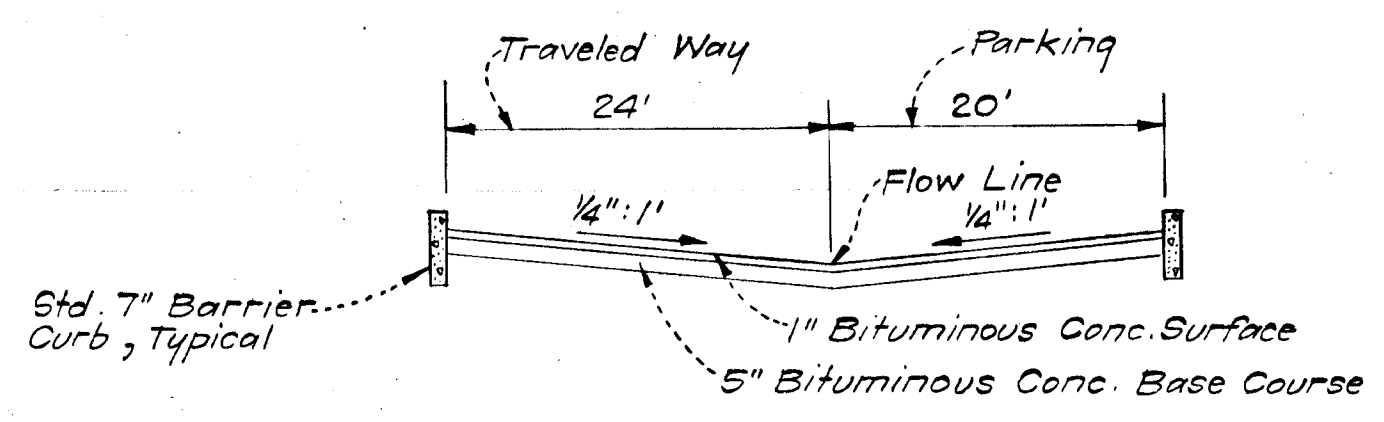
APPROVED
 DIVISION OF
 LAND DEVELOPMENT
 OFFICE OF
 PLANNING AND ZONING
 OF HOWARD COUNTY
 DATE: 4-16-71
JRC



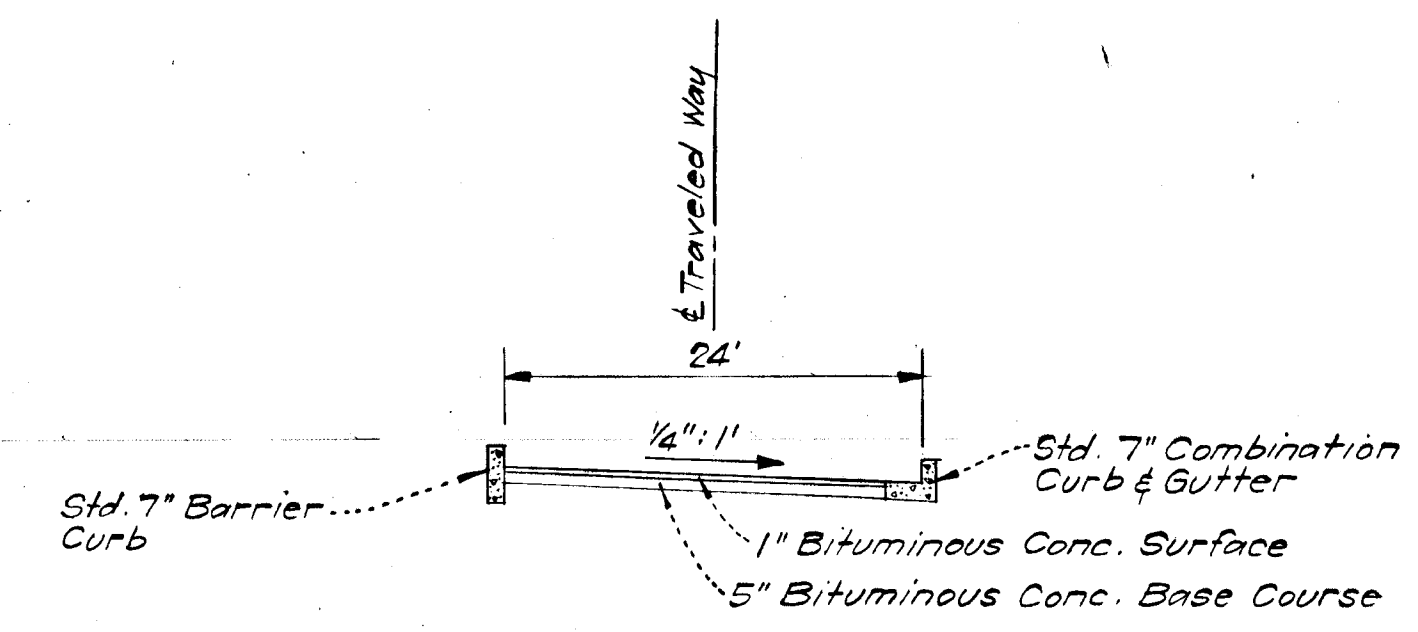
Clark
 2-871



TYPICAL SECTION PARKING BOTH SIDES
 (PRIVATELY MAINTAINED)
 NO SCALE



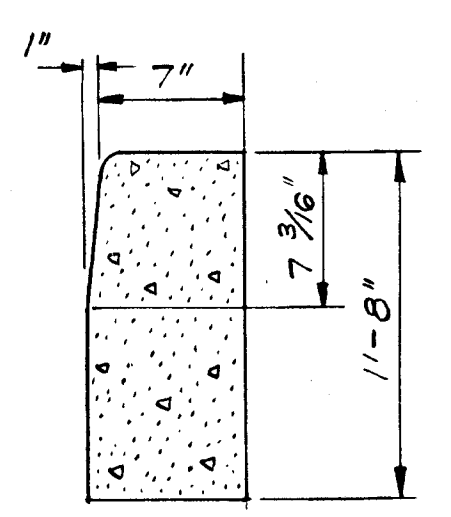
TYPICAL SECTION PARKING ONE SIDE
 (PRIVATELY MAINTAINED)
 NO SCALE



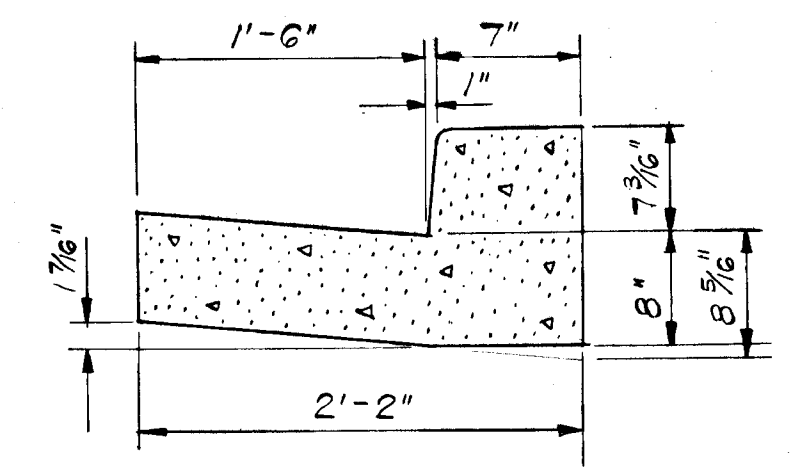
TYPICAL SECTION NO PARKING
 (PRIVATELY MAINTAINED)
 NO SCALE

PAVING NOTES

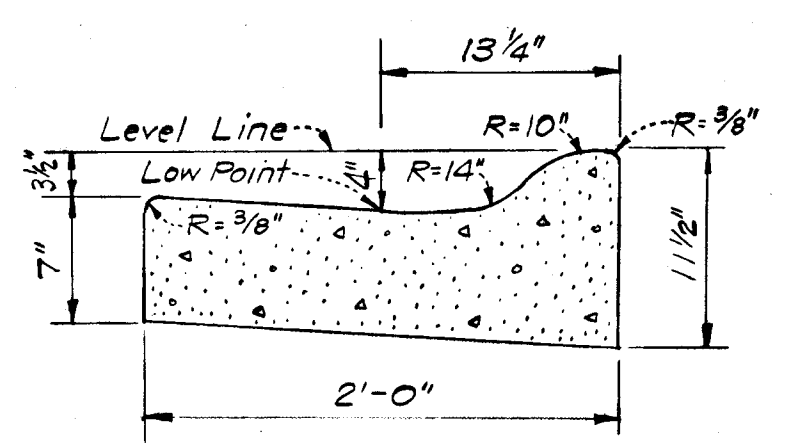
1. Sidewalks to be constructed where shown on plan.
2. All streets (parking, curb & gutter, etc.) to be privately maintained.
3. See plan for locations of what type curb & gutter combinations to be used.
4. Cross slopes on "A" Court differ from that shown on this sheet, see Plan.
5. See Plan for location of flow lines and treatment of entrances onto Kilimanjaro Road.
6. Special paving to be used in entrances into Kilimanjaro Road (from R.L. to existing paving). See Howard County Road and Construction Code Dwg. D-10, page 65.



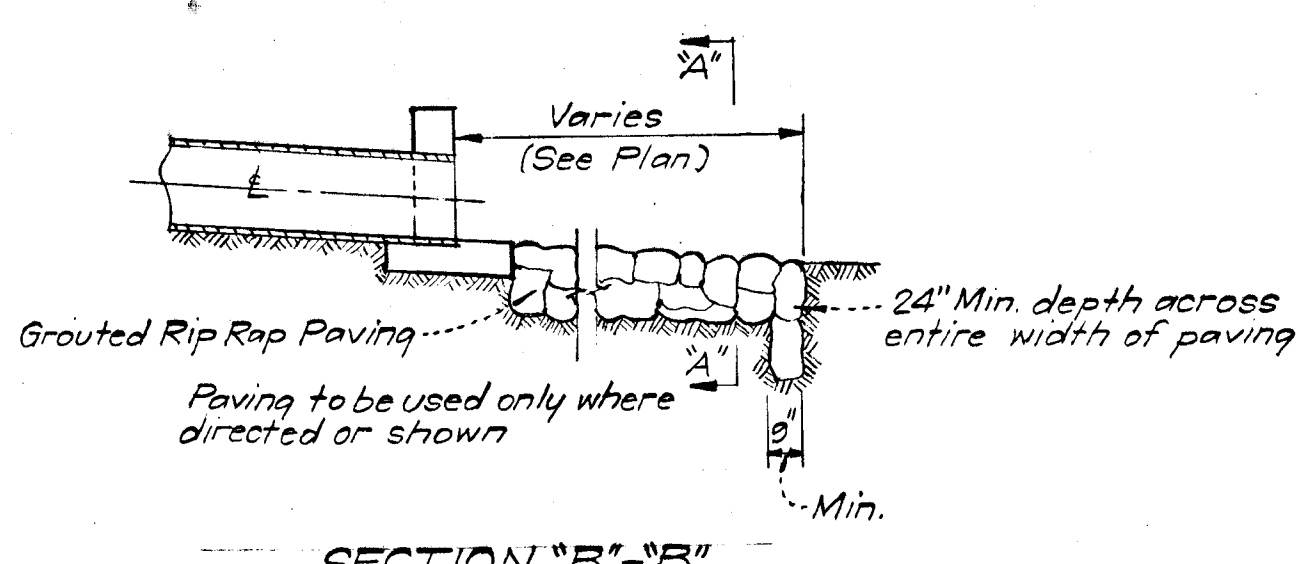
TYPICAL DETAIL
 BARRIER CURB
 NO SCALE



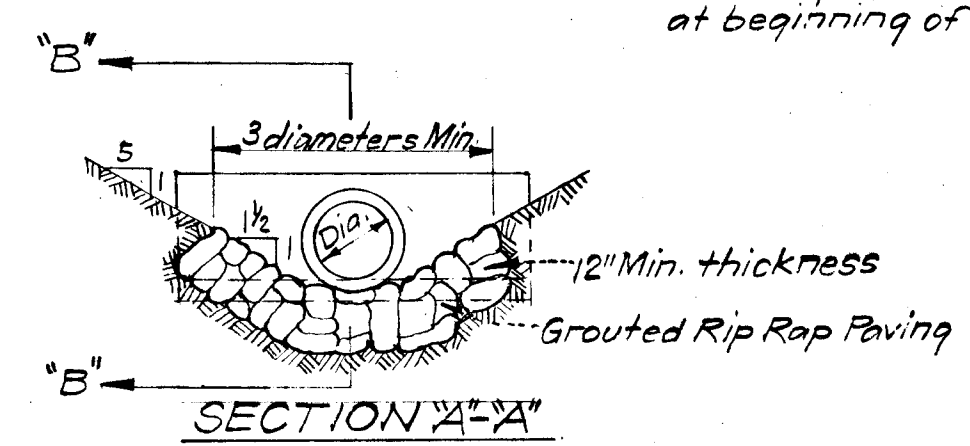
STD. 7" COMBINATION
 CURB & GUTTER
 NO SCALE



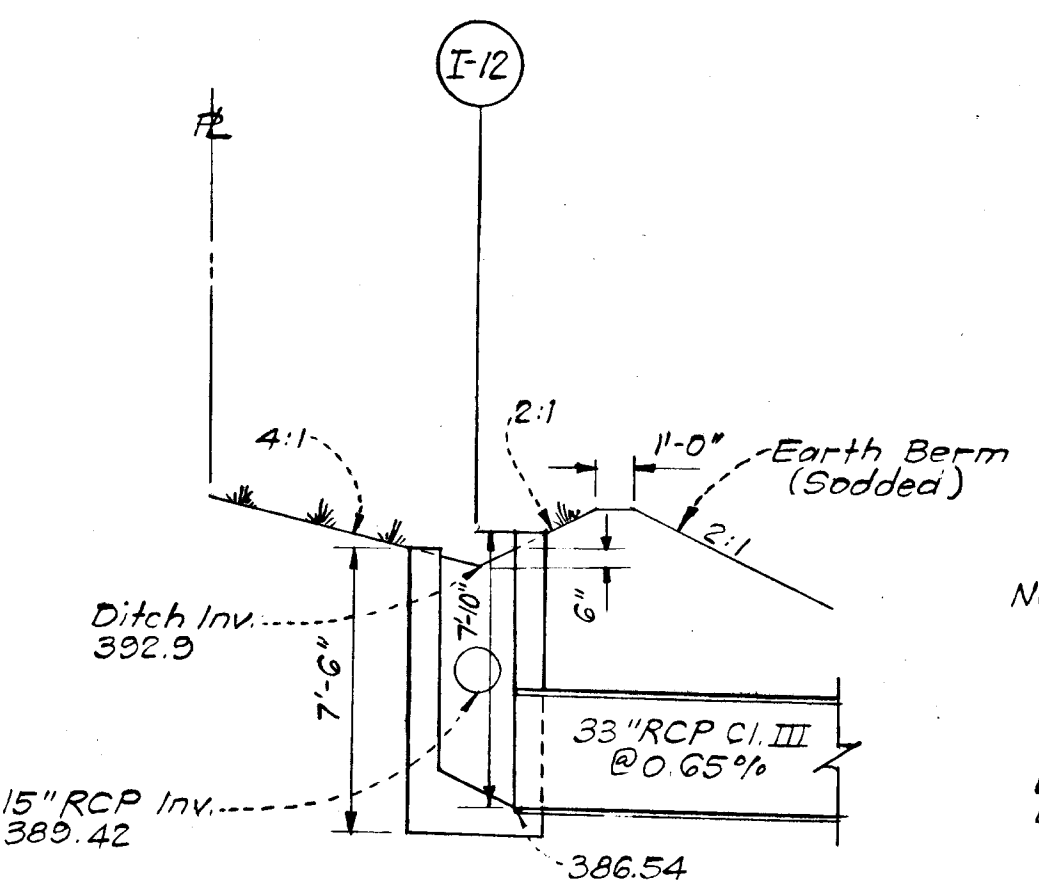
MOUNTABLE CONCRETE CURB & GUTTER
 NO SCALE



SECTION "B"-B"
 NOTE:
 Transition Rip Rap from 1/2:1 side slopes to 5:1 side slopes at beginning of Sodded Ditch.
 NO SCALE

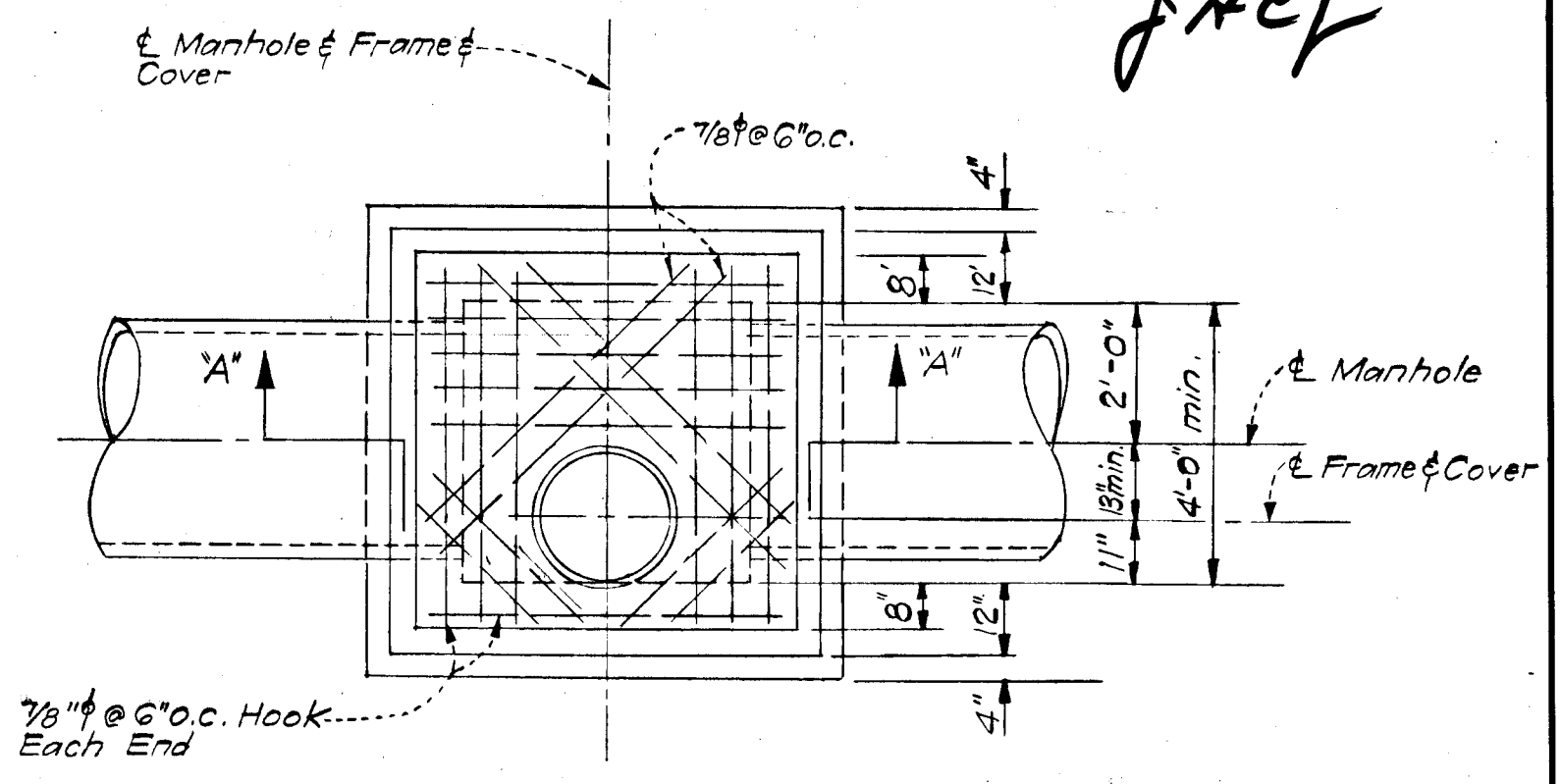


SECTION "A"-A"
 RIP RAP PAVING DETAIL
 NO SCALE

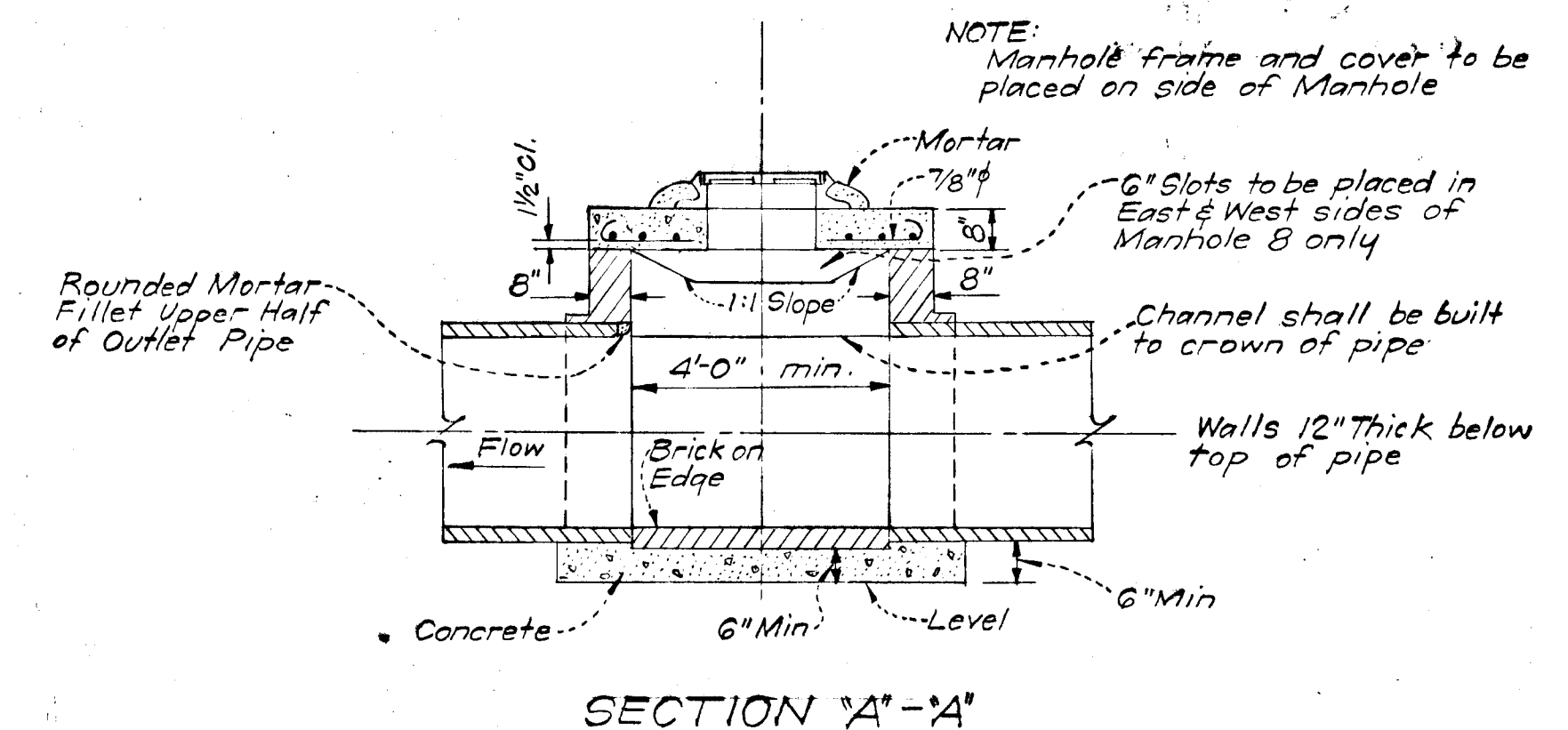


HOWARD CO. STD. J-INLET - MODIFIED
 NO SCALE

NOTE:
 For Standard Notes and dimensions, see Howard Co. Dwg. No. D-90, pg. 145.



PLAN

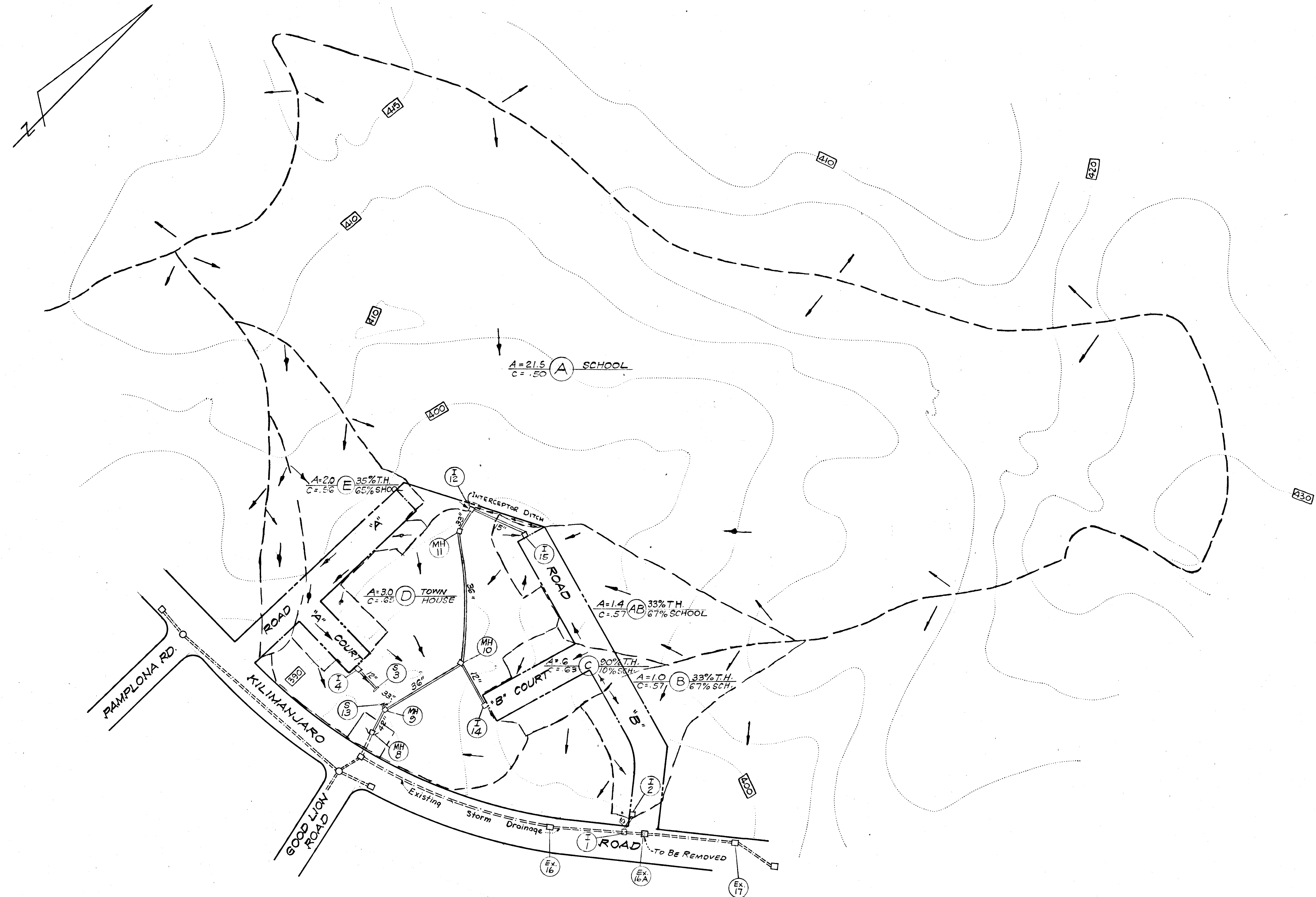


SECTION "A"-A"

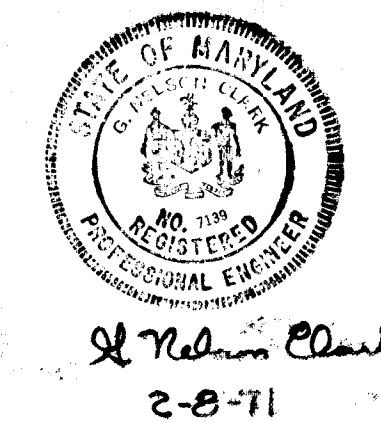
TYPICAL B MANHOLE DETAILS
 NO SCALE



St. Nelson Bank
 28-71



APPROVED
 DIVISION OF
 LAND DEVELOPMENT
 OFFICE OF
 PLANNING AND ZONING
 OF HOWARD COUNTY
 DATE: 4-16-71
JHCJ



CLARK • FINEROCK & SACKETT ENGINEERS • PLANNERS • SURVEYORS 817 SILVER SPRING AVENUE • SILVER SPRING, MARYLAND 20910 (301) 567-1500		
DESIGNED W.R.M ⁶	DRAINAGE AREA MAP PARCEL 'C'	SCALE 1"=100'
DRAWN C.C.M.	VILLAGE OF OAKLAND MILLS SECTION 2 AREA 4; STEVEN'S FOREST	DRAWN BY 607G
CHECKED W.R.M ⁶	COLUMBIA 6TH ELECTION DISTRICT HOWARD COUNTY, MARYLAND	JOB NO. 70-329
DATE June, 1970	FOR: ARTERY COMMUNITIES, INC. 5530 Wisconsin Avenue Chevy Chase, Md. 20015	1011-D