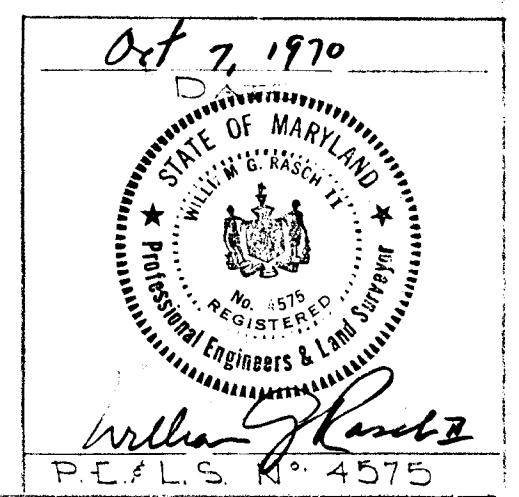


GENERAL NOTES:
 1) All Construction Shown Hereon Shall Be In Accordance With Howard County Road Construction Code / Standard Specifications Dated Nov. 27, 1962 And Revised August 1967
 2) References To Plans And Drawing Numbers Shown Hereon Are Referred To Above Mentioned Specifications.
 3) Bench Mark -
 Bench Mark 2 - Elevation 191.55
 Iron Pipe Right @ Sta 6+00 North Farm Drive



PURDUM UESCHKE
 ENGINEERS
 LAND SURVEYORS
 3697 PARK AVE.
 ELLICOTT CITY, MARYLAND

OWNER & DEVELOPER
 HOWARD
 DEVELOPMENT CO.
 3900 N. CHARLES ST.
 BALTIMORE, MARYLAND

DEPARTMENT OF PUBLIC WORKS

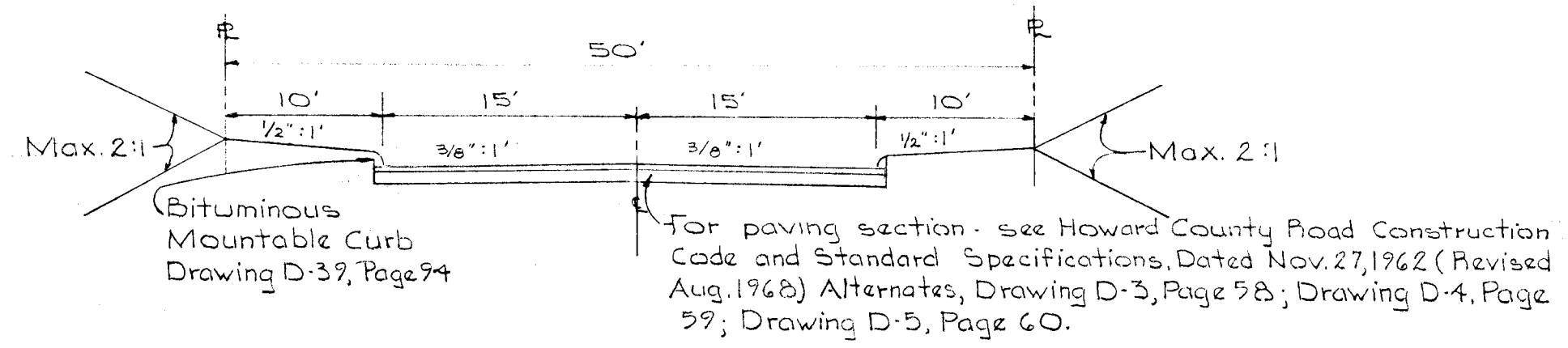
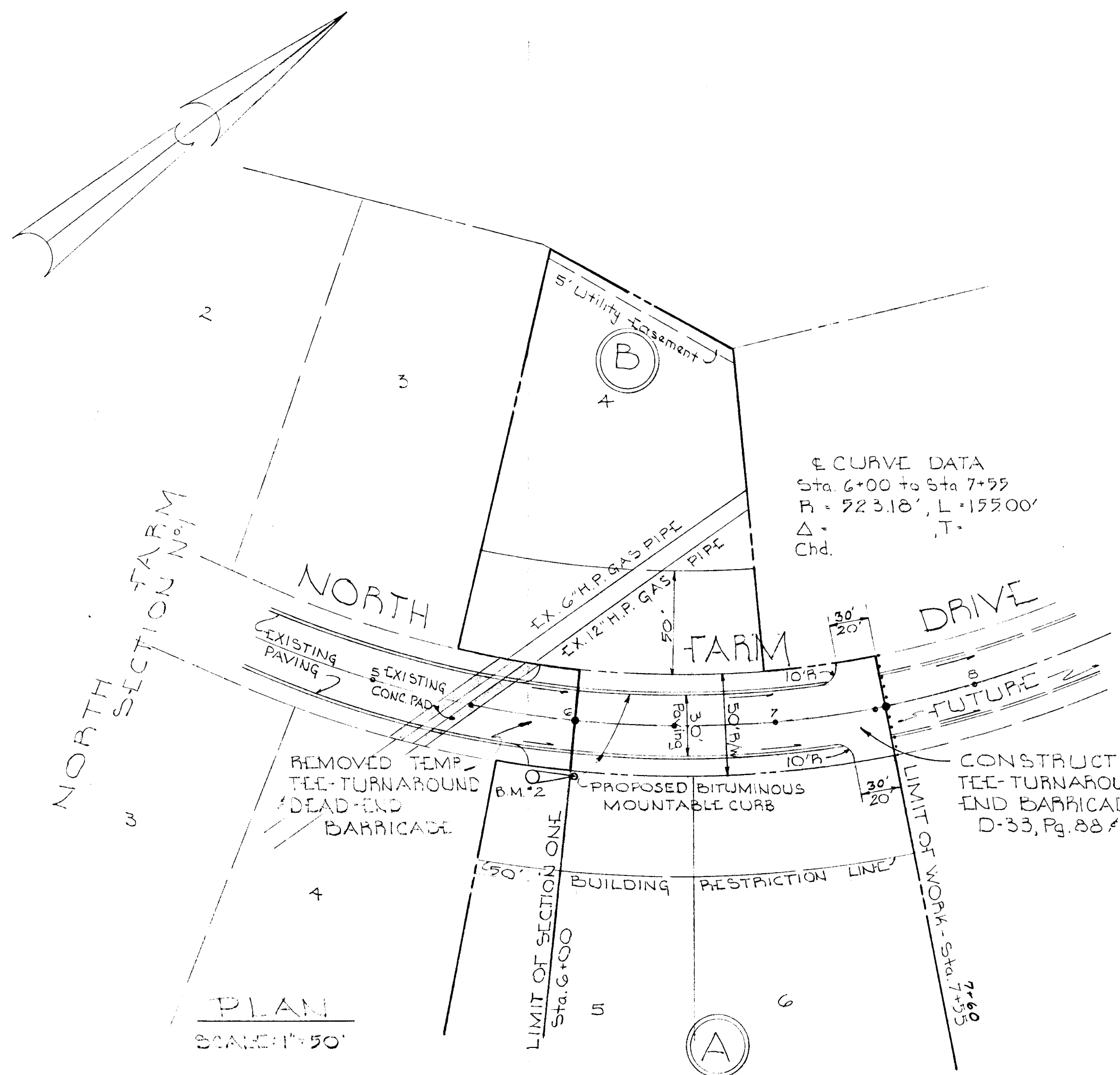
Granville H. Mealand 12/15/70
 Chief, Bureau of Highways Date

J.H. Clawson 12/14/70
 Chief Engineer, Division of Land Development Date

OFFICE OF PLANNING AND ZONING

PLAN AND PROFILE: NORTH FARM DRIVE

NORTH FARM
 SECTION NO 2
 2ND ELECTION DISTRICT - HOWARD COUNTY, MD.
 OCTOBER 7, 1970 SCALE: AS SHOWN
 SHEET 1 OF 1



TYPICAL SECTION
 NO SCALE

