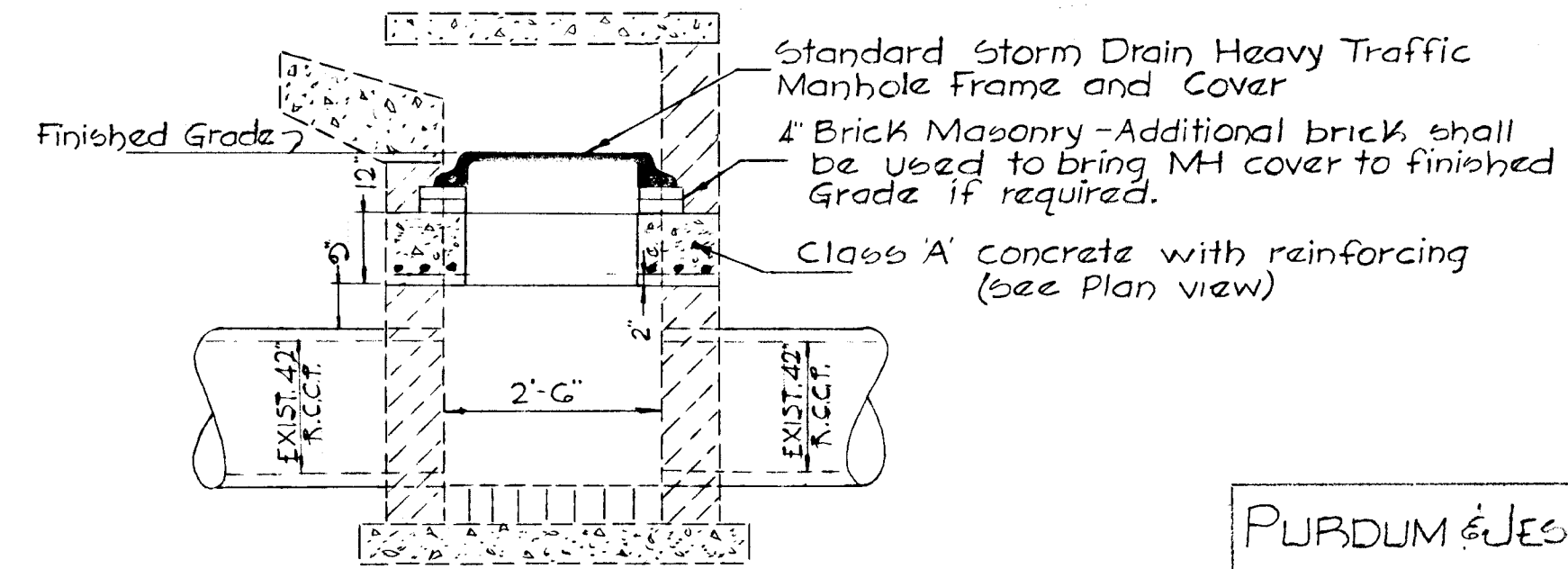
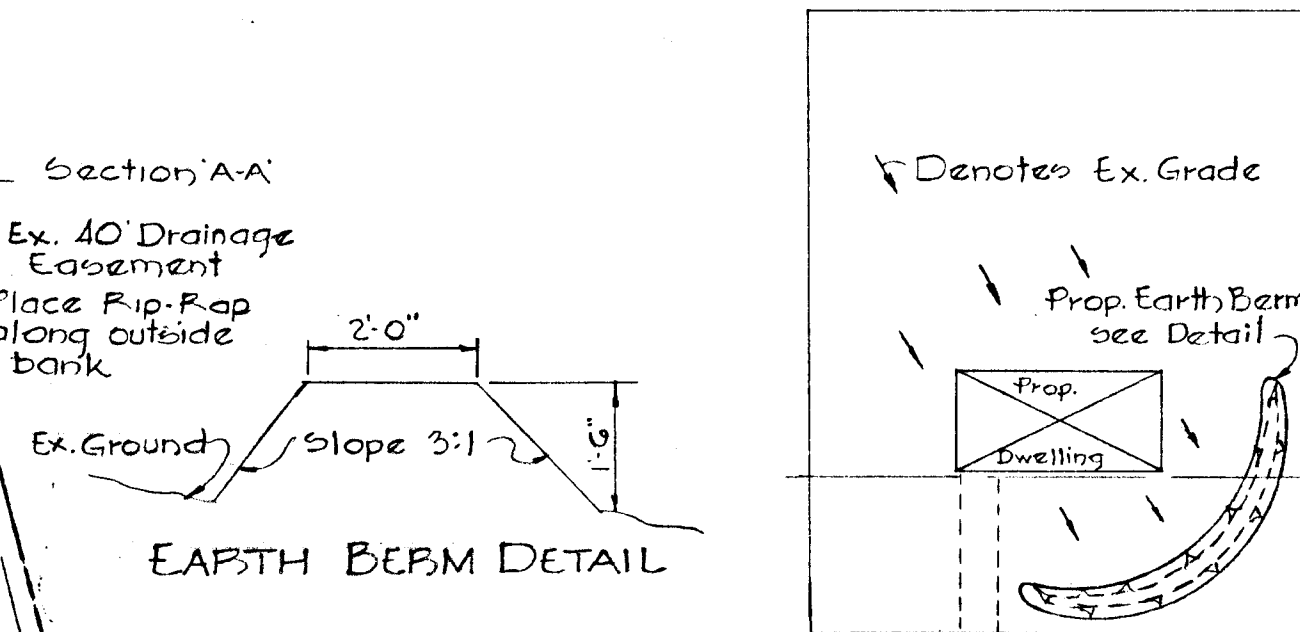


GENERAL NOTES

- All construction shown hereon shall be in accordance with Howard County Road Construction Code and Standard Specifications dated Nov. 27, 1962 and Revised August 1967.
- Reference to page and Drawing Number shown hereon are referred to above mentioned specifications.
- Bench Mark W.P.A # 51-Q-1 Elev. 442.32
P.R. spike in C&P pole # 549 south side Frederick Pd.
- Bench Mark W.P.A # 51-Q-2 Elev. 450.38
P.R. spike in C&P pole # 557 south side Frederick Pd.



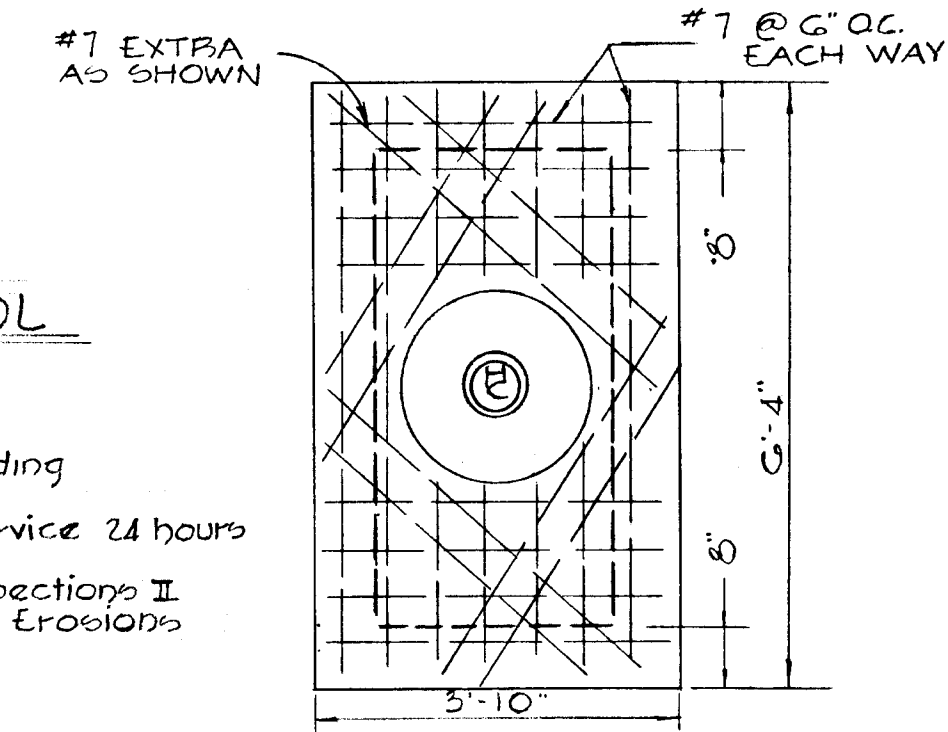
DETAIL S-2
NOT TO SCALE



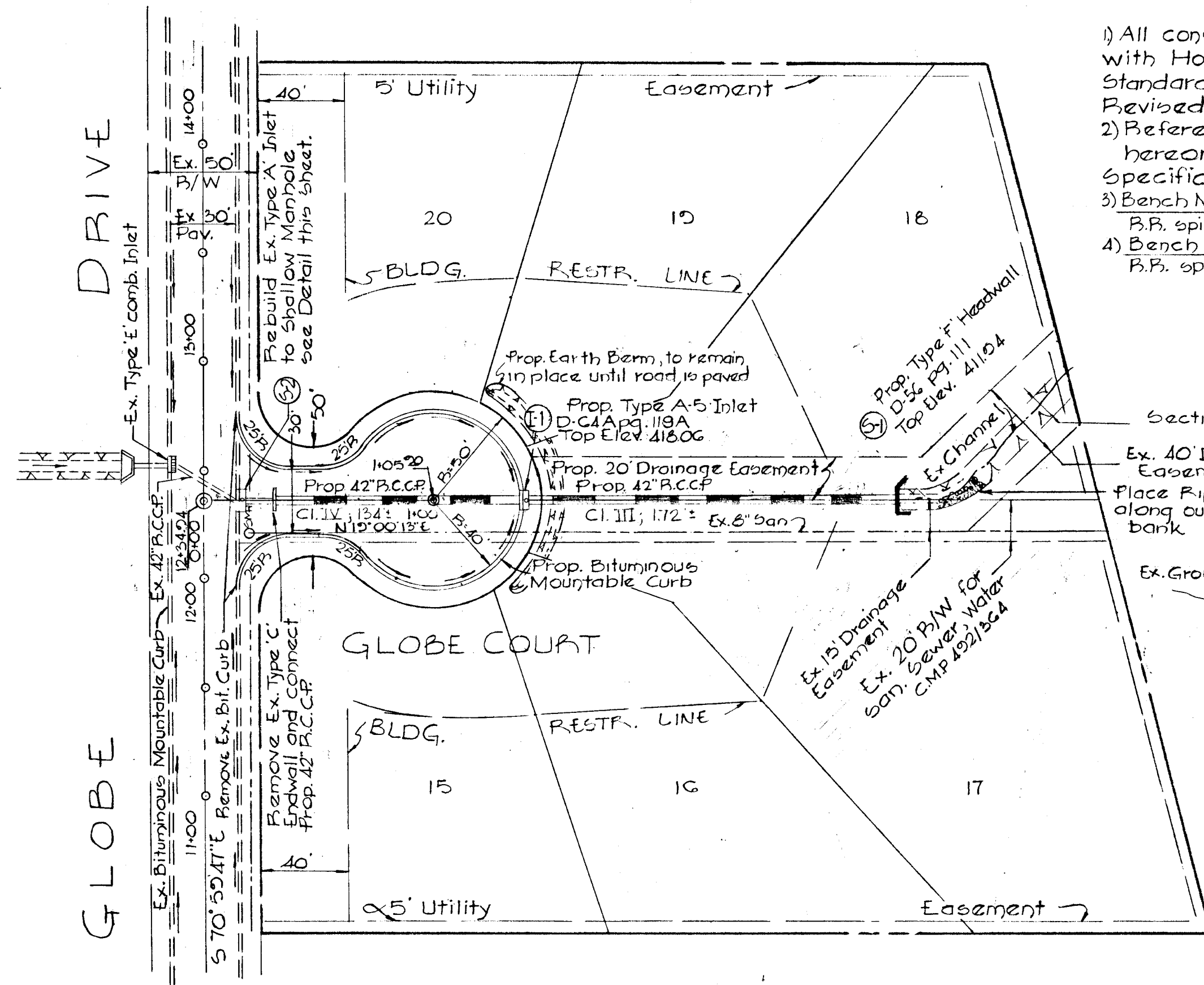
TYPICAL SEDIMENT CONTROL
FOR INDIVIDUAL LOT
NO SCALE

- Sediment Control Devices to be constructed prior to any grading or construction.
- Contractor shall notify Howard County Soil Conservation Service 24 hours prior to any grading.
- bedbed preparation and seeding to be in accordance with sections II and III page 3101 of standards and specifications for Soil Erosions and Sediment Control in Urbanizing Areas dated Nov. 1962

STRUCTURE		SCHEDULE			REMARKS
NO	TYPE	INV. IN	INV. OUT	TOPELV.	
S-2	EXIST. TYPE 'A' INLET	414.90	414.25	420.15	SEE DETAIL
I-1	A-5 INLET	410.00	410.80	416.06	
S-1	TYPE 'F' HEADWALL	-	407.36	411.94	



TOP SLAB REINFORCING



PLAN
SCALE 1"=50'

PURDUM & JESCHKE ENGINEERS AND LAND SURVEYORS
3607 PARK AVE. ELLICOTT CITY, MARYLAND

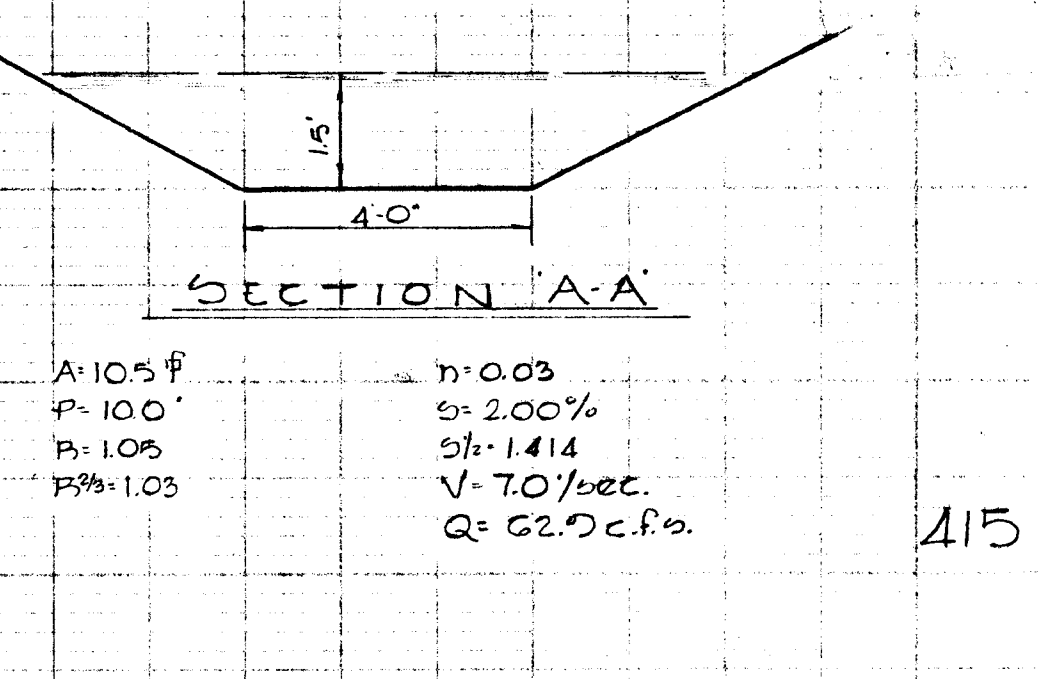
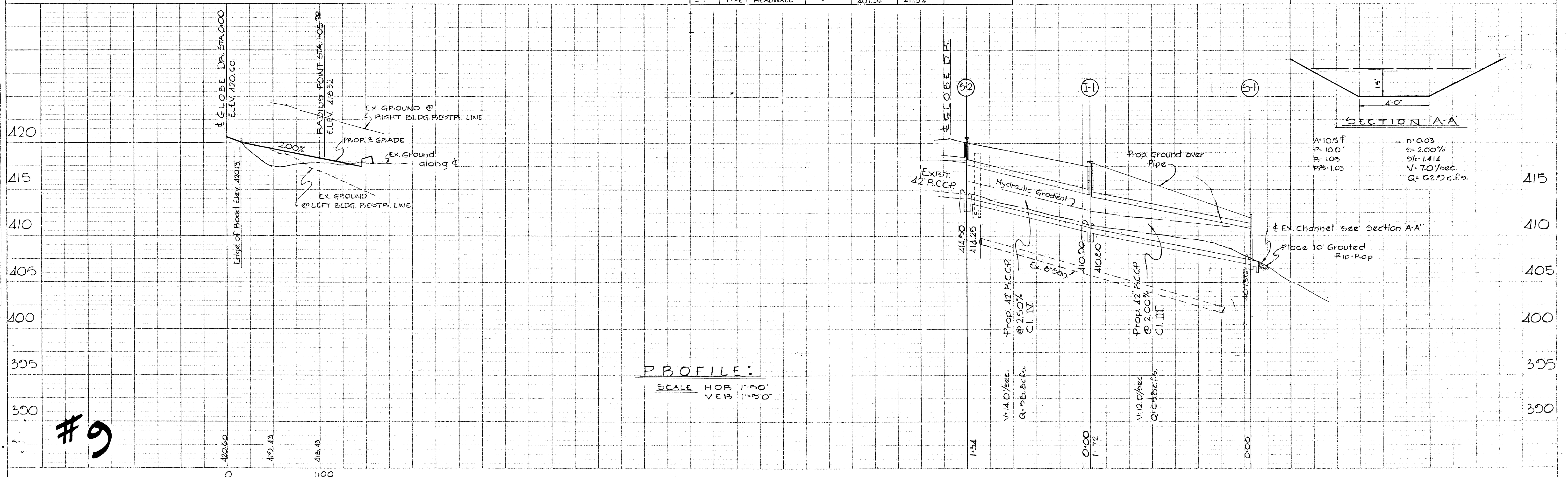
OWNER & DEVELOPER
LEE ROY STIRN ENTERPRISES
222 GREENWAY DRIVE ELLICOTT CITY, MARYLAND

DEPARTMENT OF PUBLIC WORKS
Branville N. Niskand 11/27/70
Chief, Bureau of Highways Date
OFFICE OF PLANNING AND ZONING

J. H. Clawson 11-23-70
Chief Engineer, Division of Land Development Date

PLAN AND PROFILE

FAIRWAY HILL
RESUBDIVISION OF LOTS 9, 10, 11, & 12
REVISED SECTION 2
2ND ELECTION DISTRICT - HOWARD CO. MD.
AUGUST 10, 1970 SCALE: AS SHOWN
SHEET 1 OF 1



#9