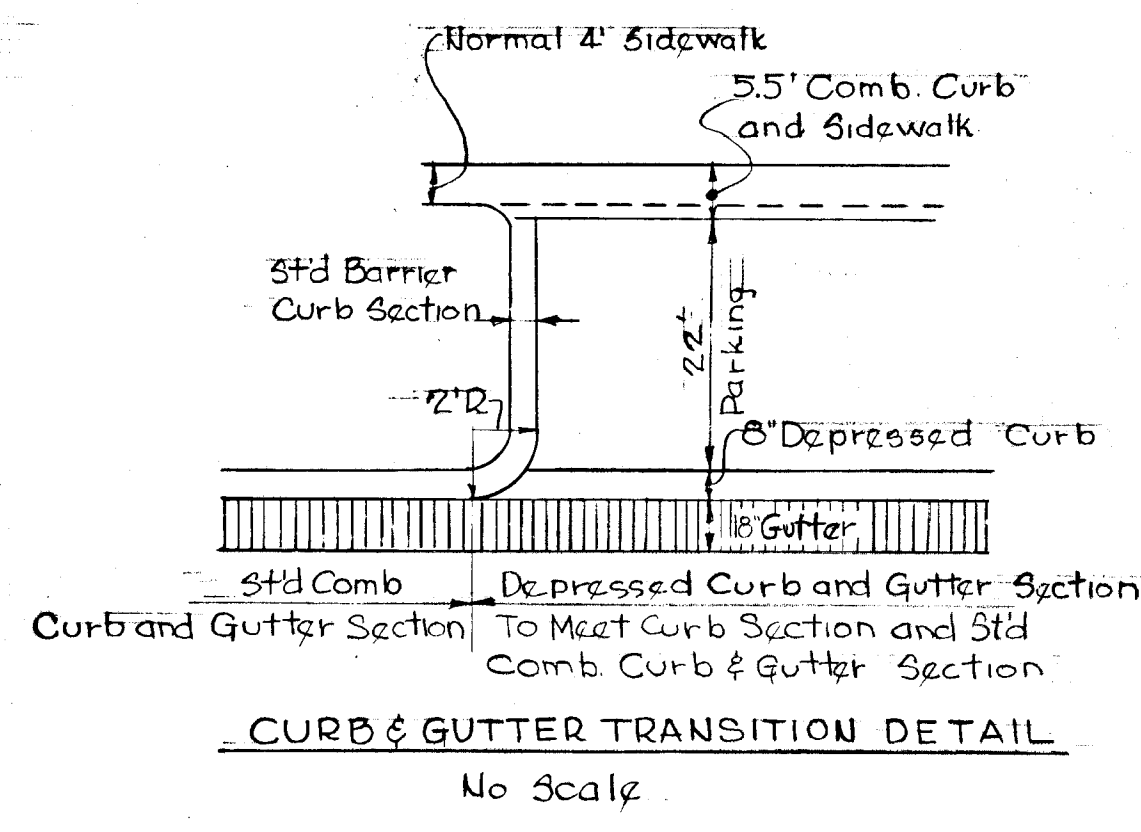
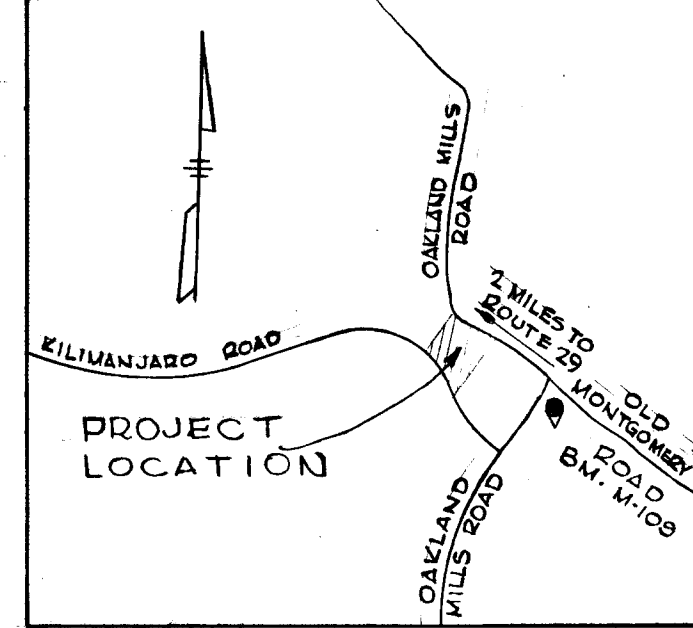


**± CURVE DATA**

PC.	1+43.74	3+52.70
PT.	2+53.70	4+62.66
Δ	180°00'00"	180°00'00"
R	35.00'	35.00'
Arc	109.96'	109.96'
T	—	—
Chd	70.00'	70.00'
Chd Brg	N 26°16'03"E	S 26°16'03"W



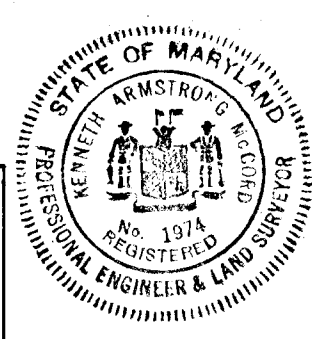
**BENCH MARK M-109**  
 410 feet south east of the centerline of Oakland Mills Road, 17.0 feet west of the centerline of Old Montgomery Road, 3.0 feet south of pole # 21118, 2.0' north east of a metal witness post, set in a concrete post projecting 2 inches.



**LEGEND**  
 — Standard 7" Comb. Curb & Gutter  
 - - - Depressed Curb & Gutter  
 NOTE All street curb returns shall have 20' radii unless otherwise noted

**HOWARD HOMES INC**  
 OWNER AND DEVELOPER  
 P.O. BOX 802  
 Columbia, Maryland

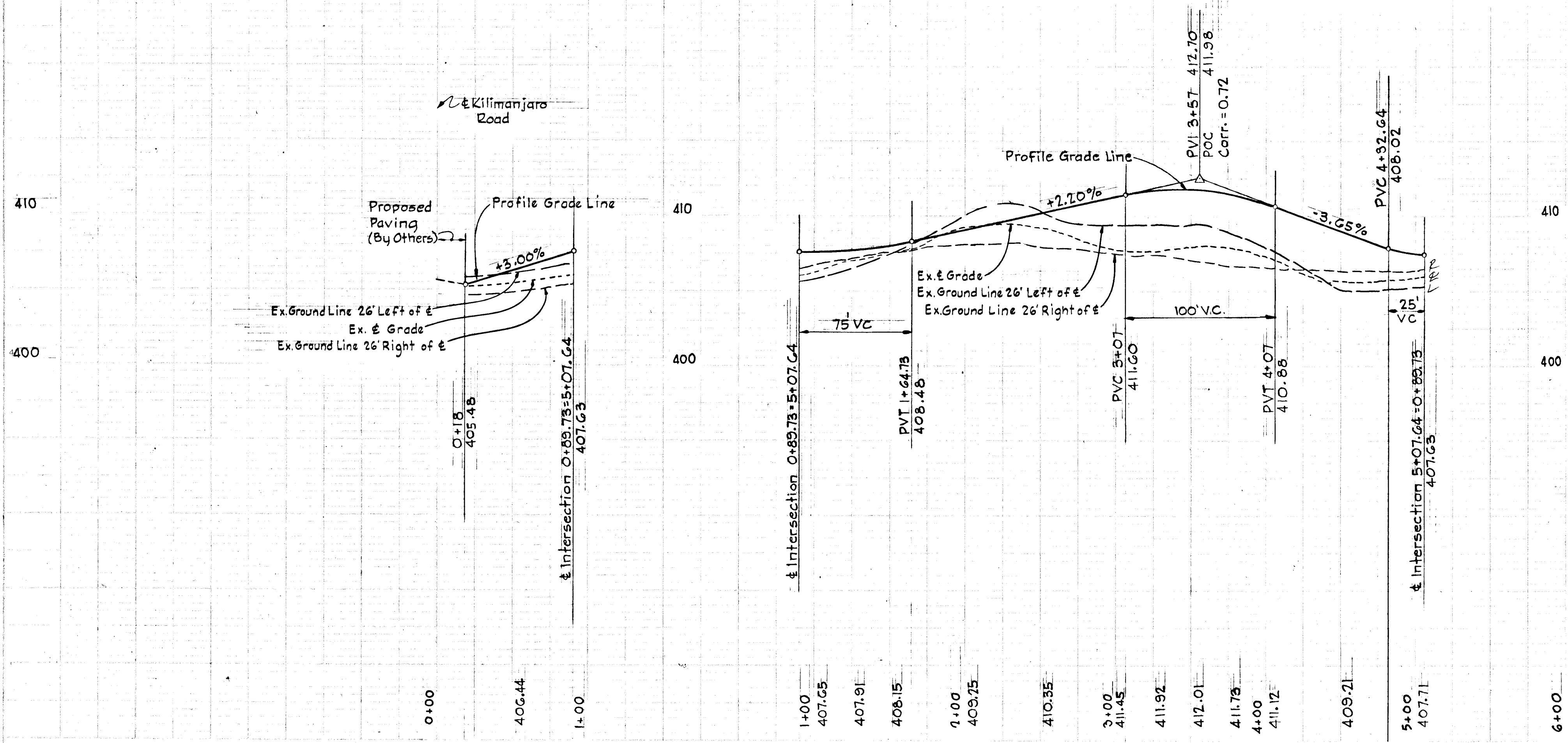
*Kenneth A. McCord* 7/8/70  
 KENNETH A. MCCORD Date  
 Registered Engineer No. 1974  
**WHITMAN, REQUARDY & ASSOCIATES**  
 ENGINEERS  
 1304 ST. PAUL STREET  
 BALTIMORE, MARYLAND



DEPARTMENT OF PUBLIC WORKS  
*B. M. McKeand* 9/21/70  
 CHIEF BUREAU OF HIGHWAYS DATE  
 OFFICE OF PLANNING AND ZONING  
*J. H. Clawson* 9-21-70  
 CHIEF ENGINEER DIVISION OF LAND DEVELOPMENT DATE

REV. DATE	No.	DESCRIPTION
		COLUMBIA ELECTION DISTRICT NO. 6 HOWARD COUNTY MARYLAND VILLAGE OF OAKLAND MILLS SECTION 2 AREA 4 RESUBDIVISION OF PARCEL "E"
		ROAD GRADE READER LANE

Scale: As Shown Date: July 8, 1970 Dwg. No. 1 of 4



#89

PLANNING ENGINEER

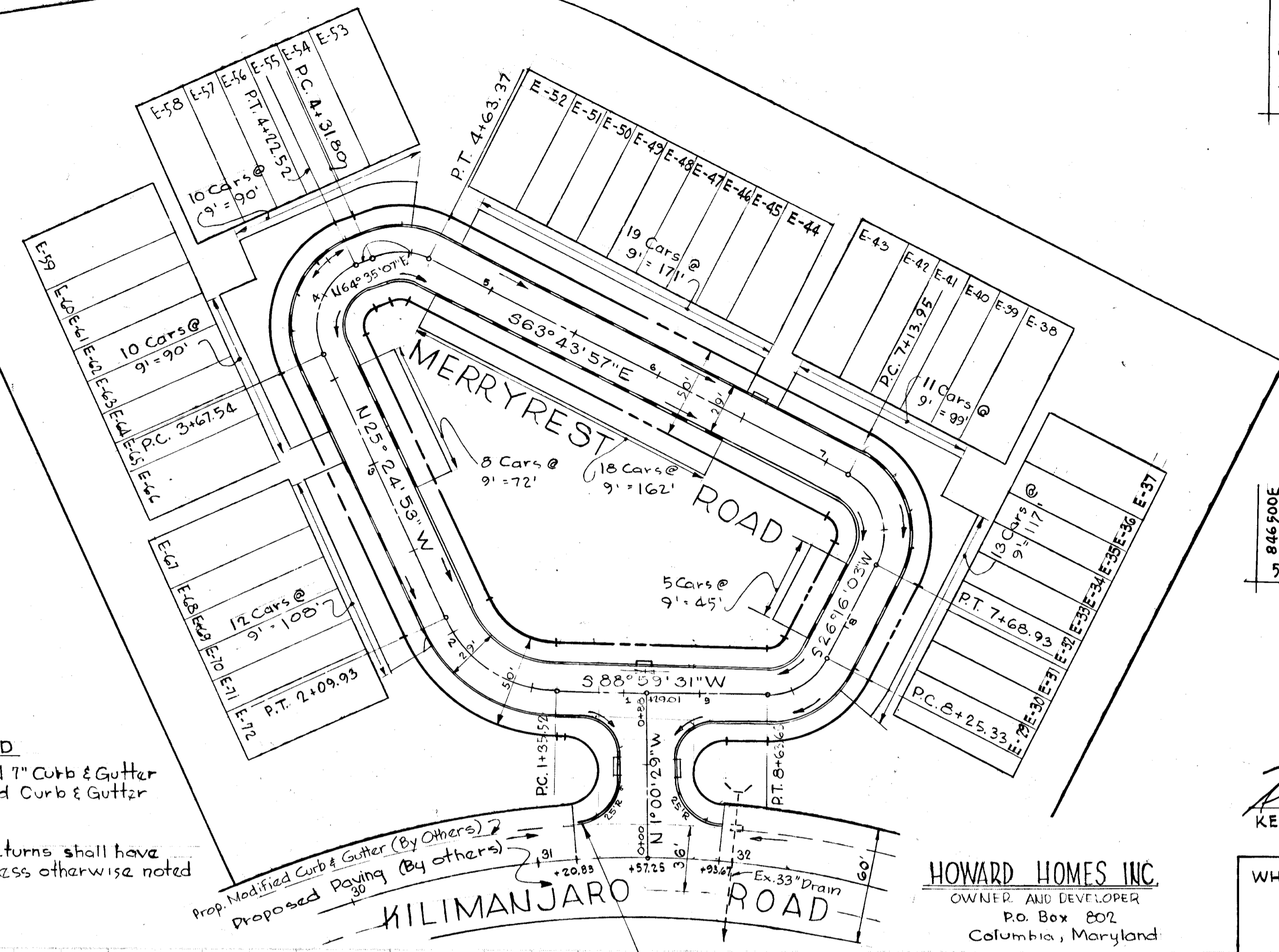


**PLAN**  
Scale: 1"=50'

845770E  
501000N

**LEGEND**  
Standard 7" Curb & Gutter  
Depressed Curb & Gutter

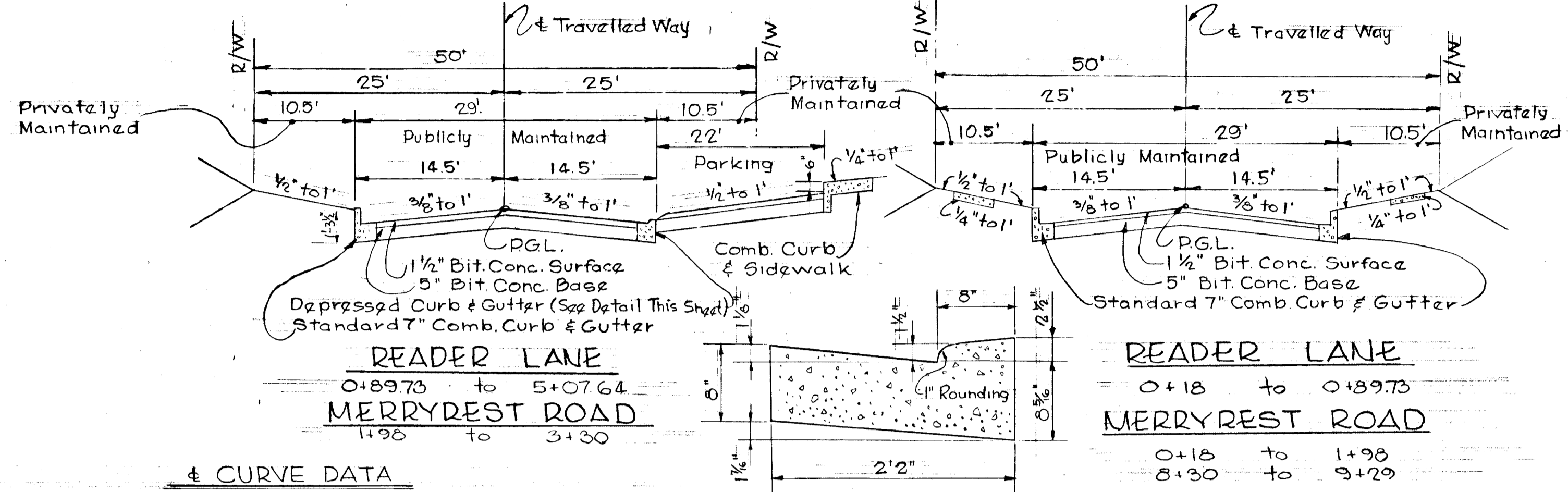
**NOTE:** All street Returns shall have 20' radii unless otherwise noted



**HOWARD HOMES INC.**  
OWNER AND DEVELOPER  
P.O. Box 802  
Columbia, Maryland

**NOTES**

- Std 7" Comb. curb and gutter shall be in accordance with County Standard D-40, Page 95
- Paving (6 1/2") shall be in accordance with County Standard D-11, Page 66
- Transition from Std 7" comb curb and gutter to depressed curb and gutter shall be in accordance with detail shown on Dwg. 1 of 4



**& CURVE DATA**

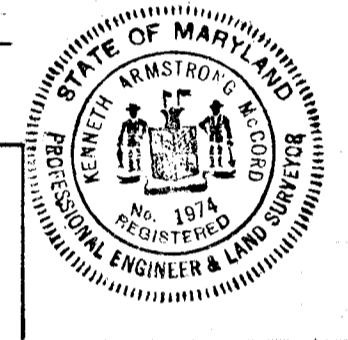
PC	1+35.52	3+67.54	4+31.80	7+13.95	8+25.33
PT	2+09.93	4+22.52	4+63.37	7+68.93	8+63.65
Δ	65°35'36"	90°00'00"	51°40'56"	90°00'00"	62°43'28"
R	65.00	35.00	35.00	35.00	35.00
Arc	74.41	54.98	31.57	54.98	38.32
T	41.88	35.00	16.95	35.00	21.33
Chd Brg	70.42	49.50	30.91	49.50	36.43

Chd Brg N 58°12'41"W N 10°33'07"E S 89°34'25"E S 18°44'57"E S 57°37'47"W

**DEPRESSED CURB AND GUTTER**  
No Scale

*Kenneth A. McCord* 7/8/70  
KENNETH A. MCCORD Date  
Registered Engineer No. 1974

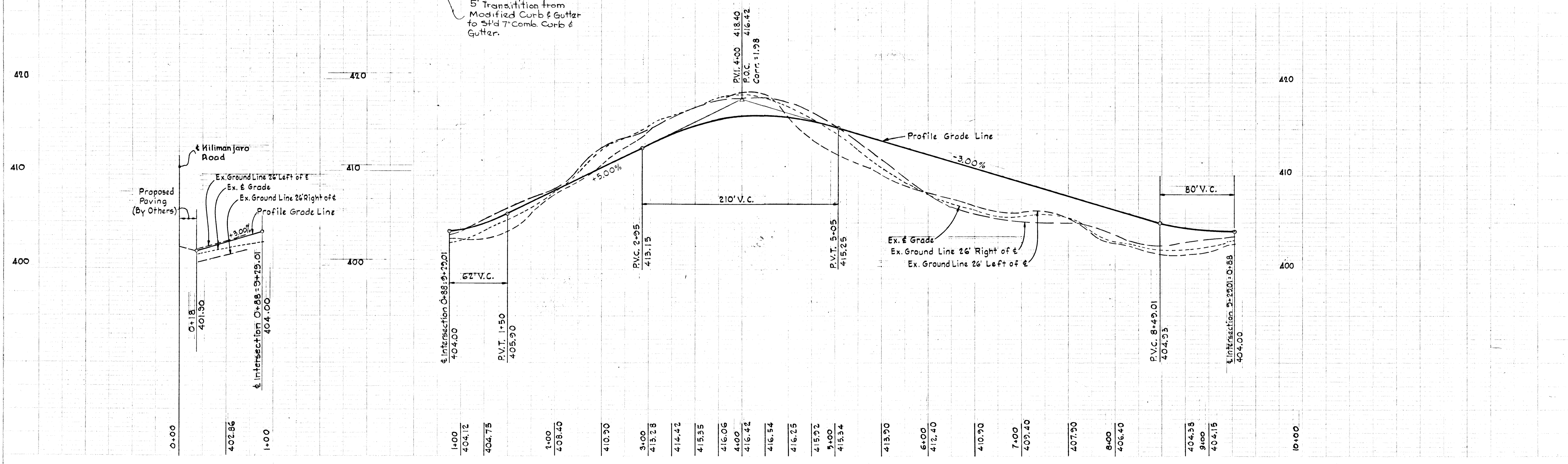
WHITMAN, REQUARDT & ASSOCIATES  
ENGINEERS  
1904 ST. PAUL STREET  
BALTIMORE, MARYLAND



DEPARTMENT OF PUBLIC WORKS  
*S. H. Neeland* 9/21/70  
S. H. NEELAND DATE  
CHIEF BUREAU OF HIGHWAYS  
OFFICE OF PLANNING AND ZONING  
*J. J. Clawson* 9-21-70  
J. J. CLAWSON DATE  
CHIEF ENGINEER, DIVISION OF LAND DEVELOPMENT

REV. DATE	NO.	DESCRIPTION
		COLUMBIA ELECTION DISTRICT NO. 6 HOWARD COUNTY MARYLAND VILLAGE OF OAKLAND MILLS SECTION 2 AREA 4 RESUBDIVISION OF PARCEL "E"
		ROAD GRADE MERRYREST ROAD

Scale: As Shown Date: July 8, 1970 Dwg. No. 2 of 4



#89

F71-0100L July 15, 1970

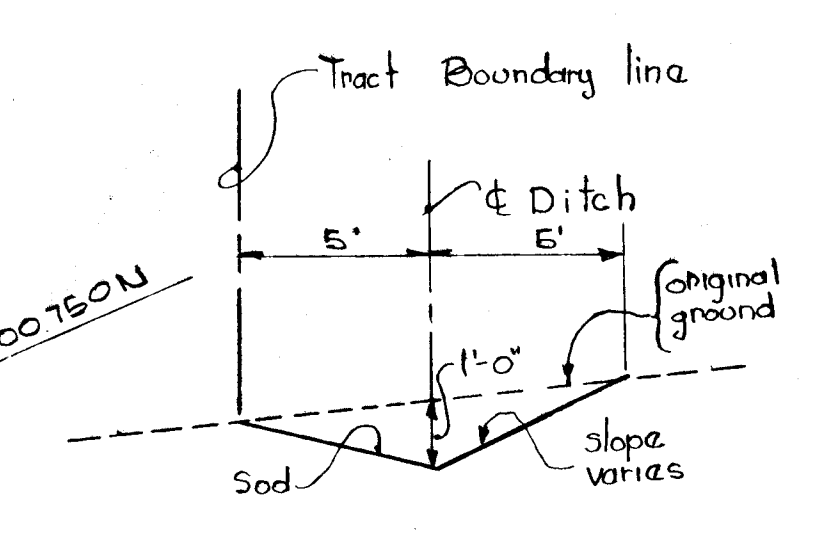
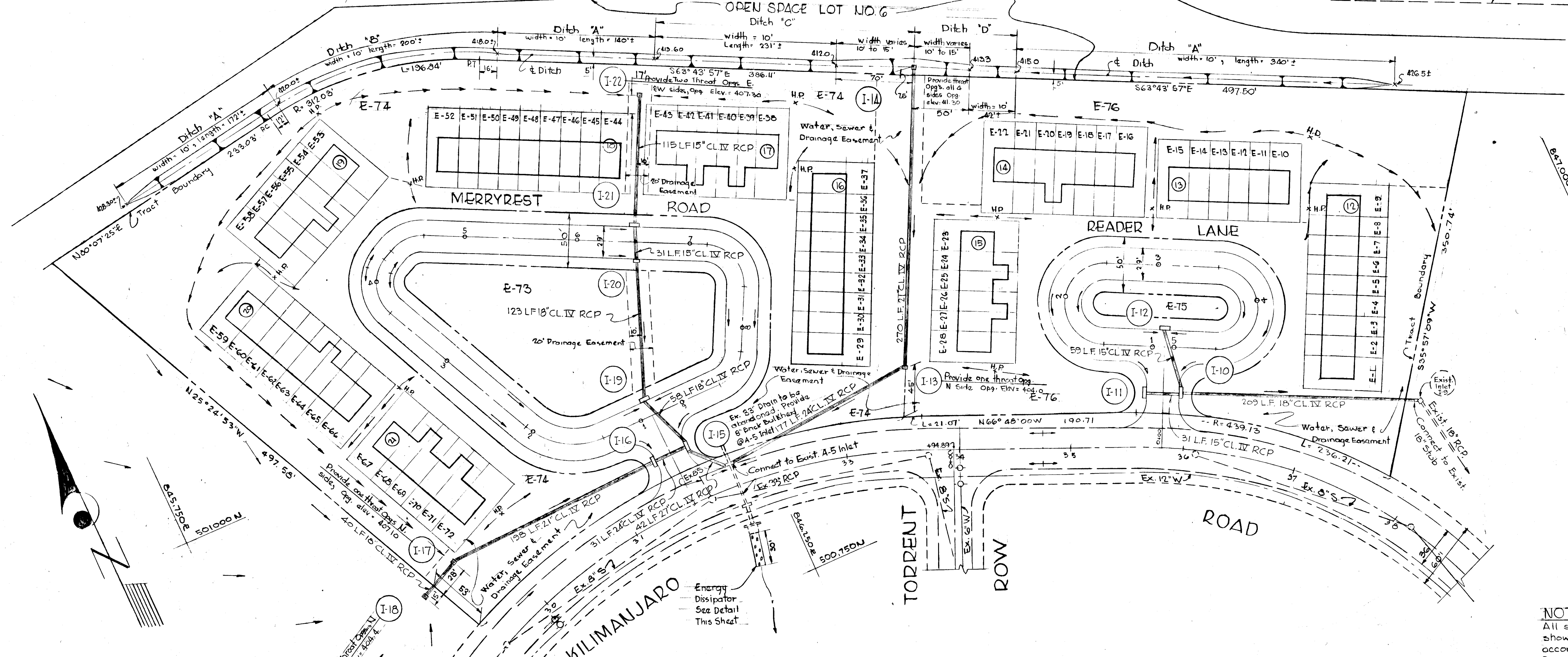


HENRY E. SMITH

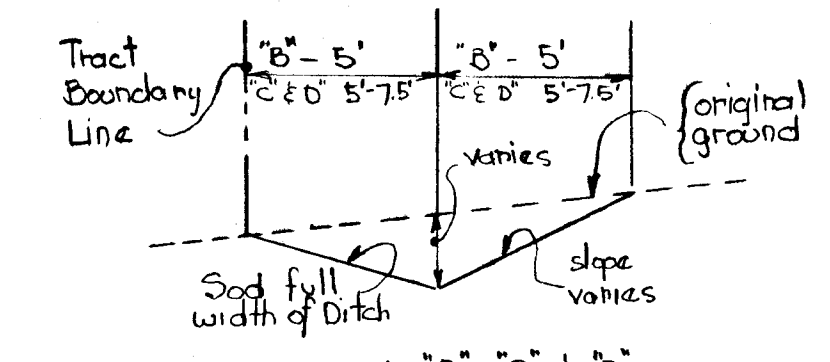
OAKLAND MILLS ROAD

(Existing Paving)

OPEN SPACE LOT NO. 6



DITCH 'A' No Scale



DITCH 'B', 'C' & 'D' No Scale

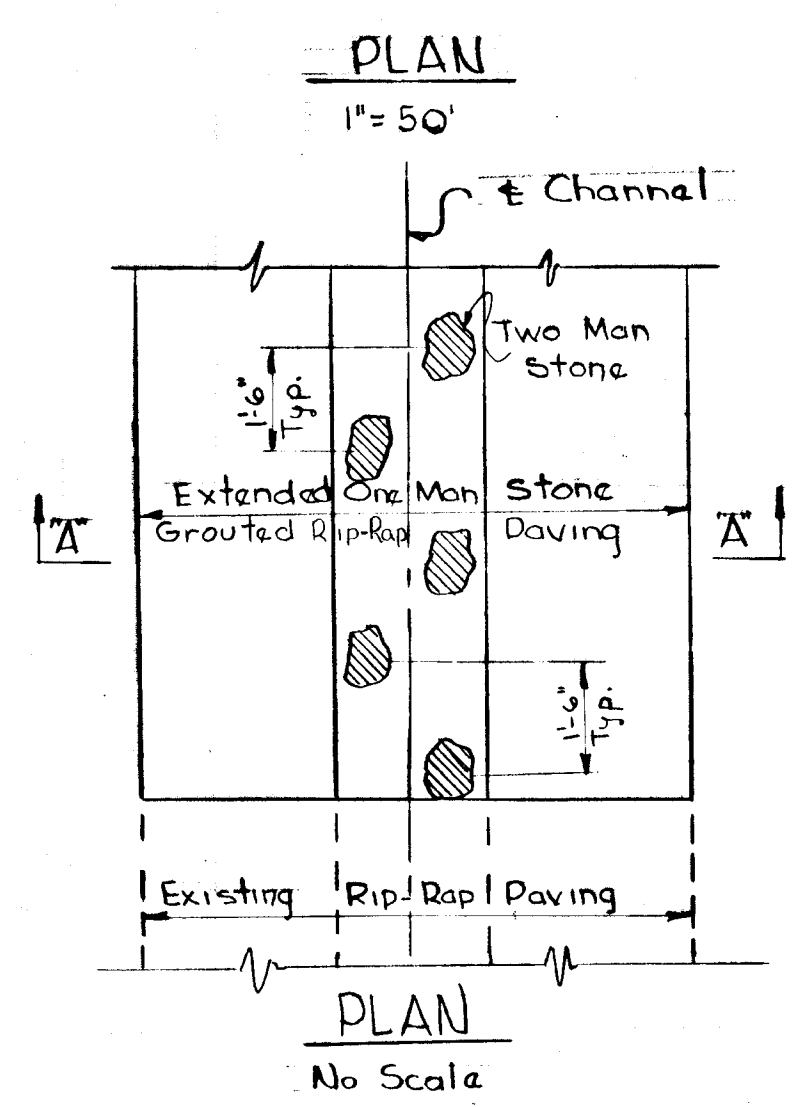
Ditch	Slope	Sod Slopes
'A'	varies	vary
'B'	1.00%	vary
'C'	1.00%	vary
'D'	4.00%	vary

**NOTE**  
 All storm drain pipe and appurtenances as shown on this drawing shall be constructed in strict accordance with Article C-37 in the Howard County Road Construction Code and Standard Specifications.

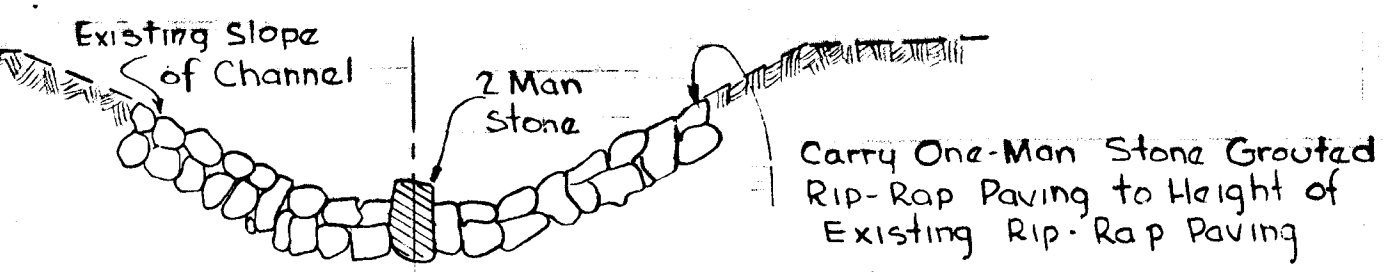
STORM DRAIN STRUCTURE SCHEDULE				
No.	Type	Top Elev. Inv Elev	Location	Howard Co. Std Details
I-10	Std. A-10 Inlet, width=2'-6"	406.60 401.66	± Inlet 15.75' right of ± Sta. 0+50	Dwg. G4-A, page 119-A
I-11	Std. A-10 Inlet, width=2'-6"	406.60 402.16	± Inlet 15.75' left of ± Sta. 0+50	Dwg. G4-A, page 119-A
I-12	Std. A-5 Inlet, width=2'-6"	407.80 403.61	± Inlet 15.75' right of ± Sta. 5+07.64	Dwg. G4-A, page 119-A
I-13	Special "K" Inlet, See Detail *	404.50 399.49	See Plan and Profile	
I-14	Special "K" Inlet, See Detail *	411.50 405.13	See Plan and Profile	
I-15	Std. A-10 Inlet, width=2'-6"	403.10 397.05	± Inlet 15.75' right of ± Sta. 0+50	Dwg. G4-A, page 119-A
I-16	Std. A-10 Inlet, width=2'-6"	403.10 398.73	± Inlet 15.75' left of ± Sta. 0+50	Dwg. G4-A, page 119-A
I-17	Special "K" Inlet, See Detail *	407.50 403.03	See Plan and Profile	
I-18	Special "K" Inlet, See Detail *	400.80 404.16	See Plan and Profile	
I-19	Std. A-5 Inlet, width=2'-6"	404.20 399.53	± Inlet 15.75' right of ± Sta. 9+29.01	Dwg. G4-A, page 119-A
I-20	Std. A-5 Inlet, width=2'-6"	410.20 402.19	± Inlet 15.75' right of ± Sta. 6+54.5	Dwg. G4-A, page 119-A
I-21	Std. A-10 Inlet, width=2'-6"	411.10 402.59	± Inlet 15.75' left of ± Sta. 6+52	Dwg. G4-A, page 119-A
I-22	Special "K" Inlet, See Detail *	407.72 403.02	See Plan and Profile	

KENNETH A. McCORD  
 Registered Engineer No. 1974  
 WHITMAN, REQUARDT & ASSOCIATES  
 ENGINEERS  
 1304 ST. PAUL STREET  
 BALTIMORE, MARYLAND

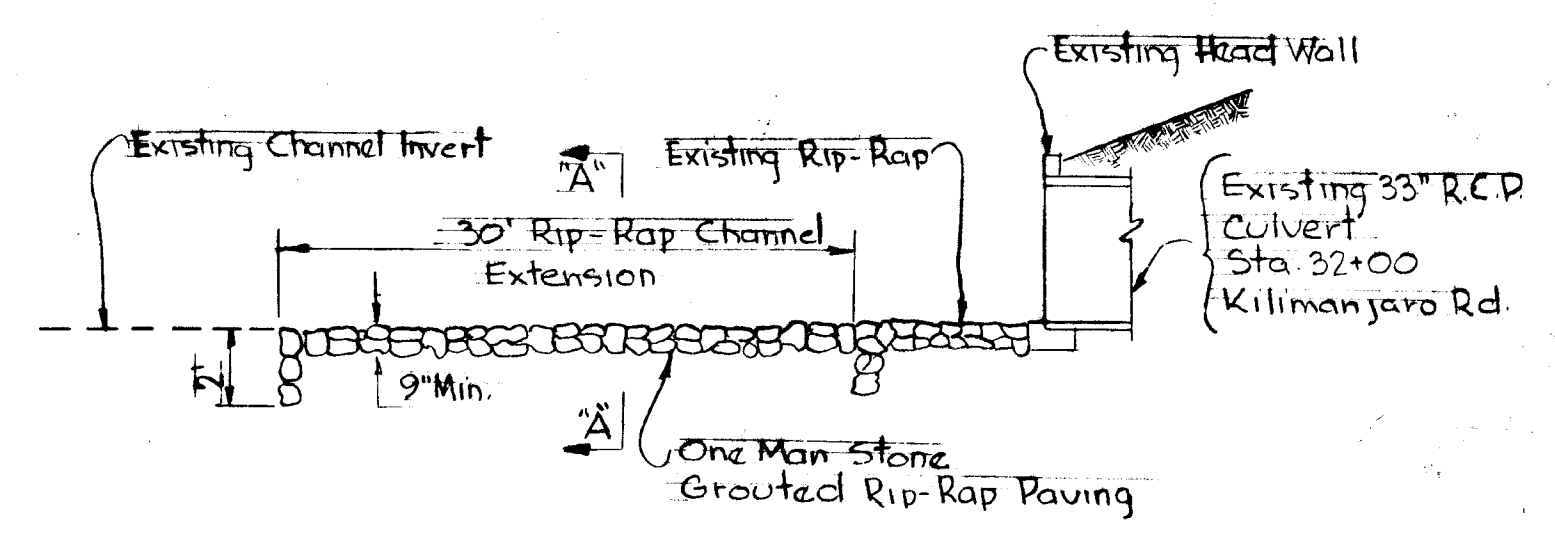
Date: \_\_\_\_\_  
 \* Sheet 4 of 4  
 Kenneth A. McCord  
 (Professional Engineer Seal)



PLAN No Scale



SECTION 'A-A' No Scale



ENERGY DISSIPATOR No Scale

HOWARD HOMES, INC.  
 OWNERS AND DEVELOPERS  
 P.O. BOX 802  
 Columbia, Maryland

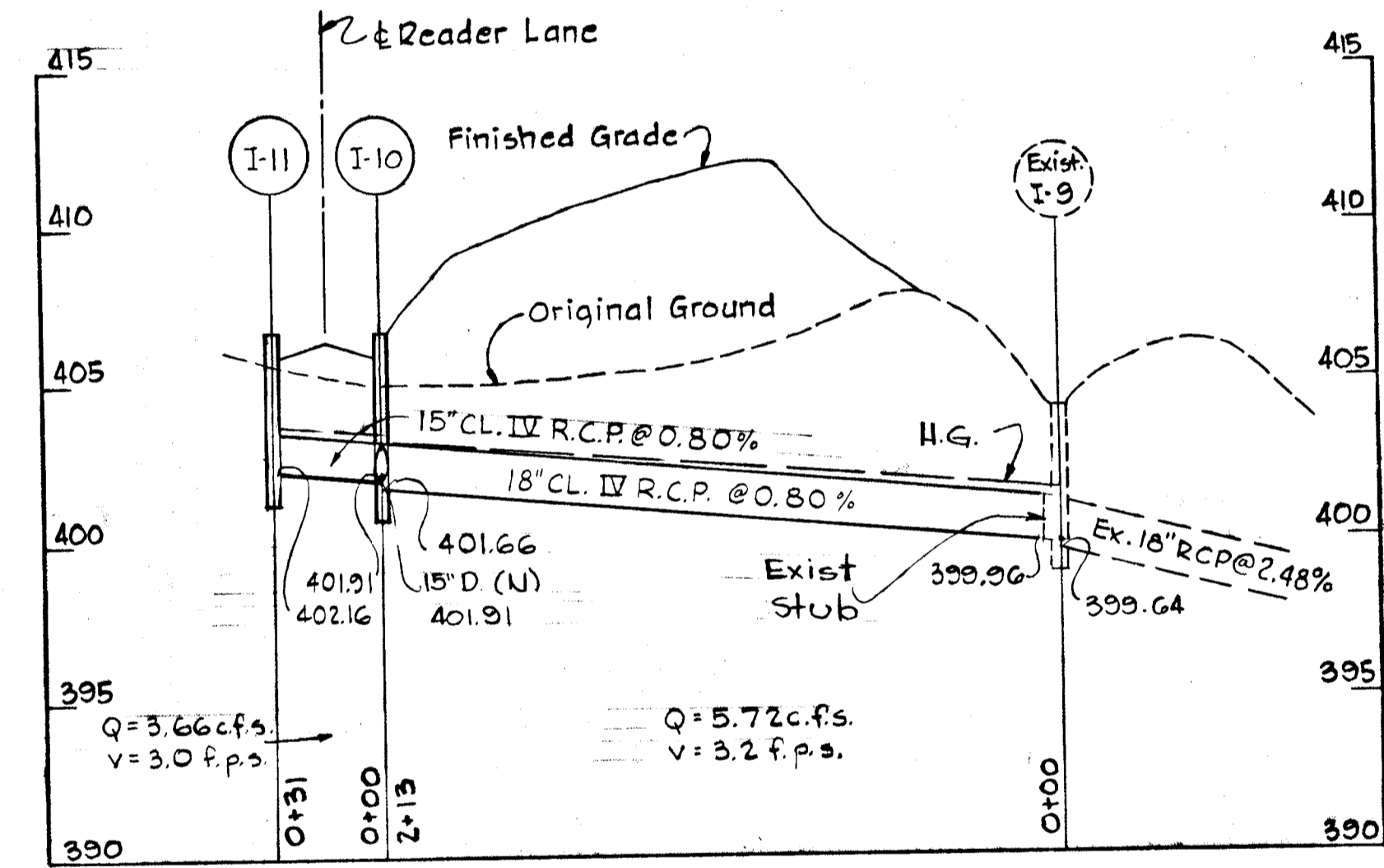
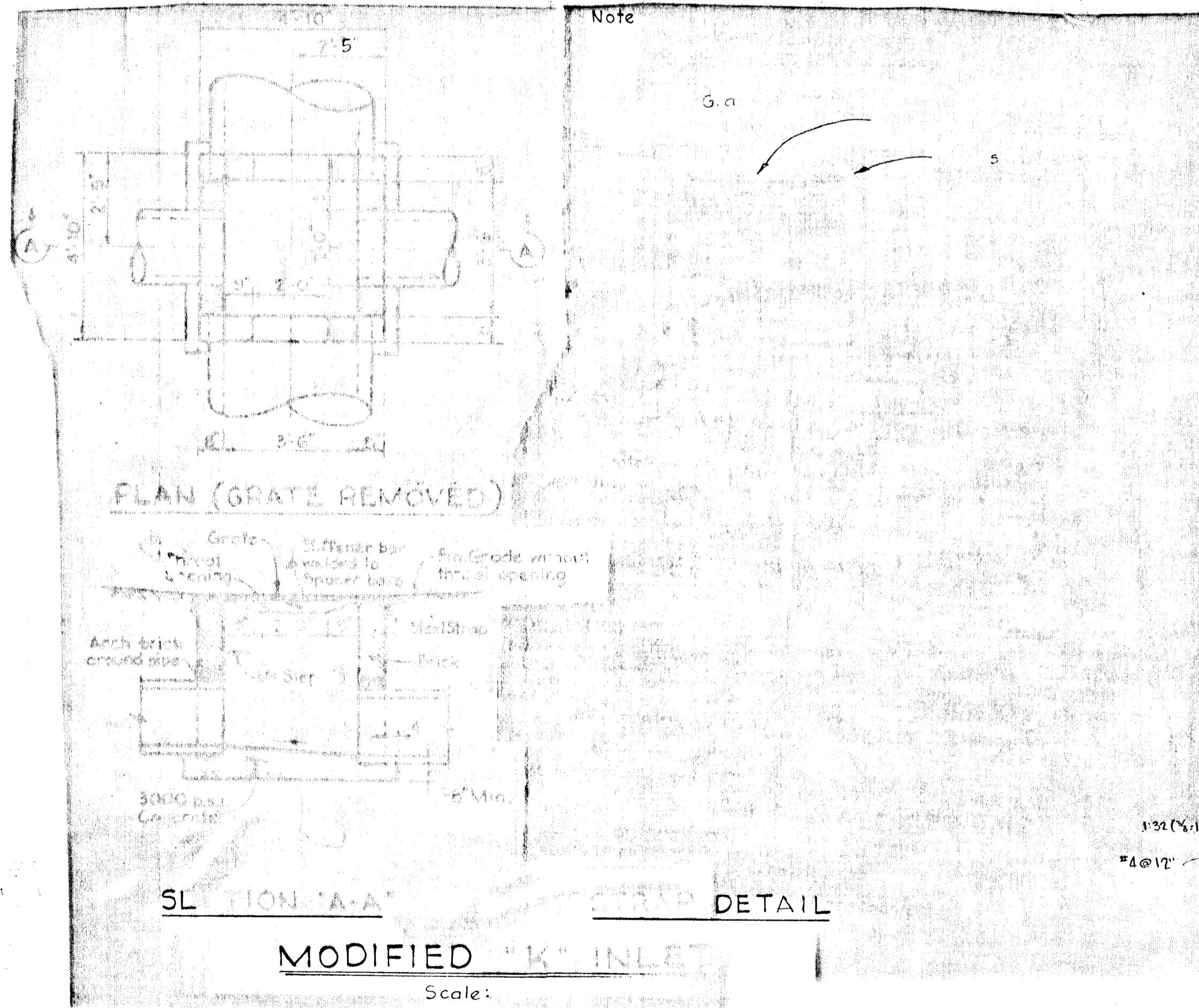
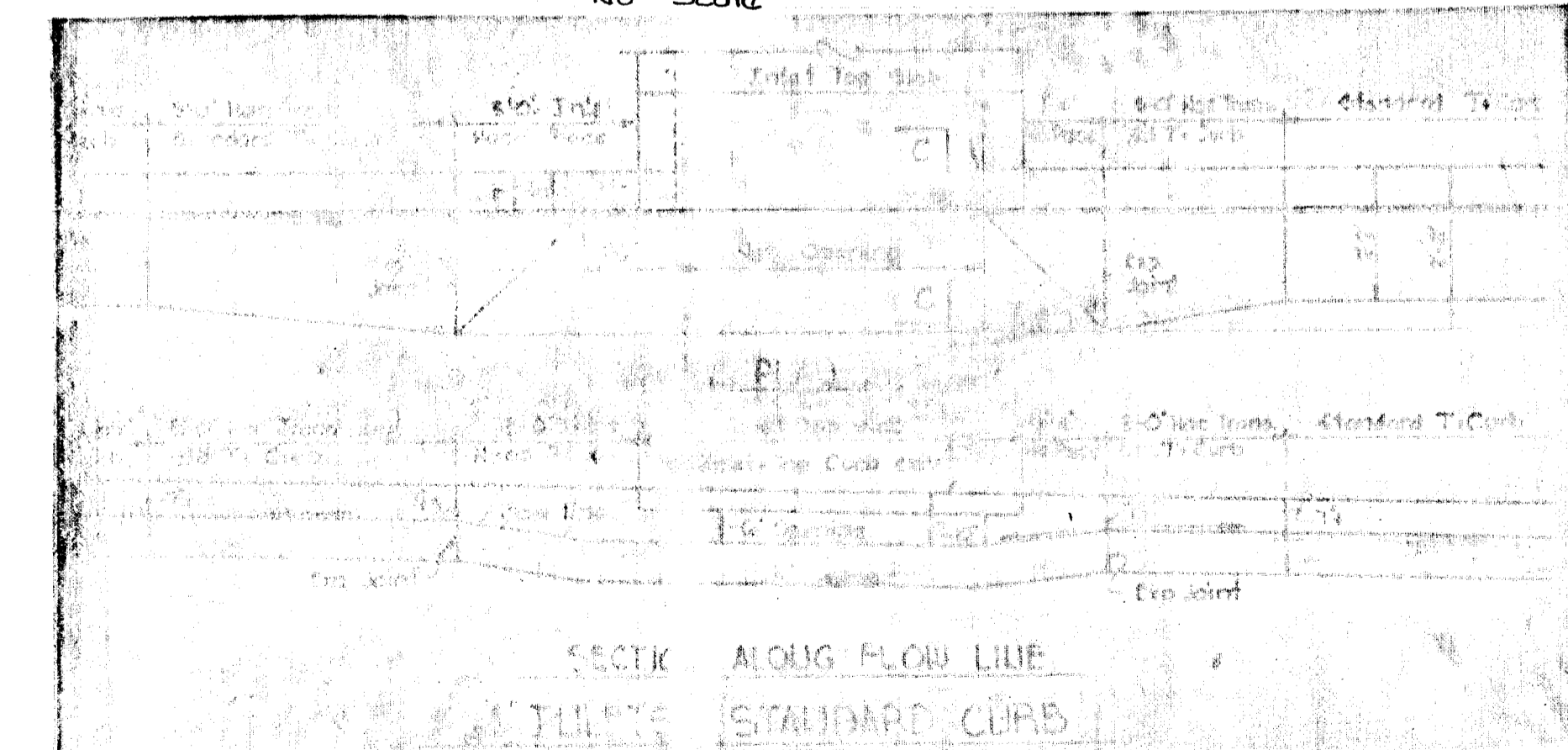
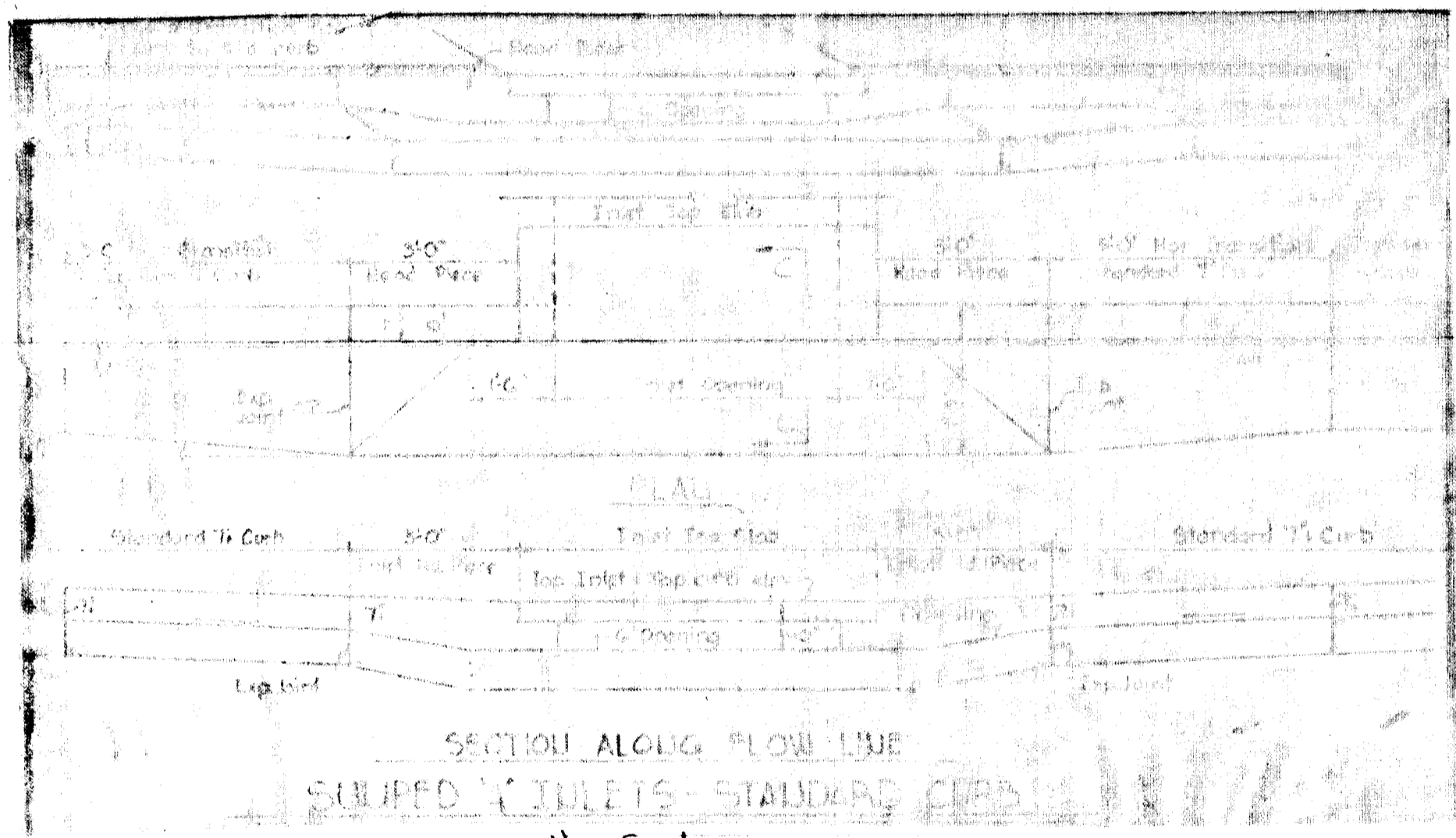
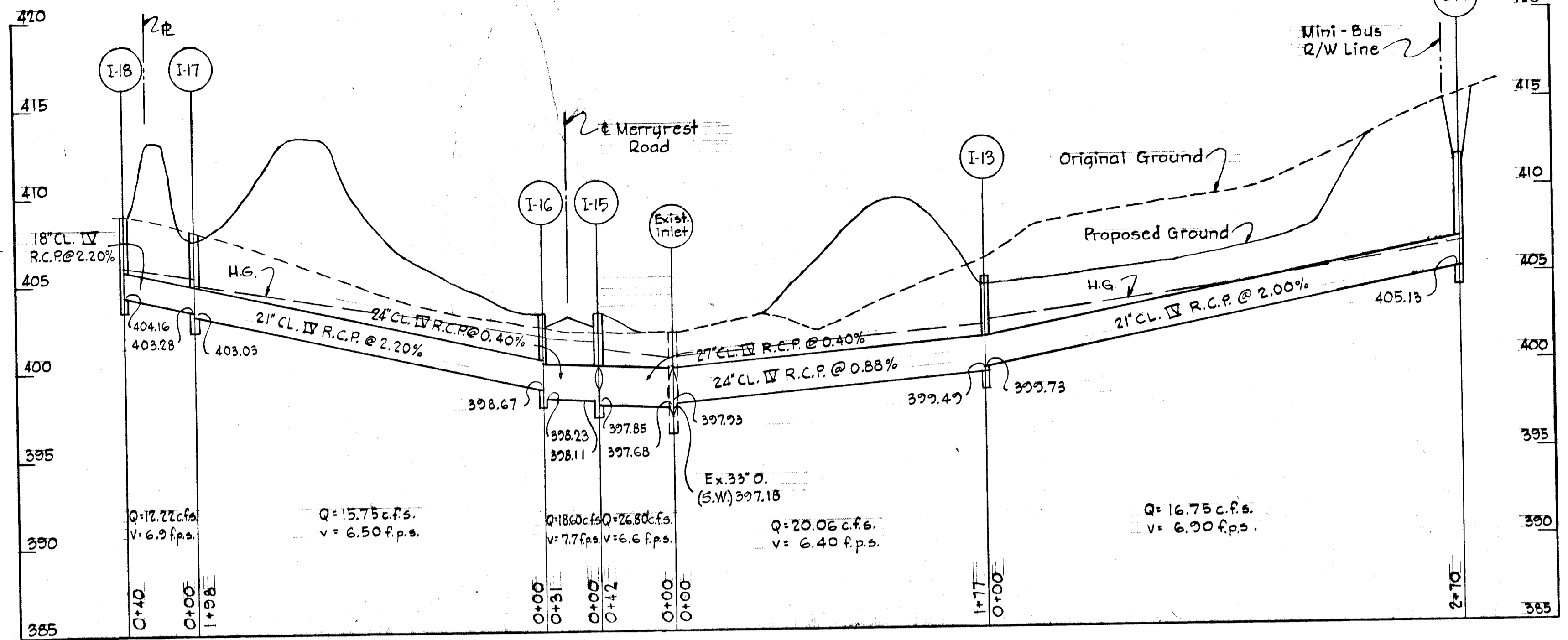
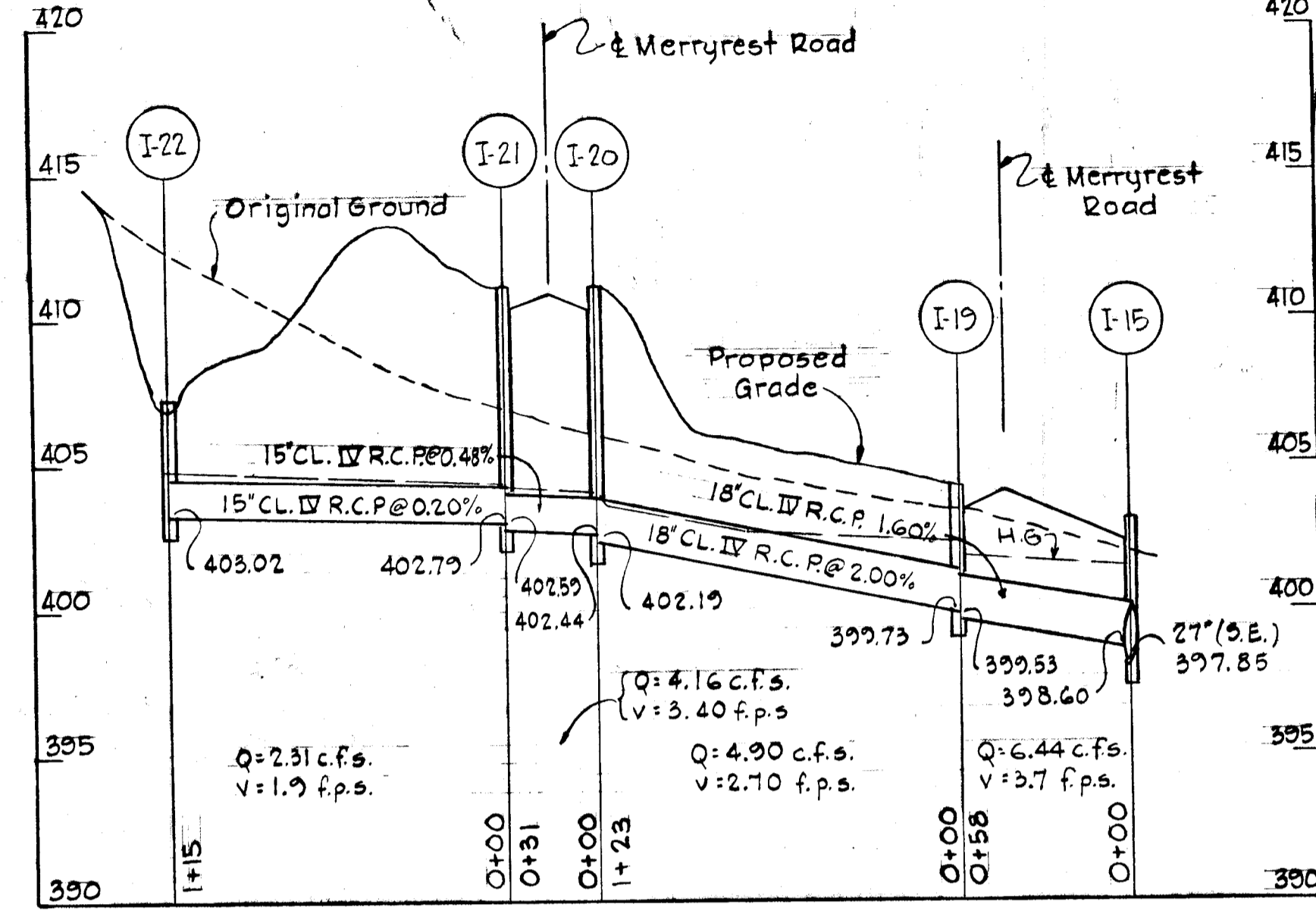
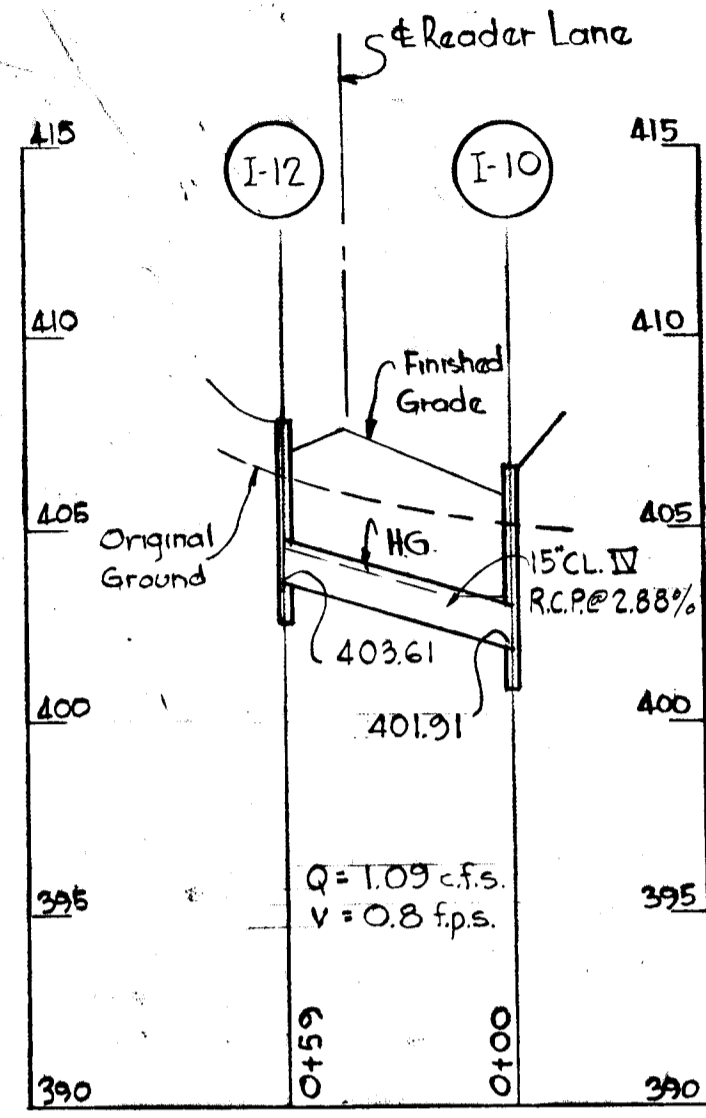
DEPARTMENT OF PUBLIC WORKS  
 S. H. Ireland  
 CHIEF, BUREAU OF HIGHWAYS  
 OFFICE OF PLANNING AND ZONING  
 J. H. Claxton  
 CHIEF ENGINEER, DIVISION OF LAND DEVELOPMENT

9/21/70 DATE

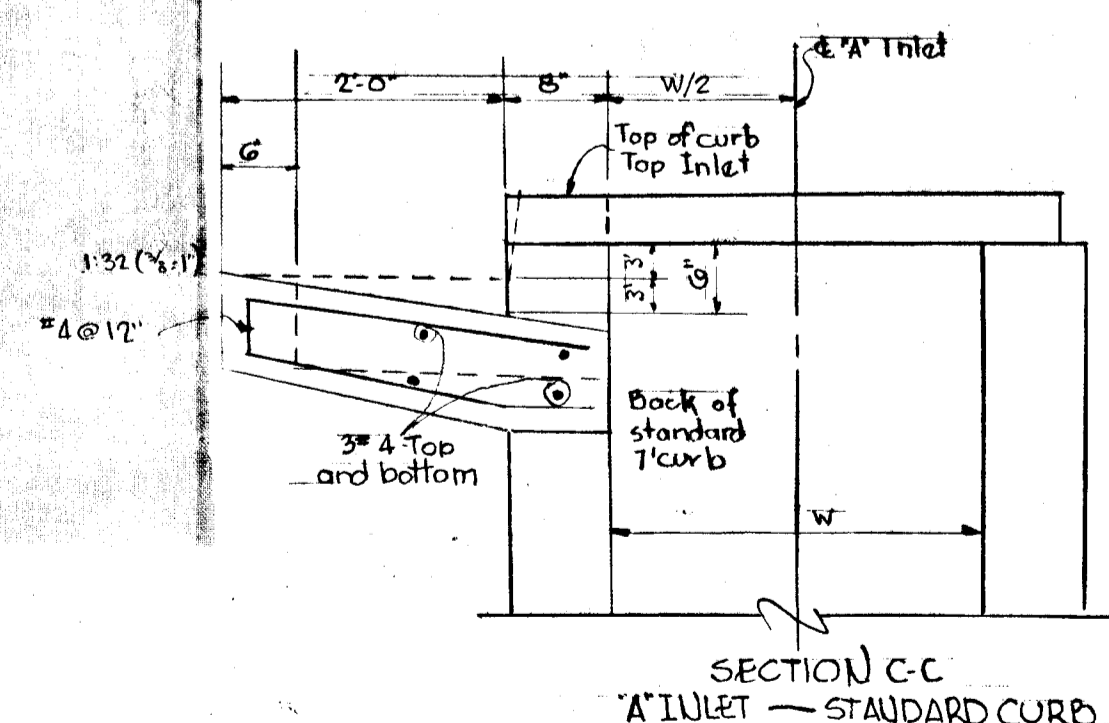
9-21-70 DATE

Rev. Date	No.	Description
		COLUMBIA ELECTION DISTRICT NO. 8 HOWARD COUNTY, MARYLAND
		VILLAGE OF OAKLAND HILLS SECTION 2, AREA 4 RESUBDIVISION OF PARCEL "E"
		STORM DRAINS READER LANE AND MERRYREST ROAD
Scale As Shown	Date: July 8, 1970	Dwg No. 3 of 4

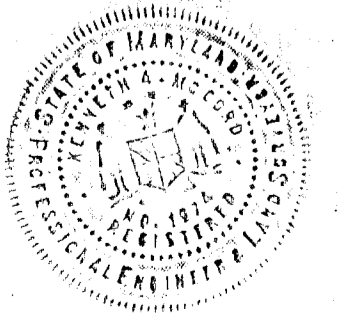




PROFILES  
Scale: Hor. 1"=50'  
Ver. 1"=5'



*Kenneth A. McCord*  
KENNETH A. MCCORD Date  
Registered Engineer No. 1974



WHITMAN, REQUARDT & ASSOCIATES  
ENGINEERS  
1304 ST. PAUL STREET  
BALTIMORE, MARYLAND

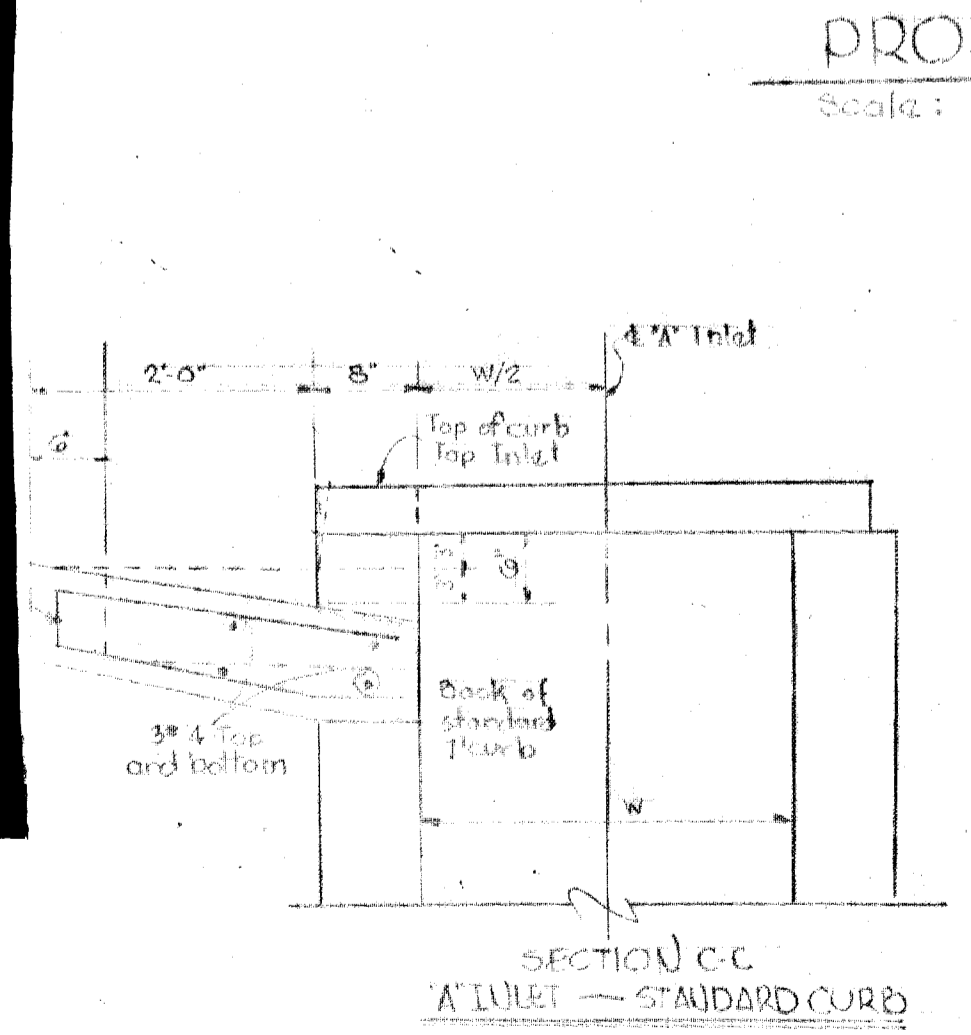
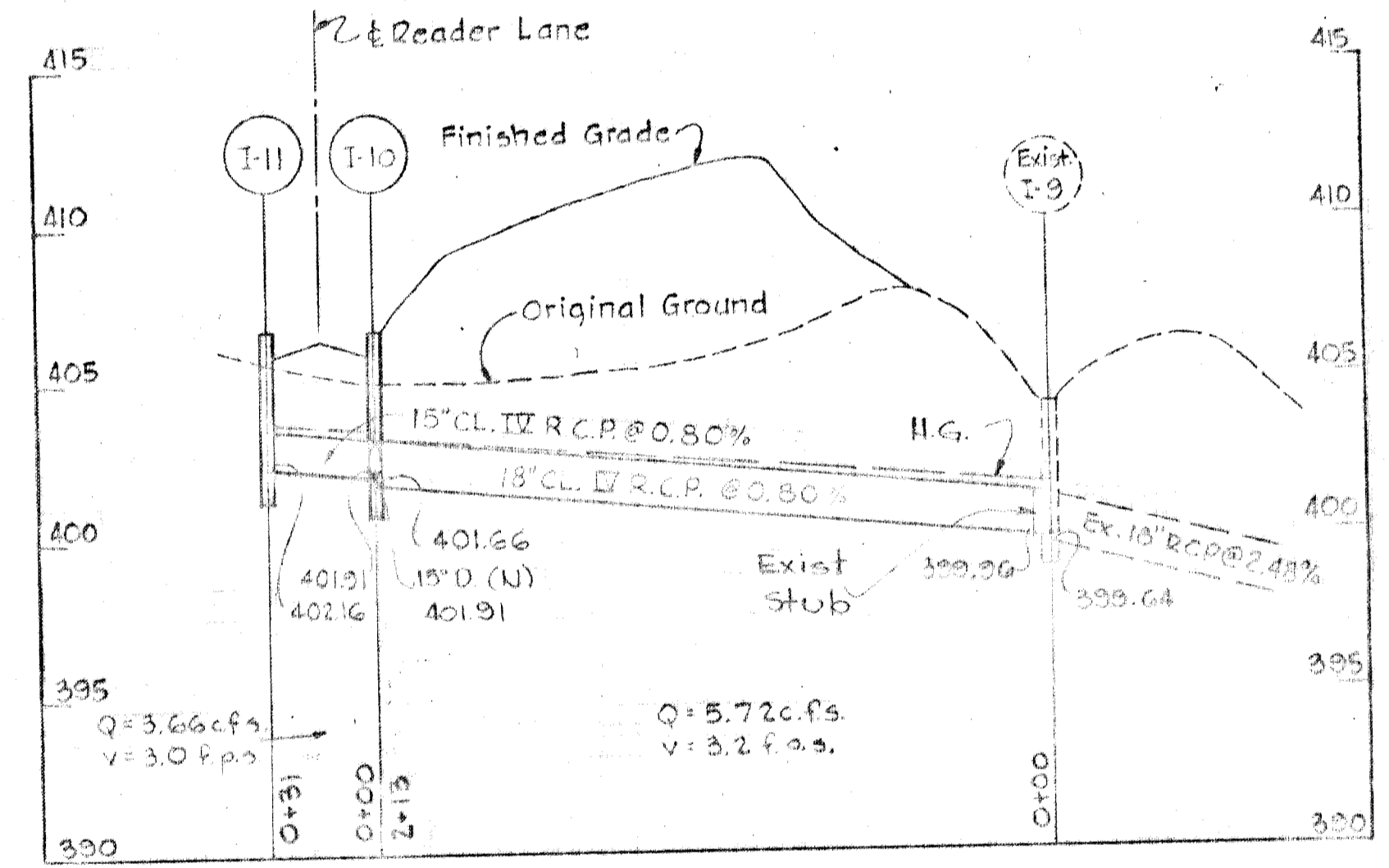
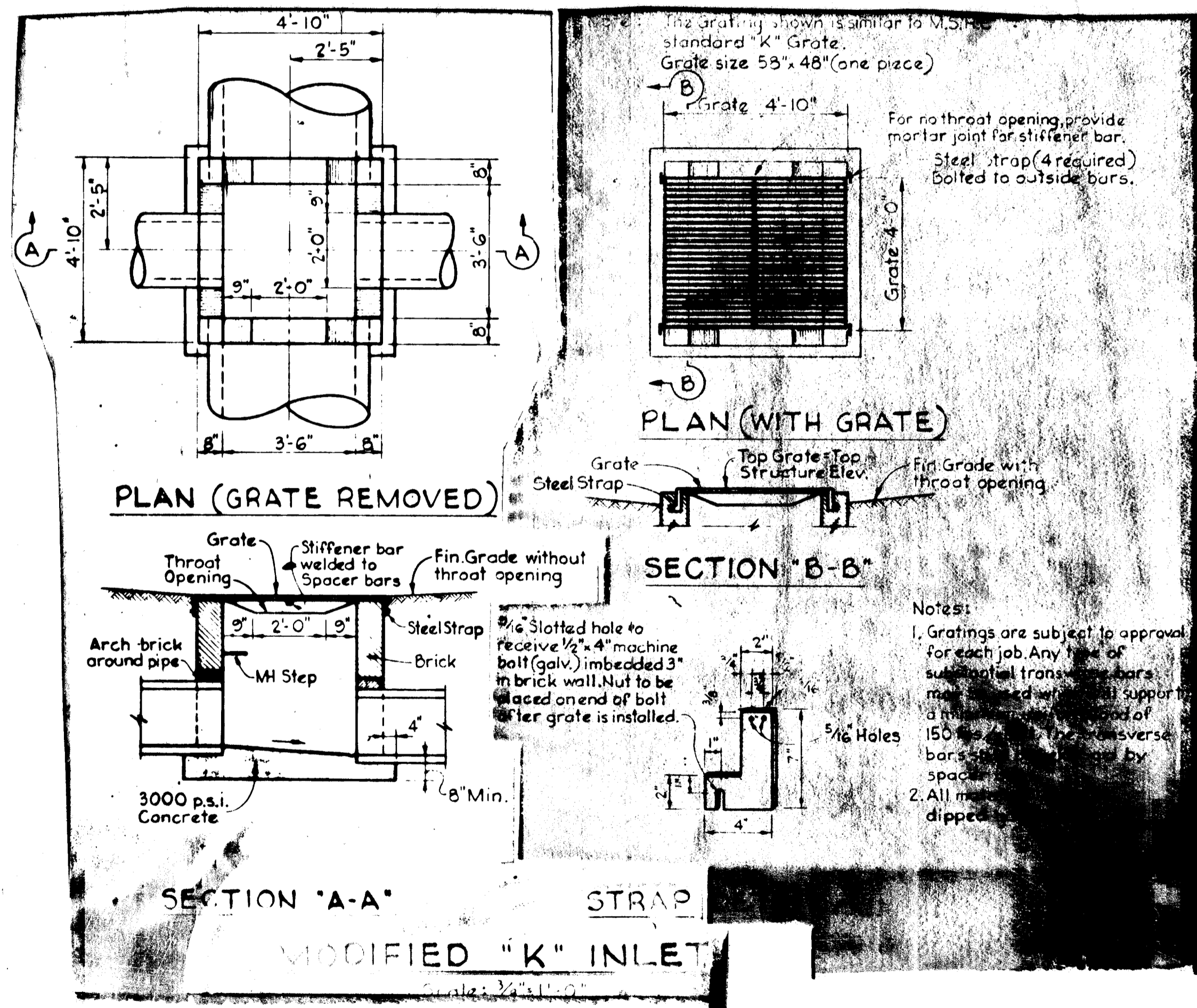
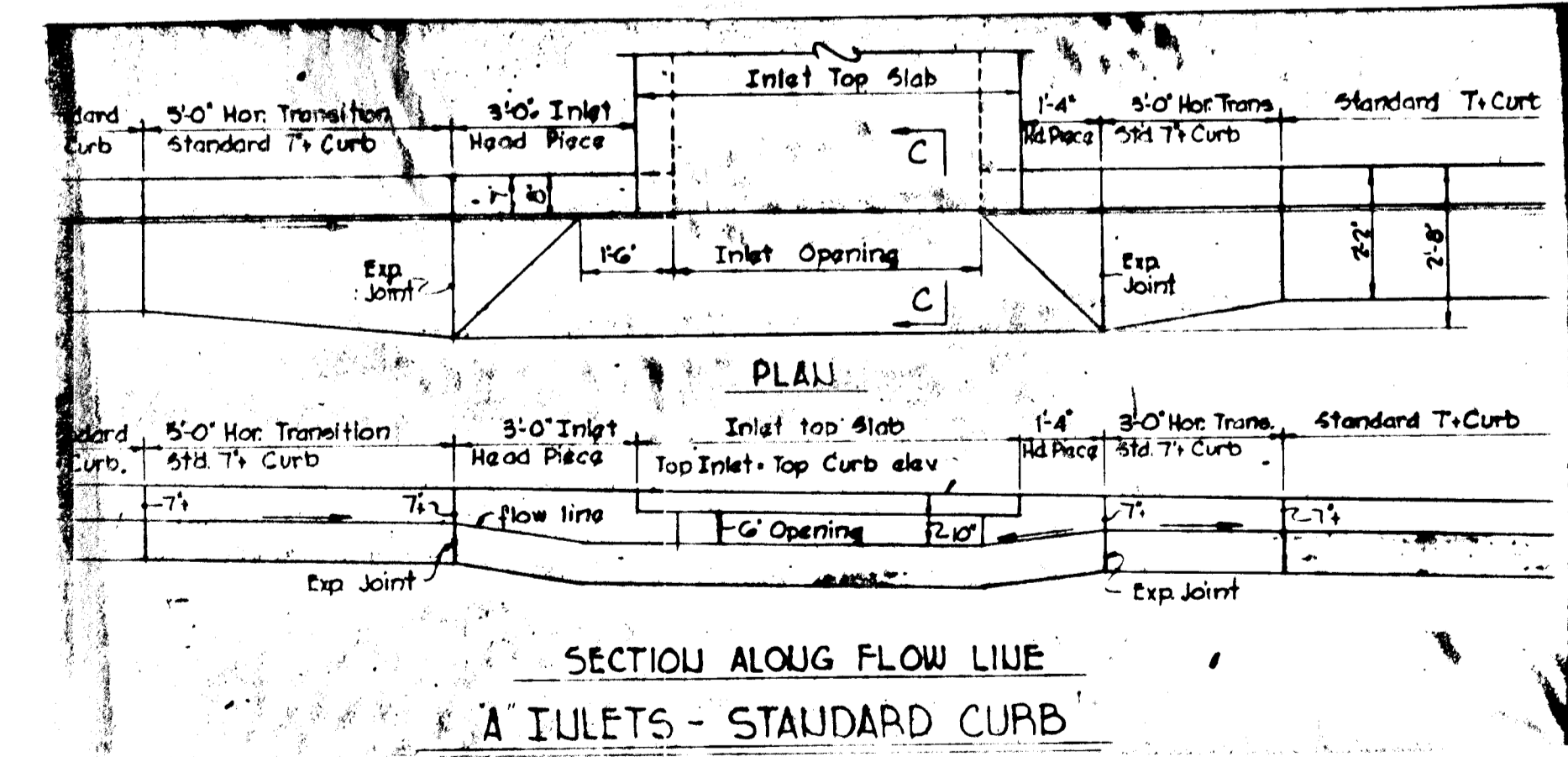
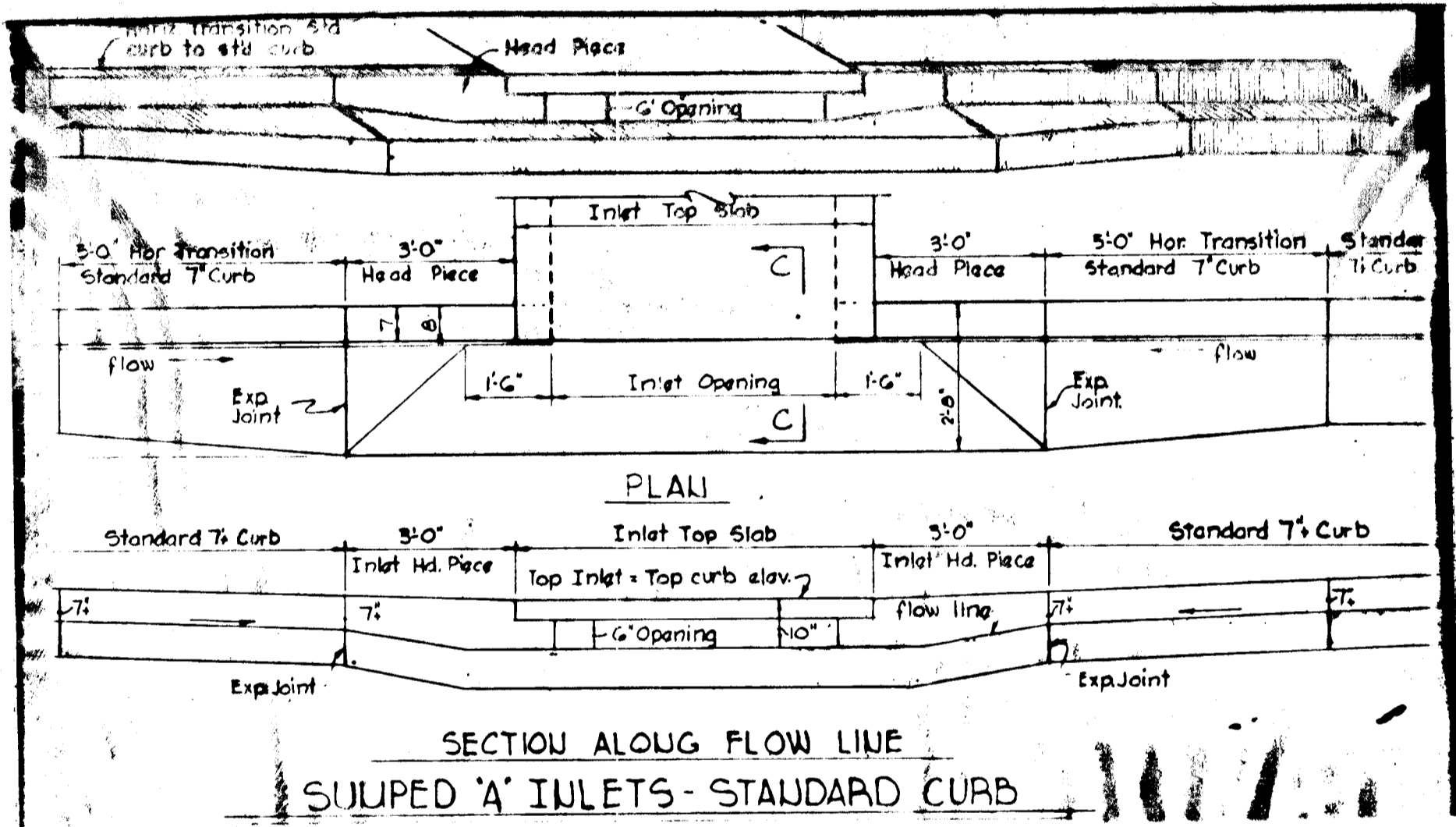
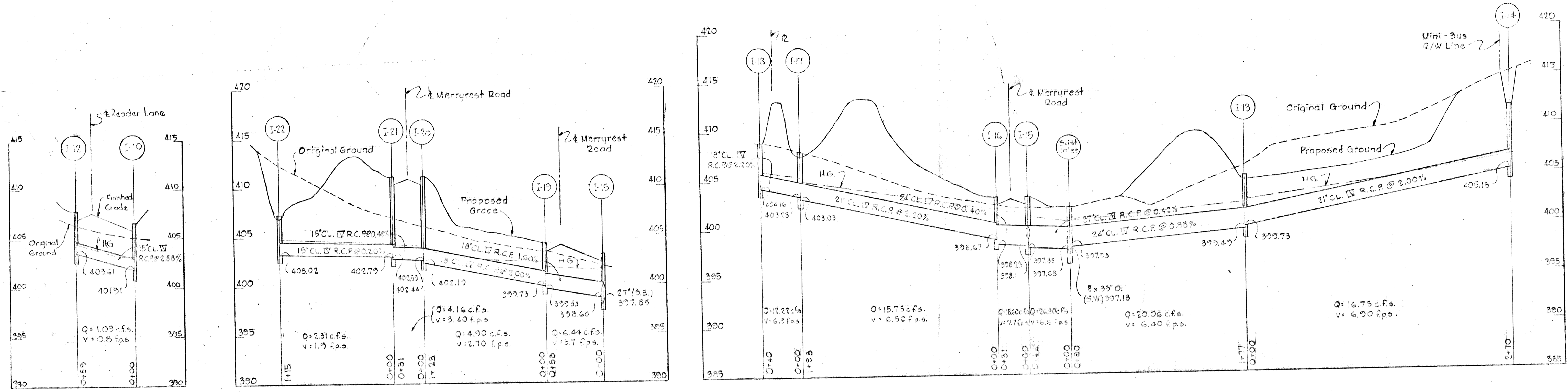
HOWARD HOMES INC.  
OWNER AND DEVELOPER  
P.O. Box 802  
Columbia, Maryland 21025

DEPARTMENT OF PUBLIC WORKS  
*A. J. Heikant*  
CHIEF BUREAU OF HIGHWAYS  
DATE 9/21/70

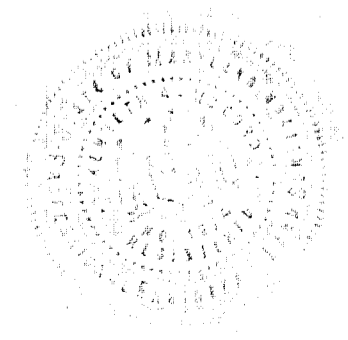
OFFICE OF PLANNING AND ZONING  
*J. H. Clewley*  
CHIEF ENGINEER, DIVISION OF LAND DEVELOPMENT  
DATE 9-21-70

Date	No.	Description
		COLUMBIA ELECTION DISTRICT No. 6 HOWARD COUNTY, MARYLAND
		VILLAGE OF OAKLAND MILLS SECTION 2, AREA 4 RESUBDIVISION OF PARCEL "E"
		STORM DRAINS READER LANE AND MERRYREST ROAD
Scale As Shown	Date: July 8, 1970	Dwg No. 4 of 4





Kenneth A. McCord  
 Registered Engineer No. 1974  
 WHITMAN, REQUARDT & ASSOCIATES  
 ENGINEERS  
 1304 ST. PAUL STREET  
 BALTIMORE, MARYLAND



HOWARD HOMES, INC.  
 OWNER AND DEVELOPER  
 P.O. Box 802  
 Columbia, Maryland 21045

DEPARTMENT OF PUBLIC WORKS  
 Chief Engineer  
 CHIEF BUREAU OF HIGHWAYS  
 OFFICE OF PLANNING AND ZONING  
 CHIEF ENGINEER, DIVISION OF LAND DEVELOPMENT

Date	No.	Description
		COLUMBIA ELECTION DISTRICT NO. 6 HOWARD COUNTY, MARYLAND
		VILLAGE OF OAKLAND MILLS SECTION 2, AREA 4 RESUBDIVISION OF PARCEL "E"
		STORM DRAINS READER LANE AND MERRYREST ROAD
Scale As Shown	Date July 8, 1970	Dwg No. 4 of 4