

VICINITY MAP
SCALE: 1" = 2000'

GENERAL NOTES

1. TOWNHOUSES FOR SALE ONLY
2. LOTS D-1 TO D-102, ARE TO BE OWNED & MAINTAINED BY COMMUNITY ASSOCIATION.
3. AREAS OF STREET & PARKING SHOWN WITHIN THE LIMITS OF LOT D-101 & D-102 ARE TO BE OWNED & MAINTAINED BY COMMUNITY ASSOCIATION.
4. ALL PARKING SPACES TO BE 10' X 20' (200# MIN.)
5. HOWARD COUNTY WILL BE RESPONSIBLE FOR THE MAINTENANCE OF 30' WIDE PAVED AREA IN DEDICATED RIGHT OF WAY ONLY.

SITE ANALYSIS

1. ZONING = APARTMENT (ATTACHED LAND USE)
2. TOTAL AREA = 10.652 ACRES ±
PUBLIC DEDICATION = 2.00 AC. ±
NET AREA = 8.652 AC. ±
3. NUMBER OF UNITS ALLOWED = 106.
4. NUMBER OF UNITS SHOWN = 100.
5. NUMBER OF PARKING SPACES REQ'D = 200.
6. NUMBER OF PARKING SPACES SHOWN = 200.
7. PROPOSED PUBLIC WATER & SEWER SYSTEMS.
8. NUMBER OF LOTS SHOWN:
RESIDENTIAL LOTS = 100
COMMUNITY LOTS = 2
TOTAL LOTS = 102

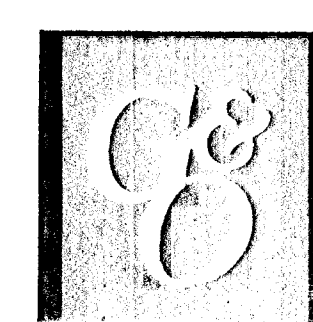
DEPARTMENT OF PUBLIC WORKS
Danielle M. Weiland 9-4-70
CHIEF, BUREAU OF HIGHWAYS DATE
OFFICE OF PLANNING & ZONING
J.H. Clawson 9-3-70
CHIEF ENGINEER, DIVISION OF LAND DEVELOPMENT

A=2.24Ac N SCHOOL 100%
C=0.60

A=3.4Ac M SCHOOL 100%
C=0.60

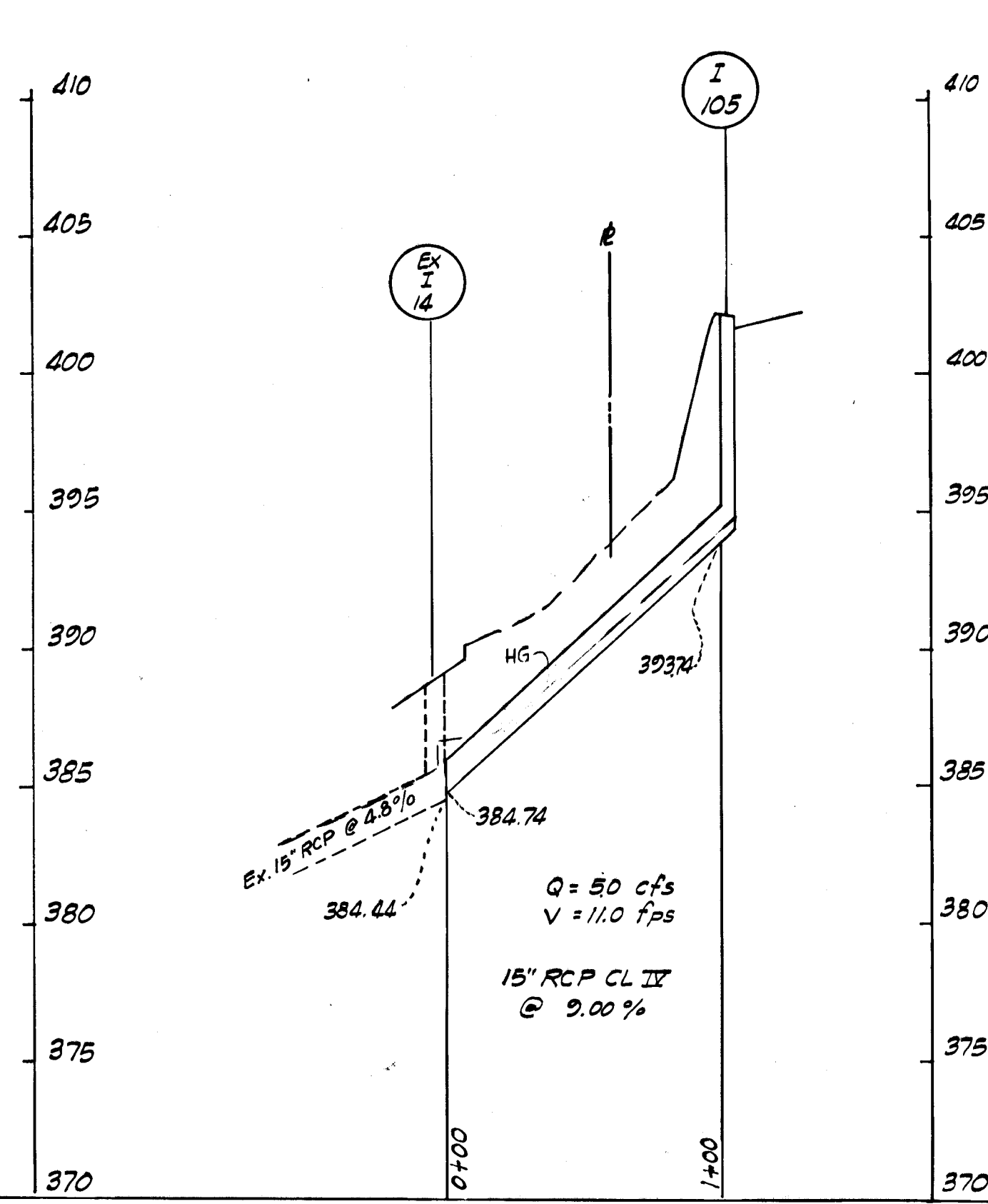
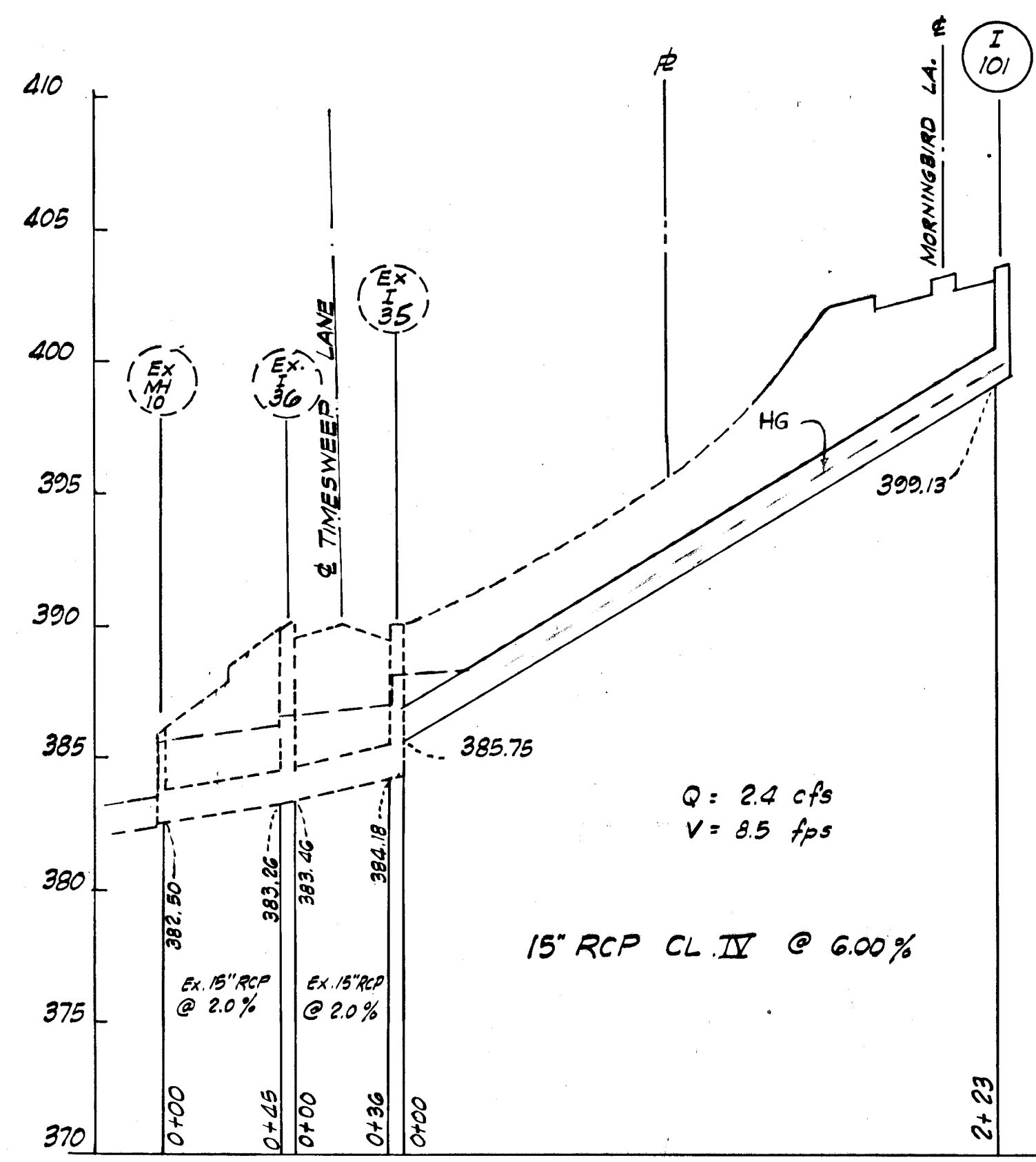
F-70-96

No.	REVISION	DATE	BY



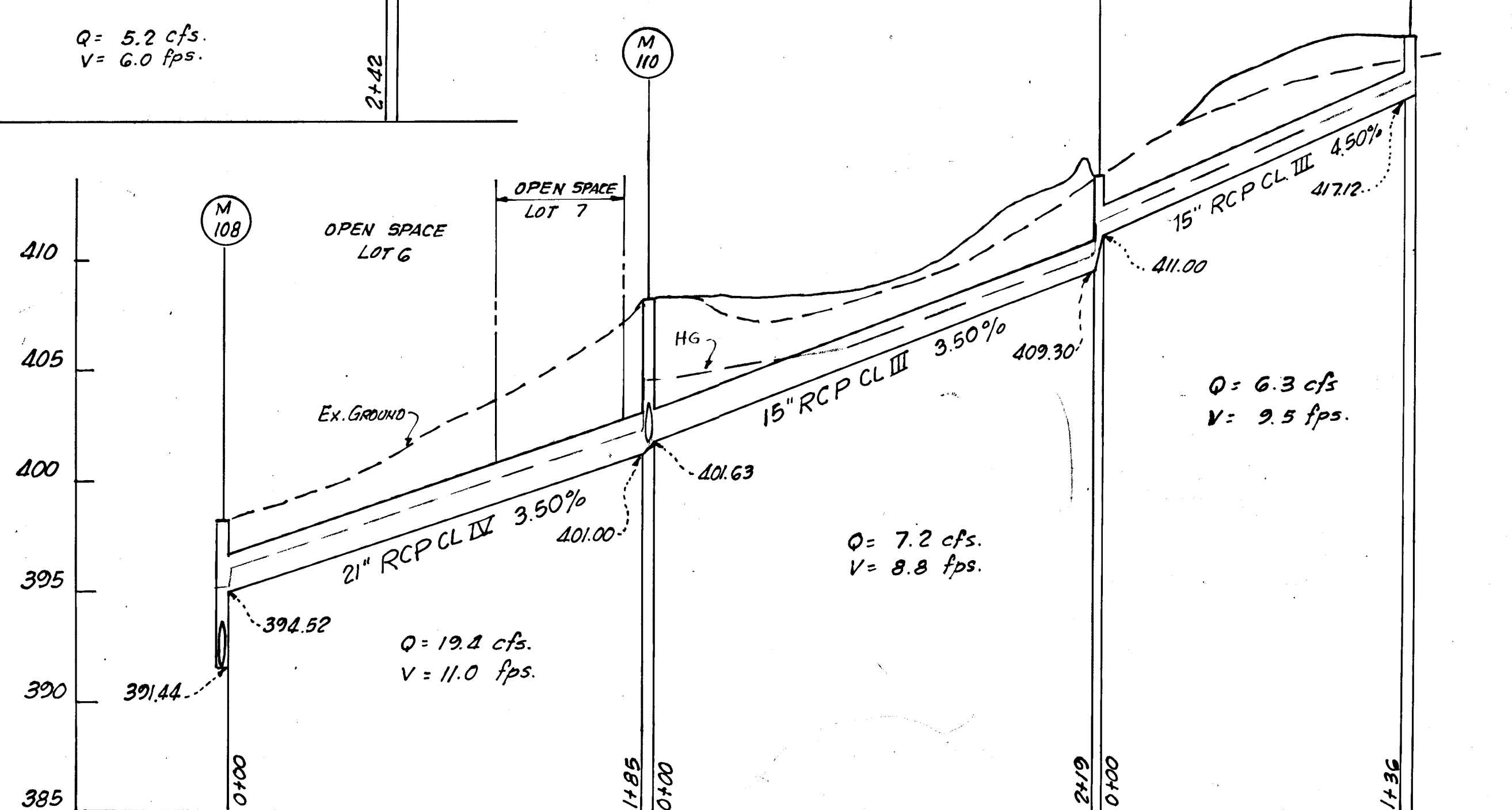
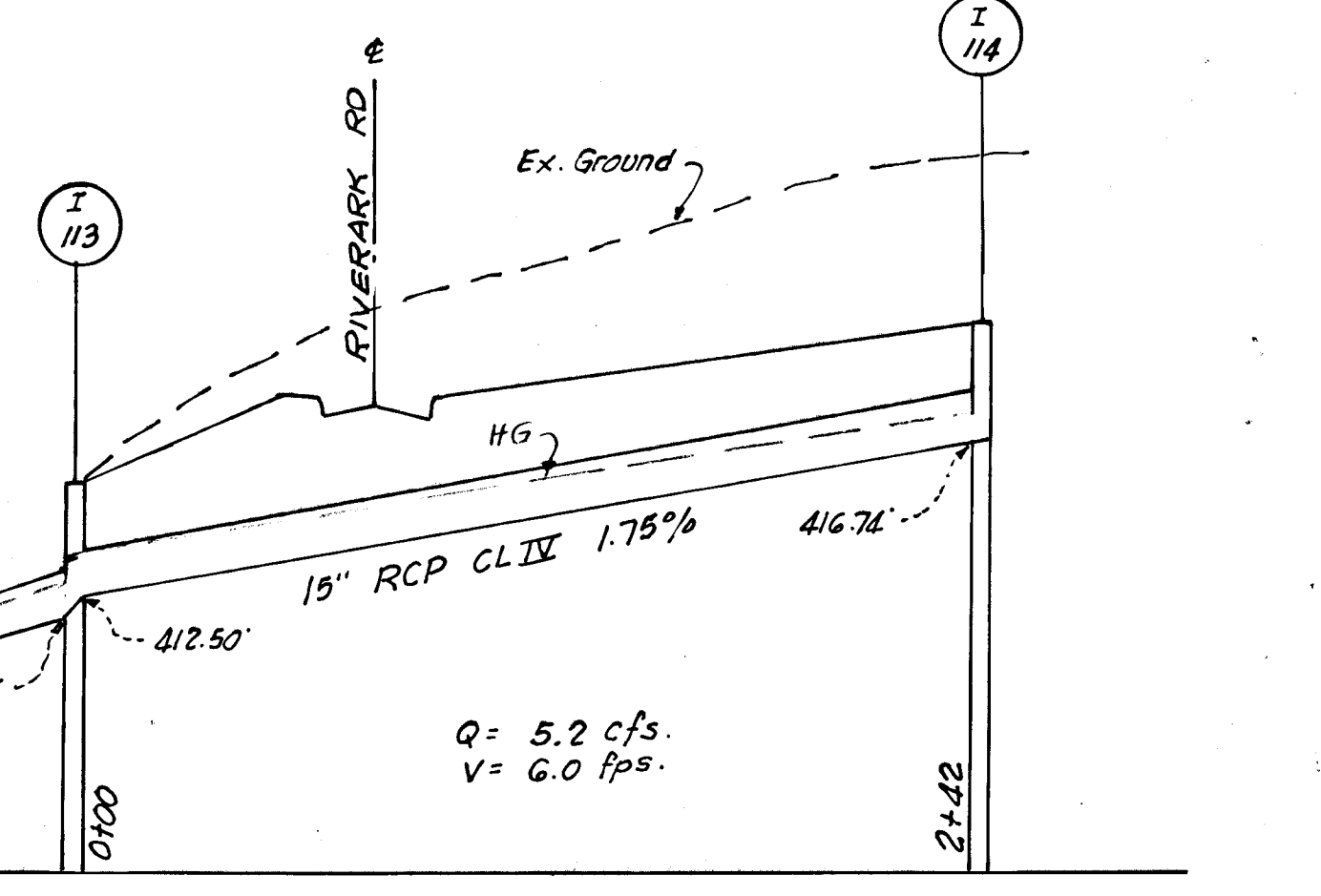
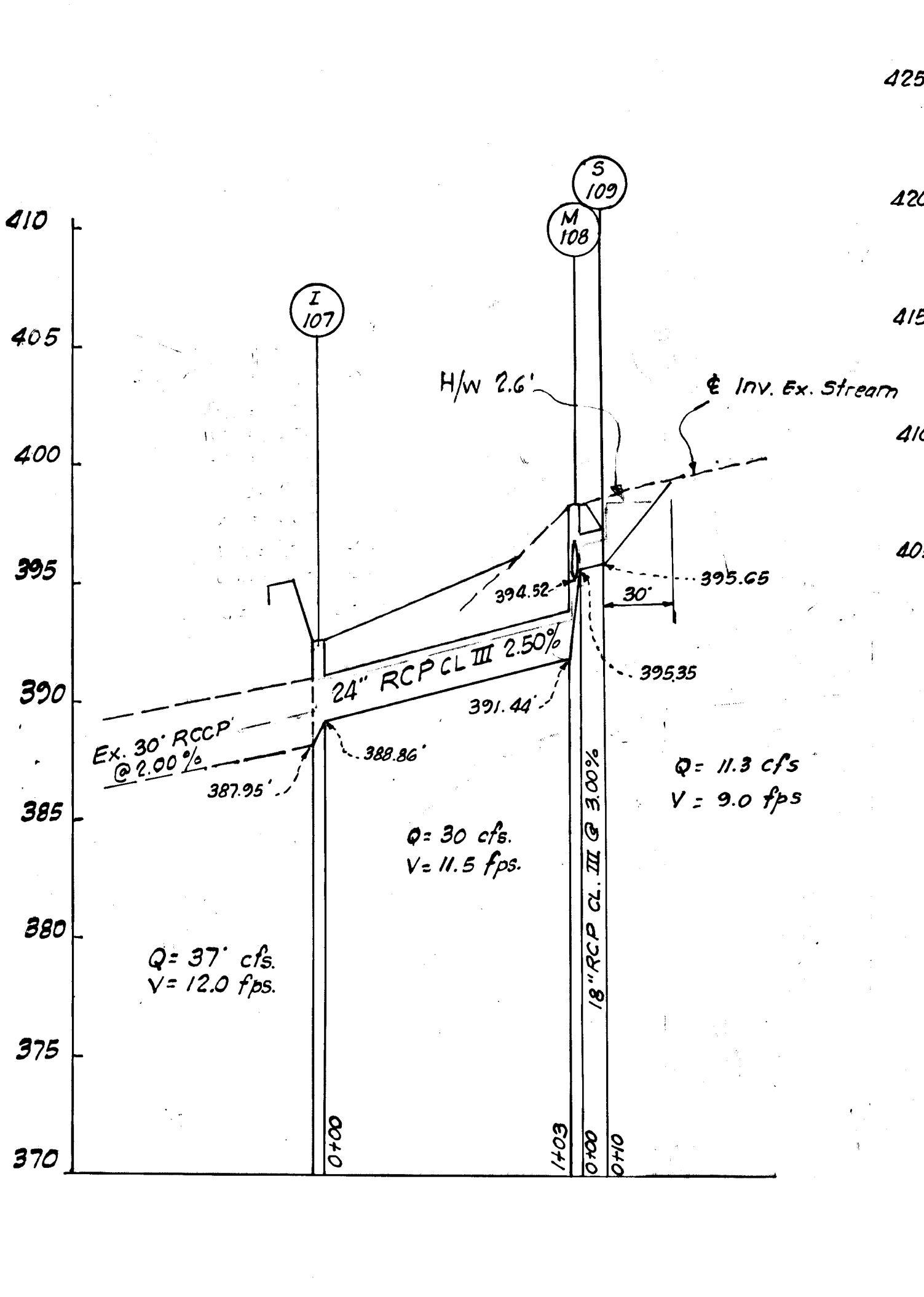
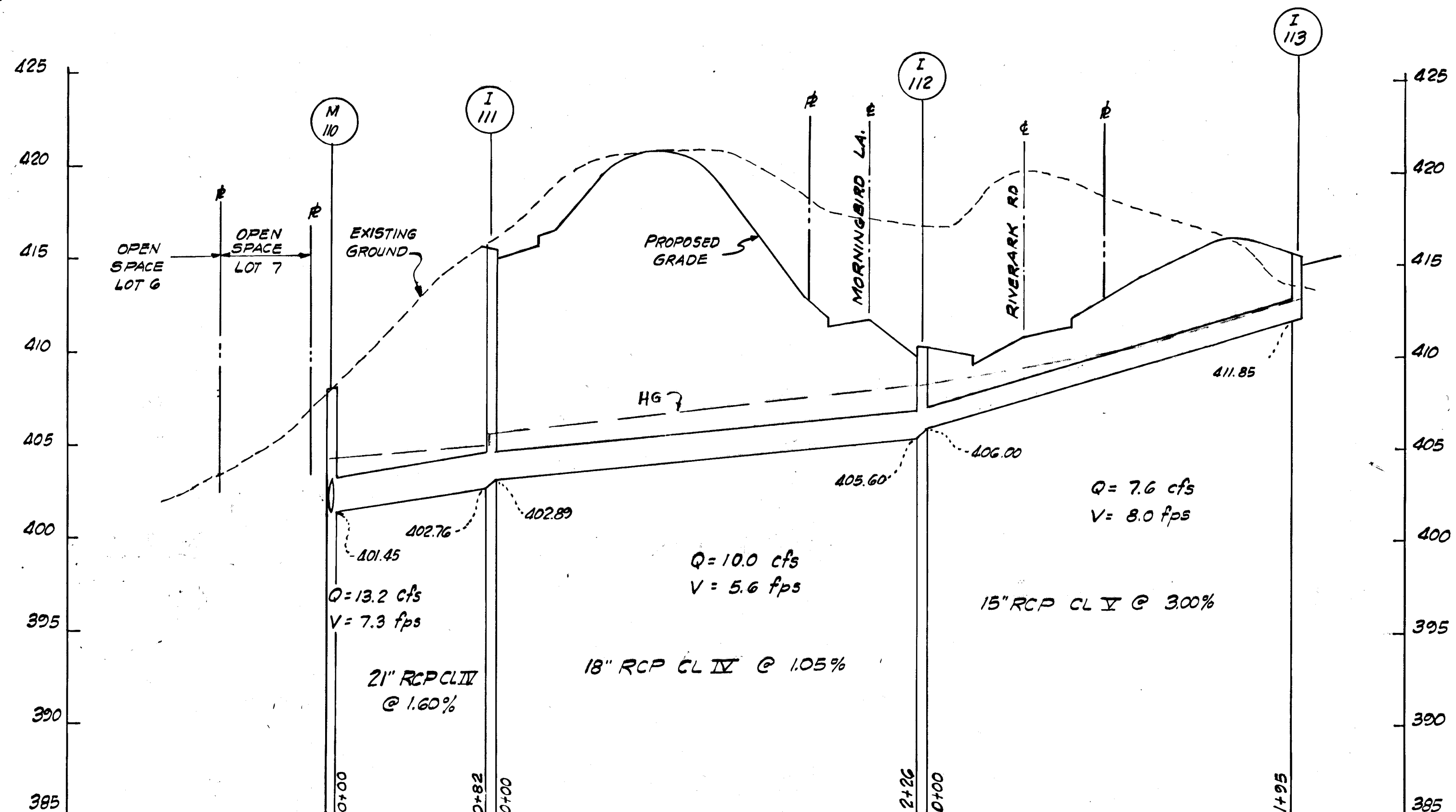
GREENHORNE & O'MARA, INC.
ENGINEERS · ARCHITECTS · PLANNERS · SURVEYORS
6715 KENILWORTH AVE., RIVERDALE, MD.

STORM DRAIN LAYOUT & S.D. STUDY		FOR ARDEN COMPANY, 10600 CONNECTICUT AVENUE, KENSINGTON, MD.	
ML'S DESIGN	DATE	SCALE	1" = 50'
ML'S CHECKED	SHEET No. 1 of 7	DATE	AUG-70
DATE	JOB No. 28870	FILE No.	4225-X

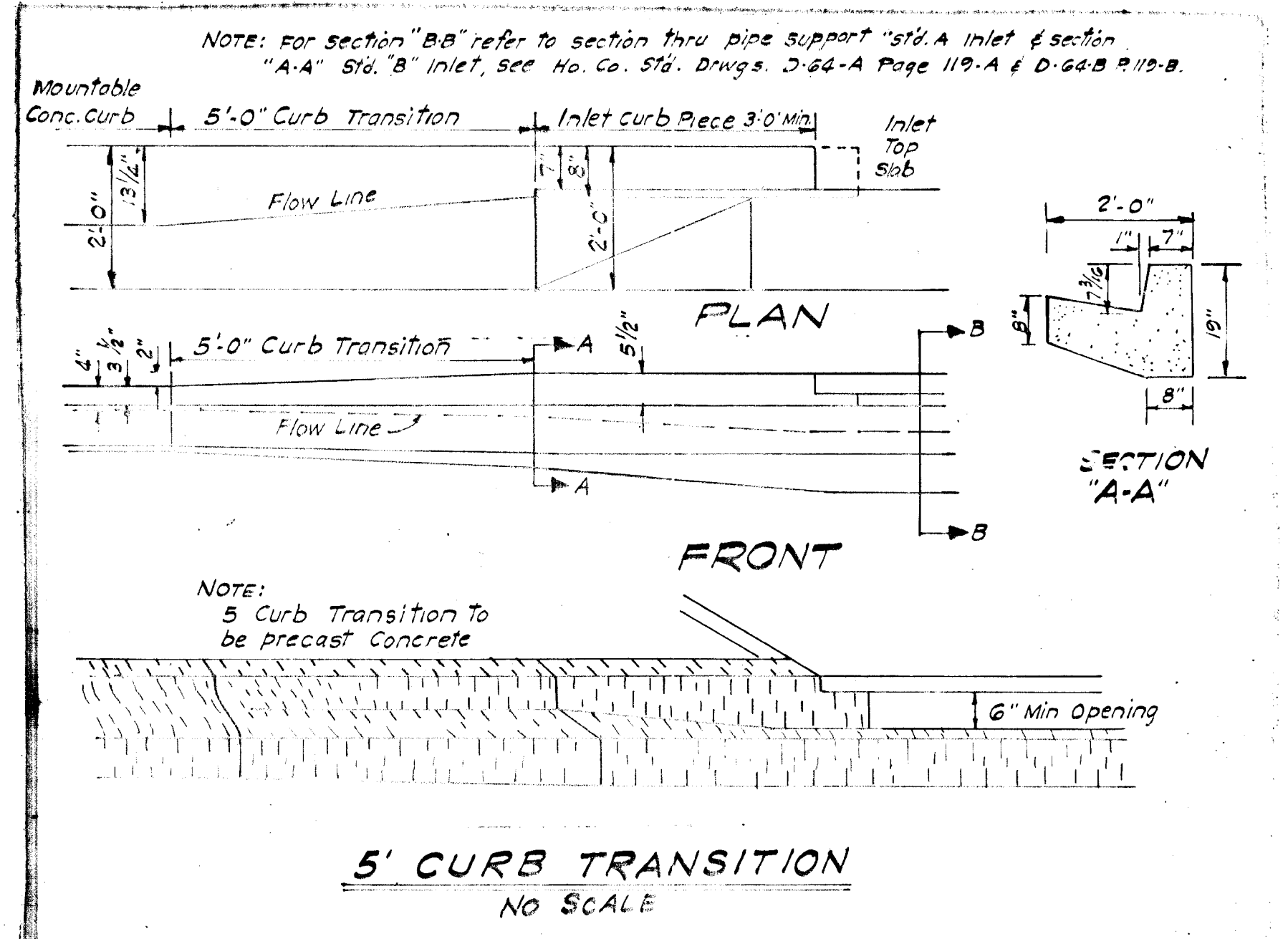


PROFILE

SCALE: HOR: 1" = 50'
VERT: 1" = 5'



STORM DRAINAGE STRUCTURE SCHEDULE						
NO.	TYPE	LOCATION	INV. IN	INV. OUT	TOP ELEV.	REMARKS
I-101	E' Comb. Inlet	25' LT. STA. 0+51.58 MORNINGBIRD LA.	399.13	403.00	403.00	Ho. Co. Std. Drng. D-68 P.123
I-105	A'-5 Inlet	25' RT. STA. 4+88 LOT-D-107	393.74	401.70	401.70	" " " " D-66A P.19-A
M-110	MANHOLE	SEE PLAN LOT-D-101	401.45	408.00	408.00	" " " " D-103 P.158
I-111	A'-5 Inlet	25' LT. STA. 2+20 LOT-D-106	402.89	402.76	415.50	" " " " D-64A P.19-A
I-112	E' Comb. Inlet	20' LT. STA. 2+00 MORNINGBIRD LA.	402.00	405.60	410.00	" " " " D-68 P.123
I-113	A'-5 Inlet	25' LT. STA. 4+90 LOT-D-103	411.85	415.50	415.50	" " " " D-64A P.19-A
I-115	E' Inlet	SEE PLAN LOT-D-101	411.00	409.30	413.80	" " " " D-67 P.122
I-116	A'-5 Inlet	25' RT. STA. 2+58 LOT-D-105	---	417.12	420.00	" " " " D-64A P.19-A
I-114	B'-10 Inlet	25' LT. STA. 2+50 HUMBLEBEE RD.	---	416.74	420.00	" " " " D-103 P.158
M-118	MANHOLE	SEE PLAN	394.52	391.44	398.00	" " " " D-103 P.158
M-109	C' ENDWALL	SEE PLAN	395.65	---	---	" " " " D-52 P.107
I-107	E' Inlet	END EXIST. 30" RCP	388.86	387.95	392.50	" " " " D-67 P.122



Robert C. Schauf 6-30-70

DEPARTMENT OF PUBLIC WORKS
Shawelle M. Meland 9-4-70
CHIEF, BUREAU OF HIGHWAYS. DATE:
OFFICE OF PLANNING AND ZONING
J. J. Clawson 9-3-70
CHIEF ENGINEER, DIVISION OF LAND DEVELOPMENT. DATE:

No.	REVISION	DATE	BY

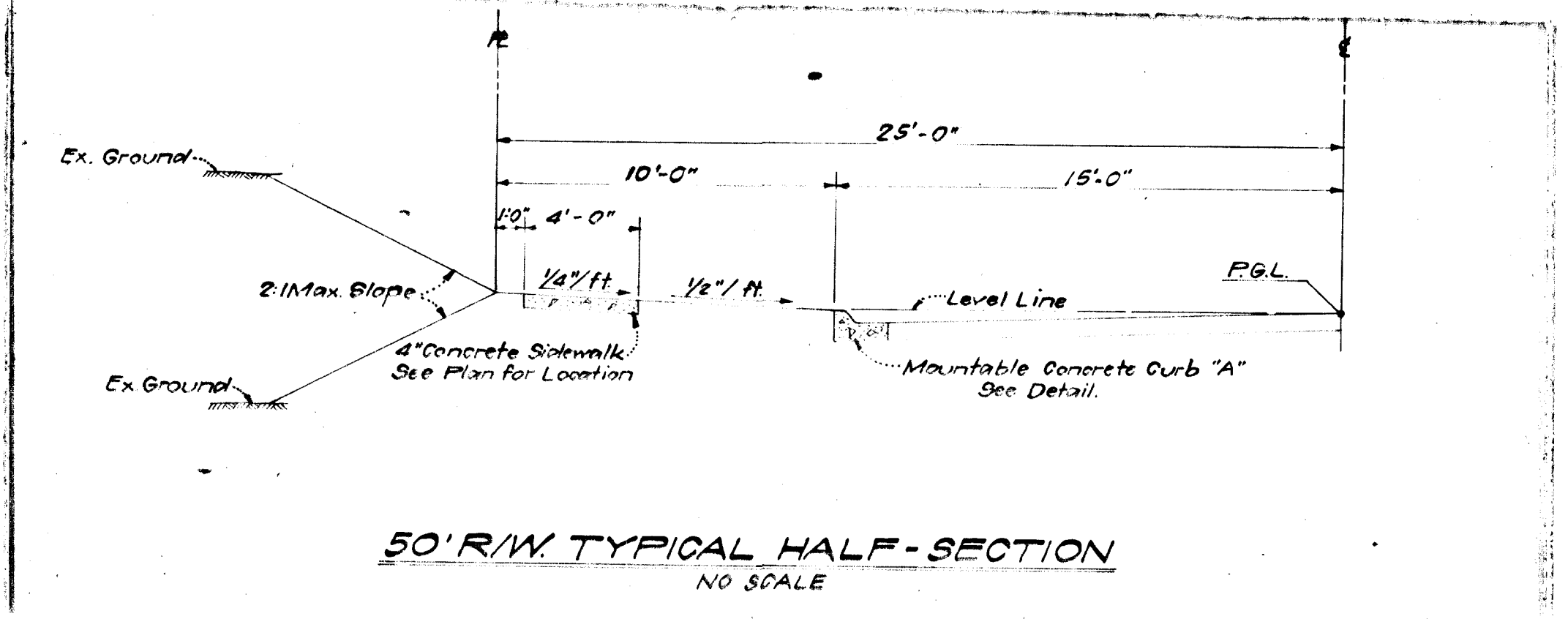
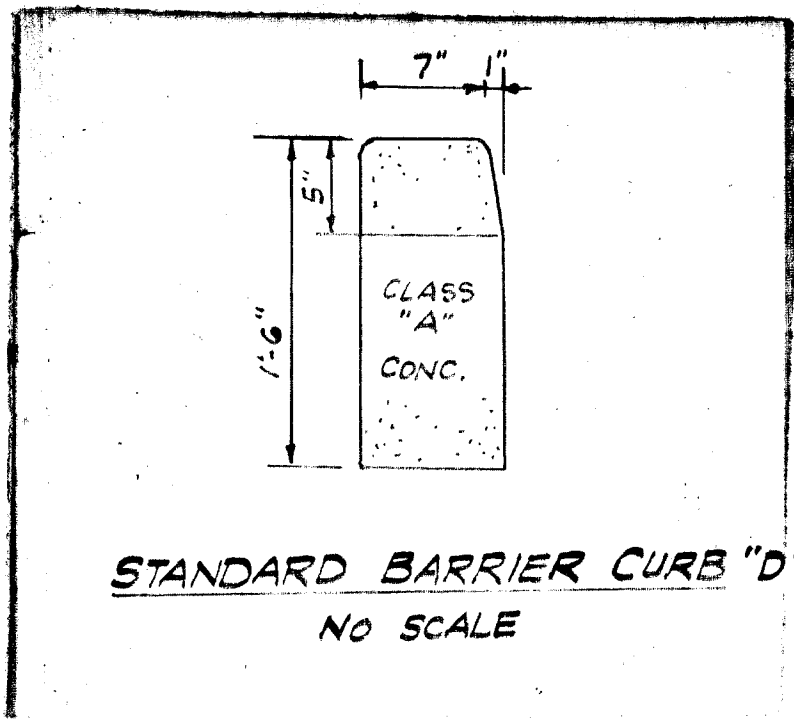
GREENHORNE & O'MARA, INC.
ENGINEERS · ARCHITECTS · PLANNERS · SURVEYORS
6715 KENILWORTH AVE., RIVERDALE, MD.

STORM DRAIN PROFILES & PAVING DETAILS
COLUMBIA
VILLAGE OF OAKLAND MILLS
SECTION 2 AREA 4
LOTS D-1 TO D-102 A RESUBDIVISION OF PARCEL "D"
67th ELECTION DISTRICT
HOWARD COUNTY, MARYLAND.

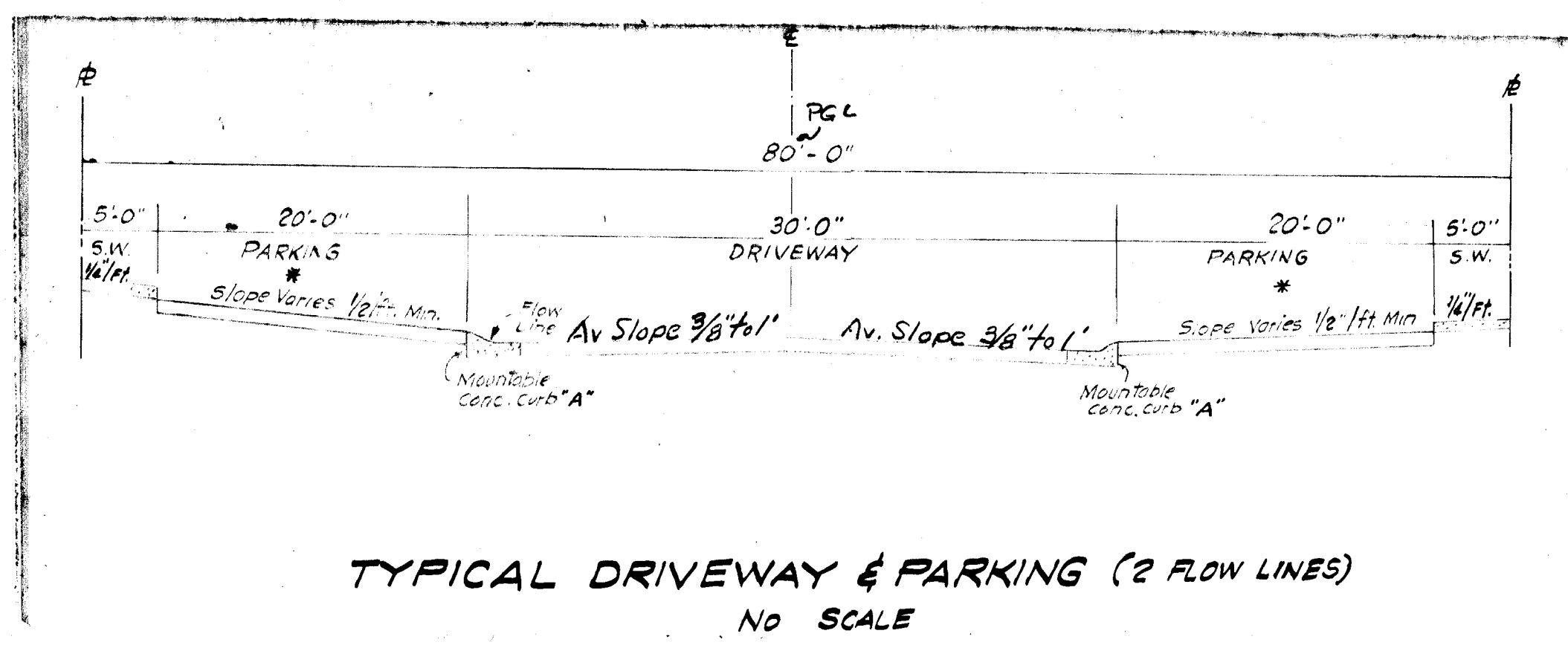
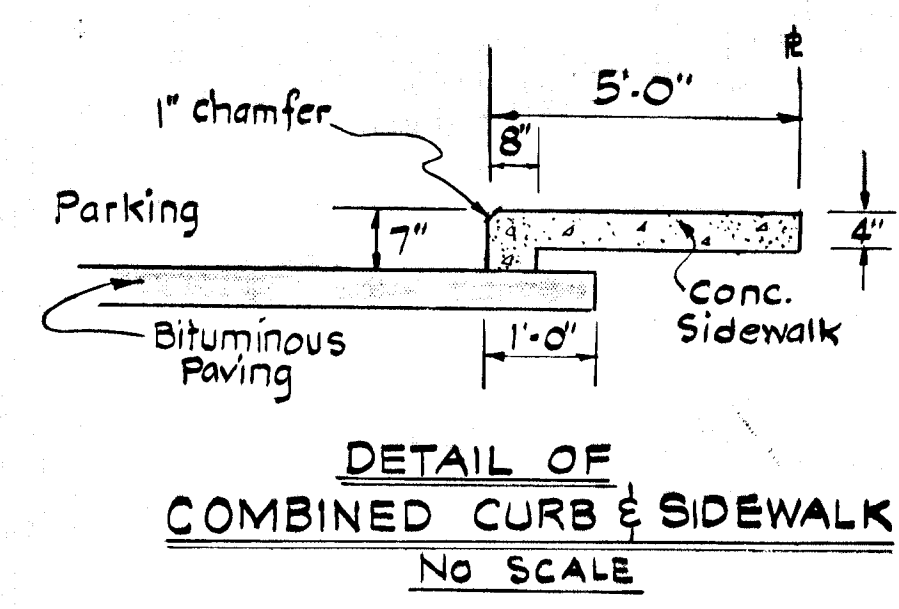
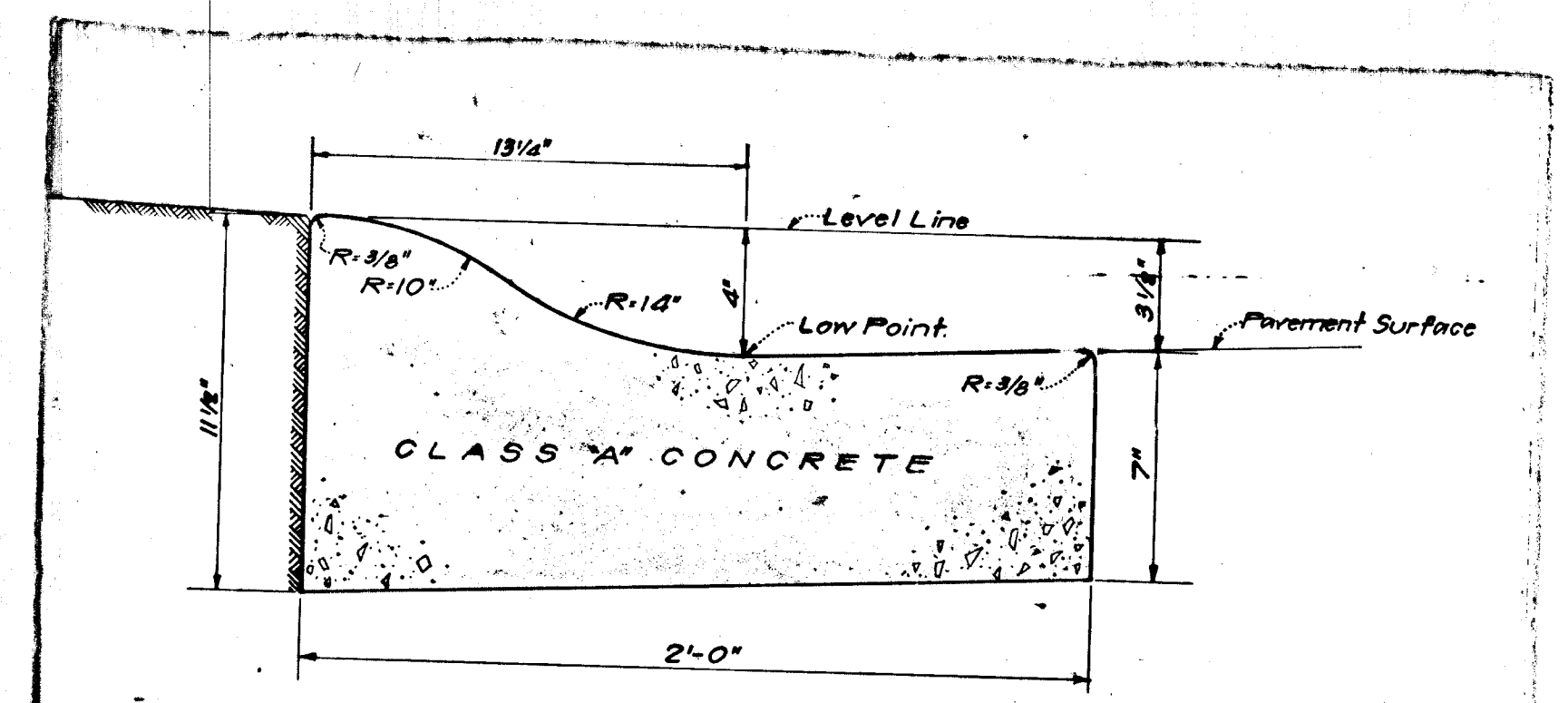
M.L.S. DESIGN FOR: ARTERY COMMUNITIES, INC.
DATE: AUG.-70 28870
JOB No. 4225-X
SCALE AS SHOWN
SHEET No. 2 OF 7
FILE No.

F-70-96

SEE SHEETS 4707 SEE 50-1008-11

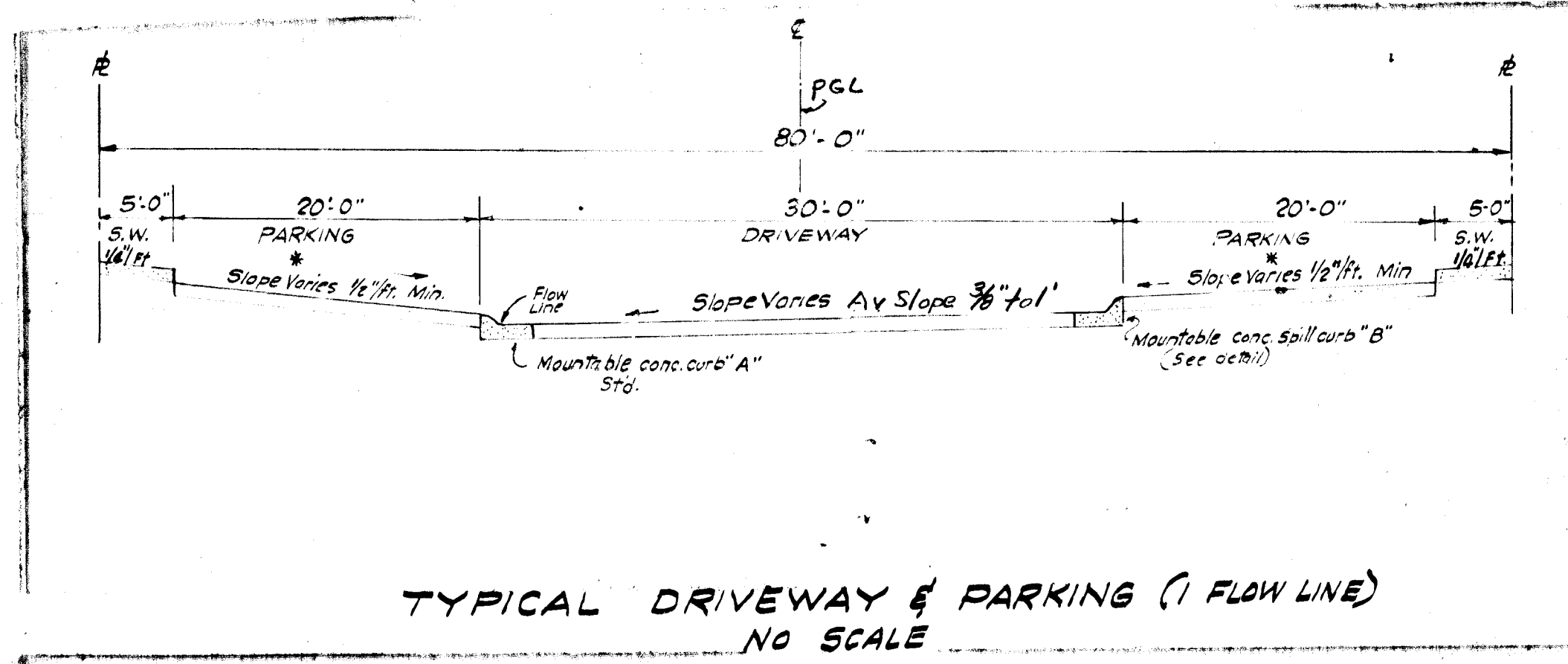
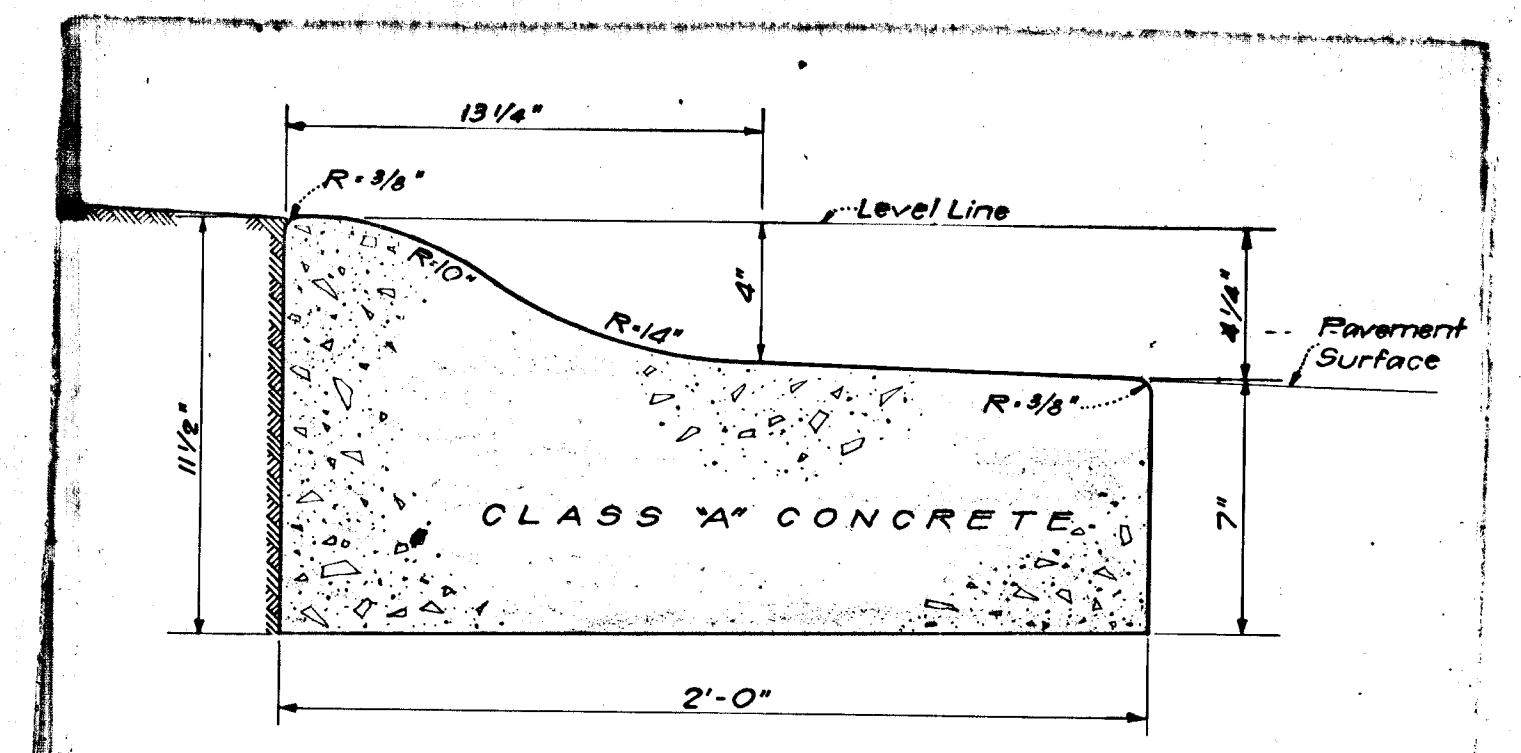


NOTE: Pavement to be constructed in accordance with the Howard County Road Construction Code and Specifications Drawing D-114 Page 165-d

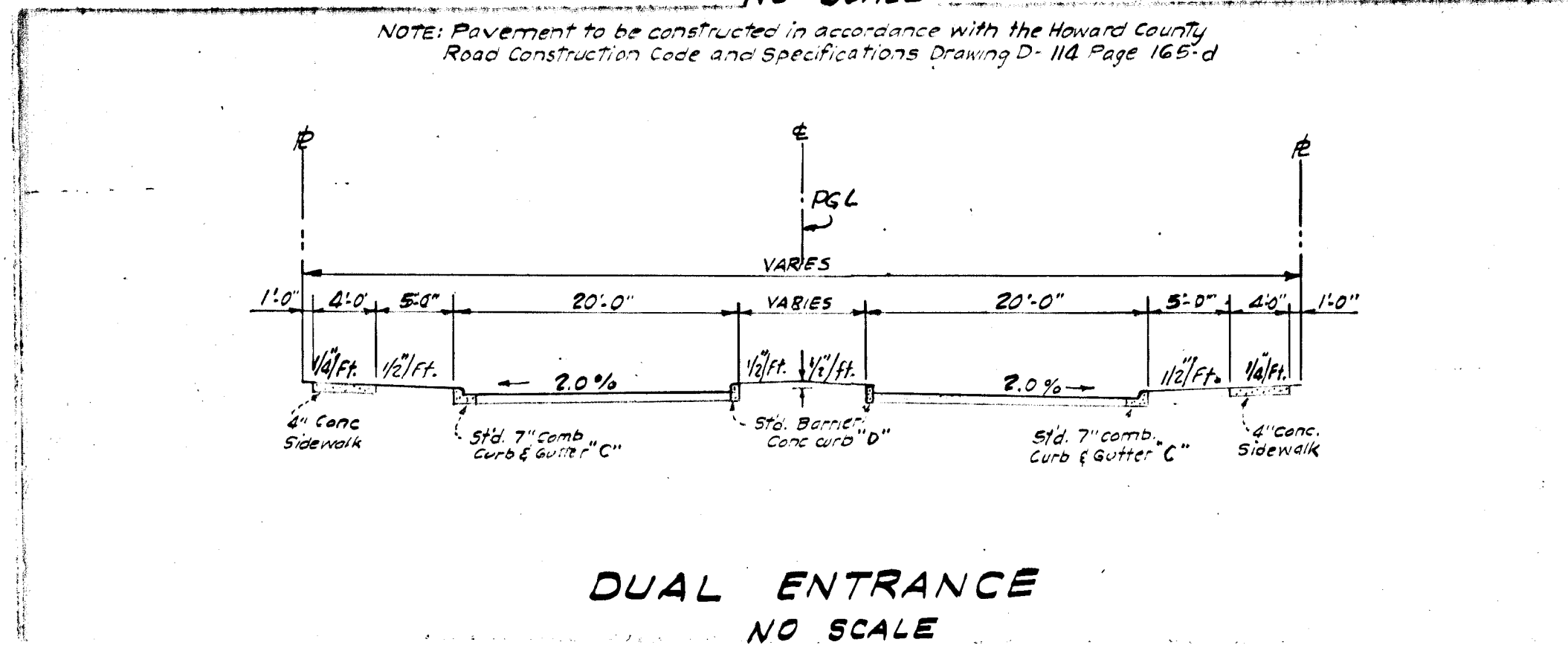
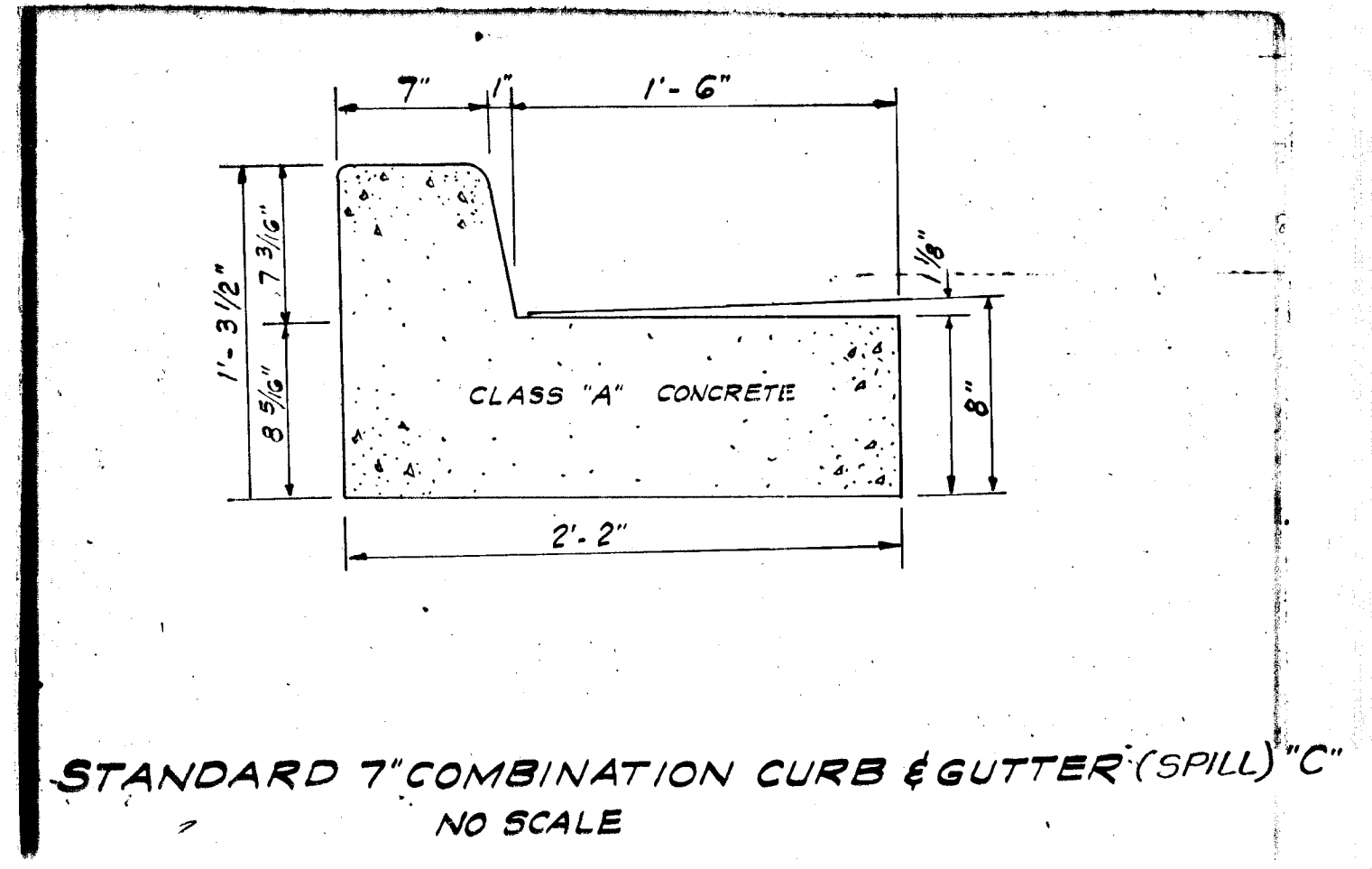


NOTE: Pavement to be constructed in accordance with the Howard County Road Construction Code and Specifications Drawing D-117 Page 165-g

NOTE: Pavement to be constructed in accordance with the Howard County Road Construction Code and Specifications Drawing D-114 Page 165-d



NOTE: Pavement to be constructed in accordance with the Howard County Road Construction Code and Specifications Drawing D-114 Page 165-d



NOTE: Pavement to be constructed in accordance with the Howard County Road Construction Code and Specifications Drawing D-114 Page 165-d

Robert C. Schauf 630.70
#89

DEPARTMENT OF PUBLIC WORKS
Dorville M. Melend 9-4-70
CHIEF, BUREAU OF HIGHWAYS. DATE:
OFFICE OF PLANNING AND ZONING
St. Lawson 9-3-70
CHIEF ENGINEER, DIVISION OF LAND DEVELOPMENT. DATE:

No.	REVISION	DATE	BY

GREENHORNE & O'MARA, INC.
ENGINEERS · ARCHITECTS · PLANNERS · SURVEYORS
6715 KENILWORTH AVE., RIVERDALE, MD.

PAVING DETAILS
COLUMBIA
VILLAGE OF OAKLAND MILLS
SECTION 2 AREA 4
LOTS D-1 TO D-102 A RESUBDIVISION OF PARCEL "D"
6TH ELECTION DISTRICT
HOWARD COUNTY, MARYLAND.

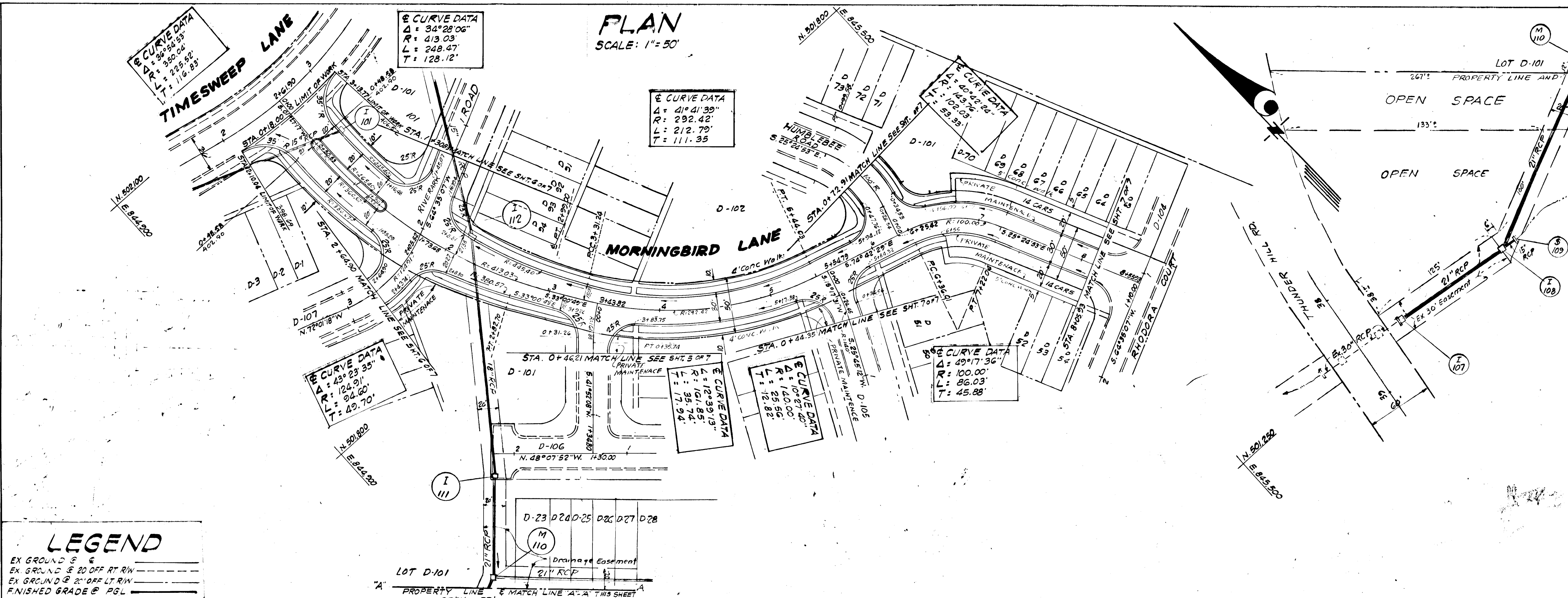
M.L.S. DESIGN	FOR ARTERY COMMUNITIES, INC., 10900 CONNECTICUT AVENUE, KENSINGTON, MD.	
T/REG DRAWN	SCALE As shown	
M.L.S. CHECKED	SHEET No. 3	OF 7
DATE	28870	42257
	JOB No.	FILE No.

FOR SHTS. 4 TO 7 SEE 5616

F-70-96

DATE	
BY	
NO.	
PLAN	
DATE	
BY	
NO.	

DATE	
BY	
NO.	
PROFILE	
DATE	
BY	
NO.	



Rev. Date Rev. No. Revision Description

COLUMBIA
6TH ELECTION DISTRICT
HOWARD COUNTY VARYLAND

HOWARD RESEARCH AND DEVELOPMENT CORP.

PROJECT AREA: PARCEL "D"
VILLAGE OF OAKLAND MILLS
SECTION 2, STEVEN'S FOREST, AREA 4

PROJECT TITLE: **PLAN & PROFILE**
MORNINGBIRD LANE

Dr. By: **MLS** Scale: 45 S-C-114 Dwg. No. 4 of 7
 Des. By: **TREB** Date: **AUG. 1970** C.C.F. No.
 Chk. By: **MLS** Approved

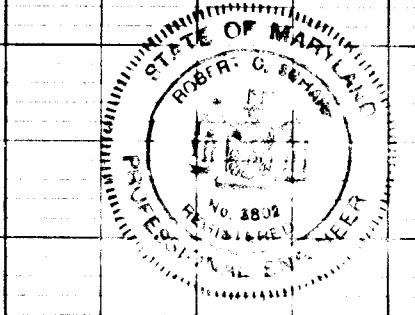
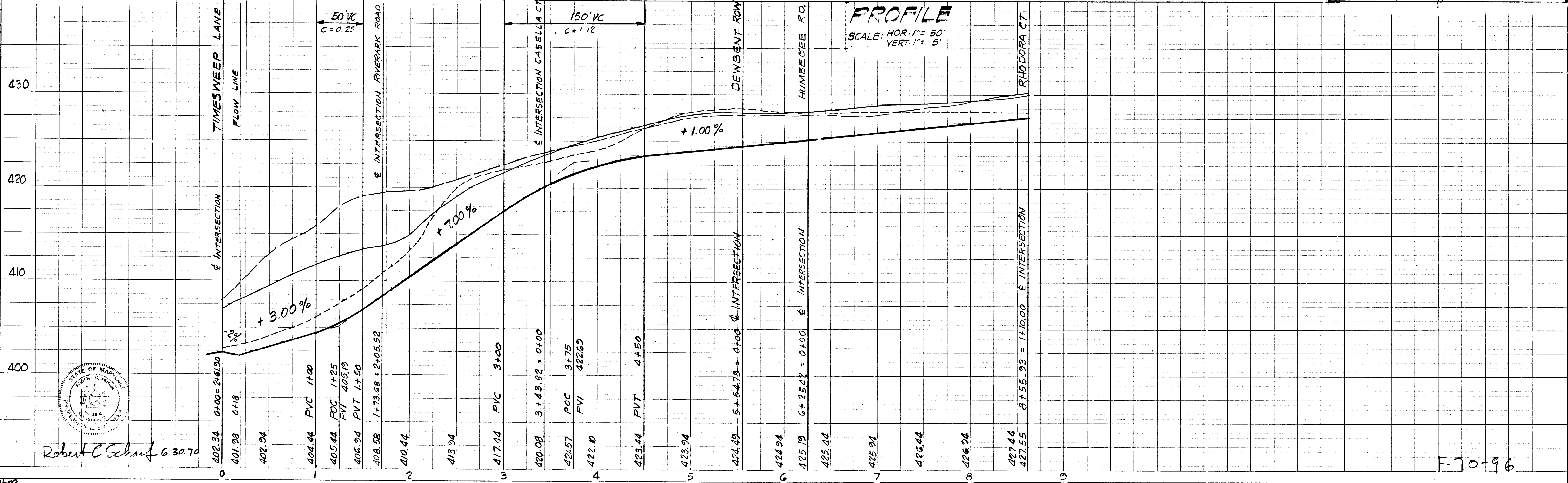
GREENHORNE AND O'MARA, INC.
ENGINEERS - ARCHITECTS - PLANNERS - SURVEYORS
7715 KENILWORTH AVENUE RIVERDALE, MD.

DEPARTMENT OF PUBLIC WORKS
Granville W. Holland 9-4-70
CHIEF, BUREAU OF HIGHWAYS DATE

OFFICE OF PLANNING AND ZONING
J. H. Clawson 9-3-70
SE ENGINEER DIV. SO. OF LAND DEVELOPMENT, DATE

LEGEND

EX GROUND & 20' OFF RT. RW
 EX GROUND & 20' OFF LT. RW
 FINISHED GRADE & PGL

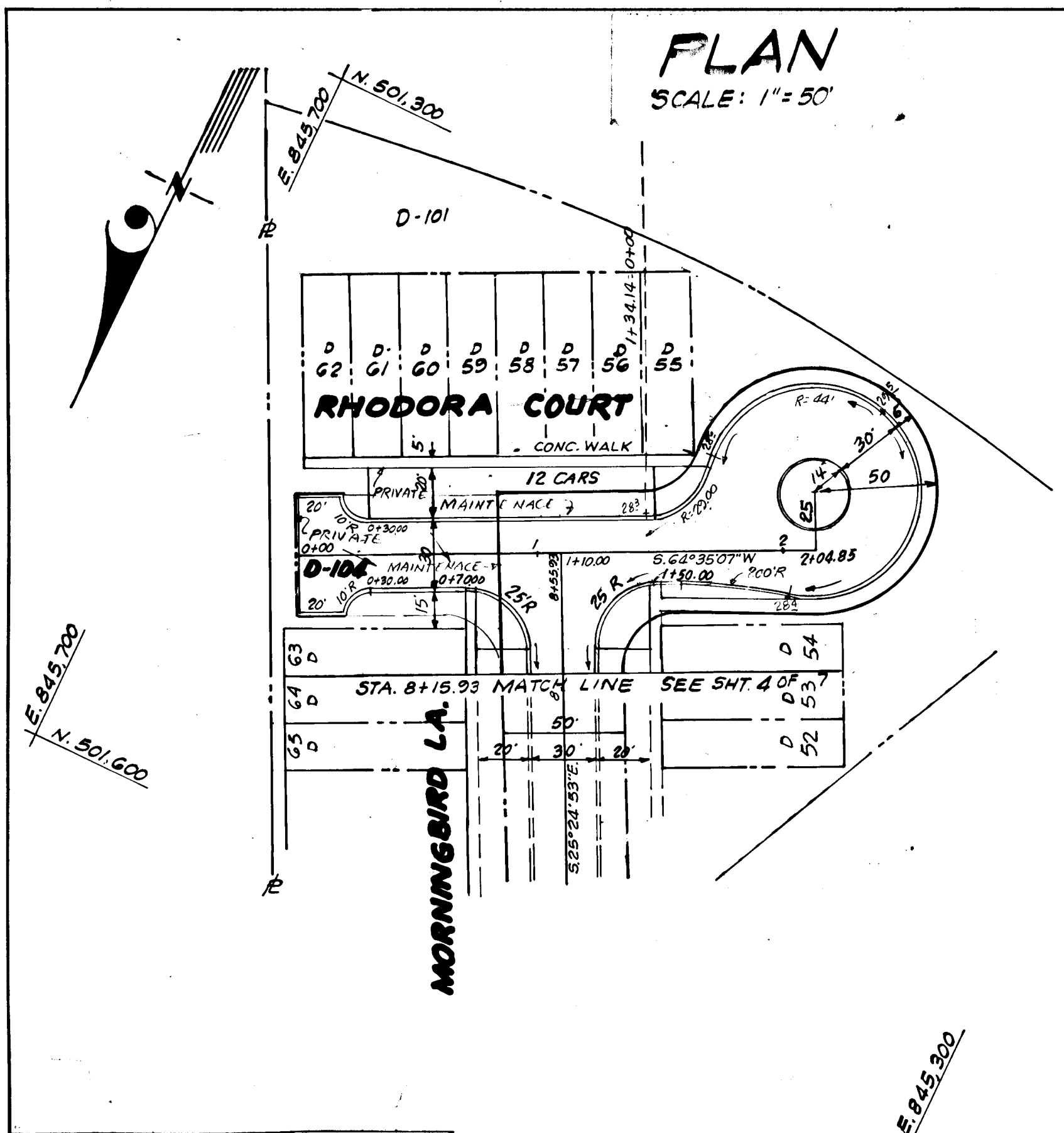


Robert C. Schauf 63070

F-70-96

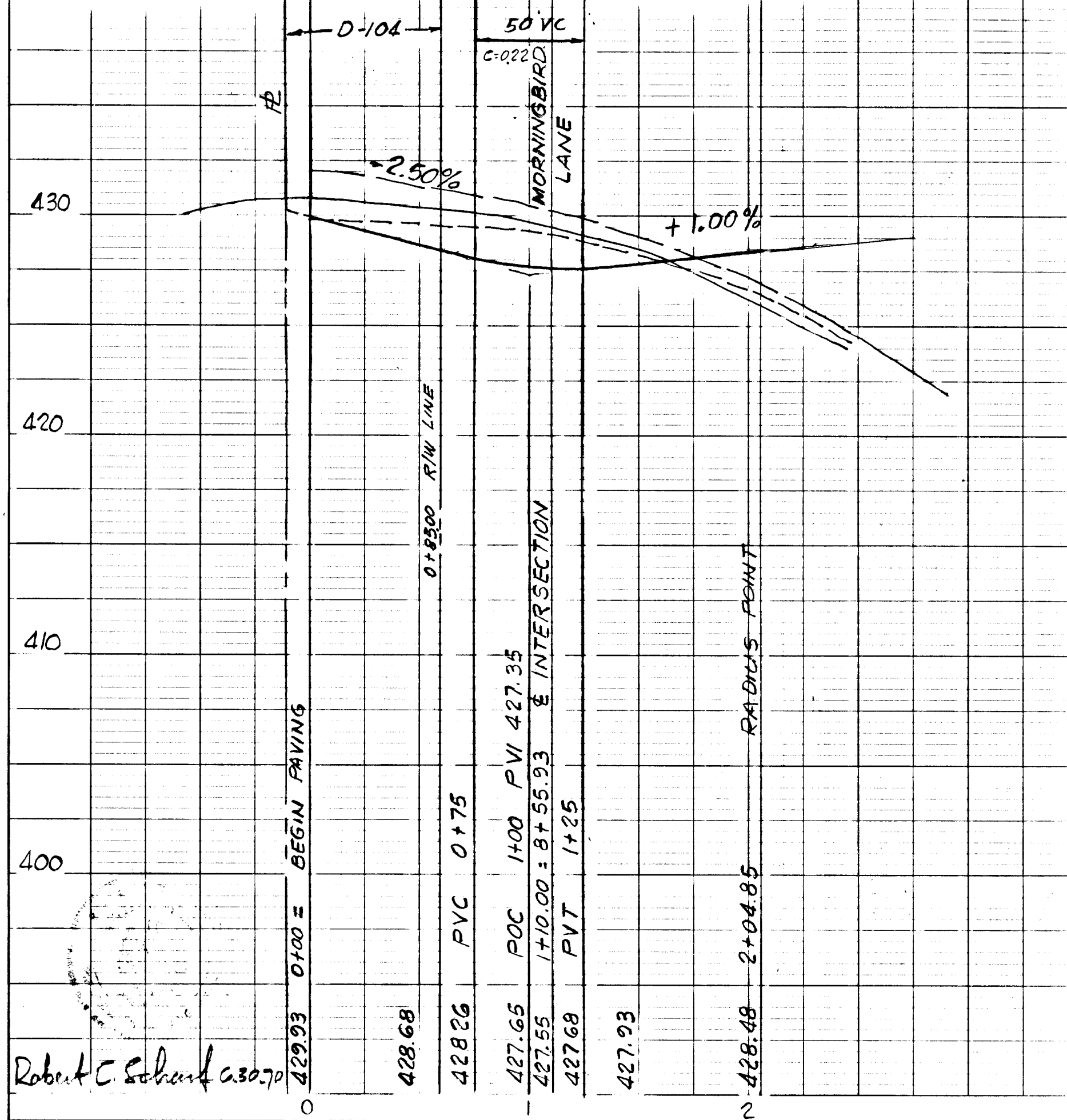
DATE	
BY	
NO.	
DATE	
BY	
NO.	
DATE	
BY	
NO.	

DATE	
BY	
NO.	
DATE	
BY	
NO.	
DATE	
BY	
NO.	

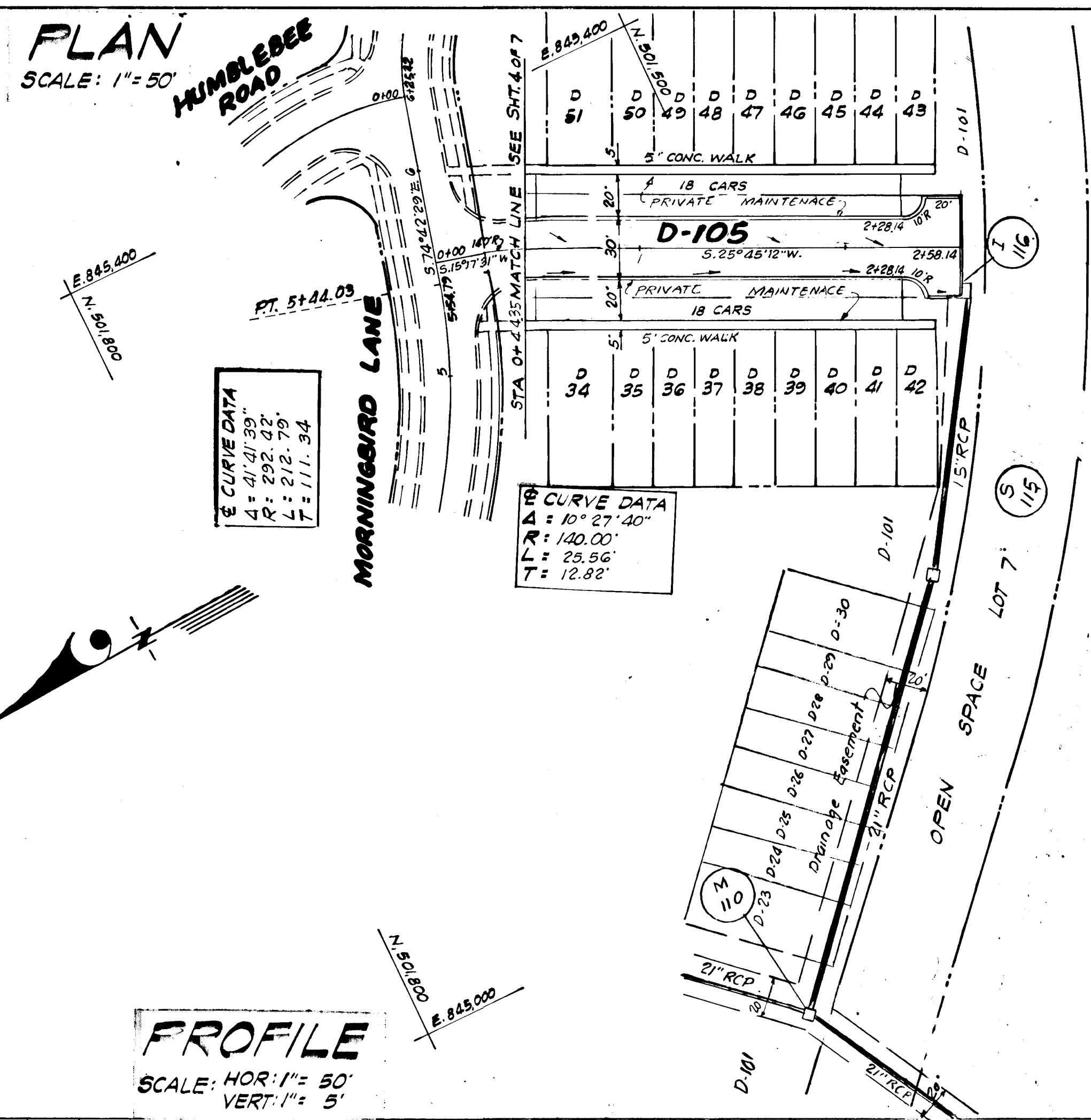


LEGEND
 EX GROUND @
 EX GROUND @ 20' OFF RT. RW
 EX GROUND @ 20' OFF LT. RW
 FINISHED GRADE @ PGL

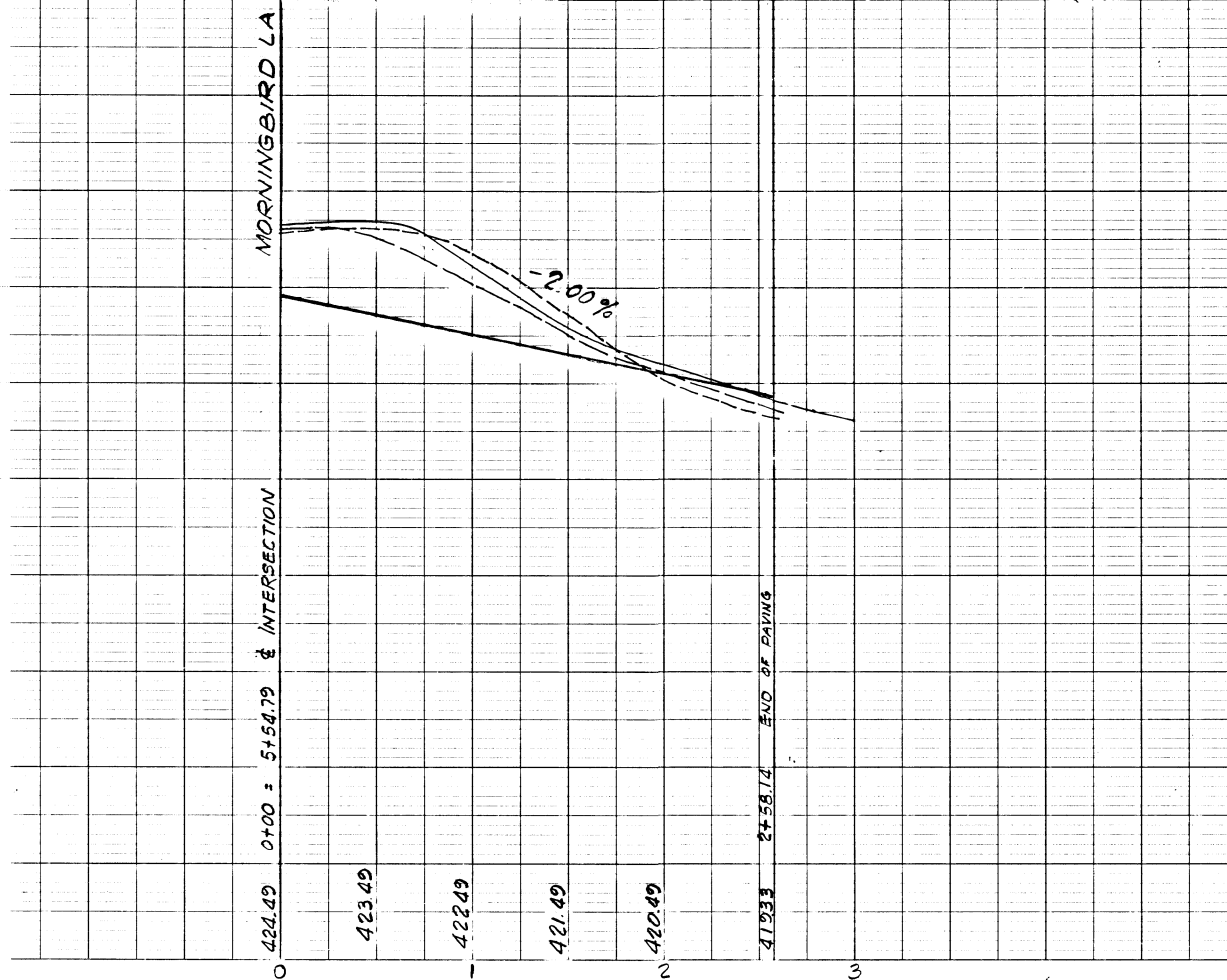
PROFILE
 SCALE: HOR: 1" = 50'
 VERT: 1" = 5'



RHODORA COURT & D-104



PROFILE
 SCALE: HOR: 1" = 50'
 VERT: 1" = 5'



D-105

Rev Date	Rev No	Revision Description
COLUMBIA 6TH ELECTION DISTRICT HOWARD COUNTY MARYLAND		
HOWARD RESEARCH AND DEVELOPMENT CORP		
PROJECT AREA: PARCEL D VILLAGE OF OAKLAND MILLS SECTION 2, STEVEN'S FOREST, AREA 4		
PROJECT TITLE: PLAN & PROFILE RHODORA CT., D-104 & D-105		
Des. By: M.L.S.	Scale: 45 S-014	Dwg No: 7 OF 7
Dir. By: TREIG	Date: AUG. - 1970	CCF No.
Chk. By: M.L.S.	Approved	
GREENHORNE AND O'MARA, INC. ENGINEERS - ARCHITECTS - PLANNERS - SURVEYORS 6715 KENILWORTH AVENUE RIVERDALE MD.		
DEPARTMENT OF PUBLIC WORKS Frederick N. Weiland 9-4-70 CHIEF, BUREAU OF HIGHWAYS DATE		
OFFICE OF PLANNING AND ZONING J.H. Cloutman 9-3-70 ENGINEER, DIV. 5, ON LAND DEVELOPMENT DATE		

F-70-96

SG-1611