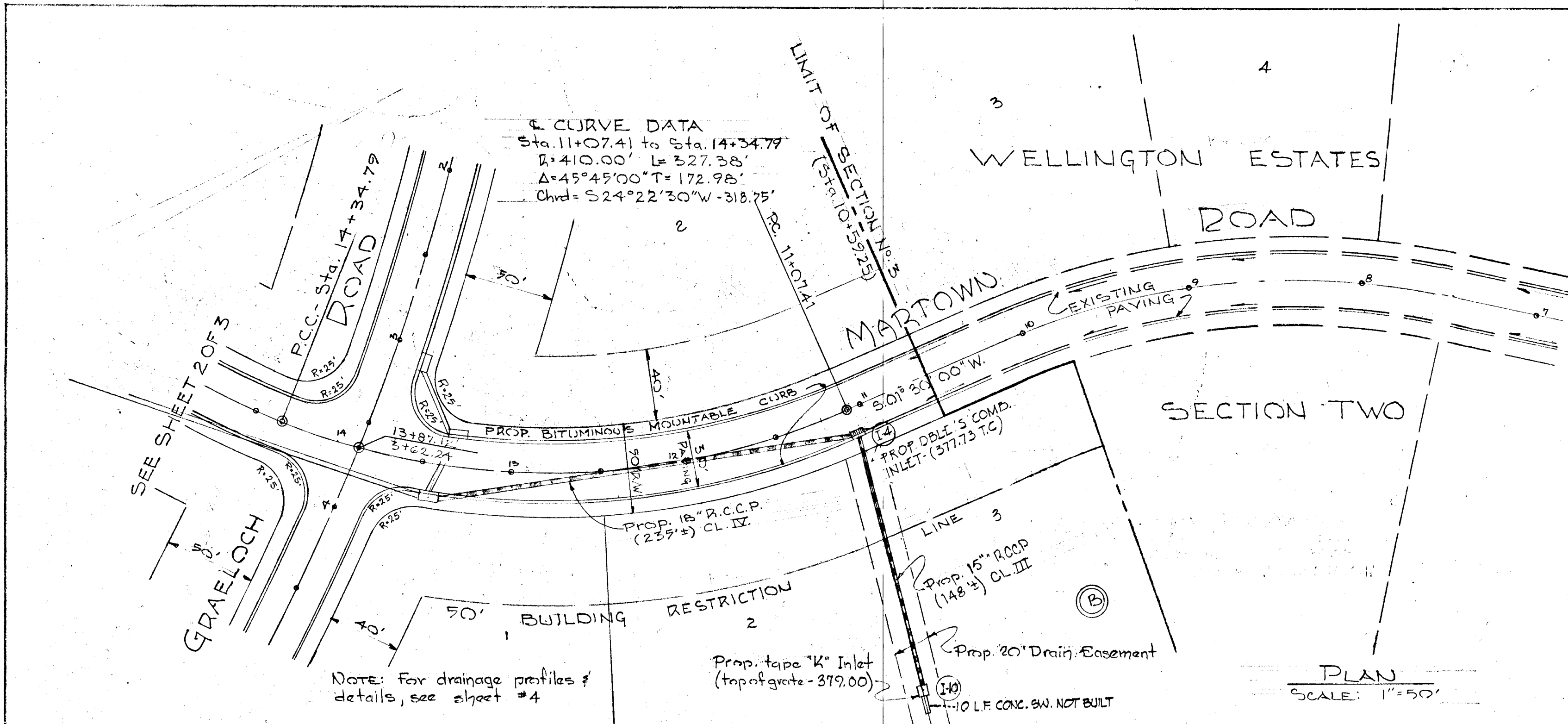


PLAN  
 NOTE: SEE SHEET 2 OF 3  
 SEE SHEET 2 OF 3



OWNER & DEVELOPER  
 HUDSON CONSTRUCTION CO.  
 EVERGREEN WAY  
 ELLICOTT CITY, MARYLAND

APPROVED: Department of Public Works

*B. M. McEland* 9/18/70  
 Chief, Bureau of Highway  
 Office of Planning & Zoning

*J. N. Clewley* 9-15-70  
 Chief Engineer, Division of Land Development

PLAN & PROFILE: MARTOWN ROAD  
 SECTION 3

## WELLINGTON ESTATES

CITY ELECTION DISTRICT 7 HOWARD CO., MD.  
 JUNE 23, 1970 SCALE: AS SHOWN

SHEET 1 OF 3

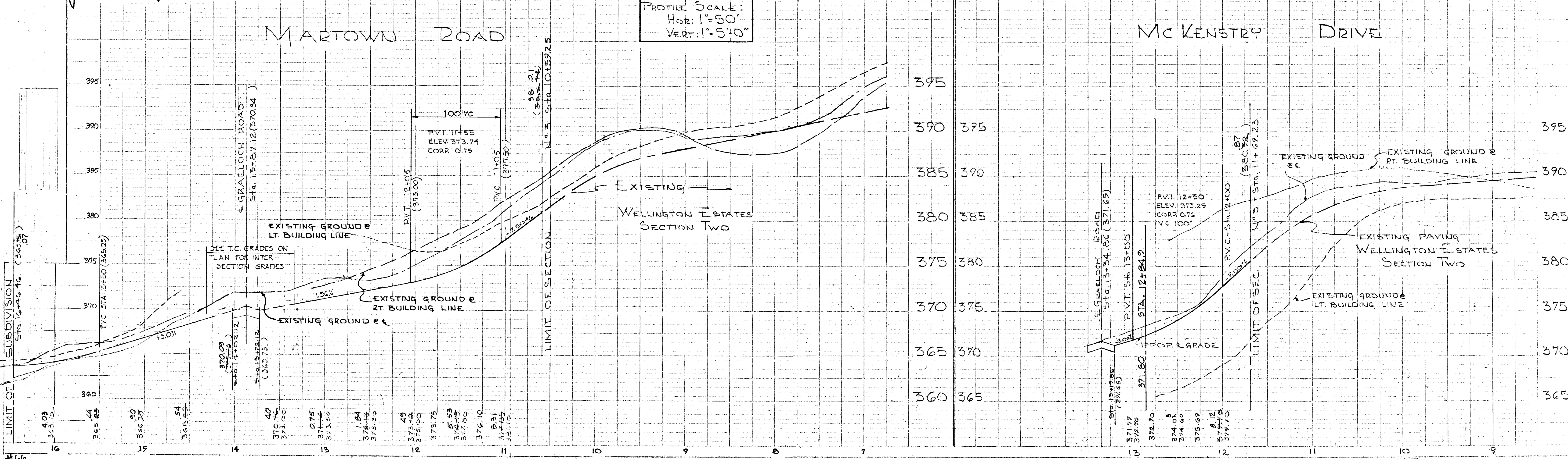
PURDOM  
 AND  
 JESCHKE  
 ENGINEERS &  
 LAND SURVEYORS

24 PARK AVE.  
 ELLICOTT CITY, MD.

DATE: **June 23, 1970**

REG. # 2051

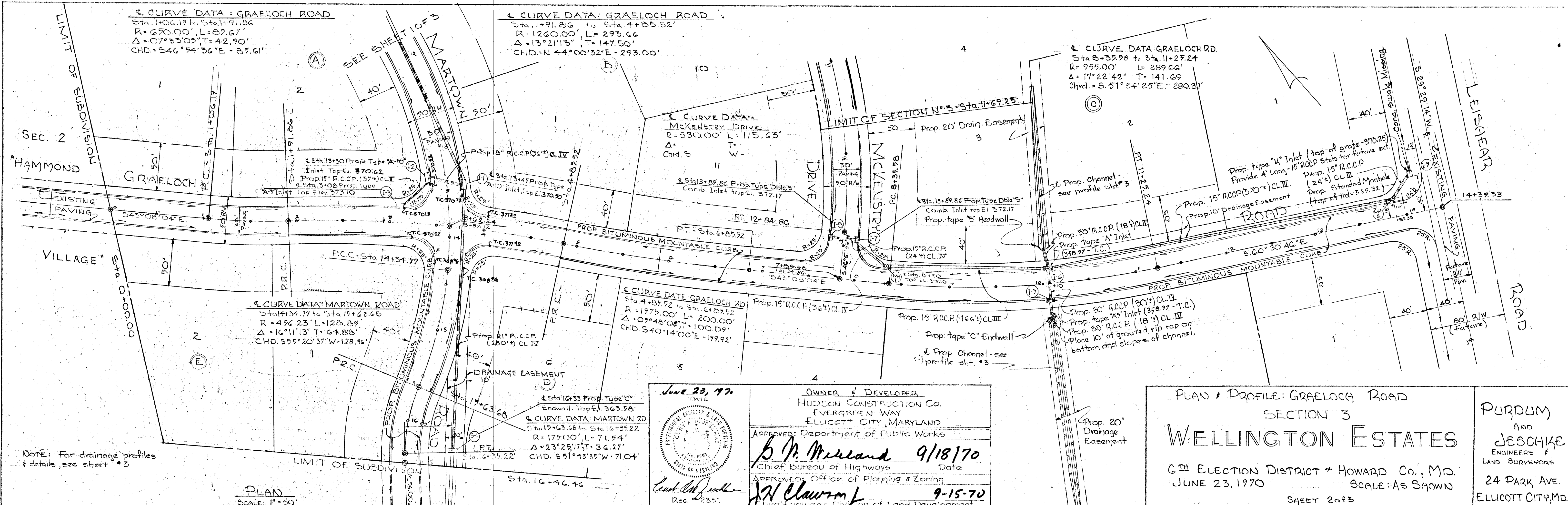
BENCH MARK ELEV. 391.61  
 TWO NAILS IN C&P POLE #116



STATE PLANNING & ZONING BOARD

AS-BUILT F-70-92

AP/60



DATE: June 23, 1970

OWNER & DEVELOPER:  
 HUDSON CONSTRUCTION CO.  
 EVERGREEN WAY  
 ELLICOTT CITY, MARYLAND

Approved: Department of Public Works  
*B. P. McLeod* 9/18/70  
 Chief, Bureau of Highways

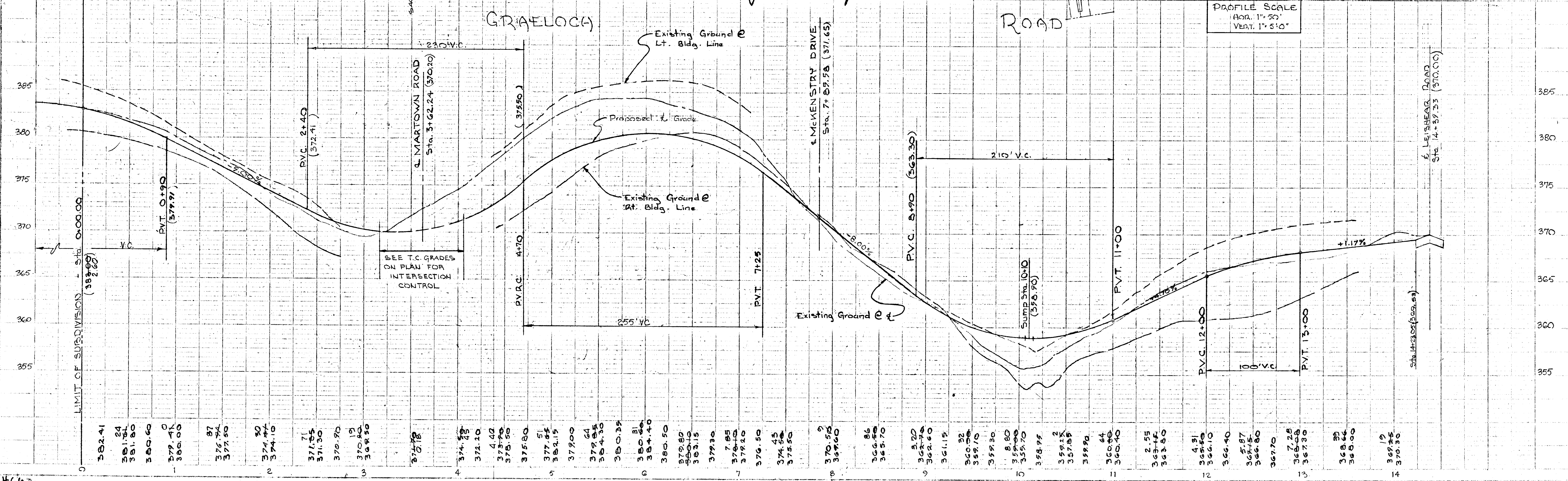
APPROVED: Office of Planning & Zoning  
*J. N. Clawson* 9-15-70  
 Chief Engineer, Division of Land Development

Reg. 2251

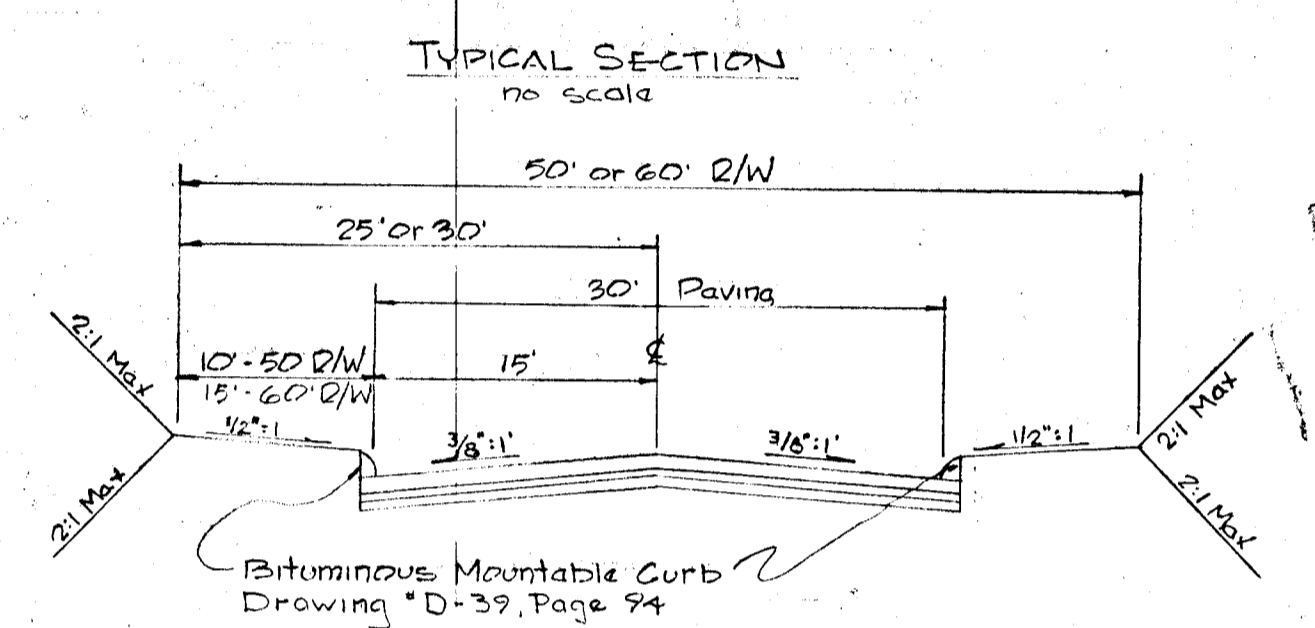
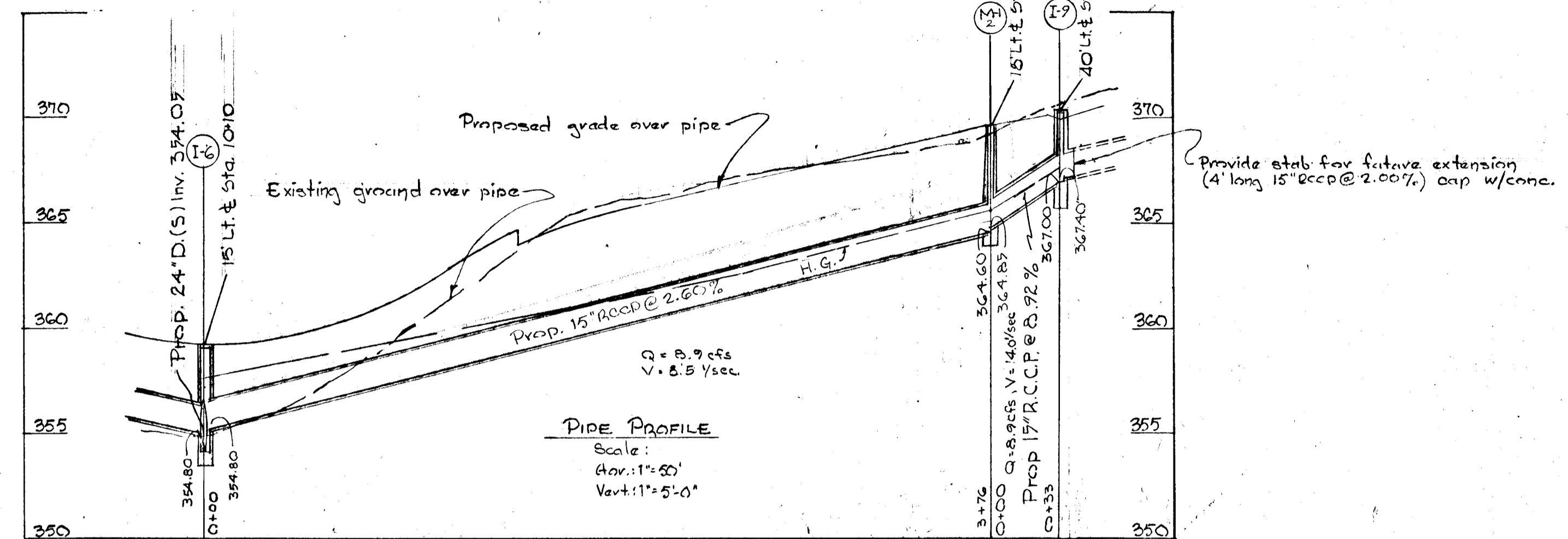
PLAN & PROFILE: GRAELOCH ROAD  
 SECTION 3  
**WELLINGTON ESTATES**  
 6th ELECTION DISTRICT + HOWARD CO., MD.  
 JUNE 23, 1970  
 SCALE: AS SHOWN

PURDUM  
 AND  
 JESCHKE  
 ENGINEERS  
 LAND SURVEYORS  
 24 PARK AVE.  
 ELLICOTT CITY, MD.

SAEET 2 of 3



STRUCTURE SCHEDULE					
NO.	TYPE	INV. IN	INV. OUT	TOP ELEV	REMARKS
I-1	A-10	366.66	366.41	370.50	DRWG. #41-A, P-119A
I-2	A-10	367.19	366.80	370.62	"
I-3	A-7	367.78	367.40	370.75	"
I-4	DBLE. S" COMB.	373.30	373.09	377.75	DRWG. #D-99, P-194 DEPRESSED
I-5	A-7	373.53	373.20	378.90	DRWG. #41-A, P-119A
I-6	A-7	374.29	374.09	378.90	"
I-7	S" COMB.	366.82	366.57	372.17	DRWG. #D-99, P-194 DEPRESSED
I-8	S" COMB.	366.82	366.02	372.17	"
I-9	K	367.40	367.00	370.25	DRWG. #D-98, P-118
I-10	K	367.40	370.00	373.00	"
MH-1	STAND. MANHOLE	363.21	362.96	371.10	DRWG. #D-103, P-193
MH-2	STAND. MANHOLE	364.89	364.60	369.32	"
S-1	MOD. 'C' ENDWALL		361.08	363.98	SEE DETAIL
S-2	STD. 'C' ENDWALL		373.00	376.90	DRWG. #D-92, P-107
S-3	STD. 'B' HEADWALL	354.57		358.25	DRWG. #D-48, P-103



Approved: Department of Public Works  
*J. H. McInerney* 9/18/70  
 Chief, Bureau of Highways Date  
 APPROVED: Office of Planning and Zoning  
*J. H. Clawson* 9-15-70  
 Chief Engineer, Division of Land Development

DRAINAGE PROFILES & DETAILS  
 SECTION 3  
**WELLINGTON ESTATES**  
 6TH ELECTION DISTRICT HOWARD CO., MD.  
 JUNE 23, 1970 SCALE: AS SHOWN

PURDUM & JESCHKE ENGINEERS  
 24 PARK AVENUE  
 ELLICOTT CITY, MD.  
 June 23, 1970  
 PROFESSIONAL ENGINEER & LAND SURVEYOR  
 STATE OF MARYLAND  
*Carl J. Jeschke*

