

# COLUMBIA

HOWARD COUNTY, MARYLAND

6th ELECTION DISTRICT

## VILLAGE OF HARPERS CHOICE SEC. 4 SWANSFIELD AREA 4

OWNER & DEVELOPER

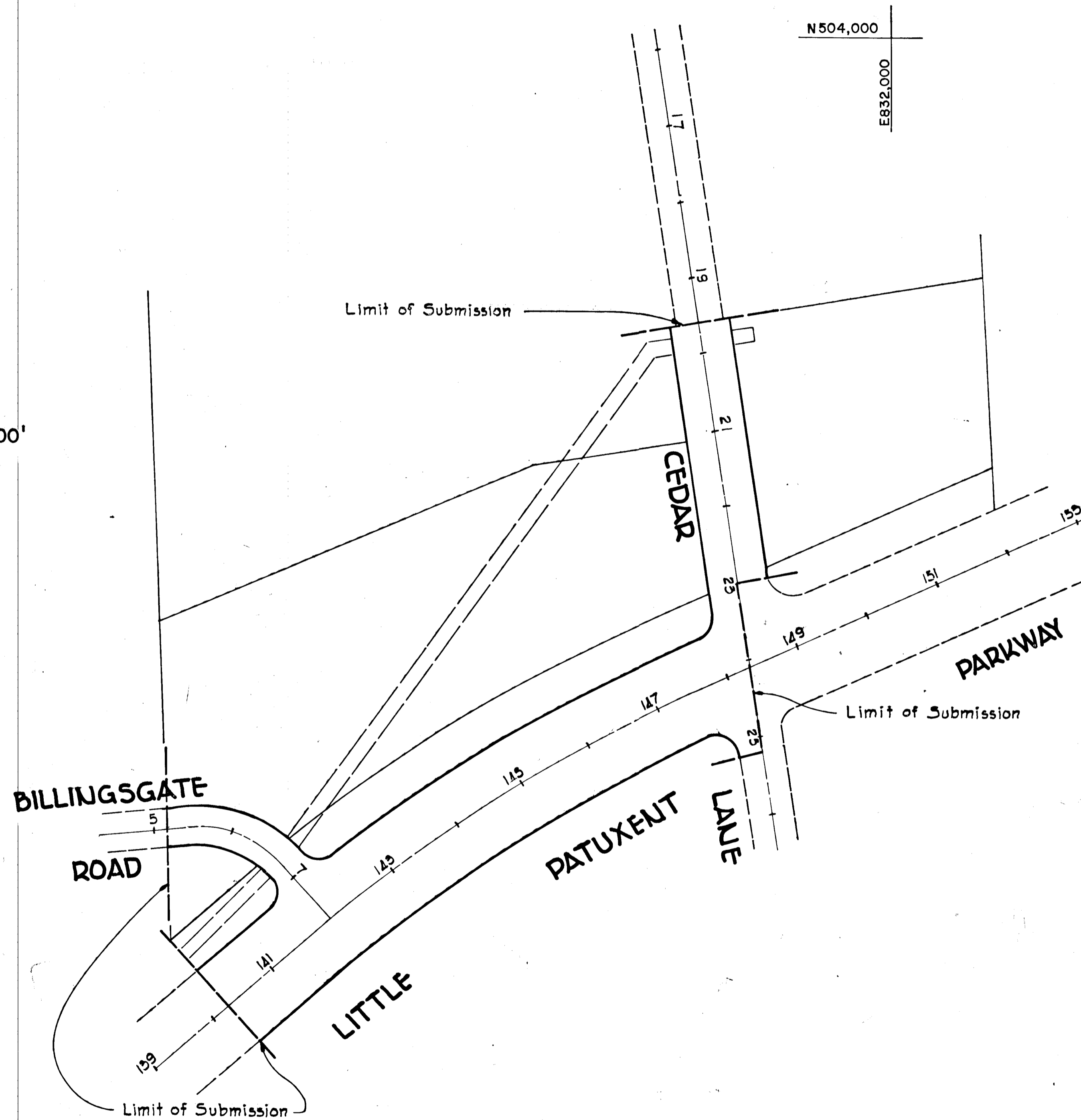
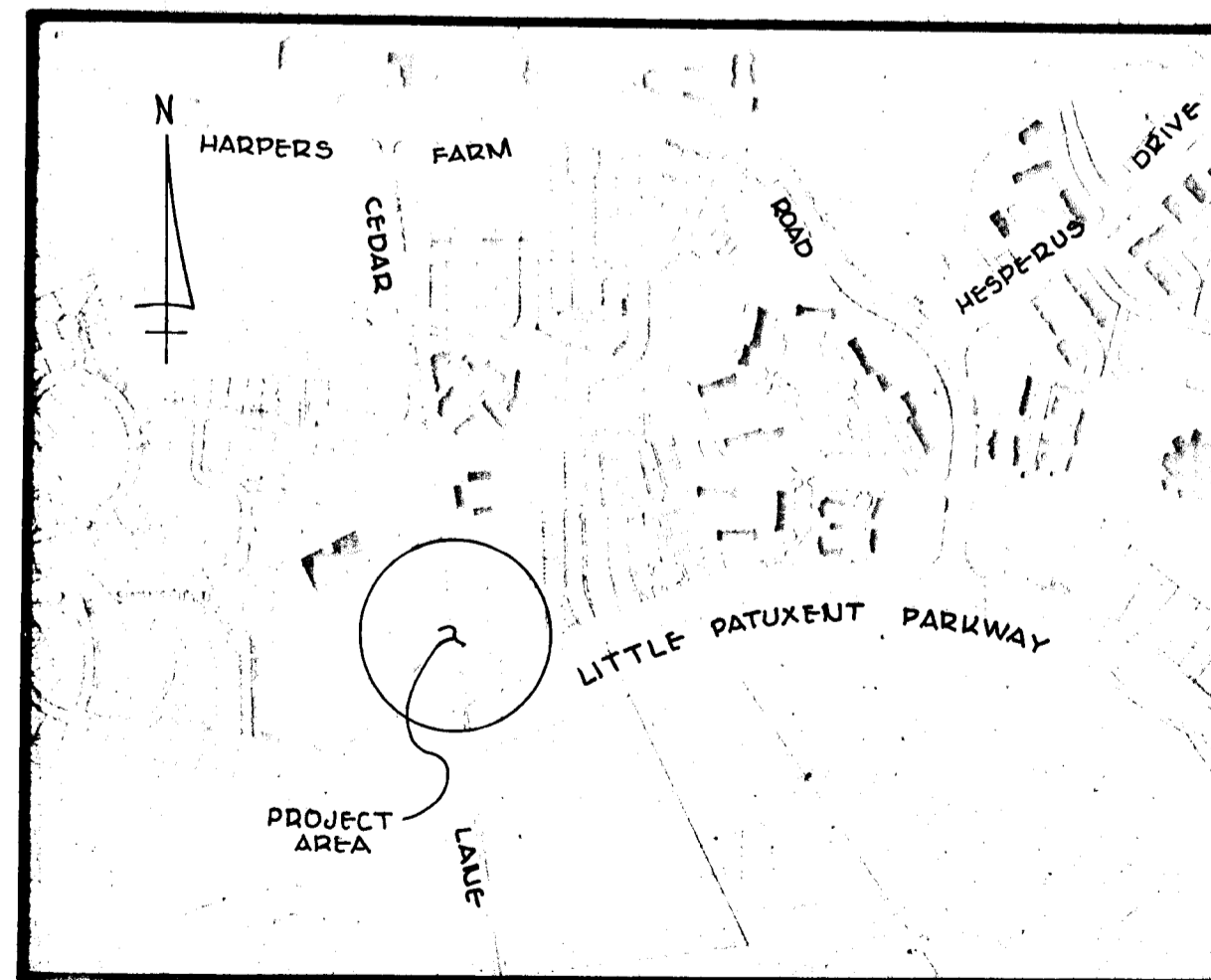
THE HOWARD RESEARCH AND DEVELOPMENT CORP.  
COLUMBIA, MARYLAND



Scale - 1" = 100'

### KEY MAP

Scale - 1" = 800'



SHEET INDEX	
SHEET NO.	DESCRIPTION
1	Title Sheet
2	Little Patuxent Parkway - Plan & Profile
3	Little Patuxent Parkway - Plan & Profile
4	Billinggate Road - Plan & Profile
5	Roadway Details
6	Roadway Details
7	Little Patuxent Parkway - Storm Drain Profile
8	Cedar Lane - Plan & Profile
9	Cedar Lane - Misc. Details & Drain Profiles
10	Drainage Area Map - L.P.P. & Cedar Lane
11	Sediment Control Map

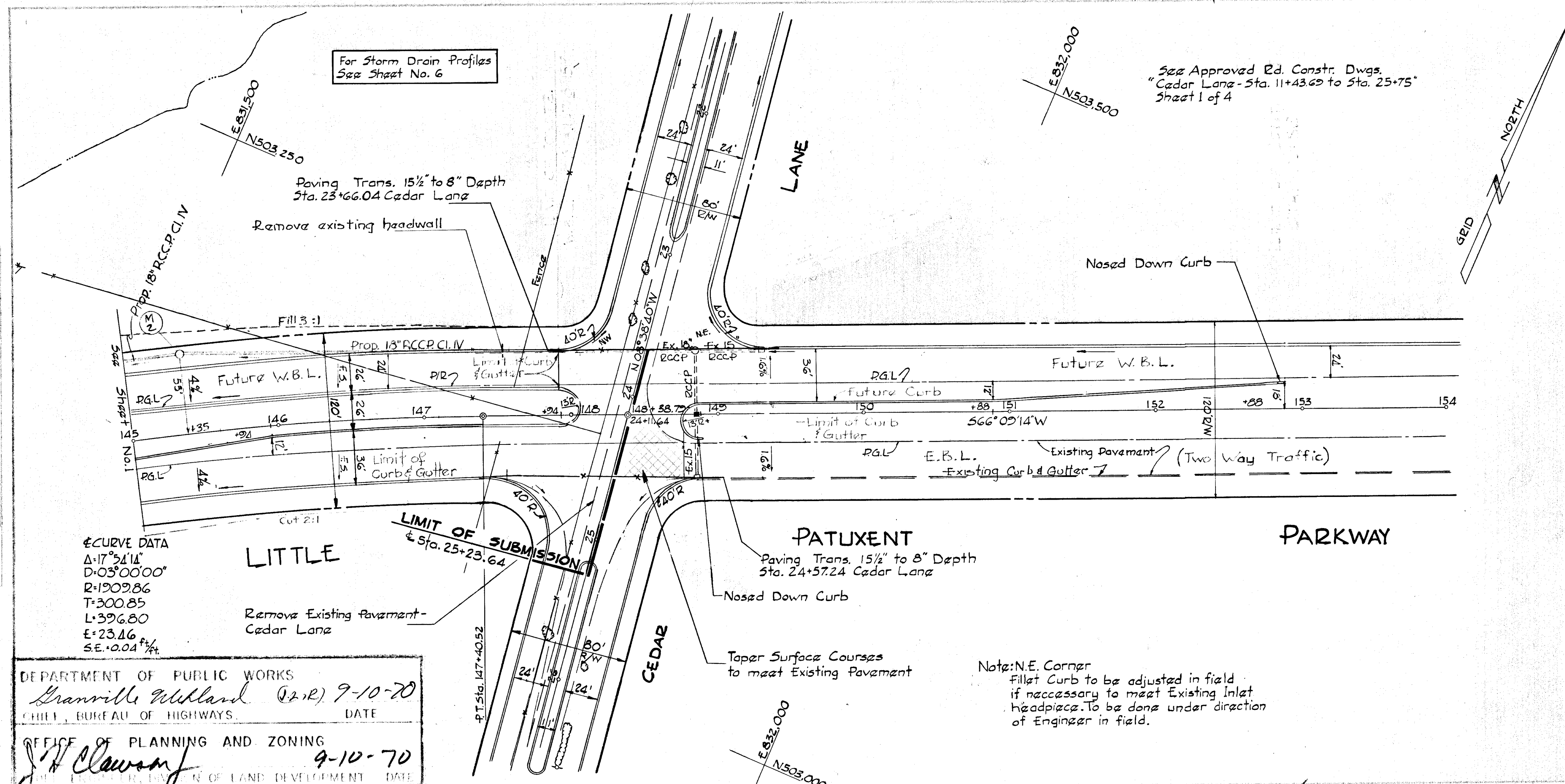
REVISIONS

DEPARTMENT OF PUBLIC WORKS  
*Swansfield, Md. 9-10-70*  
 CHIEF, BUREAU OF HIGHWAYS. DATE  
 PLANNING AND ZONING  
*J. H. Clawson* 9-10-70  
 ENGINEER, DIVISION OF LAND DEVELOPMENT DATE



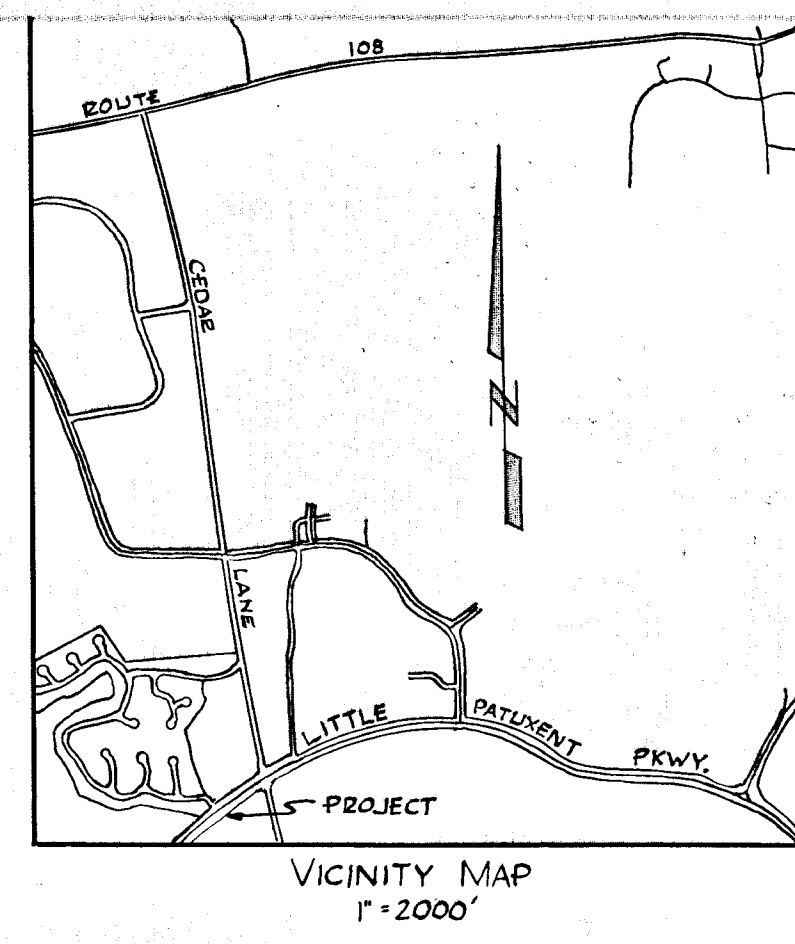
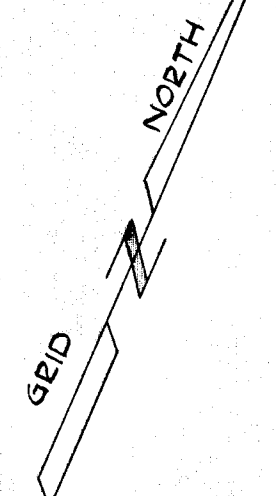
**PLAN**

SCALE: 1" = 50'



For Storm Drain Profiles  
See Sheet No. 6

See Approved Rd. Constr. Dwg.  
"Cedar Lane - Sta. 11+43.69 to Sta. 25+75"  
Sheet 1 of 4



**CURVE DATA**  
Δ=17°34'14"  
D=03°00'00"  
R=1309.86  
T=300.85  
L=396.80  
E=23.46 ft  
SE=0.04 ft

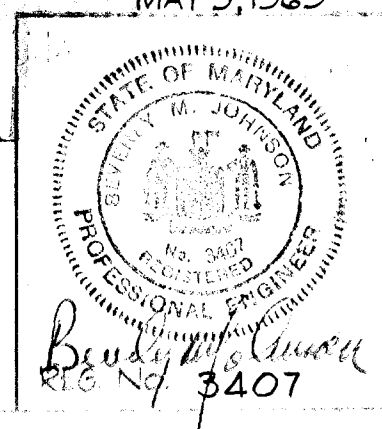
**LITTLE PATUXENT PARKWAY**

**PATUXENT PARKWAY**

**PARKWAY**

DEPARTMENT OF PUBLIC WORKS  
Baltimore, Maryland (D.R.) 9-10-70  
CHIEF, BUREAU OF HIGHWAYS DATE  
OFFICE OF PLANNING AND ZONING  
J.H. Clawson 9-10-70  
SUPERVISOR OF LAND DEVELOPMENT DATE

**PURDUM & JESCHKE**  
CONSULTING ENGINEERS  
& LAND SURVEYORS  
1023 NORTH CALVERT ST.  
BALTIMORE, MARYLAND 21202



Rev. No.	Rev. Description

**COLUMBIA**  
MARYLAND  
5TH ELECTION DISTRICT - HOWARD COUNTY  
HOWARD RESEARCH AND DEVELOPMENT CORP.  
THE VILLAGE OF CROWN KEYS - BALTIMORE, MARYLAND 21210

PROJECT AREA SECTION 4 AREA 4  
**VILLAGE OF HARPER'S CHOICE**

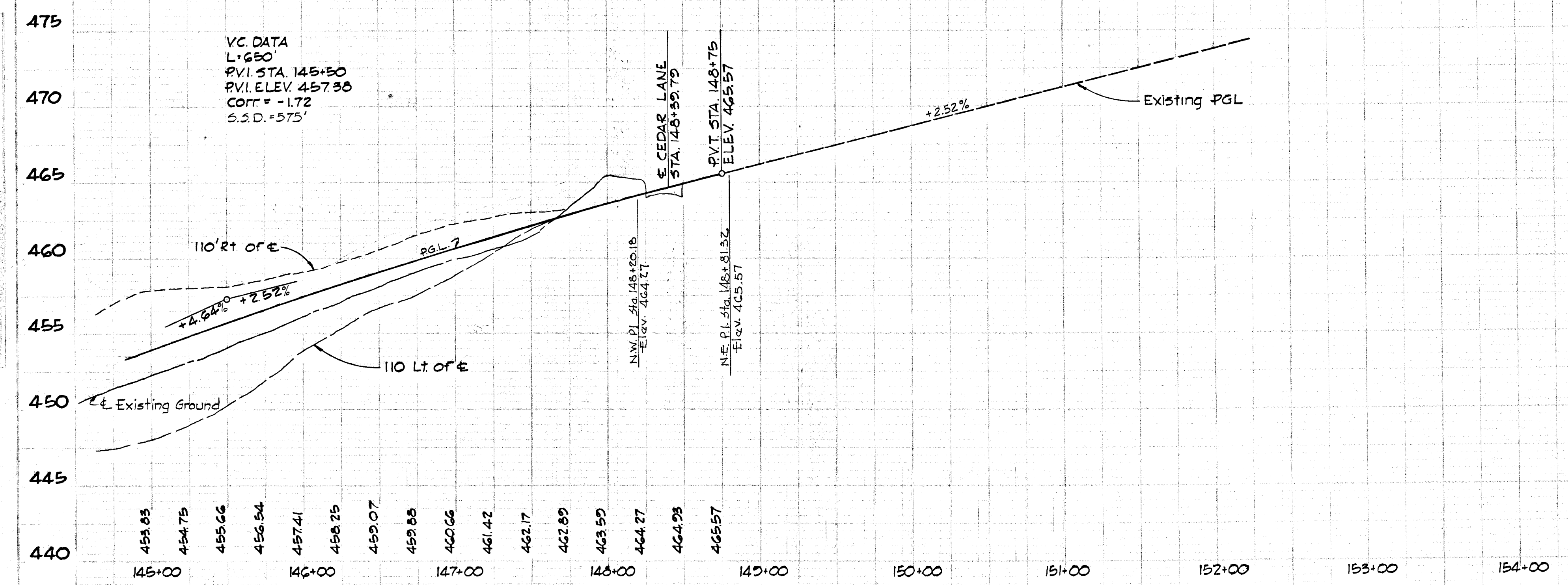
PROJECT TITLE **PLAN & PROFILE**  
**LITTLE PATUXENT PARKWAY**  
STA. 145+00 TO STA. 149+23.66

Des. By: E.L.B. Scale: AS SHOWN Job No. 5 of 11  
 Dem. By: D.M.W. Date: 5/20/69 C.C.F. No.  
 Chk. By: B.M.J. Approved

Note: N.E. Corner  
Fillet Curb to be adjusted in field  
if necessary to meet existing inlet  
headpiece. To be done under direction  
of Engineer in field.

**PROFILE**

SCALE: HORIZ. 1" = 50'  
VERT. 1" = 5'



**VC DATA**  
L=650'  
PVI STA. 145+50  
PVI ELEV. 457.35  
CORR. = -1.72  
S.S.D. = 575'

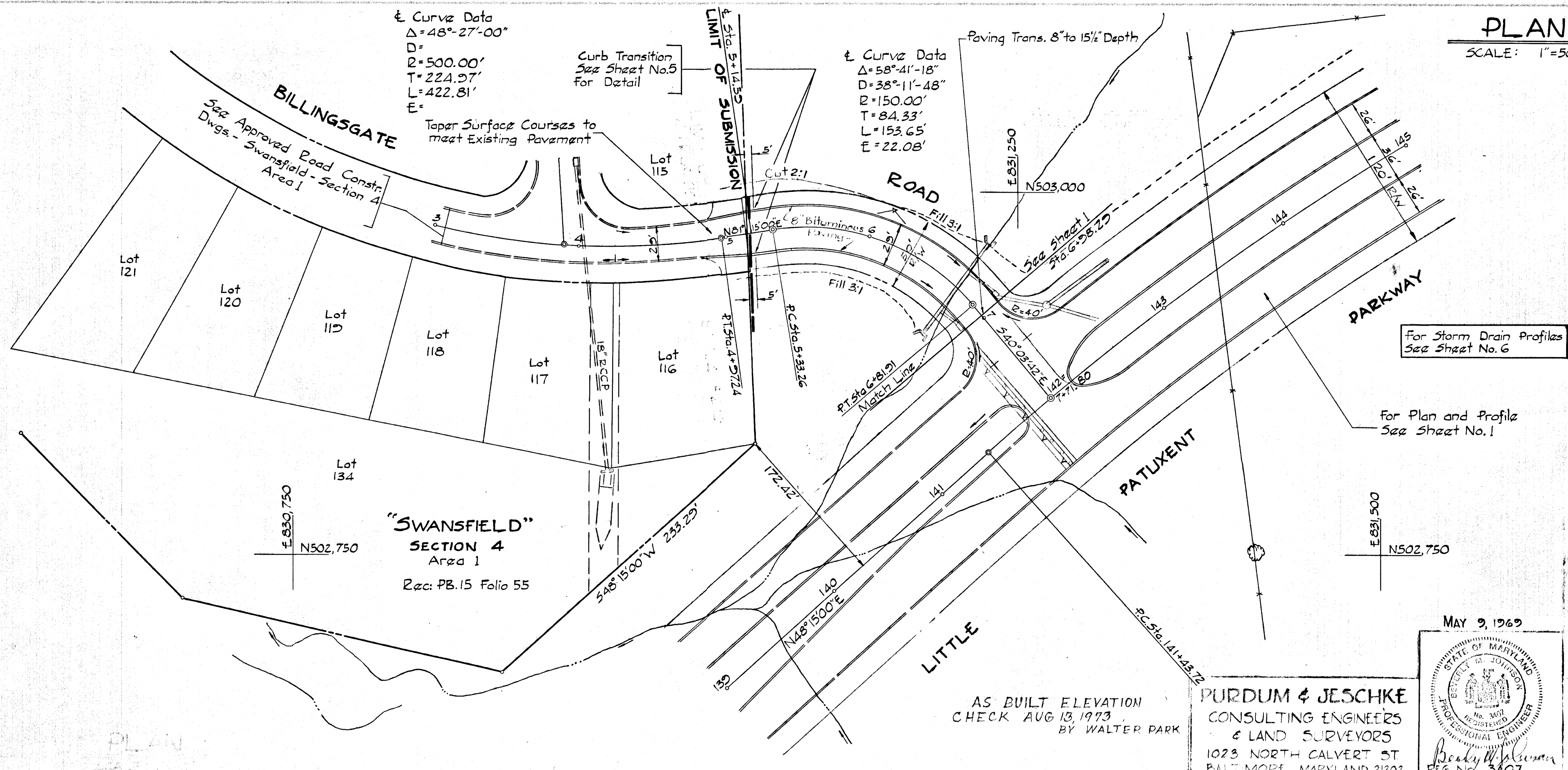
453.85	454.75	455.66	456.54	457.41	458.25	459.07	459.85	460.66	461.42	462.17	462.89	463.59	464.27	464.93	465.57
145+00	146+00	147+00	148+00	149+00	150+00	151+00	152+00	153+00	154+00						

PLAN  
 SHEET NO. 1  
 DATE 9-10-70

DEPARTMENT OF PUBLIC WORKS  
 Knoxville Hilland in (212) 9-10-70  
 CHIEF, BUREAU OF HIGHWAYS DATE

OFFICE OF PLANNING AND ZONING  
 J.H. Clawson 9-10-70  
 CHIEF, DIVISION OF LAND DEVELOPMENT DATE

PROFILE  
 SHEET NO. 1  
 DATE 9-10-70



Rev Date	Rev No	Revision Description

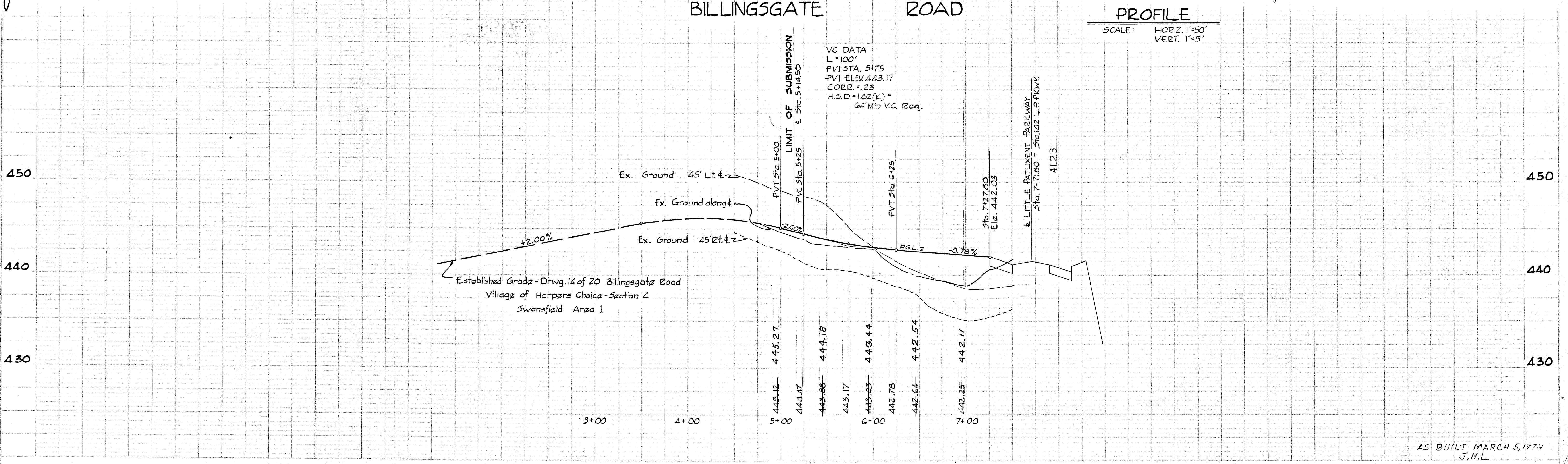
**COLUMBIA**  
 MARYLAND  
 5TH ELECTION DISTRICT, HOWARD COUNTY  
 HOWARD RESEARCH AND DEVELOPMENT CORP.  
 THE VILLAGE OF CROSS KEYS - BALTIMORE, MD 21210

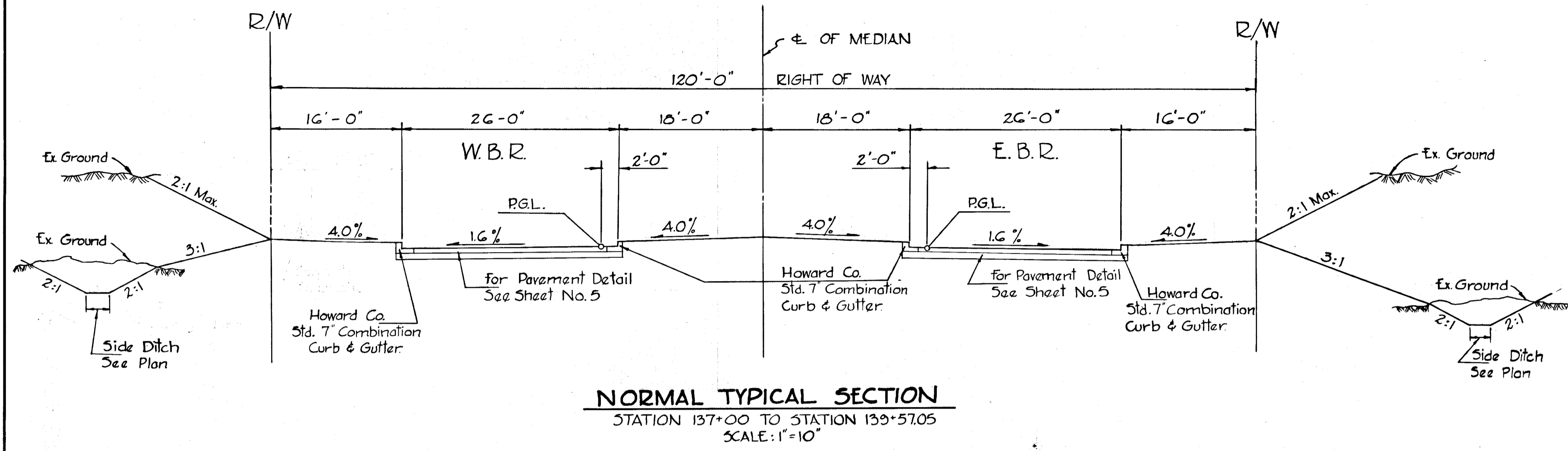
PROJECT AREA: SECTION 4 AREA 4  
 VILLAGE OF HARPER'S CHOICE

PROJECT TITLE: PLAN & PROFILE  
 BILLINGSGATE ROAD  
 STA. 4+82.10 TO STA. 7+71.80

Des. By: E.L.B. Scale: AS SHOWN Ewg. 4 of 11  
 Dra. By: D.J.D. Date: 9-10-70 C.C. 10  
 Chk. By: B.M.J. Approved

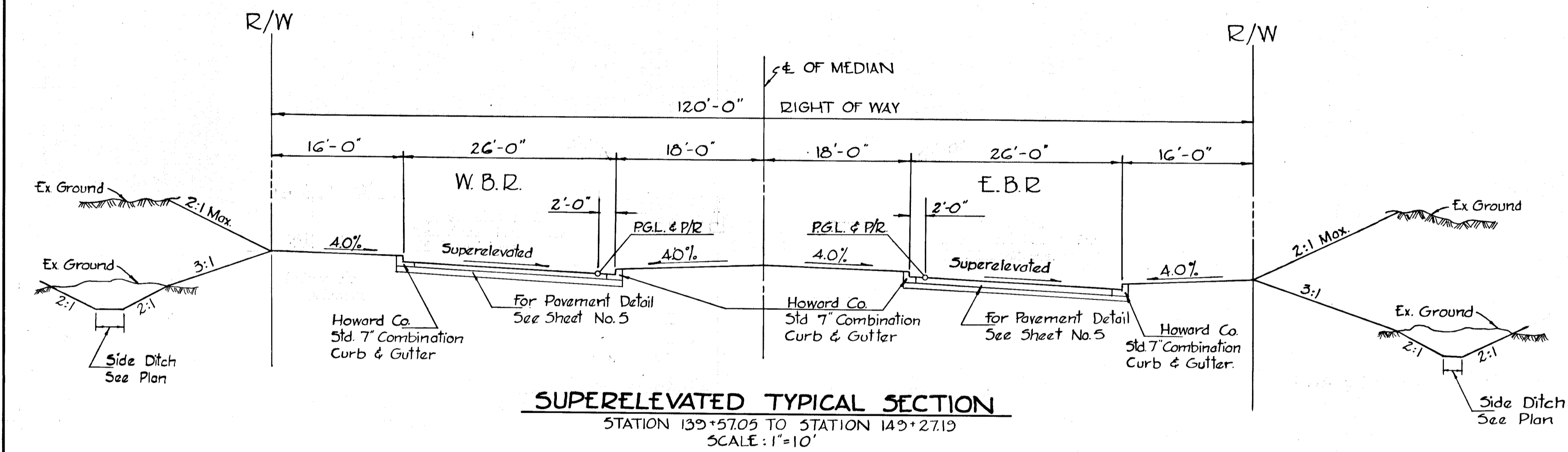
MAY 9 1969  
 BECKY W. JESCHKE  
 PROFESSIONAL ENGINEER  
 REG. NO. 3407



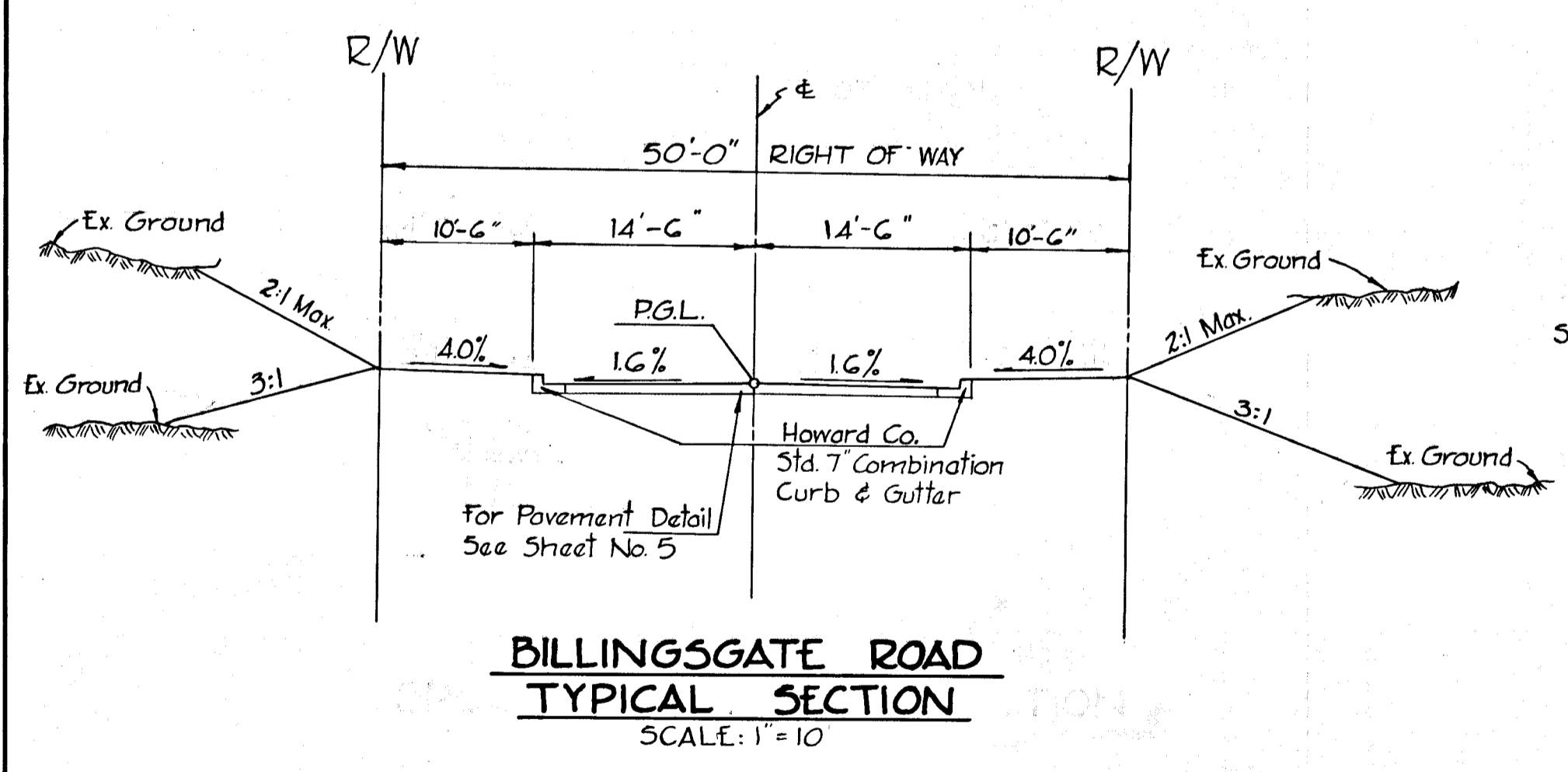


**NORMAL TYPICAL SECTION**  
STATION 137+00 TO STATION 139+57.05  
SCALE: 1"=10'

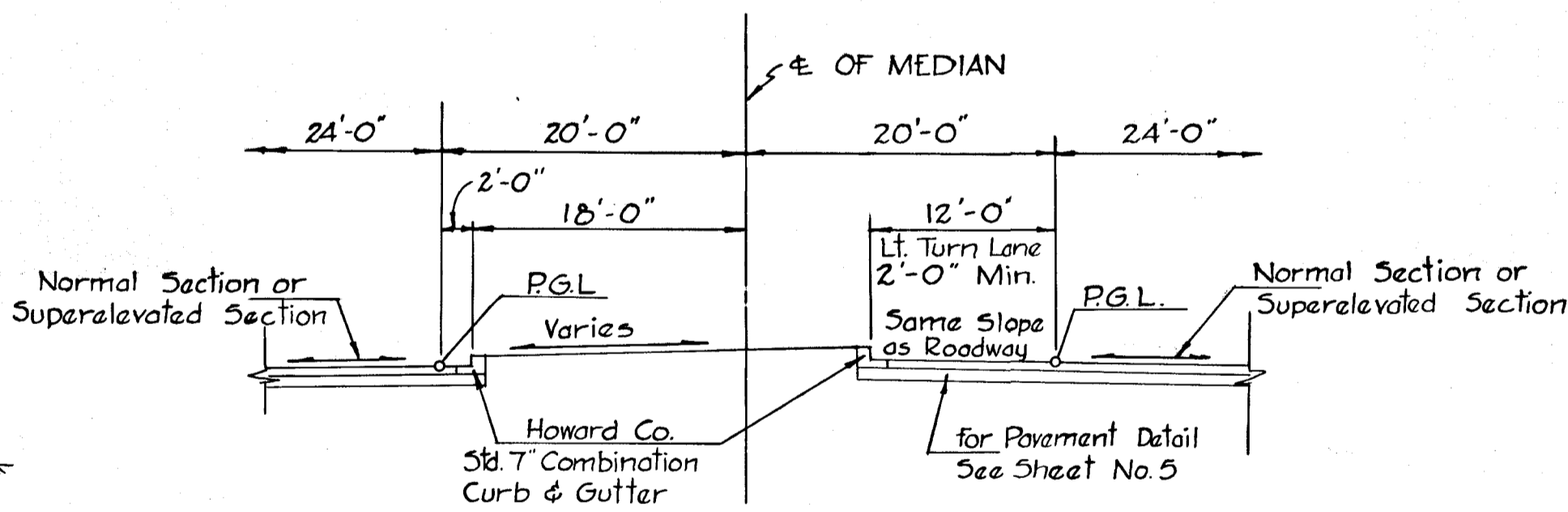
**NOTES**  
1. Place 4" Topsoil, Seed & Mulch on all slopes within Right of Way limits  
2. Transition slopes to be 3:1 in Fill Areas.



**SUPERELEVATED TYPICAL SECTION**  
STATION 139+57.05 TO STATION 149+27.19  
SCALE: 1"=10'



**BILLINGSGATE ROAD TYPICAL SECTION**  
SCALE: 1"=10'



**PARTIAL SECTION LEFT TURN LANE**  
SCALE: 1"=10'

SUPERELEVATION TRANSITION SCHEDULE					
STATION	LT. BOTTOM OF CURB	LT. MEDIAN BOTTOM CURB	RT. MEDIAN BOTTOM CURB	P.G.L.	RT. BOTTOM OF CURB
139+57.05	433.98	434.40	434.48	434.96	433.98
+75	434.31	434.64	434.73	434.60	434.22
140+00	434.85	435.05	435.18	435.02	434.64
+25	435.47	435.54	435.70	435.52	435.14
+36.22	435.77	435.78	435.96	435.77	435.39
+50	436.16	436.10	436.30	436.09	435.71
+75	436.94	436.75	436.97	436.75	436.37
141+00	437.79	437.47	437.70	437.48	437.10
+15.98	438.34	437.94	438.16	437.96	437.58
+25	438.71	438.26	438.53	438.28	437.85
+43.72	439.46	438.91	439.25	438.94	438.42
+50	439.72	439.14	439.48	439.17	438.62
+75	440.81	440.10	440.53	440.14	439.47
142+00	441.97	441.13	—	441.18	440.39
+25	443.21	442.24	—	442.30	441.39
+37.05	443.56	442.52	—	442.60	441.64
FULL SUPERELEVATION 0.04'/ft.					
146+47.19	459.94	458.90	459.54	458.98	458.02
+50	460.02	458.99	459.63	459.07	458.12
+75	460.71	459.82	460.36	459.88	459.05
147+00	461.37	460.60	461.08	460.66	459.95
+25	462.01	461.37	461.76	461.42	460.83
+40.52	462.41	461.85	462.20	461.89	461.37
+50	462.64	462.13	462.45	462.17	461.70
+60.02	463.06	462.65	462.90	462.68	462.30
+75	463.24	462.86	463.11	462.89	462.51
148+00	463.82	463.57	463.81	463.59	463.21
+08.18	464.01	463.80	—	463.82	463.44
+20.18	464.27	464.13	—	464.14	463.76
+25	464.38	464.26	—	464.27	463.89
+45.48	464.83	464.82	—	464.82	464.44
+50	464.92	464.93	—	464.93	464.55
+75	465.44	465.58	—	465.57	465.19
+81.32	465.57	465.75	—	465.73	465.35
149+00	465.79	466.06	—	466.04	465.66
+25	466.30	466.70	—	466.67	466.29
+27.19	466.35	466.76	—	466.73	466.35

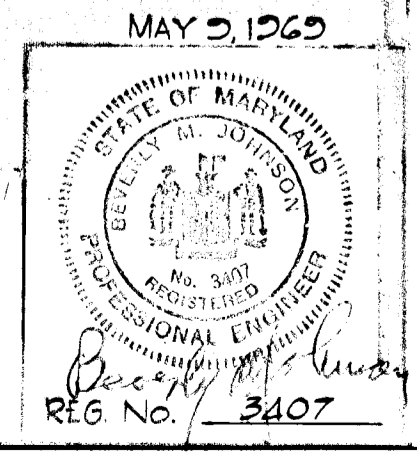
**ABBREVIATIONS**

- E.B.R. - EAST BOUND ROADWAY
- W.B.R. - WEST BOUND ROADWAY
- R/W - RIGHT OF WAY
- P/R - POINT OF ROTATION
- P.G.L. - PROFILE GRADE LINE

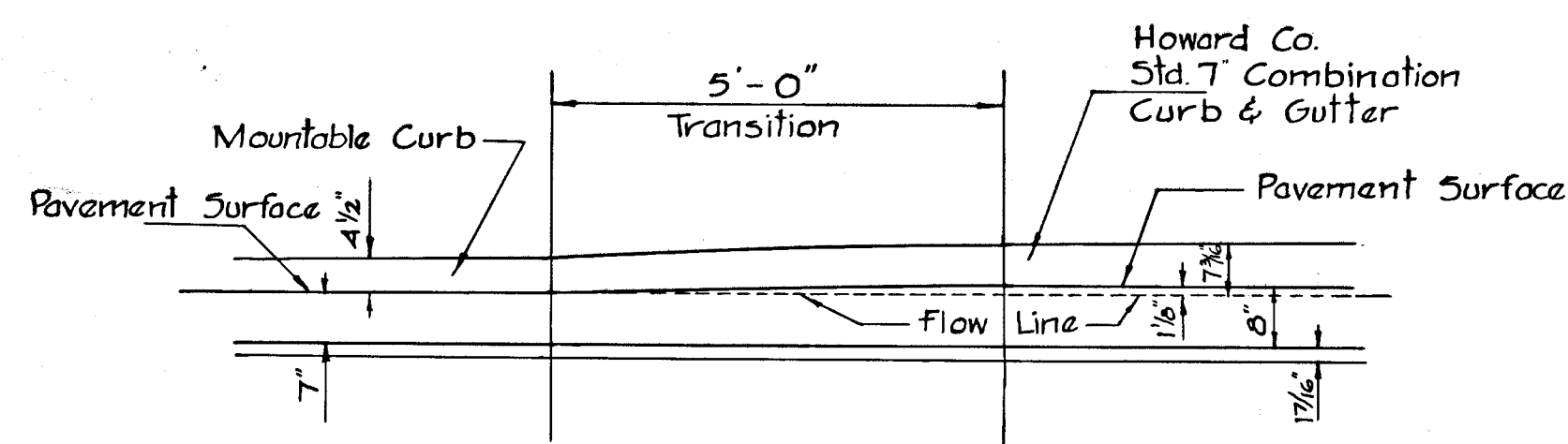
DEPARTMENT OF PUBLIC WORKS  
*Ernest M. McClain* S.E.R. 9-10-70  
 CHIEF, BUREAU OF HIGHWAYS. DATE

OFFICE OF PLANNING AND ZONING  
*J.W. Clawson* 9-10-70  
 ENGINEER, DIVISION OF LAND DEVELOPMENT. DATE

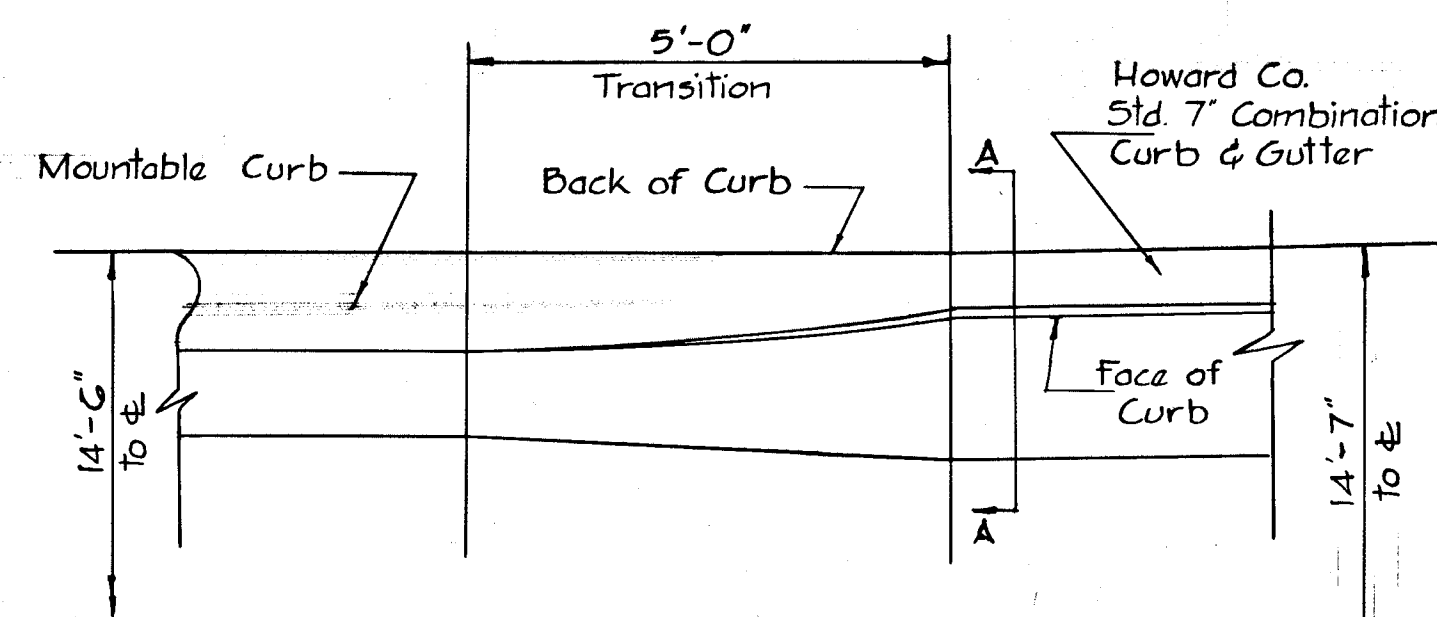
**PURDUM & JESCHKE**  
 CONSULTING ENGINEERS  
 & LAND SURVEYORS  
 1023 NORTH CALVERT ST.  
 BALTIMORE, MARYLAND 21202



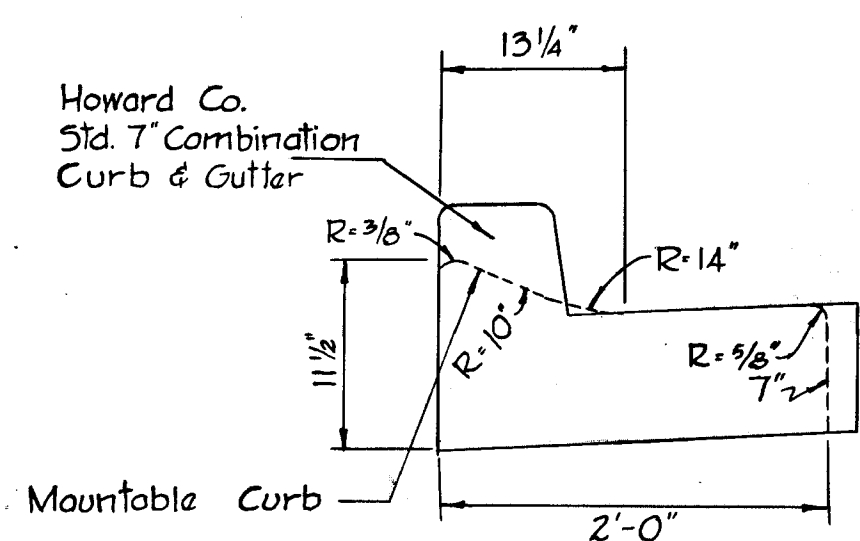
Rev Date	Rev No	Revision Description
<b>COLUMBIA</b>		
M A R Y L A N D		
5TH ELECTION DISTRICT - HOWARD COUNTY		
HOWARD RESEARCH AND DEVELOPMENT CORP.		
THE VILLAGE OF CLAY BEVE - BALTIMORE, MARYLAND 21210		
PROJECT AREA	SECTION 4	AREA 4
VILLAGE OF HARPER'S CHOICE		
ROADWAY DETAILS		
Des. By	E.L.B.	As Shown
Drawn By	M.M.W.	5/5/1969
Check By	G.L.T.	



**ELEVATION**  
SCALE: 1/2" = 1'-0"

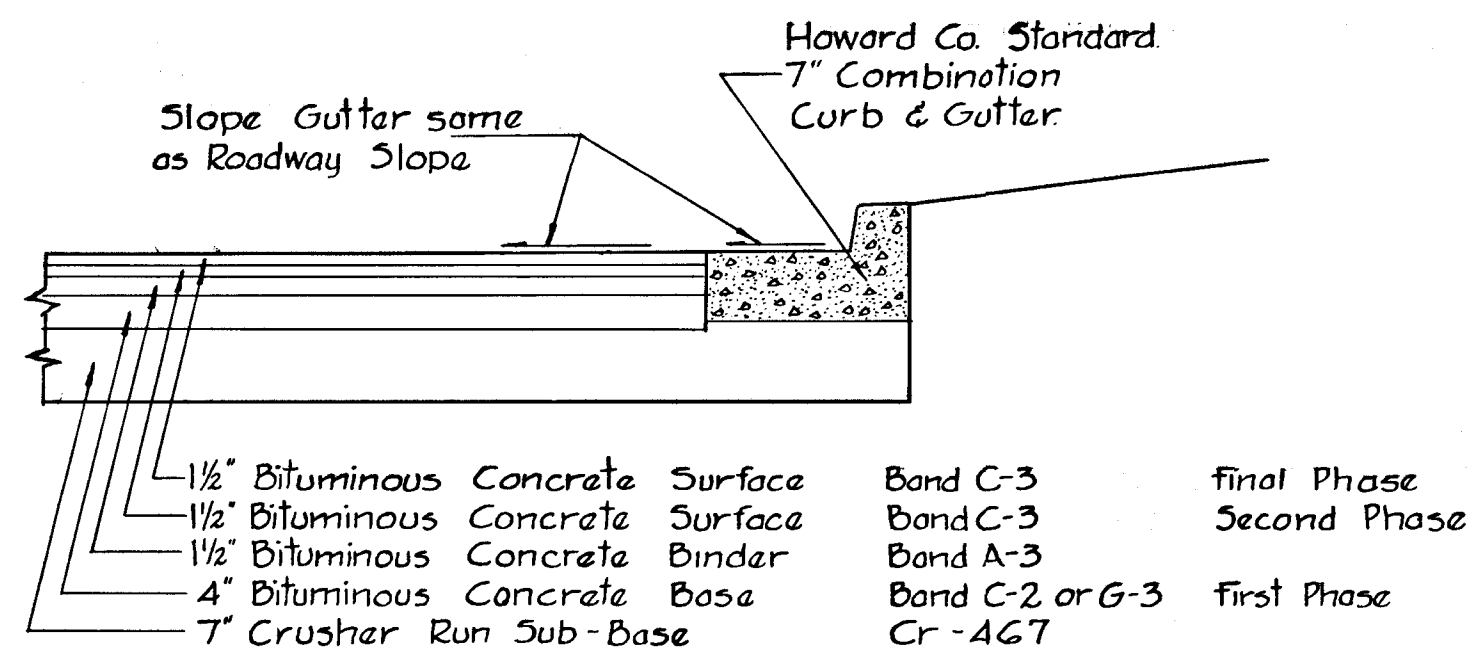


**PLAN**  
SCALE: 1/2" = 1'-0"



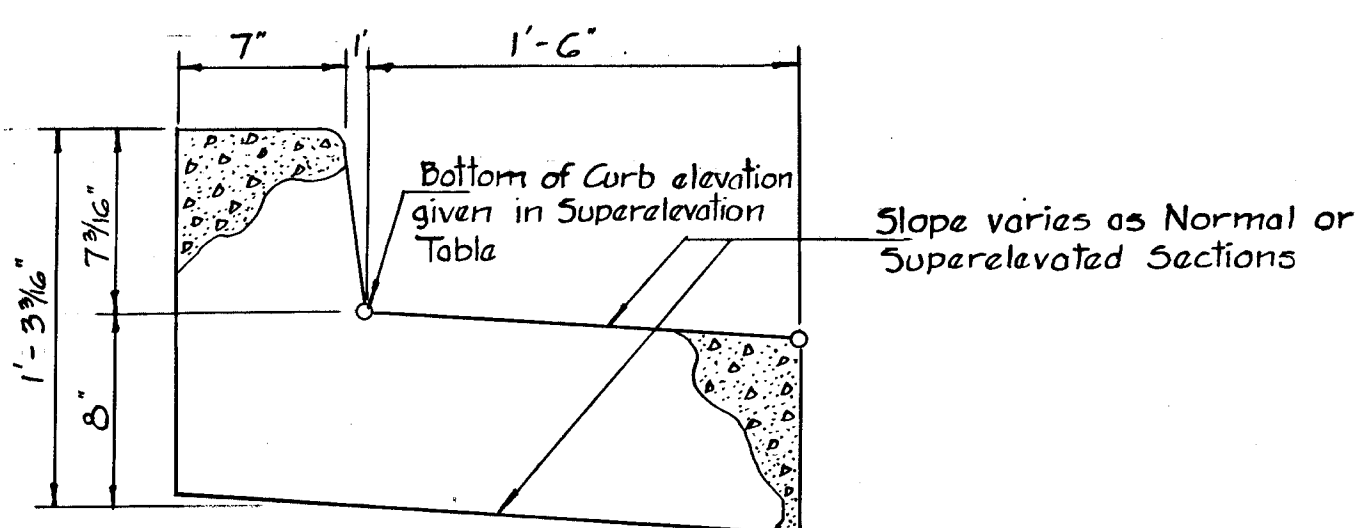
**SECTION A-A**  
SCALE: 1" = 1'-0"

**CURB TRANSITION DETAIL**



Clearing and Grading Article C-1  
 Subgrade Article C-2  
 Sub-Base Course Article C-25-2(a)  
 Base Course Article C-31 or C-33  
 Binder Course Article C-31  
 Surface Article C-31

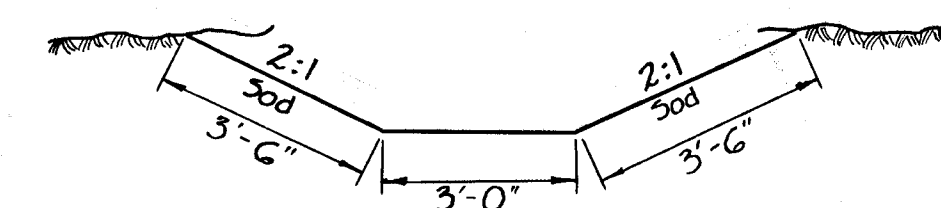
**1 1/2" PAVEMENT DETAIL**  
**LITTLE PATUXENT PARKWAY**  
SCALE: 1/2" = 1'-0"



**STANDARD 7" COMBINATION**  
**CURB AND GUTTER**  
SCALE: 1/2" = 1'-0"

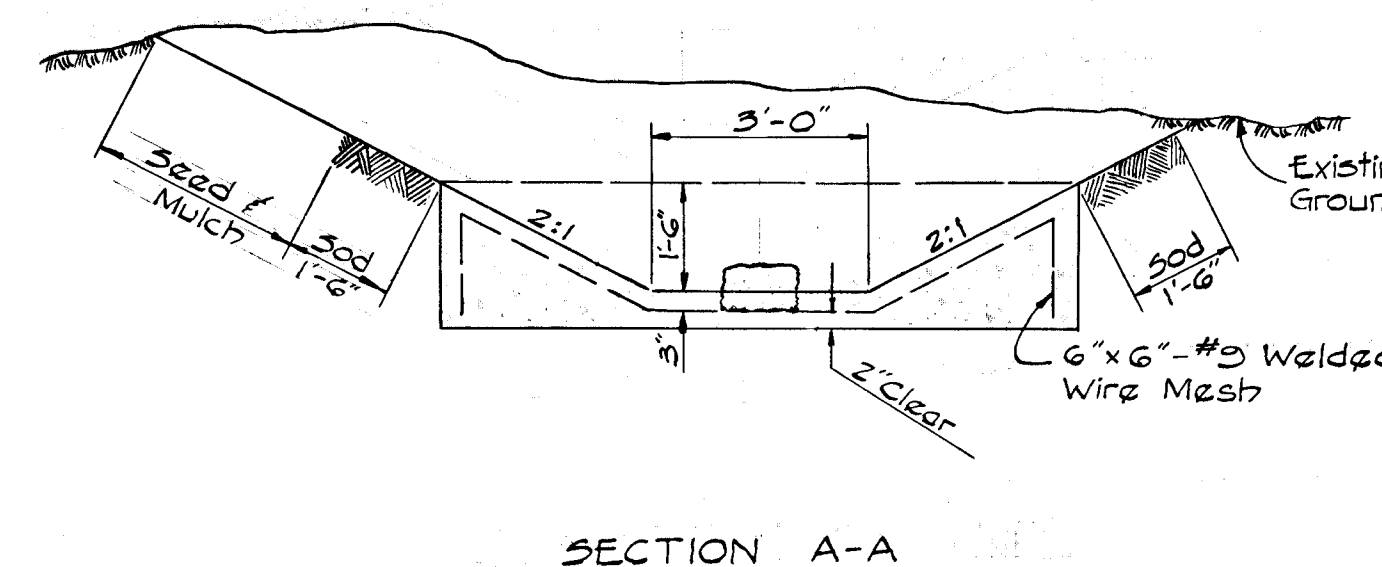
Bituminous Concrete Surface Course	1 1/2"	Band C-3
Bituminous Concrete Binder Course	1 1/2"	Band A-3
Bituminous Concrete Base - Place in one Course	5"	Band C-2 or G-3

**8" PAVEMENT DETAIL**  
**BILLINGS GATE ROAD**  
NO SCALE



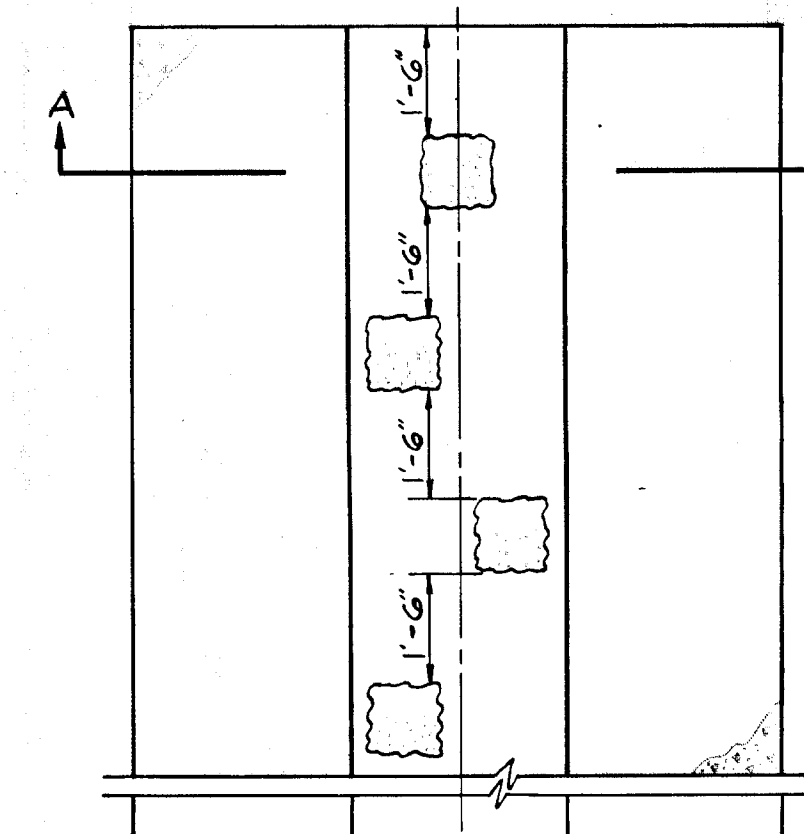
**INLET AND OUTLET DITCH**  
SCALE: 1" = 3'

**IMPROVED CHANNEL DETAILS**  
SCALE: 3/8" = 1'

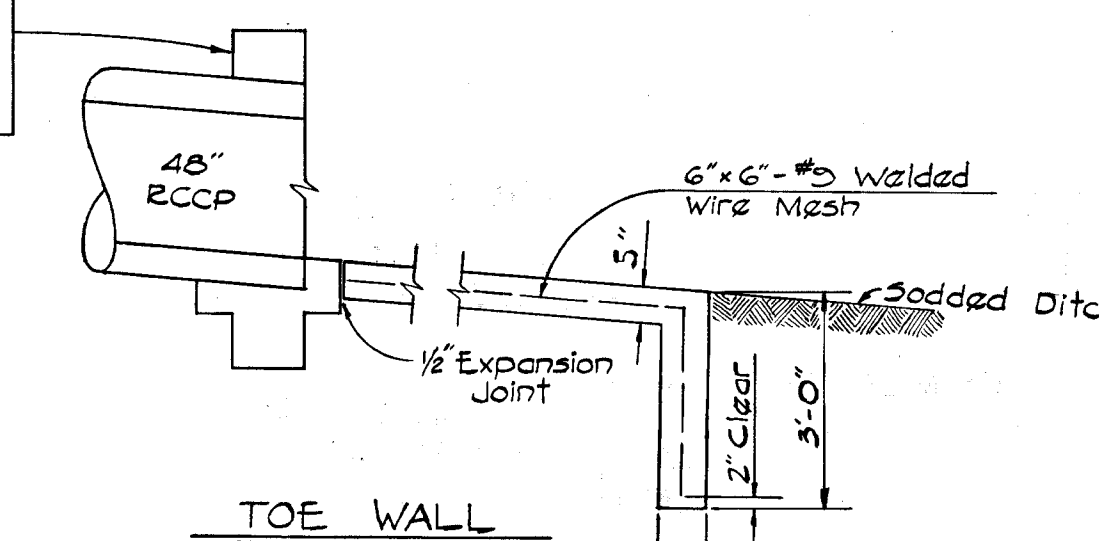


**SECTION A-A**

**FLAT BOTTOM DITCH**



for details of Type "F" Concrete Endwall, see Ho. Co. Standard Road & Street Details Dwg. No. D-56



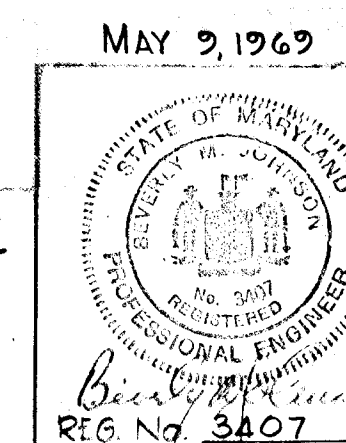
**TOE WALL**

**NOTES**

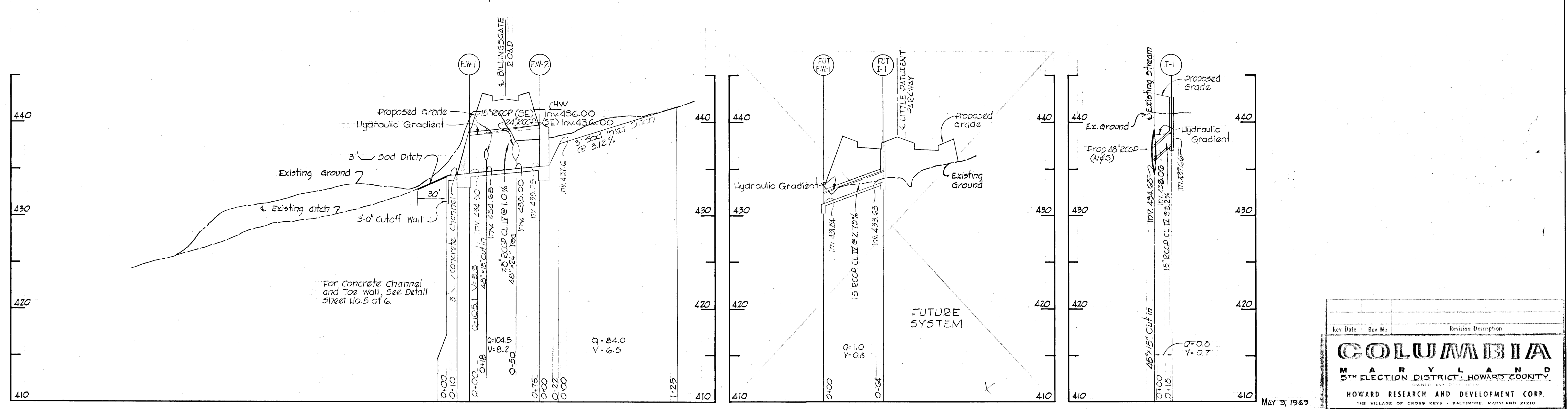
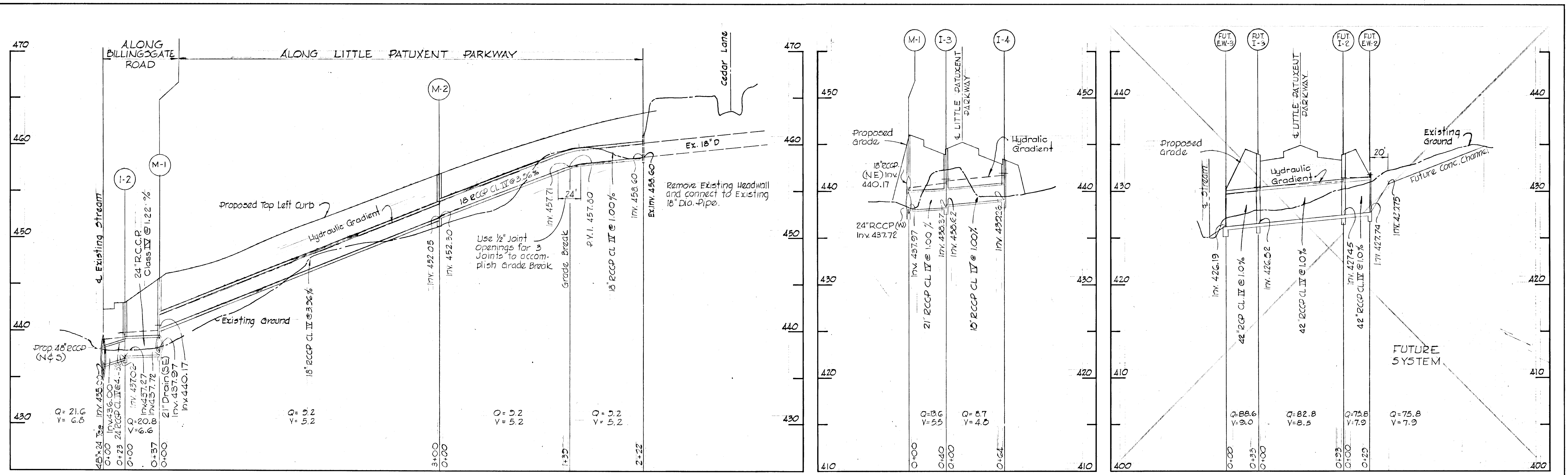
1. For lengths of concrete & sodded channels see plan & Profiles.
2. Stones shall be 2 Man stone, Normal size shall be 12"x12"x8".
3. First stone shall be placed 1'-6" minimum from end of headwall @ E of apron.
4. No stones are to be located within 3' from end of apron.

DEPARTMENT OF PUBLIC WORKS	9-10-70
Branchville Pkbland (V.I.C.)	DATE
BUREAU OF HIGHWAYS	
OFFICE OF PLANNING AND ZONING	9-10-70
ENGINEER DIVISION OF LAND DEVELOPMENT	DATE

**PURDUM & JESCHKE**  
CONSULTING ENGINEERS  
& LAND SURVEYORS  
1023 NORTH CALVERT ST.  
BALTIMORE, MARYLAND 21202



Rev Date	Rev No	Revision Description
<b>COLUMBIA</b>		
M A R Y L A N D		
5TH ELECTION DISTRICT - HOWARD COUNTY		
OWNER AND DEVELOPER		
HOWARD RESEARCH AND DEVELOPMENT CORP.		
THE VILLAGE OF CROSS KEYS - BALTIMORE, MARYLAND 21210		
PROJECT AREA	SECTION 4	AREA 4
VILLAGE OF HARPER'S CHOICE		
PROJECT TITLE		
ROADWAY DETAILS		
Des By	E.L.B.	Scale As Shown
Des By	M.M.W.	Date 5/5/1969
CH By	G.L.T.	Approved
Dwg. No	6 of 11	C.C.F. No



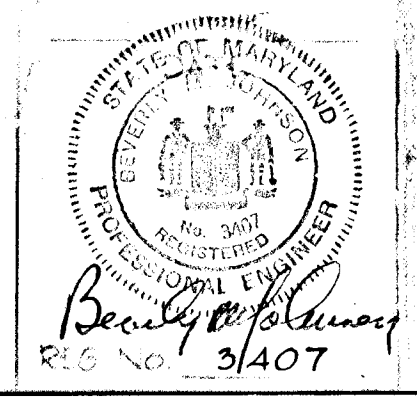
DEPARTMENT OF PUBLIC WORKS  
*Granville E. Holland, Jr.* 9-10-70  
 CHIEF, BUREAU OF HIGHWAYS, DATE

OFFICE OF PLANNING AND ZONING  
*J. H. Lawson* 9-10-70  
 CHIEF, DIVISION OF LAND DEVELOPMENT, DATE

**STORM DRAIN PROFILES**

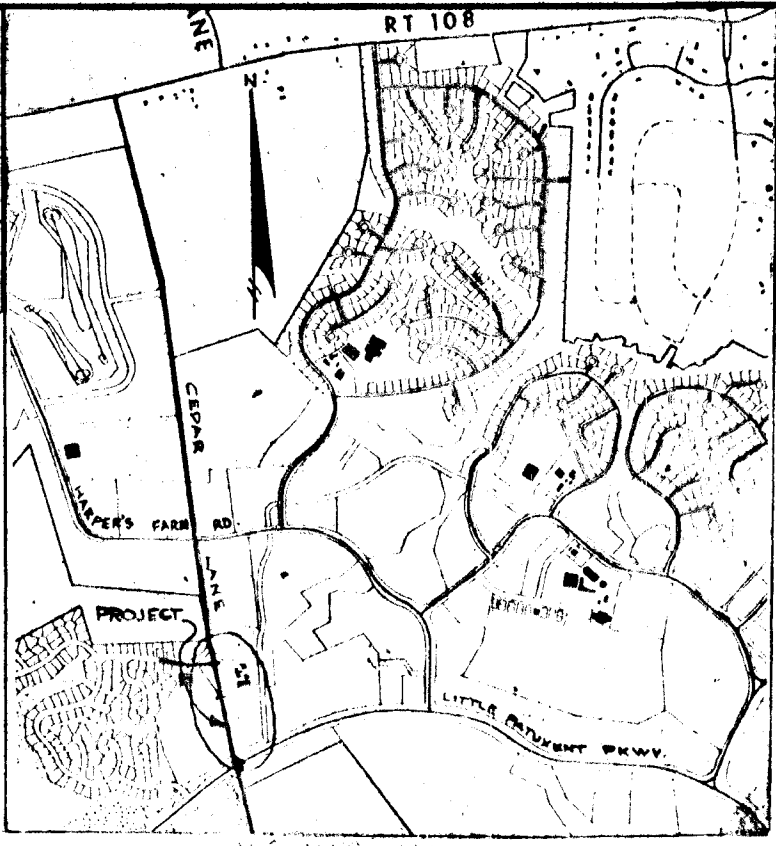
Scale: Horiz: 1"=50'  
 Vert: 1"=5'

PURDUM & JESCHKE  
 CONSULTING ENGINEERS  
 & LAND SURVEYORS  
 1028 NORTH CALVERT ST  
 BALTIMORE, MARYLAND 21202



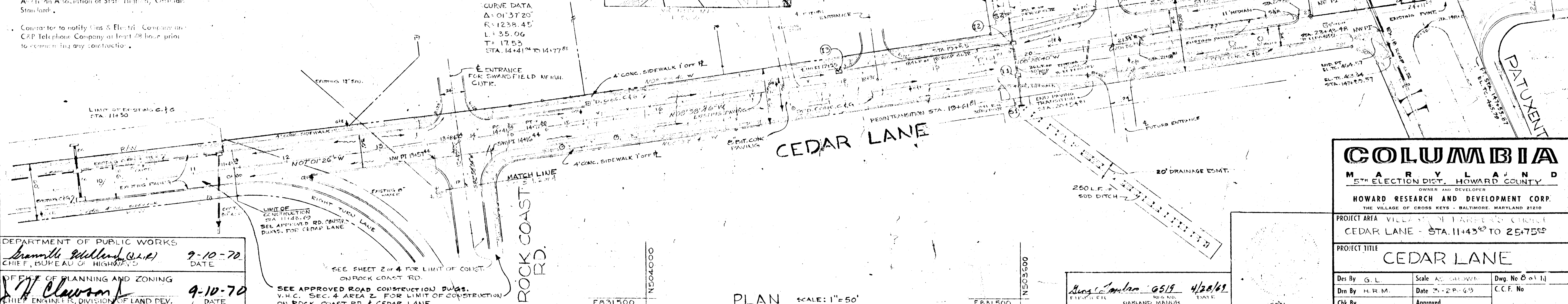
Rev Date	Rev No	Revision Description
<b>COLUMBIA</b>		
M A R Y L A N D		
5 <sup>TH</sup> ELECTION DISTRICT, HOWARD COUNTY		
HOWARD RESEARCH AND DEVELOPMENT CORP. THE VILLAGE OF CROSS KEYS - BALTIMORE, MARYLAND 21210		
PROJECT AREA		SECTION 4 AREA 4
VILLAGE OF HARPER'S CHOICE		
PROJECT TITLE		
LITTLE PATUXENT PARKWAY		
Des By	G.L.T.	Date: 5/18/69
Drawn By	R.D.B.	Approved
Checked By	B.M.J.	
Dwg No		7 of 11
C.C.F. No		

QUANTITIES			STORM DRAINAGE STRUCTURE SCHEDULE				
ITEM	DESCRIPTION	UNIT	QUANTITY	NO.	TYPE	LOCATION	REMARKS
1	7" CONC. CURB & GUTTER	L.F.	525.4	11	5" CONC.	124.85 CEDAR LA.	NO. CO. CONST. CODE R3.104
2	4" CONC. SIDEWALK 4" THK.	SQ. YDS.	179.26	12	DEL. 5" CONC.	174.95 CEDAR LA.	NO. CO. CONST. CODE R3.101
3	8" CONC. SIDEWALK 4" THK.	SQ. YDS.	777.0	13	DEL. 5" CONC.	174.95 CEDAR LA.	NO. CO. CONST. CODE R3.101
4	20" DRAINAGE EXMT.	NO.	1	14	20" SUPP. PT. WALL	194.95 CEDAR LA.	NO. CO. CONST. CODE R3.101
5	30" DRAINAGE EXMT.	NO.	1	15	20" SUPP. PT. WALL	194.95 CEDAR LA.	NO. CO. CONST. CODE R3.101



- NOTES:
- All details are from the "Road Construction Code" and Standard Specifications" issued or approved by the County Commission and the Maryland State Department of Transportation.
  - Cedar Lane and Rock Coast Road are to be widened for 25 mph. traffic speed in accordance with the AASHTO Association of State Highway Officials Standard.
  - Contractor to notify Gas & Electric Company and C&P Telephone Company at least 48 hours prior to commence any construction.

PLAN	SURVEYED	DATE
	PLOTTED	BY
	GRADES CHECKED	
	STRUCTURE NOTATION CHECKED	
	NO.	



DEPARTMENT OF PUBLIC WORKS  
*Samuel Hillman, C.E.*  
 CHIEF, BUREAU OF HIGHWAYS  
 DATE 9-10-70

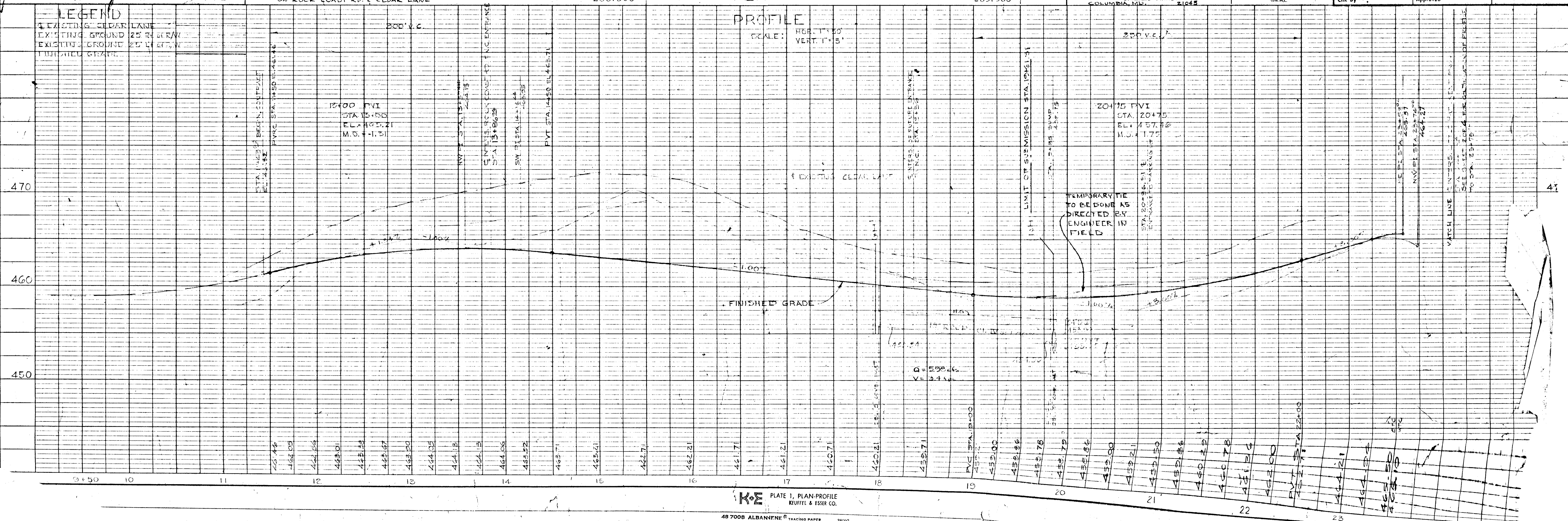
OFFICE OF PLANNING AND ZONING  
*H. Clawson*  
 CHIEF ENGINEER, DIVISION OF LAND DEV.  
 DATE 9-10-70

**COLUMBIA**  
 MARYLAND  
 5TH ELECTION DIST. HOWARD COUNTY  
 OWNER AND DEVELOPER  
 HOWARD RESEARCH AND DEVELOPMENT CORP.  
 THE VILLAGE OF CROSS KEYS - BALTIMORE, MARYLAND 21210

PROJECT AREA: VILLAGE OF CROSS KEYS, CORNER CEDAR LANE - STA. 11+43.69 TO 25+75.59

PROJECT TITLE: CEDAR LANE

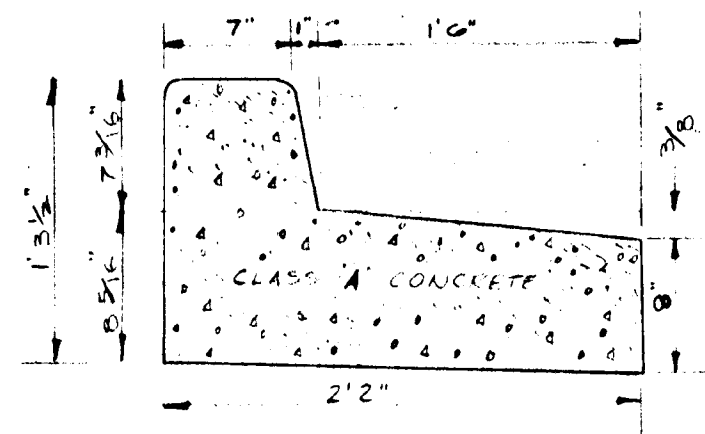
Des By: G.L. Scale: AS SHOWN Dwg. No: 6 of 11  
 Dwn By: H.R.M. Date: 9-29-69 C.C.F. No.  
 Chk By: Approved



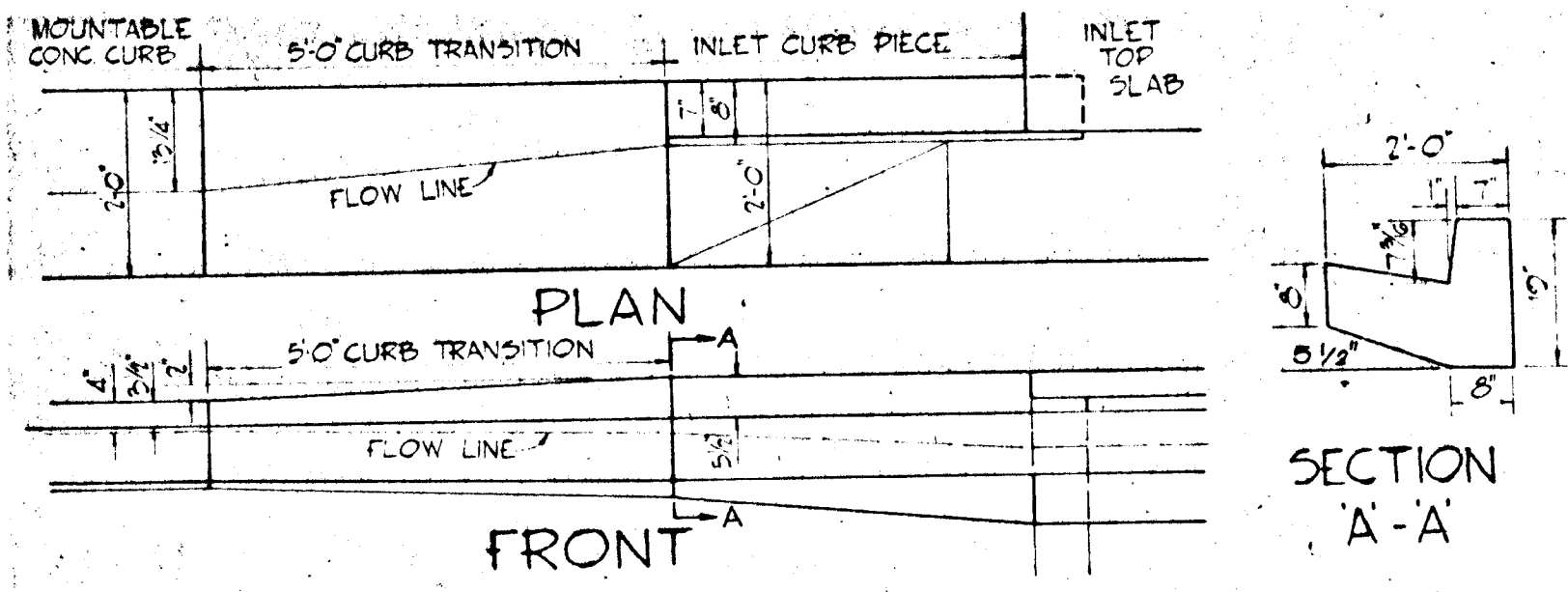
PROFILE	SURVEYED	DATE
	PLOTTED	BY
	GRADES CHECKED	
	STRUCTURE NOTATION CHECKED	
	NO.	



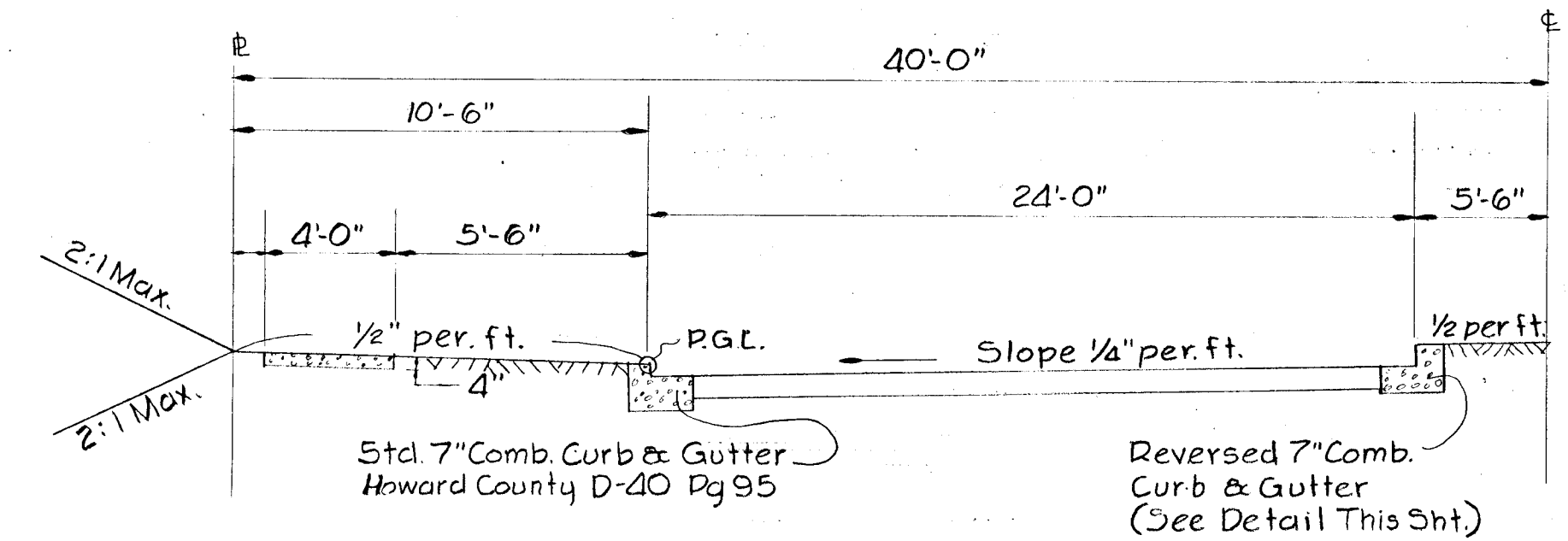
PLAN  
 REVISIONS  
 NO. BY DATE  
 1. BY DATE  
 2. BY DATE  
 3. BY DATE  
 4. BY DATE  
 5. BY DATE  
 6. BY DATE  
 7. BY DATE  
 8. BY DATE  
 9. BY DATE  
 10. BY DATE  
 11. BY DATE  
 12. BY DATE  
 13. BY DATE  
 14. BY DATE  
 15. BY DATE  
 16. BY DATE  
 17. BY DATE  
 18. BY DATE  
 19. BY DATE  
 20. BY DATE  
 21. BY DATE  
 22. BY DATE  
 23. BY DATE  
 24. BY DATE  
 25. BY DATE  
 26. BY DATE  
 27. BY DATE  
 28. BY DATE  
 29. BY DATE  
 30. BY DATE  
 31. BY DATE  
 32. BY DATE  
 33. BY DATE  
 34. BY DATE  
 35. BY DATE  
 36. BY DATE  
 37. BY DATE  
 38. BY DATE  
 39. BY DATE  
 40. BY DATE  
 41. BY DATE  
 42. BY DATE  
 43. BY DATE  
 44. BY DATE  
 45. BY DATE  
 46. BY DATE  
 47. BY DATE  
 48. BY DATE  
 49. BY DATE  
 50. BY DATE  
 51. BY DATE  
 52. BY DATE  
 53. BY DATE  
 54. BY DATE  
 55. BY DATE  
 56. BY DATE  
 57. BY DATE  
 58. BY DATE  
 59. BY DATE  
 60. BY DATE  
 61. BY DATE  
 62. BY DATE  
 63. BY DATE  
 64. BY DATE  
 65. BY DATE  
 66. BY DATE  
 67. BY DATE  
 68. BY DATE  
 69. BY DATE  
 70. BY DATE  
 71. BY DATE  
 72. BY DATE  
 73. BY DATE  
 74. BY DATE  
 75. BY DATE  
 76. BY DATE  
 77. BY DATE  
 78. BY DATE  
 79. BY DATE  
 80. BY DATE  
 81. BY DATE  
 82. BY DATE  
 83. BY DATE  
 84. BY DATE  
 85. BY DATE  
 86. BY DATE  
 87. BY DATE  
 88. BY DATE  
 89. BY DATE  
 90. BY DATE  
 91. BY DATE  
 92. BY DATE  
 93. BY DATE  
 94. BY DATE  
 95. BY DATE  
 96. BY DATE  
 97. BY DATE  
 98. BY DATE  
 99. BY DATE  
 100. BY DATE



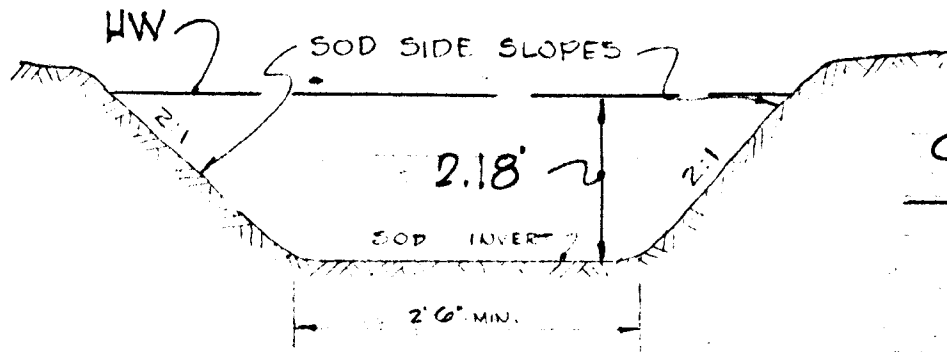
REVERSED 7' COMBINATION CURB & GUTTER  
 NO SCALE



5' CURB TRANSITION  
 NO SCALE



TYPICAL HALF SECTION  
 STA. 21+18<sup>00</sup> to STA. 22+88<sup>00</sup> CEDAR LAKE  
 NOT TO SCALE



TYPICAL SOD DITCH  
 NO SCALE

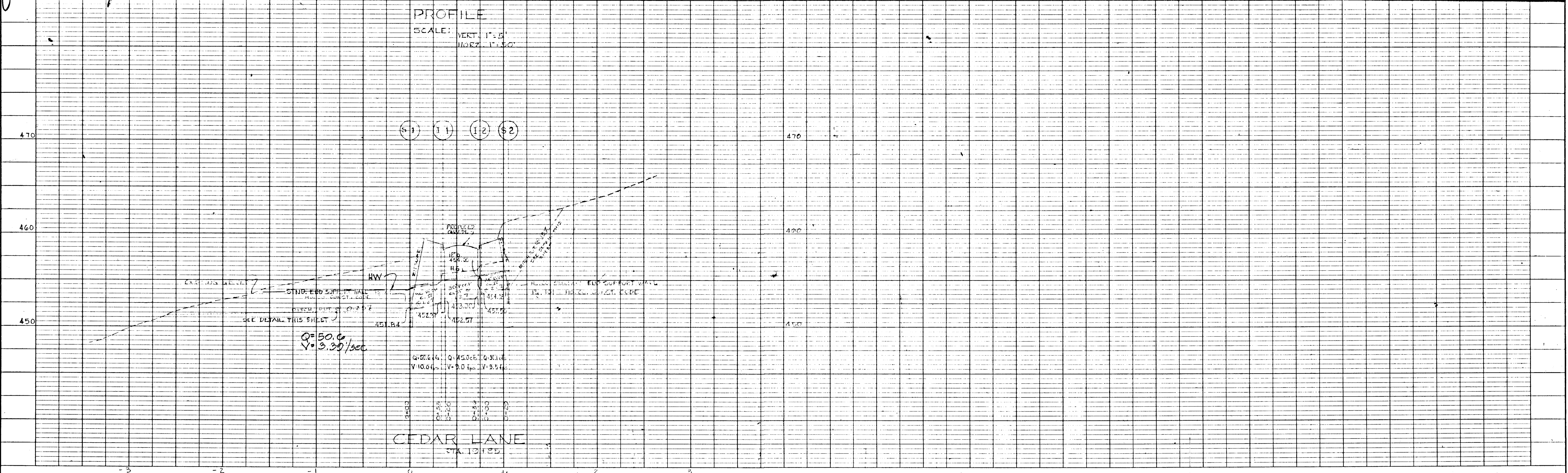
COMPUTATIONS FOR SOD DITCH  
 $Q_{read} = 50.6$   
 $Depth = 2.18'$   
 $Area = 4.5'$   
 $W = 6.97'$   
 $R = 0.65$   
 $R^{1/2} = 0.75$   
 $S = 0.25\%$   
 $n = 0.025$   
 $Q_{cap} = 50.8 \times 50.6$

NOTE: ALL EXISTING DITCHES APPROACHING PROPOSED DITCHES SHALL BE TRIMMED IN ACCORDANCE WITH ARTICLE 6-6 OF THE HOWARD COUNTY ROAD CONST. CODE AND STANDARD SPECIFICATIONS.

DEPARTMENT OF PUBLIC WORKS  
*Spencer Hillland* 9-10-70  
 CHIEF, BUREAU OF HIGHWAYS. DATE  
 OFFICE OF PLANNING AND ZONING  
*J.H. Clawson* 9-10-70  
 CHIEF ENGINEER, DIVISION OF LAND DEVELOPMENT. DATE

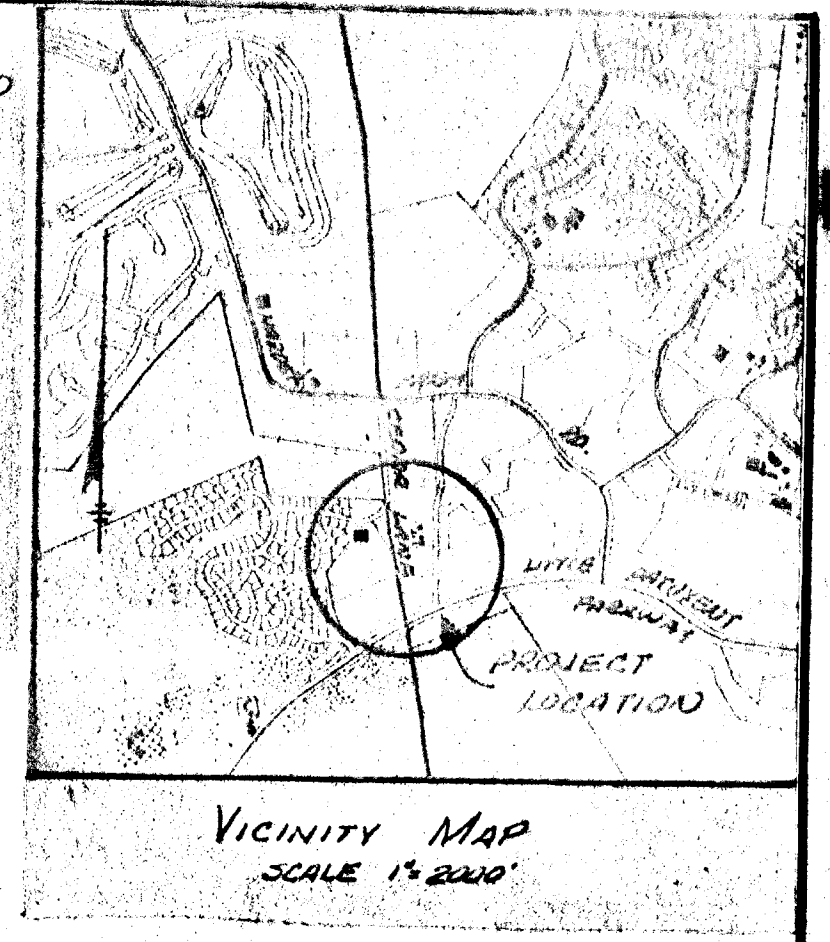
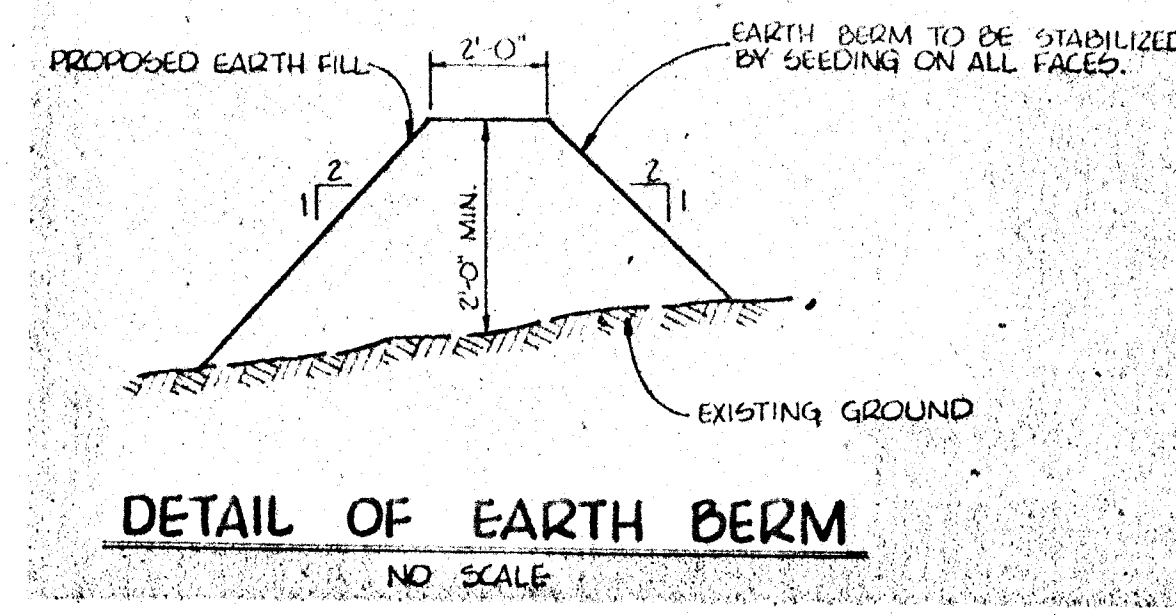
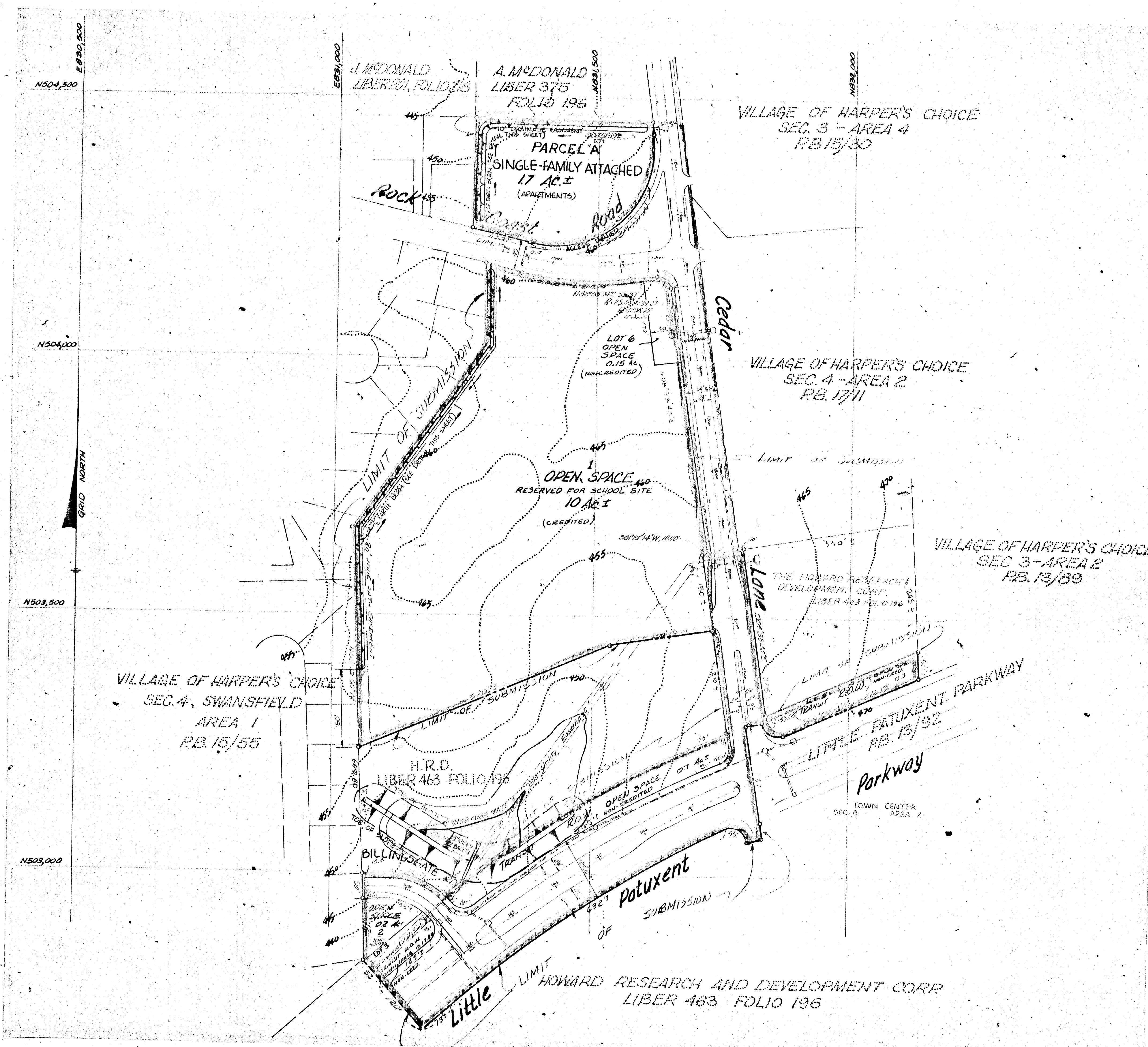
**COLUMBIA**  
 MARYLAND  
 5<sup>TH</sup> ELECTION DISTRICT HOWARD COUNTY, MD.  
 OWNER AND DEVELOPER  
**HOWARD RESEARCH AND DEVELOPMENT CORP.**  
 THE VILLAGE OF CROSS KEYS - BALTIMORE, MARYLAND 21210  
 PROJECT AREA VILLAGE OF HARPERD CHOICE  
**CEDAR LAKE**  
 PROJECT TITLE  
**MISC. DETAILS & DRAIN PROFILES**  
 Des By *S.L.* Scale *AS SHOWN* Dwg. No. *9-11*  
 Drn By *H.R.M.* Date *3-28-69* C.C.F. No.  
 Chk By *Approved*

*Spencer Hillland* 6519 4/26/69  
 ENGINEER REG. NO. DATE  
 COLUMBIA, M.D. 21043



PROFILE  
 REVISIONS  
 NO. BY DATE  
 1. BY DATE  
 2. BY DATE  
 3. BY DATE  
 4. BY DATE  
 5. BY DATE  
 6. BY DATE  
 7. BY DATE  
 8. BY DATE  
 9. BY DATE  
 10. BY DATE  
 11. BY DATE  
 12. BY DATE  
 13. BY DATE  
 14. BY DATE  
 15. BY DATE  
 16. BY DATE  
 17. BY DATE  
 18. BY DATE  
 19. BY DATE  
 20. BY DATE  
 21. BY DATE  
 22. BY DATE  
 23. BY DATE  
 24. BY DATE  
 25. BY DATE  
 26. BY DATE  
 27. BY DATE  
 28. BY DATE  
 29. BY DATE  
 30. BY DATE  
 31. BY DATE  
 32. BY DATE  
 33. BY DATE  
 34. BY DATE  
 35. BY DATE  
 36. BY DATE  
 37. BY DATE  
 38. BY DATE  
 39. BY DATE  
 40. BY DATE  
 41. BY DATE  
 42. BY DATE  
 43. BY DATE  
 44. BY DATE  
 45. BY DATE  
 46. BY DATE  
 47. BY DATE  
 48. BY DATE  
 49. BY DATE  
 50. BY DATE  
 51. BY DATE  
 52. BY DATE  
 53. BY DATE  
 54. BY DATE  
 55. BY DATE  
 56. BY DATE  
 57. BY DATE  
 58. BY DATE  
 59. BY DATE  
 60. BY DATE  
 61. BY DATE  
 62. BY DATE  
 63. BY DATE  
 64. BY DATE  
 65. BY DATE  
 66. BY DATE  
 67. BY DATE  
 68. BY DATE  
 69. BY DATE  
 70. BY DATE  
 71. BY DATE  
 72. BY DATE  
 73. BY DATE  
 74. BY DATE  
 75. BY DATE  
 76. BY DATE  
 77. BY DATE  
 78. BY DATE  
 79. BY DATE  
 80. BY DATE  
 81. BY DATE  
 82. BY DATE  
 83. BY DATE  
 84. BY DATE  
 85. BY DATE  
 86. BY DATE  
 87. BY DATE  
 88. BY DATE  
 89. BY DATE  
 90. BY DATE  
 91. BY DATE  
 92. BY DATE  
 93. BY DATE  
 94. BY DATE  
 95. BY DATE  
 96. BY DATE  
 97. BY DATE  
 98. BY DATE  
 99. BY DATE  
 100. BY DATE





- NOTES:**
- All sediment controls must be constructed prior to any grading.
  - No temporary sediment control structure may be removed or destroyed without approval of the Howard Soil Conservation District.
  - Area to be seeded within road R/W's shall use a seed mixture as follows: annual rye grass (20%), kentucky blue grass (20%) and kentucky 31 fescue (60%) at the rate of 200#/A. Sow with mechanical spreader rake, minimum of two (2) passes with "York Rake", cover and compact with cultipacker. Surface preparation to include ground limestone over topsoil surface area at the rate of 1 1/2 T/A (60#/1000<sup>2</sup>) commercial fertilizer (5-10-10) at the rate of 3/4 T/A (35#/1000<sup>2</sup>) and super-phosphate at the rate of 60Q/A (15#/1000<sup>2</sup>).



**CERTIFICATION BY THE PROFESSIONAL ENGINEER:**  
"I certify that the plan of development and the plan for control of silt and erosion meets the requirements, standards, and specifications of the Howard Soil Conservation District."  
(Seal) *George Lambra* 5/18/70  
Signature Date

**CERTIFICATION BY THE DEVELOPER:**  
"I certify that all development and/or construction will be done according to this plan of development and plan of silt and sediment control."  
(Seal) *Raymond C. Creamer, Jr.* 6/10/70  
Signature Date

"This development plan is approved for soil erosion and sediment control by the Howard Soil Conservation District."  
Reviewed \_\_\_\_\_ Dist. Conservation \_\_\_\_\_ Date \_\_\_\_\_  
Approved \_\_\_\_\_ Howard Soil Conservation District \_\_\_\_\_ Date \_\_\_\_\_

Rev. No.	Rev. Date	Revision Description
<b>COLUMBIA MARYLAND</b>		
THE ROUSE COMPANY THE VILLAGE OF CROSS KEYS, BALTIMORE, MARYLAND 21210		
PROJECT AREA VILLAGE OF HARPER'S CHOICE SECTION 4 AREA 4		
PROJECT TITLE SEDIMENT CONTROL MAP		
Des By T.J. RICE III	Scale 1" = 100'	Dwg No 11 OF 11
Drn By C.H. CREAMER, JR.	Date 5-18-70	C.C.F. No
CHK By	Approved	

*George Lambra 6519 5/18/70*  
ENGINEER REG. NO. DATE  
STATE OF MARYLAND PROFESSIONAL ENGINEER  
No. 6519  
EXPIRES 5/18/75

