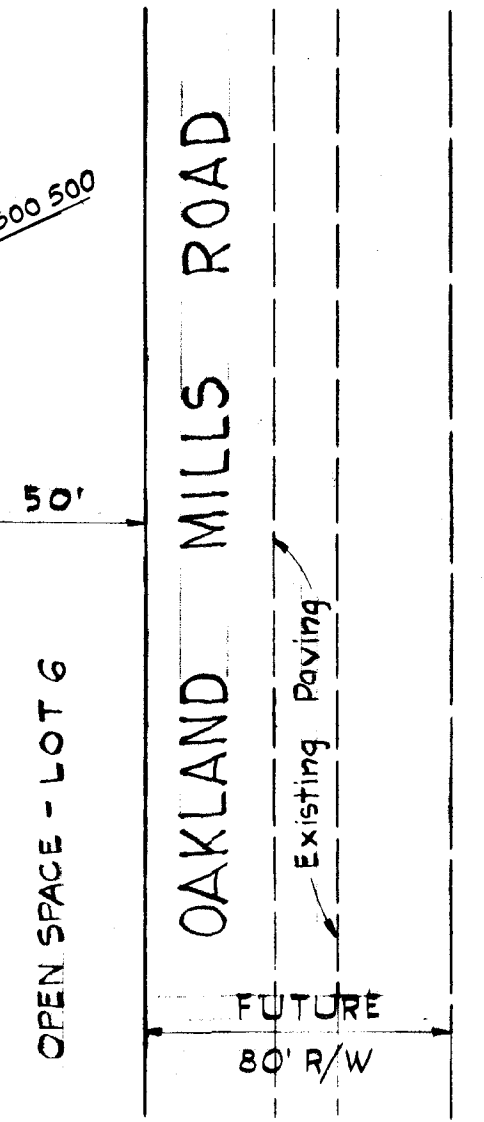


PLAN
SCALE: 1" = 50'

LEGEND
 — Standard 7" Comb. Curb & Gutter
 - - - Depressed Curb and Gutter
 NOTE: All street curb returns shall have 20' radii unless otherwise noted.



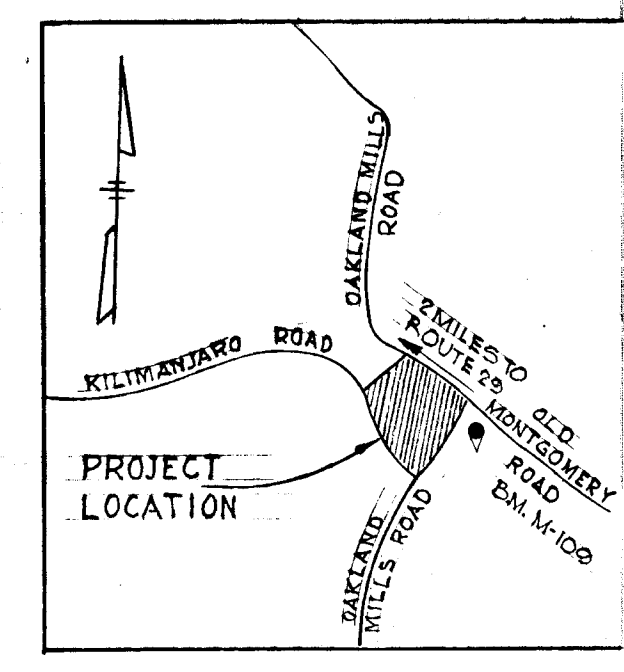
CURB & GUTTER TRANSITION DETAIL
No Scale

Curve Data

P.C.	0+64.93 to 2+02.62	0+64.82 to 1+48.99	1+48.99 to 1+97.41
P.T.	0+89.27	3+06.47	1+04.97
Δ	13° 56' 38"	35° 00' 00"	65° 43' 47"
R	100.00'	170.00'	35.00'
Arc.	24.34'	103.85'	40.15'
T	12.23'	53.60'	22.61'
Ch.	24.28'	102.24'	37.99'
Ch. Brg.	N67° 11' 41" E	S42° 43' 22" W	N03° 05' 15" E

Curve Data for Linear Profile

P.C.	1+25.41 to P.R.C. 2+86.62	P.R.C. 2+86.62 to P.T. 3+13.35
Δ	256° 34' 46"	76° 34' 39"
R	36.00'	20.00'
Arc.	161.21'	26.73'
Tan.		15.79'
Ch.		24.78'
Ch. Brg.		N 26° 29' 18" W

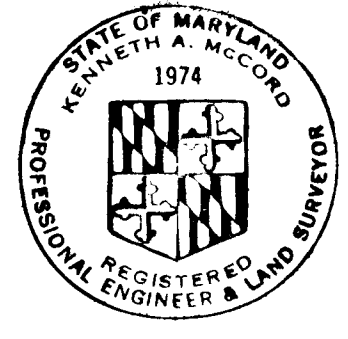


VICINITY MAP
Scale: 1" = 2000'

BEUCH MAP M-109
 41.0 feet south east of the centerline of Oakland Mills Road, 17.0 feet west of the centerline of Old Montgomery Road, 3.0 feet south of pole *24148, 2.0 north east of a metal witness post, set in a concrete post projecting 2 inches.

HOWARD HOMES INC.
 OWNER AND DEVELOPER
 P.O. Box 802
 Columbia, Maryland

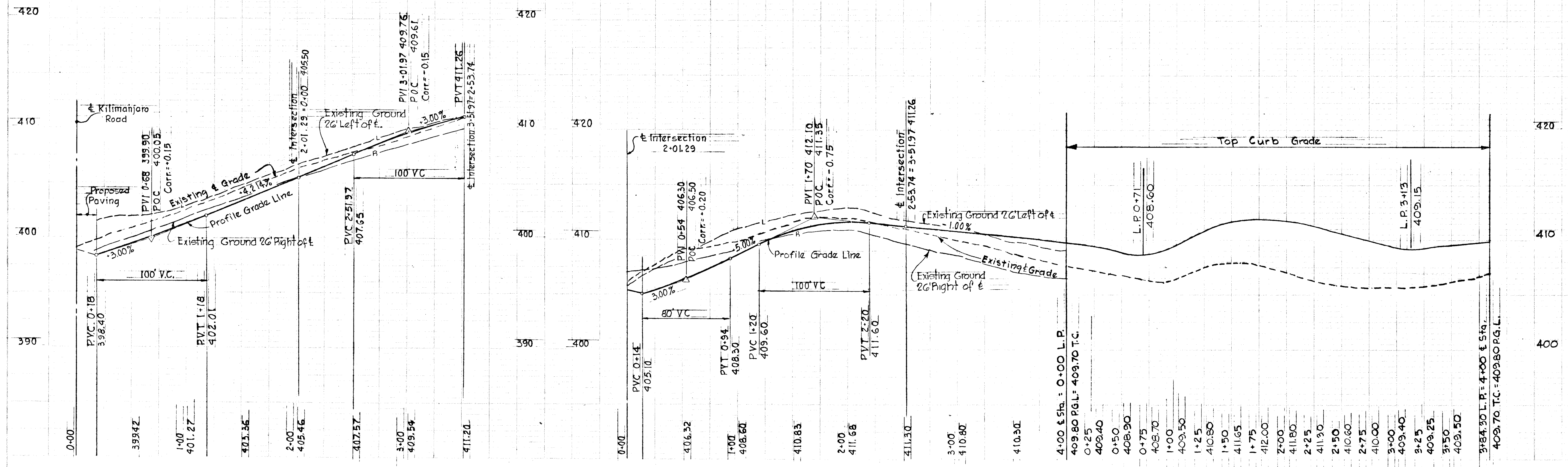
Kenneth A. McCord
KENNETH A. MCCORD
 Registered Engineer No. 1974
WHITMAN, REQUARDT & ASSOCIATES
 ENGINEERS
 1304 ST. PAUL STREET
 BALTIMORE, MARYLAND



DEPARTMENT OF PUBLIC WORKS
Greenville W. Mahland 6/17/70
 CHIEF, BUREAU OF HIGHWAYS
 OFFICE OF PLANNING AND ZONING
J. H. Clawson 6-15-70
 CHIEF ENGINEER, DIVISION OF LAND DEVELOPMENT

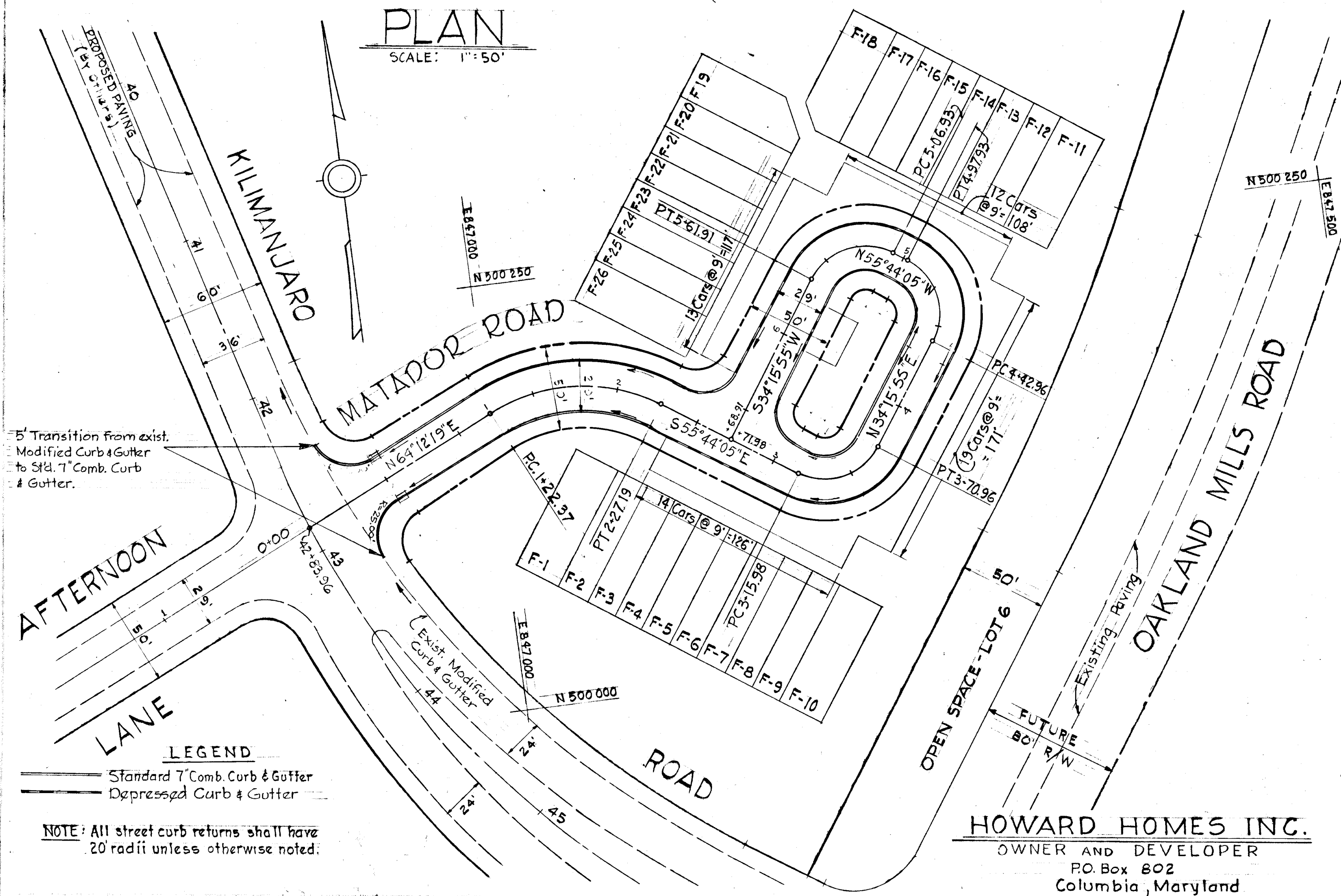
REV	DATE	No	DESCRIPTION
			COLUMBIA ELECTION DISTRICT NO. 6 HOWARD COUNTY, MARYLAND VILLAGE OF OAKLAND MILLS SECTION 2 AREA 4 RESUBDIVISION OF PARCEL "F" ROAD GRADE INDIAN CAMP ROAD

Scale: As Shown Date: May 7, 1970 Dwg. No. 1 of 4



89

F-70-79

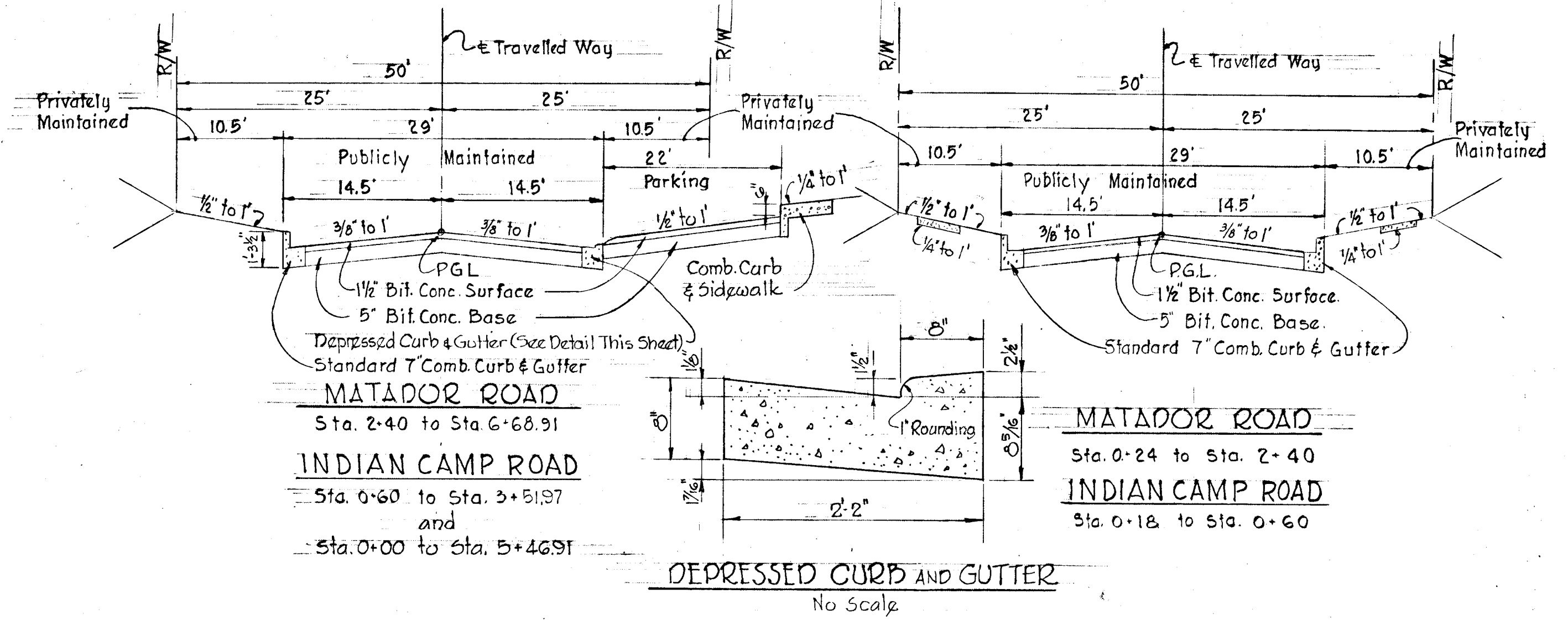


ROAD 'A' CURVE DATA

PC	1-22.37
PT	2-27.19
Δ	60°03'36"
R	100.00
Arc	104.82
T	57.81
Ch.	100.09
Ch. Brq	S85°45'53"E
PC	3-15.98
PT	3-70.96
Δ	90°00'00"
R	35.00
Arc	54.98
T	35.00
Ch.	49.50
Ch. Brq	N79°15'55"E
PC	4-42.96
PT	4-97.93
Δ	90°00'00"
R	35.00
Arc	54.98
T	35.00
Ch.	49.50
Ch. Brq	N10°44'05"W
PC	5-06.93
PT	5-61.91
Δ	90°00'00"
R	35.00
Arc	54.98
T	35.00
Ch.	49.50
Ch. Brq	S79°15'55"W

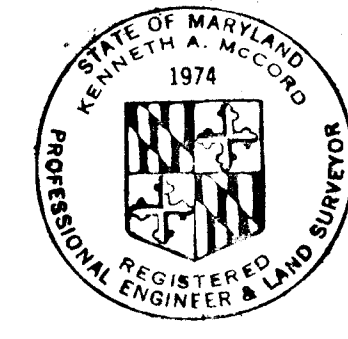
NOTES

- Std 7" Comb. curb and gutter shall be in accordance with County Standard D-40, Page 95
- Paving (6%) shall be in accordance with County Standard D-11, Page 66
- Transition from Std 7" Comb. curb and gutter to depressed curb and gutter shall be in accordance with detail shown on Dwg. 1 of 4.



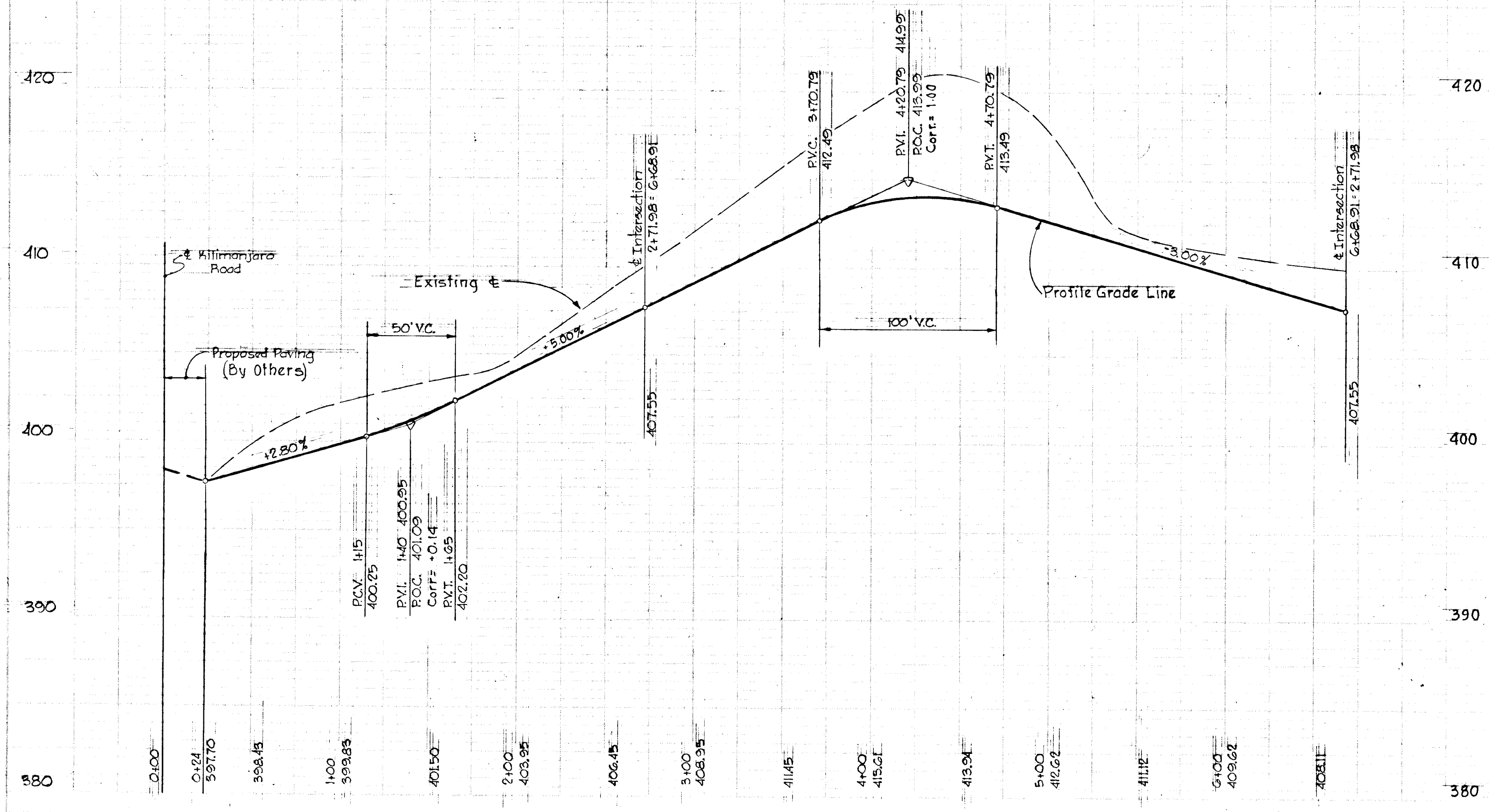
Kenneth A. McCord
KENNETH A. MCCORD
Registered Engineer No. 1974

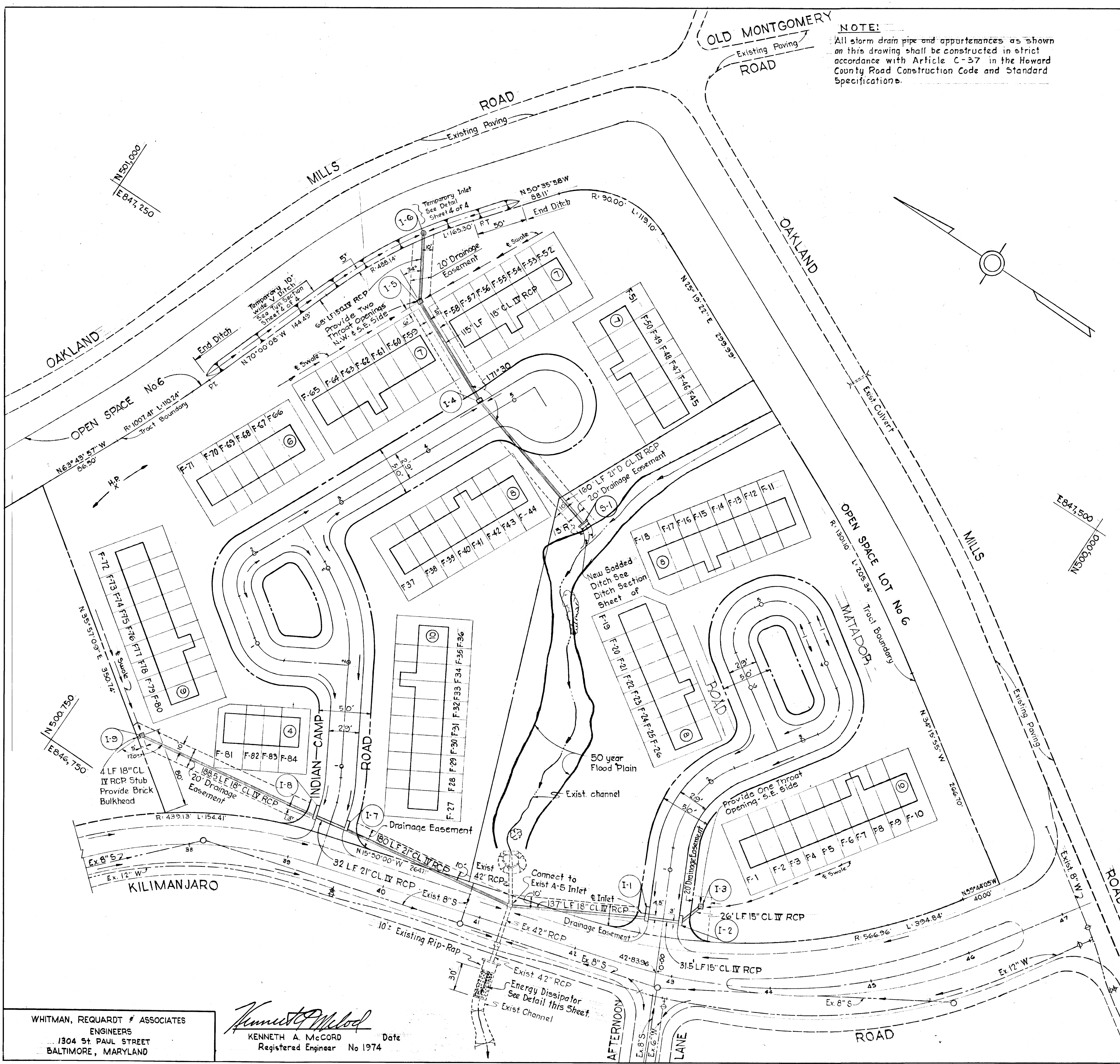
WHITMAN, REARDT & ASSOCIATES
ENGINEERS
1304 ST. PAUL STREET
BALTIMORE, MARYLAND



DEPARTMENT OF PUBLIC WORKS
Brawley H. Mahland 6/17/70
CHIEF BUREAU OF HIGHWAYS
OFFICE OF PLANNING AND ZONING
J.H. Clawson 6-15-70
CHIEF ENGINEER, DIVISION OF LAND DEVELOPMENT

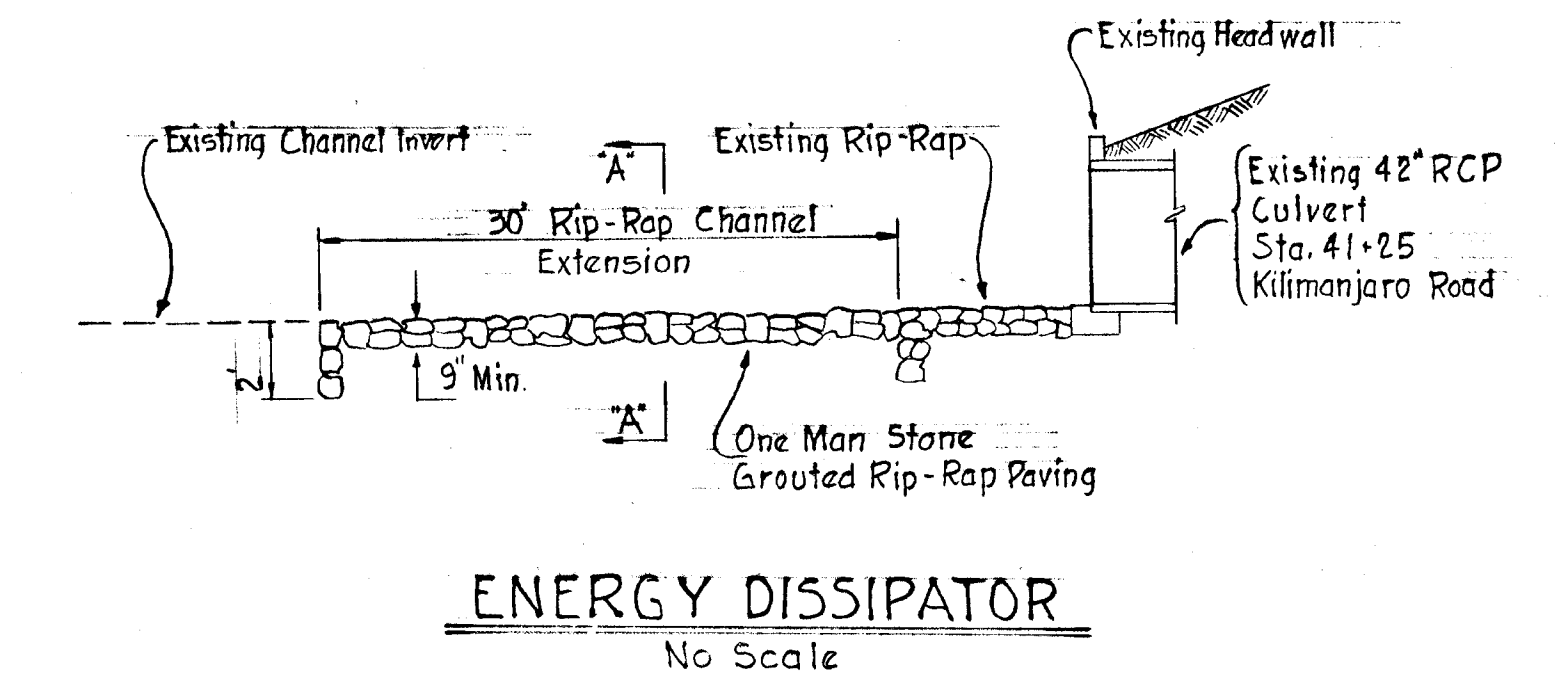
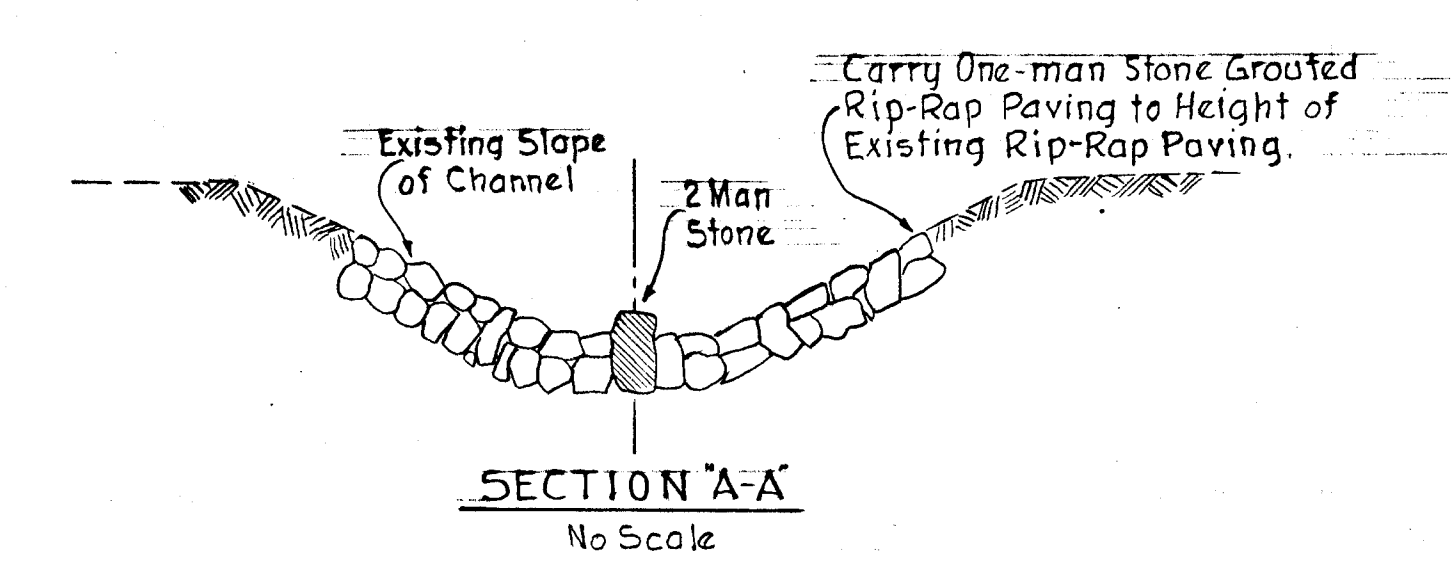
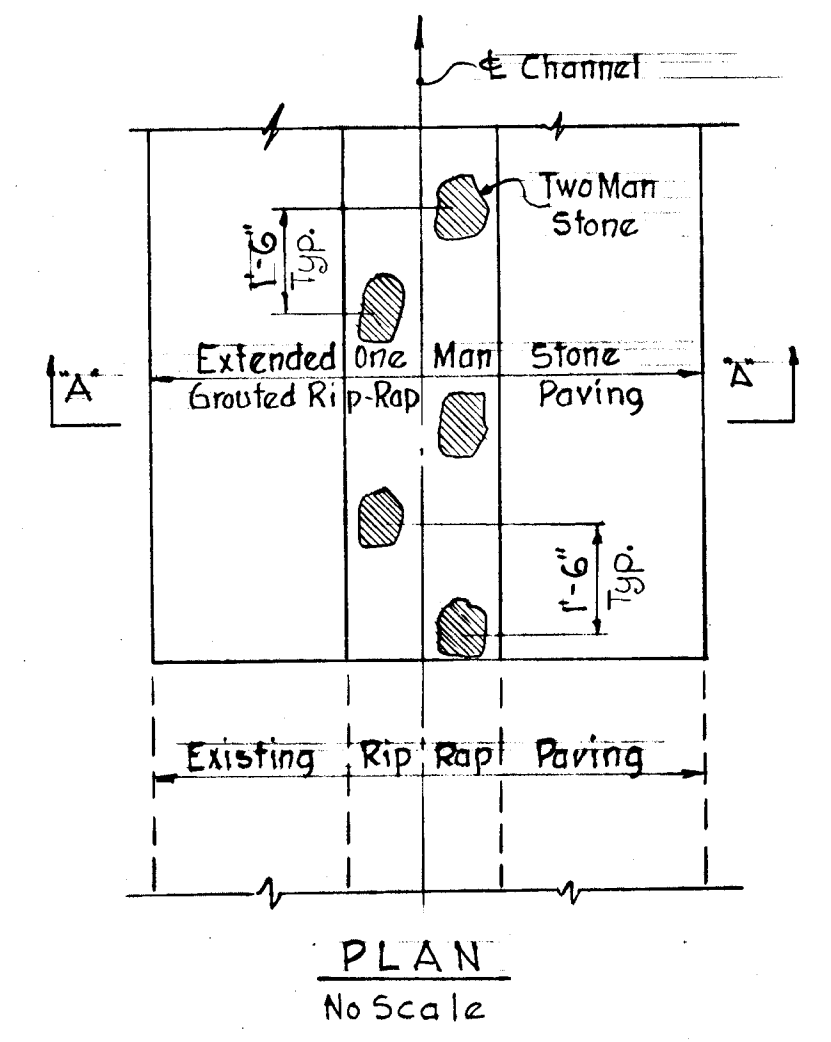
REV. DATE	No	DESCRIPTION
		COLUMBIA ELECTION DISTRICT NO. 6 HOWARD COUNTY, MARYLAND
		VILLAGE OF OAKLAND MILLS SECTION 2 AREA 4
		RESUBDIVISION OF PARCEL "F"
		ROAD GRADE MATADOR ROAD
Scale As Shown	Date May 7, 1970	Dwg. No 2 of 4





NOTE:
 All storm drain pipe and appurtenances as shown on this drawing shall be constructed in strict accordance with Article C-37 in the Howard County Road Construction Code and Standard Specifications.

STORM DRAIN STRUCTURE SCHEDULE					
No.	Type	Top Elev.	Inw Elev.	Location	Howard Co. Std Details
I-1	Std A-15 Inlet width: 2'-6"	398.78	394.06	± Inlet 15.75' left of ± Sta 0+57	Dwg. 64-A, page 119-A
I-2	Std A-10 Inlet width: 2'-6"	398.71	394.54	± Inlet 15.75' right of ± Sta 0+54.50	Dwg. 64-A, page 119-A
I-3	Special "K" Inlet, see detail	398.90	394.78	± Inlet 35.00' right of ± Sta 0+71	
I-4	Std A-5 Inlet width: 2'-6"	409.60	401.80	± Inlet 15.75' left of ± Sta 4+71.41	Dwg. 64-A, page 119-A
I-5	Special "K" Inlet, see detail	406.50	402.91	See Plan and Profile	
I-6	Special Yard Inlet, see detail	410.70	407.16	See Plan and Profile	
S-1	Std "C" Endwall	403.60	401.10	See Plan and Profile	Dwg. D-52, page 107
I-7	Std A-10 Inlet width: 2'-6"	399.45	394.63	± Inlet 15.75' right of ± Sta 0+48	Dwg. 64-A, page 119-A
I-8	Std A-15 Inlet width: 2'-6"	399.58	395.03	± Inlet 15.75' left of ± Sta 0+50	Dwg. 64-A, page 119-A
I-9	Special "K" Inlet, see detail sheet 4	404.20	399.96	See Plan and Profile	



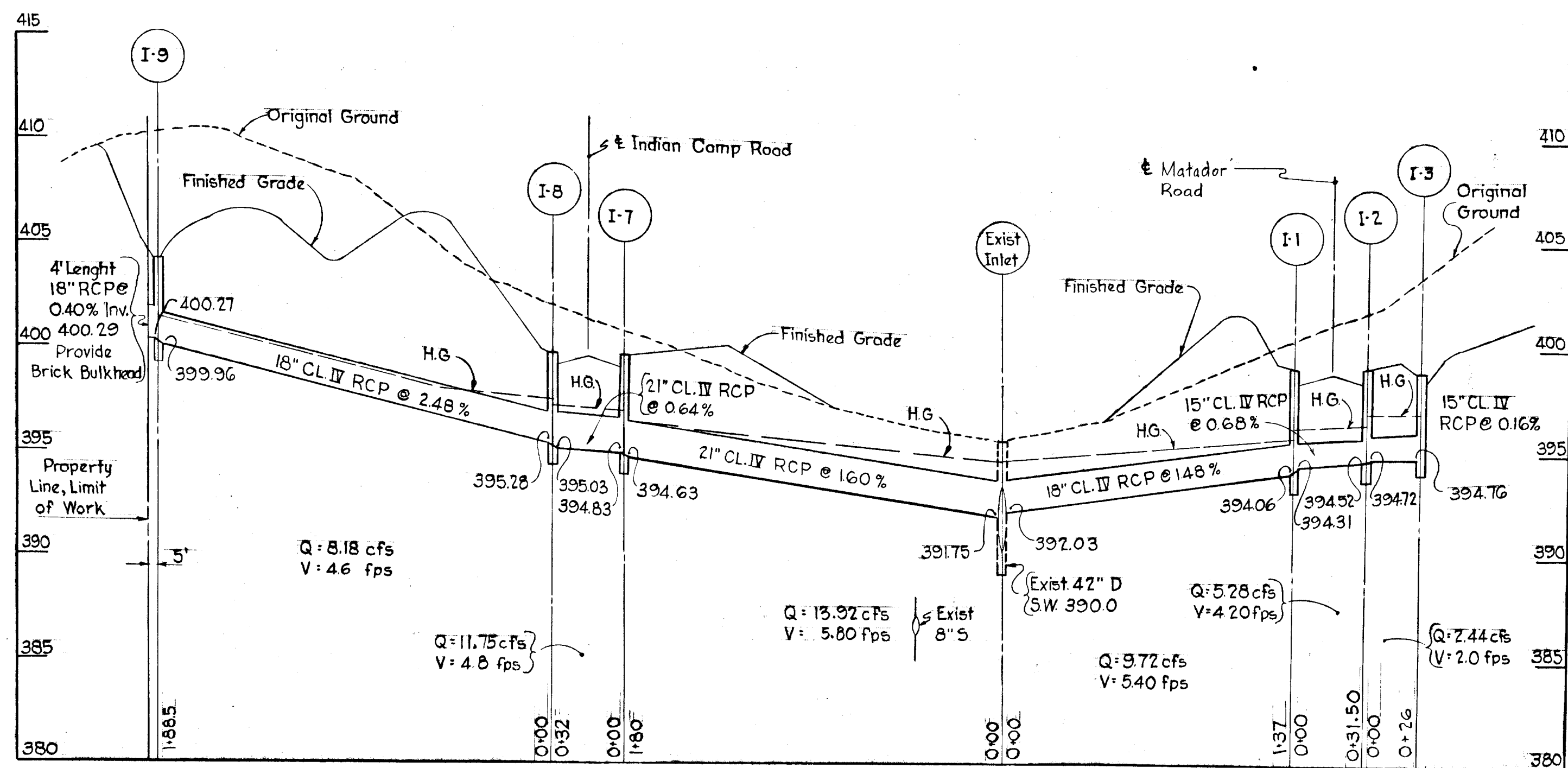
HOWARD HOMES INC.
 OWNERS AND DEVELOPERS
 P.O. BOX 802
 Columbia, Maryland

DEPARTMENT OF PUBLIC WORKS
Stanley M. Nebend 6/17/70
 CHIEF BUREAU OF HIGHWAYS DATE
 OFFICE OF PLANNING AND ZONING
J. H. Clawson 6-15-70
 CHIEF ENGINEER, DIVISION OF LAND DEVELOPMENT DATE

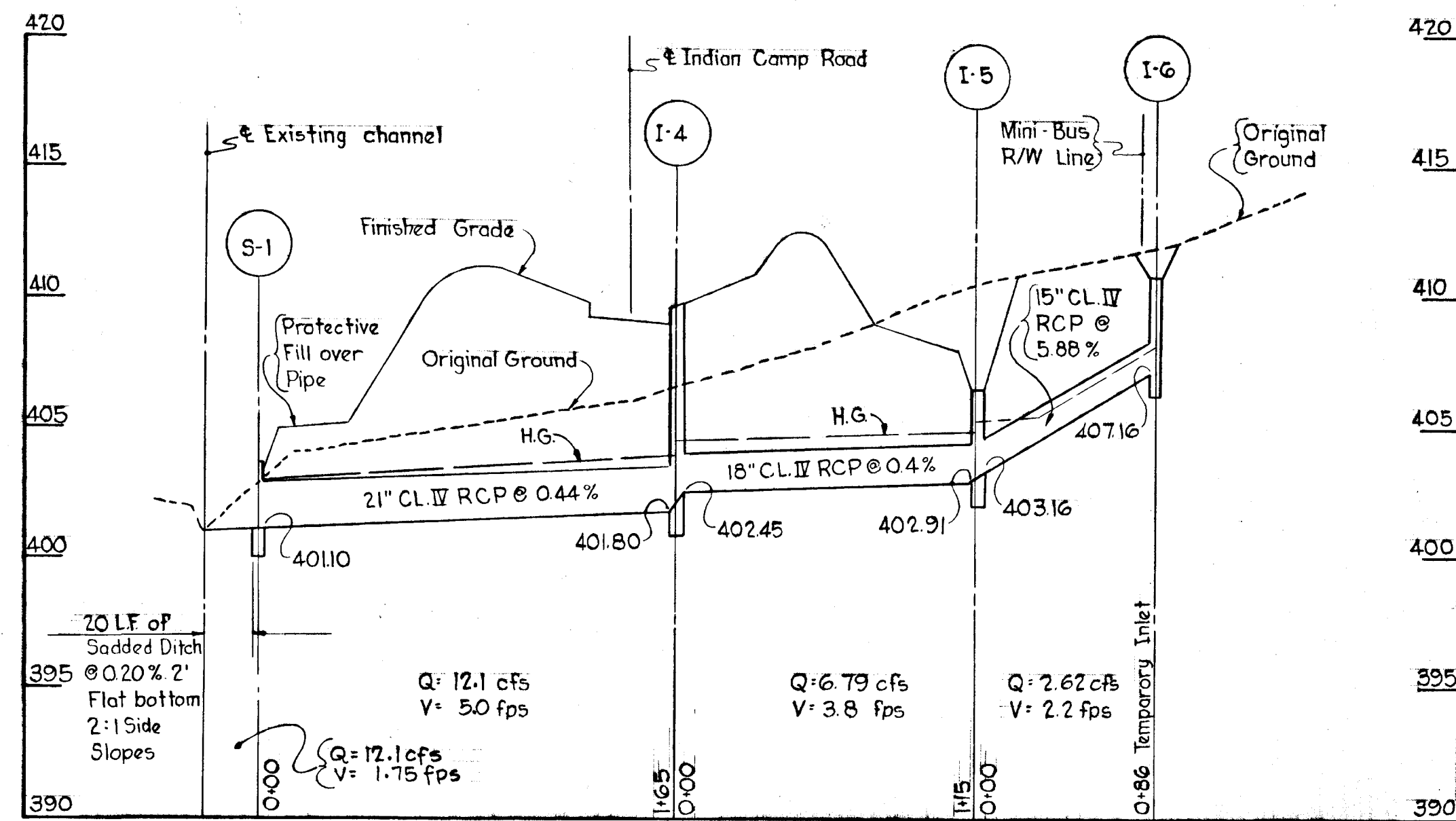
Rev. Date	No.	Description
		COLUMBIA ELECTION DISTRICT NO. 6 HOWARD COUNTY, MARYLAND
		VILLAGE OF OAKLAND MILLS SECTION 2 AREA 4
		RESUBDIVISION OF PARCEL "F"
		STORM DRAIN INDIAN CAMP ROAD AND MATADOR ROAD
Scale: 1" = 50'	Date: May 7, 1970	Dwg. No. 3 of 4

WHITMAN, REQUARDT & ASSOCIATES
 ENGINEERS
 1304 ST. PAUL STREET
 BALTIMORE, MARYLAND

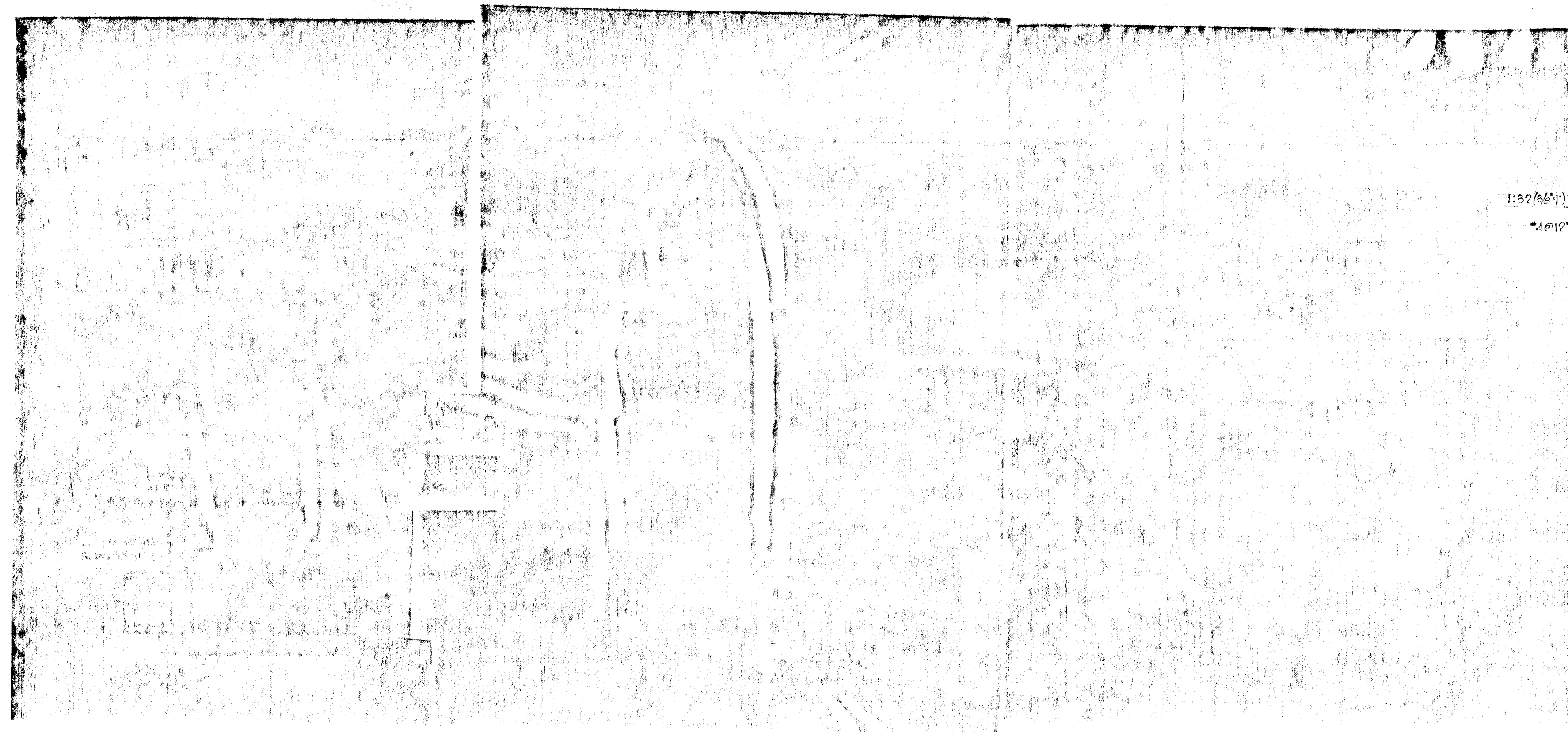
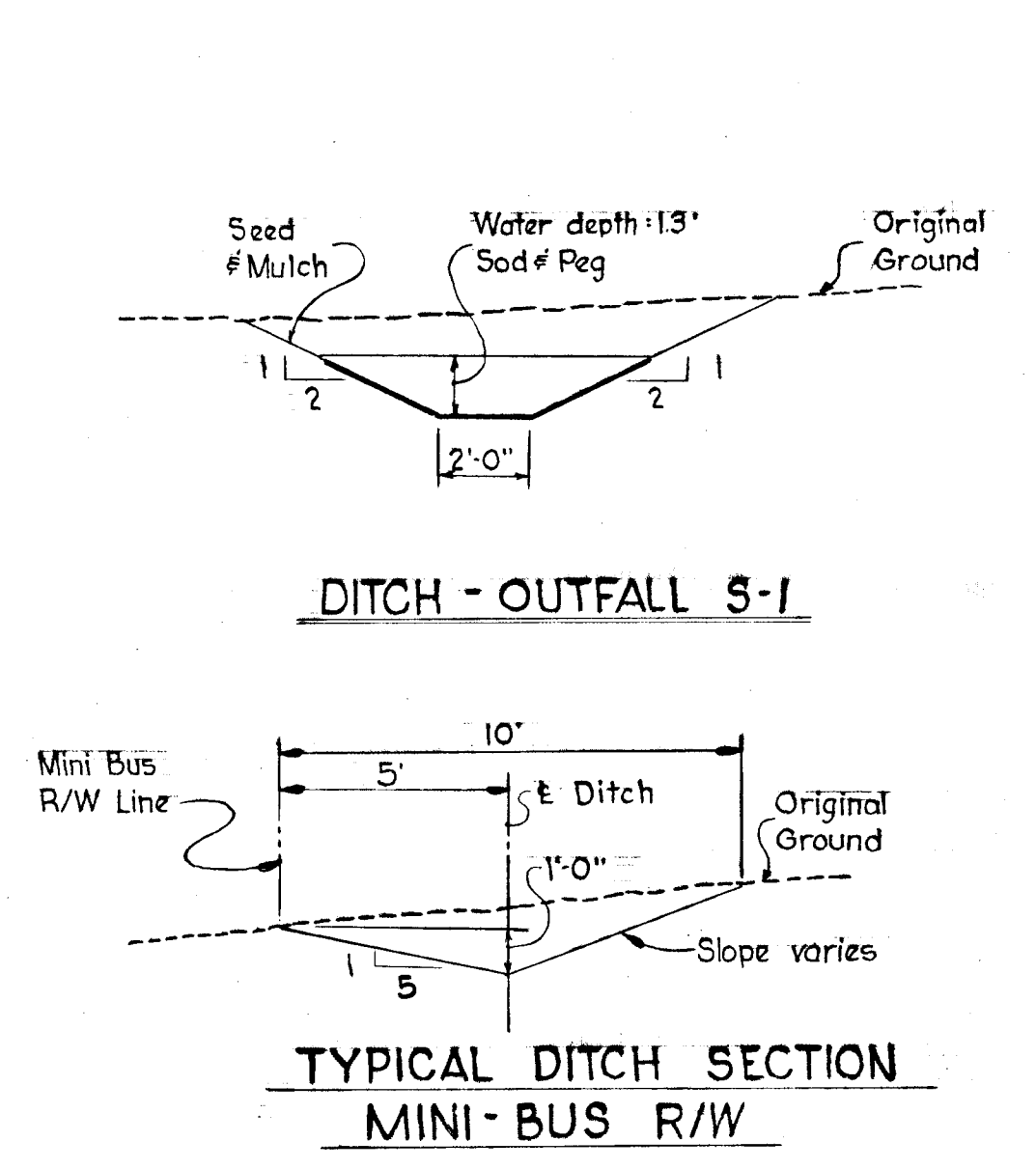
Kenneth A. McCord
 KENNETH A. MCCORD
 Registered Engineer No. 1974



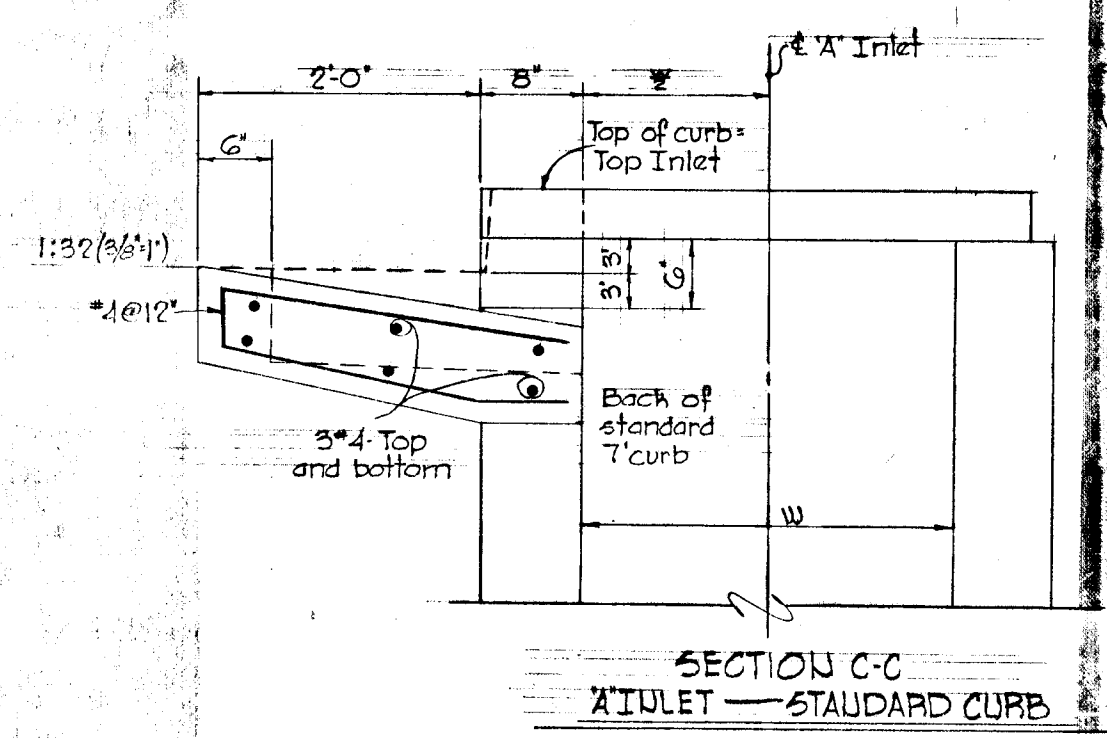
PROFILE
Scale: Hor. 1" = 50'
Ver. 1" = 5'



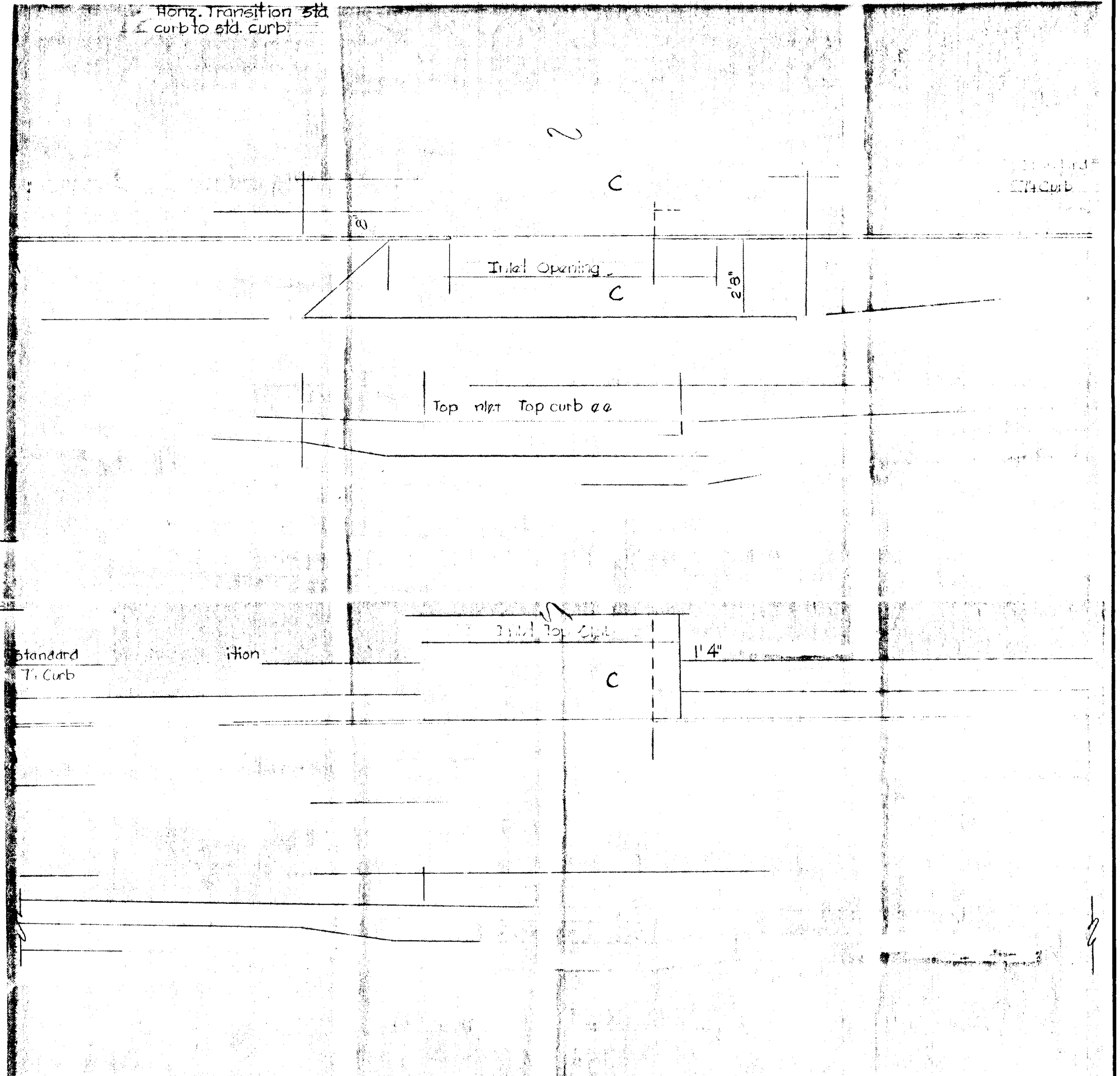
PROFILE
Scale: Hor. 1" = 50'
Ver. 1" = 5'



SECTION "A-A" STRAP DETAIL
SPECIAL "K" INLET



DETAIL INLET I-6
No Scale



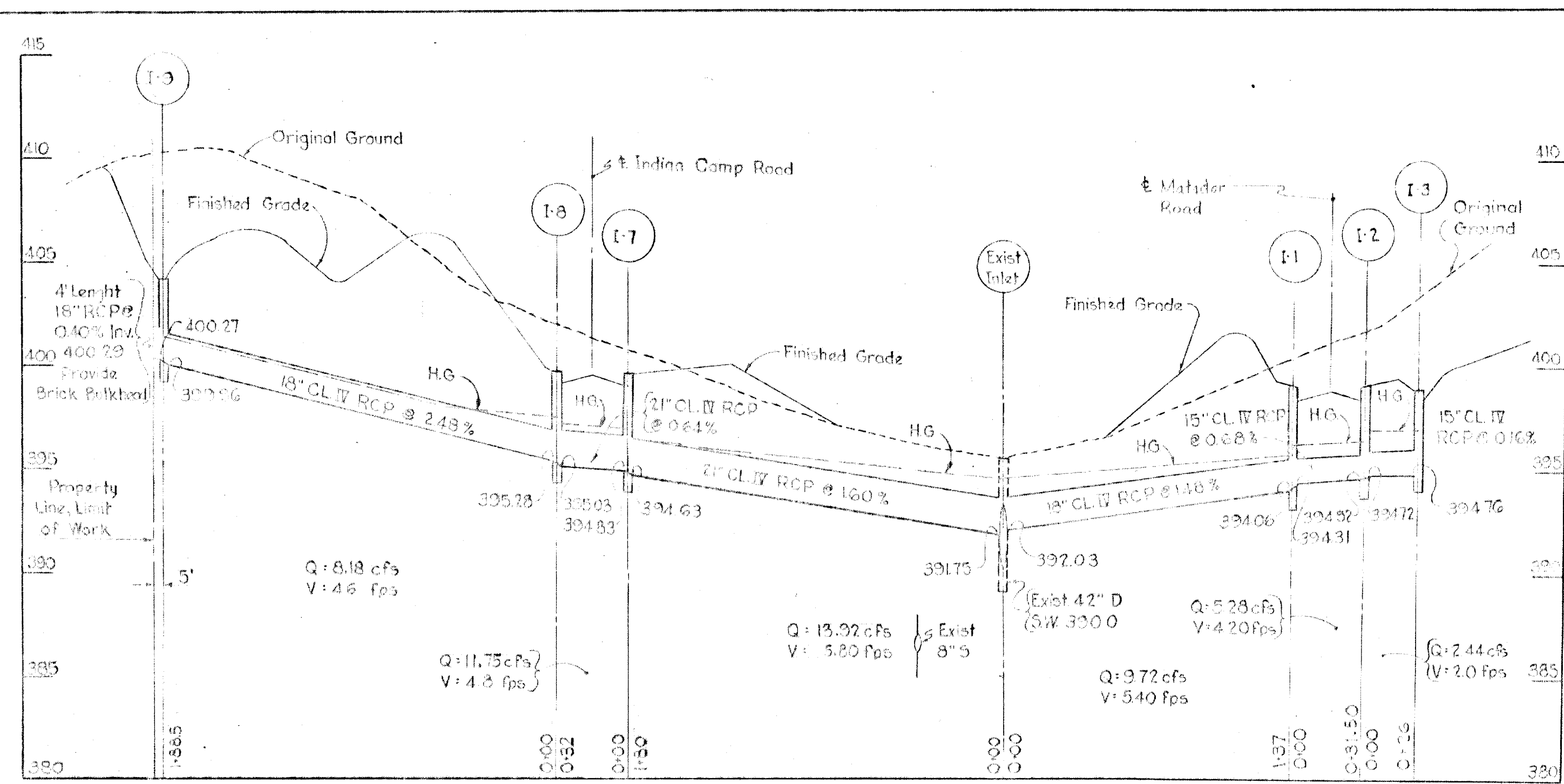
WHITMAN, REQUARDT & ASSOCIATES
ENGINEERS
1304 St PAUL STREET
BALTIMORE, MARYLAND

Kenneth A. McCord
KENNETH A. McCORD
Registered Engineer No. 1974

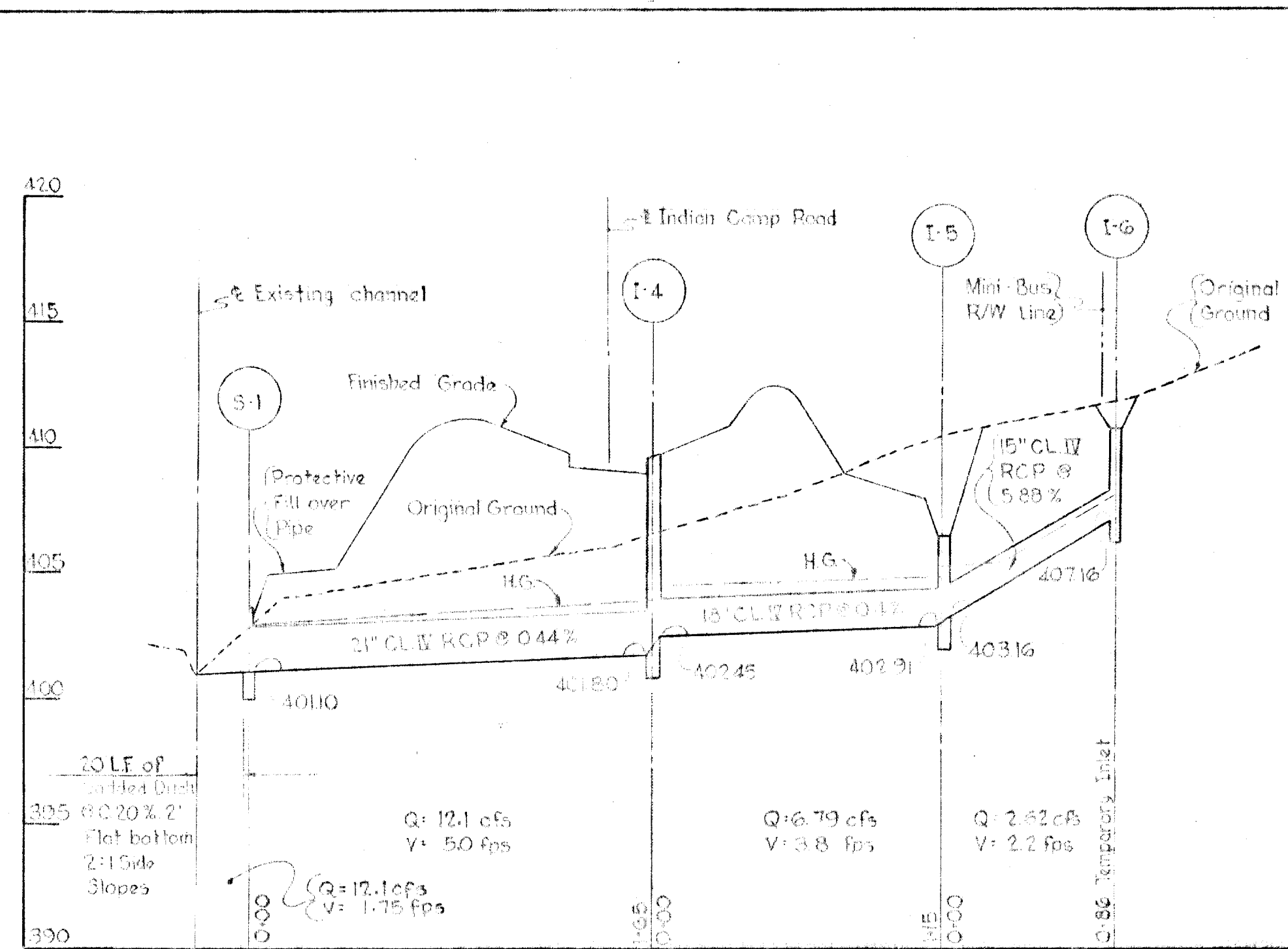
HOWARD HOMES INC.
OWNER AND DEVELOPERS
P.O. BOX 802
Columbia, Maryland

DEPARTMENT OF PUBLIC WORKS
Granville M. Medland 6/17/70
CHIEF, BUREAU OF HIGHWAYS
J. H. Clawson 6-15-70
CHIEF ENGINEER, DIVISION OF LAND DEVELOPMENT

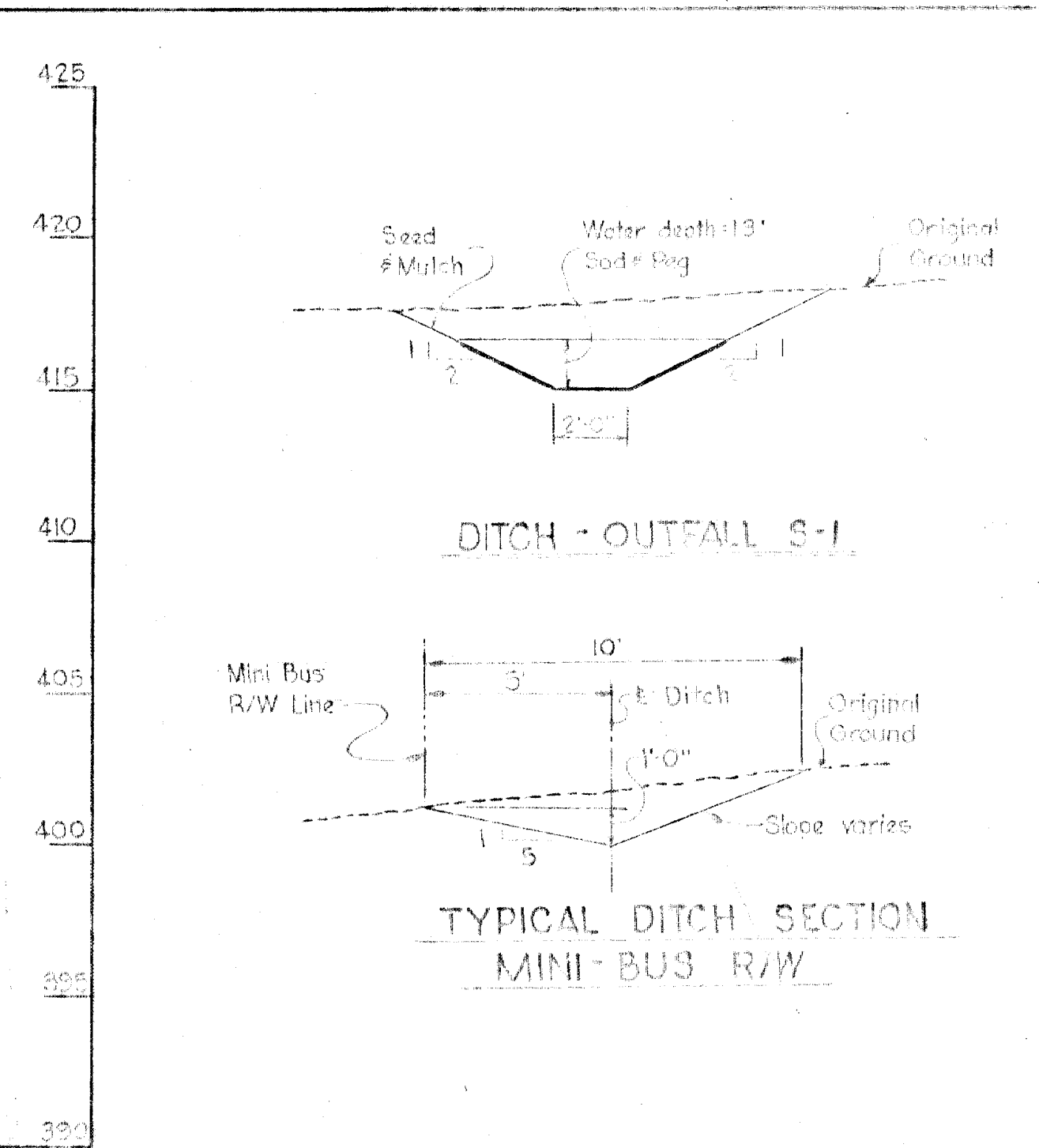
Rev. Date	No.	Description
		COLUMBIA ELECTION DISTRICT NO. 6 HOWARD COUNTY, MARYLAND
		VILLAGE OF OAKLAND MILLS SECTION 2 AREA 4 RESUBDIVISION OF PARCELS
		STORM DRAIN INDIAN CAMP ROAD AND MATADOR ROAD
Scale: As Shown	Date: May 7, 1970	Dwg. No. 4 of 4



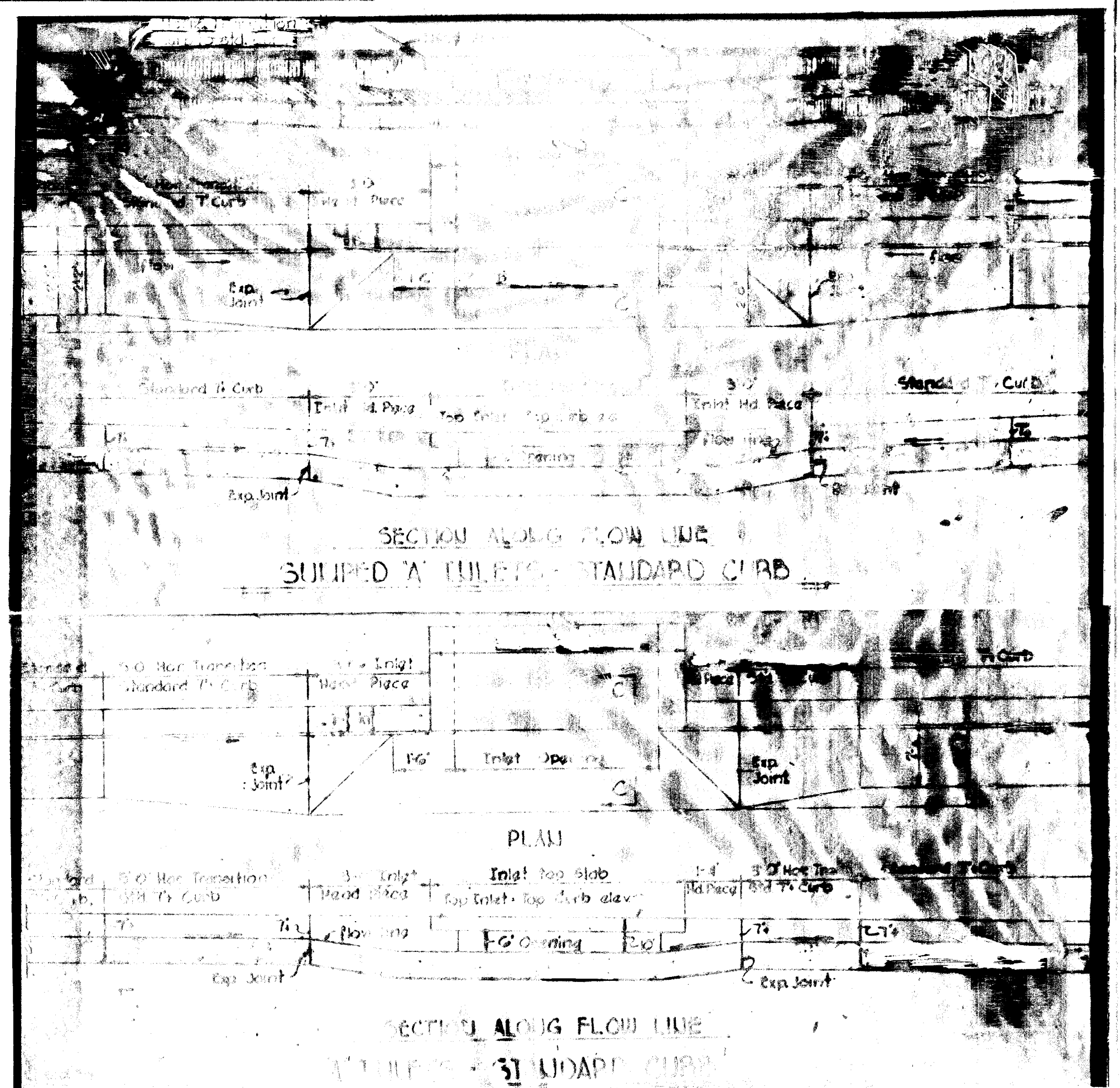
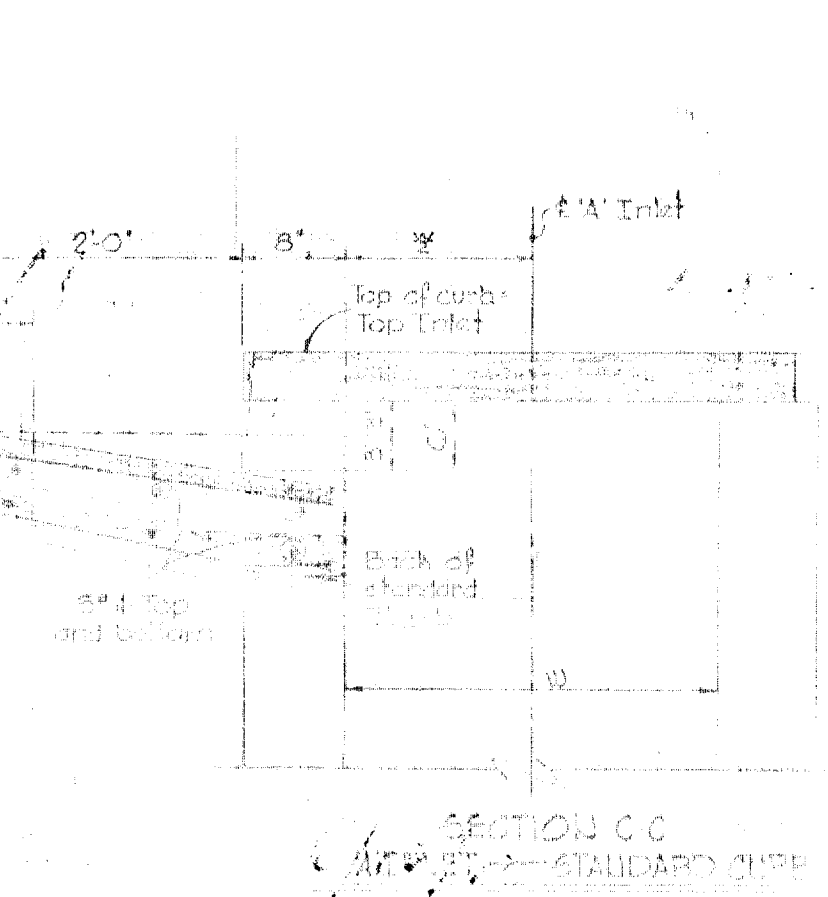
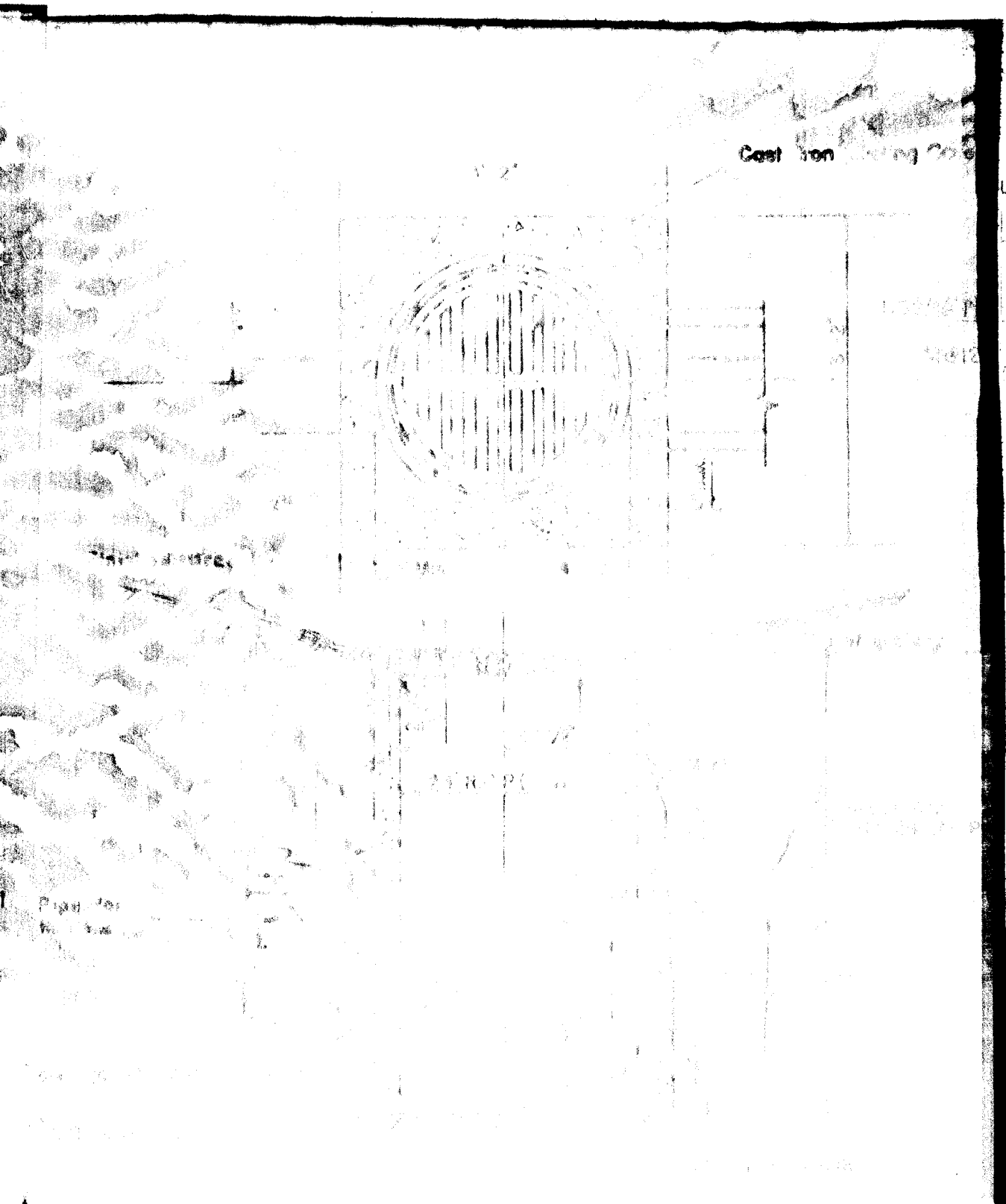
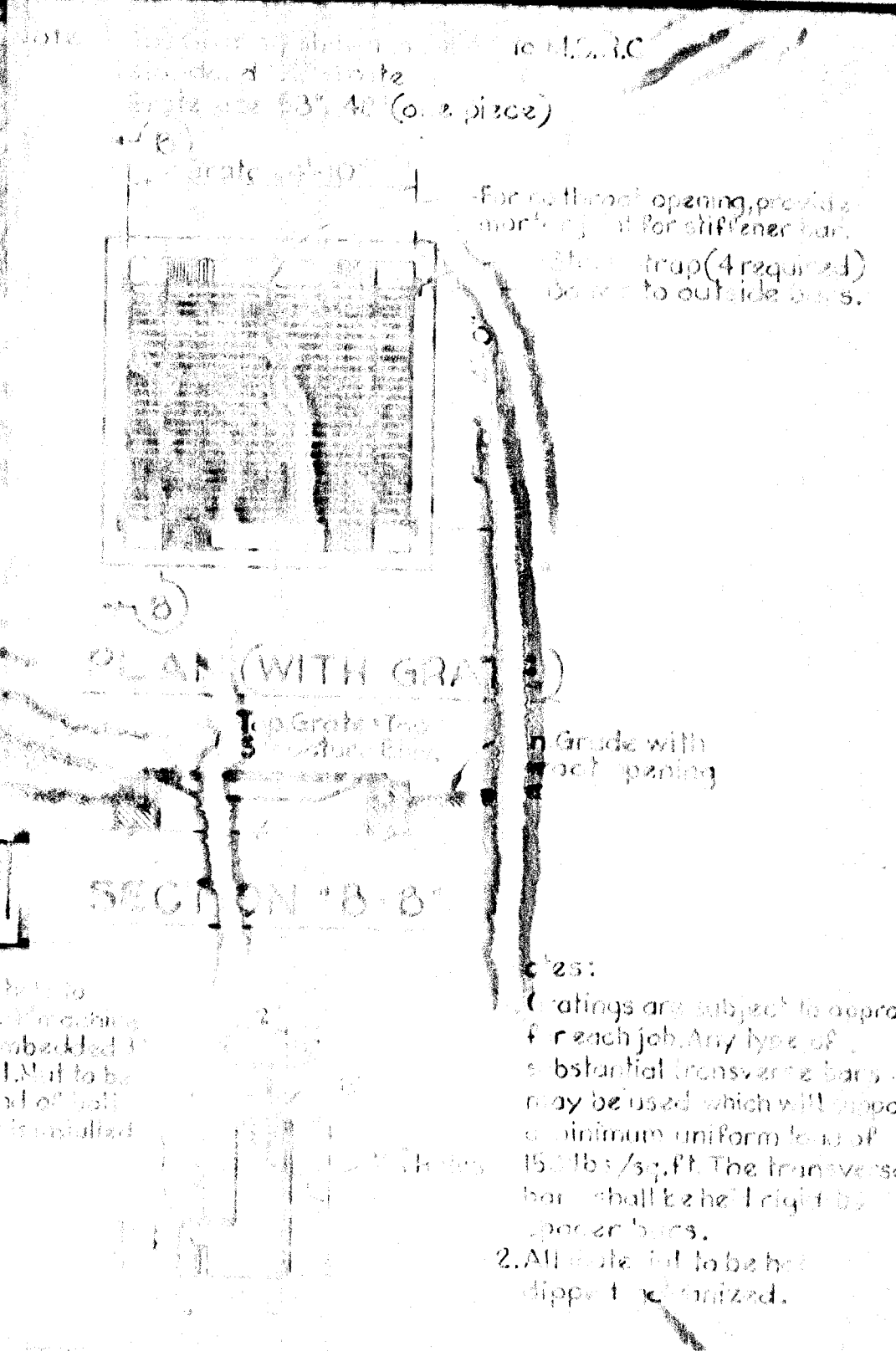
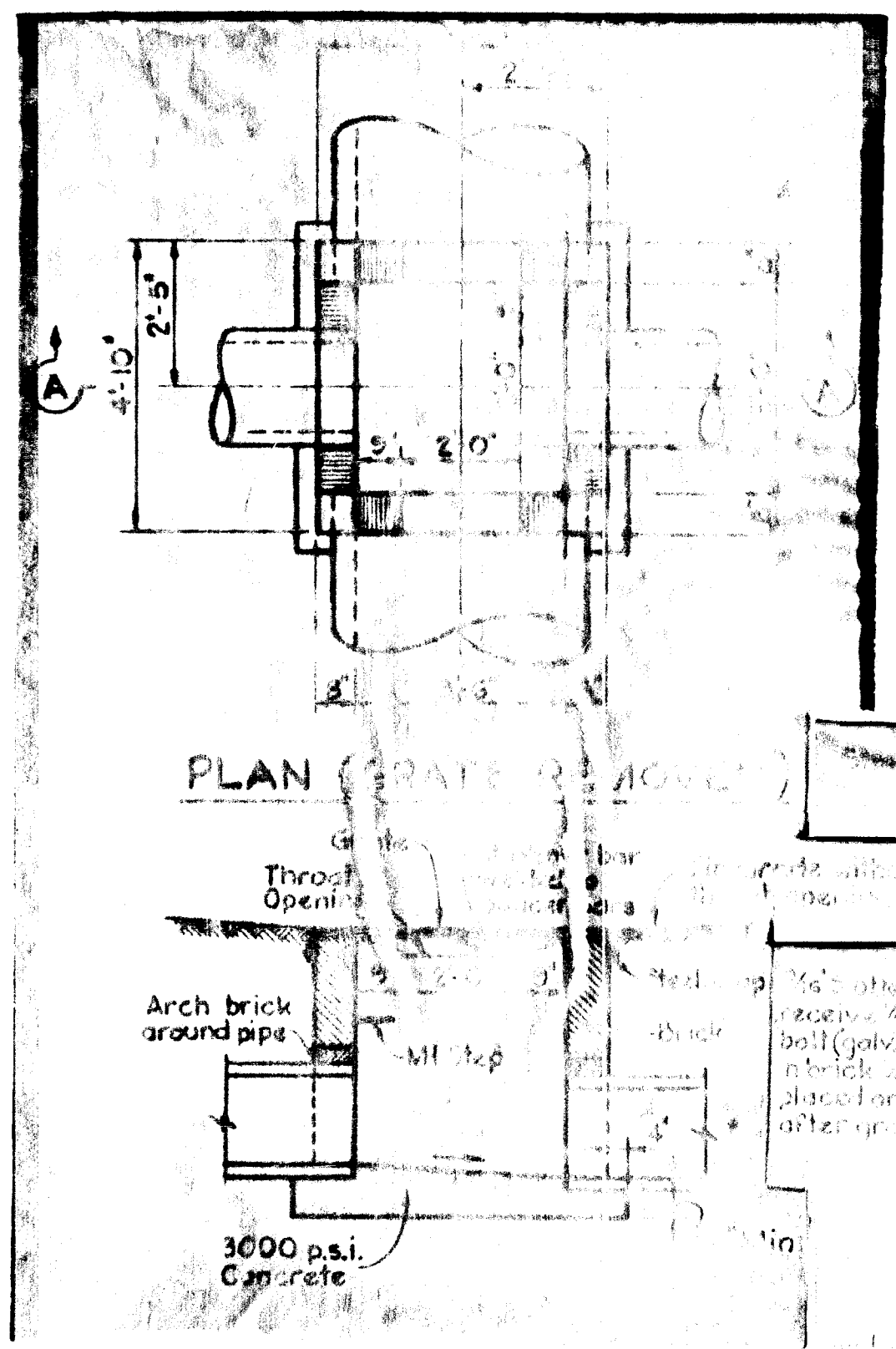
PROFILE
Scale: Hor. 1"=50'
Ver. 1"=5'



PROFILE
Scale: Hor. 1"=50'
Ver. 1"=5'



DITCH - OUTFALL S-1
TYPICAL DITCH SECTION
MINI-BUS R/W



SECTION A-A
STRAP DETAIL
SPECIAL "K" INLET

SECTION A-A ALONG FLOW LINE
EQUIPPED WITH INLETS - STANDARD CURB
SECTION B-B ALONG FLOW LINE
EQUIPPED WITH INLETS - STANDARD CURB

WHITMAN, REOUARDT & ASSOCIATES
ENGINEERS
1304 ST. PAUL STREET
BALTIMORE, MARYLAND

Kenneth A. McCord
KENNETH A. MCCORD
Registered Engineer No. 1974

HOWARD HOMES INC.
OWNER AND DEVELOPER
P.O. BOX 802
Columbia, Maryland

DEPARTMENT OF PUBLIC WORKS
Drayville W. Hedland 6/17/70
CHIEF, BUREAU OF HIGHWAYS
J. J. Clawson 6-15-70
CHIEF ENGINEER, DIVISION OF LAND DEVELOPMENT

Rev.	Date	No.	Description
			COLUMBIA ELECTION DISTRICT NO. 6 HOWARD COUNTY, MARYLAND SECTION 3 AREA RESUBDIVISION OF PARCELS FORM THE AIR INDIAN CAMP ROAD AND MACHOSE ROAD
Scale		Date	Drawn