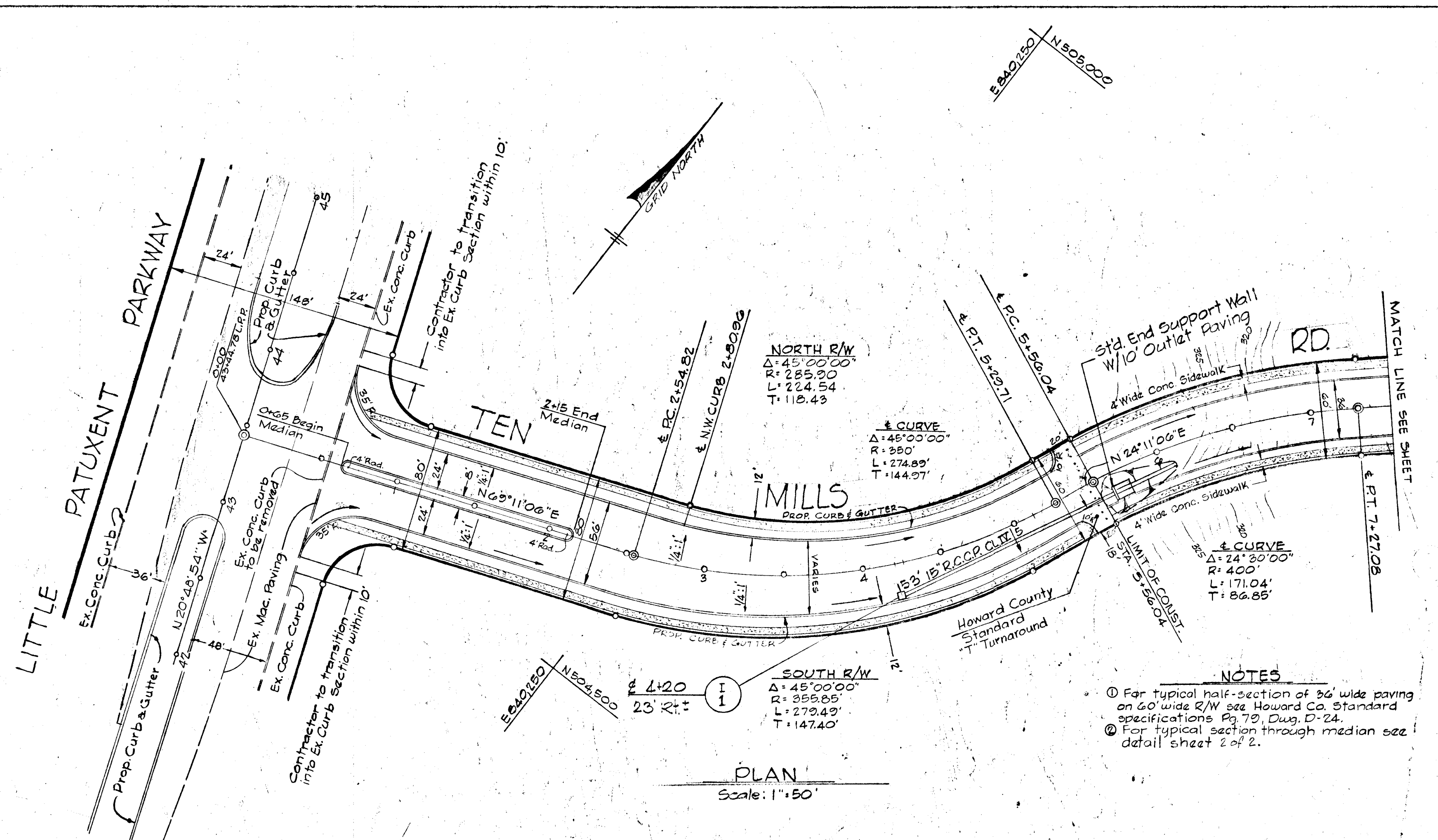


STORM DRAINAGE STRUCTURE SCHEDULE			
NO.	TYPE	PI	PO
1	A-5 064-A	335.59	340.00



- NOTES**
- For typical half-section of 36' wide paving on 60' wide R/W see Howard Co. Standard specifications Pg 79, Dwg. D-24.
  - For typical section through median see detail sheet 2 of 2.

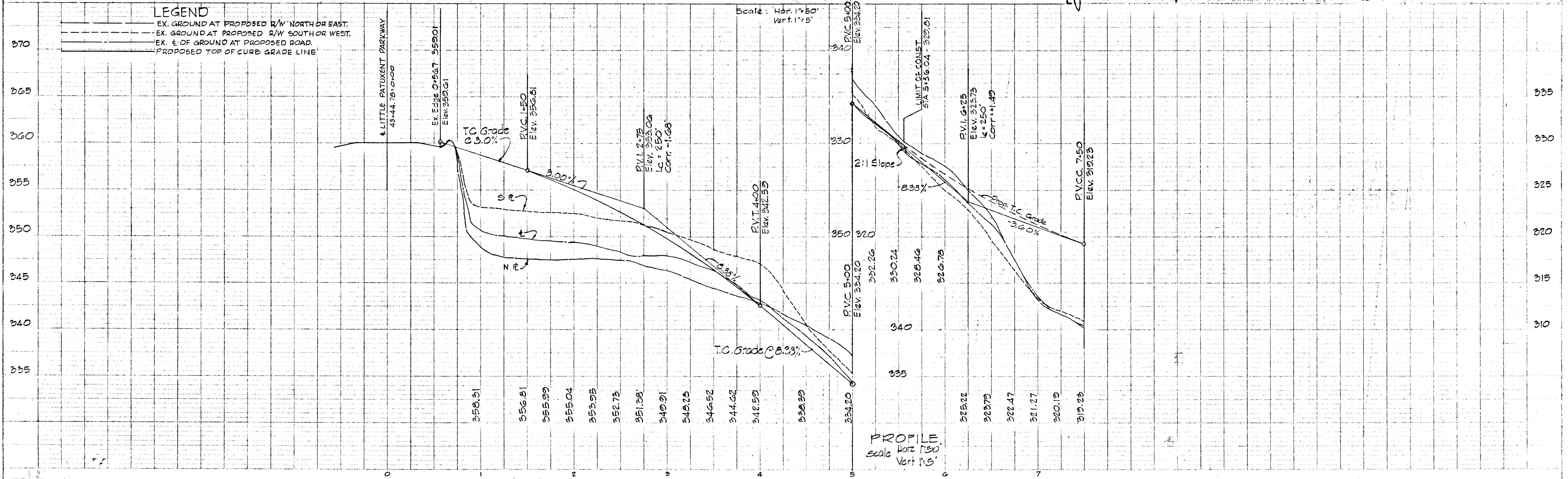
*George Lambros* # 0519  
 GEORGE LAMBROS ENGINEER REG. NO.  
 OAKLAND BLDG. COLUMBIA, MD.  
 DATE 3/16/70



**COLUMBIA**  
 MARYLAND  
 5th ELECTION DISTRICT HOWARD COUNTY MD.  
 HOWARD RESEARCH AND DEVELOPMENT CO. INC.  
 TOWN CENTER SEC. NO. 7 AREA NO. 4  
 TEN MILLS ROAD

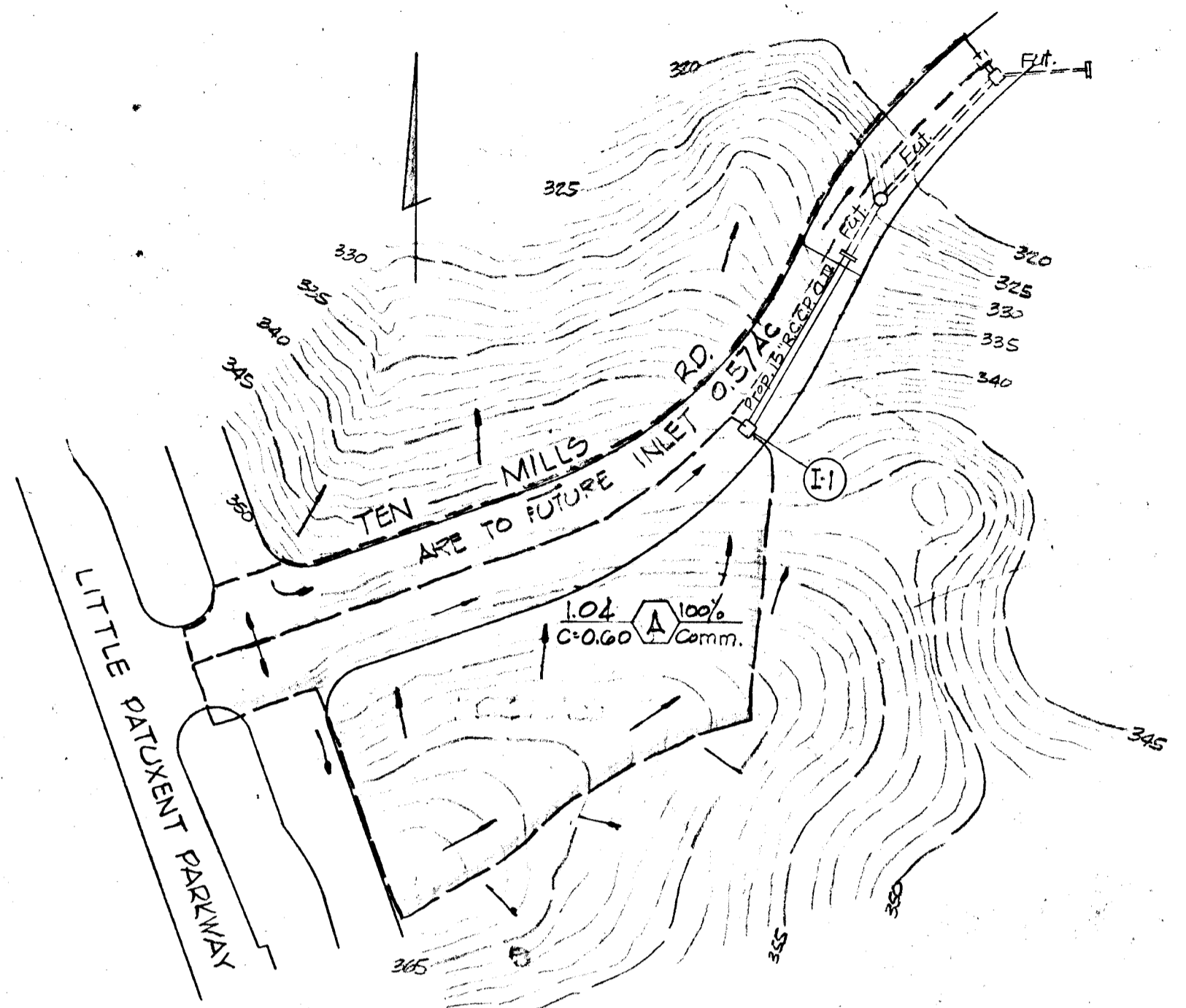
DEPARTMENT OF PUBLIC WORKS  
*Granville St. Millard* 4-30-70  
 OFFICE OF PLANNING AND ZONING  
*J. H. Lawson, Jr.* 4-30-70

TEN MILLS ROAD  
 (Sta. 0+00 to 7+50)  
 AS SHOWN  
 Date March 1970  
 No. 1 of 2

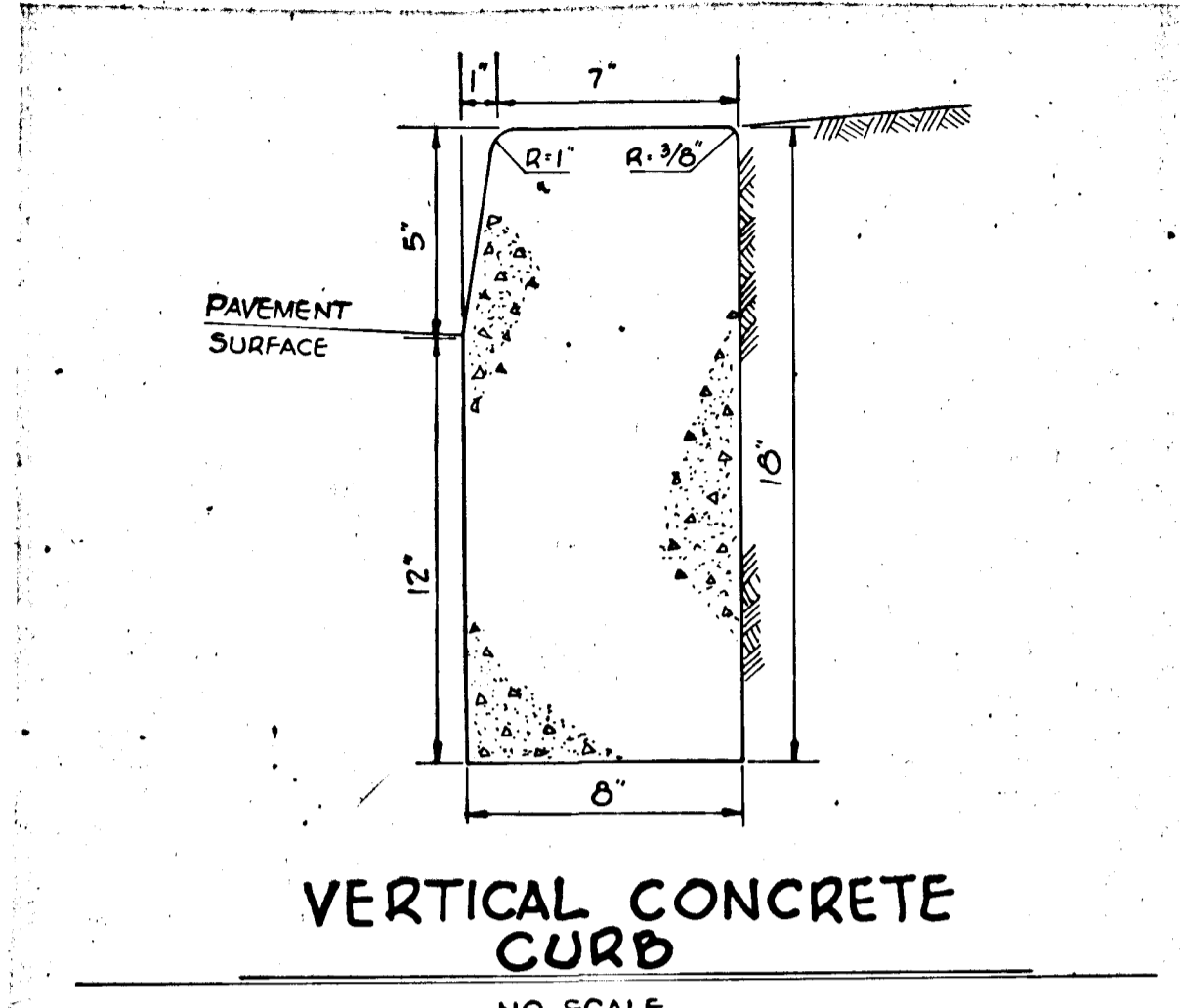


LOCATION		AREA	ACRES		COEFF.		CA	ΣCA	TIME CONC. TIME		ATTEN.		Q <sub>1</sub> C.F.A.	PIPE N <sup>o</sup>			REMARKS
FROM	TO		SUB.	TOTAL	C <sub>1</sub>	C <sub>2</sub>			INLET	DRAIN	TOTAL	1"		C.F.B.	SIZE	SLOPE	
I-1	OUT	A	1.04		0.60	0.62		7.0			6.4	3.08	15	0.48	3.2	153'	

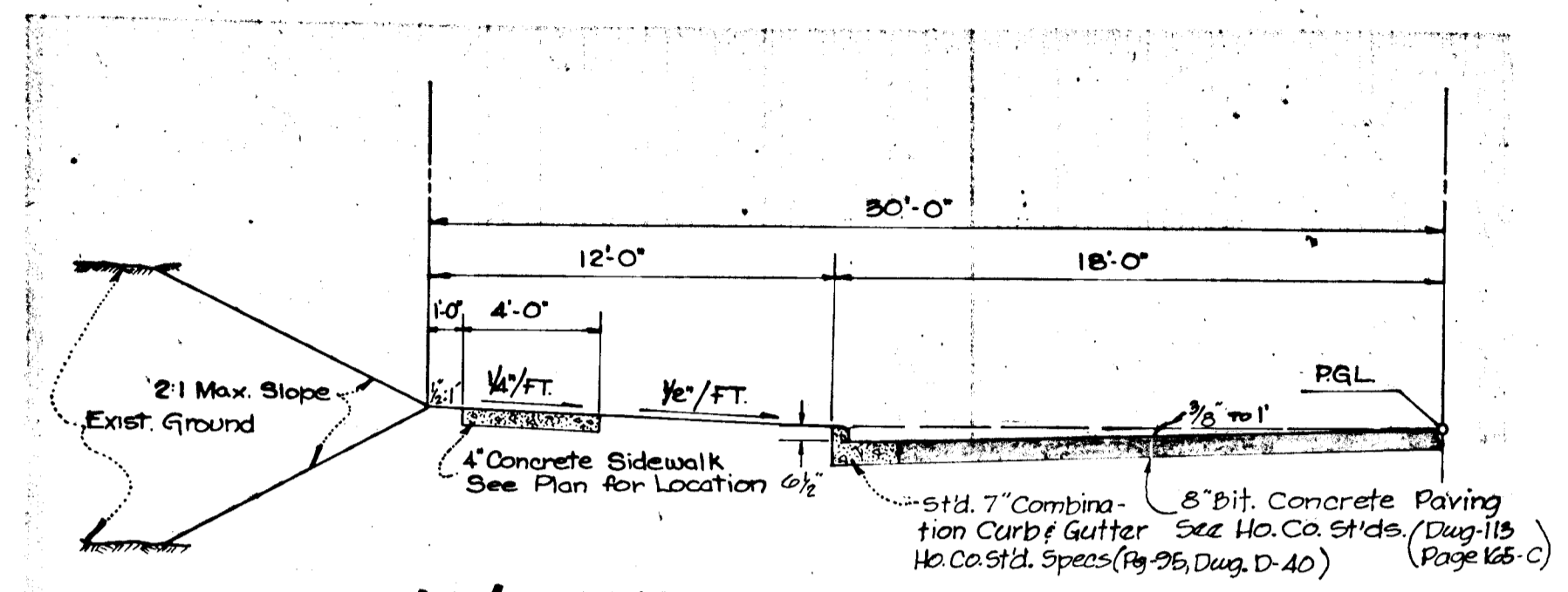
DESIGN DATA



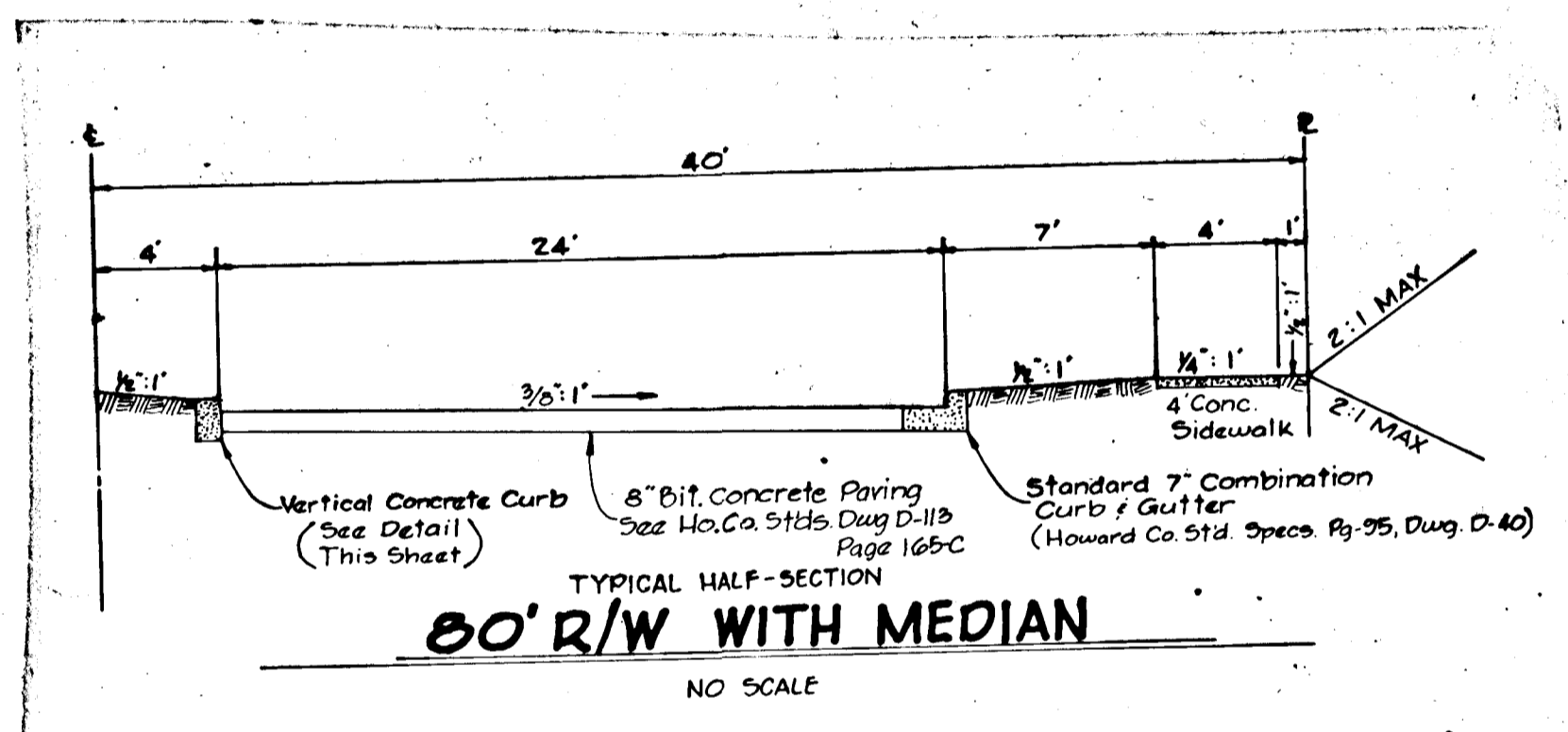
DRAINAGE AREA MAP  
Scale: 1"=100'



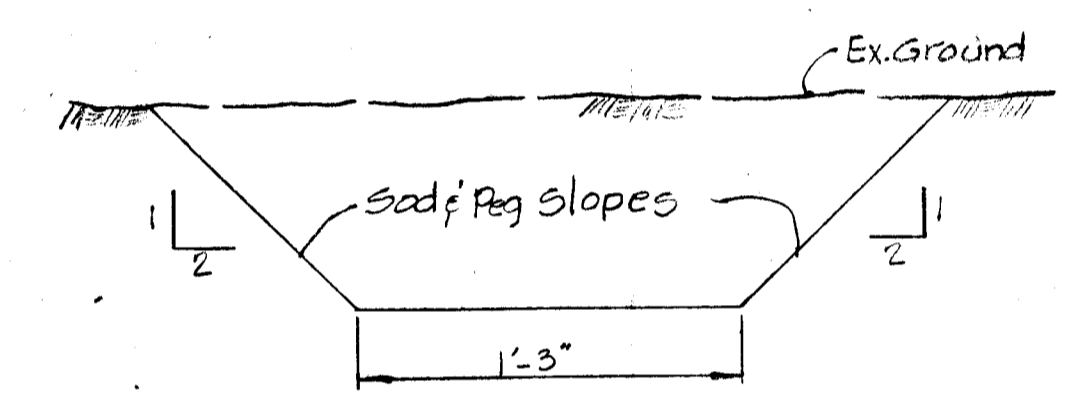
VERTICAL CONCRETE CURB  
NO SCALE



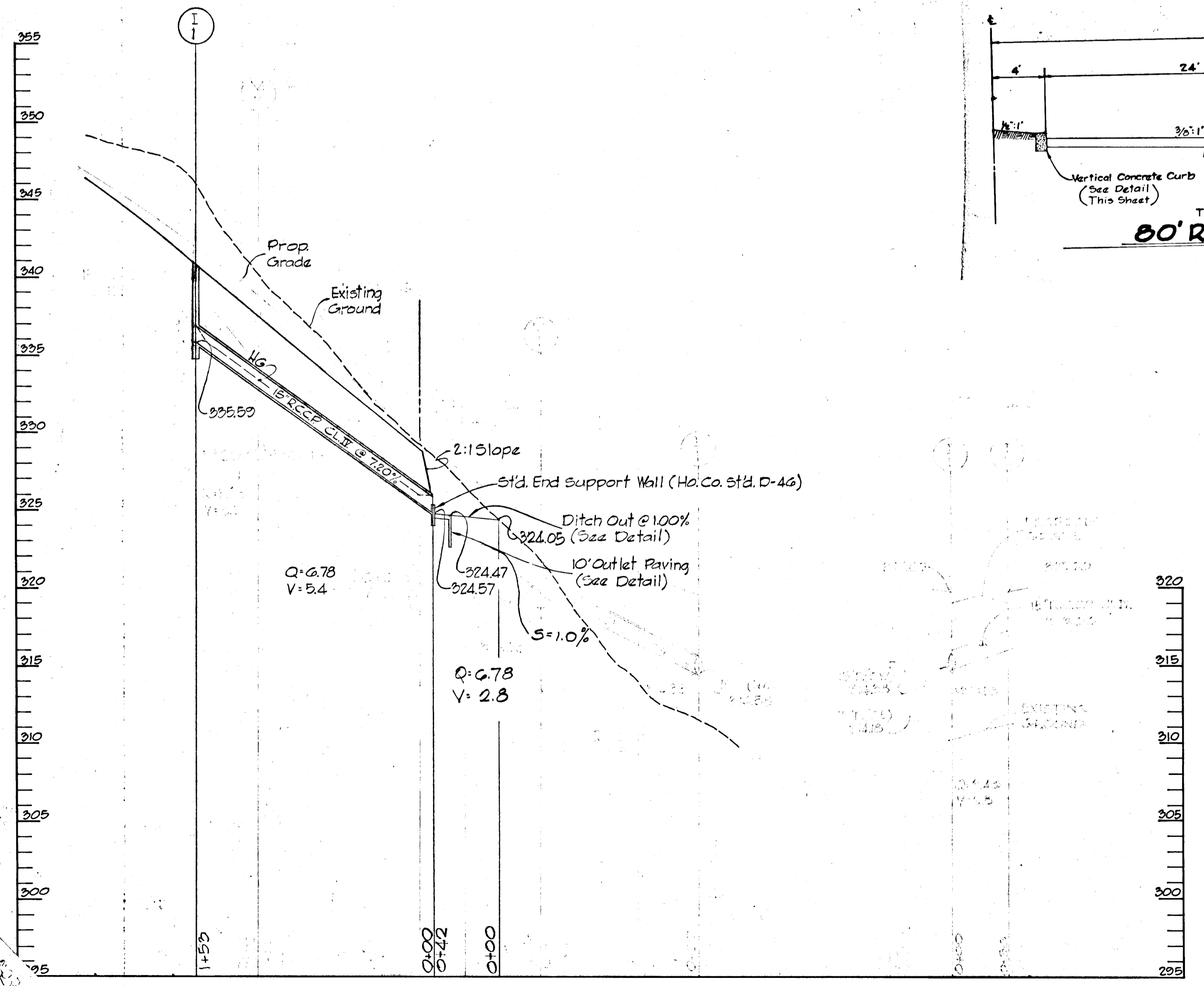
60' R/W TYPICAL HALF-SECTION  
NO SCALE



60' R/W WITH MEDIAN  
NO SCALE

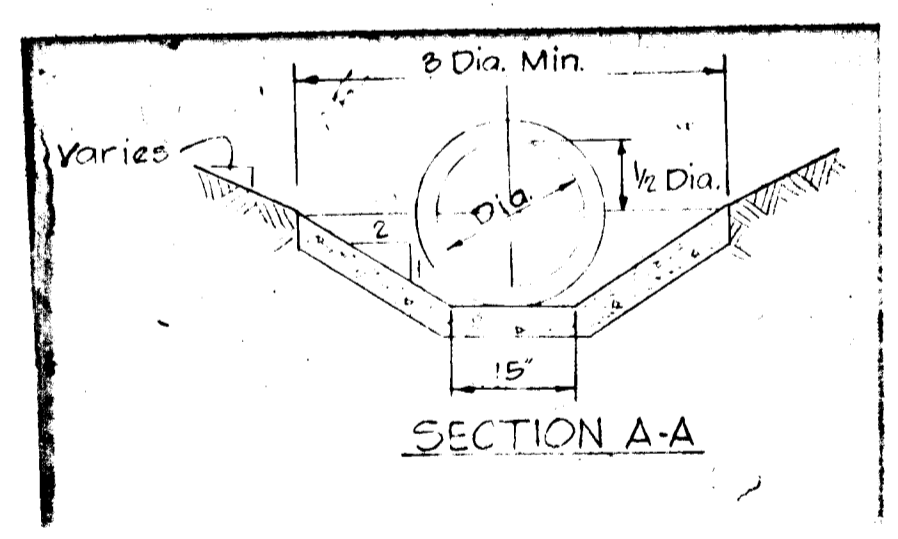


DITCH DETAIL  
NO SCALE

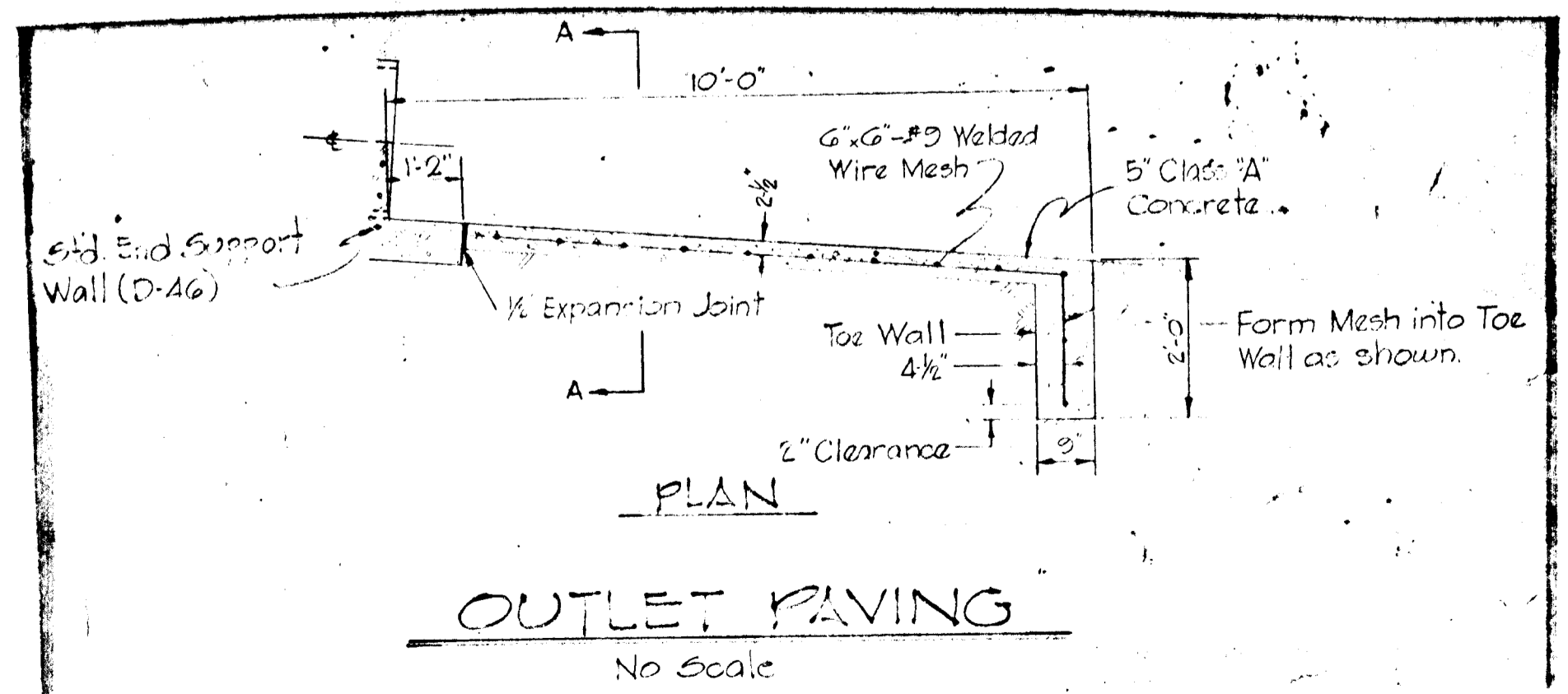


CHANNEL COMPUTATIONS  
 $Q_{Road} = 6.78 \text{ cfs.}$   
 $C = 0.85$   
 $A = 5.05$   
 $V = 2.5$   
 $R = 0.29$   
 $KV = 0.54$   
 $Q = 7.0 \text{ cfs.} > 6.78 \text{ cfs.}$   
 $V = 2.8 \text{ fsec}$   
 $S = 1.0\%$

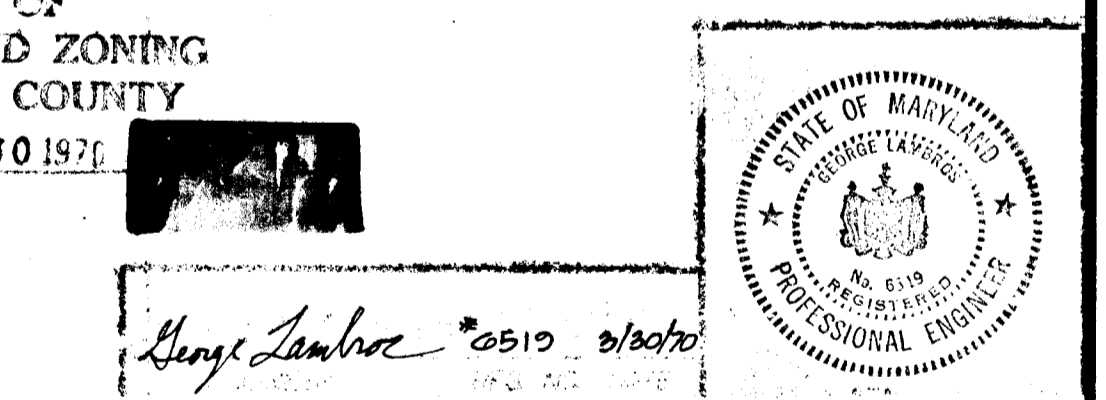
APPROVED  
 DIVISION OF  
 LAND DEVELOPMENT  
 OFFICE OF  
 PLANNING AND ZONING  
 OF HOWARD COUNTY  
 DATE: APR 30 1970



SECTION A-A



OUTLET PAVING  
No Scale



DEPARTMENT OF PUBLIC WORKS  
*Benjamin N. Wickland* 4-30-70  
 CHIEF, BUREAU OF HIGHWAYS  
 OFFICE OF PLANNING AND ZONING  
 CHIEF ENGINEER, DIVISION OF LAND DEVELOPMENT. DATE

Rev Date	Rev No	Revision Description
<b>COLUMBIA</b>		
M A R Y L A N D		
5th ELECTION DISTRICT HOWARD COUNTY MD		
OWNER AND DEVELOPER		
HOWARD RESEARCH AND DEVELOPMENT CORP.		
THE VILLAGE OF CROSS KEYS - BALTIMORE, MARYLAND 21210		
PROJECT AREA		
TOWN CENTER SEC. NO. 7 AREA NO. 4		
TEN MILLS RD. (STA. 0+00 TO 5+56.04)		
PROJECT TITLE		
DRAINAGE AREA MAP		
STORM DRAIN PROFILES, DETAILS		
Des By	T.J.R. III	Scale
Drn By	A.J.J.	Date
Chk By	T.J.R. III	Approved
Dwg No	2022	C.C.F. No
Date	March 1970	