

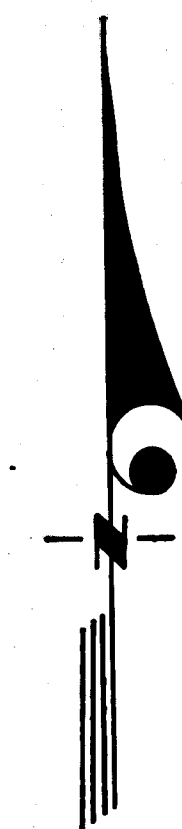
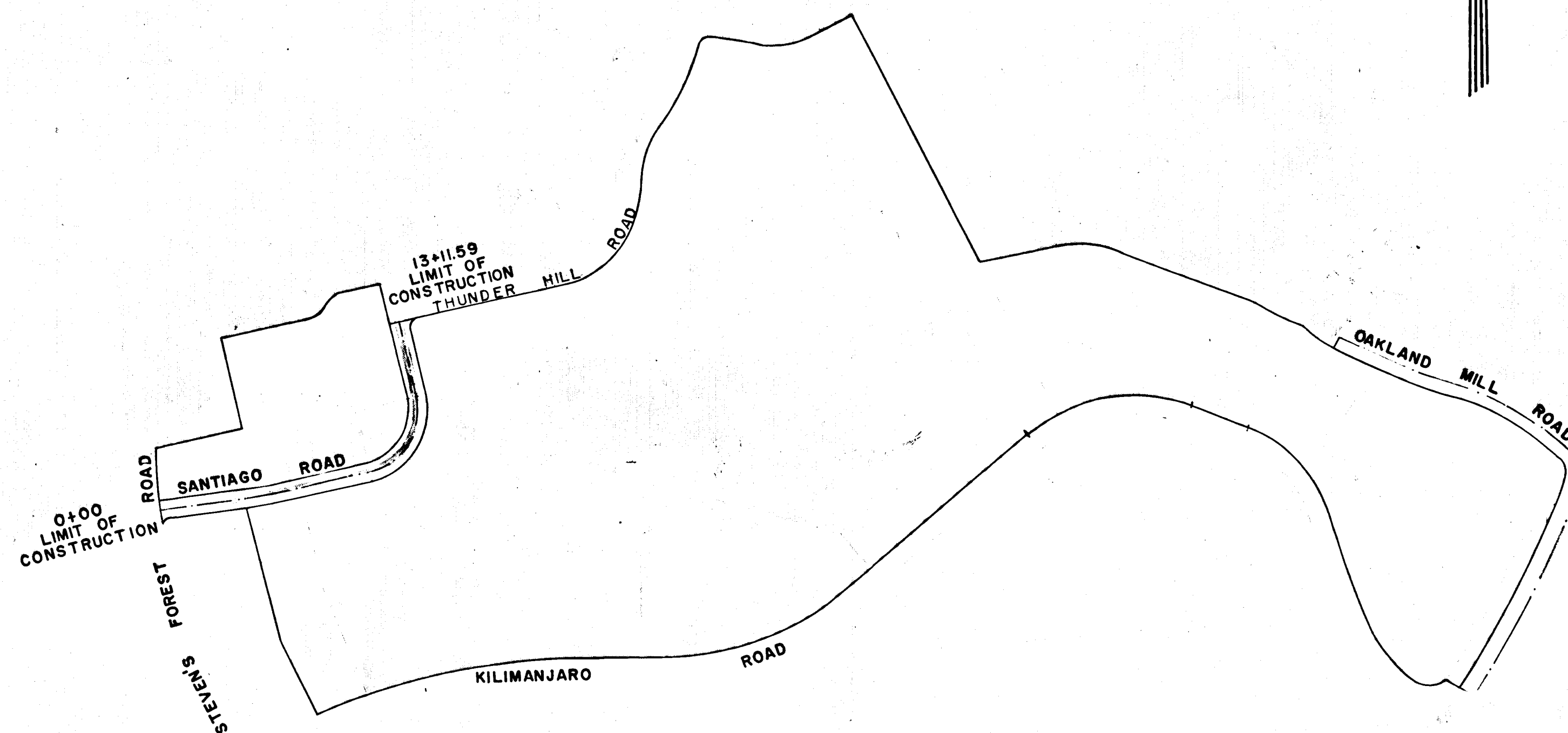
VICINITY MAP
SCALE 1"=2500'

COLUMBIA

HOWARD COUNTY, MARYLAND
6th ELECTION DISTRICT
CONSTRUCTION PLANS
VILLAGE OF OAKLAND MILLS
SECTION 2 AREA 4

NOTES

1. ALL DETAILS ARE FROM THE "ROAD CONSTRUCTION CODE AND STANDARD SPECIFICATIONS" ISSUED OR APPROVED BY THE COUNTY COMMISSIONERS AND THE HOWARD COUNTY ROAD DEPARTMENT.
2. TIE DOWN OF SEEDING AND MULCHING SHOULD BE DONE AS SOON AS ROADS AND LOTS ARE DEVELOPED.
3. TOP SLOPES OF ALL FILL AREAS ON THE ROADS SHOULD BE BERMED DURING CONSTRUCTION TO PREVENT EXCESSIVE EROSION OF THESE FILL SLOPES. THESE BERMS SHOULD BE OUTLETED ON TO UNDISTURBED GROUND. IF THIS IS NOT POSSIBLE THEN TEMPORARY CONSTRUCTED DROP STRUCTURES (FLUMES OR CHUTES) SHOULD BE DESIGNED ON A 10 YEAR FREQUENCY STORM. ALL BERMS TO BE MINIMUM 18" HIGH. BERMS (18" HIGH) SHOULD BE CONSTRUCTED AT THE TOP OF FILL SLOPES BY INDIVIDUAL HOME BUILDERS WHEN THIS TYPE SITUATION ARISES ON LOTS.
4. CONTRACTOR TO NOTIFY ALL UTILITIES COMPANIES 48 HOURS PRIOR TO COMMENCING ANY CONSTRUCTION.
5. ALL CONSTRUCTION ON THIS PROJECT TO BE IN ACCORDANCE WITH HOWARD COUNTY ROAD CODE & STANDARD SPECIFICATIONS.
6. THE HOWARD COUNTY BUREAU OF HIGHWAYS WILL DETERMINE WHICH MATERIAL, RIP-RAP OR CONCRETE, WILL BE USED IN THE CONSTRUCTION OF OUTFALL DITCHES DURING CONSTRUCTION INSPECTIONS.



SHEET		INDEX	
SHEET No.	DESCRIPTION		
1	TITLE SHEET		
2	DRAINAGE AREA MAP		
3	SANTIAGO ROAD	0+00	TO 13+11.59
4	ROADWAY DETAILS		
5	STORM DRAINAGE PROFILE		

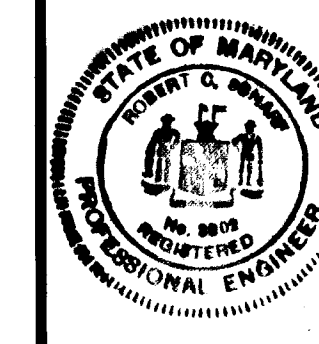
OWNER AND DEVELOPER

THE HOWARD RESEARCH AND DEVELOPMENT CORP.
THE VILLAGE OF CROSS KEYS
BALTIMORE, MARYLAND

No.	REVISION	DATE	BY

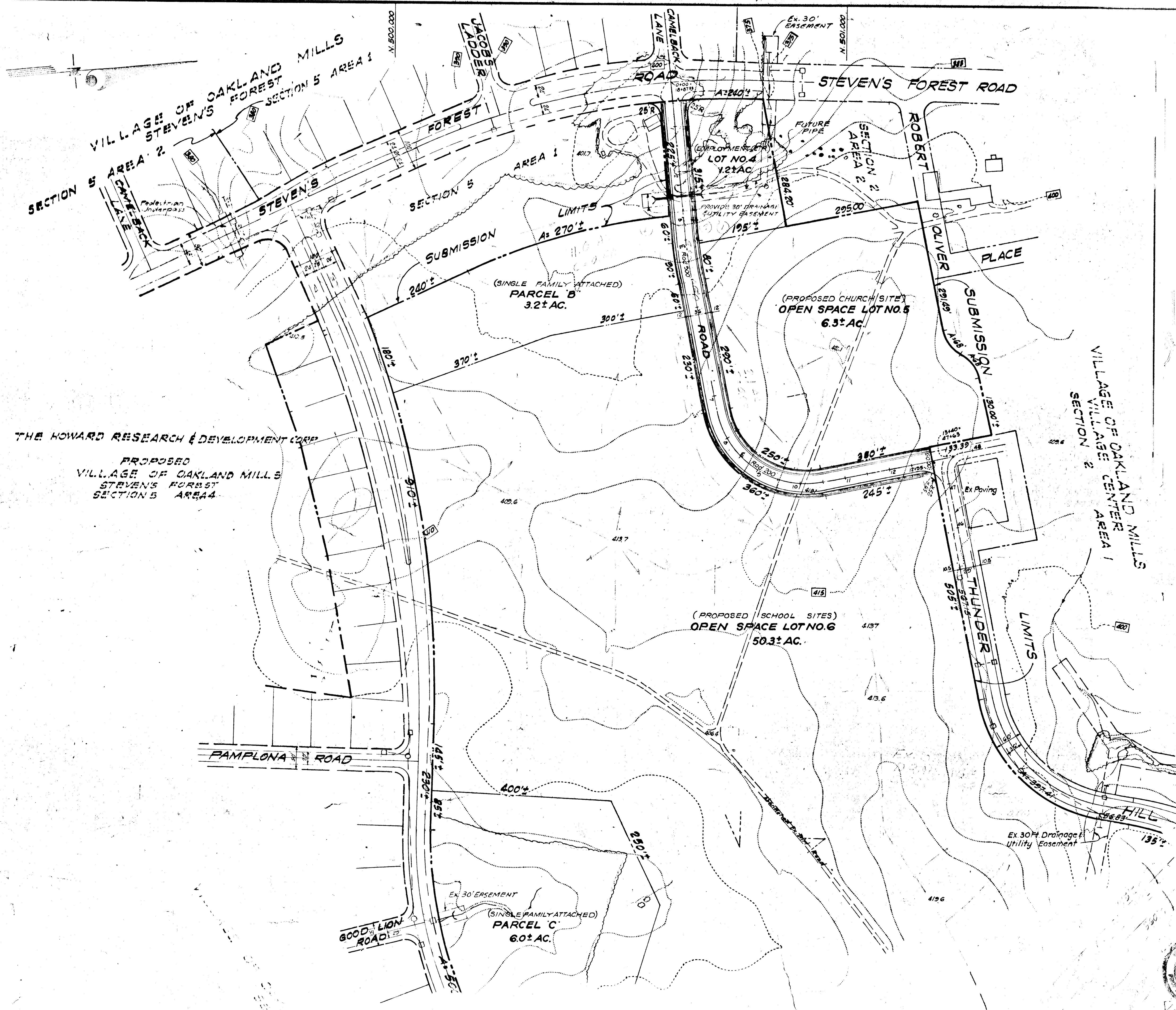


GREENHORNE & O'MARA, INC.
ENGINEERS · ARCHITECTS · PLANNERS · SURVEYORS
6715 KENILWORTH AVE., RIVERDALE, MD.



DEPARTMENT OF PUBLIC WORKS
Hermon S. Ospeil
CHIEF, BUREAU OF HIGHWAYS
DATE 4-23-70
OFFICE OF PLANNING AND ZONING
J. H. Clawson, Jr.
DATE 4-23-70
OFF. ENGINEER DIVISION OF LAND DEVELOPMENT

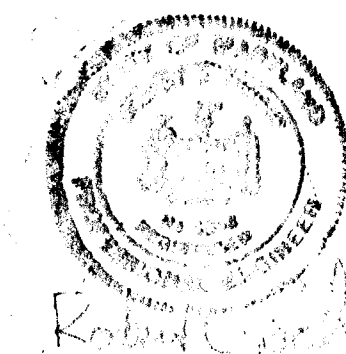
DESIGN	AT & TG	SCALE 1" = 300'
DRAWN	B. J. B.	SHEET No. 1 OF 7
CHECKED	OCT. 69	JOB No. 69-1572
DATE		FILE No.



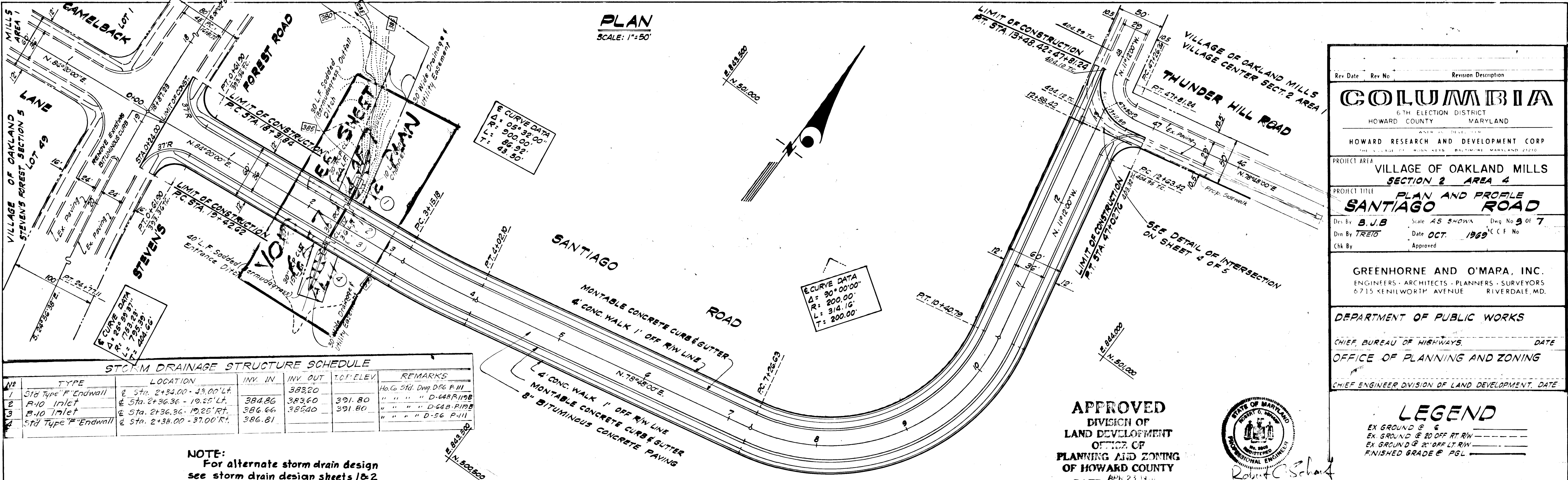
THE HOWARD RESEARCH & DEVELOPMENT CORP.
 PROPOSED
 VILLAGE OF OAKLAND MILLS
 STEVENS FOREST
 SECTION 5 AREA 4

APPROVED
 DIVISION OF
 LAND DEVELOPMENT
 COUNTY OF
 HOWARD COUNTY
 DATE: 12-23-1969

Rev Date	Rev No	Revision Description
COLUMBIA		
6TH ELECTION DISTRICT HOWARD COUNTY MARYLAND		
OWNER AND DEVELOPER HOWARD RESEARCH AND DEVELOPMENT CORP. THE VILLAGE OF CROSS KEYS, BALTIMORE, MARYLAND 21210		
PROJECT AREA VILLAGE OF OAKLAND MILLS SECTION 5 AREA 4		
PROJECT TITLE DRAINAGE AREA MAP		
Des By	Scale AS SHOWN	Dwg No. OF
Dirn By TREB	Date 1969	C.C.F. No.
Chk By	Approved	
GREENHORNE AND O'MARA, INC. ENGINEERS - ARCHITECTS - PLANNERS - SURVEYORS 6715 KENILWORTH AVENUE RIVERDALE, MD.		
DEPARTMENT OF PUBLIC WORKS		
CHIEF, BUREAU OF HIGHWAYS		DATE:
OFFICE OF PLANNING AND ZONING		
CHIEF ENGINEER, DIVISION OF LAND DEVELOPMENT, DATE:		



12-1-69



STORM DRAINAGE STRUCTURE SCHEDULE

NO.	TYPE	LOCATION	INV. IN	INV. OUT	T.O.F. ELEV.	REMARKS
1	Std Type "F" Endwall	@ Sta. 2+34.00 - 43.00' Lt.	383.20	383.20	391.80	Ho. G. Std. Dwg. D-56 P-111
2	R-10 Inlet	@ Sta. 2+36.36 - 19.25' Lt.	384.86	383.60	391.80	" " " " D-648 P-119B
3	R-10 Inlet	@ Sta. 2+36.36 - 19.25' Rt.	386.66	385.40	391.80	" " " " D-648 P-119B
4	Std Type "F" Endwall	@ Sta. 2+38.00 - 37.00' Rt.	386.81	386.81	391.80	" " " " D-56 P-111

NOTE:
 For alternate storm drain design
 see storm drain design sheets 1&2

APPROVED
 DIVISION OF
 LAND DEVELOPMENT
 OFFICE OF
 PLANNING AND ZONING
 OF HOWARD COUNTY
 DATE: APR 23 1969



COLUMBIA
 6TH ELECTION DISTRICT
 HOWARD COUNTY MARYLAND
 HOWARD RESEARCH AND DEVELOPMENT CORP.

PROJECT AREA: **VILLAGE OF OAKLAND MILLS SECTION 2 AREA 4**

PROJECT TITLE: **PLAN AND PROFILE SANTIAGO ROAD**

Des. By: B.J.B. Scale: AS SHOWN Dwg. No. 9 OF 7
 Dwn By: TREIT Date: OCT. 1969 C.F. No.
 Chk. By: Approved

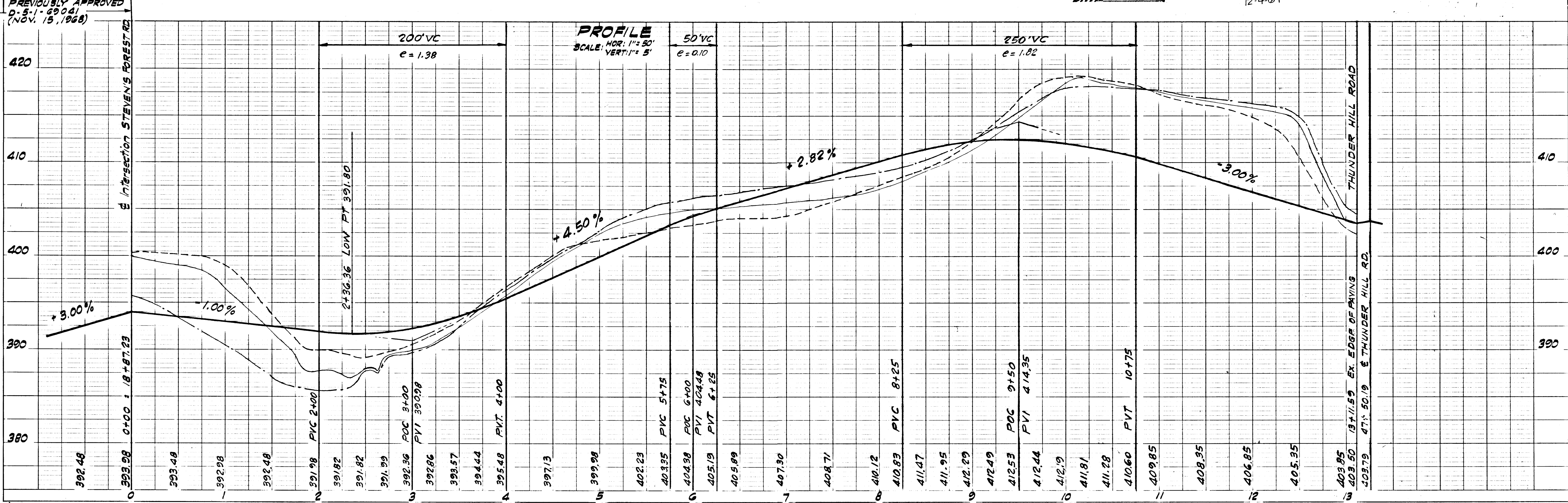
GREENHORNE AND O'MARA, INC.
 ENGINEERS - ARCHITECTS - PLANNERS - SURVEYORS
 6715 KENILWORTH AVENUE RIVERDALE, MD.

DEPARTMENT OF PUBLIC WORKS

CHIEF, BUREAU OF HIGHWAYS. DATE _____
 OFFICE OF PLANNING AND ZONING
 CHIEF ENGINEER, DIVISION OF LAND DEVELOPMENT. DATE _____

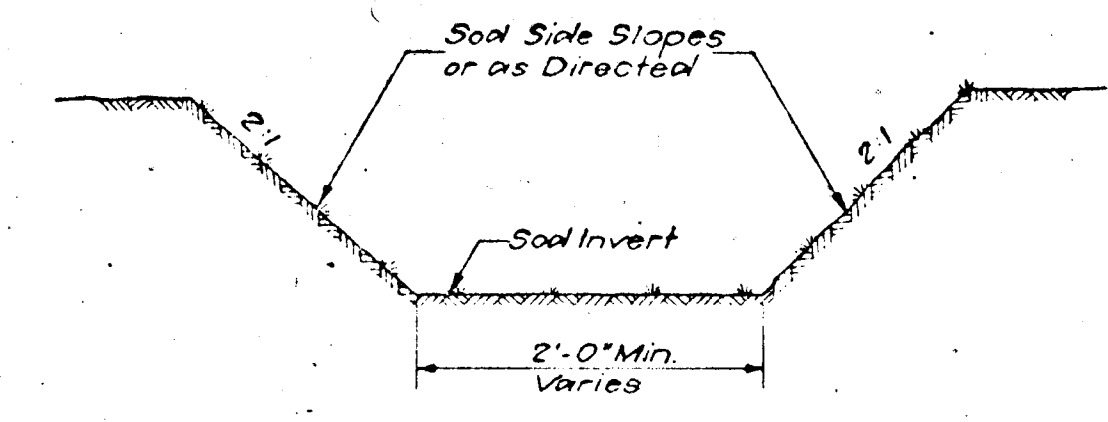
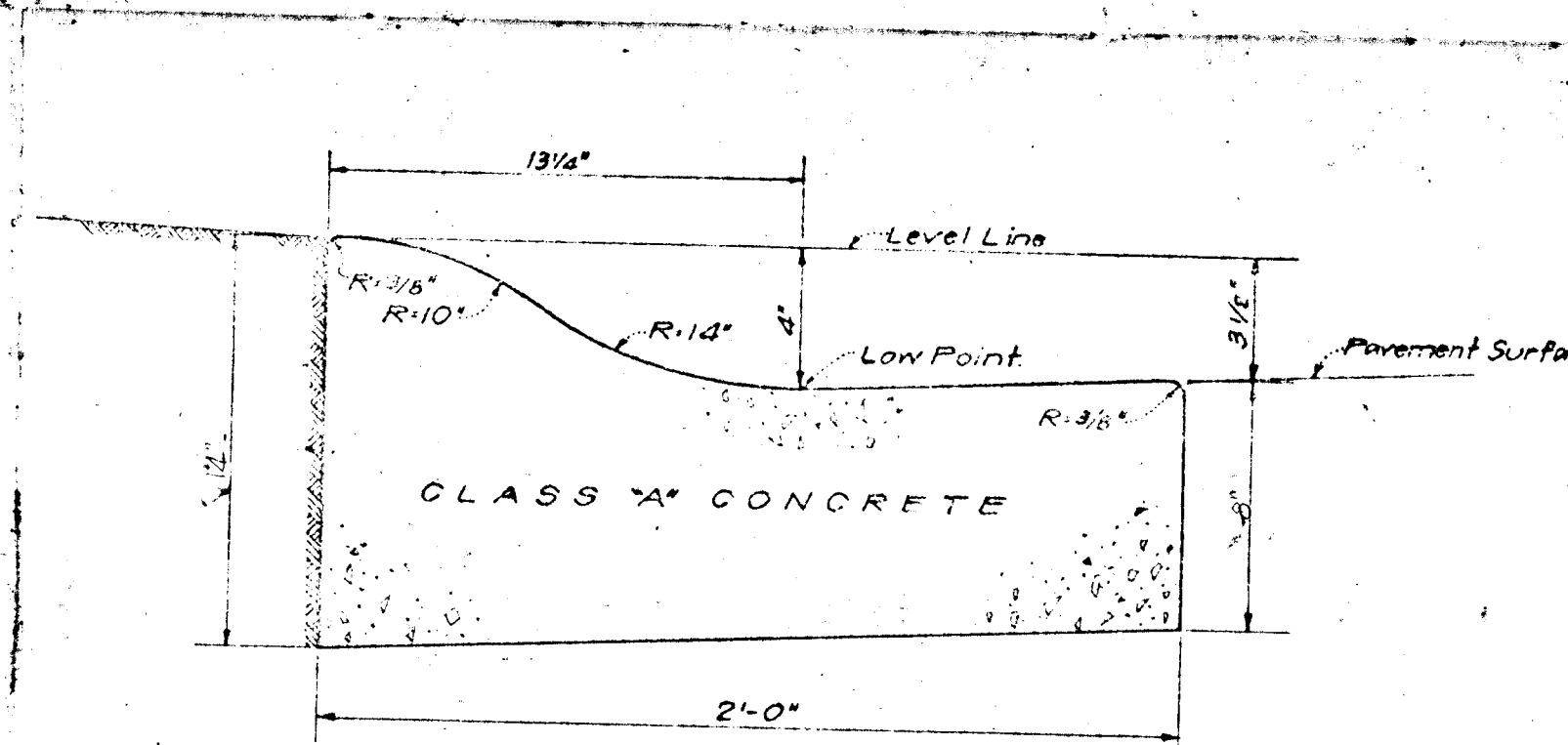
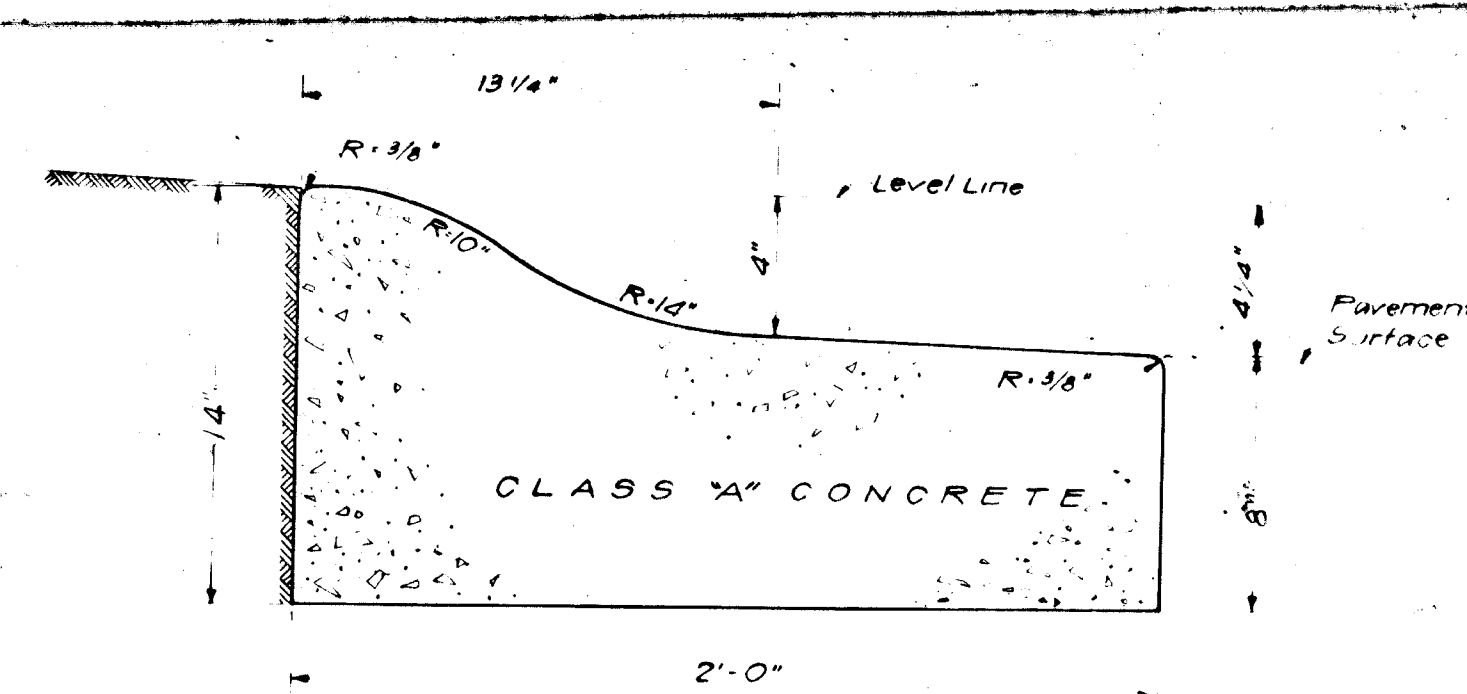
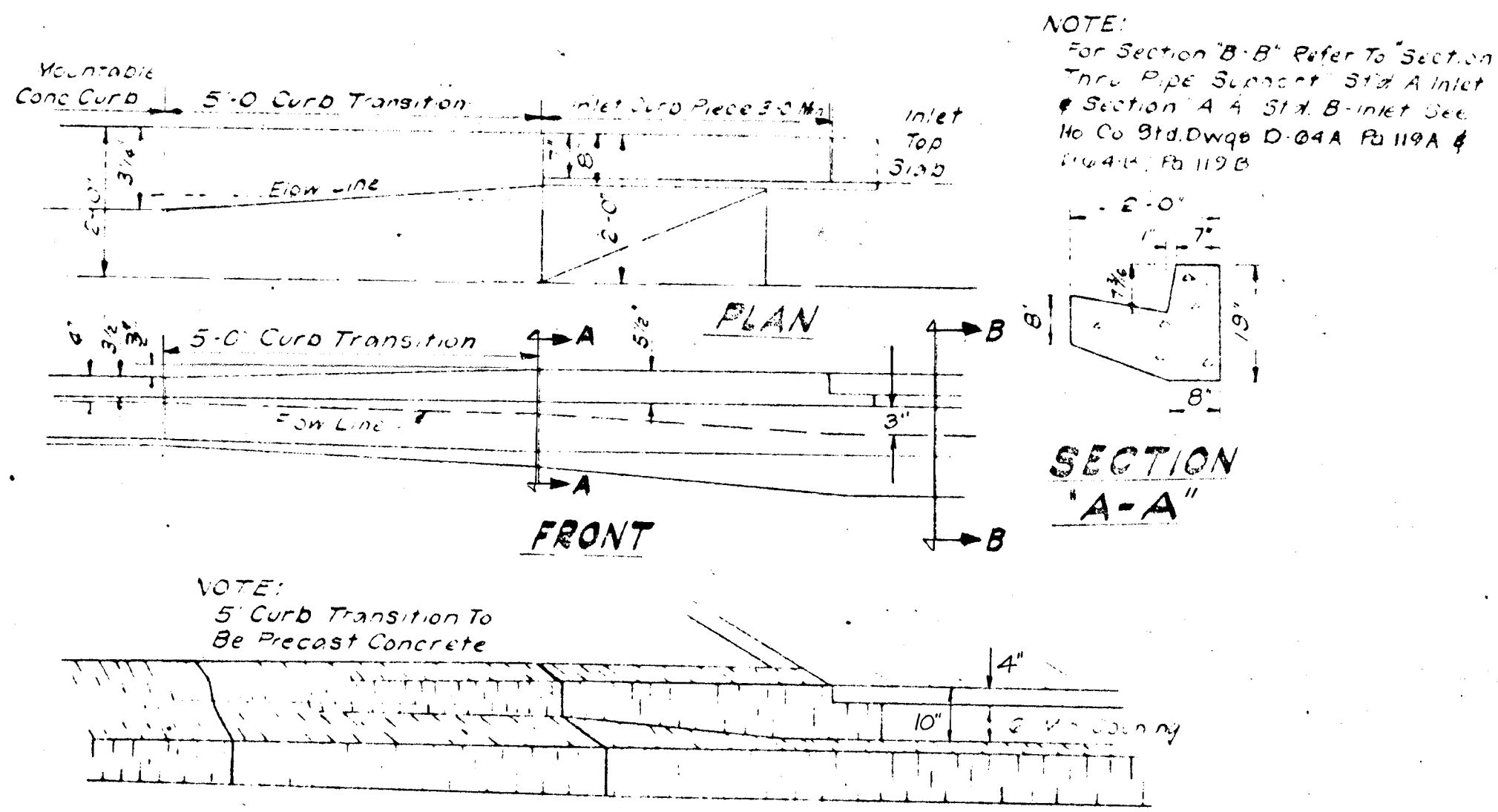
LEGEND

- EX GROUND @
- EX GROUND @ 20' OFF RT. RW
- EX GROUND @ 20' OFF LT. RW
- FINISHED GRADE @ PGL



DATE	BY	REVISION

DATE	BY	REVISION



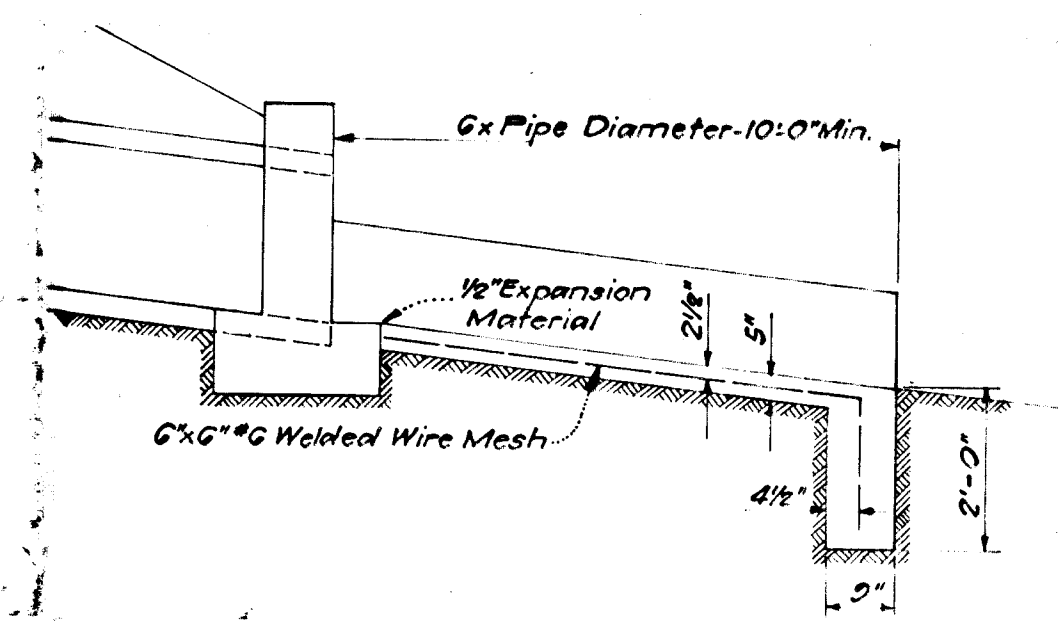
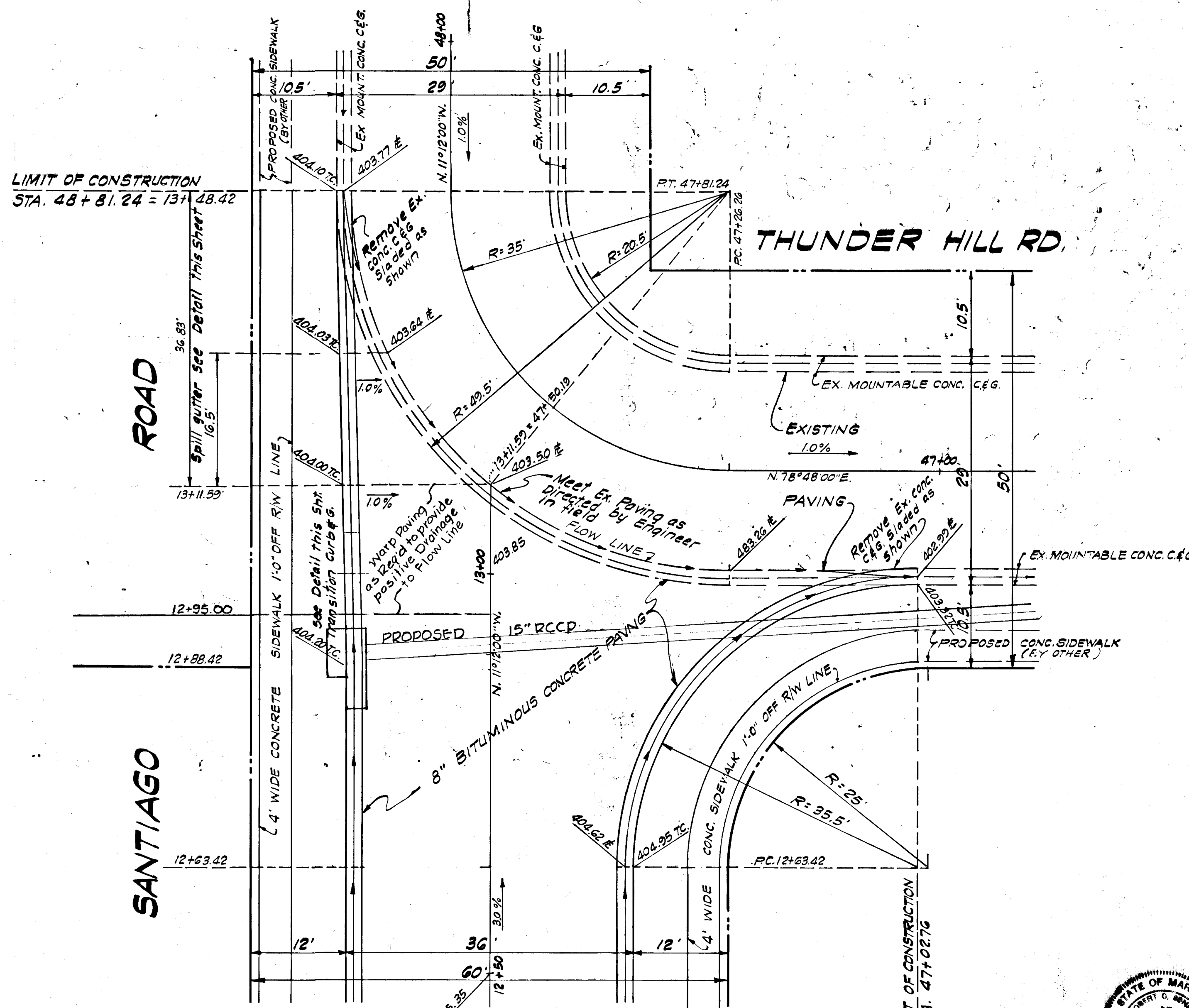
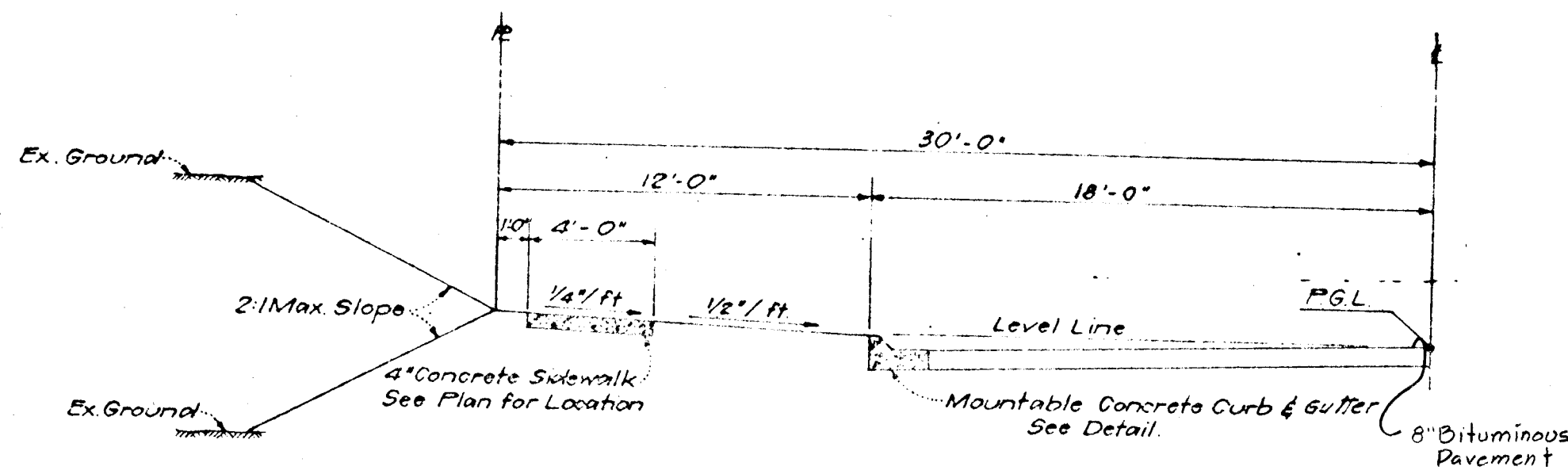
5' CURB TRANSITION
NO SCALE

MOUNTABLE CONCRETE CURB
FROM STA. 13+11.50 TO STA. 13+48.42
NO SCALE

MOUNTABLE CONCRETE CURB & GUTTER
NO SCALE

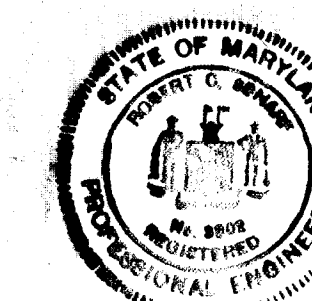
TYPICAL DRAINAGE DITCH
NO SCALE

NOTE: Pavement to be constructed in accordance with the Howard County Road Construction Code and Specifications Drawing D-10, Page 4-5.



TYPICAL CONCRETE CHANNEL & CUTOFF WALL
NO SCALE

APPROVED
DIVISION OF
LAND DEVELOPMENT
OFFICE OF
PLANNING AND ZONING
OF HOWARD COUNTY
DATE: APR 23 1970



Robert C. Schaff
12-4-69

COLUMBIA
6TH ELECTION DISTRICT
HOWARD COUNTY MARYLAND

OWNER AND DEVELOPER
HOWARD RESEARCH AND DEVELOPMENT CORP.
THE VILLAGE OF CROSS KEYS - BALTIMORE, MARYLAND 21210

PROJECT AREA
VILLAGE OF OAKLAND MILLS
SECTION 2 AREA 4

PROJECT TITLE
ROADWAY DETAILS

Des By: B.J.B. Scale: AS SHOWN Dwg. No. 4 OF 7
Din By: TREG Date: OCT. 1969 C.C.F. No.
Chk By: Approved

No.	REVISION	DATE	BY



GREENHORNE & O'MARA, INC.

ENGINEERS · ARCHITECTS · PLANNERS · SURVEYORS

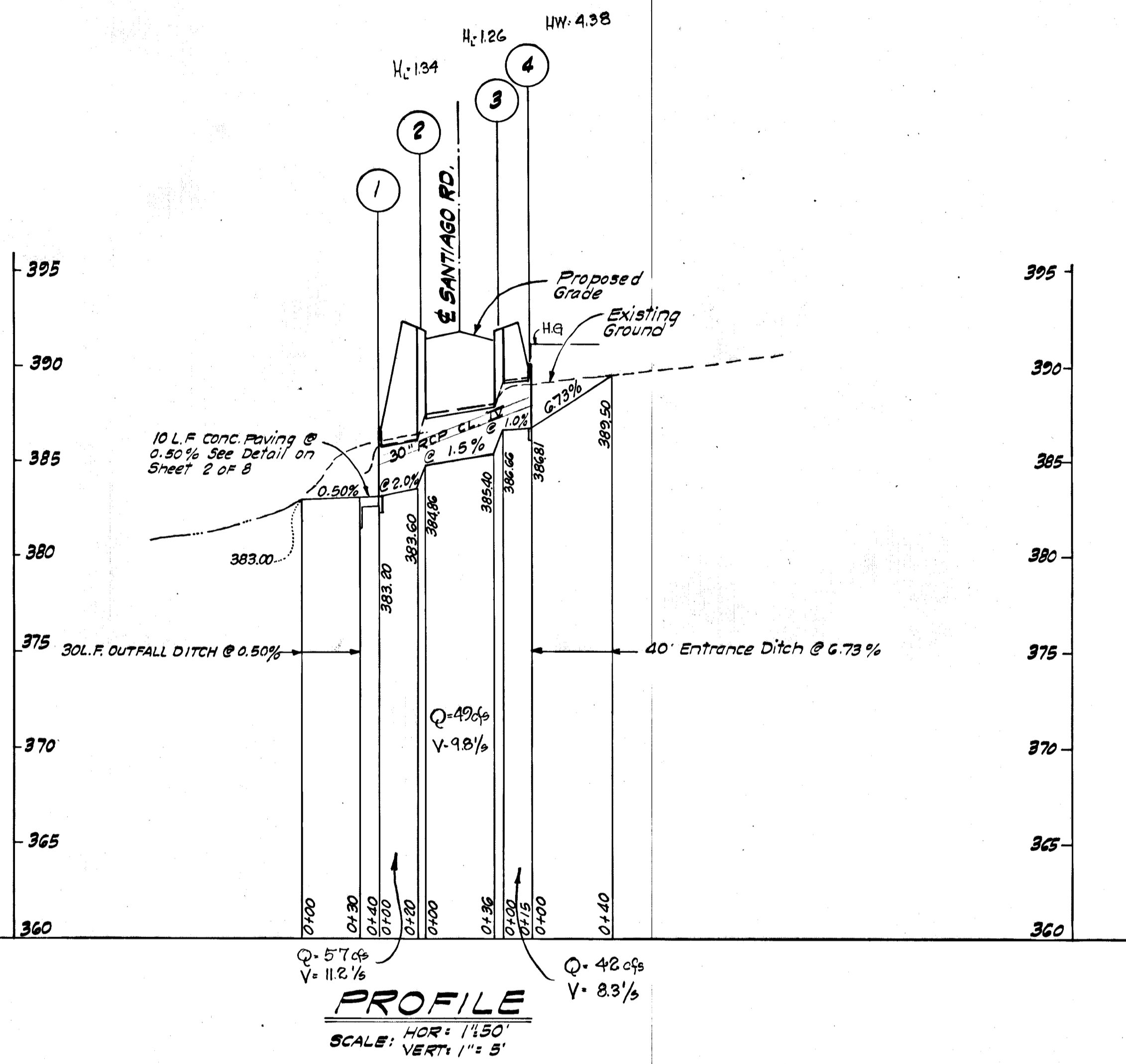
6715 KENILWORTH AVE., RIVERDALE, MD.

DEPARTMENT OF PUBLIC WORKS

CHIEF, BUREAU OF HIGHWAYS. DATE:

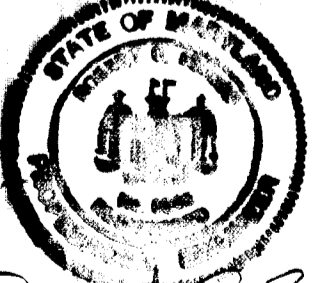
OFFICE OF PLANNING AND ZONING

CHIEF ENGINEER DIVISION OF LAND DEVELOPMENT. DATE:




PROFILE
 HOR: 1"=50'
 SCALE: VERT: 1"=5'

APPROVED
 DIVISION OF
 LAND DEVELOPMENT
 OFFICE OF
 PLANNING AND ZONING
 OF HOWARD COUNTY
 DATE: APR 23 1970


 Robert C. Schand
 12-4-69

COLUMBIA
 6TH ELECTION DISTRICT
 HOWARD COUNTY MARYLAND
 HOWARD RESEARCH AND DEVELOPMENT CORP

No.	REVISION	DATE	BY


GREENHORNE & O'MARA, INC.
 ENGINEERS · ARCHITECTS · PLANNERS · SURVEYORS
 6715 KENILWORTH AVE., RIVERDALE, MD.

DEPARTMENT OF PUBLIC WORKS
 CHIEF, BUREAU OF HIGHWAYS, DATE
 OFFICE OF PLANNING AND ZONING
 CHIEF ENGINEER, DIVISION OF LAND DEVELOPMENT, DATE

PROJECT AREA: VILLAGE OF OAKLAND MILLS SECTION 2 AREA 4
 PROJECT TITLE: STORM DRAIN PROFILE
 Des. By: B.J.B. Scale: AS SHOWN Dwg No: 507 7
 Dwn By: TRS Date: OCT 1969 C.C.F. No.
 Chk By: Approved