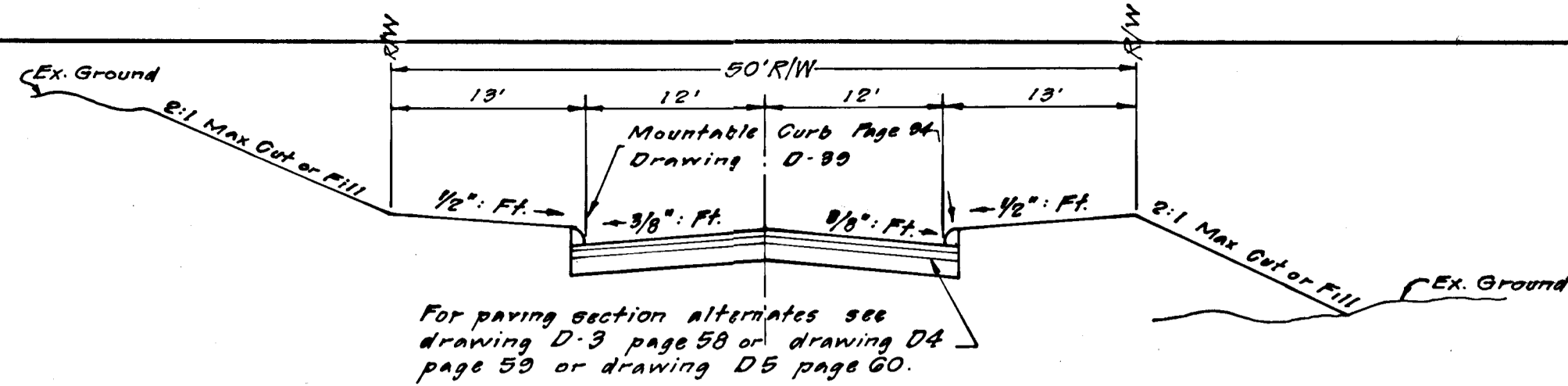
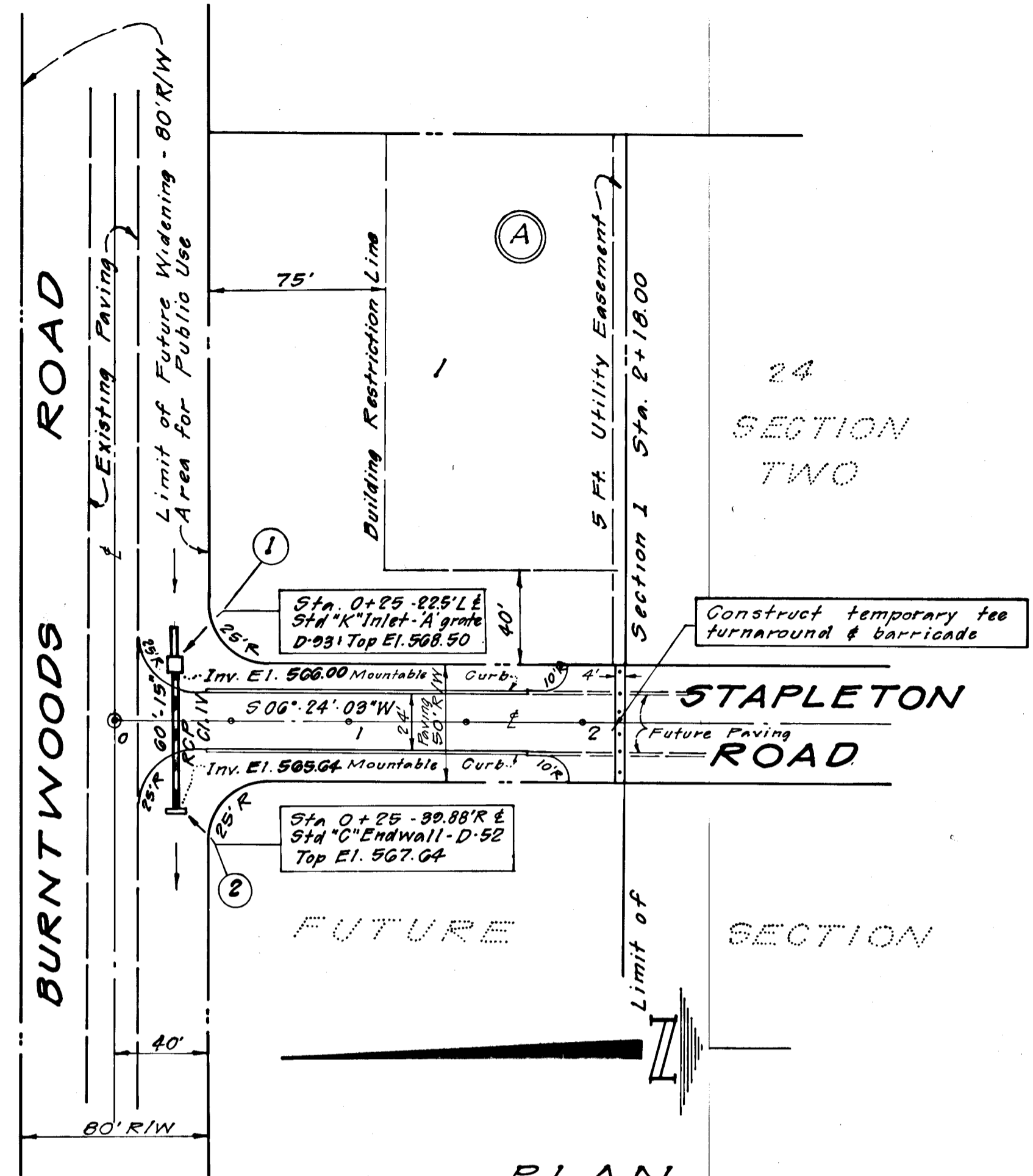


PLAN
 SURVEYED
 PLOTTED
 ALIGNMENT CHECKED
 RT. OF WAY CHECKED
 NO.

PROFILE
 SURVEYED
 PLOTTED
 GRADES CHECKED
 VERTICAL CURVES CHECKED
 NO.



GENERAL NOTES

- All construction shown hereon shall be in accordance with the Howard County Road Construction Code and Standard Specifications dated Nov. 27, 1968 and revised August 1967.
- References to page and drawing numbers shown hereon are referred to the above mentioned Road Construction Code and Standard Specification.

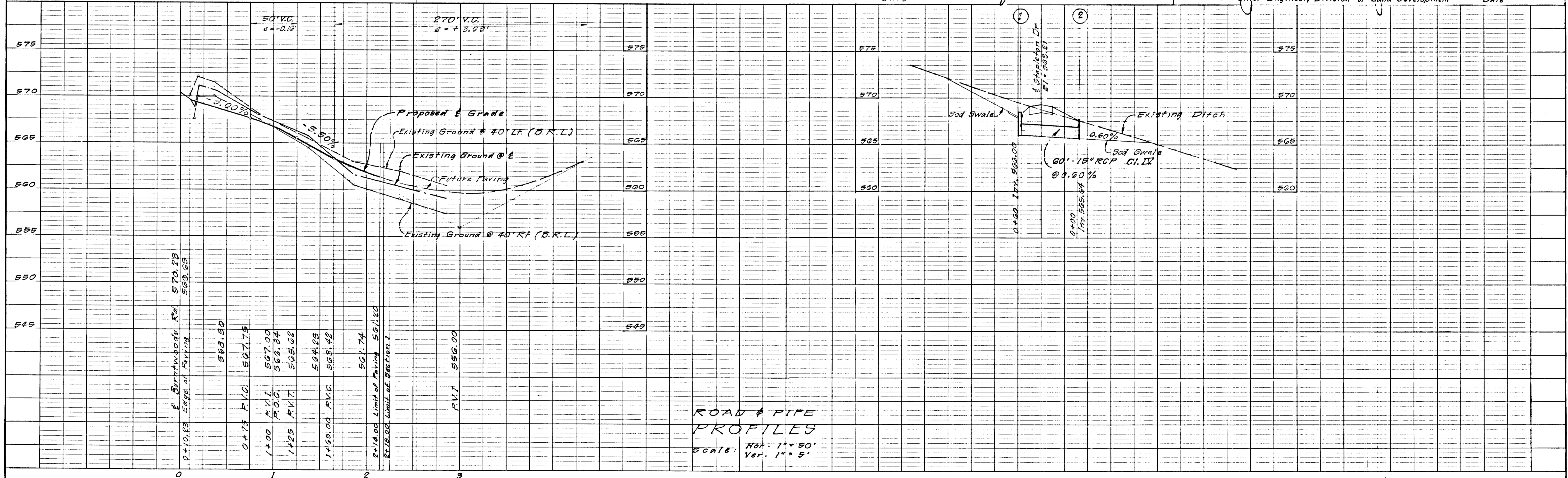
Sheet 1 of 1
PLAN & PROFILE
SECTION ONE
WARFIELD ESTATES
 4TH ELECTION DISTRICT
 HOWARD COUNTY, MARYLAND
 Scale: As shown Dec. 1969
 Prepared By
 Silbermann & Associates
 902 W. 36th Street
 Baltimore, Md. 21211



Feb. 15, 1970
 Date
 Harvey Silbermann

DEPARTMENT OF PUBLIC WORKS
 Franklin W. Noland
 Chief, Bureau of Highways
 3-12-70
 Date

OFFICE OF PLANNING AND ZONING
 J. A. Carson
 Chief Engineer, Division of Land Development
 3-16-70
 Date



#13
 RP III

F-70-43