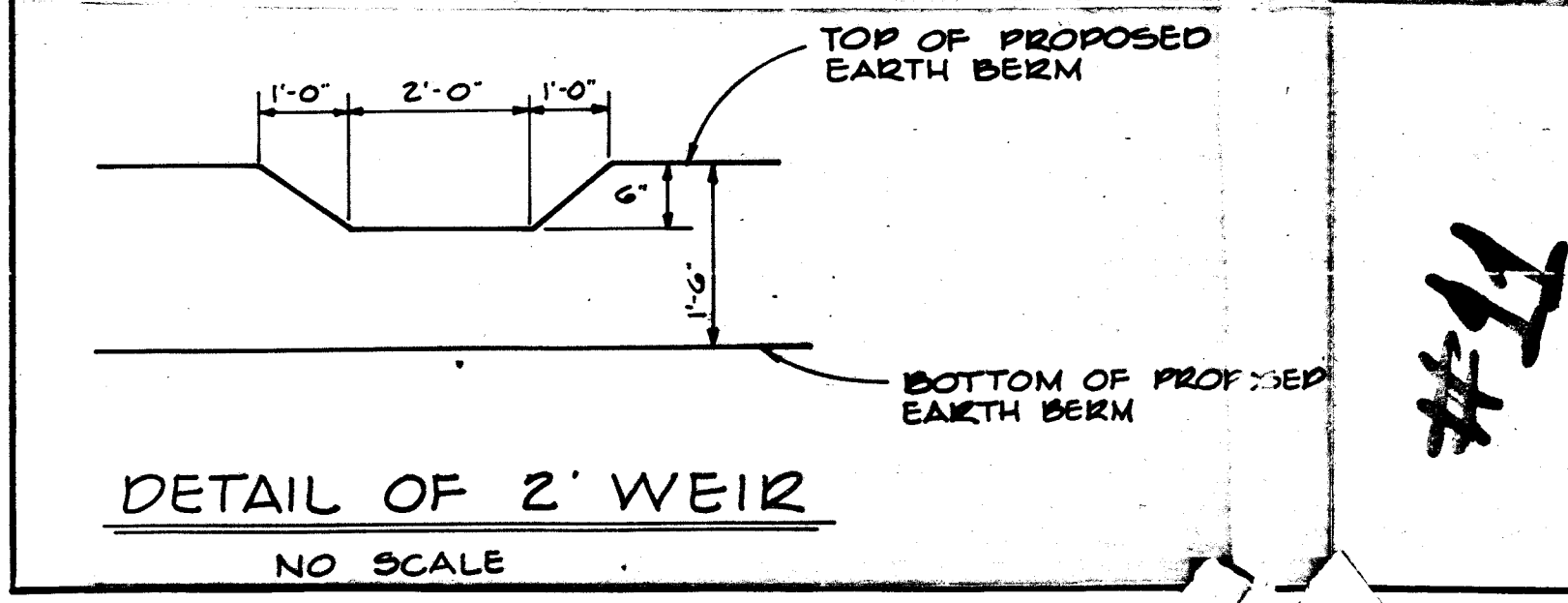
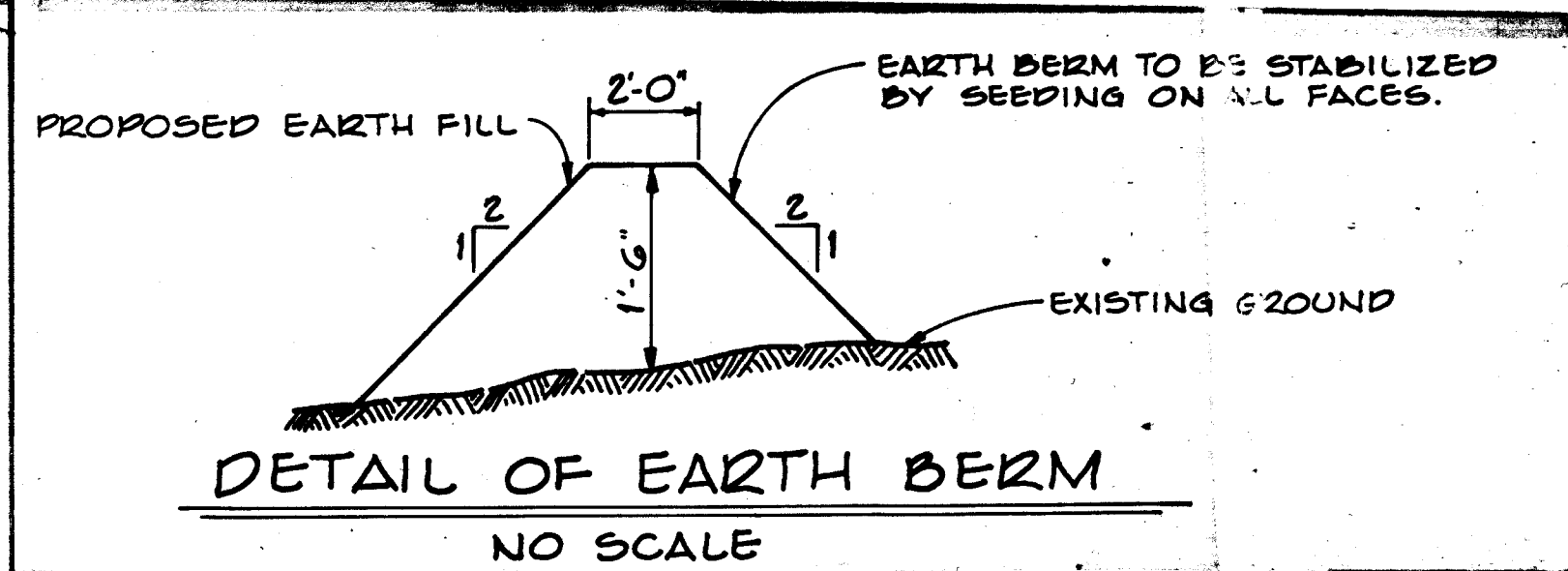


CERTIFICATION BY THE PROFESSIONAL ENGINEER:
 "I certify that the plan of development and the plan for control of silt and erosion meets the requirements, standards, and specifications of the Howard Soil Conservation District."
 (Seal) *George Lambros* Signature Date 11/13/67

CERTIFICATION BY THE DEVELOPER:
 "I certify that all development and/or construction will be done according to this plan of development and plan of silt and sediment control."
 (Seal) *George Lambros* Signature Date 11-13-67

"This development plan is approved for soil erosion and sediment control by the Howard Soil Conservation District."
 Reviewed *George Lambros* Date 11/13/67
 Dist. Conservation
 Approved *Maria E. R. R. R.* Date 11/13/67
 Howard Soil Conservation District

- NOTES:**
- All sediment controls must be constructed prior to any grading.
 - No temporary sediment control structure may be removed or destroyed without approval of the Howard Soil Conservation District.
 - Area to be seeded within road R/W's shall use a seed mixture as follows: annual rye grass (20%), kentucky blue grass (20%) and kentucky 31 fescue (60%) at the rate of 200#/A. Sow with mechanical spreader rake, minimum of two (2) passes with "York Rake", cover and compact with cultipacker. Surface preparation to include ground limestone over topsoil surface area at the rate of 1/4 T/A (60#/1000#) commercial fertilizer (5-10-10) at the rate of 3/4 T/A (35#/1000#) and super-phosphate at the rate of 600#/A (15#/1000#).

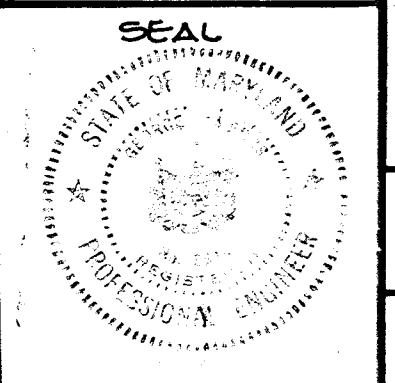


GENERAL NOTES

- ZONING - NEW TOWN
- TOTAL AREA 34.9 AC.
 AREA OF LOTS 34.9 AC.
 AREA OF ROADS
 AREA OF MULTI-FAMILY 34.0 AC.
 AREA OF COMMERCIAL
 AREA OF OPEN SPACE 0.6 AC.
- TOTAL NUMBER OF LOTS 9
 S.F.L.D.
 S.F.M.D.
 MULTI-FAMILY 2
 COMMERCIAL
 OPEN SPACE 1
- TOPOGRAPHY TAKEN FROM AERIAL TOPO PREPARED BY MAPS INCORPORATED.
- PUBLIC WATER AND SEWER SYSTEMS TO BE MADE AVAILABLE AND UTILIZED.
- STANDARD SYMBOLS:
 PROPOSED HEADWALLS U
 PROPOSED INLETS O
 PROPOSED MANHOLES O
 PROPOSED PIPES ---
 PROPOSED CONCRETE SIDEWALKS AND MACADAM PATHWAYS ---
- INTERNAL DRAINAGE SYSTEM TO BE DEVELOPED AT SUCH TIME THAT A SITE PLAN IS PREPARED AND SUBMITTED TO THE APPROPRIATE COUNTY AGENCIES.

1-1079-1	REVISED PER SCS COMMENTS
Rev. Date	Rev. No.
COLUMBIA	
M A R Y L A N D	
5TH ELECTION DISTRICT	
HOWARD RESEARCH AND DEVELOPMENT CORP.	
THE VILLAGE OF CROSS KEYS - BALTIMORE, MARYLAND 21210	
PROJECT AREA	
VILLAGE OF HARPER'S CHOICE	
SECTION 5 AREA 4	
PROJECT TITLE	
SOIL CONSERVATION MAP	
Des. By: T.R.C.	Scale: 1" = 100'
Des. By: C.H.W. JR.	Date: 11-13-67
Des. By: H.R.M.	Approved: 11-13-67

George Lambros
 GEORGE LAMBROS
 OAKLAND BUILDING, COLUMBIA, M.D. 21045



PLAN
 REVISIONS
 NO. DATE BY
 1 10/13/69 W.P.K.
 2 10/13/69 W.P.K.
 3 10/13/69 W.P.K.
 4 10/13/69 W.P.K.
 5 10/13/69 W.P.K.
 6 10/13/69 W.P.K.
 7 10/13/69 W.P.K.
 8 10/13/69 W.P.K.
 9 10/13/69 W.P.K.
 10 10/13/69 W.P.K.
 11 10/13/69 W.P.K.
 12 10/13/69 W.P.K.
 13 10/13/69 W.P.K.
 14 10/13/69 W.P.K.
 15 10/13/69 W.P.K.
 16 10/13/69 W.P.K.
 17 10/13/69 W.P.K.
 18 10/13/69 W.P.K.
 19 10/13/69 W.P.K.
 20 10/13/69 W.P.K.
 21 10/13/69 W.P.K.
 22 10/13/69 W.P.K.
 23 10/13/69 W.P.K.
 24 10/13/69 W.P.K.
 25 10/13/69 W.P.K.
 26 10/13/69 W.P.K.
 27 10/13/69 W.P.K.
 28 10/13/69 W.P.K.
 29 10/13/69 W.P.K.
 30 10/13/69 W.P.K.
 31 10/13/69 W.P.K.
 32 10/13/69 W.P.K.
 33 10/13/69 W.P.K.
 34 10/13/69 W.P.K.
 35 10/13/69 W.P.K.
 36 10/13/69 W.P.K.
 37 10/13/69 W.P.K.
 38 10/13/69 W.P.K.
 39 10/13/69 W.P.K.
 40 10/13/69 W.P.K.
 41 10/13/69 W.P.K.
 42 10/13/69 W.P.K.
 43 10/13/69 W.P.K.
 44 10/13/69 W.P.K.
 45 10/13/69 W.P.K.
 46 10/13/69 W.P.K.
 47 10/13/69 W.P.K.
 48 10/13/69 W.P.K.
 49 10/13/69 W.P.K.
 50 10/13/69 W.P.K.
 51 10/13/69 W.P.K.
 52 10/13/69 W.P.K.
 53 10/13/69 W.P.K.
 54 10/13/69 W.P.K.
 55 10/13/69 W.P.K.
 56 10/13/69 W.P.K.
 57 10/13/69 W.P.K.
 58 10/13/69 W.P.K.
 59 10/13/69 W.P.K.
 60 10/13/69 W.P.K.
 61 10/13/69 W.P.K.
 62 10/13/69 W.P.K.
 63 10/13/69 W.P.K.
 64 10/13/69 W.P.K.
 65 10/13/69 W.P.K.
 66 10/13/69 W.P.K.
 67 10/13/69 W.P.K.
 68 10/13/69 W.P.K.
 69 10/13/69 W.P.K.
 70 10/13/69 W.P.K.
 71 10/13/69 W.P.K.
 72 10/13/69 W.P.K.
 73 10/13/69 W.P.K.
 74 10/13/69 W.P.K.
 75 10/13/69 W.P.K.
 76 10/13/69 W.P.K.
 77 10/13/69 W.P.K.
 78 10/13/69 W.P.K.
 79 10/13/69 W.P.K.
 80 10/13/69 W.P.K.
 81 10/13/69 W.P.K.
 82 10/13/69 W.P.K.
 83 10/13/69 W.P.K.
 84 10/13/69 W.P.K.
 85 10/13/69 W.P.K.
 86 10/13/69 W.P.K.
 87 10/13/69 W.P.K.
 88 10/13/69 W.P.K.
 89 10/13/69 W.P.K.
 90 10/13/69 W.P.K.
 91 10/13/69 W.P.K.
 92 10/13/69 W.P.K.
 93 10/13/69 W.P.K.
 94 10/13/69 W.P.K.
 95 10/13/69 W.P.K.
 96 10/13/69 W.P.K.
 97 10/13/69 W.P.K.
 98 10/13/69 W.P.K.
 99 10/13/69 W.P.K.
 100 10/13/69 W.P.K.

NOTE:
 Proposed Paving to be
 tied into Exist. Paving
 at Harper's Farm Rd. as
 directed by Engineer
 in field.

NOTE:
 CONTRACTOR TO NOTIFY THE
 GAS & ELECTRIC CO. 48 HRS. PRIOR TO
 BEGINNING ANY CONSTRUCTION.

Sta. 0+60 Limit of
 Curb & Gutter

Limit of Construction
 Sta. 0+22

Harper's Farm Road
 Plat Book 15 folio 25

The Howard Research and Development Corp.
 469/196

Contractor to Grade
 this area to provide
 positive drainage to
 EW-2

CURVE DATA
 $\Delta = 39^{\circ}28'05''$
 $R = 400.00'$
 $L = 276.70'$
 $T = 144.14'$
 $CHD = N84^{\circ}09'56''E$
 $271.22'$

CURVE DATA
 $\Delta = 39^{\circ}00'00''$
 $R = 400.00'$
 $L = 230.38'$
 $T = 118.48'$
 $CHD = N87^{\circ}20'57''E$
 $227.21'$

AS BUILT ELEVATION CHECK ON
 AUG. 13, 1973 PRINTED BY
 WALTER PARK

PLAN
 SCALE 1"=50'

The Howard Research and Development Corp.
 469/196



OAKLAND BLVD. COLUMBIA, MD
 George Lambros 10/1/69
 GEORGE LAMBROS DATE

DEPARTMENT OF PUBLIC WORKS
 Deanville H. Holland (P.K.) 1-27-70
 CHIEF, BUREAU OF HIGHWAYS
 OFFICE OF PLANNING AND ZONING
 J.H. Clawson 1-27-70
 DIVISION OF LAND DEVELOPMENT

STORM DRAINAGE STRUCTURE SCHEDULE			
NO.	TYPE	INLET ELEV.	TOP ELEV.
I-1	A-10	436.60	442.00
I-2	A-5	438.00	442.00
EW1	Mod. Type "F" Headwall	434.08	438.08
EW2	" " " " " "	434.50	438.50

VICINITY MAP
 SCALE 1"=500'

PROJ. NO. _____
 REV. DATE _____ REV. NO. _____ REVISION DESCRIPTION _____

COLUMBIA
 MARYLAND
 5TH ELECTION DISTRICT

HOWARD RESEARCH AND DEVELOPMENT CORP.
 THE VILLAGE OF CROSS KEYS - COLUMBIA, MARYLAND 21030

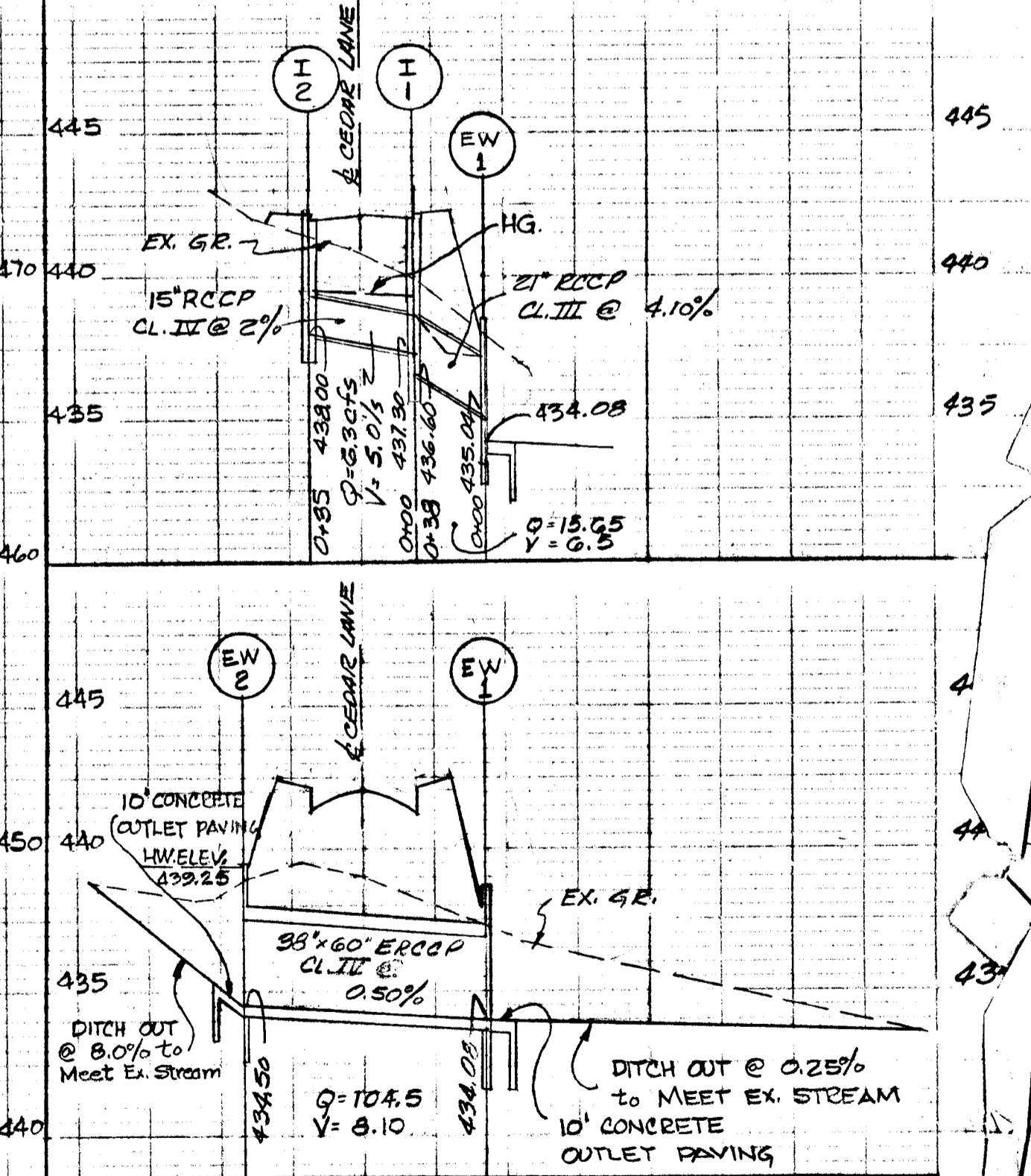
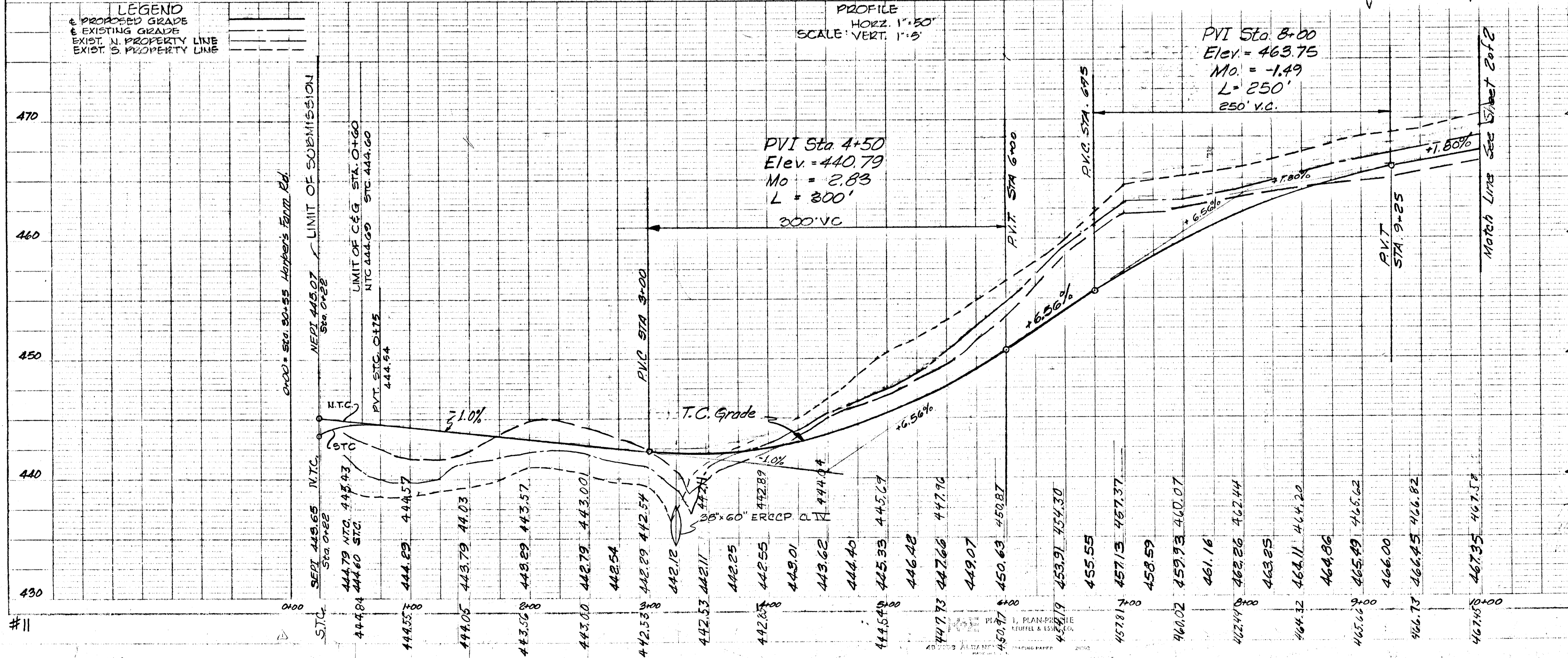
PROJECT AREA: **VILLAGE OF HARPER'S CHOICE**
SECTION 5, AREA 4

CONSTRUCTION DWG.

Des. By: **G.L.** Scale: **As Shown** Proj. No: **1053**
 Pl. By: **E.J.P.** Date: **10-13-69** C.C. No: _____
 Chk. By: **H.R.M.** Approved: _____

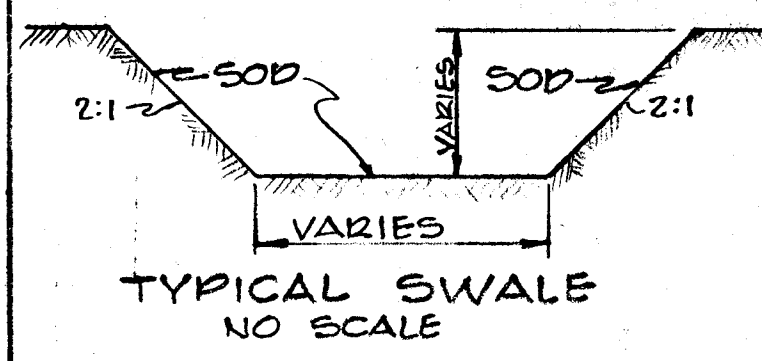
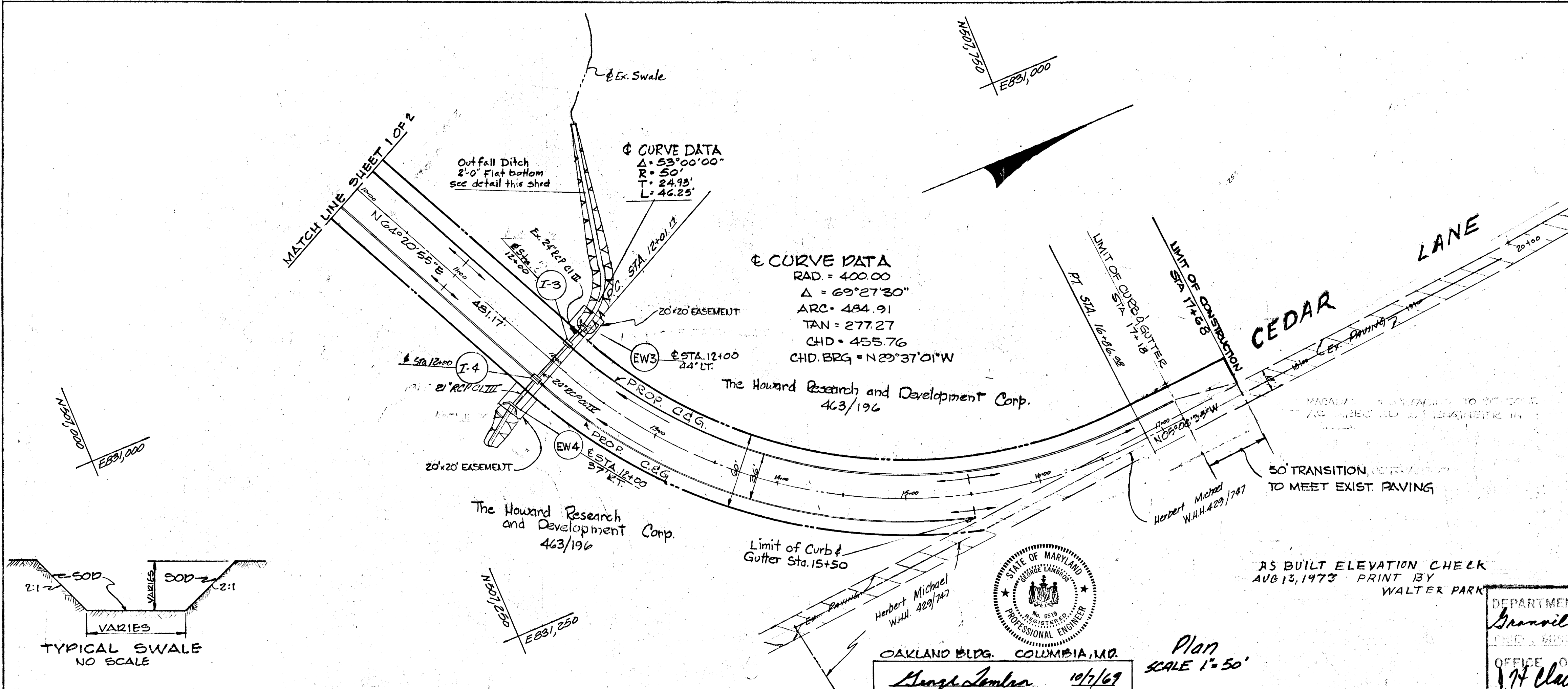
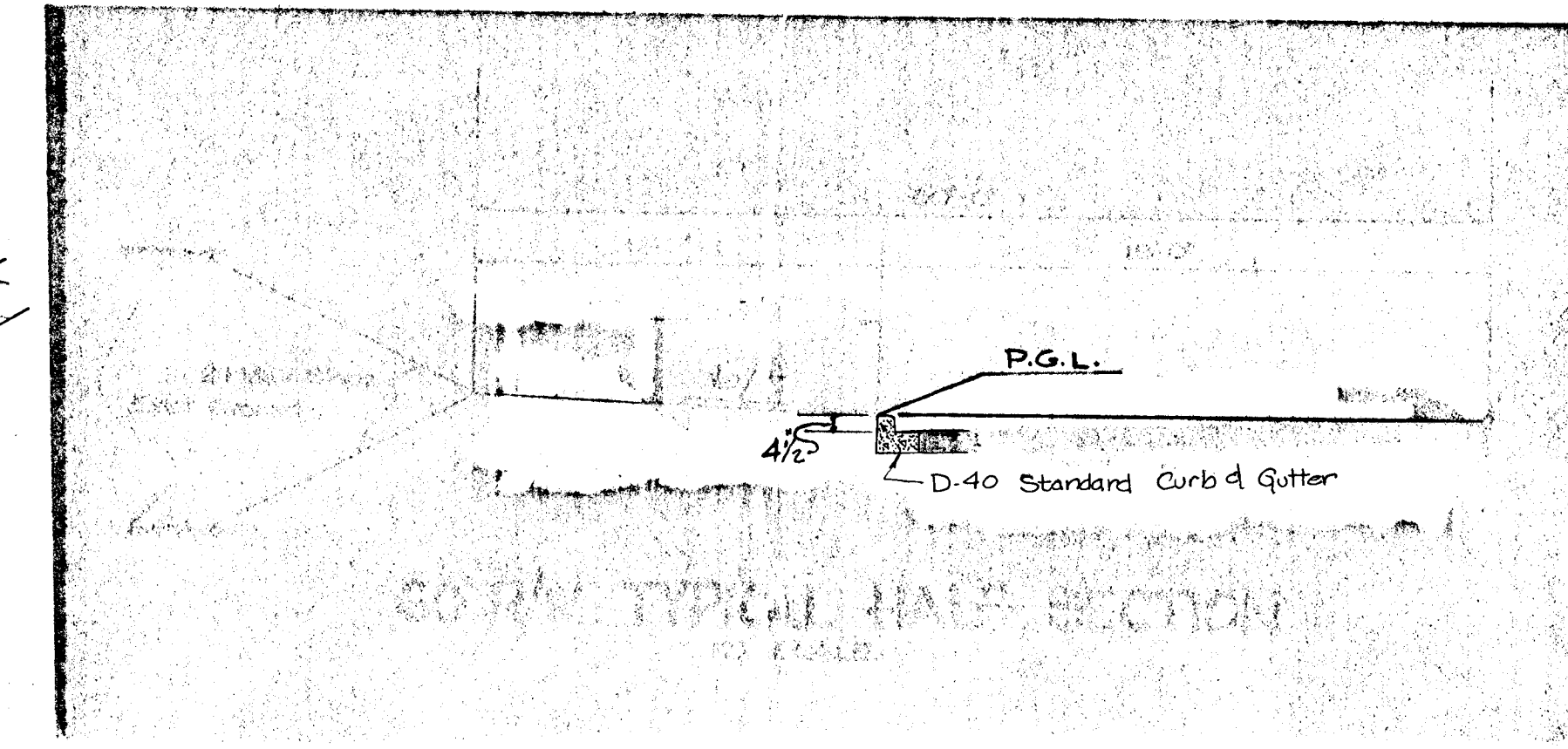
LEGEND
 - - - PROPOSED GRADE
 - - - EXISTING GRADE
 - - - EXIST. N. PROPERTY LINE
 - - - EXIST. S. PROPERTY LINE

PROFILE
 HORIZ. 1"=50'
 SCALE VERT. 1"=5'



AS BUILT MARCH
 J.H.L.

STORM DRAIN STRUCTURE SCHEDULE					
NO.	TYPE	LOCATION	INV. IN	INV. OUT	REMARKS
I-3	STD A-5 INLET	STA. 12+00	462.55	462.35	
I-4	" " " "	" " " "	463.15	462.90	
EW-3	MOD. TYPE "F" HEADWALL	44' LF.		462.04	
EW-4	END SUPPORT WALL	37' ST	463.91		



OAKLAND BLDG. COLUMBIA, MD.
George Lambros
 GEORGE LAMBROS
 10/1/69
 DATE

AS BUILT ELEVATION CHECK
 AUG 13, 1973 PRINT BY
 WALTER PARK

DEPARTMENT OF PUBLIC WORKS
Granville J. Hilland (F.K.) 1-27-70
 CHIEF, BUREAU OF HIGHWAYS DATE
 OFFICE OF PLANNING AND ZONING
J.H. Clawson 1-27-70
 CHIEF, DIVISION OF LAND DEVELOPMENT

10/24 1 REVISED PROP. GRADE & STORM DRAINS
 Key Date Rev No

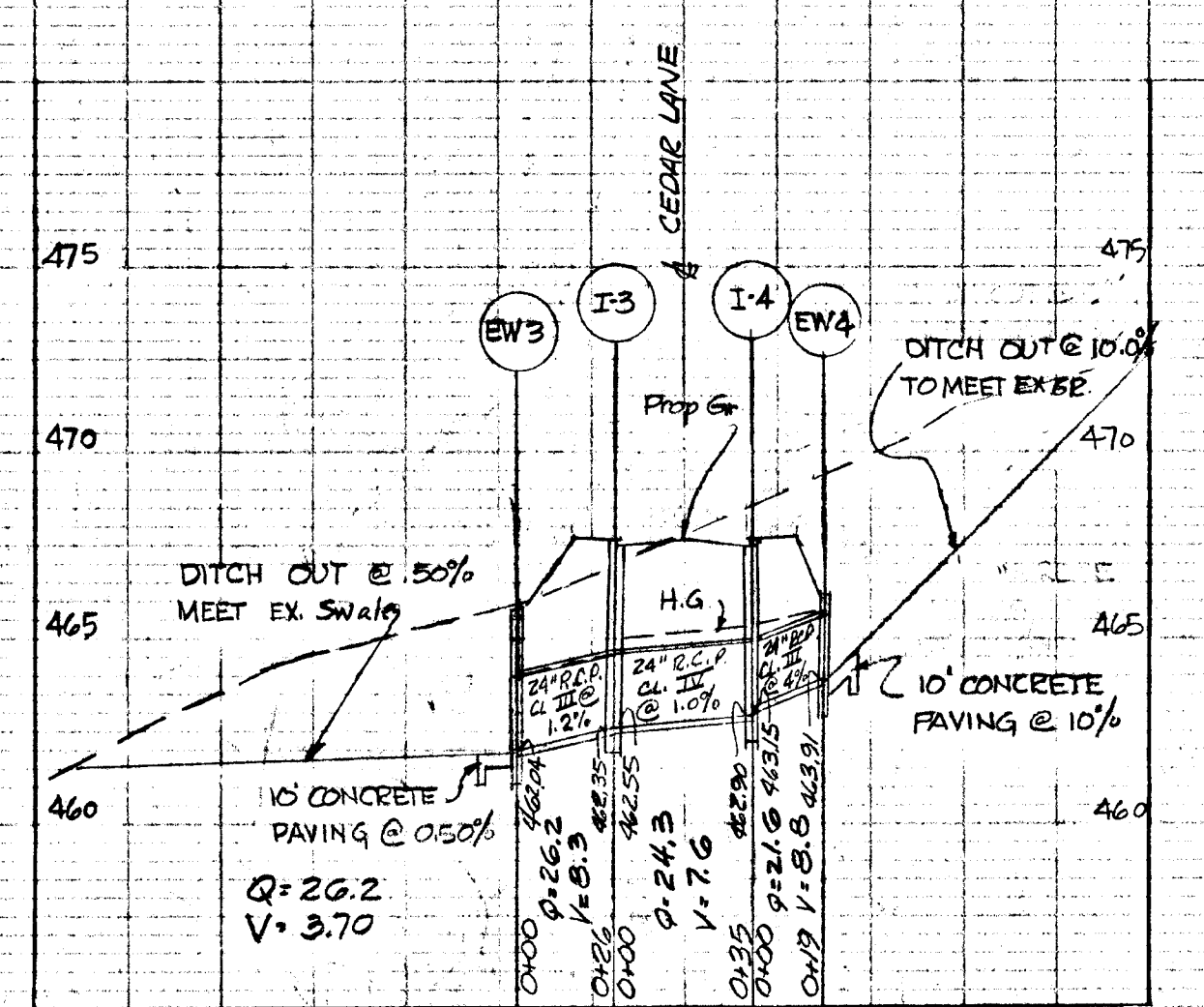
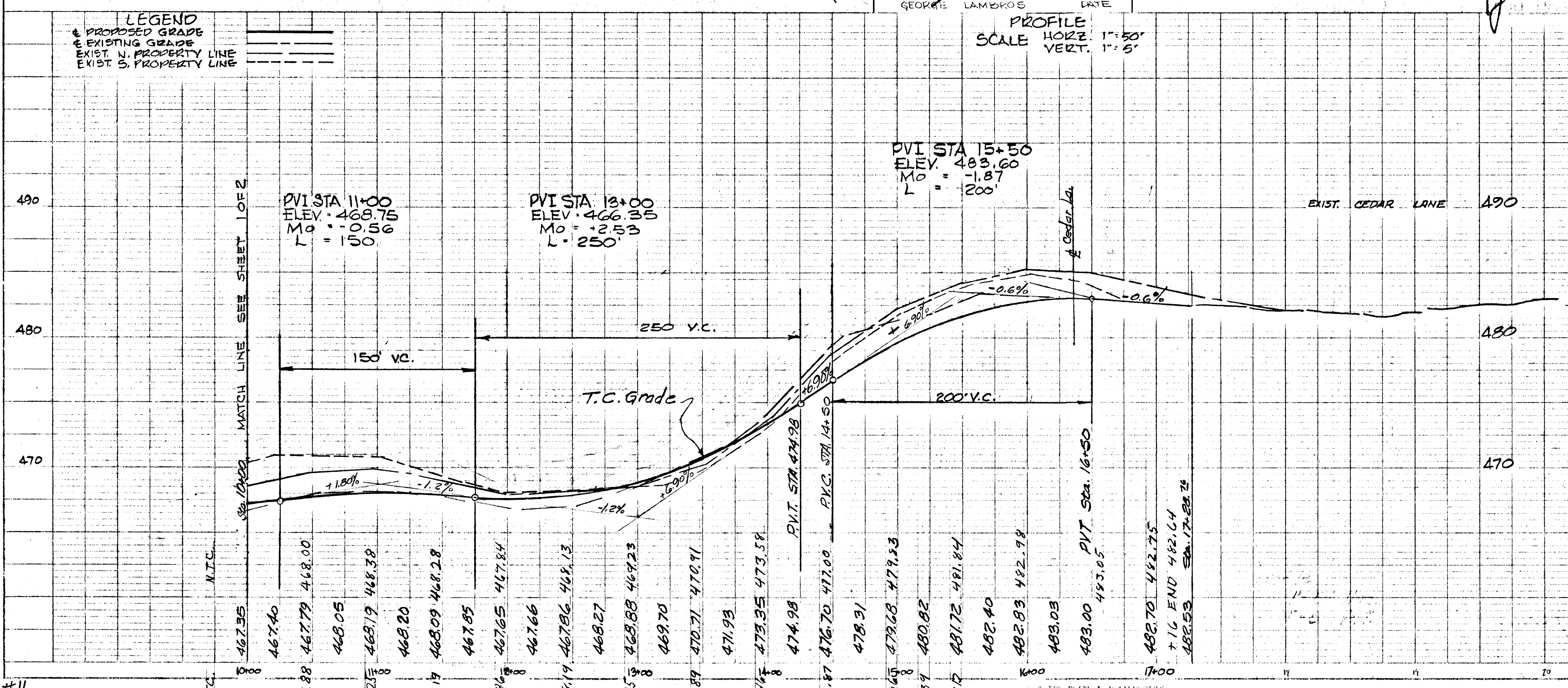
COLUMBIA
 MARYLAND
 5TH ELECTION DISTRICT

HOWARD RESEARCH AND DEVELOPMENT CORP.
 THE VILLAGE OF CHERRY CREEK - BALTIMORE, MARYLAND 21210

PROJECT AREA: VILLAGE OF HARRIS CHOICE
 SECTION 5, AREA 4

PROJECT TITLE: CONSTRUCTION DWG.

Des. By: G.L. Scale: As Shown 1" = 50' 1" = 5'
 Drawn By: E.V.P. Date: 10-3-69 C.C.F. No.
 Chk. By: H.R.M. Approved



AS BUILT MARCH 7, 1974
 J.H.L.