

Note: For detail & notes pertaining to soil erosion and sediment control, see sheet #1 of 3.

I certify that the plan of development and the plan for control of silt and erosion meets the requirements, standards, and specifications of the Howard Soil Conservation District.

David F. Murray
David F. Murray, Reg. P.E. No. 6584

8/20/69
Date

I certify that all development and/or construction will be done according to this plan of development and plan of silt and sediment control.

Charles K. Chauson
(Developer)

8/20/69
Date

This development plan is approved for soil erosion and sediment control by the Howard Soil Conservation District.

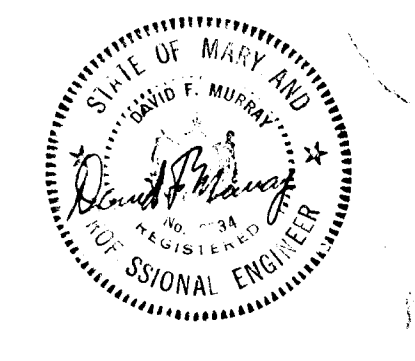
Reviewed *Oliver J. Lewis* District Conservationist 8/21/69 Date
Approved *Robert V. Young* Howard S.C.D. 8/21/69 Date

OWNER & DEVELOPER
ARTERY ENTERPRISES
10400 Connecticut Avenue
Kensington, Maryland 20795
telephone 946-4600

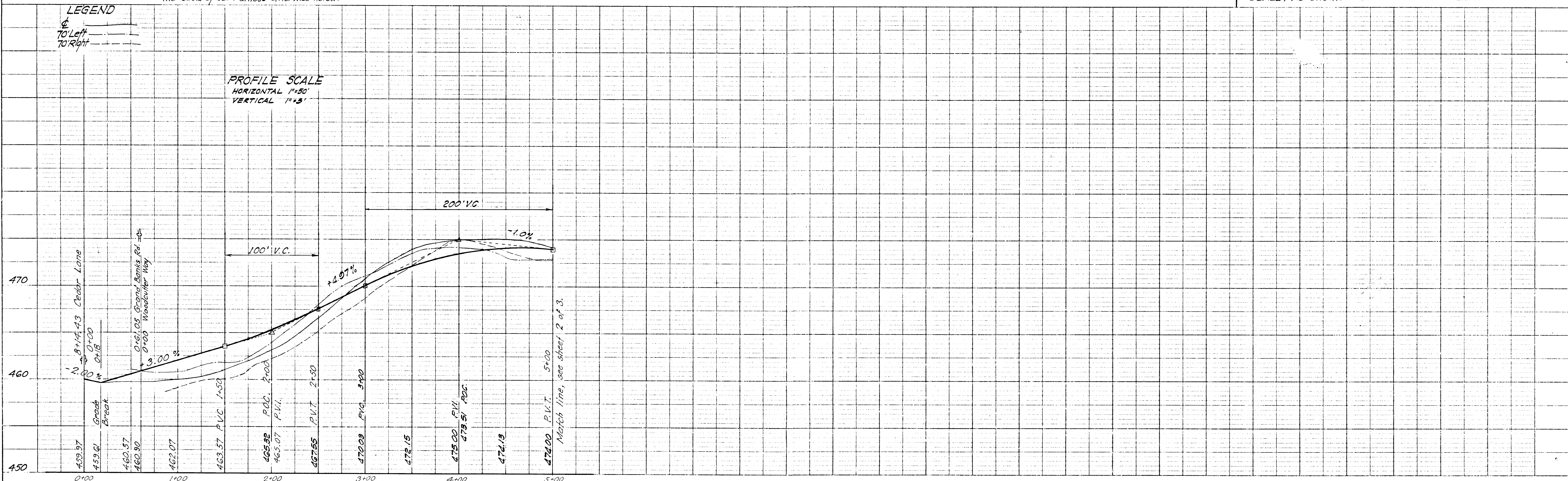
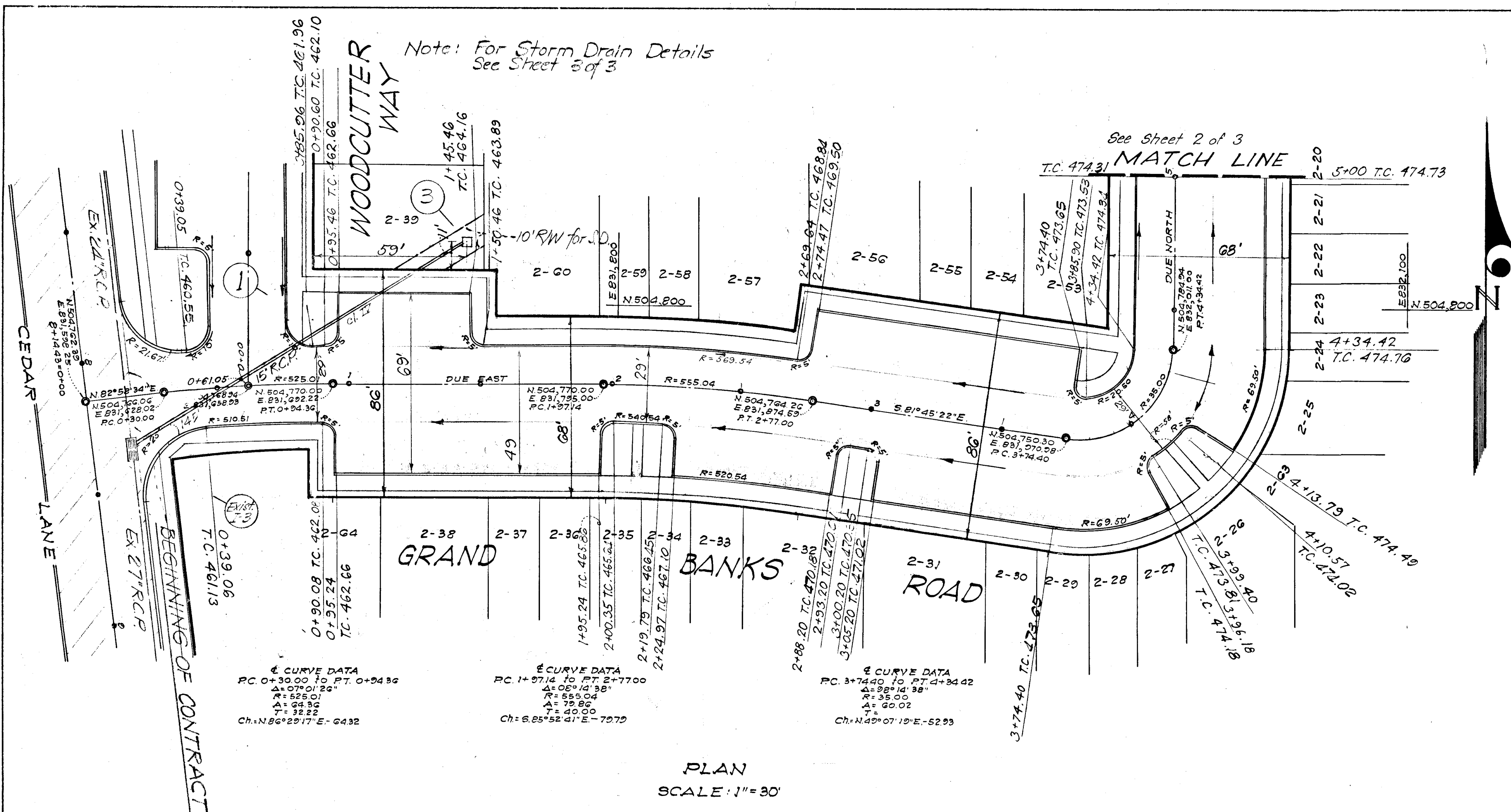
ENGINEER
BEN DYER ASSOCIATES, INC.
ENGINEERS, SURVEYORS, PLANNERS
TELEPHONE: 779-8500

DEPARTMENT of PUBLIC WORKS
Granville W. McElwain 8-25-69 DATE
CHIEF, BUREAU OF HIGHWAYS

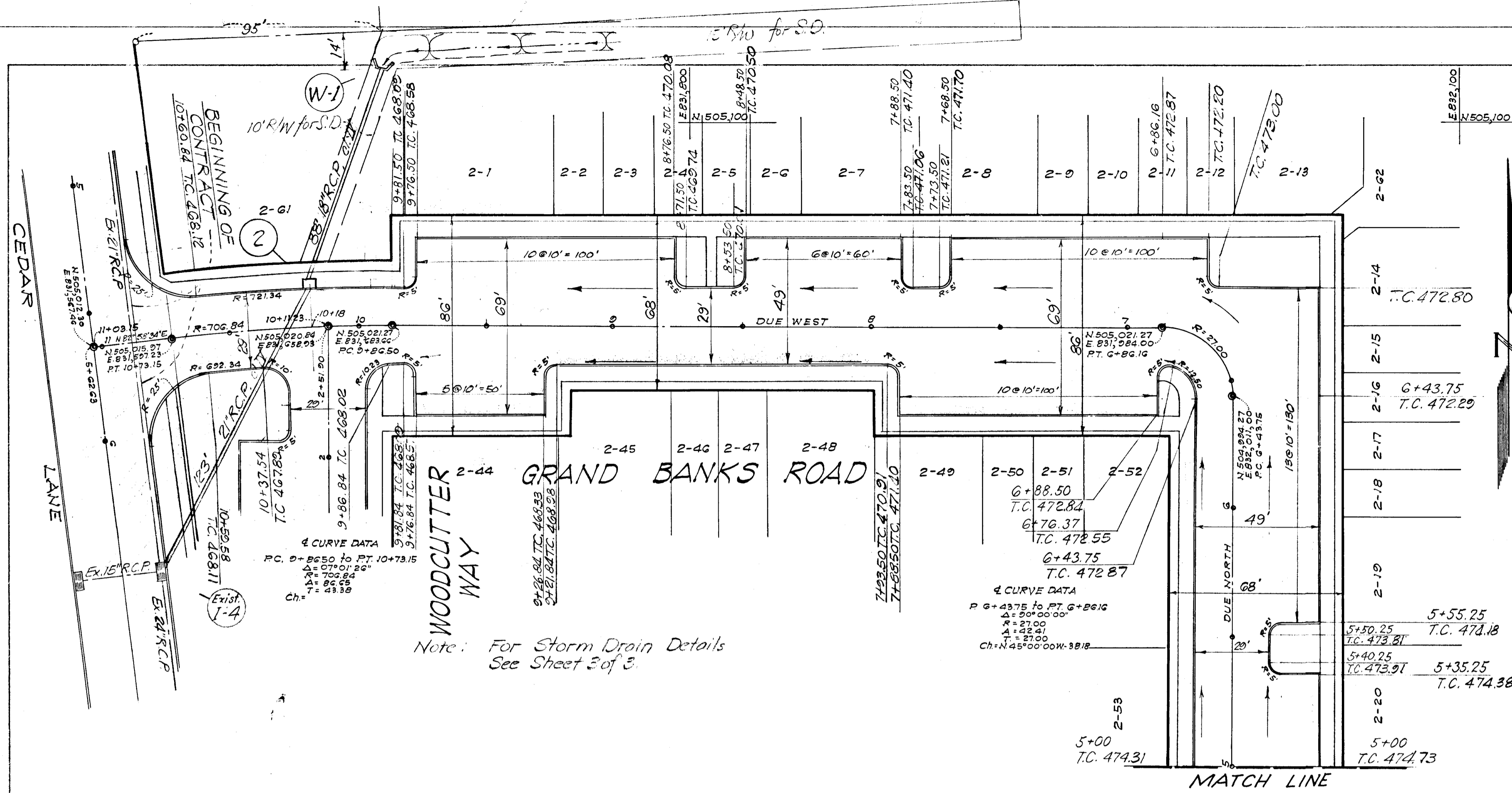
OFFICE of PLANNING and ZONING
J. H. Chauson 8-21-69 DATE
CHIEF ENGINEER, DIV. OF LAND DEVELOPMENT



PLAN & PROFILE
GRAND BANKS ROAD
VILLAGE OF HARPERS CHOICE
SECTION THREE AREA FOUR RESUB OF LOT 2
COLUMBIA
HOWARD CO, MARYLAND ELECTION DIST. #5
SCALE: AS SHOWN



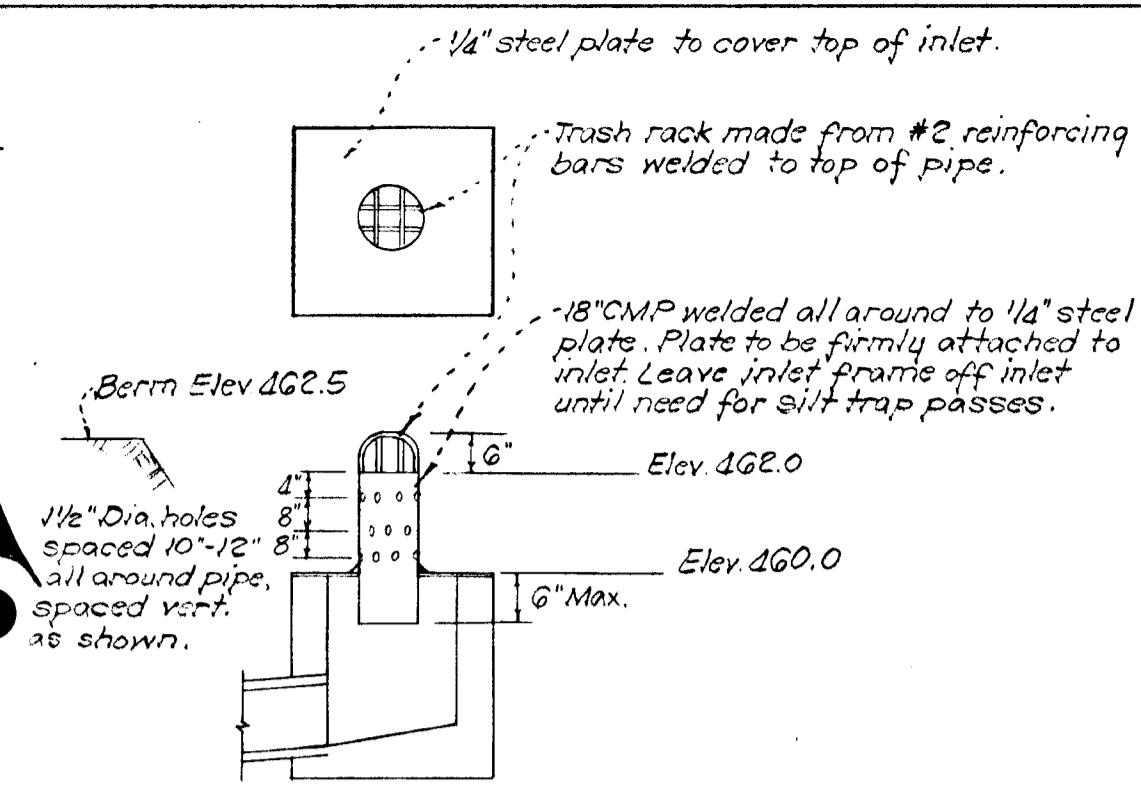
DATE _____ BY _____
 PLAN SURVEYED, PLOTTED, CHECKED, AND NOTED BY _____
 NOTE BOOK ALIGNMENT CHECKED BY _____
 NO. _____



Note: For Storm Drain Details See Sheet 3 of 3

PLAN SCALE: 1"=30'

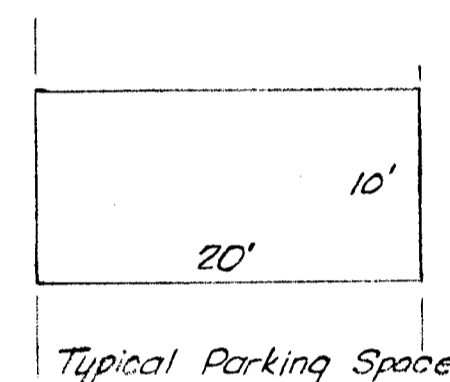
Note: All Curb Fillet Radii are measured to the back of curbs unless otherwise noted.



MODIFICATIONS TO INLET #3 FOR SILT TRAP NO SCALE

EROSION CONTROL NOTES

Model units in building #1 will be constructed first, along with street in front of bldg. #1. Inlet #3 and pipe to I-3, with modifications shown hereon, will be built with the model units in advance of general grading. Areas disturbed by this initial construction will be covered with a plain straw mulch until sod is placed.
 Areas draining toward adjacent properties will be sodded as soon as finish grading is done.
 All areas on-site will receive sod on completion of grading.



Typical Parking Space

I certify that the plan of development and the plan for control of silt and erosion meets the requirements, standards and specifications of the Howard Soil Conservation District.

David F. Murray
 David F. Murray, Reg. P.E. No. 6534
 Date 8/21/69
 I certify that all development and/or construction will be done according to this plan of development and plan of silt and sediment control.
John H. Clawson
 (Developer)
 Date 8/20/69

This development plan is approved for soil erosion and sediment control by the Howard Soil Conservation District.

Reviewed *Edmund J. Lewis* District Conservationist Date 8/21/69
 Approved *Robert V. Lawrence* Howard S.C.D. Date 8/21/69

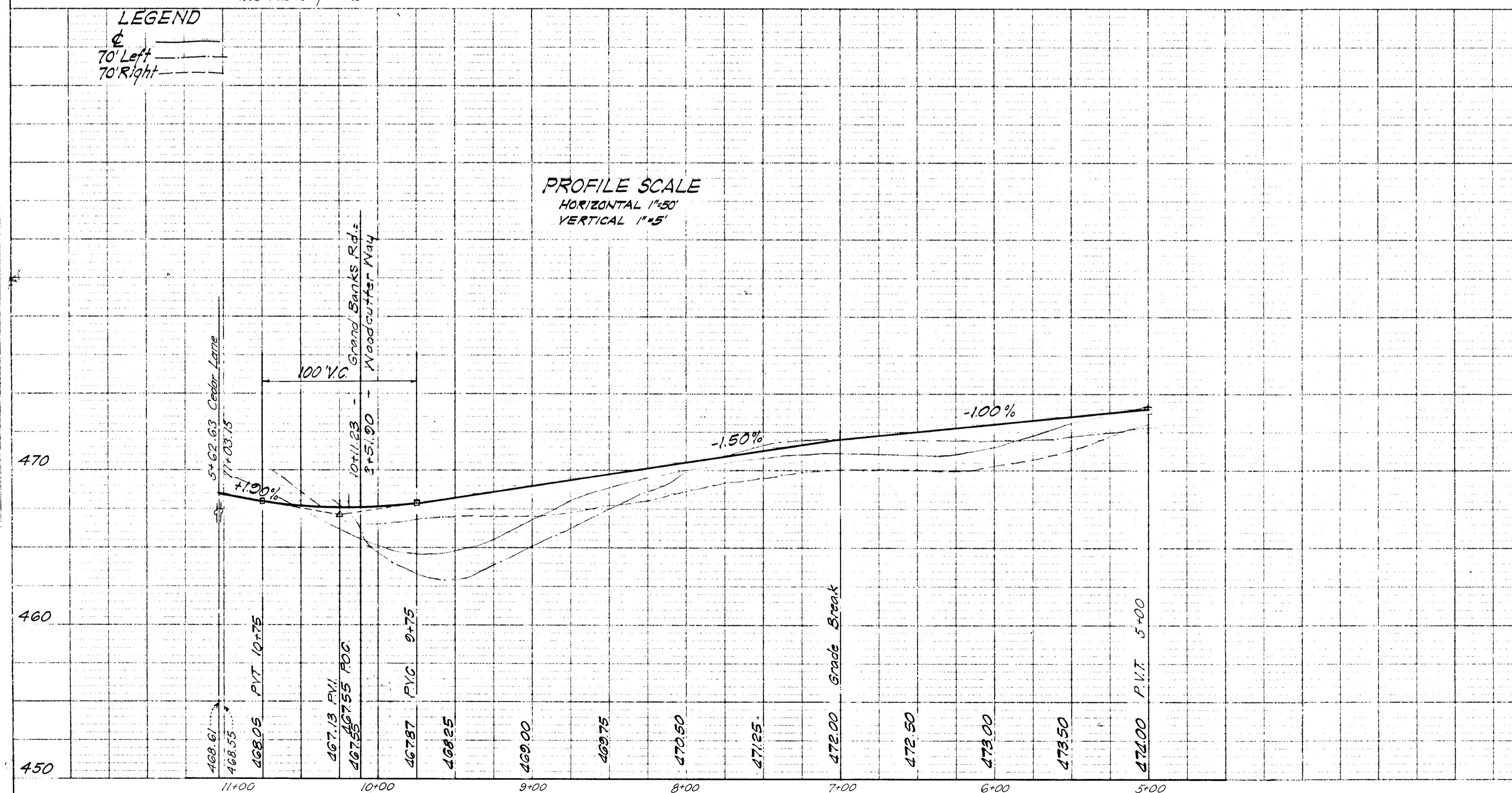
OWNER	DEVELOPER	ENGINEER
ARTERY ENTERPRISES 10400 Connecticut Avenue Kensington, Maryland 20795 Telephone 946-4600	BEN DYER ASSOCIATES, INC. ENGINEERS, SURVEYORS, PLANNERS TELEPHONE 378-8500	4705 QUEENSBURY ROAD, RIVERDALE, MARYLAND 20840 REG. P.E. NO. 6534

DEPARTMENT of PUBLIC WORKS
Granville W. McLeod 8-25-69
 CHIEF, BUREAU OF HIGHWAYS DATE

OFFICE of PLANNING and ZONING
J.H. Clawson 8-21-69
 CHIEF ENGINEER, DIV. OF LAND DEVELOPMENT DATE REG. P.E. No. 6534

PLAN & PROFILE
GRAND BANKS ROAD
 VILLAGE OF HARPERS CHOICE
 SECTION THREE AREA FOUR RESUB OF LOT 2
COLUMBIA
 HOWARD CO., MARYLAND ELECTION DIST. #5
 SCALE: AS SHOWN

DATE _____ BY _____
 PROFILE SURVEYED, PLOTTED, CHECKED, AND NOTED BY _____
 NOTE BOOK B.M. NOTED BY _____
 NO. _____



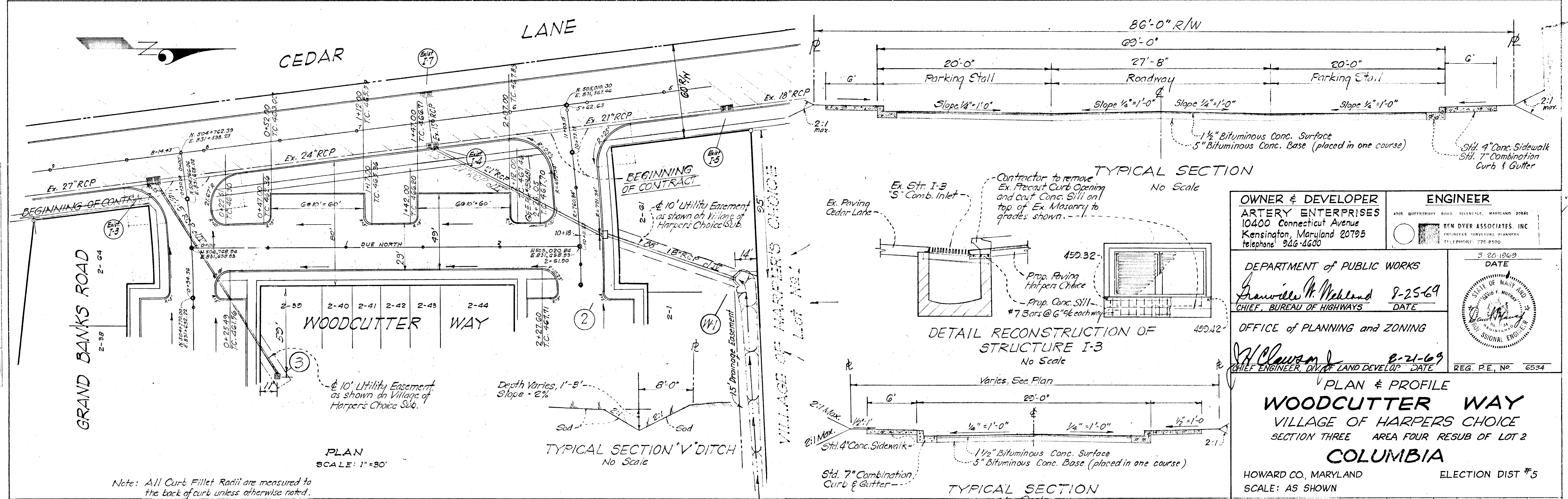
PROFILE SCALE
 HORIZONTAL 1"=50'
 VERTICAL 1"=5'

LEGEND
 70' Left
 70' Right

PLATE 1-PLAN PROFILE D. F. & R. L. STANDARD
 100% ACCEPTANCE BY THE BOARD OF ENGINEERS
 EUGENE DITZGEN, C.E.

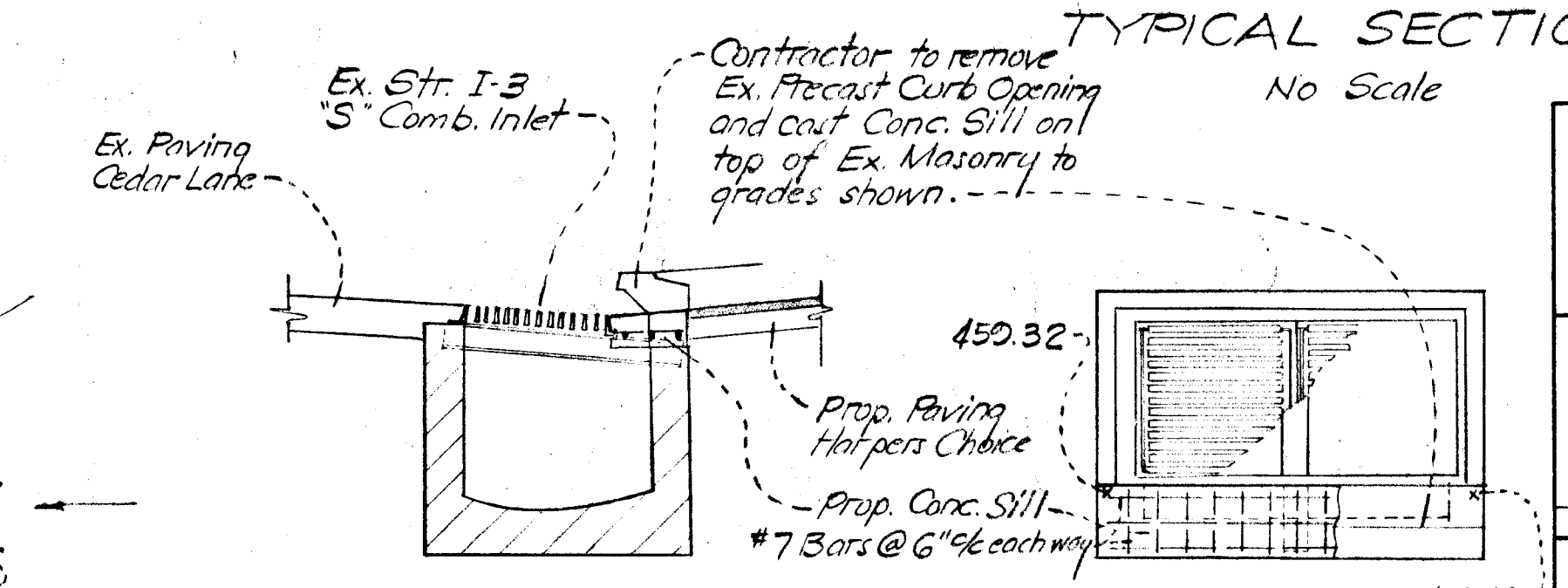
DATE
BY
SURVEYED
PLOTTED
CHECKED
NOTEBOOK
NO.

DATE
BY
SURVEYED
PLOTTED
CHECKED
NOTEBOOK
NO.

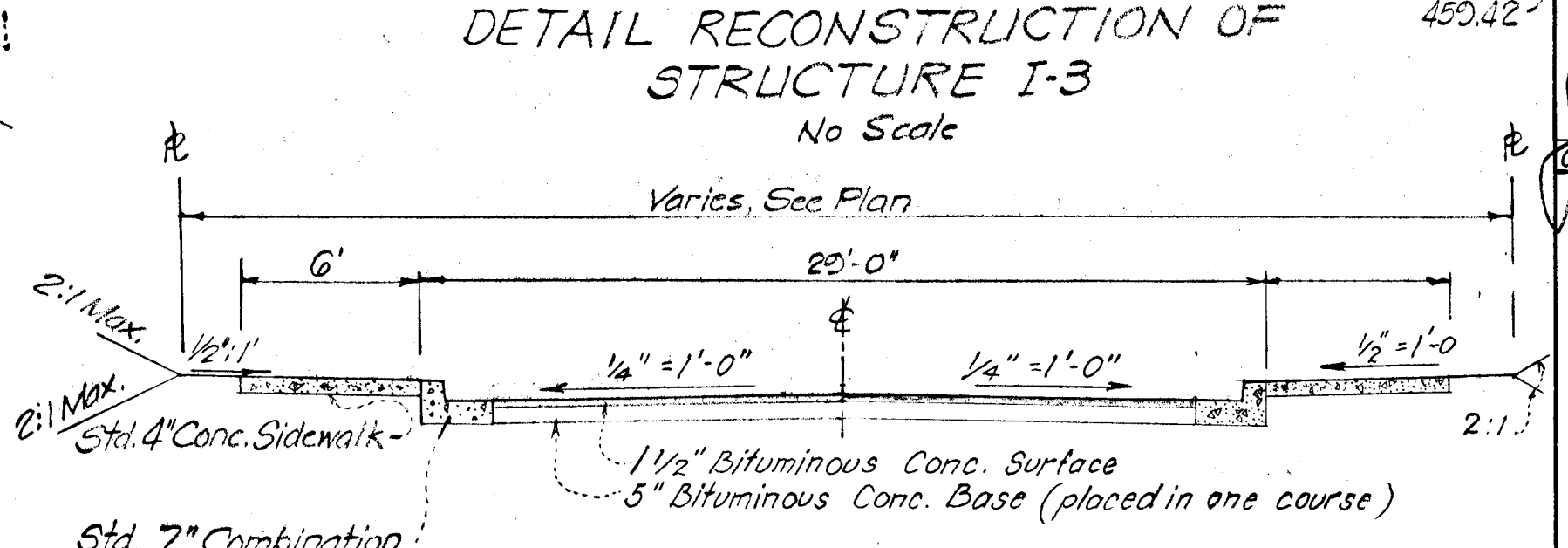


PLAN
SCALE: 1"=30'

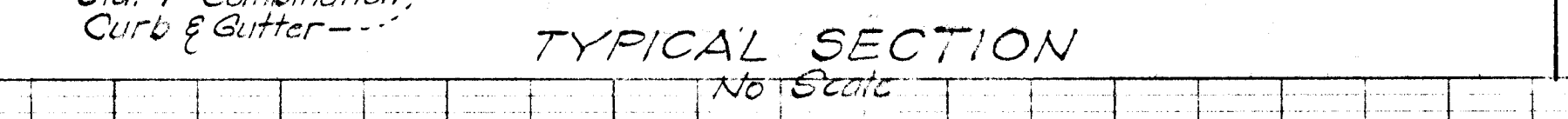
Note: All Curb Fillet Radii are measured to the back of curb unless otherwise noted.



TYPICAL SECTION
No Scale



DETAIL RECONSTRUCTION OF
STRUCTURE I-3
No Scale



TYPICAL SECTION
No Scale



TYPICAL SECTION "V" DITCH
No Scale

OWNER & DEVELOPER
ARTERY ENTERPRISES
10400 Connecticut Avenue
Kensington, Maryland 20795
telephone 246-4600

ENGINEER
BEN DYER ASSOCIATES, INC.
ENGINEERS SURVEYORS PLANNERS
TELEPHONE: 276-8500

3 28 1969
DATE

DEPARTMENT of PUBLIC WORKS
Granville H. Wickland 9-25-69
CHIEF, BUREAU OF HIGHWAYS DATE

OFFICE of PLANNING and ZONING
J. H. Clawson 8-21-69
CHIEF ENGINEER, DIV. OF LAND DEVELOP. DATE

REG. P.E. No. 6534

PLAN & PROFILE
WOODCUTTER WAY
VILLAGE OF HARPERS CHOICE
SECTION THREE AREA FOUR RESUB OF LOT 2
COLUMBIA

HOWARD CO., MARYLAND ELECTION DIST #5
SCALE: AS SHOWN

LEGEND
70' Left
70' Right

Size	Type	Length
12"	R.C.P. I	12.6'
18"	R.C.P. II	88'
21"	R.C.P. III	124'

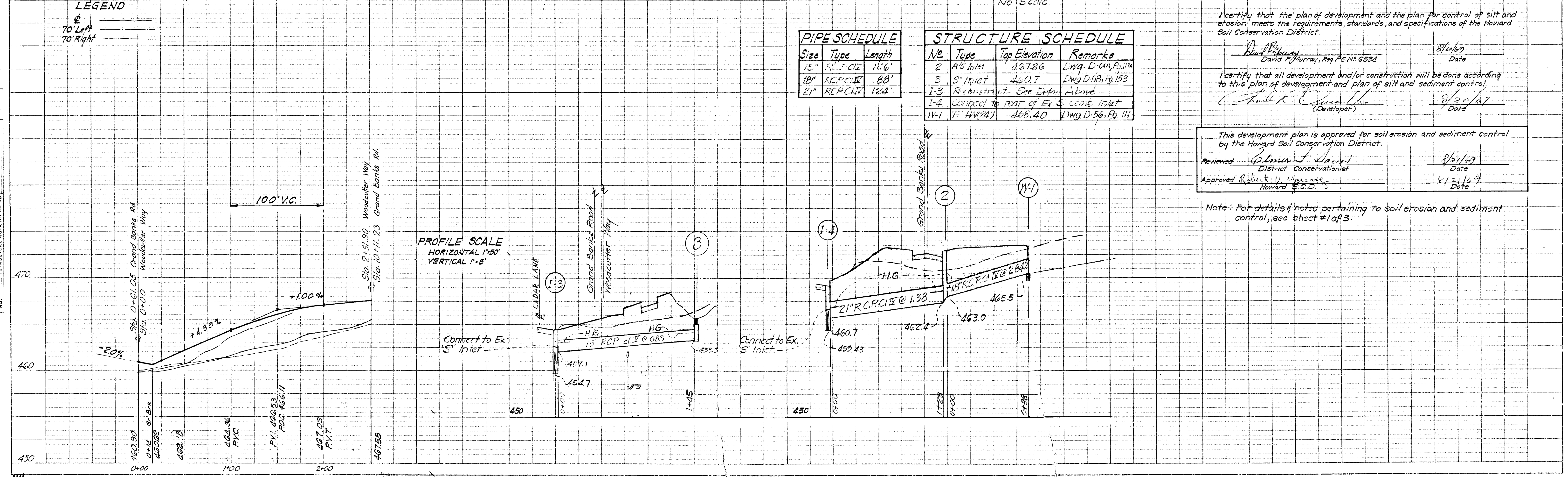
No.	Type	Top Elevation	Remarks
2	A5 Inlet	467.86	Dwg. D-64, P. 117A
3	S' Inlet	460.7	Dwg. D-98, P. 153
I-3	Reconstruct	See Detail Above	
I-4	Connect to rear of Ex. S' Comb. Inlet		
11-1	F. 44(24)	468.40	Dwg. D-56, P. 111

I certify that the plan of development and the plan for control of silt and erosion meets the requirements, standards, and specifications of the Howard Soil Conservation District.

I certify that all development and/or construction will be done according to this plan of development and plan of silt and sediment control.

This development plan is approved for soil erosion and sediment control by the Howard Soil Conservation District.

Note: For details & notes pertaining to soil erosion and sediment control, see sheet #1 of 3.



PROFILE SCALE
HORIZONTAL 1"=50'
VERTICAL 1"=5'